

Battery warning

- ❖ The battery for this car camcorder is sealed internally. DO NOT attempt to disassemble the camcorder and remove the battery.
- ❖ Always charge using the provided system. Improper charging of the battery may result in explosion.
- ❖ The battery is designed for this camcorder and is not customer replaceable.
- ❖ Batteries may explode if exposed to open fire. Never place the car camcorder in a fire.
- ❖ **Recycle the camcorder observing local regulations.**

Notes on Installation

1. Install the camcorder near the rear-view mirror to obtain the best open-field view. Do NOT install the camcorder in a location that will obstruct your required driving view.
2. Make sure that the lens is within the wiping range of the windshield wiper to ensure a clear view even when it rains.
3. Do not touch the lens with your fingers. Finger grease may be left on the lens and will result in unclear videos or snapshots. Clean the lens on a regular basis.
4. Do not install the camcorder on a tinted window. Doing so may damage the tint film.
5. Make sure that the installation position is not hindered by the tinted window.

For more operation details, please refer to CD-ROM.

1 Introduction

1.1 Package Contents

The package contains the following items. If there are any missing or damaged items, contact your dealer immediately.

Camcorder



Bracket



CD-ROM



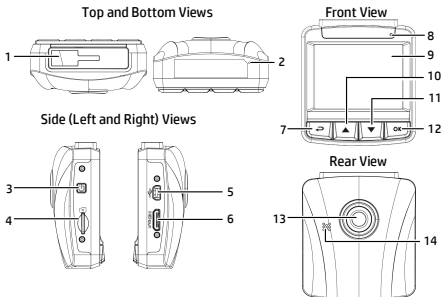
Quick start guide



Car adapter



1.2 Product Overview



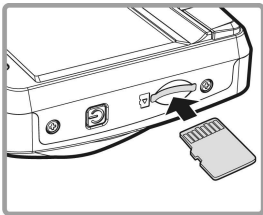
No.	Item
1	Bracket Socket
2	Microphone
3	Power Button
4	Memory Card Slot
5	USB Connector
6	HD(Mini HDMI) Connector
7	Back Button (←)

No.	Item
8	LED Indicator
9	LCD Panel
10	Up Button (▲)
11	Down Button (▼)
12	Enter Button (OK)
13	Wide Angle Lens
14	Speaker

2 Getting Started

2.1 Inserting the Memory Card

Insert the memory card with the gold contacts facing the back of the camcorder. Push the memory card until it clicks into place. (Use class 6 or above the micro SD cards for this camcorder; It is recommended to format the micro SD cards before the initial use.)



To remove the memory card

Push the edge of the memory card inward until you hear/feel it click, then allow it to push out until you can remove it from the slot.

Note:

1. Do not remove or insert the memory card when the camcorder is powered on. This may damage the memory card.
2. It is recommended to use a 32 GB, Class 6 speed or above micro SD card.
3. It is recommended to format the micro SD cards before the initial use.

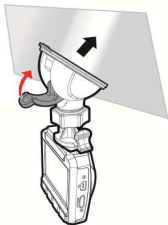
2.2 Installing in Vehicles

2.2.1 Mount to Windshield

1. Attach the bracket to the camcorder. Slide it into the bracket holder until you hear a click.



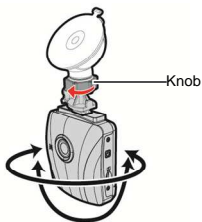
2. Before installing the bracket, please use alcohol to clean the windshield and suction cup of the bracket. Wait for dry and press suction-cup on the windshield.
3. Hold the base firmly on the windshield and press down the clamp to mount the car holder to the windshield. Make sure the base is securely locked in place.



Warning: Do not install the camcorder on a tinted window. Doing so may damage the tint film.

2.2.2 Adjust the camcorder position

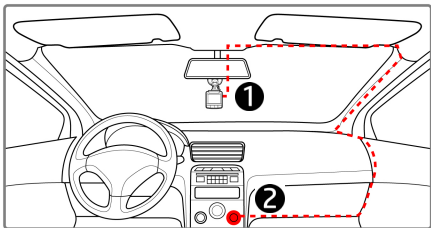
1. Loosen the knob to swivel the device vertically or horizontally.



2. Then tighten the knob to make sure the camcorder is securely locked in place.

2.3 Connecting to Power

Use only the supplied car adapter to power up the camcorder and charge the built-in battery.



1. Connect one end of the car adapter to the USB connector of the camcorder.
2. Plug the other end of the car charger to the cigarette lighter socket of your vehicle. Once the vehicle engine is started, the camcorder automatically powers on.

Note:

1. Red LED light indicates the battery is charging; when devices are connecting power cord to charge and the red light flashes, it indicates the device temperature is too high and should unplug the power cord immediately.
2. Please take note if the environment temperature reaches 45°C or above, the car adapter still can supply power to camcorder, but it may not charge the battery. This is characteristic of Lithium polymer battery and is not a malfunction.

2.4 Powering the Camcorder On / Off

2.4.1 Auto Power On/Off

Once the vehicle engine is started, the device automatically turns on. If the Automatic Record function is enabled, the recording will automatically start right away after the device turns on.

Once the vehicle engine is shut down, the camcorder automatically saves the recording and turns off the power within 10 seconds.

Note:

Automatic power up and shut down assumes the power socket is linked to the car ignition.

3 Using the Camcorder

3.1 Recording Videos

3.1.1 Record videos while driving

When the vehicle engine starts up, the camcorder automatically turns on and starts recording.

Recording will automatically stop when the engine is switched off.

3.1.2 Emergency Recording

During normal video recording, press the **OK** button to begin emergency recording mode.

The “**Emergency**” message will be displayed immediately on the upper left corner of the screen, and the recorded file will be continuous and protected from being overwritten.

After complete the emergency recording, it will be back to normal recording mode.



Note:

1. If the *Collision Detection* function is enabled and a collision is detected, the camcorder will automatically trigger the emergency recording feature.
2. The emergency recording file is created as a new file, which will be protected to avoid being overwritten by normal loop recording. 8 GB (or above) memory card can save up to 10 emergency video files. The alert message of “*Emergency files are full*” will pop up on the screen when the emergency recording files are full, and the oldest emergency file will be automatically deleted when a new emergency recording file is created.

3.2 Playback Videos and Photos

1. During recording, press ▲ button to browse for the desired video and photo file.
2. Press the ▲/▼ button to select the file that you want to browse and press the OK button.
3. Press the ▲/▼ button to view the next or the previous file and press the OK button to view the file in full screen.
4. When user want to playback the emergency video file, they could check on file name as EMER.

3.2.1 Deleting Files

To delete file(s), do the following:

1. If recording is in progress, press the ↶ button to enter the OSD menu.
2. Press the ▲/▼ button to select **File Deletion** and press the OK button.
3. Press the ▲/▼ button to select Delete One or Delete All, then press the OK button.
4. After select Delete One, press the ▲/▼ button to select that you want to delete, then press the OK button.
5. After select Delete All, press the ▲/▼ button to select Video File or Image File that you want to delete, then select YES or NO to delete.

Note:

1. Deleted files CANNOT be recovered. Ensure the files have backup before deletion.
2. Emergency files cannot be deleted from this operation. They can be deleted by inserting memory card into your PC or format memory card.