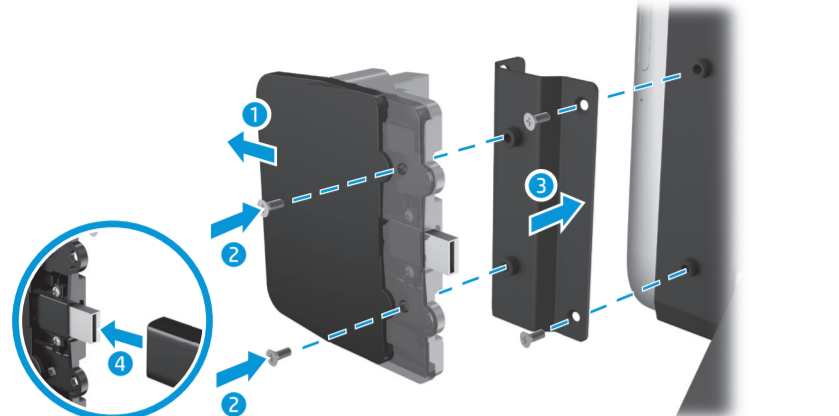


Quick Setup

1 Set up the tablet. Refer to the Quick Start guide that shipped with the tablet.

2 (optional) Connect the HP fingerprint reader or HP MSR to the bracket **1** and **2**. Then connect to the right or left side of the stand, using the included screws **3**. Connect a USB cable to the component **4**, run the cable through the opening in the stand and through the cable clip and then connect the other end to the adapter. See **1** and **2** in step 3 below.

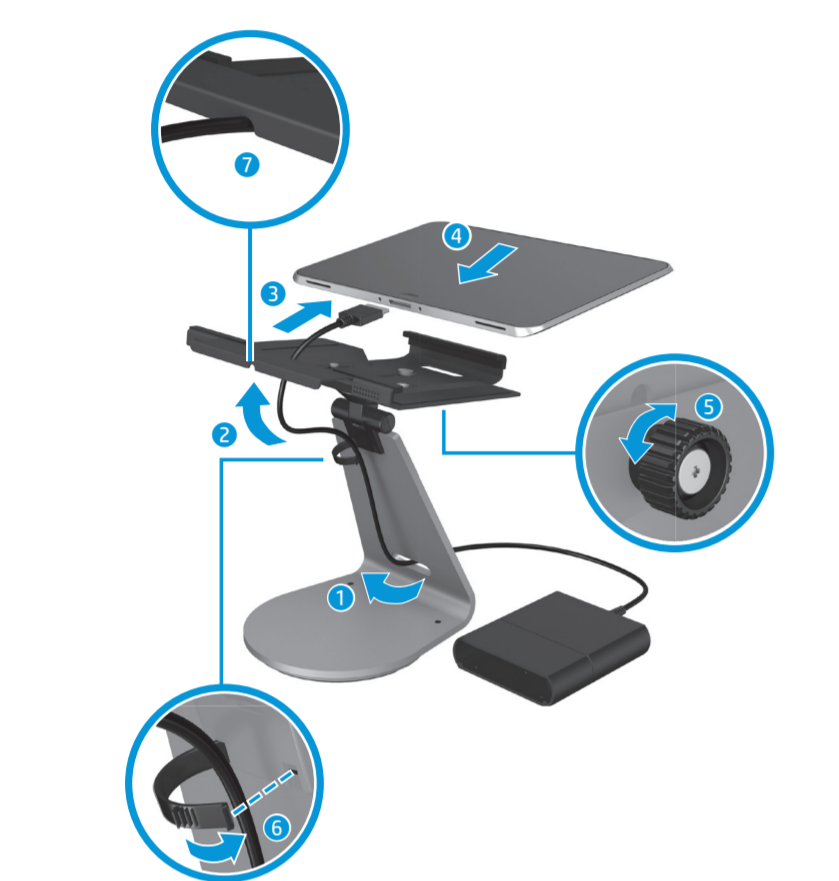


3 Connect the tablet to the stand and to the HP ElitePad Connectivity and Smart AC Adapter, as follows. Route the adapter cable through the opening in the stand **1** and through the cable clip **2**.

NOTE: To open the cable clip, gently squeeze it to unhinge the right side.

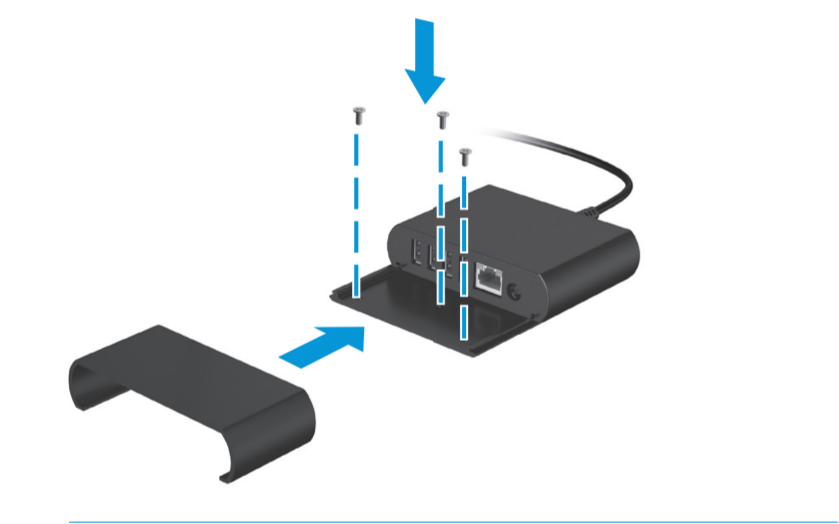
Connect the adapter cable to the port on the bottom of the tablet **1**.

Insert the tablet into the stand **2**, and tighten the thumb screw to secure the tablet in the stand **3**.



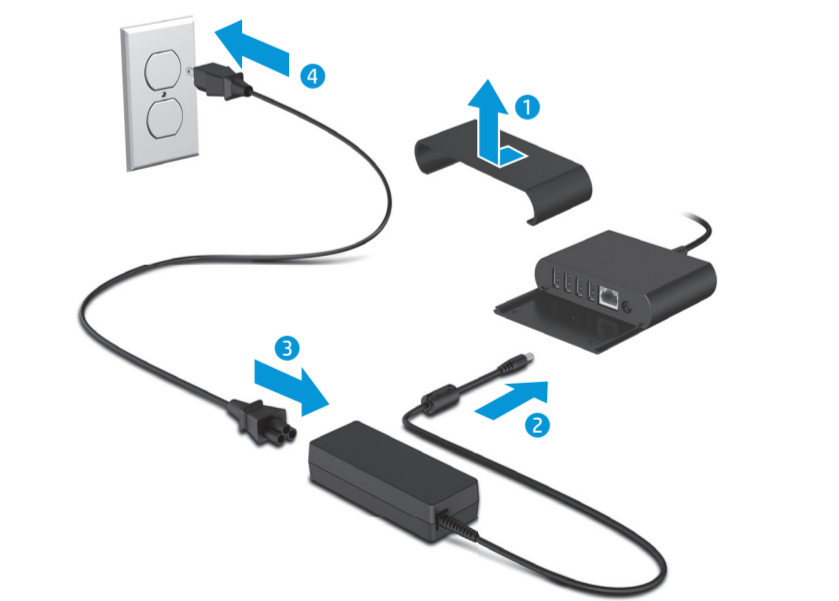
4 Secure the cables. Close the cable clip **1** and press the cable into the relief notch on the bottom of the stand **2**.

5 (optional) Mount the AC adapter to a countertop.



NOTE: Screws are not included.

6 Connect the power supply to the adapter.



7 Connect network cable and USB devices. Replace port cover and turn on tablet

8 Connect the tablet to the stand and to the HP ElitePad Connectivity and Smart AC Adapter, as follows. Route the adapter cable through the opening in the stand **1** and through the cable clip **2**.

Important Product Information

HP support

HP recommends that you update your software drivers to the most recent version.

To access the latest drivers and user guides, or to contact support, go to <http://www.hp.com/support>, select your country, and then follow the on-screen instructions.

Locate product information

The serial number, product number, and model number are located on the bottom edge or back of the tablet. You may need this information when you contact support.

Limited warranty

You can find the expressly provided HP Limited Warranty applicable to your product in the tablet box.

Snel aan de slag

1 Installeer de tablet. Raadpleeg de gids Snel aan de slag die bij de tablet geleverd is.

2 (optioneel) Sluit de vingerafdrukker of MSR van HP aan op de houder **1** en **2**. Sluit hem daarna aan op de linker- of rechterkant van de standaard, met de meegeleverde schroeven **3**. Sluit een USB-kabel aan op het component **4**, voer de kabel door de opening in de standaard en door de kabelclip en sluit daarna het andere uiteinde van de kabel aan op de adapter. Raadpleeg **1** en **2** in stap 3 hieronder.

3 Sluit de tablet als volgt aan op de standaard en op de HP ElitePad Connectivity en Smart-netvoedingsadapter. Voer de adapterkabel door de opening in de standaard **1** en door de kabelclip **2**.

OPMERKING: Om de kabelclip te openen, moet u er voorzichtig op knippen om de rechterkant los te koppelen.

Sluit de adapterkabel aan op de poort aan de onderkant van de tablet **1**.

Plaats de tablet in de standaard **2** en draai de duimschroef vast om de tablet stevig in de standaard te bevestigen **3**.

4 Beveilig de kabels. Sluit de kabelclip **1** en druk de kabel in de inkeping op de onderkant van de standaard **2**.

5 (optioneel) Bevestig de voedingsadapter aan een tafelblad.

OPMERKING: Schroeven zijn niet inbegrepen.

6 Sluit de voedingsbron aan op de adapter.

7 Sluit de netwerkkabel en USB-apparaten aan. Plaats de poortbescherming terug en schakel de tablet in.

8 Connect the tablet to the stand and to the HP ElitePad Connectivity and Smart AC Adapter, as follows. Route the adapter cable through the opening in the stand **1** and through the cable clip **2**.

NOTE: To open the cable clip, gently squeeze it to unhinge the right side.

Connect the adapter cable to the port on the bottom of the tablet **1**.

Insert the tablet into the stand **2**, and tighten the thumb screw to secure the tablet in the stand **3**.

4 Secure the cables. Close the cable clip **1** and press the cable into the relief notch on the bottom of the stand **2**.

5 (optional) Mount the AC adapter to a countertop.

6 Connect the power supply to the adapter.

7 Connect network cable and USB devices. Replace port cover and turn on tablet

8 Connect the tablet to the stand and to the HP ElitePad Connectivity and Smart AC Adapter, as follows. Route the adapter cable through the opening in the stand **1** and through the cable clip **2**.

Installeringsoversikt

1 Oppsett av nettbrettet. Se Hurtigstartveiledningen som følger med nettbrettet.

2 (Valgfritt) Koble HP-fingeravtrykksleseren eller HP MSR til brakettene **1** og **2**. Koble deretter til høyre eller venstre side av foten, ved å benytte skruene som følger med **3**. Koble en USB-kabel til komponenten **4**, før kabelen gjennom åpningen i foten og gjennom ledningsfestet, og koble den andre enden til adapteren. Se **1** og **2** i trinn 3 nedenfor.

3 Koble nettbrettet til foten, HP ElitePad Connectivity og Smart AC Adapter, som følger. Før adapterledningen gjennom åpningen i foten **1** og gjennom ledningsfestet **2**.

MERK: Klem forsiktig på høyre side av ledningsfestet slik at det løsnes, for å åpne det.

Koble adapterkabelen til porten nederst på skjermen **1**.

Sett nettbrettet i foten **2**, og stram fingerkneppen for å feste nettbrettet godt til foten **3**.

4 Fest ledningene. Lukk ledningsfestet **1**, og trykk ledningen inn i sporet for strekkavlastning nederst på foten **2**.

5 (Valgfritt) Feste adapteren til en bordplate.

MERK: Skrueer følger ikke med.

6 Koble strømforsyningen til adapteren.

7 Koble til netverkskabelen og USB-enheter. Sett portdekslet tilbake på plass og slå på nettbrettet.

8 Connect the tablet to the stand and to the HP ElitePad Connectivity and Smart AC Adapter, as follows. Route the adapter cable through the opening in the stand **1** and through the cable clip **2**.

NOTE: To open the cable clip, gently squeeze it to unhinge the right side.

Connect the adapter cable to the port on the bottom of the tablet **1**.

Insert the tablet into the stand **2**, and tighten the thumb screw to secure the tablet in the stand **3**.

4 Secure the cables. Close the cable clip **1** and press the cable into the relief notch on the bottom of the stand **2**.

5 (optional) Mount the AC adapter to a countertop.

6 Connect the power supply to the adapter.

7 Connect network cable and USB devices. Replace port cover and turn on tablet

Instalacja

1 Skonfiguruj tablet. Więcej informacji na ten temat można znaleźć w przewodniku Szybki start dostarczonym wraz z tabletem.

2 (opcjonalnie) Podłącz czytnik linii papilarynych HP lub router HP MSR do wspornika **1** i **2**. Następnie podłącz czytnik lub router z lewej lub prawej strony stojaka, korzystając z dołączonych śrub **3**. Podłącz kabel USB do elementu **4**, przeprowadź kabel przez otwór w stojaku i przez zacisk kablowy, a następnie podłącz drugą końcówkę adaptera. patrz punkty **1** i **2** w kroku 3 poniżej.

3 Podłącz tablet do stojaka oraz do adaptera HP ElitePad Connectivity i zasilacza Smart AC, zgodnie z ilustracją. Przeprowadź kabel adaptera przez otwór w stojaku **1** i przez zacisk kablowy **2**.

UWAGA: Aby otworzyć zacisk kablowy, ściśnij go delikatnie w celu odblokowania go z prawej strony.

Podłącz kabel adaptera do portu u dołu tabletu **1**.

Włóż tablet do stojaka **2** i dokręć śrubę motylkową, aby zabezpieczyć tablet w stojaku **3**.

4 Zabezpiecz kable. Zamknij zacisk kablowy **1** i wcisnij kabel do wyzobionego wcięcia u dołu stojaka **2**.

5 (opcjonalnie) Zamontuj zasilacz do zestawu nie dołączonego śrub.

UWAGA: Do zestawu nie dołączono śrub.

6 Podłącz zasilacz do adaptera.

7 Podłącz kabel sieciowy oraz urządzenia USB. Umieść pokrywę portu z powrotem na swoim miejscu i włącz tablet.

8 Connect the tablet to the stand and to the HP ElitePad Connectivity and Smart AC Adapter, as follows. Route the adapter cable through the opening in the stand **1** and through the cable clip **2**.

NOTE: To open the cable clip, gently squeeze it to unhinge the right side.

Connect the adapter cable to the port on the bottom of the tablet **1**.

Insert the tablet into the stand **2**, and tighten the thumb screw to secure the tablet in the stand **3**.

4 Secure the cables. Close the cable clip **1** and press the cable into the relief notch on the bottom of the stand **2**.

5 (optional) Mount the AC adapter to a countertop.

6 Connect the power supply to the adapter.

7 Connect network cable and USB devices. Replace port cover and turn on tablet

8 Connect the tablet to the stand and to the HP ElitePad Connectivity and Smart AC Adapter, as follows. Route the adapter cable through the opening in the stand **1** and through the cable clip **2**.

NOTE: To open the cable clip, gently squeeze it to unhinge the right side.

Connect the adapter cable to the port on the bottom of the tablet **1**.

2 (opcjonalnie) Ligue o leitor de impressões digitais HP ou o MSR HP ao suporte **1** e **2**. Em seguida, ligue ao lado direito ou esquerdo da base utilizando os parafusos incluídos **3**. Ligue um cabo USB ao componente **4**, passe o cabo através da abertura na base e do clipe do cabo e, em seguida, ligue a outra extremidade ao adaptador. Consulte **1** e **2** no passo 3 abaixo.

3 Ligue o tablet à base e ao adaptador HP ElitePad Connectivity e ao transformador CA smart. Passe o cabo do adaptador através do orifício da base **1** e do clipe do cabo **2**.

NOTA: Para abrir o clipe do cabo, aperte-o ligeiramente para abrir do lado direito.

Ligue o cabo do adaptador à porta na parte inferior do tablet **1**.

Insira o tablet na base **2** e aperte o parafuso de aperto para fixar o tablet na base **3**.

4 Fixe os cabos. Feche o clipe do cabo **1** e encaixe o cabo no entalhe de desengate na parte inferior da base **2**.

5 (opcional) Monte o transformador no topo de uma bancada.

NOTA: Parafusos não incluídos.

6 Ligue a fonte de alimentação ao adaptador.

7 Ligue o cabo de rede e os dispositivos USB. Volte a colocar a tampa da porta e ligue o tablet.

8 Connect the tablet to the stand and to the HP ElitePad Connectivity and Smart AC Adapter, as follows. Route the adapter cable through the opening in the stand **1** and through the cable clip **2**.

NOTE: To open the cable clip, gently squeeze it to unhinge the right side.

Connect the adapter cable to the port on the bottom of the tablet **1**.

Insert the tablet into the stand **2**, and tighten the thumb screw to secure the tablet in the stand **3**.

4 Secure the cables. Close the cable clip **1** and press the cable into the relief notch on the bottom of the stand **2**.

5 (optional) Mount the AC adapter to a countertop.

6 Connect the power supply to the adapter.

7 Connect network cable and USB devices. Replace port cover and turn on tablet

8 Connect the tablet to the stand and to the HP ElitePad Connectivity and Smart AC Adapter, as follows. Route the adapter cable through the opening in the stand **1** and through the cable clip **2**.

NOTE: To open the cable clip, gently squeeze it to unhinge the right side.

Connect the adapter cable to the port on the bottom of the tablet **1**.

Insert the tablet into the stand **2**, and tighten the thumb screw to secure the tablet in the stand **3**.

4 Secure the cables. Close the cable clip **1** and press the cable into the relief notch on the bottom of the stand **2**.

5 (optional) Mount the AC adapter to a countertop.

6 Connect the power supply to the adapter.

7 Connect network cable and USB devices. Replace port cover and turn on tablet

8 Connect the tablet to the stand and to the HP ElitePad Connectivity and Smart AC Adapter, as follows. Route the adapter cable through the opening in the stand **1** and through the cable clip **2**.

NOTE: To open the cable clip, gently squeeze it to unhinge the right side.

Connect the adapter cable to the port on the bottom of the tablet **1**.

Insert the tablet into the stand **2**, and tighten the thumb screw to secure the tablet in the stand **3**.

4 Secure the cables. Close the cable clip **1** and press the cable into the relief notch on the bottom of the stand **2**.

5 (optional) Mount the AC adapter to a countertop.

6 Connect the power supply to the adapter.

7 Connect network cable and USB devices. Replace port cover and turn on tablet

8 Connect the tablet to the stand and to the HP ElitePad Connectivity and Smart AC Adapter, as follows. Route the adapter cable through the opening in the stand **1** and through the cable clip **2**.

NOTE: To open the cable clip, gently squeeze it to unhinge the right side.

Connect the adapter cable to the port on the bottom of the tablet **1**.

Insert the tablet into the stand **2**, and tighten the thumb screw to secure the tablet in the stand **3**.

4 Secure the cables. Close the cable clip **1** and press the cable into the relief notch on the bottom of the stand **2**.

5 (optional) Mount the AC adapter to a countertop.

6 Connect the power supply to the adapter.

7 Connect network cable and USB devices. Replace port cover and turn on tablet

8 Connect the tablet to the stand and to the HP ElitePad Connectivity and Smart AC Adapter, as follows. Route the adapter cable through the opening in the stand **1** and through the cable clip **2**.

NOTE: To open the cable clip, gently squeeze it to unhinge the right side.

Connect the adapter cable to the port on the bottom of the tablet **1**.

Insert the tablet into the stand **2**, and tighten the thumb screw to secure the tablet in the stand **3**.

4 Secure the cables. Close the cable clip **1** and press the cable into the relief notch on the bottom of the stand **2**.

5 (optional) Mount the AC adapter to a countertop.

6 Connect the power supply to the adapter.

7 Connect network cable and USB devices. Replace port cover and turn on tablet

8 Connect the tablet to the stand and to the HP ElitePad Connectivity and Smart AC Adapter, as follows. Route the adapter cable through the opening in the stand **1** and through the cable clip **2**.

NOTE: To open the cable clip, gently squeeze it to unhinge the right side.

Connect the adapter cable to the port on the bottom of the tablet **1**.

Insert the tablet into the stand **2**, and tighten the thumb screw to secure the tablet in the stand **3**.

4 Secure the cables. Close the cable clip **1** and press the cable into the relief notch on the bottom of the stand **2**.

5 (optional) Mount the AC adapter to a countertop.

6 Connect the power supply to the adapter.

7 Connect network cable and USB devices. Replace port cover and turn on tablet

8 Connect the tablet to the stand and to the HP ElitePad Connectivity and Smart AC Adapter, as follows. Route the adapter cable through the opening in the stand **1** and through the cable clip **2**.

NOTE: To open the cable clip, gently squeeze it to unhinge the right side.

Connect the adapter cable to the port on the bottom of the tablet **1**.

Insert the tablet into the stand **2**, and tighten the thumb screw to secure the tablet in the stand **3**.

4 Secure the cables. Close the cable clip **1** and press the cable into the relief notch on the bottom of the stand **2**.

5 (optional) Mount the AC adapter to a countertop.

6 Connect the power supply to the adapter.

7 Connect network cable and USB devices. Replace port cover and turn on tablet

8 Connect the tablet to the stand and to the HP ElitePad Connectivity and Smart AC Adapter, as follows. Route the adapter cable through the opening in the stand **1** and through the cable clip **2**.

NOTE: To open the cable clip, gently squeeze it to unhinge the right side.

Connect the adapter cable to the port on the bottom of the tablet **1**.

Insert the tablet into the stand **2**, and tighten the thumb screw to secure the tablet in the stand **3**.

4 Secure the cables. Close the cable clip **1** and press the cable into the relief notch on the bottom of the stand **2**.

5 (optional) Mount the AC adapter to a countertop.

6 Connect the power supply to the adapter.

7 Connect network cable and USB devices. Replace port cover and turn on tablet

8 Connect the tablet to the stand and to the HP ElitePad Connectivity and Smart AC Adapter, as follows. Route the adapter cable through the opening in the stand **1** and through the cable clip **2**.

NOTE: To open the cable clip, gently squeeze it to unhinge the right side.

Connect the adapter cable to the port on the bottom of the tablet **1**.

Insert the tablet into the stand **2**, and tighten the thumb screw to secure the tablet in the stand **3**.

4 Secure the cables. Close the cable clip **1** and press the cable into the relief notch on the bottom of the stand **2**.

5 (optional) Mount the AC adapter to a countertop.

6 Connect the power supply to the adapter.

7 Connect network cable and USB devices. Replace port cover and turn on tablet

8 Connect the tablet to the stand and to the HP ElitePad Connectivity and Smart AC Adapter, as follows. Route the adapter cable through the opening in the stand **1** and through the cable clip **2**.

NOTE: To open the cable clip, gently squeeze it to unhinge the right side.

Connect the adapter cable to the port on the bottom of the tablet **1**.

Insert the tablet into the stand **2**, and tighten the thumb screw to secure the tablet in the stand **3**.

4 Secure the cables. Close the cable clip **1** and press the cable into the relief notch on the bottom of the stand **2**.

5 (optional) Mount the AC adapter to a countertop.

6 Connect the power supply to the adapter.

7 Connect network cable and USB devices. Replace port cover and turn on tablet

8 Connect the tablet to the stand and to the HP ElitePad Connectivity and Smart AC Adapter, as follows. Route the adapter cable through the opening in the stand **1** and through the cable clip **2**.

NOTE: To open the cable clip, gently squeeze it to unhinge the right side.

Connect the adapter cable to the port on the bottom of the tablet **1**.

Insert the tablet into the stand **2**, and tighten the thumb screw to secure the tablet in the stand **3**.

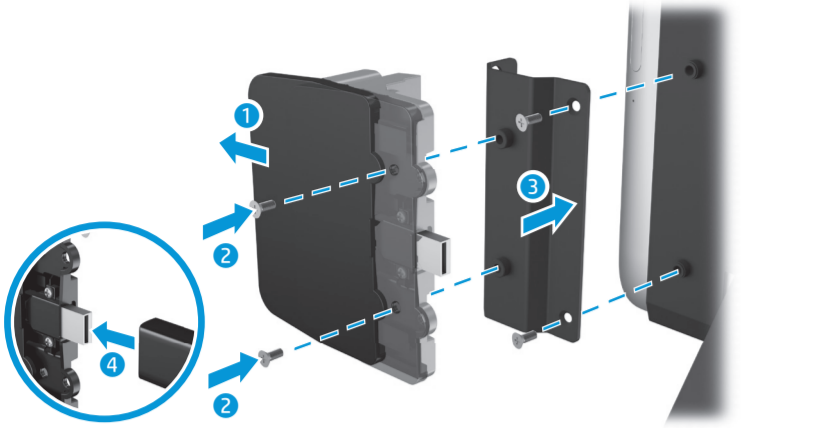
4 Secure the cables. Close the cable clip **1** and press the cable into the relief notch on the bottom of the stand **2**.

5 (optional) Mount the AC adapter to a countertop.

Quick Setup

1 Set up the tablet. Refer to the Quick Start guide that shipped with the tablet.

2 (optional) Connect the HP fingerprint reader or HP MSR to the bracket ❶ and ❷. Then connect to the right or left side of the stand, using the included screws ❸. Connect a USB cable to the component ❹, run the cable through the opening in the stand and through the cable clip and then connect the other end to the adapter. See ❶ and ❷ in step 3 below.

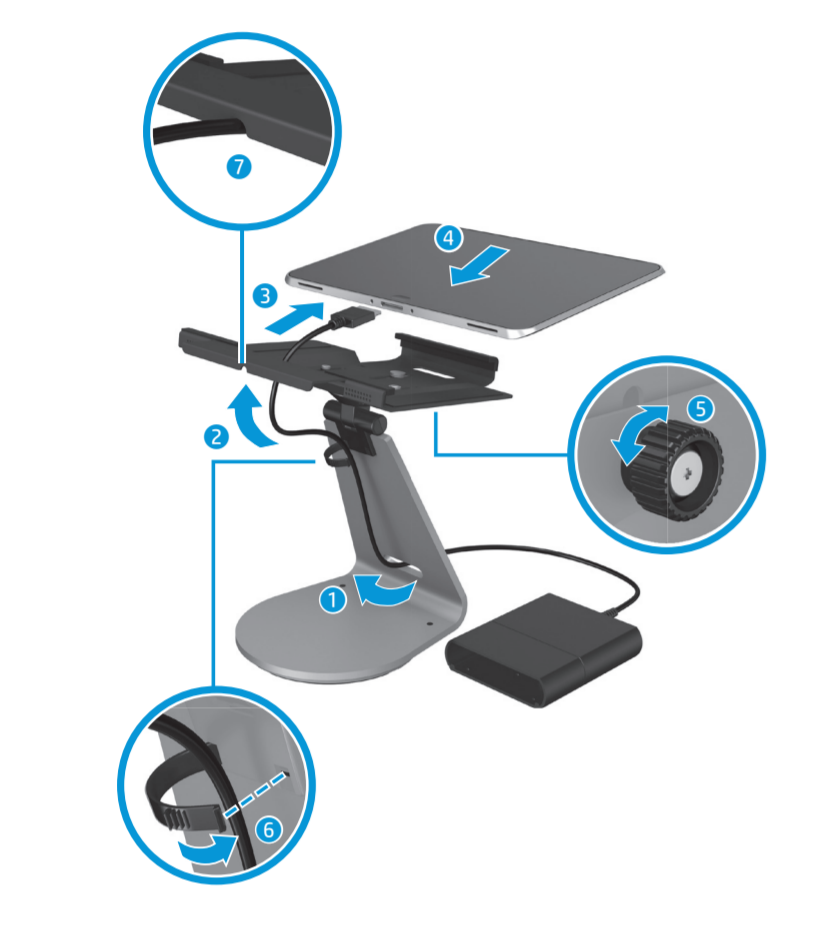


3 Connect the tablet to the stand and to the HP ElitePad Connectivity and Smart AC Adapter, as follows. Route the adapter cable through the opening in the stand ❶ and through the cable clip ❷.

NOTE: To open the cable clip, gently squeeze it to unhinge the right side.

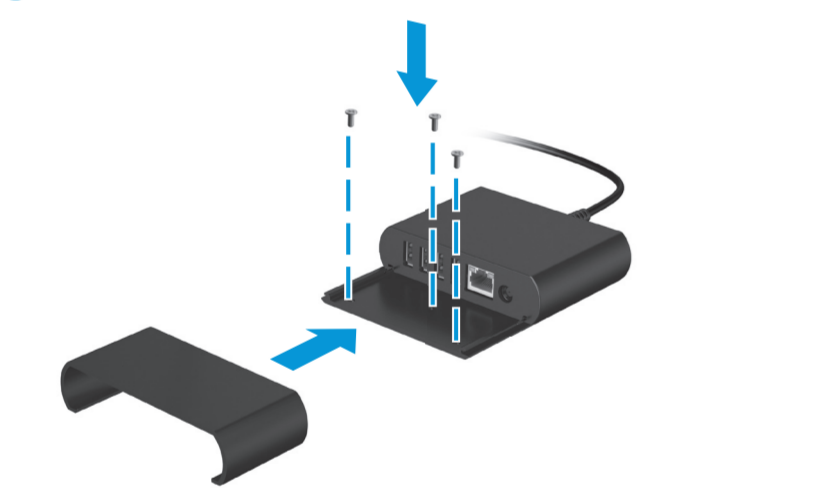
Connect the adapter cable to the port on the bottom of the tablet ❸.

Insert the tablet into the stand ❹, and tighten the thumb screw to secure the tablet in the stand ❺.

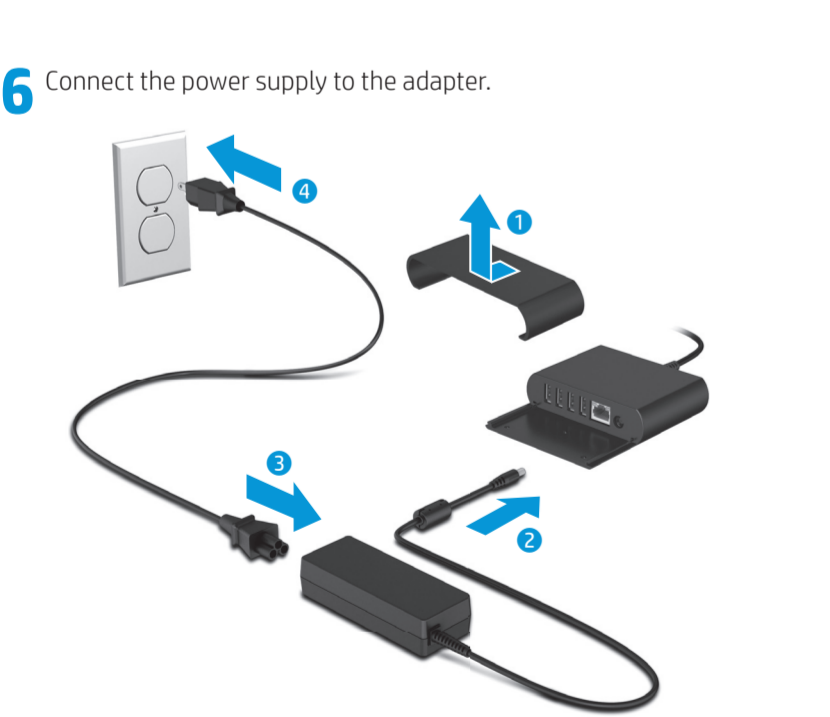


4 Secure the cables. Close the cable clip ❶ and press the cable into the relief notch on the bottom of the stand ❷.

5 (optional) Mount the AC adapter to a countertop.



6 Connect the power supply to the adapter.



7 Connect network cable and USB devices. Replace port cover and turn on tablet

Important Product Information

HP support

HP recommends that you update your software drivers to the most recent version.

To access the latest drivers and user guides, or to contact support, go to <http://www.hp.com/support>, select your country, and then follow the on-screen instructions.

Locate product information

The serial number, product number, and model number are located on the bottom edge or back of the tablet. You may need this information when you contact support.

Limited warranty

You can find the expressly provided HP Limited Warranty applicable to your product in the tablet box.

الإعداد السريع

1 قم بإعداد الكمبيوتر اللوحي، راجع دليل التشغيل السريع الذي يتم شحنه مع الكمبيوتر اللوحي.

2 (اختياري) قم بتوصيل قارئ بصمة الأصابع مع HP MSR أو HP MSR باليامة ❶ و ❷. ثم قم بالتوصيل الجانب الأيمن أو الأيسر من الحامل باستخدام المسامير المرفقة ❸. قم بتوصيل كابل USB بالمكنون المرفقة ❹، وتمديد الكابل عبر الفتحة الموجودة في الحامل وعبر مشبك الكابل ثم قم بتوصيل الطرف الآخر بالمحول. انظر ❶ و ❷ في الخطوة 3 الواردة أدناه.

3 قم بتوصيل الكمبيوتر اللوحي بالحامل HP ElitePad Connectivity ومحول التيار المتناوب الذي كمال يني. قم بتوجيه كابل المحو عبر الفتحة الموجودة في الحامل ❶، وخال مشبك الكابل ❷.

ملاحظة: لفتح مشبك الكابل، اضغط برفق لفتح المفصلة الجانب الأيمن.

قم بتوصيل كبل المحول بالمشف والموجود في الجانب السفلي من الكمبيوتر اللوحي ❸، وقم بتثبيت الكمبيوتر اللوحي في الحامل ❹، واتكمر ربط المسامير الأيهايمي لتثبيت الكمبيوتر اللوحي في الحامل ❺.

4 قم بتثبيت الكبلات. أغلق مشبك الكبل واضغط الكبل في الفتحة الموجودة في الجانب السفلي من الحامل ❶.

5 (اختياري) قم بتثبيت محول التيار المتناوب في سطح المنتج ❷.

ملاحظة: لا تشتمل مكونات المنتج على المسامير.

6 قم بتوصيل مصدر التيار بمحول التيار المتناوب.

7 قم بتوصيل كبل الشبكة وأجهزة USB. أعد تركيب غطاء المشف، وقم بتشغيل الكمبيوتر اللوحي.

معلومات هامة حول المنتج

دعم HP
توصيك شركة HP بتحديث البرامج وبرامج التشغيل باستخدام أحدث إصدار. للوصول إلى أحدث دلائل المستخدم وبرامج التشغيل أو الاتصال بالعم، ارجو حدد إلى <http://www.hp.com/support>، بلذك ثم اتبع التعليمات المعروضة على الشاشة.

موقع ومعلومات المنتج
يقع كل من رقم المنتج والرقم التسلسلي ورقم الوحدة على الحافة السفلي أو الجانب الخلفي من الكمبيوتر اللوحي. وقد تحتاج إلى هذه المعلومات عند الاتصال بالعم.

الضمان المحدود.
يمكنك العثور على الضمان المحدود من HP الساري على منتجك في صندوق الكمبيوتر اللوحي.

4 Secure the cables. Close the cable clip ❶ and press the cable into the relief notch on the bottom of the stand ❷.

5 (optional) Mount the AC adapter to a countertop.



6 Connect the power supply to the adapter.

7 Connect network cable and USB devices. Replace port cover and turn on tablet

8 Fix the cables. Close the cable clip ❶ and press the cable into the relief notch on the bottom of the stand ❷.

9 (optional) Mount the AC adapter to a countertop.

10 Connect the power supply to the adapter.

11 Connect network cable and USB devices. Replace port cover and turn on tablet

12 Fix the cables. Close the cable clip ❶ and press the cable into the relief notch on the bottom of the stand ❷.

13 (optional) Mount the AC adapter to a countertop.

14 Connect the power supply to the adapter.

15 Connect network cable and USB devices. Replace port cover and turn on tablet

16 Fix the cables. Close the cable clip ❶ and press the cable into the relief notch on the bottom of the stand ❷.

17 (optional) Mount the AC adapter to a countertop.

18 Connect the power supply to the adapter.

19 Connect network cable and USB devices. Replace port cover and turn on tablet

20 Fix the cables. Close the cable clip ❶ and press the cable into the relief notch on the bottom of the stand ❷.

Rychlá instalace

1 Nastavení tabletu. Viz také Úvodní příručka, která je dodávána s tabletem.

2 (volitelně) Připojte čtečku otisků prstů HP nebo HP MSR do svorky ❶ a ❷. Poté zařízení připojte k levé nebo pravé straně podstavce pomocí příložených šroubů ❸. Připojte kabel USB k součásti ❹, vedte kabel otvorem v podstavci a svorkou kabelu a připojte jeho druhý konek k adaptéru. Viz ❶ a ❷ v kroku 3 níže.

3 Připojte tablet k podstavci a adaptéru střídavého proudu Smart a HP ElitePad Connectivity podle pokynů níže. Vedte kabel adaptéru otvorem v podstavci ❶ a svorkou kabelu ❷.

POZNÁMKA: Pokud chcete otevřít svorku kabelu, jemně ji zmáčknete, aby se vyvěsila pravě strana.

Zapojte kabel adaptéru do portu na spodní straně tabletu ❸.

Vložte tablet do podstavce ❹ a utažením šroubu tablet zajistíte v podstavci ❺.

4 Zabezpečte kabely. Zavřete svorku kabelu ❶ a kabel zatačte do uvolňovací drážky na spodní straně podstavce ❷.

5 (volitelně) Připevňte adaptér střídavého proudu na pracovní desku.

POZNÁMKA: Šrouby nejsou součástí dodávky.

6 Připojte zdroj napájení k adaptéru.

7 Připojte síťový kabel a zařízení USB. Nasadte kryt portu a zapněte napájení tabletu.

Důležité informace o produktu

Podpora HP
Společnost HP doporučuje, abyste aktualizovali ovladače softwaru na nejnovější verzi.

Pokud chcete získat přístup k nejnovějším ovladačům a uživatelským příručkám nebo kontaktovat podporu, přejděte na stránky <http://www.hp.com/support>, vyberte svou zemi a postupujte podle pokynů na obrazovce.

Vešlejší informací o produktu
Číslo produktu, sériové číslo a číslo modelu jsou umístěny na spodní nebo zadní straně tabletu. Tyto informace můžete potřebovat při kontaktování podpory.

Omezená záruka
Výslovně uvedenou omezenou zárukou společnosti HP platnou pro tento výrobek získáte v krabici s tabletem.

4 Secure the cables. Close the cable clip ❶ and press the cable into the relief notch on the bottom of the stand ❷.

5 (optional) Mount the AC adapter to a countertop.

6 Connect the power supply to the adapter.

7 Connect network cable and USB devices. Replace port cover and turn on tablet

8 Fix the cables. Close the cable clip ❶ and press the cable into the relief notch on the bottom of the stand ❷.

9 (optional) Mount the AC adapter to a countertop.

10 Connect the power supply to the adapter.

11 Connect network cable and USB devices. Replace port cover and turn on tablet

12 Fix the cables. Close the cable clip ❶ and press the cable into the relief notch on the bottom of the stand ❷.

13 (optional) Mount the AC adapter to a countertop.

14 Connect the power supply to the adapter.

15 Connect network cable and USB devices. Replace port cover and turn on tablet

16 Fix the cables. Close the cable clip ❶ and press the cable into the relief notch on the bottom of the stand ❷.

17 (optional) Mount the AC adapter to a countertop.

18 Connect the power supply to the adapter.

19 Connect network cable and USB devices. Replace port cover and turn on tablet

20 Fix the cables. Close the cable clip ❶ and press the cable into the relief notch on the bottom of the stand ❷.

Kiirseedistus

1 Häälsetage tahvelarvuti. Vaadake tahvelarvutiga kaasas olevat kiirjuhendit.

2 (valikuline) Ühendage HP sõrmelajelditega ja HP MSR kanduriga ❶ ja ❷. Seejärel ühendage aluse parema või vasaku külgega, kasutades komplekti kuuluvat kruvisid ❸. Ühendage USB-kabel komponendiga ❹, suunake kaabel labi aluses oleva ava ja labi kaabiklambrile, seejärel ühendage teine ots adapteriga. Vaadake alpool 3. sammu punktide ❶ ja ❷.

3 Ühendage tahvelarvuti aluse ja HP ElitePad ühendusadapteri ning nulkia vahelduvvooluadapteriga, toimides järgmiselt. Suunake adapterikabel labi aluses oleva ava ❶ ja labi kaabiklambrisse ❷.

MÄRKUS. Kaabiklambril avamiseks vajutage seda õrnalt, et vabastada pool pool.

Zapojte kabel adaptéru do portu na spodní straně tabletu ❸.

Vložte tablet do podstavce ❹ a utažením šroubu tablet zajistíte v podstavci ❺.

4 Zabezpečte kabely. Zavřete svorku kabelu ❶ a kabel zatačte do uvolňovací drážky na spodní straně podstavce ❷.

5 (volitelně) Připevňte adaptér střídavého proudu na pracovní desku.

POZNÁMKA: Šrouby nejsou součástí dodávky.

6 Připojte zdroj napájení k adaptéru.

7 Připojte síťový kabel a zařízení USB. Nasadte kryt portu a zapněte napájení tabletu.

Ulutine tooteteave

HP tugi

HP soovib teil tarkvaradraiverid uusimale versioonile värskendada.

Seelaks et leida uusimad draiverid ja kasutusjuhendid või võtta ühendust tootjaga, minge aadressile <http://www.hp.com/support>, valige oma riik ning järgige kuvatavaid suuniseid.

Tooteaabe leidmine

Seerialnumbr, tootenumber ja mudelinumber asuvad tahvelarvuti alumises servas või tagaküljel. Neid andmeid võib minna vaja toega ühenduse võtmisel.

Piiratud garantii

Tootele kehtiva selgesõnalise HP piiratud garantiile laiate tahvelarvuti karbit.

4 Secure the cables. Close the cable clip ❶ and press the cable into the relief notch on the bottom of the stand ❷.

Kurzanleitung zur Installation

1 Richten Sie das Tablet ein. Lesen Sie das Quick Start-Handbuch, das im Lieferumfang des Tablets enthalten ist.

2 (optional) Verbinden Sie das HP Fingerabdruck-Lesegerät oder den HP MSR mit der Halterung ❶ und ❷. Schrauben Sie das Gerät dann mit den mitgelieferten Schrauben ❸ an die rechte oder linke Seite des Ständers. Schließen Sie ein USB-Kabel an die Komponente an ❹, führen Sie das Kabel durch die Öffnung im Ständer und durch den Kabelclip und schließen Sie dann das andere Ende an das Netzteil an. Siehe ❶ und ❷ in Schritt 3 (unten).

3 Verbinden Sie das Tablet wie folgt mit dem Ständer und dem HP ElitePad Connectivity- oder Smart-Netzteil. Führen Sie das Kabel des Netzteils durch die Öffnung im Ständer ❶ und durch den Kabelclip ❷.

HINWEIS: Um den Kabelclip zu öffnen, drücken Sie ihn vorsichtig, um die rechte Seite zu lösen.

Schließen Sie das Kabel des Netzteils an den Anschluss unten am Tablet an ❸.

Legen Sie das Tablet in den Ständer ein ❹ und ziehen Sie die Rändelschraube fest, um das Tablet im Ständer zu sichern ❺.

4 Sichern Sie die Kabel. Schließen Sie den Kabelclip ❶ und drücken Sie das Kabel in die Entlastungseinkerbung unten am Ständer ❷.

5 (optional) Bringen Sie das Netzteil an einer Arbeitsfläche an.

HINWEIS: Schrauben nicht im Lieferumfang enthalten.

6 Schließen Sie das Netzkabel an das Netzteil an.

7 Schließen Sie das Netzwerkkabel und die USB-Geräte an. Bringen Sie die Anschluss-Abdeckung wieder an und schalten Sie das Tablet ein.

Wichtige Produktinformationen

HP Support

HP anbefaler, at du opdaterer dine softwaredrivere til den nyeste version. For at få adgang til de nyeste drivere og brugervejledninger eller for at kontakte support skal du gå til <http://www.hp.com/support>, vælge dit land og derefter følge anvisningerne på skærmen.

Sådan finder du produktoplysninger
Serienummeret, produktnummeret og modelnummeret sidder på underkanten eller bag på tabletten. Du skal muligvis bruge disse oplysninger, når du kontakter support.

Begrenset garanti
Du finder den medfølgende udtrykkelige begrænsede HP-garanti, som gælder for dit produkt i tabletens æske.

Herstellersgarantie
Die ausdrücklich für Ihr Produkt geltende HP Herstellergarantie finden Sie in der Verpackung des Tablets.

Configuración rápida

1 Instale el tablet PC. Revise la Guía de consulta rápida que se entrega con el tablet PC.

2 (Opcional) Conecte el lector de huellas digitales HP o el MSR HP al soporte ❶ y ❷. Luego conéctelo al lado derecho o izquierdo de la base, utilizando los tornillos incluidos ❸. Conecte un cable USB al componente ❹, pase el cable a través de la abertura de la base y a través del clip de cable y luego conecte el otro extremo al adaptador. Consulte ❶ y ❷ en el paso 3 siguiente.

3 Conecte el tablet PC a la base, al adaptador de conectividad HP ElitePad y al adaptador de CA Smart, como se indica a continuación. Pase el cable del adaptador a través de la abertura de la base ❶ y a través del clip de cable ❷.

NOTA: Para abrir el clip de cable, apriete ligeramente para desenganchar la parte derecha.

Conecte el cable del adaptador al puerto en la parte inferior del tablet PC ❸.

Inserte el tablet PC en la base y ❹, y apriete el tornillo moleteado para fijar el tablet PC a la base ❺.

4 Sujete los cables. Cierre el clip del cable ❶ y enganche el cable en la muesca de liberación en la parte inferior de la base ❷.

5 (Opcional) Acople el adaptador de CA a una superficie fija.

NOTA: Los tornillos no están incluidos.

6 Conecte la fuente de alimentación al adaptador.

7 Conecte el cable de red y los dispositivos USB. Vuelva a colocar la cubierta del puerto y encienda el tablet PC.

4 Secure the cables. Close the cable clip ❶ and press the cable into the relief notch on the bottom of the stand ❷.

5 (optional) Mount the AC adapter to a countertop.

6 Connect the power supply to the adapter.

7 Connect network cable and USB devices. Replace port cover and turn on tablet

8 Fix the cables. Close the cable clip ❶ and press the cable into the relief notch on the bottom of the stand ❷.

9 (optional) Mount the AC adapter to a countertop.

10 Connect the power supply to the adapter.

11 Connect network cable and USB devices. Replace port cover and turn on tablet

12 Fix the cables. Close the cable clip ❶ and press the cable into the relief notch on the bottom of the stand ❷.

13 (optional) Mount the AC adapter to a countertop.

14 Connect the power supply to the adapter.

15 Connect network cable and USB devices. Replace port cover and turn on tablet

16 Fix the cables. Close the cable clip ❶ and press the cable into the relief notch on the bottom of the stand ❷.

17 (optional) Mount the AC adapter to a countertop.

18 Connect the power supply to the adapter.

19 Connect network cable and USB devices. Replace port cover and turn on tablet

20 Fix the cables. Close the cable clip ❶ and press the cable into the relief notch on the bottom of the stand ❷.

Brzo postavljanje

1 Postavite tablet. Pogledajte Vođić za brzi početak koji ste dobili s tabletom.

2 (dodatno) Spojite HP čitač otiska prsta ili HP MSR na nosač ❶ i ❷. Zatim spojite na desnu ili lijevu stranu postolja koristeći priložene vijke ❸. Spojite USB s komponentom ❹, provucite kabel kroz otvor u postolju i kroz stezaljku za kabele ❷.

OPREZ: Za otvaranje stezaljke za kabele lagano je stisnite dok se desna strana ne otvori. Priključite kabel prilagodnika u priključak na dnu tableta ❸. Umetnite tablet u postolje ❹ i stegnite vijak kako biste tablet pričvrstili za postolje ❺.

Osigurajte kabele. Zatvorite stezaljku za kabele ❶ i uisnite vijak na proćep na dnu postolja ❷.

(dodatno) Montirajte prilagodnik izmjenične struje na radnu površinu.

OPREZ: Vijci nisu u paketu.

6 Spojite napajanje s prilagodnikom.

7 Priključite mrežni kabel i USB uređaje. Vratite poklopac za priključke i uključite tablet.

4 Secure the cables. Close the cable clip ❶ and press the cable into the relief notch on the bottom of the stand ❷.

5 (dodatno) Montirajte prilagodnik izmjenične struje na radnu površinu.

OPREZ: Vijci nisu u paketu.

6 Spojite napajanje s prilagodnikom.

7 Priključite mrežni kabel i USB uređaje. Vratite poklopac za priključke i uključite tablet.

4 Secure the cables. Close the cable clip ❶ and press the cable into the relief notch on the bottom of the stand ❷.

5 (optional) Mount the AC adapter to a countertop.

6 Connect the power supply to the adapter.

7 Connect network cable and USB devices. Replace port cover and turn on tablet

8 Fix the cables. Close the cable clip ❶ and press the cable into the relief notch on the bottom of the stand ❷.

9 (optional) Mount the AC adapter to a countertop.

10 Connect the power supply to the adapter.

11 Connect network cable and USB devices. Replace port cover and turn on tablet

12 Fix the cables. Close the cable clip ❶ and press the cable into the relief notch on the bottom of the stand ❷.

13 (optional) Mount the AC adapter to a countertop.

14 Connect the power supply to the adapter.

15 Connect network cable and USB devices. Replace port cover and turn on tablet

16 Fix the cables. Close the cable clip ❶ and press the cable into the relief notch on the bottom of the stand ❷.

17 (optional) Mount the AC adapter to a countertop.

18 Connect the power supply to the adapter.

19 Connect network cable and USB devices. Replace port cover and turn on tablet

20 Fix the cables. Close the cable clip ❶ and press the cable into the relief notch on the bottom of the stand ❷.

Gyors üzembe helyezés

1 Állítsa be a táblagépet. Tekintse meg a táblagépre mellékelt Első lépések című kiadványt.

2 (opcionális) Csatlakoztassa az állványhoz és a HP ElitePad Connectivity-t a HP USB-nyomat-otvarra a HP MSR-en a bilincsenek ❶ és ❷. Ezután csatlakoztassa az állvány jobb és bal oldalához a mellékelt csavarokkal ❸. Csatlakoztasson USB kábelt a ❹, majd húzza meg a táblagépet a lase és a táblagépet az állványhoz ❺.

3 Csatlakoztassa a táblagépet az állványhoz és a HP ElitePad Connectivity-t a Smart AC adapterhez az alábbiak szerint. Vezesse keresztül az adapterkábelt az állványban lévő nyíláson ❶ és a kábelkapcsan ❷.

MEGJEGYZÉS: A kábelkapocs kinyitáshoz finoman tekerje el, hogy a jobb oldalon kiakasszódjon.

Priključite kabel prilagodnika u priključak na dnu tableta ❸.

Umetnite tablet u postolje ❹ i stegnite vijak kako biste tablet pričvrstili za postolje ❺.

Osigurajte kabele. Zatvorite stezaljku za kabele ❶ i uisnite vijak na proćep na dnu postolja ❷.

(dodatno) Montirajte prilagodnik izmjenične struje na radnu površinu.

OPREZ: Vijci nisu u