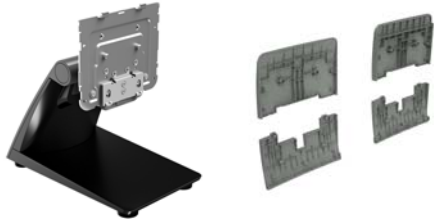




Installation Instructions

HP RP9 Compact Stand



© Copyright 2016 HP Development Company, L.P.
The information contained herein is subject to change without notice.

Printed in

Second Edition: February 2016

First Edition: February 2016



844016-002

Before you begin

1. Save all files and shut down the computer properly through the operating system, and then turn off any external devices.
2. Disconnect the power cord from the AC outlet, and disconnect all cables from the rear of the computer.

⚠ WARNING! To avoid the risk of serious injury or damage to the system, ensure that the power cord is unplugged from the AC outlet at the wall before installing this product. Failure to do so may expose you to the risk of electric shock.

📄 NOTE: For regulatory and safety notices, refer to the *Product Notices* included with your product.

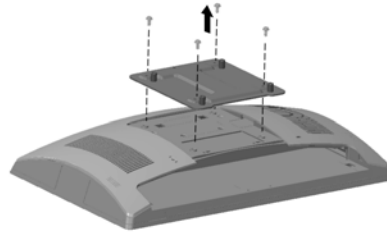
Product support

For the online access to technical support information, self-solve tools, online assistance, community forums or IT experts, broad multivendor knowledge base, monitoring and diagnostic tools, go to www.hp.com/support.

📄 NOTE: If you need help preparing your computer model for this installation, refer to the documentation provided with the computer, or go to www.hp.com/support to locate the manual for your model.

Removing the VESA plate

You may need to remove the VESA plate from the rear of the RP9 before installing the stand. Remove the four screws securing the VESA plate, and then remove the plate.



Installing the VESA cover

1. Select the VESA cover for your RP9 model size.

15.6" RP9 model

18.5" RP9 model



2. Angle the top section of the VESA cover toward the top side of the stand's hinge ①, and then press the section down onto the mounting bracket ②. Angle the bottom section of the VESA cover toward the bottom side of the stand's hinge ③, and then press the section down onto the mounting bracket ④.



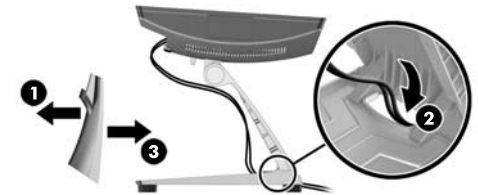
Installing the stand

1. Lay the RP9 face down on a flat surface covered by a soft clean cloth.
2. Slide the tabs on the top of the stand mount into the slots on the display head ①, and then rotate the bottom of the stand mount down onto the display head so that it snaps into place ②.



Routing cables

1. Connect the cables to the appropriate rear connectors.
2. Remove the cable routing cover from the neck of the stand ①.
3. Route the cables from the connectors on the rear panel down the neck of the stand, and then through the hole in the center of the base ② and out the underside of the base.
4. Replace the cable routing cover on the neck of the stand to cover the cables ③.

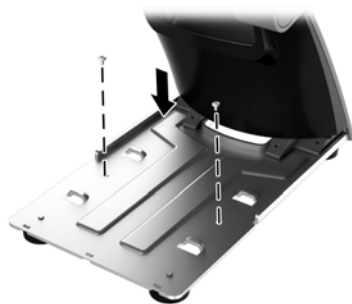


Securing the stand to a countertop

1. Remove the cover from the neck of the stand ❶, and then slide the base cover forward and lift it off the base ❷.



2. Fasten the stand to a countertop using the appropriate fastening devices (not provided by HP) for your surface.

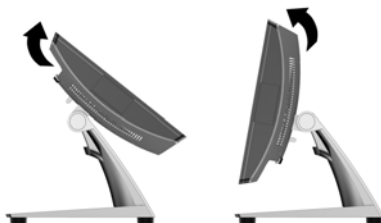


3. Slide the base cover onto the base of the stand ❶, and then replace the neck cover on the neck of the stand ❷.



Adjusting the stand

Adjust the display head to the appropriate position for your application. The suggested working angle is -5 degrees to 80 degrees.



Removing the stand

1. Lay the RP9 face down on a flat surface covered by a soft clean cloth.
2. Push up the release latch on the rear of the display head ❶, tilt the stand back ❷, and then lift the stand from the display head ❸.



Documentation feedback

HP is committed to providing documentation that meets your needs. To help us improve the documentation, please send any suggestions, comments, or errors to doc.feedback@hp.com. Include the document title and part number (located near the barcode) when submitting your feedback.