

Optical Drive Replacement Instructions



925495-001



Before you begin

Observe the following requirements before removing and replacing the optical drive.

WARNING: To reduce the risk of serious injury or damage to the equipment, do not open the chassis cover of any unit with a 750W power supply. To determine if you have a 300W, 500W or 750W power supply, refer to the label on the rear of the computer.

CAUTION: Never open the cover with the power cord attached or power applied. You might damage your computer or be injured by the spinning fan blades.

CAUTION: Avoid touching sharp edges inside the computer.

NOTICE: Static electricity can damage the electronic components inside the computer. Discharge static electricity by touching the metal cage of the computer before touching any internal parts or electronic components.

Tools needed

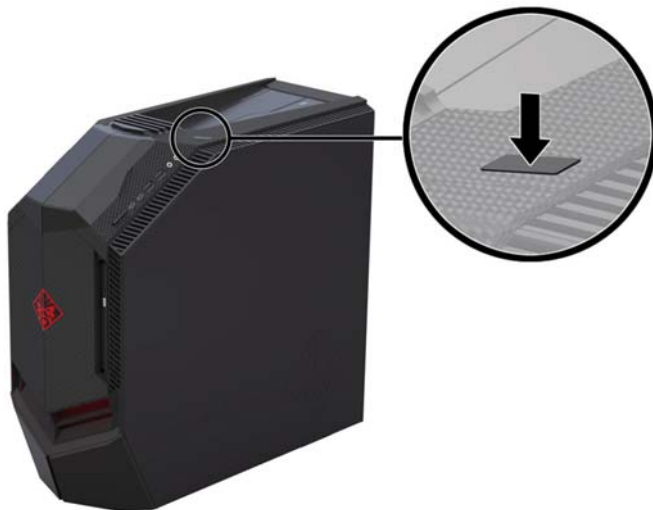
Phillips #2 screwdriver

Small screws are easily lost. Remove screws over a surface that enables you to retrieve them if they fall.

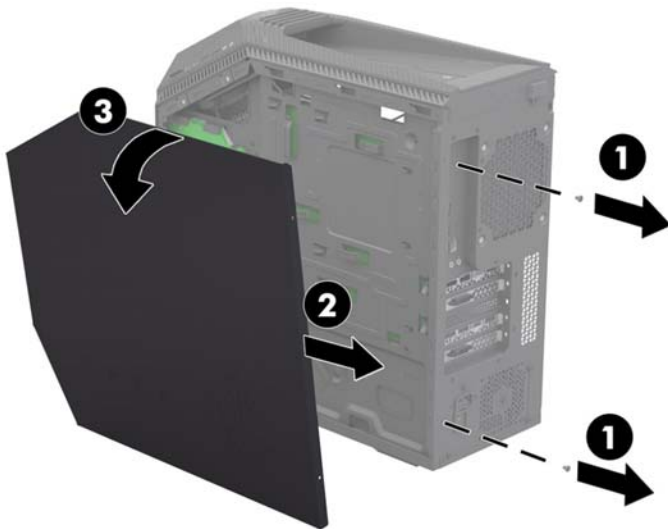
NOTE: Computer appearance and features may vary by model.

Removing the optical drive

1. Press the power button to turn off the computer.
2. Disconnect the power cord and all attached cables from the back of the computer.

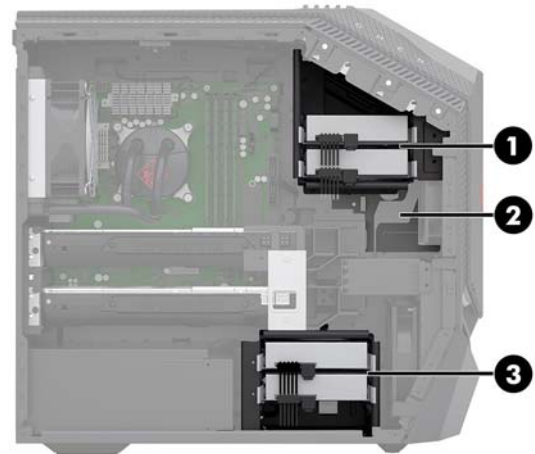


3. Remove the access panel by removing the two screws (1), sliding the access panel back (2), and then rotating it down and off the computer (3).



4. Locate the optical drive:

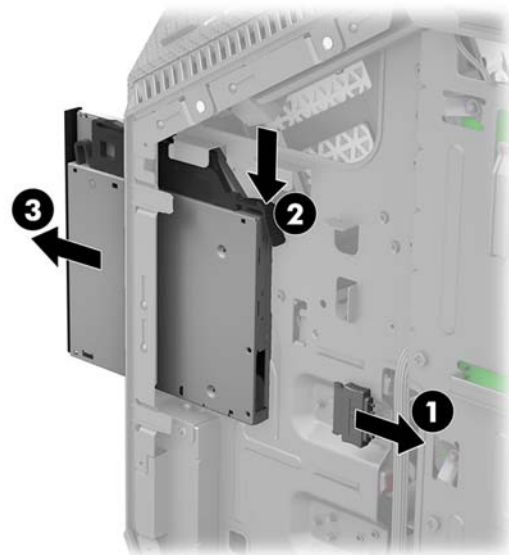
1. Top hard drives
- 2. Optical drive**
3. Side hard drives



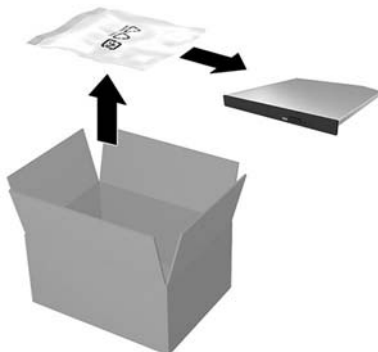
5. To remove an optical drive insert: Push the release latch toward the center of the insert (1), and then slide the insert out of the computer (2).



6. To remove an optical drive: Disconnect the data and power connector from the rear of the drive (1), push the release latch toward the center of the drive (2), and then slide the drive out of the computer (3).

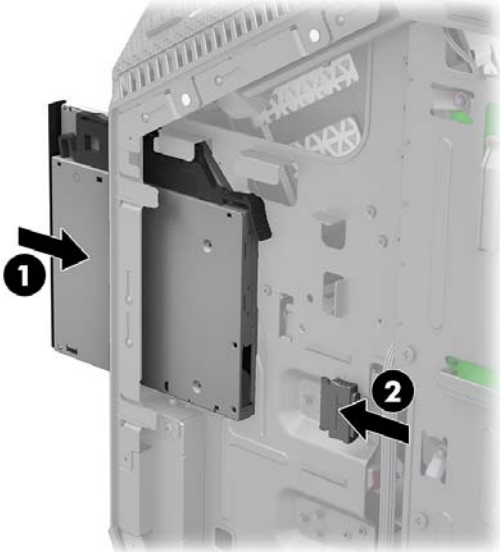


7. Touch the replacement optical drive bag to the metal of the computer, and then remove the replacement optical drive from the bag.

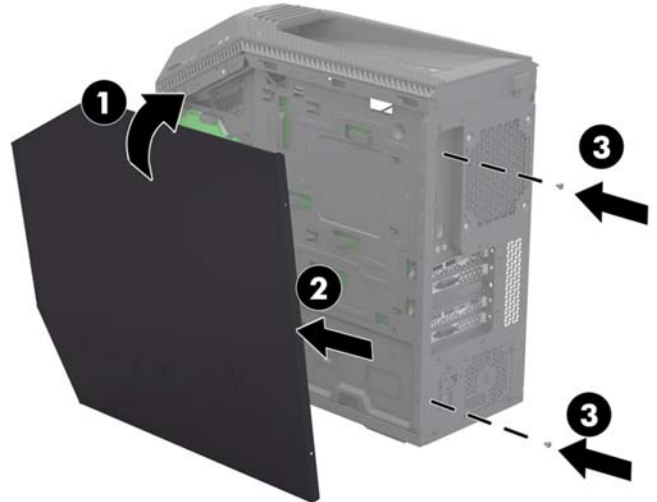


Replacing the optical drive

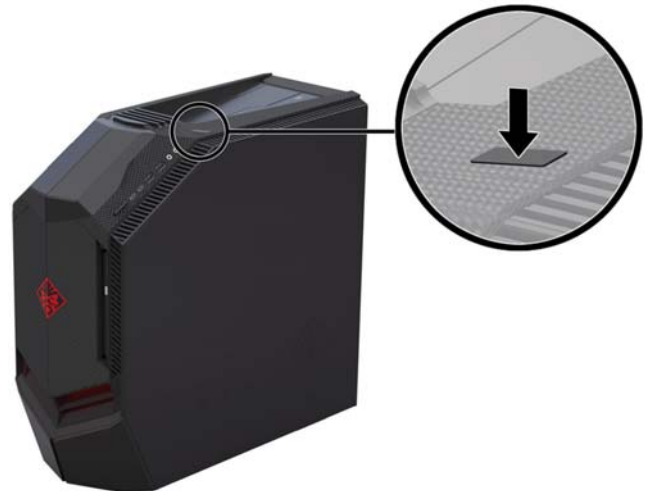
1. Slide the optical drive through the front bezel all the way into the bay so that it locks into place **(1)**, and then connect the power and data connector to the rear of the drive **(2)**.



2. Position the access panel with the back of the panel extending slightly beyond the back of the computer. Rotate the top of the panel onto the side of the computer **(1)**, and then slide it forward into place **(2)**. Replace the two screws in the back edge of the access panel **(3)**.



3. Plug the power cord and any additional cables into the back of the computer.
4. Press the power button to turn on the computer.



© Copyright 2017 HP Development Company, L.P.

The information contained herein is subject to change without notice. The only warranties for HP products and services are set forth in the express warranty statements accompanying such products and services. Nothing herein should be construed as constituting an additional warranty. HP shall not be liable for technical or editorial errors or omissions contained herein.

First Edition: April 2017

PRINTER: Replace this box with Printed-In (PI) Statement(s) as per spec.

NOTE: This box is simply a placeholder. PI Statement(s) do not have to fit inside the box but should be placed in this area.

