



Color LaserJet Pro MFP M178-M181 Getting Started Guide



English.....	1
Bahasa Indonesia.....	5
한국어	9
ไทย	13
繁體中文.....	17
Tiếng Việt.....	21

www.hp.com/support/ljM178MFP

www.register.hp.com

IMPORTANT:

Follow **Steps 1 - 2** on the printer hardware setup poster, then continue with **Step 3**.



3. Initial setup on the control panel

At the printer control panel, check the display status before beginning software installation.

4. Select the connection method

USB connection directly between the printer and the computer

Use an A-to-B type USB cable.

Windows

1. Do not connect the USB cable before installing the software. The installation process prompts to connect the cable at the appropriate time. If the cable is already connected, restart the printer when installation prompts to connect the cable.
2. Continue to **"5. Download and install the software."**

OS X

1. For OS X, connect the USB cable between the computer and the printer before installing the software.
2. Continue to **"5. Download and install the software."**

Wired Ethernet network connection (Optional)

Use a standard network cable.

1. Connect the network cable to the printer and to the network. Wait a few minutes for the printer to acquire a network address.
2. Continue to **"5. Download and install the software."**

Wireless network connection (wireless models only) 2-line control panels

1. To connect the printer to a wireless (Wi-Fi) network, make sure that the printer, access point, and computer are turned on and that the computer is connected to the wireless network.
2. A USB cable might be required during software installation.
3. To print from a computer, continue with **"5. Download and install the software."** To print from a phone or tablet only, continue with **"6. Mobile printing (optional)."**

Manually configure the IP address

See the printer user guide for information on how to manually configure the IP address www.hp.com/support/ljM178MFP.



T6B70-90904

5. Download and install the software



Method 1: Download HP Easy Start (Windows and OS X)

1. Go to 123.hp.com/laserjet, and click **Download**.
2. Follow the on-screen instructions and prompts to save the file to the computer.
3. Launch the software file from the folder where the file was saved.



Method 2: Download from printer support website (Windows and OS X)

1. Go to www.hp.com/support/ljM178MFP.
2. Select **Software and drivers**.
3. Download the software for your printer model and operating system.
4. Launch the software file from the folder where the file was saved.



Method 3: Install from the printer CD (Windows only)

1. Insert the printer CD into the computer.
2. Follow the on-screen instructions to install the software.

i Install Notes

For more details about the software for the printer, see the install notes file on the printer CD.

Readiris Pro for HP

Readiris Pro provides your HP product with advanced OCR and scanning features. Easily convert your paper documents into editable and searchable PDF files, ready to be stored and shared. To download the software from the Web, go to: www.hp.com/support/ljM178MFP

Select **Drivers**, select the appropriate operating system, and click **Next**. Click **Application - 3rd Party**, and then click the **Download** button.

6. Mobile printing (optional)

6.1 Connect the device to the wireless network

To print from a phone or tablet, connect the device to the same wireless network as the printer.

Apple iOS devices (AirPrint): Open the item to print, and select the Action icon. Select **Print**, select the printer, and then select **Print**.

Android devices (4.4 or newer): Open the item to print, and select the **Menu** button. Select **Print**, select the printer, and select **Print**.

Some devices require downloading the HP Print Service plugin app from the Google Play store.

Windows Phone: Download the HP AiO Remote app from the Windows Store.

i Learn more about mobile printing

For further information on these and other operating systems (Chrome/Google Cloud Print) go to www.hp.com/go/LaserJetMobilePrinting, or scan the QR code.




6.2 Wi-Fi Direct (wireless models only)

Wi-Fi Direct allows Wi-Fi capable devices, such as smart phones, tablets, or computers, to make a wireless network connection directly to the printer without using a wireless router or access point. Connect to the printer's Wi-Fi Direct signal the same way Wi-Fi capable devices are connected to a new wireless network or hotspot.

Enable Wi-Fi Direct

Enable Wi-Fi Direct in the HP Embedded Web Server (EWS) by following these steps:

1. On the printer control panel, press the Setup  button, and then open the **Network Setup** menu.
2. Open the following menus:
 - **Wi-Fi Direct**
 - **On/Off**
3. Select the **On** menu item. Selecting the **Off** button disables Wi-Fi Direct printing.

i For more information on wireless printing and wireless setup, go to www.hp.com/go/wirelessprinting.

Discover the printer

1. From the mobile device, turn on the Wi-Fi, and search for wireless networks.
2. Select the printer as shown on the printer control panel.
Example printer name: Direct-bb-HP M277 Laserjet

7. Set up HP ePrint via email (optional)

Use HP ePrint via email to print documents by sending them as an email attachment to the printer's email address from any email enabled device, even from devices that are not on the same network.

To use HP ePrint via email, the printer must meet these requirements:

- The printer must be connected to a wired or wireless network and have Internet access.
- HP Web Services must be enabled on the printer, and the printer must be registered with HP Connected.


Enable HP Web Services (wireless models only)

1. After the printer is connected to the network, print a configuration page and identify the printer IP address.
2. At the computer, open a web browser and enter the printer IP address into the address line. The HP Embedded Web Server (EWS) opens.
3. Select the **HP Web Services** tab, and click the **Enable** button. The printer configures the connection to the Internet, and then a message appears indicating an information sheet will print
4. Click the **OK** button. An ePrint page prints out. On the ePrint page, look for the e-mail address that is automatically assigned to the printer.

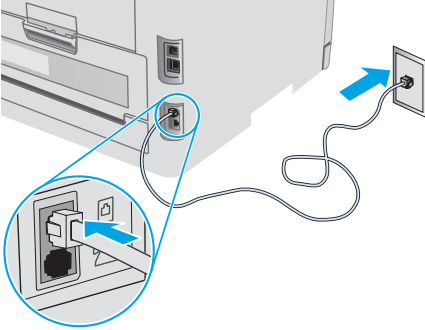
8. Set up fax (fax models only - optional)

8.1 Connect the printer

The printer is an analog device. HP recommends using the printer on a dedicated analog telephone line.

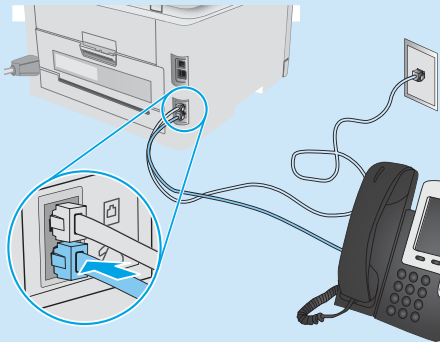
 **NOTE:** Some countries/regions might require an adapter for the phone cord that came with the printer.

Connect the phone cord that came with the printer to the Fax port on the printer and to the telephone jack on the wall.



How do I connect an answering machine or extension phone?

1. Remove the plug from the phone port.
2. Disconnect the answering machine phone cord from the phone jack, and then connect it to the phone port on the printer.
3. Connect the phone cord that came with the printer to the fax port on the printer and to the telephone jack on the wall.



How do I set up HP printers in digital phone environments?

HP printers are designed specifically for use with traditional analog phone services. For a digital phone environment (such as DSL/ADSL, PBX, ISDN, or FoIP), digital-to-analog filters or converters might be necessary when setting up the printer for fax.

Note: Depending on the phone company, the printer might not be compatible with all digital service lines or providers, in all digital environments, or with all digital-to-analog converters. Contact the phone company to determine which setup options are best.

Note: When setting up ring pattern detection in a PBX phone system that has different ring patterns for internal and external calls, make sure to dial the printer fax number using an external number for recording the ring pattern.

8.2 Configure the printer

Configuring the fax time, date, and header settings is required to use the fax feature.

HP Fax Setup Wizard (Windows)

1. Open the HP Printer Assistant.
 - **Windows 10:** From the **Start** menu, click **All Apps**, click **HP**, and then select the printer name.
 - **Windows 8.1:** Click the down arrow in lower left corner of the Start screen, and then select the printer name.
 - **Windows 8:** Right-click an empty area on the Start screen, click **All Apps** on the app bar, and then select the printer name.
 - **Windows 7, Windows Vista, and Windows XP:** From the computer desktop, click **Start**, select **All Programs**, click **HP**, click the folder for the printer, select the icon with the printer's name, and then open **HP Printer Assistant**.
2. In the HP Printer Assistant, select **Fax**, and then select **Fax Setup Wizard**.
3. Follow the on-screen instructions to configure the fax settings.

Basic Setup menu

1. On the printer control panel, press the Setup button.
2. Select **System Setup**, and then select **Time/Date**.
3. Select **Time/Date**.
4. Select the **12-hour** or **24-hour**.
5. Use the keypad to enter the current time, and then press the **OK** button.
6. Select the date format.
7. Use the keypad to enter the current date, and then press the **OK** button.
8. From the **Setup** menu, select **Fax Setup**, and then select **Fax Header**.
9. Use the keypad to enter the fax number, and then press the **OK** button.

NOTE: The maximum number of characters for the fax number is 20.
10. Use the keypad to enter your company name or header, and then press the **OK** button.

NOTE: The maximum number of characters for the fax header is 40.

Learn more!

For more information about other ways to send faxes, such as scheduling a fax to be sent later or sending faxes from a computer, see the user guide on the printer CD, or go to:

www.hp.com/support/ljm178MFP

9. Use the scan feature

Use the HP Scan software on your computer to start a scan job at the printer.

Windows

Open **HP Printer Assistant**, select **Scan**, and then select **Scan a Document or Photo**.

OS X

Go to the **Applications** folder and open **HP Easy Scan**.

Troubleshooting

User guide

The user guide includes printer usage and troubleshooting information. It is available on the printer CD and on the Web:

1. Go to www.hp.com/support/ljM178MFP
2. Select the printer if prompted to, and then click **User Guides**.

Check for firmware updates

1. Go to www.hp.com/support/ljM178MFP
2. Select the printer if prompted to, and then click **Software and Drivers**.
3. Select the operating system, and click the **Next** button.
4. Select **Firmware**, and click the **Download** button.

Resolve error code messages (LED control panels)

Error code	Action
ER 01	Load paper
ER 02	Close the front door
ER 04, ER 05, ER 06	Clear paper jam
ER 27	Remove excess paper from Tray 1

Additional support resources

For HP's all-inclusive help for the printer, go to: www.hp.com/support/ljM178MFP

- Solve problems
- Find advanced configuration instructions
- Download software updates
- Join support forums
- Find warranty and regulatory information
- Access mobile printing resources

Wired (Ethernet) network connection (optional)

- Verify that the printer is attached to the correct network port using a cable of the correct length.
- Verify the lights next to the network port are lit.
- Verify the print driver is installed on the computer.
- Test the network connection by pinging the network:

Windows

Click **Start > Run**. Type **cmd**, and press **Enter**. Type **ping**, type a space, type the printer IP address, and then press **Enter**. **Example IP address:** 192.168.0.1. To find the printer IP, see "Find the printer IP address."

OS X

Open the Network Utility, and type the IP address in the **ping** pane. Press **Enter**. **Example IP address:** 192.168.0.1. To find the printer IP, see "Find the printer IP address."


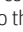
- If the window displays round-trip times, the network is working.
- If the ping does not work, try restarting the printer and recheck all of the connection steps.

Wireless network connection (wireless models)

- Verify that the network cable is not connected. The printer cannot connect to a wireless network when a network cable is connected.
- Verify that the printer and wireless router are turned on and have power. Also make sure the wireless switch is turned on.
- Verify that the printer is within the range of the wireless network. For most networks, the printer must be within 30 m (100 ft) of the wireless access point (wireless router).
- Verify the print driver is installed on the computer.
- Verify that the computer and printer connect to the same wireless network.
- For Mac, verify that the wireless router supports Bonjour.
- Restart the wireless router.

Fax troubleshooting (fax models only)

Verify the physical connection

- Verify that the phone cord is connected to the fax  port on the back of the printer and to the wall jack.
- For an extension phone or other additional device, verify the phone cord is connected to the telephone  port on the back of the printer and to the device.
- If outgoing phone calls fail because no dial tone is detected or the line is busy, connect to a different phone line.
- For Fax over IP service, reduce the **Fax Speed**, and turn off **Error Correction Mode** from the **Fax Settings** menu on the printer control panel.

Verify the printer fax settings

- To use a voice-mail service from the phone company or service provider, make sure that the printer **Rings to Answer** setting is set to be fewer rings than the telephone answering machine.
- If multiple phone numbers are assigned to the same physical phone line and the line is shared by multiple devices, make sure that the printer is set to the correct distinctive ring setting. Use a setting in which the printer answers faxes and ignores other ring types.
- Configuring the Fax Speed setting to **Medium (V.17)** or **Slow (V.29)** can also improve your ability to send a fax.



Panduan Persiapan Color LaserJet Pro MFP M178-M181

English.....1

Bahasa Indonesia.....5

한국어.....9

ไทย.....13

繁體中文.....17

Tiếng Việt.....21

 www.hp.com/support/ljM178MFP

 www.register.hp.com

PENTING:

Ikuti **Langkah 1-2** pada poster konfigurasi perangkat keras printer, lalu lanjutkan dengan **Langkah 3**.



3. Konfigurasi awal pada panel kontrol

Pada panel kontrol printer, periksa status layar sebelum memulai penginstalan perangkat lunak.

4. Memilih metode sambungan

Sambungan USB secara langsung antara printer dan komputer

Gunakan kabel USB jenis A-ke-B.

Windows

1. Jangan sambungkan kabel USB sebelum menginstal perangkat lunak. Proses penginstalan meminta untuk menyambungkan kabel pada waktu yang tepat. Jika kabel telah tersambung, hidupkan ulang printer saat penginstalan meminta untuk menyambungkan kabel.
2. Lanjutkan ke **"5. Men-download dan menginstal perangkat lunak"**.

OS X

1. Untuk OS X, sambungkan kabel USB antara komputer dan printer sebelum menginstal perangkat lunak.
2. Lanjutkan ke **"5. Men-download dan menginstal perangkat lunak"**.

Sambungan jaringan Ethernet berkabel (opsional)

Gunakan kabel jaringan standar.

1. Sambungkan kabel jaringan ke printer dan jaringan. Tunggu beberapa menit agar printer mendapatkan alamat jaringan.
2. Lanjutkan ke **"5. Men-download dan menginstal perangkat lunak"**.

Sambungan jaringan nirkabel (hanya model nirkabel)

Panel kontrol 2 baris

1. Untuk menyambungkan printer ke jaringan nirkabel (Wi-Fi), pastikan printer, jalur akses, dan komputer telah dihidupkan dan komputer tersambung ke jaringan nirkabel.
2. Kabel USB mungkin diperlukan saat penginstalan perangkat lunak berlangsung.
3. Untuk mencetak dari komputer, lanjutkan dengan **"5. Download dan instal perangkat lunak."** Untuk mencetak hanya dari telepon atau tablet, lanjutkan dengan **"6. Pencetakan seluler (opsional)."**

Mengkonfigurasi alamat IP secara manual

Lihat panduan pengguna printer untuk mendapatkan informasi tentang cara mengkonfigurasi alamat IP secara manual www.hp.com/support/ljM178MFP.

5. Men-download dan menginstal perangkat lunak



Metode 1: Download HP Easy Start (Windows dan OS X)

1. Kunjungi 123.hp.com/laserjet, lalu klik **Download**.
2. Ikuti petunjuk pada layar dan konfirmasi untuk menyimpan file di komputer.
3. Jalankan file perangkat lunak dari folder tempat menyimpan file.



Metode 2: Download dari situs web dukungan printer (Windows dan OS X)

1. Kunjungi www.hp.com/support/ljM178MFP.
2. Pilih **Software and drivers** (Perangkat lunak dan driver).
3. Download perangkat lunak untuk model printer dan sistem operasi Anda.
4. Jalankan file perangkat lunak dari folder tempat menyimpan file.



Metode 3: Instal dari CD printer (hanya Windows)

1. Masukkan CD printer ke komputer.
2. Ikuti petunjuk pada layar untuk menginstal perangkat lunak.

! Catatan Penginstalan

Untuk informasi lebih rinci tentang perangkat lunak printer, lihat file catatan penginstalan pada CD printer.

Readiris Pro untuk HP

Readiris Pro melengkapi produk HP Anda dengan OCR dan fitur pemindaian tingkat lanjut. Konversikan dokumen kertas Anda dengan mudah menjadi file PDF yang dapat diedit dan dicari, siap untuk disimpan dan dibagikan. Untuk men-download perangkat lunak dari web, kunjungi: www.hp.com/support/ljM178MFP

Pilih **Drivers** (Driver), pilih sistem operasi yang tepat, lalu klik **Next** (Berikutnya). Klik **Application - 3rd Party** (Aplikasi Pihak Ketiga), lalu klik tombol **Download**.

6. Pencetakan seluler (opsional)

6.1 Menyambungkan perangkat ke jaringan nirkabel

Untuk mencetak dari telepon atau tablet, sambungkan perangkat ke jaringan nirkabel yang sama dengan printer.

Perangkat Apple iOS (AirPrint): Buka item untuk dicetak, lalu pilih ikon Action (Tindakan). Pilih **Print** (Cetak), pilih printer, lalu pilih **Print** (Cetak).

Perangkat Android (4.4 atau versi lebih baru): Buka item yang akan dicetak, lalu pilih tombol **Menu**. Pilih **Print** (Cetak), pilih printer, lalu pilih **Print** (Cetak).

Perangkat tertentu mengharuskan Anda men-download aplikasi plugin Layanan HP Print dari Google Play store.

Windows Phone: Download aplikasi HP AiO Remote dari Windows Store.

! Selengkapnya tentang pencetakan seluler

Untuk informasi lebih lanjut tentang hal ini dan sistem operasi lainnya (Chrome/Google Cloud Print), kunjungi www.hp.com/go/LaserJetMobilePrinting, atau pindai kode QR.




6.2 Wi-Fi Direct (hanya model nirkabel)

Wi-Fi Direct memungkinkan perangkat yang mendukung Wi-Fi, misalnya smartphone, tablet, atau komputer, membuat sambungan jaringan nirkabel langsung ke printer tanpa menggunakan router atau jalur akses nirkabel. Sambungkan ke sinyal Wi-Fi Direct printer menggunakan cara yang sama seperti menyambungkan perangkat yang mendukung Wi-Fi ke jaringan nirkabel atau hotspot baru.

Mengaktifkan Wi-Fi Direct

Aktifkan Wi-Fi Direct dalam HP Embedded Web Server (EWS) dengan mengikuti langkah berikut:

1. Pada panel kontrol printer, tekan tombol Setup (Konfigurasi) , lalu buka menu **Network Setup** (Pengaturan Jaringan).
2. Buka menu berikut:
 - **Wi-Fi Direct**
 - **On/Off (Aktif/Tidak Aktif)**
3. Pilih item menu **On** (Aktif). Memilih tombol **Off** (Tidak Aktif) akan menonaktifkan pencetakan Wi-Fi Direct.

! Untuk informasi selengkapnya tentang pencetakan dan pengaturan nirkabel, kunjungi www.hp.com/go/wirelessprinting.

Menemukan printer

1. Dari perangkat bergerak, aktifkan Wi-Fi, lalu cari jaringan nirkabel.
2. Pilih printer yang ditunjukkan pada panel kontrol printer.
Contoh nama printer: Direct-bb-HP M277 Laserjet

7. Mengkonfigurasi HP ePrint melalui email (opsional)

Gunakan HP ePrint via email untuk mencetak dokumen dengan mengirimnya sebagai lampiran email ke alamat email printer dari perangkat apa pun yang mendukung email, bahkan dari perangkat di jaringan yang berbeda.

Untuk menggunakan HP ePrint via email, printer harus memenuhi persyaratan berikut ini:

- Printer harus disambungkan ke jaringan berkabel atau nirkabel dan memiliki akses Internet.
- Layanan Web HP harus diaktifkan di printer, dan printer harus terdaftar di HP Connected.

Mengaktifkan HP Web Services (hanya model nirkabel)

1. Setelah printer terhubung ke jaringan, cetak halaman konfigurasi dan temukan alamat IP printer.
2. Di komputer, buka browser web, lalu masukkan alamat IP printer di baris alamat. HP Embedded Web Server (EWS) akan terbuka.
3. Pilih tab **HP Web Services** (Layanan Web HP), lalu klik tombol **Enable** (Aktifkan). Printer mengkonfigurasi sambungan ke Internet, lalu pesan ditampilkan untuk menunjukkan bahwa lembar informasi akan dicetak
4. Klik tombol OK. Halaman ePrint dicetak. Pada halaman ePrint, cari alamat email yang ditentukan secara otomatis ke printer.

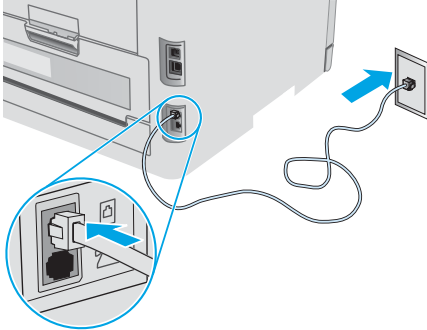
8. Mengkonfigurasi faks (hanya model faks - opsional)

8.1 Menyambungkan printer

Printer ini adalah perangkat analog. HP menganjurkan penggunaan printer pada saluran telepon analog khusus.

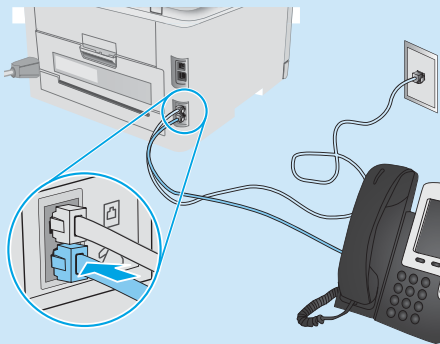
CATATAN: Adapter mungkin diperlukan di beberapa negara/kawasan tertentu untuk menggunakan kabel telepon yang disertakan bersama printer.

Sambungkan kabel telepon yang disertakan bersama printer ke port Faks pada printer dan ke soket telepon di dinding.



Bagaimana menyambungkan mesin penjawab atau telepon ekstensi?

1. Lepas konektor dari port telepon.
2. Lepas sambungan kabel telepon mesin penjawab dari soket telepon, lalu sambungkan ke port telepon pada printer.
3. Sambungkan kabel telepon yang disertakan bersama printer ke port faks pada printer dan ke soket telepon di dinding.



Bagaimana cara mengkonfigurasi printer HP dalam lingkungan telepon digital?

Printer HP dirancang khusus untuk digunakan bersama layanan telepon analog biasa. Untuk lingkungan telepon digital (misalnya, DSL/ADSL, PBX, ISDN, atau FoIP), filter atau konverter digital ke analog mungkin diperlukan bila mengkonfigurasi printer untuk faks.

Catatan: Berdasarkan perusahaan telepon, printer mungkin tidak kompatibel dengan semua saluran atau penyedia layanan digital, di semua lingkungan digital, atau dengan semua konverter digital ke analog. Hubungi perusahaan telepon untuk menentukan pilihan konfigurasi terbaik.

Catatan: Saat mengkonfigurasi deteksi pola dering dalam sistem telepon PBX yang memiliki pola dering yang berbeda untuk panggilan internal dan eksternal, pastikan Anda menekan nomor faks printer menggunakan nomor eksternal untuk merekam pola dering.

8.2 Mengkonfigurasi printer

Mengkonfigurasi pengaturan waktu, tanggal, dan kepala faks diperlukan agar dapat menggunakan fitur faks.

Wizard Pengaturan Faks HP (Windows)

1. Buka HP Printer Assistant.
 - **Windows 10:** Dari menu **Start** (Mulai), klik **All Apps** (Semua Aplikasi), klik **HP**, lalu pilih nama printer.
 - **Windows 8.1:** Klik panah bawah pada sudut kiri bawah layar **Start** (Mulai), lalu pilih nama printer.
 - **Windows 8:** Klik kanan di area kosong pada layar **Start** (Mulai), klik **All Apps** (Semua aplikasi) pada panel aplikasi, lalu pilih nama printer.
 - **Windows 7, Windows Vista, dan Windows XP:** Dari desktop komputer, klik **Start** (mulai), pilih **All Programs** (Semua Program), klik **HP**, klik folder untuk printer, pilih ikon dengan nama printer, lalu buka **HP Printer Assistant**.
2. Pada **HP Printer Assistant**, pilih **Fax** (Faks), lalu pilih **Fax Setup Wizard** (Wizard Pengaturan Faks).
3. Ikuti petunjuk di layar untuk mengkonfigurasi pengaturan faks.

Menu Pengaturan Dasar

1. Pada panel kontrol printer, tekan tombol **Setup** (Pengaturan).
2. Pilih **System Setup** (Pengaturan Sistem), lalu pilih **Time/Date** (Waktu/Tanggal).
3. Pilih **Time/Date** (Waktu/Tanggal).
4. Pilih format **12-hour** (12 jam) atau **24-hour** (24 jam).
5. Gunakan keypad untuk memasukkan waktu sekarang, lalu tekan tombol **OK**.
6. Pilih format tanggal.
7. Gunakan keypad untuk memasukkan tanggal sekarang, lalu tekan tombol **OK**.
8. Dari menu **Setup** (Pengaturan), pilih **Fax Setup** (Pengaturan Faks), lalu pilih **Fax Header** (Kepala Faks).
9. Gunakan keypad untuk memasukkan nomor faks, lalu tekan tombol **OK**.
10. Gunakan keypad untuk memasukkan nama atau kop perusahaan Anda, lalu tekan tombol **OK**.

CATATAN: Jumlah maksimal karakter untuk nomor faks adalah 20.

CATATAN: Jumlah maksimal karakter untuk kepala faks adalah 40.

Selengkapnya!

Untuk informasi selengkapnya tentang cara lain mengirim faks, misalnya menjadwalkan faks untuk dikirim nanti atau mengirim faks dari komputer, lihat Panduan Pengguna di CD printer atau kunjungi: www.hp.com/support/ljm178MFP

9. Menggunakan fitur pindai

Gunakan perangkat lunak HP Scan di komputer untuk memulai tugas pindai pada printer.

Windows

Buka **HP Printer Assistant**, pilih **Scan** (Pindai), lalu pilih **Scan a Document or Photo** (Pindai Dokumen atau Foto).

OS X

Buka folder **Applications** (Aplikasi) dan buka **HP Easy Scan**.

Mengatasi masalah

Panduan pengguna

Panduan pengguna mencakup informasi tentang penggunaan printer dan mengatasi masalah. Panduan pengguna tersedia pada CD printer dan web:

1. Kunjungi www.hp.com/support/ljM178MFP
2. Pilih printer jika diminta, lalu klik **User Guides** (Panduan Pengguna).

Memeriksa pembaruan firmware

1. Kunjungi www.hp.com/support/ljM178MFP
2. Pilih printer jika diminta, lalu klik **Software and Drivers** (Perangkat Lunak dan Driver).
3. Pilih sistem operasi, lalu klik tombol **Next** (Berikutnya).
4. Pilih **Firmware**, lalu klik tombol **Download**.

Mengatasi pesan kode kesalahan (panel kontrol LED)

Kode Kesalahan	Tindakan
ER 01	Memasukkan kertas
ER 02	Tutup pintu depan
ER 04, ER 05, ER 06	Mengatasi kertas yang macet
ER 27	Mengeluarkan kelebihan kertas dari Baki 1

Sumber dukungan tambahan

Untuk bantuan secara menyeluruh dari HP terkait printer, kunjungi: www.hp.com/support/ljM178MFP

- Mengatasi masalah
- Menemukan petunjuk konfigurasi tingkat lanjut
- Men-download pembaruan perangkat lunak
- Bergabung dengan forum dukungan
- Mencari informasi jaminan dan peraturan
- Mengakses sumber pencetakan seluler

Sambungan jaringan berkabel (Ethernet) (opsional)

- Pastikan printer telah tersambung ke port jaringan yang benar menggunakan kabel dengan panjang yang benar.
- Pastikan lampu di sebelah port jaringan telah menyala.
- Pastikan driver cetak telah terinstal di komputer.
- Uji sambungan jaringan dengan melakukan ping jaringan:

Windows

Klik **Start** (Mulai) > **Run** (Jalankan). Ketik **cmd**, lalu tekan **Enter**. Ketik **ping**, ketik spasi, ketik alamat IP printer, lalu tekan **Enter**. **Contoh alamat IP:** 192.168.0.1. Untuk menemukan IP printer, lihat "Menemukan alamat IP printer".

OS X

Buka **Network Utility** (Utilitas Jaringan), lalu ketik alamat IP di jendela **ping**. Tekan **Enter**. **Contoh alamat IP:** 192.168.0.1. Untuk menemukan IP printer, lihat "Menemukan alamat IP printer".



- Jika jendela menampilkan waktu respons (round-trip time), berarti jaringan berfungsi.
- Jika ping tidak berjalan, coba hidupkan ulang printer, lalu periksa kembali semua langkah sambungan.

Sambungan jaringan nirkabel (model nirkabel)

- Pastikan kabel jaringan tidak tersambung. Printer tidak dapat tersambung ke jaringan nirkabel jika kabel jaringan tersambung.
- Pastikan printer dan router nirkabel telah diaktifkan dan memiliki daya. Pastikan juga sakelar nirkabel telah diaktifkan.
- Pastikan printer telah berada dalam jangkauan jaringan nirkabel. Untuk sebagian besar jaringan, printer harus berada dalam jarak 30 m (100 kaki) dari jalur akses nirkabel (router nirkabel).
- Pastikan driver cetak telah terinstal di komputer.
- Pastikan komputer dan printer telah tersambung ke jaringan nirkabel yang sama.
- Untuk Mac, pastikan router nirkabel mendukung Bonjour.
- Hidupkan ulang router nirkabel.

Cara mengatasi masalah faks (hanya model faks)

Memastikan sambungan fisik

- Pastikan kabel telepon telah tersambung ke port faks  di bagian belakang printer dan ke stopkontak.
- Untuk telepon ekstensi atau perangkat tambahan lain, pastikan kabel telepon telah tersambung ke port telepon  di bagian belakang printer dan ke perangkat.
- Jika panggilan telepon keluar gagal karena nada panggil tidak terdeteksi atau saluran sibuk, sambungkan ke saluran telepon lainnya.
- Untuk layanan Fax over IP (Faks melalui IP), kurangi **Fax Speed** (Kecepatan Faks), lalu nonaktifkan **Error Correction Mode** (Mode Koreksi Kesalahan) dari menu **Fax Settings** (Pengaturan Faks) di panel kontrol printer.

Memastikan pengaturan faks printer

- Untuk menggunakan layanan pesan suara dari perusahaan atau penyedia layanan telepon, pastikan pengaturan **Rings to Answer** (Dering ke Jawab) printer diatur ke lebih rendah daripada mesin penjawab telepon.
- Jika beberapa nomor telepon ditetapkan pada saluran telepon fisik yang sama dan saluran dibagi oleh beberapa perangkat, pastikan printer telah diatur ke pengaturan dering khusus yang benar. Gunakan pengaturan agar printer menjawab faks dan mengabaikan jenis dering lainnya.
- Mengkonfigurasi pengaturan Fax Speed (Kecepatan Faks) ke **Medium(V.17)** (Sedang(V.17)) atau **Slow(V.29)** (Lambat(V.29)) juga dapat meningkatkan kemampuan pengiriman faks.



Color LaserJet Pro MFP M178-M181 시작 설명서

English.....1

Bahasa Indonesia.....5

한국어9

ไทย 13

繁體中文..... 17

Tiếng Việt..... 21

www.hp.com/support/ljM178MFP

www.register.hp.com

! 중요:

프린터 하드웨어 설치 포스터의 **1~2단계**를 수행한 다음 **3단계**를 진행하십시오.



3. 제어판에서 초기 설정

소프트웨어를 설치하기 전에 프린터 제어판에서 디스플레이 상태를 점검합니다.

4. 연결 방식 선택

프린터와 컴퓨터 간 직접 USB 연결 A-B형 USB 케이블을 사용합니다.

Windows

1. 소프트웨어를 설치하기 전에 USB 케이블을 연결하지 마십시오. 설치 과정 중에 케이블을 연결하라는 메시지가 표시됩니다. 케이블이 이미 연결된 경우, 설치 중 케이블을 연결하라는 메시지가 표시되면 프린터를 재시작합니다.
2. “5. 소프트웨어 다운로드 및 설치”로 진행합니다.

OS X

1. OS X의 경우, 소프트웨어를 설치하기 전에 USB 케이블을 컴퓨터와 프린터에 연결합니다.
2. “5. 소프트웨어 다운로드 및 설치”로 진행합니다.

유선 이더넷 네트워크 연결 (선택 사항) 표준 네트워크 케이블을 사용합니다.

1. 네트워크 케이블을 프린터와 네트워크에 연결합니다. 프린터에서 네트워크 주소를 받을 때까지 몇 분 대기합니다.
2. “5. 소프트웨어 다운로드 및 설치”로 진행합니다.

무선 네트워크 연결(무선 모델만 해당) 2줄 제어판

1. 프린터를 무선(Wi-Fi) 네트워크에 연결하려면 프린터, 액세스 지점 및 컴퓨터가 켜져 있어야 하며 컴퓨터가 무선 네트워크에 연결되어 있어야 합니다.
2. 소프트웨어 설치 도중 USB 케이블이 필요할 수 있습니다.
3. 컴퓨터에서 인쇄하려면 “5. 소프트웨어 다운로드 및 설치”로 이동하십시오. 휴대전화나 태블릿에서만 인쇄하려면 “6. 모바일 인쇄 (선택 사항)”를 진행합니다.

IP 주소 수동으로 구성

수동으로 IP 주소를 구성하는 방법에 대한 자세한 내용은 프린터 사용 설명서 (www.hp.com/support/ljM178MFP)를 참조하십시오.

5. 소프트웨어 다운로드 및 설치

방법 1: HP Easy Start 다운로드(Windows 및 OS X)

1. 123.hp.com/laserjet으로 이동한 다음 **다운로드**를 클릭합니다.
2. 화면에 표시되는 안내와 알림에 따라 컴퓨터에 파일을 저장합니다.
3. 파일이 저장된 폴더에서 소프트웨어 파일을 실행합니다.

방법 2: 프린터 지원 웹사이트에서 다운로드(Windows 및 OS X)

1. www.hp.com/support/ijM178MFP로 이동합니다.
2. **소프트웨어 및 드라이버**를 선택합니다.
3. 해당 프린터 모델 및 운영 체제용 소프트웨어를 다운로드합니다.
4. 파일이 저장된 폴더에서 소프트웨어 파일을 실행합니다.

방법 3: 프린터 CD에서 설치(Windows만 해당)

1. 컴퓨터에 프린터 CD를 넣습니다.
2. 화면의 지시에 따라 소프트웨어를 설치합니다.

설치 노트

프린터용 소프트웨어에 대한 자세한 내용은 프린터 CD의 설치 노트 파일을 참조하십시오.

HP용 Readiris Pro

Readiris Pro를 통해 HP 제품의 고급 OCR 및 스캔 기능을 사용할 수 있습니다. 인쇄된 문서를 편집 및 검색이 가능하고 저장 및 공유할 수 있는 PDF 파일로 간편하게 변환하십시오. 웹에서 소프트웨어를 다운로드하려면 다음으로 이동합니다. www.hp.com/support/ijM178MFP

드라이버를 선택하고 적절한 운영 체제를 선택한 후 다음을 클릭합니다. **응용프로그램** - 타사를 클릭한 다음 **다운로드** 버튼을 클릭합니다.

6. 모바일 인쇄(선택 사항)

6.1 무선 네트워크에 장치 연결

핸드폰 또는 태블릿에서 인쇄하려면 해당 장치를 프린터와 동일한 무선 네트워크에 연결합니다.

Apple iOS 장치(AirPrint): 인쇄할 항목을 열고 작업 아이콘을 선택합니다. **인쇄**를 선택하고 프린터를 선택한 다음 **인쇄**를 선택합니다.

Android 장치(4.4 이상): 인쇄할 항목을 열고 **메뉴** 버튼을 선택합니다. **인쇄**를 선택하고 프린터를 선택한 다음 **인쇄**를 선택합니다.

일부 장치의 경우 Google Play 스토어에서 HP 인쇄 서비스 플러그인 앱을 다운로드해야 합니다.

Windows Phone: Windows 스토어에서 HP AiO Remote 앱을 다운로드합니다.

모바일 인쇄에 대해 자세히 알아보기

이들 운영 체제 및 기타 운영 체제(Chrome/Google Cloud Print)에 대한 추가 정보는 www.hp.com/go/LaserJetMobilePrinting으로 이동하거나 QR 코드를 스캔하십시오.



6.2 Wi-Fi Direct(무선 모델만 해당)

Wi-Fi Direct를 통해 스마트폰, 태블릿, 컴퓨터와 같은 Wi-Fi 케이블 장치를 무선 라우터나 액세스 지점을 사용하지 않고 직접 프린터에 무선 네트워크 연결을 할 수 있습니다. Wi-Fi를 사용할 수 있는 장치를 새 무선 네트워크 또는 핫스팟에 연결하는 방식과 동일한 방법으로 프린터의 Wi-Fi Direct 신호에 연결합니다.

Wi-Fi Direct 활성화

다음 단계를 수행하여 HP 내장 웹 서버(EWS)에서 Wi-Fi Direct를 활성화합니다.

1. 프린터 제어판에서 설정 버튼을 누른 다음 **네트워크 설정** 메뉴를 엽니다.
2. 다음 메뉴를 엽니다.
 - Wi-Fi Direct
 - 켜기/끄기
3. **켜기** 메뉴 항목을 선택합니다. Wi-Fi Direct 인쇄를 비활성화하려면 **끄기** 버튼을 선택합니다.

무선 인쇄 및 무선 설정에 대한 자세한 내용은 www.hp.com/go/wirelessprinting에서 확인하십시오.

프린터 찾기

1. 모바일 장치에서 Wi-Fi를 켜고 무선 네트워크를 검색합니다.
2. 프린터 제어판에 표시되는 프린터를 선택합니다.
프린터 이름 예: Direct-bb-HP M277 Laserjet

7. 이메일을 통한 HP ePrint 설정(선택 사항)

이메일을 통한 HP ePrint를 사용하면 장치가 동일한 네트워크 상에 없어도 이메일을 사용할 수 있는 모든 장치에서 프린터의 이메일 주소로 문서를 첨부 파일로 전송하여 인쇄할 수 있습니다.

이메일을 통한 HP ePrint를 사용하려면 프린터가 다음 요구 사항을 충족해야 합니다.

- 프린터가 유선 또는 무선 네트워크에 연결되어 있고 인터넷에 접속되어야 합니다.
- 프린터에 HP 웹 서비스가 활성화되어 있어야 하며, HP Connected에 프린터가 등록되어 있어야 합니다.

HP 웹 서비스 활성화(무선 모델만 해당)

1. 프린터가 네트워크에 연결된 후에 구성 페이지를 인쇄하고 프린터 IP 주소를 식별합니다.
2. 컴퓨터에서 웹 브라우저를 열고 주소줄에 프린터 IP 주소를 입력합니다. HP Embedded Web Server(EWS)가 열립니다.
3. **HP 웹 서비스** 탭을 선택한 다음 **사용** 버튼을 클릭합니다. 프린터가 인터넷에 대한 연결을 구성하며 정보 시트가 인쇄될 것이라는 메시지를 표시합니다.
4. **확인** 버튼을 클릭합니다. ePrint 페이지가 인쇄됩니다. ePrint 페이지에서 프린터에 자동으로 할당된 이메일 주소를 찾습니다.

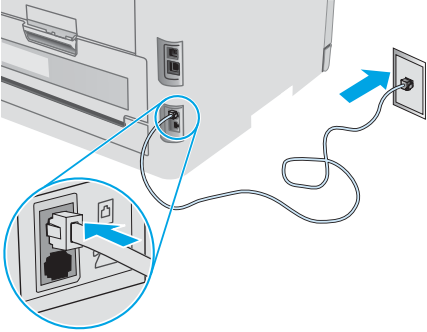
8. 팩스 설정 (팩스 모델만 해당 - 선택 사항)

8.1 프린터 연결

이 프린터는 아날로그 장치입니다. HP는 전용 아날로그 전화선에서 이 프린터를 사용하는 것이 좋습니다.

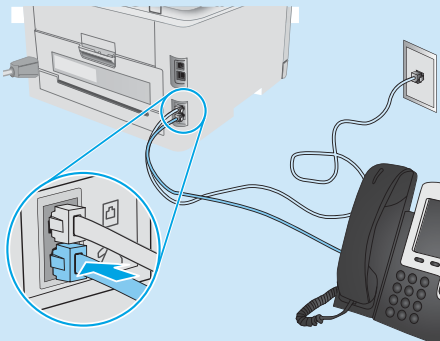
참고: 일부 국가/지역에서는 프린터와 함께 제공된 전화 코드에 대한 어댑터가 필요할 수 있습니다.

프린터와 함께 제공된 전화 코드를 프린터의 팩스 포트와 벽면의 전화 잭에 연결합니다.



① 자동 응답기나 내선 전화는 어떻게 연결하나요?

1. 전화 포트에서 플러그를 제거합니다.
2. 전화 잭에서 자동 응답기 전화 코드를 분리한 다음 프린터의 전화 포트에 연결합니다.
3. 프린터와 함께 제공된 전화 코드를 프린터의 팩스 포트와 벽면의 전화 잭에 연결합니다.



① 디지털 전화기 환경에서는 HP 프린터를 어떻게 설정하나요?

HP 프린터는 기존 아날로그 전화 서비스와 함께 사용할 수 있도록 개발되었습니다. 디지털 전화기 환경(예: DSL/ADSL, PBX, ISDN, 또는 FoIP 등)의 경우 팩스용 프린터를 설치할 때 디지털-아날로그 필터 또는 변환기가 필요할 수 있습니다.

참고: 통신 업체에 따라 프린터가 모든 디지털 서비스 회선이나 제공 업체, 모든 디지털 환경 또는 모든 디지털-아날로그 변환기와 호환되지 않을 수 있습니다. 가장 적합한 설치 옵션을 확인하려면 통신 업체에 문의하십시오.

참고: 내선 및 외선 통화에 대해 다른 벨소리 종류를 가진 PBX 전화 시스템에 벨소리 종류 감지 기능을 설정할 때 외부 번호를 사용하여 프린터 팩스 번호로 전화를 걸어 벨소리 종류를 기록하십시오.

8.2 프린터 구성

팩스 기능을 사용하려면 팩스 시간, 날짜 및 머리글 설정을 구성해야 합니다.

HP 팩스 설정 마법사(Windows)

1. HP 프린터 길잡이를 엽니다.
 - **Windows 10:** 시작 메뉴에서 **모든 앱**을 클릭하고 **HP**를 클릭한 다음 프린터 이름을 선택합니다.
 - **Windows 8.1:** 시작 화면의 왼쪽 하단에 있는 아래쪽 화살표를 클릭한 다음 프린터 이름을 선택합니다.
 - **Windows 8:** 시작 화면의 빈 공간을 마우스 오른쪽 버튼으로 클릭하고 앱 표시줄에서 모든 앱을 클릭한 다음 프린터 이름을 선택합니다.
 - **Windows 7, Windows Vista 및 Windows XP:** 컴퓨터 바탕 화면에서 시작을 클릭하여 모든 프로그램을 선택한 뒤 HP, 해당 프린터 폴더를 차례대로 클릭하고 프린터 이름이 있는 아이콘을 선택하여 **HP 프린터 길잡이**를 엽니다.
2. HP 프린터 길잡이에서 **팩스**를 누른 다음 **팩스 설정 마법사**를 선택합니다.
3. 화면의 지침을 따라 팩스 설정을 구성합니다.

기본 설정 메뉴

1. 프린터 제어판에서 설정 버튼을 누릅니다.
2. **시스템 설정, 시간/날짜**를 차례로 선택합니다.
3. **시간/날짜**를 선택합니다.
4. **12시간** 또는 **24시간** 형식을 선택합니다.
5. 키패드를 사용하여 현재 시간을 입력한 다음 **확인** 버튼을 누릅니다.
6. 날짜 형식을 선택합니다.
7. 키패드를 사용하여 현재 날짜를 입력한 다음 **확인** 버튼을 누릅니다.
8. **설정** 메뉴에서 **팩스 설정**을 선택한 다음 **팩스 머리글**을 선택합니다.
9. 키패드를 사용하여 팩스 번호를 입력한 다음 **확인** 버튼을 누릅니다.
참고: 팩스 번호로 최대 20자를 사용할 수 있습니다.
10. 키패드를 사용하여 회사 이름이나 머리글을 입력한 다음 **확인** 버튼을 누릅니다.
참고: 팩스 머리글로 최대 40자를 사용할 수 있습니다.

① 자세히 알아보기!

나중에 보내도록 팩스를 예약하거나 컴퓨터에서 팩스 전송 등 팩스를 보내는 다양한 방법에 대한 자세한 내용은 프린터 CD에 있는 사용 설명서를 참조하거나 다음으로 이동하십시오.

www.hp.com/support/ljM178MF

9. 스캔 기능 사용

프린터에서 스캔 작업을 시작하려면 컴퓨터의 HP Scan 소프트웨어를 사용하십시오.

Windows

HP 프린터 길잡이에서 스캔을 선택한 다음 문서 또는 사진 스캔을 선택합니다.

OS X

Applications 폴더로 이동한 다음 HP Easy Scan을 엽니다.

문제 해결

사용 설명서

사용 설명서에 프린터 사용법 및 문제 해결 정보가 포함되어 있습니다. 프린터 CD 및 웹에서 제공됩니다.

1. www.hp.com/support/ijM178MFP로 이동합니다.
2. 메시지가 표시되면 프린터를 선택하고 **사용 설명서**를 클릭합니다.

펌웨어 업데이트 확인

1. www.hp.com/support/ijM178MFP로 이동합니다.
2. 메시지가 표시되면 프린터를 선택하고 **소프트웨어 및 드라이버**를 클릭합니다.
3. 운영 체제를 선택하고 **다음** 버튼을 클릭합니다.
4. **펌웨어**를 선택하고 **다운로드** 버튼을 클릭합니다.

오류 코드 메시지 해결 (LED 제어판)

오류 코드	작업
ER 01	용지 넣기
ER 02	전면 도어 닫기
ER 04, ER 05, ER 06	용지 걸림 제거
ER 27	용지함 1에서 초과 용지 제거

추가 지원 리소스

해당 프린터에 대한 HP 전체 도움말은 다음으로 이동하십시오.
www.hp.com/support/ijM178MFP

- 문제 해결
- 고급 구성 지침 찾기
- 소프트웨어 업데이트 다운로드
- 지원 포럼 가입
- 보증 및 규정 정보 찾기
- 모바일 인쇄 리소스 액세스

유선 (이더넷) 네트워크 연결 (선택 사항)

- 프린터가 올바른 길이의 케이블을 사용하여 올바른 네트워크 포트에 연결되어 있는지 확인합니다.
- 네트워크 포트 옆에 있는 표시등이 켜져 있는지 확인합니다.
- 프린터 드라이버가 컴퓨터에 설치되어 있는지 확인합니다.
- 네트워크에 ping을 수행하여 네트워크 통신을 테스트합니다.

Windows

시작 > 실행을 클릭합니다. **cmd**를 입력하고 **Enter**를 누릅니다. **ping**, **공백**, 프린터 IP 주소를 차례로 입력한 다음 **Enter**를 누릅니다. **IP 주소 예:** 192.168.0.1. 프린터 IP를 찾으려면 "프린터 IP 주소 찾기"를 참조하십시오.

OS X

네트워크 유틸리티를 열고 **ping** 창에 IP 주소를 입력합니다. **Enter**를 누릅니다. **IP 주소 예:** 192.168.0.1. 프린터 IP를 찾으려면 "프린터 IP 주소 찾기"를 참조하십시오.

- 창에 왕복 시간이 표시되면 네트워크가 작동 중입니다.
- ping이 작동하지 않는 경우, 프린터를 재시작하고 모든 연결 단계를 다시 확인합니다.

무선 네트워크 연결(무선 모델)

- 네트워크 케이블이 연결되어 있지 않은지 확인합니다. 네트워크 케이블이 연결되어 있는 경우 프린터가 무선 네트워크에 연결할 수 없습니다.
- 프린터 및 무선 라우터가 켜져 있고 전원에 이상이 없는지 확인합니다. 무선 스위치가 켜져 있는지도 확인합니다.
- 프린터가 무선 네트워크 범위 내에 있는지 확인합니다. 대부분의 네트워크에서는 프린터가 무선 액세스 지점(무선 라우터)의 30m (100ft) 이내에 있어야 합니다.
- 프린터 드라이버가 컴퓨터에 설치되어 있는지 확인합니다.
- 컴퓨터 및 프린터가 동일한 무선 네트워크에 연결되어 있는지 확인합니다.
- Mac의 경우 무선 라우터에서 Bonjour를 지원하는지 확인합니다.
- 무선 라우터를 재시작합니다.

팩스 문제 해결 (팩스 모델만 해당)

물리적 연결 확인

- 전화 코드가 프린터 뒷면의 팩스 포트와 벽면 전화 잭에 연결되어 있는지 확인합니다.
- 내선 전화 또는 기타 추가 장치의 경우 전화 코드가 프린터 뒷면의 전화 포트와 장치에 연결되어 있는지 확인합니다.
- 발신음이 검출되지 않거나 통화 중이어서 전화 발신에 실패하는 경우 다른 전화선에 연결합니다.
- IP 서비스를 통한 팩스의 경우, **팩스 속도**를 줄이고 프린터 제어판의 **팩스 설정** 메뉴에서 **오류 수정 모드**를 끕니다.

프린터 팩스 설정 확인

- 통신 업체 또는 서비스 공급자의 음성 메일 서비스를 사용하려면 프린터의 **Rings to Answer**(전화벨 횟수) 설정이 전화 자동 응답 장치보다 적게 설정되어 있는지 확인합니다.
- 여러 전화 번호가 동일한 물리적 전화 회선에 할당되고 회선을 여러 장치에서 공유하는 경우, 프린터가 올바른 벨소리 구별 설정으로 설정되어 있는지 확인합니다. 프린터가 팩스에 응답하고 다른 발신음 유형은 무시하는 설정을 사용합니다.
- 팩스 속도 설정을 **중간(V.17)** 또는 **느림(V.29)**으로 구성하면 팩스 전송 성능을 향상시킬 수 있습니다.



คู่มือเริ่มต้นใช้งาน Color LaserJet Pro MFP M178-M181

English.....1

Bahasa Indonesia.....5

한국어.....9

ไทย.....13

繁體中文.....17

Tiếng Việt.....21



www.hp.com/support/ljM178MFP



www.register.hp.com

! สิ่งสำคัญ:

ดำเนินการตาม **ขั้นตอนที่ 1 - 2**
บนโปสเตอร์การตั้งค่าฮาร์ดแวร์
เครื่องพิมพ์ก่อน แล้วจึง
ดำเนินการต่อที่ **ขั้นตอนที่ 3**



3. การตั้งค่าครั้งแรกบนแผงควบคุม

ให้ตรวจสอบสถานะหน้าจอบนแผงควบคุมเครื่องพิมพ์ ก่อนที่จะเริ่มการติดตั้งซอฟต์แวร์

4. เลือกวิธีการเชื่อมต่อ

การเชื่อมต่อ USB ระหว่างเครื่องพิมพ์และคอมพิวเตอร์โดยตรง
ใช้สาย USB แบบ A-to-B

Windows

1. ห้ามเชื่อมต่อสาย USB ก่อนที่จะติดตั้งซอฟต์แวร์ โดยขั้นตอนการติดตั้งจะพร้อมดี ให้เชื่อมต่อสายในเวลาที่เหมาะสม หากมีการเชื่อมต่อสายอยู่แล้ว ให้รีสตาร์ทเครื่องพิมพ์ เมื่อถึงขั้นตอนที่การติดตั้งพร้อมดี ให้เชื่อมต่อสาย
2. ดำเนินการต่อที่ **“5. ดาว์นโหลดและติดตั้งซอฟต์แวร์”**

OS X

1. สำหรับ OS X ให้เชื่อมต่อสาย USB ระหว่างคอมพิวเตอร์และเครื่องพิมพ์ ก่อนที่จะติดตั้งซอฟต์แวร์
2. ดำเนินการต่อที่ **“5. ดาว์นโหลดและติดตั้งซอฟต์แวร์”**

การเชื่อมต่อเครือข่ายอีเทอร์เน็ตแบบใช้สาย (ไม่จำเป็น)

ใช้สายเครือข่ายมาตรฐาน

1. เชื่อมต่อสายเครือข่ายเข้ากับเครื่องพิมพ์และเข้ากับเครือข่าย รอสองสามนาที เพื่อให้เครื่องพิมพ์รับแอดเดรสเครือข่าย
2. ดำเนินการต่อที่ **“5. ดาว์นโหลดและติดตั้งซอฟต์แวร์”**

การเชื่อมต่อเครือข่ายไร้สาย (รุ่นไร้สายเท่านั้น)

แผงควบคุมแบบ 2 บรรทัด

1. ในการเชื่อมต่อเครื่องพิมพ์เข้ากับเครือข่ายไร้สาย (Wi-Fi) โปรดตรวจสอบให้แน่ใจว่าเครื่องพิมพ์ จุดเข้าใช้งาน และคอมพิวเตอร์เปิดอยู่ และคอมพิวเตอร์นั้นเชื่อมต่อกับเครือข่ายไร้สายแล้ว
2. อาจต้องใช้สาย USB ในระหว่างที่ติดตั้งซอฟต์แวร์
3. ในการพิมพ์จากคอมพิวเตอร์ให้ดำเนินการต่อที่ **“5. ดาว์นโหลดและติดตั้งซอฟต์แวร์”** ในการพิมพ์จากโทรศัพท์หรือแท็บเล็ตเท่านั้น ให้ดำเนินการต่อที่ **“6. การพิมพ์ผ่านอุปกรณ์เคลื่อนที่ และพิมพ์ไร้สาย (ไม่จำเป็น)”**

การกำหนดค่า IP แอดเดรสด้วยตนเอง

โปรดดูคู่มือการใช้งานเครื่องพิมพ์สำหรับข้อมูลเกี่ยวกับวิธีการกำหนดค่า IP ด้วยตนเอง
www.hp.com/support/ljM178MFP

5. ดาว์นโหลดและติดตั้งซอฟต์แวร์

วิธีที่ 1: ดาว์นโหลด HP Easy Start (Windows และ OS X)

1. ไปที่ 123.hp.com/laserjet และคลิก **Download** (ดาว์นโหลด)
2. ทำตามคำแนะนำบนหน้าจอและพร้อมท์ เพื่อบันทึกไฟล์ในคอมพิวเตอร์
3. เปิดไฟล์ซอฟต์แวร์จากโฟลเดอร์ที่บันทึกไฟล์ไว้

วิธีที่ 2: ดาว์นโหลดจากเว็บไซต์การสนับสนุนเครื่องพิมพ์ (Windows และ OS X)

1. ไปที่ www.hp.com/support/ljm178MFP
2. เลือก **Software and drivers** (ซอฟต์แวร์และไดรเวอร์)
3. ดาว์นโหลดซอฟต์แวร์สำหรับรุ่นเครื่องพิมพ์และระบบปฏิบัติการของคุณ
4. เปิดไฟล์ซอฟต์แวร์จากโฟลเดอร์ที่บันทึกไฟล์ไว้

วิธีที่ 3: ติดตั้งจากแผ่นซีดีเครื่องพิมพ์ (Windows เท่านั้น)

1. ใส่แผ่นซีดีเครื่องพิมพ์เข้าไปในคอมพิวเตอร์
2. ทำตามคำแนะนำบนหน้าจอ เพื่อติดตั้งซอฟต์แวร์

หมายเหตุการติดตั้ง

สำหรับรายละเอียดเพิ่มเติมเกี่ยวกับซอฟต์แวร์สำหรับเครื่องพิมพ์ โปรดดูไฟล์หมายเหตุการติดตั้งในแผ่นซีดีเครื่องพิมพ์

Readiris Pro สำหรับ HP

Readiris Pro ช่วยให้เครื่องพิมพ์ HP ของคุณมีคุณสมบัติการรู้จำอักขระด้วยแสง (OCR) และคุณสมบัติการสแกนขั้นสูง โดยคุณสามารถแปลงเอกสารกระดาษของคุณให้กลายเป็นไฟล์ PDF ที่แก้ไขและค้นหาได้ พร้อมสำหรับการจัดเก็บและการแชร์กับผู้อื่น ในการดาว์นโหลดซอฟต์แวร์จากเว็บ ให้ไปที่: www.hp.com/support/ljm178MFP เลือก **Drivers** (ไดรเวอร์) และเลือกระบบปฏิบัติการที่เหมาะสม แล้วคลิก **Next** (ถัดไป) คลิก **Application - 3rd Party** (แอปพลิเคชันของบริษัทอื่น) แล้วคลิกปุ่ม **Download** (ดาว์นโหลด)

6. การตั้งค่าการพิมพ์ผ่านอุปกรณ์เคลื่อนที่ (ไม่จำเป็น)

6.1 เชื่อมต่ออุปกรณ์กับเครือข่ายไร้สาย

ในการพิมพ์จากโทรศัพท์หรือแท็บเล็ต ให้เชื่อมต่ออุปกรณ์กับเครือข่ายไร้สายเดียวกันกับเครื่องพิมพ์

อุปกรณ์ Apple iOS (AirPrint): เปิดรายการที่จะพิมพ์ จากนั้นเลือกไอคอน Action (ดำเนินการ) เลือก **พิมพ์** เลือกเครื่องพิมพ์ จากนั้นเลือก **พิมพ์**

อุปกรณ์ Android (4.4 หรือใหม่กว่า): เปิดเอกสารที่จะพิมพ์และเลือกปุ่ม **เมนู** เลือก **พิมพ์** เลือกเครื่องพิมพ์ จากนั้นเลือก **พิมพ์**

อุปกรณ์บางชนิดกำหนดให้ต้องมีการดาว์นโหลดแอปเสริมอย่าง HP Print Service (บริการการพิมพ์ของ HP) จาก Google Play Store

โทรศัพท์ Windows: ดาว์นโหลดแอป HP AiO Remote จาก Windows Store

6.2 Wi-Fi Direct (รุ่นไร้สายเท่านั้น)

Wi-Fi Direct อนุญาตให้อุปกรณ์ที่ใช้งาน Wi-Fi ได้ อาทิเช่น สมาร์ทโฟน แท็บเล็ต หรือคอมพิวเตอร์ เชื่อมต่อกับเครื่องพิมพ์ผ่านเครือข่ายไร้สายได้โดยตรง โดยไม่ต้องใช้เราเตอร์หรือจุดเข้าใช้งานไร้สาย โดยวิธีการเชื่อมต่อกับสัญญาณ Wi-Fi Direct ของเครื่องพิมพ์ จะเหมือนกับวิธีการเชื่อมต่ออุปกรณ์ที่ใช้ Wi-Fi ได้กับเครือข่ายไร้สายหรือฮอตสปอตใหม่ทั่วไป

เปิดใช้งาน Wi-Fi Direct

เปิดใช้งาน Wi-Fi Direct ใน HP Embedded Web Server (EWS) โดยดำเนินการตามขั้นตอนดังต่อไปนี้

1. บนแผงควบคุมเครื่องพิมพ์ให้กดปุ่มการตั้งค่า แล้วเปิดเมนู **การตั้งค่าเครือข่าย**
 - **Wi-Fi Direct**
 - **เปิด/ปิด**
3. เลือกรายการเมนู **เปิด** ส่วนการเลือกปุ่ม **ปิด** จะปิดการใช้งานพิมพ์ผ่าน Wi-Fi Direct

สำหรับข้อมูลเพิ่มเติมเกี่ยวกับการพิมพ์แบบไร้สายและการตั้งค่าระบบไร้สาย ให้ไปที่ www.hp.com/go/wirelessprinting

ค้นหาเครื่องพิมพ์

1. เปิด Wi-Fi ในอุปกรณ์เคลื่อนที่และค้นหาเครือข่ายไร้สาย
2. เลือกเครื่องพิมพ์ตามที่แสดงบนแผงควบคุมเครื่องพิมพ์ ตัวอย่างชื่อเครื่องพิมพ์ เช่น Direct-bb-HP M277 Laserjet

ศึกษาเพิ่มเติมเกี่ยวกับการพิมพ์ผ่านอุปกรณ์เคลื่อนที่

หากต้องการข้อมูลเพิ่มเติมเกี่ยวกับการพิมพ์ผ่านอุปกรณ์เคลื่อนที่และระบบปฏิบัติการอื่นๆ (Chrome/Google Cloud Print) ให้ไปที่ www.hp.com/go/laserjetmobileprinting หรือสแกนรหัส QR นี้



7. ตั้งค่า HP ePrint ผ่านอีเมล (ไม่จำเป็น)

ใช้ HP ePrint ผ่านอีเมล เพื่อพิมพ์เอกสาร โดยส่งเอกสารที่จะพิมพ์เป็นไฟล์แนบอีเมลไปยังอีเมลแอดเดรสของเครื่องพิมพ์ จากอุปกรณ์ใดก็ได้ที่เปิดใช้อีเมล แม้ว่าอุปกรณ์นั้นจะไม่ได้อยู่ในเครือข่ายเดียวกันก็ตาม

ในการใช้ HP ePrint ผ่านอีเมล เครื่องพิมพ์จะต้องมีคุณสมบัติตามข้อกำหนดดังต่อไปนี้

- เครื่องพิมพ์ต้องเชื่อมต่อกับเครือข่ายแบบไร้สายหรือสาย และเชื่อมต่อกับอินเทอร์เน็ตได้
- ต้องมีการเปิดใช้งาน HP Web Services บนเครื่องพิมพ์ และต้องมีการลงทะเบียนเครื่องพิมพ์กับ HP Connected

เปิดใช้งาน HP Web Services (รุ่นไร้สายเท่านั้น)

1. หลังจากเครื่องพิมพ์เชื่อมต่อกับเครือข่ายแล้ว ให้พิมพ์หน้าการกำหนดค่า และหา IP แอดเดรสของเครื่องพิมพ์
2. เปิดเว็บเบราว์เซอร์ที่คอมพิวเตอร์ของคุณ และป้อน IP แอดเดรสของเครื่องพิมพ์ในบรรทัดแอดเดรส HP Embedded Web Server (EWS) จะเปิดขึ้น
3. เลือกแท็บ **HP Web Services** และคลิกปุ่ม **Enable** (เปิดใช้งาน) เครื่องพิมพ์จะกำหนดค่าการเชื่อมต่อกับอินเทอร์เน็ต จากนั้นจะมีข้อความปรากฏขึ้นเพื่อแจ้งว่าจะพิมพ์เอกสารข้อมูล
4. คลิกปุ่ม **OK** หน้า ePrint จะพิมพ์ออกมาให้มองหอีเมลแอดเดรสที่มีกำหนดให้กับเครื่องพิมพ์ไว้แล้วโดยอัตโนมัติในหน้า ePrint นั้น

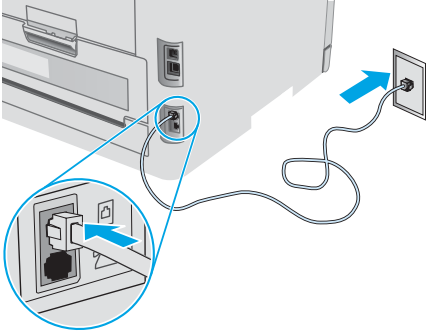
8. ตั้งค่าโทรสาร (รุ่นโทรสารเท่านั้น - ไม่จำเป็น)

8.1 เชื่อมต่อเครื่องพิมพ์

เครื่องพิมพ์นี้เป็นอุปกรณ์แบบอะนาล็อก HP จึงขอแนะนำให้คุณใช้เครื่องพิมพ์กับสายโทรศัพท์อะนาล็อกที่แยกเฉพาะ

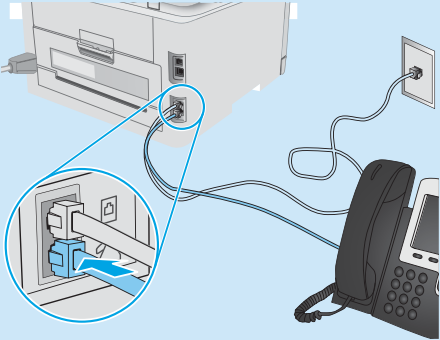
หมายเหตุ: ในบางประเทศ/พื้นที่อาจต้องใช้อะแดปเตอร์กับสายโทรศัพท์ที่มาพร้อมกับเครื่องพิมพ์

ต่อสายโทรศัพท์ที่มาพร้อมกับเครื่องพิมพ์เข้ากับพอร์ตโทรสาร บนเครื่องพิมพ์ และต่อเข้ากับแจ็คโทรศัพท์บนผนัง



ฉันจะเชื่อมต่อเครื่องตอบรับหรือโทรศัพท์ภายในได้อย่างไร

- ถอดที่อุดออกจากพอร์ตโทรศัพท์
- ถอดสายโทรศัพท์ของเครื่องตอบรับออกจากแจ็คโทรศัพท์ จากนั้นให้ต่อสายดังกล่าวเข้ากับพอร์ตโทรศัพท์ บนเครื่องพิมพ์
- ต่อสายโทรศัพท์ที่มาพร้อมกับเครื่องพิมพ์เข้ากับพอร์ตโทรสาร บนเครื่องพิมพ์ และต่อเข้ากับแจ็คโทรศัพท์บนผนัง



ฉันจะตั้งค่าเครื่องพิมพ์ HP ในสภาพแวดล้อมโทรศัพท์ดิจิทัลได้อย่างไร

เครื่องพิมพ์ HP ออกแบบมาสำหรับใช้กับระบบโทรศัพท์แบบอะนาล็อกแบบดั้งเดิมโดยเฉพาะ สำหรับสภาพแวดล้อมโทรศัพท์ดิจิทัล (เช่น DSL/ADSL, PBX, ISDN หรือ FoIP) อาจจำเป็นต้องใช้ตัวกรองสัญญาณหรือตัวแปลงสัญญาณดิจิทัลเป็นอะนาล็อก เมื่อมีการตั้งค่าเครื่องพิมพ์สำหรับเครื่องโทรสาร

หมายเหตุ: เครื่องพิมพ์อาจทำงานร่วมกับสายบริการหรือผู้ให้บริการดิจิทัลบางรายไม่ได้ หรืออาจทำงานในสภาพแวดล้อมดิจิทัลบางอย่างไม่ได้ หรืออาจทำงานร่วมกับตัวแปลงสัญญาณดิจิทัลเป็นอะนาล็อกบางตัวไม่ได้ ทั้งนี้ขึ้นอยู่กับบริษัทโทรศัพท์นั้นๆ ให้ติดต่อบริษัทโทรศัพท์ เพื่อกำหนดตัวเลือกการตั้งค่าที่ดีที่สุด

หมายเหตุ: เมื่อตั้งค่าการตรวจพบรูปแบบเสียงกริ่งในระบบโทรศัพท์ PBX ที่ใช้รูปแบบเสียงเรียกที่แตกต่างกันระหว่างโทรศัพท์ภายในและภายนอกในการบันทึกรูปแบบเสียงเรียก ให้ใช้หมายเลขโทรสารภายนอกเป็นหมายเลขหมุนโทรสารของเครื่องพิมพ์

8.2 กำหนดค่าเครื่องพิมพ์

การกำหนดค่าเวลา วันที่ และหัวเรื่องโทรสารที่จำเป็นต่อการใช้คุณสมบัติโทรสาร

วิธีการติดตั้งโทรสารของ HP (Windows)

- เปิด HP Printer Assistant
 - Windows 10:** จากเมนู เริ่ม ให้คลิก แอปทั้งหมด คลิก HP จากนั้นจึงเลือกชื่อเครื่องพิมพ์
 - Windows 8.1:** คลิกลูกศรลงในมุมซ้ายล่างของหน้าจอเริ่ม แล้วเลือกชื่อเครื่องพิมพ์
 - Windows 8:** คลิกขวาในพื้นที่ว่างบนหน้าจอเริ่ม คลิก แอปทั้งหมด บนแถบแอป แล้วเลือกชื่อเครื่องพิมพ์
 - Windows 7, Windows Vista และ Windows XP:** จากหน้าเดสก์ทอปของคอมพิวเตอร์ ให้คลิก เริ่ม เลือก โปรแกรมทั้งหมด คลิก HP และคลิกโฟลเดอร์สำหรับเครื่องพิมพ์ เลือกไอคอนที่มีชื่อเครื่องพิมพ์ จากนั้นเปิด HP Printer Assistant
- ใน HP Printer Assistant ให้เลือก โทรสาร จากนั้นเลือก วิธีการติดตั้งโทรสาร
- ดำเนินการตามคำแนะนำบนหน้าจอ เพื่อกำหนดค่าโทรสาร

เมนูการตั้งค่าพื้นฐาน

- บนแผงควบคุมเครื่องพิมพ์ให้กดปุ่มการตั้งค่า
- เลือก การตั้งค่าระบบ แล้วเลือก เวลา/วันที่
- เลือก เวลา/วันที่
- เลือก 12 ชั่วโมง หรือ 24 ชั่วโมง
- ใช้แผงปุ่มกดเพื่อป้อนเวลาปัจจุบัน แล้วกดปุ่ม OK
- เลือกรูปแบบวันที่
- ใช้แผงปุ่มกดเพื่อป้อนวันที่ปัจจุบัน แล้วกดปุ่ม OK
- จากเมนู การตั้งค่า ให้เลือก การติดตั้งโทรสาร จากนั้นเลือก หัวเรื่องโทรสาร
- ใช้แผงปุ่มกดเพื่อป้อนหมายเลขโทรสาร แล้วกดปุ่ม OK
หมายเหตุ: หมายเลขโทรสารมีจำนวนตัวอักษรสูงสุดได้ 20 ตัวอักษร
- ใช้แผงปุ่มกดเพื่อป้อนชื่อรับของคุณ หรือหัวเรื่องโทรสาร แล้วกดปุ่ม OK
หมายเหตุ: หัวเรื่องโทรสารมีจำนวนตัวอักษรสูงสุดได้ 40 ตัวอักษร

ศึกษาเพิ่มเติม!

สำหรับข้อมูลเพิ่มเติมเกี่ยวกับวิธีส่งโทรสารแบบอื่นๆ เช่น การกำหนดเวลาส่งโทรสารในภายหลัง หรือการส่งโทรสารจากคอมพิวเตอร์ โปรดดูคู่มือผู้ใช้ในแผ่นซีดีเครื่องพิมพ์ หรือไปที่: www.hp.com/support/ijm178MEP

9. ใช้คุณสมบัติการสแกน

ใช้ซอฟต์แวร์ HP Scan ในคอมพิวเตอร์ของคุณ เพื่อเริ่มงานสแกนที่เครื่องพิมพ์

Windows

เปิด HP Printer Assistant และเลือก Scan จากนั้นเลือก สแกนเอกสารหรือรูปภาพ

OS X

ไปที่โฟลเดอร์ แอปพลิเคชั่น และเปิด HP Easy Scan

การแก้ไขปัญหาเบื้องต้น

คู่มือผู้ใช้

คู่มือผู้ใช้จะมีข้อมูลการใช้เครื่องพิมพ์ และการแก้ไขปัญหาเบื้องต้น โดยคู่มือผู้ใช้ดังกล่าว จะรวบรวมไว้ในแผ่นซีดีเครื่องพิมพ์ และดาวน์โหลดได้จากเว็บไซต์ต่อไปนี้

1. ไปที่ www.hp.com/support/ijm178MFP
2. เลือกเครื่องพิมพ์หากมีการพร้อมตีให้เลือก จากนั้นคลิก **User Guides** (คู่มือผู้ใช้)

การตรวจสอบอัปเดตเฟิร์มแวร์

1. ไปที่ www.hp.com/support/ijm178MFP
2. เลือกเครื่องพิมพ์หากมีการพร้อมตีให้เลือก จากนั้นคลิก **Software and Drivers** (ซอฟต์แวร์และไดรเวอร์)
3. เลือกระบบปฏิบัติการ และคลิกปุ่ม **Next** (ถัดไป)
4. เลือก **Firmware** (เฟิร์มแวร์) แล้วคลิกปุ่ม **Download** (ดาวน์โหลด)

แก้ปัญหาของข้อความรหัสข้อผิดพลาด (แผงควบคุมแบบ LED)

รหัสข้อผิดพลาด	การดำเนินการ
ER 01	ใส่กระดาษ
ER 02	ปิดฝาด้านหน้า
ER 04, ER 05, ER 06	นำกระดาษที่ติดออก
ER 27	นำกระดาษที่เกินออกจากถาด 1

ทรัพยากรการสนับสนุนเพิ่มเติม

หากต้องการข้อมูลเพิ่มเติมเกี่ยวกับเครื่องพิมพ์ HP แบบครบถ้วนในทีเดียว ให้ไปที่ www.hp.com/support/ijm178MFP

- แก้ปัญหา
- ค้นหาคำแนะนำในการกำหนดค่าขั้นสูง
- ดาวน์โหลดอัปเดตซอฟต์แวร์
- เข้าร่วมฟอรัมการสนับสนุน
- ค้นหาข้อมูลการรับประกันและข้อบังคับ
- เข้าถึงทรัพยากรการพิมพ์ผ่านอุปกรณ์เคลื่อนที่

การเชื่อมต่อเครือข่ายแบบใช้สาย (อีเทอร์เน็ต) (ไม่จำเป็น)

- ตรวจสอบว่าเครื่องพิมพ์มีการเสียบเชื่อมกับพอร์ตเครือข่ายที่ถูกต้อง โดยใช้สายที่มีความยาวเหมาะสม
- ตรวจสอบว่าไฟตัดจากพอร์ตเครือข่ายเปิดอยู่
- ตรวจสอบว่าติดตั้งไดรเวอร์การพิมพ์บนคอมพิวเตอร์แล้ว
- ทดสอบการเชื่อมต่อเครือข่ายโดยการ Ping เครื่องพิมพ์ดังนี้

Windows

คลิก **เริ่ม** > **เรียกใช้** พิมพ์คำว่า **cmd** และกด **Enter** พิมพ์คำว่า **ping** เคาะวรรค แล้วพิมพ์ IP แอดเดรสของเครื่องพิมพ์ จากนั้นกด **Enter** ตัวอย่าง IP แอดเดรส เช่น 192.168.0.1 ในการค้นหา IP เครื่องพิมพ์ ให้ดูหัวข้อ "ค้นหา IP แอดเดรสเครื่องพิมพ์"

OS X

เปิดยูทิลิตี้เครือข่าย และพิมพ์ IP แอดเดรสในบานหน้าต่าง **ping** และกด **Enter** ตัวอย่าง IP แอดเดรส เช่น 192.168.0.1 ในการค้นหา IP เครื่องพิมพ์ ให้ดูหัวข้อ "ค้นหา IP แอดเดรสเครื่องพิมพ์"



- หากหน้าต่างแสดงเวลาในการติดต่อ แสดงว่าเครือข่ายใช้งานได้
- หาก Ping ไม่ทำงาน ให้ลองรีสตาร์ทเครื่องพิมพ์ และตรวจสอบขั้นตอนการเชื่อมต่อใหม่ทั้งหมด

(🔧) การเชื่อมต่อเครือข่ายไร้สาย (รุ่นไร้สายเท่านั้น)

- ตรวจสอบว่าไม่ได้เชื่อมต่อสายเครือข่ายไว้ เพราะเครื่องพิมพ์จะไม่สามารถเชื่อมต่อกับเครือข่ายไร้สาย เมื่อเชื่อมต่อสายเครือข่ายอยู่
- ตรวจสอบว่าเครื่องพิมพ์และเราเตอร์ ไร้สายเปิดอยู่และมีไฟเข้า พร้อมทั้งตรวจสอบว่าเปิดสวิตช์เปิด/ปิดอุปกรณ์ไร้สายแล้ว
- ตรวจสอบว่าเครื่องพิมพ์อยู่ภายในช่วงของเครือข่ายไร้สาย สำหรับเครือข่ายส่วนใหญ่ เครื่องพิมพ์ต้องอยู่ภายในช่วง 30 ม. (100 ฟุต) ของจุดเข้าใช้งานไร้สาย (เราเตอร์ไร้สาย)
- ตรวจสอบว่าติดตั้งไดรเวอร์การพิมพ์บนคอมพิวเตอร์แล้ว
- ตรวจสอบว่าคอมพิวเตอร์และเครื่องพิมพ์เชื่อมต่อกับเครือข่ายไร้สายเดียวกัน
- สำหรับ Mac ให้ตรวจสอบว่าเราเตอร์ ไร้สายสนับสนุน Bonjour
- รีเซ็ตเราเตอร์ไร้สาย

การแก้ไขปัญหาโทรสารเบื้องต้น (รุ่นโทรสารเท่านั้น)

ตรวจสอบการเชื่อมต่อสายบนตัวเครื่อง

- ตรวจสอบว่าสายโทรศัพท์ต่อเข้ากับพอร์ตโทรสาร  ที่ด้านหลังของเครื่องพิมพ์ และต่อเข้ากับแจ็คโทรศัพท์บนผนัง
- สำหรับโทรศัพท์ภายในหรืออุปกรณ์เสริมอื่นๆ ให้ตรวจสอบว่า สายโทรศัพท์ต่อกับพอร์ตโทรศัพท์  ที่ด้านหลังของเครื่องพิมพ์ และต่อกับอุปกรณ์ดังกล่าวด้วย
- หากไม่สามารถโทรออกได้ เนื่องจากตรวจไม่พบสัญญาณโทรศัพท์ หรือสายไม่วางให้ต่อกับสายโทรศัพท์เส้นอื่น
- สำหรับบริการโทรสารบน IP (Fax over IP) ให้ลด **ความเร็วโทรสาร** และปิด **โหมดแก้ไขข้อผิดพลาด** จากเมนู การติดตั้งโทรสาร บนแผงควบคุมเครื่องพิมพ์

ตรวจสอบการตั้งค่าโทรสารของเครื่องพิมพ์

- ในการใช้บริการข้อความเสียงจากบริษัทโทรศัพท์หรือผู้ให้บริการโทรศัพท์ ให้ตรวจสอบให้แน่ใจว่า **จำนวนการเรียกก่อนตอบรับ**ของเครื่องพิมพ์ตั้งไว้ที่ค่าน้อยกว่าจำนวนการเรียกของเครื่องตอบรับโทรศัพท์
- หากมีการกำหนดหมายเลขโทรศัพท์หลายหมายเลขให้กับสายโทรศัพท์เดียวกัน และมีการใช้สายโทรศัพท์ดังกล่าวร่วมกันระหว่างอุปกรณ์หลายเครื่อง โปรดตรวจสอบให้แน่ใจว่ามีการตั้งค่าเสียงเรียกเฉพาะที่ถูกต้องให้กับเครื่องพิมพ์ โดยให้ใช้การตั้งค่าที่กำหนดให้เครื่องพิมพ์ตอบรับโทรสาร และเพิกเฉยกับประเภทเสียงเรียกอื่นๆ
- การกำหนดการตั้งค่าความเร็วโทรสารเป็น **ปานกลาง (V.17)** หรือ **ช้า (V.29)** ยังสามารถช่วยให้คุณส่งโทรสารได้มีประสิทธิภาพมากขึ้นอีกด้วย



Color LaserJet Pro MFP M178-M181 入門指南

English.....	1
Bahasa Indonesia.....	5
한국어.....	9
ไทย.....	13
繁體中文.....	17
Tiếng Việt.....	21

www.hp.com/support/ljM178MFP

www.register.hp.com

! 重要事項：

依照印表機硬體設定海報的**步驟 1 - 2**進行後，再繼續執行**步驟 3**。



3. 控制面板上的初始設定

在印表機控制面板上，先檢查顯示器狀態，再開始進行軟體安裝。

4. 選擇連線方法

直接在印表機與電腦之間連接的 USB 連線 使用 A 對 B 型 USB 纜線。

Windows

- 請勿在安裝軟體之前連接 USB 纜線。安裝程序會在適當時間提示您接上纜線。如果纜線已經連接，請在安裝提示告訴您將纜線接上時重新啟動印表機。
- 繼續執行「5. 下載與安裝軟體」。

OS X

- 對於 OS X，先連接電腦與印表機之間的 USB 纜線，再進行軟體安裝。
- 繼續執行「5. 下載與安裝軟體」。

有線乙太網路網路連線（選用） 使用標準網路線。

- 將網路線連接至印表機與網路。等待幾分鐘，讓印表機取得網路位址。
- 繼續執行「5. 下載與安裝軟體」。

無線網路連線（僅限無線機型） 雙行控制面板

- 若要將印表機連接至無線 (Wi-Fi) 網路，請確定印表機、存取點和電腦都已開啟，而且電腦已連接至無線網路。
- 安裝軟體期間，可能需要使用 USB 纜線。
- 若要從電腦列印，請繼續執行「5. 下載與安裝軟體」。若要單純從電話或平板電腦列印，請繼續執行「6. 行動列印（選用）」。

手動設定 IP 位址

如需有關如何手動設定 IP 位址的詳細資訊，請參閱印表機使用指南 www.hp.com/support/ljM178MFP。

5. 下載與安裝軟體



方法 1：下載 HP Easy Start (Windows 和 OS X)

1. 前往 123.hp.com/laserjet，然後按一下 **Download** (下載)。
2. 依照螢幕上的指示和提示，將檔案儲存至電腦。
3. 從儲存軟體檔案的資料夾啟動軟體檔案。



方法 2：從印表機支援網站下載 (Windows 和 OS X)

1. 前往 www.hp.com/support/ljm178MFP。
2. 選擇 **Software and drivers** (軟體與驅動程式)。
3. 下載適用於您印表機型號和作業系統的軟體。
4. 從儲存軟體檔案的資料夾啟動軟體檔案。



方法 3：從印表機光碟安裝 (僅限 Windows)

1. 將印表機光碟插入電腦中。
2. 依照螢幕上的指示安裝軟體。

❗ 安裝注意事項

如需印表機所需軟體的詳細資訊，請參閱印表機光碟上的「安裝注意事項」檔案。

Readiris Pro for HP

Readiris Pro 讓您的 HP 產品具備進階 OCR 及掃描功能。輕鬆轉換紙本文件成為可編輯且可搜尋的 PDF 檔案，您立即就能用於儲存和分享。若要從網路下載軟體，請前往：www.hp.com/support/ljm178MFP

選擇 **Drivers** (驅動程式)，選擇適當的作業系統，然後按一下 **Next** (下一步)。按一下 **Application - 3rd Party** (應用程式 - 協力廠商)，然後按一下 **Download** (下載) 按鈕。

6. 行動列印 (選用)

6.1 將裝置連接至無線網路

若要從手機或平板電腦列印，請將裝置連接到與印表機相同的無線網路。

Apple iOS 裝置 (AirPrint)：開啟要列印的項目，然後選擇動作圖示。選擇 **Print** (列印)，選擇印表機，然後選擇 **Print** (列印)。

Android 裝置 (4.4 或更新版本)：開啟要列印的項目，並選擇 **選單** 按鈕。選擇 **Print** (列印)，選擇印表機，然後選擇 **Print** (列印)。

某些裝置需要從 Google Play 商店下載 HP Print Service 外掛應用程式。

Windows Phone：從 Windows 市集下載 HP AiO Remote 應用程式。

❗ 進一步了解行動列印

如需有關這些和其他作業系統 (Chrome/Google 雲端列印) 的更多資訊，請前往 www.hp.com/go/LaserJetMobilePrinting，或掃描 QR 碼。




6.2 Wi-Fi Direct (僅限無線機型)

Wi-Fi Direct 可讓具備 Wi-Fi 功能的裝置 (例如智慧型手機、平板電腦或電腦) 在沒有使用無線路由器或存取點的情況下，直接與印表機進行無線網路連線。連接至印表機的 Wi-Fi Direct 訊號，方法與您將具備 Wi-Fi 功能的裝置連接至新的無線網路或熱點一樣。

啟用 Wi-Fi Direct

依照下列步驟，在 HP 內嵌式 Web 伺服器 (EWS) 中啟用 Wi-Fi Direct：

1. 在印表機控制面板上，按下「設定」 按鈕，接著開啟 **網路設定** 功能表。
2. 開啟下列功能表：
 - **Wi-Fi Direct**
 - **開/關**
3. 選擇 **開啟** 功能表項目。選擇 **關閉** 按鈕會停用 Wi-Fi Direct 列印。

❗ 如需無線列印及無線設定的詳細資訊，請前往 www.hp.com/go/wirelessprinting。

探索印表機

1. 在行動裝置上，開啟 Wi-Fi，然後搜尋無線網路。
2. 選擇如印表機控制面板上所顯示的印表機名稱。
印表機名稱範例：Direct-bb-HP M277 Laserjet

7. 設定 HP ePrint via email (選用)

使用 HP ePrint via email，您只要在任何具備電子郵件功能的裝置上，將文件當做電子郵件附件傳送至印表機的電子郵件地址即可列印該文件，即使您使用的裝置不在同一個網路上也沒問題。

若要使用 HP ePrint via email，印表機必須符合以下要求：

- 印表機必須連線到有線或無線網路，且必須能夠存取網際網路。
- 印表機必須啟用 HP Web 服務，而且您必須已向 HP Connected 註冊印表機。

啟用 HP Web 服務 (僅限無線機型)

1. 將印表機連線到網路後，請列印組態頁並找出印表機的 IP 位址。
2. 開啟電腦上的網頁瀏覽器，並在網址列中輸入印表機 IP 位址。HP 內嵌式 Web 伺服器 (EWS) 即會開啟。
3. 選擇 **HP Web 服務** 標籤，然後按一下 **啟用** 按鈕。印表機會設定網際網路連線，然後出現訊息表示即將列印資訊頁。
4. 按一下 **確定** 按鈕。隨即列印 ePrint 頁面。在 ePrint 頁面上，尋找自動指派給印表機的電子郵件地址。

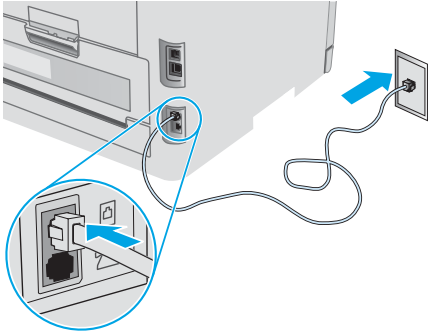
8. 設定傳真（僅限傳真機型 - 選用）

8.1 連接印表機

印表機為類比裝置。HP 建議在專用類比電話線路上使用印表機。

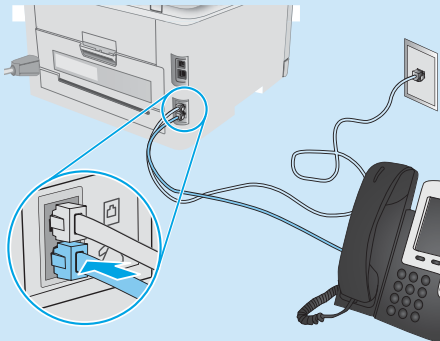
附註：有些國家/地區可能需要為印表機隨附的電話線準備轉接器。

將印表機隨附的電話線連接到印表機上的傳真連接埠和牆上的電話插座。



如何連接答錄機或電話分機？

1. 從電話連接埠取下插頭。
2. 將答錄機電話線從電話插座拔除，然後連接到印表機上的電話連接埠。
3. 將印表機隨附的電話線連接到印表機上的傳真連接埠和牆上的電話插座。



如何在數位電話環境中設定 HP 印表機？

HP 印表機是專為搭配傳統類比電話服務而設計。進行印表機的傳真設定時，數位電話環境（例如 DSL/ADSL、PBX、ISDN 或 FoIP）可能需要數位轉類比過濾器或轉換器。

附註：視電話公司而定，印表機並非與所有的數位服務線路或供應商、所有的數位環境或所有的數位轉類比轉換器都能相容。請聯絡電話公司以判斷哪些設定選項最適合。

附註：在內部和外部通話有不同鈴聲模式的 PBX 電話系統中設定鈴聲模式偵測時，請務必使用外線電話號碼撥打印表機傳真號碼，以便錄製鈴聲模式。

8.2 設定印表機

若要使用傳真功能，必須設定傳真時間、日期及標題設定。

HP 傳真設定精靈 (Windows)

1. 開啟 HP Printer Assistant。
 - **Windows 10：**從開始功能表中，按一下**所有應用程式**，按一下 **HP**，然後選擇印表機名稱。
 - **Windows 8.1：**按一下開始畫面左下角的向下箭號，然後選擇印表機名稱。
 - **Windows 8：**以滑鼠右鍵按一下開始畫面的空白區域，在應用程式列上按一下所有應用程式，然後選擇印表機名稱。
 - **Windows 7、Windows Vista 和 Windows XP：**在電腦桌面上按一下「開始」、選擇「所有程式」、按一下「HP」、按一下印表機的資料夾、選擇有印表機名稱的圖示，然後開啟 HP Printer Assistant。
2. 在 HP Printer Assistant 中選擇**傳真**，然後選擇**傳真設定精靈**。
3. 按照螢幕上的指示設定傳真設定值。

基本設定功能表

1. 在印表機控制面板上，按下「設定」按鈕。
2. 選擇**系統設定**，然後選擇**時間/日期**。
3. 選擇**時間/日期**。
4. 選擇 **12-hour**（12 小時制）或 **24-hour**（24 小時制）。
5. 使用鍵盤輸入目前時間，然後按下**確定**按鈕。
6. 選擇日期格式。
7. 使用鍵盤輸入目前日期，然後按下**確定**按鈕。
8. 在**設定**功能表中，選擇**傳真設定**，然後選擇**傳真標題**。
9. 使用鍵盤輸入傳真號碼，然後按下**確定**按鈕。
附註：傳真號碼的字元數最多為 20 個。
10. 使用鍵盤輸入公司名稱或標題，然後按下**確定**按鈕。
附註：傳真標題的字元數最多為 40 個。

告訴我更多資訊！

如需其他傳真傳送方式（例如排定在日後傳送傳真或從電腦傳送傳真）的詳細資訊，請參閱印表機光碟上的使用指南，或前往：www.hp.com/support/liM178MFP

9. 使用掃描功能

使用電腦上的 HP Scan 軟體啟動印表機的掃描工作。

Windows

開啟 HP Printer Assistant，選擇**掃描**，然後選擇**掃描文件或相片**。

OS X

移至**應用程式**資料夾並開啟 HP Easy Scan。

疑難排解

使用指南

使用指南包含印表機使用方式及疑難排解資訊。這可在印表機光碟或網路上取得：

1. 前往 www.hp.com/support/ijM178MFP
2. 選擇印表機（如果有出現提示），然後按一下 **User Guides**（使用指南）。

檢查韌體更新

1. 前往 www.hp.com/support/ijM178MFP
2. 選擇印表機（如果有出現提示），然後按一下 **Software and Drivers**（軟體與驅動程式）。
3. 選擇作業系統，然後按一下 **Next**（下一步）按鈕。
4. 選擇 **Firmware**（韌體），然後按一下 **Download**（下載）按鈕。

解析錯誤碼訊息（LED 控制面板）

錯誤碼	動作
ER 01	裝入紙張
ER 02	關閉前側擋門
ER 04、ER 05、ER 06	清除卡紙
ER 27	取出 1 號紙匣中多餘的紙張

其他支援資源

如需印表機的 HP 全方位說明，請前往：www.hp.com/support/ijM178MFP

- 解決問題
- 尋找進階組態設定指示
- 下載軟體更新
- 加入支援論壇
- 尋找保固及法規資訊
- 存取行動列印資源

有線（乙太網路）網路連線（選用）

- 確認印表機以長度合適的纜線連接到正確的網路連接埠。
- 確認網路連接埠旁邊的指示燈已亮起。
- 確認電腦已安裝列印驅動程式。
- 使用 Ping 指令偵測網路以測試網路通訊：

Windows

按一下**開始** > **執行**。輸入 **cmd**，並按下 **Enter**。依序輸入 **ping**、空格、印表機 IP 位址，然後按下 **Enter**。**IP 位址範例**：192.168.0.1。若要尋找印表機 IP，請參閱「尋找印表機 IP 位址」。

OS X

開啟「網路工具程式」，並在 **ping** 窗格中輸入 IP 位址。按下 **Enter**。**IP 位址範例**：192.168.0.1。若要尋找印表機 IP，請參閱「尋找印表機 IP 位址」。

- 如果視窗顯示往返時間，表示網路運作正常。
- 如果 Ping 沒有作用，請嘗試重新啟動印表機，再重新檢查所有的連線步驟。

無線網路連線（無線機型）

- 確認未連接網路線。當網路線已連接時，印表機無法連接至無線網路。
- 確認印表機和無線路由器已開啟且接通電源。此外，確定無線開關已開啟。
- 確認印表機位於無線網路範圍內。對多數網路而言，印表機必須是在距離無線存取點（無線路由器）30 公尺（100 英尺）以內的位置。
- 確認電腦已安裝列印驅動程式。
- 確認電腦和印表機連接至相同的無線網路。
- 若是使用 Mac，請確認無線路由器支援 Bonjour。
- 重新啟動無線路由器。

傳真疑難排解（僅限傳真機型）

檢查實體連線

- 確認電話線已連接到印表機背面傳真連接埠和牆上插座。
- 對於電話分機或其他附加裝置，請確認電話線已連接到印表機背面電話連接埠和裝置。
- 如果因為偵測不到撥號音或在忙線中而無法對外撥打電話，請連接到不同的電話線路。
- 若是使用網路傳真 (Fax over IP) 服務，請降低**傳真速度**，並關閉**錯誤更正模式**（位於印表機控制面板上的**傳真設定**功能表中）。

檢查印表機傳真設定

- 若要使用電話公司或服務供應商提供的語音信箱服務，請確定印表機**接聽鈴聲次數**設定所設定的鈴聲次數比電話答錄機的還要少。
- 如果已將多組電話號碼指定給同一條實體電話線路，而且有多台裝置共用該線路時，請確定印表機設定了正確的區別鈴聲設定。使用一個會讓印表機接聽傳真而忽略其他鈴聲類型的設定。
- 將「傳真速度」設定設為**中等 (V.17)** 或**慢速 (V.29)**，也可以改善傳送傳真的功能。



Hướng dẫn bắt đầu sử dụng Color LaserJet Pro MFP M178-M181

English.....1

Bahasa Indonesia.....5

한국어.....9

ไทย.....13

繁體中文.....17

Tiếng Việt.....21



www.hp.com/support/ljM178MFP



www.register.hp.com



QUAN TRỌNG:

Hãy thực hiện **Bước 1 - 2** trên áp phích thiết lập phần cứng máy in, rồi tiếp tục với **Bước 3**.



3. Thiết lập ban đầu trên bảng điều khiển

Tại bảng điều khiển của máy in, kiểm tra trạng thái hiển thị trước khi bắt đầu cài đặt phần mềm.

4. Chọn phương pháp kết nối



Kết nối USB trực tiếp giữa máy in và máy tính

Sử dụng cáp USB loại A-đến-B.

Windows

1. Không kết nối cáp USB trước khi cài đặt phần mềm. Quy trình cài đặt sẽ nhắc cắm cáp vào thời điểm phù hợp. Nếu đã cắm cáp, hãy khởi động lại máy in khi quá trình cài đặt nhắc cắm cáp.
2. Tiếp tục với **"5. Tải xuống và cài đặt phần mềm"**.

OS X

1. Đối với OS X, cắm cáp USB từ máy tính đến máy in trước khi cài đặt phần mềm.
2. Tiếp tục với **"5. Tải xuống và cài đặt phần mềm"**.



Kết nối mạng không dây (Chỉ dành cho kiểu máy không dây)

Bảng điều khiển 2 dòng

1. Để kết nối máy in với mạng không dây (Wi-Fi), hãy đảm bảo bật máy in, điểm truy cập và máy tính và kết nối máy tính với mạng không dây.
2. Cáp USB có thể được yêu cầu trong quá trình cài đặt phần mềm.
3. Để in từ máy tính, tiếp tục với **"5. Tải xuống và cài đặt phần mềm"**. Để chỉ in từ điện thoại hoặc máy tính bảng, hãy tiếp tục với **"6. In từ thiết bị di động (Tùy chọn)"**.



Kết nối mạng Ethernet có dây (Tùy chọn)

Sử dụng cáp mạng tiêu chuẩn.

1. Cắm cáp mạng vào máy in và vào mạng. Đợi vài phút để máy in xác định địa chỉ mạng.
2. Tiếp tục với **"5. Tải xuống và cài đặt phần mềm"**.

Định cấu hình địa chỉ IP theo cách thủ công

Hãy xem phần hướng dẫn sử dụng máy in để biết thông tin về cách định cấu hình thủ công địa chỉ IP www.hp.com/support/ljM178MFP.

5. Tải xuống và cài đặt phần mềm

Phương pháp 1: Tải xuống HP Easy Start (Windows và OS X)

1. Truy cập 123.hp.com/laserjet và nhấp vào **Download** (Tải xuống).
2. Làm theo hướng dẫn và lời nhắc trên màn hình để lưu tệp vào máy tính.
3. Khởi chạy tệp phần mềm từ thư mục lưu tệp.

Phương pháp 2: Tải xuống từ trang web hỗ trợ máy in (Windows và OS X)

1. Truy cập www.hp.com/support/ljM178MFP.
2. Chọn **Phần mềm và trình điều khiển**.
3. Tải phần mềm xuống cho kiểu máy in và hệ điều hành của bạn.
4. Khởi chạy tệp phần mềm từ thư mục lưu tệp.

Phương pháp 3: Cài đặt từ đĩa CD máy in (Chỉ dành cho Windows)

1. Đưa đĩa CD máy in vào máy tính.
2. Làm theo hướng dẫn trên màn hình để cài đặt phần mềm.

i Lưu ý khi cài đặt

Để biết thêm thông tin chi tiết về phần mềm dành cho máy in, hãy xem tệp ghi chú cài đặt trên CD của máy in.

Readiris Pro dành cho HP

Readiris Pro cung cấp cho các sản phẩm HP của bạn những tính năng quét và OCR nâng cao. Dễ dàng chuyển đổi tài liệu giấy của bạn thành các tệp PDF có thể chỉnh sửa và tìm kiếm, sẵn sàng được lưu trữ và chia sẻ. Để tải xuống phần mềm từ Web, hãy truy cập: www.hp.com/support/ljM178MFP

Chọn **Trình điều khiển**, chọn hệ điều hành thích hợp và nhấp vào **Next** (Tiếp theo). Nhấp vào **Ứng dụng - Bên thứ ba** và sau đó nhấp vào nút **Download** (Tải xuống).

6. In từ thiết bị di động (Tùy chọn)

6.1 Kết nối thiết bị với mạng không dây

Để in từ điện thoại hoặc máy tính bảng, hãy kết nối thiết bị với cùng một mạng không dây như máy in.

Thiết bị iOS của Apple (AirPrint): Mở mục cần in và chọn biểu tượng Tác vụ. Chọn **In**, chọn máy in và sau đó chọn **In**.

Thiết bị Android (4.4 trở lên): Mở mục cần in và chọn nút **Menu**. Chọn **In**, chọn máy in và chọn **In**.

Một số thiết bị yêu cầu tải xuống ứng dụng plugin HP Print Service từ Cửa hàng Google Play.

Windows Phone: Tải xuống ứng dụng HP AiO Remote từ Windows Store.

i Tìm hiểu thêm về tính năng in từ thiết bị di động

Để biết thêm thông tin về các nội dung này và các hệ điều hành khác (Chrome/Google Cloud Print), truy cập www.hp.com/go/LaserJetMobilePrinting hoặc quét mã QR.



6.2 Wi-Fi Direct (Chỉ dành cho kiểu máy không dây)

Wi-Fi Direct cho phép các thiết bị tương thích với Wi-Fi, chẳng hạn như điện thoại thông minh, máy tính bảng hoặc máy tính thực hiện kết nối không dây trực tiếp với máy in mà không cần sử dụng điểm truy cập hoặc bộ định tuyến không dây. Kết nối với tín hiệu Wi-Fi Direct của máy in theo cách giống như các thiết bị tương thích Wi-Fi kết nối với điểm truy cập hoặc mạng không dây mới.

Bật Wi-Fi Direct

Bật Wi-Fi Direct trong HP Embedded Web Server (EWS) bằng cách làm theo các bước sau:

1. Trên bảng điều khiển máy in, nhấn nút Setup (Thiết lập) rồi sau đó mở menu **Thiết lập mạng**.
2. Mở các menu sau:
 - **Wi-Fi Direct**
 - **Bật/Tắt**
3. Chọn mục menu **Bật**. Việc chọn nút **Off** (Tắt) sẽ tắt in bằng Wi-Fi Direct.

i Để biết thêm thông tin về thiết lập mạng không dây và in không dây, hãy truy cập www.hp.com/go/wirelessprinting.

Phát hiện máy in

1. Từ thiết bị di động, bật Wi-Fi và tìm mạng không dây.
2. Chọn máy in như hiển thị trên bảng điều khiển máy in.
Tên máy in mẫu: Direct-bb-HP M277 Laserjet

7. Thiết lập HP ePrint qua email (Tùy chọn)

Sử dụng HP ePrint qua email để in tài liệu bằng cách gửi tài liệu dưới dạng tệp đính kèm trong email đến địa chỉ email của máy in từ bất kỳ thiết bị nào hỗ trợ email, thậm chí từ các thiết bị không sử dụng cùng một mạng.

Để sử dụng HP ePrint qua email, máy in phải đáp ứng các yêu cầu sau:

- Máy in phải được kết nối với mạng không dây hoặc có dây và phải có khả năng truy cập vào Internet.
- Máy in phải bật HP Web Services (Dịch vụ web của HP) và phải được đăng ký với HP Connected.

Kích hoạt HP Web Services (Dịch vụ web của HP) (Chỉ dành cho kiểu máy không dây)

1. Sau khi máy in được nối mạng, in trang cấu hình và xác định địa chỉ IP của máy in.
2. Trên máy tính, mở trình duyệt web và nhập địa chỉ IP của máy in vào dòng địa chỉ. Máy chủ web nhúng (EWS) của HP sẽ mở.
3. Chọn tab **Dịch vụ web của HP** và nhấp vào nút **Enable** (Bật). Máy in định cấu hình kết nối với Internet, sau đó xuất hiện thông báo cho biết tờ thông tin sẽ được in.
4. Nhấp vào nút **OK**. Trang ePrint sẽ được in ra. Trên trang ePrint, tìm địa chỉ email được gán tự động cho máy in.

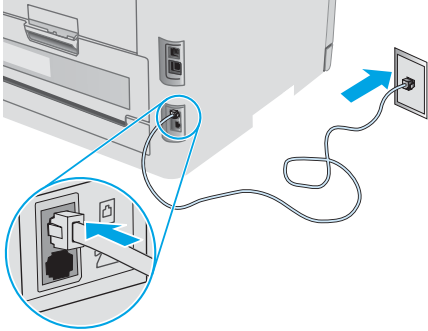
8. Thiết lập fax (Chỉ dành cho kiểu máy fax - tùy chọn)

8.1 Kết nối máy in

Máy in là thiết bị analog. HP khuyến cáo bạn nên sử dụng máy in trên đường dây điện thoại analog chuyên dụng.

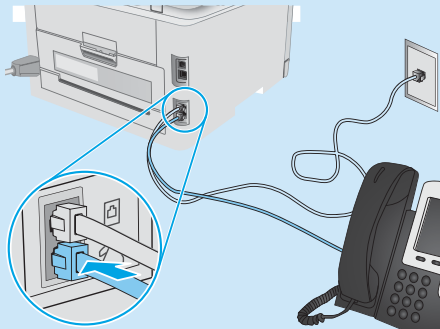
LƯU Ý: Bạn có thể phải sử dụng bộ điều hợp cho dây điện thoại đi kèm với sản phẩm tại một số quốc gia/vùng.

Cắm dây điện thoại đi kèm với máy in vào cổng Fax trên máy in và vào giắc cắm điện thoại trên tường.



1 Làm thế nào để tôi kết nối máy trả lời tự động hoặc điện thoại nhánh?

1. Rút phích cắm ra khỏi cổng điện thoại.
2. Tháo dây điện thoại của máy trả lời tự động ra khỏi giắc điện thoại rồi cắm dây đó vào cổng điện thoại trên máy in.
3. Cắm dây điện thoại đi kèm với máy in vào cổng fax trên máy in và vào giắc cắm điện thoại trên tường.



1 Làm thế nào để tôi cài đặt máy in HP trong môi trường điện thoại kỹ thuật số?

Các máy in HP được thiết kế riêng cho mục đích sử dụng với các dịch vụ điện thoại analog truyền thống. Đối với môi trường điện thoại kỹ thuật số (như DSL/ADSL, PBX, ISDN hay VoIP), bạn có thể cần dùng đến bộ lọc hoặc bộ chuyển đổi tín hiệu kỹ thuật số thành analog khi cài đặt máy in cho chức năng fax.

Lưu ý: Tùy theo công ty điện thoại, máy in có thể không tương thích với tất cả các đường dây hoặc nhà cung cấp dịch vụ kỹ thuật số, trong tất cả các môi trường kỹ thuật số hoặc với tất cả các bộ chuyển đổi tín hiệu kỹ thuật số thành analog. Hãy liên lạc với công ty điện thoại để xác định xem tùy chọn cài đặt nào là phù hợp nhất.

Lưu ý: Khi cài đặt chức năng dò tìm mẫu đồ chuông trong hệ thống điện thoại PBX được thiết lập các mẫu đồ chuông khác nhau cho cuộc gọi nội bộ và từ bên ngoài, hãy bảo đảm rằng bạn quay số fax của máy in bằng số bên ngoài để ghi lại mẫu đồ chuông.

8.2 Định cấu hình máy in

Bạn phải cấu hình các cài đặt ngày, giờ và tiêu đề fax để sử dụng tính năng fax.

Trình hướng dẫn cài đặt fax HP (Windows)

1. Mở HP Printer Assistant (Trợ lý máy in HP).
 - **Windows 10:** Từ menu **Bắt đầu**, nhấp vào **Tất cả ứng dụng**, nhấp vào **HP** và sau đó chọn tên máy in.
 - **Windows 8.1:** Nhấp vào mũi tên xuống ở góc dưới bên trái màn hình Start (**Bắt đầu**) và chọn tên máy in.
 - **Windows 8:** Nhấp chuột phải vào khu vực trống trên màn hình Start (**Bắt đầu**), nhấp All Apps (**Tất cả ứng dụng**) trên thanh ứng dụng, sau đó chọn tên máy in.
 - **Windows 7, Windows Vista và Windows XP:** Từ màn hình máy tính, nhấp **Bắt đầu**, chọn **Tất cả chương trình**, nhấp vào **HP**, nhấp vào thư mục của máy in, chọn biểu tượng có tên máy in và sau đó mở **HP Printer Assistant** (Trợ lý máy in HP).
2. Trong Trợ lý máy in HP, chọn **Fax** và sau đó chọn **Trình hướng dẫn cài đặt fax**.
3. Thực hiện theo hướng dẫn trên màn hình để cấu hình cài đặt fax.

Menu cài đặt cơ bản

1. Trên bảng điều khiển máy in, nhấn nút **Cài đặt**.
2. Chọn **Thiết lập hệ thống** và sau đó chọn **Ngày/Giờ**.
3. Chọn **Ngày/Giờ**.
4. Chọn **12 giờ** hoặc **24 giờ**.
5. Sử dụng bàn phím số để nhập thời gian hiện tại rồi nhấn nút **OK**.
6. Chọn định dạng ngày.
7. Sử dụng bàn phím số để nhập ngày tháng hiện tại rồi nhấn nút **OK**.
8. Từ menu **Thiết lập**, chọn **Thiết lập fax** và sau đó chọn **Tiêu đề fax**.
9. Sử dụng bàn phím số để nhập số fax, rồi nhấn nút **OK**.
LƯU Ý: Số ký tự tối đa cho số fax là 20.
10. Sử dụng bàn phím để nhập tên công ty hoặc tiêu đề rồi nhấn nút **OK**.
LƯU Ý: Số ký tự tối đa cho tiêu đề fax là 40.

1 Hãy tìm hiểu thêm!

Để biết thêm thông tin về các cách gửi fax khác, như lên lịch để gửi fax sau hay gửi fax từ máy tính, hãy xem hướng dẫn sử dụng trên CD máy in hoặc truy cập: www.hp.com/support/lijM178MFP

9. Sử dụng tính năng quét

Hãy sử dụng phần mềm HP Scan trên máy tính của bạn để bắt đầu lệnh quét trên máy in.

Windows

Mở **Trợ lý máy in HP**, chọn **Quét** và sau đó chọn **Quét tài liệu hoặc ảnh**.

OS X

Chuyển tới thư mục **Ứng dụng** và mở **HP Easy Scan**.

Xử lý sự cố

Hướng dẫn sử dụng

Hướng dẫn sử dụng có chứa thông tin về việc sử dụng máy in và cách xử lý sự cố. Hướng dẫn này có trên CD máy in và trên Web:

1. Truy cập www.hp.com/support/ljM178MEFP.
2. Chọn máy in nếu được nhắc và sau đó nhấp vào **Hướng dẫn sử dụng**.

Kiểm tra các bản cập nhật của chương trình cơ sở

1. Truy cập www.hp.com/support/ljM178MEFP.
2. Chọn máy in nếu được nhắc và sau đó nhấp vào **Phần mềm và trình điều khiển**.
3. Chọn hệ điều hành và nhấp vào nút **Next** (Tiếp theo).
4. Chọn **Chương trình cơ sở** và nhấp vào nút **Download** (Tải xuống).

Giải quyết thông báo mã lỗi (Bảng điều khiển LED)

Mã lỗi	Thao tác
ER 01	Nạp giấy
ER 02	Đóng cửa trước
ER 04, ER 05, ER 06	Xử lý kẹt giấy
ER 27	Lấy giấy còn thừa ra khỏi Khay 1

Tài nguyên hỗ trợ bổ sung

Để xem phần trợ giúp toàn diện của HP dành cho máy in, hãy truy cập: www.hp.com/support/ljM178MEFP

- Giải quyết sự cố
- Tìm hướng dẫn cấu hình nâng cao
- Tải xuống các bản cập nhật phần mềm
- Tham gia các diễn đàn hỗ trợ
- Tìm thông tin về quy định và bảo hành
- Truy cập vào tài nguyên in dành cho thiết bị di động

Kết nối mạng có dây (Ethernet) (Tùy chọn)

- Hãy kiểm tra xem máy in có được cắm vào đúng cổng mạng bằng cáp có độ dài phù hợp không.
- Kiểm tra xem các đèn bên cạnh cổng mạng có sáng không.
- Xác minh rằng trình điều khiển in đã được cài đặt trên máy tính.
- Kiểm tra kết nối mạng bằng cách ping mạng:

Windows

Nhấp vào **Start** > **Run** (Bắt đầu > Chạy). Nhập **cmd** và nhấn **Enter**. Nhập **ping**, nhập khoảng trắng, nhập địa chỉ IP máy in, sau đó nhấn **Enter**. Ví dụ về địa chỉ IP: 192.168.0.1. Để tìm IP của máy in, hãy xem "Find the printer IP address (Tìm địa chỉ IP của máy in)".

OS X

Mở Tiện ích mạng và nhập địa chỉ IP vào ngăn **ping**. Nhấn **Enter**. Ví dụ về địa chỉ IP: 192.168.0.1. Để tìm IP của máy in, hãy xem "Find the printer IP address (Tìm địa chỉ IP của máy in)".



- Nếu cửa sổ hiển thị thời gian hai chiều, thì mạng đang hoạt động.
- Nếu ping không hoạt động, hãy thử khởi động lại máy in và kiểm tra lại tất cả các bước kết nối.

Kết nối mạng không dây (Chỉ dành cho kiểu máy không dây)

- Xác minh rằng cáp mạng không được kết nối. Máy in không thể kết nối với mạng không dây khi đã cắm cáp mạng.
- Xác minh rằng máy in và bộ định tuyến mạng không dây đã được bật và có điện. Ngoài ra, hãy đảm bảo rằng nút không dây được bật.
- Xác minh rằng máy in nằm trong phạm vi của mạng không dây. Đối với hầu hết các mạng, máy in phải nằm trong phạm vi 30 m (100 ft) của điểm truy cập không dây (bộ định tuyến mạng không dây).
- Xác minh rằng trình điều khiển in đã được cài đặt trên máy tính.
- Xác minh rằng máy tính và máy in kết nối với cùng một mạng không dây.
- Đối với máy Mac, xác minh rằng bộ định tuyến không dây hỗ trợ Bonjour.
- Khởi động lại bộ định tuyến không dây.

Xử lý sự cố fax (Chỉ dành cho các kiểu fax)

Xác minh kết nối thực tế

- Xác minh rằng dây điện thoại được cắm vào cổng fax  ở mặt sau của máy in và vào giắc cắm trên tường.
- Đối với điện thoại nhánh hoặc thiết bị bổ sung khác, hãy xác minh rằng dây điện thoại được cắm vào cổng điện thoại  ở mặt sau của máy in và vào thiết bị.
- Nếu bạn không thực hiện được cuộc gọi đi vì máy không dò tìm được âm quay số hay đường dây bận, hãy kết nối máy với đường dây điện thoại khác.
- Đối với dịch vụ Fax qua IP, hãy giảm **Tốc độ fax** và tắt **Chế độ chỉnh sửa lỗi** từ menu **Cài đặt fax** trên bảng điều khiển máy in.

Xác minh cài đặt fax của máy in

- Để sử dụng dịch vụ thư thoại từ công ty điện thoại hoặc nhà cung cấp dịch vụ, hãy bảo đảm rằng cài đặt **Số lần đổ chuông trước khi trả lời** của máy in được đặt ở giá trị thấp hơn mức dành cho máy trả lời điện thoại tự động.
- Nếu có nhiều số điện thoại được chỉ định cho cùng một đường dây điện thoại thực tế và đường dây đó được dùng chung cho nhiều thiết bị, hãy bảo đảm rằng máy in được thiết lập cài đặt đổ chuông riêng thích hợp. Sử dụng mục cài đặt sao cho máy in nhận bản fax và bỏ qua các kiểu đổ chuông khác.
- Việc cấu hình cài đặt **Tốc độ fax** thành **Trung bình (V.17)** hoặc **Chậm (V.29)** cũng có thể giúp cải thiện khả năng gửi fax.

© Copyright 2017 HP Development Company, L.P.

Reproduction, adaptation or translation without prior written permission is prohibited, except as allowed under the copyright laws.

The information contained herein is subject to change without notice.

The only warranties for HP products and services are set forth in the express warranty statements accompanying such products and services. Nothing herein should be construed as constituting an additional warranty. HP shall not be liable for technical or editorial errors or omissions contained herein.

Trademark Credits

Windows® is a U.S. registered trademark of Microsoft Corporation.

Apple and the Apple logo are trademarks of Apple Inc., registered in the U.S. and other countries.

OS X is a trademark of Apple Inc., registered in the U.S. and other countries.

AirPrint is a trademark of Apple Inc., registered in the U.S. and other countries.

FCC Regulations

This equipment has been tested and found to comply with the limits for a Class B digital device, pursuant to Part 15 of the FCC rules. These limits are designed to provide reasonable protection against harmful interference in a residential installation. This equipment generates, uses, and can radiate radio-frequency energy. If this equipment is not installed and used in accordance with the instructions, it may cause harmful interference to radio communications. However, there is no guarantee that interference will not occur in a particular installation. If this equipment does cause harmful interference to radio or television reception, which can be determined by turning the equipment off and on, correct the interference by one or more of the following measures:

- Reorient or relocate the receiving antenna.
- Increase separation between equipment and receiver.
- Connect equipment to an outlet on a circuit different from that to which the receiver is located.
- Consult your dealer or an experienced radio/TV technician.

Any changes or modifications to the product that are not expressly approved by HP could void the user's authority to operate this equipment. Use of a shielded interface cable is required to comply with the Class B limits of Part 15 of FCC rules. For more regulatory information, see the electronic user guide. HP shall not be liable for any direct, indirect, incidental, consequential, or other damage alleged in connection with the furnishing or use of this information.

www.hp.com

