

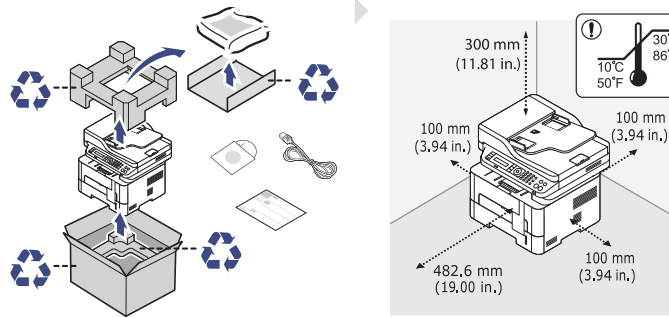
MUST READ QUICK INSTALLATION GUIDE

Samsung Multifunction **Xpress**

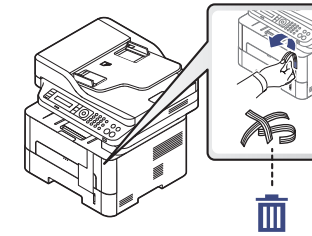
M267x series
M287x series
M288x series
M306x series

Guide d'installation rapide

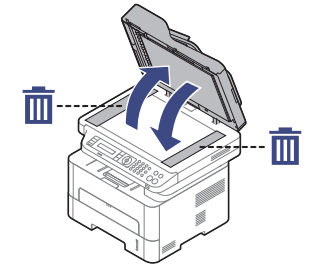
PREPARING PRÉPARATION



Detach / Détachez

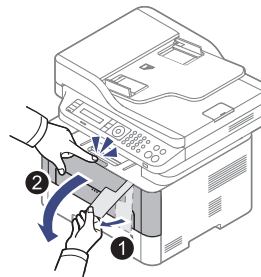


Remove / Retirez

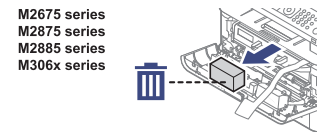
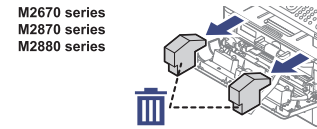


INSTALLING THE TONER CARTRIDGE INSTALLATION DE LA CARTOUCHE DE TONER

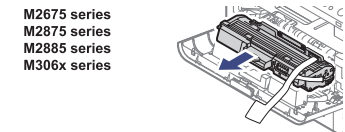
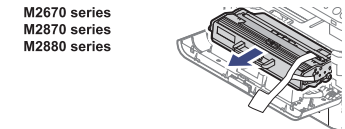
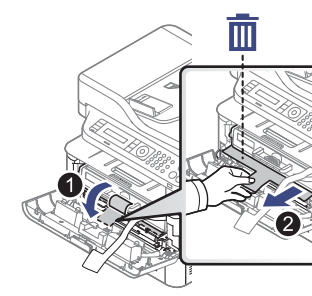
Open / Ouvrez



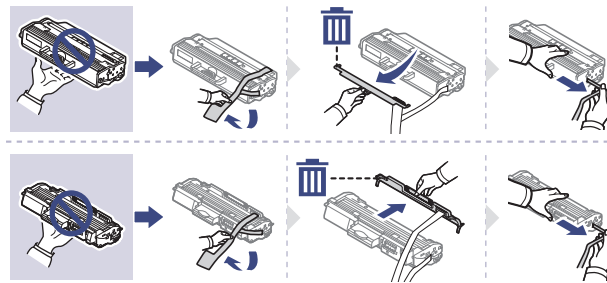
Remove / Retirez



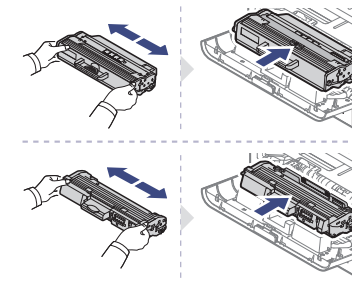
Take out / Sortez



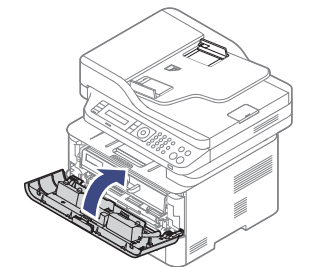
Remove / Retirez



Shake / Secouez & Insert / Insérez

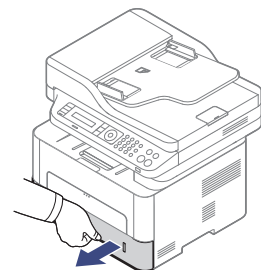


Close / Fermez

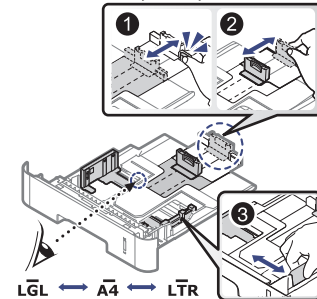


LOADING PAPER CHARGEMENT DU PAPIER

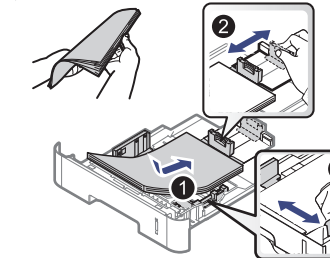
Open / Ouvrez



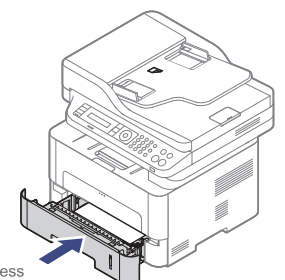
Adjust / Ajuster



Insert / Insérez



Close / Fermez



* The illustration may differ from your machine depending on your model.

Selon le modèle, cette illustration peut différer de votre appareil.

Letter Xerox Business Multipurpose 4200 or 20lb, 92 brightness
A4 Xerox Premier or 80g/m², 92 brightness



JC68-02960A10

SAMSUNG

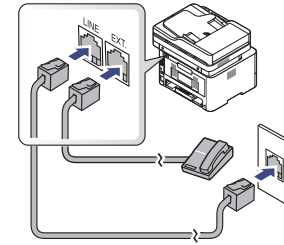
CONNECTING POWER BRANCHEMENT DU D'ALIMENTATION

Power on / Marche



Wait a few seconds for the machine to warm up.
Attendre quelques secondes que la machine sse réchauffe.

Connecting Fax Line (fax user only) Branchement de la ligne de fax (utilisateur de fax uniquement)



INSTALLING SOFTWARE AND CHOOSING INTERFACE CONNECT TYPE

INSTALLATION DU LOGICIEL ET SÉLECTION DU TYPE DE BRANCHEMENT DE L'INTERFACE

www.samsung.com/printersetup

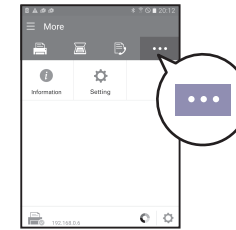
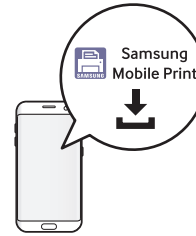


Windows only
Windows uniquement



Easy wireless setup by app (Wireless model only).

Configuration aisée sans fil au moyen de l'application (Modèles sans fil uniquement).



For detailed information about the wireless setup, refer to the User Guide.

Pour des informations détaillées sur la configuration sans fil, veuillez-vous référer au mode d'emploi.

VIEWING THE USER GUIDE

Be sure to read the safety guidelines in the User Guide.

Veillez à bien lire les directives de sécurité de guide de l'utilisateur.

AFFICHAGE DU GUIDE DE L'UTILISATEUR

