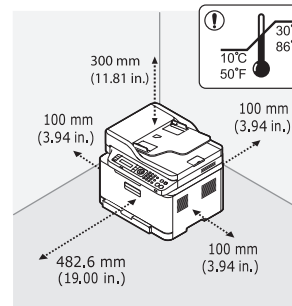
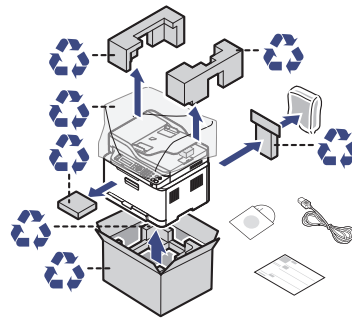


MUST READ QUICK INSTALLATION GUIDE

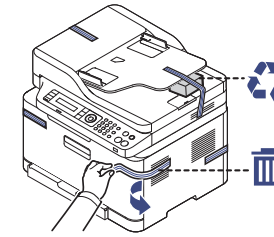
Samsung Printer **Xpress**
C48xFN series
C48xFW series

Guide d'installation rapide

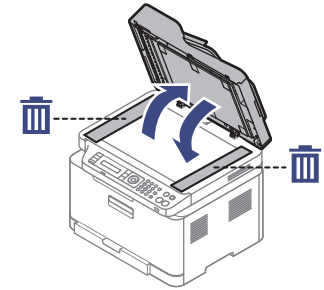
PREPARING PRÉPARATION



Detach / Détachez

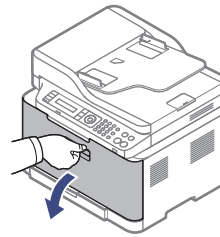


Remove / Retirez

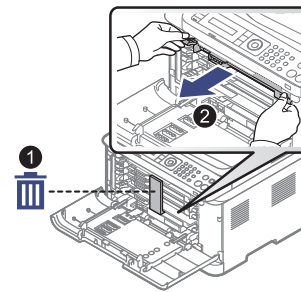


INSTALLING THE TONER CARTRIDGES INSTALLATION DES CARTOUCHES DE TONER

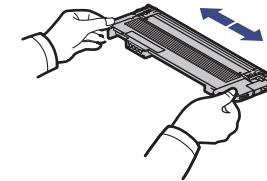
Open / Ouvrez



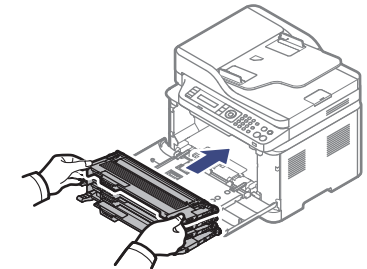
Take out / Sortez



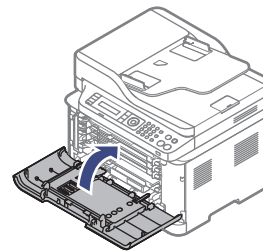
Shake / Secouez



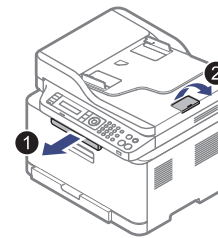
Insert / Insérez



Close / Fermez

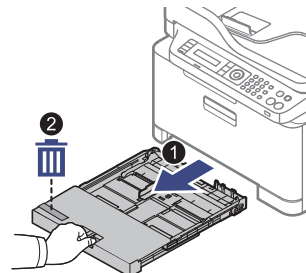


Take out / Sortez

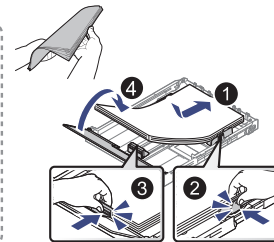
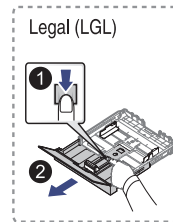
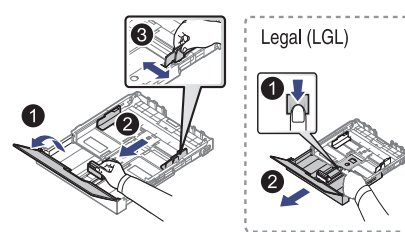


LOADING PAPER CHARGEMENT DU PAPIER

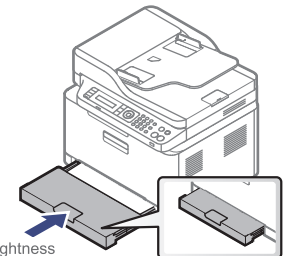
Open / Ouvrez



Adjust / Ajuster & Insert / Insérez



Close / Fermez



Letter Xerox Business Multipurpose 4200 or 20lb, 92 brightness
A4 Xerox Premier or 80g/m², 92 brightness
Photo Glossy Laser Paper 150g

* The illustration may differ from your machine depending on your model.

Selon le modèle, cette illustration peut différer de votre appareil.



JC68-03479A05

CONNECTING POWER CABLE

BRANCHEMENT DU CÂBLE D'ALIMENTATION

Power on / Marche



Wait few seconds for the machine to warm up.
Attendre quelques secondes que la machine se réchauffe.

Connecting Fax Line (fax user only)
Branchement de la ligne de fax (utilisateur de fax uniquement)

INSTALLING SOFTWARE AND CHOOSING INTERFACE CONNECT TYPE

INSTALLATION DU LOGICIEL ET SÉLECTION DU TYPE DE BRANCHEMENT DE L'INTERFACE

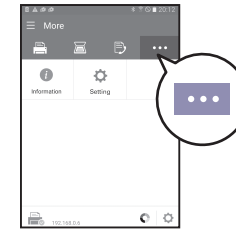
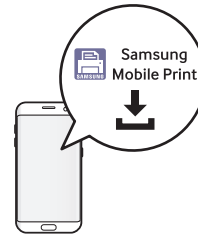
www.samsung.com/printersetup



Windows only
Windows uniquement



Easy wireless setup by app (Wireless model only).
Configuration aisée sans fil au moyen de l'application (Modèles sans fil uniquement).



For detailed information about the wireless setup, refer to the User Guide.
Pour des informations détaillées sur la configuration sans fil, veuillez-vous référer au mode d'emploi.

VIEWING THE USER GUIDE

Be sure to read the safety guidelines in the User Guide.
Veuillez à bien lire les directives de sécurité de guide de l'utilisateur.

AFFICHAGE DU GUIDE DE L'UTILISATEUR

