

# HP Scitex FB5X0/FB7X0 Printers

TECHNICAL NEWSLETTERS FROM CUSTOMER ASSURANCE



Date: May 2018

Impact/Severity: High

Region/Audience: WW Public

Category/Area: Using Product

## Instructions for printing with Roll-to-Roll supply and takeup assemblies

**Background:** FlatBed is world famous for rigid substrates solutions but can be used for flexible substrates printing as well. The Roll-to-Roll kit (L6E80A for FB5X0 / L6E81A for FB7X0) is an upgrade kit that can be activated and installed on demand by your HP Service Representative.

There is a lack of information in the User Guide and this public newsletter aims to provide tips and tricks for experienced operators to save time loading and printing efficiently using the Roll-to-Roll feature.

### 1. Activate and select a roll media:

Roll media do not appear in the list of available media by default.

Follow this path in order to check if the roll media are activated and can be selected for loading:

Tools > Service Printer > Proceed > Support Rollfed > Cut Sheet and Rollfed

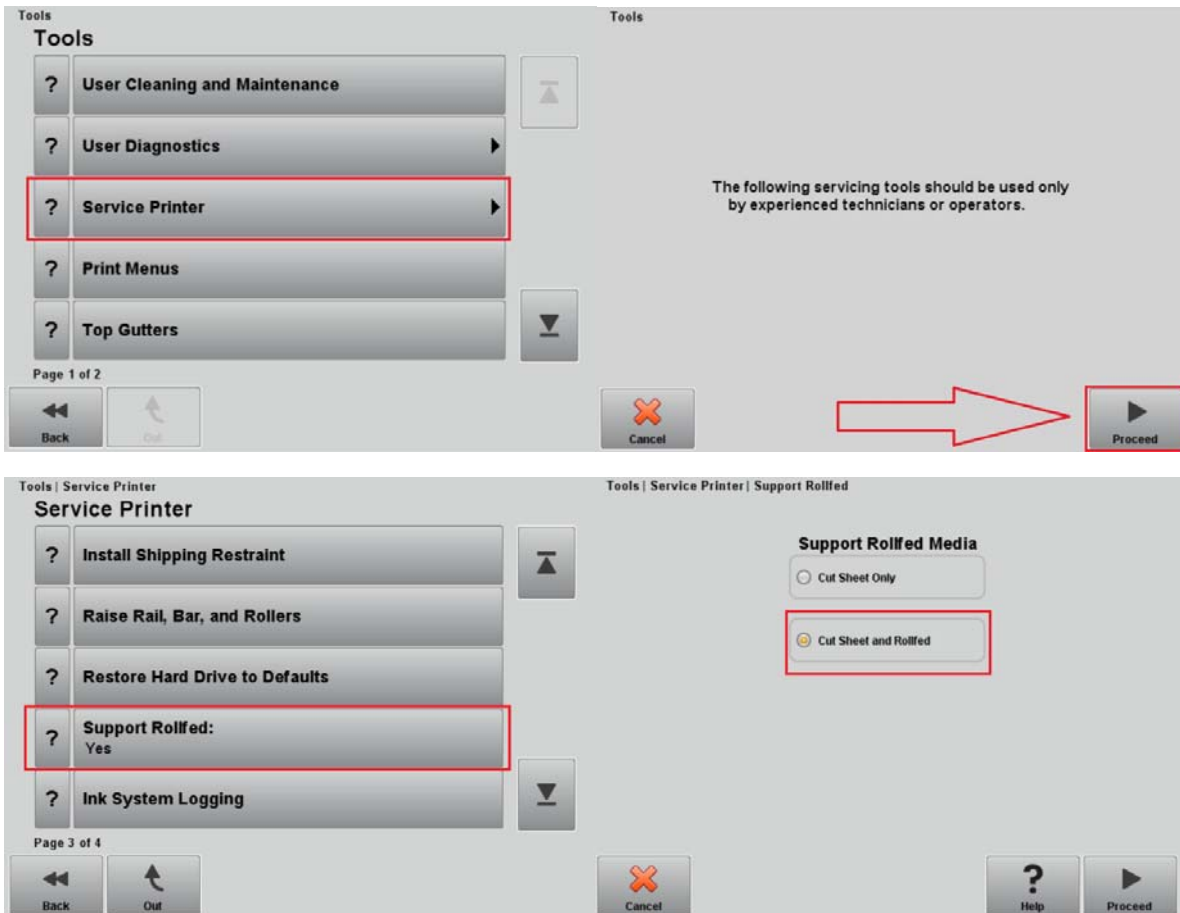


Fig. 1. Path to follow in order to activate R2R (Roll-to-Roll) media in the media load list.

- If the “Cut sheet and Rollfed” option is activated it will enable new roll media to be displayed and selected in the media load list: Frontlit & Backlit Banner, Textile, UV Photobase, Self-Adhesive Vinyl (SAV), Canvas and Clear Film.

## 2. Configure a roll media:

Follow this path to select and configure Roll-to-Roll media: Media Tab > Configure > Select Media to Load.

Then select the kind of Roll Load: for Roll-to-Roll printing select the “**Supply and Takeup**” option.

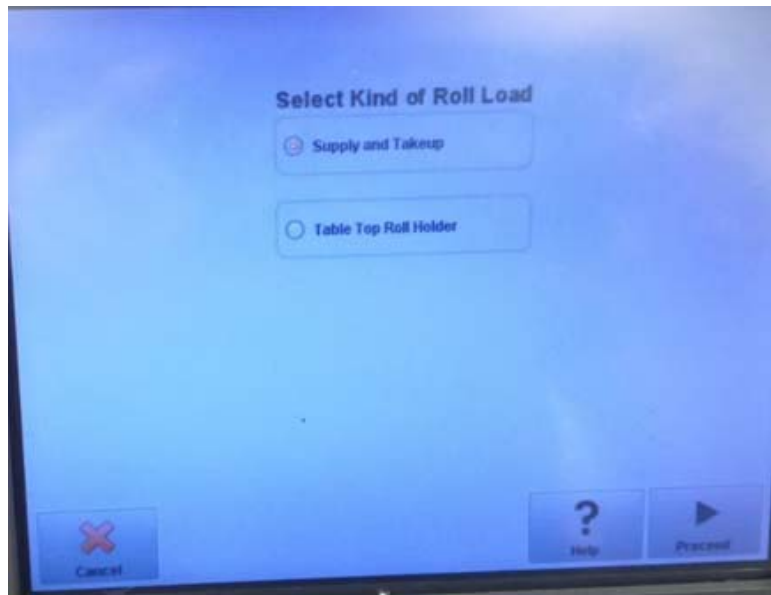


Fig. 2. Select “Supply and Takeup” for R2R (Roll-to-Roll) printing.

- Please refer to page 19 of the User Guide for more information regarding the “Top Table Roll Holder”.

When the printer prompts “Load media now” just select YES if the media is ready for loading.



Fig. 3. Manually load the media on the input spindle or use a carriage/forklift to do so.

If the media is ready for loading **select the load procedure** (there are two options: “Restore Loaded State” or “New Load”):

- If the media has already been properly attached to the take-up spool just **select “Restore Loaded State”**, indicate the thickness (in cm or in inches using a caliper) and the length (in cm or in inches).
- If it is a new roll load select **“New Load”** and follow the steps indicated by the media wizard. It will provide you with visual aids throughout the media loading process:

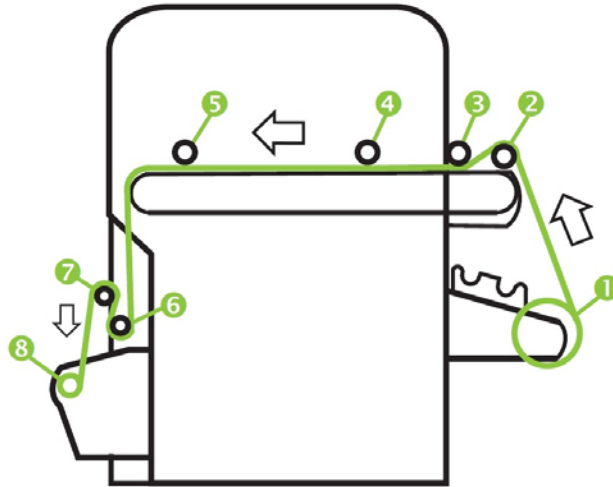


Fig. 4. Roll-to-Roll loading procedure sketch.

**1.** Move the Foam Press Roller to the upper resting position:

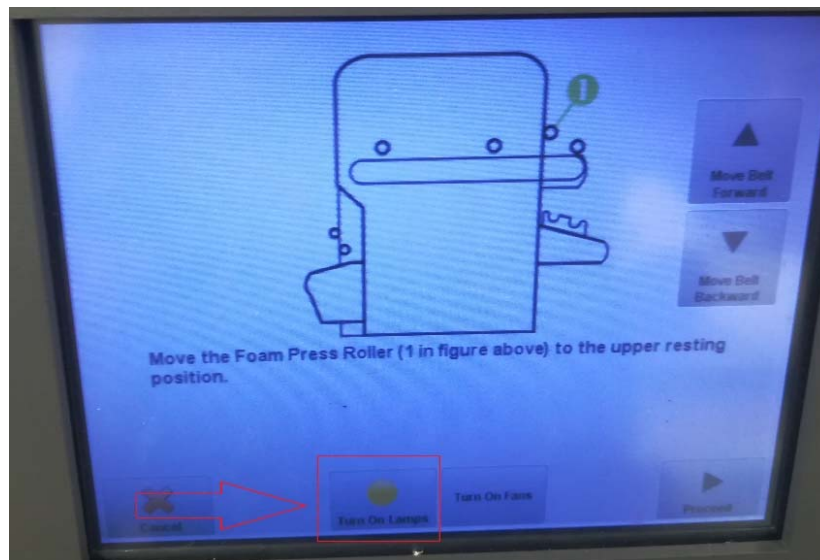


Fig. 5. First step and sketch of the loading procedure.

**Tip:** Save time turning the UV lamps ON before completing the whole loading procedure.

**2.** Pull the media from the roll, pull it over the foam lift roller and lay it on the belt to the input media roller (points 2 & 3 in Fig. 4.).

**3.** Use the belt to pull the media through the printer until it reaches the takeup.

After the media is advanced to the takeup, run the belt with the vacuum fans off for a few seconds to smooth out any wrinkles in the media. **You may have to smooth some wrinkles by hand.**



Fig. 6. Pull the media by hand until it reaches the takeup.

- Press **Proceed** when there are no more wrinkles left.
- Press **Cancel** to exit the media load procedure.

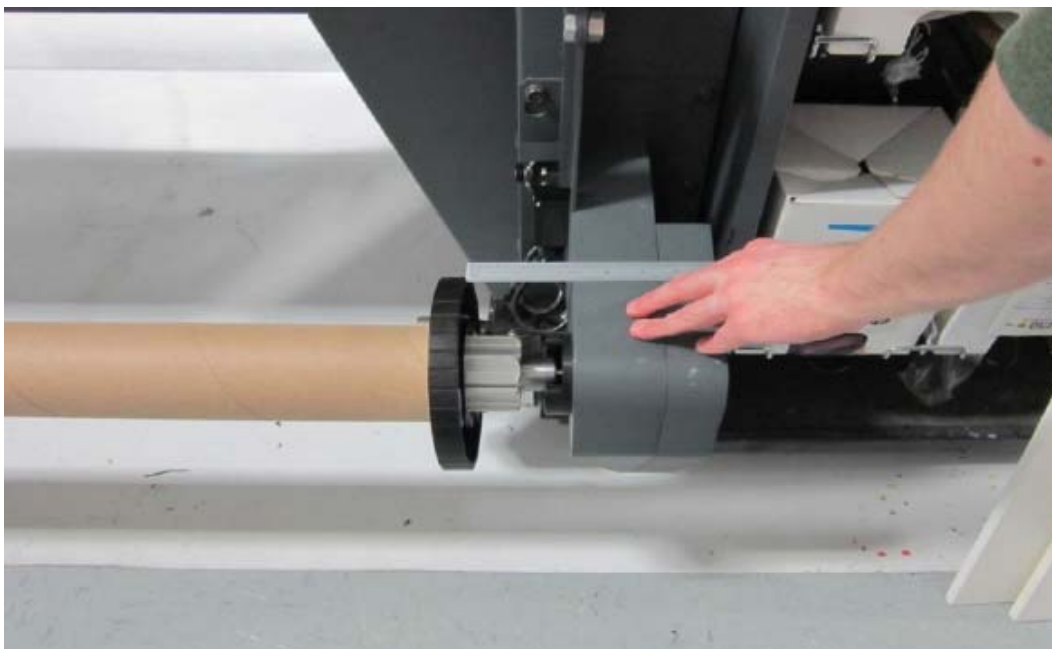
**4.** Move back the foam press roller and press **Proceed**.

**5.** Press **Proceed** once the media has been attached to the takeup, and start printing once you have indicated the thickness and the length of the media (width will be measured by the printer).

**Note:** Press **Help** for step-by-step instructions on how to attach the media to the takeup (points 4 to 8 Fig. 4).

### 3. Additional tips and tricks to attach takeup and ensure best IQ:

1. Use a ruler to ensure that the edge of the media is the same distance from the user-end edge of the belt on both the input and output sides of the printer: it helps to avoid skew.



2. Pull the media under the first dancer bar, over the second dancer bar, and down to the printer side of the takeup roller:



3. Looking down the length of the takeup roller from the user end, the roller rotates clockwise. Ensure that the media is wrapped as shown in the image above.

### Be careful when taping the media to the output core!



**CORRECT WAY** of taping the media to the output core (on the left) vs **WRONG WAY** (on the right) that can result in damaging the printer.

All the steps, tips and tricks described previously are the best operator practices for Roll-to-Roll printing after the kit installation by an HP Service Representative.