

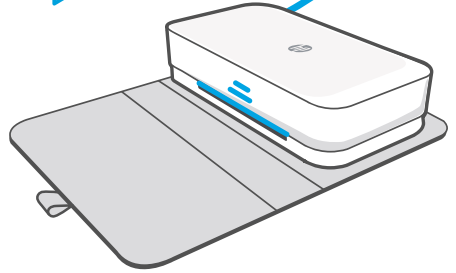


# Tango X



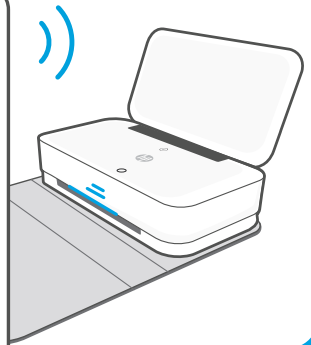
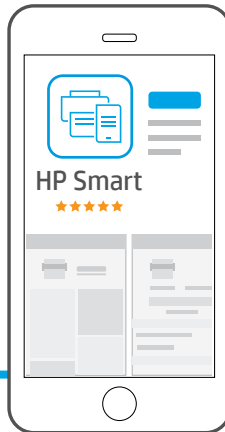
1

- EN Plug in to power on
- ES Enchúfela para encenderla
- FR Branchez pour mettre sous tension



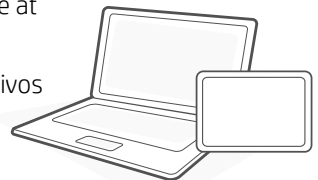
2

- EN HP Smart App **required** for setup
- ES Se **requiere** la aplicación HP Smart para la configuración
- FR Application HP Smart **requisie** pour la configuration



3

- EN After setup, print from more devices with software at [123.hp.com](http://123.hp.com)
- ES Una vez configurada, imprima desde más dispositivos con el software disponible en [123.hp.com](http://123.hp.com)
- FR Après configuration, imprimez depuis davantage d'appareils avec le logiciel sur [123.hp.com](http://123.hp.com)





[www.hp.com/support/tango](http://www.hp.com/support/tango)

The Apple logo is a trademark of Apple Inc., registered in the U.S. and other countries.  
App Store is a service mark of Apple Inc.

Android, Google Play, and the Google Play logo are trademarks of Google Inc.  
Printed in English      Printed in French

© Copyright 2018 HP Development Company, L.P.



3DP64-90011