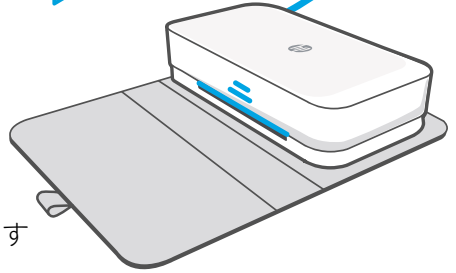




Tango X

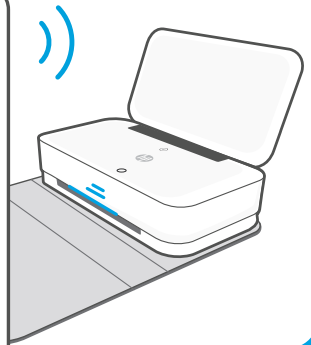
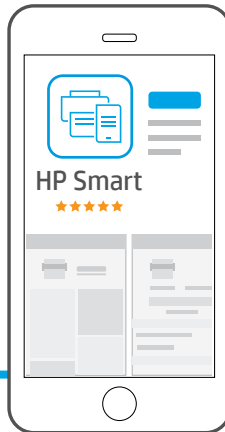


1

- EN Plug in to power on
- ZHTW 插入電源線並開啟電源
- JA プラグを差し込み、電源を入れます

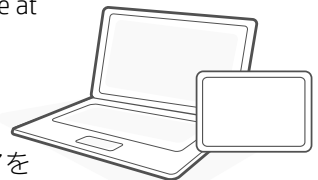
2

- EN HP Smart App **required** for setup
- ZHTW 設定時**需要** HP Smart 應用程式
- JA HP Smart アプリはセットアップに**必要**です



3

- EN After setup, print from more devices with software at 123.hp.com
- ZHTW 完成設定後，使用從 123.hp.com 取得的軟體，即可從更多裝置進行列印
- JA セットアップ後、123.hp.com のソフトウェアを使用して複数のデバイスから印刷します





www.hp.com/support/tango

The Apple logo is a trademark of Apple Inc., registered in the U.S. and other countries.
App Store is a service mark of Apple Inc.

Android, Google Play, and the Google Play logo are trademarks of Google Inc.
Printed in English

© Copyright 2018 HP Development Company, L.P.



3DP65-90023