



LaserJet Pro MFP M329, M428-M429



www.hp.com/support/ljM329MFP
www.hp.com/support/ljM428MFP
www.hp.com/support/ljM429MFP



www.register.hp.com



W1A28-90938

© Copyright 2018 HP Development Company, L.P.
www.hp.com

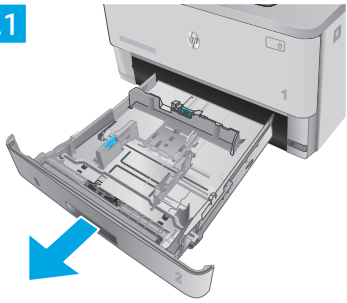
A series of icons illustrating the installation and operation requirements for the device. The icons include: an open box with an arrow pointing to the right; a document tray; a stack of documents; a power plug; a wrench and arrow; a fan with a slash through it; two thermometers with temperature ranges; three water droplets; a paper tray with an arrow; and a warning triangle with an exclamation mark.

17.5° - 25°C (63.5° - 77°F)	30% - 70%	110-127V 220-240V
--------------------------------	-----------	----------------------

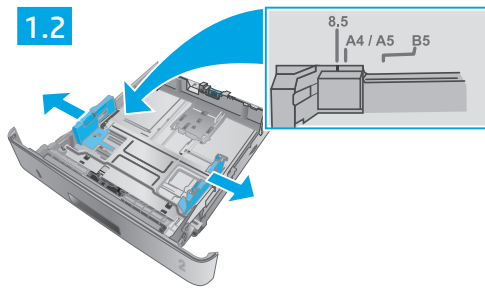
A diagram showing the dimensions and weight of the device. The dimensions are: 453 mm (17.8 in) width, 577 mm (22.7 in) height, and 839 mm (33 in) depth. The weight is 12.9 kg (28.4 lb). A person icon is shown below the weight for scale.

1

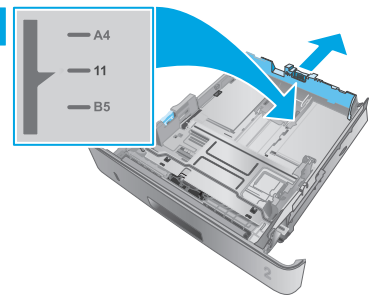
1.1



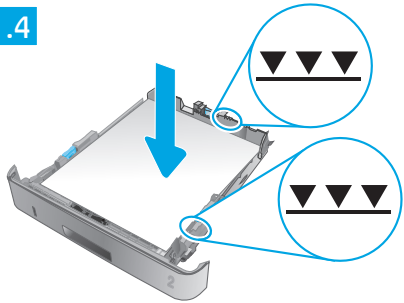
1.2



1.3



1.4

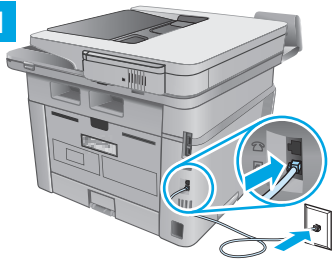


1.5

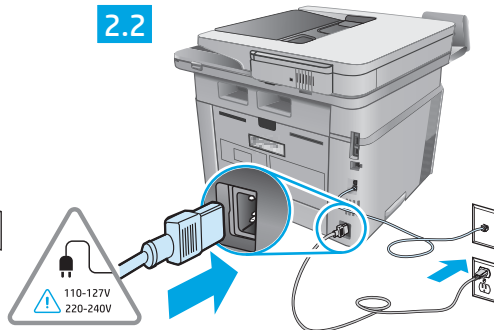


2

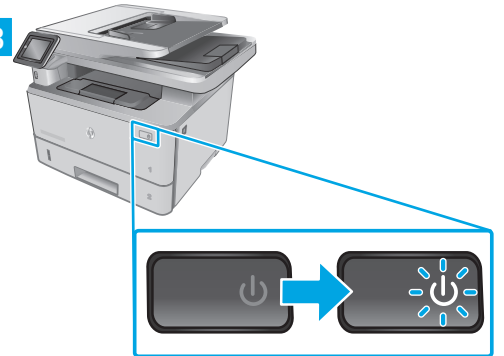
2.1



2.2



2.3



ZHCN 注意： 为防止损坏打印机，请仅使用打印机随附的电源线。

EN CAUTION: To prevent damage to the printer, use only the power cord that is provided with the printer.



ZHCN

- 3. 在控制面板上进行初始设置..... 4
- 4. 下载和安装软件 4
- 5. 移动打印（可选） 5
- 6. 设置传真（仅限传真型号 - 可选） 5
- 7. 使用扫描功能 6
- 故障排除 6

EN

- 3. Initial setup on the control panel 8
- 4. Download and install the software 8
- 5. Mobile printing (Optional) 9
- 6. Set up fax (fax models only - optional) 9
- 7. Use the scan feature 10
- Troubleshooting 10

注：必须有网络连接才可设置打印机和下载软件驱动程序。

❶ 常见问题解答

有关常见问题解答，请访问
www.hp.com/support/ljM428MFPFAQ 或扫描二维码。



3. 在控制面板上进行初始设置

开启打印机之后，等待其初始化。要在控制面板上导航，请使用轻触、轻扫和滚动手势。按控制面板上的提示配置以下这些设置：

- 语言
- 位置
- 打印机设置环境

选择以下某个选项：

- **自我管理**：为大多数用户优化的默认设置，其中包括引导式设置以及配置步骤和自动更新。
- **IT 管理**：为批量管理优化的默认设置。

初始设置之后，全部设置均可自定义。

4. 下载和安装软件

注：请勿连接USB电缆，直到接到提示。

🖨️ 方法 1：下载 HP Easy Start (Windows 和 Mac OS)

1. 访问 123.hp.com/laserjet，然后单击**下载**。
2. 按屏幕上的说明和提示将文件保存到计算机。
3. 从保存软件文件的文件夹中启动该文件。
4. 按照屏幕上的说明安装该软件。
5. 提示选择连接类型时，选择该连接类型的相应选项。

🖨️ 方法 2：从打印机支持网站下载 (Windows 和 Mac OS)

1. 访问 www.hp.com/support/ljM329MFP 或 www.hp.com/support/ljM428MFP 或 www.hp.com/support/ljM429MFP。
2. 选择**软件和驱动程序**。
3. 下载适用于您的打印机型号和操作系统的软件。
4. 从保存软件文件的文件夹中启动该文件。
5. 按照屏幕上的说明安装该软件。
6. 提示选择连接类型时，选择该连接类型的相应选项。

提示：📶 将产品连接至无线网络 (仅限无线型号)

1. 在打印机控制面板的主屏幕上，向下轻扫屏幕顶部的标签以打开仪表盘，然后轻触📶 (无线)。
2. 轻触⚙️ (设置)。
3. 轻触**无线设置**。
4. 轻触**无线设置向导**。
5. 按照屏幕说明完成设置。

❶ 手动配置 IP 地址

有关手动配置 IP 地址的信息，请参阅打印机用户指南。有关更多信息，请访问 www.hp.com/support/ljM329MFP 或 www.hp.com/support/ljM428MFP 或 www.hp.com/support/ljM429MFP。

5. 移动打印（可选）

方法 1: HP Smart

使用 HP Smart 应用程序进行设置、打印等等。



1. 扫描二维码或访问 123.hp.com。
2. 安装 HP Smart 应用程序。
3. 运行 HP Smart 应用程序，然后按屏幕上的说明进行连接、设置、打印等等。



方法 2: Wi-Fi Direct（仅限无线型号）


通过 Wi-Fi Direct，智能手机、平板电脑或计算机等支持 Wi-Fi 的设备可直接与打印机建立无线网络连接，而不必使用无线路由器或接入点。连接到打印机的 Wi-Fi Direct 信号与将支持 Wi-Fi 的设备连接到新的无线网络或热点的方式相同。

启用 Wi-Fi Direct

1. 在打印机控制面板的**主屏幕**上，向下轻扫屏幕顶部的标签以打开仪表盘，然后轻触  (Wi-Fi Direct)。
2. 轻触  (设置)。
3. 如果显示 Wi-Fi Direct 已关闭，则轻触 **Wi-Fi Direct** 以将其打开。

发现打印机

1. 从移动设备上开启 Wi-Fi，然后搜索无线网络。
2. 选择打印机控制面板上显示的打印机名称。

 有关无线打印和无线设置的详细信息，请访问 www.hp.com/go/wirelessprinting。

详细了解移动打印

本产品支持 AirPrint 和 Wi-Fi Direct。有关移动打印的详细信息，请扫描二维码或访问 www.hp.com/go/LaserJetMobilePrinting。



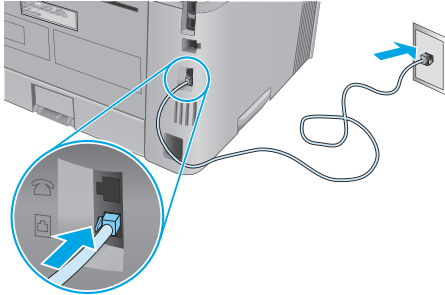
6. 设置传真（仅限传真型号 - 可选）

6.1 连接打印机

本打印机为模拟设备。HP 建议在专用模拟电话线路上使用本打印机。

注：部分国家/地区可能需要使用适配器才能连接本打印机随附的电话线。

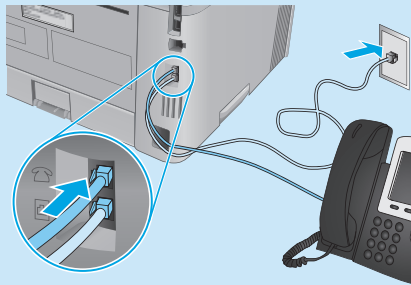
用打印机随附的电话线连接打印机上的传真端口与墙上的电话插孔。



❗ 如何连接电话应答机或电话分机？

1. 从电话端口上拔下插头。
2. 从电话插孔中拔下电话应答机的电话线，然后将这条电话线连接到打印机上的电话端口。

3. 用打印机随附的电话线连接打印机上的传真端口与墙上的电话插孔。



❗ 如何在数字电话环境下设置 HP 打印机？

HP 打印机专为使用传统模拟电话服务而设计。对于数字电话环境（如 DSL/ADSL、PBX、ISDN 或 VoIP），为打印机设置传真时可能需要使用数模滤波器或转换器。

注：根据电话公司的不同，打印机可能并非在所有数字环境下与所有数字服务线路或提供商兼容或与所有数模转换器兼容。请与电话公司联系以判断何种设置方式最佳。

注：在内外线电话振铃模式不同的 PBX 电话系统中设置振铃模式检测时，务必使用外线号码拨打打印机传真号以录制振铃模式。

6.2 配置打印机

必须配置传真时间、日期和标题设置才能使用传真功能。

要打开 HP 传真设置向导 (Windows)：

1. 在**开始**菜单中打开 HP Printer Assistant。
2. 在 HP Printer Assistant 中选择**传真**，然后选择**传真设置向导**。
3. 按照屏幕上的说明配置传真设置。

要设置传真日期/时间：

1. 在打印机控制面板的主屏幕上，向下轻扫屏幕顶部的标签以打开仪表盘。
2. 轻触 **设置** 按钮。
3. 轻触**首选项**。
4. 轻触**日期/时间**以设置传真日期和时间。

要设置或更改传真标题：

1. 在打印机控制面板屏幕上，轻触**传真**。
2. 轻触**设置**，然后轻触**首选项**。
3. 轻触**传真标题**。
4. 输入您的个人或公司名称，然后轻触**完成**。
5. 输入传真号，然后轻触**完成**。

注：传真号最多可包含 20 个字符。

注：传真标题最多可包含 25 个字符。

❗ 了解详细信息！

有关发送传真的其他方法，如安排以后发送传真或从计算机发送传真，请参阅网页上的《用户指南》：

- www.hp.com/support/ljM329MFP
- www.hp.com/support/ljM429MFP

7. 使用扫描功能

使用计算机上的 HP Scan 软件在打印机上开始进行扫描作业。

Windows

打开 HP Printer Assistant，依次选择**扫描**、**扫描文档或照片**。

Mac OS

转到**应用程序**文件夹，然后打开 HP Easy Scan。

故障排除

用户指南


《用户指南》中含有打印机使用和故障排除信息。可从 Web 下载：

1. 访问 www.hp.com/support/ijM329MFP 或 www.hp.com/support/ijM428MFP 或 www.hp.com/support/ijM429MFP。
2. 如果提示选择打印机，请照做，然后单击**用户指南**。

检查固件更新

1. 访问 www.hp.com/support/ijM329MFP 或 www.hp.com/support/ijM428MFP 或 www.hp.com/support/ijM429MFP。
2. 如果出现提示，请选择打印机，然后单击**软件和驱动程序**。
3. 选择操作系统，然后单击**下一步**按钮。
4. 选择**固件**，然后单击**下载**按钮。

控制面板帮助

轻触打印机控制面板上的“帮助”按钮以访问帮助主题。



其他支持资源

有关 HP 对打印机的全方位帮助，请访问 www.hp.com/support/ijM329MFP 或 www.hp.com/support/ijM428MFP 或 www.hp.com/support/ijM429MFP。

- 解决问题
- 查找高级配置说明
- 下载软件更新
- 加入支持论坛
- 查找保修和监管信息
- 访问移动打印资源

如需了解更多关于打印机的信息，请访问 www.hp.com/support/ijM428MFPFAQ 或扫描二维码。



NOTE: Internet connection is required to set up the printer and download the software driver.

FAQ

For frequently asked questions, go to www.hp.com/support/ljM428MFPFAQ or scan the QR code.



3. Initial setup on the control panel

After turning on the printer, wait for it to initialize. To navigate the control panel, use touch, swipe, and scroll gestures. Follow the prompts on the control panel to configure these settings:

- Language
- Location
- Printer Setup Environment

Select one of these options:

- **Self-managed:** Optimized default settings for most users that include guided setup and configuration steps and automatic updates.
- **IT-managed:** Optimized default settings for fleet manageability.

Settings are fully customizable after initial setup.

4. Download and install the software

NOTE: Do not connect the USB cable until you are prompted to do so.



Method 1: Download HP Easy Start (Windows and Mac OS)



1. Go to 123.hp.com/laserjet, and click **Download**.
2. Follow the onscreen instructions and prompts to save the file to the computer.
3. Launch the software file from the folder where the file was saved.
4. Follow the onscreen instructions to install the software.
5. When prompted to select a connection type, select the appropriate option for the type of connection.



Method 2: Download from printer support website (Windows and Mac OS)

1. Go to www.hp.com/support/ljM329MFP or www.hp.com/support/ljM428MFP or www.hp.com/support/ljM429MFP.
2. Select **Software and Drivers**.
3. Download the software for your printer model and operating system.
4. Launch the software file from the folder where the file was saved.
5. Follow the onscreen instructions to install the software.
6. When prompted to select a connection type, select the appropriate option for the type of connection.

Tips: Connect the printer to a wireless network (wireless models only)

1. From the Home screen on the printer control panel, swipe the tab at the top of the screen downward to open the Dashboard, and then touch  (Wireless).
2. Touch  (Setup).
3. Touch **Wireless Settings**.
4. Touch **Wireless Setup Wizard**.
5. Follow the display instructions to complete the setup.

Manually configure the IP address

See the printer user guide for information about configuring the IP address manually. For more information, go to www.hp.com/support/ljM329MFP or www.hp.com/support/ljM428MFP or www.hp.com/support/ljM429MFP.

5. Mobile printing (Optional)

Method 1: HP Smart

Use the HP Smart app to set up, print, and more.



1. Scan the QR code or go to 123.hp.com.
2. Install the HP Smart app.
3. Run the HP Smart app and follow the onscreen instructions to connect, set up, print, and more.



Method 2: Wi-Fi Direct (wireless models only)

Wi-Fi Direct allows Wi-Fi capable devices, such as smart phones, tablets, or computers, to make a wireless network connection directly to the printer without using a wireless router or access point. Connect to the printer's Wi-Fi Direct signal the same way Wi-Fi capable devices are connected to a new wireless network or hotspot.

Enable Wi-Fi Direct

1. From the **Home** screen on the printer control panel, swipe the tab at the top of the screen downward to open the Dashboard, and then touch  (**Wi-Fi Direct**).
2. Touch  (**Setup**).
3. If the display shows that Wi-Fi Direct is off, touch **Wi-Fi Direct** and then switch it on.

Discover the printer

1. From the mobile device, turn on the Wi-Fi, and search for wireless networks.
2. Select the printer name as it appears on the printer control panel.

 For more information on wireless printing and wireless setup, go to www.hp.com/go/wirelessprinting.

Learn more about mobile printing

The product supports AirPrint and Wi-Fi Direct. For more mobile printing information, scan the QR code or go to www.hp.com/go/LaserJetMobilePrinting.



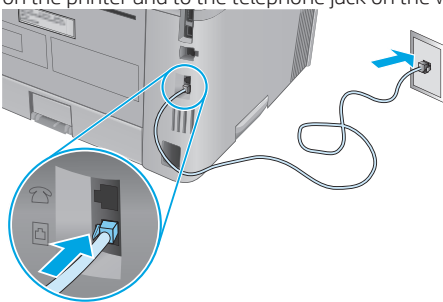
6. Set up fax (fax models only - optional)


6.1 Connect the printer

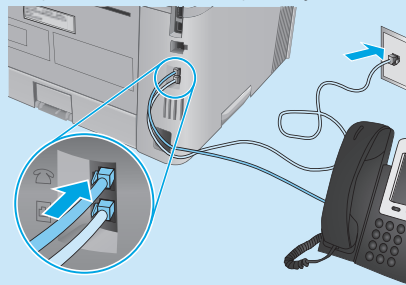
The printer is an analog device. HP recommends using the printer on a dedicated analog telephone line.

 **NOTE:** Some countries/regions might require an adapter for the phone cord that came with the printer.



Connect the phone cord that came with the printer to the Fax  port on the printer and to the telephone jack on the wall.



3. Connect the phone cord that came with the printer to the fax port  on the printer and to the telephone jack on the wall.



How do I connect an answering machine or extension phone?

1. Remove the plug from the phone port .
2. Disconnect the answering machine phone cord from the phone jack, and then connect it to the phone port  on the printer.

How do I set up HP printers in digital phone environments?

HP printers are designed specifically for use with traditional analog phone services. For a digital phone environment (such as DSL/ADSL, PBX, ISDN, or FoIP), digital-to-analog filters or converters might be necessary when setting up the printer for fax.

Note: Depending on the phone company, the printer might not be compatible with all digital service lines or providers, in all digital environments, or with all digital-to-analog converters. Contact the phone company to determine which setup options are best.

Note: When setting up ring pattern detection in a PBX phone system that has different ring patterns for internal and external calls, make sure to dial the printer fax number using an external number for recording the ring pattern.


6.2 Configure the printer

You must configure the fax time, date, and header settings to use the fax feature.

To open HP Fax Setup Wizard (Windows):

1. Open the HP Printer Assistant from **Start** menu.
2. In the HP Printer Assistant, select **Fax**, and then select **Fax Setup Wizard**.
3. Follow the onscreen instructions to configure the fax settings.

To set up fax date/time:

1. From the Home screen on the printer control panel, swipe the tab at the top of the screen downward to open the Dashboard.
2. Touch  (**Setup**) button.
3. Touch **Preferences**.
4. Touch **Date/time** to set up fax date and time.

To set or change the fax header:

1. From the printer control panel display, touch **Fax**.
2. Touch **Setup**, and then touch **Preferences**.
3. Touch **Fax Header**.
4. Enter your personal or company name, and then touch **Done**.
5. Enter you fax number, and then touch **Done**.

NOTE: The maximum number of characters for the fax number is 20.

NOTE: The maximum number of characters for the fax header is 25.

Learn more!

For more information about other ways to send faxes, such as scheduling a fax to be sent later or sending faxes from a computer, see the User Guide on the web:

- www.hp.com/support/ljM329MFP
- www.hp.com/support/ljM429MFP

7. Use the scan feature

Use the HP Scan software on your computer to start a scan job at the printer.

Windows

Open **HP Printer Assistant**, select **Scan**, and then select **Scan a Document** or **Photo**.

Mac OS

Go to the **Applications** folder and open **HP Easy Scan**.

Troubleshooting

User Guide

The User Guide includes printer usage and troubleshooting information. It is available on the Web:

1. Go to www.hp.com/support/ljM329MFP or www.hp.com/support/ljM428MFP or www.hp.com/support/ljM429MFP.
2. Select the printer if prompted to, and then click **User Guides**.

Check for firmware updates

1. Go to www.hp.com/support/ljM329MFP or www.hp.com/support/ljM428MFP or www.hp.com/support/ljM429MFP.
2. If prompted, select the printer, and then click **Software and Drivers**.
3. Select the operating system, and click the **Next** button.
4. Select **Firmware**, and click the **Download** button.

Control panel help

Touch the Help  button on the printer control panel to access help topics.

Additional support resources

For HP's all-inclusive help for the printer, go to www.hp.com/support/ljM329MFP or www.hp.com/support/ljM428MFP or www.hp.com/support/ljM429MFP.

- Solve problems
- Find advanced configuration instructions
- Download software updates
- Join support forums
- Find warranty and regulatory information
- Access mobile printing resources

To learn more about the printer, please go to www.hp.com/support/ljM428MFPEFAQ or scan the QR code.



未经事先书面许可，严禁进行任何形式的复制、改编或翻译，除非版权法另有规定。

此处包含的信息如有更改，恕不另行通知。

此类产品和服务附带的保修声明中明确规定了 HP 产品和服务的所有保修事项。不得将本文的任何内容视为构成附加保修。HP 不对本文档中的技术错误、编辑错误或遗漏承担责任。

商标说明

Windows® 是 Microsoft Corporation 在美国的注册商标。

Apple 和 Apple 徽标是 Apple Inc. 在美国和其它国家/地区的注册商标

Mac OS 是 Apple Inc. 在美国和其他国家/地区的注册商标。

AirPrint 是 Apple Inc. 在美国和其他国家/地区的注册商标。



Reproduction, adaptation or translation without prior written permission is prohibited, except as allowed under the copyright laws.

The information contained herein is subject to change without notice.

The only warranties for HP products and services are set forth in the express warranty statements accompanying such products and services. Nothing herein should be construed as constituting an additional warranty. HP shall not be liable for technical or editorial errors or omissions contained herein.

Trademark Credits

Windows® is a U.S. registered trademark of Microsoft Corporation.

Apple and the Apple logo are trademarks of Apple Inc., registered in the U.S. and other countries.

Mac OS is a trademark of Apple Inc., registered in the U.S. and other countries.

AirPrint is a trademark of Apple Inc., registered in the U.S. and other countries.

