



LaserJet Pro MFP M329, M428-M429



www.hp.com/support/ljM329MFP
www.hp.com/support/ljM428MFP
www.hp.com/support/ljM429MFP

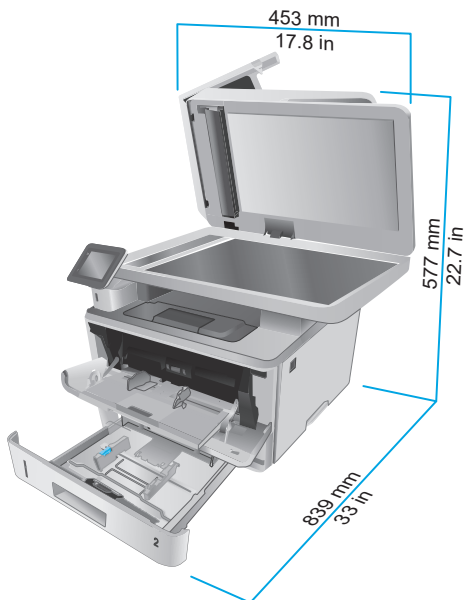
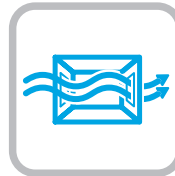
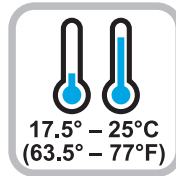
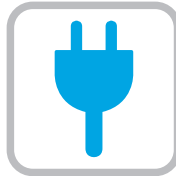
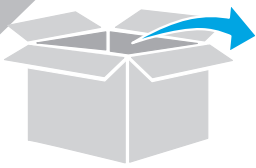


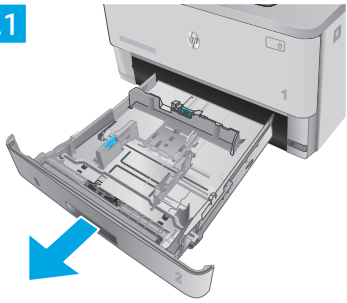
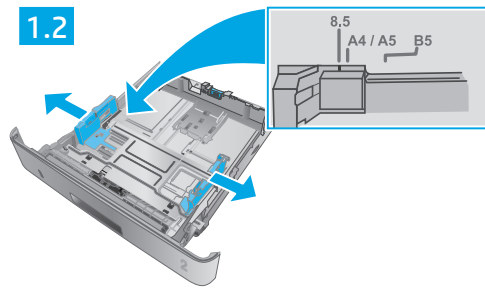
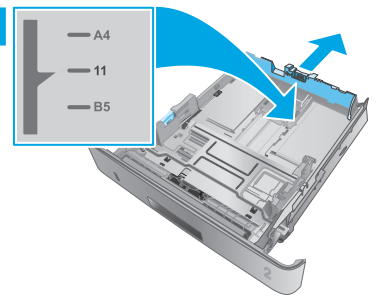
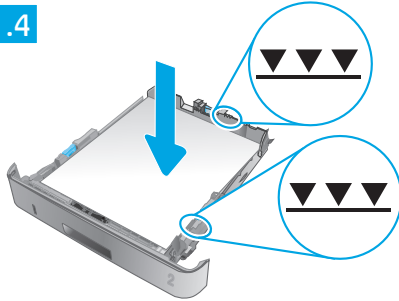
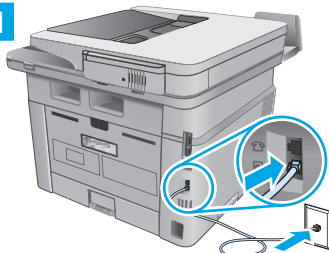
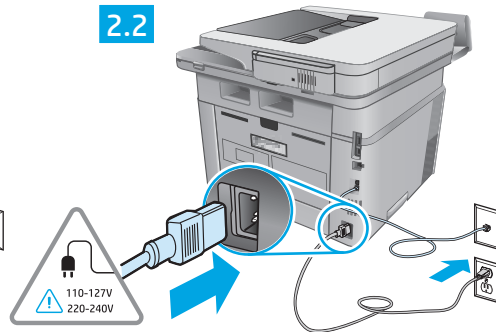
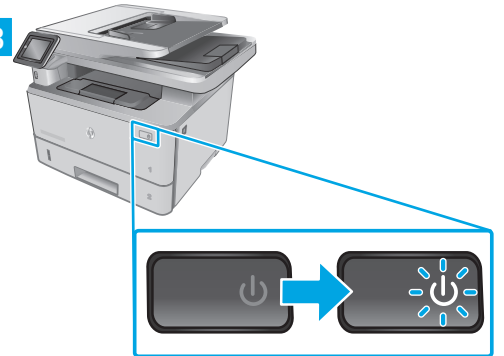
www.register.hp.com



W1A28-90930

© Copyright 2018 HP Development Company, L.P.
www.hp.com



1**1.1****1.2****1.3****1.4****1.5****2****2.1****2.2****2.3**

EN CAUTION: To prevent damage to the printer, use only the power cord that is provided with the printer.

ID PERHATIAN: Untuk mencegah kerusakan printer, gunakan hanya kabel daya yang disertakan bersama printer.

KO 주의: 프린터의 손상을 방지하려면 프린터와 함께 제공된 전원 코드만 사용하십시오.

TH ข้อควรระวัง: เพื่อป้องกันไม่ให้เครื่องพิมพ์เสียหาย โปรดใช้สายไฟที่มาพร้อมกับเครื่องพิมพ์เท่านั้น

ZHTW 注意: 為了避免對印表機造成損害，請僅使用印表機隨附的電源線。

VI CHÚ Ý: Để tránh làm hỏng máy in, chỉ sử dụng dây điện đi kèm máy in.



LaserJet Pro MFP M329, M428-M429 Getting Started Guide

English.....3

Bahasa Indonesia.....6

한국어9

ไทย 12

繁體中文..... 15

Tiếng Việt 18

NOTE: Internet connection is required to set up the printer and download the software driver.

FAQ

For frequently asked questions, go to www.hp.com/support/ljM428MFPFAQ or scan the QR code.



3. Initial setup on the control panel

After turning on the printer, wait for it to initialize. To navigate the control panel, use touch, swipe, and scroll gestures. Follow the prompts on the control panel to configure these settings:

- Language
- Location
- Printer Setup Environment

Select one of these options:

- **Self-managed:** Optimized default settings for most users that include guided setup and configuration steps and automatic updates.
- **IT-managed:** Optimized default settings for fleet manageability.

Settings are fully customizable after initial setup.

4. Download and install the software

NOTE: Do not connect the USB cable until you are prompted to do so.



Method 1: Download HP Easy Start (Windows and Mac OS)

1. Go to 123.hp.com/laserjet, and click **Download**.
2. Follow the onscreen instructions and prompts to save the file to the computer.
3. Launch the software file from the folder where the file was saved.
4. Follow the onscreen instructions to install the software.
5. When prompted to select a connection type, select the appropriate option for the type of connection.

Method 2: Download from printer support website (Windows and Mac OS)

1. Go to www.hp.com/support/ljM329MFP or www.hp.com/support/ljM428MFP or www.hp.com/support/ljM429MFP.
2. Select **Software and Drivers**.
3. Download the software for your printer model and operating system.
4. Launch the software file from the folder where the file was saved.
5. Follow the onscreen instructions to install the software.
6. When prompted to select a connection type, select the appropriate option for the type of connection.

Tips: Connect the printer to a wireless network (wireless models only)

1. From the Home screen on the printer control panel, swipe the tab at the top of the screen downward to open the Dashboard, and then touch  (Wireless).
2. Touch  (Setup).
3. Touch **Wireless Settings**.
4. Touch **Wireless Setup Wizard**.
5. Follow the display instructions to complete the setup.

Manually configure the IP address

See the printer user guide for information about configuring the IP address manually. For more information, go to www.hp.com/support/ljM329MFP or www.hp.com/support/ljM428MFP or www.hp.com/support/ljM429MFP.

5. Mobile printing (Optional)

Method 1: HP Smart

Use the HP Smart app to set up, print, and more.



1. Scan the QR code or go to 123.hp.com.
2. Install the HP Smart app.
3. Run the HP Smart app and follow the onscreen instructions to connect, set up, print, and more.



Method 2: Wi-Fi Direct (wireless models only)

Wi-Fi Direct allows Wi-Fi capable devices, such as smart phones, tablets, or computers, to make a wireless network connection directly to the printer without using a wireless router or access point. Connect to the printer's Wi-Fi Direct signal the same way Wi-Fi capable devices are connected to a new wireless network or hotspot.

Enable Wi-Fi Direct

1. From the **Home** screen on the printer control panel, swipe the tab at the top of the screen downward to open the Dashboard, and then touch  (**Wi-Fi Direct**).
2. Touch  (**Setup**).
3. If the display shows that Wi-Fi Direct is off, touch **Wi-Fi Direct** and then switch it on.

Discover the printer

1. From the mobile device, turn on the Wi-Fi, and search for wireless networks.
2. Select the printer name as it appears on the printer control panel.

 For more information on wireless printing and wireless setup, go to www.hp.com/go/wirelessprinting.

Learn more about mobile printing

The product supports AirPrint and Wi-Fi Direct. For more mobile printing information, scan the QR code or go to www.hp.com/go/LaserJetMobilePrinting.




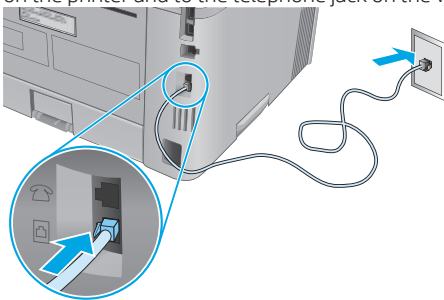
6. Set up fax (fax models only - optional)

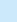
6.1 Connect the printer

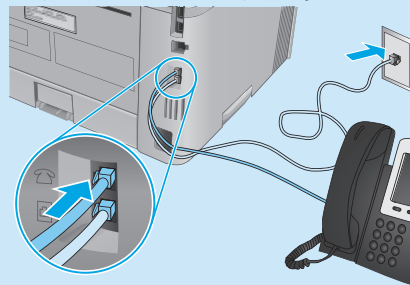
The printer is an analog device. HP recommends using the printer on a dedicated analog telephone line.

 **NOTE:** Some countries/regions might require an adapter for the phone cord that came with the printer.

Connect the phone cord that came with the printer to the Fax  port on the printer and to the telephone jack on the wall.



3. Connect the phone cord that came with the printer to the fax port  on the printer and to the telephone jack on the wall.




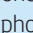
How do I set up HP printers in digital phone environments?

HP printers are designed specifically for use with traditional analog phone services. For a digital phone environment (such as DSL/ADSL, PBX, ISDN, or FoIP), digital-to-analog filters or converters might be necessary when setting up the printer for fax.

Note: Depending on the phone company, the printer might not be compatible with all digital service lines or providers, in all digital environments, or with all digital-to-analog converters. Contact the phone company to determine which setup options are best.

Note: When setting up ring pattern detection in a PBX phone system that has different ring patterns for internal and external calls, make sure to dial the printer fax number using an external number for recording the ring pattern.

How do I connect an answering machine or extension phone?

1. Remove the plug from the phone port .
2. Disconnect the answering machine phone cord from the phone jack, and then connect it to the phone port  on the printer.


6.2 Configure the printer

You must configure the fax time, date, and header settings to use the fax feature.

To open HP Fax Setup Wizard (Windows):

1. Open the HP Printer Assistant from **Start** menu.
2. In the HP Printer Assistant, select **Fax**, and then select **Fax Setup Wizard**.
3. Follow the onscreen instructions to configure the fax settings.

To set up fax date/time:

1. From the Home screen on the printer control panel, swipe the tab at the top of the screen downward to open the Dashboard.
2. Touch  (**Setup**) button.
3. Touch **Preferences**.
4. Touch **Date/time** to set up fax date and time.

To set or change the fax header:

1. From the printer control panel display, touch **Fax**.
2. Touch **Setup**, and then touch **Preferences**.
3. Touch **Fax Header**.
4. Enter your personal or company name, and then touch **Done**.
5. Enter you fax number, and then touch **Done**.

NOTE: The maximum number of characters for the fax number is 20.

NOTE: The maximum number of characters for the fax header is 25.

Learn more!

For more information about other ways to send faxes, such as scheduling a fax to be sent later or sending faxes from a computer, see the User Guide on the web:

- www.hp.com/support/ljM329MFP
- www.hp.com/support/ljM429MFP

7. Use the scan feature

Use the HP Scan software on your computer to start a scan job at the printer.

Windows

Open **HP Printer Assistant**, select **Scan**, and then select **Scan a Document** or **Photo**.

Mac OS

Go to the **Applications** folder and open **HP Easy Scan**.

Troubleshooting

User Guide

The User Guide includes printer usage and troubleshooting information. It is available on the Web:

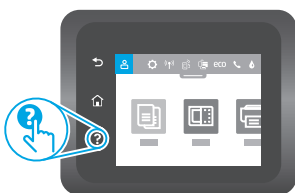
1. Go to www.hp.com/support/ljM329MFP or www.hp.com/support/ljM428MFP or www.hp.com/support/ljM429MFP.
2. Select the printer if prompted to, and then click **User Guides**.

Check for firmware updates

1. Go to www.hp.com/support/ljM329MFP or www.hp.com/support/ljM428MFP or www.hp.com/support/ljM429MFP.
2. If prompted, select the printer, and then click **Software and Drivers**.
3. Select the operating system, and click the **Next** button.
4. Select **Firmware**, and click the **Download** button.

Control panel help

Touch the Help  button on the printer control panel to access help topics.



Additional support resources

For HP's all-inclusive help for the printer, go to www.hp.com/support/ljM329MFP or www.hp.com/support/ljM428MFP or www.hp.com/support/ljM429MFP.

- Solve problems
- Find advanced configuration instructions
- Download software updates
- Join support forums
- Find warranty and regulatory information
- Access mobile printing resources

To learn more about the printer, please go to www.hp.com/support/ljM428MFPFAQ or scan the QR code.



English.....3

Bahasa Indonesia.....6

한국어.....9

ไทย.....12

繁體中文.....15

Tiếng Việt.....18



LaserJet Pro MFP M329, M428-M429

Panduan Persiapan

CATATAN: Diperlukan koneksi internet untuk menyiapkan printer dan mendownload driver perangkat lunak.

i Pertanyaan Umum

Untuk pertanyaan umum, kunjungi www.hp.com/support/ljM428MFPFAQ atau pindai kode QR.



3. Konfigurasi awal pada panel kontrol

Setelah menghidupkan printer, tunggu proses inisialisasi. Untuk menelusuri panel kontrol, gunakan gerakan sentuh, geser, dan gulir. Ikuti perintah pada panel kontrol untuk mengonfigurasi pengaturan berikut:

- Bahasa
- Lokasi
- Lingkungan Penyiapan Printer

Pilih salah satu opsi ini:

- **Dikelola sendiri:** Pengaturan default yang dioptimalkan untuk sebagian besar pengguna mencakup langkah-langkah pengaturan dan konfigurasi terpandu, serta pembaruan otomatis.
- **Dikelola TI:** Pengaturan default yang dioptimalkan untuk kemampuan pengelolaan cepat.

Pengaturan dapat disesuaikan sepenuhnya setelah konfigurasi awal.

4. Mendownload dan menginstal perangkat lunak

CATATAN: Jangan sambungkan kabel USB hingga diminta untuk melakukannya.



Metode 1: Download HP Easy Start (Windows dan Mac OS)

1. Kunjungi 123.hp.com/laserjet, dan klik **Download**.
2. Ikuti instruksi di layar dan perintah untuk menyimpan file di komputer.
3. Jalankan file perangkat lunak dari folder tempat menyimpan file.
4. Ikuti petunjuk di layar untuk menginstal perangkat lunak.
5. Bila diminta untuk memilih jenis sambungan, gunakan pilihan yang tepat untuk jenis sambungan.

Metode 2: Download dari situs web dukungan printer (Windows dan Mac OS)

1. Kunjungi www.hp.com/support/ljM329MFP atau www.hp.com/support/ljM428MFP atau www.hp.com/support/ljM429MFP.
2. Pilih **Software and Drivers** (Perangkat Lunak dan Driver).
3. Download perangkat lunak untuk model printer dan sistem operasi Anda.
4. Jalankan file perangkat lunak dari folder tempat menyimpan file.
5. Ikuti petunjuk di layar untuk menginstal perangkat lunak.
6. Bila diminta untuk memilih jenis sambungan, gunakan pilihan yang tepat untuk jenis sambungan.

Tips: Menghubungkan printer ke jaringan nirkabel (hanya model nirkabel)

1. Dari layar Awal di panel kontrol printer, geser tab di bagian atas layar ke bawah untuk membuka Dasbor, lalu sentuh  (**Wireless**) (Nirkabel).
2. Sentuh  (**Setup**) (Pengaturan).
3. Sentuh **Wireless Settings** (Pengaturan Nirkabel).
4. Sentuh **Wireless Setup Wizard** (Wizard Konfigurasi Nirkabel).
5. Ikuti petunjuk di tampilan untuk menyelesaikan pengaturan.

i Mengonfigurasi alamat IP secara manual

Lihat panduan pengguna printer untuk informasi tentang mengonfigurasi alamat IP secara manual. Untuk informasi lebih lanjut, kunjungi www.hp.com/support/ljM329MFP atau www.hp.com/support/ljM428MFP atau www.hp.com/support/ljM429MFP.

5. Pencetakan seluler (Opsional)

Metode 1: HP Smart

Gunakan aplikasi HP Smart untuk mengonfigurasi, mencetak, dan lainnya.



1. Pindai kode QR atau kunjungi 123.hp.com.
2. Instal aplikasi HP Smart.
3. Jalankan aplikasi HP Smart dan ikuti petunjuk di layar untuk menyambungkan, mengonfigurasi, mencetak, dan lainnya.



Metode 2: Wi-Fi Direct (hanya model nirkabel)


Wi-Fi Direct memungkinkan perangkat yang mendukung Wi-Fi, misalnya smartphone, tablet, atau komputer, membuat sambungan jaringan nirkabel langsung ke printer tanpa menggunakan router atau jalur akses nirkabel. Sambungkan ke sinyal Wi-Fi Direct printer menggunakan cara yang sama seperti menyambungkan perangkat yang mendukung Wi-Fi ke jaringan nirkabel atau hotspot baru.

Mengaktifkan Wi-Fi Direct

1. Dari layar **Home** (Awal) di panel kontrol printer, geser tab di bagian atas layar ke bawah untuk membuka Dasbor, lalu sentuh  (**Wi-Fi Direct**).
2. Sentuh  (**Setup**) (Pengaturan).
3. Jika tampilan menampilkan bahwa Wi-Fi Direct mati, sentuh **Wi-Fi Direct** lalu nyalakan.

Menemukan printer

1. Dari perangkat seluler, aktifkan Wi-Fi, lalu cari jaringan nirkabel.
2. Pilih nama printer yang ditunjukkan pada panel kontrol printer.

 Untuk informasi lebih lanjut tentang pencetakan nirkabel dan pengaturan nirkabel, kunjungi www.hp.com/go/wirelessprinting.

Selengkapnya tentang pencetakan seluler


Produk ini mendukung AirPrint dan Wi-Fi Direct. Untuk informasi lebih lanjut tentang pencetakan seluler, pindai kode QR atau kunjungi www.hp.com/go/LaserJetMobilePrinting.




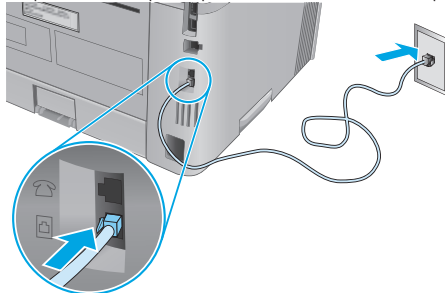
6. Mengonfigurasi fax (hanya model fax - opsional)

6.1 Menyambungkan printer


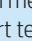
Printer ini adalah perangkat analog. HP menganjurkan penggunaan printer pada saluran telepon analog khusus.


 **CATATAN:** Adapter mungkin diperlukan di beberapa negara/kawasan untuk menggunakan kabel telepon yang disertakan bersama printer.

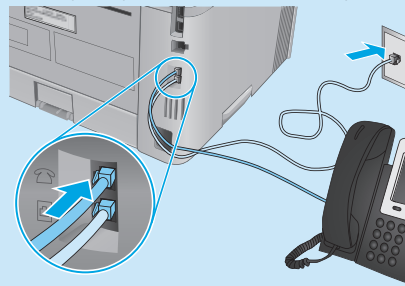
Sambungkan kabel telepon yang disertakan bersama printer ke port Faks  pada printer dan ke soket telepon di dinding.



Bagaimana menyambungkan mesin penjawab atau telepon ekstensi?

1. Lepas konektor dari port telepon .
2. Lepas sambungan kabel telepon mesin penjawab dari soket telepon, lalu sambungkan ke port telepon  pada printer.

3. Sambungkan kabel telepon yang disertakan bersama printer ke port faks  pada printer dan ke soket telepon di dinding.



Bagaimana cara mengonfigurasi printer HP dalam lingkungan telepon digital?

Printer HP dirancang khusus untuk digunakan bersama layanan telepon analog biasa. Untuk lingkungan telepon digital (misalnya, DSL/ADSL, PBX, ISDN, atau FoIP), filter atau konverter digital ke analog mungkin diperlukan bila mengonfigurasi printer untuk faks.

Catatan: Berdasarkan perusahaan telepon, printer mungkin tidak kompatibel dengan semua saluran atau penyedia layanan digital, di semua lingkungan digital, atau dengan semua konverter digital ke analog. Hubungi perusahaan telepon untuk menentukan pilihan konfigurasi terbaik.

Catatan: Saat mengonfigurasi deteksi pola dering dalam sistem telepon PBX yang memiliki pola dering berbeda untuk panggilan internal dan eksternal, pastikan Anda menekan nomor faks printer menggunakan nomor eksternal untuk merekam pola dering.


6.2 Mengonfigurasi printer

Mengonfigurasi pengaturan waktu, tanggal, dan kepala faks diperlukan agar dapat menggunakan fitur faks.

Membuka Wizard Konfigurasi Faks HP (Windows):

1. Buka HP Printer Assistant dari menu **Start** (Mulai).
2. Pada HP Printer Assistant, pilih **Fax** (Faks), lalu pilih **Fax Setup Wizard** (Wizard Konfigurasi Faks).
3. Ikuti petunjuk di layar untuk mengonfigurasi pengaturan faks.

Mengatur tanggal/waktu faks:

1. Dari layar Awal di panel kontrol printer, geser tab di bagian atas layar ke bawah untuk membuka Dasbor.
2. Sentuh tombol  (**Setup**) (Pengaturan).
3. Sentuh **Preferences** (Preferensi).
4. Sentuh **Date/time** (Tanggal/waktu) untuk mengatur tanggal dan waktu faks.

Untuk mengatur atau mengubah kepala faks:

1. Dari tampilan panel kontrol printer, sentuh **Fax** (Faks).
2. Sentuh **Setup** (Pengaturan), lalu sentuh **Preferences** (Preferensi).
3. Sentuh **Fax Header** (Kepala Faks).
4. Masukkan nama pribadi atau perusahaan, lalu sentuh **Done** (Selesai).
5. Masukkan nomor faks, lalu sentuh **Done** (Selesai).

CATATAN: Jumlah maksimal karakter untuk nomor faks adalah 20.

CATATAN: Jumlah maksimal karakter untuk kepala faks adalah 25.

Selengkapnya!

Untuk informasi lebih lanjut tentang cara lain mengirim faks, misalnya menjadwalkan faks untuk dikirim nanti atau mengirim faks dari komputer, lihat Panduan Pengguna di web:

- www.hp.com/support/ljM329MFP
- www.hp.com/support/ljM429MFP

7. Menggunakan fitur pindai

Gunakan perangkat lunak HP Scan di komputer untuk memulai tugas pindai pada printer.

Windows

Buka **HP Printer Assistant**, pilih **Scan** (Pindai), lalu pilih **Scan a Document or Photo** (Pindai Dokumen atau Foto).

Mac OS

Buka folder **Applications** (Aplikasi) dan buka **HP Easy Scan**.

Mengatasi masalah

Panduan Pengguna


Panduan Pengguna mencakup informasi tentang penggunaan dan cara mengatasi masalah printer. Informasi ini tersedia di Web:

1. Kunjungi www.hp.com/support/ljM329MFP atau www.hp.com/support/ljM428MFP atau www.hp.com/support/ljM429MFP.
2. Pilih printer jika diminta, lalu klik **User Guides** (Panduan Pengguna).

Memeriksa pembaruan firmware

1. Kunjungi www.hp.com/support/ljM329MFP atau www.hp.com/support/ljM428MFP atau www.hp.com/support/ljM429MFP.
2. Jika diminta, pilih printer, lalu klik **Software and Drivers** (Perangkat Lunak dan Driver).
3. Pilih sistem operasi, lalu klik tombol **Next** (Berikutnya).
4. Pilih Firmware, lalu klik tombol **Download**.

Bantuan panel kontrol

Sentuh tombol Help (Bantuan)  pada panel kontrol printer untuk mengakses topik bantuan.



Sumber dukungan tambahan

Untuk bantuan lengkap dari HP terkait printer, kunjungi www.hp.com/support/ljM329MFP atau www.hp.com/support/ljM428MFP atau www.hp.com/support/ljM429MFP.

- Mengatasi masalah
- Menemukan petunjuk konfigurasi tingkat lanjut
- Mendownload pembaruan perangkat lunak
- Mengikuti forum dukungan
- Mencari informasi jaminan dan peraturan
- Mengakses sumber pencetakan seluler

Untuk mengetahui lebih lanjut tentang printer, kunjungi www.hp.com/support/ljM428MFPFAQ atau pindai kode QR.





LaserJet Pro MFP M329, M428-M429

시작 설명서

English.....3

Bahasa Indonesia.....6

한국어.....9

ไทย.....12

繁體中文.....15

Tiếng Việt.....18

참고: 프린터를 설치하고 소프트웨어 드라이버를 다운로드하려면 인터넷을 연결해야 합니다.

FAQ

자주 묻는 질문은 www.hp.com/support/ljM428MFPFAQ에서 확인하거나 QR 코드를 스캔하십시오.



3. 제어판에서 초기 설정

프린터를 켜 후 초기화될 때까지 기다립니다. 제어판을 탐색하려면 터치, 스와이프, 스크롤 제스처를 사용합니다. 제어판에 표시되는 메시지에 따라 다음과 같은 설정을 구성합니다.

- 언어
- 위치
- 프린터 설치 환경

다음 옵션 중 하나를 선택합니다.

- **자가 관리:** 설정 안내와 구성 단계 및 자동 업데이트를 포함하여 대부분의 사용자에게 최적화된 기본 설정입니다.
- **IT 관리:** 장비 관리성에 최적화된 기본 설정입니다.

설정 은 초기 설정 후 모두 사용자 요구에 맞게 설정할 수 있습니다.

4. 소프트웨어 다운로드 및 설치

참고: 알림이 표시되기 전까지는 USB 케이블을 연결하지 마십시오.

방법 1: HP Easy Start 다운로드(Windows 및 Mac OS)

1. 123.hp.com/laserjet으로 이동한 다음 **다운로드**를 클릭합니다.
2. 화면의 안내와 알림에 따라 컴퓨터에 파일을 저장합니다.
3. 파일이 저장된 폴더에서 소프트웨어 파일을 실행합니다.
4. 화면의 지시에 따라 소프트웨어를 설치합니다.
5. 연결 유형을 선택하라는 메시지가 표시되면 연결 유형에 적합한 옵션을 선택합니다.

방법 2: 프린터 지원 웹사이트에서 다운로드(Windows 및 Mac OS)

1. www.hp.com/support/ljM329MFP 또는 www.hp.com/support/ljM428MFP 또는 www.hp.com/support/ljM429MFP로 이동합니다.
2. **소프트웨어 및 드라이버**를 선택합니다.
3. 해당 프린터 모델 및 운영 체제용 소프트웨어를 다운로드합니다.
4. 파일이 저장된 폴더에서 소프트웨어 파일을 실행합니다.
5. 화면의 지시에 따라 소프트웨어를 설치합니다.
6. 연결 유형을 선택하라는 메시지가 표시되면 연결 유형에 적합한 옵션을 선택합니다.

팁: 무선 네트워크에 프린터 연결(무선 모델만 해당)

1. 프린터 제어판의 홈 화면에서 화면 상단에 있는 탭을 아래로 밀어 대시보드를 연 다음 **(무선)**을 누릅니다.
2. **(설정)**을 누릅니다.
3. **무선 설정**을 누릅니다.
4. **무선 설정 마법사**를 누릅니다.
5. 디스플레이의 설명에 따라 스캔을 완료합니다.

IP 주소 수동으로 구성

수동 IP 주소 구성에 대한 자세한 내용은 프린터 사용 설명서를 참조하십시오. 자세한 내용은 www.hp.com/support/ljM329MFP 또는 www.hp.com/support/ljM428MFP 또는 www.hp.com/support/ljM429MFP로 이동합니다.

5. 모바일 인쇄(선택 사항)

방법 1: HP Smart

HP Smart 앱을 사용하여 연결, 설정 및 인쇄 등을 실시합니다.



1. QR 코드를 스캔하거나 123.hp.com으로 이동합니다.
2. HP Smart 앱을 설치합니다.
3. HP Smart 앱을 실행하여 화면에 표시되는 안내에 따라 연결, 설정 및 인쇄 등을 실시합니다.



방법 2: Wi-Fi Direct(무선 모델만 해당)

Wi-Fi Direct를 통해 스마트폰, 태블릿, 컴퓨터와 같은 Wi-Fi 케이블 장치를 무선 라우터나 액세스 지점을 사용하지 않고 직접 프린터에 무선 네트워크 연결을 할 수 있습니다. Wi-Fi를 사용할 수 있는 장치를 새 무선 네트워크 또는 핫스팟에 연결하는 방식과 동일한 방법으로 프린터의 Wi-Fi Direct 신호에 연결합니다.

Wi-Fi Direct 활성화

1. 프린터 제어판의 홈 화면에서 화면 상단에 있는 탭을 아래로 밀어 대시보드를 연 다음  (무선)을 누릅니다.
2.  (설정)을 누릅니다.
3. 디스플레이에 Wi-Fi Direct가 꺼진 것으로 표시되면, **Wi-Fi Direct**를 누른 다음 켭니다.

프린터 찾기

1. 모바일 장치에서 Wi-Fi를 켜고 무선 네트워크를 검색합니다.
2. 프린터 제어판에 표시되는 프린터 이름을 선택합니다.

 무선 인쇄 및 무선 설정에 대한 자세한 내용은 www.hp.com/go/wirelessprinting으로 이동합니다.

모바일 인쇄에 대해 자세히 알아보기


제품은 AirPrint 및 Wi-Fi Direct를 지원합니다. 추가 모바일 인쇄 정보는 QR 코드를 스캔하거나 www.hp.com/go/LaserJetMobilePrinting으로 이동합니다.

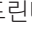


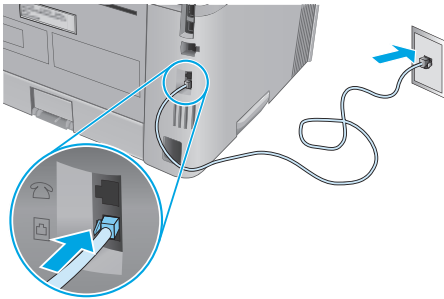
6. 팩스 설정(팩스 모델만 해당 - 선택 사항)

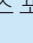
6.1 프린터 연결

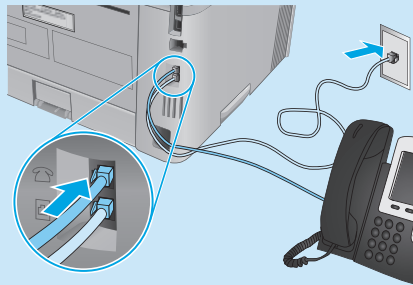
이 프린터는 아날로그 장치입니다. HP는 전용 아날로그 전화선에서 이 프린터를 사용하는 것이 좋습니다.

 **참고:** 일부 국가/지역에서는 프린터와 함께 제공된 전화 코드에 대한 어댑터가 필요할 수 있습니다.

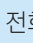
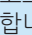
프린터와 함께 제공된 전화 코드를 프린터의 팩스 포트  포트와 벽면의 전화 잭에 연결합니다.



3. 프린터와 함께 제공된 전화 코드를 프린터의 팩스 포트 와 벽면의 전화 잭에 연결합니다.



자동 응답기나 내선 전화는 어떻게 연결하나요?

1. 전화 포트 에서 플러그를 제거합니다.
2. 전화 잭에서 자동 응답기 전화 코드를 분리한 다음 프린터의 전화 포트 에 연결합니다.

디지털 전화기 환경에서는 HP 프린터를 어떻게 설정하나요?

HP 프린터는 기존 아날로그 전화 서비스와 함께 사용할 수 있도록 개발되었습니다. 디지털 전화기 환경(예: DSL/ADSL, PBX, ISDN, 또는 FoIP 등)의 경우 팩스용 프린터를 설치할 때 디지털-아날로그 필터 또는 변환기가 필요할 수 있습니다.

참고: 통신 업체에 따라 프린터가 모든 디지털 서비스 회선이나 제공 업체, 모든 디지털 환경 또는 모든 디지털-아날로그 변환기와 호환되지 않을 수 있습니다. 가장 적합한 설치 옵션을 확인하려면 통신 업체에 문의하십시오.

참고: 내선 및 외선 통화에 대해 다른 벨소리 종류를 가진 PBX 전화 시스템에 벨소리 종류 감지 기능을 설정할 때 외부 번호를 사용하여 프린터 팩스 번호로 전화를 걸어 벨소리 종류를 기록하십시오.


6.2 프린터 구성

팩스 기능을 사용하려면 팩스 시간, 날짜 및 머리글 설정을 구성해야 합니다.

HP 팩스 설정 마법사 사용(Windows)

1. **시작** 메뉴에서 HP Printer Assistant를 엽니다.
2. HP 프린터 길잡이에서 **팩스**를 누른 다음 **팩스 설정 마법사**를 선택합니다.
3. 화면의 지침을 따라 팩스 설정을 구성합니다.

팩스 날짜/시간 설정 방법:

1. 프린터 제어판의 홈 화면에서 화면 상단에 있는 탭을 아래로 밀어 대시보드를 엽니다.
2.  **(설치)** 버튼을 누릅니다.
3. **기본 설정**을 누릅니다.
4. **날짜/시간**을 눌러 팩스 날짜 및 시간을 설정합니다.

팩스 머리글 설정 또는 변경 방법:

1. 프린터 제어판 디스플레이에서 **팩스**를 누릅니다.
2. **팩스 설정, 기본 설정**을 차례로 누릅니다.
3. **팩스 머리글**을 누릅니다.
4. 개인 또는 회사 이름을 입력한 다음 **완료**를 누릅니다.
5. 팩스 번호를 입력한 다음 **완료**를 누릅니다.

참고: 팩스 번호로 최대 20자를 사용할 수 있습니다.

참고: 팩스 머리글로 최대 25자를 사용할 수 있습니다.

❗ 자세히 알아보기!

나중에 보내도록 팩스를 예약하거나 컴퓨터에서 팩스 보내기 등 팩스를 보내는 다양한 방법에 대한 자세한 내용은 웹에서 사용 설명서를 참조하십시오.

- www.hp.com/support/ijM329MFP
- www.hp.com/support/ijM429MFP

7. < 스캔 기능 사용

프린터에서 스캔 작업을 시작하려면 컴퓨터의 HP Scan 소프트웨어를 사용하십시오.

Windows

HP 프린터 길잡이에서 **스캔**을 선택한 다음 **문서** 또는 **사진 스캔**을 선택합니다.

Mac OS

Applications 폴더로 이동한 다음 **HP Easy Scan**을 엽니다.

문제 해결

사용 설명서

사용 설명서에 프린터 사용법 및 문제 해결 정보가 포함되어 있습니다. 웹에서 사용할 수 있습니다:

1. www.hp.com/support/ijM329MFP 또는 www.hp.com/support/ijM428MFP 또는 www.hp.com/support/ijM429MFP로 이동합니다.
2. 메시지가 표시되면 프린터를 선택하고 **사용 설명서**를 클릭합니다.

펌웨어 업데이트 확인

1. www.hp.com/support/ijM329MFP 또는 www.hp.com/support/ijM428MFP 또는 www.hp.com/support/ijM429MFP로 이동합니다.
2. 프롬프트되면, 프린터를 선택한 다음 **소프트웨어 및 드라이버**를 클릭합니다.
3. 운영 체제를 선택하고 **다음** 버튼을 클릭합니다.
4. **펌웨어**를 선택하고 **다운로드** 버튼을 클릭합니다.

제어판 도움말

도움말을 보려면 프린트 제어판의 **도움말 ?** 버튼을 누르십시오.

추가 지원 리소스

프린터에 대한 모든 것을 포함하는 HP 도움말은 www.hp.com/support/ijM329MFP 또는 www.hp.com/support/ijM428MFP 또는 www.hp.com/support/ijM429MFP로 이동합니다.

- 문제 해결
- 고급 구성 지침 찾기
- 소프트웨어 업데이트 다운로드
- 지원 포럼 가입
- 보증 및 규정 정보 찾기
- 모바일 인쇄 리소스 액세스

프린터에 대한 자세한 내용을 알아보려면, www.hp.com/support/ijM428MFPFAQ 또는 QR 코드를 스캔합니다.



English.....3

Bahasa Indonesia.....6

한국어.....9

ไทย.....12

繁體中文.....15

Tiếng Việt.....18



LaserJet Pro MFP M329, M428-M429

คู่มือเริ่มต้นใช้งาน

หมายเหตุ: การตั้งค่าเครื่องพิมพ์และการดาวน์โหลดซอฟต์แวร์ไดรเวอร์ต้องใช้การเชื่อมต่ออินเทอร์เน็ต

คำถามที่พบบ่อย

หากต้องการดูคำถามที่พบบ่อย ให้ไปที่ www.hp.com/support/ljm428MEPFAQ หรือสแกนรหัส QR นี้



3. การตั้งค่าครั้งแรกบนแผงควบคุม

หลังจากเปิดเครื่องพิมพ์แล้วให้รอจนกว่าระบบจะเริ่มขึ้น หากต้องการนำทางโดยใช้แผงควบคุม ให้ใช้ทำทางการแตะ กวาด และเลื่อน ดำเนินการตามพรมต้นบนแผงควบคุมเพื่อกำหนดการตั้งค่าดังต่อไปนี้

- ภาษา
- ตำแหน่ง
- สภาพแวดล้อมการตั้งค่าเครื่องพิมพ์

เลือกหนึ่งในตัวเลือกต่อไปนี้

- **จัดการด้วยตนเอง:** การตั้งค่าเริ่มต้นที่มีประสิทธิภาพสำหรับผู้ใช้ส่วนใหญ่ โดยมีขั้นตอนการตั้งค่าและการกำหนดค่าแบบมีคำแนะนำ และการอัปเดตอัตโนมัติ
- **จัดการโดย IT:** การตั้งค่าเริ่มต้นที่ปรับให้เหมาะสม เพื่อความสามารถทางจัดการที่รวดเร็ว

สามารถปรับแต่งการตั้งค่าทั้งหมดได้ หลังการตั้งค่าในครั้งแรกแล้ว

4. ดาวน์โหลดและติดตั้งซอฟต์แวร์

หมายเหตุ: อย่าเพิ่งต่อสาย USB จนกว่าโปรแกรมการติดตั้งจะพร้อมให้ต่อ

วิธีที่ 1: ดาวน์โหลด HP Easy Start (Windows และ Mac OS)

1. ไปที่ 123.hp.com/laserjet และคลิก **Download** (ดาวน์โหลด)
2. ทำตามคำแนะนำบนหน้าจอและพรมต เพื่อบันทึกไฟล์ในคอมพิวเตอร์
3. เปิดไฟล์ซอฟต์แวร์จากโฟลเดอร์ที่บันทึกไฟล์ไว้
4. ทำตามคำแนะนำบนหน้าจอเพื่อติดตั้งซอฟต์แวร์
5. เมื่อพรมตให้เลือกประเภทของการเชื่อมต่อ โปรดเลือกตัวเลือกที่เหมาะสมสำหรับประเภทของการเชื่อมต่อ

วิธีที่ 2: ดาวน์โหลดจากเว็บไซต์การสนับสนุนเครื่องพิมพ์ (Windows และ Mac OS)

1. ไปที่ www.hp.com/support/ljm329MEP หรือ www.hp.com/support/ljm428MEP หรือ www.hp.com/support/ljm429MEP
2. เลือก **Software and Drivers** (ซอฟต์แวร์และไดรเวอร์)
3. ดาวน์โหลดซอฟต์แวร์สำหรับรุ่นเครื่องพิมพ์และระบบปฏิบัติการของคุณ
4. เปิดไฟล์ซอฟต์แวร์จากโฟลเดอร์ที่บันทึกไฟล์ไว้
5. ทำตามคำแนะนำบนหน้าจอเพื่อติดตั้งซอฟต์แวร์
6. เมื่อพรมตให้เลือกประเภทของการเชื่อมต่อ โปรดเลือกตัวเลือกที่เหมาะสมสำหรับประเภทของการเชื่อมต่อ

คำแนะนำ: (๑) เชื่อมต่อผลิตภัณฑ์เข้ากับเครือข่ายแบบไร้สาย (เฉพาะรุ่นไร้สายเท่านั้น)

1. บนหน้าจอหลักในแผงควบคุมเครื่องพิมพ์ ให้เลื่อนแท็บที่ด้านบนหน้าจอลงเพื่อเปิดแดชบอร์ด แล้วแตะ (๑) (ไร้สาย)
2. แตะ (การตั้งค่า)
3. แตะ **การตั้งค่าไร้สาย**
4. แตะ **ตัวช่วยตั้งค่าไร้สาย**
5. ทำตามคำแนะนำเพื่อติดตั้งจนเสร็จ

กำหนดค่า IP แอดเดรสด้วยตนเอง

คู่มือผู้ใช้เครื่องพิมพ์ เพื่อศึกษาข้อมูลเกี่ยวกับวิธีกำหนดค่า IP แอดเดรสด้วยตนเอง สำหรับข้อมูลเพิ่มเติม โปรดไปที่ www.hp.com/support/ljm329MEP หรือ www.hp.com/support/ljm428MEP หรือ www.hp.com/support/ljm429MEP

5. การพิมพ์ผ่านอุปกรณ์เคลื่อนที่ (ไม่จำเป็น)

วิธีที่ 1: HP Smart

ใช้แอป HP Smart เพื่อตั้งค่า พิมพ์ และอื่นๆ

1. สแกนรหัส QR นี้หรือไปที่ 123.hp.com
2. ติดตั้งแอป HP Smart
3. เรียกใช้แอป HP Smart และทำตามคำแนะนำบนหน้าจอ เพื่อเชื่อมต่อ ตั้งค่า พิมพ์ และอื่นๆ



วิธีที่ 2: Wi-Fi Direct (รุ่นไร้สายเท่านั้น)

Wi-Fi Direct อนุญาตให้อุปกรณ์ที่ใช้งาน Wi-Fi ได้ อาทิเช่น สมาร์ทโฟน แท็บเล็ต หรือคอมพิวเตอร์ เชื่อมต่อกับเครื่องพิมพ์ผ่านเครือข่ายไร้สายได้โดยตรง โดยไม่ต้องใช้เราเตอร์หรือจุดเข้าใช้งานไร้สาย โดยวิธีการเชื่อมต่อกับสัญญาณ Wi-Fi Direct ของเครื่องพิมพ์จะเหมือนกับวิธีการเชื่อมต่ออุปกรณ์ที่ใช้ Wi-Fi ได้กับเครือข่ายไร้สายหรือฮอตสปอตใหม่ทั่วไป

เปิดใช้งาน Wi-Fi Direct

1. บนหน้าจอหลักในแผงควบคุมเครื่องพิมพ์ ให้เลื่อนแท็บที่ด้านบนหน้าจอลงเพื่อเปิดแดชบอร์ด แล้วแตะ (Wi-Fi Direct)
2. แตะ (การตั้งค่า)
3. หากหน้าจอแสดงว่า Wi-Fi Direct ปิดอยู่ ให้แตะ **Wi-Fi Direct** แล้วเปิด

ค้นหาเครื่องพิมพ์

1. เปิด Wi-Fi ในอุปกรณ์เคลื่อนที่ และค้นหาเครือข่ายไร้สาย
2. เลือกชื่อเครื่องพิมพ์ตามที่แสดงบนแผงควบคุมเครื่องพิมพ์

i หากต้องการข้อมูลเพิ่มเติมเกี่ยวกับการพิมพ์แบบไร้สายและการตั้งค่าระบบไร้สาย ให้ไปที่ www.hp.com/go/wirelessprinting

i ศึกษาเพิ่มเติมเกี่ยวกับการพิมพ์ผ่านอุปกรณ์เคลื่อนที่

เครื่องพิมพ์นี้สนับสนุน AirPrint และ Wi-Fi Direct หากต้องการข้อมูลเพิ่มเติมด้านการพิมพ์ผ่านอุปกรณ์เคลื่อนที่ ให้สแกนรหัส QR นี้หรือไปที่ www.hp.com/go/LaserJetMobilePrinting



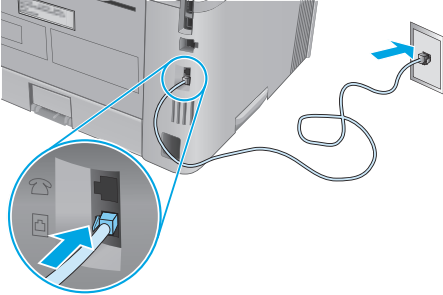
6. ตั้งค่าโทรสาร (รุ่นโทรสารเท่านั้น - ไม่จำเป็น)

6.1 เชื่อมต่อเครื่องพิมพ์

เนื่องจากเครื่องพิมพ์นี้เป็นอุปกรณ์แบบอะนาล็อก HP จึงขอแนะนำให้ผู้ใช้เครื่องพิมพ์กับสายโทรศัพท์อะนาล็อกที่แยกเฉพาะ

หมายเหตุ: ในบางประเทศ/พื้นที่อาจต้องใช้อะแดปเตอร์กับสายโทรศัพท์ที่มาพร้อมกับเครื่องพิมพ์

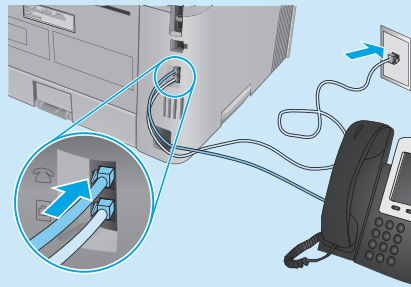
เชื่อมต่อสายโทรศัพท์ที่มาพร้อมกับเครื่องพิมพ์เข้ากับพอร์ตโทรสาร บนเครื่องพิมพ์ และต่อเข้ากับแจ็คโทรศัพท์บนผนัง



i ฉันจะเชื่อมต่อเครื่องตอบรับหรือโทรศัพท์ภายในได้อย่างไร

1. ถอดที่อุดออกจากพอร์ตโทรศัพท์
2. ถอดสายโทรศัพท์ของเครื่องตอบรับออกจากแจ็คโทรศัพท์ จากนั้นให้ต่อสายดังกล่าวเข้ากับพอร์ตโทรศัพท์ บนเครื่องพิมพ์

3. ต่อสายโทรศัพท์ที่มาพร้อมกับเครื่องพิมพ์เข้ากับพอร์ตโทรสาร บนเครื่องพิมพ์ และต่อเข้ากับแจ็คโทรศัพท์บนผนัง



i ฉันจะตั้งค่าเครื่องพิมพ์ HP ในสภาพแวดล้อมโทรศัพท์ดิจิทัลได้อย่างไร

เครื่องพิมพ์ HP ออกแบบมาสำหรับใช้กับระบบโทรศัพท์แบบอะนาล็อกแบบดั้งเดิมโดยเฉพาะ สำหรับสภาพแวดล้อมโทรศัพท์ดิจิทัล (เช่น DSL/ADSL, PBX, ISDN หรือ FoIP) อาจจำเป็นต้องใช้ตัวกรองสัญญาณหรือตัวแปลงสัญญาณดิจิทัลเป็นอะนาล็อก เมื่อมีการตั้งค่าเครื่องพิมพ์สำหรับเครื่องโทรสาร

หมายเหตุ: เครื่องพิมพ์อาจทำงานร่วมกับสายบริการดิจิทัลหรือผู้ให้บริการไม่ได้ทุกราย หรืออาจทำงานไม่ได้ในทุกสภาพแวดล้อมดิจิทัล หรืออาจทำงานร่วมกับตัวแปลงสัญญาณดิจิทัลเป็นอะนาล็อกไม่ได้ทั้งหมดทุกตัว ทั้งนี้ขึ้นอยู่กับบริษัทโทรศัพท์นั้นๆ ให้ติดต่อบริษัทโทรศัพท์ เพื่อกำหนดตัวเลือกการตั้งค่าที่ดีที่สุด

หมายเหตุ: เมื่อตั้งค่าการตรวจพบรูปแบบเสียงกริ่งในระบบโทรศัพท์ PBX ที่ใช้รูปแบบเสียงเรียกที่แตกต่างกันระหว่างโทรศัพท์ภายในและภายนอก ในกาารบันทึกรูปแบบเสียงเรียกให้ ใช้หมายเลขโทรสารภายนอกเป็นหมายเลขท่อนโทรสารของเครื่องพิมพ์


6.2 กำหนดค่าเครื่องพิมพ์

คุณต้องกำหนดค่าเวลา วันที่ และหัวเรื่องโทรสารในการใช้คุณสมบัติโทรสาร

ในการเปิดวิซาร์ดการตั้งค่าโทรสารของ HP (Windows) ให้ทำดังนี้

1. เปิด HP Printer Assistant ในเมนู เริ่ม
2. ใน HP Printer Assistant ให้เลือก โทรสาร จากนั้นเลือก วิซาร์ดการติดตั้งโทรสาร
3. ดำเนินการตามคำแนะนำบนหน้าจอ เพื่อกำหนดค่าโทรสาร

หากต้องการตั้งค่าวันที่/เวลาโทรสาร ให้ทำดังนี้

1. บนหน้าจอหลักในแผงควบคุมเครื่องพิมพ์ ให้เลื่อนแท็บที่ด้านบนหน้าจอ ลงเพื่อเปิดแดชบอร์ด
2. แตะปุ่ม  (การตั้งค่า)
3. แตะ การกำหนดลักษณะ
4. แตะ วันที่/เวลา เพื่อตั้งค่าวันที่และเวลาโทรสาร

หากต้องการตั้งค่าและเปลี่ยนหัวเรื่องโทรสาร ให้ทำดังนี้

1. บนหน้าจอแผงควบคุมเครื่องพิมพ์ ให้แตะ โทรสาร
2. แตะ การตั้งค่า แล้วแตะ การกำหนดลักษณะ
3. แตะ หัวเรื่องโทรสาร
4. ป้อนชื่อบริษัทหรือชื่อของคุณเอง จากนั้นแตะ เสร็จสิ้น
5. ป้อนหมายเลขโทรสารแล้วแตะ เสร็จสิ้น

หมายเหตุ: จำนวนตัวอักษรสูงสุดของหมายเลขโทรสาร คือ 20 ตัว

หมายเหตุ: จำนวนตัวอักษรสูงสุดของหัวเรื่องโทรสาร คือ 25 ตัว

📌 ศึกษาเพิ่มเติม!

สำหรับข้อมูลเพิ่มเติมเกี่ยวกับวิธีอื่นๆ ในการส่งโทรสาร เช่น การจัดการเวลาส่งโทรสาร ในภายหลังหรือส่งโทรสารจากคอมพิวเตอร์โปรดดูคู่มือผู้ใช้ในเว็บไซต์

- www.hp.com/support/ljM329MFP
- www.hp.com/support/ljM429MFP

7. ใช้คุณสมบัติการสแกน

ใช้ซอฟต์แวร์ HP Scan ในคอมพิวเตอร์ เพื่อเริ่มงานสแกนที่เครื่องพิมพ์

Windows

เปิด HP Printer Assistant เลือก สแกน แล้วเลือก สแกนเอกสารหรือรูปภาพ

Mac OS

ไปที่โฟลเดอร์ แอปพลิเคชัน และเปิด HP Easy Scan

การแก้ไขปัญหาเบื้องต้น

คู่มือผู้ใช้

ในคู่มือผู้ใช้จะมีข้อมูลการใช้เครื่องพิมพ์และการแก้ไขปัญหาเบื้องต้น ซึ่งหาได้จากในเว็บต่อไปนี้

1. ไปที่ www.hp.com/support/ljM329MFP หรือ www.hp.com/support/ljM428MFP หรือ www.hp.com/support/ljM429MFP
2. เลือกเครื่องพิมพ์หากมีการพร้อมตี ให้เลือก จากนั้นคลิก **User Guides** (คู่มือผู้ใช้)

ตรวจสอบอัปเดตเฟิร์มแวร์

ไปที่ www.hp.com/support/ljM329MFP หรือ www.hp.com/support/ljM428MFP หรือ www.hp.com/support/ljM429MFP

2. หากมีการพร้อมตี ให้เลือกเครื่องพิมพ์แล้วคลิก **Software and Drivers** (ซอฟต์แวร์และไดรเวอร์)
3. เลือกระบบปฏิบัติการ และคลิกปุ่ม **Next** (ถัดไป)
4. เลือก **Firmware** (เฟิร์มแวร์) และคลิกปุ่ม **Download** (ดาวน์โหลด)

วิธีใช้บนแผงควบคุม

แตะปุ่มวิธีใช้ ? บนแผงควบคุมเครื่องพิมพ์ เพื่อเข้าถึงหัวข้อวิธีใช้ต่างๆ

ทรัพยากรการสนับสนุนเพิ่มเติม

สำหรับวิธีใช้เครื่องพิมพ์ HP ที่ครอบคลุมทุกหัวข้อ ให้ไปที่

www.hp.com/support/ljM329MFP หรือ www.hp.com/support/ljM428MFP หรือ www.hp.com/support/ljM429MFP

- แก้ปัญหา
- ค้นหาคำแนะนำด้านการกำหนดค่าขั้นสูง
- ดาวโหลดอัปเดตซอฟต์แวร์
- เข้าร่วมฟอรัมการสนับสนุน
- ค้นหาข้อมูลการรับประกันและข้อบังคับ
- เข้าถึงทรัพยากรการพิมพ์ผ่านอุปกรณ์เคลื่อนที่

หากต้องการเรียนรู้เกี่ยวกับเครื่องพิมพ์ www.hp.com/support/ljM428MFPFAQ หรือสแกนรหัส QR นี้





LaserJet Pro MFP M329, M428-M429 入門指南

English.....	3
Bahasa Indonesia.....	6
한국어.....	9
ไทย.....	12
繁體中文.....	15
Tiếng Việt.....	18

附註：設定印表機和下載軟體驅動程式時必須要與網際網路連線。

常見問題集

如需常見問題解答，請前往 www.hp.com/support/ljM428MFPFAQ，或掃描 QR 代碼。



3. 控制面板上的初始設定

開啟印表機電源後，等待印表機初始化。若要瀏覽控制面板，請使用輕觸、撥動和捲動手勢。請依照控制面板上的提示，設定下列設定值：

- 語言
- 位置
- 印表機設定環境

選擇下列其中一個選項：

- **自我管理**：適合大部分使用者的最佳化預設值，包括引導式設定和組態步驟，以及自動更新。
- **IT 管理**：適合機群管理功能的最佳化預設值。

設定值完全可在初始設定之後進行自訂。

4. 下載與安裝軟體

附註：在接獲提示前，請勿連接 USB 連接線。

方法 1：下載 HP Easy Start (Windows 和 Mac OS)

1. 前往 123.hp.com/laserjet，然後按一下 Download (下載)。
2. 請按照螢幕上的指示和提示，將檔案儲存至電腦。
3. 從儲存軟體檔案的資料夾中，啟動軟體檔案。
4. 請依照螢幕上的指示，安裝軟體。
5. 在出現選擇連線類型的提示時，選擇適合連線類型的選項：

方法 2：從印表機支援網站下載 (Windows 和 Mac OS)

1. 前往 www.hp.com/support/ljM329MFP 或 www.hp.com/support/ljM428MFP 或 www.hp.com/support/ljM429MFP。
2. 選擇 **Software and Drivers** (軟體和驅動程式)。
3. 下載適用於您印表機型號和作業系統的軟體。
4. 從儲存軟體檔案的資料夾中，啟動軟體檔案。
5. 請依照螢幕上的指示，安裝軟體。
6. 在出現選擇連線類型的提示時，選擇適合連線類型的選項：

提示：(i) 將產品連線至無線網路 (僅限無線機型)

1. 從印表機控制面板的 Home 主畫面中，將畫面最上方的分頁往下撥，即可開啟儀表板，然後輕觸 (i) (Wireless (無線))。
2. 輕觸 (Setup (設定))。
3. 輕觸 **Wireless Settings** (無線設定值)。
4. 輕觸 **Wireless Setup Wizard** (無線設定精靈)。
5. 請依照面板指示，完成設定。

手動設定 IP 位址

請參閱使用指南，取得有關手動設定 IP 位址的資訊。如需詳細資訊，請造訪 www.hp.com/support/ljM329MFP 或 www.hp.com/support/ljM428MFP 或 www.hp.com/support/ljM429MFP。

5. 行動列印 (選用)

方法 1 : HP Smart

使用 HP Smart 應用程式，進行設定、列印和其他動作。

1. 掃描 QR 碼或前往 123.hp.com。
2. 安裝 HP Smart 應用程式。
3. 執行 HP Smart 應用程式，然後依照畫面上的指示，進行連線、設定、列印和其他動作。



方法 2 : Wi-Fi Direct (僅限無線機型)

Wi-Fi Direct 可讓具備 Wi-Fi 功能的裝置 (例如智慧型手機、平板電腦或電腦) 在沒有使用無線路由器或存取點的情況下，直接與印表機進行無線網路連線。使用將具備 Wi-Fi 功能的裝置連接至新的無線網路或熱點的相同方法，連接印表機的 Wi-Fi Direct 訊號。

啟用 Wi-Fi Direct

1. 從印表機控制面板的 **Home** 主畫面中，將畫面最上方的分頁往下撥，即可開啟儀表板，然後輕觸 (Wi-Fi Direct)。
2. 輕觸 (Setup (設定))。
3. 如果面板顯示 Wi-Fi Direct 已經關閉，則請輕觸 **Wi-Fi Direct**，並接著開啟網路。

探索印表機

1. 在行動裝置上，開啟 Wi-Fi，然後搜尋無線網路。
2. 選擇與印表機控制面板上所示相同名稱的印表機名稱。

如需無線列印及無線設定的詳細資訊，請前往 www.hp.com/go/wirelessprinting。

進一步了解行動列印

本產品支援 AirPrint 和 Wi-Fi Direct。如需行動列印的詳細資訊，請掃描 QR 碼或前往 www.hp.com/go/LaserJetMobilePrinting。



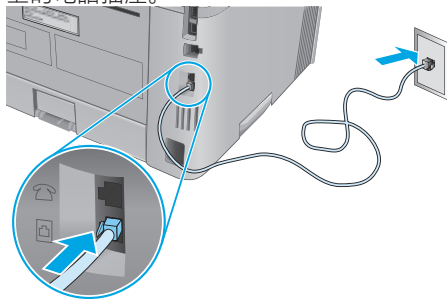
6. 設定傳真 (僅限傳真機型 - 選用)

6.1 連接印表機

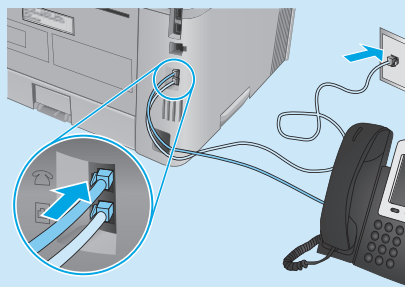
印表機為類比裝置。HP 建議在專用類比電話線路上使用印表機。

附註：有些國家/地區可能需要為印表機隨附的電話線準備轉接器。

將印表機隨附的電話線連接到印表機上的傳真 連接埠和牆上的電話插座。



3. 將印表機隨附的電話線連接到印表機上的傳真連接埠 和牆上的電話插座。



如何連接答錄機或電話分機？

1. 從電話連接埠取下插頭 .
2. 從電話插座拔下答錄機電話線，然後將電話線連接到印表機上的電話連接埠 .

如何在數位電話環境中設定 HP 印表機？

HP 印表機是專為搭配傳統類比電話服務而設計。在數位電話環境 (例如 DSL/ADSL、PBX、ISDN 或 FoIP) 中進行印表機的傳真設定時，可能需要數位轉類比過濾器或轉換器。

附註：印表機不一定能與所有的數位環境中的所有數位服務線路或供應商相容、或不一定能搭配所有的數位轉類比轉換器，實際情況會依電話公司而定。請聯絡電話公司，判斷哪些設定選項最適合。

附註：若在 PBX 電話系統中設定用於內線和外線通話等不同鈴聲模式的鈴聲模式偵測時，請務必使用外線電話號碼撥打印表機傳真號碼，以便錄製鈴聲模式。


6.2 設定印表機

您必須設定傳真時間、日期及標題等設定值，才能使用傳真功能。

開啟 HP 傳真設定精靈 (Windows)：

1. 從 **Start** (開始) 功能表中，開啟 HP Printer Assistant。
2. 在 HP Printer Assistant 中，選擇 **Fax** (傳真)，然後選擇 **Fax Setup Wizard** (傳真設定精靈)。
3. 請依照螢幕上的指示，設定傳真設定值。

設定傳真日期/時間：

1. 從印表機控制面板的主畫面中，將畫面最上方的分頁往下撥，即可開啟儀表板。
2. 輕觸  (**Setup** (設定)) 按鈕。
3. 輕觸 **Preferences** (偏好設定)。
4. 輕觸 **Date/time** (日期/時間)，即可設定傳真日期和時間。

設定或變更傳真標題：

1. 從印表機控制面板中，輕觸 **Fax** (傳真)。
2. 輕觸 **Setup** (設定)，然後輕觸 **Preferences** (偏好設定)。
3. 輕觸 **Fax Header** (傳真標題)。
4. 請輸入您個人或公司的名稱，然後輕觸 **Done** (完成)。
5. 請輸入您的傳真號碼，然後輕觸 **Done** (完成)。

附註： 傳真號碼的字元數最多為 20 個。

附註： 傳真標題的字元數最多為 25 個。

告訴我更多資訊！

如需其他傳真傳送方式 (例如排定在日後傳送傳真或從電腦傳送傳真) 的詳細資訊，請參閱網路版的使用指南：

- www.hp.com/support/ljM329MFP
- www.hp.com/support/ljM429MFP

7. 使用掃描功能

使用電腦上的 HP Scan 軟體，啟動印表機的掃描工作。

Windows

開啟 HP Printer Assistant，選擇 **Scan** (掃描)，然後選擇 **Scan a Document or Photo** (掃描文件或相片)。

Mac OS

移至 **Applications** (應用程式) 資料夾，並開啟 **HP Easy Scan**。

疑難排解

使用指南

使用指南包含印表機使用方式及疑難排解資訊。使用指南也有提供網路版：

前往 www.hp.com/support/ljM329MFP 或 www.hp.com/support/ljM428MFP 或 www.hp.com/support/ljM429MFP。

1. 在收到提示時選擇印表機，然後按一下 **User Guides** (使用指南)。

查看韌體更新

前往 www.hp.com/support/ljM329MFP 或 www.hp.com/support/ljM428MFP 或 www.hp.com/support/ljM429MFP。

2. 在收到提示時，選擇印表機，然後按一下 **Software and Drivers** (軟體和驅動程式)。
3. 選擇作業系統，然後按一下 **Next** (下一步) 按鈕。
4. 選擇 **Firmware** (韌體)，然後按一下 **Download** (下載) 按鈕。

控制面板說明

輕觸印表機控制面板上的 **Help** (說明)  按鈕，即可存取說明主題。

其他支援資源

如需包含印表機所有相關資訊的 HP 說明，請前往 www.hp.com/support/ljM329MFP 或 www.hp.com/support/ljM428MFP 或 www.hp.com/support/ljM429MFP。

- 解決問題
- 尋找進階組態設定指示
- 下載軟體更新
- 加入支援論壇
- 尋找保固及法規資訊
- 存取行動列印資源

若要進一步了解印表機，請前往 www.hp.com/support/ljM428MFPFAQ，或掃描 QR 代碼。



English.....	3
Bahasa Indonesia.....	6
한국어.....	9
ไทย.....	12
繁體中文.....	15
Tiếng Việt.....	18



LaserJet Pro MFP M329, M428-M429

Hướng dẫn bắt đầu

LƯU Ý: Cần có kết nối Internet để thiết lập máy in và tải xuống trình điều khiển phần mềm.

❗ Câu hỏi thường gặp

Để xem những câu hỏi thường gặp, hãy truy cập www.hp.com/support/ljM428MFPFAQ hoặc quét mã QR.



3. Thiết lập ban đầu trên bảng điều khiển

Sau khi bật máy in, hãy đợi để máy in khởi động. Để điều hướng trong bảng điều khiển, hãy sử dụng các cử chỉ chạm, vuốt và cuộn. Làm theo lời nhắc trên bảng điều khiển để cấu hình các cài đặt sau:

- Ngôn ngữ
- Vị trí
- Môi trường thiết lập máy in

Chọn một trong các tùy chọn này:

- **Self-managed** (Tự quản lý): Cài đặt mặc định được tối ưu hóa cho hầu hết người dùng bao gồm cập nhật tự động và các bước cấu hình cũng như thiết lập có hướng dẫn.
- **It-managed** (Quản lý bằng CNTT): Cài đặt mặc định được tối ưu hóa để có thể quản lý nhiều máy in.

Cài đặt có thể tùy chỉnh hoàn toàn sau lần thiết lập đầu tiên.

4. Tải xuống và cài đặt phần mềm

LƯU Ý: Không cắm cáp USB cho tới khi bạn được nhắc làm điều đó.

🖨️ Phương pháp 1: Tải xuống HP Easy Start (Windows và Mac OS)

1. Truy cập 123.hp.com/laserjet và nhấp vào **Download** (Tải xuống).
2. Làm theo hướng dẫn và lời nhắc trên màn hình để lưu tệp vào máy tính.
3. Khởi chạy tệp phần mềm từ thư mục lưu tệp.
4. Làm theo hướng dẫn trên màn hình để cài đặt phần mềm.
5. Khi được nhắc chọn loại kết nối, hãy chọn tùy chọn thích hợp cho loại kết nối.

🖨️ Phương pháp 2: Tải xuống từ trang web hỗ trợ máy in (Windows và Mac OS)

1. Truy cập www.hp.com/support/ljM329MFP hoặc www.hp.com/support/ljM428MFP hoặc www.hp.com/support/ljM429MFP.
2. Chọn **Software and Drivers** (Phần mềm và trình điều khiển).
3. Tải xuống phần mềm cho kiểu máy in và hệ điều hành của bạn.
4. Khởi chạy tệp phần mềm từ thư mục lưu tệp.
5. Làm theo hướng dẫn trên màn hình để cài đặt phần mềm.
6. Khi được nhắc chọn loại kết nối, hãy chọn tùy chọn thích hợp cho loại kết nối.

📶 Mẹo: Kết nối máy in với mạng không dây (chỉ dành cho kiểu máy không dây)

1. Từ Màn hình chính trên bảng điều khiển máy in, vuốt tab ở đầu màn hình xuống dưới để mở Bảng điều khiển rồi chạm vào **📶** (Không dây).
2. Chạm vào **⚙️ (Setup)** (Thiết lập)).
3. Chạm vào **Wireless Settings** (Cài đặt mạng không dây).
4. Chạm vào **Wireless Setup Wizard** (Trình hướng dẫn thiết lập mạng không dây).
5. Làm theo hướng dẫn trên màn hình để hoàn tất thiết lập.

❗ Định cấu hình địa chỉ IP theo cách thủ công

Xem hướng dẫn sử dụng máy in để biết thông tin về cách cấu hình thủ công địa chỉ IP. Để biết thêm thông tin, hãy truy cập www.hp.com/support/ljM329MFP hoặc www.hp.com/support/ljM428MFP hoặc www.hp.com/support/ljM429MFP.

5. In từ thiết bị di động (Tùy chọn)

Phương pháp 1: HP Smart

Sử dụng ứng dụng HP Smart để thiết lập, in và hơn thế nữa.

1. Quét mã QR hoặc truy cập 123.hp.com.
2. Cài đặt ứng dụng HP Smart.
3. Chạy ứng dụng HP Smart và làm theo hướng dẫn trên màn hình để kết nối, thiết lập, in và hơn thế nữa.



Phương pháp 2: Wi-Fi Direct (chỉ dành cho kiểu máy không dây)

Wi-Fi Direct cho phép các thiết bị tương thích với Wi-Fi, chẳng hạn như điện thoại thông minh, máy tính bảng hoặc máy tính thực hiện kết nối không dây trực tiếp với máy in mà không cần sử dụng điểm truy cập hoặc bộ định tuyến không dây. Kết nối với tín hiệu Wi-Fi Direct của máy in theo cách giống như các thiết bị tương thích Wi-Fi kết nối với điểm truy cập hoặc mạng không dây mới.

Bật Wi-Fi Direct

1. Từ màn hình **Home** (Chính) trên bảng điều khiển máy in, hãy vuốt tab ở đầu màn hình xuống dưới để mở Bảng điều khiển rồi chạm vào (**Wi-Fi Direct**).
2. Chạm vào (**Setup** (Thiết lập)).
3. Nếu màn hình hiển thị Wi-Fi Direct đang tắt, hãy chạm vào **Wi-Fi Direct** rồi bật tính năng này.

Phát hiện máy in

1. Từ thiết bị di động, bật Wi-Fi và tìm mạng không dây.
2. Chọn tên máy in như hiển thị trên bảng điều khiển máy in.

Để biết thêm thông tin về thiết lập mạng không dây và in không dây, hãy truy cập www.hp.com/go/wirelessprinting.

Tìm hiểu thêm về tính năng in từ thiết bị di động

Sản phẩm hỗ trợ AirPrint và Wi-Fi Direct. Để biết thêm thông tin về tính năng in từ thiết bị di động, hãy quét mã QR hoặc truy cập www.hp.com/go/LaserJetMobilePrinting.



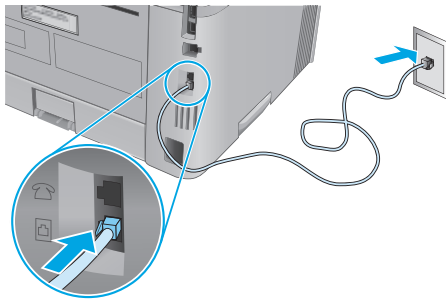
6. Thiết lập fax (chỉ dành cho kiểu máy fax - tùy chọn)

6.1 Kết nối máy in

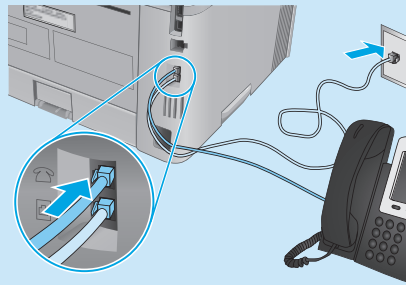
Máy in là thiết bị analog. HP khuyến cáo bạn nên sử dụng máy in trên đường dây điện thoại analog chuyên dụng.

LƯU Ý: Bạn có thể phải sử dụng bộ điều hợp cho dây điện thoại đi kèm với sản phẩm tại một số quốc gia/vùng.

Cắm dây điện thoại đi kèm với máy in vào cổng Fax trên máy in và vào giắc cắm điện thoại trên tường.



3. Cắm dây điện thoại đi kèm với máy in vào cổng fax trên máy in và vào giắc cắm điện thoại trên tường.



Làm thế nào để tôi cài đặt máy in HP trong môi trường điện thoại kỹ thuật số?

Các máy in HP được thiết kế riêng cho mục đích sử dụng với các dịch vụ điện thoại analog truyền thống. Đối với môi trường điện thoại kỹ thuật số (như: DSL/ADSL, PBX, ISDN hay FoIP), bạn có thể cần dùng đến bộ lọc hoặc bộ chuyển đổi tín hiệu kỹ thuật số thành analog khi cài đặt máy in cho chức năng fax.

Lưu ý: Tùy theo công ty điện thoại, máy in có thể không tương thích với tất cả các đường dây hoặc nhà cung cấp dịch vụ kỹ thuật số, trong tất cả các môi trường kỹ thuật số hoặc với tất cả các bộ chuyển đổi tín hiệu kỹ thuật số thành analog. Hãy liên lạc với công ty điện thoại để xác định xem tùy chọn cài đặt nào là phù hợp nhất.

Lưu ý: Khi cài đặt chức năng dò tìm mẫu đồ chuông trong hệ thống điện thoại PBX được thiết lập các mẫu đồ chuông khác nhau cho cuộc gọi nội bộ và từ bên ngoài, hãy bảo đảm rằng bạn quay số fax của máy in bằng số bên ngoài để ghi lại mẫu đồ chuông.

Làm thế nào để tôi kết nối máy trả lời tự động hoặc điện thoại nhánh?

1. Rút phích cắm ra khỏi cổng điện thoại .
2. Tháo dây điện thoại của máy trả lời tự động ra khỏi giắc cắm điện thoại rồi cắm dây đó vào cổng điện thoại trên máy in.


6.2 Cấu hình máy in

Bạn phải cấu hình các cài đặt ngày, giờ và tiêu đề fax để sử dụng tính năng fax.

Cách mở Trình hướng dẫn thiết lập fax của HP (Windows):

1. Mở Trợ lý máy in HP từ menu **Start** (Khởi động).
2. Trong Trợ lý máy in HP, chọn **Fax** rồi chọn **Fax Setup Wizard** (Trình hướng dẫn thiết lập fax).
3. Thực hiện theo hướng dẫn trên màn hình để cấu hình cài đặt fax.

Cách thiết lập ngày/giờ fax:

1. Từ Màn hình chính trên bảng điều khiển máy in, vuốt tab ở đầu màn hình xuống dưới để mở Bảng điều khiển.
2. Chạm vào nút  (**Setup** (Thiết lập)).
3. Chạm vào **Preferences** (Tùy chọn).
4. Chạm vào **Date/time** (Ngày/giờ) để thiết lập ngày và giờ fax.

Cách đặt hoặc thay đổi tiêu đề fax:

1. Từ màn hình bảng điều khiển máy in, chạm vào **Fax**.
2. Chạm vào **Setup** (Thiết lập) rồi chạm vào **Preferences** (Tùy chọn).
3. Chạm vào **Fax Header** (Tiêu đề fax).
4. Nhập tên riêng hoặc tên công ty của bạn rồi chạm vào **Done** (Xong).
5. Nhập số fax của bạn rồi chạm vào **Done** (Xong).

LƯU Ý: Số ký tự tối đa cho số fax là 20.

LƯU Ý: Số ký tự tối đa cho tiêu đề fax là 25.

Hãy tìm hiểu thêm!

Để biết thêm thông tin về các cách gửi fax khác, như lên lịch để gửi fax sau hay gửi fax từ máy tính, hãy xem Hướng dẫn sử dụng trên web:

- www.hp.com/support/ljM329MFP
- www.hp.com/support/ljM429MFP

7. Sử dụng tính năng quét

Hãy sử dụng phần mềm HP Scan trên máy tính của bạn để bắt đầu lệnh quét trên máy in.

Windows

Mở **HP Printer Assistant** (Trợ lý Máy in HP), chọn **Scan** (Quét) rồi chọn **Scan a Document or Photo** (Quét tài liệu hoặc ảnh).

Mac OS

Chuyển tới thư mục **Applications** (Ứng dụng) và mở **HP Easy Scan**.

Xử lý sự cố

Hướng dẫn sử dụng

Hướng dẫn sử dụng chứa thông tin về cách sử dụng và khắc phục sự cố với máy in. Bạn có thể xem hướng dẫn này trên Trang web:

1. Truy cập www.hp.com/support/ljM329MFP hoặc www.hp.com/support/ljM428MFP hoặc www.hp.com/support/ljM429MFP.
2. Chọn máy in nếu được nhắc rồi nhấp vào **User Guides** (Hướng dẫn sử dụng).

Kiểm tra các bản cập nhật của chương trình cơ sở

1. Truy cập www.hp.com/support/ljM329MFP hoặc www.hp.com/support/ljM428MFP hoặc www.hp.com/support/ljM429MFP.
2. Nếu được nhắc, hãy chọn máy in rồi nhấp vào **Software and Drivers** (Phần mềm và trình điều khiển).
3. Chọn hệ điều hành và nhấp vào nút **Next** (Tiếp).
4. Chọn **Firmware** (Chương trình cơ sở) và nhấp vào nút **Download** (Tải xuống).

Trợ giúp bằng điều khiển

Chạm vào nút Help (Trợ giúp)  trên bảng điều khiển máy in để truy cập các chủ đề trợ giúp.

Tài nguyên hỗ trợ bổ sung

Để có được trợ giúp toàn diện của HP cho máy in, hãy truy cập www.hp.com/support/ljM329MFP hoặc www.hp.com/support/ljM428MFP hoặc www.hp.com/support/ljM429MFP.

- Giải quyết sự cố
- Tìm hướng dẫn cấu hình nâng cao
- Tải xuống các bản cập nhật phần mềm
- Tham gia các diễn đàn hỗ trợ
- Tìm thông tin về quy định và bảo hành
- Truy cập vào tài nguyên in dành cho thiết bị di động

Để tìm hiểu thêm về máy in, vui lòng truy cập www.hp.com/support/ljM428MFPFAQ hoặc quét mã QR.



© Copyright 2018 HP Development Company, L.P.

Reproduction, adaptation or translation without prior written permission is prohibited, except as allowed under the copyright laws.

The information contained herein is subject to change without notice.

The only warranties for HP products and services are set forth in the express warranty statements accompanying such products and services. Nothing herein should be construed as constituting an additional warranty. HP shall not be liable for technical or editorial errors or omissions contained herein.

Trademark Credits

Windows® is a U.S. registered trademark of Microsoft Corporation.

Apple and the Apple logo are trademarks of Apple Inc., registered in the U.S. and other countries.

Mac OS is a trademark of Apple Inc., registered in the U.S. and other countries.

AirPrint is a trademark of Apple Inc., registered in the U.S. and other countries.



www.hp.com

