



# Color LaserJet Pro MFP M479 Getting Started Guide



[www.hp.com/support/colorljm479mfp](http://www.hp.com/support/colorljm479mfp)



[www.register.hp.com](http://www.register.hp.com)

**NOTE:** An internet connection is required to set up the printer and download the software driver.

## FAQ

For frequently asked questions, go to [www.hp.com/support/colorljm479MFPFAQ](http://www.hp.com/support/colorljm479MFPFAQ) or scan the QR code.



## IMPORTANT:

Follow **Steps 1 - 3** on the printer hardware setup poster, then continue with **Step 4**.



## 4. Set up the control panel

After turning on the printer, wait for it to initialize. To navigate the touchscreen control panel, use touch, swipe, and scroll gestures. Follow the prompts on the control panel to configure **Language**, **Country/Region**, **Date/Time**, and **Self-managed** or **IT-managed**.

- Self-managed: Optimized default settings for most users that include guided setup and configuration steps and automatic updates.
- IT-managed: Optimized default settings for fleet manageability.

Follow additional prompts to complete control panel setup. Settings are fully customizable after initial setup.

## 5. Download and install the software

**NOTE:** Do not connect the USB cable until you are prompted to do so.

### Method 1: Download HP Easy Start (Windows and macOS)

HP Easy Start will detect the printer, assist with selecting the printer connection type (USB, Wired, or Wireless), and install the software.

1. From the computer, go to [123.hp.com/laserjet](http://123.hp.com/laserjet), and click **Download**.
2. Run HP Easy Start.
3. When prompted to select a connection type, select the appropriate option for the type of connection.

**NOTE:** If HP Easy Start does not detect the printer or the software does not install automatically, go to **Method 2: Manually download from printer support website (Windows)**.



### Method 2: Manually download from printer support website (Windows)

1. From the computer, go to [www.hp.com/support/colorljm479mfp](http://www.hp.com/support/colorljm479mfp).
2. Select **Software and drivers**.
3. Download the software for your printer model and operating system.
4. Launch the software file from the folder where the file was saved.
5. Follow the onscreen instructions to install the software.
6. When prompted to select a connection type, select the appropriate option for the type of connection.

### Manually configure the IP address

See the printer user guide for information on how to manually configure the IP address at [www.hp.com/support/colorljm479mfp](http://www.hp.com/support/colorljm479mfp).

## Troubleshooting Tips Connect the printer to a wireless network (wireless models only)

The installation software might not detect the printer during wireless setup. Follow the steps below to connect the printer to the same wireless network as the computer.

1. From the Home screen on the printer control panel, swipe the tab at the top of the screen downward to open the Dashboard, and then touch the **Wireless** icon.
2. Touch the **Setup** icon.
3. Touch **Wireless Settings**.
4. Touch **Wireless Setup Wizard**.
5. Follow the display instructions to complete the setup.
6. Reinstall the software using **Method 1** or **Method 2** above.

English..... 1

简体中文..... 4

Bahasa Indonesia..... 7

한국어 ..... 10

ไทย ..... 13

繁體中文..... 16

Tiếng Việt ..... 19

## 6. Mobile printing (optional)

### Connect the mobile device to a wireless network

Print from a mobile device to a printer that is connected to a wireless router/network. Connect the mobile device to the same wireless network as the printer.

Use the HP Smart app to set up, print, and more.

1. Go to [123.hp.com](http://123.hp.com) or scan the QR code.
2. Install the HP Smart app.
3. Run the HP Smart app and follow the onscreen instructions to connect, set up, print, and more.



**NOTE:** The HP Smart app might not be available for all mobile operating systems.


#### HP Roam

For information on using HP Roam mobile print app, go to [hp.com/go/roam](http://hp.com/go/roam) on the mobile device.

### Connect the mobile device using Wi-Fi Direct (wireless printer models only)

Print using Wi-Fi Direct with no router/network connection needed.

#### 1. Enable Wi-Fi Direct on your printer

1. From the Home screen on the printer control panel, swipe the tab at the top of the screen downward to open the Dashboard, and then touch the Wi-Fi Direct  icon.
2. On the **Wi-Fi Direct Details** screen, open the **Wi-Fi Direct Settings** menu. Touch the switch to turn the Wi-Fi Direct Status to **On**.
3. Take note of the Wi-Fi Direct name and Wi-Fi Direct password from your printer control panel.

#### 2. Discover the printer from your device

1. From the mobile device, go to the device **Settings** menu, and search for the Wi-Fi Direct name you found from the printer control panel.
2. Select the correct printer name, and enter the Wi-Fi Direct password if prompted.

## Learn more about mobile printing

The product supports AirPrint and Wi-Fi Direct. For more mobile printing information, go to [www.hp.com/go/LaserJetMobilePrinting](http://www.hp.com/go/LaserJetMobilePrinting) or scan the QR code.




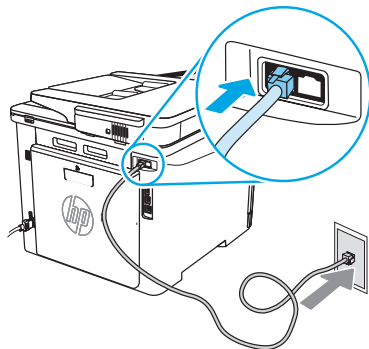
## 7. Set up fax (fax models only - optional)

### 7.1 Connect the printer

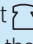
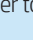
The printer is an analog device. HP recommends using the printer on a dedicated analog telephone line.

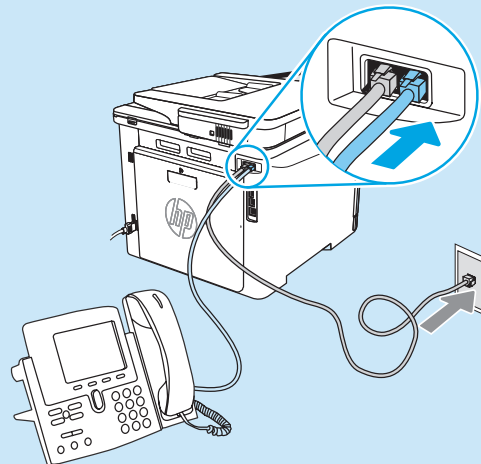
 **NOTE:** Some countries/regions might require an adapter for the phone cord that came with the printer.

Connect the phone cord that came with the printer to the fax port  on the printer and to the telephone jack on the wall.



### How do I connect an answering machine or extension phone?

1. Disconnect the answering machine phone cord from the phone jack, and then connect it to the phone port  on the printer.
2. Connect the phone cord that came with the printer to the fax port  on the printer and to the telephone jack on the wall.



## How do I set up HP printers in digital phone environments?

HP printers are designed specifically for use with traditional analog phone services. For a digital phone environment (such as DSL/ADSL, PBX, ISDN, or FoIP), digital-to-analog filters or converters might be necessary when setting up the printer for fax.

**NOTE:** Depending on the phone company, the printer might not be compatible with all digital service lines or providers, in all digital environments, or with all digital-to-analog converters. Contact the phone company to determine which setup options are best.

**NOTE:** When setting up ring pattern detection in a PBX phone system that has different ring patterns for internal and external calls, make sure to dial the printer fax number using an external number for recording the ring pattern.

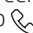
## 7.2 Configure the printer

Configuring the fax time, date, and header settings is required to use the fax feature. The easiest method is to use the **Fax Set-Up Wizard** in the product software. Alternately, configure these and other basic fax settings using the control panel.

### Fax Set-Up Wizard (software)

1. Open the HP Printer Assistant.
  - Windows 10: From the Start menu, click **All Apps** (if present), click **HP**, and then select the printer name.
  - Windows 8.1: Click the down arrow in lower left corner of the Start screen, and then select the printer name.
  - Windows 8: Right-click an empty area on the Start screen, click **All Apps** on the app bar, and then select the printer name.
  - Windows 7: From the computer desktop, click **Start**, select **All Programs**, click **HP**, click the folder for the printer, select the icon with the printer's name, and then open HP Printer Assistant.
2. In the HP Printer Assistant, select **Fax**, and then select **Fax Setup Wizard**.
3. Follow the onscreen instructions to configure the fax settings.

### Control Panel

1. From the Home screen on the printer control panel, swipe the tab at the top of the screen downward to open the Dashboard, and then touch the Fax Setup  icon.
2. Touch **Setup Wizard**.
3. Enter your fax number. The maximum number of characters for the fax number is 20.
4. Enter a name for your fax machine. The maximum number of characters for the fax machine name is 25.
5. Follow the remaining onscreen instructions to configure the fax settings.

### Learn more!

For more information about other ways to send faxes, such as scheduling a fax to be sent later or sending faxes from a computer, see the user guide or go to [www.hp.com/support/colorljm479mfp](http://www.hp.com/support/colorljm479mfp).

## 8. Use the scan feature

### Windows

Use the HP Scan application shortcut on the Desktop, or open the HP Printer Assistant, select **Scan**, and then select **Scan a Document or Photo**.

### macOS

Go to the **Applications** folder and open **HP Easy Scan**.

## Troubleshooting

### User guide

The user guide includes printer usage and troubleshooting information. It is available on the Web:

1. Go to [www.hp.com/support/colorljm479mfp](http://www.hp.com/support/colorljm479mfp).
2. Select the printer if prompted, and then click **User Guides**.

### Check for firmware updates

1. Go to [www.hp.com/support/colorljm479mfp](http://www.hp.com/support/colorljm479mfp).
2. Select the printer if prompted, and then click **Software and Drivers**.
3. Select the operating system, and click the **Next** button.
4. Select **Firmware**, and click the **Download** button.

### Control panel help

To access help topics, touch the Help  button on the printer control panel.



### Additional support resources

For HP's all-inclusive help for the printer, go to: [www.hp.com/support/colorljm479mfp](http://www.hp.com/support/colorljm479mfp)

- Solve problems
- Find advanced configuration instructions
- Download software updates
- Join support forums
- Find warranty and regulatory information
- Access mobile printing resources

To learn more about the printer, go to:

[www.hp.com/support/colorljm479mfpfaq](http://www.hp.com/support/colorljm479mfpfaq) or scan the QR code.





# Color LaserJet Pro MFP M479 入门指南

[www.hp.com/support/colorljm479mfp](http://www.hp.com/support/colorljm479mfp)[www.register.hp.com](http://www.register.hp.com)

**注：**需要 internet 连接以设置打印机和下载软件驱动程序。

## ❗ 常见问题解答

有关常见问题，请访问  
[www.hp.com/support/colorljm479MFPFAQ](http://www.hp.com/support/colorljm479MFPFAQ)  
或扫描右侧使用 HP Smart 应用程序进行设置、打印等等。  
二维码。



## 重要信息：

执行打印机硬件设置海报上的  
**步骤 1 - 3**，然后继续执行**步骤 4**。



## 4. 设置控制面板

开启打印机之后，等待其初始化。要在触摸屏控制面板上导航，请使用轻触、轻扫和滚动手势。按控制面板上的提示配置**语言**、**国家/地区**、**日期/时间**和**自我管理**或**IT 管理**。

- 自我管理：为大多数用户优化的默认设置，其中包括引导式设置以及配置步骤和自动更新。
- IT 管理：为批量管理优化的默认设置。

按其他提示完成控制面板设置。

初始设置之后，全部设置均可自定义。

## 5. 下载和安装软件

**注：**请勿连接USB电缆，直到接到提示。

### 方法 1：下载 HP Easy Start (Windows 和 macOS)

HP Easy Start 将检测打印机、协助选择打印机连接类型 (USB、有线或无线) 并安装软件。

1. 从计算机上访问 [123.hp.com/laserjet](http://123.hp.com/laserjet)，然后单击**下载**。
2. 运行 HP Easy Start。
3. 提示选择连接类型时，选择该连接类型的相应选项。

**注：**如果 HP Easy Start 未检测到打印机或软件未能自动安装，请转到**方法 2：手动从打印机支持网站下载 (Windows)**。



### 方法 2：手动从打印机支持网站下载 (Windows)

1. 从计算机上访问 [www.hp.com/support/colorljm479mfp](http://www.hp.com/support/colorljm479mfp)。
2. 选择**软件和驱动程序**。
3. 下载适用于您的打印机型号和操作系统的软件。
4. 从保存软件文件的文件夹中启动该文件。
5. 按照屏幕上的说明安装该软件。
6. 提示选择连接类型时，选择该连接类型的相应选项。

## ❗ 手动配置 IP 地址

有关如何手动配置 IP 地址的信息，请参阅  
[www.hp.com/support/colorljm479mfp](http://www.hp.com/support/colorljm479mfp) 上打印机的《用户指南》。

## 故障排除提示 (🔧) 将打印机连接到无线网络 (仅限无线型号)

安装软件在无线设置期间可能检测不到打印机。按下方的各个步骤将打印机与计算机连接到同一无线网络。

1. 从打印机控制面板上的主屏幕中，向下滑动屏幕顶部的选项卡以打开“仪表板”，然后轻触**无线** (📶) 图标。
2. 轻触**设置** (⚙️) 图标。
3. 轻触**无线设置**。
4. 轻触**无线设置向导**。
5. 按显示屏上的说明完成设置。
6. 使用上述的**方法 1** 或**方法 2** 重新安装软件。

## 6. 移动打印（可选）

### 将移动设备连接到无线网络

从移动设备打印到连接到无线路由器/网络的打印机。将移动设备与打印机连接到同一无线网络。

使用 HP Smart 应用程序进行设置、打印等等。

1. 访问 [123.hp.com](http://123.hp.com) 或扫描右侧二维码。
2. 安装 HP Smart 应用程序。
3. 运行 HP Smart 应用程序，然后按屏幕上的说明进行连接、设置、打印等等。



注：可能并非所有移动操作系统均有 HP Smart 应用程序可用。

### HP Roam

有关使用 HP Roam 移动打印应用程序的信息，请在移动设备上访问 [hp.com/go/roam](http://hp.com/go/roam)。

### 使用 Wi-Fi Direct 连接移动设备 （仅限无线打印机型号）

使用 Wi-Fi Direct 无需路由器/网络连接即可打印。

#### 1. 在打印机上启用 Wi-Fi Direct

1. 从打印机控制面板上的主屏幕中，向下滑动屏幕顶部的选项卡以打开“仪表板”，然后轻触“Wi-Fi Direct”图标。
2. 在 Wi-Fi Direct 详细信息屏幕上，打开 Wi-Fi Direct 设置菜单。轻触开关以将 Wi-Fi Direct 状态改为开。
3. 从打印机控制面板上记下 Wi-Fi Direct 名称和 Wi-Fi Direct 密码

#### 2. 从您的设备上发现打印机

1. 从移动设备上，转到设备的设置菜单，然后搜索从打印机控制面板上发现的 Wi-Fi Direct 名称。
2. 选择正确的打印机名称，如果提示输入 Wi-Fi Direct 密码，请输入该密码。

## 详细了解移动打印

本产品支持 AirPrint 和 Wi-Fi Direct。有关移动打印的详细信息，请访问 [www.hp.com/go/LaserJetMobilePrinting](http://www.hp.com/go/LaserJetMobilePrinting) 或扫描右侧二维码。



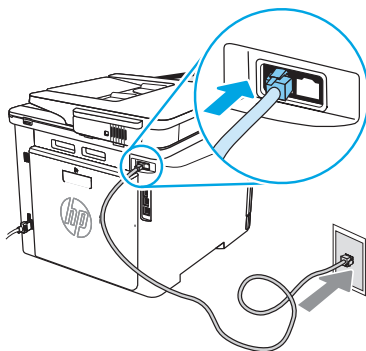
## 7. 设置传真（仅限传真型号 - 可选）

### 7.1 连接打印机

本打印机为模拟设备。HP 建议在专用模拟电话线路上使用本打印机。

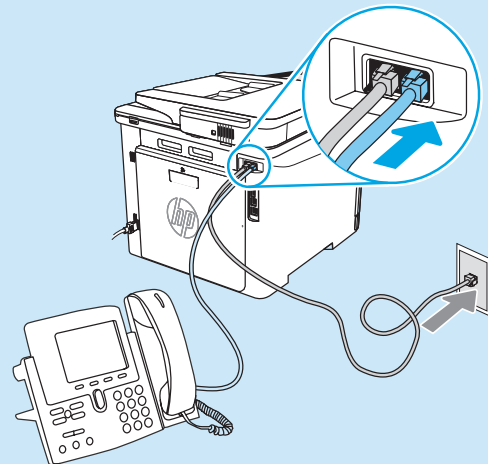
注：部分国家/地区可能需要使用适配器才能连接本打印机随附的电话线。

用打印机随附的电话线连接打印机上的传真端口与墙上的电话插孔。



### 如何连接电话应答机或电话分机？

1. 从电话插孔中拔下电话应答机的电话线，然后将这条电话线连接到打印机上的电话端口。
2. 用打印机随附的电话线连接打印机上的传真端口与墙上的电话插孔。



## ① 如何在数字电话环境下设置 HP 打印机？

HP 打印机专为用于传统模拟电话服务而设计。对于数字电话环境（如 DSL/ADSL、PBX、ISDN 或 FoIP），为打印机设置传真时可能需要使用数模滤波器或转换器。

**注：**根据电话公司的不同，打印机可能并非在所有数字环境下与所有数字服务线路或提供商兼容或与所有数模转换器兼容。请与电话公司联系以判断何种设置方式最佳。

**注：**在内外线电话振铃模式不同的 PBX 电话系统中设置振铃模式检测时，务必使用外线号码拨打打印机传真号以录制振铃模式。


## 7.2 配置打印机

必须配置传真时间、日期和标题设置才能使用传真功能。最简便的方法为使用产品软件中的**传真设置向导**。或者，使用控制面板配置这些设置和其他基本传真设置。

### 传真设置向导（软件）

1. 打开 HP Printer Assistant。
  - Windows 10: 从“开始”菜单中，单击**所有应用**（如果存在），单击**HP**，然后选择打印机名称。
  - Windows 8.1: 单击“开始”屏幕左下角的向下箭头，然后选择打印机名称。
  - Windows 8: 右击“开始”屏幕上的空白区域，在应用栏上单击**所有应用**，然后选择打印机名称。
  - Windows 7: 从计算机桌面上，单击**开始**，选择**所有程序**，单击**HP**，单击打印机所在的文件夹，选择带有打印机名称的图标，然后打开 HP Printer Assistant。
2. 在 HP Printer Assistant 中选择**传真**，然后选择**传真设置向导**。
3. 按照屏幕上的说明配置传真设置。

### 控制面板

1. 从打印机控制面板上的主屏幕中，向下滑动屏幕顶部的选项卡以打开“仪表盘”，然后轻触“传真设置”图标。
2. 轻触**设置向导**。
3. 输入您的传真号码。传真号的最大字符数为 20。
4. 输入传真机的名称。传真机名称的最大字符数为 25。
5. 按照屏幕上的剩余说明配置传真设置。

## ① 了解详细信息！

有关发送传真的其他方法（如安排以后发送传真或从计算机发送传真）的详细信息，请参阅用户指南或访问 [www.hp.com/support/colorljm479mfp](http://www.hp.com/support/colorljm479mfp)。

## 8. 使用扫描功能

### Windows

使用桌面上的 HP Scan 应用程序快捷方式或打开 HP Printer Assistant，选择**扫描**，然后选择**扫描文档或照片**。

### macOS

转到**应用程序**文件夹，然后打开 **HP Easy Scan**。

## 故障排除

### 用户指南

《用户指南》中含有打印机使用和故障排除信息。可从 Web 下载：

1. 访问 [www.hp.com/support/colorljm479mfp](http://www.hp.com/support/colorljm479mfp)。
2. 如果提示选择打印机，请照做，然后单击**用户指南**。

### 检查固件更新

1. 访问 [www.hp.com/support/colorljm479mfp](http://www.hp.com/support/colorljm479mfp)。
2. 如果提示选择打印机，请照做，然后单击**软件和驱动程序**。
3. 选择操作系统，然后单击**下一步**按钮。
4. 选择**固件**，然后单击**下载**按钮。

### 控制面板帮助

要访问帮助主题，请轻触打印机控制面板上的“帮助”按钮。



### 其他支持资源

有关 HP 对打印机的全方位帮助，请访问：  
[www.hp.com/support/colorljm479mfp](http://www.hp.com/support/colorljm479mfp)

- 解决问题
- 查找高级配置说明
- 下载软件更新
- 加入支持论坛
- 查找保修和监管信息
- 访问移动打印资源

要详细了解打印机，请访问：

[www.hp.com/support/colorljm479MFPFAQ](http://www.hp.com/support/colorljm479MFPFAQ) 或扫描右侧二维码。





# Color LaserJet Pro MFP M479

## Panduan Persiapan

English.....1

简体中文.....4

Bahasa Indonesia.....7

한국어 ..... 10

ไทย ..... 13

繁體中文..... 16

Tiếng Việt ..... 19



[www.hp.com/support/colorljm479mfp](http://www.hp.com/support/colorljm479mfp)



[www.register.hp.com](http://www.register.hp.com)

**CATATAN:** Diperlukan koneksi internet untuk menyiapkan printer dan mendownload driver perangkat lunak.

### ! Pertanyaan Umum

Untuk pertanyaan umum, kunjungi [www.hp.com/support/colorljm479MFPFAQ](http://www.hp.com/support/colorljm479MFPFAQ) atau pindai kode QR.



### ! PENTING:

Ikuti **Langkah 1-3** pada poster konfigurasi perangkat keras printer, lalu lanjutkan ke **Langkah 4**.



## 4. Mengkonfigurasi panel kontrol

Setelah menghidupkan printer, tunggu proses inisialisasi. Untuk menavigasikan panel kontrol layar sentuh, gunakan gerakan sentuh, geser, dan gulir. Ikuti perintah pada panel kontrol untuk mengkonfigurasi **Bahasa, Negara/Kawasan, Tanggal/Waktu, dan Dikelola sendiri** atau **dikelola TI**.

- **Dikelola sendiri:** Pengaturan default yang dioptimalkan untuk sebagian besar pengguna yang mencakup langkah-langkah pengaturan dan konfigurasi terpandu, serta pembaruan otomatis.
- **Dikelola TI:** Pengaturan default dioptimalkan untuk kemampuan pengelolaan cepat.

Ikuti perintah tambahan untuk menyelesaikan pengaturan panel kontrol. Pengaturan dapat disesuaikan sepenuhnya setelah konfigurasi awal.

## 5. Mendownload dan menginstal perangkat lunak

**CATATAN:** Jangan sambungkan kabel USB hingga diminta untuk melakukannya.

### Metode 1: Download HP Easy Start (Windows dan macOS)

HP Easy Start akan mendeteksi printer, membantu memilih jenis sambungan printer (USB, Berkabel, atau Nirkabel), dan menginstal perangkat lunak.

1. Dari komputer, kunjungi [123.hp.com/laserjet](http://123.hp.com/laserjet), dan klik **Download**.
2. Jalankan HP Easy Start.
3. Bila diminta untuk memilih jenis sambungan, gunakan pilihan yang tepat untuk jenis sambungan.

**CATATAN:** Jika HP Easy Start tidak mendeteksi printer atau perangkat lunak tidak terinstal otomatis, lakukan **Metode 2: Secara manual download dari situs web dukungan printer (Windows)**.

### Metode 2: Secara manual download dari situs web dukungan printer (Windows)

1. Dari komputer, kunjungi [www.hp.com/support/colorljm479mfp](http://www.hp.com/support/colorljm479mfp).
2. Pilih **Software and drivers** (Perangkat lunak dan driver).
3. Download perangkat lunak untuk model printer dan sistem operasi Anda.
4. Jalankan file perangkat lunak dari folder tempat menyimpan file.
5. Ikuti petunjuk di layar untuk menginstal perangkat lunak.
6. Bila diminta untuk memilih jenis sambungan, gunakan pilihan yang tepat untuk jenis sambungan.

### ! Mengkonfigurasi alamat IP secara manual

Lihat panduan pengguna printer untuk mendapatkan informasi tentang cara mengkonfigurasi alamat IP secara manual di [www.hp.com/support/colorljm479mfp](http://www.hp.com/support/colorljm479mfp).

### Kiat-kiat mengatasi masalah (🔧) Sambungkan printer ke jaringan nirkabel (hanya model nirkabel)

Perangkat lunak penginstalan mungkin tidak mendeteksi printer selama pengaturan nirkabel. Ikuti langkah-langkah di bawah untuk menyambungkan printer ke jaringan nirkabel yang sama dengan komputer.

1. Dari layar Awal pada panel kontrol printer, usap tab di bagian atas layar ke arah bawah untuk membuka Dasbor, lalu sentuh ikon **Wireless** (Nirkabel) (📶).
2. Sentuh ikon **Setup** (Pengaturan) (⚙️).
3. Sentuh **Wireless Settings** (Pengaturan Nirkabel).
4. Sentuh **Wireless Setup Wizard** (Wizard Konfigurasi Nirkabel).
5. Ikuti petunjuk tampilan untuk menyelesaikan pengaturan.
6. Instal ulang perangkat lunak menggunakan **Metode 1** atau **Metode 2** di atas.

## 6. Pencetakan seluler (Opsional)

### Menyambungkan perangkat seluler ke jaringan nirkabel

Cetak dari perangkat seluler ke printer yang tersambung ke router/jaringan nirkabel. Sambungkan perangkat seluler ke jaringan nirkabel yang sama dengan printer.

Gunakan aplikasi HP Smart untuk mengkonfigurasi, mencetak, dan lainnya.

1. Kunjungi [123.hp.com](http://123.hp.com) atau pindai kode QR.
2. Instal aplikasi HP Smart.
3. Jalankan aplikasi HP Smart dan ikuti petunjuk di layar untuk menyambungkan, mengkonfigurasi, mencetak, dan lainnya.



**CATATAN:** Aplikasi HP Smart mungkin tidak tersedia untuk semua sistem operasi seluler.


#### HP Roam

Untuk informasi tentang penggunaan aplikasi cetak seluler HP Roam, kunjungi [hp.com/go/roam](http://hp.com/go/roam) pada perangkat seluler.

### Sambungkan perangkat seluler menggunakan Wi-Fi Direct (hanya model printer nirkabel)

Cetak menggunakan Wi-Fi Direct dengan tanpa koneksi router/jaringan.

#### 1. Aktifkan Wi-Fi Direct di printer Anda

1. Dari layar Awal pada panel kontrol printer, usap tab di bagian atas layar ke arah bawah untuk membuka Dasbor, lalu sentuh ikon Wi-Fi Direct .
2. Di layar **Detail Wi-Fi Direct**, buka menu **Setelan Wi-Fi Direct**. Sentuh sakelar untuk mengaktifkan Status Wi-Direct ke **On**.
3. Catat nama Wi-Fi Direct dan kata sandi Wi-Fi Direct dari panel kontrol printer.

#### 2. Temukan printer dari perangkat

1. Dari perangkat seluler, buka menu **Pengaturan** perangkat, dan cari nama Wi-Fi Direct yang ditemukan dari panel kontrol printer.
2. Pilih nama printer yang benar, dan masukkan kata sandi Wi-Fi Direct jika diminta.

## Selengkapnya tentang pencetakan seluler


Produk ini mendukung AirPrint dan Wi-Fi Direct. Untuk informasi lebih lanjut tentang pencetakan seluler, kunjungi [www.hp.com/go/LaserJetMobilePrinting](http://www.hp.com/go/LaserJetMobilePrinting) atau pindai kode QR.




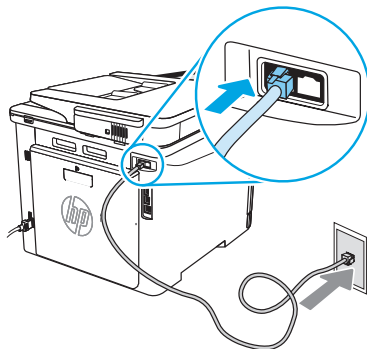
## 7. Mengonfigurasi faks (hanya model faks - opsional)

### 7.1 Menyambungkan printer



Printer ini adalah perangkat analog. HP menganjurkan penggunaan printer pada saluran telepon analog khusus.

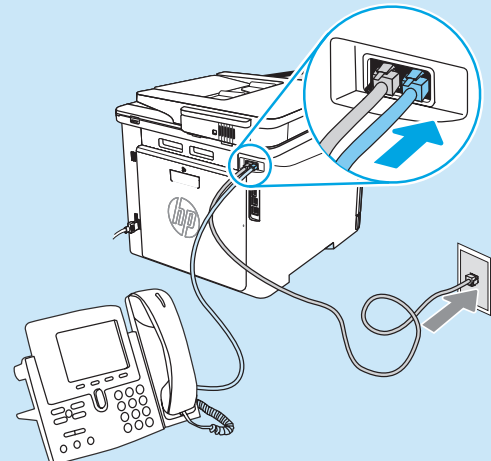
 **CATATAN:** Adapter mungkin diperlukan di beberapa negara/kawasan tertentu untuk menggunakan kabel telepon yang disertakan bersama printer.

Sambungkan kabel telepon yang disertakan bersama printer ke port faks  pada printer dan ke soket telepon di dinding.



### Bagaimana menyambungkan mesin penjawab atau telepon ekstensi?

1. Lepas sambungan kabel telepon mesin penjawab dari soket telepon, lalu sambungkan ke port telepon  pada printer.
2. Sambungkan kabel telepon yang disertakan bersama printer ke port faks  pada printer dan ke soket telepon di dinding.





## 📌 Bagaimana cara mengkonfigurasi printer HP dalam lingkungan telepon digital?

Printer HP dirancang khusus untuk digunakan bersama layanan telepon analog biasa. Untuk lingkungan telepon digital (misalnya, DSL/ADSL, PBX, ISDN, atau FoIP), filter atau konverter digital ke analog mungkin diperlukan bila mengkonfigurasi printer untuk faks.

**CATATAN:** Berdasarkan perusahaan telepon, printer mungkin tidak kompatibel dengan semua saluran atau penyedia layanan digital, di semua lingkungan digital, atau dengan semua konverter digital ke analog. Hubungi perusahaan telepon untuk menentukan pilihan konfigurasi terbaik.

**CATATAN:** Saat mengkonfigurasi deteksi pola dering dalam sistem telepon PBX yang memiliki pola dering yang berbeda untuk panggilan internal dan eksternal, pastikan Anda menekan nomor faks printer menggunakan nomor eksternal untuk merekam pola dering.


## 7.2 Mengkonfigurasi printer

Mengkonfigurasi pengaturan waktu, tanggal, dan kepala faks diperlukan agar dapat menggunakan fitur faks. Metode termudah digunakan pada **Wizard Pengaturan Faks** pada perangkat lunak produk. Cara lainnya, konfigurasi pengaturan tersebut dan pengaturan faks dasar lainnya menggunakan panel kontrol.

### Wizard Pengaturan Faks (perangkat lunak)

1. Buka HP Printer Assistant.
  - Windows 10: Dari menu Start (Mulai), klik **All Apps** (Semua Aplikasi) (jika ada), klik **HP**, lalu pilih nama printer.
  - Windows 8.1: Klik panah bawah pada sudut kiri bawah layar Start (Mulai), lalu pilih nama printer.
  - Windows 8: Klik kanan di area kosong pada layar Start (Mulai), klik **All Apps** (Semua Aplikasi) pada bilah aplikasi, lalu pilih nama printer.
  - Windows 7: Dari desktop komputer, klik **Start** (Mulai), pilih **All Programs** (Semua Program), klik **HP**, klik folder untuk printer, pilih ikon dengan nama printer, lalu buka HP Printer Assistant.
2. Pada HP Printer Assistant, pilih **Fax** (Faks), lalu pilih **Fax Setup Wizard** (Wizard Konfigurasi Faks).
3. Ikuti petunjuk di layar untuk mengkonfigurasi pengaturan faks.

### Panel Kontrol

1. Dari layar Awal pada panel kontrol printer, usap tab di bagian atas layar ke arah bawah untuk membuka Dasbor, lalu sentuh ikon Fax Setup  (Pengaturan Faks).
2. Sentuh **Setup Wizard** (Wizard Konfigurasi).
3. Masukkan nomor faks Anda. Jumlah maksimal karakter untuk nomor faks adalah 20.
4. Masukkan nama untuk mesin faks Anda. Jumlah maksimal karakter untuk nama mesin faks adalah 25.
5. Ikuti petunjuk di layar yang ada untuk mengkonfigurasi pengaturan faks.

### 📌 Selengkapnya!

Untuk informasi selengkapnya tentang cara lain mengirim faks, seperti menjadwalkan faks untuk dikirim dari komputer, lihat panduan pengguna atau kunjungi [www.hp.com/support/colorljm479mfp](http://www.hp.com/support/colorljm479mfp).

## 8. Menggunakan fitur pindai

### Windows

Gunakan pintasan aplikasi HP Scan di Desktop, atau buka HP Printer Assistant, pilih **Scan** (Pindai), lalu pilih **Scan a Document or Photo** (Pindai Dokumen atau Foto).

### macOS

Buka folder **Applications** (Aplikasi) dan buka **HP Easy Scan**.

## Mengatasi masalah

### Panduan pengguna

Panduan pengguna mencakup informasi tentang penggunaan dan cara mengatasi masalah printer. Informasi ini tersedia di Web:

1. Kunjungi [www.hp.com/support/colorljm479mfp](http://www.hp.com/support/colorljm479mfp).
2. Pilih printer jika diminta, lalu klik **User Guides** (Panduan Pengguna).

### Memeriksa pembaruan firmware

1. Kunjungi [www.hp.com/support/colorljm479mfp](http://www.hp.com/support/colorljm479mfp).
2. Pilih printer jika diminta, lalu klik **Software and Drivers** (Perangkat Lunak dan Driver).
3. Pilih sistem operasi, lalu klik tombol **Next** (Berikutnya).
4. Pilih **Firmware**, lalu klik tombol **Download**.

### Bantuan panel kontrol

Untuk mengakses topik bantuan, sentuh tombol Help (Bantuan)  pada panel kontrol printer.



### Sumber dukungan tambahan

Untuk bantuan secara menyeluruh dari HP terkait printer, kunjungi: [www.hp.com/support/colorljm479mfp](http://www.hp.com/support/colorljm479mfp)

- Mengatasi masalah
- Menemukan petunjuk konfigurasi tingkat lanjut
- Mendownload pembaruan perangkat lunak
- Mengikuti forum dukungan
- Mencari informasi jaminan dan peraturan
- Mengakses sumber pencetakan seluruh

Untuk mempelajari lebih lanjut tentang printer, kunjungi:

[www.hp.com/support/colorljm479MFPPFAQ](http://www.hp.com/support/colorljm479MFPPFAQ) atau pindai kode QR.



English.....1  
 简体中文.....4  
 Bahasa Indonesia.....7  
**한국어 .....10**  
 ไทย .....13  
 繁體中文.....16  
 Tiếng Việt .....19



# Color LaserJet Pro MFP M479

## 시작 설명서



[www.hp.com/support/colorljm479mfp](http://www.hp.com/support/colorljm479mfp)



[www.register.hp.com](http://www.register.hp.com)

**참고:** 프린터를 설치하고 소프트웨어 드라이버를 다운로드하려면 인터넷을 연결해야 합니다.

### FAQ

자주 묻는 질문은 [www.hp.com/support/colorljm479MFPFAQ](http://www.hp.com/support/colorljm479MFPFAQ)로 이동합니다. 또는 QR 코드를 스캔합니다.



### ! 중요:

프린터 하드웨어 설치 포스터의 1~3단계를 수행한 다음 4단계를 진행하십시오.



## 4. 제어판 설정

프린터를 켜 후 초기화될 때까지 기다립니다. 터치 스크린 제어판을 탐색하려면 터치, 스와이프, 스크롤 제스처를 사용합니다. 제어판의 메시지에 따라 언어, 국가/지역, 날짜/시간 및 자가 관리 또는 IT 관리를 구성합니다.

- 자가 관리: 설정 안내와 구성 단계 및 자동 업데이트를 포함하여 대부분의 사용자에게 최적화된 기본 설정입니다.
- IT 관리: 장비 관리성에 최적화된 기본 설정입니다.

추가 메시지에 따라 제어판 설치를 완료합니다.  
 설정은 초기 설정 후 모두 사용자 요구에 맞게 설정할 수 있습니다.

## 5. 소프트웨어 다운로드 및 설치

**참고:** 알림이 표시되기 전까지는 USB 케이블을 연결하지 마십시오.

### 방법 1: HP Easy Start 다운로드 (Windows 및 macOS)

HP Easy Start는 프린터를 감지하고 프린터 연결 유형(USB, 유선 또는 무선)의 선택을 지원하며, 소프트웨어를 설치합니다.

1. 컴퓨터에서 [123.hp.com/laserjet](http://123.hp.com/laserjet)으로 이동한 다음 다운로드를 클릭합니다.
2. HP Easy Start를 실행합니다.
3. 연결 유형을 선택하라는 메시지가 표시되면 연결 유형에 적합한 옵션을 선택합니다.

**참고:** HP Easy Start가 프린터를 감지하지 못하거나 소프트웨어가 자동으로 설치되지 않는 경우에는 **방법 2: 프린터 지원 웹 사이트 (Windows)에서 수동으로 다운로드**합니다.



### 방법 2: 프린터 지원 웹 사이트(Windows)에서 수동으로 다운로드

1. 컴퓨터에서, [www.hp.com/support/colorljm479mfp](http://www.hp.com/support/colorljm479mfp)로 이동합니다.
2. 소프트웨어 및 드라이버를 선택합니다.
3. 해당 프린터 모델 및 운영 체제용 소프트웨어를 다운로드합니다.
4. 파일이 저장된 폴더에서 소프트웨어 파일을 실행합니다.
5. 화면의 안내에 따라 소프트웨어를 설치합니다.
6. 연결 유형을 선택하라는 메시지가 표시되면 연결 유형에 적합한 옵션을 선택합니다.

### ! IP 주소 수동으로 구성

수동으로 IP 주소를 구성하는 방법에 대한 자세한 내용은 프린터 사용 설명서([www.hp.com/support/colorljm479mfp](http://www.hp.com/support/colorljm479mfp))를 참조하십시오.

### 문제 해결팁 (📶) 무선 네트워크에 프린터 연결(무선 모델만 해당)

무선 설치하는 동안 설치 소프트웨어가 프린터를 감지하지 못할 수도 있습니다. 아래의 단계에 따라 프린터를 컴퓨터와 동일한 무선 네트워크에 연결합니다.

1. 프린터 제어판의 홈 화면에서 화면 상단의 탭을 아래로 밀어서 대시보드를 연 다음에 무선(📶) 아이콘을 누릅니다.
2. 설치(🔧) 아이콘을 누릅니다.
3. 무선 설정을 누릅니다.
4. 무선 설정 마법사 항목을 누릅니다.
5. 디스플레이의 설명에 따라 설치를 완료합니다.
6. 위의 **방법 1** 또는 **방법 2**를 사용하여 소프트웨어를 다시 설치합니다.

## 6. 모바일 인쇄(선택 사항)

### 무선 네트워크에 모바일 장치 연결

모바일 장치에서 무선 라우터/네트워크에 연결되어 있는 프린터에 인쇄합니다. 모바일 장치를 프린터와 동일한 무선 네트워크에 연결합니다. HP Smart 앱을 사용하여 연결, 설정 및 인쇄 등을 실시합니다.

1. [123.hp.com](http://123.hp.com)로 이동하거나 QR 코드를 스캔합니다.
2. HP Smart 앱을 설치합니다.
3. HP Smart 앱을 실행하여 화면에 표시되는 안내에 따라 연결, 설정 및 인쇄 등을 실시합니다.



**참고:** HP Smart 앱을 모든 모바일 운영 체제에서 사용할 수 있는 것은 아닙니다.


### HP 롬

HP Roam 모바일 인쇄 앱의 사용에 대한 내용은 모바일 장치의 [hp.com/go/roam](http://hp.com/go/roam)로 이동합니다.

### Wi-Fi Direct를 사용하여 모바일 장치 연결 (무선 프린터 모델만 해당)

라우터/네트워크를 연결하지 않고 Wi-Fi Direct를 사용하여 인쇄합니다.

#### 1. 프린터에서 Wi-Fi Direct 기능 사용

1. 프린터 제어판 홈 화면에서 화면 상단에 있는 탭을 아래로 밀어 대시보드를 연 다음 Wi-Fi Direct 아이콘  아이콘을 누릅니다.
2. Wi-Fi Direct 세부 사항 화면에서 Wi-Fi Direct 설정 메뉴를 엽니다. 스위치를 눌러 Wi-Fi Direct Status를 켜기로 돌립니다.
3. 프린터 제어판에서 Wi-Fi Direct 이름 및 Wi-Fi Direct 암호에 주목합니다.

#### 2. 장치에서 프린터 찾기

1. 모바일 장치에서, 장치 설정 메뉴로 이동한 다음 프린터 제어판에서 확인되는 Wi-Fi Direct 이름을 검색합니다.
2. 정확한 프린터 이름을 선택한 후 메시지가 표시되면 Wi-Fi Direct 암호를 입력합니다.

## ① 모바일 인쇄에 대해 자세히 알아보기


제품은 AirPrint 및 Wi-Fi Direct를 지원합니다. 자세한 모바일 인쇄 정보는 [www.hp.com/go/LaserJetMobilePrinting](http://www.hp.com/go/LaserJetMobilePrinting)로 이동하거나 QR 코드를 스캔합니다.

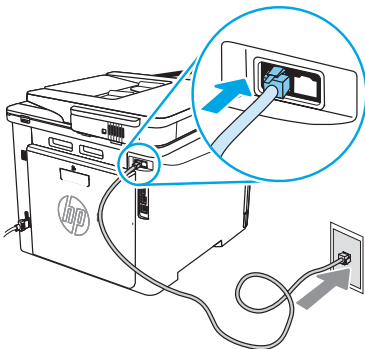


## 7. 팩스 설정(팩스 모델만 해당 - 선택 사항)


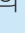
### 7.1 프린터 연결

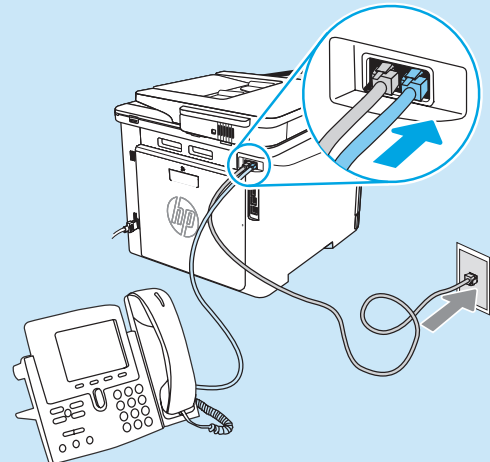
이 프린터는 아날로그 장치입니다. HP는 전용 아날로그 전화선에서 이 프린터를 사용하는 것이 좋습니다.

**참고:** 일부 국가/지역에서는 프린터와 함께 제공된 전화 코드에 대한 어댑터가 필요할 수 있습니다. 프린터와 함께 제공된 전화 코드를 프린터의 팩스 포트 와 벽면의 전화 잭에 연결합니다.



### ① 자동 응답기나 내선 전화는 어떻게 연결하나요?

1. 전화 잭에서 자동 응답기 전화 코드를 분리한 다음 프린터의 전화 포트 에 연결합니다.
2. 프린터와 함께 제공된 전화 코드를 프린터의 팩스 포트 와 벽면의 전화 잭에 연결합니다.



## ① 디지털 전화기 환경에서는 HP 프린터를 어떻게 설정하나요?

HP 프린터는 기존 아날로그 전화 서비스와 함께 사용할 수 있도록 개발되었습니다. 디지털 전화기 환경(예: DSL/ADSL, PBX, ISDN, 또는 FoIP 등)의 경우 팩스용 프린터를 설치할 때 디지털-아날로그 필터 또는 변환기가 필요할 수 있습니다.

**참고:** 통신 업체에 따라 프린터가 모든 디지털 서비스 회선이나 제공업체, 모든 디지털 환경 또는 모든 디지털-아날로그 변환기와 호환되지 않을 수 있습니다. 가장 적합한 설치 옵션을 확인하려면 통신 업체에 문의하십시오.

**참고:** 내선 및 외선 통화에 대해 다른 벨소리 종류를 가진 PBX 전화 시스템에 벨소리 종류 감지 기능을 설정할 때 외부 번호를 사용하여 프린터 팩스 번호로 전화를 걸어 벨소리 종류를 기록하십시오.


## 7.2 프린터 구성

팩스 기능을 사용하려면 팩스 시간, 날짜 및 머리글 설정을 구성해야 합니다. 가장 쉬운 방법은 제품 소프트웨어의 **팩스 설정 마법사**를 사용하는 것입니다. 또는 제어판을 사용하여 여러 가지 기본 팩스 설정을 구성합니다.

### 팩스 설정 마법사(소프트웨어)

1. HP 프린터 길잡이를 엽니다.
  - Windows 10: 시작 메뉴에서, **모든 앱**(있는 경우)을 클릭하고 **HP**를 클릭한 다음 프린터 이름을 선택합니다.
  - Windows 8.1: 시작 화면의 왼쪽 하단에 있는 아래쪽 화살표를 클릭한 다음 프린터 이름을 선택합니다.
  - Windows 8: 시작 화면의 빈 공간을 마우스 오른쪽 버튼으로 클릭하고 앱 표시줄에서 **모든 앱**을 클릭한 다음 프린터 이름을 선택합니다.
  - Windows 7: 컴퓨터 바탕 화면에서 **시작**을 클릭하여 **모든 프로그램**을 선택한 다음 **HP**, 해당 프린터 폴더를 차례대로 클릭하고 프린터 이름이 있는 아이콘을 선택한 다음 HP Printer Assistant를 엽니다.
2. HP 프린터 길잡이에서 **팩스**를 누른 다음 **팩스 설정 마법사**를 선택합니다.
3. 화면의 지침을 따라 팩스 설정을 구성합니다.

### 제어판

1. 프린터 제어판의 홈 화면에서 화면 상단의 탭을 아래로 밀어서 대시보드를 연 다음에 HP ePrint  아이콘을 누릅니다.
2. **설치 마법사**를 누릅니다.
3. 자신의 팩스 번호 입력 팩스 번호로 최대 20자를 사용할 수 있습니다.
4. 팩스기에 대한 이름을 입력합니다. 팩스기에 대한 문자 수는 최대 25자입니다.
5. 화면의 지침을 따라 팩스 설정을 구성합니다.

## ① 자세히 알아보기!

나중에 보내도록 팩스를 예약하거나 컴퓨터에서 팩스 보내기 등 팩스를 보내는 다양한 방법에 대한 자세한 내용은 사용 설명서 [www.hp.com/support/colorljm479mfp](http://www.hp.com/support/colorljm479mfp)를 참조하십시오.

## 8. 스캔 기능 사용

### Windows

데스크탑에서 HP Scan 응용 프로그램 단축키를 사용하거나 HP Printer Assistant를 열고 **스캔**과 **문서** 또는 **사진 스캔**을 차례로 선택합니다.

### macOS

Applications 폴더로 이동한 다음 **HP Easy Scan**을 엽니다.

## 문제 해결

### 사용 설명서

사용 설명서에 프린터 사용법 및 문제 해결 정보가 포함되어 있습니다. 웹에서 사용할 수 있습니다.

1. [www.hp.com/support/colorljm479mfp](http://www.hp.com/support/colorljm479mfp)로 이동합니다.
2. 메시지가 표시되면 프린터를 선택하고 **사용 설명서**를 클릭합니다.

### 펌웨어 업데이트 확인

1. [www.hp.com/support/colorljm479mfp](http://www.hp.com/support/colorljm479mfp)로 이동합니다.
2. 메시지가 표시되면 프린터를 선택하고 **소프트웨어 및 드라이버**를 클릭합니다.
3. 운영 체제를 선택하고 **다음** 버튼을 클릭합니다.
4. **펌웨어**를 선택하고 **다운로드** 버튼을 클릭합니다.

### 제어판 도움말

도움말 주제에 액세스하려면, 프린터 제어판에서 도움말 ? 버튼을 누릅니다.



### 추가 지원 리소스

해당 프린터에 대한 HP 전체 도움말은 다음으로 이동하십시오. [www.hp.com/support/colorljm479mfp](http://www.hp.com/support/colorljm479mfp)

- 문제 해결
- 고급 구성 지침 찾기
- 소프트웨어 업데이트 다운로드
- 지원 포럼 가입
- 보증 및 규정 정보 찾기
- 모바일 인쇄 리소스 액세스

프린터에 대해 자세히 알아보려면,

[www.hp.com/support/colorljm479MFPFAQ](http://www.hp.com/support/colorljm479MFPFAQ)로 이동하거나 QR 코드를 스캔합니다.





# Color LaserJet Pro MFP M479

## คู่มือเริ่มต้นใช้งาน



[www.hp.com/support/colorljm479mfp](http://www.hp.com/support/colorljm479mfp)



[www.register.hp.com](http://www.register.hp.com)

English.....	1
简体中文.....	4
Bahasa Indonesia.....	7
한국어.....	10
ไทย.....	13
繁體中文.....	16
Tiếng Việt.....	19

หมายเหตุ: จำเป็นต้องเชื่อมต่ออินเทอร์เน็ตเพื่อตั้งค่าเครื่องพิมพ์และดาวน์โหลดซอฟต์แวร์ไดรเวอร์

### ❗ คำถามที่พบบ่อย

สำหรับคำถามที่พบบ่อย ให้ไปที่ [www.hp.com/support/colorljm479MFPFAQ](http://www.hp.com/support/colorljm479MFPFAQ) หรือสแกน QR โค้ด



### ❗ สิ่งสำคัญ:

ดำเนินการตาม **ขั้นตอนที่ 1 - 3** บนโปสเตอร์การตั้งค่าฮาร์ดแวร์ เครื่องพิมพ์ก่อน แล้วจึง ดำเนินการต่อที่ **ขั้นตอนที่ 4**



## 4. ตั้งค่าบนแผงควบคุม

หลังจากเปิดเครื่องพิมพ์แล้ว ให้รอจนกว่าระบบจะเริ่มต้น สำหรับการนำทางโดยใช้แผงควบคุมสำหรับหน้าจอสัมผัส ให้ใช้ท่าทางการแตะ กวาด และเลื่อน ปฏิบัติตามพรอมต์บนแผงควบคุมเพื่อกำหนดค่า ภาษา, ประเทศ/ภูมิภาค, วัน/เวลา และ จัดการด้วยตนเอง หรือ จัดการด้วย IT

- จัดการด้วยตนเอง: การตั้งค่าเริ่มต้นที่มีประสิทธิภาพสำหรับผู้ใช้งานส่วนใหญ่ โดยขั้นตอนการตั้งค่าและการกำหนดค่าแบบมีคำแนะนำและการอัปเดตอัตโนมัติ
- จัดการด้วย IT: การตั้งค่าเริ่มต้นที่ปรับให้เหมาะสม เพื่อความสามารถทางการจัดการที่รวดเร็ว

ปฏิบัติตามพรอมต์เพิ่มเติมเพื่อดำเนินการตั้งค่าแผงควบคุมให้เสร็จสมบูรณ์

และสามารถปรับแต่งการตั้งค่าได้ทั้งหมดหลังจากการตั้งค่าในครั้งแรก

## 5. ดาวน์โหลดและติดตั้งซอฟต์แวร์

หมายเหตุ: อย่าเพิ่งต่อสาย USB จนกว่าโปรแกรมการติดตั้งจะพรอมต์ ให้ต่อ

### วิธีที่ 1: ดาวน์โหลด HP Easy Start (Windows และ macOS)

HP Easy Start จะตรวจหาเครื่องพิมพ์ ช่วยเลือกประเภทของการเชื่อมต่อกับเครื่องพิมพ์ (USB, การเชื่อมต่อแบบไร้สายหรือแบบไร้สาย) และติดตั้งซอฟต์แวร์

- จากคอมพิวเตอร์ไปที่ [123.hp.com/laserjet](http://123.hp.com/laserjet) และคลิก **Download** (ดาวน์โหลด)
- เปิด HP Easy Start
- เมื่อพรอมต์ ให้เลือกประเภทของการเชื่อมต่อ โปรดเลือกตัวเลือกที่เหมาะสมสำหรับประเภทของการเชื่อมต่อ

หมายเหตุ: หาก HP Easy Start ไม่พบเครื่องพิมพ์หรือซอฟต์แวร์ไม่ติดตั้งโดยอัตโนมัติ ให้ไปที่ **วิธีที่ 2: ดาวน์โหลดด้วยตัวเองจากเว็บไซต์สนับสนุนเครื่องพิมพ์ (Windows)**

### วิธีที่ 2: ดาวน์โหลดด้วยตัวเองจากเว็บไซต์สนับสนุนเครื่องพิมพ์ (Windows)

- จากคอมพิวเตอร์ไปที่ [www.hp.com/support/colorljm479mfp](http://www.hp.com/support/colorljm479mfp)
- เลือก **Software and drivers** (ซอฟต์แวร์ไดรเวอร์)
- ดาวน์โหลดซอฟต์แวร์สำหรับรุ่นเครื่องพิมพ์และระบบปฏิบัติการของคุณ
- เปิดไฟล์ซอฟต์แวร์จากโฟลเดอร์ที่บันทึกไฟล์ไว้
- ทำตามคำแนะนำบนหน้าจอเพื่อติดตั้งซอฟต์แวร์
- เมื่อพรอมต์ ให้เลือกประเภทของการเชื่อมต่อ โปรดเลือกตัวเลือกที่เหมาะสมสำหรับประเภทของการเชื่อมต่อ

### ❗ การกำหนดค่า IP แอดเดรสด้วยตนเอง

โปรดดูข้อมูลเกี่ยวกับวิธีการกำหนดที่อยู่ IP ด้วยตนเองในคู่มือผู้ใช้เครื่องพิมพ์ที่ [www.hp.com/support/colorljm479mfp](http://www.hp.com/support/colorljm479mfp)

## คำแนะนำในการแก้ไขปัญหา (๑) เชื่อมต่อเครื่องพิมพ์เข้ากับเครือข่ายแบบไร้สาย (เฉพาะรุ่นไร้สายเท่านั้น)

ซอฟต์แวร์การติดตั้งอาจไม่พบเครื่องพิมพ์ระหว่างการตั้งค่าเครือข่ายแบบไร้สาย ให้ปฏิบัติตามขั้นตอนด้านล่างเพื่อเชื่อมต่อเครื่องพิมพ์กับเครือข่ายแบบไร้สายเดียวกันกับคอมพิวเตอร์

- จากหน้าจอลูกบนแผงควบคุมของเครื่องพิมพ์ ให้ปิดแท็บด้านบนสุดของหน้าจอเพื่อเปิดแดชบอร์ด แล้วจึงแตะไอคอน การเชื่อมต่อแบบไร้สาย (๑)
- แตะไอคอน การตั้งค่า
- แตะ การตั้งค่าการเชื่อมต่อแบบไร้สาย
- แตะ ตัวช่วยตั้งค่าเครือข่ายไร้สาย
- ทำตามคำแนะนำบนหน้าจอเพื่อดำเนินการตั้งค่าให้เสร็จสมบูรณ์
- ติดตั้งซอฟต์แวร์อีกครั้งโดยใช้ **วิธีที่ 1** หรือ **วิธีที่ 2** ข้างต้น

## 6. คู่มือ การพิมพ์ผ่านอุปกรณ์เคลื่อนที่ (ไม่จำเป็น)

### เชื่อมต่ออุปกรณ์เคลื่อนที่กับเครือข่ายไร้สาย

ส่งพิมพ์จากอุปกรณ์เคลื่อนที่ไปยังเครื่องพิมพ์ที่เชื่อมต่ออยู่กับเราเตอร์/เครือข่ายแบบไร้สาย เชื่อมต่ออุปกรณ์เคลื่อนที่กับเครือข่ายไร้สายเดียวกันกับเครื่องพิมพ์

ใช้แอป HP Smart เพื่อดำเนินการตั้งค่า พิมพ์ และอื่นๆ

1. ไปที่ [123.hp.com](http://123.hp.com) หรือสแกน QR โค้ด
2. ติดตั้งแอป HP Smart
3. เรียกใช้แอป HP Smart และทำตามคำแนะนำบนหน้าจอเพื่อดำเนินการเชื่อมต่อ ตั้งค่า พิมพ์ และอื่นๆ



หมายเหตุ: แอป HP Smart อาจไม่สามารถใช้ได้กับระบบปฏิบัติการของอุปกรณ์เคลื่อนที่ทั้งหมด

### HP Roam

หากต้องการข้อมูลเพิ่มเติมเกี่ยวกับการใช้แอปการพิมพ์ผ่านอุปกรณ์เคลื่อนที่ HP Roam ให้ไปที่ [hp.com/go/roam](http://hp.com/go/roam) บนอุปกรณ์เคลื่อนที่ของคุณ

### เชื่อมต่ออุปกรณ์เคลื่อนที่โดยใช้ Wi-Fi Direct (เครื่องพิมพ์รุ่นไร้สายเท่านั้น)

พิมพ์โดยใช้ Wi-Fi Direct โดยไม่จำเป็นต้องเชื่อมต่อเราเตอร์/เครือข่าย

#### 1. เปิดใช้งานคุณสมบัติ Wi-Fi Direct ในเครื่องพิมพ์

1. จากหน้าจอหลักบนแผงควบคุมของเครื่องพิมพ์ ให้ปิดเห็นด้านบนสุดของหน้าจอลงเพื่อเปิดแคชบอร์ด แล้วจึงแตะไอคอน Wi-Fi Direct
2. บนหน้าจอ รายละเอียด Wi-Fi Direct เปิดเมนู การตั้งค่า Wi-Fi Direct ให้แตะสวิตช์เพื่อเปลี่ยนสถานะของ Wi-Direct ไม้ On
3. จดชื่อของ Wi-Fi Direct และรหัสผ่านของ Wi-Fi Direct จากแผงควบคุมของเครื่องพิมพ์

#### 2. ค้นหาเครื่องพิมพ์จากอุปกรณ์ของคุณ

1. จากอุปกรณ์เคลื่อนที่ ให้ไปที่เมนู การตั้งค่า ของอุปกรณ์ และค้นหาชื่อ Wi-Fi Direct ที่คุณพบจากแผงควบคุมเครื่องพิมพ์
2. เลือกชื่อเครื่องพิมพ์ที่ถูกต้อง และใส่รหัสผ่าน Wi-Fi Direct หากได้รับพร้อมดี

## ❗ ศึกษาเพิ่มเติมเกี่ยวกับการพิมพ์ผ่านอุปกรณ์เคลื่อนที่

เครื่องพิมพ์นี้สนับสนุน AirPrint และ Wi-Fi Direct หากต้องการข้อมูลเพิ่มเติมเกี่ยวกับการพิมพ์ผ่านอุปกรณ์เคลื่อนที่ ให้ไปที่ [www.hp.com/go/LaserJetMobilePrinting](http://www.hp.com/go/LaserJetMobilePrinting) หรือสแกน QR โค้ด



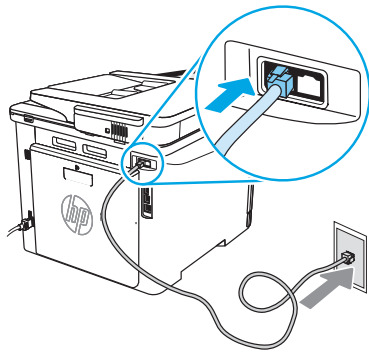
## 7. การตั้งค่าโทรสาร (เฉพาะรุ่นโทรสารเท่านั้น - ไม่จำเป็น)

### 7.1 เชื่อมต่อเครื่องพิมพ์

เครื่องพิมพ์นี้เป็นอุปกรณ์แบบอะนาล็อก HP จึงขอแนะนำให้ผู้ใช้เครื่องพิมพ์กับสายโทรศัพท์อะนาล็อกที่แยกเฉพาะ

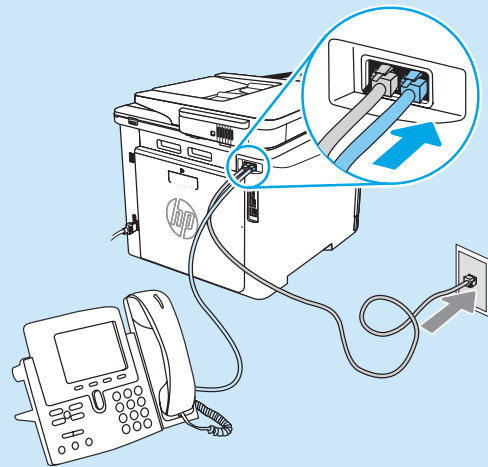
**หมายเหตุ:** ในบางประเทศ/พื้นที่อาจต้องใช้อะแดปเตอร์กับสายโทรศัพท์ที่มาพร้อมกับเครื่องพิมพ์

ต่อสายโทรศัพท์ที่มาพร้อมกับเครื่องพิมพ์เข้ากับพอร์ตโทรสาร บนเครื่องพิมพ์ และต่อเข้ากับแจ็คโทรศัพท์บนผนังอีกครั้ง



### ❗ ฉันจะเชื่อมต่อเครื่องตอบรับหรือโทรศัพท์ภายในได้อย่างไร

1. ถอดสายโทรศัพท์ของเครื่องตอบรับออกจากแจ็คโทรศัพท์ จากนั้นให้ต่อสายดังกล่าวเข้ากับพอร์ตโทรศัพท์ บนเครื่องพิมพ์
2. ต่อสายโทรศัพท์ที่มาพร้อมกับเครื่องพิมพ์เข้ากับพอร์ตโทรสาร บนเครื่องพิมพ์ และต่อเข้ากับแจ็คโทรศัพท์บนผนัง



## ❗ ฉันจะตั้งค่าเครื่องพิมพ์ HP ในสภาพแวดล้อมโทรศัพท์ ดิจิตอลได้อย่างไร

เครื่องพิมพ์ HP ออกแบบมาสำหรับใช้กับระบบโทรศัพท์แบบอะนาล็อกแบบดั้งเดิม โดยเฉพาะ สำหรับสภาพแวดล้อมโทรศัพท์ดิจิตอล (เช่น DSL/ADSL, PBX, ISDN หรือ FoIP) อาจจำเป็นต้องใช้ตัวกรองสัญญาณหรือตัวแปลงสัญญาณดิจิตอลเป็นอะนาล็อกเมื่อมีการตั้งค่าเครื่องพิมพ์สำหรับเครื่องโทรศัพท์

**หมายเหตุ:** เครื่องพิมพ์อาจทำงานร่วมกับสายบริการหรือผู้ให้บริการดิจิตอลบางรายไม่ได้ หรืออาจทำงานในสภาพแวดล้อมดิจิตอลบางอย่างไม่ได้ หรืออาจทำงานร่วมกับตัวแปลงสัญญาณดิจิตอลเป็นอะนาล็อกบางตัวไม่ได้ ทั้งนี้ขึ้นอยู่กับบริษัทโทรศัพท์นั้นๆ ให้ติดต่อบริษัทโทรศัพท์ เพื่อกำหนดตัวเลือกการตั้งค่าที่ดีที่สุด

**หมายเหตุ:** เมื่อตั้งค่าการตรวจพบรูปแบบเสียงกริ่งในระบบโทรศัพท์ PBX ที่ใช้รูปแบบเสียงเรียกที่แตกต่างกันระหว่างโทรศัพท์ภายในและภายนอก ในการบันทึกรูปแบบเสียงเรียก ให้ใช้หมายเลขโทรสารภายนอกเป็นหมายเลขหมุนโทรสารของเครื่องพิมพ์


## 7.2 กำหนดค่าเครื่องพิมพ์

การกำหนดค่าเวลา วันที่ และหัวเรื่องโทรสารที่จำเป็นต่อการใช้คุณสมบัติโทรสาร วิธีที่ง่ายที่สุดคือการใช้ **ตัวช่วยตั้งค่าโทรสาร** ในซอฟต์แวร์ของผลิตภัณฑ์ หรือกำหนดค่าเหล่านี้และการตั้งค่าพื้นฐานอื่นๆ สำหรับโทรสารโดยใช้แผงควบคุม

### ตัวช่วยตั้งค่าโทรสาร (ซอฟต์แวร์)

- เปิด HP Printer Assistant
  - Windows 10: จากเมนูเริ่ม ให้คลิก **แอปทั้งหมด** (ถ้ามี) คลิก **HP** จากนั้น ให้เลือกชื่อเครื่องพิมพ์
  - Windows 8.1: คลิกลูกศรลงในมุมซ้ายล่างของหน้าจอเริ่ม แล้วเลือกชื่อเครื่องพิมพ์
  - Windows 8: คลิกขวาในพื้นที่ว่างบนหน้าจอเริ่ม คลิก **แอปทั้งหมด** บนแถบแอป จากนั้นเลือกชื่อเครื่องพิมพ์
  - Windows 7: จากเดสก์ท็อปของคอมพิวเตอร์ ให้คลิก **เริ่ม** เลือก **All Programs** (โปรแกรมทั้งหมด) คลิก **HP** คลิกโฟลเดอร์สำหรับเครื่องพิมพ์ เลือกไอคอนที่มีชื่อของเครื่องพิมพ์ จากนั้นเปิด HP Printer Assistant
- ใน HP Printer Assistant ให้เลือก **โทรสาร** จากนั้นเลือก **ตัวช่วยตั้งค่าโทรสาร**
- ดำเนินการตามคำแนะนำบนหน้าจอเพื่อกำหนดค่าโทรสาร

### แผงควบคุม

- จากหน้าจอลูกบนแผงควบคุมของเครื่องพิมพ์ ให้ปิดแท็บด้านบนสุดของหน้าจอลงเพื่อเปิดเดสทอป แล้วจึงแตะไอคอนการตั้งค่าโทรสาร 
- แตะ **ตัวช่วยตั้งค่า**
- ใส่หมายเลขโทรสารของคุณ หมายเลขโทรสารมีจำนวนตัวอักษรสูงสุดได้ 20 ตัวอักษร
- ใส่ชื่อสำหรับเครื่องโทรศัพท์ของคุณ จำนวนอักขระสูงสุดสำหรับชื่อโทรสารคือ 25 อักขระ
- ดำเนินการตามคำแนะนำบนหน้าจอที่เหลืออยู่เพื่อกำหนดค่าโทรสาร

### ❗ ศึกษาเพิ่มเติม!

สำหรับข้อมูลเพิ่มเติมเกี่ยวกับวิธีอื่นๆ ในการส่งแฟกซ์ เช่น การจัดการเวลาส่งแฟกซ์ ในภายหลังหรือการส่งแฟกซ์จากคอมพิวเตอร์ โปรดดูคู่มือผู้ใช้หรือไปที่ [www.hp.com/support/colorlim479mfp](http://www.hp.com/support/colorlim479mfp)

## 8. ใช้คุณสมบัติการสแกน

### Windows

ใช้ทางลัดของแอปพลิเคชัน HP Scan บนเดสก์ท็อป หรือเปิด HP Printer Assistant แล้วเลือก **สแกน** แล้วเลือก **สแกนเอกสารหรือรูปถ่าย**

### macOS

ไปที่โฟลเดอร์ **แอปพลิเคชัน** และเปิด **HP Easy Scan**

## การแก้ไขปัญหา

### คู่มือผู้ใช้

คู่มือผู้ใช้จะมีข้อมูลการใช้เครื่องพิมพ์ และการแก้ไขปัญหาเบื้องต้น ซึ่งทำได้จากในเว็บต่อไปนี้

- ไปที่ [www.hp.com/support/colorlim479mfp](http://www.hp.com/support/colorlim479mfp)
- เลือกเครื่องพิมพ์หากมีการพร้อมท์ ให้เลือก จากนั้นคลิก **User Guides** (คู่มือผู้ใช้)

### การตรวจสอบอัปเดตเฟิร์มแวร์

- ไปที่ [www.hp.com/support/colorlim479mfp](http://www.hp.com/support/colorlim479mfp)
- เลือกเครื่องพิมพ์หากมีการพร้อมท์ ให้เลือก จากนั้นคลิก **Software and Drivers** (ซอฟต์แวร์และไดรเวอร์)
- เลือกระบบปฏิบัติการ และคลิกปุ่ม **Next** (ถัดไป)
- เลือก **Firmware** (เฟิร์มแวร์) และคลิกปุ่ม **Download** (ดาวน์โหลด)

### วิธีใช้บนแผงควบคุม

เมื่อต้องการเข้าสู่หัวข้อวิธีใช้ ให้แตะปุ่ม **Help** (วิธีใช้) ? บนแผงควบคุมของเครื่องพิมพ์



### ทรัพยากรการสนับสนุนเพิ่มเติม

หากต้องการข้อมูลวิธีใช้เครื่องพิมพ์ HP แบบครบถ้วนในทีเดียว ให้ไปที่ [www.hp.com/support/colorlim479mfp](http://www.hp.com/support/colorlim479mfp)

- การแก้ไขปัญหา
- ค้นหาคำแนะนำด้านการกำหนดค่าขั้นสูง
- ดาวน์โหลดอัปเดตซอฟต์แวร์
- เข้าร่วมฟอรัมการสนับสนุน
- ค้นหาข้อมูลการรับประกันและข้อบังคับ
- เข้าถึงทรัพยากรการพิมพ์ผ่านอุปกรณ์เคลื่อนที่

เมื่อต้องการเรียนรู้เพิ่มเติมเกี่ยวกับเครื่องพิมพ์

ให้ไปที่: [www.hp.com/support/colorlim479MFPFAQ](http://www.hp.com/support/colorlim479MFPFAQ) หรือสแกน QR ได้



English.....1  
 简体中文.....4  
 Bahasa Indonesia.....7  
 한국어.....10  
 ไทย.....13  
**繁體中文.....16**  
 Tiếng Việt.....19



# Color LaserJet Pro MFP M479 入門指南



[www.hp.com/support/colorljm479mfp](http://www.hp.com/support/colorljm479mfp)



[www.register.hp.com](http://www.register.hp.com)

附註：設定印表機和下載軟體驅動程式時，必須具備網際網路連線。

## 常見問題集

如需參閱常見問題集，請前往 [www.hp.com/support/colorljm479MFPFAQ](http://www.hp.com/support/colorljm479MFPFAQ) 或掃描 QR 碼。



## 重要事項：

依照印表機硬體設定海報的**步驟 1-3**進行後，再繼續執行**步驟 4**。



## 4. 設定控制面板

開啟印表機電源後，等待印表機初始化。若要瀏覽觸控螢幕控制面板，請使用點選、撥動和捲動手勢。請依照控制面板上的提示，依序設定 **Language** (語言)、**Country/Region** (國家/地區)、**Date/Time** (日期/時間)，以及 **Self-managed** (自我管理) 或 **IT-managed** (IT 管理)。

- 自我管理：適合大部分使用者的最佳化預設值，包括引導式設定和組態步驟以及自動更新。
- IT 管理：適合機群管理功能的最佳化預設值。

請依照其他提示，完成控制面板設定。初始設定之後，可完全自訂這些設定。

## 5. 下載與安裝軟體

附註：在提示您連接 USB 連接線之前，請勿連接。



### 方法 1：下載 HP Easy Start (Windows 和 macOS)

HP Easy Start 將會偵測印表機、協助選擇印表機連線類型 (USB、有線或無線)，以及安裝軟體。

1. 在電腦上，往 [123.hp.com/laserjet](http://123.hp.com/laserjet)，然後按一下 **Download** (下載)。
2. 執行 HP Easy Start。
3. 出現選擇連線類型的提示時，選擇適合連線類型的選項。

附註：如果 HP Easy Start 未偵測到印表機或軟體未自動安裝，請前往**方法 2：手動從印表機支援網站下載 (Windows)**。



### 方法 2：手動從印表機支援網站下載 (Windows)

1. 在電腦上，前往 [www.hp.com/support/colorljm479mfp](http://www.hp.com/support/colorljm479mfp)。
2. 選擇 **Software and drivers** (軟體與驅動程式)。
3. 下載適用於您印表機型號和作業系統的軟體。
4. 從儲存軟體檔案的資料夾啟動軟體檔案。
5. 請依照螢幕上的指示安裝軟體。
6. 出現選擇連線類型的提示時，選擇適合連線類型的選項。

## 手動設定 IP 位址

如需有關如何手動設定 IP 位址的詳細資訊，請參閱印表機使用指南 [www.hp.com/support/colorljm479mfp](http://www.hp.com/support/colorljm479mfp)。

## 疑難排解秘訣 (🔗) 將印表機連線至無線網路 (僅限無線機型)

在無線設定期間，安裝軟體可能會偵測不到印表機。請依照下列步驟，將印表機連接到電腦所存在的相同無線網路。

1. 在印表機控制面板的主畫面上，將螢幕頂端的標籤向下滑動，開啟「儀表板」，然後點選 **Wireless** (無線) (🔗) 圖示。
2. 點選 **Setup** (設定) (⚙️) 圖示。
3. 點選 **Wireless Settings** (無線設定)。
4. 點選 **Wireless Setup Wizard** (無線設定精靈)。
5. 依照畫面指示，完成整個設定。
6. 使用**方法 1**或上述的**方法 2**，重新安裝軟體。



## 6. 行動列印 (選用)

### 將行動裝置連接至無線網路

從行動裝置列印至連線到無線路由器/網路的印表機。將印表機連接到印表機所存在的相同無線網路。

使用 HP Smart 應用程式進行設定、列印和其他。

1. 請前往 [123.hp.com](http://123.hp.com) 或掃描 QR 碼。
2. 安裝 HP Smart 應用程式。
3. 執行 HP Smart 應用程式，然後依照畫面上的指示進行連線、設定、列印和其他。

**附註：**並非所有的行動作業系統都能使用 HP Smart 應用程式。

### HP Roam

如需使用 HP Roam 行動列印應用程式的詳細資訊，請從該行動裝置前往 [hp.com/go/roam](http://hp.com/go/roam)。

### 使用 Wi-Fi Direct 來連接行動裝置

#### (僅限無線印表機機型)

使用 Wi-Fi Direct 且不需要路由器/網路連線的列印工作。

#### 1. 在印表機上啟用 Wi-Fi Direct

1. 在印表機控制面板的主畫面上，將螢幕頂端的標籤向下滑動，開啟「儀表板」，然後點選 Wi-Fi Direct 圖示。
2. 在 **Wi-Fi Direct Details** (Wi-Fi Direct 詳細資料) 畫面上，開啟 **Wi-Fi Direct Settings** (Wi-Fi Direct 設定) 功能表。點選開關，將 Wi-Fi Direct Status (Wi-Fi Direct 狀態) 轉成 **On** (開)。
3. 記下印表機控制面板上的 Wi-Fi Direct 名稱和 Wi-Fi Direct 密碼。

#### 2. 從您的裝置查找印表機

1. 若使用行動裝置，請前往裝置設定選單，接著搜尋您在印表機控制面板上所找到的 Wi-Fi Direct 名稱。
2. 如有提示，則選擇正確的印表機名稱，然後輸入 Wi-Fi Direct 密碼。

## 進一步了解行動列印

本產品支援 AirPrint 和 Wi-Fi Direct。如需行動列印的詳細資訊，請前往 [www.hp.com/go/LaserJetMobilePrinting](http://www.hp.com/go/LaserJetMobilePrinting) 或掃描 QR 碼。



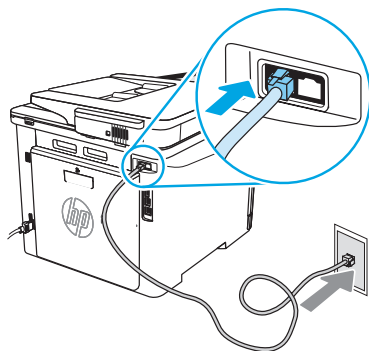
## 7. 設定傳真 (僅限傳真機型 - 選用)

### 7.1 連接印表機

印表機為類比裝置。HP 建議在專用類比電話線路上使用印表機。

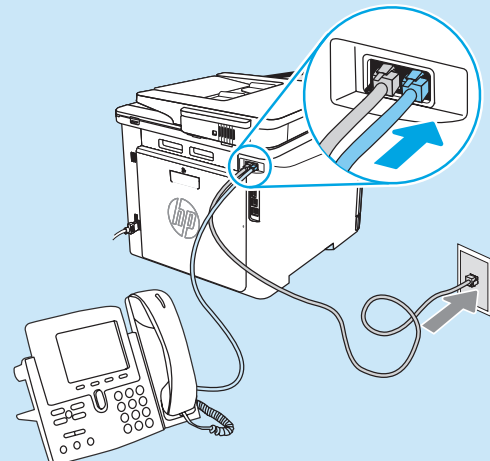
**附註：**有些國家/地區可能需要為印表機隨附的電話線準備轉接器。

將印表機隨附的電話線連接到印表機上的傳真連接埠和牆上的電話插座。



### 如何連接答錄機或電話分機？

1. 將答錄機電話線從電話插座拔除，然後連接到印表機上的電話連接埠。
2. 將印表機隨附的電話線連接到印表機上的傳真連接埠和牆上的電話插座。



## ❶ 如何在數位電話環境中設定 HP 印表機？

HP 印表機是專為搭配傳統類比電話服務而設計。進行印表機的傳真設定時，數位電話環境 (例如 DSL/ADSL、PBX、ISDN 或 FoIP) 可能需要數位轉類比過濾器或轉換器。

**附註：**視電話公司而定，印表機並非與所有的數位服務線路或供應商、所有的數位環境或所有的數位轉類比轉換器都能相容。請聯絡電話公司以判斷哪些設定選項最適合。

**附註：**在內部和外部通話有不同鈴聲模式的 PBX 電話系統中設定鈴聲模式偵測時，請務必使用外線電話號碼撥打印表機傳真號碼，以便錄製鈴聲模式。


## 7.2 設定印表機

若要使用傳真功能，必須設定傳真時間、日期及標題設定。最簡單的方法就是使用產品軟體中的 **Fax Set-Up Wizard** (傳真設定精靈)。或者，使用控制面板，設定下列及其他基本傳真設定。

### 傳真設定精靈 (軟體)

- 開啟 HP Printer Assistant。
  - Windows 10：從開始功能表中，按一下**所有應用程式** (如有存在)，並按一下 **HP**，接著選擇印表機名稱。
  - Windows 8.1：按一下開始畫面左下角的向下箭號，然後選擇印表機名稱。
  - Windows 8：以滑鼠右鍵按一下「開始」畫面的空白區域，在應用程式列上按一下**所有應用程式**，然後選擇印表機名稱。
  - Windows 7：在電腦桌面上按一下**開始**，再選擇**所有程式**、按一下 **HP**、按一下印表機的資料夾，然後選擇印表機名稱。接著開啟 HP Printer Assistant。
- 在 HP Printer Assistant 中選擇**傳真**，然後選擇**傳真設定精靈**。
- 依照畫面上的指示，設定傳真設定值。

### 控制面板

- 在印表機控制面板的主畫面上，將螢幕頂端的標籤向下滑動，開啟「儀表板」，然後點選「傳真設定」圖示。
- 點選 **Setup Wizard** (設定精靈)。
- 輸入您的傳真號碼。傳真號碼的字元數最多為 20 個。
- 輸入傳真機的名稱。傳真機名稱的長度最多為 25 個字元。
- 依照畫面上的指示，設定傳真設定值。

## ❶ 告訴我更多資訊！

如需其他傳真傳送方式 (例如排定在日後傳送傳真或從電腦傳送傳真) 的詳細資訊，請參閱使用指南，或前往 [www.hp.com/support/colorljm479mfp](http://www.hp.com/support/colorljm479mfp)。

## 8. 使用掃描功能

### Windows

使用桌面上的 HP Scan 應用程式捷徑，或是開啟 HP Printer Assistant，接著選擇**掃描**，然後選擇**掃描文件或相片**。

### macOS

移至**應用程式**資料夾並開啟 **HP Easy Scan**。

## 疑難排解

### 使用指南

使用指南包含印表機使用方式及疑難排解資訊。網路上也有提供：

- 前往 [www.hp.com/support/colorljm479mfp](http://www.hp.com/support/colorljm479mfp)。
- 選擇印表機 (如果有出現提示)，然後按一下 **User Guides** (使用指南)。

### 檢查韌體更新

- 前往 [www.hp.com/support/colorljm479mfp](http://www.hp.com/support/colorljm479mfp)。
- 選擇印表機 (如有提示)，然後按一下 **Software and Drivers** (軟體與驅動程式)。
- 選擇作業系統，然後按一下 **Next** (下一步) 按鈕。
- 選擇 **Firmware** (韌體)，然後按一下 **Download** (下載) 按鈕。

### 控制面板說明

若要存取說明主題，請點選印表機控制面板的 **Help (說明)**  按鈕。



### 其他支援資源

如需印表機的 HP 全方位說明，請前往：  
[www.hp.com/support/colorljm479mfp](http://www.hp.com/support/colorljm479mfp)

- 解決問題
- 尋找進階組態設定指示
- 下載軟體更新
- 加入支援論壇
- 尋找保固及法規資訊
- 存取行動列印資源

若要進一步了解這台印表機，請前往：

[www.hp.com/support/colorljm479MFPFAQ](http://www.hp.com/support/colorljm479MFPFAQ) 或掃描 QR 碼。





# Color LaserJet Pro MFP M479

## Hướng dẫn bắt đầu



[www.hp.com/support/colorljm479mfp](http://www.hp.com/support/colorljm479mfp)



[www.register.hp.com](http://www.register.hp.com)

English.....	1
简体中文.....	4
Bahasa Indonesia.....	7
한국어.....	10
ไทย.....	13
繁體中文.....	16
Tiếng Việt.....	19

**LƯU Ý:** Bạn cần phải có kết nối internet để thiết lập máy in và tải xuống trình điều khiển phần mềm.

### ❗ Câu hỏi thường gặp

Để xem các câu hỏi thường gặp, hãy truy cập vào [www.hp.com/support/colorljm479MFPFAQ](http://www.hp.com/support/colorljm479MFPFAQ) hoặc quét mã QR.



### ❗ QUAN TRỌNG:

Hãy thực hiện **Bước 1 - 3** trên áp phích thiết lập phần cứng máy in, rồi tiếp tục với **Bước 4**



## 4. Thiết lập bảng điều khiển

Sau khi bật máy in, hãy đợi để máy in khởi động. Để điều hướng bảng điều khiển cảm ứng màn hình cảm ứng, hãy sử dụng các cử chỉ chạm, vuốt và cuộn. Làm theo lời nhắc trên bảng điều khiển để đặt cấu hình **Ngôn ngữ, Quốc gia/Vùng lãnh thổ, Ngày/Giờ và Tự quản lý** hoặc **Quản lý bảng CNTT**.

- **Tự quản lý:** Cài đặt mặc định được tối ưu hóa cho hầu hết người dùng bao gồm thiết lập có hướng dẫn, các bước đặt cấu hình và các bản cập nhật tự động.
- **Quản lý bảng CNTT:** Cài đặt mặc định được tối ưu hóa để có thể quản lý nhiều máy in.

Làm theo các lời nhắc bổ sung để hoàn tất thiết lập bảng điều khiển.  
Cài đặt có thể tùy chỉnh hoàn toàn sau lần thiết lập đầu tiên.

## 5. Tải xuống và cài đặt phần mềm

**LƯU Ý:** Không cắm cáp USB cho tới khi bạn được nhắc làm điều đó.

### 🖨️ Phương pháp 1: Tải xuống HP Easy Start (Windows và macOS)

HP Easy Start sẽ phát hiện máy in, hỗ trợ việc chọn loại kết nối (USB, Có dây hoặc Không dây) cho máy in và cài đặt phần mềm.

1. Từ máy tính, truy cập [123.hp.com/laserjet](http://123.hp.com/laserjet) rồi nhấp vào **Tải xuống**.
2. Chạy HP Easy Start.
3. Khi được nhắc chọn loại kết nối, hãy chọn tùy chọn thích hợp cho loại kết nối.

**LƯU Ý:** Nếu HP Easy Start không phát hiện được máy in hoặc phần mềm không tự động cài đặt, hãy chuyển sang **Phương pháp 2: Tải xuống thủ công từ trang web hỗ trợ của máy in (Windows)**.

### 🖨️ Phương pháp 2: Tải xuống thủ công từ trang web hỗ trợ của máy in (Windows)

1. Từ máy tính, truy cập vào [www.hp.com/support/colorljm479mfp](http://www.hp.com/support/colorljm479mfp).
2. Chọn **Phần mềm và trình điều khiển**.
3. Tải xuống phần mềm cho kiểu máy in và hệ điều hành của bạn.
4. Khởi chạy tệp phần mềm từ thư mục lưu tệp.
5. Làm theo hướng dẫn trên màn hình để cài đặt phần mềm.
6. Khi được nhắc chọn loại kết nối, hãy chọn tùy chọn thích hợp cho loại kết nối.

### ❗ Định cấu hình địa chỉ IP theo cách thủ công

Hãy xem hướng dẫn sử dụng máy in để biết thông tin về cách định cấu hình địa chỉ IP theo các thủ công tại [www.hp.com/support/colorljm479mfp](http://www.hp.com/support/colorljm479mfp).

## Mẹo khắc phục sự cố (🔧) Kết nối máy in với một mạng không dây (chỉ dành cho các kiểu máy không dây)

Trong quá trình thiết lập không dây, phần mềm cài đặt có thể không phát hiện được máy in. Làm theo các bước dưới đây để kết nối máy in với cùng mạng không dây như máy tính.

1. Từ Màn hình chính trên bảng điều khiển máy in, vuốt tab ở trên cùng của màn hình xuống để mở Bảng điều khiển, rồi chạm vào biểu tượng **Không dây** (🔧).
2. Chạm vào biểu tượng **Thiết lập** (⚙️).
3. Chạm vào **Cài đặt không dây**.
4. Chạm vào **Trình hướng dẫn thiết lập không dây**.
5. Làm theo hướng dẫn trên màn hình để hoàn tất thiết lập.
6. Cài đặt lại phần mềm theo **Phương pháp 1** hoặc **Phương pháp 2** ở trên.

## 6. In từ thiết bị di động (Tùy chọn)

### Kết nối thiết bị di động với một mạng không dây

In từ thiết bị di động tới máy in có kết nối mạng/bộ định tuyến không dây. Kết nối thiết bị di động với cùng mạng không dây như máy in.

Dùng ứng dụng HP Smart để thiết lập, in, v.v.

1. Truy cập vào [123.hp.com](http://123.hp.com) hoặc quét mã QR.
2. Cài đặt ứng dụng HP Smart.
3. Chạy ứng dụng HP Smart và làm theo hướng dẫn trên màn hình để kết nối, thiết lập, in, v.v.



**LƯU Ý:** Không phải hệ điều hành nào cũng hỗ trợ ứng dụng HP Smart.

#### HP Roam

Để biết thông tin về cách dùng ứng dụng in từ thiết bị di động HP Roam, hãy truy cập vào [hp.com/go/roam](http://hp.com/go/roam) trên thiết bị di động.

### Kết nối thiết bị di động bằng Wi-Fi Direct (chỉ có ở kiểu máy in không dây)

In bằng Wi-Fi Direct không cần kết nối mạng/bộ định tuyến.

#### 1. Bật Wi-Fi Direct trên máy in

1. Từ Màn hình chính trên bảng điều khiển máy in, vuốt tab ở trên cùng của màn hình xuống để mở Bảng điều khiển, rồi chạm vào biểu tượng Wi-Fi Direct
2. Trên màn hình **Wi-Fi Direct Details** (Thông tin chi tiết Wi-Fi Direct), hãy mở menu **Wi-Fi Direct Settings** (Cài đặt Wi-Fi Direct). Chạm vào công tắc để chuyển Trạng thái Wi-Fi Direct thành **Bật**.
3. Ghi nhớ tên và mật khẩu Wi-Fi Direct trên bảng điều khiển máy in.

#### 2. Tìm máy in từ thiết bị của bạn

1. Từ thiết bị di động, đi tới menu **Settings** (Cài đặt) của thiết bị rồi tìm kiếm tên Wi-Fi Direct mà bạn nhìn thấy trên bảng điều khiển máy in.
2. Chọn đúng tên máy in rồi nhập mật khẩu Wi-Fi Direct nếu được nhắc.

## 📌 Tìm hiểu thêm về tính năng in từ thiết bị di động

Sản phẩm hỗ trợ AirPrint và Wi-Fi Direct. Để biết thêm thông tin về in từ thiết bị di động, hãy truy cập vào [www.hp.com/go/LaserJetMobilePrinting](http://www.hp.com/go/LaserJetMobilePrinting) hoặc quét mã QR.



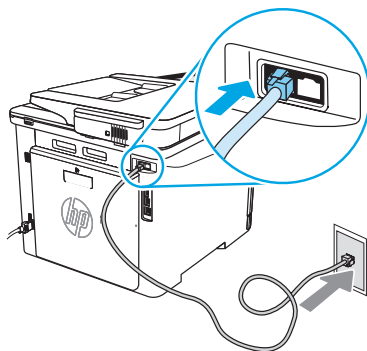
## 7. Thiết lập fax (chỉ dành cho kiểu máy fax - tùy chọn)

### 7.1 Kết nối máy in

Máy in là thiết bị analog. HP khuyến cáo bạn nên sử dụng máy in trên đường dây điện thoại analog chuyên dụng.

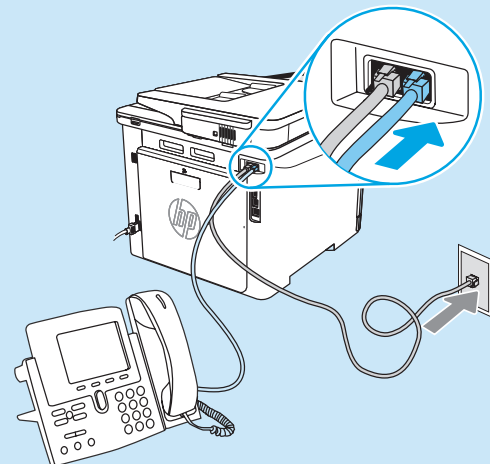
**LƯU Ý:** Bạn có thể phải sử dụng bộ điều hợp cho dây điện thoại đi kèm với sản phẩm tại một số quốc gia/vùng.

Cắm dây điện thoại đi kèm với máy in vào cổng fax trên máy in và vào giắc cắm điện thoại trên tường.



### 📌 Làm thế nào để tôi kết nối máy trả lời tự động hoặc điện thoại nhánh?

1. Tháo dây điện thoại của máy trả lời tự động ra khỏi giắc điện thoại rồi cắm dây đó vào cổng điện thoại trên máy in.
2. Cắm dây điện thoại đi kèm với máy in vào cổng fax trên máy in và vào giắc cắm điện thoại trên tường.



## ❗ Làm thế nào để tôi cài đặt máy in HP trong môi trường điện thoại kỹ thuật số?

Các máy in HP được thiết kế riêng cho mục đích sử dụng với các dịch vụ điện thoại analog truyền thống. Đối với môi trường điện thoại kỹ thuật số (như: DSL/ADSL, PBX, ISDN hay FoIP), bạn có thể cần dùng đến bộ lọc hoặc bộ chuyển đổi tín hiệu kỹ thuật số thành analog khi cài đặt máy in cho chức năng fax.

**LƯU Ý:** Tùy theo công ty điện thoại, máy in có thể không tương thích với tất cả các đường dây hoặc nhà cung cấp dịch vụ kỹ thuật số, trong tất cả các môi trường kỹ thuật số hoặc với tất cả các bộ chuyển đổi tín hiệu kỹ thuật số thành analog. Hãy liên lạc với công ty điện thoại để xác định xem tùy chọn cài đặt nào là phù hợp nhất.

**LƯU Ý:** Khi cài đặt chức năng dò tìm mẫu đồ chuông trong hệ thống điện thoại PBX được thiết lập các mẫu đồ chuông khác nhau cho cuộc gọi nội bộ và từ bên ngoài, hãy bảo đảm rằng bạn quay số fax của máy in bằng số bên ngoài để ghi lại mẫu đồ chuông.

## 7.2 Định cấu hình máy in

Bạn phải định cấu hình các cài đặt ngày, giờ và tiêu đề fax để sử dụng tính năng fax. Phương pháp đơn giản nhất là sử dụng **Fax Set-Up Wizard** trong phần mềm sản phẩm. Hoặc, bạn có thể đặt cấu hình các cài đặt này cũng như các cài đặt cơ bản khác bằng cách dùng bảng điều khiển.

### Fax Set-Up Wizard (phần mềm)

- Mở HP Printer Assistant.
  - Windows 10: Từ menu **Bắt đầu**, nhấp vào **Tất cả ứng dụng** (nếu có), nhấp vào **HP** rồi chọn tên máy in.
  - Windows 8.1: Nhấp vào mũi tên xuống ở góc dưới bên trái màn hình **Bắt đầu** và chọn tên máy in.
  - Windows 8: Nhấp chuột phải vào khu vực trống trên màn hình **Bắt đầu**, nhấp **Tất cả ứng dụng** trên thanh ứng dụng rồi chọn tên máy in.
  - Windows 7: Từ máy tính để bàn, nhấp vào **Bắt đầu**, chọn **Tất cả chương trình**, nhấp **HP**, nhấp vào thư mục dành cho máy in, chọn biểu tượng có chứa tên máy in rồi mở HP Printer Assistant.
- Trong HP Printer Assistant, chọn **Fax** rồi chọn **Fax Setup Wizard**.
- Thực hiện theo hướng dẫn trên màn hình để đặt cấu hình các cài đặt fax.

### Bảng điều khiển

- Từ Màn hình chính trên bảng điều khiển máy in, vuốt tab ở phía trên cùng của màn hình xuống để mở Bảng điều khiển, sau đó chạm vào biểu tượng **Cài đặt fax**.
- Chạm vào **Trình hướng dẫn thiết lập**.
- Nhập số fax. Số ký tự tối đa cho số fax là 20.
- Nhập tên cho máy fax. Số ký tự tối đa cho tên máy fax là 25.
- Làm theo các hướng dẫn còn lại trên màn hình để đặt cấu hình cài đặt fax.

## ❗ Hãy tìm hiểu thêm!

Để biết thêm thông tin về các cách khác để gửi fax, chẳng hạn như đặt lịch để gửi fax sau hay gửi fax từ máy tính, hãy xem hướng dẫn sử dụng hoặc truy cập vào [www.hp.com/support/colorijm479mfp](http://www.hp.com/support/colorijm479mfp)

## 8. Sử dụng tính năng quét

### Windows

Sử dụng phím tắt ứng dụng HP Scan trên máy tính, hoặc mở HP Printer Assistant, chọn **Scan**, rồi chọn **Quét tài liệu hoặc ảnh**.

### macOS

Chuyển tới thư mục **Ứng dụng** và mở **HP Easy Scan**.

## Xử lý sự cố

### Hướng dẫn sử dụng

Hướng dẫn Sử dụng chứa thông tin về cách sử dụng và khắc phục sự cố với máy in. Bạn có thể xem hướng dẫn trên trang web:

- Truy cập vào [www.hp.com/support/colorijm479mfp](http://www.hp.com/support/colorijm479mfp).
- Chọn máy in nếu được nhắc rồi nhấp vào **Hướng dẫn sử dụng**.

### Kiểm tra các bản cập nhật của chương trình cơ sở

- Truy cập vào [www.hp.com/support/colorijm479mfp](http://www.hp.com/support/colorijm479mfp).
- Chọn máy in nếu được nhắc rồi nhấp vào **Phần mềm và trình điều khiển**.
- Chọn hệ điều hành và nhấp vào nút **Next** (Tiếp theo).
- Chọn **Chương trình cơ sở** và nhấp vào nút **Tải xuống**.

### Trợ giúp trên bảng điều khiển

Để truy cập vào các chủ đề trợ giúp, hãy chạm vào nút **Trợ giúp ?** trên bảng điều khiển máy in.



### Tài nguyên hỗ trợ bổ sung

Để xem phần trợ giúp toàn diện của HP dành cho máy in, hãy truy cập: [www.hp.com/support/colorijm479mfp](http://www.hp.com/support/colorijm479mfp)

- Giải quyết sự cố
- Tìm hướng dẫn cấu hình nâng cao
- Tải xuống các bản cập nhật phần mềm
- Tham gia các diễn đàn hỗ trợ
- Tìm thông tin về quy định và bảo hành
- Truy cập vào tài nguyên in dành cho thiết bị di động

Để biết thêm thông tin về máy in, hãy truy cập vào: [www.hp.com/support/colorijm479MFPEAQ](http://www.hp.com/support/colorijm479MFPEAQ) hoặc quét mã QR.







© Copyright 2021 HP Development Company, L.P.

Reproduction, adaptation or translation without prior written permission is prohibited, except as allowed under the copyright laws.

The information contained herein is subject to change without notice.

The only warranties for HP products and services are set forth in the express warranty statements accompanying such products and services. Nothing herein should be construed as constituting an additional warranty. HP shall not be liable for technical or editorial errors or omissions contained herein.

### Trademark Credits

Windows® is a U.S. registered trademark of Microsoft Corporation.

Apple and the Apple logo are trademarks of Apple Inc., registered in the U.S. and other countries.

macOS is a trademark of Apple Inc., registered in the U.S. and other countries.

AirPrint is a trademark of Apple Inc., registered in the U.S. and other countries.



### Informasi Importir

PT. Hewlett Packard Indonesia Gedung Perkantoran Prudential Center Kota Kasablanka Lantai 9, Jl. Casablanca Kav.88 Kel. Menteng Dalam, Kec. Tebet, Kota Administrasi Jakarta Selatan 12870

### Petunjuk Pemeliharaan

Petunjuk Pemeliharaan Lakukan prosedur pencegahan dasar setiap kali hendak menggunakan printer ini untuk mengurangi resiko cedera karena terbakar atau sengatan listrik:

1. Bacalah dan pahami seluruh petunjuk dalam dokumentasi yang menyertai printer.
2. Perhatikan semua tanda peringatan dan petunjuk yang tertera pada printer.
3. Cabut kabel printer dari stopkontak sebelum membersihkan.
4. Jangan memasang atau menggunakan printer ini dekat air atau saat Anda basah.
5. Letakkan printer dengan benar pada permukaan yang stabil.
6. Letakkan printer di lokasi yang aman dimana tak seorangpun dapat menginjak atau tersangkut kabel daya, dan agar kabel daya tidak rusak.
7. Jika printer tak beroperasi dengan normal, lihat berkas bantuan (tersedia di komputer begitu perangkat lunak telah diinstallkan).
8. Tidak ada komponen bagian dalam yang dapat diperbaiki pengguna. Serahkan perbaikan kepada petugas servis resmi.
9. Gunakan hanya dengan kabel daya dan adaptor daya yang disediakan HP.

© Copyright 2021 HP Development Company, L.P.

未经事先书面许可，严禁进行任何形式的复制、改编或翻译，除非版权法另有规定。

此处包含的信息如有更改，恕不另行通知。

此类产品和服务附带的保修声明中明确规定了 HP 产品和服务的所有保修事项。不得将本文的任何内容视为构成附加保修。HP 不对本文档中的技术错误、编辑错误或遗漏承担责任。

### 商标说明

Windows®是 Microsoft Corporation 在美国的注册商标。

Apple 和 Apple 徽标是 Apple Inc. 在美国和其它国家/地区的注册商标

Mac OS 是 Apple Inc. 在美国和其他国家/地区的注册商标。

AirPrint 是 Apple Inc. 在美国和其他国家/地区的注册商标。



W1A77-90928

