



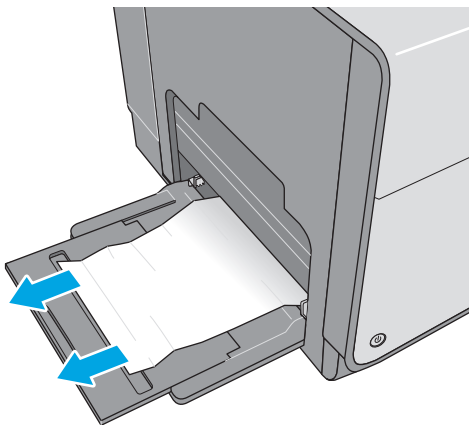
Clear Paper Jams

Clear paper jams in the printer



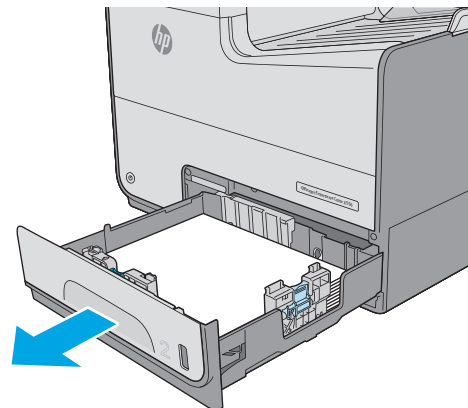
www.youtube.com/watch?v=tl4pXGn07kc

1



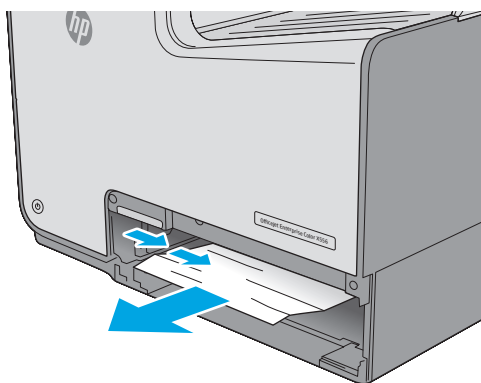
Remove any jammed paper from Tray 1.

2



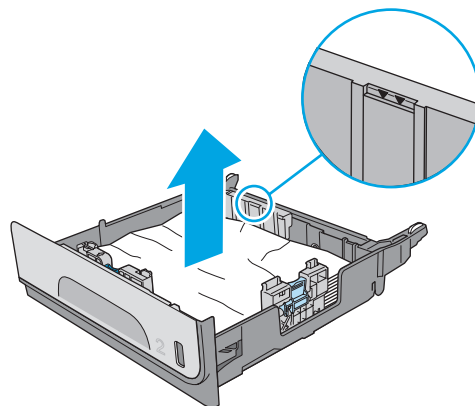
Pull Tray 2 completely out of the printer by pulling and lifting up slightly.

3



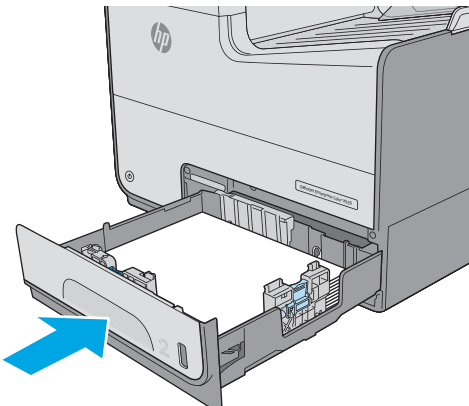
Remove any jammed paper from the feed rollers inside the printer. First pull the paper to the right, and then pull it forward to remove it.

4



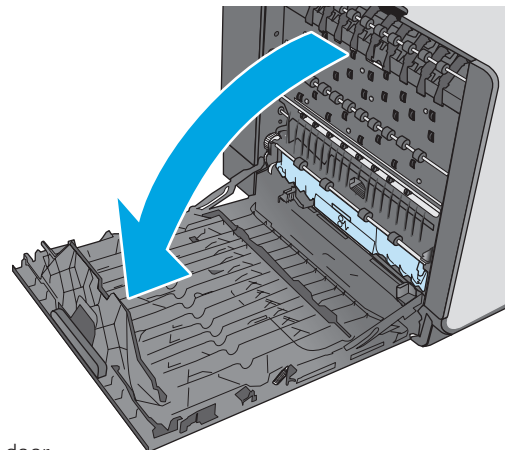
Remove any jammed or damaged sheets of paper. Verify that the tray is not overfilled and that the paper guides are adjusted correctly.

5



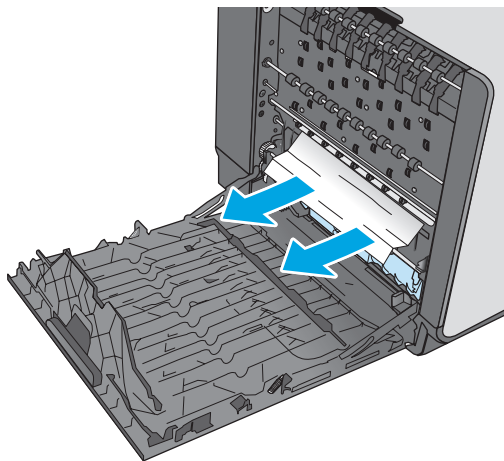
Install Tray 2 and close it.

6



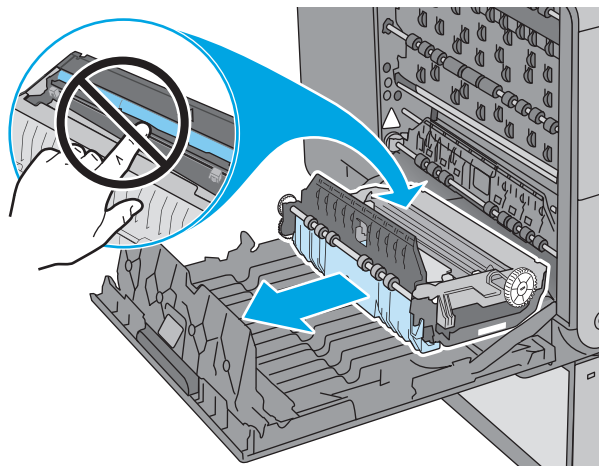
Open the left door.

7



Gently pull out any jammed paper from the rollers and delivery area. If the paper tears, make sure to remove all remnants.

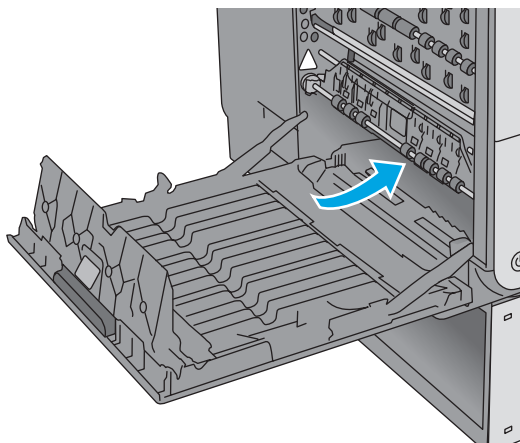
8



Remove the ink-collection unit by pulling it out with both hands. Set the unit aside, upright, on a piece of paper to prevent spills.

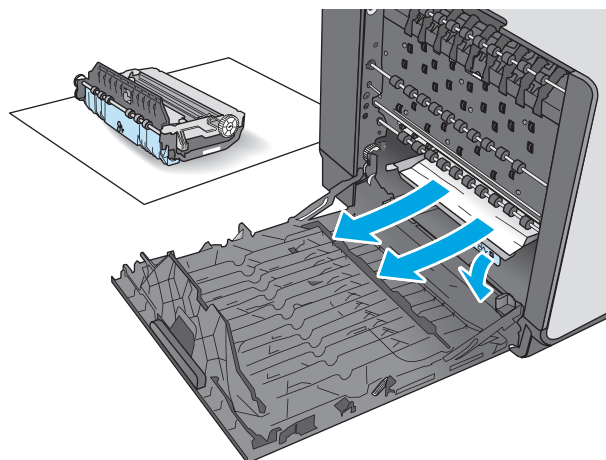
CAUTION: When removing the ink-collection unit, avoid making direct contact with the black cylinder to prevent pigment smear on skin or clothes.

9



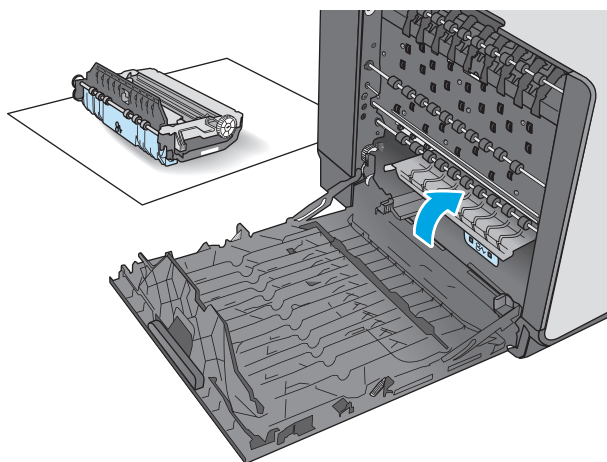
After removing the ink-collection unit, look deep inside the area where it was located and remove any paper or debris found.

10



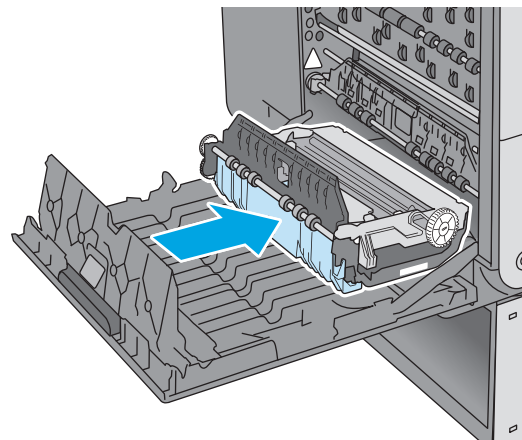
Lower the platen by pressing down on the green tab. This will cause the printer to try to feed the sheet through the print zone. You might need to gently pull on the sheet if it does not feed. Remove the sheet.

11



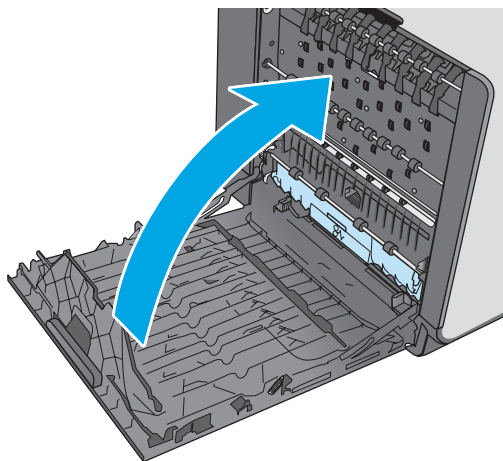
Lift the green tab to return the platen to the operating position.

12



Install the ink-collection unit.

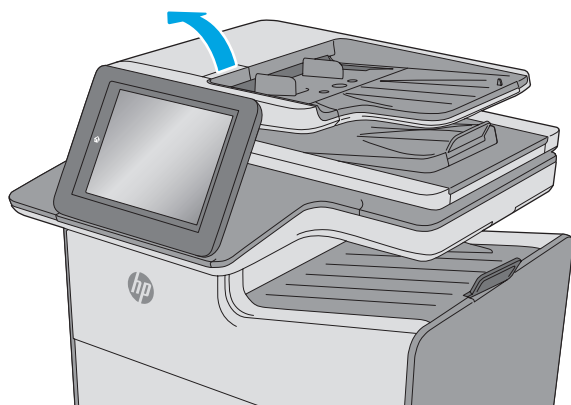
13



Close the left door.

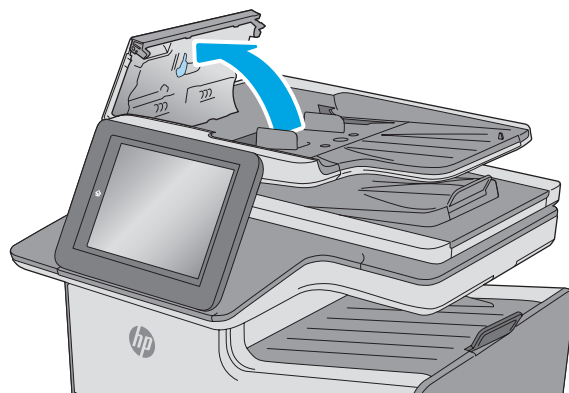
Clear paper jams in the document feeder

1



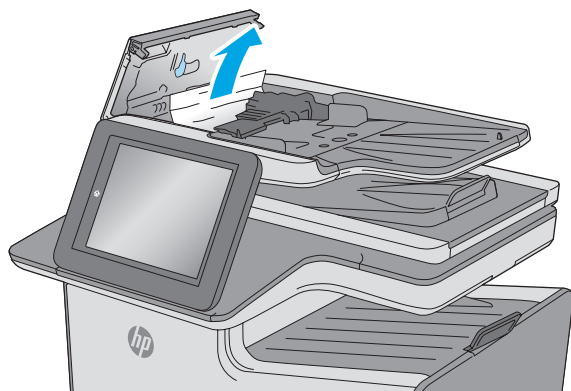
Lift the latch to release the document-feeder cover.

2



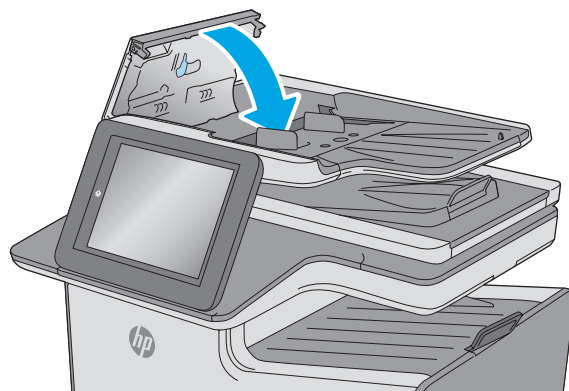
Open the document-feeder cover.

3



Remove any jammed paper.

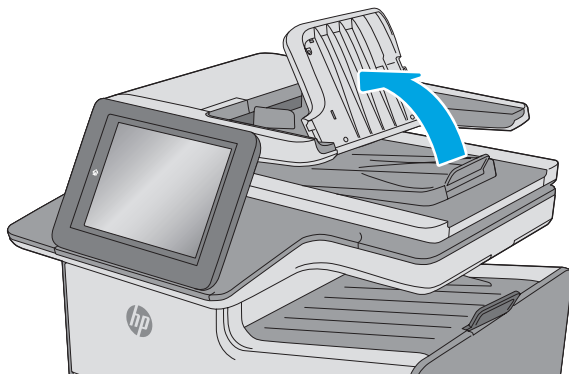
4



Close the document-feeder cover.

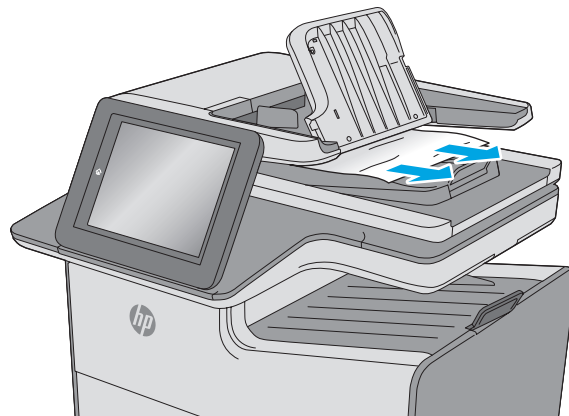
NOTE: Verify that the latch on the top of the document feeder cover is completely closed.

5



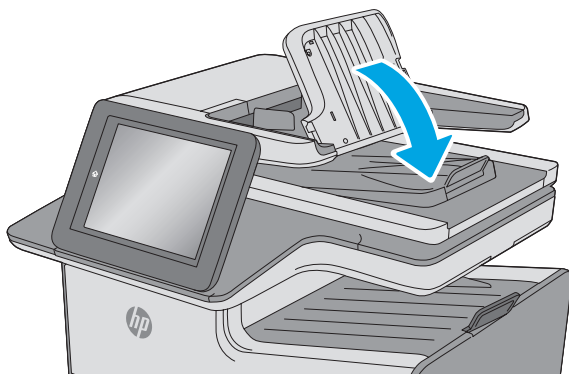
Lift the document feeder input tray.

6



Remove any jammed paper.

7



Lower the document-feeder input tray.