

1

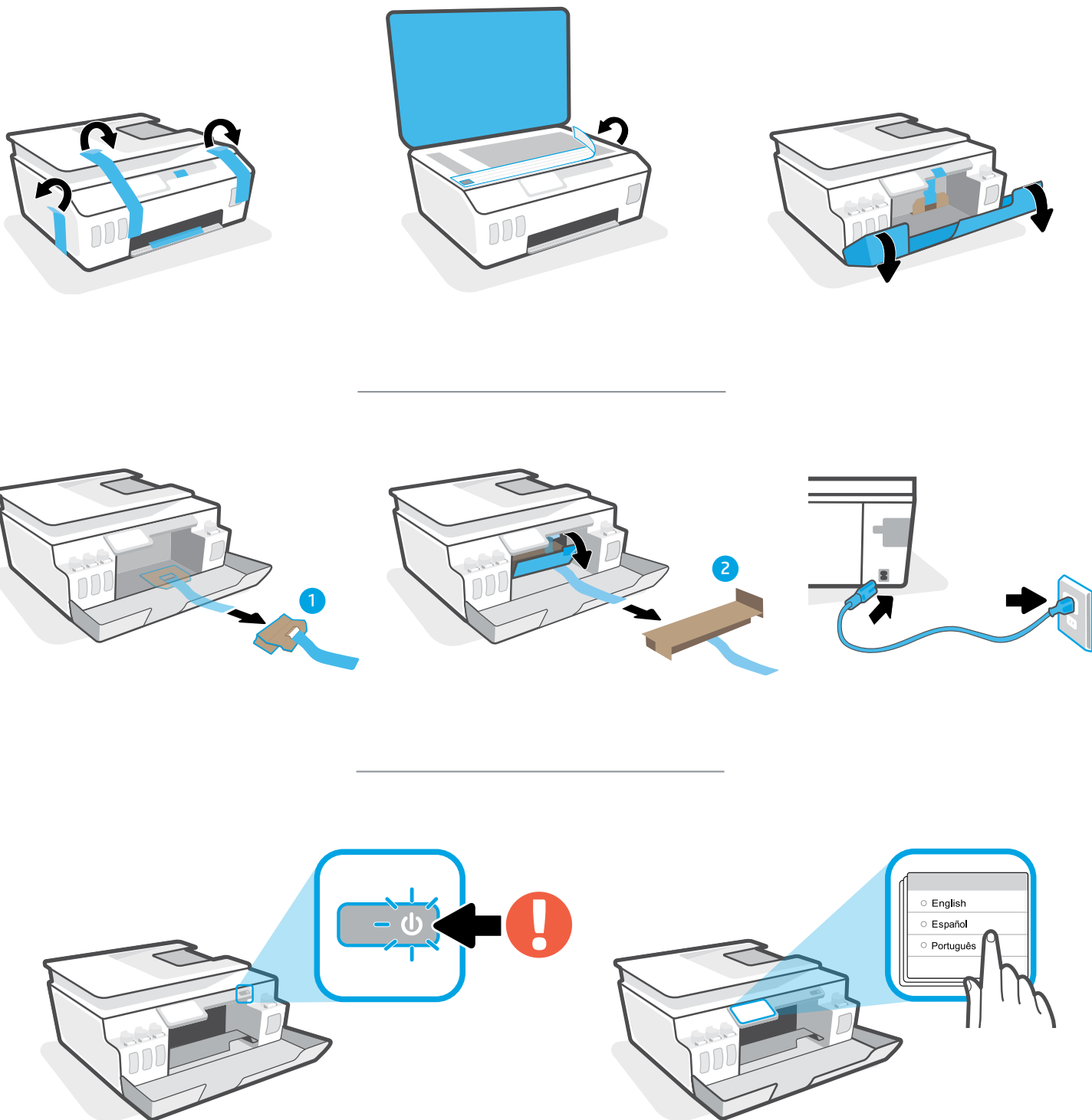


从这里开始

www.hp.com/support/smarttanksetup

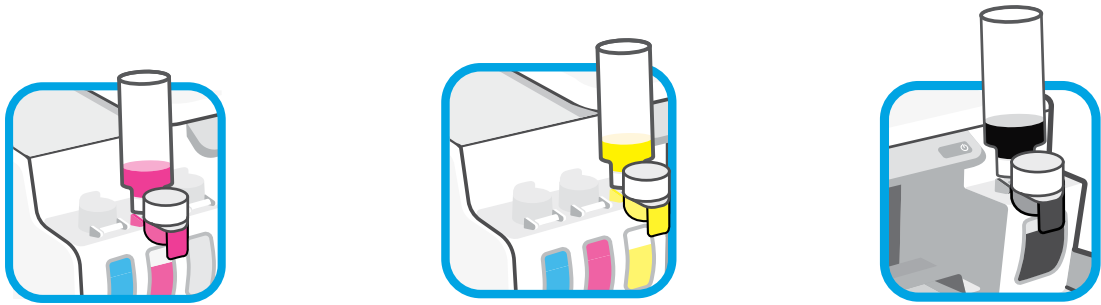
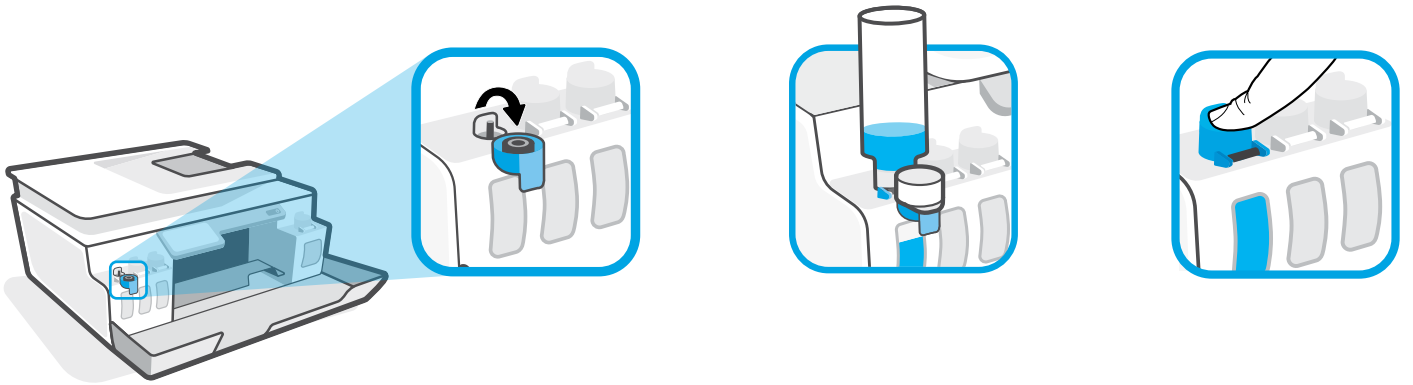
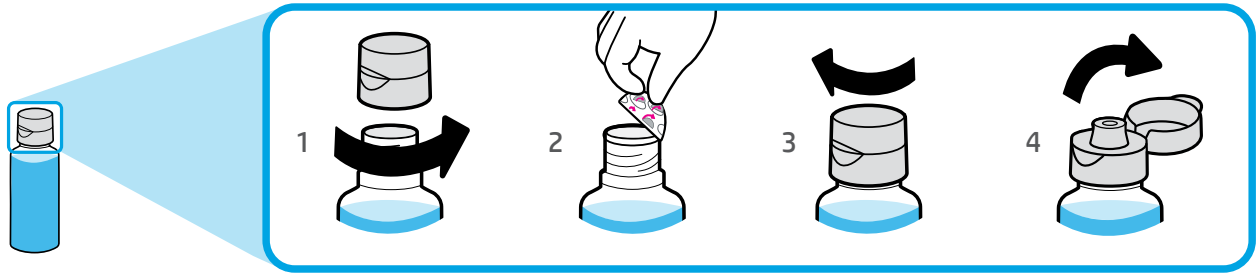


1

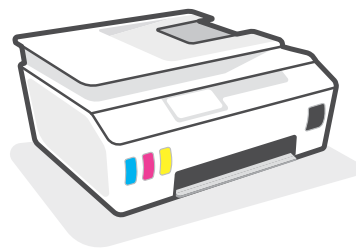
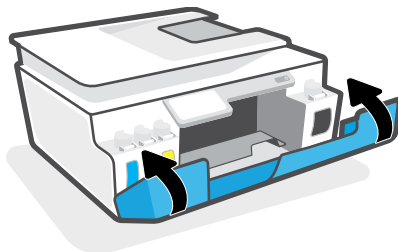


按照打印机提示操作。

2

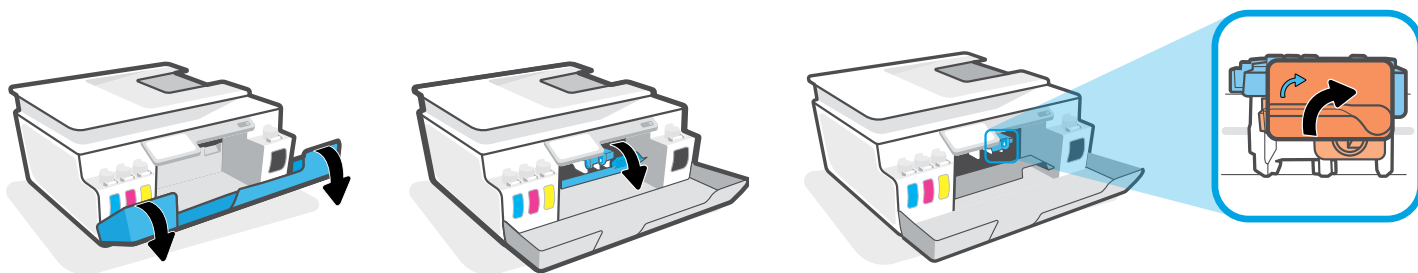
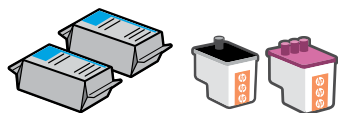


灌注墨槽。

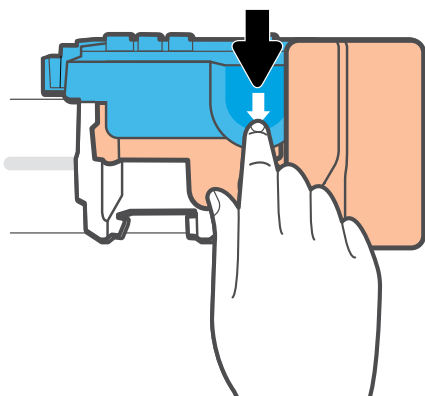


关闭墨槽门。

3a



打开墨槽门。待托架移动到中心位置后停止。转动橙色手柄。

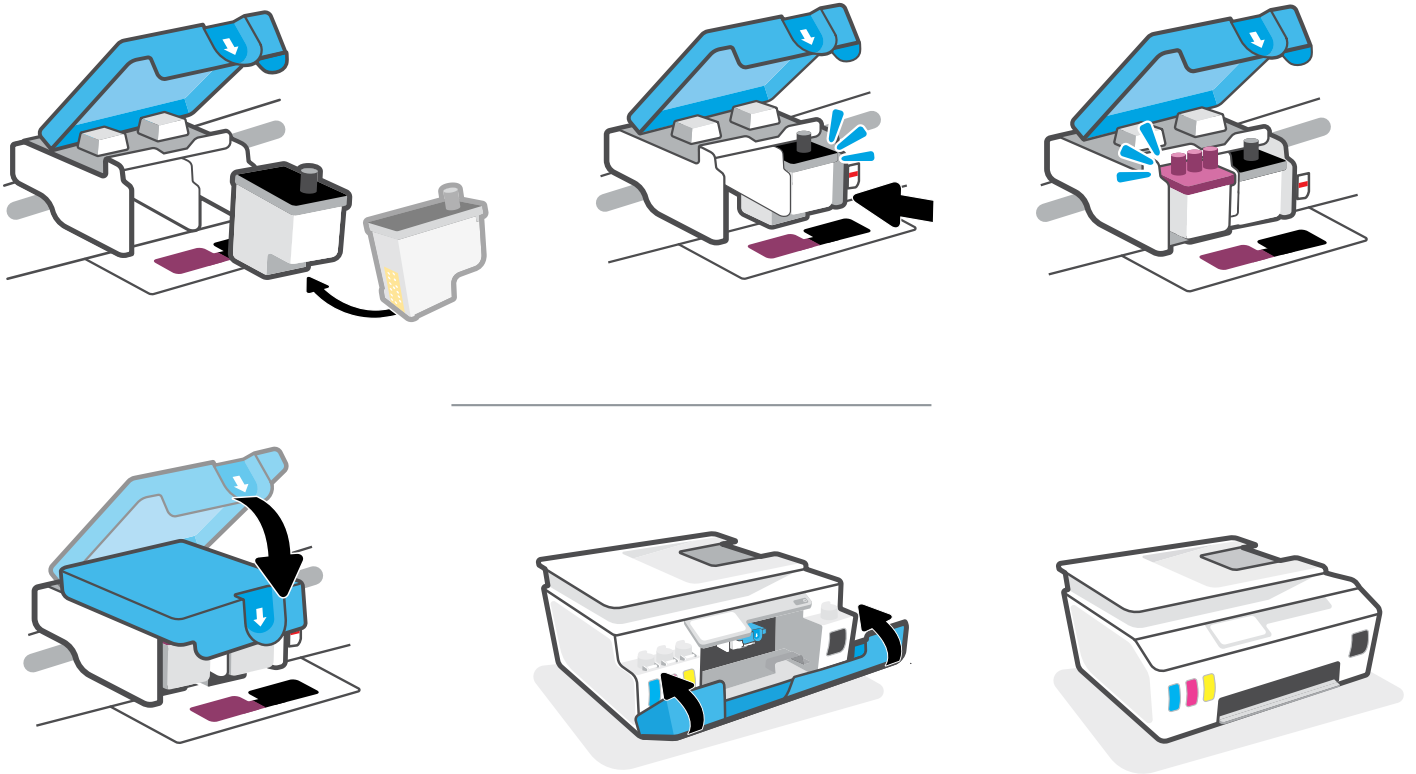
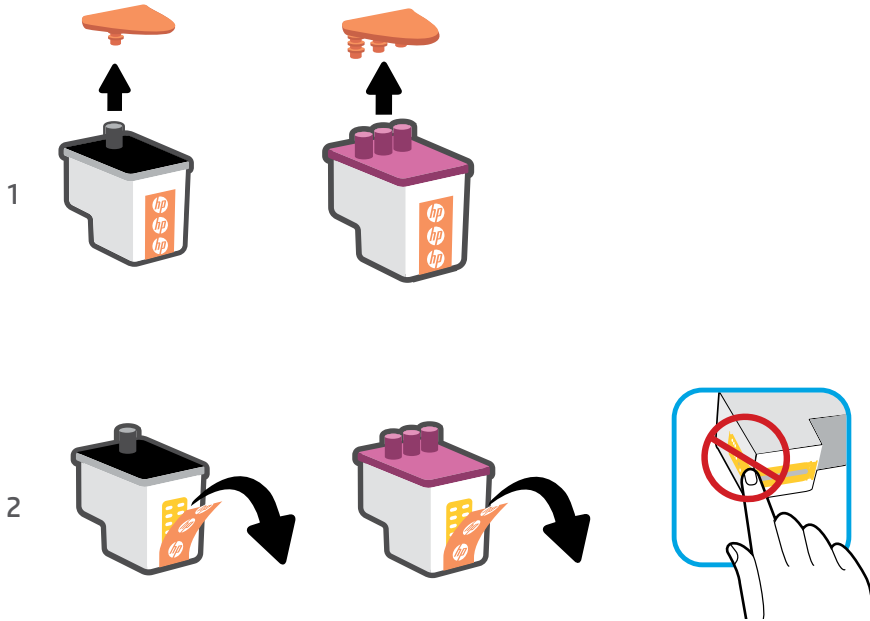


向下按打开蓝色卡销。



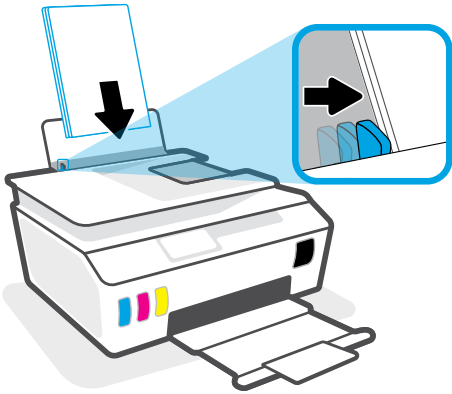
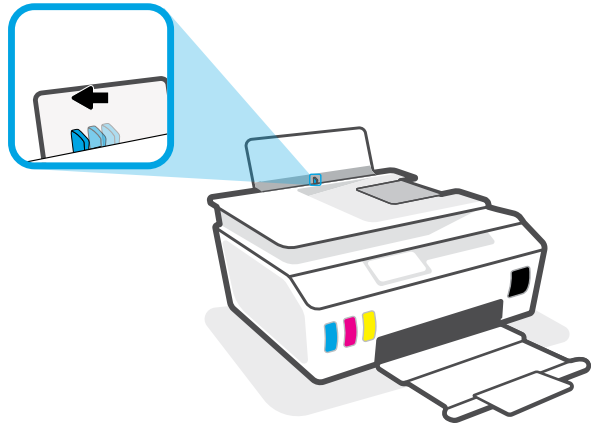
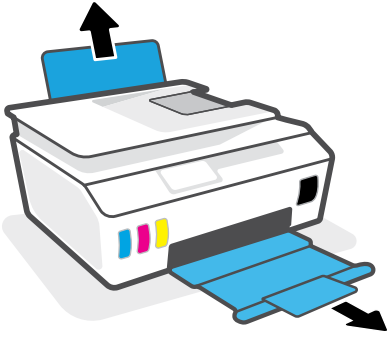
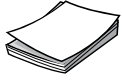
取出橙色塑料后将其丢弃。请小心操作，以防沾上墨渍。

3b



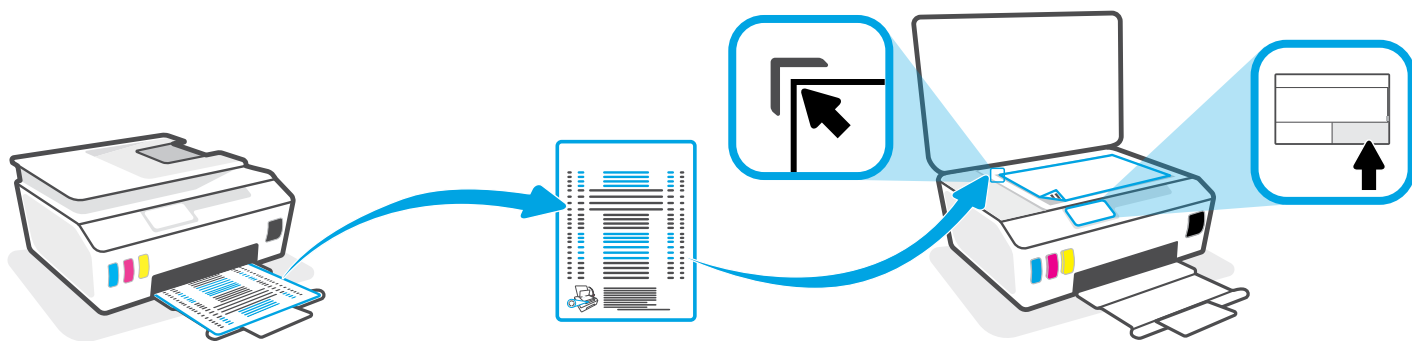
安装打印头。关闭蓝色卡销和墨槽门。

4



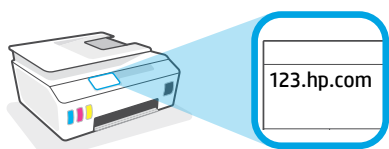
放入纸张。

5



按照屏幕上的说明操作，扫描已打印的校准页。

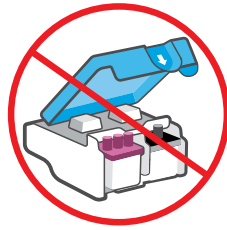
6



123.hp.com



要完成设置，请访问 123.hp.com 获取 HP 软件。



完成设置后，请勿打开蓝色卡销，必要情况除外。



如果要把墨槽中装有墨水的打印机搬到家外或办公室外，请参阅“移动打印机？”指南，以防漏墨或打印机受损。

注意：首次把打印机从包装中取出后，请妥善保管包装材料，以供重新包装之用。

www.hp.com/support/smarttankmoving



ZHCN

The Apple logo is a trademark of Apple Inc., registered in the U.S. and other countries. App Store is a service mark of Apple Inc.

Android, Google Play, and the Google Play logo are trademarks of Google Inc.

Printed in China | 中国印刷

© Copyright 2019 HP Development Company, L.P.



Y0F71-90041