



Color LaserJet Pro MFP M282-M285



www.hp.com/support/ljM282MFP



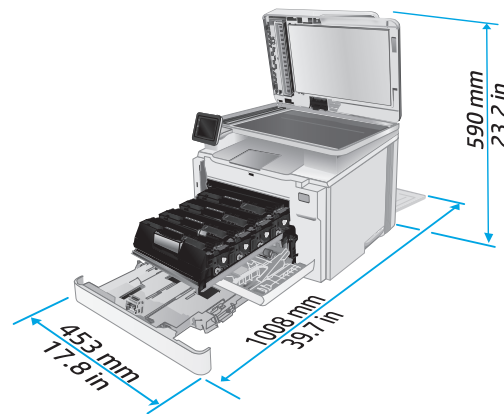
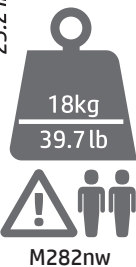
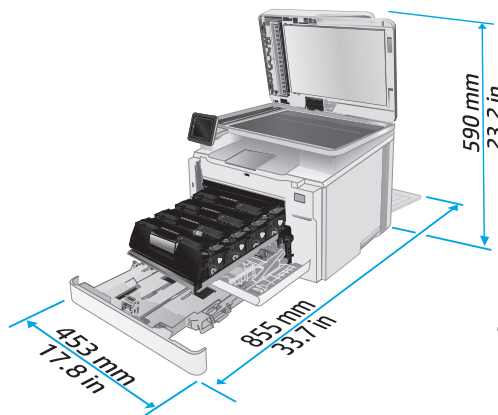
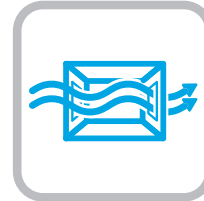
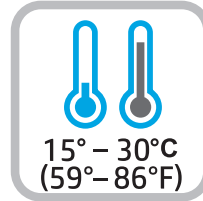
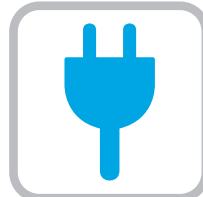
www.register.hp.com



7KW72-90918

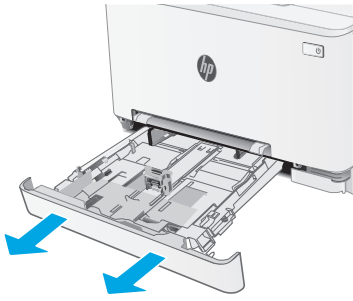
© Copyright 2019 HP Development Company, L.P.

www.hp.com

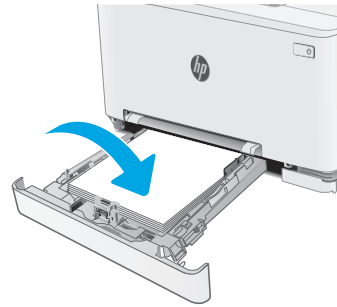


1

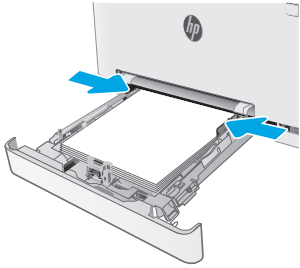
1.1



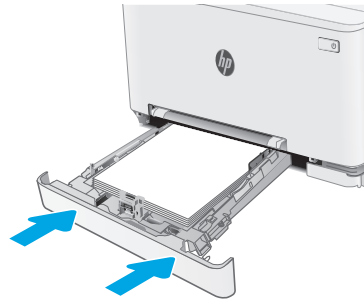
1.2



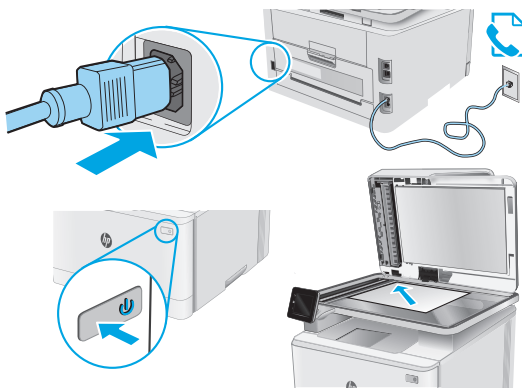
1.3



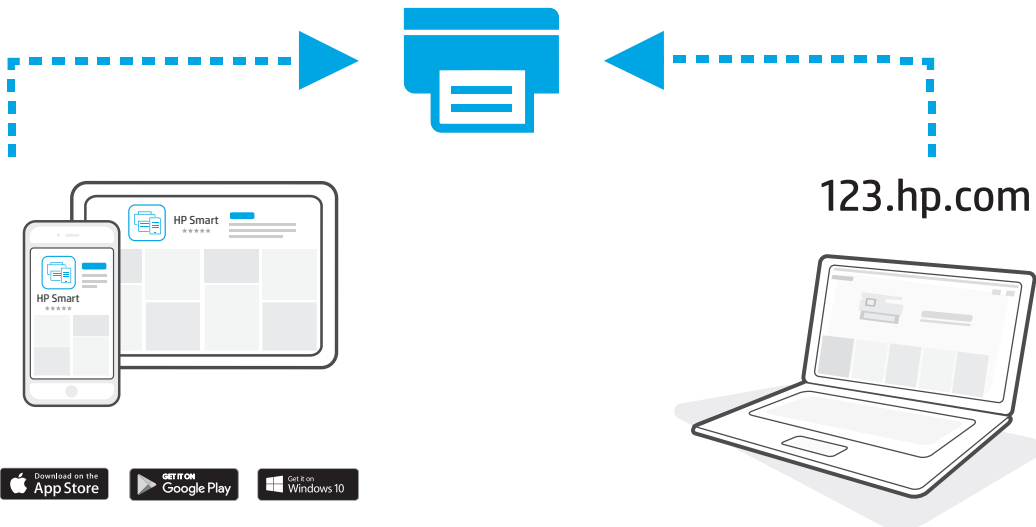
1.4



2



3





Color LaserJet Pro MFP M282-M285 Reference Guide

English.....3

Bahasa Indonesia.....6

한국어9

ไทย 12

繁體中文..... 15

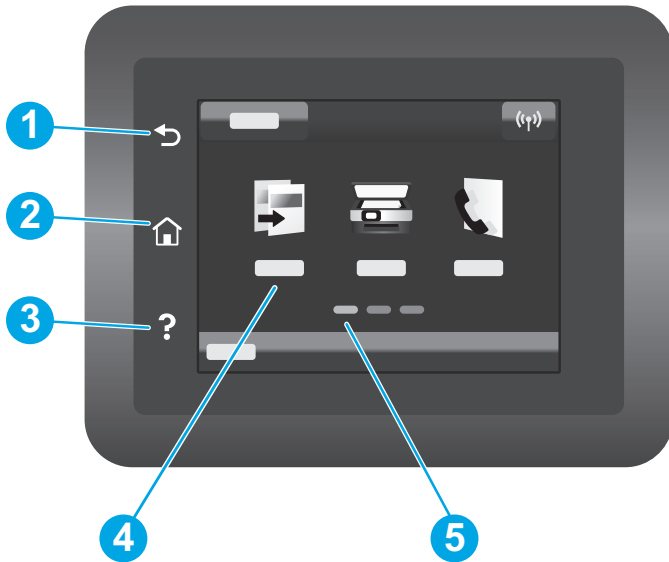
Tiếng Việt 18

Need Help? - FAQ

For frequently asked questions, go to www.hp.com/support/ljM282MFPFAQ or scan the QR code.



Touchscreen control panel view



- 1 Back button
- 2 Home button
- 3 Help button
- 4 Color touchscreen
- 5 Home page screen indicator

Wireless network connection (wireless models only)

Use touchscreen control panel to set up your wireless connection:

Note: Before setting up your wireless connection, disconnect any USB or network cables from your printer.

1. Touch the **Wireless** icon, touch **Network Wi-Fi off**, and then touch **Setting**.
2. Touch **Wireless Setup Wizard**, and then select your network name from the list of available wireless networks.

Download and install the software

NOTE: Do not connect the USB cable until you are prompted to do so.

Method 1: Download from 123.hp.com/laserjet

1. Go to 123.hp.com/laserjet (Windows) or 123.hp.com (OS X), and click **Download**.
2. Follow the onscreen instructions and then prompts to save the file to the computer.
3. Launch the software file from the folder where the file was saved.
4. Follow the onscreen instructions to install the software.
5. When prompted to select a connection type, select the appropriate option for the type of connection.

Method 2: Download from printer support website (Windows)

1. Go to www.hp.com/support/ijM282MFP.
2. Select **Software and Drivers**.
3. Download the software for your printer model and operating system.
4. Launch the software file from the folder where the file was saved.
5. Follow the onscreen instructions to install the software.
6. When prompted to select a connection type, select the appropriate option for the type of connection.

Mobile printing

Method 1: HP Smart

Use the HP Smart app to set up, print, and more.

1. Scan the QR code or go to 123.hp.com.
2. Install the HP Smart app.
3. Run the HP Smart app and follow the onscreen instructions to connect, set up, print, and more.




Method 2: Wi-Fi Direct (wireless models only)

Wi-Fi Direct allows Wi-Fi capable devices, such as smart phones, tablets, or computers, to make a wireless network connection directly to the printer without using a wireless router or access point. Connect to the printer's Wi-Fi Direct signal the same way Wi-Fi capable devices are connected to a new wireless network or hotspot.

Enable Wi-Fi Direct

To set up Wi-Fi Direct from the control panel, complete the following steps:

1. From the Home screen on the printer control panel, touch the Connection Information  button, and open the following menus:
 - **Wi-Fi Direct**
 - **Settings**
 - **On/Off**
2. Touch the **On** menu item. The printer saves the setting and then returns the control panel to the **Wi-Fi Direct Settings** menu.

Discover the printer

1. From the mobile device, turn on the Wi-Fi, and search for wireless networks.
2. Select the printer as shown on the printer control panel.
Example printer name: Direct-bb-HP M282 Laserjet

Learn more about mobile printing

For further information about these and other operating systems (Chrome/Google Cloud Print), go to www.hp.com/go/LaserJetMobilePrinting or scan the QR code.



Use the scan feature

Use the HP Scan software on your computer to start a scan job at the printer.

Windows

Click **Start**, select **Programs** or **All Programs**, select **HP**, and then select **HP Scan**.

OS X

Go to the **Applications** folder and open **HP Smart**.

Troubleshooting

📶 Wireless connection troubleshooting

Verify that the printer is within the range of the wireless network. For most networks, the printer must be within 30 m (100 ft) of the wireless access point (wireless router). A USB cable might be required for temporary connection between the printer and the computer. To ensure that the wireless setup information synchronizes correctly, do not connect the USB cable until prompted to do so.

Follow these steps to restore the network settings:

1. Remove the USB cable from the printer.
2. Go to the **Setup** menu on your printer, select **Network Setup**, and then select **Restore Defaults/Restore Network Settings**. The printer will restore network default automatically and restart.
3. Continue to install the software.

User guide and additional support resources

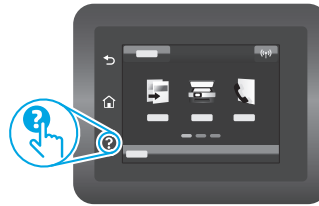
The user guide includes printer usage and troubleshooting information. It is available on the web: Go to www.hp.com/support/ijM282MFP.

Check for firmware updates

1. Go to www.hp.com/support/ijM282MFP.
2. Select a printer or category from the list, and then click **Drivers**.
3. Select the operating system, and click the **Next** button.
4. Select **Firmware**, and click the **Download** button.

Control panel help

Touch the Help ? button on the printer control panel to access help topics.



📶 Wireless printing

For more information about wireless printing and wireless setup, go to www.hp.com/go/wirelessprinting.





Color LaserJet Pro MFP M282-M285

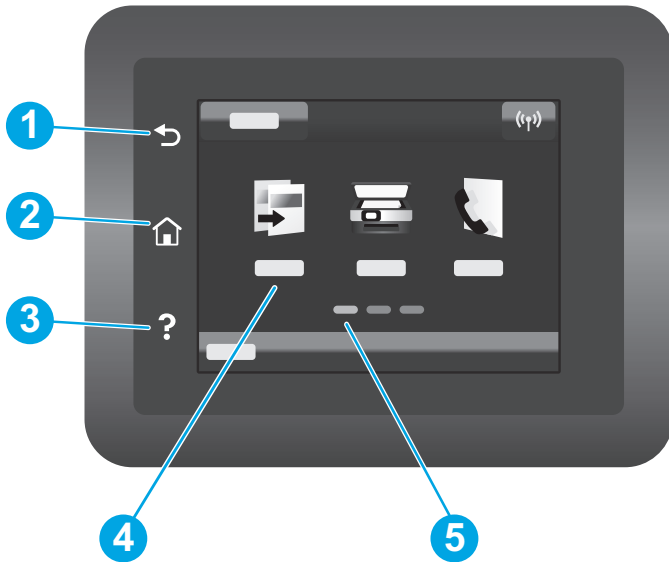
Panduan Referensi

Butuh Bantuan? - FAQ

Untuk pertanyaan umum, kunjungi www.hp.com/support/ljM282MFPFAQ atau pindai kode QR.



Tampilan panel kontrol layar sentuh



- | | |
|---|------------------------------|
| 1 | Tombol Back (Kembali) |
| 2 | Tombol Home (Awal) |
| 3 | Tombol Help (Bantuan) |
| 4 | Layar sentuh warna |
| 5 | Indikator layar halaman awal |

Sambungan jaringan nirkabel (hanya model nirkabel)

Gunakan panel kontrol layar sentuh untuk menyiapkan koneksi nirkabel:

Catatan: Sebelum menyiapkan koneksi nirkabel, putuskan setiap kabel jaringan atau USB dari printer.

1. Sentuh ikon **Nirkabel**, nonaktifkan **Jaringan Wi-Fi**, lalu sentuh **Setting** (Pengaturan).
2. Sentuh **Wireless Setup Wizard** (Wizard Penyiapan Nirkabel), lalu pilih nama jaringan dari daftar jaringan nirkabel yang tersedia.

Mendownload dan menginstal perangkat lunak

CATATAN: Jangan sambungkan kabel USB hingga diminta untuk melakukannya.

Metode 1: Download dari 123.hp.com/laserjet

1. Kunjungi 123.hp.com/laserjet (Windows) atau 123.hp.com (OS X), dan klik **Download**.
2. Ikuti petunjuk di layar dan perintah untuk menyimpan file di komputer.
3. Jalankan file perangkat lunak dari folder tempat menyimpan file.
4. Ikuti petunjuk di layar untuk menginstal perangkat lunak.
5. Bila diminta untuk memilih jenis sambungan, gunakan pilihan yang tepat untuk jenis sambungan.

Metode 2: Download dari situs web dukungan printer (Windows)

1. Kunjungi www.hp.com/support/ljM282MFP.
2. Pilih **Software and Drivers** (Perangkat lunak dan Driver).
3. Download perangkat lunak untuk model printer dan sistem operasi Anda.
4. Jalankan file perangkat lunak dari folder tempat menyimpan file.
5. Ikuti petunjuk di layar untuk menginstal perangkat lunak.
6. Bila diminta untuk memilih jenis sambungan, gunakan pilihan yang tepat untuk jenis sambungan.

Pencetakan mobile

Metode 1: HP Smart

Gunakan aplikasi HP Smart untuk mengonfigurasi, mencetak, dan lainnya.

1. Pindai kode QR atau kunjungi 123.hp.com.
2. Instal aplikasi HP Smart.
3. Jalankan aplikasi HP Smart dan ikuti petunjuk di layar untuk menyambungkan, mengonfigurasi, mencetak, dan lainnya.




Metode 2: Wi-Fi Direct (hanya model nirkabel)

Wi-Fi Direct memungkinkan perangkat yang mendukung Wi-Fi, misalnya smartphone, tablet, atau komputer, membuat sambungan jaringan nirkabel langsung ke printer tanpa menggunakan router atau jalur akses nirkabel. Sambungkan ke sinyal Wi-Fi Direct printer menggunakan cara yang sama seperti menyambungkan perangkat yang mendukung Wi-Fi ke jaringan nirkabel atau hotspot baru.

Mengaktifkan Wi-Fi Direct

Untuk mengkonfigurasi Wi-Fi Direct dari panel kontrol, lakukan langkah berikut:

1. Dari layar Home (Awal) di panel kontrol printer, sentuh tombol Connection Information (Informasi Sambungan) , dan buka menu berikut:
 - **Wi-Fi Direct**
 - **Settings** (Pengaturan)
 - **On/Off** (Aktif/Tidak Aktif)
2. Sentuh item menu **On** (Aktif). Printer menyimpan pengaturan, lalu panel kontrol kembali ke menu **Wi-Fi Direct Settings** (Pengaturan Wi-Fi Direct).

Menemukan printer

1. Dari perangkat seluler, aktifkan Wi-Fi, lalu cari jaringan nirkabel.
2. Pilih printer yang ditunjukkan pada panel kontrol printer.

Contoh nama printer: Direct-bb-HP M282 Laserjet

Selengkapnya tentang pencetakan mobile

Untuk informasi lebih lanjut tentang hal ini dan sistem operasi lainnya (Chrome/Google Cloud Print), kunjungi www.hp.com/go/LaserJetMobilePrinting atau pindai kode QR.



Menggunakan fitur pindai

Gunakan perangkat lunak HP Scan di komputer untuk memulai tugas pindai pada printer.

Windows

Klik **Start** (Mulai), pilih **Programs** (Program) atau **All Programs** (Semua Program), pilih **HP**, lalu pilih **HP Scan**.

OS X

Buka folder **Applications** (Aplikasi) dan buka **HP Smart**.

Mengatasi masalah

🔧 Pemecahan masalah koneksi nirkabel

Pastikan printer telah berada dalam jangkauan jaringan nirkabel. Untuk sebagian besar jaringan, printer harus berada dalam jarak 30 m (100 kaki) dari jalur akses nirkabel (router nirkabel). Kabel USB mungkin diperlukan untuk membuat sambungan sementara antara printer dan komputer. Untuk memastikan bahwa informasi konfigurasi nirkabel telah disinkronisasi dengan benar, jangan sambungkan kabel USB hingga Anda diminta untuk melakukannya.

Ikuti langkah-langkah ini untuk memulihkan pengaturan jaringan:

1. Lepaskan kabel USB dari printer.
2. Buka menu **Setup** (Konfigurasi) di printer, pilih **Network Setup** (Konfigurasi Jaringan), lalu pilih **Restore Defaults/Restore Network Settings** (Pulihkan Default/Pulihkan Pengaturan Jaringan). Printer akan memulihkan jaringan standar secara otomatis dan melakukan start ulang.
3. Lanjutkan dengan menginstal perangkat lunak.

Panduan pengguna dan informasi berguna untuk dukungan tambahan

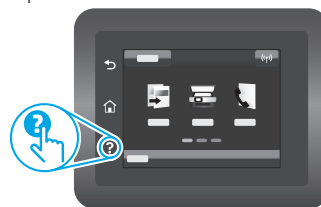
Panduan pengguna mencakup informasi tentang penggunaan dan cara mengatasi masalah printer. Informasi ini tersedia di web: Kunjungi www.hp.com/support/ljM282MFP.

Memeriksa pembaruan firmware

1. Kunjungi www.hp.com/support/ljM282MFP.
2. Pilih printer atau kategori dari daftar, lalu klik **Drivers** (Driver).
3. Pilih sistem operasi, lalu klik tombol **Next** (Berikutnya).
4. Pilih **Firmware**, lalu klik tombol **Download**.

Bantuan panel kontrol

Sentuh tombol Help (Bantuan) ? pada panel kontrol printer untuk mengakses topik bantuan.



📄 Pencetakan nirkabel

Untuk informasi lebih lanjut tentang pencetakan dan konfigurasi nirkabel, kunjungi www.hp.com/go/wirelessprinting.





Color LaserJet Pro MFP M282-M285 설명서

English.....3

Bahasa Indonesia.....6

한국어.....9

ไทย 12

繁體中文..... 15

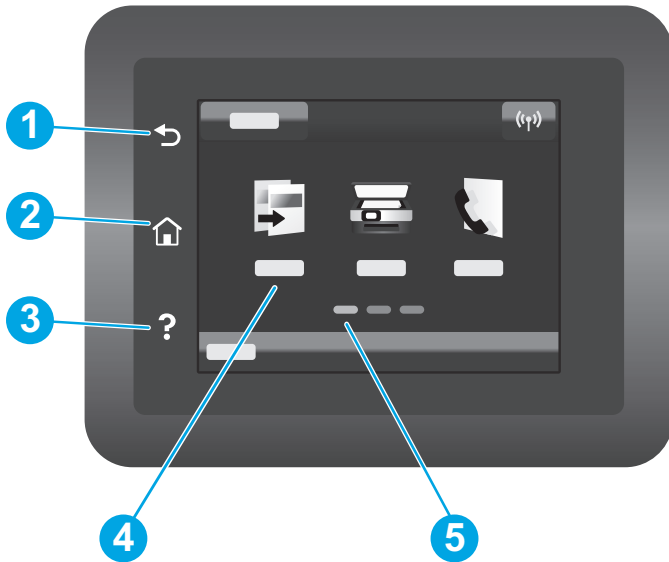
Tiếng Việt..... 18

도움말 정보? - FAQ

자주 묻는 질문은
www.hp.com/support/ljm282MFPFAQ
에서 확인하거나 QR 코드를 스캔합니다.



터치스크린 제어판에만 해당



- | | |
|---|-------------|
| 1 | 뒤로 가기 버튼 |
| 2 | 홈 버튼 |
| 3 | 도움말 버튼 |
| 4 | 컬러 터치스크린 |
| 5 | 홈페이지 화면 표시기 |

무선 네트워크 연결(무선 모델만 해당)

터치스크린 패널을 사용하여 무선 연결을 설정합니다.

참고: 무선 연결을 설정하기 전에, USB 또는 네트워크 케이블을 프린터에서 분리합니다.

1. 무선 아이콘, 네트워크 Wi-Fi 끄기 및 설정을 차례로 누릅니다.
2. 무선 설치 마법사를 누른 다음, 사용 가능한 무선 네트워크 목록에서 네트워크 이름을 선택합니다.

소프트웨어 다운로드 및 설치

참고: 알림이 표시되기 전까지는 USB 케이블을 연결하지 마십시오.

방법 1: 123.hp.com/laserjet에서 다운로드

1. 123.hp.com/laserjet (Windows) 또는 123.hp.com (OS X)로 이동하여 다운로드를 클릭합니다.
2. 화면의 안내와 알림에 따라, 컴퓨터에 파일을 저장합니다.
3. 파일이 저장된 폴더에서 소프트웨어 파일을 실행합니다.
4. 화면의 지시에 따라, 소프트웨어를 설치합니다.
5. 연결 유형 선택 알림이 표시되면, 연결 유형에 적합한 옵션을 선택합니다.

방법 2: 제품 지원 웹 사이트에서 다운로드(Windows)

1. www.hp.com/support/ijM282MFP에서 확인합니다.
2. 소프트웨어 및 드라이버를 선택합니다.
3. 해당 프린터 모델 및 운영 체제용 소프트웨어를 다운로드합니다.
4. 파일이 저장된 폴더에서 소프트웨어 파일을 실행합니다.
5. 화면의 지시에 따라, 소프트웨어를 설치합니다.
6. 연결 유형 선택 알림이 표시되면, 연결 유형에 적합한 옵션을 선택합니다.

모바일 인쇄

방법 1: HP Smart

HP 스마트 앱을 사용하여 연결, 설정 및 인쇄 등을 실시합니다.

1. QR 코드를 스캔하거나 123.hp.com에서 확인합니다.
2. HP 스마트 앱을 설치합니다.
3. HP 스마트 앱을 실행하여 화면에 표시되는 안내에 따라 연결, 설정 및 인쇄 등을 실시합니다.



방법 2: Wi-Fi Direct(무선 모델만 해당)

Wi-Fi Direct를 사용하면, 스마트폰, 태블릿, 컴퓨터와 같은 Wi-Fi 케이블 장치를 무선 라우터나 액세스 지점을 사용하지 않고 무선 네트워크로 직접 프린터에 연결할 수 있습니다. Wi-Fi를 사용할 수 있는 장치를 새 무선 네트워크 또는 핫스팟에 연결하는 경우와 동일한 방법으로 프린터의 Wi-Fi Direct 신호에 연결합니다.

Wi-Fi Direct 활성화

제어판에서 Wi-Fi Direct를 설정하려면, 다음 단계를 수행합니다.

1. 프린터 제어판의 홈 화면에서 연결 정보 / 버튼을 누르고, 다음 메뉴를 엽니다.
 - Wi-Fi Direct
 - 설정
 - 켜기/끄기
2. 켜기 메뉴 항목을 터치합니다. 프린터가 설정을 저장하고 나면 제어판의 Wi-Fi Direct 설정 메뉴로 돌아옵니다.

프린터 찾기

1. 모바일 장치에서 Wi-Fi를 켜고 무선 네트워크를 검색합니다.
2. 프린터 제어판에 표시되는 프린터를 선택합니다.
프린터 이름 예: Direct-bb-HP M282 Laserjet

모바일 인쇄에 대해 자세히 알아보기

이들 운영 체제 및 기타 운영 체제(Chrome/Google Cloud Print)에 대한 자세한 내용은 www.hp.com/go/LaserJetMobilePrinting에서 확인하거나 QR 코드를 스캔합니다.



스캔 기능 사용

프린터에서 스캔 작업을 시작하려면, 컴퓨터의 HP Scan 소프트웨어를 사용합니다.

Windows

시작을 클릭한 다음, 프로그램 또는 모든 프로그램, HP, HP Scan을 차례로 선택합니다.

OS X

응용 프로그램 폴더로 이동한 다음, HP Smart를 엽니다.

문제 해결

📶 무선 연결 문제해결

프린터가 무선 네트워크 범위 내에 있는지 확인합니다. 대부분의 네트워크에서는 프린터가 무선 액세스 지점(무선 라우터)의 30m(100ft) 이내에 있어야 합니다. USB 케이블을 사용하여 임시로 프린터와 컴퓨터를 연결해야 할 수도 있습니다. 무선 설정 정보가 제대로 동기화되도록 알람이 표시되기 전에는 USB 케이블을 연결하지 마십시오.

네트워크 설정을 복원하려면, 다음 단계를 수행합니다.

1. USB 케이블을 프린터에서 분리합니다.
2. 프린터의 **설치** 메뉴로 이동한 다음 **네트워크 설치 및 기본값 복구/네트워크 설정 복구**를 차례로 선택합니다. 프린터가 자동으로 네트워크 기본값을 복구하여 다시 시작합니다.
3. 소프트웨어 설치를 진행합니다.

사용 설명서 및 추가 지원 리소스

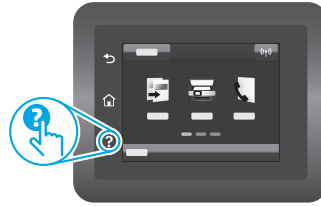
사용 설명서에 프린터 사용법 및 문제 해결 정보가 포함되어 있습니다. 웹에서 사용할 수 있습니다:
www.hp.com/support/ijM282MFP에서 확인합니다.

펌웨어 업데이트 확인

1. www.hp.com/support/ijM282MFP에서 확인합니다.
2. 목록에서 프린터 또는 카테고리를 선택한 다음, **드라이버**를 클릭합니다.
3. 운영 체제를 선택하고 **다음** 버튼을 클릭합니다.
4. **펌웨어**를 선택하고 **다운로드** 버튼을 클릭합니다.

제어판 도움말

도움말을 보려면, 프론트 제어판의 도움말 **?** 버튼을 누르십시오.



📶 무선 인쇄

무선 인쇄 및 무선 설정에 대한 자세한 내용은 www.hp.com/go/wirelessprinting에서 확인합니다.



English.....3
 Bahasa Indonesia.....6
 한국어9
 ไทย12
 繁體中文.....15
 Tiếng Việt18



Color LaserJet Pro MFP M282-M285

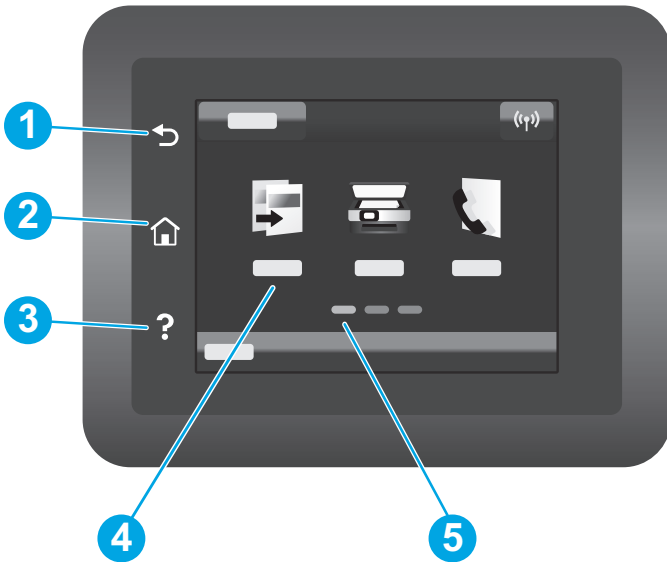
คู่มืออ้างอิง

ต้องการความช่วยเหลือหรือไม่ - ❗ คำถามที่พบบ่อย

หากต้องการดูคำถามที่พบบ่อย ให้ไปที่ www.hp.com/support/ljM282MFPFAQ หรือสแกนรหัส QR นี้



จอแสดงผลแผงควบคุมหน้าจอสัมผัส



- | | |
|---|---------------------|
| 1 | ปุ่มย้อนกลับ |
| 2 | ปุ่มหน้าหลัก |
| 3 | ปุ่มวิธีใช้ |
| 4 | หน้าจอสัมผัสแบบสี |
| 5 | ตัวแสดงหน้าจอสัมผัส |

การเชื่อมต่อเครือข่ายไร้สาย (รุ่นไร้สายเท่านั้น)

โปรดใช้แผงควบคุมหน้าจอรระบบสัมผัสเพื่อตั้งค่าการเชื่อมต่อไร้สายของคุณ:

หมายเหตุ: โปรดตัดการเชื่อมต่อ USB และสายเครือข่ายใดๆ ออกจากเครื่องพิมพ์ก่อนทำการตั้งค่าการเชื่อมต่อแบบไร้สาย

1. แตะที่สัญลักษณ์ **Wireless** (ไร้สาย) แตะที่ **Network Wi-Fi** (Wi-Fi เครือข่าย) ปิด จากนั้นแตะที่ **Setting** (การตั้งค่า)
2. แตะที่ **Wireless Setup Wizard** จากนั้นเลือกชื่อเครือข่ายของคุณจากรายการเครือข่ายไร้สายที่ใช้ได้

ดาวน์โหลดและติดตั้งซอฟต์แวร์

หมายเหตุ: อย่าเพิ่งต่อสาย USB จนกว่าโปรแกรมการติดตั้งจะพร้อมตัวให้ต่อ

วิธีที่ 1: ดาวน์โหลดจาก 123.hp.com/laserjet

1. ไปยัง 123.hp.com/laserjet (Windows) หรือ 123.hp.com (OS X) และคลิก **Download** (ดาวน์โหลด)
2. ทำตามคำแนะนำบนหน้าจอและพร้อมตัว เพื่อบันทึกไฟล์ในคอมพิวเตอร์
3. เปิดไฟล์ซอฟต์แวร์จากโฟลเดอร์ที่บันทึกไฟล์ไว้
4. ทำตามคำแนะนำบนหน้าจอเพื่อติดตั้งซอฟต์แวร์
5. เมื่อพร้อมตัวให้เลือกประเภทของการเชื่อมต่อ โปรดเลือกตัวเลือกที่เหมาะสมสำหรับประเภทของการเชื่อมต่อ

วิธีที่ 2: ดาวน์โหลดจากเว็บไซต์การสนับสนุนเครื่องพิมพ์ (Windows)

1. ไปที่ www.hp.com/support/ljM282MEP
2. เลือก **Software and Drivers** (ซอฟต์แวร์และไดรเวอร์)
3. ดาวน์โหลดซอฟต์แวร์สำหรับรุ่นเครื่องพิมพ์และระบบปฏิบัติการของคุณ
4. เปิดไฟล์ซอฟต์แวร์จากโฟลเดอร์ที่บันทึกไฟล์ไว้
5. ทำตามคำแนะนำบนหน้าจอเพื่อติดตั้งซอฟต์แวร์
6. เมื่อพร้อมตัวให้เลือกประเภทของการเชื่อมต่อ โปรดเลือกตัวเลือกที่เหมาะสมสำหรับประเภทของการเชื่อมต่อ

การพิมพ์มือถือ

วิธีที่ 1: HP Smart

ใช้แอป HP Smart เพื่อตั้งค่า พิมพ์ และอื่นๆ

1. สแกนรหัส QR นี้หรือไปที่ 123.hp.com
2. ติดตั้งแอป HP Smart
3. เรียกใช้แอป HP Smart และทำตามคำแนะนำบนหน้าจอ เพื่อเชื่อมต่อ ตั้งค่า พิมพ์ และอื่นๆ



วิธีที่ 2: Wi-Fi Direct (รุ่นไร้สายเท่านั้น)

Wi-Fi Direct อนุญาตให้อุปกรณ์ที่ใช้งาน Wi-Fi ได้ อาทิเช่น สมาร์ทโฟน แท็บเล็ต หรือคอมพิวเตอร์ เชื่อมต่อกับเครื่องพิมพ์ผ่านเครือข่ายไร้สายได้โดยตรง โดยไม่ต้องใช้เราเตอร์หรือจุดเข้าใช้งานไร้สาย โดยวิธีการเชื่อมต่อกับสัญญาณ Wi-Fi Direct ของเครื่องพิมพ์จะเหมือนกับวิธีการเชื่อมต่ออุปกรณ์ที่ใช้ Wi-Fi ได้กับเครือข่ายไร้สายหรือฮอตสปอตใหม่ทั่วไป

เปิดใช้งาน Wi-Fi Direct

ในการตั้งค่า Wi-Fi Direct จากแผงควบคุม ให้ดำเนินการตามขั้นตอนต่อไปนี้จนเสร็จสมบูรณ์

1. จากหน้าจอหลักบนแผงควบคุมเครื่องพิมพ์ ให้แตะปุ่ม / ข้อมูลการเชื่อมต่อ และเปิดเมนูดังต่อไปนี้
 - Wi-Fi Direct
 - การตั้งค่า
 - เปิด/ปิด
2. แตะรายการเมนู **เปิด** เครื่องพิมพ์จะบันทึกการตั้งค่า แล้วย้อนกลับไปยังเมนู **การตั้งค่า Wi-Fi Direct** บนแผงควบคุม

ค้นหาเครื่องพิมพ์

1. เปิด Wi-Fi ในอุปกรณ์เคลื่อนที่ และค้นหาเครือข่ายไร้สาย
2. เลือกเครื่องพิมพ์ตามที่แสดงบนแผงควบคุมเครื่องพิมพ์ ตัวอย่างชื่อเครื่องพิมพ์ เช่น Direct-bb-HP M282 Laserjet

ศึกษาเพิ่มเติมเกี่ยวกับการพิมพ์ผ่านอุปกรณ์เคลื่อนที่

หากต้องการข้อมูลเพิ่มเติมเกี่ยวกับการพิมพ์ผ่านอุปกรณ์เคลื่อนที่และระบบปฏิบัติการอื่นๆ (Chrome/Google Cloud Print) ให้ไปที่ www.hp.com/go/LaserJetMobilePrinting หรือสแกนรหัส QR นี้



ใช้คุณสมบัติการสแกน

ใช้ซอฟต์แวร์ HP Scan ในคอมพิวเตอร์ เพื่อเริ่มงานสแกนที่เครื่องพิมพ์

Windows

คลิก **เริ่ม** เลือก **โปรแกรม** หรือ **โปรแกรมทั้งหมด** เลือก **HP** จากนั้นเลือก **HP Scan**

OS X

ไปที่โฟลเดอร์ **แอปพลิเคชัน** และเปิด **HP Smart**

การแก้ไขปัญหาเบื้องต้น

(๓) การแก้ไขปัญหาการเชื่อมต่อเครือข่ายไร้สาย

ตรวจสอบว่าเครื่องพิมพ์อยู่ภายในช่วงของเครือข่ายไร้สาย โดยในเครือข่ายส่วนใหญ่เครื่องพิมพ์ต้องอยู่ภายในช่วง 30 ม. (100 ฟุต) ของจุดเข้าใช้งานไร้สาย (เราเตอร์ไร้สาย) คุณอาจต้องใช้สาย USB เพื่อการเชื่อมต่อระหว่างเครื่องพิมพ์กับคอมพิวเตอร์ชั่วคราว และเพื่อให้มั่นใจว่าข้อมูลการตั้งค่าเครือข่ายไร้สายตรงกัน อย่าเพิ่งเชื่อมต่อสาย USB จนกว่าระบบจะพร้อมให้เชื่อมต่อ

ทำตามขั้นตอนเหล่านี้เพื่อเรียกคืนการตั้งค่าเครือข่าย

1. ถอดสาย USB ออกจากเครื่องพิมพ์
2. ไปยังเมนู **Setup** บนเครื่องพิมพ์ของคุณ เลือก **Network Setup** แล้วเลือก **Restore Defaults/Restore Network Settings** เครื่องพิมพ์จะคืนค่าเริ่มต้นเครือข่ายอัตโนมัติและเริ่มใหม่
3. ดำเนินการติดตั้งซอฟต์แวร์ต่อ

คู่มือผู้ใช้และทรัพยากรสนับสนุนเพิ่มเติม

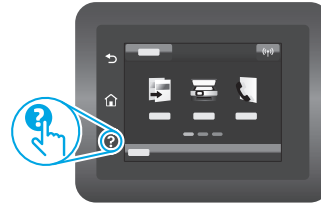
คู่มือผู้ใช้จะมีข้อมูลการใช้เครื่องพิมพ์ และการแก้ไขปัญหาเบื้องต้น ซึ่งหาได้จากในเว็บต่อไปนี้:
ไปที่ www.hp.com/support/lijm282MEF

ตรวจสอบอัปเดตเฟิร์มแวร์

1. ไปที่ www.hp.com/support/lijm282MEF
2. เลือกเครื่องพิมพ์หรือหมวดหมู่จากรายการ จากนั้นคลิก **Drivers** (ไดรเวอร์)
3. เลือกระบบปฏิบัติการ และคลิกปุ่ม **Next** (ถัดไป)
4. เลือก **Firmware** (เฟิร์มแวร์) และคลิกปุ่ม **Download** (ดาวน์โหลด)

วิธีใช้บนแผงควบคุม

แต่ละปุ่มวิธีใช้ ? บนแผงควบคุมเครื่องพิมพ์ เพื่อเข้าถึงหัวข้อวิธีใช้ต่างๆ



การพิมพ์แบบไร้สาย

หากต้องการข้อมูลเพิ่มเติมเกี่ยวกับการพิมพ์แบบไร้สายและการตั้งค่าระบบไร้สาย ให้ไปที่ www.hp.com/go/wirelessprinting





Color LaserJet Pro MFP M282-M285 參考指南

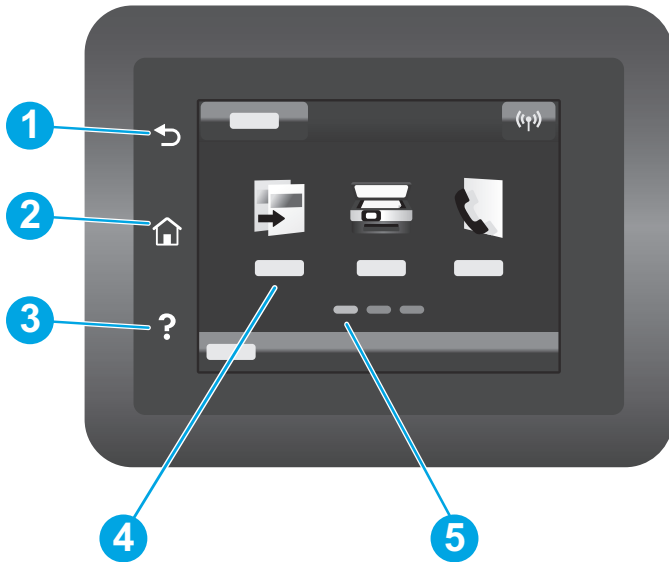
English.....	3
Bahasa Indonesia.....	6
한국어.....	9
ไทย.....	12
繁體中文.....	15
Tiếng Việt.....	18

需要說明？ - 常見問題解答

如需常見問題解答，請前往
www.hp.com/support/ljm282MFPFAQ，
或掃描 QR 代碼。



觸控螢幕控制面板視圖



- | | |
|---|---------|
| 1 | 返回按鈕 |
| 2 | 首頁按鈕 |
| 3 | 說明按鈕 |
| 4 | 彩色觸控螢幕 |
| 5 | 首頁畫面指示器 |

無線網路連線 (僅限無線機型)

使用觸控螢幕控制面板來設定無線連線：

附註：在設定無線連線之前，請先將印表機所連結的任何 USB 或網路纜線拔除。

1. 觸控**無線**圖示，接著觸控**網路 Wi-Fi**將其關閉，再觸控**設定**。
2. 觸控**無線設定精靈**，再從可用無線網路清單中選取您的網路名稱。

下載與安裝軟體

附註：在接獲提示前，請勿連接 USB 連接線。

方法 1：從 123.hp.com/laserjet 下載

1. 請前往 123.hp.com/laserjet (Windows) 或 123.hp.com (OS X)，然後按一下**下載**。
2. 請依照螢幕上的指示和提示，將檔案儲存至電腦。
3. 從儲存這個軟體檔案的資料夾中，啟動軟體檔案。
4. 依照螢幕上的指示，安裝軟體。
5. 在出現選擇連線類型的提示時，選擇適合連線類型的選項。

方法 2：從印表機支援網站下載 (Windows)

1. 前往 www.hp.com/support/ljM282MFP。
2. 選擇**軟體和驅動程式**。
3. 下載您印表機機型和作業系統適用的軟體。
4. 從儲存這個軟體檔案的資料夾中，啟動軟體檔案。
5. 依照螢幕上的指示，安裝軟體。
6. 在出現選擇連線類型的提示時，選擇適合連線類型的選項。

行動列印

方法 1：HP Smart

使用 HP Smart 應用程式，進行設定、列印和其他動作。

1. 掃描 QR 碼，或前往 123.hp.com。
2. 安裝 HP Smart 應用程式。
3. 執行 HP Smart 應用程式，然後依照畫面上的指示，進行連線、設定、列印和其他動作。



方法 2：Wi-Fi Direct (僅限無線機型)

Wi-Fi Direct 可讓具備 Wi-Fi 功能的裝置 (例如智慧型手機、平板電腦或電腦) 在沒有使用無線路由器或存取點的情況下，直接與印表機進行無線網路連線。使用具備 Wi-Fi 功能的裝置連接至新的無線網路或熱點的相同方法，連接印表機的 Wi-Fi Direct 訊號。

啟用 Wi-Fi Direct

若要從控制面板設定 Wi-Fi Direct，請完成下列步驟：

1. 在印表機控制面板的主畫面中，觸控連線資訊品/ⓘ 按鈕，下列功能表即可開啟：
 - Wi-Fi Direct
 - 設定
 - 開/關
2. 觸控**開啟**功能表項目。印表機將會儲存設定，且控制面板會接著返回 **Wi-Fi Direct 設定** 功能表。

探索印表機

1. 在行動裝置上，開啟 Wi-Fi，然後搜尋無線網路。
2. 選擇在印表機控制面板上所顯示的印表機名稱。
印表機名稱範例：Direct-bb-HP M282 Laserjet

進一步了解行動列印

如需有關這些和其他作業系統 (Chrome/Google 雲端列印) 的更多資訊，請前往 www.hp.com/go/LaserJetMobilePrinting，或掃描 QR 碼。



使用掃描功能

使用電腦上的 HP Scan 軟體，啟動印表機的掃描工作。

Windows

按一下**開始**，選取**程式集**或**所有程式**，接著選取 **HP**，再選擇 **HP Scan**。

OS X

前往**應用程式**資料夾，並開啟 **HP Smart**。

疑難排解

📶 無線連線設定疑難排解

確認印表機確實位於無線網路範圍內。對多數網路而言，印表機必須是在距離無線存取點(無線路由器) 30 公尺 (100 英尺) 以內的位置。可能需要使用 USB 纜線暫時連接印表機與電腦。為確保正確同步無線設定資訊，在出現提示前，請勿連接 USB 纜線。

依照這些步驟來還原網路設定：

1. 從印表機拔下 USB 連接線。
2. 前往印表機上的**設定功能表**，接著選取**網路設定**，然後選取**還原預設值/還原網路設定**。印表機將自動還原成網路預設值，並且重新開機。
3. 繼續執行安裝軟體。

使用指南和其他支援資源

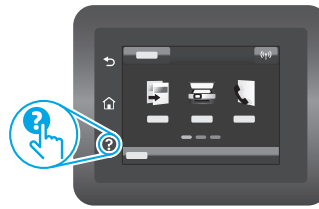
使用指南包含印表機使用方式及疑難排解資訊。使用指南也有提供網路版：前往 www.hp.com/support/ljM282MFP。

查看韌體更新

1. 前往 www.hp.com/support/ljM282MFP。
2. 從清單中選擇印表機或類別，然後按一下**驅動程式**。
3. 選擇作業系統，然後按一下**下一步**按鈕。
4. 選擇**韌體**，然後按一下**下載**按鈕。

控制面板說明

觸控印表機控制面板上說明 **?** 按鈕，即可存取說明主題。



📶 無線列印

如需關於無線列印及無線設定的詳細資訊，請前往 www.hp.com/go/wirelessprinting。



English.....	3
Bahasa Indonesia.....	6
한국어.....	9
ไทย.....	12
繁體中文.....	15




Color LaserJet Pro MFP M282-M285

Hướng dẫn tham khảo

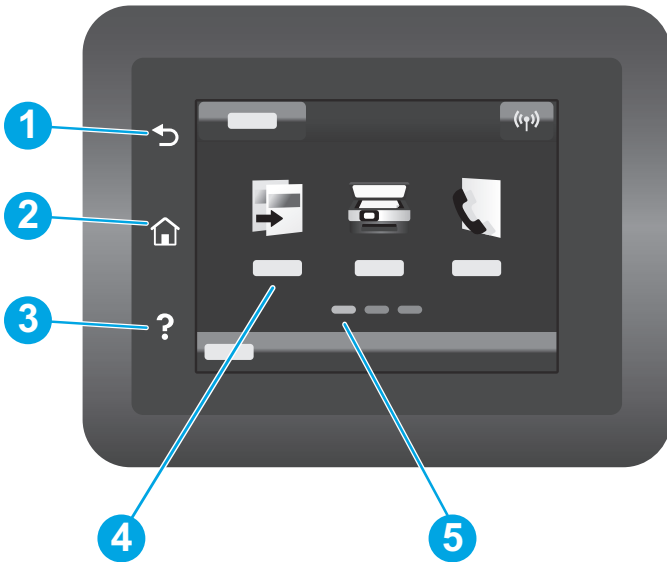
Tiếng Việt 18

Bạn cần hỗ trợ? - ⓘ Câu hỏi thường gặp

Để xem những câu hỏi thường gặp, hãy truy cập vào www.hp.com/support/ljM282MFPFAQ hoặc quét mã QR.



Giao diện bảng điều khiển màn hình cảm ứng



- | | |
|---|------------------------|
| 1 | Nút Quay lại |
| 2 | Nút Màn hình chính |
| 3 | Nút Trợ giúp |
| 4 | Màn hình cảm ứng màu |
| 5 | Chỉ báo màn hình chính |

Kết nối mạng không dây (chỉ dành cho kiểu máy không dây)

Sử dụng bảng điều khiển màn hình cảm ứng để thiết lập kết nối không dây:

Lưu ý: Trước khi thiết lập kết nối không dây, hãy ngắt kết nối USB hoặc dây cáp mạng khỏi máy in.

1. Chạm vào biểu tượng **Không dây**, chạm **Network Wi-Fi off** (tắt) rồi chạm vào **Setting** (Cài đặt).
2. Chạm vào **Wireless Setup Wizard** (Trình thiết lập không dây) rồi chọn tên mạng của bạn từ danh sách các mạng sẵn có.

Tải xuống và cài đặt phần mềm

LƯU Ý: Không cắm cáp USB cho tới khi bạn được nhắc làm điều đó.

Phương pháp 1: Tải xuống từ trang web 123.hp.com/laserjet

1. Truy cập vào 123.hp.com/laserjet (Windows) hoặc 123.hp.com (OS X) rồi nhấp vào **Download** (Tải xuống).
2. Làm theo hướng dẫn trên màn hình và trên lời nhắc để lưu tệp vào máy tính.
3. Khởi chạy tệp phần mềm từ thư mục lưu tệp.
4. Làm theo hướng dẫn trên màn hình để cài đặt phần mềm.
5. Khi được nhắc chọn loại kết nối, hãy chọn loại kết nối phù hợp.

Phương pháp 2: Tải xuống từ trang web hỗ trợ máy in (Windows)

1. Truy cập vào www.hp.com/support/ljM282MEP.
2. Chọn **Software and Drivers** (Phần mềm và trình điều khiển).
3. Tải xuống phần mềm cho kiểu máy in và hệ điều hành của bạn.
4. Khởi chạy tệp phần mềm từ thư mục lưu tệp.
5. Làm theo hướng dẫn trên màn hình để cài đặt phần mềm.
6. Khi được nhắc chọn loại kết nối, hãy chọn loại kết nối phù hợp.

In di động

Phương pháp 1: HP Smart

Sử dụng ứng dụng HP Smart để thiết lập, in và hơn thế nữa.

1. Quét mã QR hoặc truy cập vào 123.hp.com.
2. Cài đặt ứng dụng HP Smart.
3. Chạy ứng dụng HP Smart và làm theo hướng dẫn trên màn hình để kết nối, thiết lập, in và hơn thế nữa.




Phương pháp 2: Wi-Fi Direct (chỉ dành cho kiểu máy không dây)

Wi-Fi Direct cho phép các thiết bị tương thích với Wi-Fi (như điện thoại thông minh, máy tính bảng hoặc máy tính) kết nối không dây trực tiếp với máy in mà không cần sử dụng điểm truy cập hoặc bộ định tuyến không dây. Kết nối với tín hiệu Wi-Fi Direct của máy in theo cách giống như các thiết bị tương thích Wi-Fi kết nối với điểm truy cập hoặc mạng không dây mới.

Bật Wi-Fi Direct

Để thiết lập Wi-Fi Direct từ bảng điều khiển, hãy hoàn tất các bước sau:

1. Từ Màn hình chính trên bảng điều khiển máy in, hãy chạm vào nút Connection Information (Thông tin kết nối)  và mở các menu sau:
 - **Wi-Fi Direct**
 - **Settings** (Cài đặt)
 - **On/Off** (Bật/Tắt)
2. Chạm vào mục **On** (Bật) trên menu. Máy in sẽ lưu tùy chọn cài đặt và bảng điều khiển sẽ quay lại menu **Wi-Fi Direct Settings** (Cài đặt Wi-Fi Direct).

Phát hiện máy in

1. Từ thiết bị di động, bật Wi-Fi và tìm mạng không dây.
2. Chọn máy in như hiển thị trên bảng điều khiển máy in. **Ví dụ:** Direct-bb-HP M282 Laserjet.

Tìm hiểu thêm về tính năng in từ thiết bị di động

Để biết thêm thông tin về các nội dung này và các hệ điều hành khác (Chrome/Google Cloud Print), hãy truy cập vào www.hp.com/go/LaserJetMobilePrinting hoặc quét mã QR.



Sử dụng tính năng quét

Hãy sử dụng phần mềm HP Scan trên máy tính của bạn để bắt đầu lệnh quét trên máy in.

Windows

Nhấp vào **Start** (Bắt đầu), chọn **Programs** (Chương trình) hoặc **All Programs** (Tất cả chương trình), chọn **HP**, sau đó chọn **HP Scan**.

OS X

Chuyển tới thư mục **Applications** (Ứng dụng) và mở **HP Smart**.

Khắc phục sự cố

Khắc phục sự cố kết nối không dây

Xác minh rằng máy in nằm trong phạm vi của mạng không dây. Đối với hầu hết các mạng, máy in phải nằm trong phạm vi 30 m (100 ft) của điểm truy cập không dây (bộ định tuyến mạng không dây). Có thể cần sử dụng cáp USB để kết nối tạm thời giữa máy in và máy tính. Đảm bảo rằng thông tin thiết lập không dây đồng bộ chính xác, không kết nối cáp USB cho đến khi được nhắc làm vậy.

Làm theo các bước sau để khôi phục cài đặt mạng:

1. Tháo cáp USB khỏi máy in.
2. Chuyển tới menu **Setup** (Cài đặt) trên máy in, chọn **Network Setup** (Cài đặt mạng), rồi chọn **Restore Defaults** (Khôi phục mặc định)/**Restore Network Settings** (Khôi phục cài đặt mạng). Máy in sẽ tự động khôi phục cài đặt mạng mặc định và khởi động lại.
3. Tiếp tục cài đặt phần mềm.

Tài nguyên hỗ trợ bổ sung và hướng dẫn sử dụng

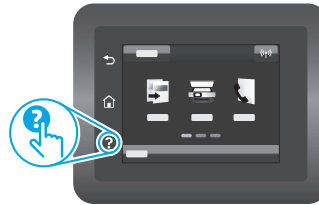
Hướng dẫn sử dụng chứa thông tin về cách sử dụng và khắc phục sự cố với máy in. Bạn có thể xem hướng dẫn này trên trang web: Truy cập vào www.hp.com/support/ljM282MFP.

Kiểm tra các bản cập nhật của chương trình cơ sở

1. Truy cập vào www.hp.com/support/ljM282MFP.
2. Chọn máy in hoặc danh mục từ danh sách, sau đó nhấp vào **Drivers** (Trình điều khiển).
3. Chọn hệ điều hành và nhấp vào nút **Next** (Tiếp).
4. Chọn **Firmware** (Chương trình cơ sở) và nhấp vào nút **Download** (Tải xuống).

Trợ giúp bằng điều khiển

Chạm vào nút Help (Trợ giúp)  trên bảng điều khiển máy in để truy cập các chủ đề trợ giúp.



In không dây

Để biết thêm thông tin về thiết lập mạng không dây và in không dây, hãy truy cập vào www.hp.com/go/wirelessprinting.



Reproduction, adaptation or translation without prior written permission is prohibited, except as allowed under the copyright laws.

The information contained herein is subject to change without notice.

The only warranties for HP products and services are set forth in the express warranty statements accompanying such products and services. Nothing herein should be construed as constituting an additional warranty. HP shall not be liable for technical or editorial errors or omissions contained herein.

Trademark Credits

Windows® is a U.S. registered trademark of Microsoft Corporation.

Apple and the Apple logo are trademarks of Apple Inc., registered in the U.S. and other countries.

App Store is a service mark of Apple Inc. Android, Google Play, and the Google Play logo are trademarks of Google Inc.

OS X is a trademark of Apple Inc., registered in the U.S. and other countries.

AirPrint is a trademark of Apple Inc., registered in the U.S. and other countries.



HP Color LaserJet Pro MFP M282nw, M283cdw, M283fdn, M283fdw

Informasi Importir

PT. Hewlett Packard Indonesia Gedung Perkantoran Prudential Center Kota Kasablanka Lantai 9, Jl. Casablanca Kav.88 Kel. Menteng Dalam, Kec. Tebet, Kota Administrasi Jakarta Selatan 12870

Petunjuk Pemeliharaan

Petunjuk Pemeliharaan Lakukan prosedur pencegahan dasar setiap kali hendak menggunakan printer ini untuk mengurangi resiko cedera karena terbakar atau sengatan listrik:

1. Bacalah dan pahami seluruh petunjuk dalam dokumentasi yang menyertai printer.
2. Perhatikan semua tanda peringatan dan petunjuk yang tertera pada printer.
3. Cabut kabel printer dari stopkontak sebelum membersihkan.
4. Jangan memasang atau menggunakan printer ini dekat air atau saat Anda basah.
5. Letakkan printer dengan benar pada permukaan yang stabil.
6. Letakkan printer di lokasi yang aman dimana tak seorangpun dapat menginjak atau tersangkut kabel daya, dan agar kabel daya tidak rusak.
7. Jika printer tak beroperasi dengan normal, lihat berkas bantuan (tersedia di komputer begitu perangkat lunak telah diinstallkan).
8. Tidak ada komponen bagian dalam yang dapat diperbaiki pengguna. Serahkan perbaikan kepada petugas servis resmi.
9. Gunakan hanya dengan kabel daya dan adaptor daya yang disediakan HP.

www.hp.com

