

Interactive BIOS simulator

HP ENVY x2 12-g000 Detachable PC

Welcome to the interactive BIOS simulator for the
HP ENVY x2 12-g000 Detachable PC

Here's how to use it...

[BIOS Utility Menus](#): (Click the link to navigate to the individual menus)

On this page you will find thumbnail images of each of the product's BIOS utility menus. To view a specific menu in greater detail, simply click that thumbnail. Just as in the live BIOS, on each menu, you can select the tab of each of the other utility menus to navigate directly to that menu.

Menu options:

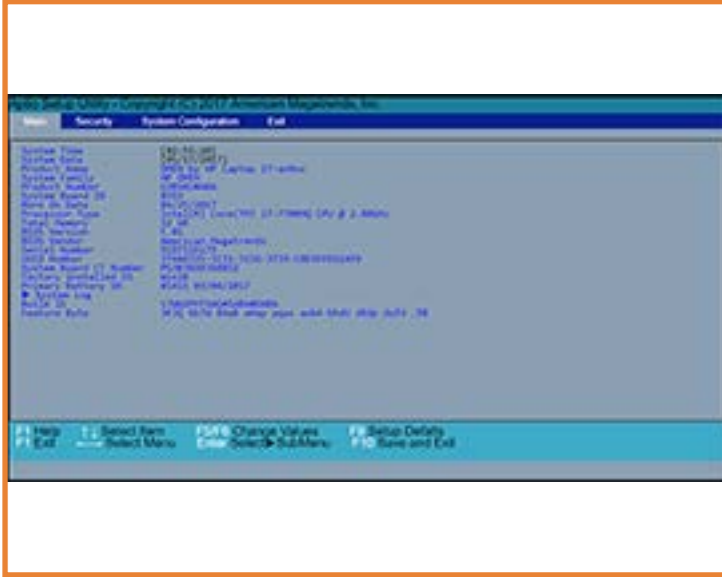
While the menu options cannot be toggled, many of them offer item specific information about that option. To view this information, use the cursor to rollover the option and the information will present in a pane on the right of the BIOS screen.

That's it!

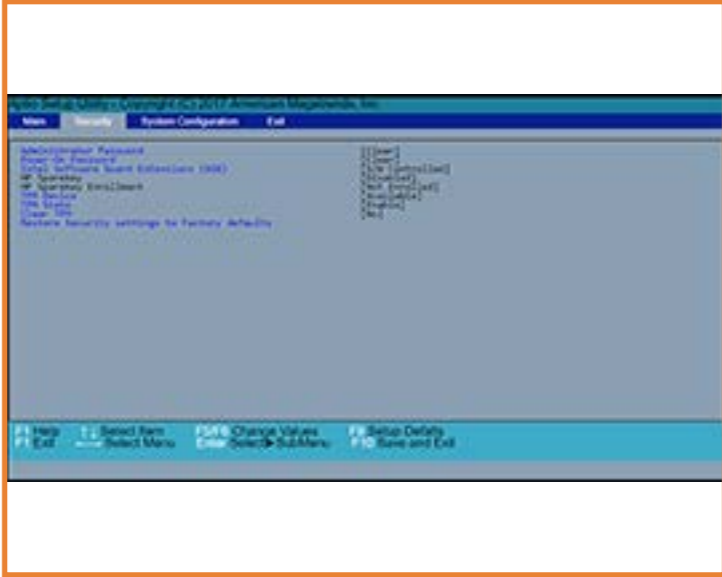
On every page there is a link that brings you back to either this [Welcome](#) page or the [BIOS Utility Menus](#) page enabling you to navigate to whatever BIOS option you wish to review.

BIOS Utility Menus

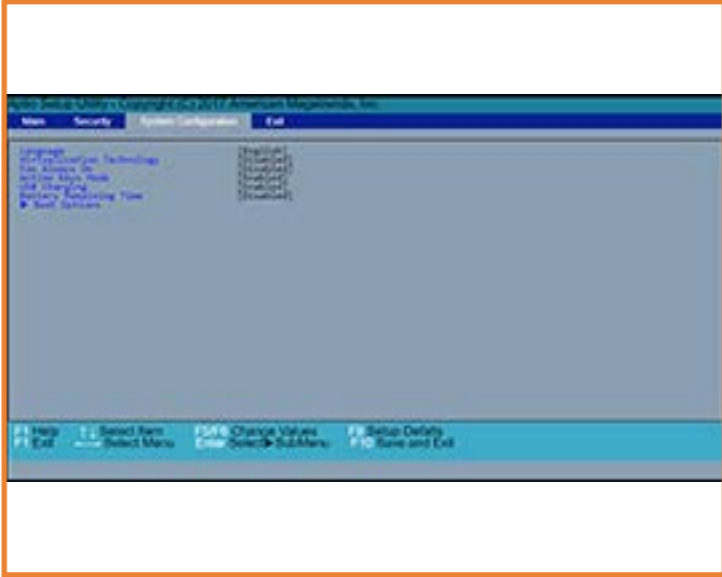
Back to Welcome Page



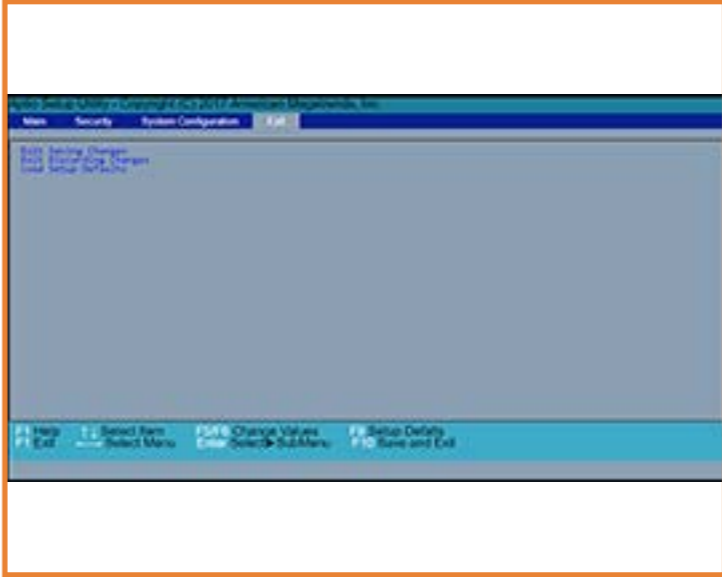
Main



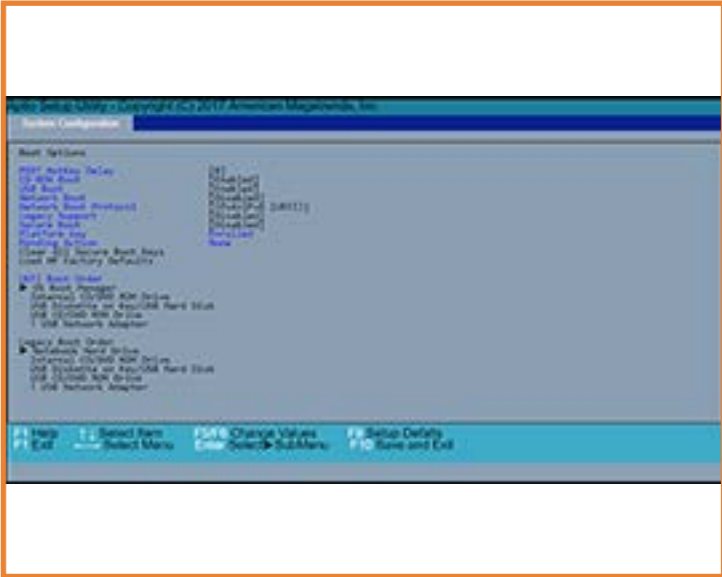
Security



System Configuration



Exit



Boot Options

Main Menu

Back to BIOS Utility Menus

Aptio Setup Utility - Copyright (C) 2017 American Megatrends, Inc

Main Security System Configuration Exit

System Time	[02:55:20]	Item Specific Help
System Date	[08/14/2017]	
Product Name	HP ENVY x2 Detachable 12-g0xx	
System Family	HP Envy	
Product Number	x33SKU2#ABA	
System Board ID	83B9	
Born On Date	00/00/0000	
Processor Type	Intel(R) Core i5-7Y54 CPU @ 1.2GHz	
Total memory	8 GB	
BIOS Version	B.08	
BIOS Vendor	American Megatrends	
Serial Number	5CD728521R	
UUID Number	37444335-3832-3235-3152-523238324435	
System Board CT Number	PX338018J85008	
Factory installed OS	Win 10	
Primary Battery SN	25077 06/20/2017	
▶ System Log		
Build ID	17WW3CPT6ag#SABA#DABA	
Feature Byte	3K6Z 6b7N 7WaB aHap aqas awbV bhbz zAcb dUdX dpdq ew .8f	

F1 Help ↑ ↓ Select Item F5/F6 Change Values F9 Setup Defaults
F1 Exit ← → Select Menu Enter Select ▶ SubMenu F10 Save and Exit

Back to Welcome Page

Security Menu

Back to BIOS Utility Menus

Aptio Setup Utility - Copyright (C) 2017 American Megatrends, Inc

Main Security System Configuration Exit

Adminstrator Password	[Clear]	Item Specific Help
Power-On Password	[Clear]	
Intel Software Guard Extensions (SGX)	[Enabled]	
HP Sparekey	[Disabled]	
HP Sparekey Enrollment	[Not Enrolled]	
TPM Device	[Available]	
TPM State	[Enable]	
Clear TPM	[No]	
Restore Security settings to Factory defaults		

F1 Help ↑ ↓ Select Item F5/F6 Change Values F9 Setup Defaults
F1 Exit ← → Select Menu Enter Select SubMenu F10 Save and Exit

Back to Welcome Page

System Configuration Menu

Back to BIOS Utility Menus

The screenshot shows the 'System Configuration' menu in the Aptio Setup Utility. The title bar reads 'Aptio Setup Utility - Copyright (C) 2017 American Megatrends, Inc'. The menu has four tabs: 'Main', 'Security', 'System Configuration' (which is active), and 'Exit'. The main area lists several settings with their current values: Language [English], Virtualization Technology [Disabled], Fan Always On [Disabled], Action Keys Mode [Enabled], USB Charging [Enabled], Battery Remaining Time [Disabled], Boot Options [Performance], System Power Scheme [Enabled], and Touchpad function [Enabled]. A right-hand pane is titled 'Item Specific Help'. At the bottom, a legend explains the navigation keys: F1 for Help/Exit, arrow keys for selecting items and menus, F5/F6 for changing values, Enter for selecting sub-menus, F9 for setup defaults, and F10 for save and exit.

Setting	Value
Language	[English]
Virtualization Technology	[Disabled]
Fan Always On	[Disabled]
Action Keys Mode	[Enabled]
USB Charging	[Enabled]
Battery Remaining Time	[Disabled]
▶ Boot Options	[Performance]
System Power Scheme	[Enabled]
Touchpad function	[Enabled]

Item Specific Help

Navigation Legend:
F1 Help / F1 Exit
↑ ↓ Select Item
← → Select Menu
F5/F6 Change Values
Enter Select SubMenu
F9 Setup Defaults
F10 Save and Exit

Back to Welcome Page

Exit Menu

Back to BIOS Utility Menus

Aptio Setup Utility - Copyright (C) 2017 American Megatrends, Inc

Main Security System Configuration Exit

Exit Saving Changes
Exit Discarding Changes
Load Setup Defaults

Item Specific Help

F1 Help ↑↓ Select Item F5/F6 Change Values F9 Setup Defaults
F1 Exit ←→ Select Menu Enter Select SubMenu F10 Save and Exit

Back to Welcome Page

Boot Options Menu

Back to BIOS Utility Menus

Aptio Setup Utility - Copyright (C) 2017 American Megatrends, Inc

System Configuration

Boot Options

POST HotKey Delay	[0]
USB Boot	[Enabled]
Network Boot	[Disabled]
Network Boot Protocol	[IPv4+IPv6 (UEFI)]
Legacy Support	[Disabled]
Secure Boot	[Disabled]
Platform key	Enrolled
Pending Action	None

Clear All Secure Boot Keys
Load HP Factory Defaults
Load MSFT Debug Policy Keys

UEFI Boot Order

- ▶ OS Boot Manager
- USB Diskette on Key/USB Hard Disk
- USB CD/DVD ROM Drive
- ! USB Network Adapter

Legacy Boot Order

- ▶ Notebook Hard Drive
- USB Diskette on Key/USB Hard Disk
- USB CD/DVD ROM Drive
- ! USB Network Adapter

Item Specific Help

F9	F10	F11	F12
F5	F6	F7	F8
F1	F2	F3	F4
Esc	Enter		

F1 Help ↑ ↓ Select Item F5/F6 Change Values F9 Setup Defaults
F1 Exit ← → Select Menu Enter Select ▶ SubMenu F10 Save and Exit

Back to Welcome Page