

# Interactive BIOS simulator

## HP Pavilion 15 Laptop PCs

Welcome to the interactive BIOS simulator for the  
HP Pavilion 15-cs0000/15-cu0000 Laptop PCs

### Here's how to use it...

[BIOS Utility Menus](#): (Click the link to navigate to the individual menus)

On this page you will find thumbnail images of each of the product's BIOS utility menus. To view a specific menu in greater detail, simply click that thumbnail. Just as in the live BIOS, on each menu, you can select the tab of each of the other utility menus to navigate directly to that menu.

### Menu options:

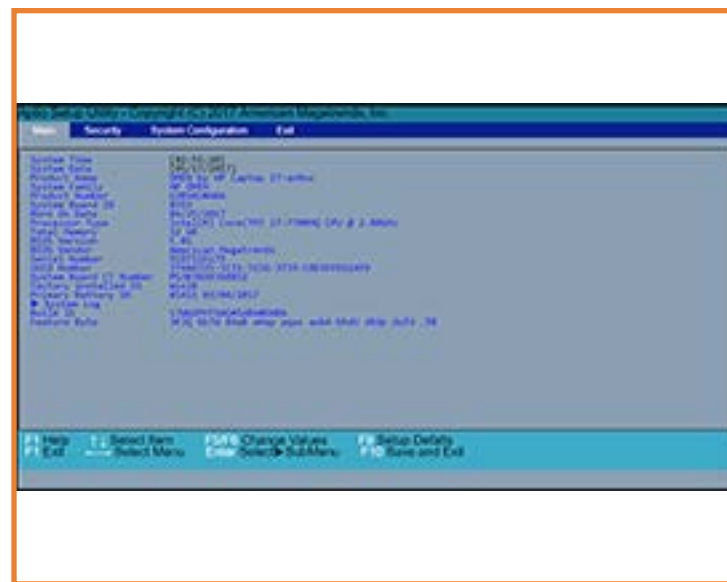
While the menu options cannot be toggled, many of them offer item specific information about that option. To view this information, use the cursor to rollover the option and the information will present in a pane on the right of the BIOS screen.

### That's it!

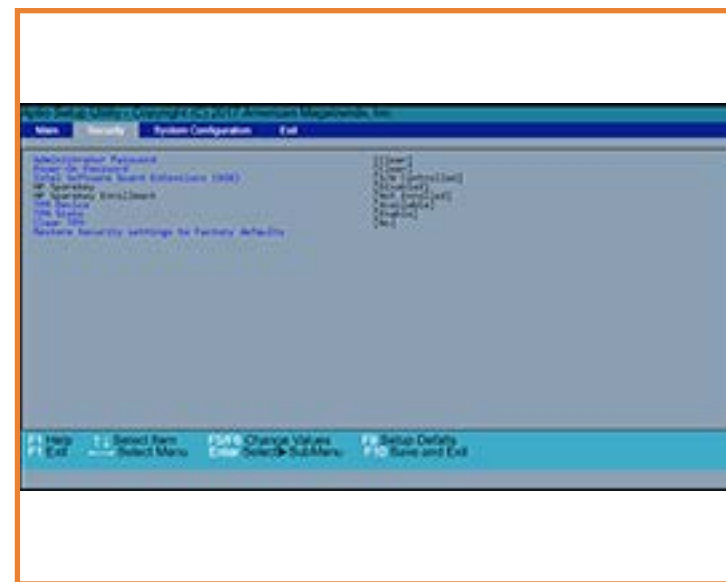
**On every page there is a link that brings you back to either this Welcome page or the BIOS Utility Menus page enabling you to navigate to whatever BIOS option you wish to review.**

# BIOS Utility Menus

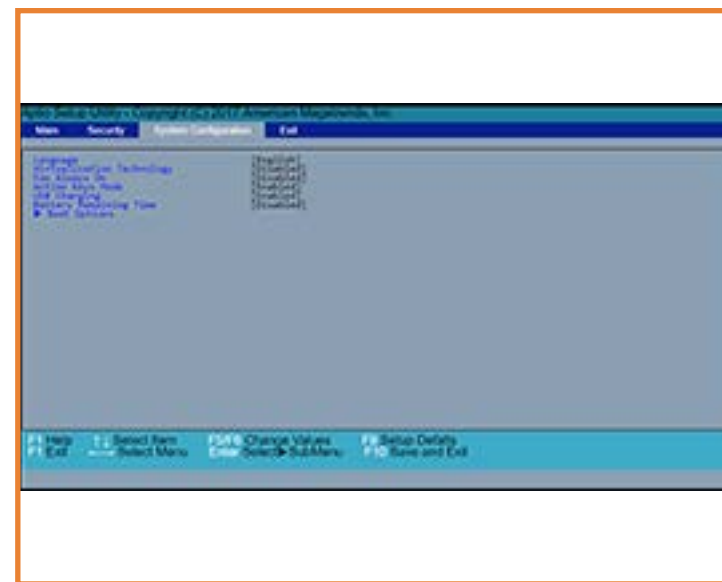
## Back to Welcome Page



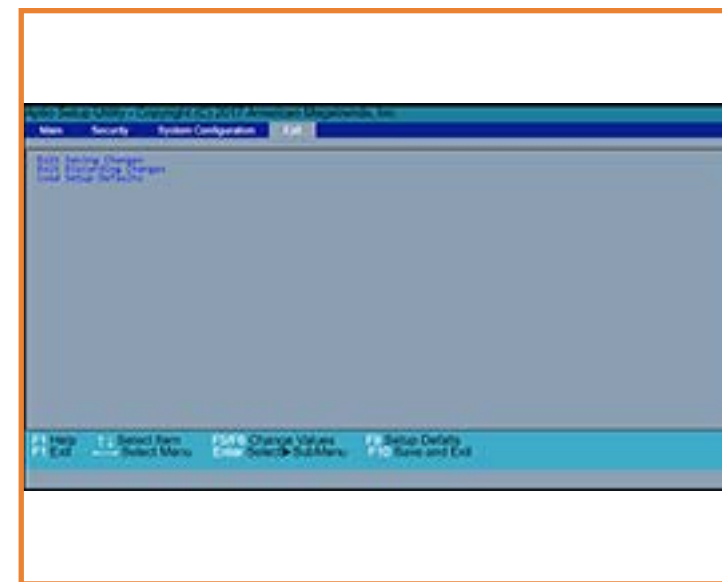
# Main



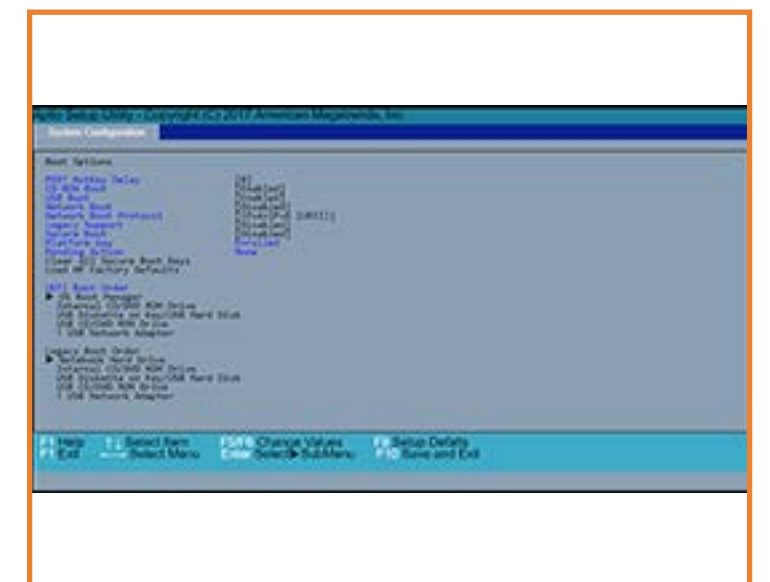
## Security



## System Configuration



## Exit



## Boot Options

# Main Menu

Back to BIOS Utility Menus

InsydeH20 Setup Utility

Rev. 5.0

MainSecuritySystem ConfigurationExit

System Time

System Date

Product Name

Product Family

Product Number

System Board ID

Born On Date

Processor Type

Total Memory

BIOS Version

BIOS Vendor

Serial Number

UUID Number

System Board CT Number

Factory installed OS

Primary Battery SN

▶ System Log

Build ID

Feature Byte

[02:55:20]

[03/29/2017]

HP Pavilion Laptop 15-cs0xxx/15-cu0xxx

HP Pavilion

G7BSKU1#ABA

84BE

00/00/0000

Intel(R) Core(TM) i3-8130U CPU @ 2.20GHz

8 GB

B.07111

Insyde

5CD8031S9F

38444335-3330-5331-3946-80CE623CC823

PG7B6AC8JAA018

Win 10

01107 12/25/2017

18WW1LAT6af#SABA#DABA

6K6Z 6b7B 7K7M 7WaB apaq asaw bCbh bacb dUdp dqfP .qY

Item Specific Help

F1 Help

F1 Exit

↑↓

←→

Select Item

Select Menu

F5/F6

Enter

Change Values

Select▶

F9

F10

Setup Defaults

Save and Exit

Back to Welcome Page

# Security Menu

[Back to BIOS Utility Menus](#)

InsydeH20 Setup Utility

Rev. 5.0

MainSecuritySystem ConfigurationExit

Adminstrator Password  
Power-On Password  
TPM Device  
TPM State  
Clear TPM  
Intel Software Guard Extensions (SGX)  
Restore Security settings to Factory defaults

[Clear]  
[Clear]  
[Available]  
[Enable]  
[No]  
[S/W Controlled]

Item Specific Help

F1 Help  
F1 Exit

↑↓  
←→

Select Item  
Select Menu

F5/F6  
Enter

Change Values  
Select SubMenu

F9  
F10

Setup Defaults  
Save and Exit

[Back to Welcome Page](#)

# System Configuration Menu

[Back to BIOS Utility Menus](#)

InsydeH20 Setup Utility

Rev. 5.0

MainSecuritySystem ConfigurationExit

Language[English]  
Virtualization Technology[Disabled]  
Fan Always On[Disabled]  
Action Keys Mode[Enabled]  
Battery Remaininng Time[Disabled]  
▶ Boot Options  
▶ UEFI Device Configuration

Item Specific Help

F1 Help  
F1 Exit

↑↓ Select Item  
←→ Select Menu

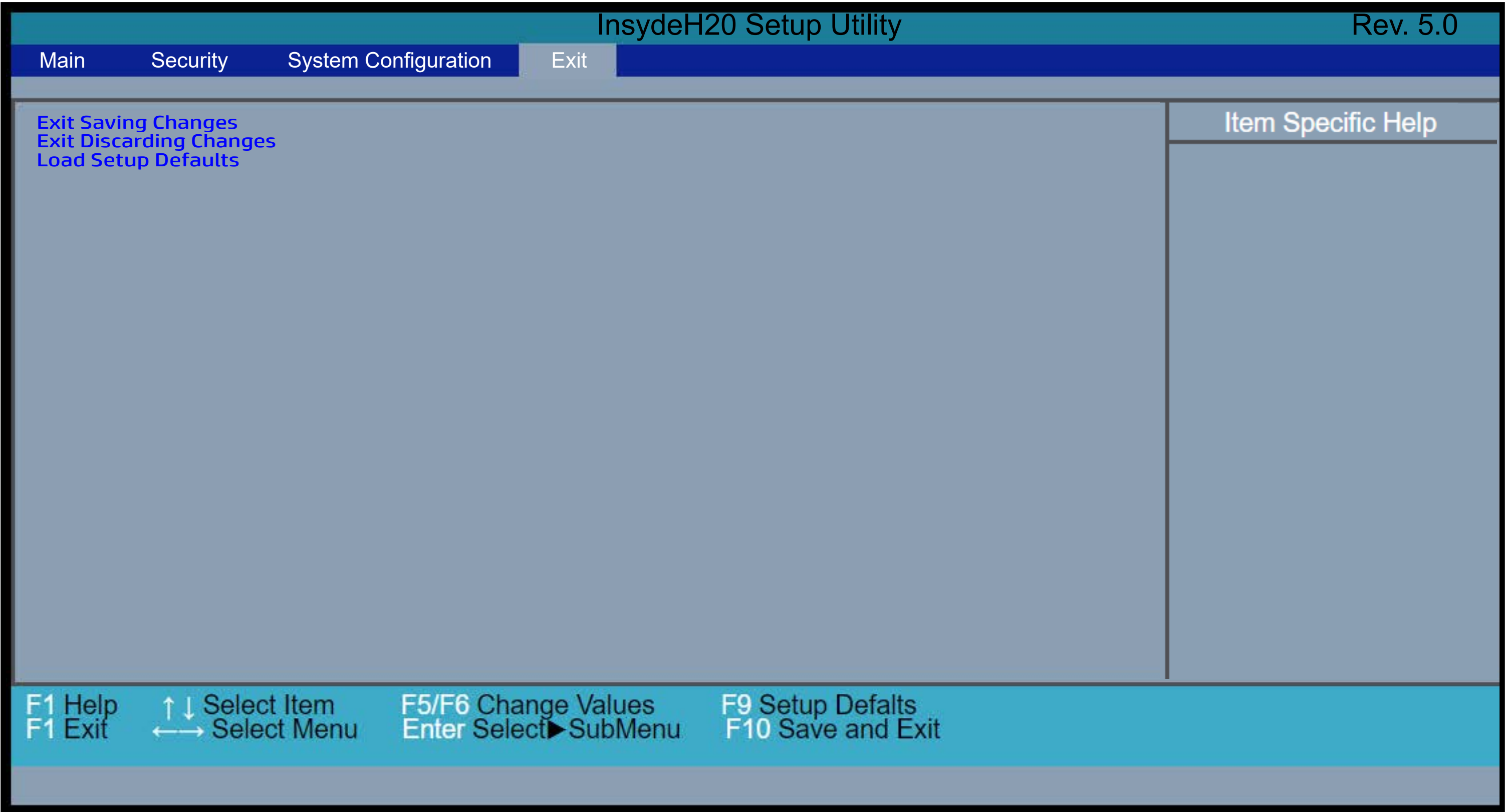
F5/F6 Change Values  
Enter Select▶ SubMenu

F9 Setup Defaults  
F10 Save and Exit

[Back to Welcome Page](#)

# Exit Menu

[Back to BIOS Utility Menus](#)



[Back to Welcome Page](#)

# Boot Options Menu

[Back to BIOS Utility Menus](#)

Aptio Setup Utility - Copyright (C) 2017 American Megatrends, Inc

System Configuration

Boot Options

POST HotKey Delay

[0]

USB Boot

[Enabled]

Network Boot

[Disabled]

Network Boot Protocol

[IPv4+IPv6 (UEFI)]

Legacy Support

[Disabled]

Secure Boot

[Disabled]

Platform key

Not Enrolled

Pending Action

None

Clear All Secure Boot Keys

Load HP Factory Defaults

Load MSFT Debug Policy Keys

UEFI Boot Order

▶OS Boot Manager

USB Diskette on Key/USB Hard Disk

USB CD/DVD ROM Drive

! USB Network Adapter

Legacy Boot Order

Notebook Hard Drive

USB Diskette on Key/USB Hard Disk

! USB Network Adapter

Item Specific Help

F1 Help

↑ ↓ Select Item

F1 Exit

← → Select Menu

F5/F6 Change Values

Enter Select ▶ SubMenu

F9 Setup Defaults

F10 Save and Exit

[Back to Welcome Page](#)