

Interactive BIOS simulator

HP Stream 11-ak0000 Laptop PC

Welcome to the interactive BIOS simulator for the
HP Stream 11-ak0000 Laptop PC

Here's how to use it...

[BIOS Utility Menus](#): (Click the link to navigate to the individual menus)

On this page you will find thumbnail images of each of the product's BIOS utility menus. To view a specific menu in greater detail, simply click that thumbnail. Just as in the live BIOS, on each menu, you can select the tab of each of the other utility menus to navigate directly to that menu.

Menu options:

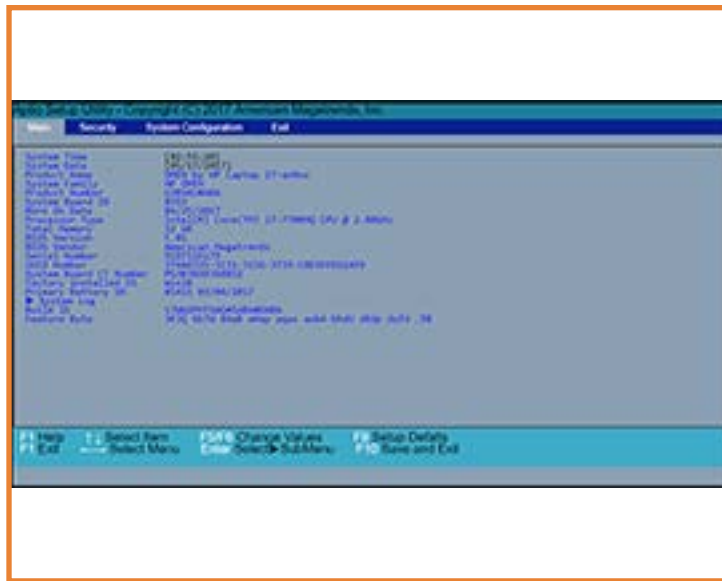
While the menu options cannot be toggled, many of them offer item specific information about that option. To view this information, use the cursor to rollover the option and the information will present in a pane on the right of the BIOS screen.

That's it!

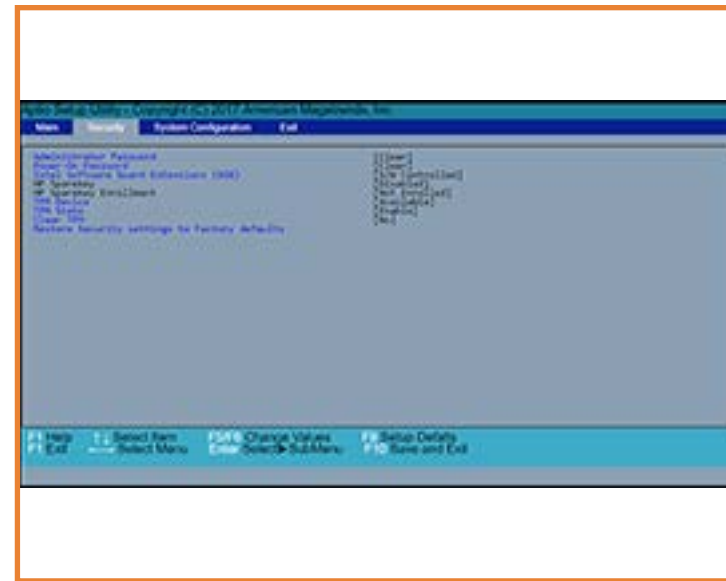
On every page there is a link that brings you back to either this Welcome page or the BIOS Utility Menus page enabling you to navigate to whatever BIOS option you wish to review.

BIOS Utility Menus

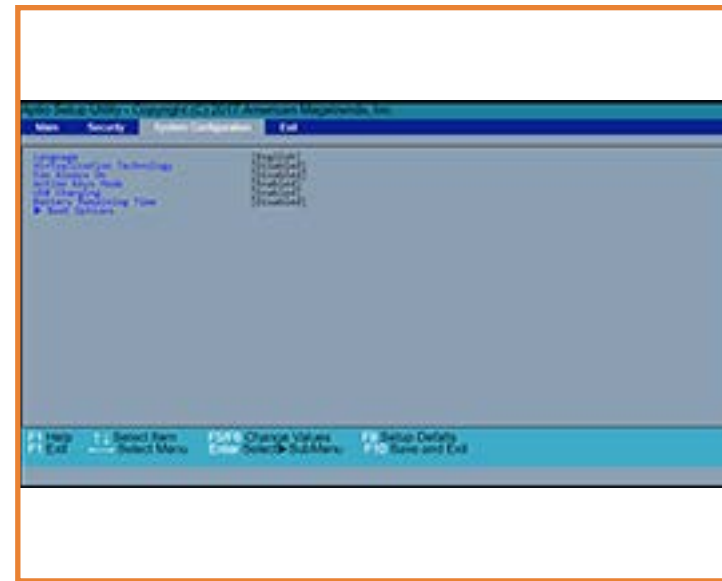
Back to Welcome Page



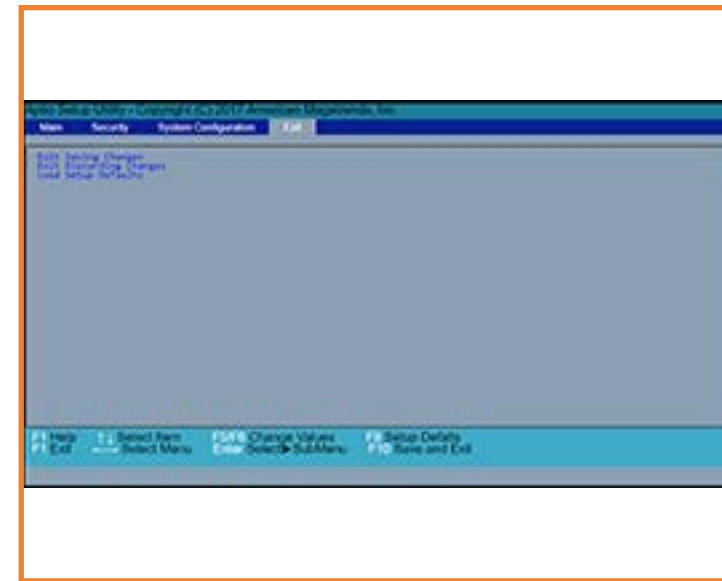
Main



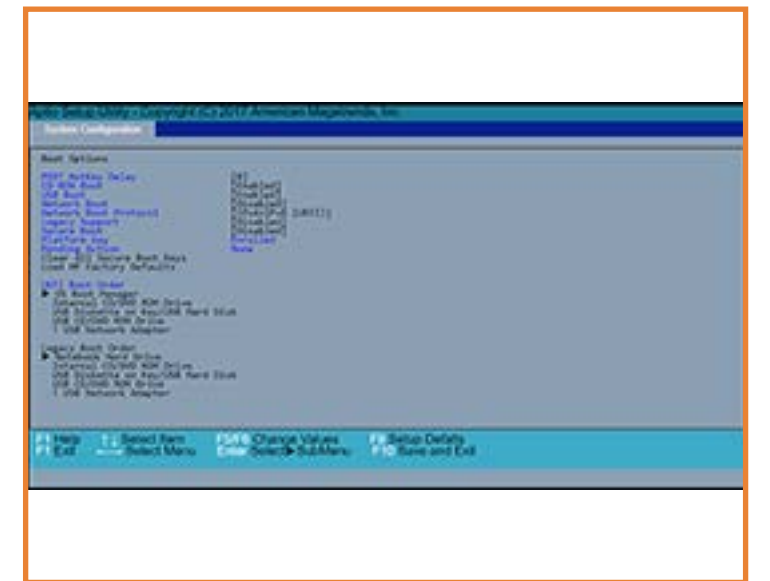
Security



System Configuration



Exit



Boot Options

Main Menu

[Back to BIOS Utility Menus](#)

BIOS Setup Utility

Rev.5.0

MainSecuritySystem ConfigurationExit

System Time[02:55:20]

System Date[01/01/2018]

Product NameHP Stream Laptop 11-ak0xxx

Product FamilyHP Stream

Product Number5XL20AS#ABU

System Board ID85B6

Born On Date03/25/2019

Processor TypeIntel(R) Celeron(R) N4000 CPU @ 1.10GHz

Total memory2 GB

BIOS VendorInsyde

BIOS VersionF.02

Serial Number5CD85055BG

UUID Number38444335-3035-4247-473530354435

System Board CT NumberPHVAK018JBK02Q

Factory inststalled OSWin 10

Primary Battery SN03753 11/09/2018

▶ System Log

Build ID18WW2C0X601#SABU#DABU

Feature Byte3K69 6b7B 7K7M 7WaB apaq asaw bCbh cbd8 dTdU dYdq fPfR hY .TF

Item Specific Help

F1 HelpF1 Exit

↑↓ Select Item
←→ Select Menu

F5/F6 Change Values
Enter Select▶ SubMenu

F9 Setup Defaults
F10 Save and Exit

[Back to Welcome Page](#)

Security Menu

[Back to BIOS Utility Menus](#)

BIOS Setup Utility

Rev.5.0

MainSecuritySystem ConfigurationExit

Adminstrator Password

Power-On Password

Intel Software Guard Extensions (SGX)

TPM Device

TPM State

Clear TPM

Secure Erase

Restore Security settings to Factory defaults

[Clear]

[Clear]

[S/W Controlled]

[Available]

[Enable]

[No]

Item Specific Help

F1 Help

F1 Exit

↑↓

Select Item

←→

Select Menu

F5/F6

Change Values

Enter

Select

SubMenu

F9

Setup Defaults

F10

Save and Exit

[Back to Welcome Page](#)

System Configuration Menu

[Back to BIOS Utility Menus](#)

BIOS Setup Utility

Rev.5.0

MainSecuritySystem ConfigurationExit

Language[English]
Virtualization Technology[Disabled]
Action Keys Mode[Enabled]
Battery Remaininng Time[Disabled]
▶ Boot Options

Item Specific Help

F1 Help
F1 Exit

↑↓ Select Item
←→ Select Menu

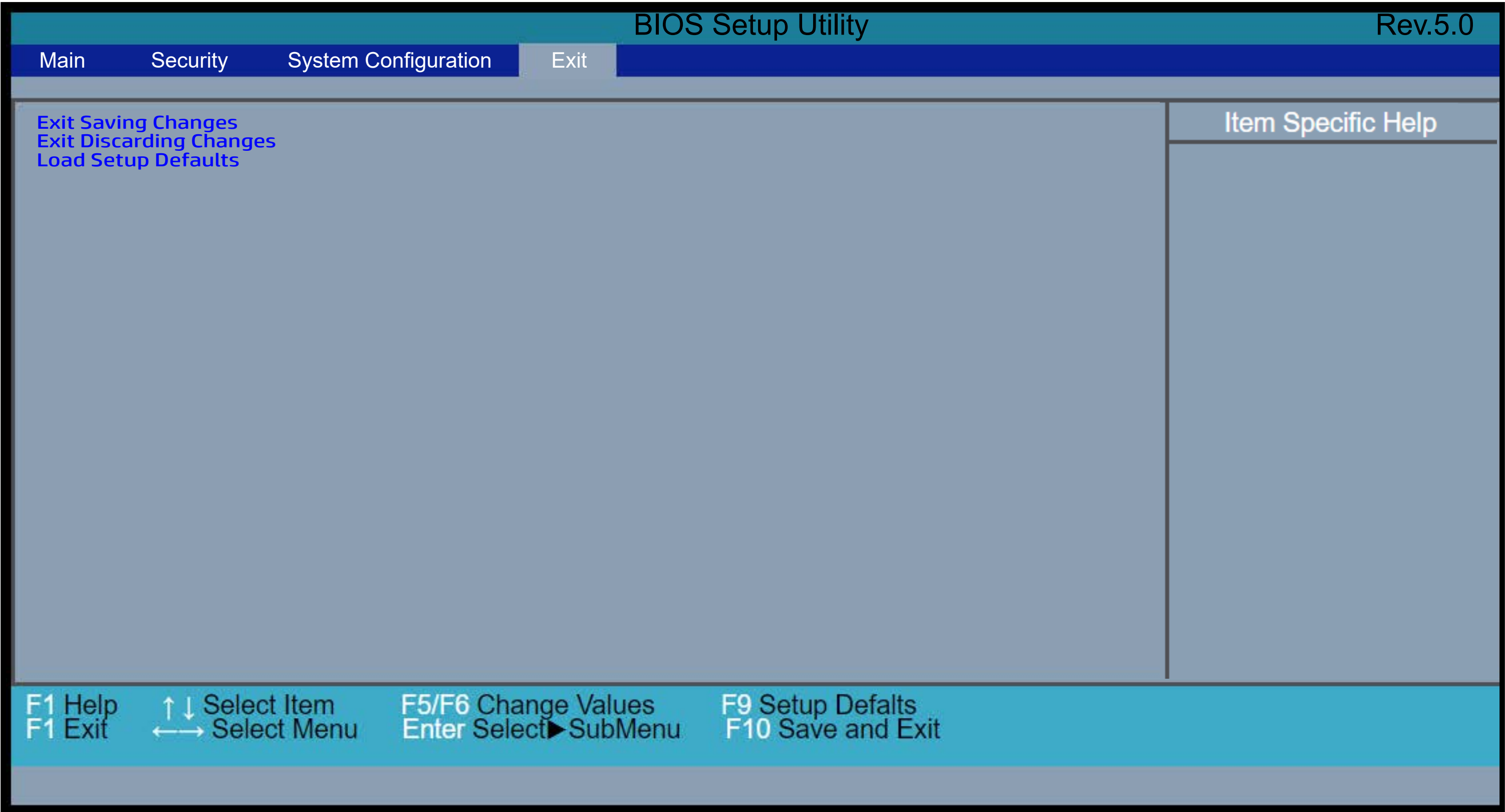
F5/F6 Change Values
Enter Select▶ SubMenu

F9 Setup Defaults
F10 Save and Exit

[Back to Welcome Page](#)

Exit Menu

[Back to BIOS Utility Menus](#)



[Back to Welcome Page](#)

Boot Options Menu

[Back to BIOS Utility Menus](#)

BIOS Setup Utility

Rev.5.0

System Configuration

Boot Options

POST HotKey Delay

USB Boot

Network Boot

Network Boot Protocol

Legacy Support

Secure Boot

Platform key

Pending Action

Clear All Secure Boot Keys

Load HP Factory Defaults

[0]

[Enabled]

[Disabled]

[IPv4+IPv6 (UEFI)]

[Disabled]

[Disabled]

Not Enrolled

None

UEFI Boot Order

► OS Boot Manager

USB Diskette on Key/USB Hard Disk

USB CD/DVD ROM Drive

! USB Network Adapter

Legacy Boot Order

Notebook Hard Drive

USB Diskette on Key/USB Hard Disk

USB CD/DVD ROM Drive

! USB Network Adapter

Item Specific Help

F1 Help

F1 Exit

↑ ↓

← →

Select Item

Select Menu

F5/F6

Enter

Change Values

Select ►

F9

F10

Setup Defaults

Save and Exit

[Back to Welcome Page](#)