

Interactive BIOS simulator

HP Stream 11 ak-1000 Laptop PC

Welcome to the interactive BIOS simulator for the
HP Stream 11 ak-1000 Laptop PC

Here's how to use it...

[BIOS Utility Menus](#): (Click the link to navigate to the individual menus)

On this page you will find thumbnail images of each of the product's BIOS utility menus. To view a specific menu in greater detail, simply click that thumbnail. Just as in the live BIOS, on each menu, you can select the tab of each of the other utility menus to navigate directly to that menu.

Menu options:

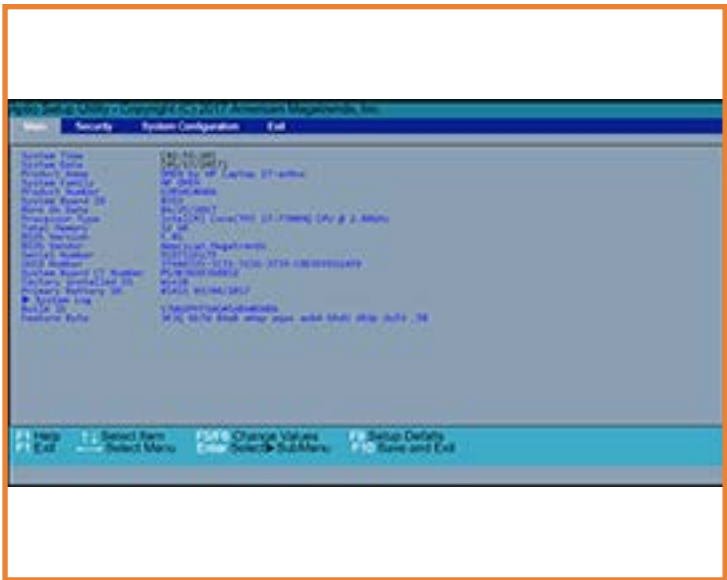
While the menu options cannot be toggled, many of them offer item specific information about that option. To view this information, use the cursor to rollover the option and the information will present in a pane on the right of the BIOS screen.

That's it!

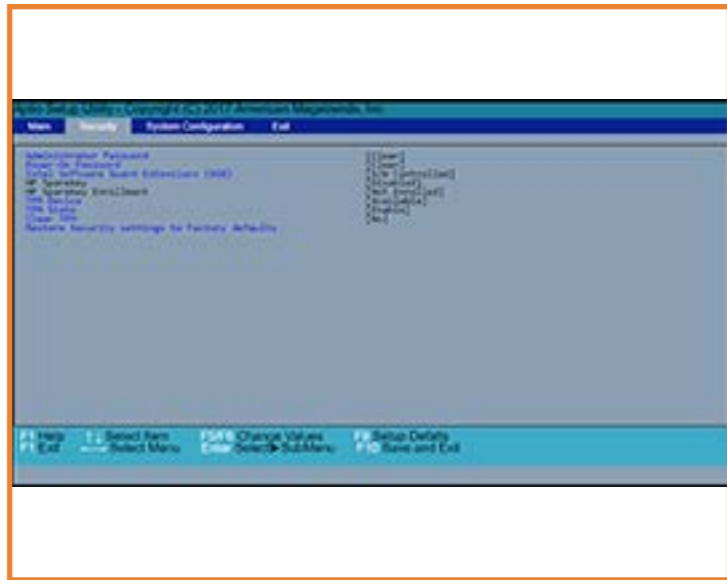
On every page there is a link that brings you back to either this [Welcome](#) page or the [BIOS Utility Menus](#) page enabling you to navigate to whatever BIOS option you wish to review.

BIOS Utility Menus

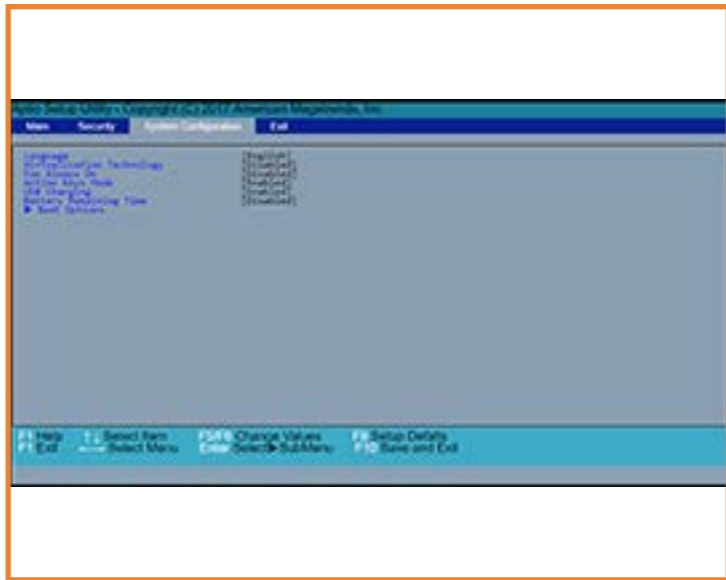
[Back to Welcome Page](#)



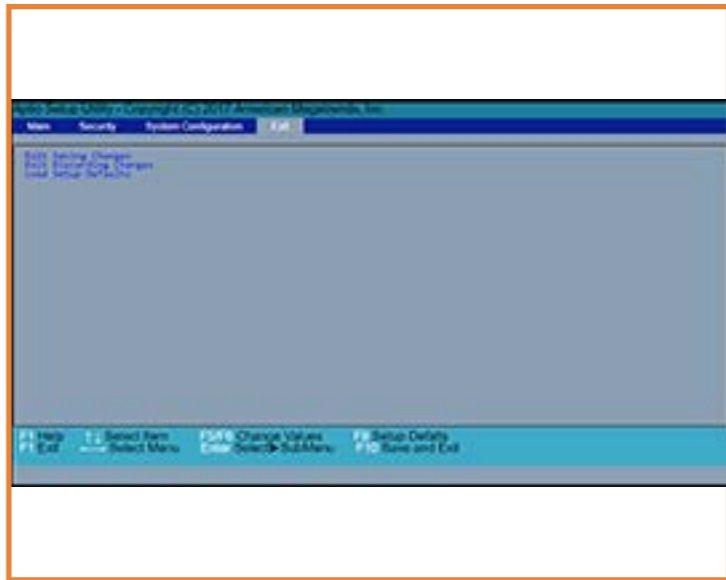
Main



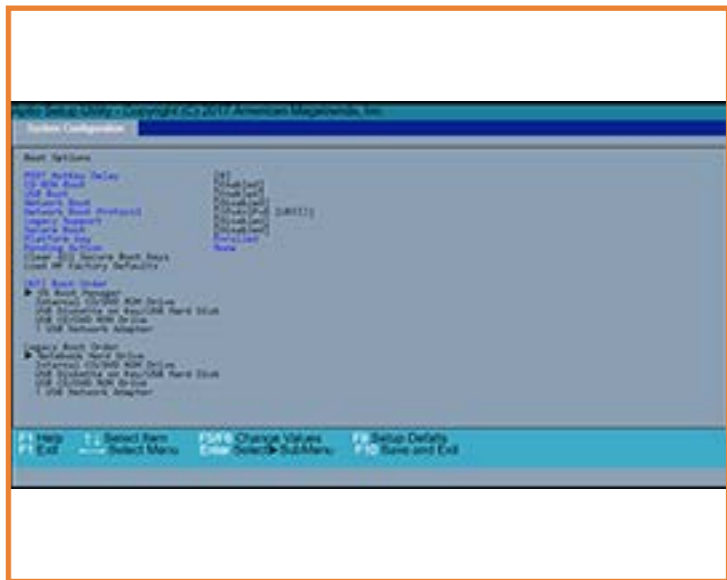
Security



System Configuration



Exit



Boot Options

Main Menu

Back to BIOS Utility Menus

The screenshot shows the BIOS Setup Utility interface. At the top, it says "BIOS Setup Utility" and "Rev. 5.0". Below this is a navigation bar with "Main", "Security", "System Configuration", and "Exit". The main area displays system information in a list format. On the right, there is a section for "Item Specific Help". At the bottom, a footer contains keyboard shortcuts for navigation and saving.

BIOS Setup Utility		Rev. 5.0	
Main	Security	System Configuration	Exit
System Time	[02:55:20]	Item Specific Help	
System Date	[01/01/2018]		
Product Name	HP Stream Laptop 11-ak1xxx		
Product Family	HP Stream		
Product Number	5XL20AS#ABU		
System Board ID	85B6		
Born On Date	03/25/2019		
Processor Type	Intel(R) Atom(R) x5-E8000 CPU @ 1.04GHz		
Total memory	2 GB		
BIOS Vendor	Insyde		
BIOS Version	F.02		
Serial Number	5CD85055BG		
UUID Number	38444335-3035-4247-473530354435		
System Board CT Number	PHVAK018JBK02Q		
Factory installed OS	Win 10		
Primary Battery SN	03753 11/09/2018		
▶ System Log			
Build ID	18WW2COX601#SABU#DABU		
Feature Byte	3K69 6b7B 7K7M 7WaB apaq asaw bCbh cbd8 dTdU dYdq fPfR hY .TF		
F1 Help	↑ ↓ Select Item	F5/F6 Change Values	F9 Setup Defaults
F1 Exit	← → Select Menu	Enter Select ▶ SubMenu	F10 Save and Exit

Back to Welcome Page

Security Menu

Back to BIOS Utility Menus

BIOS Setup Utility Rev. 5.0

Main Security System Configuration Exit

Adminstrator Password [Clear]
Power-On Password [Clear]
Intel Software Guard Extensions (SGX) [S/W Controlled]
TPM Device [Available]
TPM State [Enable]
Clear TPM [No]
Secure Erase
Restore Security settings to Factory defaults

Item Specific Help

F1 Help ↑↓ Select Item F5/F6 Change Values F9 Setup Defaults
F1 Exit ←→ Select Menu Enter Select SubMenu F10 Save and Exit

Back to Welcome Page

System Configuration Menu

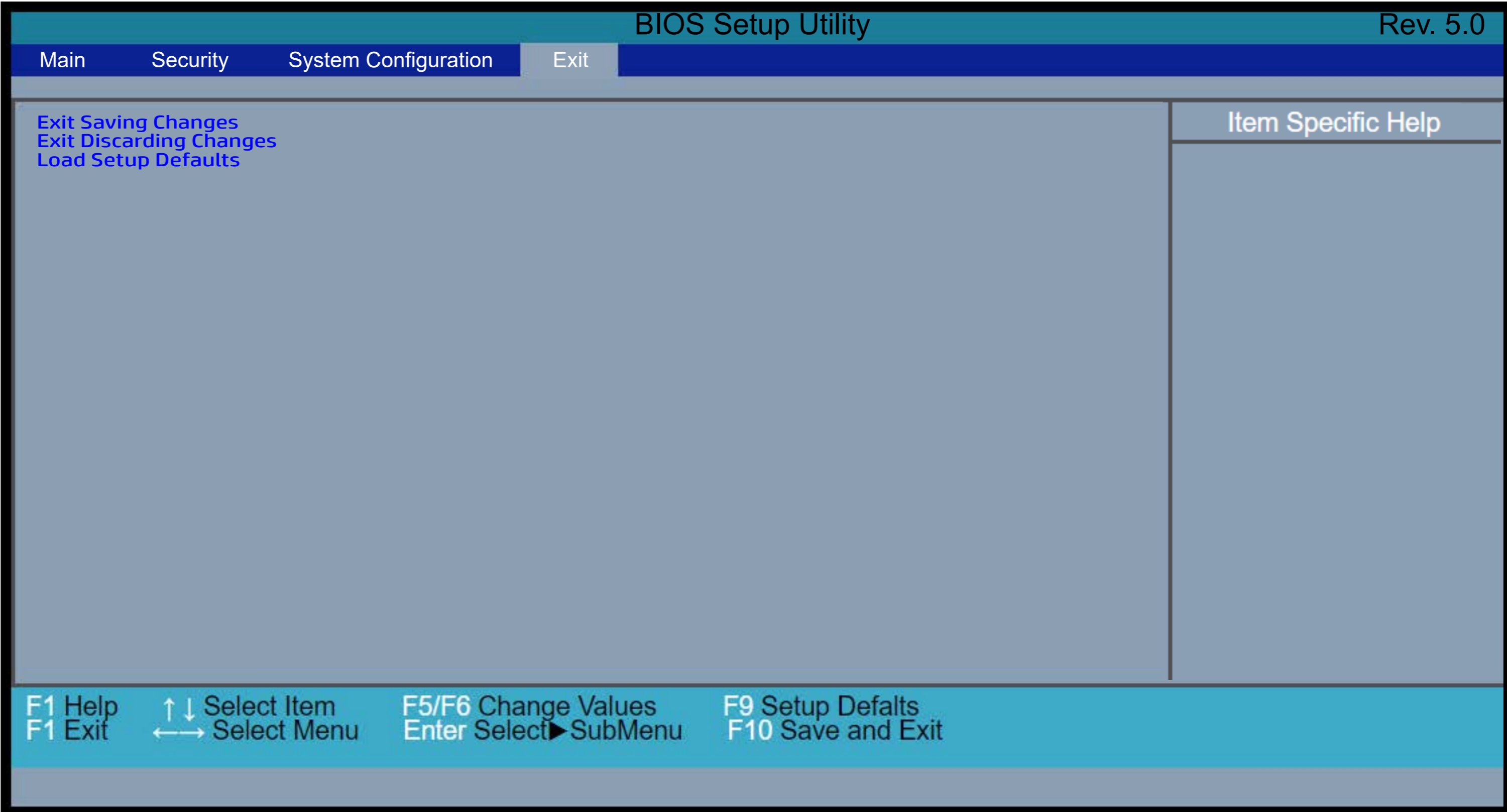
Back to BIOS Utility Menus

The screenshot shows the BIOS Setup Utility interface. At the top, the title bar reads "BIOS Setup Utility" on the left and "Rev. 5.0" on the right. Below this is a navigation bar with four tabs: "Main", "Security", "System Configuration" (which is currently selected), and "Exit". The main area is divided into two sections. The left section lists several configuration items: "Language" with a value of "[English]", "Virtualization Technology" with "[Disabled]", "Action Keys Mode" with "[Enabled]", and "Battery Remaining Time" with "[Disabled]". Below these is a blue arrow pointing to "Boot Options". The right section is titled "Item Specific Help" and is currently empty. At the bottom of the screen, a light blue bar contains keyboard shortcuts: "F1 Help" and "F1 Exit" on the left; "↑ ↓ Select Item" and "← → Select Menu" in the middle; "F5/F6 Change Values" and "Enter Select SubMenu" on the right; and "F9 Setup Defaults" and "F10 Save and Exit" on the far right.

Back to Welcome Page

Exit Menu

Back to BIOS Utility Menus



Back to Welcome Page

Boot Options Menu

Back to BIOS Utility Menus

BIOS Setup Utility Rev. 5.0

System Configuration

Boot Options

POST HotKey Delay [0]
USB Boot [Enabled]
Network Boot [Disabled]
Network Boot Protocol [IPv4+IPv6 (UEFI)]
Legacy Support [Disabled]
Secure Boot [Enabled]
Platform key Not Enrolled
Pending Action None
Clear All Secure Boot Keys
Load HP Factory Defaults

UEFI Boot Order
▶ OS Boot Manager
USB Diskette on Key/USB Hard Disk
USB CD/DVD ROM Drive
! USB Network Adapter

Legacy Boot Order
▶ Notebook Hard Drive
USB Diskette on Key/USB Hard Disk
USB CD/DVD ROM Drive
! USB Network Adapter

Item Specific Help

F1 Help ↑ ↓ Select Item F5/F6 Change Values F9 Setup Defaults
F1 Exit ← → Select Menu Enter Select SubMenu F10 Save and Exit

Back to Welcome Page