

# Interactive BIOS simulator

## OMEN by HP 17-ax0000 Laptop PC

Welcome to the interactive BIOS simulator for the  
OMEN by HP 17-ax0000 Laptop PC

### Here's how to use it...

[BIOS Utility Menus](#): (Click the link to navigate to the individual menus)

On this page you will find thumbnail images of each of the product's BIOS utility menus. To view a specific menu in greater detail, simply click that thumbnail. Just as in the live BIOS, on each menu, you can select the tab of each of the other utility menus to navigate directly to that menu.

### Menu options:

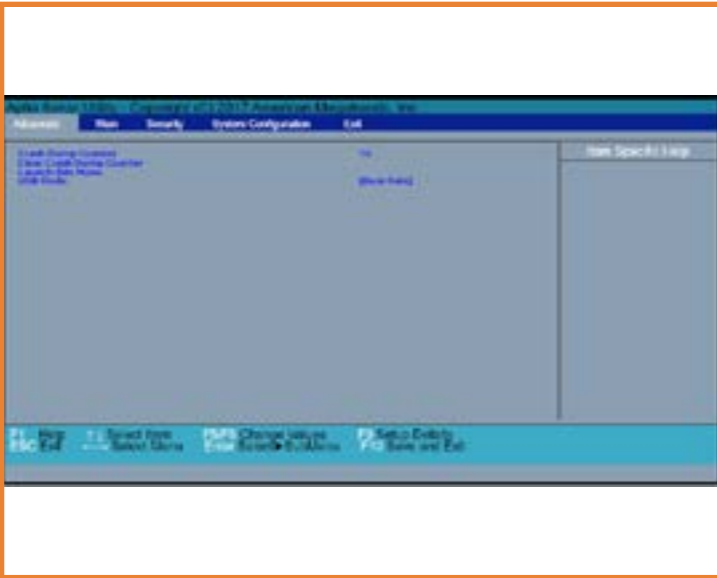
While the menu options cannot be toggled, many of them offer item specific information about that option. To view this information, use the cursor to rollover the option and the information will present in a pane on the right of the BIOS screen.

### That's it!

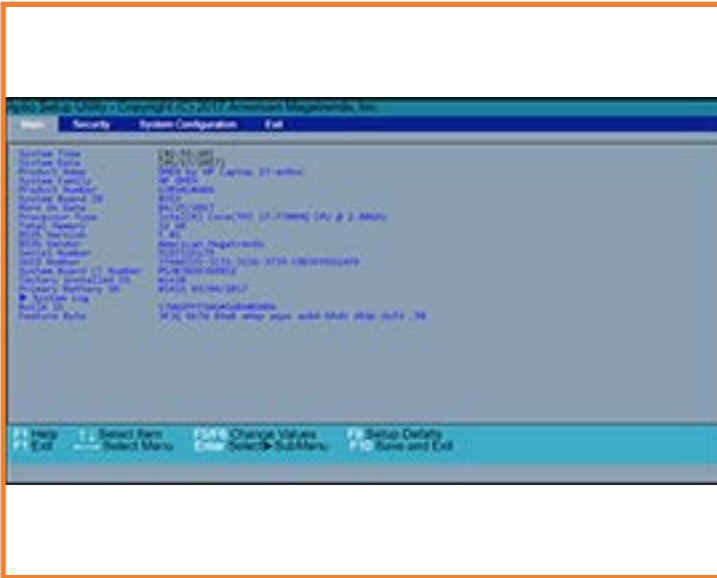
**On every page there is a link that brings you back to either this [Welcome](#) page or the [BIOS Utility Menus](#) page enabling you to navigate to whatever BIOS option you wish to review.**

# BIOS Utility Menus

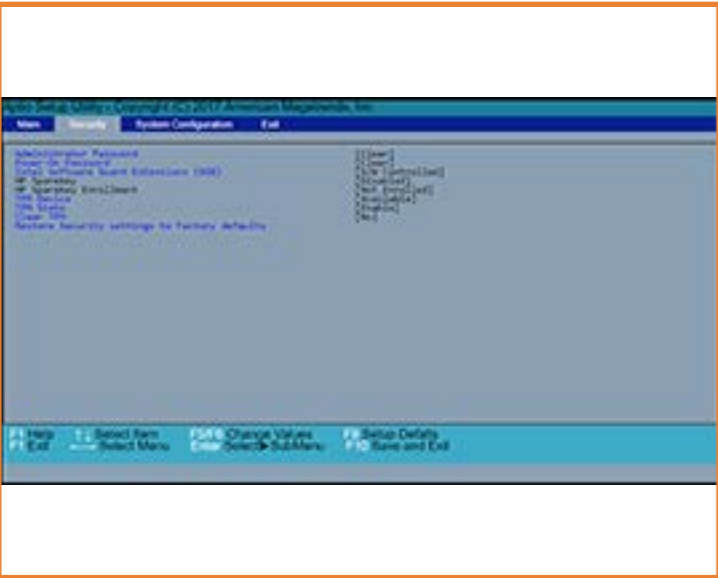
Back to Welcome Page



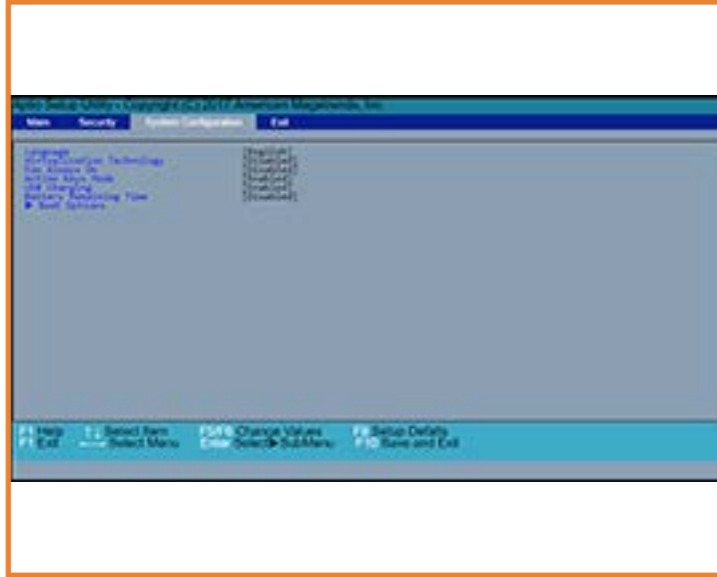
Advanced



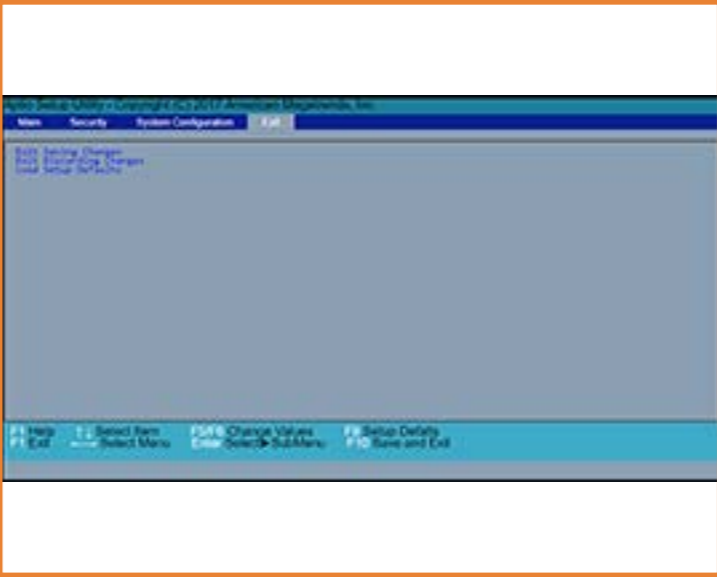
Main



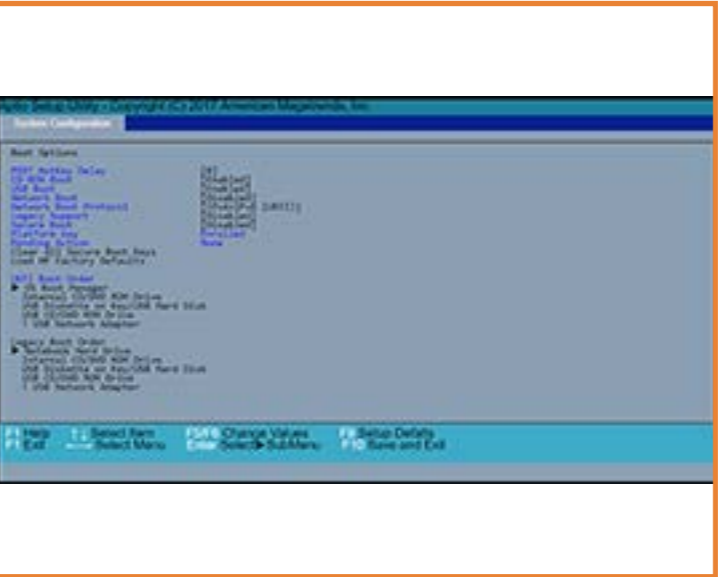
Security



System Configuration



Exit



Boot Options

# Advanced Menu

Back to BIOS Utility Menus

Aptio Setup Utility - Copyright (C) 2017 American Megatrends, Inc

Advanced Main Security System Configuration Exit

Crash Dump Counter	10	Item Specific Help
Clear Crash Dump Counter		
Launch Bds Menu		
USB Mode	[Dual Role]	

F1 Help    ↑↓ Select Item    F5/F6 Change Values    F9 Setup Defaults  
ESC Exit    ←→ Select Menu    Enter Select SubMenu    F10 Save and Exit

Back to Welcome Page

# Main Menu

Back to BIOS Utility Menus

Aptio Setup Utility - Copyright (C) 2017 American Megatrends, Inc

Advanced Main Security System Configuration Exit

System Time	[02:55:20]	Item Specific Help
System Date	[11/21/2017]	
Product Name	HP ENVY X2	
System Family	HP ENVY	
Product Number	D98SKU1#ABA	
System Board ID	836D	
Born On Date	00/00/0000	
Processor Type	Snapdragon(TM) 835	
Total memory	8 GB	
BIOS Version	B.29	
BIOS Vendor	Qualcomm Technologies Inc., American Megatrends Inc.	
Serial Number	5CD73781FB	
UUID Number	37444335-3733-3138-4642-423137334435	
System Board CT Number	PD98KAF8J9301I	
Factory installed OS	Win 10	
Primary Battery SN	31365 08/11/2017	
▶ System Log		
Build ID	18WW1XXT6AL#SABA#DABA	
Feature Byte	3K3Q 6b7K 7M7Q 7WaB apaq arau awbh bpbzmcdbU dpdqm.BR	

F1 Help    ↑↓ Select Item    F5/F6 Change Values    F9 Setup Defaults  
ESC Exit    ←→ Select Menu    Enter Select▶ SubMenu    F10 Save and Exit

Back to Welcome Page

# Security Menu

Back to BIOS Utility Menus

Aptio Setup Utility - Copyright (C) 2017 American Megatrends, Inc

Advanced Main Security System Configuration Exit

Adminstrator Password	[Clear]	Item Specific Help
Power-On Password	[Clear]	
Secure Erase		
Clear TPM	[No]	
Restore Security settings to Factory defaults		

F1 Help    ↑↓ Select Item    F5/F6 Change Values    F9 Setup Defaults  
ESC Exit   ←→ Select Menu    Enter Select SubMenu    F10 Save and Exit

Back to Welcome Page

# System Configuration Menu

Back to BIOS Utility Menus

The screenshot shows the 'System Configuration' menu in the Aptio Setup Utility. The title bar reads 'Aptio Setup Utility - Copyright (C) 2017 American Megatrends, Inc'. The navigation bar includes 'Advanced', 'Main', 'Security', 'System Configuration', and 'Exit'. The main area lists several settings: 'Language' (English), 'Action Keys Mode' (Enabled), 'Battery Remaining Time' (Disabled), and 'Content Adaptive Backlight Control' (Disabled). A blue arrow points to 'Boot Options'. A right-hand pane is titled 'Item Specific Help'. The bottom status bar provides keyboard shortcuts: F1 Help, ESC Exit, arrow keys for menu navigation, F5/F6 for changing values, Enter for sub-menus, F9 for defaults, and F10 for saving and exiting.

Aptio Setup Utility - Copyright (C) 2017 American Megatrends, Inc				
Advanced	Main	Security	System Configuration	Exit
Language	[English]			Item Specific Help
Action Keys Mode	[Enabled]			
Battery Remaining Time	[Disabled]			
Content Adaptive Backlight Control	[Disabled]			
▶ Boot Options				
F1 Help	↑↓ Select Item	F5/F6 Change Values	F9 Setup Defaults	
ESC Exit	←→ Select Menu	Enter Select SubMenu	F10 Save and Exit	

Back to Welcome Page

# Exit Menu

Back to BIOS Utility Menus

Aptio Setup Utility - Copyright (C) 2017 American Megatrends, Inc

Advanced Main Security System Configuration Exit

Exit Saving Changes  
Exit Discarding Changes  
Load Setup Defaults

Item Specific Help

F1 Help    ↑↓ Select Item    F5/F6 Change Values    F9 Setup Defaults  
ESC Exit   ←→ Select Menu    Enter Select SubMenu    F10 Save and Exit

Back to Welcome Page

# Boot Options Menu

Back to BIOS Utility Menus

Aptio Setup Utility - Copyright (C) 2017 American Megatrends, Inc

System Configuration

Boot Options

POST HotKey Delay	[0]
USB Boot	[Enabled]
Secure Boot	[Disabled]
Platform key	Enrolled
Pending Action	None

Clear All Secure Boot Keys  
Load HP Factory Defaults  
Load MSFT Debug Policy keys

UEFI Boot Order

- USB Diskette on Key/USB Hard Disk
- ▶ OS Boot Manager
- USB CD/DVD ROM Drive

Item Specific Help

F1 Help    ↑ ↓ Select Item    F5/F6 Change Values    F9 Setup Defaults  
F1 Exit    ← → Select Menu    Enter Select SubMenu    F10 Save and Exit

Back to Welcome Page