

Interactive Part Locator

HP 22-b400 All-in-One Desktop PC series

Welcome to thi interactive part locator

Here's how to use it...

[External Views](#) (Click the link to navigate to the views)

On this page you will find large icons of each of the external views of this product. To view a specific view in greater detail, simply click that view.

[Parts List](#) (Click the link to navigate to the parts)

On this page, you will find a list of all of the replaceable parts for this product. To view a specific part and its location in the product, click the part name in the list.

That's it! On every page there is a link that brings you back to either the External Views or the Parts List, enabling you to navigate to whatever view or part you wish to review.

External Views

[Back to Welcome page](#)



Front



Left



Right



Rear



Display



Internal

[Go to Parts List](#)

Front View

[Back to External Views](#)



[Go to Parts List](#)

Left View

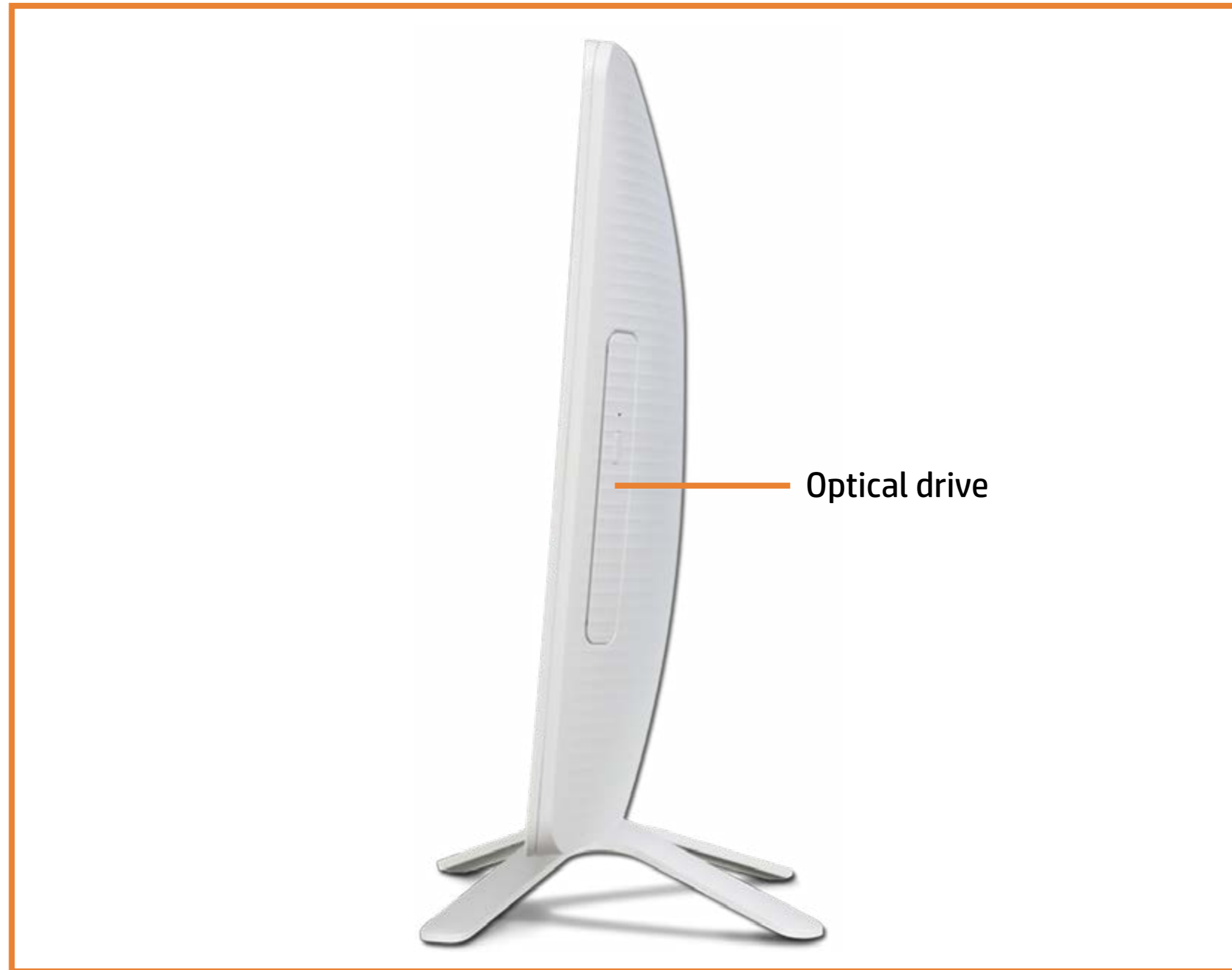
[Back to External Views](#)



[Go to Parts List](#)

Right View

[Back to External Views](#)



[Go to Parts List](#)

Rear View

[Back to External Views](#)



Optical drive

USB 2.0 ports

Ethernet port

DC power input

Security lock

DC power LED

Headphone/Microphone port

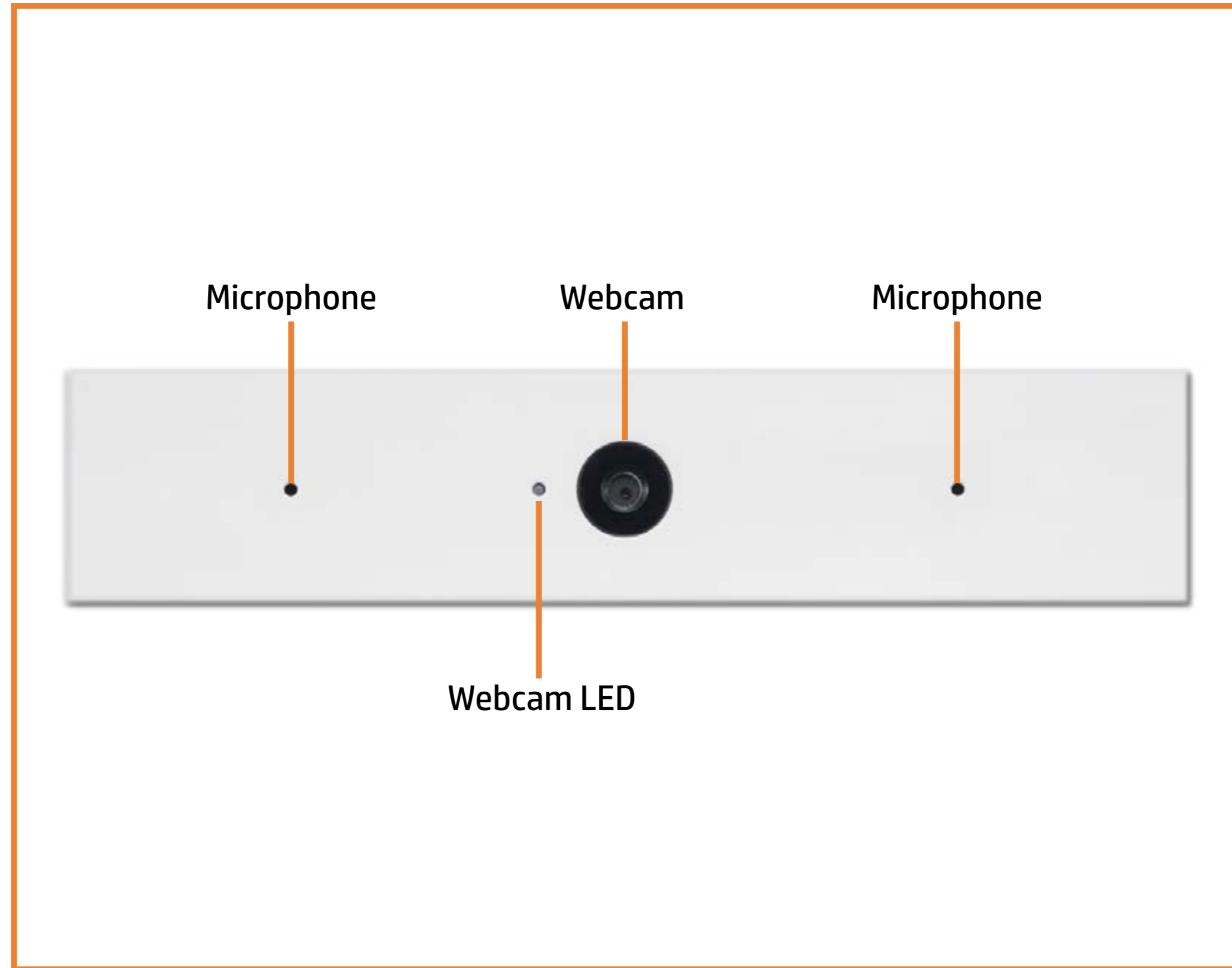
HDMI out

USB 3.1 ports

[Go to Parts List](#)

Display View

[Back to External Views](#)

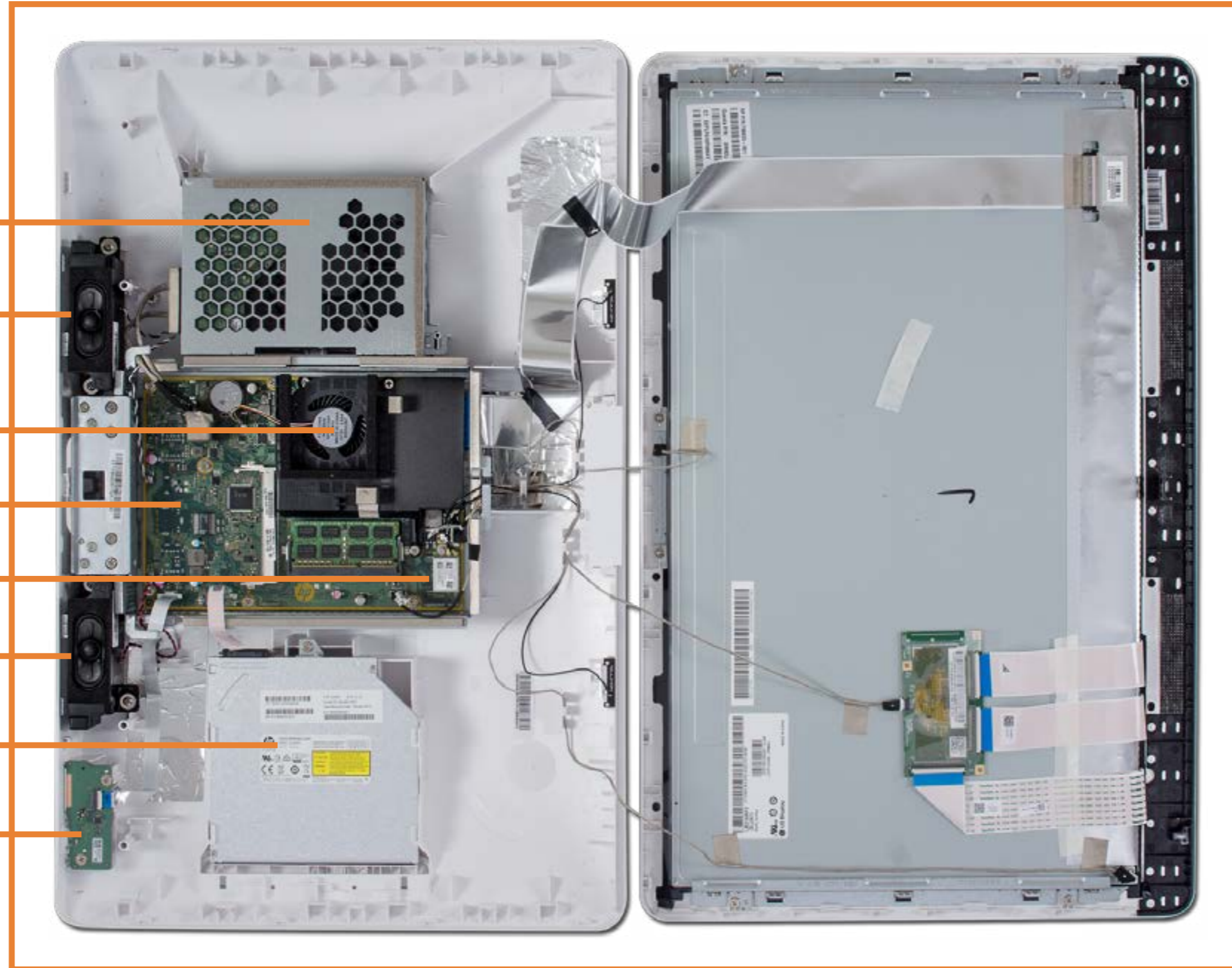


[Go to Parts List](#)

Internal View

[Back to External Views](#)

- Hard Drive
- Speaker
- Fan
- Motherboard
- Wireless LAN Board
- Speaker
- Optical Drive
- Card Reader/Power Board



[Go to Parts List](#)

Stand

Stand

Rear Cover

Optical Drive

Hard Drive

System Memory

Wireless LAN Board

Fan

Heat Sink

Left Speaker

Right Speaker

Card Reader/Power Board

Wireless LAN Antennas

Battery

Motherboard (top)

Motherboard (bottom)

Stand Hinge

Motherboard Shielding

Webcam

LCD Panel Kit/Front Bezel

[Go to External Views](#)



Rear Cover

Stand

Rear Cover

Optical Drive

Hard Drive

System Memory

Wireless LAN Board

Fan

Heat Sink

Left Speaker

Right Speaker

Card Reader/Power Board

Wireless LAN Antennas

Battery

Motherboard (top)

Motherboard (bottom)

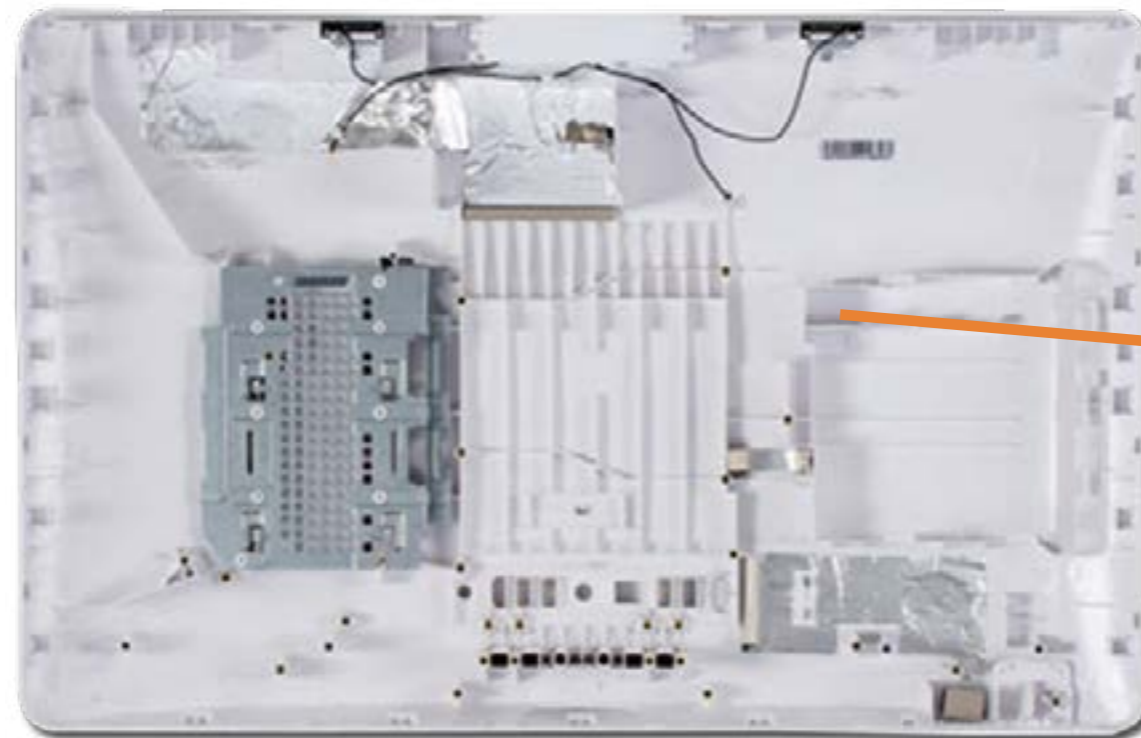
Stand Hinge

Motherboard Shielding

Webcam

LCD Panel Kit/Front Bezel

[Go to External Views](#)



Optical Drive

- Stand
- Rear Cover
- Optical Drive**
- Hard Drive
- System Memory
- Wireless LAN Board
- Fan
- Heat Sink
- Left Speaker
- Right Speaker
- Card Reader/Power Board
- Wireless LAN Antennas
- Battery
- Motherboard (top)
- Motherboard (bottom)
- Stand Hinge
- Motherboard Shielding
- Webcam
- LCD Panel Kit/Front Bezel



[Go to External Views](#)

Hard Drive

- Stand
- Rear Cover
- Optical Drive
- Hard Drive**
- System Memory
- Wireless LAN Board
- Fan
- Heat Sink
- Left Speaker
- Right Speaker
- Card Reader/Power Board
- Wireless LAN Antennas
- Battery
- Motherboard (top)
- Motherboard (bottom)
- Stand Hinge
- Motherboard Shielding
- Webcam
- LCD Panel Kit/Front Bezel



[Go to External Views](#)

System Memory

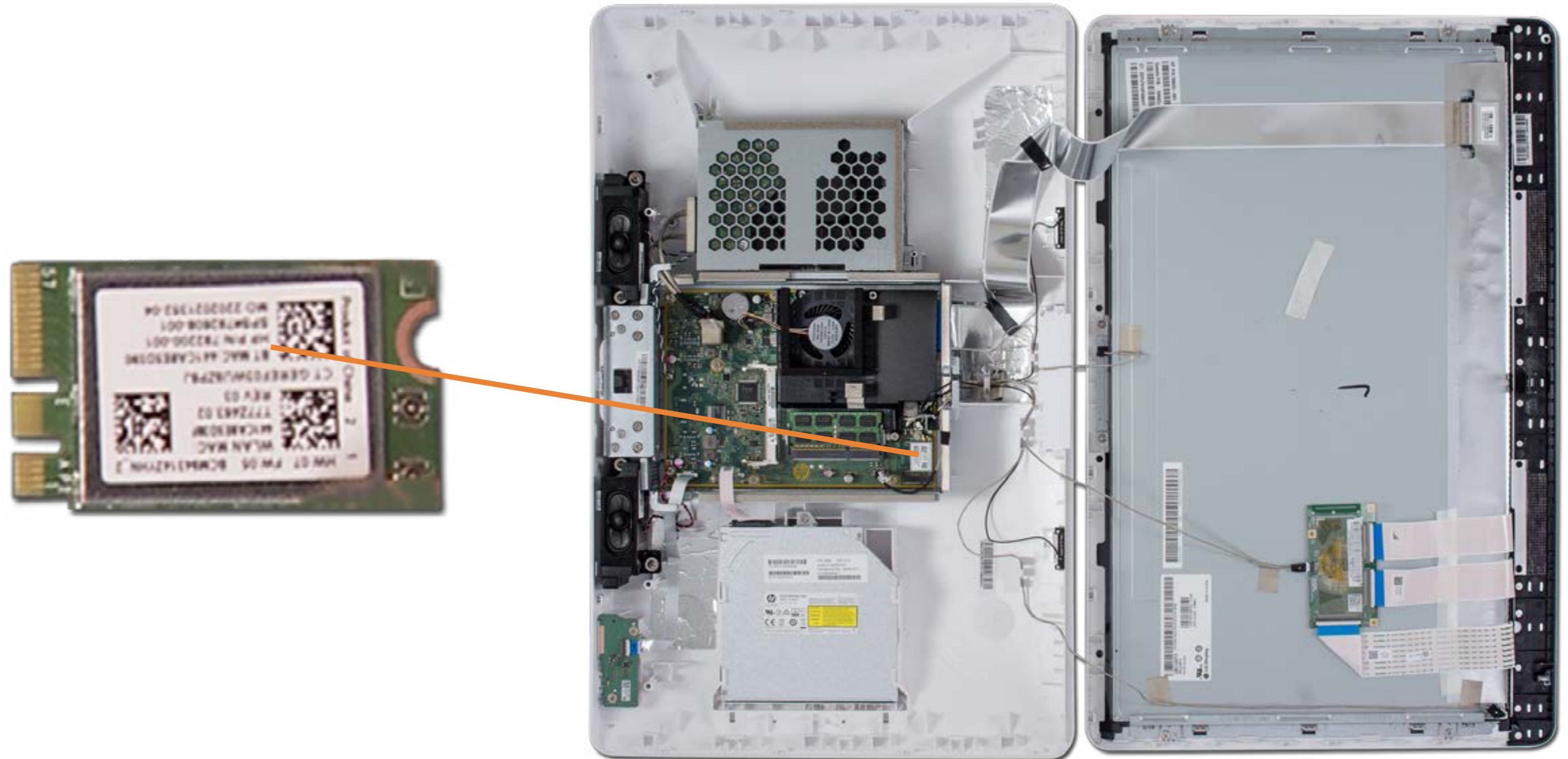
- Stand
- Rear Cover
- Optical Drive
- Hard Drive
- System Memory**
- Wireless LAN Board
- Fan
- Heat Sink
- Left Speaker
- Right Speaker
- Card Reader/Power Board
- Wireless LAN Antennas
- Battery
- Motherboard (top)
- Motherboard (bottom)
- Stand Hinge
- Motherboard Shielding
- Webcam
- LCD Panel Kit/Front Bezel



[Go to External Views](#)

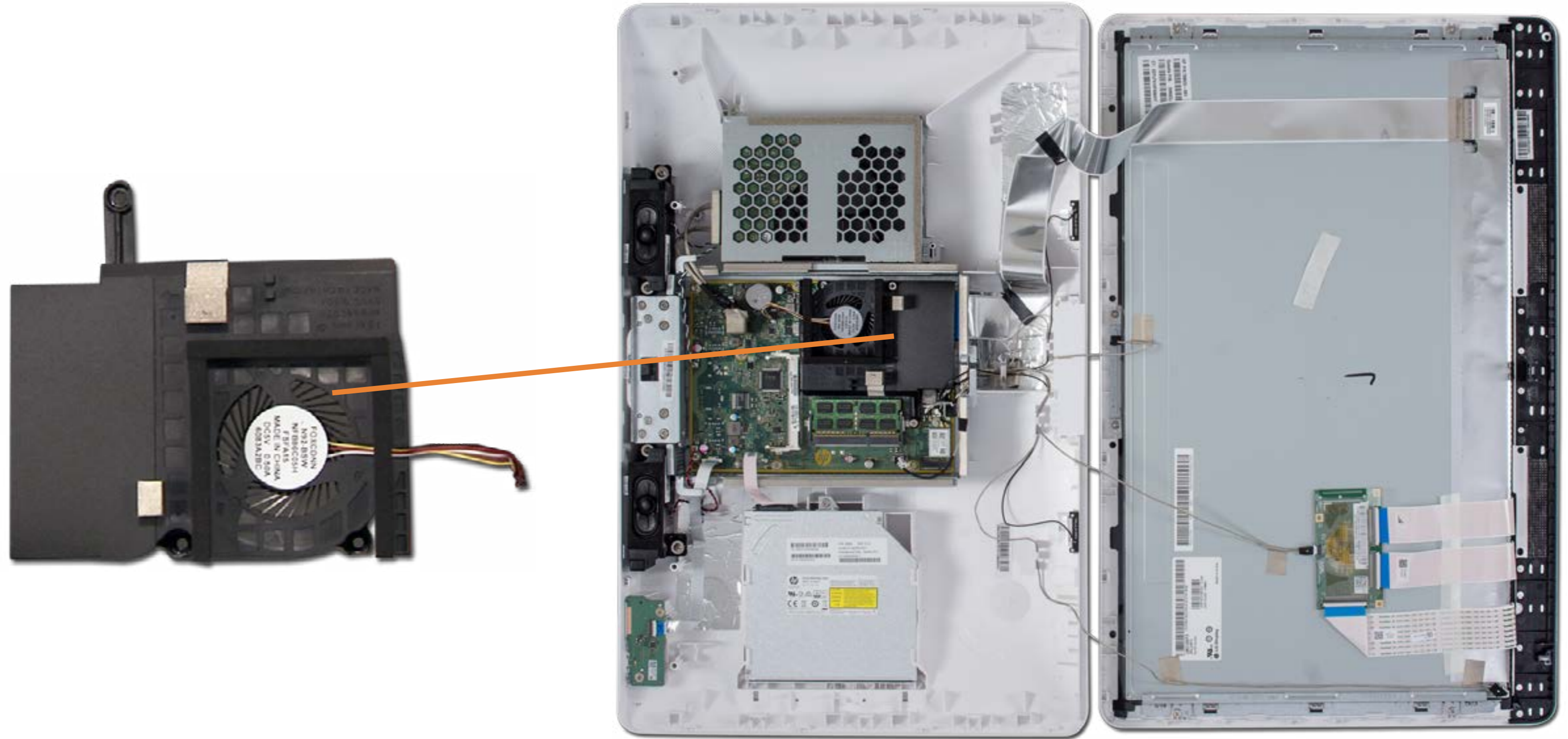
Wireless LAN Board

- Stand
- Rear Cover
- Optical Drive
- Hard Drive
- System Memory
- Wireless LAN Board**
- Fan
- Heat Sink
- Left Speaker
- Right Speaker
- Card Reader/Power Board
- Wireless LAN Antennas
- Battery
- Motherboard (top)
- Motherboard (bottom)
- Stand Hinge
- Motherboard Shielding
- Webcam
- LCD Panel Kit/Front Bezel
- Go to External Views



Fan

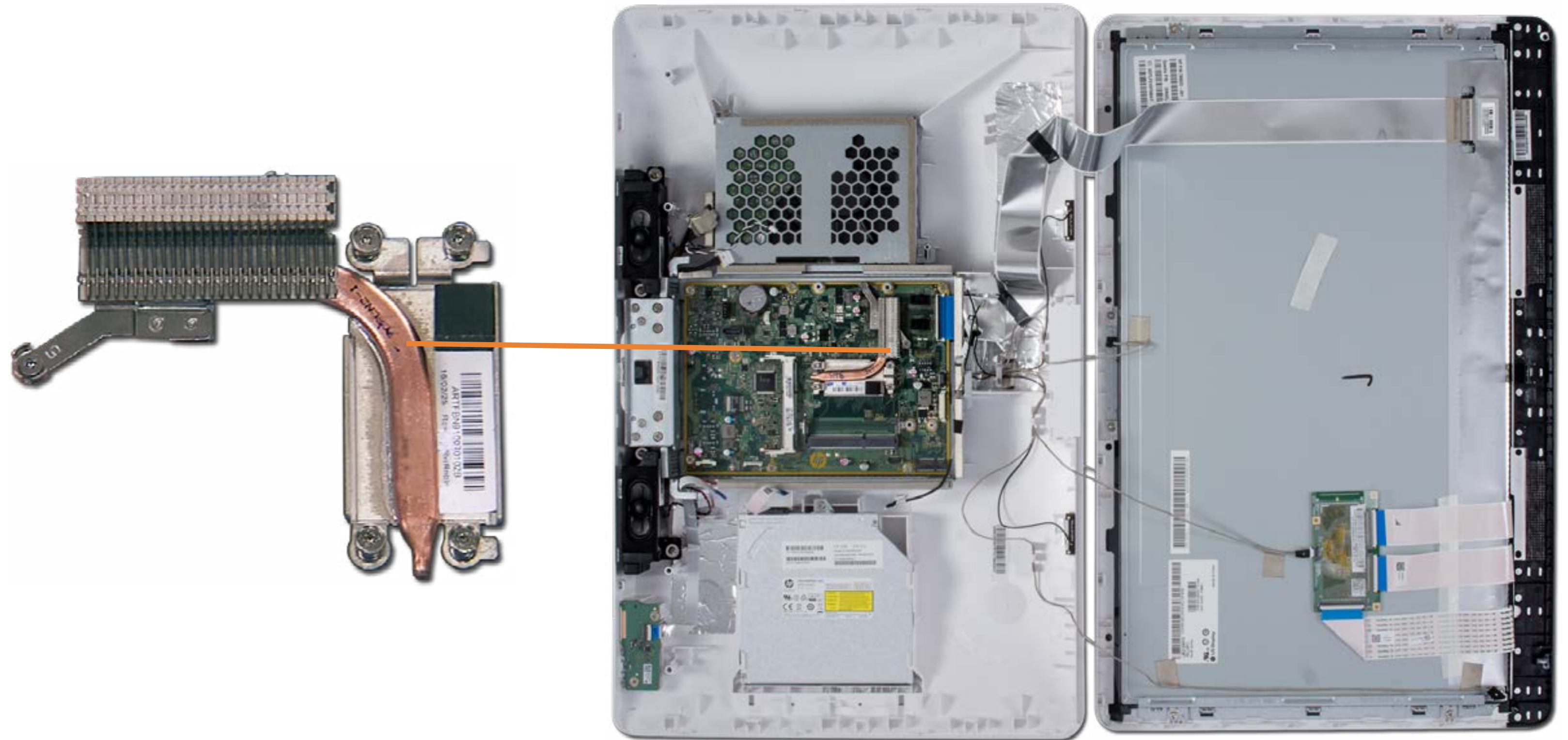
- Stand
- Rear Cover
- Optical Drive
- Hard Drive
- System Memory
- Wireless LAN Board
- Fan**
- Heat Sink
- Left Speaker
- Right Speaker
- Card Reader/Power Board
- Wireless LAN Antennas
- Battery
- Motherboard (top)
- Motherboard (bottom)
- Stand Hinge
- Motherboard Shielding
- Webcam
- LCD Panel Kit/Front Bezel



[Go to External Views](#)

Heat Sink

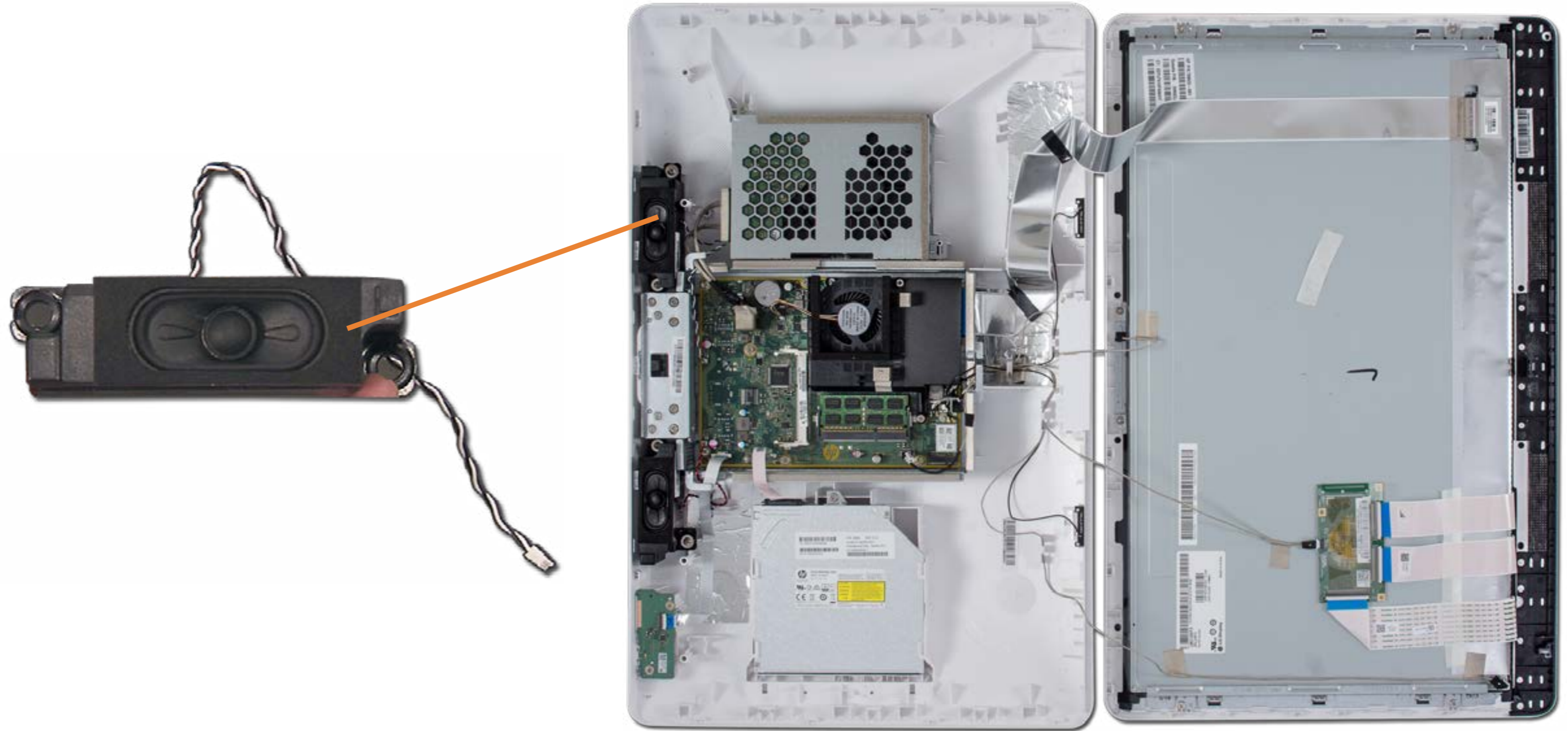
- Stand
- Rear Cover
- Optical Drive
- Hard Drive
- System Memory
- Wireless LAN Board
- Fan
- Heat Sink**
- Left Speaker
- Right Speaker
- Card Reader/Power Board
- Wireless LAN Antennas
- Battery
- Motherboard (top)
- Motherboard (bottom)
- Stand Hinge
- Motherboard Shielding
- Webcam
- LCD Panel Kit/Front Bezel



[Go to External Views](#)

Left Speaker

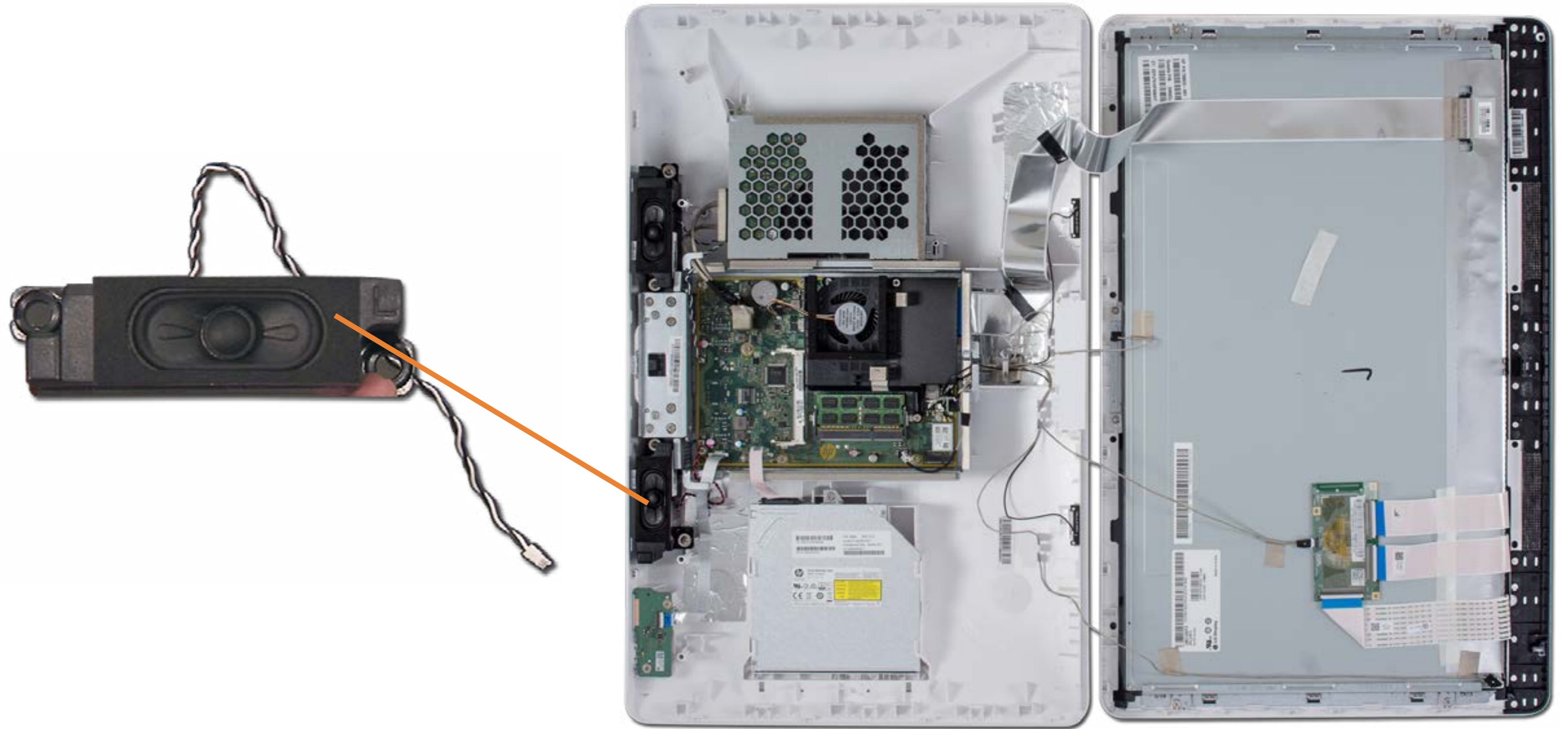
- Stand
- Rear Cover
- Optical Drive
- Hard Drive
- System Memory
- Wireless LAN Board
- Fan
- Heat Sink
- Left Speaker**
- Right Speaker
- Card Reader/Power Board
- Wireless LAN Antennas
- Battery
- Motherboard (top)
- Motherboard (bottom)
- Stand Hinge
- Motherboard Shielding
- Webcam
- LCD Panel Kit/Front Bezel



[Go to External Views](#)

Right Speaker

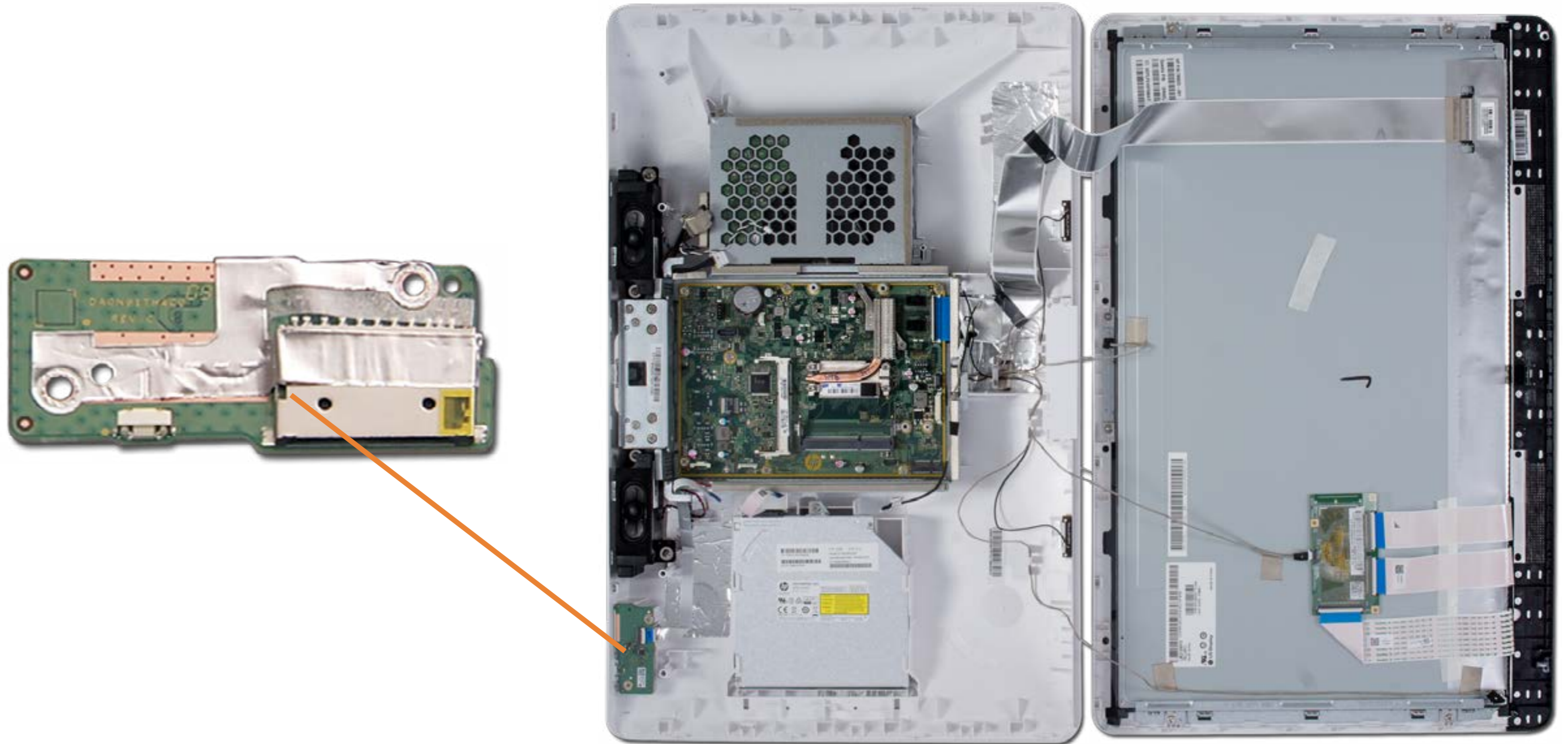
- Stand
- Rear Cover
- Optical Drive
- Hard Drive
- System Memory
- Wireless LAN Board
- Fan
- Heat Sink
- Left Speaker
- Right Speaker**
- Card Reader/Power Board
- Wireless LAN Antennas
- Battery
- Motherboard (top)
- Motherboard (bottom)
- Stand Hinge
- Motherboard Shielding
- Webcam
- LCD Panel Kit/Front Bezel



[Go to External Views](#)

Card Reader/Power Board

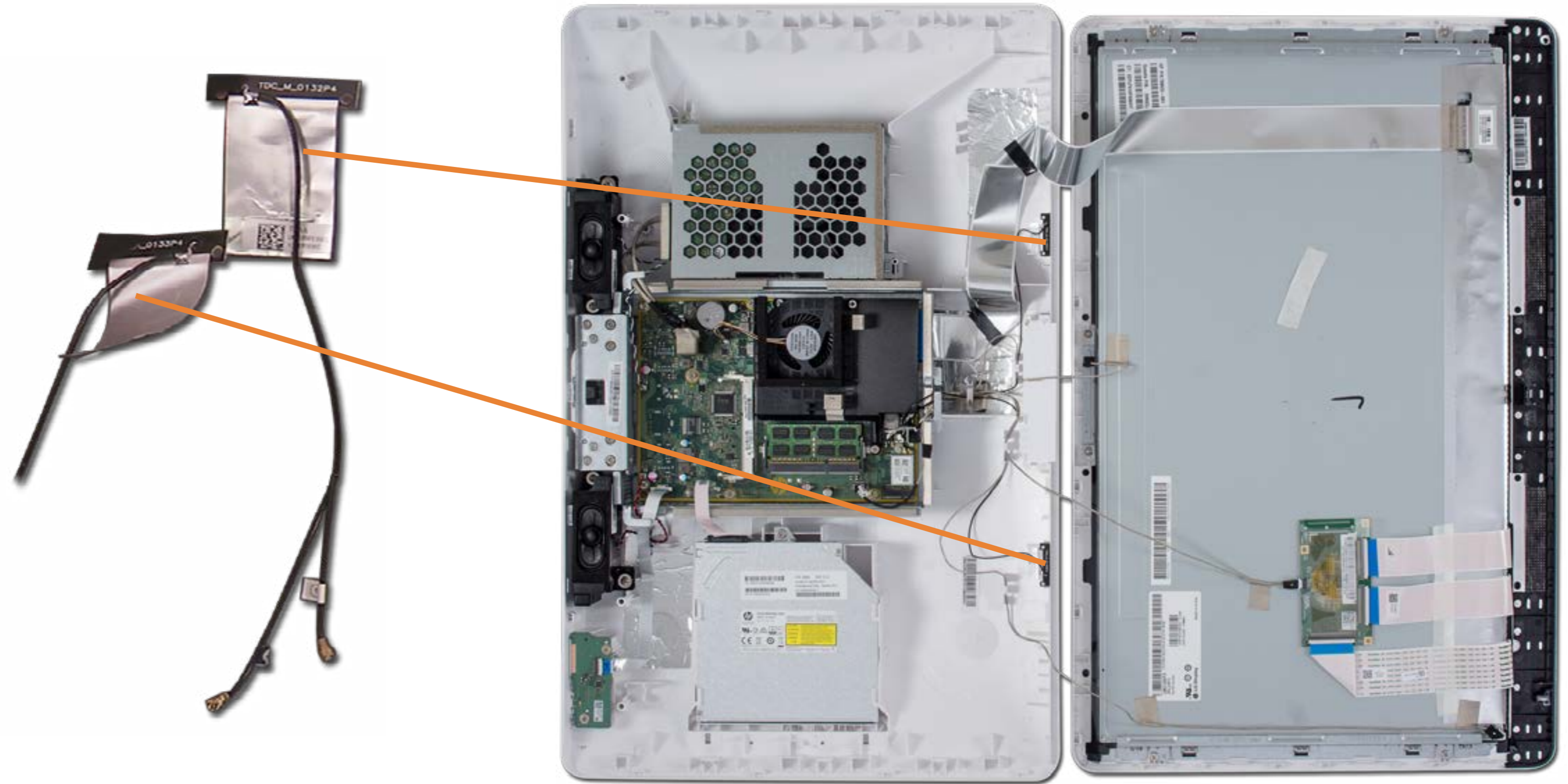
- Stand
- Rear Cover
- Optical Drive
- Hard Drive
- System Memory
- Wireless LAN Board
- Fan
- Heat Sink
- Left Speaker
- Right Speaker
- Card Reader/Power Board**
- Wireless LAN Antennas
- Battery
- Motherboard (top)
- Motherboard (bottom)
- Stand Hinge
- Motherboard Shielding
- Webcam
- LCD Panel Kit/Front Bezel



[Go to External Views](#)

Wireless LAN Antennas

- Stand
- Rear Cover
- Optical Drive
- Hard Drive
- System Memory
- Wireless LAN Board
- Fan
- Heat Sink
- Left Speaker
- Right Speaker
- Card Reader/Power Board
- Wireless LAN Antennas**
- Battery
- Motherboard (top)
- Motherboard (bottom)
- Stand Hinge
- Motherboard Shielding
- Webcam
- LCD Panel Kit/Front Bezel



[Go to External Views](#)

Battery

- Stand
- Rear Cover
- Optical Drive
- Hard Drive
- System Memory
- Wireless LAN Board
- Fan
- Heat Sink
- Left Speaker
- Right Speaker
- Card Reader/Power Board
- Wireless LAN Antennas
- Battery**
- Motherboard (top)
- Motherboard (bottom)
- Stand Hinge
- Motherboard Shielding
- Webcam
- LCD Panel Kit/Front Bezel

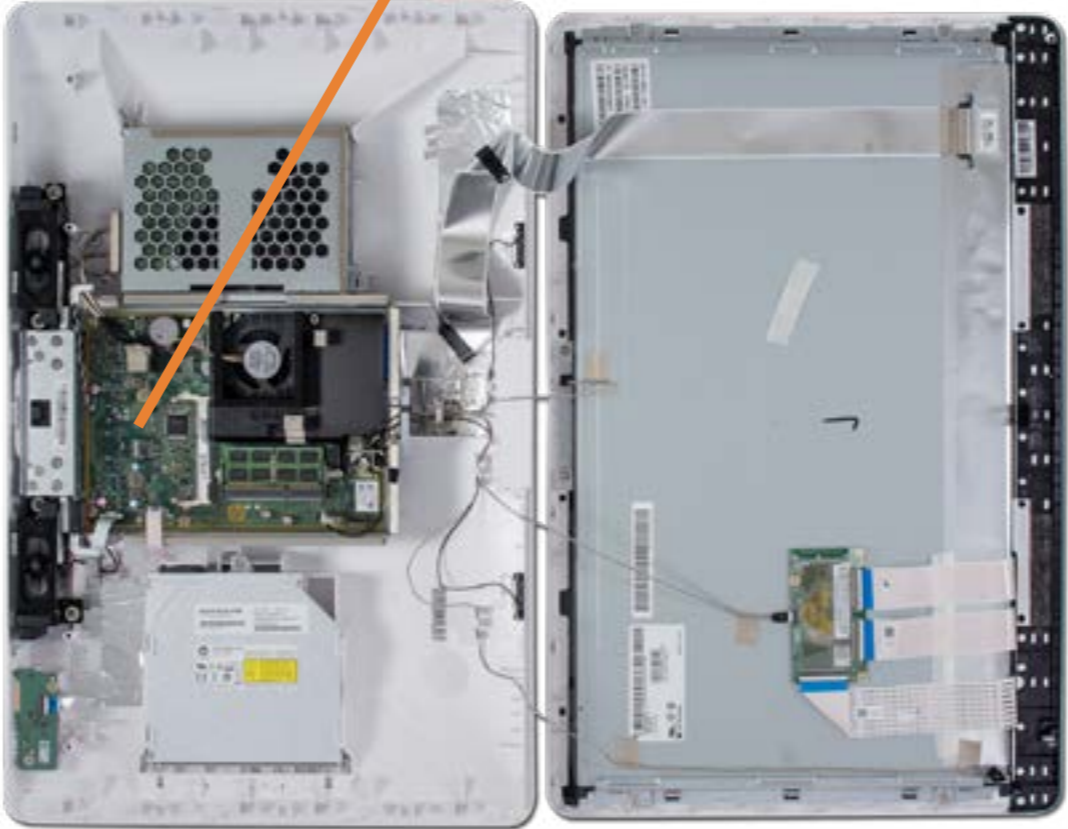
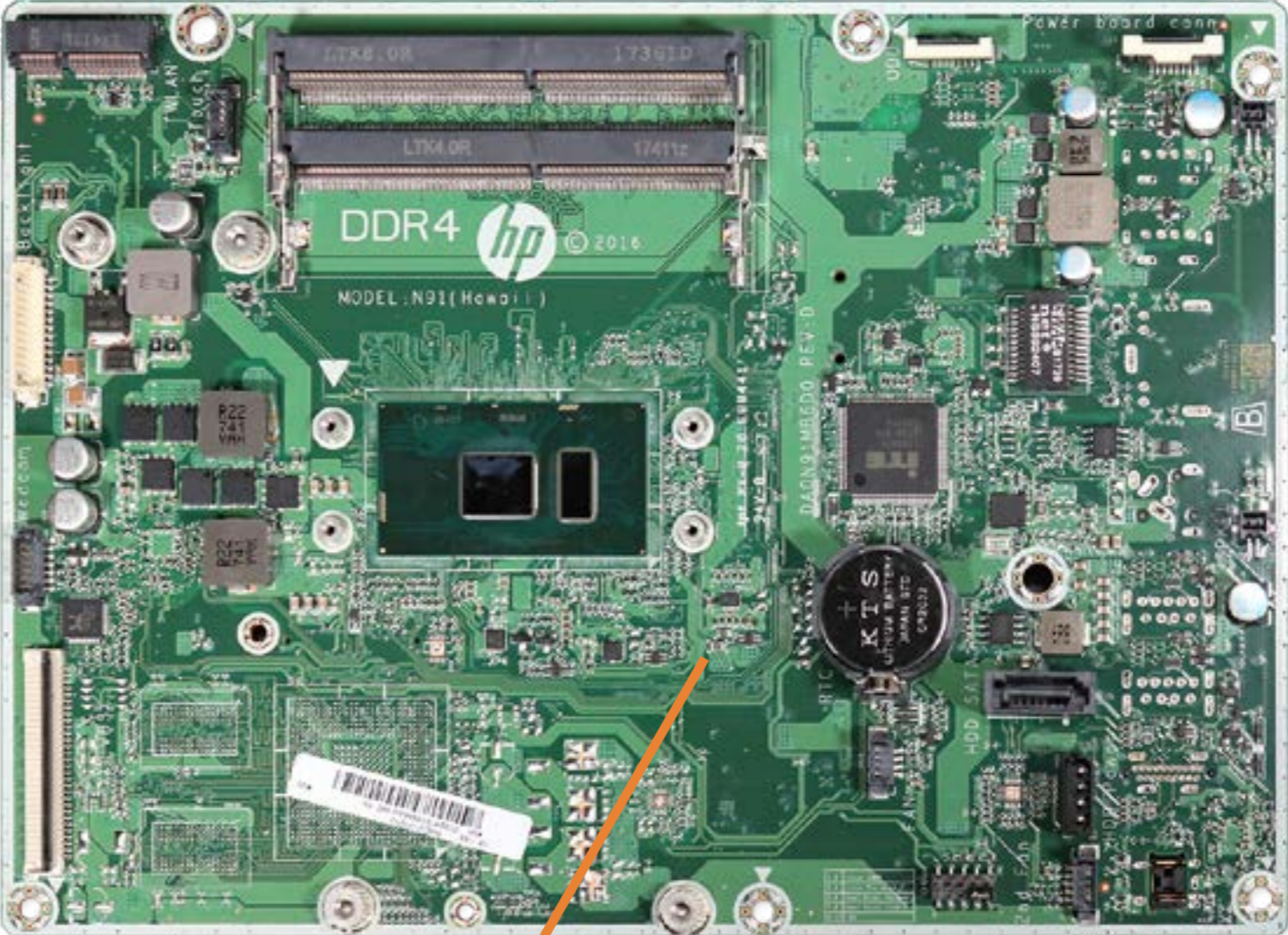


[Go to External Views](#)

Motherboard (top)

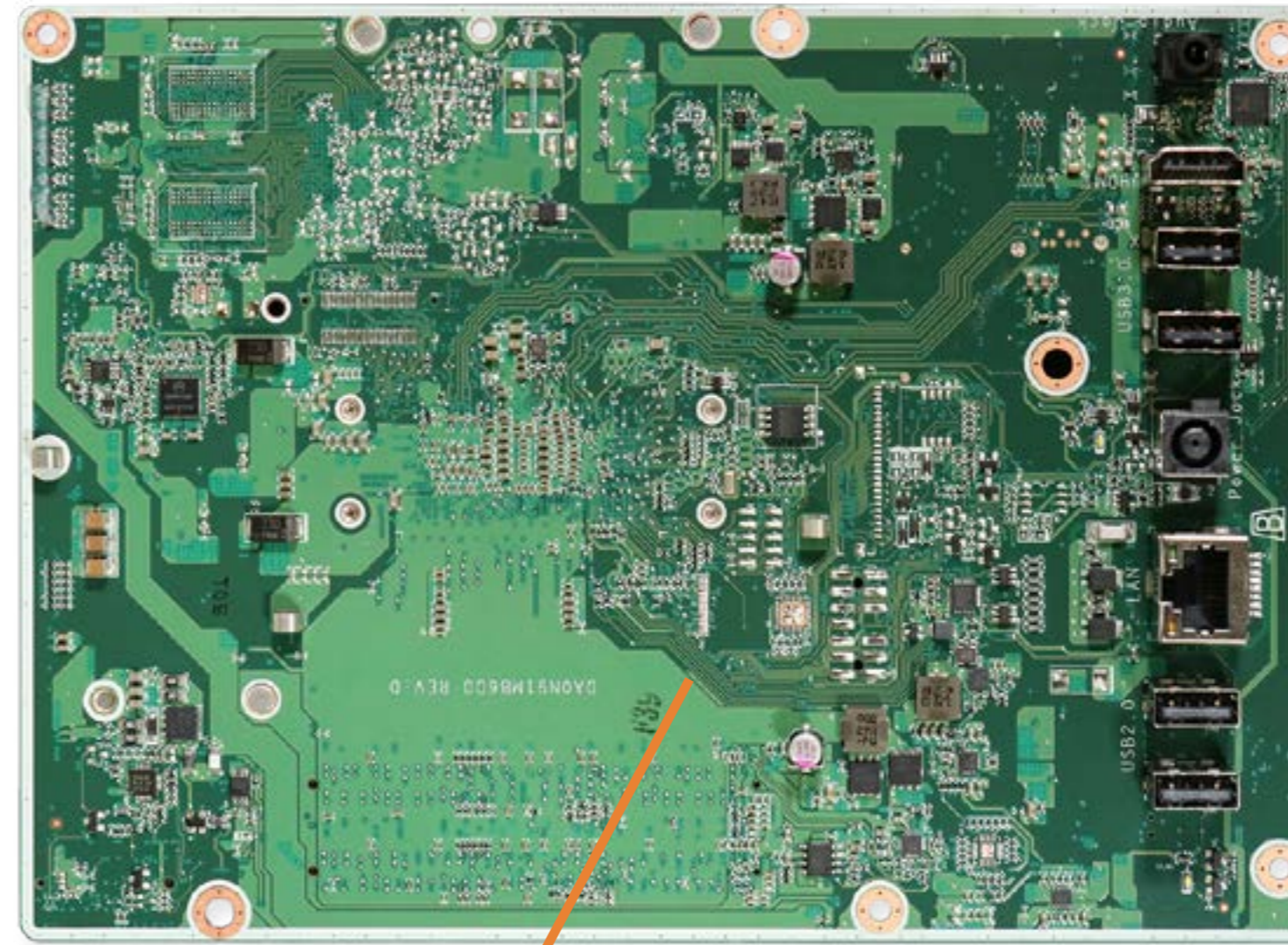
- Stand
- Rear Cover
- Optical Drive
- Hard Drive
- System Memory
- Wireless LAN Board
- Fan
- Heat Sink
- Left Speaker
- Right Speaker
- Card Reader/Power Board
- Wireless LAN Antennas
- Battery
- Motherboard (top)**
- Motherboard (bottom)
- Stand Hinge
- Motherboard Shielding
- Webcam
- LCD Panel Kit/Front Bezel

- Go to External Views



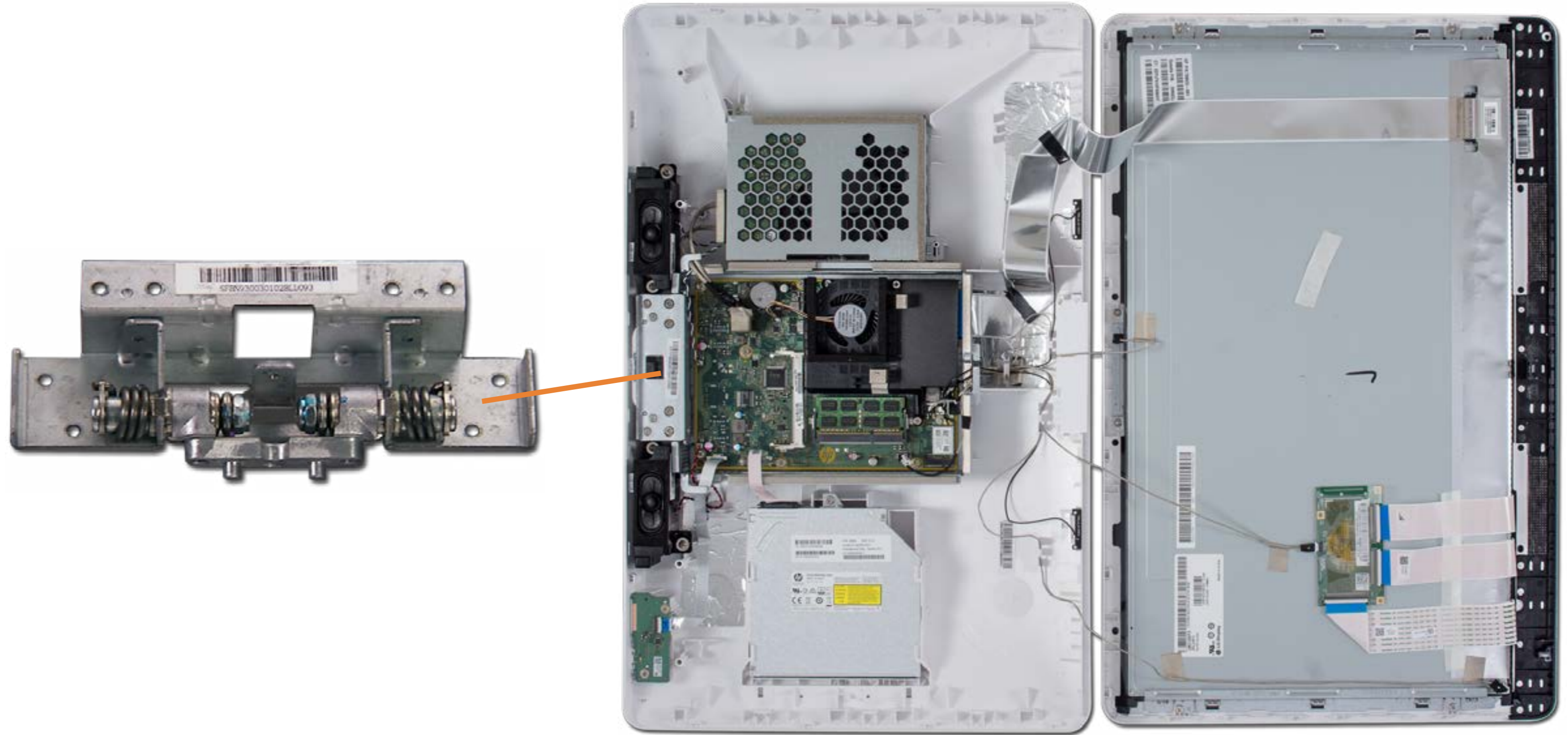
Motherboard (bottom)

- Stand
- Rear Cover
- Optical Drive
- Hard Drive
- System Memory
- Wireless LAN Board
- Fan
- Heat Sink
- Left Speaker
- Right Speaker
- Card Reader/Power Board
- Wireless LAN Antennas
- Battery
- Motherboard (top)
- Motherboard (bottom)**
- Stand Hinge
- Motherboard Shielding
- Webcam
- LCD Panel Kit/Front Bezel
- Go to External Views



Stand Hinge

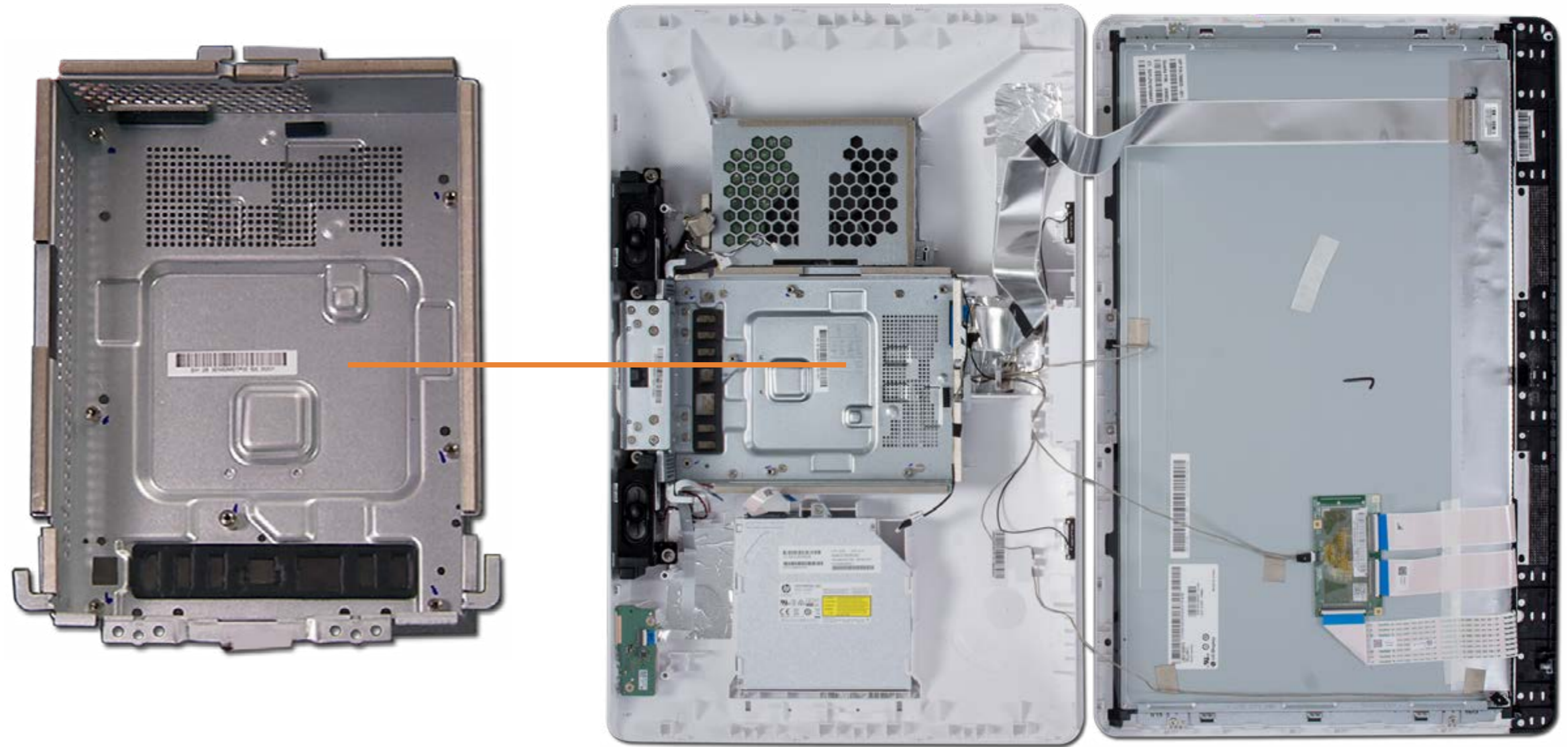
- Stand
- Rear Cover
- Optical Drive
- Hard Drive
- System Memory
- Wireless LAN Board
- Fan
- Heat Sink
- Left Speaker
- Right Speaker
- Card Reader/Power Board
- Wireless LAN Antennas
- Battery
- Motherboard (top)
- Motherboard (bottom)
- Stand Hinge**
- Motherboard Shielding
- Webcam
- LCD Panel Kit/Front Bezel



[Go to External Views](#)

Motherboard Shielding

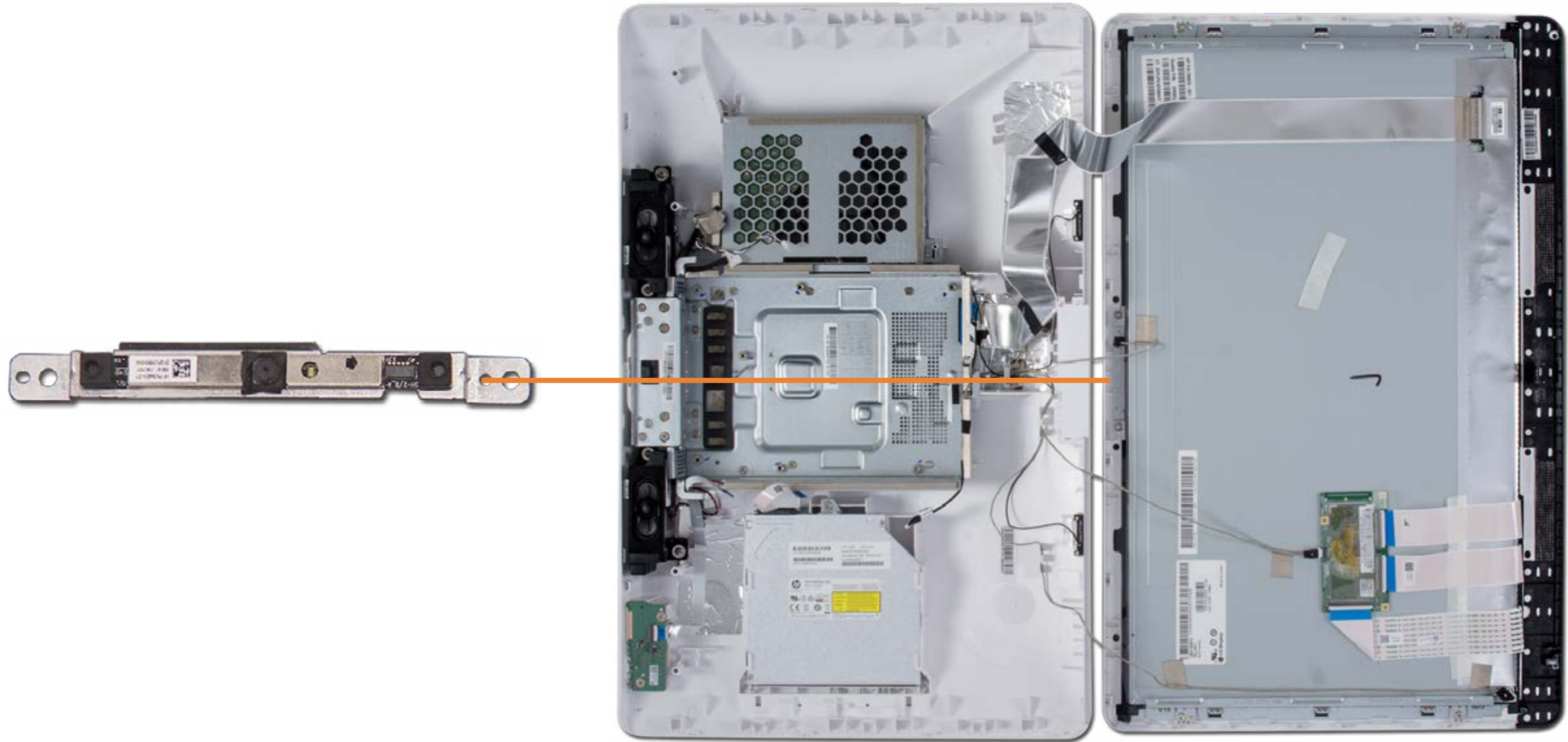
- Stand
- Rear Cover
- Optical Drive
- Hard Drive
- System Memory
- Wireless LAN Board
- Fan
- Heat Sink
- Left Speaker
- Right Speaker
- Card Reader/Power Board
- Wireless LAN Antennas
- Battery
- Motherboard (top)
- Motherboard (bottom)
- Stand Hinge
- Motherboard Shielding**
- Webcam
- LCD Panel Kit/Front Bezel



[Go to External Views](#)

Webcam

- Stand
- Rear Cover
- Optical Drive
- Hard Drive
- System Memory
- Wireless LAN Board
- Fan
- Heat Sink
- Left Speaker
- Right Speaker
- Card Reader/Power Board
- Wireless LAN Antennas
- Battery
- Motherboard (top)
- Motherboard (bottom)
- Stand Hinge
- Motherboard Shielding
- Webcam**
- LCD Panel Kit/Front Bezel



[Go to External Views](#)

LCD Panel Kit/Front Bezel

- Stand
- Rear Cover
- Optical Drive
- Hard Drive
- System Memory
- Wireless LAN Board
- Fan
- Heat Sink
- Left Speaker
- Right Speaker
- Card Reader/Power Board
- Wireless LAN Antennas
- Battery
- Motherboard (top)
- Motherboard (bottom)
- Stand Hinge
- Motherboard Shielding
- Webcam
- LCD Panel Kit/Front Bezel**



[Go to External Views](#)