

Interactive Part Locator

HP ENVY x360 15-ed0000 Convertible PC/HP ENVY x360 15-ee0000 Convertible PC

Welcome to this interactive part locator

Here's how to use it...

[External Views](#) (Click the link to navigate to the views)

On this page you will find large icons of each of the external views of this product. To view a specific view in greater detail, simply click that view.

[Parts List](#) (Click the link to navigate to the parts)

On this page, you will find a list of all of the replaceable parts for this product. To view a specific part and its location in the product, click the part name in the list.

That's it! On every page there is a link that brings you back to either the External Views or the Parts List, enabling you to navigate to whatever view or part you wish to review.

External Views

[Back to Welcome page](#)



Front



Left



Right



Rear



Display



Top



Bottom



Internal

[Go to Parts List](#)

Front View

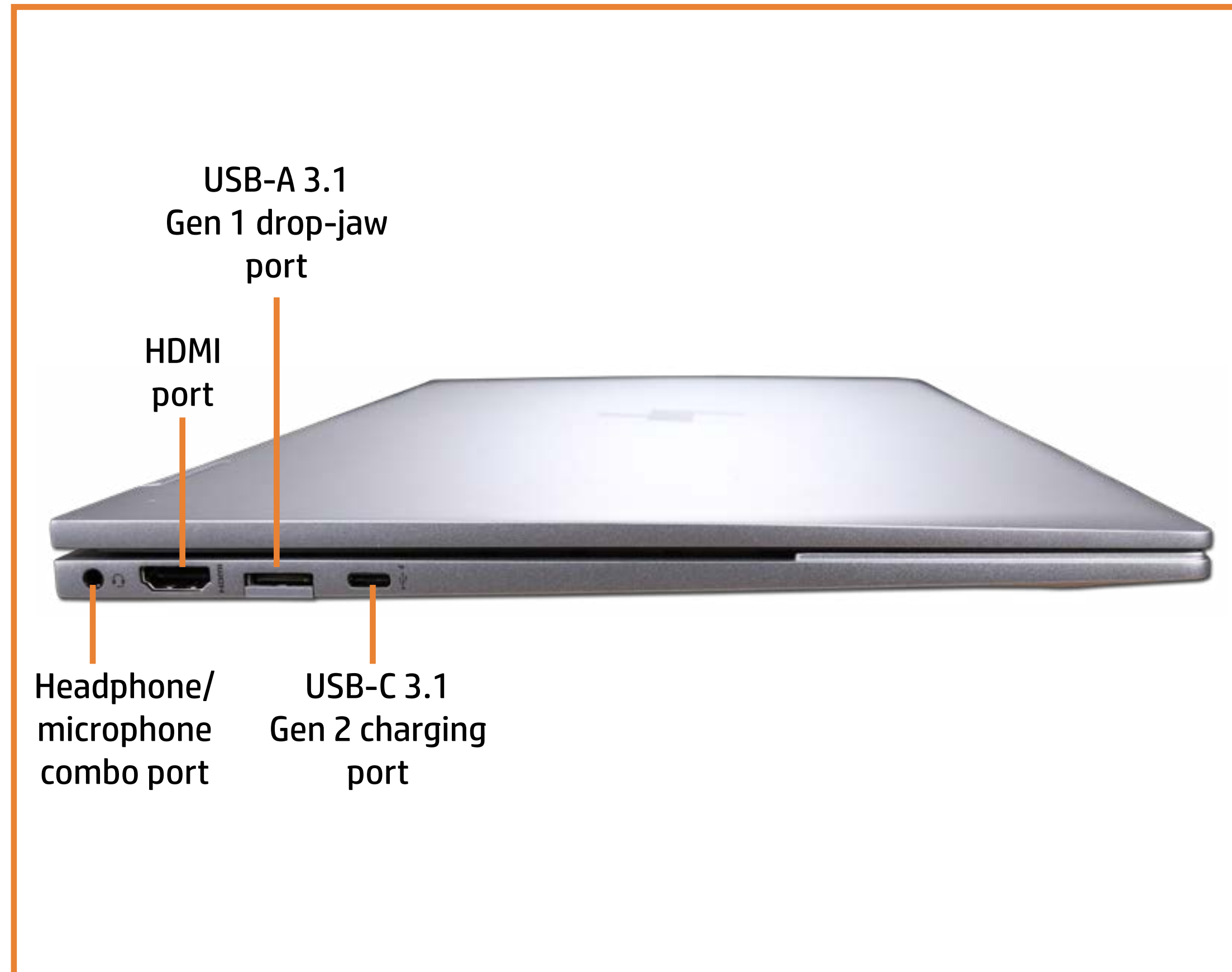
[Back to External Views](#)



[Go to Parts List](#)

Left View

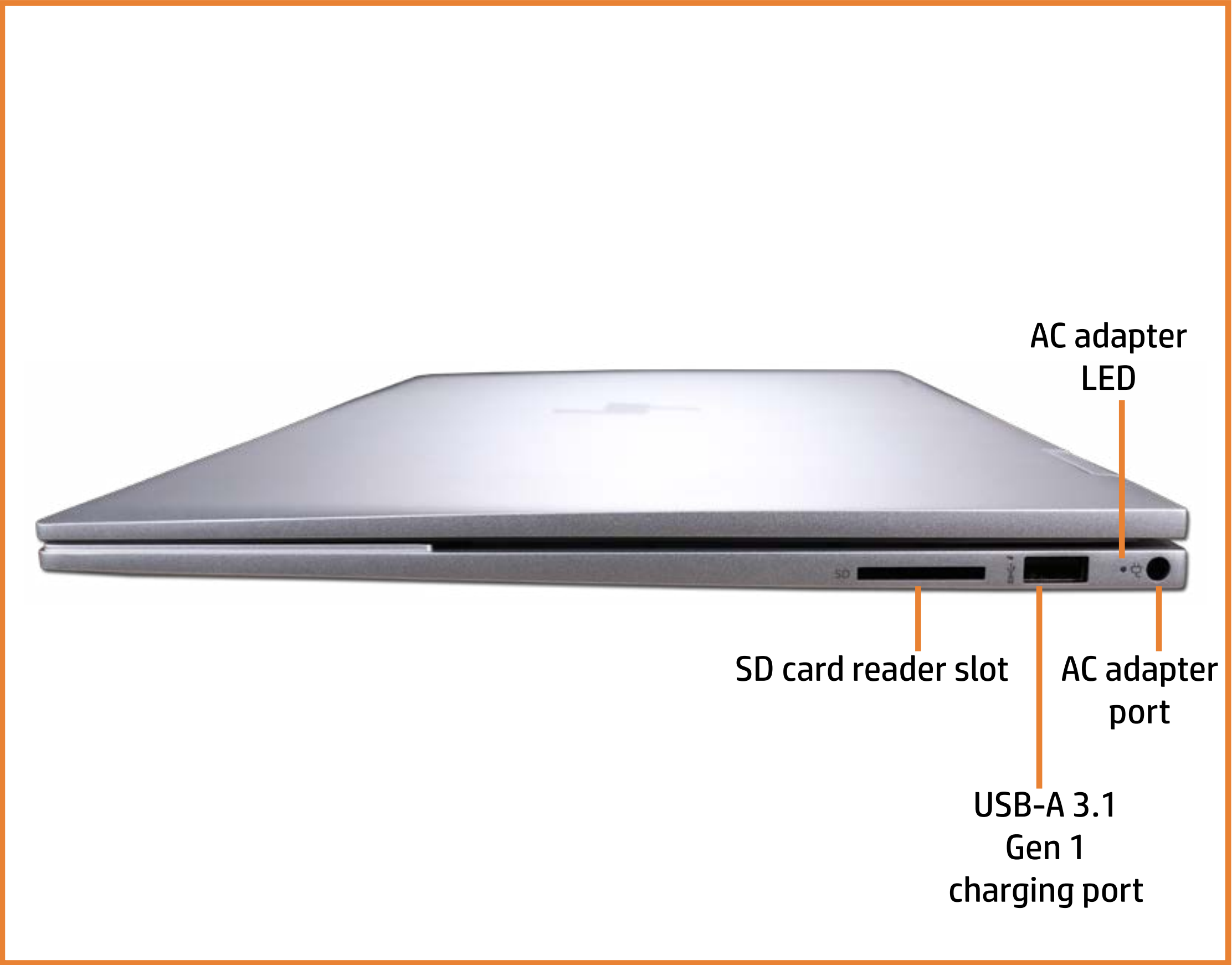
[Back to External Views](#)



[Go to Parts List](#)

Right View

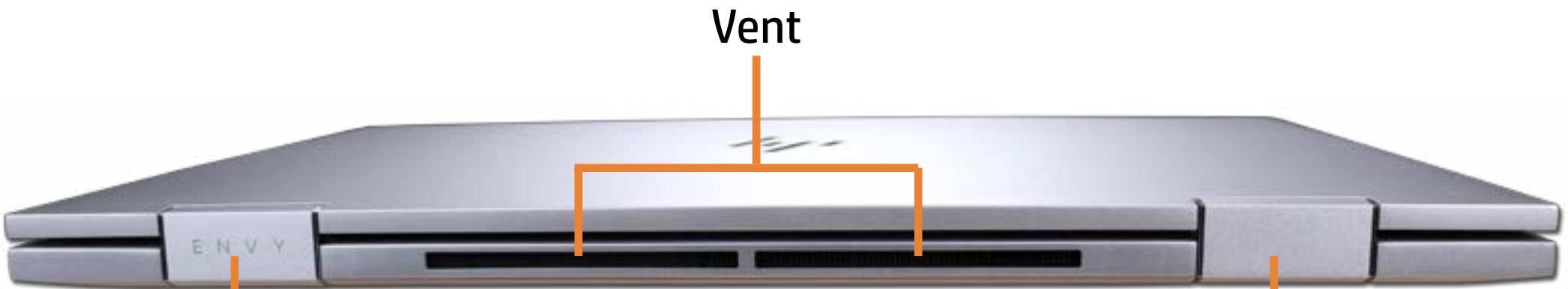
[Back to External Views](#)



[Go to Parts List](#)

Rear View

[Back to External Views](#)



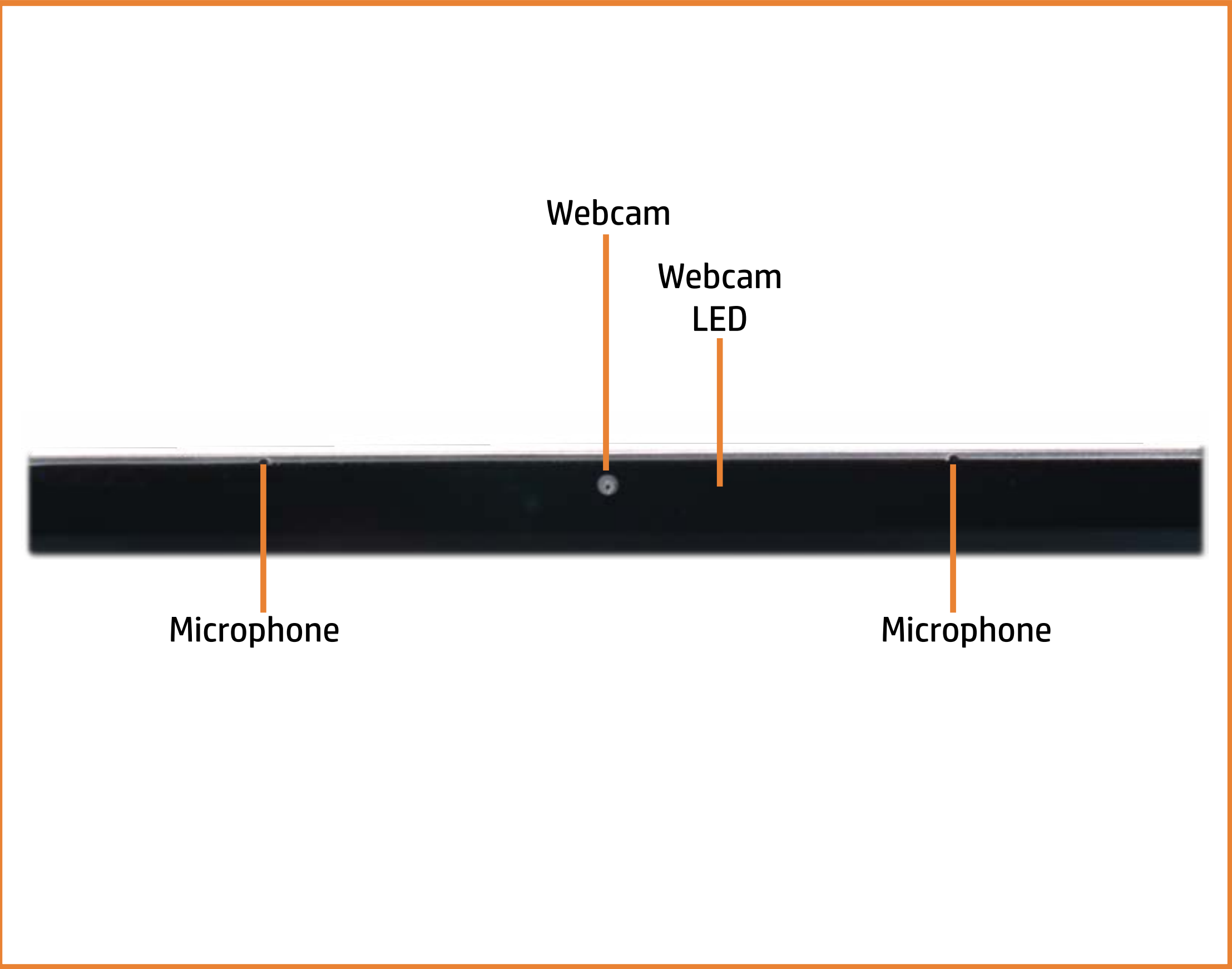
Vent

Hinge

[Go to Parts List](#)

Display View

[Back to External Views](#)



[Go to Parts List](#)

Top View

[Back to External Views](#)

Volume mute
key and LED

Volume control
keys

Microphone mute
key and LED

HP Command Center

Power button and LED

Camera shutter key and LED

Fingerprint reader

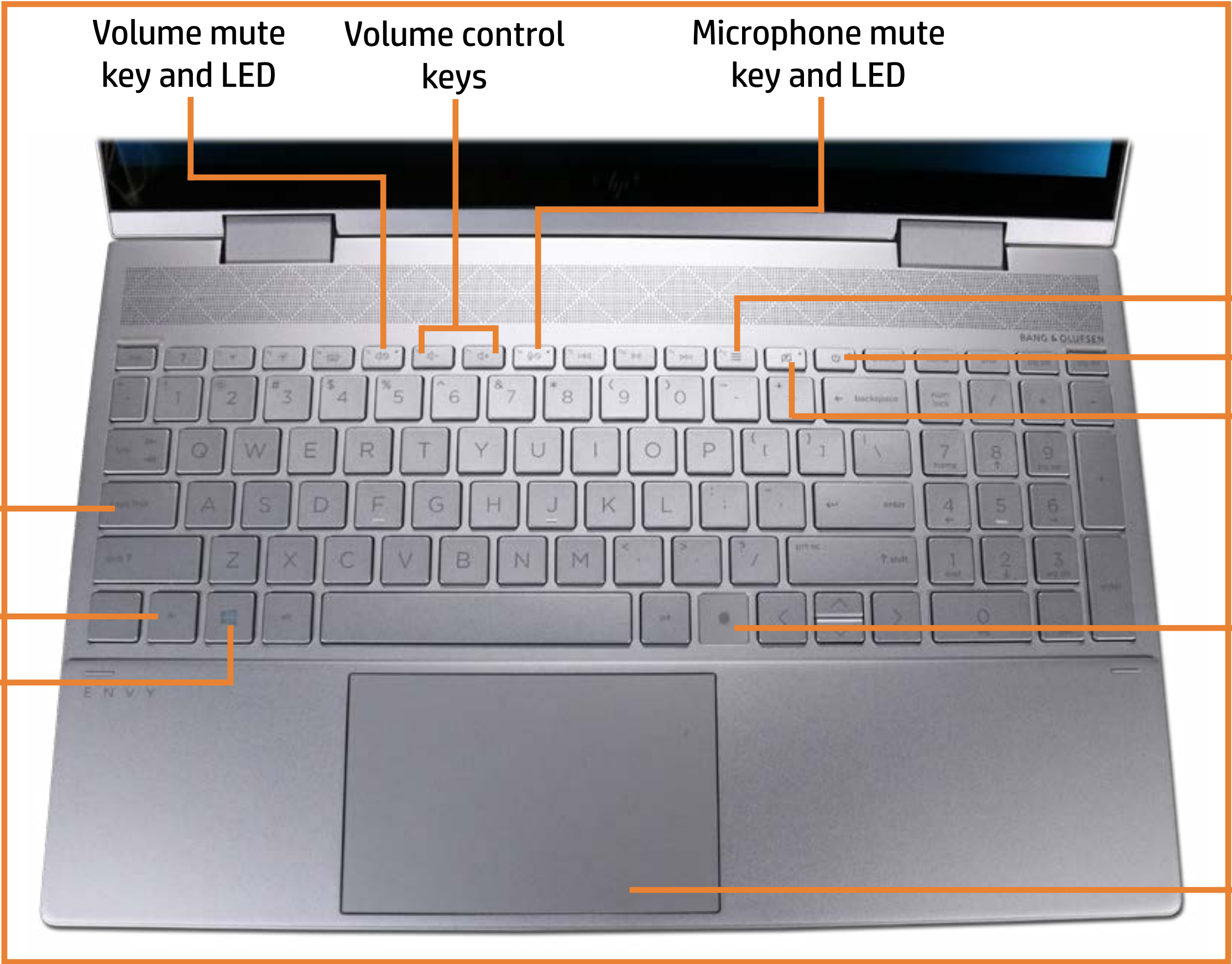
Clickpad

Caps lock key and LED

Fn key

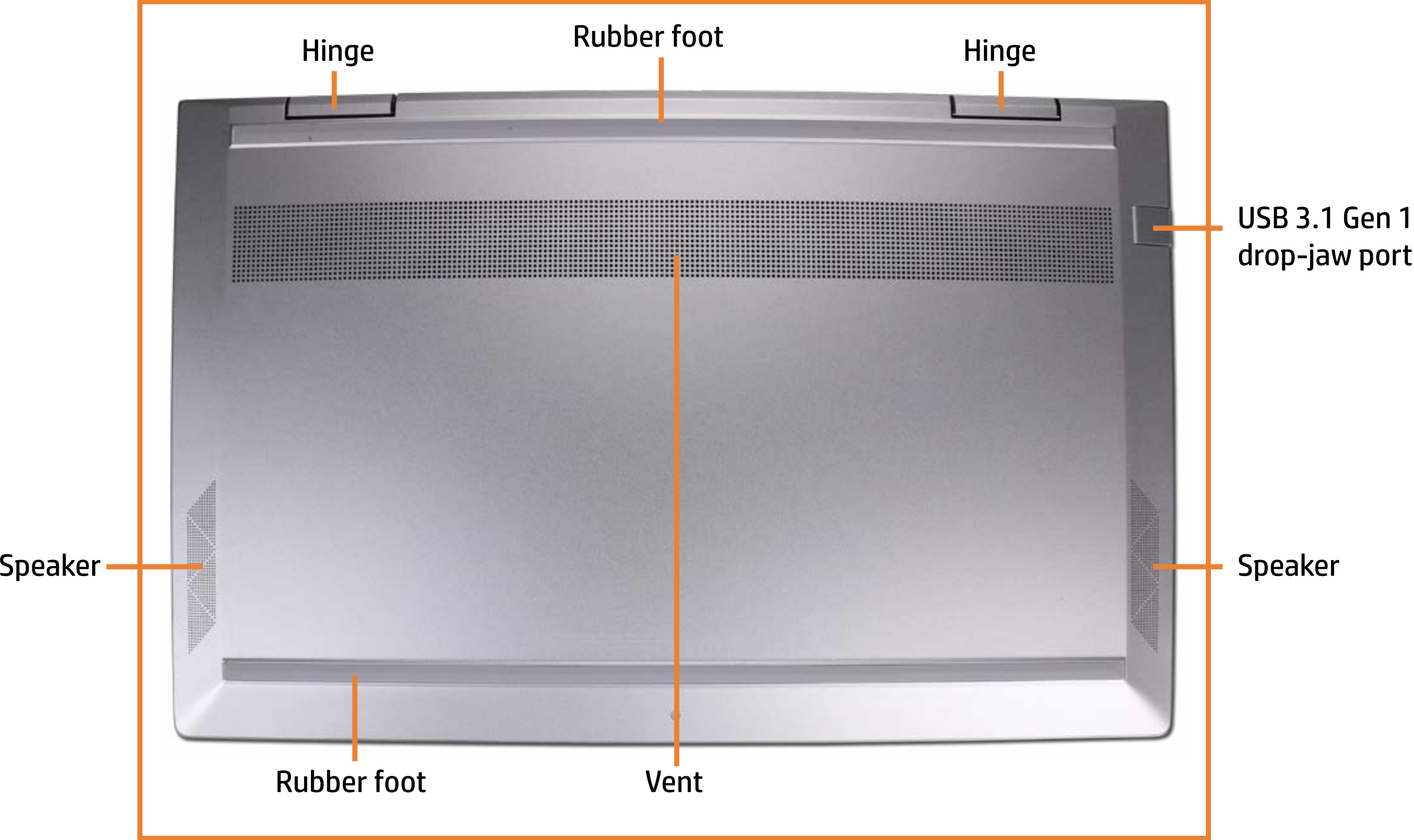
Windows key

[Go to Parts List](#)



Bottom View

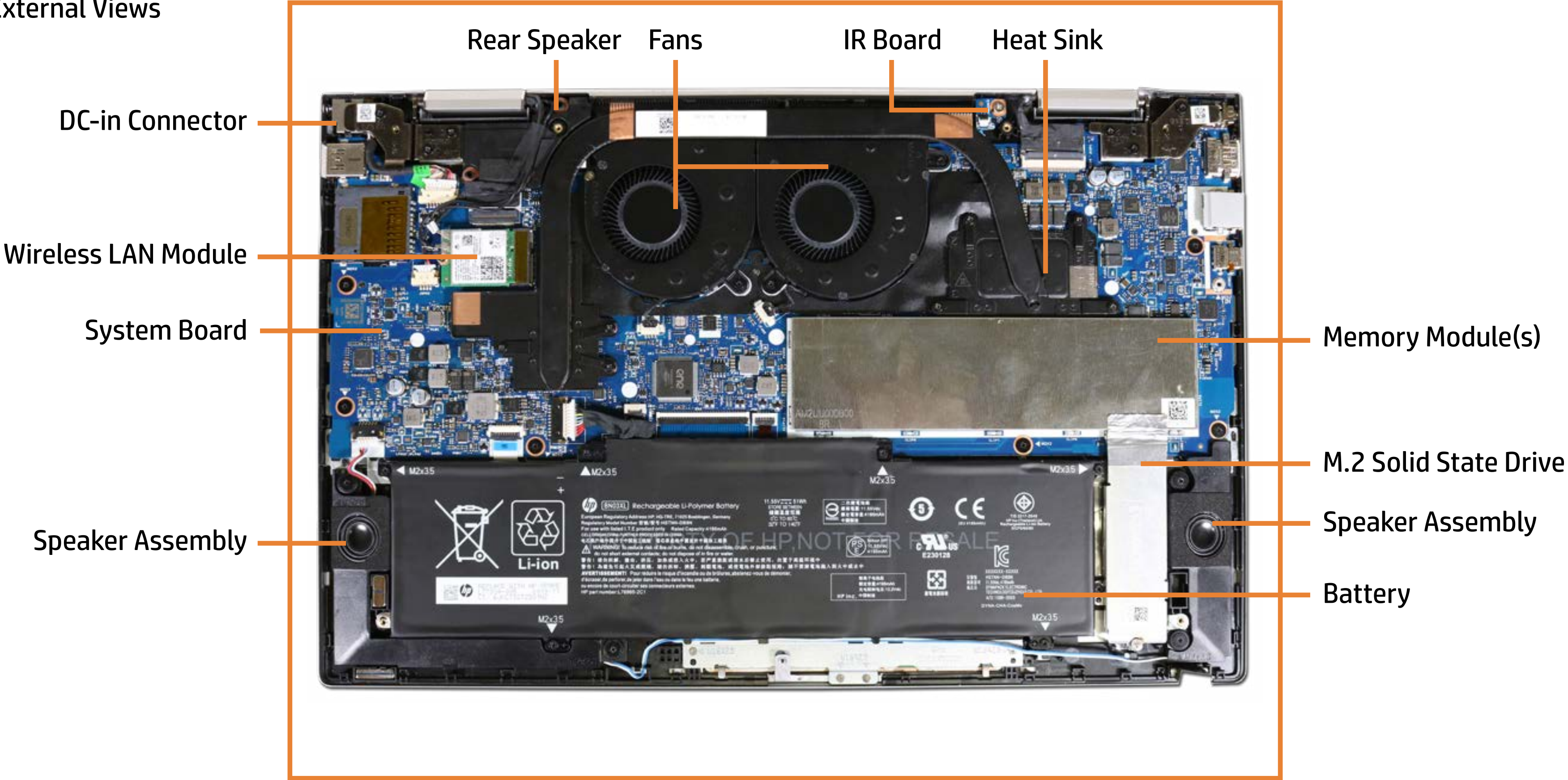
[Back to External Views](#)



[Go to Parts List](#)

Internal View

[Back to External Views](#)



[Go to Parts List](#)

Base Enclosure

Base Enclosure

- Battery
- Speaker Assembly
- M.2 Solid State Drive
- Wireless LAN Module
- Touchpad Board
- Memory Module(s)
- Fans
- Heat Sink (Discrete)
- Heat Sink (UMA)
- Rear Speaker
- IR Board
- DC-in Connector
- System Board (Discrete Top)
- System Board (Discrete Bottom)
- System Board (UMA Top)
- System Board (UMA Bottom)
- Top Cover with Keyboard
- Display Panel Assembly
- Display Panel
- Display Panel Cable
- Touch Control Board
- Touch Control Board Cable
- Webcam
- Hinges
- Hinge Caps
- Wireless LAN Antennas
- Display Enclosure



Go to External Views

Battery

Base Enclosure

Battery

Speaker Assembly

M.2 Solid State Drive

Wireless LAN Module

Touchpad Board

Memory Module(s)

Fans

Heat Sink (Discrete)

Heat Sink (UMA)

Rear Speaker

IR Board

DC-in Connector

System Board (Discrete Top)

System Board (Discrete Bottom)

System Board (UMA Top)

System Board (UMA Bottom)

Top Cover with Keyboard

Display Panel Assembly

Display Panel

Display Panel Cable

Touch Control Board

Touch Control Board Cable

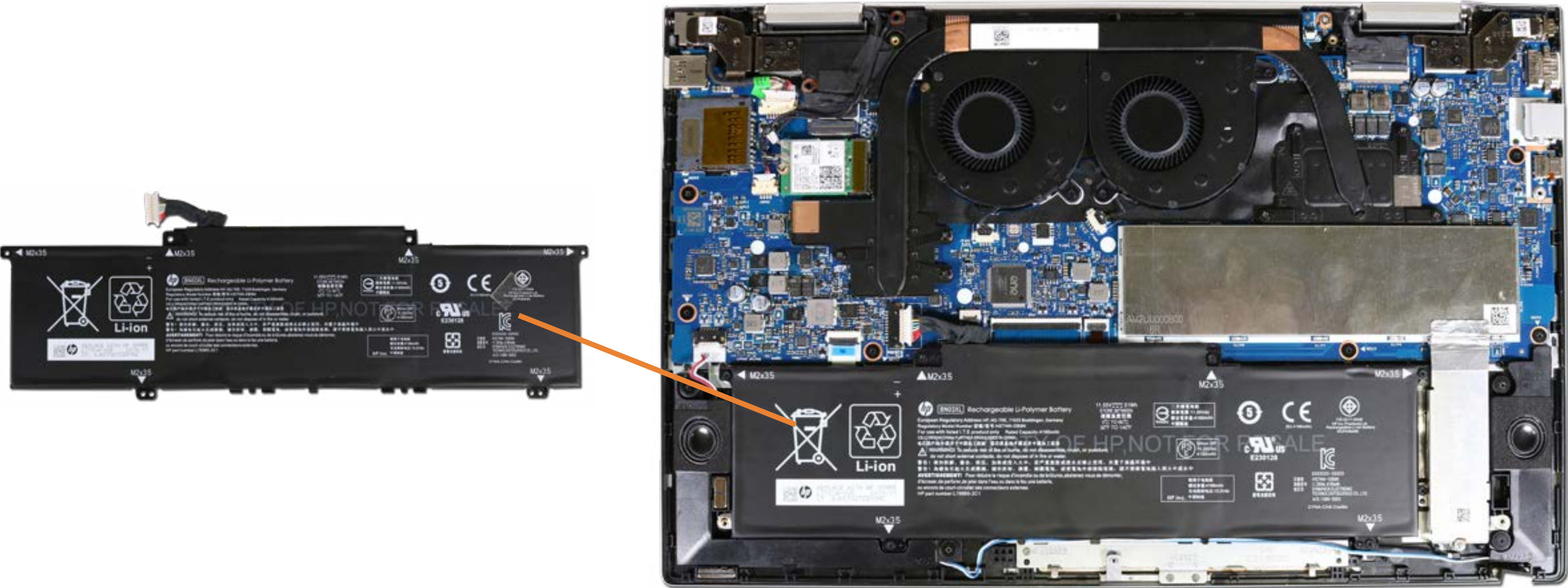
Webcam

Hinges

Hinge Caps

Wireless LAN Antennas

Display Enclosure



Go to External Views

Speaker Assembly

Base Enclosure

Battery

Speaker Assembly

M.2 Solid State Drive

Wireless LAN Module

Touchpad Board

Memory Module(s)

Fans

Heat Sink (Discrete)

Heat Sink (UMA)

Rear Speaker

IR Board

DC-in Connector

System Board (Discrete Top)

System Board (Discrete Bottom)

System Board (UMA Top)

System Board (UMA Bottom)

Top Cover with Keyboard

Display Panel Assembly

Display Panel

Display Panel Cable

Touch Control Board

Touch Control Board Cable

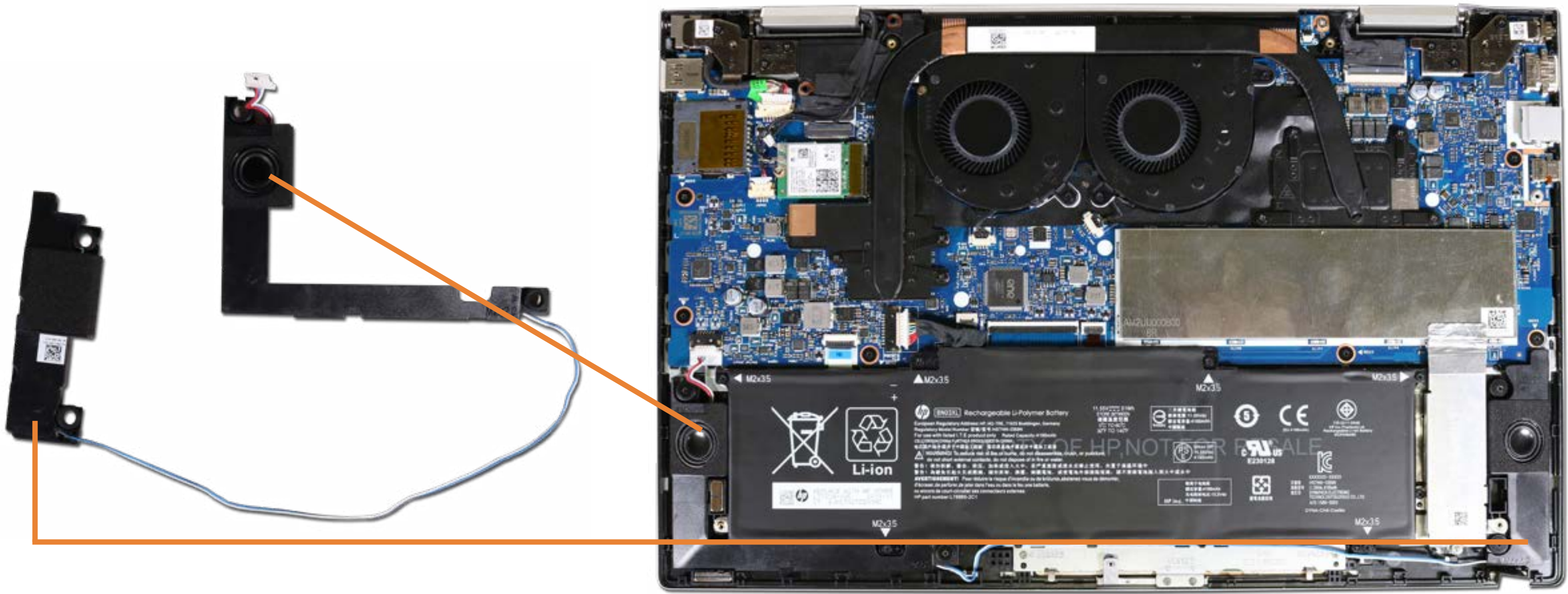
Webcam

Hinges

Hinge Caps

Wireless LAN Antennas

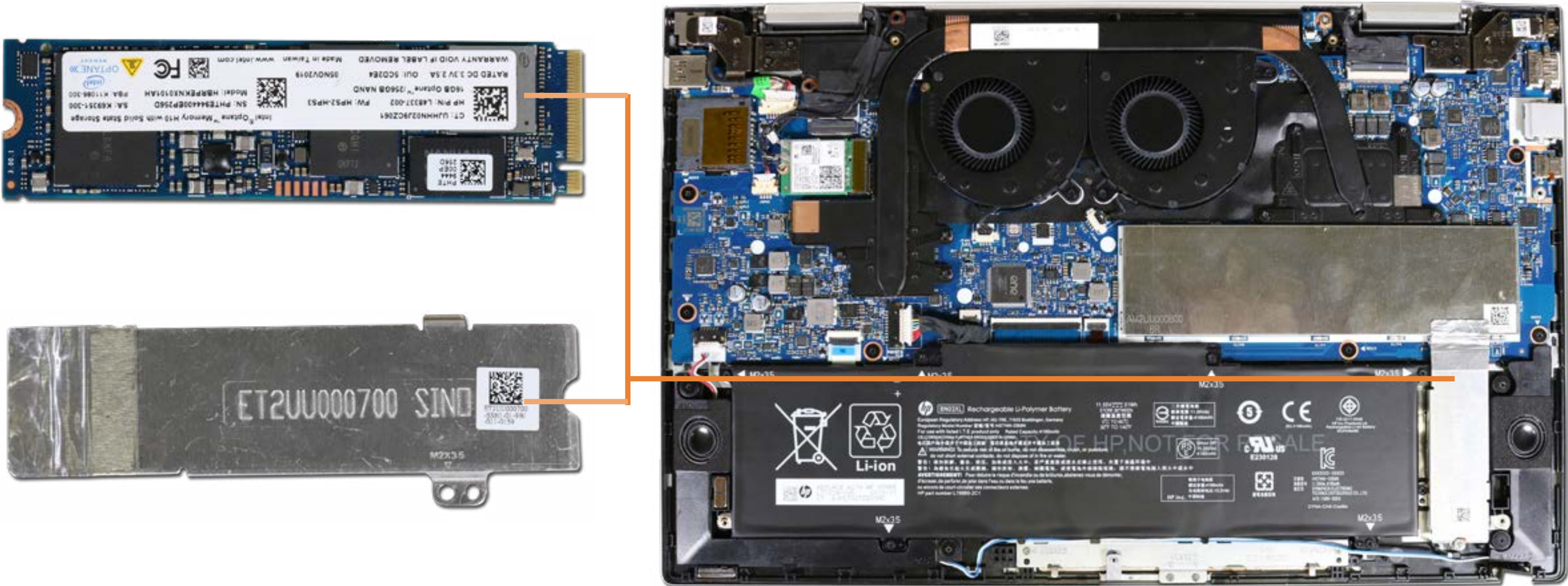
Display Enclosure



Go to External Views

M.2 Solid State Drive

- Base Enclosure
- Battery
- Speaker Assembly
- M.2 Solid State Drive**
- Wireless LAN Module
- Touchpad Board
- Memory Module(s)
- Fans
- Heat Sink (Discrete)
- Heat Sink (UMA)
- Rear Speaker
- IR Board
- DC-in Connector
- System Board (Discrete Top)
- System Board (Discrete Bottom)
- System Board (UMA Top)
- System Board (UMA Bottom)
- Top Cover with Keyboard
- Display Panel Assembly
- Display Panel
- Display Panel Cable
- Touch Control Board
- Touch Control Board Cable
- Webcam
- Hinges
- Hinge Caps
- Wireless LAN Antennas
- Display Enclosure



Go to External Views

Wireless LAN Module

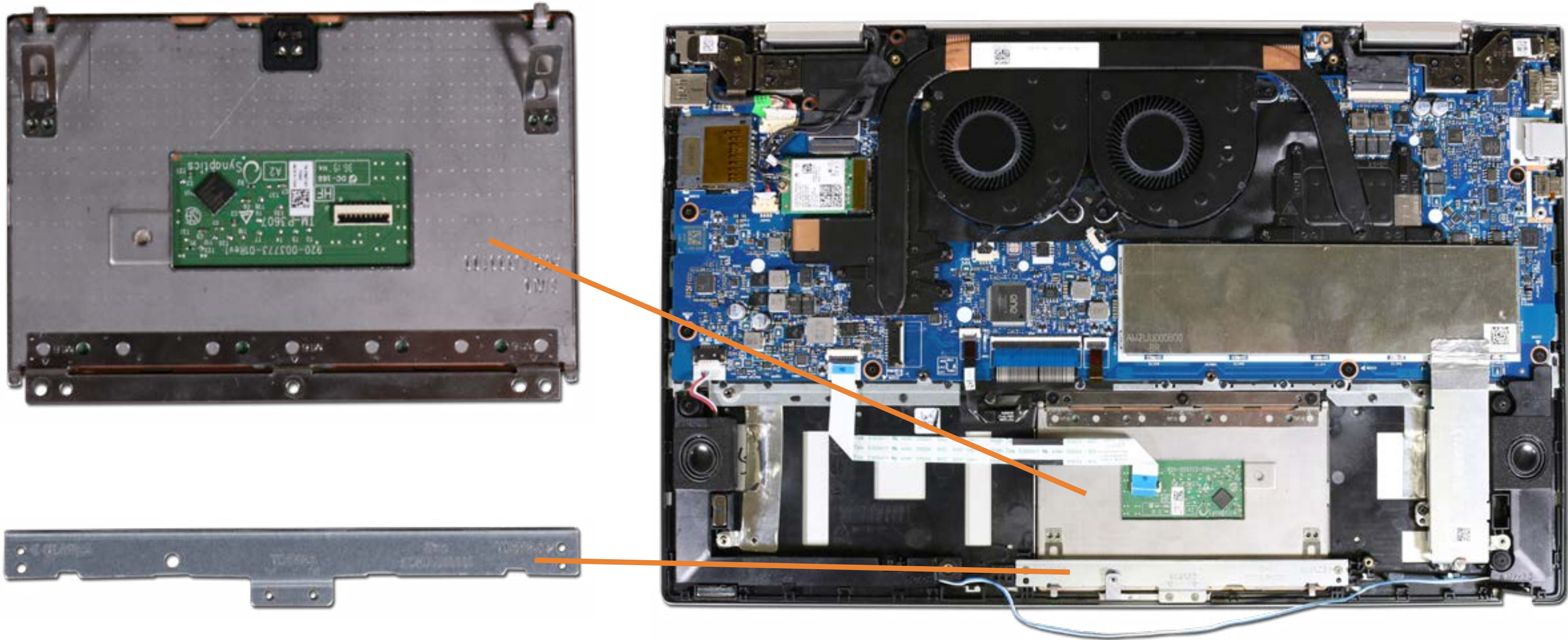
- Base Enclosure
- Battery
- Speaker Assembly
- M.2 Solid State Drive
- Wireless LAN Module**
- Touchpad Board
- Memory Module(s)
- Fans
- Heat Sink (Discrete)
- Heat Sink (UMA)
- Rear Speaker
- IR Board
- DC-in Connector
- System Board (Discrete Top)
- System Board (Discrete Bottom)
- System Board (UMA Top)
- System Board (UMA Bottom)
- Top Cover with Keyboard
- Display Panel Assembly
- Display Panel
- Display Panel Cable
- Touch Control Board
- Touch Control Board Cable
- Webcam
- Hinges
- Hinge Caps
- Wireless LAN Antennas
- Display Enclosure



Go to External Views

Touchpad Board

- Base Enclosure
- Battery
- Speaker Assembly
- M.2 Solid State Drive
- Wireless LAN Module
- Touchpad Board**
- Memory Module(s)
- Fans
- Heat Sink (Discrete)
- Heat Sink (UMA)
- Rear Speaker
- IR Board
- DC-in Connector
- System Board (Discrete Top)
- System Board (Discrete Bottom)
- System Board (UMA Top)
- System Board (UMA Bottom)
- Top Cover with Keyboard
- Display Panel Assembly
- Display Panel
- Display Panel Cable
- Touch Control Board
- Touch Control Board Cable
- Webcam
- Hinges
- Hinge Caps
- Wireless LAN Antennas
- Display Enclosure



Go to External Views

Memory Module(s)

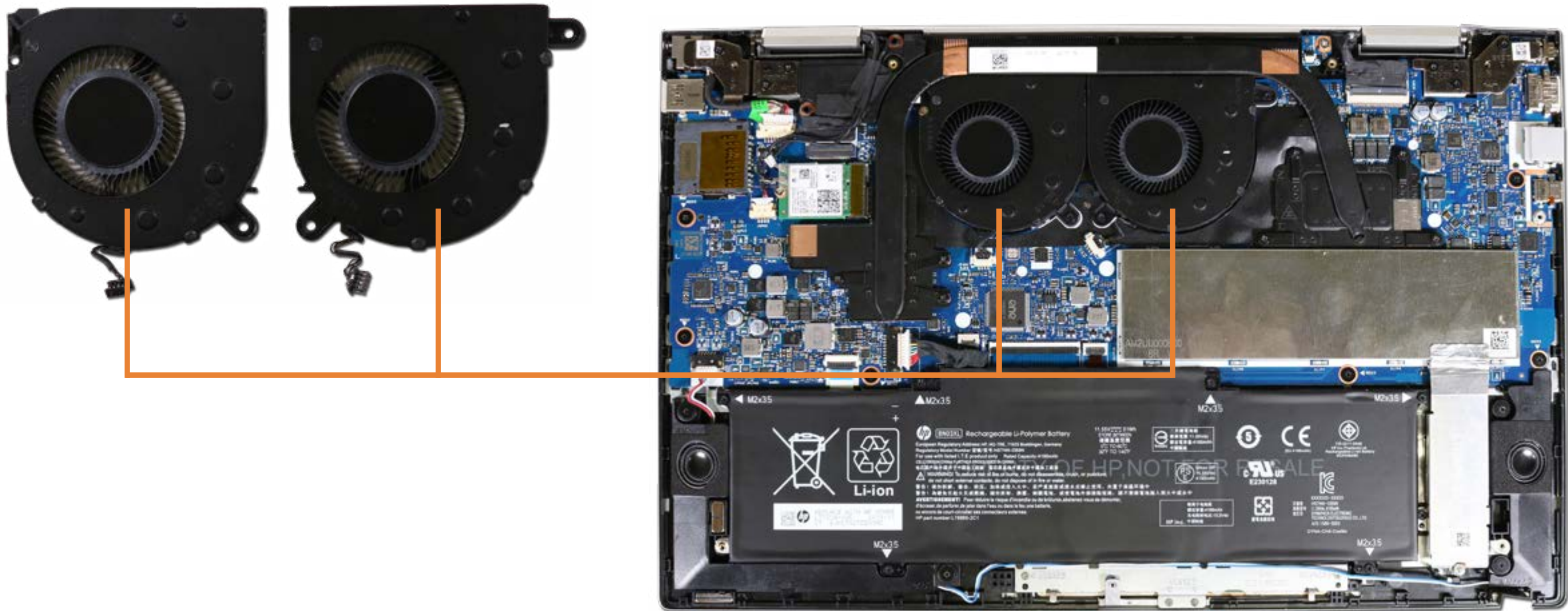
- Base Enclosure
- Battery
- Speaker Assembly
- M.2 Solid State Drive
- Wireless LAN Module
- Touchpad Board
- Memory Module(s)
- Fans
- Heat Sink (Discrete)
- Heat Sink (UMA)
- Rear Speaker
- IR Board
- DC-in Connector
- System Board (Discrete Top)
- System Board (Discrete Bottom)
- System Board (UMA Top)
- System Board (UMA Bottom)
- Top Cover with Keyboard
- Display Panel Assembly
- Display Panel
- Display Panel Cable
- Touch Control Board
- Touch Control Board Cable
- Webcam
- Hinges
- Hinge Caps
- Wireless LAN Antennas
- Display Enclosure



Go to External Views

Fans

- Base Enclosure
- Battery
- Speaker Assembly
- M.2 Solid State Drive
- Wireless LAN Module
- Touchpad Board
- Memory Module(s)
- Fans**
- Heat Sink (Discrete)
- Heat Sink (UMA)
- Rear Speaker
- IR Board
- DC-in Connector
- System Board (Discrete Top)
- System Board (Discrete Bottom)
- System Board (UMA Top)
- System Board (UMA Bottom)
- Top Cover with Keyboard
- Display Panel Assembly
- Display Panel
- Display Panel Cable
- Touch Control Board
- Touch Control Board Cable
- Webcam
- Hinges
- Hinge Caps
- Wireless LAN Antennas
- Display Enclosure

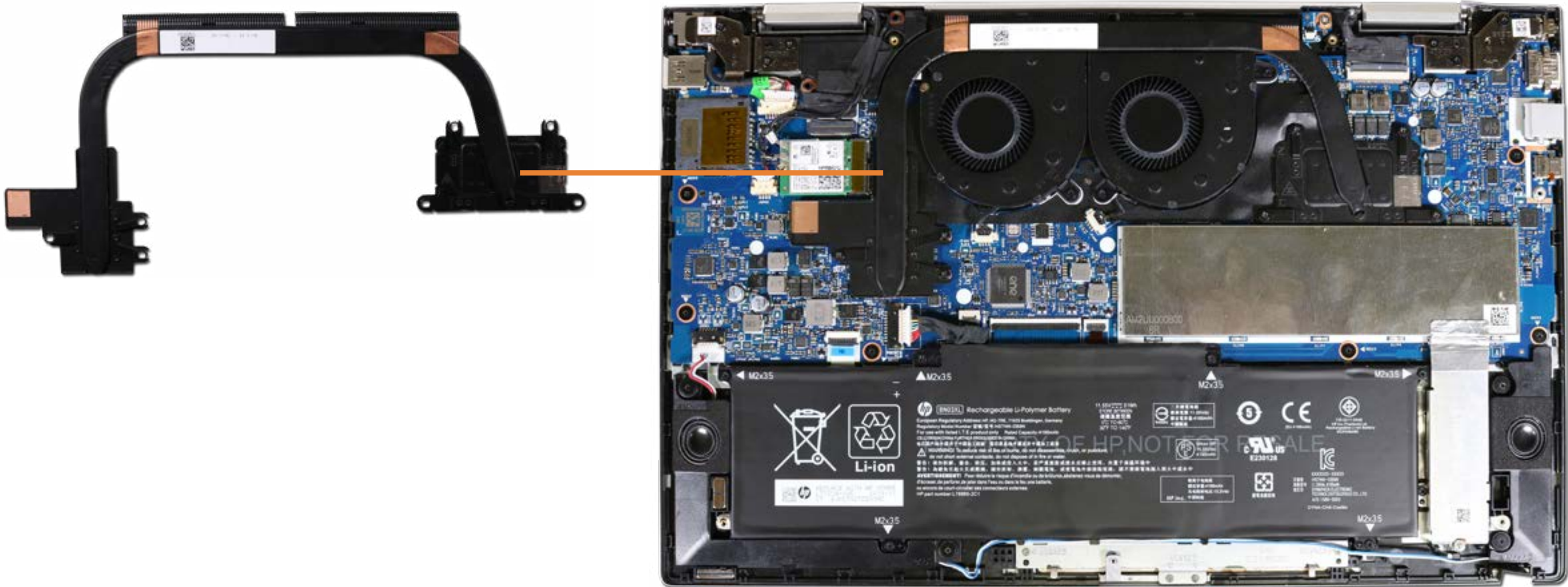


* Note: The HP ENVY x360 15-ed0000 Convertible PC with UMA graphics will only have one fan.

Go to External Views

Heat Sink (Discrete)

- Base Enclosure
- Battery
- Speaker Assembly
- M.2 Solid State Drive
- Wireless LAN Module
- Touchpad Board
- Memory Module(s)
- Fans
- Heat Sink (Discrete)
- Heat Sink (UMA)
- Rear Speaker
- IR Board
- DC-in Connector
- System Board (Discrete Top)
- System Board (Discrete Bottom)
- System Board (UMA Top)
- System Board (UMA Bottom)
- Top Cover with Keyboard
- Display Panel Assembly
- Display Panel
- Display Panel Cable
- Touch Control Board
- Touch Control Board Cable
- Webcam
- Hinges
- Hinge Caps
- Wireless LAN Antennas
- Display Enclosure



Go to External Views

- Base Enclosure
- Battery
- Speaker Assembly
- M.2 Solid State Drive
- Wireless LAN Module
- Touchpad Board
- Memory Module(s)
- Fans
- Heat Sink (Discrete)
- Heat Sink (UMA)
- Rear Speaker
- IR Board
- DC-in Connector
- System Board (Discrete Top)
- System Board (Discrete Bottom)
- System Board (UMA Top)
- System Board (UMA Bottom)
- Top Cover with Keyboard
- Display Panel Assembly
- Display Panel
- Display Panel Cable
- Touch Control Board
- Touch Control Board Cable
- Webcam
- Hinges
- Hinge Caps
- Wireless LAN Antennas
- Display Enclosure

Heat Sink (UMA)

HP ENVY x360 15-ed0000

HP ENVY x360 15-ee0000



Go to External Views

Rear Speaker

- Base Enclosure
- Battery
- Speaker Assembly
- M.2 Solid State Drive
- Wireless LAN Module
- Touchpad Board
- Memory Module(s)
- Fans
- Heat Sink (Discrete)
- Heat Sink (UMA)
- Rear Speaker**
- IR Board
- DC-in Connector
- System Board (Discrete Top)
- System Board (Discrete Bottom)
- System Board (UMA Top)
- System Board (UMA Bottom)
- Top Cover with Keyboard
- Display Panel Assembly
- Display Panel
- Display Panel Cable
- Touch Control Board
- Touch Control Board Cable
- Webcam
- Hinges
- Hinge Caps
- Wireless LAN Antennas
- Display Enclosure



Go to External Views

IR Board

Base Enclosure

Battery

Speaker Assembly

M.2 Solid State Drive

Wireless LAN Module

Touchpad Board

Memory Module(s)

Fans

Heat Sink (Discrete)

Heat Sink (UMA)

Rear Speaker

IR Board

DC-in Connector

System Board (Discrete Top)

System Board (Discrete Bottom)

System Board (UMA Top)

System Board (UMA Bottom)

Top Cover with Keyboard

Display Panel Assembly

Display Panel

Display Panel Cable

Touch Control Board

Touch Control Board Cable

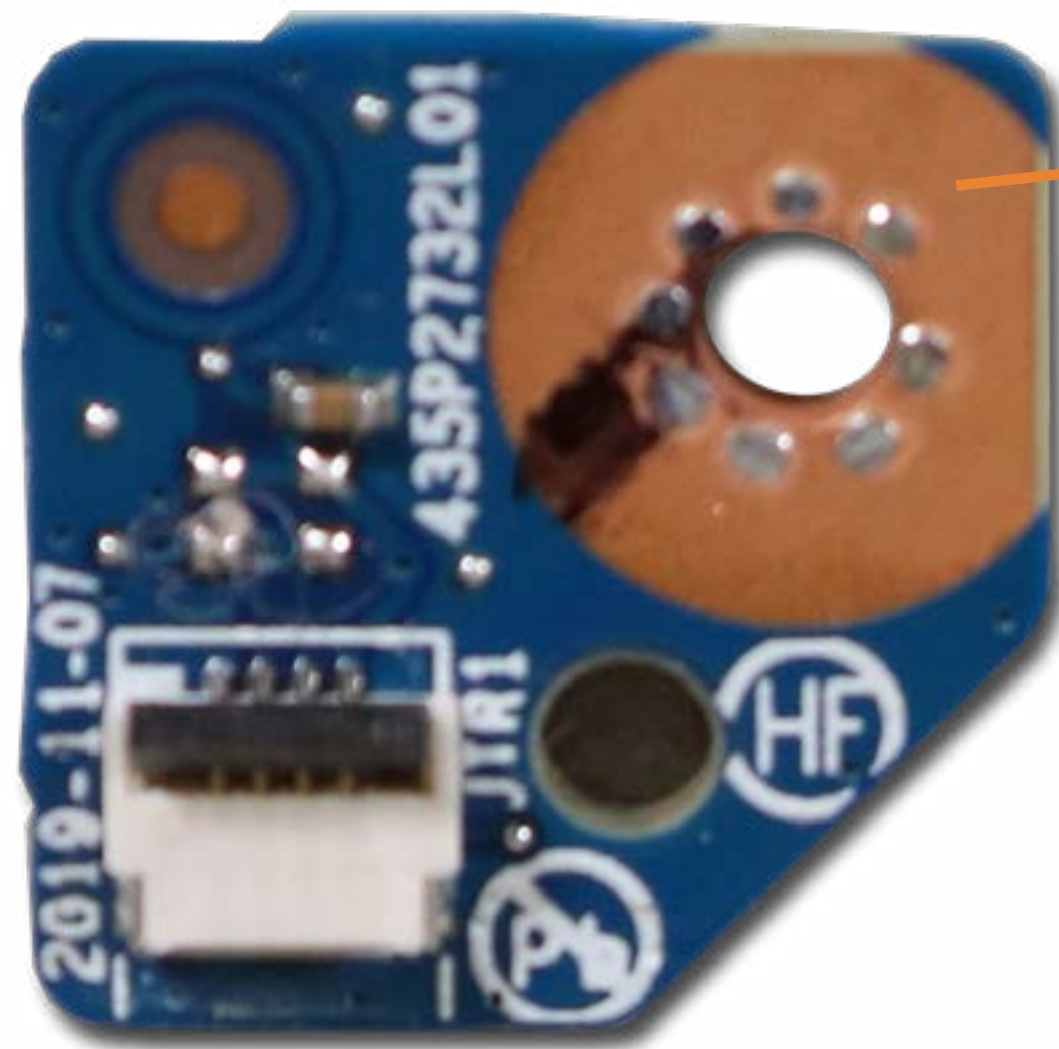
Webcam

Hinges

Hinge Caps

Wireless LAN Antennas

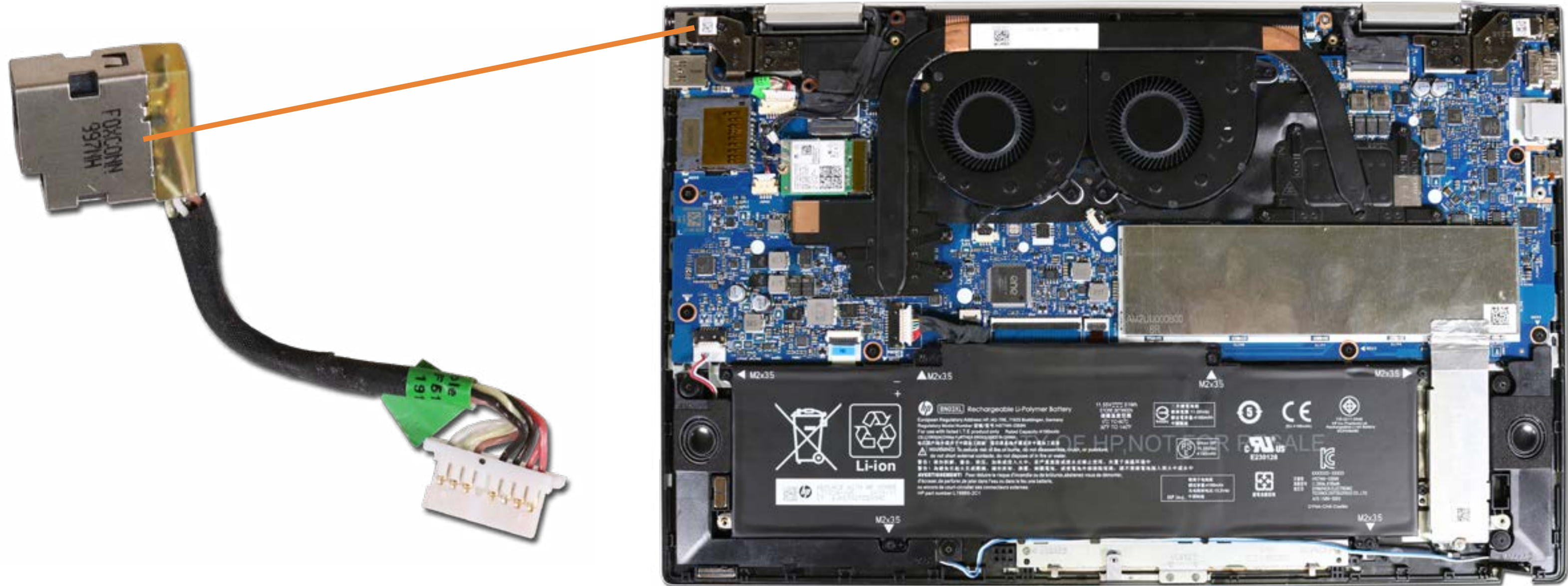
Display Enclosure



Go to External Views

DC-in Connector

- Base Enclosure
- Battery
- Speaker Assembly
- M.2 Solid State Drive
- Wireless LAN Module
- Touchpad Board
- Memory Module(s)
- Fans
- Heat Sink (Discrete)
- Heat Sink (UMA)
- Rear Speaker
- IR Board
- DC-in Connector**
- System Board (Discrete Top)
- System Board (Discrete Bottom)
- System Board (UMA Top)
- System Board (UMA Bottom)
- Top Cover with Keyboard
- Display Panel Assembly
- Display Panel
- Display Panel Cable
- Touch Control Board
- Touch Control Board Cable
- Webcam
- Hinges
- Hinge Caps
- Wireless LAN Antennas
- Display Enclosure



Go to External Views

System Board (Discrete Top)

Base Enclosure

Battery

Speaker Assembly

M.2 Solid State Drive

Wireless LAN Module

Touchpad Board

Memory Module(s)

Fans

Heat Sink (Discrete)

Heat Sink (UMA)

Rear Speaker

IR Board

DC-in Connector

System Board (Discrete Top)

System Board (Discrete Bottom)

System Board (UMA Top)

System Board (UMA Bottom)

Top Cover with Keyboard

Display Panel Assembly

Display Panel

Display Panel Cable

Touch Control Board

Touch Control Board Cable

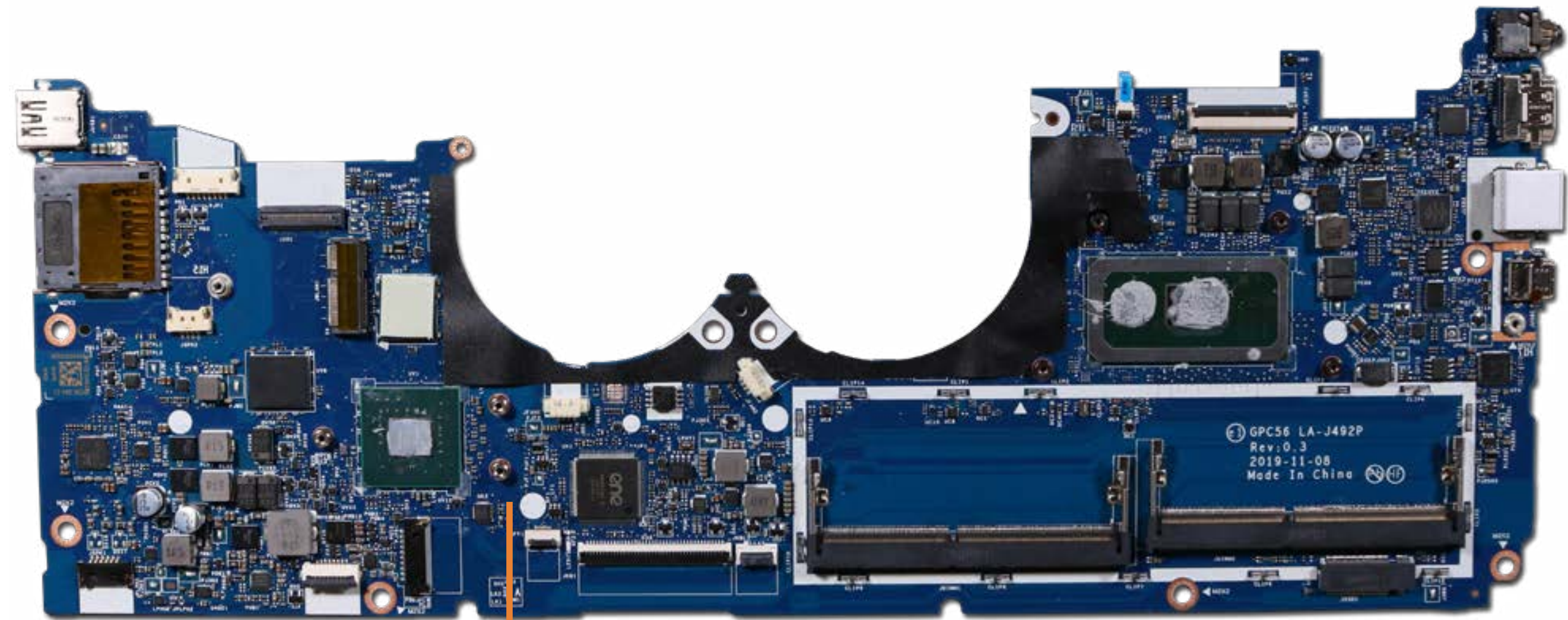
Webcam

Hinges

Hinge Caps

Wireless LAN Antennas

Display Enclosure



[Go to External Views](#)

System Board (Discrete Bottom)

Base Enclosure

Battery

Speaker Assembly

M.2 Solid State Drive

Wireless LAN Module

Touchpad Board

Memory Module(s)

Fans

Heat Sink (Discrete)

Heat Sink (UMA)

Rear Speaker

IR Board

DC-in Connector

System Board (Discrete Top)

System Board (Discrete Bottom)

System Board (UMA Top)

System Board (UMA Bottom)

Top Cover with Keyboard

Display Panel Assembly

Display Panel

Display Panel Cable

Touch Control Board

Touch Control Board Cable

Webcam

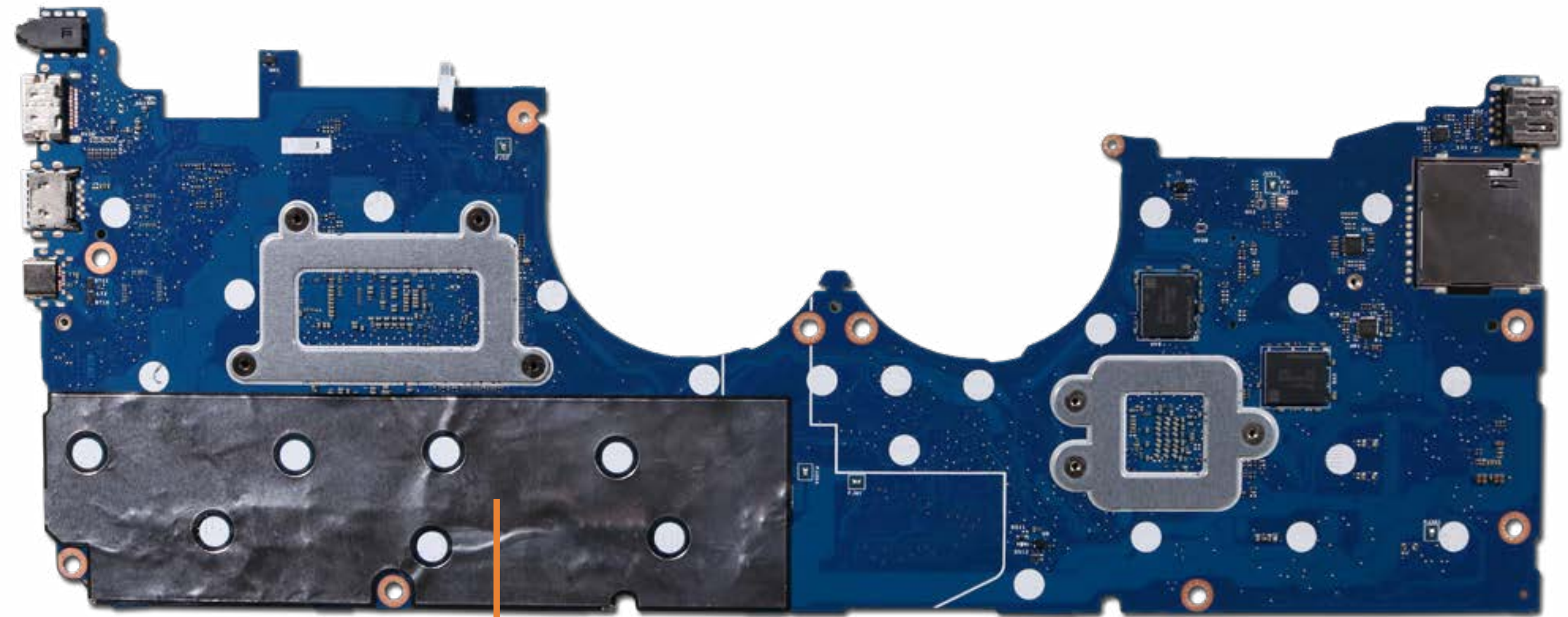
Hinges

Hinge Caps

Wireless LAN Antennas

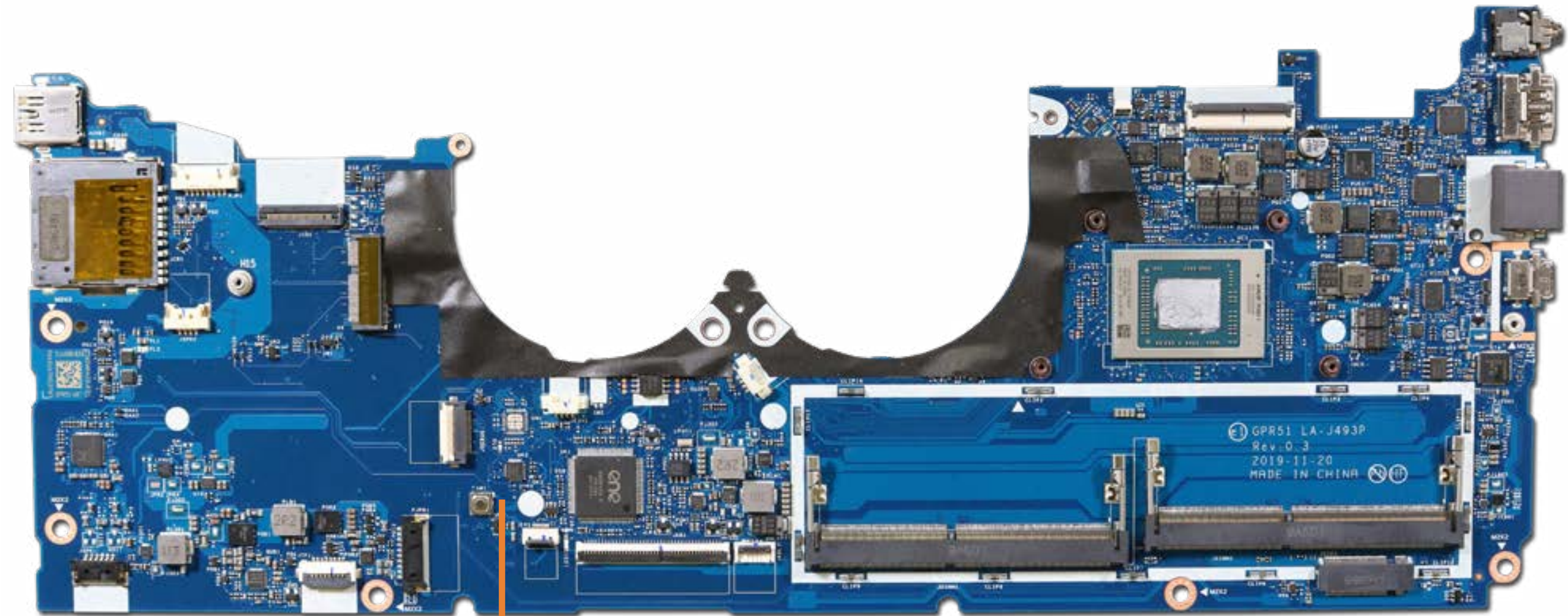
Display Enclosure

[Go to External Views](#)



System Board (UMA Top)

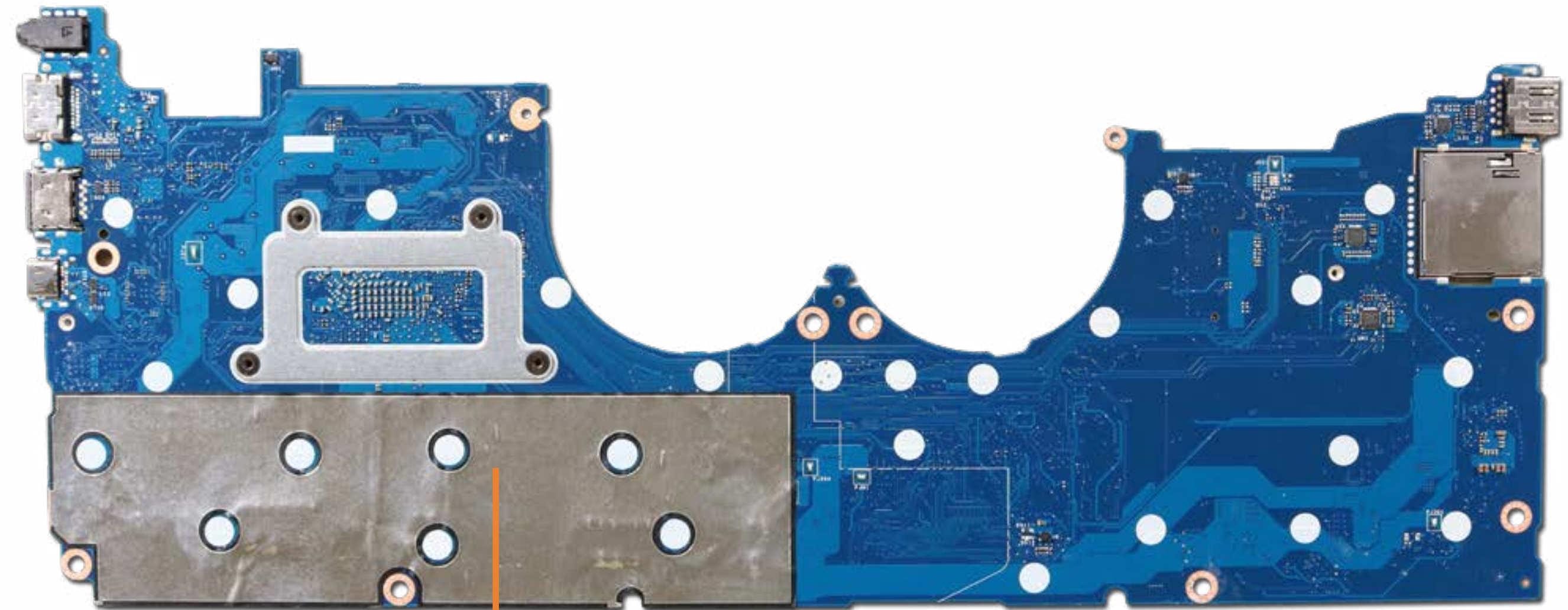
- Base Enclosure
- Battery
- Speaker Assembly
- M.2 Solid State Drive
- Wireless LAN Module
- Touchpad Board
- Memory Module(s)
- Fans
- Heat Sink (Discrete)
- Heat Sink (UMA)
- Rear Speaker
- IR Board
- DC-in Connector
- System Board (Discrete Top)
- System Board (Discrete Bottom)
- System Board (UMA Top)**
- System Board (UMA Bottom)
- Top Cover with Keyboard
- Display Panel Assembly
- Display Panel
- Display Panel Cable
- Touch Control Board
- Touch Control Board Cable
- Webcam
- Hinges
- Hinge Caps
- Wireless LAN Antennas
- Display Enclosure



[Go to External Views](#)

System Board (UMA Bottom)

Base Enclosure
Battery
Speaker Assembly
M.2 Solid State Drive
Wireless LAN Module
Touchpad Board
Memory Module(s)
Fans
Heat Sink (Discrete)
Heat Sink (UMA)
Rear Speaker
IR Board
DC-in Connector
System Board (Discrete Top)
System Board (Discrete Bottom)
System Board (UMA Top)
System Board (UMA Bottom)
Top Cover with Keyboard
Display Panel Assembly
Display Panel
Display Panel Cable
Touch Control Board
Touch Control Board Cable
Webcam
Hinges
Hinge Caps
Wireless LAN Antennas
Display Enclosure



[Go to External Views](#)

Top Cover with Keyboard

- Base Enclosure
- Battery
- Speaker Assembly
- M.2 Solid State Drive
- Wireless LAN Module
- Touchpad Board
- Memory Module(s)
- Fans
- Heat Sink (Discrete)
- Heat Sink (UMA)
- Rear Speaker
- IR Board
- DC-in Connector
- System Board (Discrete Top)
- System Board (Discrete Bottom)
- System Board (UMA Top)
- System Board (UMA Bottom)
- Top Cover with Keyboard**
- Display Panel Assembly
- Display Panel
- Display Panel Cable
- Touch Control Board
- Touch Control Board Cable
- Webcam
- Hinges
- Hinge Caps
- Wireless LAN Antennas
- Display Enclosure



Go to External Views

Display Panel Assembly

- Base Enclosure
- Battery
- Speaker Assembly
- M.2 Solid State Drive
- Wireless LAN Module
- Touchpad Board
- Memory Module(s)
- Fans
- Heat Sink (Discrete)
- Heat Sink (UMA)
- Rear Speaker
- IR Board
- DC-in Connector
- System Board (Discrete Top)
- System Board (Discrete Bottom)
- System Board (UMA Top)
- System Board (UMA Bottom)
- Top Cover with Keyboard
- Display Panel Assembly**
- Display Panel
- Display Panel Cable
- Touch Control Board
- Touch Control Board Cable
- Webcam
- Hinges
- Hinge Caps
- Wireless LAN Antennas
- Display Enclosure



Go to External Views

Display Panel

Base Enclosure
Battery
Speaker Assembly
M.2 Solid State Drive
Wireless LAN Module
Touchpad Board
Memory Module(s)
Fans
Heat Sink (Discrete)
Heat Sink (UMA)
Rear Speaker
IR Board
DC-in Connector
System Board (Discrete Top)
System Board (Discrete Bottom)
System Board (UMA Top)
System Board (UMA Bottom)
Top Cover with Keyboard
Display Panel Assembly
Display Panel
Display Panel Cable
Touch Control Board
Touch Control Board Cable
Webcam
Hinges
Hinge Caps
Wireless LAN Antennas
Display Enclosure



[Go to External Views](#)

Display Panel Cable

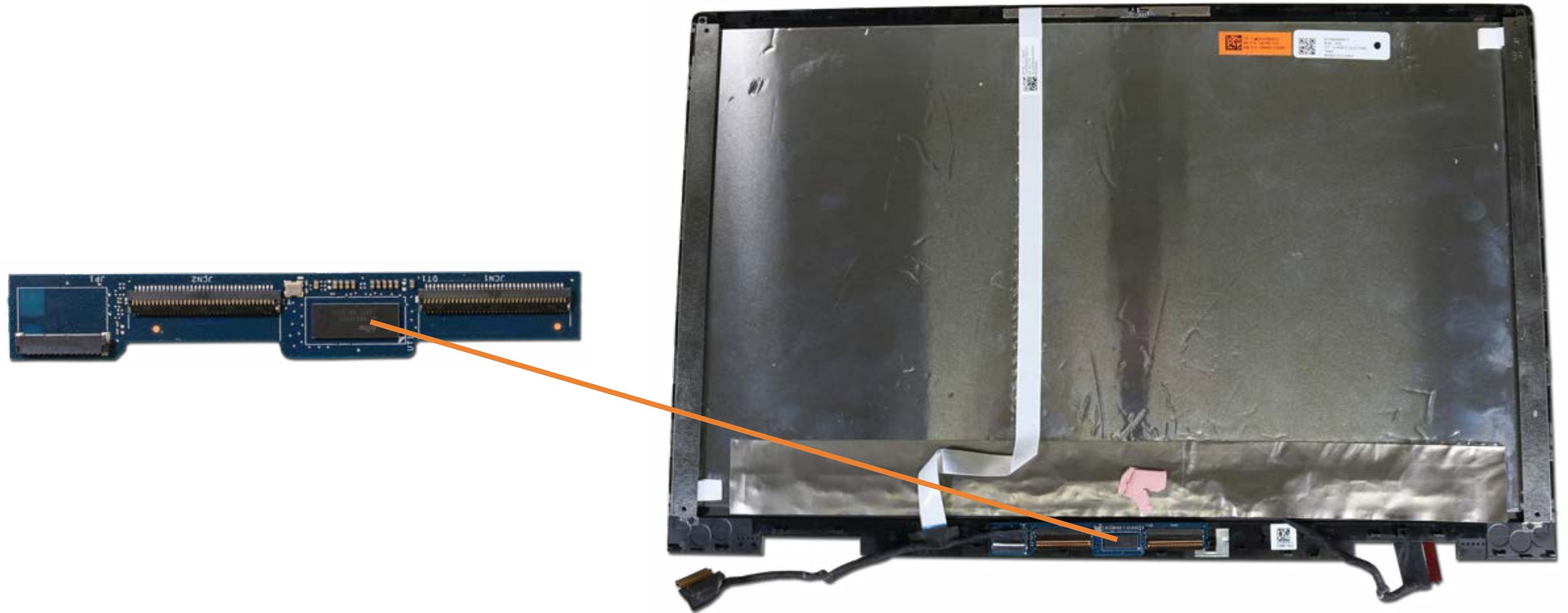
Base Enclosure
Battery
Speaker Assembly
M.2 Solid State Drive
Wireless LAN Module
Touchpad Board
Memory Module(s)
Fans
Heat Sink (Discrete)
Heat Sink (UMA)
Rear Speaker
IR Board
DC-in Connector
System Board (Discrete Top)
System Board (Discrete Bottom)
System Board (UMA Top)
System Board (UMA Bottom)
Top Cover with Keyboard
Display Panel Assembly
Display Panel
Display Panel Cable
Touch Control Board
Touch Control Board Cable
Webcam
Hinges
Hinge Caps
Wireless LAN Antennas
Display Enclosure



[Go to External Views](#)

Touch Control Board

Base Enclosure
Battery
Speaker Assembly
M.2 Solid State Drive
Wireless LAN Module
Touchpad Board
Memory Module(s)
Fans
Heat Sink (Discrete)
Heat Sink (UMA)
Rear Speaker
IR Board
DC-in Connector
System Board (Discrete Top)
System Board (Discrete Bottom)
System Board (UMA Top)
System Board (UMA Bottom)
Top Cover with Keyboard
Display Panel Assembly
Display Panel
Display Panel Cable
Touch Control Board
Touch Control Board Cable
Webcam
Hinges
Hinge Caps
Wireless LAN Antennas
Display Enclosure



[Go to External Views](#)

Touch Control Board Cable

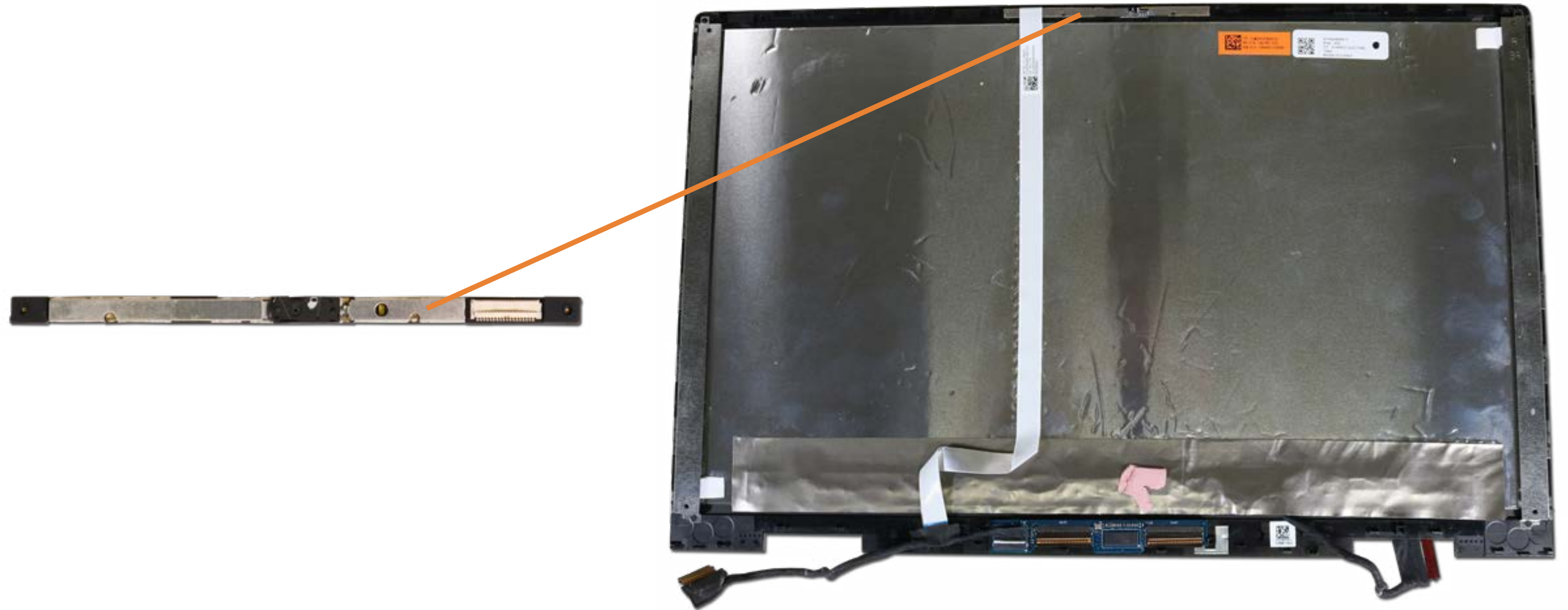
Base Enclosure
Battery
Speaker Assembly
M.2 Solid State Drive
Wireless LAN Module
Touchpad Board
Memory Module(s)
Fans
Heat Sink (Discrete)
Heat Sink (UMA)
Rear Speaker
IR Board
DC-in Connector
System Board (Discrete Top)
System Board (Discrete Bottom)
System Board (UMA Top)
System Board (UMA Bottom)
Top Cover with Keyboard
Display Panel Assembly
Display Panel
Display Panel Cable
Touch Control Board
Touch Control Board Cable
Webcam
Hinges
Hinge Caps
Wireless LAN Antennas
Display Enclosure



[Go to External Views](#)

Webcam

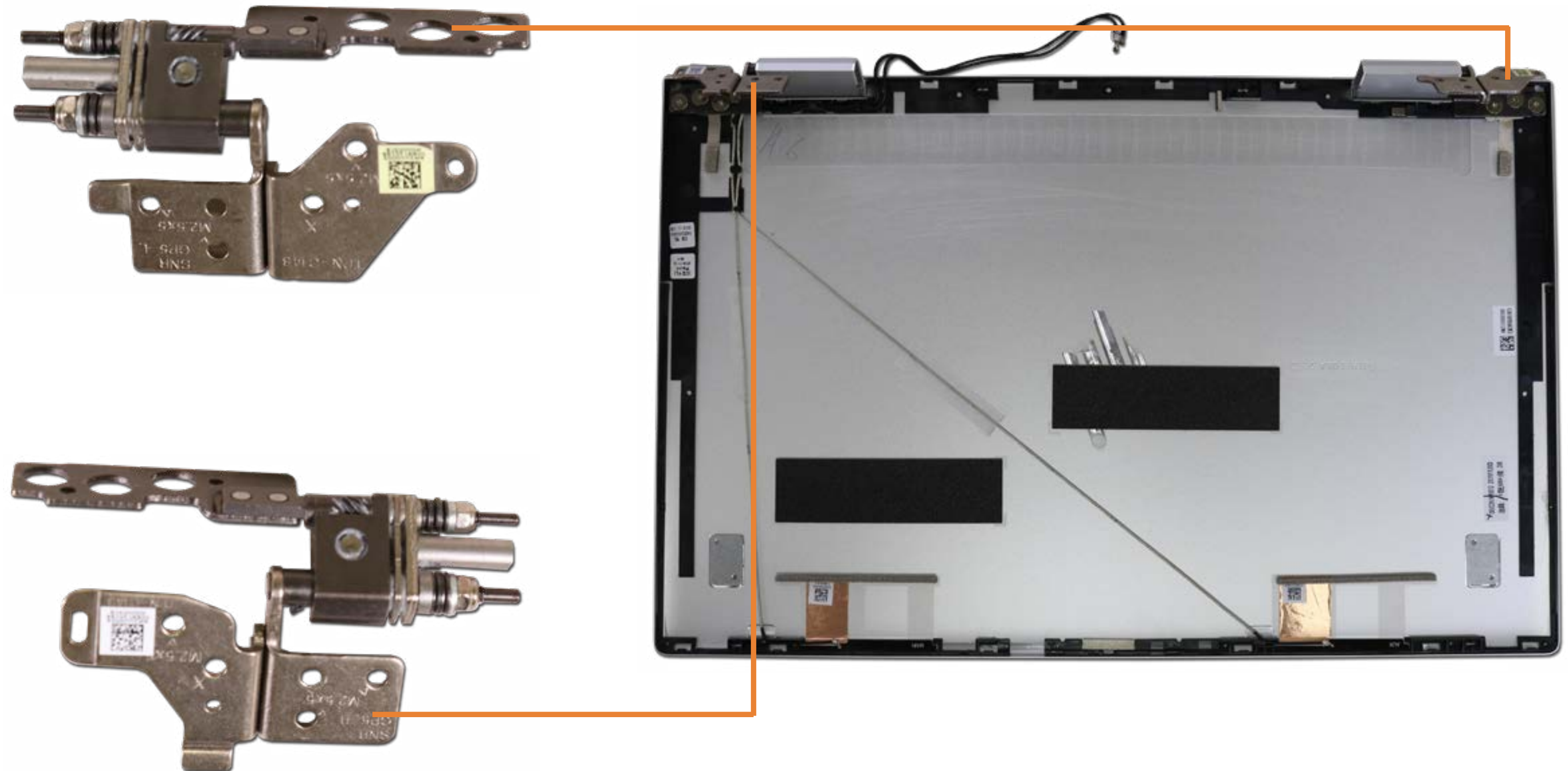
Base Enclosure
Battery
Speaker Assembly
M.2 Solid State Drive
Wireless LAN Module
Touchpad Board
Memory Module(s)
Fans
Heat Sink (Discrete)
Heat Sink (UMA)
Rear Speaker
IR Board
DC-in Connector
System Board (Discrete Top)
System Board (Discrete Bottom)
System Board (UMA Top)
System Board (UMA Bottom)
Top Cover with Keyboard
Display Panel Assembly
Display Panel
Display Panel Cable
Touch Control Board
Touch Control Board Cable
Webcam
Hinges
Hinge Caps
Wireless LAN Antennas
Display Enclosure



[Go to External Views](#)

Hinges

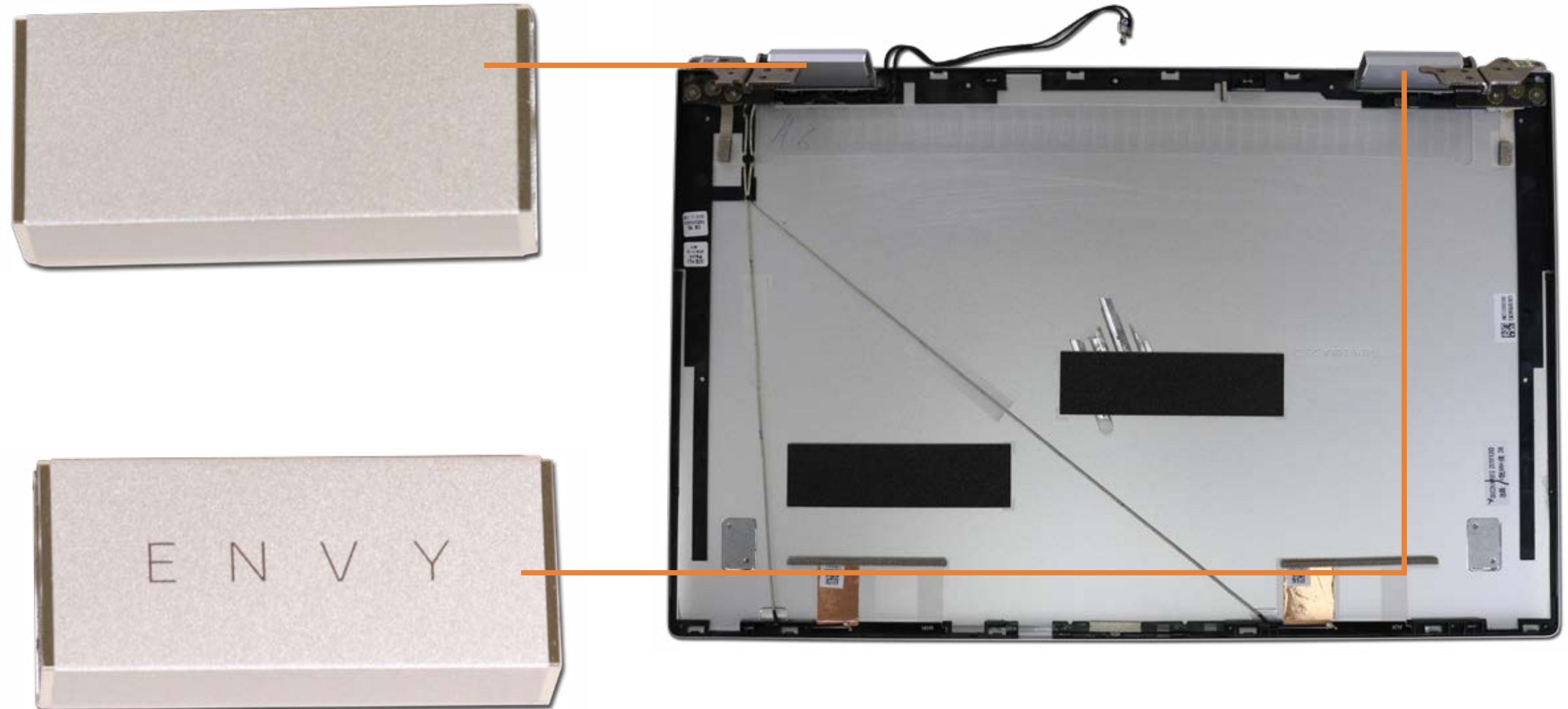
- Base Enclosure
- Battery
- Speaker Assembly
- M.2 Solid State Drive
- Wireless LAN Module
- Touchpad Board
- Memory Module(s)
- Fans
- Heat Sink (Discrete)
- Heat Sink (UMA)
- Rear Speaker
- IR Board
- DC-in Connector
- System Board (Discrete Top)
- System Board (Discrete Bottom)
- System Board (UMA Top)
- System Board (UMA Bottom)
- Top Cover with Keyboard
- Display Panel Assembly
- Display Panel
- Display Panel Cable
- Touch Control Board
- Touch Control Board Cable
- Webcam
- Hinges**
- Hinge Caps
- Wireless LAN Antennas
- Display Enclosure



Go to External Views

Hinge Caps

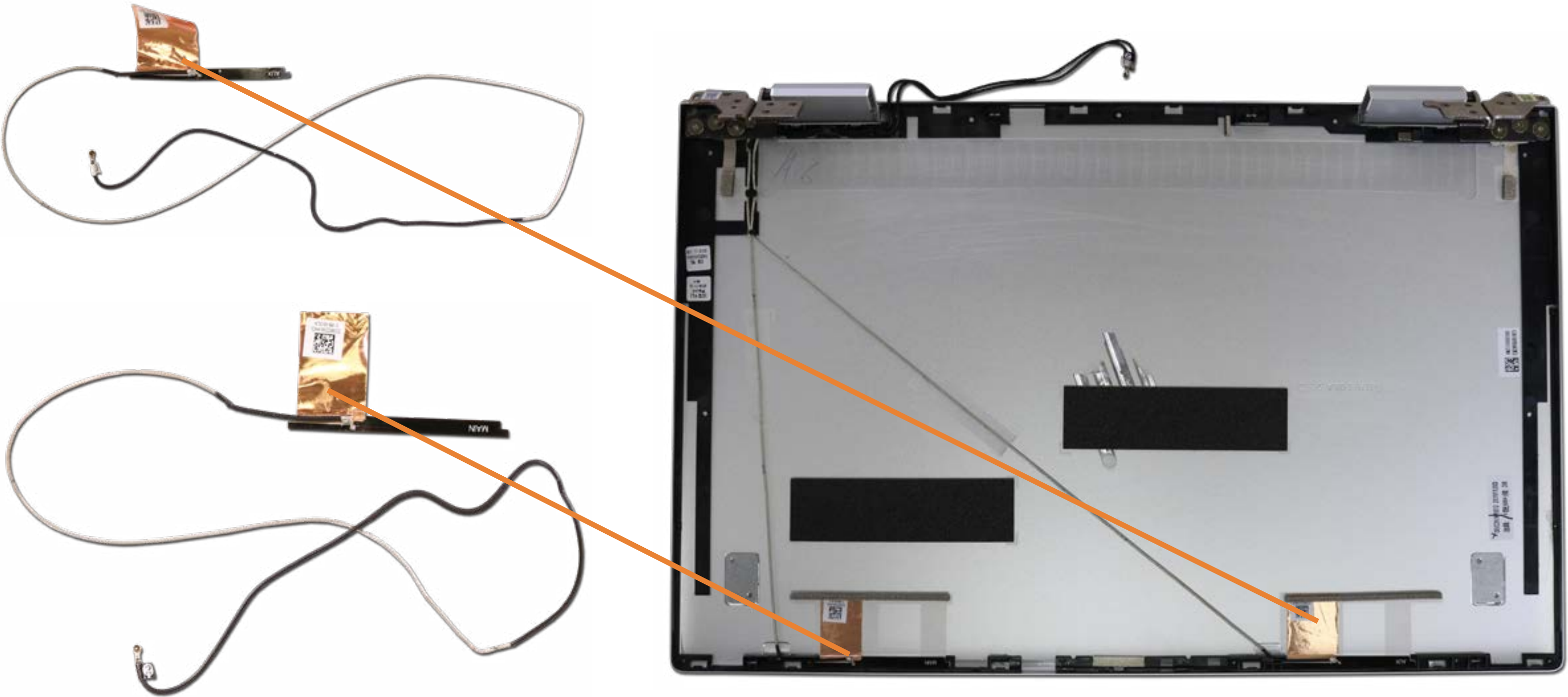
- Base Enclosure
- Battery
- Speaker Assembly
- M.2 Solid State Drive
- Wireless LAN Module
- Touchpad Board
- Memory Module(s)
- Fans
- Heat Sink (Discrete)
- Heat Sink (UMA)
- Rear Speaker
- IR Board
- DC-in Connector
- System Board (Discrete Top)
- System Board (Discrete Bottom)
- System Board (UMA Top)
- System Board (UMA Bottom)
- Top Cover with Keyboard
- Display Panel Assembly
- Display Panel
- Display Panel Cable
- Touch Control Board
- Touch Control Board Cable
- Webcam
- Hinges
- Hinge Caps**
- Wireless LAN Antennas
- Display Enclosure



[Go to External Views](#)

Wireless LAN Antennas

- Base Enclosure
- Battery
- Speaker Assembly
- M.2 Solid State Drive
- Wireless LAN Module
- Touchpad Board
- Memory Module(s)
- Fans
- Heat Sink (Discrete)
- Heat Sink (UMA)
- Rear Speaker
- IR Board
- DC-in Connector
- System Board (Discrete Top)
- System Board (Discrete Bottom)
- System Board (UMA Top)
- System Board (UMA Bottom)
- Top Cover with Keyboard
- Display Panel Assembly
- Display Panel
- Display Panel Cable
- Touch Control Board
- Touch Control Board Cable
- Webcam
- Hinges
- Hinge Caps
- Wireless LAN Antennas
- Display Enclosure



Go to External Views

Display Enclosure

Base Enclosure
Battery
Speaker Assembly
M.2 Solid State Drive
Wireless LAN Module
Touchpad Board
Memory Module(s)
Fans
Heat Sink (Discrete)
Heat Sink (UMA)
Rear Speaker
IR Board
DC-in Connector
System Board (Discrete Top)
System Board (Discrete Bottom)
System Board (UMA Top)
System Board (UMA Bottom)
Top Cover with Keyboard
Display Panel Assembly
Display Panel
Display Panel Cable
Touch Control Board
Touch Control Board Cable
Webcam
Hinges
Hinge Caps
Wireless LAN Antennas
Display Enclosure



[Go to External Views](#)