

Interactive Part Locator

OMEN 25L/30L Desktop PC Series

Welcome to this interactive part locator

Here's how to use it...

[External Views](#) (Click the link to navigate to the views)

On this page you will find large icons of each of the external views of this product. To view a specific view in greater detail, simply click that view.

[Parts List](#) (Click the link to navigate to the parts)

On this page, you will find a list of all of the replaceable parts for this product. To view a specific part and its location in the product, click the part name in the list.

That's it! On every page there is a link that brings you back to either the External Views or the Parts List, enabling you to navigate to whatever view or part you wish to review.

External Views

[Back to Welcome page](#)



Front



Left



Right



Rear



Top



Internal



Bottom

[Go to Parts List](#)

Front View

[Back to External Views](#)



[Go to Parts List](#)

Left View

[Back to External Views](#)



Access panel

[Go to Parts List](#)

Right View

[Back to External Views](#)

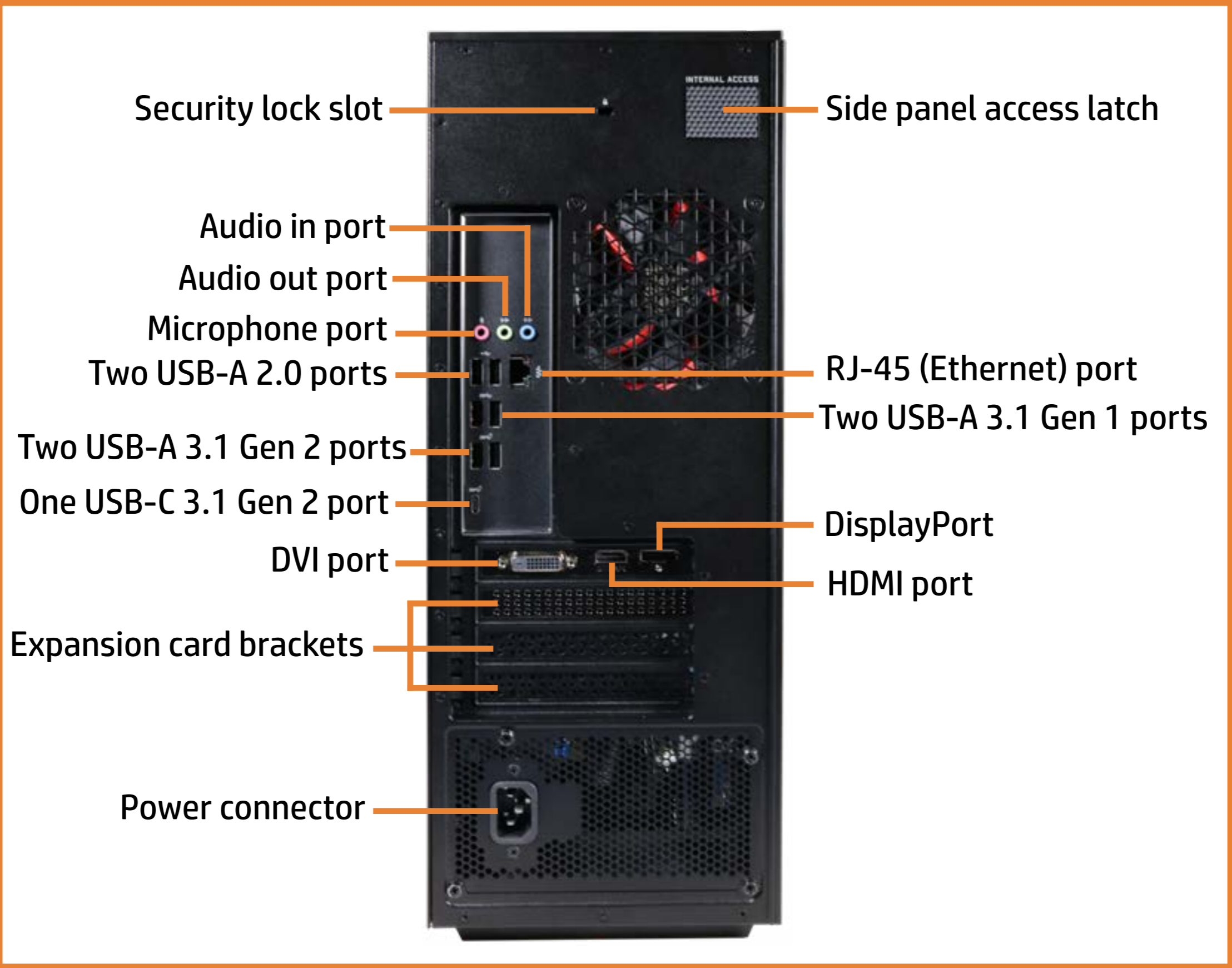


Side panel

[Go to Parts List](#)

Rear View

[Back to External Views](#)



[Go to Parts List](#)

Top View

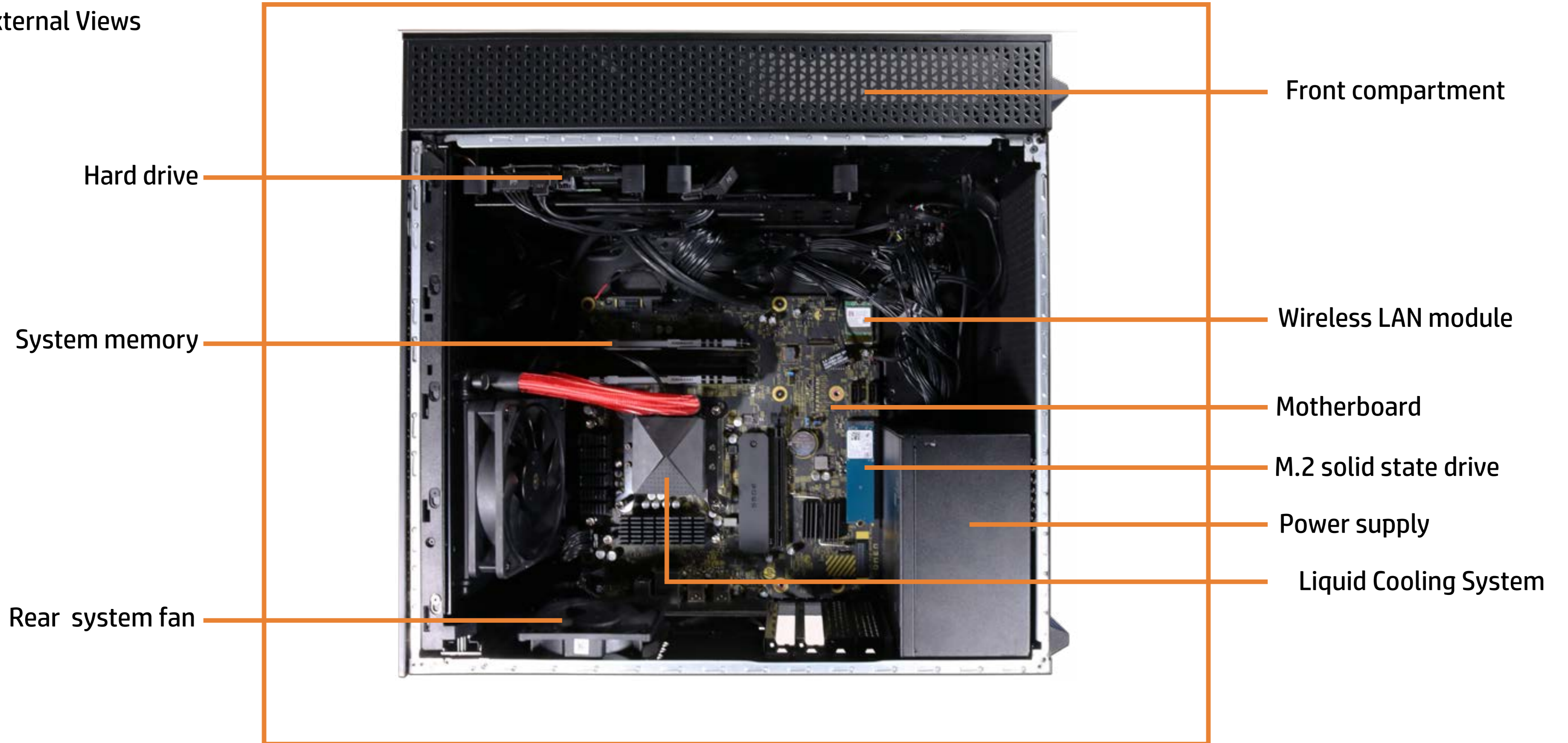
[Back to External Views](#)



[Go to Parts List](#)

Internal View

[Back to External Views](#)



[Go to Parts List](#)

Bottom View

[Back to External Views](#)



[Go to Parts List](#)

Hard Drive

System Memory
M.2 Solid State Drive
Graphics Card
Graphics Card Holder
Wireless LAN Module
Lighting Control Module
Rear System Fan
Liquid Cooling System
CPU
Side Panel
Power Supply
LED Lighting Bar
Motherboard (top)
Motherboard (bottom)
Front Bezel
Front Lighting Module
Front RGB Fan
Top Bezel
Front Compartment
Top I/O Module
Wireless LAN Antennas



Hard Drive



[Go to External Views](#)

System Memory

- Hard Drive
- System Memory**
- M.2 Solid State Drive
- Graphics Card
- Graphics Card Holder
- Wireless LAN Module
- Lighting Control Module
- Rear System Fan
- Liquid Cooling System
- CPU
- Side Panel
- Power Supply
- LED Lighting Bar
- Motherboard (top)
- Motherboard (bottom)
- Front Bezel
- Front Lighting Module
- Front RGB Fan
- Top Bezel
- Front Compartment
- Top I/O Module
- Wireless LAN Antennas



[Go to External Views](#)

M.2 Solid State Drive

- Hard Drive
- System Memory
- M.2 Solid State Drive**
- Graphics Card
- Graphics Card Holder
- Wireless LAN Module
- Lighting Control Module
- Rear System Fan
- Liquid Cooling System
- CPU
- Side Panel
- Power Supply
- LED Lighting Bar
- Motherboard (top)
- Motherboard (bottom)
- Front Bezel
- Front Lighting Module
- Front RGB Fan
- Top Bezel
- Front Compartment
- Top I/O Module
- Wireless LAN Antennas



[Go to External Views](#)

Graphics Card

- Hard Drive
- System Memory
- M.2 Solid State Drive
- Graphics Card**
- Graphics Card Holder
- Wireless LAN Module
- Lighting Control Module
- Rear System Fan
- Liquid Cooling System
- CPU
- Side Panel
- Power Supply
- LED Lighting Bar
- Motherboard (top)
- Motherboard (bottom)
- Front Bezel
- Front Lighting Module
- Front RGB Fan
- Top Bezel
- Front Compartment
- Top I/O Module
- Wireless LAN Antennas



[Go to External Views](#)

Graphics Card Holder

- Hard Drive
- System Memory
- M.2 Solid State Drive
- Graphics Card
- Graphics Card Holder**
- Wireless LAN Module
- Lighting Control Module
- Rear System Fan
- Liquid Cooling System
- CPU
- Side Panel
- Power Supply
- LED Lighting Bar
- Motherboard (top)
- Motherboard (bottom)
- Front Bezel
- Front Lighting Module
- Front RGB Fan
- Top Bezel
- Front Compartment
- Top I/O Module
- Wireless LAN Antennas



[Go to External Views](#)

Wireless LAN Module

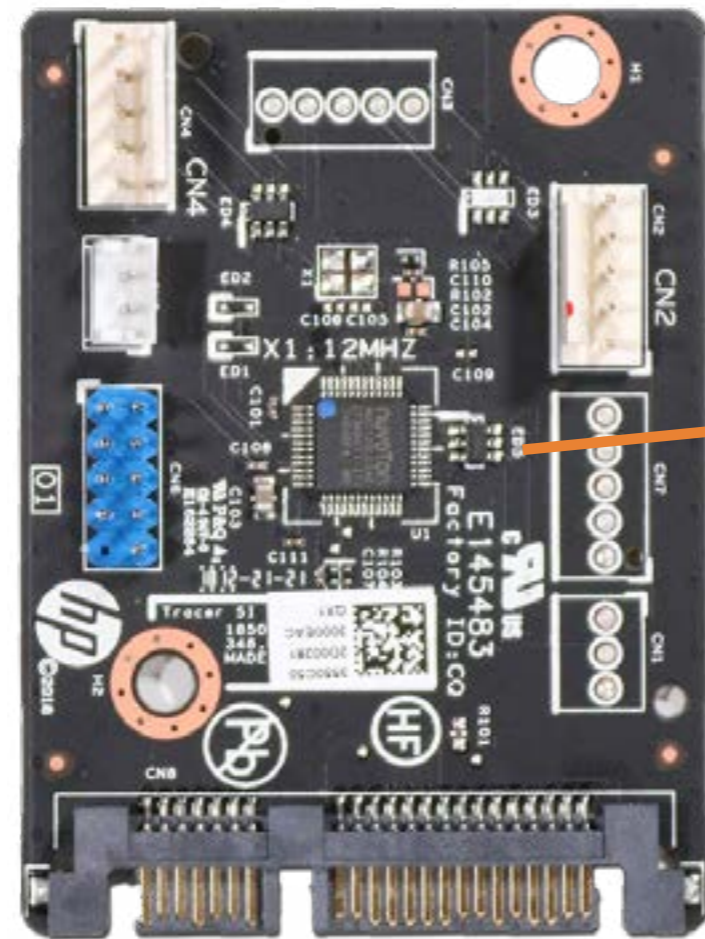
- Hard Drive
- System Memory
- M.2 Solid State Drive
- Graphics Card
- Graphics Card Holder
- Wireless LAN Module**
- Lighting Control Module
- Rear System Fan
- Liquid Cooling System
- CPU
- Side Panel
- Power Supply
- LED Lighting Bar
- Motherboard (top)
- Motherboard (bottom)
- Front Bezel
- Front Lighting Module
- Front RGB Fan
- Top Bezel
- Front Compartment
- Top I/O Module
- Wireless LAN Antennas



[Go to External Views](#)

Lighting Control Module

- Hard Drive
- System Memory
- M.2 Solid State Drive
- Graphics Card
- Graphics Card Holder
- Wireless LAN Module
- Lighting Control Module**
- Rear System Fan
- Liquid Cooling System
- CPU
- Side Panel
- Power Supply
- LED Lighting Bar
- Motherboard (top)
- Motherboard (bottom)
- Front Bezel
- Front Lighting Module
- Front RGB Fan
- Top Bezel
- Front Compartment
- Top I/O Module
- Wireless LAN Antennas



[Go to External Views](#)

Rear System Fan

- Hard Drive
- System Memory
- M.2 Solid State Drive
- Graphics Card
- Graphics Card Holder
- Wireless LAN Module
- Lighting Control Module
- Rear System Fan**
- Liquid Cooling System
- CPU
- Side Panel
- Power Supply
- LED Lighting Bar
- Motherboard (top)
- Motherboard (bottom)
- Front Bezel
- Front Lighting Module
- Front RGB Fan
- Top Bezel
- Front Compartment
- Top I/O Module
- Wireless LAN Antennas



[Go to External Views](#)

Liquid Cooling System

- Hard Drive
- System Memory
- M.2 Solid State Drive
- Graphics Card
- Graphics Card Holder
- Wireless LAN Module
- Lighting Control Module
- Rear System Fan
- Liquid Cooling System**
- CPU
- Side Panel
- Power Supply
- LED Lighting Bar
- Motherboard (top)
- Motherboard (bottom)
- Front Bezel
- Front Lighting Module
- Front RGB Fan
- Top Bezel
- Front Compartment
- Top I/O Module
- Wireless LAN Antennas



[Go to External Views](#)

- Hard Drive
- System Memory
- M.2 Solid State Drive
- Graphics Card
- Graphics Card Holder
- Wireless LAN Module
- Lighting Control Module
- Rear System Fan
- Liquid Cooling System
- CPU**
- Side Panel
- Power Supply
- LED Lighting Bar
- Motherboard (top)
- Motherboard (bottom)
- Front Bezel
- Front Lighting Module
- Front RGB Fan
- Top Bezel
- Front Compartment
- Top I/O Module
- Wireless LAN Antennas

CPU



[Go to External Views](#)

Side Panel

- Hard Drive
- System Memory
- M.2 Solid State Drive
- Graphics Card
- Graphics Card Holder
- Wireless LAN Module
- Lighting Control Module
- Rear System Fan
- Liquid Cooling System
- CPU
- Side Panel**
- Power Supply
- LED Lighting Bar
- Motherboard (top)
- Motherboard (bottom)
- Front Bezel
- Front Lighting Module
- Front RGB Fan
- Top Bezel
- Front Compartment
- Top I/O Module
- Wireless LAN Antennas



[Go to External Views](#)

Power Supply

- Hard Drive
- System Memory
- M.2 Solid State Drive
- Graphics Card
- Graphics Card Holder
- Wireless LAN Module
- Lighting Control Module
- Rear System Fan
- Liquid Cooling System
- CPU
- Side Panel
- Power Supply**
- LED Lighting Bar
- Motherboard (top)
- Motherboard (bottom)
- Front Bezel
- Front Lighting Module
- Front RGB Fan
- Top Bezel
- Front Compartment
- Top I/O Module
- Wireless LAN Antennas



[Go to External Views](#)

LED Lighting Bar

- Hard Drive
- System Memory
- M.2 Solid State Drive
- Graphics Card
- Graphics Card Holder
- Wireless LAN Module
- Lighting Control Module
- Rear System Fan
- Liquid Cooling System
- CPU
- Side Panel
- Power Supply
- LED Lighting Bar**
- Motherboard (top)
- Motherboard (bottom)
- Front Bezel
- Front Lighting Module
- Front RGB Fan
- Top Bezel
- Front Compartment
- Top I/O Module
- Wireless LAN Antennas



[Go to External Views](#)

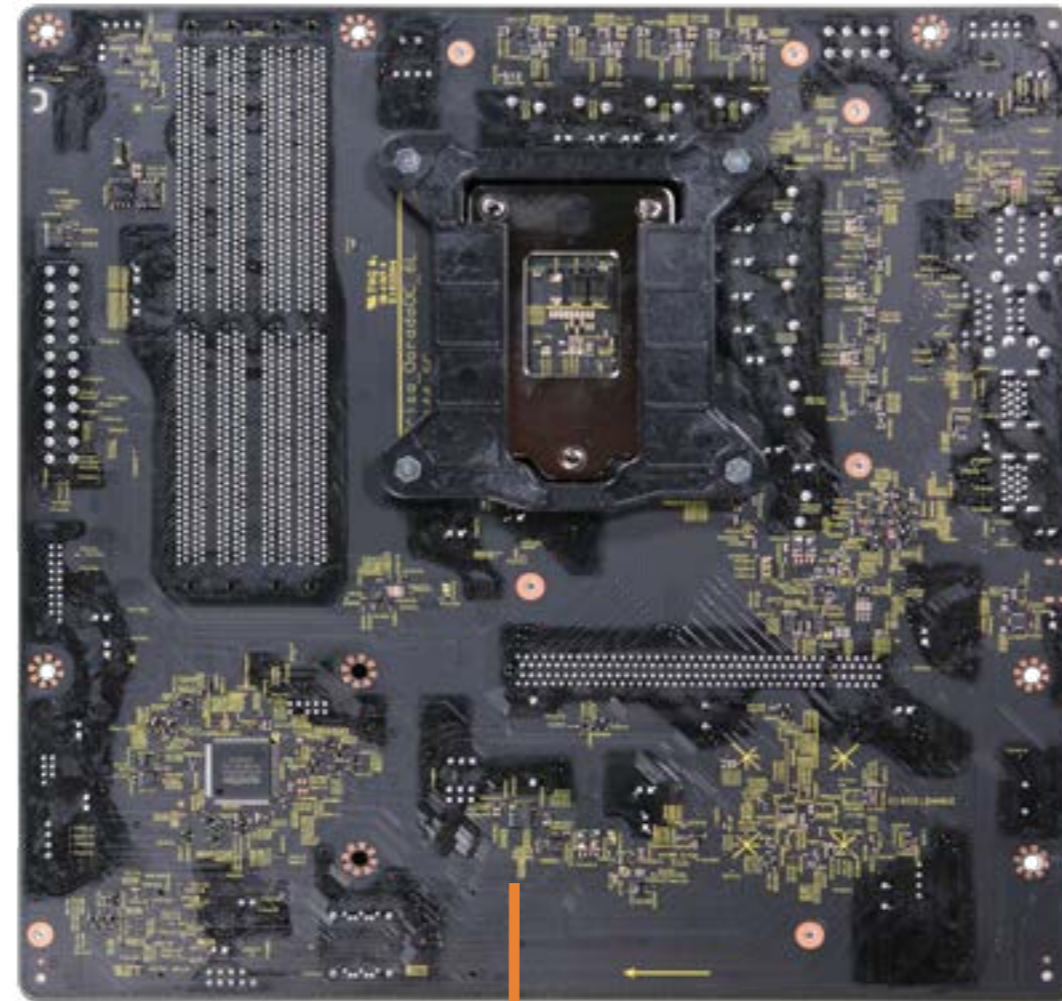
- Hard Drive
- System Memory
- M.2 Solid State Drive
- Graphics Card
- Graphics Card Holder
- Wireless LAN Module
- Lighting Control Module
- Rear System Fan
- Liquid Cooling System
- CPU
- Side Panel
- Power Supply
- LED Lighting Bar
- Motherboard (top)**
- Motherboard (bottom)
- Front Bezel
- Front Lighting Module
- Front RGB Fan
- Top Bezel
- Front Compartment
- Top I/O Module
- Wireless LAN Antennas

Motherboard (top)



[Go to External Views](#)

Motherboard (bottom)



Hard Drive

System Memory

M.2 Solid State Drive

Graphics Card

Graphics Card Holder

Wireless LAN Module

Lighting Control Module

Rear System Fan

Liquid Cooling System

CPU

Side Panel

Power Supply

LED Lighting Bar

Motherboard (top)

Motherboard (bottom)

Front Bezel

Front Lighting Module

Front RGB Fan

Top Bezel

Front Compartment

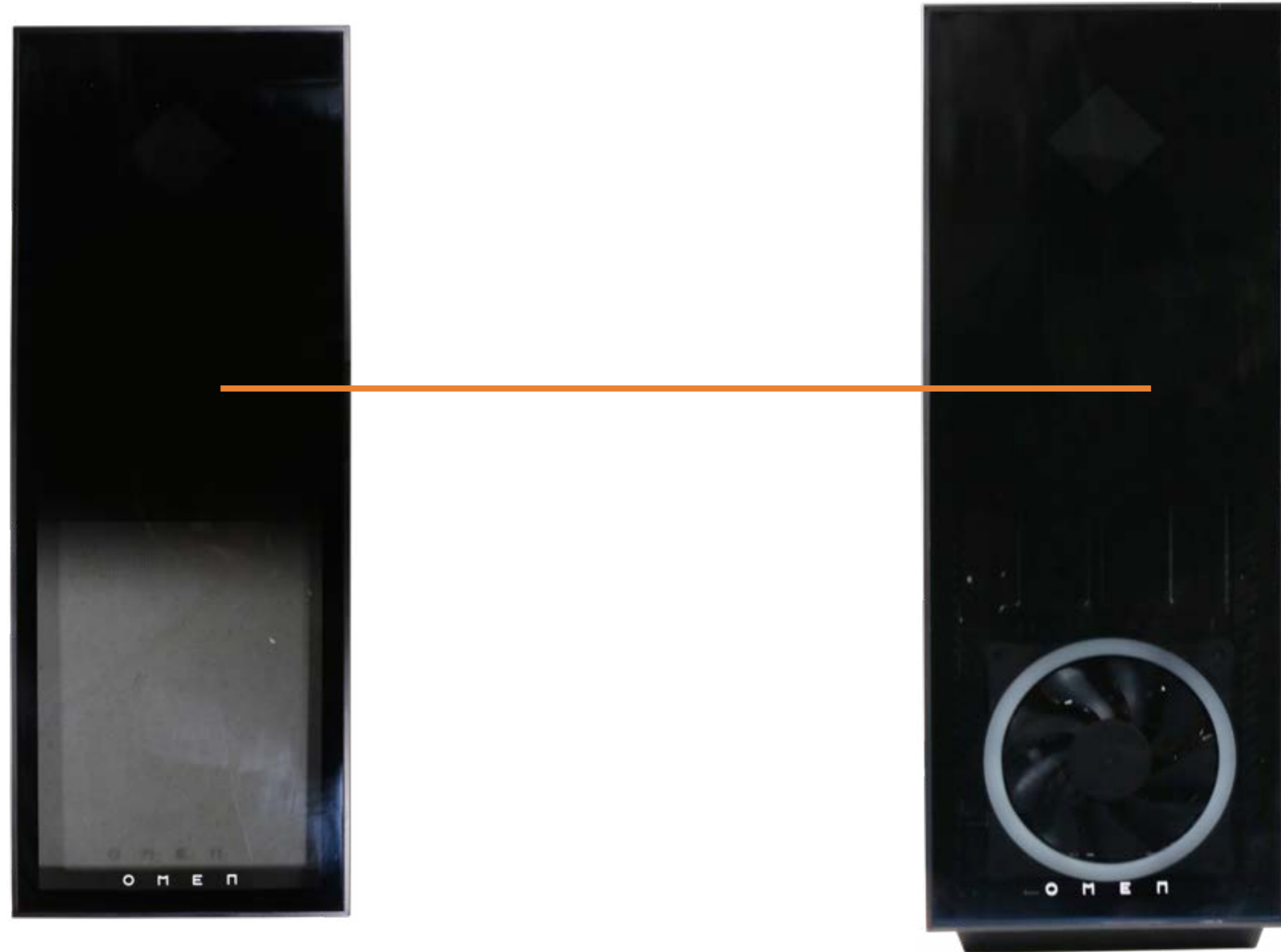
Top I/O Module

Wireless LAN Antennas

Go to External Views

Front Bezel

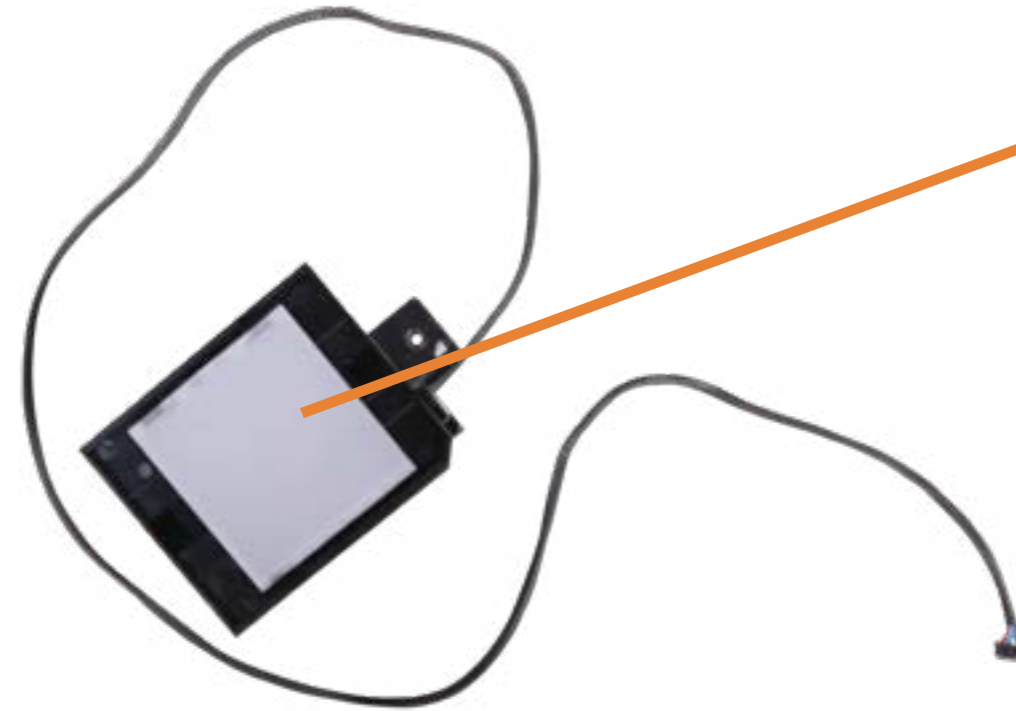
- Hard Drive
- System Memory
- M.2 Solid State Drive
- Graphics Card
- Graphics Card Holder
- Wireless LAN Module
- Lighting Control Module
- Rear System Fan
- Liquid Cooling System
- CPU
- Side Panel
- Power Supply
- LED Lighting Bar
- Motherboard (top)
- Motherboard (bottom)
- Front Bezel**
- Front Lighting Module
- Front RGB Fan
- Top Bezel
- Front Compartment
- Top I/O Module
- Wireless LAN Antennas



[Go to External Views](#)

Front Lighting Module

- Hard Drive
- System Memory
- M.2 Solid State Drive
- Graphics Card
- Graphics Card Holder
- Wireless LAN Module
- Lighting Control Module
- Rear System Fan
- Liquid Cooling System
- CPU
- Side Panel
- Power Supply
- LED Lighting Bar
- Motherboard (top)
- Motherboard (bottom)
- Front Bezel
- Front Lighting Module**
- Front RGB Fan
- Top Bezel
- Front Compartment
- Top I/O Module
- Wireless LAN Antennas



[Go to External Views](#)

- Hard Drive
- System Memory
- M.2 Solid State Drive
- Graphics Card
- Graphics Card Holder
- Wireless LAN Module
- Lighting Control Module
- Rear System Fan
- Liquid Cooling System
- CPU
- Side Panel
- Power Supply
- LED Lighting Bar
- Motherboard (top)
- Motherboard (bottom)
- Front Bezel
- Front Lighting Module
- Front RGB Fan**
- Top Bezel
- Front Compartment
- Top I/O Module
- Wireless LAN Antennas

Front RGB Fan



[Go to External Views](#)

- Hard Drive
- System Memory
- M.2 Solid State Drive
- Graphics Card
- Graphics Card Holder
- Wireless LAN Module
- Lighting Control Module
- Rear System Fan
- Liquid Cooling System
- CPU
- Side Panel
- Power Supply
- LED Lighting Bar
- Motherboard (top)
- Motherboard (bottom)
- Front Bezel
- Front Lighting Module
- Front RGB Fan
- Top Bezel**
- Front Compartment
- Top I/O Module
- Wireless LAN Antennas

Top Bezel



[Go to External Views](#)

Front Compartment

- Hard Drive
- System Memory
- M.2 Solid State Drive
- Graphics Card
- Graphics Card Holder
- Wireless LAN Module
- Lighting Control Module
- Rear System Fan
- Liquid Cooling System
- CPU
- Side Panel
- Power Supply
- LED Lighting Bar
- Motherboard (top)
- Motherboard (bottom)
- Front Bezel
- Front Lighting Module
- Front RGB Fan
- Top Bezel
- Front Compartment**
- Top I/O Module
- Wireless LAN Antennas



[Go to External Views](#)

Top I/O Module

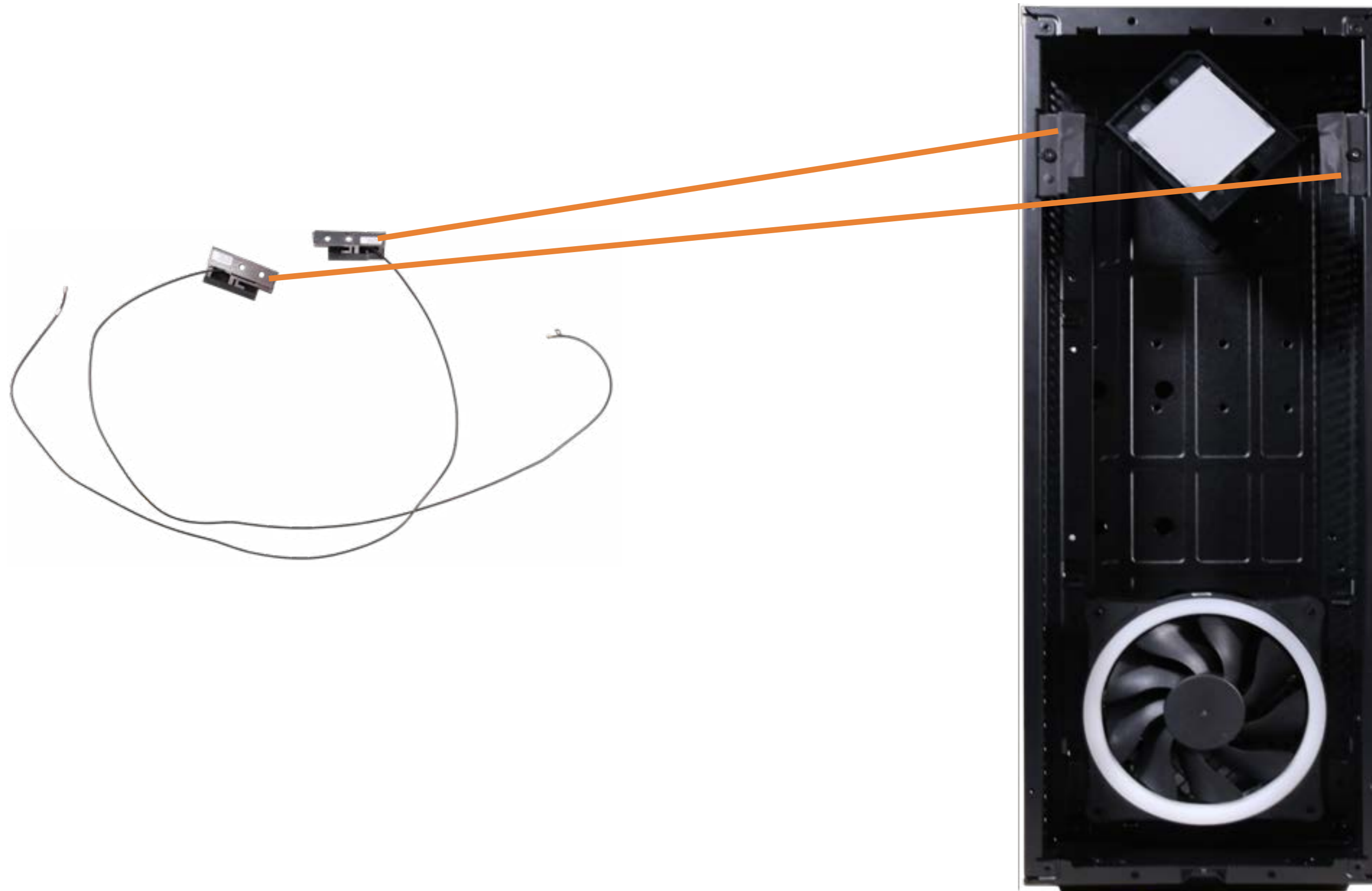
- Hard Drive
- System Memory
- M.2 Solid State Drive
- Graphics Card
- Graphics Card Holder
- Wireless LAN Module
- Lighting Control Module
- Rear System Fan
- Liquid Cooling System
- CPU
- Side Panel
- Power Supply
- LED Lighting Bar
- Motherboard (top)
- Motherboard (bottom)
- Front Bezel
- Front Lighting Module
- Front RGB Fan
- Top Bezel
- Front Compartment
- Top I/O Module**
- Wireless LAN Antennas



[Go to External Views](#)

Wireless LAN Antennas

- Hard Drive
- System Memory
- M.2 Solid State Drive
- Graphics Card
- Graphics Card Holder
- Wireless LAN Module
- Lighting Control Module
- Rear System Fan
- Liquid Cooling System
- CPU
- Side Panel
- Power Supply
- LED Lighting Bar
- Motherboard (top)
- Motherboard (bottom)
- Front Bezel
- Front Lighting Module
- Front RGB Fan
- Top Bezel
- Front Compartment
- Top I/O Module
- Wireless LAN Antennas**



[Go to External Views](#)