

Interactive Part Locator

OMEN by HP 15-ek0000 Laptop PC

Welcome to the interactive part locator for
OMEN by HP 15-ek0000 Laptop PC

Here's how to use it...

[External Views](#) (Click the link to navigate to the views)

On this page you will find large icons of each of the external views of this product. To view a specific view in greater detail, simply click that view.

[Parts List](#) (Click the link to navigate to the parts)

On this page, you will find a list of all of the replaceable parts for this product. To view a specific part and its location in the product, click the part name in the list.

That's it! On every page there is a link that brings you back to either the External Views or the Parts List, enabling you to navigate to whatever view or part you wish to review.

External Views

[Back to Welcome page](#)



Front



Left



Right



Rear



Display



Top



Internal



Bottom

[Go to Parts List](#)

Front View

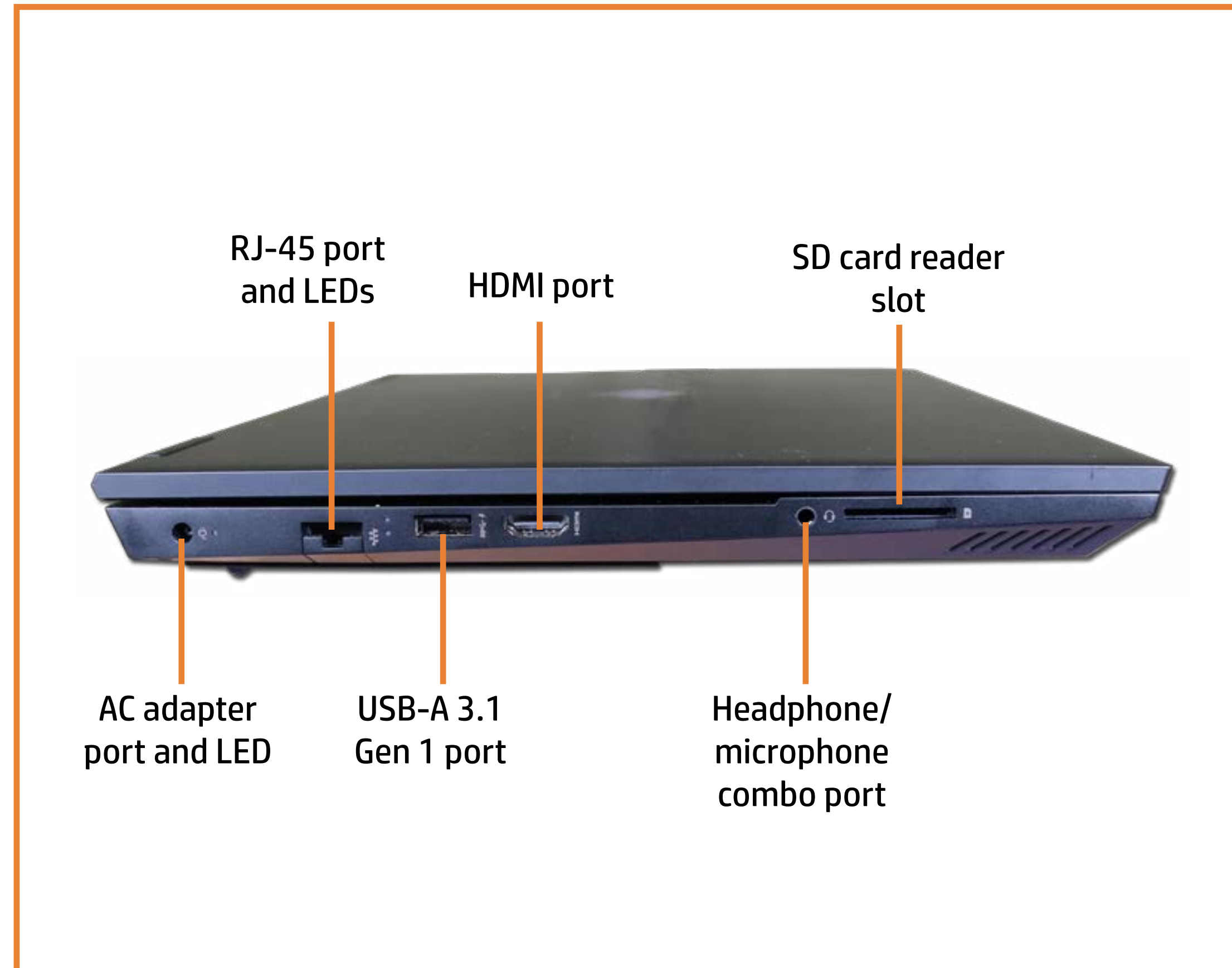
[Back to External Views](#)



[Go to Parts List](#)

Left View

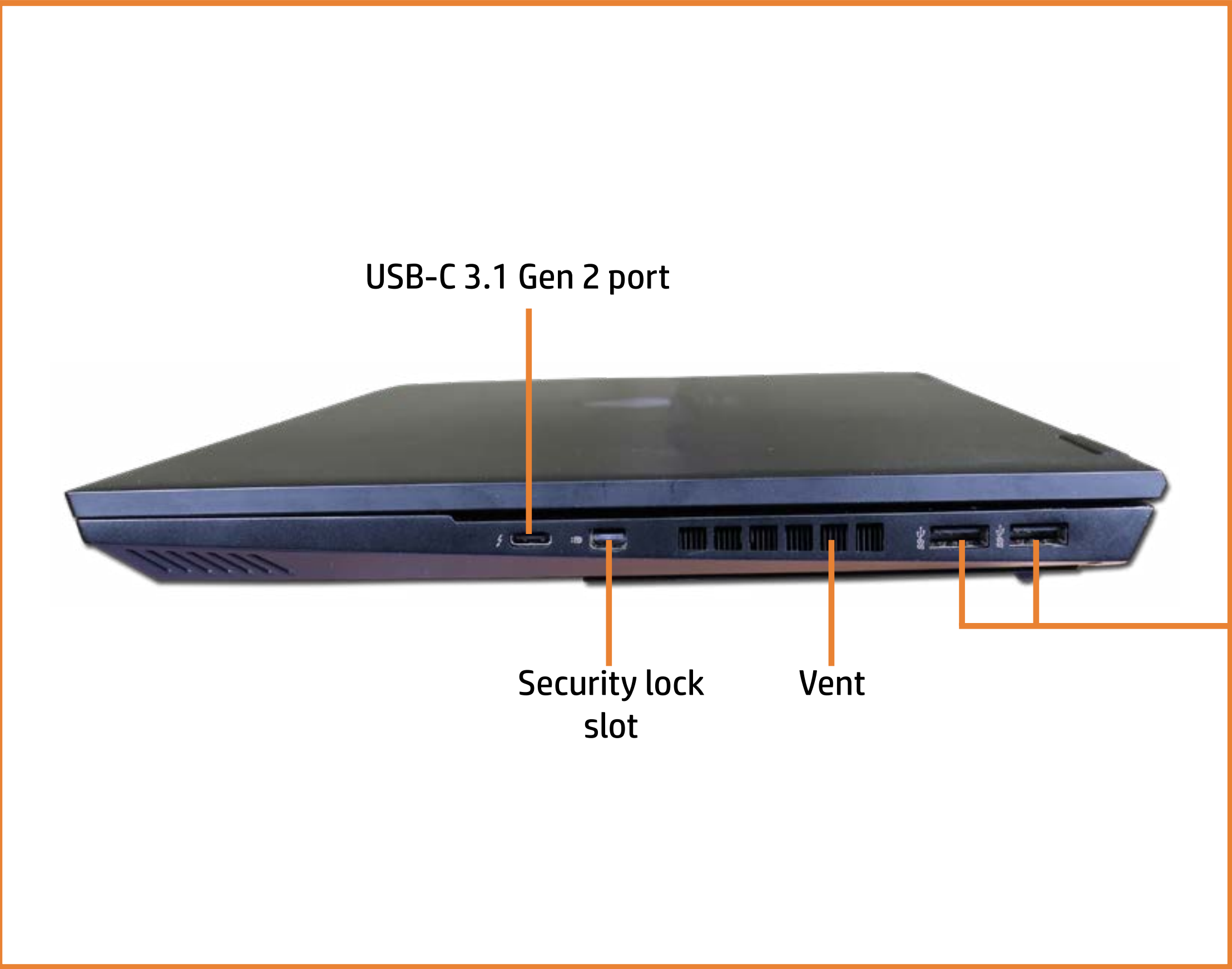
[Back to External Views](#)



[Go to Parts List](#)

Right View

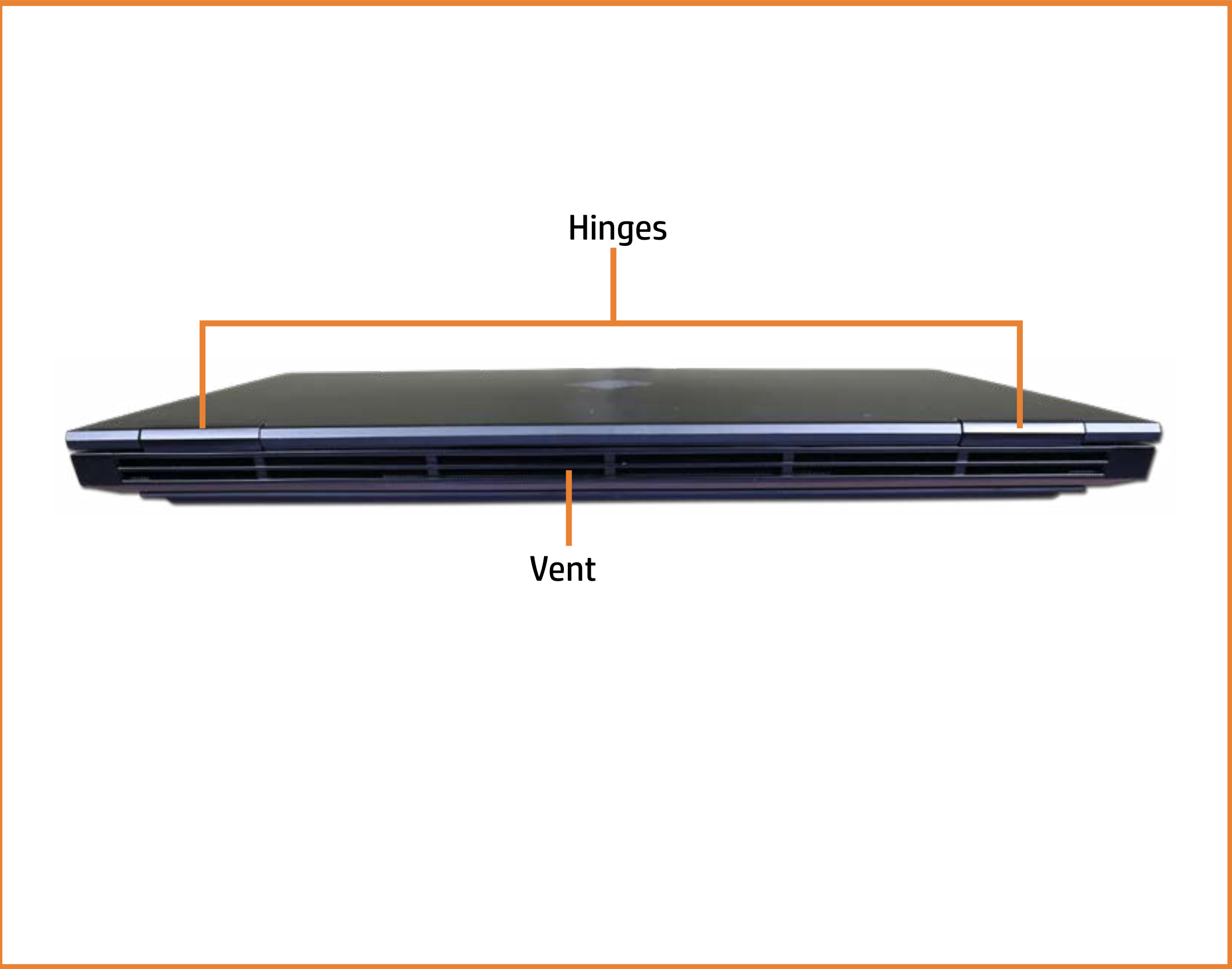
[Back to External Views](#)



[Go to Parts List](#)

Rear View

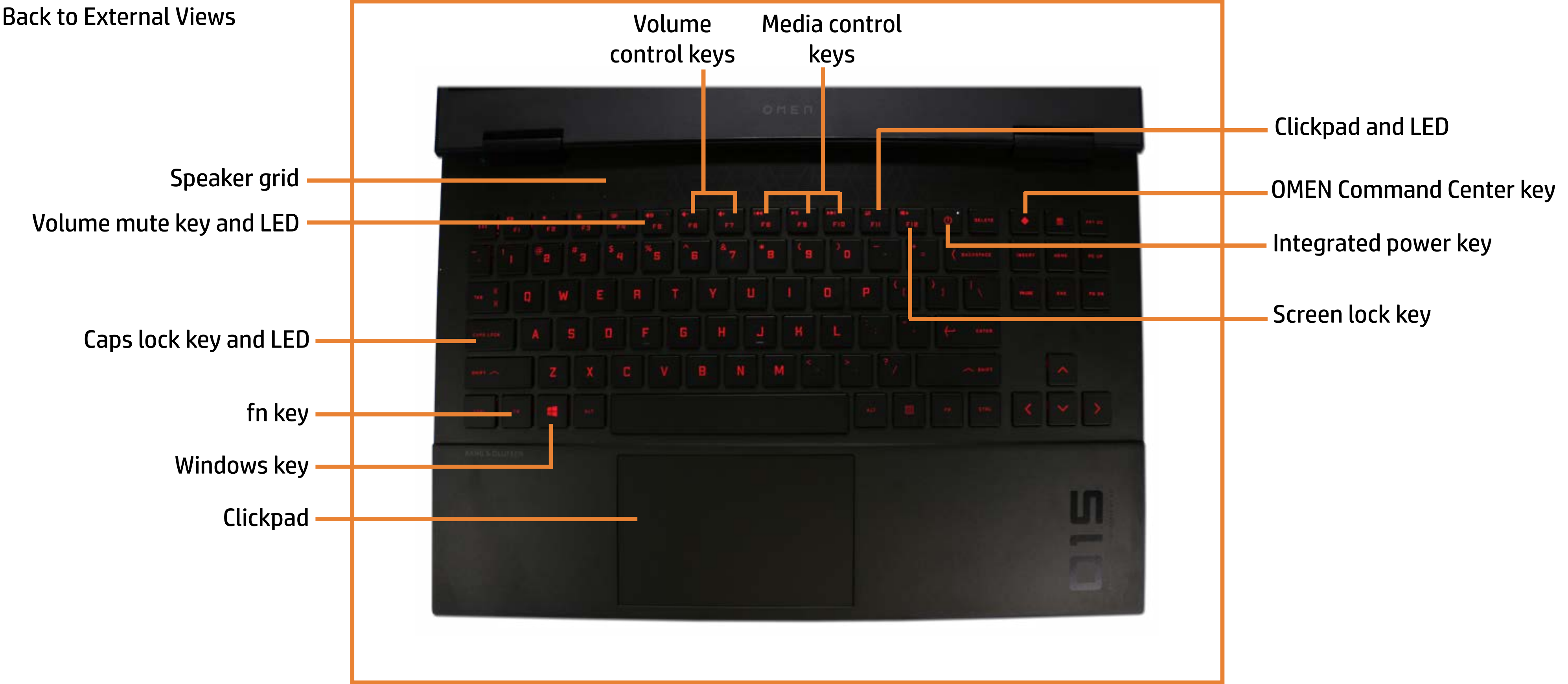
[Back to External Views](#)



[Go to Parts List](#)

Top View

[Back to External Views](#)



[Go to Parts List](#)

Internal View

[Back to External Views](#)

USB board

Heat sink

Right fan

System board

M.2 Solid state drive

Right speaker

DC-in connector

Left fan

Memory module(s)

M.2 solid state drive

Battery



[Go to Parts List](#)

Bottom View

[Back to External Views](#)

Vent

Rubber foot

Rubber foot

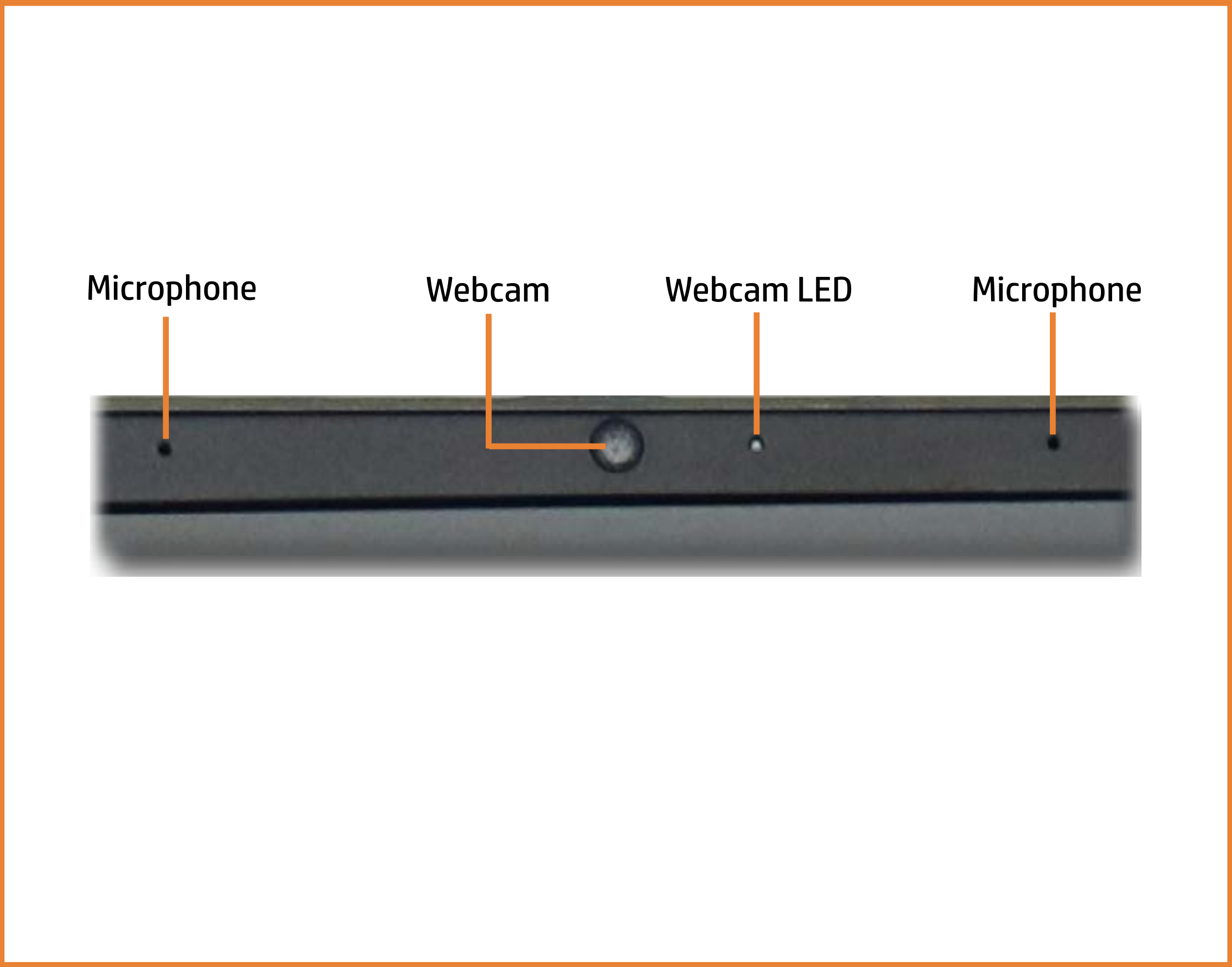
RJ-45 bracket



[Go to Parts List](#)

Display View

[Back to External Views](#)



[Go to Parts List](#)

Base Enclosure

- M.2 Solid State Drive(s)
- Battery
- Memory Module(s)
- Left Speaker
- SD Card Reader Board
- Heat Sink
- DC-in Connector
- System Fans
- USB Board
- RJ-45 Bracket
- System Board (top)
- System Board (bottom)
- Right Speaker
- IR Board
- Touchpad
- Top Cover with Keyboard
- Display Bezel
- Display Panel
- Hinges
- Webcam
- LVDS Cable
- Wireless LAN Antennas

Base Enclosure

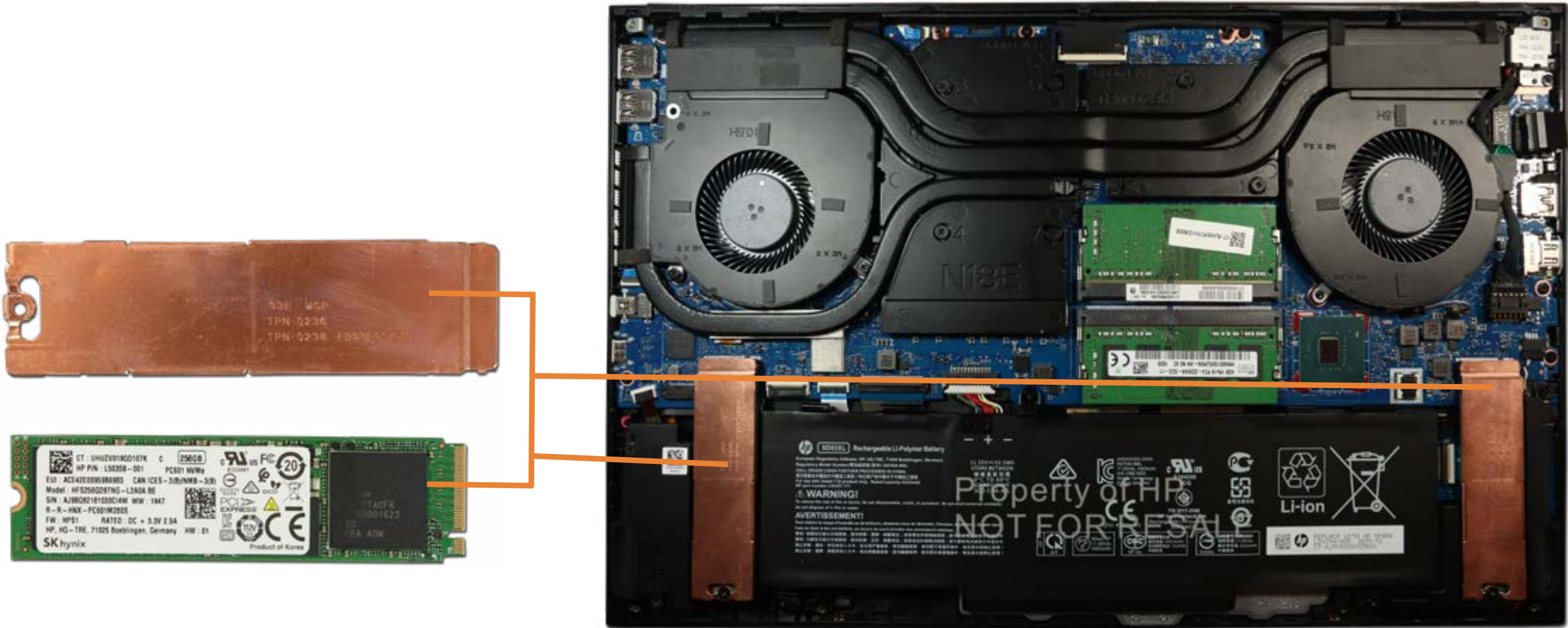


Go to External Views

Base Enclosure
M.2 Solid State Drive(s)

- Battery
- Memory Module(s)
- Left Speaker
- SD Card Reader Board
- Heat Sink
- DC-in Connector
- System Fans
- USB Board
- RJ-45 Bracket
- System Board (top)
- System Board (bottom)
- Right Speaker
- IR Board
- Touchpad
- Top Cover with Keyboard
- Display Bezel
- Display Panel
- Hinges
- Webcam
- LVDS Cable
- Wireless LAN Antennas

M.2 Solid State Drive(s)



Go to External Views

Base Enclosure
M.2 Solid State Drive(s)

Battery

Memory Module(s)
Left Speaker
SD Card Reader Board
Heat Sink
DC-in Connector
System Fans
USB Board
RJ-45 Bracket
System Board (top)
System Board (bottom)
Right Speaker
IR Board
Touchpad
Top Cover with Keyboard
Display Bezel
Display Panel
Hinges
Webcam
LVDS Cable
Wireless LAN Antennas

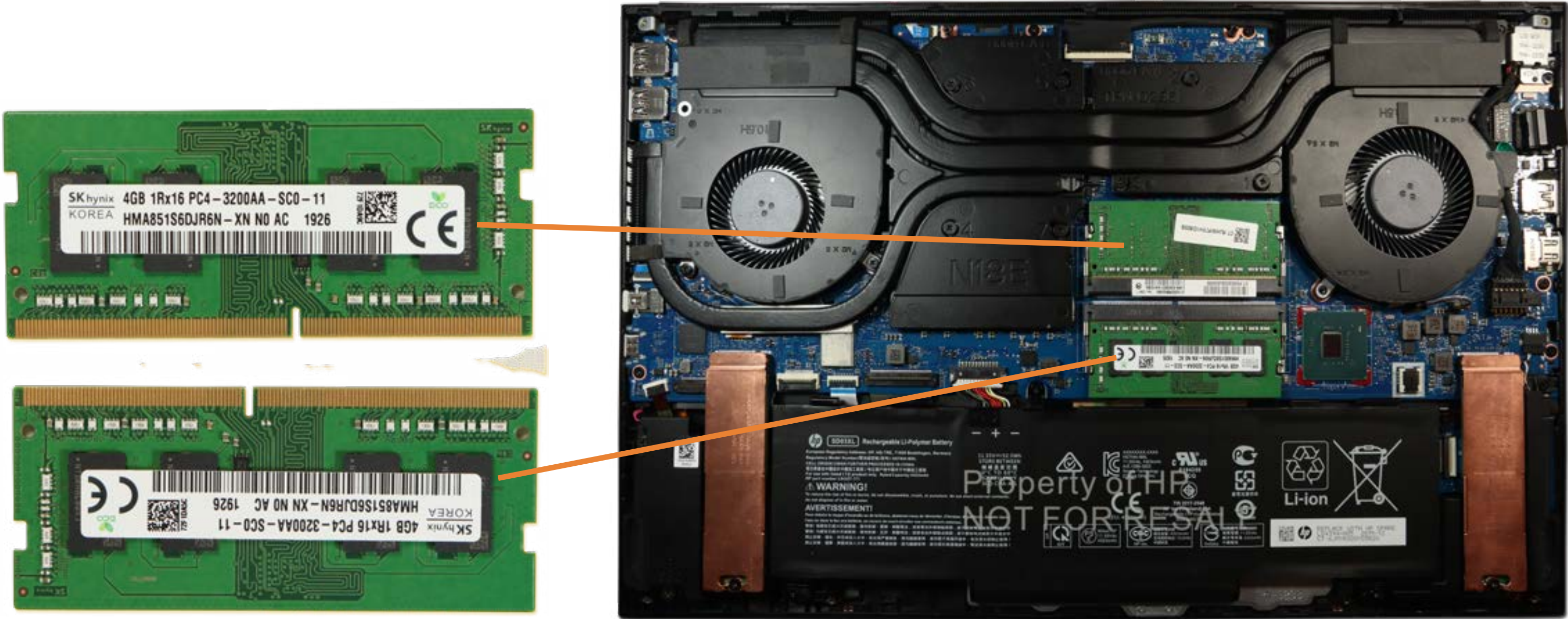
Battery



Go to External Views

- Base Enclosure
- M.2 Solid State Drive(s)
- Battery
- Memory Module(s)
- Left Speaker
- SD Card Reader Board
- Heat Sink
- DC-in Connector
- System Fans
- USB Board
- RJ-45 Bracket
- System Board (top)
- System Board (bottom)
- Right Speaker
- IR Board
- Touchpad
- Top Cover with Keyboard
- Display Bezel
- Display Panel
- Hinges
- Webcam
- LVDS Cable
- Wireless LAN Antennas

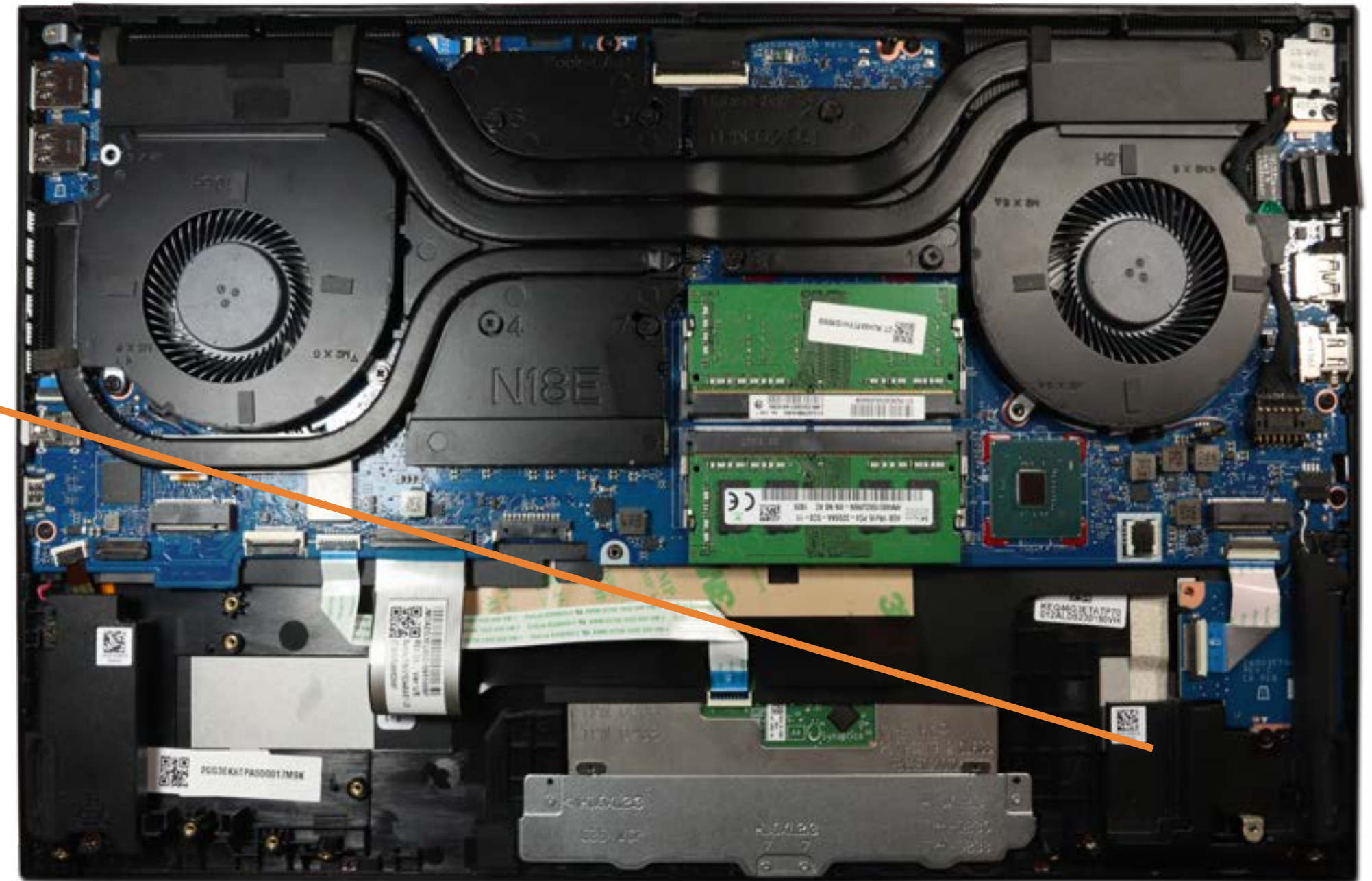
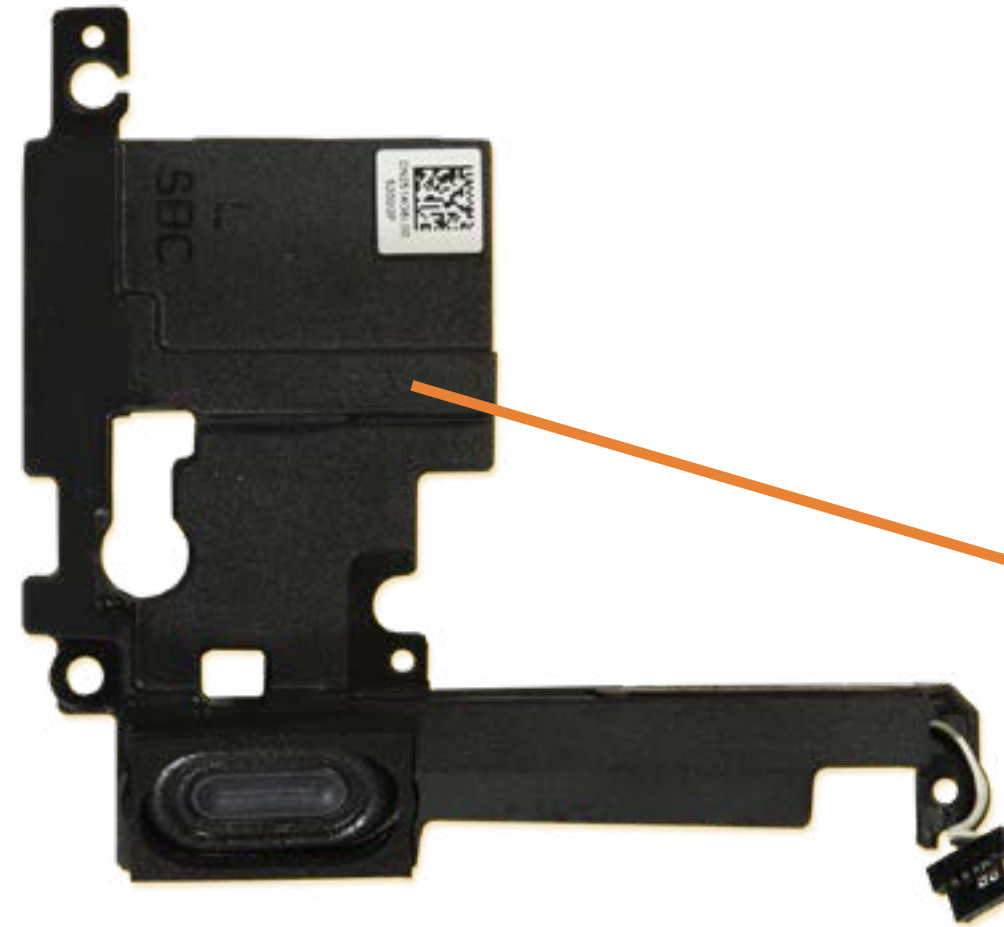
Memory Module(s)



Go to External Views

Base Enclosure
M.2 Solid State Drive(s)
Battery
Memory Module(s)
Left Speaker
SD Card Reader Board
Heat Sink
DC-in Connector
System Fans
USB Board
RJ-45 Bracket
System Board (top)
System Board (bottom)
Right Speaker
IR Board
Touchpad
Top Cover with Keyboard
Display Bezel
Display Panel
Hinges
Webcam
LVDS Cable
Wireless LAN Antennas

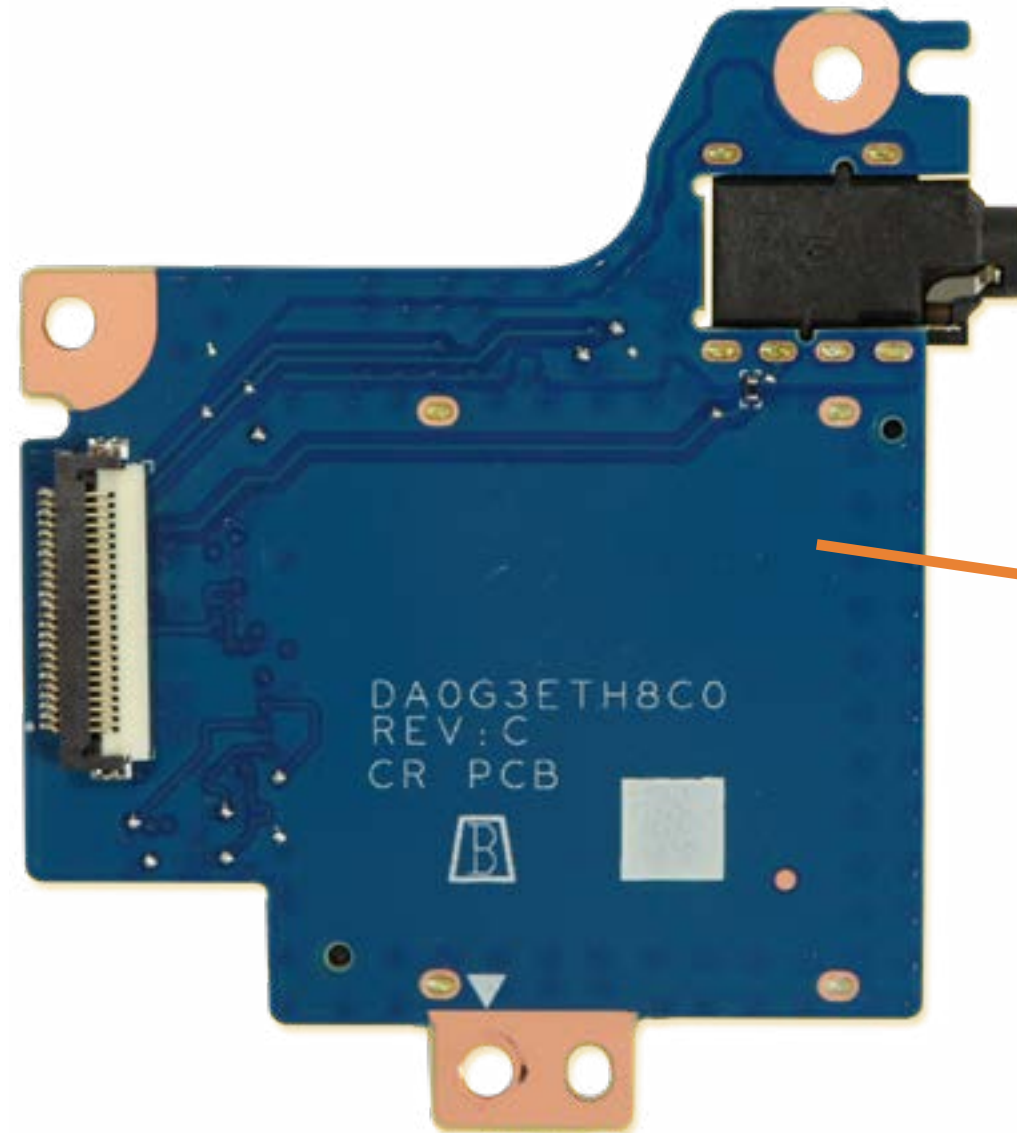
Left Speaker



[Go to External Views](#)

Base Enclosure
M.2 Solid State Drive(s)
Battery
Memory Module(s)
Left Speaker
SD Card Reader Board
Heat Sink
DC-in Connector
System Fans
USB Board
RJ-45 Bracket
System Board (top)
System Board (bottom)
Right Speaker
IR Board
Touchpad
Top Cover with Keyboard
Display Bezel
Display Panel
Hinges
Webcam
LVDS Cable
Wireless LAN Antennas

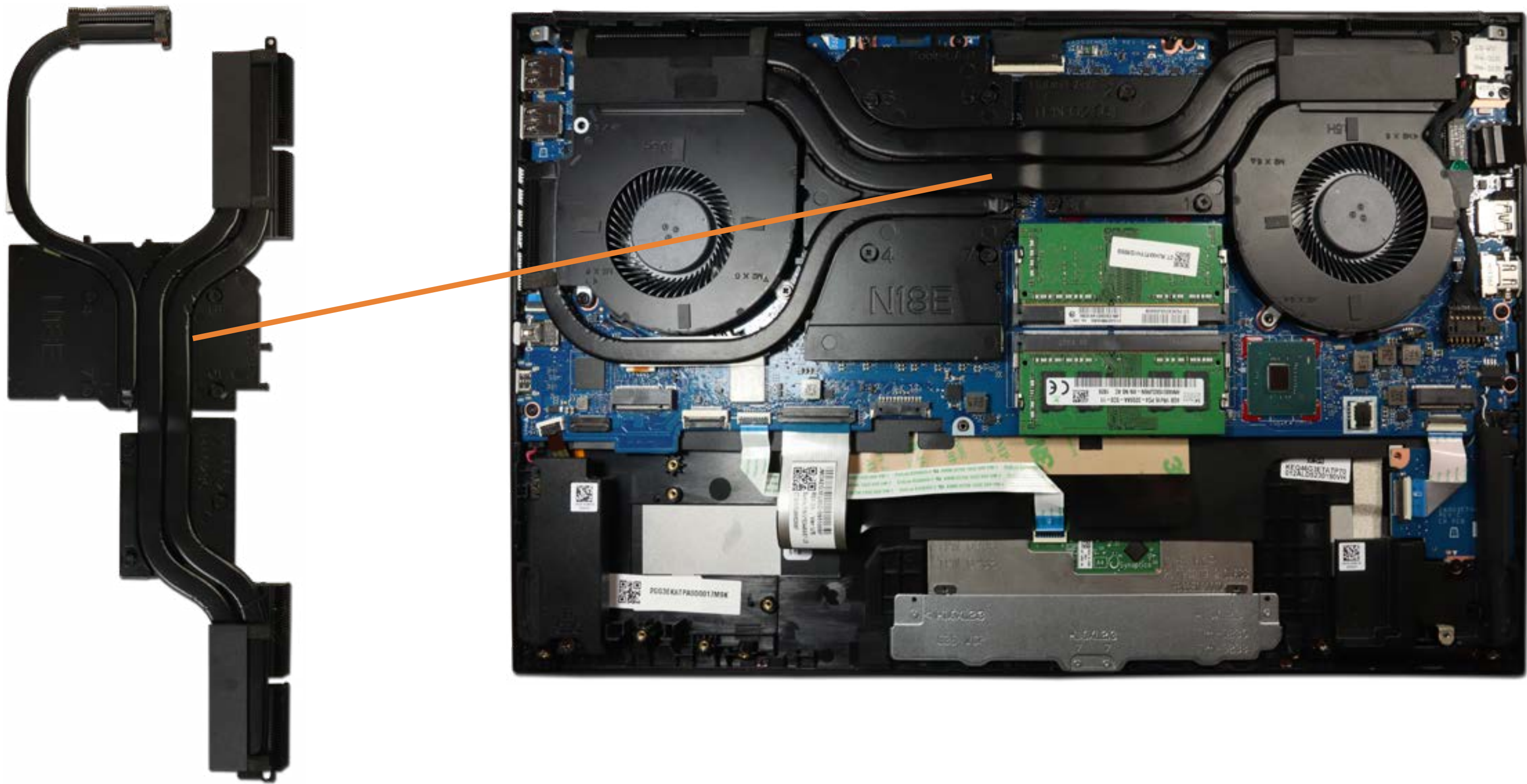
SD Card Reader Board



[Go to External Views](#)

- Base Enclosure
- M.2 Solid State Drive(s)
- Battery
- Memory Module(s)
- Left Speaker
- SD Card Reader Board
- Heat Sink
- DC-in Connector
- System Fans
- USB Board
- RJ-45 Bracket
- System Board (top)
- System Board (bottom)
- Right Speaker
- IR Board
- Touchpad
- Top Cover with Keyboard
- Display Bezel
- Display Panel
- Hinges
- Webcam
- LVDS Cable
- Wireless LAN Antennas

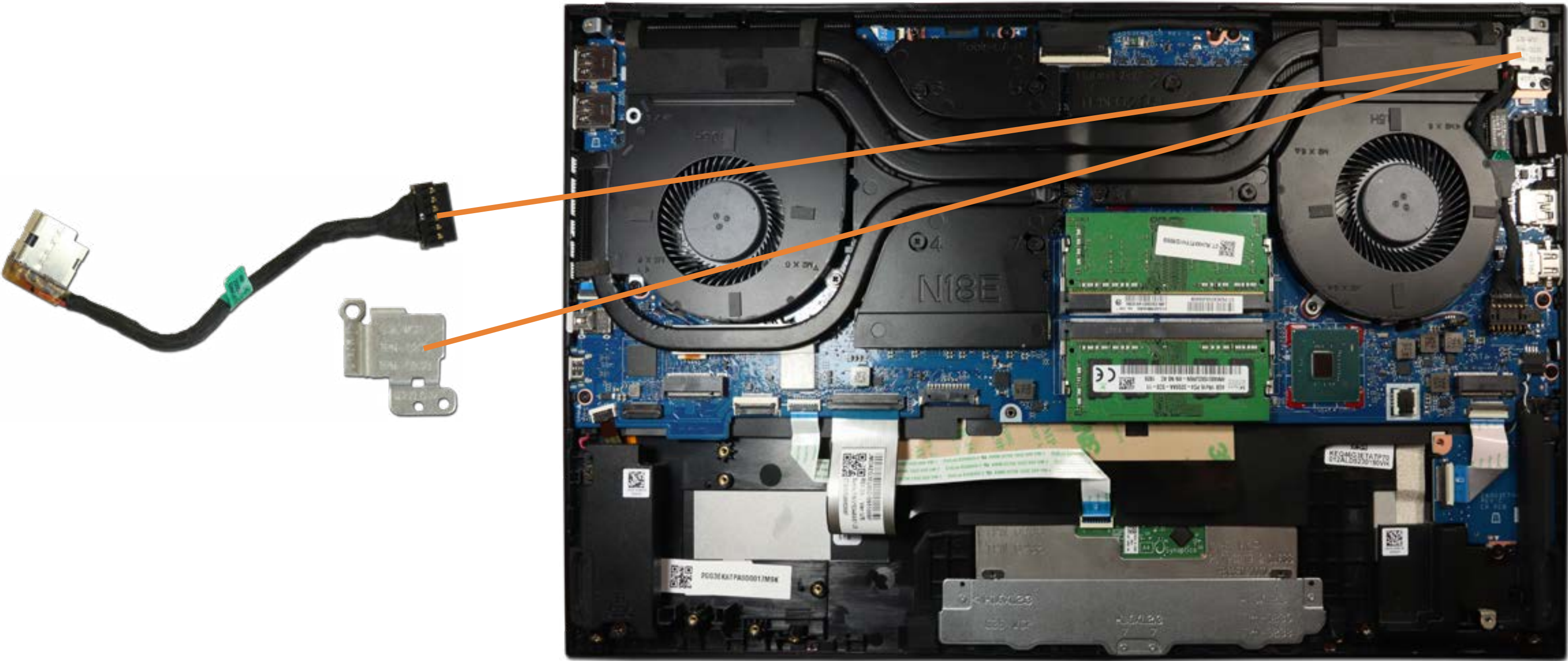
Heat Sink



[Go to External Views](#)

- Base Enclosure
- M.2 Solid State Drive(s)
- Battery
- Memory Module(s)
- Left Speaker
- SD Card Reader Board
- Heat Sink
- DC-in Connector**
- System Fans
- USB Board
- RJ-45 Bracket
- System Board (top)
- System Board (bottom)
- Right Speaker
- IR Board
- Touchpad
- Top Cover with Keyboard
- Display Bezel
- Display Panel
- Hinges
- Webcam
- LVDS Cable
- Wireless LAN Antennas

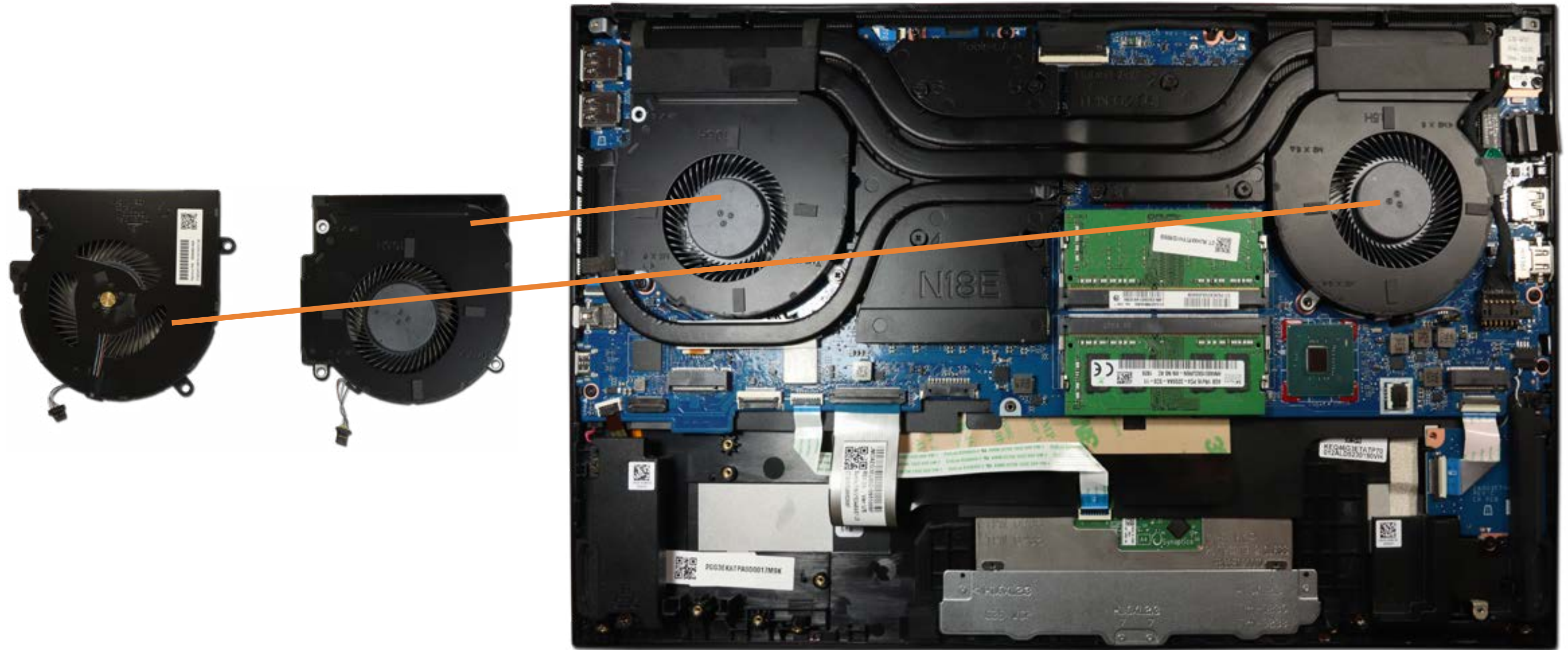
DC-in Connector



[Go to External Views](#)

System Fans

Base Enclosure
M.2 Solid State Drive(s)
Battery
Memory Module(s)
Left Speaker
SD Card Reader Board
Heat Sink
DC-in Connector
System Fans
USB Board
RJ-45 Bracket
System Board (top)
System Board (bottom)
Right Speaker
IR Board
Touchpad
Top Cover with Keyboard
Display Bezel
Display Panel
Hinges
Webcam
LVDS Cable
Wireless LAN Antennas



[Go to External Views](#)

- Base Enclosure
- M.2 Solid State Drive(s)
- Battery
- Memory Module(s)
- Left Speaker
- SD Card Reader Board
- Heat Sink
- DC-in Connector
- System Fans
- USB Board**
- RJ-45 Bracket
- System Board (top)
- System Board (bottom)
- Right Speaker
- IR Board
- Touchpad
- Top Cover with Keyboard
- Display Bezel
- Display Panel
- Hinges
- Webcam
- LVDS Cable
- Wireless LAN Antennas

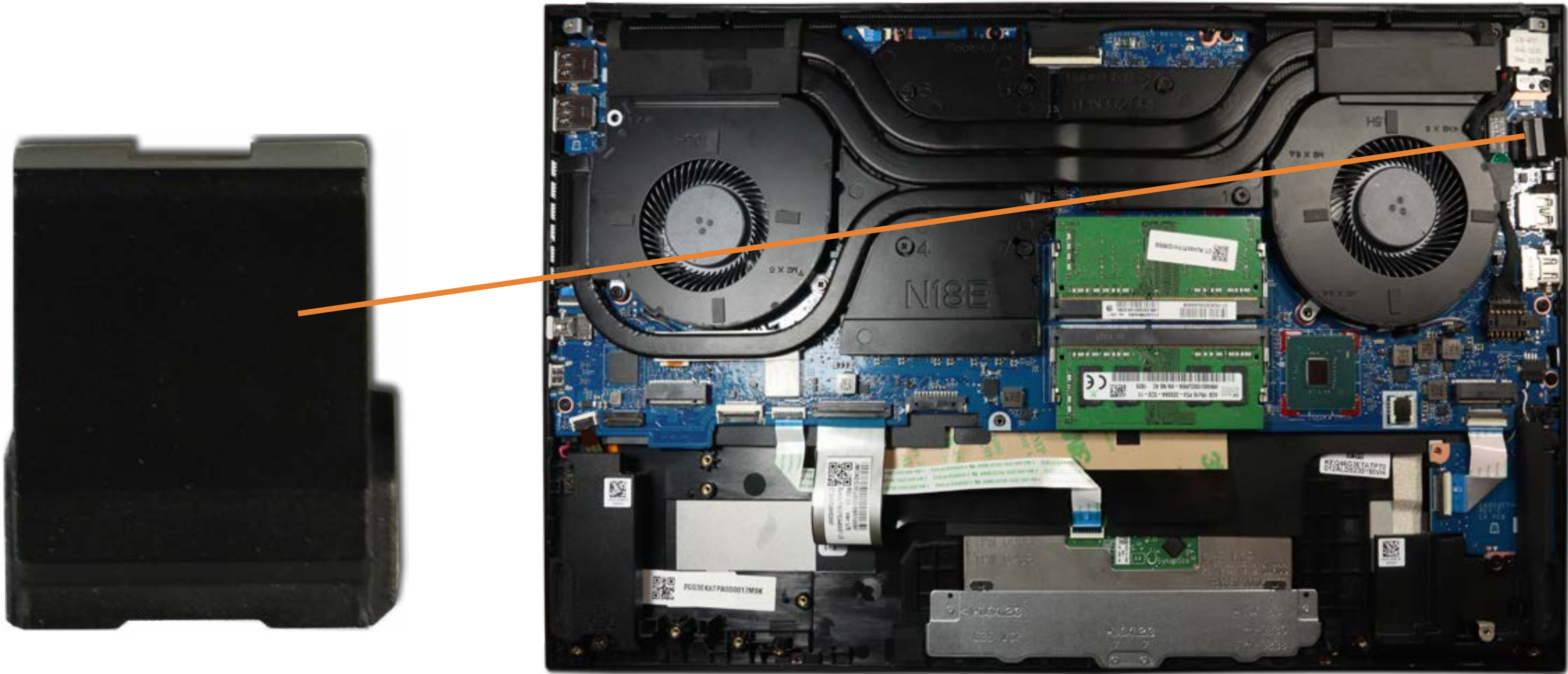
USB Board



[Go to External Views](#)

- Base Enclosure
- M.2 Solid State Drive(s)
- Battery
- Memory Module(s)
- Left Speaker
- SD Card Reader Board
- Heat Sink
- DC-in Connector
- System Fans
- USB Board
- RJ-45 Bracket**
- System Board (top)
- System Board (bottom)
- Right Speaker
- IR Board
- Touchpad
- Top Cover with Keyboard
- Display Bezel
- Display Panel
- Hinges
- Webcam
- LVDS Cable
- Wireless LAN Antennas

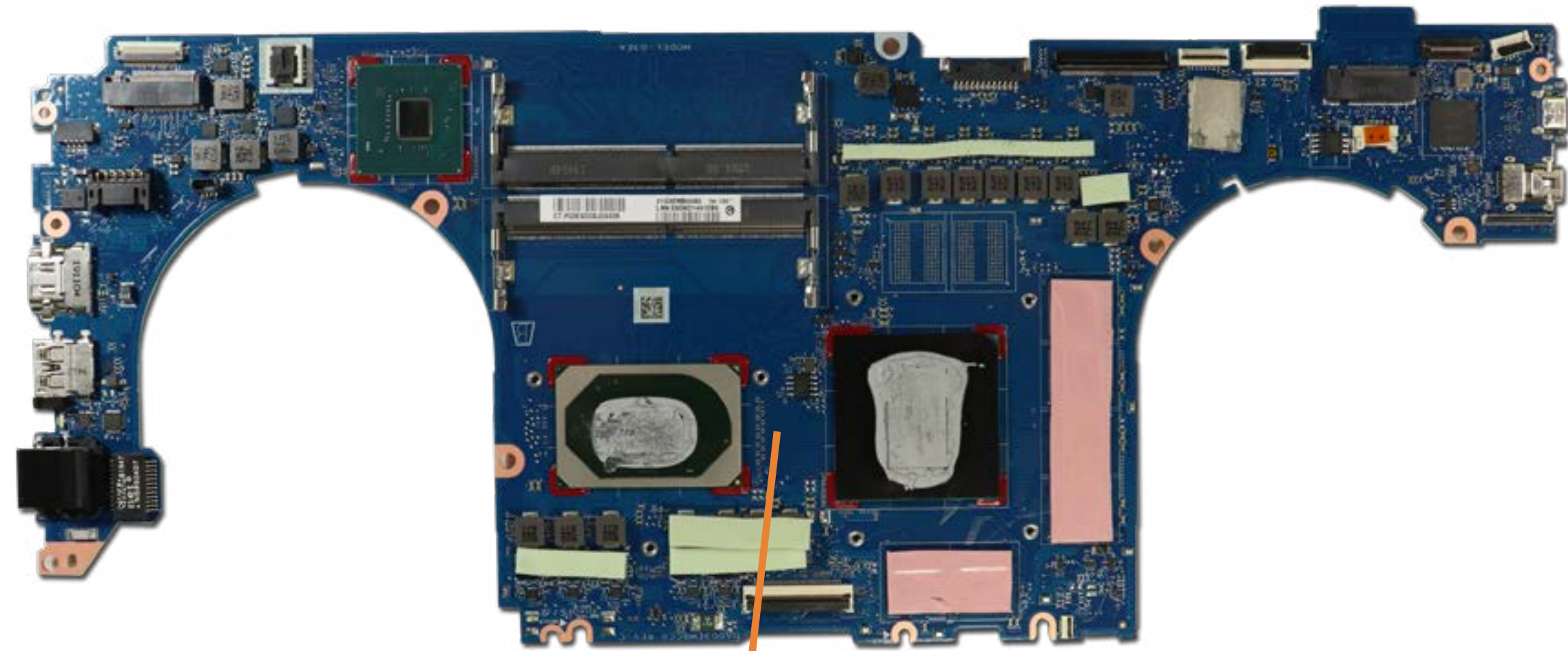
RJ-45 Bracket



[Go to External Views](#)

Base Enclosure
M.2 Solid State Drive(s)
Battery
Memory Module(s)
Left Speaker
SD Card Reader Board
Heat Sink
DC-in Connector
System Fans
USB Board
RJ-45 Bracket
System Board (top)
System Board (bottom)
Right Speaker
IR Board
Touchpad
Top Cover with Keyboard
Display Bezel
Display Panel
Hinges
Webcam
LVDS Cable
Wireless LAN Antennas

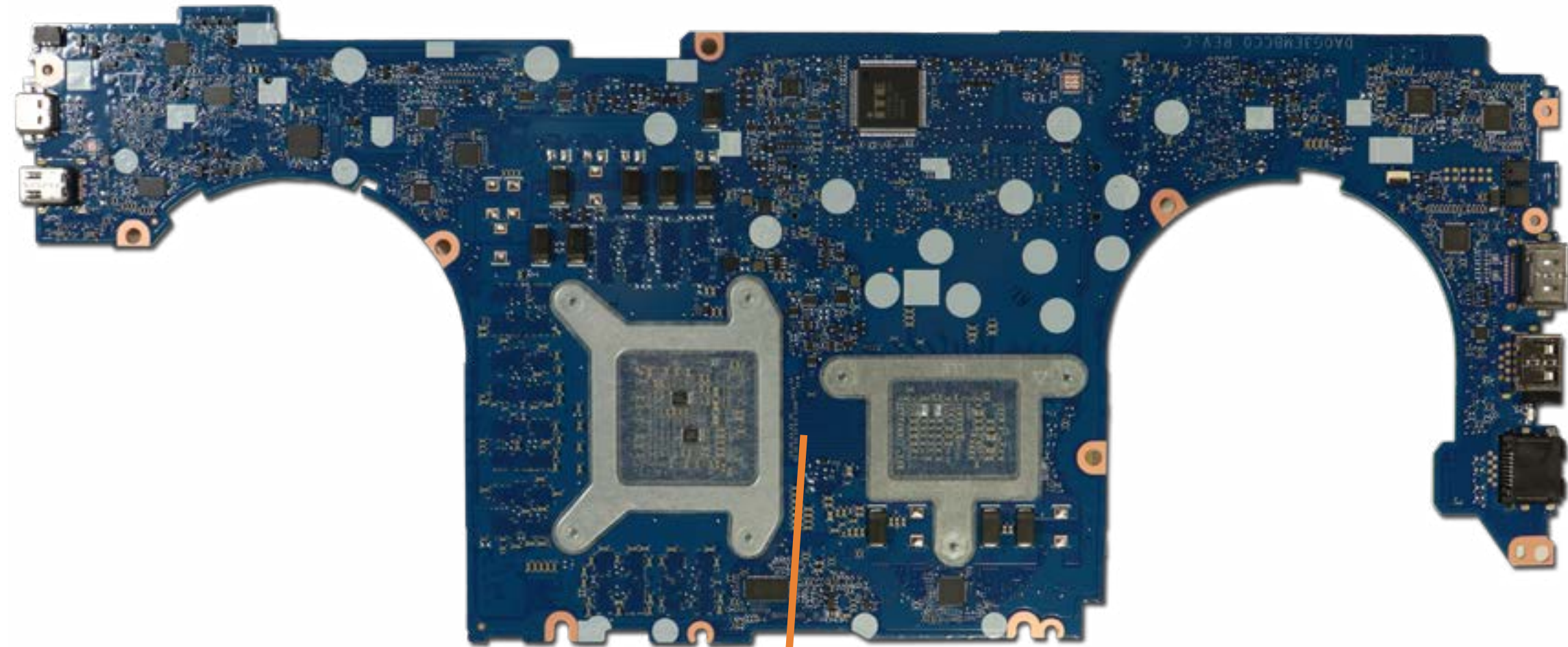
System Board (top)



[Go to External Views](#)

Base Enclosure
M.2 Solid State Drive(s)
Battery
Memory Module(s)
Left Speaker
SD Card Reader Board
Heat Sink
DC-in Connector
System Fans
USB Board
RJ-45 Bracket
System Board (top)
System Board (bottom)
Right Speaker
IR Board
Touchpad
Top Cover with Keyboard
Display Bezel
Display Panel
Hinges
Webcam
LVDS Cable
Wireless LAN Antennas

System Board (bottom)



[Go to External Views](#)

- Base Enclosure
- M.2 Solid State Drive(s)
- Battery
- Memory Module(s)
- Left Speaker
- SD Card Reader Board
- Heat Sink
- DC-in Connector
- System Fans
- USB Board
- RJ-45 Bracket
- System Board (top)
- System Board (bottom)
- Right Speaker
- IR Board
- Touchpad
- Top Cover with Keyboard
- Display Bezel
- Display Panel
- Hinges
- Webcam
- LVDS Cable
- Wireless LAN Antennas

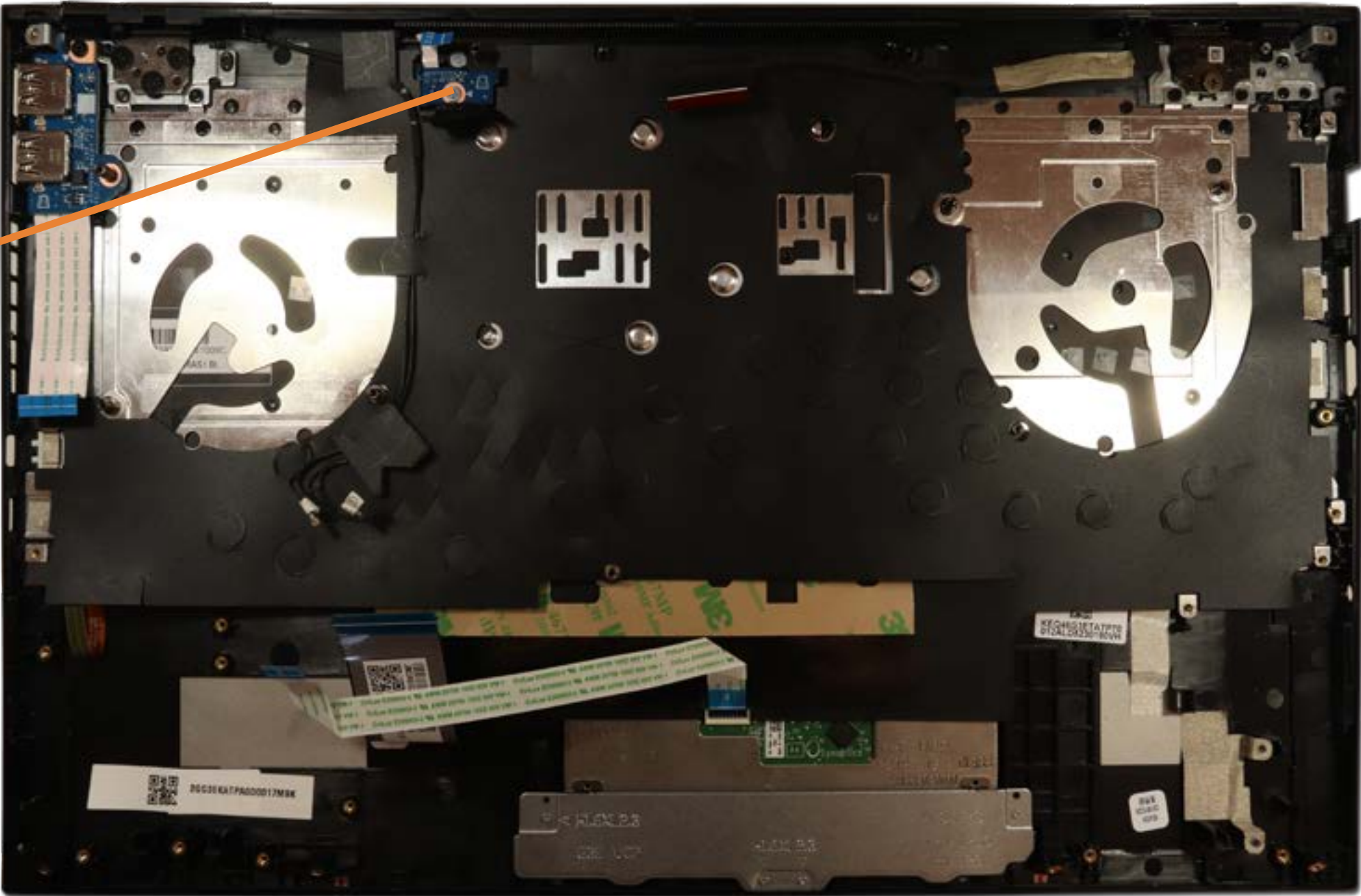
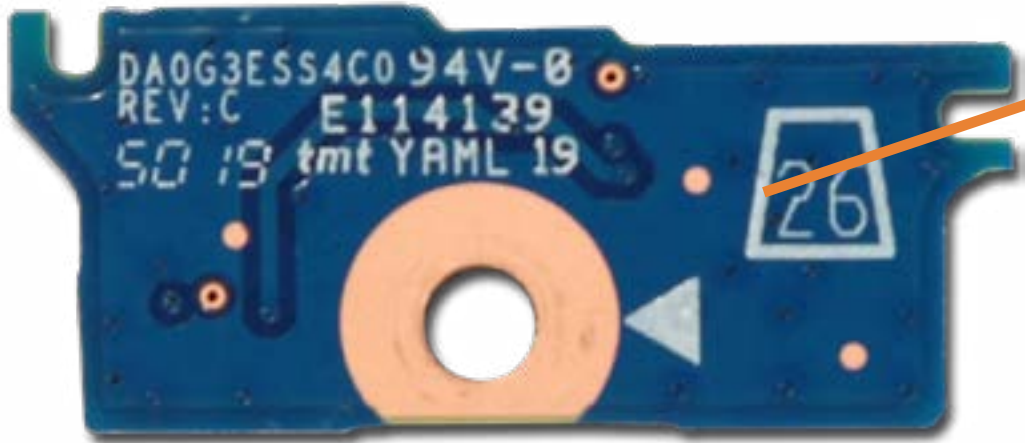
Right Speaker



Go to External Views

- Base Enclosure
- M.2 Solid State Drive(s)
- Battery
- Memory Module(s)
- Left Speaker
- SD Card Reader Board
- Heat Sink
- DC-in Connector
- System Fans
- USB Board
- RJ-45 Bracket
- System Board (top)
- System Board (bottom)
- Right Speaker
- IR Board**
- Touchpad
- Top Cover with Keyboard
- Display Bezel
- Display Panel
- Hinges
- Webcam
- LVDS Cable
- Wireless LAN Antennas

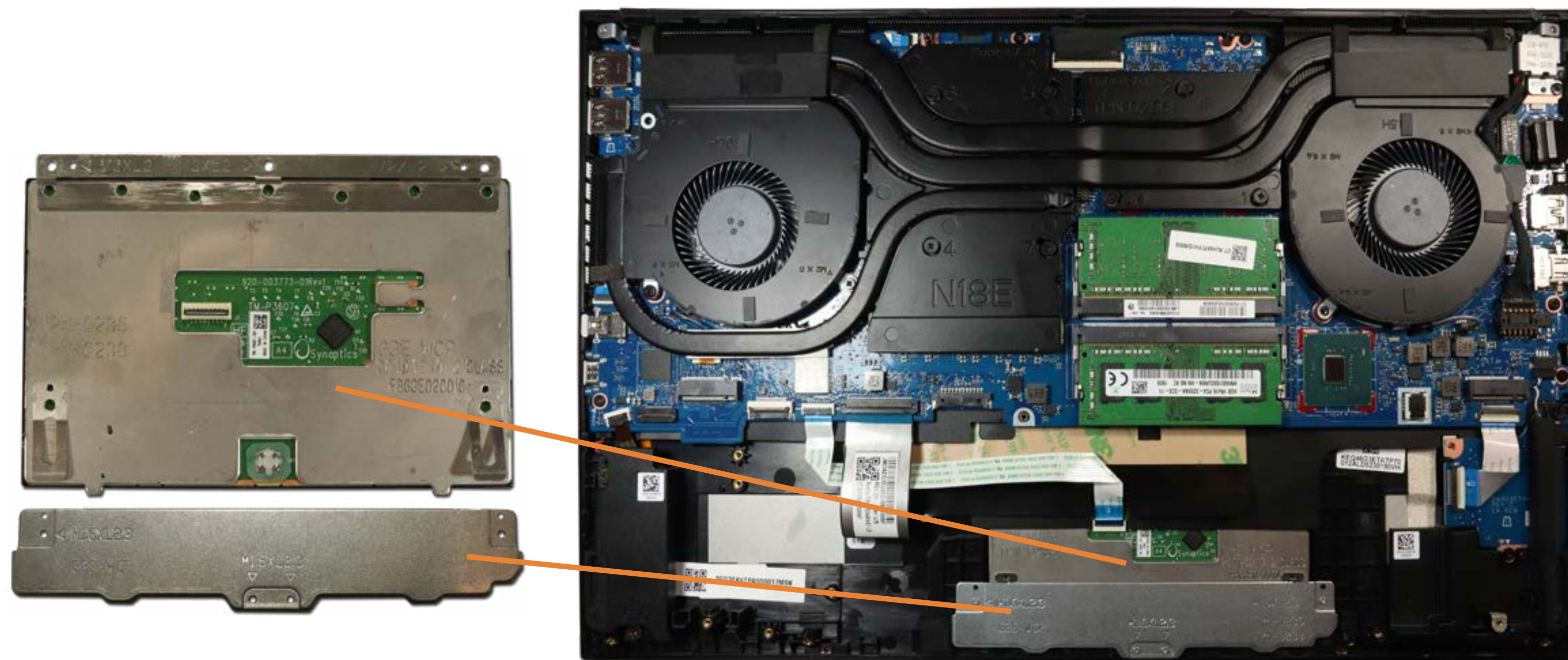
IR Board



[Go to External Views](#)

Touchpad

Base Enclosure
M.2 Solid State Drive(s)
Battery
Memory Module(s)
Left Speaker
SD Card Reader Board
Heat Sink
DC-in Connector
System Fans
USB Board
RJ-45 Bracket
System Board (top)
System Board (bottom)
Right Speaker
IR Board
Touchpad
Top Cover with Keyboard
Display Bezel
Display Panel
Hinges
Webcam
LVDS Cable
Wireless LAN Antennas



[Go to External Views](#)

- Base Enclosure
- M.2 Solid State Drive(s)
- Battery
- Memory Module(s)
- Left Speaker
- SD Card Reader Board
- Heat Sink
- DC-in Connector
- System Fans
- USB Board
- RJ-45 Bracket
- System Board (top)
- System Board (bottom)
- Right Speaker
- IR Board
- Touchpad
- Top Cover with Keyboard
- Display Bezel
- Display Panel
- Hinges
- Webcam
- LVDS Cable
- Wireless LAN Antennas

Top Cover with Keyboard



Go to External Views

- Base Enclosure
- M.2 Solid State Drive(s)
- Battery
- Memory Module(s)
- Left Speaker
- SD Card Reader Board
- Heat Sink
- DC-in Connector
- System Fans
- USB Board
- RJ-45 Bracket
- System Board (top)
- System Board (bottom)
- Right Speaker
- IR Board
- Touchpad
- Top Cover with Keyboard
- Display Bezel
- Display Panel
- Hinges
- Webcam
- LVDS Cable
- Wireless LAN Antennas

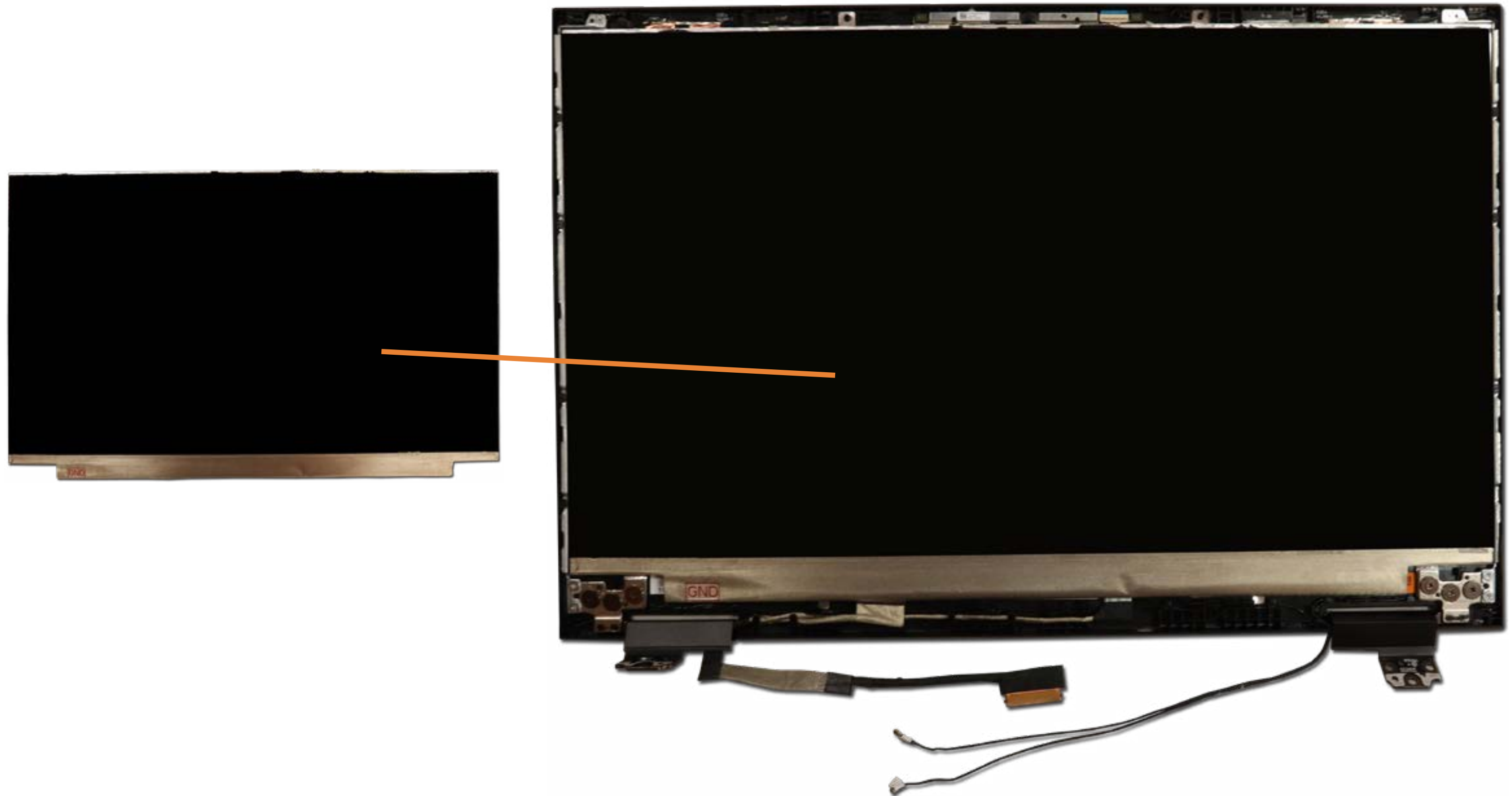
Display Bezel



[Go to External Views](#)

Base Enclosure
M.2 Solid State Drive(s)
Battery
Memory Module(s)
Left Speaker
SD Card Reader Board
Heat Sink
DC-in Connector
System Fans
USB Board
RJ-45 Bracket
System Board (top)
System Board (bottom)
Right Speaker
IR Board
Touchpad
Top Cover with Keyboard
Display Bezel
Display Panel
Hinges
Webcam
LVDS Cable
Wireless LAN Antennas

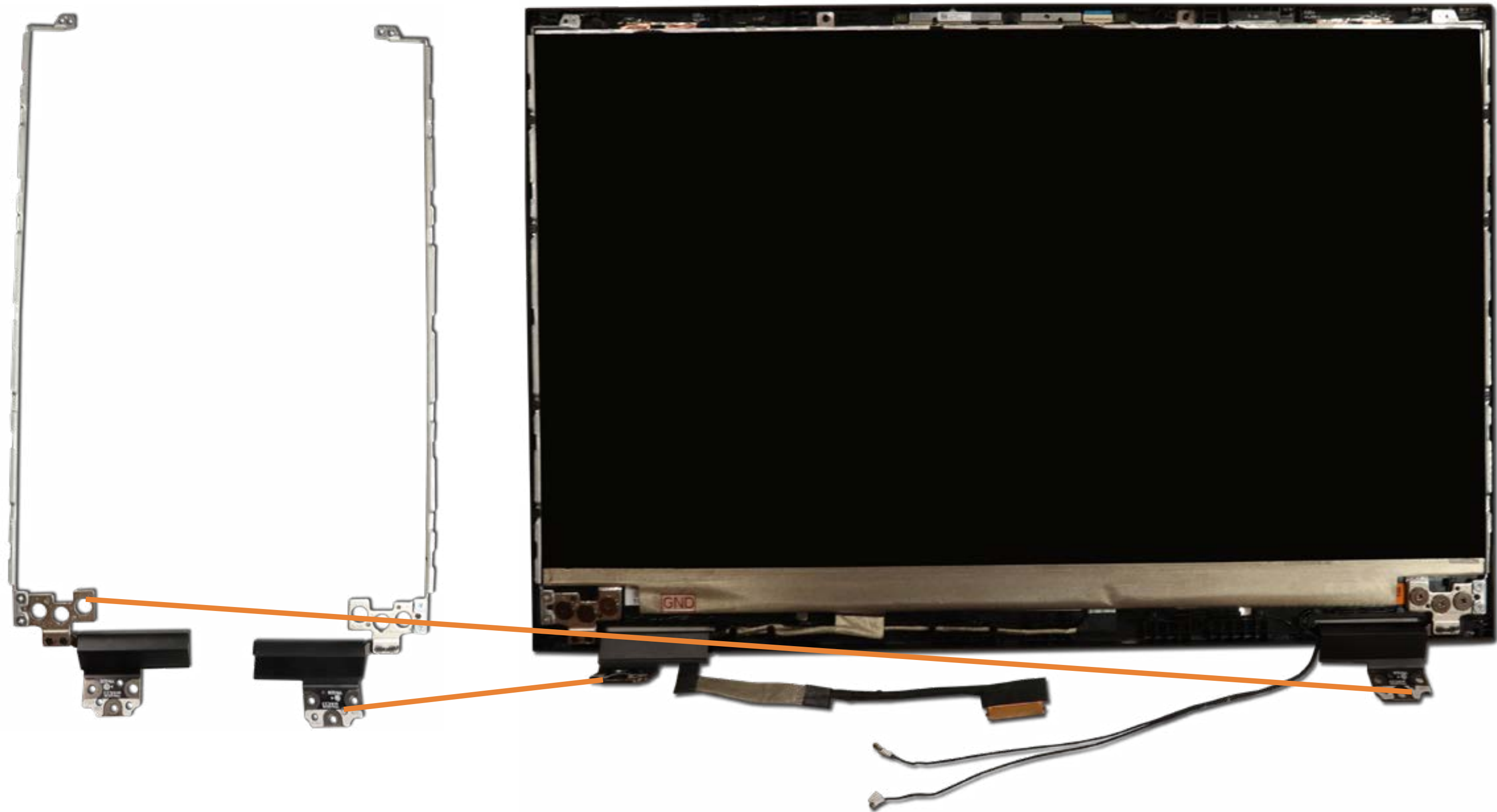
Display Panel



[Go to External Views](#)

- Base Enclosure
- M.2 Solid State Drive(s)
- Battery
- Memory Module(s)
- Left Speaker
- SD Card Reader Board
- Heat Sink
- DC-in Connector
- System Fans
- USB Board
- RJ-45 Bracket
- System Board (top)
- System Board (bottom)
- Right Speaker
- IR Board
- Touchpad
- Top Cover with Keyboard
- Display Bezel
- Display Panel
- Hinges**
- Webcam
- LVDS Cable
- Wireless LAN Antennas

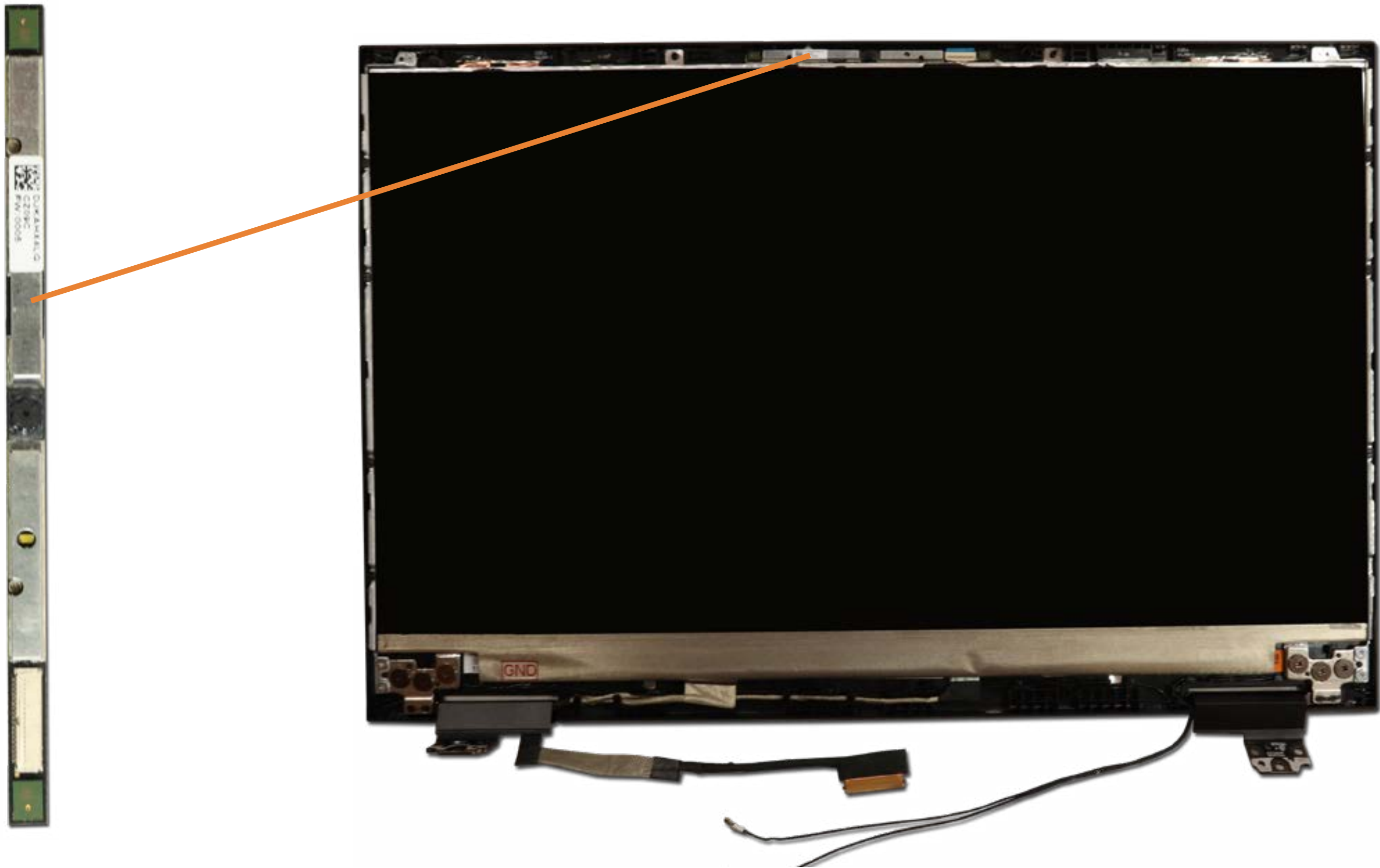
Hinges



Go to External Views

- Base Enclosure
- M.2 Solid State Drive(s)
- Battery
- Memory Module(s)
- Left Speaker
- SD Card Reader Board
- Heat Sink
- DC-in Connector
- System Fans
- USB Board
- RJ-45 Bracket
- System Board (top)
- System Board (bottom)
- Right Speaker
- IR Board
- Touchpad
- Top Cover with Keyboard
- Display Bezel
- Display Panel
- Hinges
- Webcam
- LVDS Cable
- Wireless LAN Antennas

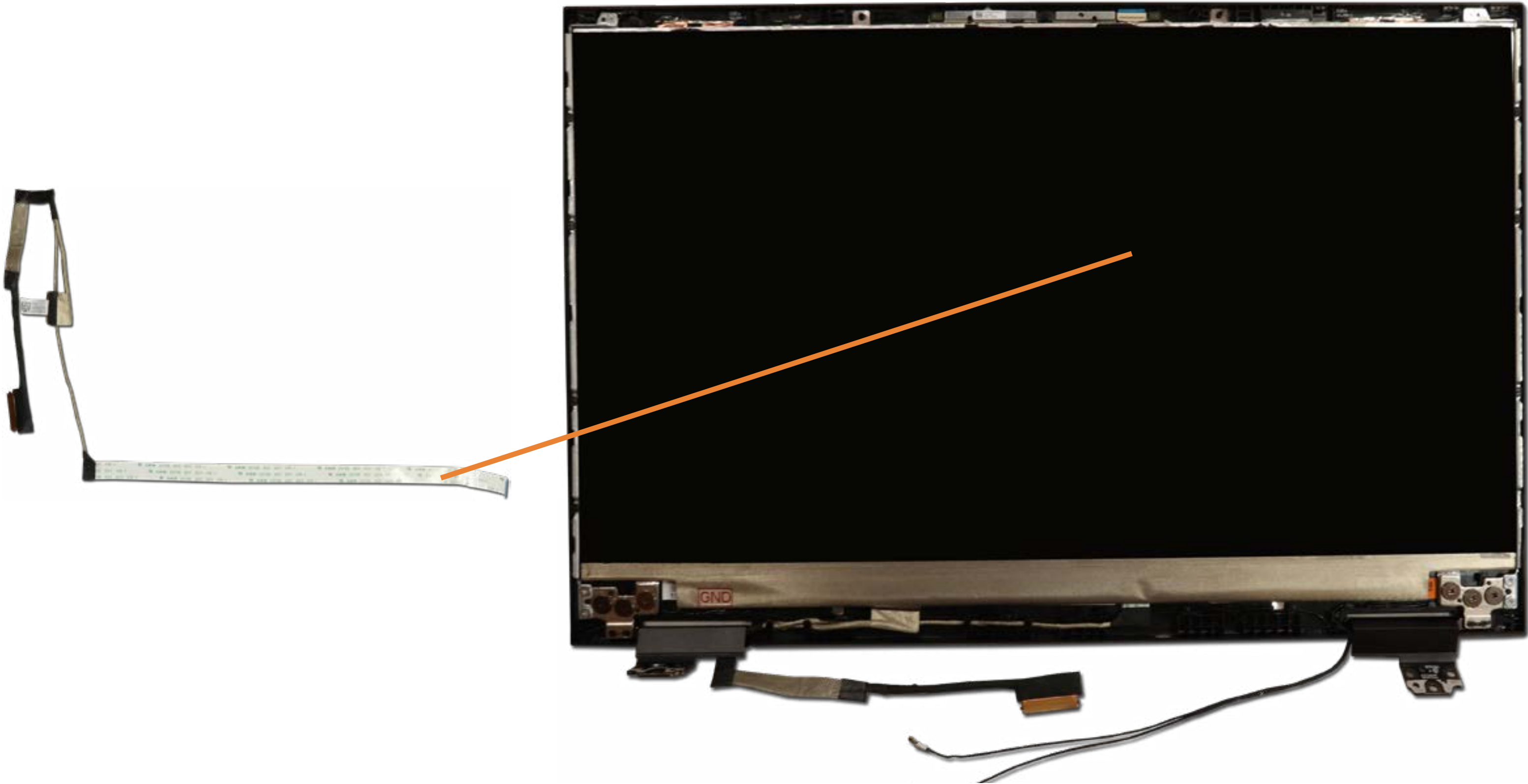
Webcam



Go to External Views

- Base Enclosure
- M.2 Solid State Drive(s)
- Battery
- Memory Module(s)
- Left Speaker
- SD Card Reader Board
- Heat Sink
- DC-in Connector
- System Fans
- USB Board
- RJ-45 Bracket
- System Board (top)
- System Board (bottom)
- Right Speaker
- IR Board
- Touchpad
- Top Cover with Keyboard
- Display Bezel
- Display Panel
- Hinges
- Webcam
- LVDS Cable**
- Wireless LAN Antennas

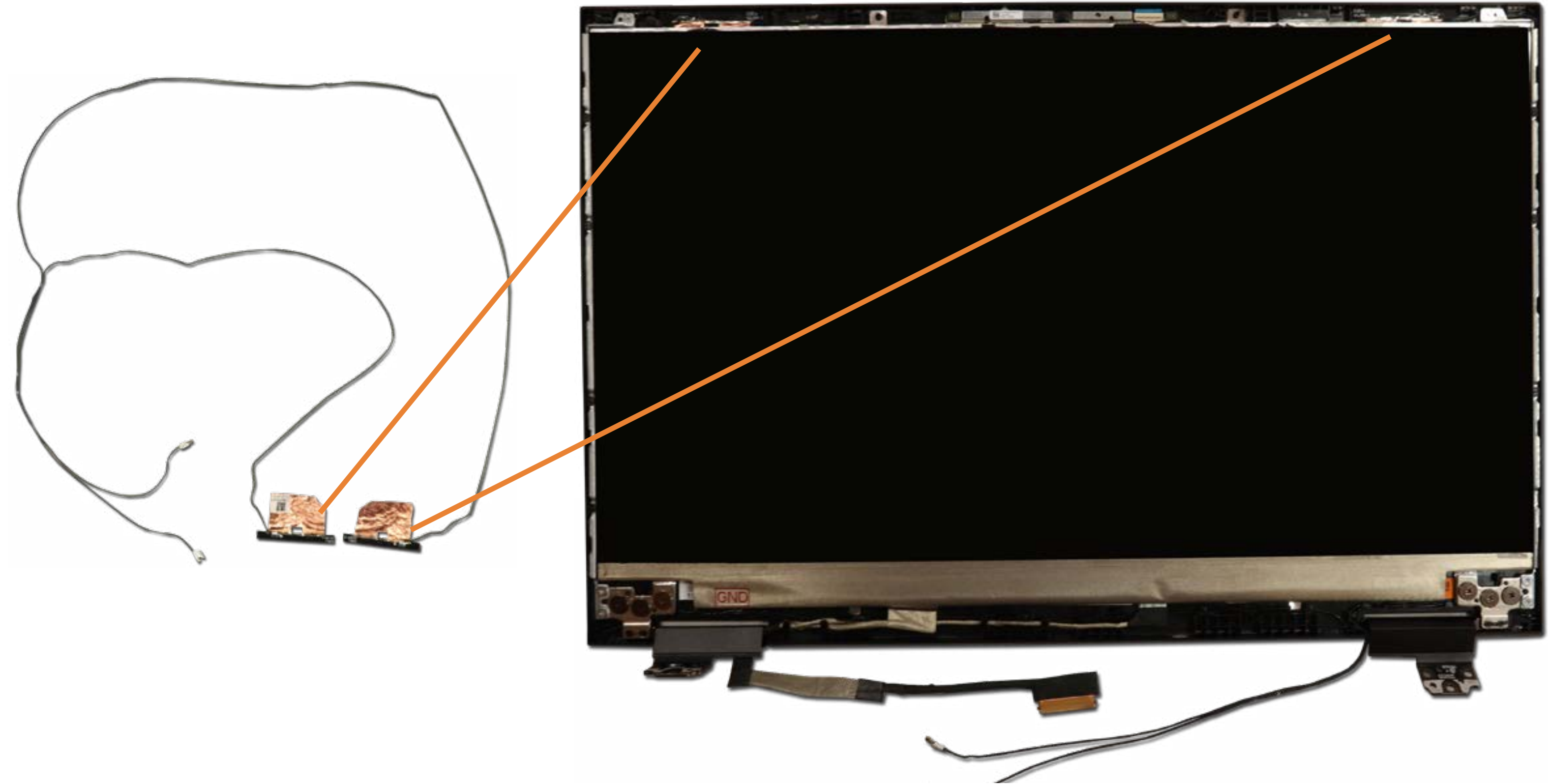
LVDS Cable



Go to External Views

Wireless LAN Antennas

- Base Enclosure
- M.2 Solid State Drive(s)
- Battery
- Memory Module(s)
- Left Speaker
- SD Card Reader Board
- Heat Sink
- DC-in Connector
- System Fans
- USB Board
- RJ-45 Bracket
- System Board (top)
- System Board (bottom)
- Right Speaker
- IR Board
- Touchpad
- Top Cover with Keyboard
- Display Bezel
- Display Panel
- Hinges
- Webcam
- LVDS Cable
- Wireless LAN Antennas



[Go to External Views](#)