

Interactive Part Locator

HP EliteBook x360 1040 G7 Notebook PC

Welcome to the interactive part locator
for the HP EliteBook x360 1040 G7 Notebook PC

Here's how to use it...

[External Views](#) (Click the link to navigate to the views)

On this page you will find large icons of each of the external views of this product. To view a specific view in greater detail, simply click that view.

[Parts List](#) (Click the link to navigate to the parts)

On this page, you will find a list of all of the replaceable parts for this product. To view a specific part and its location in the product, click the part name in the list.

That's it! On every page there is a link that brings you back to either the External Views or the Parts List, enabling you to navigate to whatever view or part you wish to review.

External Views

[Back to Welcome page](#)



Front



Left



Right



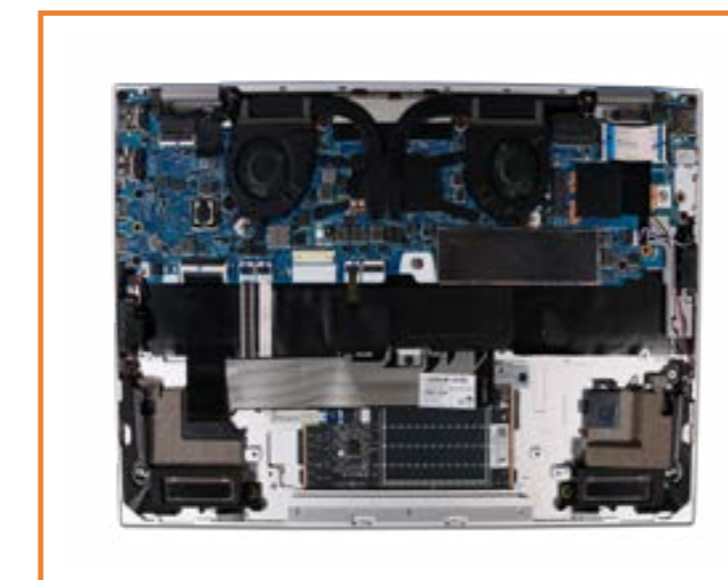
Rear



Display



Top



Internal



Bottom

[Go to Parts List](#)

Front View

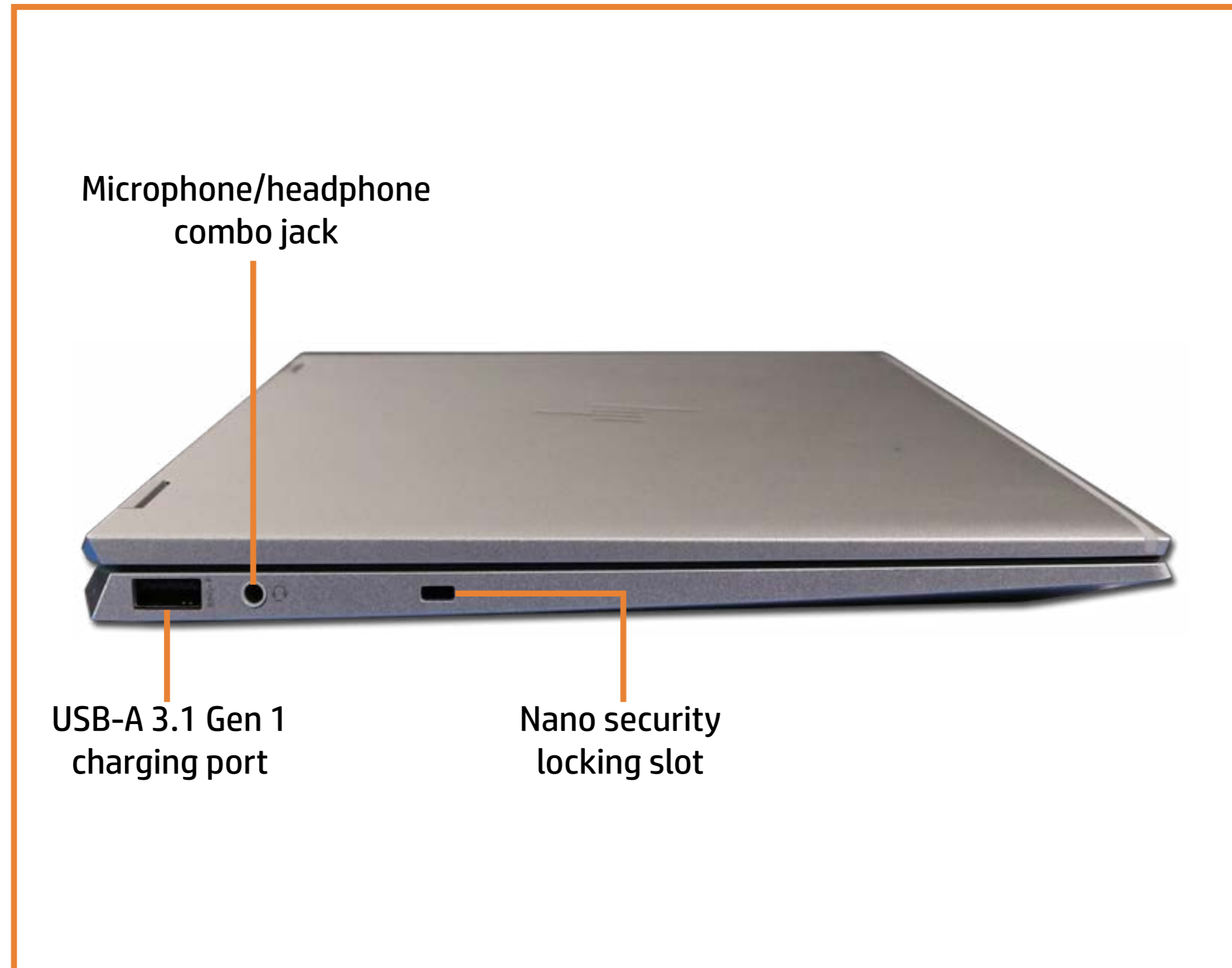
[Back to External Views](#)



[Go to Parts List](#)

Left View

[Back to External Views](#)



Microphone/headphone
combo jack

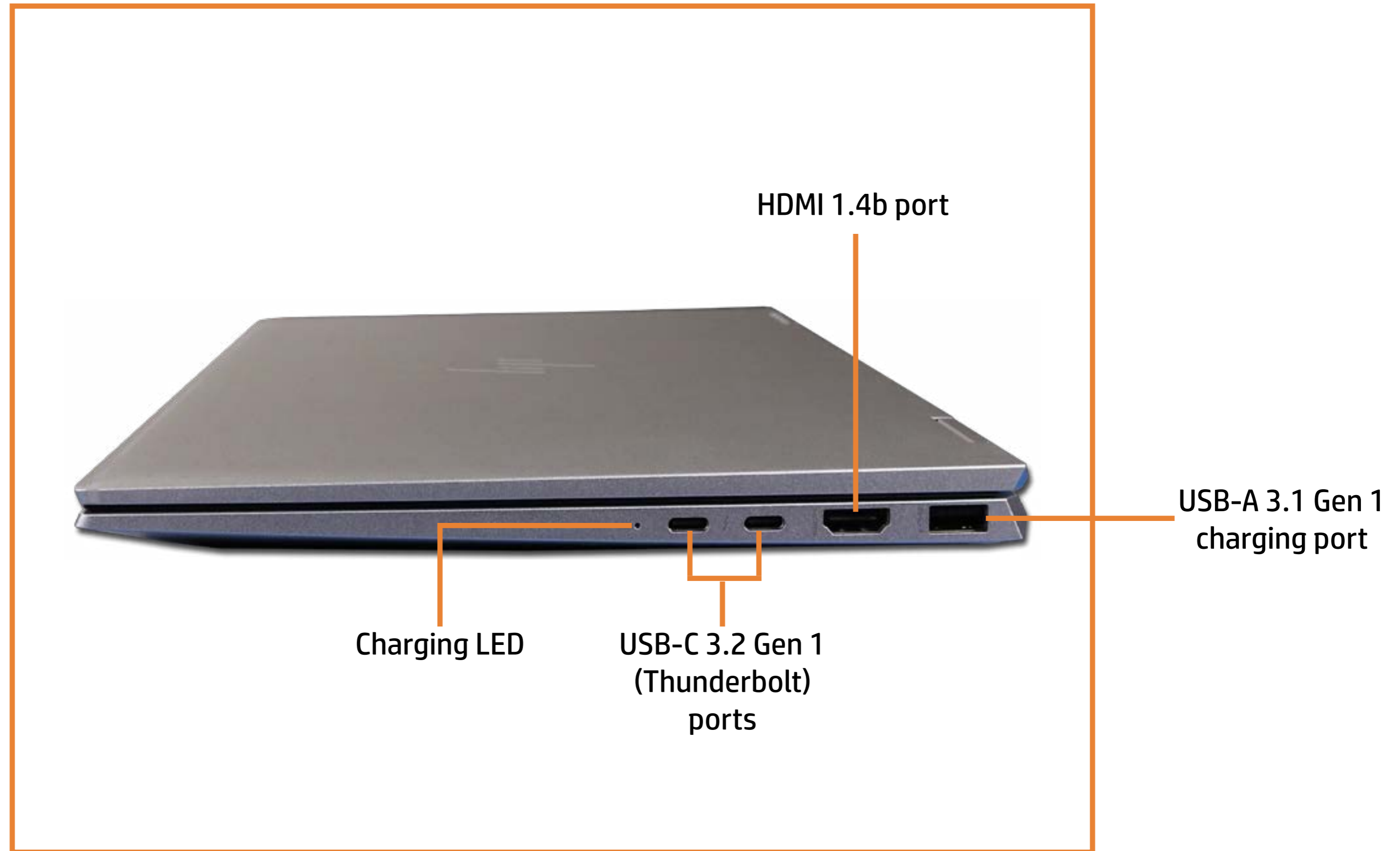
USB-A 3.1 Gen 1
charging port

Nano security
locking slot

[Go to Parts List](#)

Right View

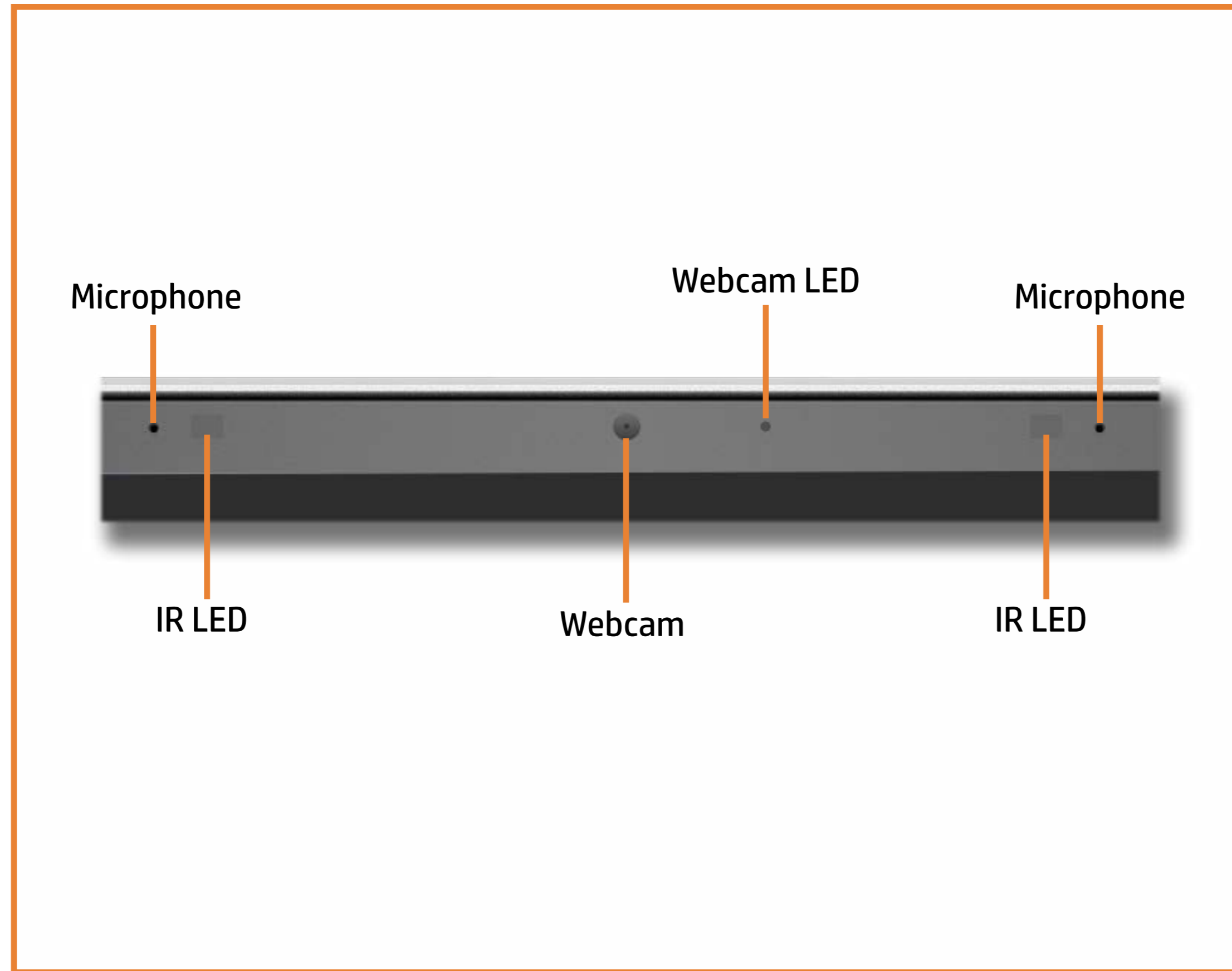
[Back to External Views](#)



[Go to Parts List](#)

Display View

[Back to External Views](#)



[Go to Parts List](#)

Rear View

[Back to External Views](#)



Hinges

[Go to Parts List](#)

Top View

[Back to External Views](#)

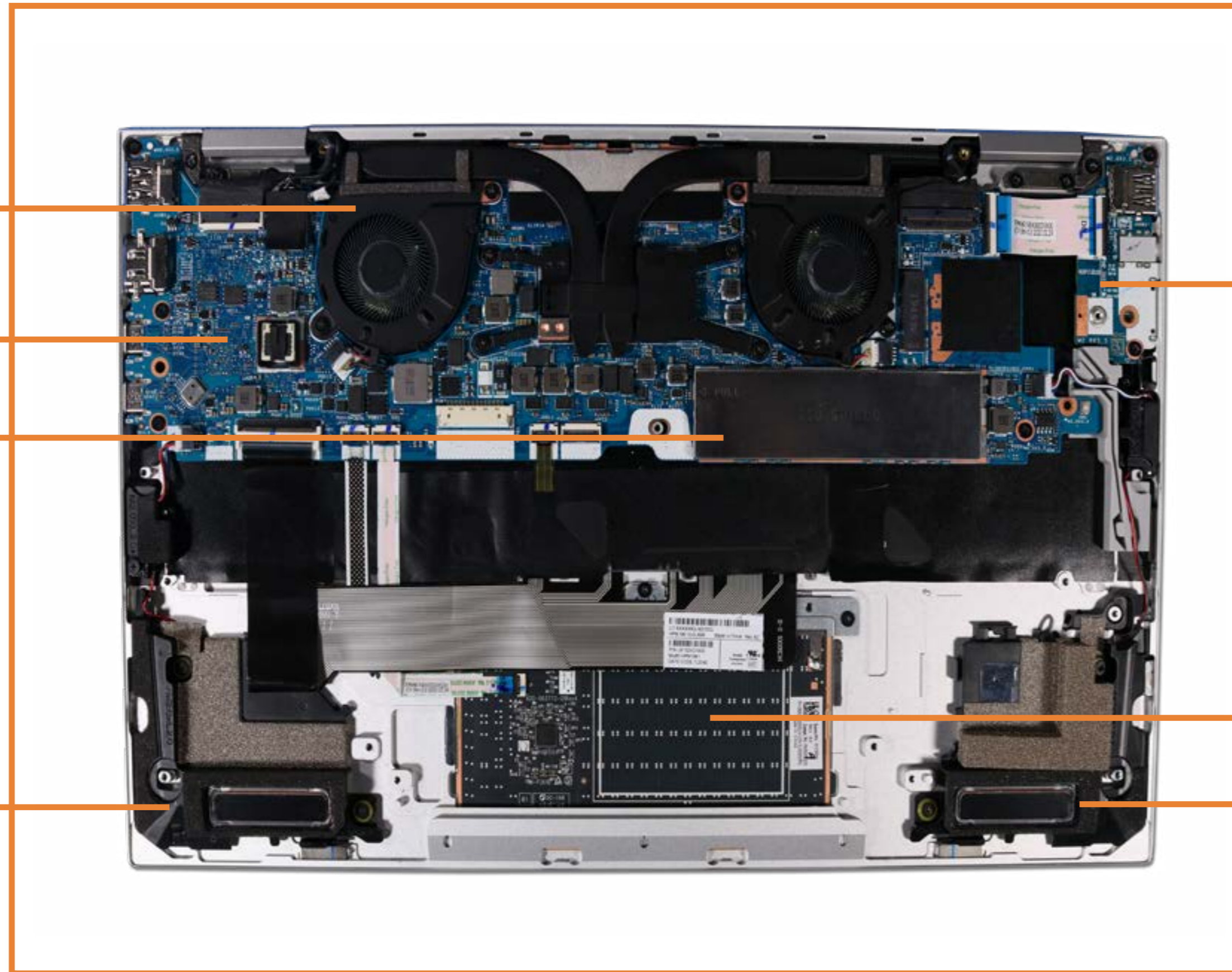


[Go to Parts List](#)

Internal View

[Back to External Views](#)

Thermal Module
System Board
M.2 Solid State Drive



USB Board

Touchpad

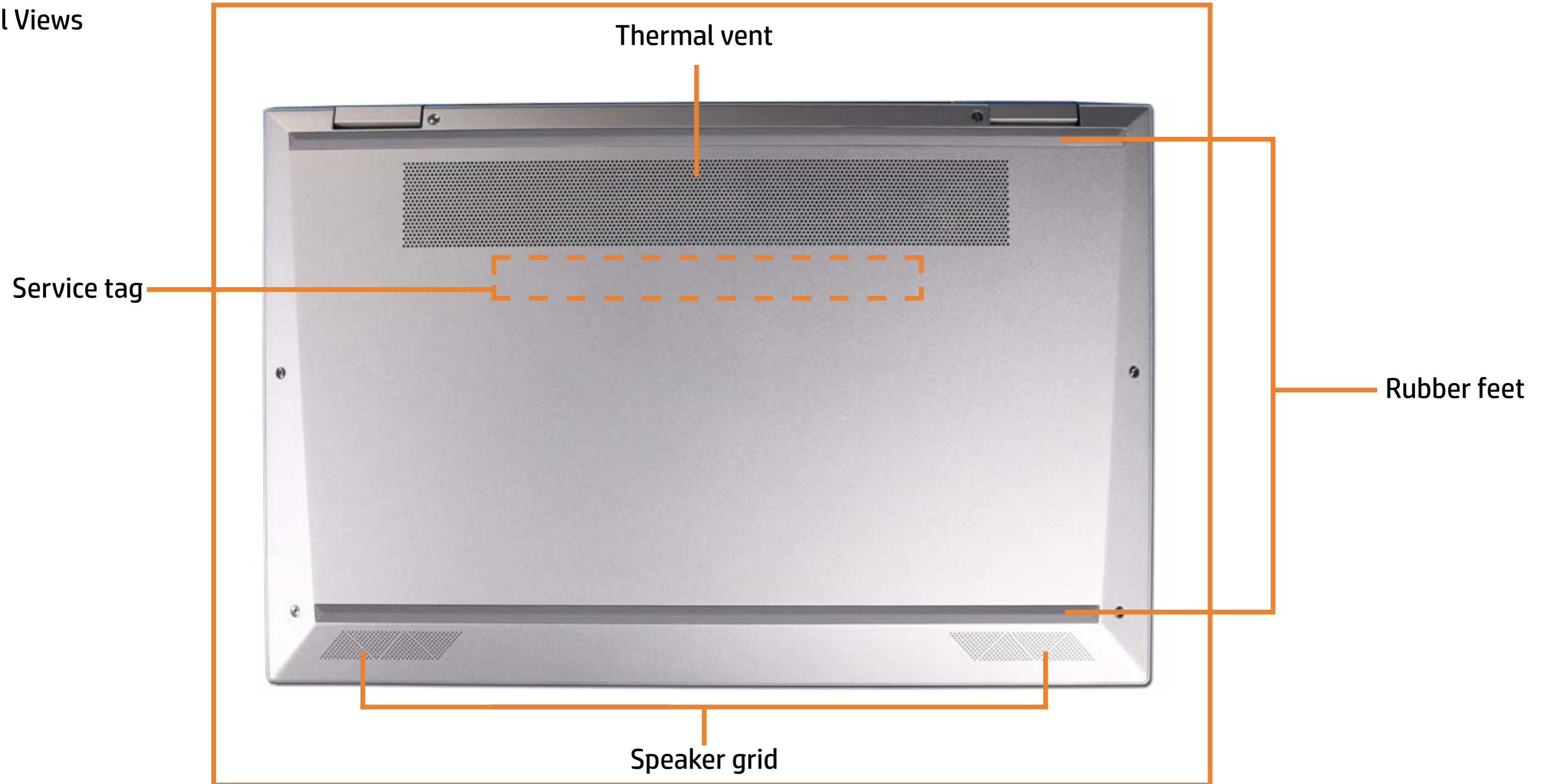
Left Speaker

Right Speaker

[Go to Parts List](#)

Bottom View

[Back to External Views](#)



[Go to Parts List](#)

Base Enclosure

Base Enclosure

- Battery
- M.2 Solid State Drive
- Thermal Module
- USB Board
- Right Speaker
- Left Speaker
- Touchpad
- Display Panel Assembly
- System Board (top)
- System Board (bottom)
- Thermal Sensor Board
- Top Cover with Keyboard



[Go to External Views](#)

Battery

Base Enclosure

Battery

M.2 Solid State Drive

Thermal Module

USB Board

Right Speaker

Left Speaker

Touchpad

Display Panel Assembly

System Board (top)

System Board (bottom)

Thermal Sensor Board

Top Cover with Keyboard



Go to External Views

M.2 Solid State Drive

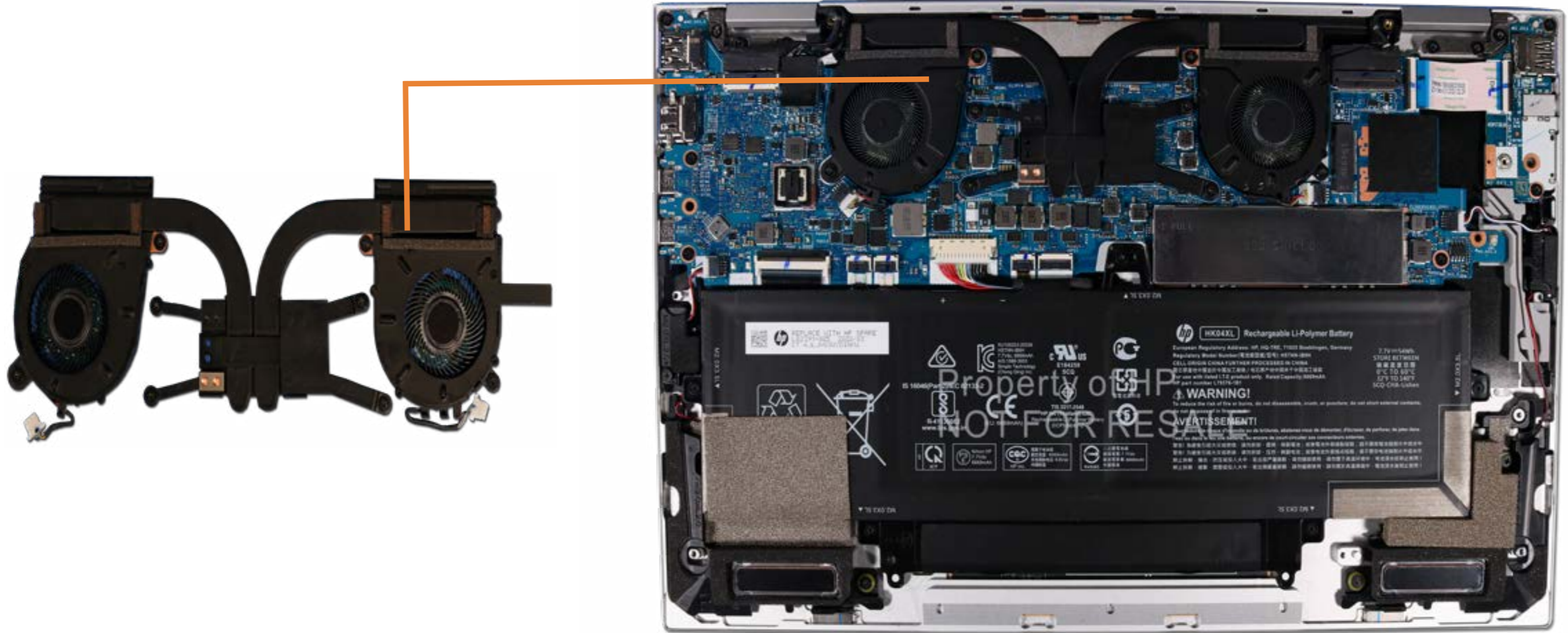
- Base Enclosure
- Battery
- M.2 Solid State Drive**
- Thermal Module
- USB Board
- Right Speaker
- Left Speaker
- Touchpad
- Display Panel Assembly
- System Board (top)
- System Board (bottom)
- Thermal Sensor Board
- Top Cover with Keyboard



[Go to External Views](#)

Thermal Module

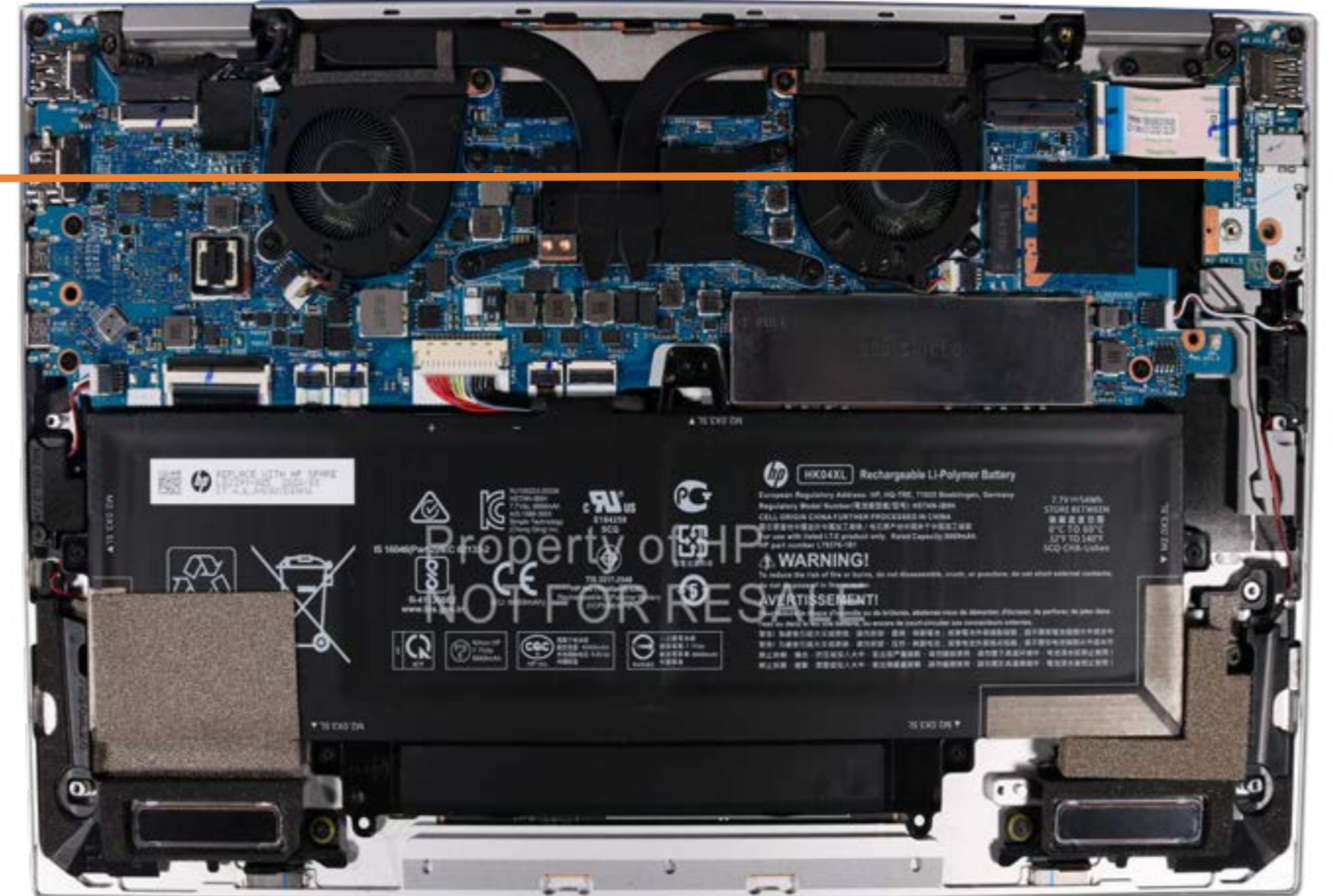
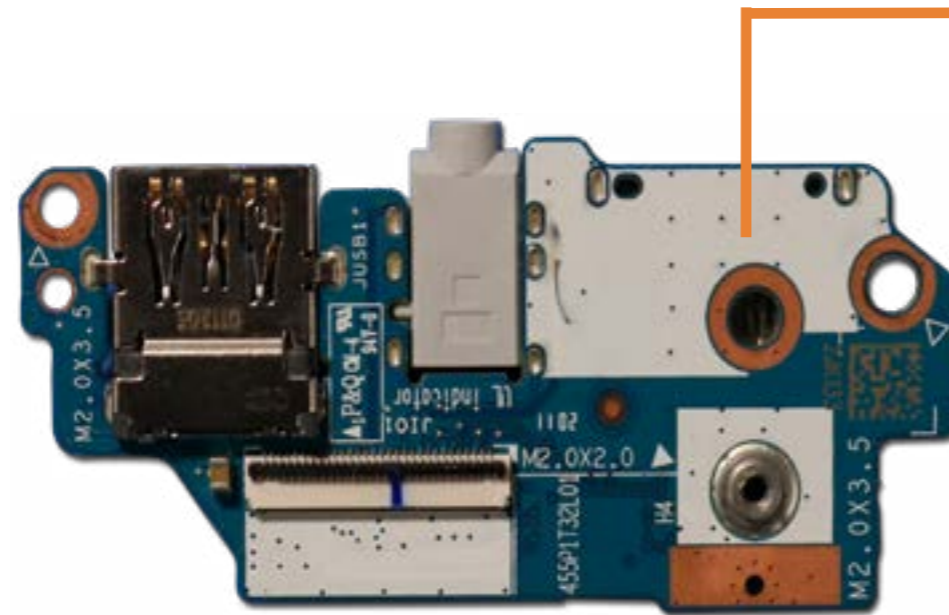
- Base Enclosure
- Battery
- M.2 Solid State Drive
- Thermal Module**
- USB Board
- Right Speaker
- Left Speaker
- Touchpad
- Display Panel Assembly
- System Board (top)
- System Board (bottom)
- Thermal Sensor Board
- Top Cover with Keyboard



[Go to External Views](#)

USB Board

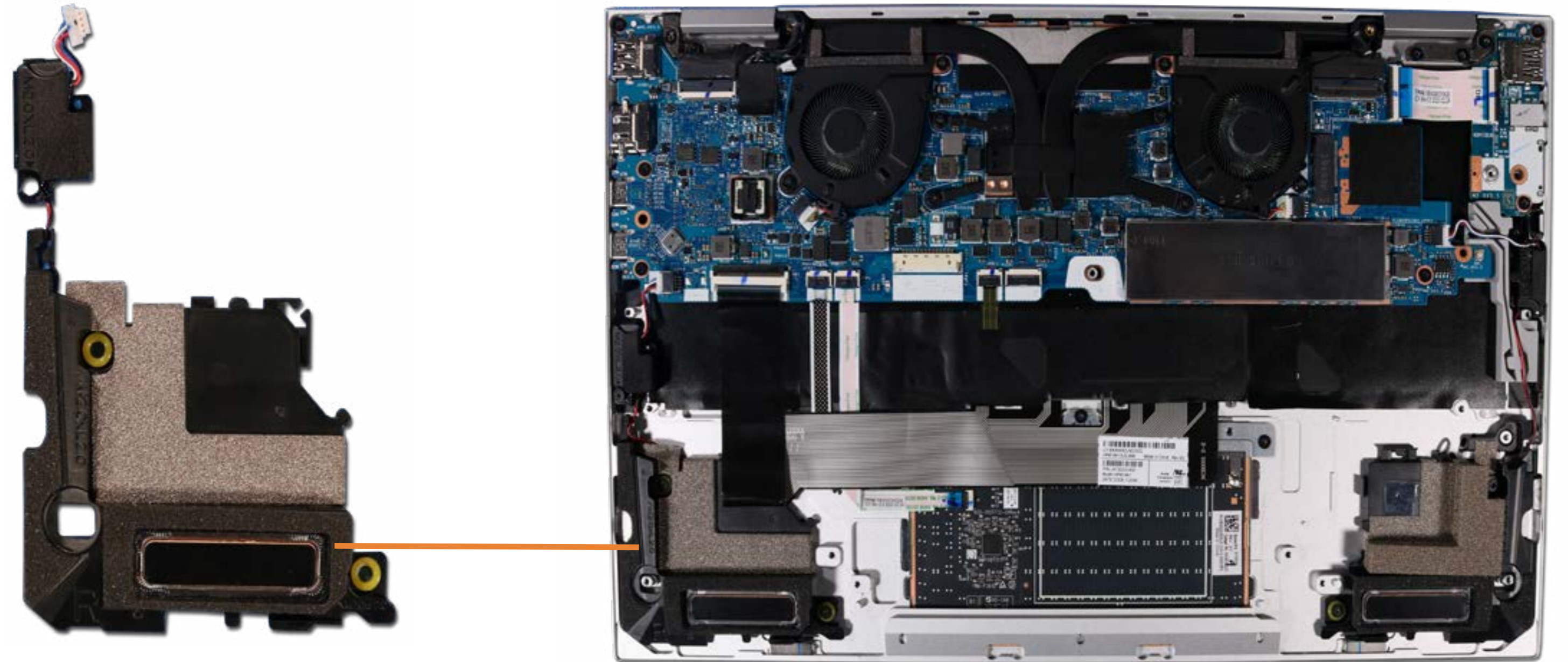
- Base Enclosure
- Battery
- M.2 Solid State Drive
- Thermal Module
- USB Board**
- Right Speaker
- Left Speaker
- Touchpad
- Display Panel Assembly
- System Board (top)
- System Board (bottom)
- Thermal Sensor Board
- Top Cover with Keyboard



[Go to External Views](#)

Right Speaker

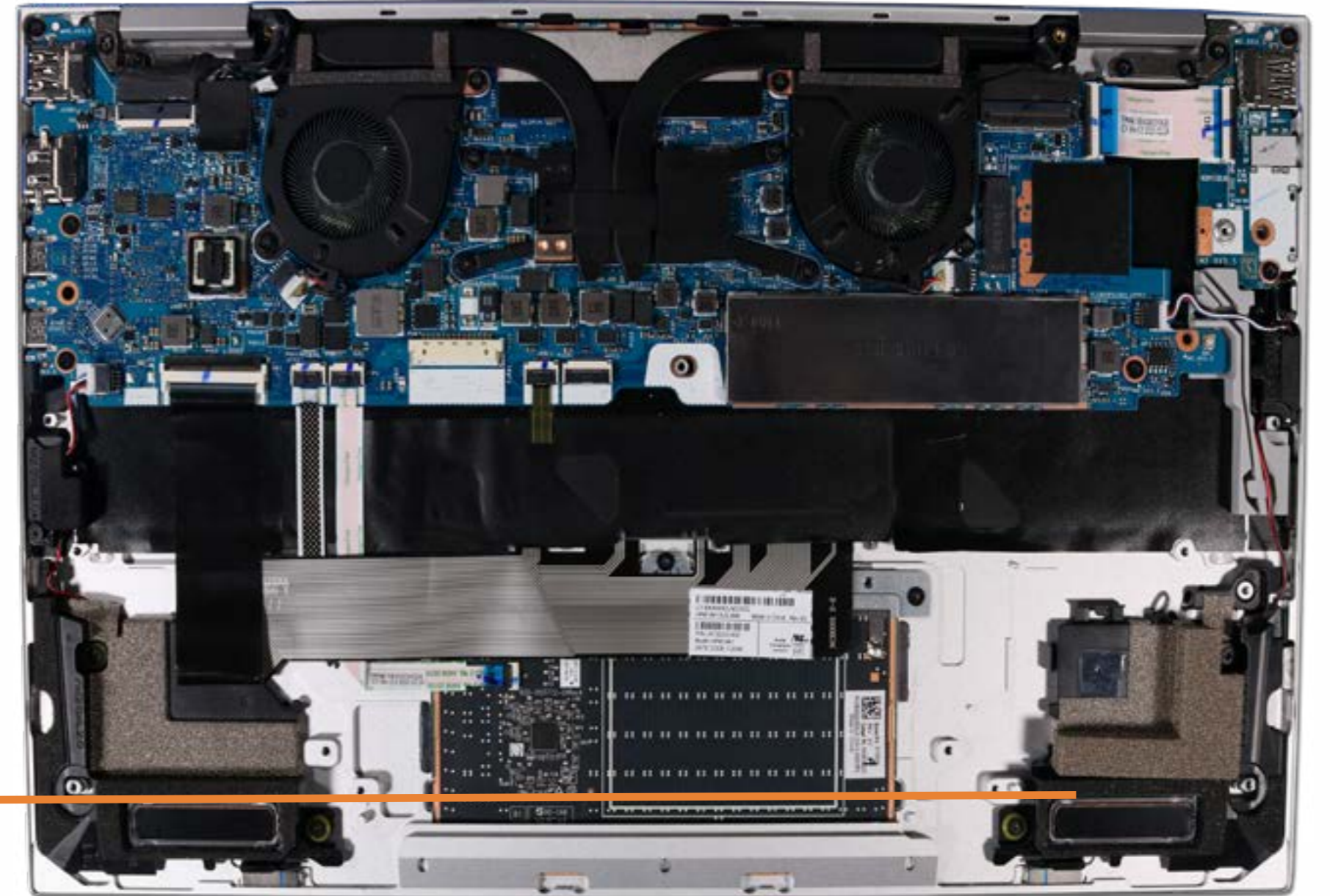
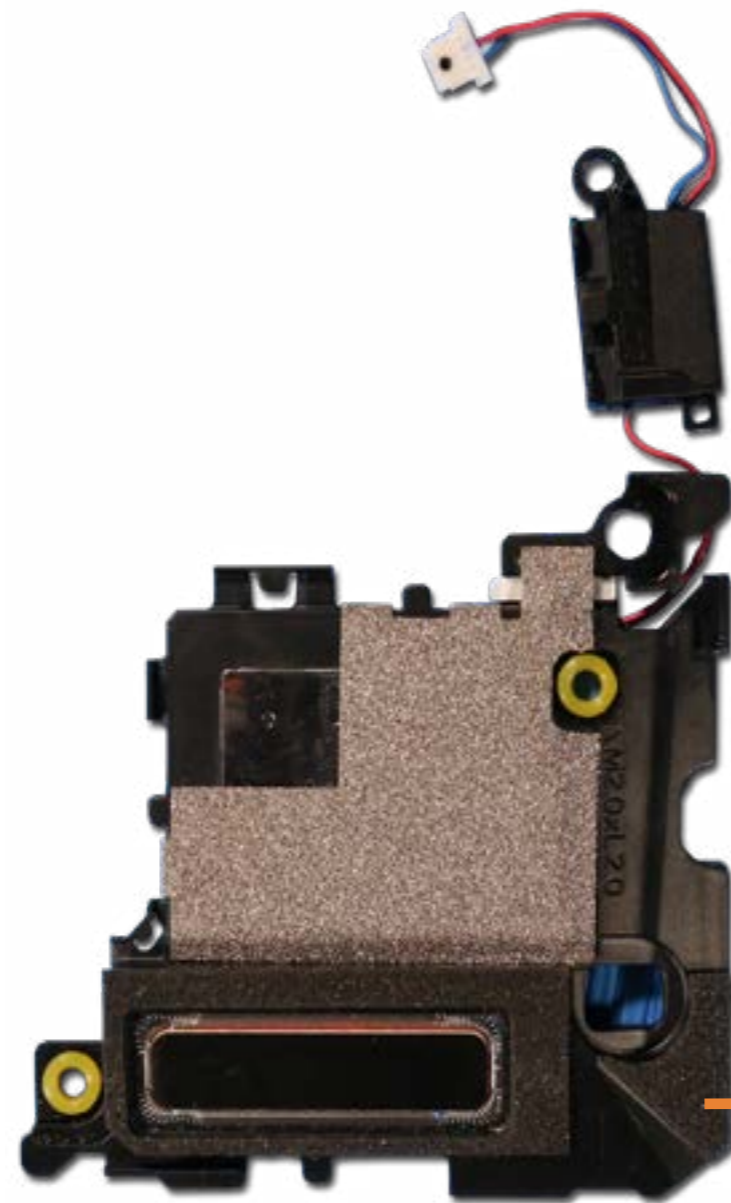
- Base Enclosure
- Battery
- M.2 Solid State Drive
- Thermal Module
- USB Board
- Right Speaker**
- Left Speaker
- Touchpad
- Display Panel Assembly
- System Board (top)
- System Board (bottom)
- Thermal Sensor Board
- Top Cover with Keyboard



[Go to External Views](#)

Left Speaker

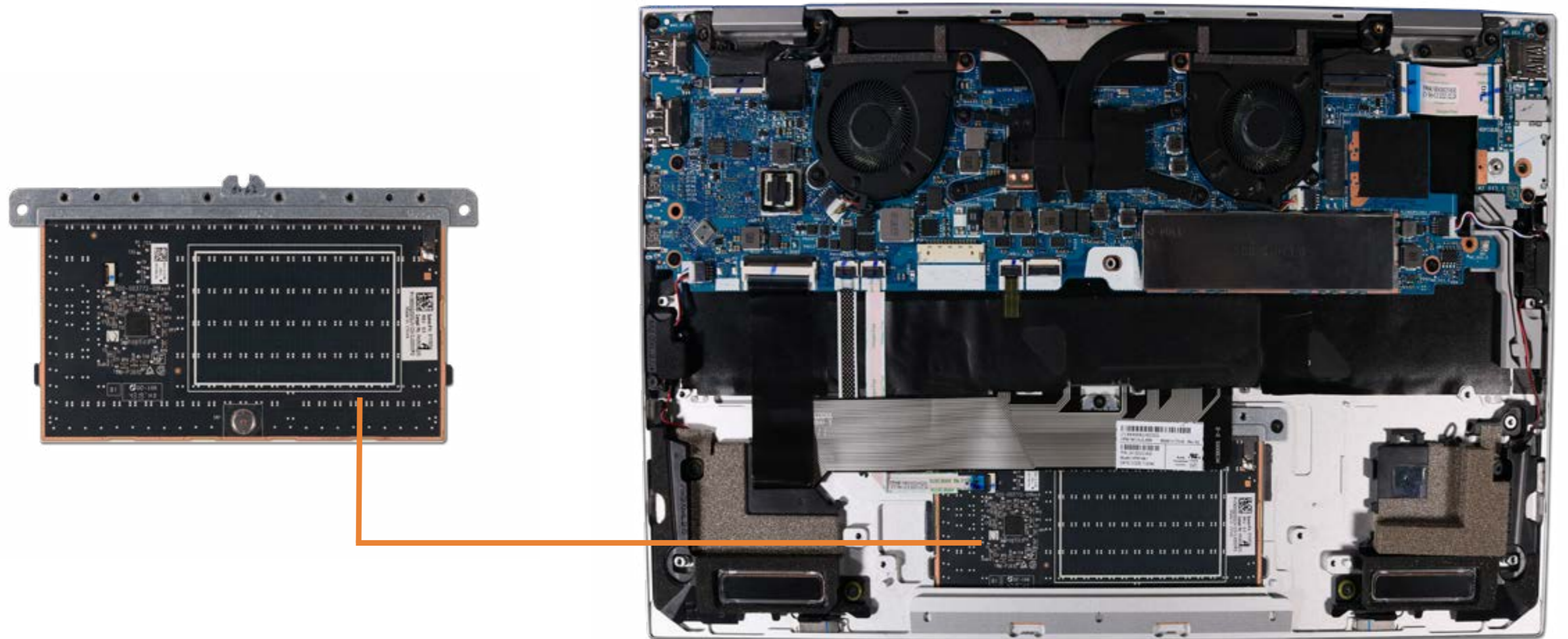
- Base Enclosure
- Battery
- M.2 Solid State Drive
- Thermal Module
- USB Board
- Right Speaker
- Left Speaker**
- Touchpad
- Display Panel Assembly
- System Board (top)
- System Board (bottom)
- Thermal Sensor Board
- Top Cover with Keyboard



[Go to External Views](#)

Touchpad

- Base Enclosure
- Battery
- M.2 Solid State Drive
- Thermal Module
- USB Board
- Right Speaker
- Left Speaker
- Touchpad**
- Display Panel Assembly
- System Board (top)
- System Board (bottom)
- Thermal Sensor Board
- Top Cover with Keyboard



[Go to External Views](#)

Display Panel Assembly

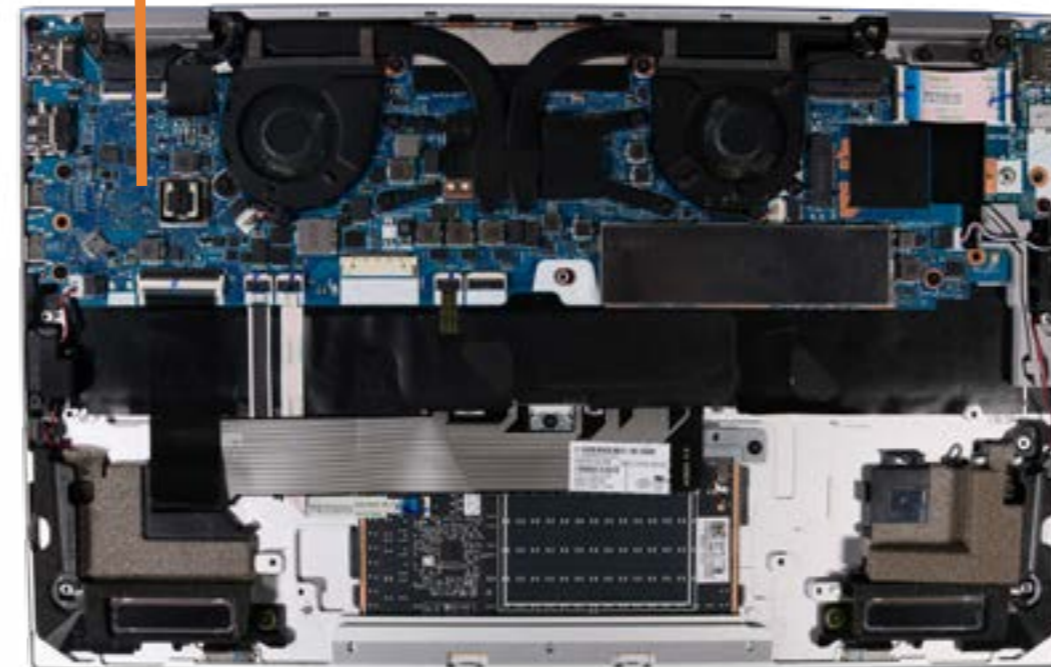
- Base Enclosure
- Battery
- M.2 Solid State Drive
- Thermal Module
- USB Board
- Right Speaker
- Left Speaker
- Touchpad
- Display Panel Assembly**
- System Board (top)
- System Board (bottom)
- Thermal Sensor Board
- Top Cover with Keyboard



[Go to External Views](#)

System Board (top)

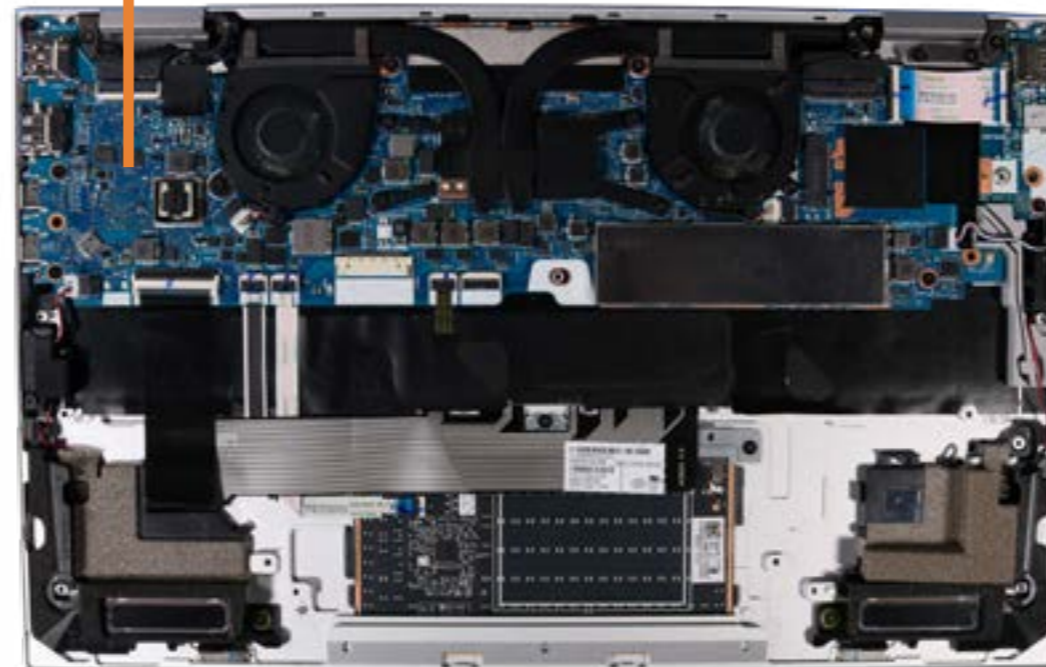
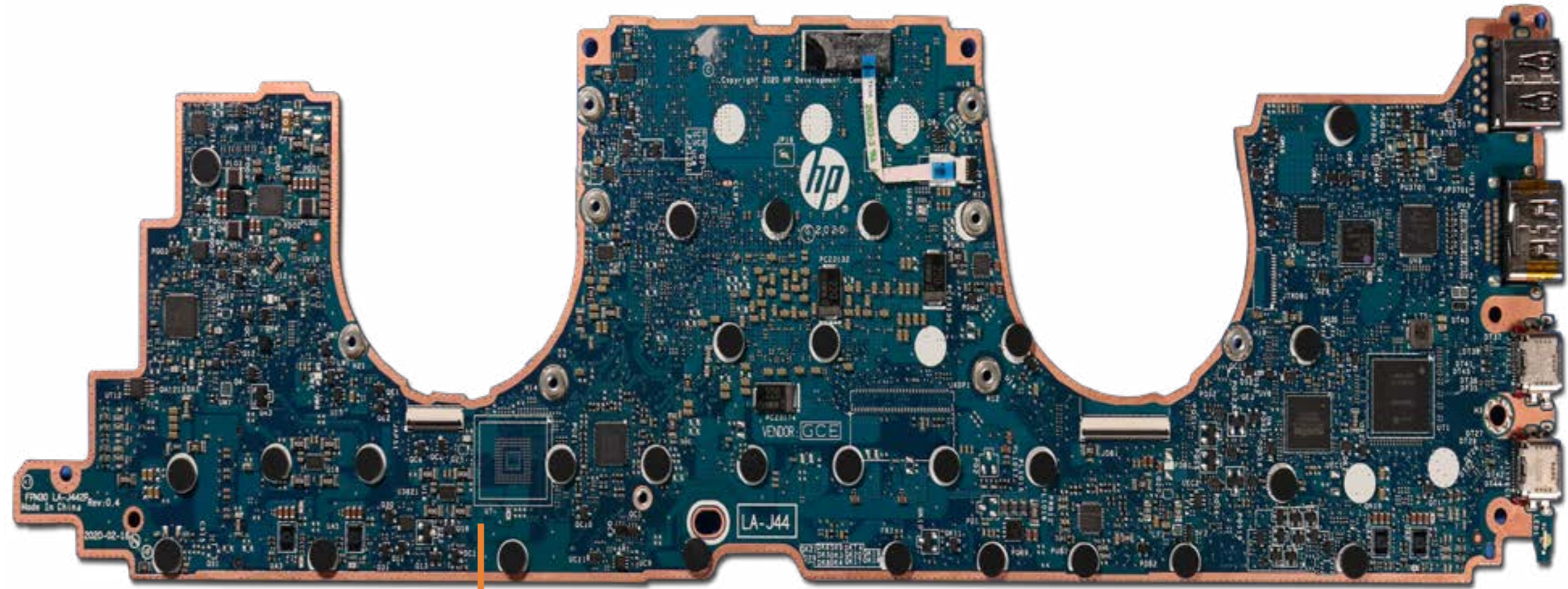
- Base Enclosure
- Battery
- M.2 Solid State Drive
- Thermal Module
- USB Board
- Right Speaker
- Left Speaker
- Touchpad
- Display Panel Assembly
- System Board (top)**
- System Board (bottom)
- Thermal Sensor Board
- Top Cover with Keyboard



[Go to External Views](#)

System Board (bottom)

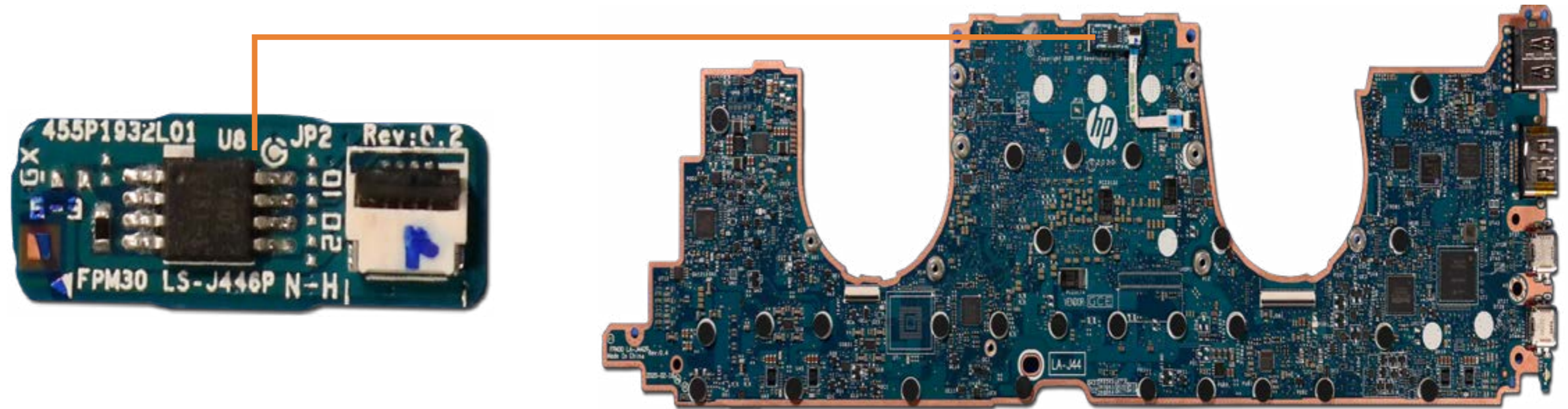
- Base Enclosure
- Battery
- M.2 Solid State Drive
- Thermal Module
- USB Board
- Right Speaker
- Left Speaker
- Touchpad
- Display Panel Assembly
- System Board (top)
- System Board (bottom)**
- Thermal Sensor Board
- Top Cover with Keyboard



[Go to External Views](#)

Thermal Sensor Board

- Base Enclosure
- Battery
- M.2 Solid State Drive
- Thermal Module
- USB Board
- Right Speaker
- Left Speaker
- Touchpad
- Display Panel Assembly
- System Board (top)
- System Board (bottom)
- Thermal Sensor Board**
- Top Cover with Keyboard



[Go to External Views](#)

Top Cover with Keyboard

- Base Enclosure
- Battery
- M.2 Solid State Drive
- Thermal Module
- USB Board
- Right Speaker
- Left Speaker
- Touchpad
- Display Panel Assembly
- System Board (top)
- System Board (bottom)
- Thermal Sensor Board
- Top Cover with Keyboard**



[Go to External Views](#)