

Interactive Part Locator

HP ProBook 440 G8 Notebook PC

Welcome to the interactive part locator for the
HP ProBook 440 G8 Notebook PC

Here's how to use it...

[External Views](#) (Click the link to navigate to the views)

On this page you will find large icons of each of the external views of this product. To view a specific view in greater detail, simply click that view.

[Parts List](#) (Click the link to navigate to the parts)

On this page, you will find a list of all of the replaceable parts for this product. To view a specific part and its location in the product, click the part name in the list.

That's it! On every page there is a link that brings you back to either the External Views or the Parts List, enabling you to navigate to whatever view or part you wish to review.

External Views

[Back to Welcome page](#)



Front



Left



Right



Rear



Display



Top



Internal



Bottom

[Go to Parts List](#)

Front View

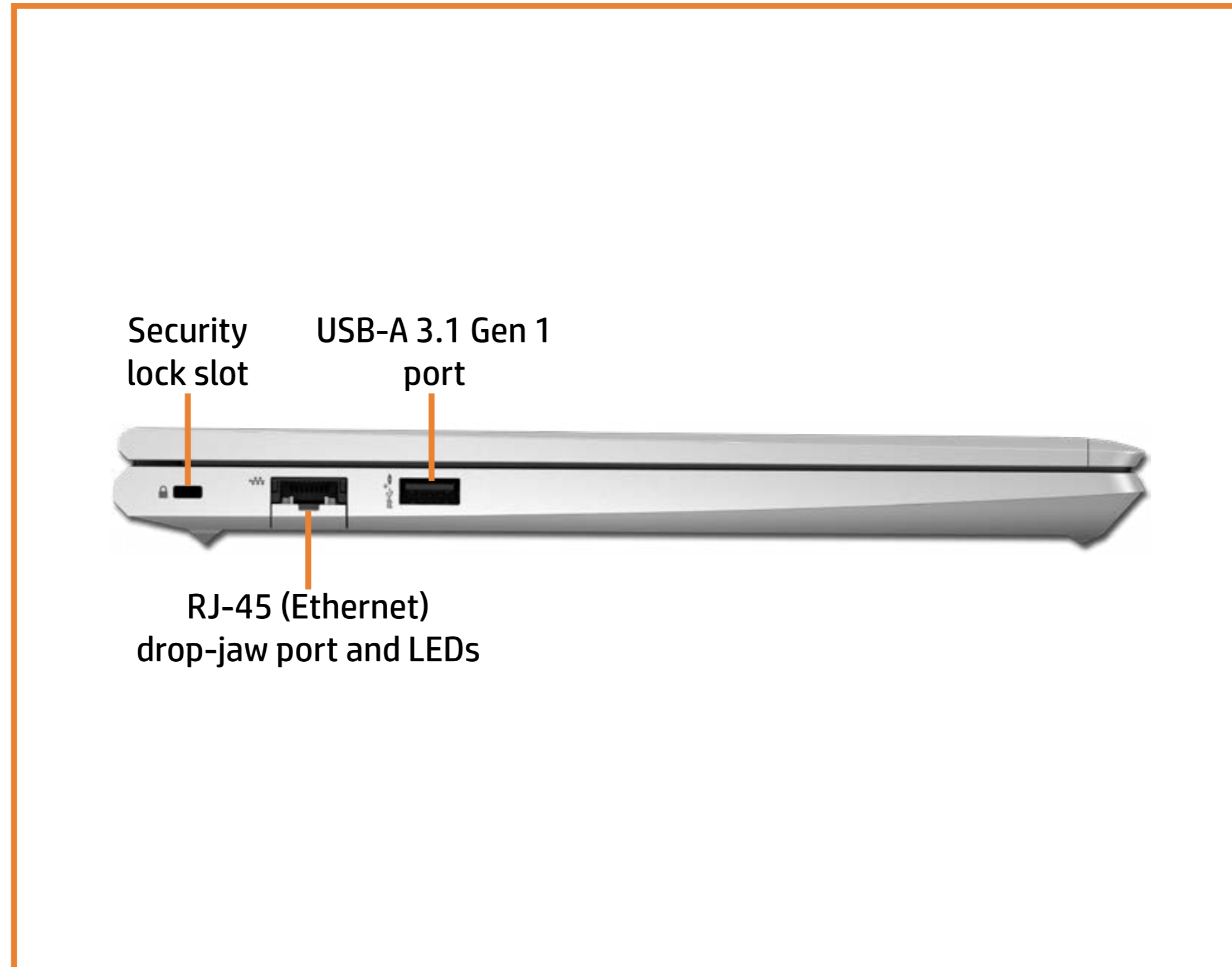
[Back to External Views](#)



[Go to Parts List](#)

Left View

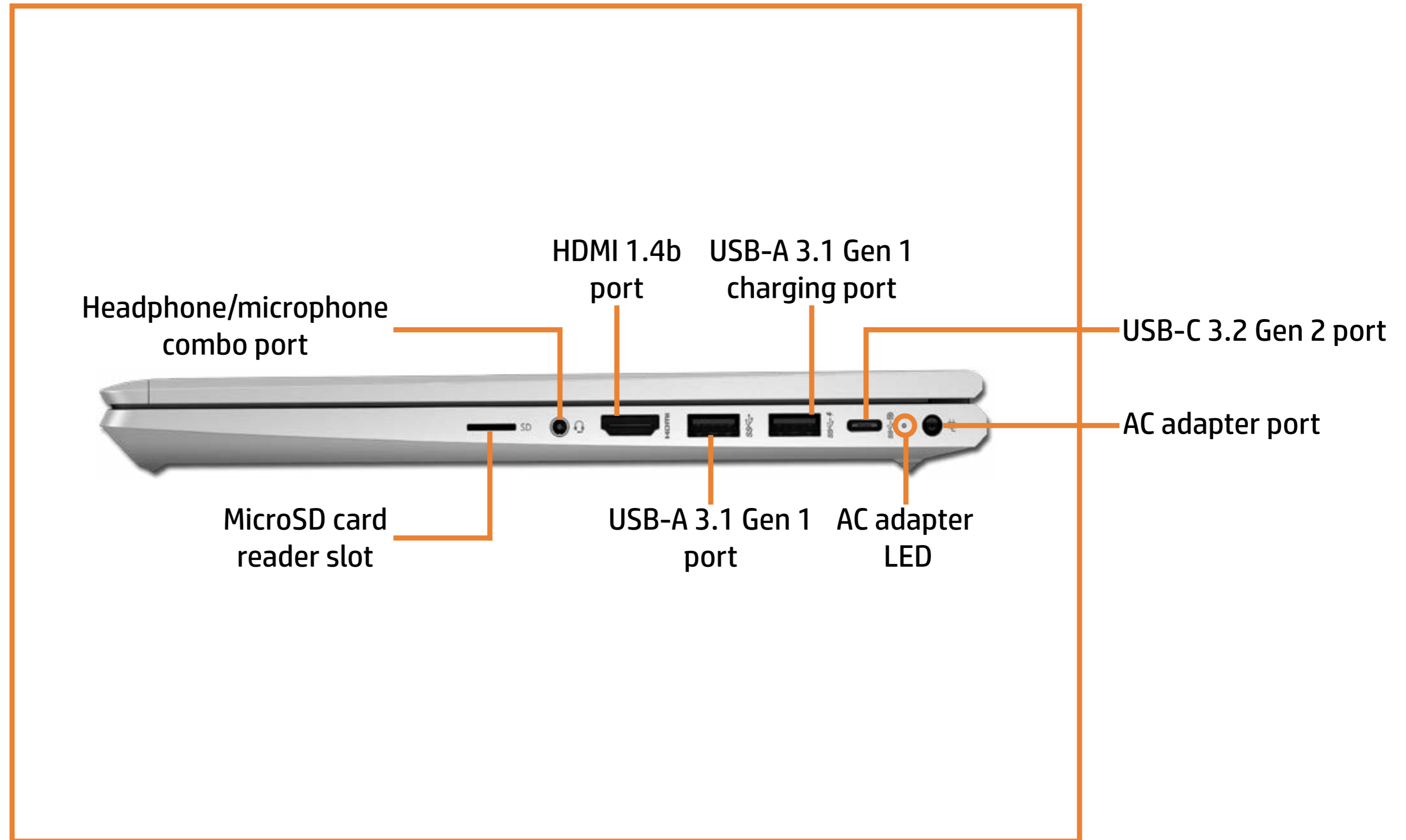
[Back to External Views](#)



[Go to Parts List](#)

Right View

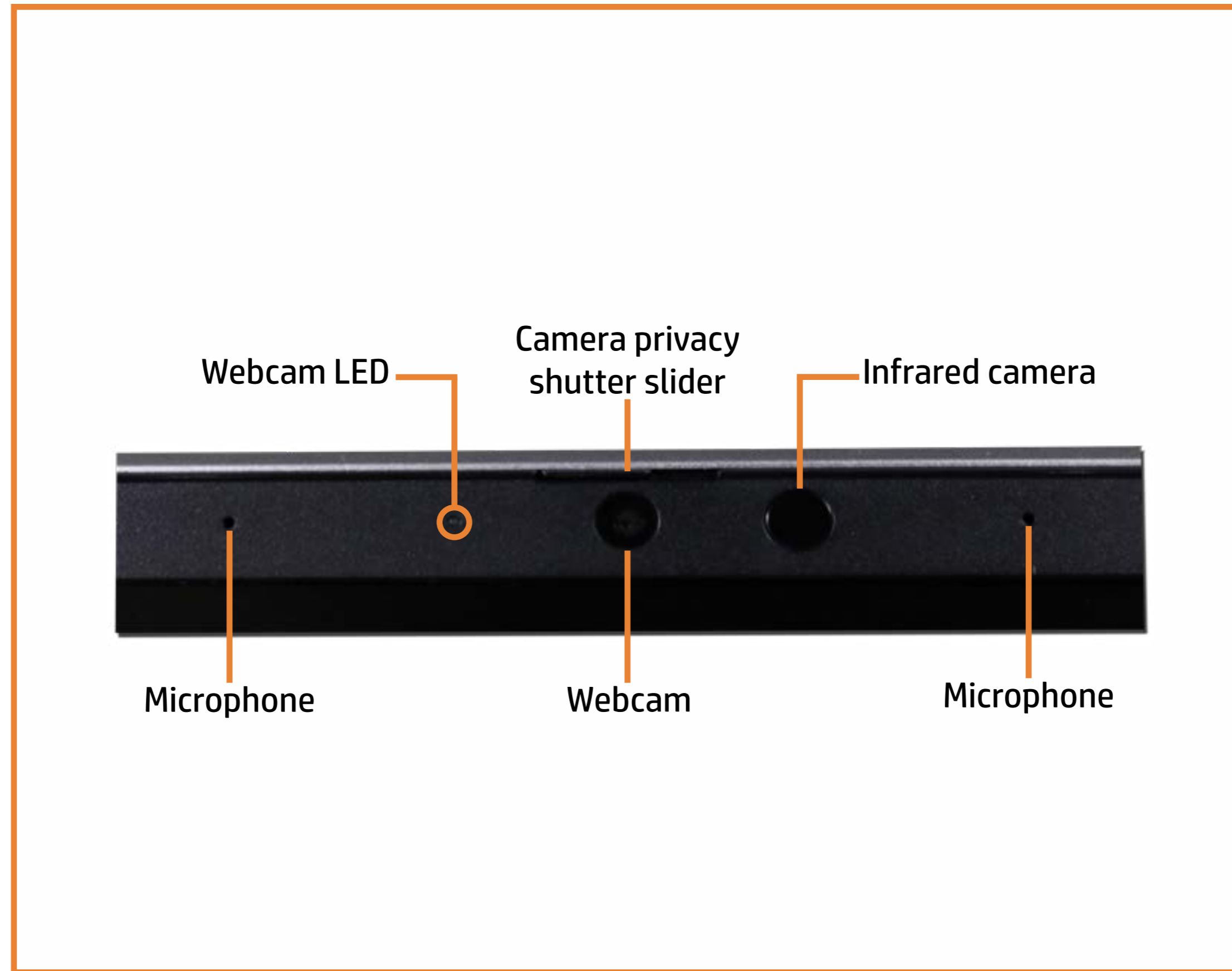
[Back to External Views](#)



[Go to Parts List](#)

Display View

[Back to External Views](#)



[Go to Parts List](#)

Rear View

[Back to External Views](#)

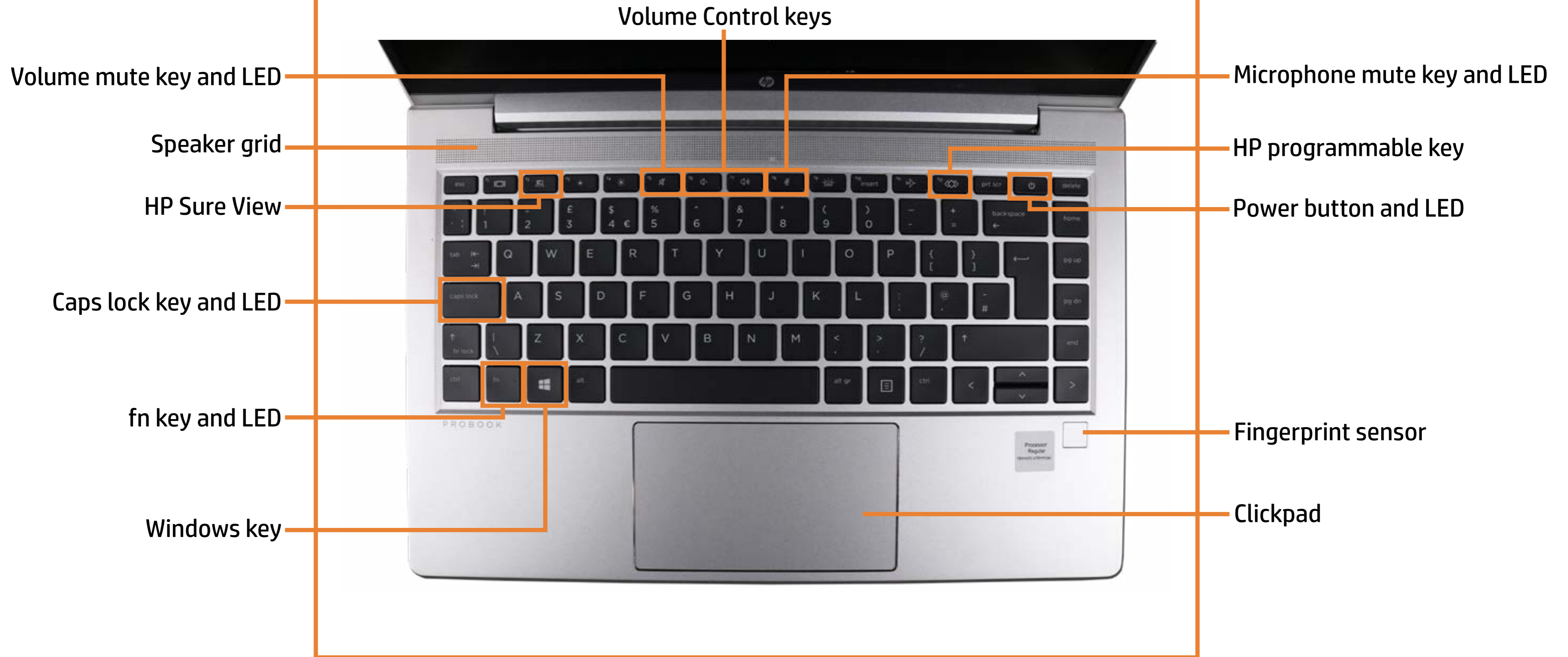


ProBook logo

[Go to Parts List](#)

Top View

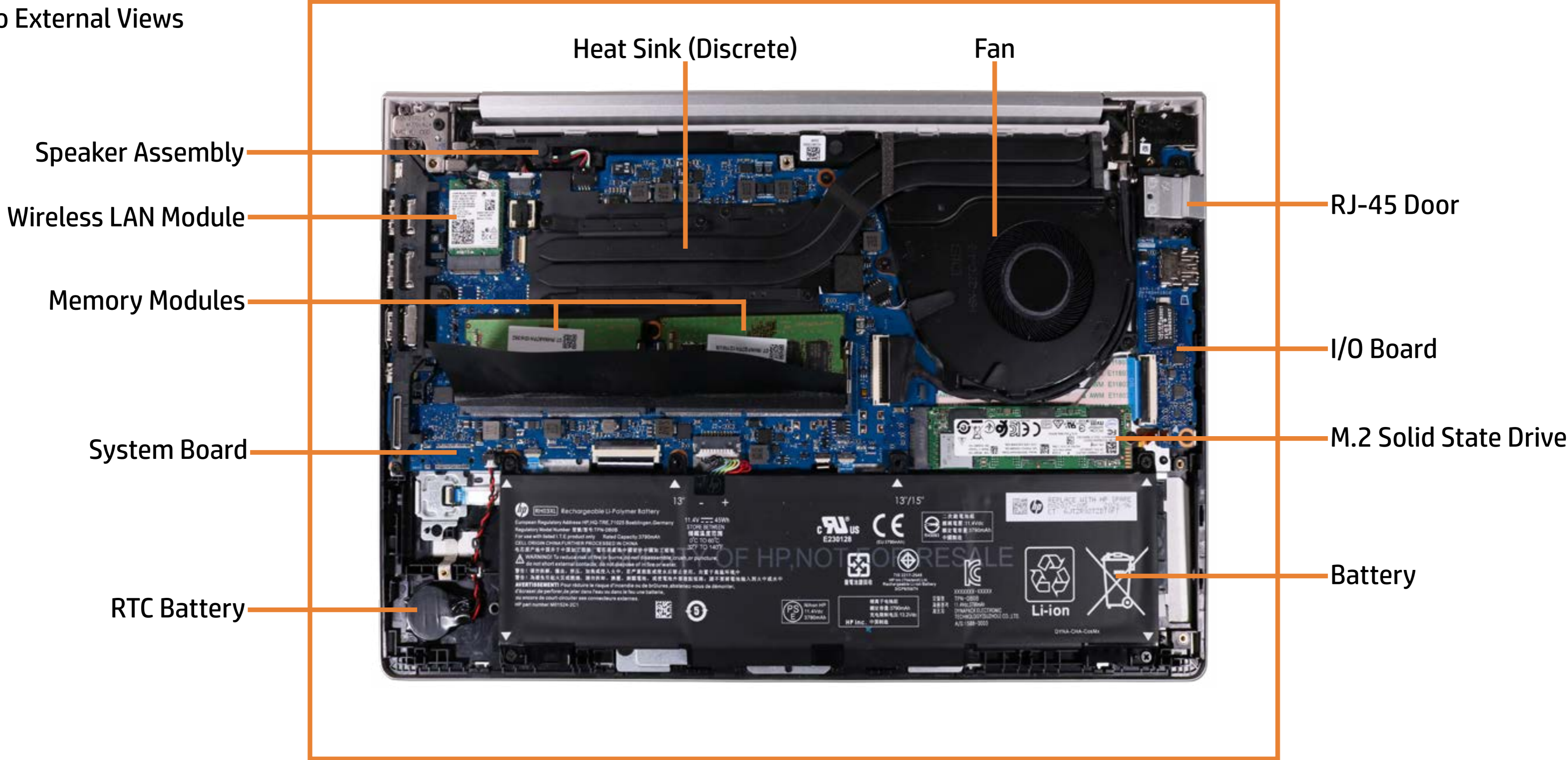
[Back to External Views](#)



[Go to Parts List](#)

Internal View

[Back to External Views](#)



[Go to Parts List](#)

Bottom View

[Back to External Views](#)

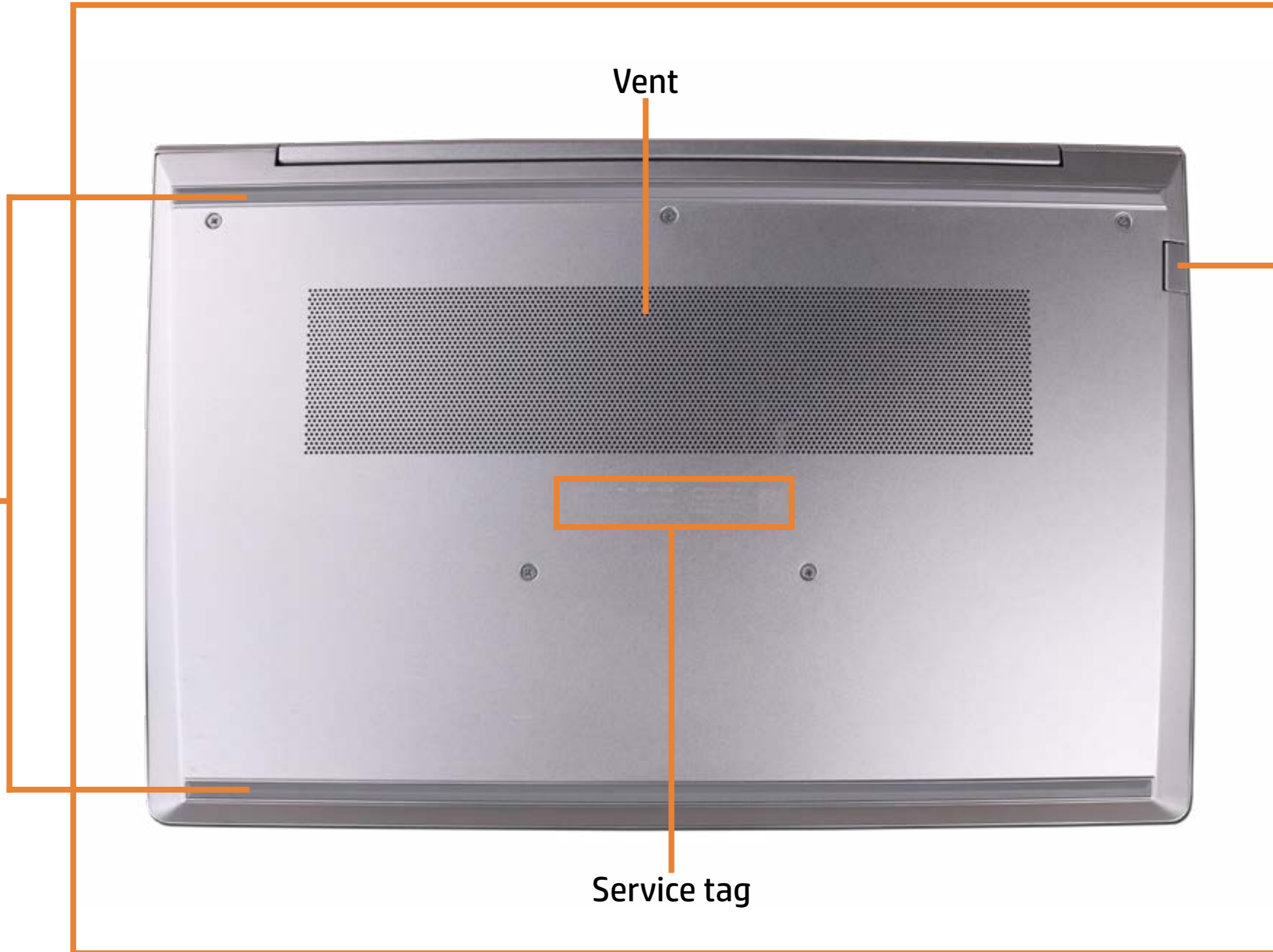
Rubber feet

Vent

RJ-45 (Ethernet)
drop-jaw port cover

Service tag

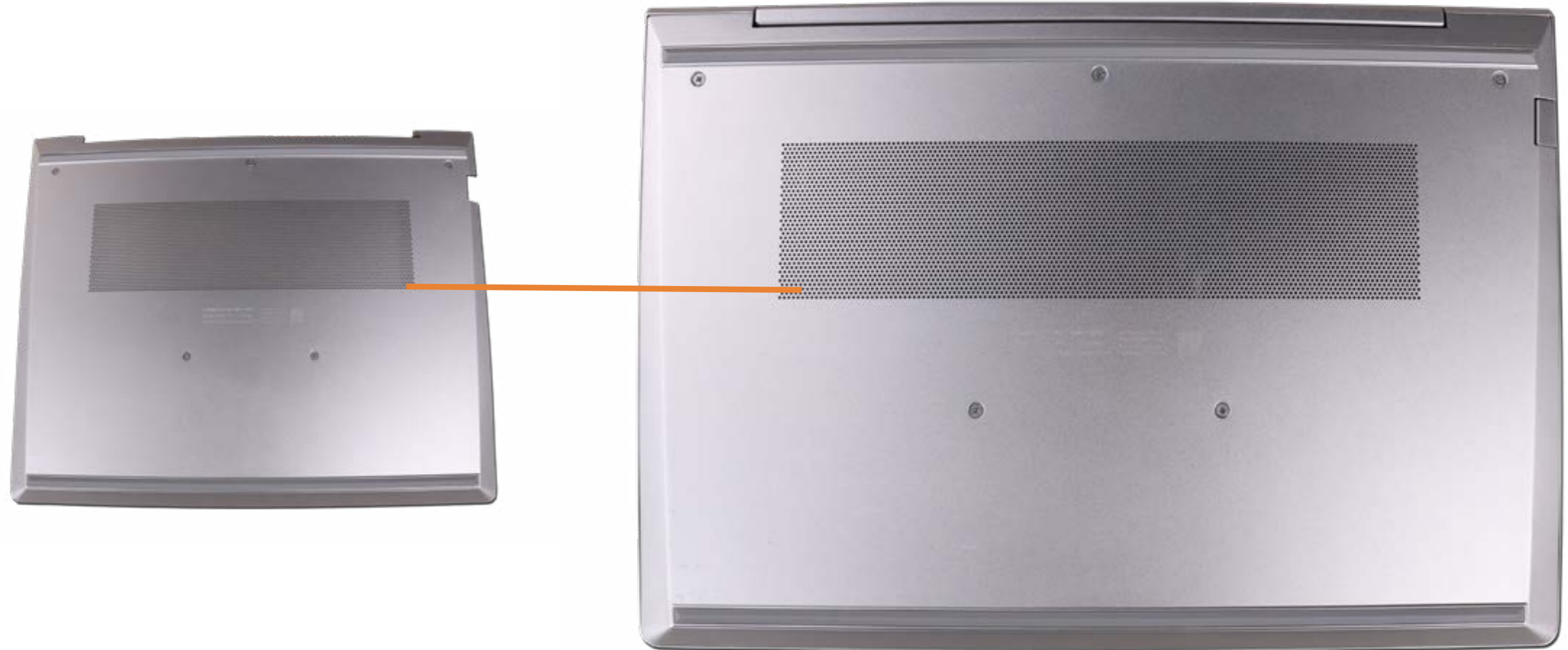
[Go to Parts List](#)



Base Enclosure

Base Enclosure

- Battery
- Memory Modules
- M.2 Solid State Drive
- Wireless LAN Module
- Wireless WAN Module
- Heat Sink (Discrete)
- Heat Sink (UMA)
- Fan
- DC-In Connector
- RTC Battery
- RJ-45 Door
- I/O Board
- Fingerprint Reader
- Touchpad
- System Board (Top)
- System Board (Bottom)
- Speaker Assembly
- Top Cover with Keyboard
- Display Panel Assembly
- Display Bezel
- Webcam
- Hinges
- Display Panel
- Display Panel Cable
- Wireless WAN Cable
- Dual Wireless WAN and Wireless LAN Antennas
- Wireless LAN Antennas



[Go to External Views](#)

Battery

Base Enclosure

Battery

Memory Modules

M.2 Solid State Drive

Wireless LAN Module

Wireless WAN Module

Heat Sink (Discrete)

Heat Sink (UMA)

Fan

DC-In Connector

RTC Battery

RJ-45 Door

I/O Board

Fingerprint Reader

Touchpad

System Board (Top)

System Board (Bottom)

Speaker Assembly

Top Cover with Keyboard

Display Panel Assembly

Display Bezel

Webcam

Hinges

Display Panel

Display Panel Cable

Wireless WAN Cable

Dual Wireless WAN and Wireless LAN Antennas

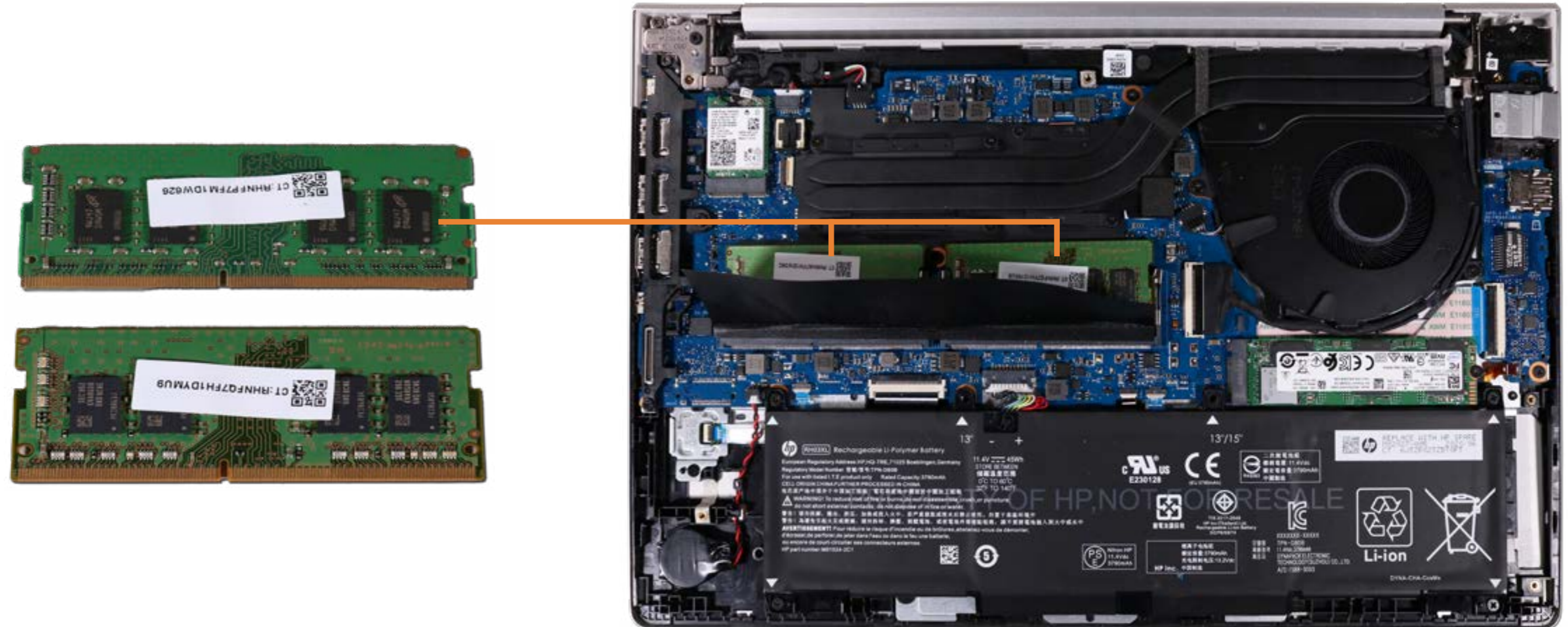
Wireless LAN Antennas



[Go to External Views](#)

Memory Modules

- Base Enclosure
- Battery
- Memory Modules**
- M.2 Solid State Drive
- Wireless LAN Module
- Wireless WAN Module
- Heat Sink (Discrete)
- Heat Sink (UMA)
- Fan
- DC-In Connector
- RTC Battery
- RJ-45 Door
- I/O Board
- Fingerprint Reader
- Touchpad
- System Board (Top)
- System Board (Bottom)
- Speaker Assembly
- Top Cover with Keyboard
- Display Panel Assembly
- Display Bezel
- Webcam
- Hinges
- Display Panel
- Display Panel Cable
- Wireless WAN Cable
- Dual Wireless WAN and Wireless LAN Antennas
- Wireless LAN Antennas



[Go to External Views](#)

M.2 Solid State Drive

- Base Enclosure
- Battery
- Memory Modules
- M.2 Solid State Drive**
- Wireless LAN Module
- Wireless WAN Module
- Heat Sink (Discrete)
- Heat Sink (UMA)
- Fan
- DC-In Connector
- RTC Battery
- RJ-45 Door
- I/O Board
- Fingerprint Reader
- Touchpad
- System Board (Top)
- System Board (Bottom)
- Speaker Assembly
- Top Cover with Keyboard
- Display Panel Assembly
- Display Bezel
- Webcam
- Hinges
- Display Panel
- Display Panel Cable
- Wireless WAN Cable
- Dual Wireless WAN and Wireless LAN Antennas
- Wireless LAN Antennas



[Go to External Views](#)

Wireless LAN Module

- Base Enclosure
- Battery
- Memory Modules
- M.2 Solid State Drive
- Wireless LAN Module**
- Wireless WAN Module
- Heat Sink (Discrete)
- Heat Sink (UMA)
- Fan
- DC-In Connector
- RTC Battery
- RJ-45 Door
- I/O Board
- Fingerprint Reader
- Touchpad
- System Board (Top)
- System Board (Bottom)
- Speaker Assembly
- Top Cover with Keyboard
- Display Panel Assembly
- Display Bezel
- Webcam
- Hinges
- Display Panel
- Display Panel Cable
- Wireless WAN Cable
- Dual Wireless WAN and Wireless LAN Antennas
- Wireless LAN Antennas



[Go to External Views](#)

Wireless WAN Module

- Base Enclosure
- Battery
- Memory Modules
- M.2 Solid State Drive
- Wireless LAN Module
- Wireless WAN Module**
- Heat Sink (Discrete)
- Heat Sink (UMA)
- Fan
- DC-In Connector
- RTC Battery
- RJ-45 Door
- I/O Board
- Fingerprint Reader
- Touchpad
- System Board (Top)
- System Board (Bottom)
- Speaker Assembly
- Top Cover with Keyboard
- Display Panel Assembly
- Display Bezel
- Webcam
- Hinges
- Display Panel
- Display Panel Cable
- Wireless WAN Cable
- Dual Wireless WAN and Wireless LAN Antennas
- Wireless LAN Antennas



[Go to External Views](#)

Heat Sink (Discrete)

- Base Enclosure
- Battery
- Memory Modules
- M.2 Solid State Drive
- Wireless LAN Module
- Wireless WAN Module
- Heat Sink (Discrete)**
- Heat Sink (UMA)
- Fan
- DC-In Connector
- RTC Battery
- RJ-45 Door
- I/O Board
- Fingerprint Reader
- Touchpad
- System Board (Top)
- System Board (Bottom)
- Speaker Assembly
- Top Cover with Keyboard
- Display Panel Assembly
- Display Bezel
- Webcam
- Hinges
- Display Panel
- Display Panel Cable
- Wireless WAN Cable
- Dual Wireless WAN and Wireless LAN Antennas
- Wireless LAN Antennas



[Go to External Views](#)

Heat Sink (UMA)

- Base Enclosure
- Battery
- Memory Modules
- M.2 Solid State Drive
- Wireless LAN Module
- Wireless WAN Module
- Heat Sink (Discrete)
- Heat Sink (UMA)**
- Fan
- DC-In Connector
- RTC Battery
- RJ-45 Door
- I/O Board
- Fingerprint Reader
- Touchpad
- System Board (Top)
- System Board (Bottom)
- Speaker Assembly
- Top Cover with Keyboard
- Display Panel Assembly
- Display Bezel
- Webcam
- Hinges
- Display Panel
- Display Panel Cable
- Wireless WAN Cable
- Dual Wireless WAN and Wireless LAN Antennas
- Wireless LAN Antennas



[Go to External Views](#)

Fan

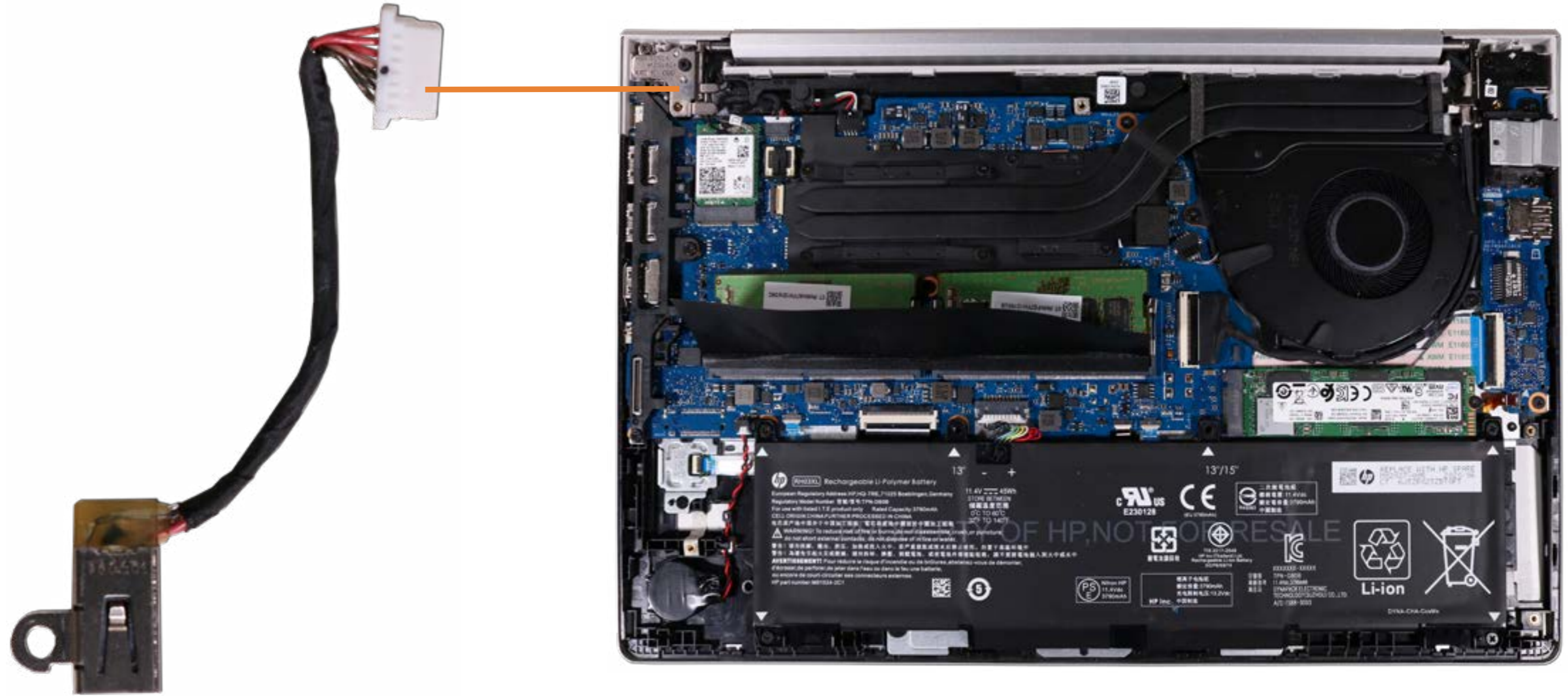
- Base Enclosure
- Battery
- Memory Modules
- M.2 Solid State Drive
- Wireless LAN Module
- Wireless WAN Module
- Heat Sink (Discrete)
- Heat Sink (UMA)
- Fan**
- DC-In Connector
- RTC Battery
- RJ-45 Door
- I/O Board
- Fingerprint Reader
- Touchpad
- System Board (Top)
- System Board (Bottom)
- Speaker Assembly
- Top Cover with Keyboard
- Display Panel Assembly
- Display Bezel
- Webcam
- Hinges
- Display Panel
- Display Panel Cable
- Wireless WAN Cable
- Dual Wireless WAN and Wireless LAN Antennas
- Wireless LAN Antennas



[Go to External Views](#)

DC-In Connector

- Base Enclosure
- Battery
- Memory Modules
- M.2 Solid State Drive
- Wireless LAN Module
- Wireless WAN Module
- Heat Sink (Discrete)
- Heat Sink (UMA)
- Fan
- DC-In Connector**
- RTC Battery
- RJ-45 Door
- I/O Board
- Fingerprint Reader
- Touchpad
- System Board (Top)
- System Board (Bottom)
- Speaker Assembly
- Top Cover with Keyboard
- Display Panel Assembly
- Display Bezel
- Webcam
- Hinges
- Display Panel
- Display Panel Cable
- Wireless WAN Cable
- Dual Wireless WAN and Wireless LAN Antennas
- Wireless LAN Antennas



[Go to External Views](#)

RTC Battery

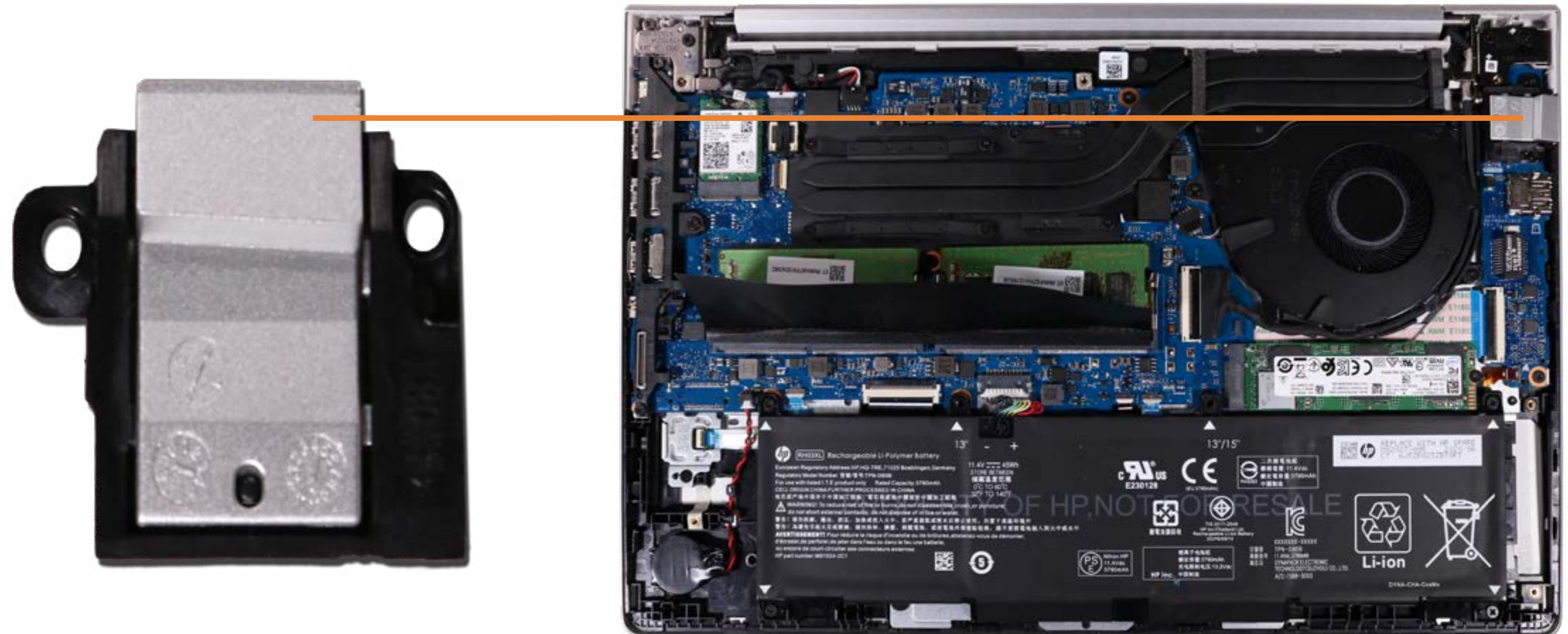
- Base Enclosure
- Battery
- Memory Modules
- M.2 Solid State Drive
- Wireless LAN Module
- Wireless WAN Module
- Heat Sink (Discrete)
- Heat Sink (UMA)
- Fan
- DC-In Connector
- RTC Battery**
- RJ-45 Door
- I/O Board
- Fingerprint Reader
- Touchpad
- System Board (Top)
- System Board (Bottom)
- Speaker Assembly
- Top Cover with Keyboard
- Display Panel Assembly
- Display Bezel
- Webcam
- Hinges
- Display Panel
- Display Panel Cable
- Wireless WAN Cable
- Dual Wireless WAN and Wireless LAN Antennas
- Wireless LAN Antennas



[Go to External Views](#)

RJ-45 Door

- Base Enclosure
- Battery
- Memory Modules
- M.2 Solid State Drive
- Wireless LAN Module
- Wireless WAN Module
- Heat Sink (Discrete)
- Heat Sink (UMA)
- Fan
- DC-In Connector
- RTC Battery
- RJ-45 Door**
- I/O Board
- Fingerprint Reader
- Touchpad
- System Board (Top)
- System Board (Bottom)
- Speaker Assembly
- Top Cover with Keyboard
- Display Panel Assembly
- Display Bezel
- Webcam
- Hinges
- Display Panel
- Display Panel Cable
- Wireless WAN Cable
- Dual Wireless WAN and Wireless LAN Antennas
- Wireless LAN Antennas



[Go to External Views](#)

I/O Board

- Base Enclosure
- Battery
- Memory Modules
- M.2 Solid State Drive
- Wireless LAN Module
- Wireless WAN Module
- Heat Sink (Discrete)
- Heat Sink (UMA)
- Fan
- DC-In Connector
- RTC Battery
- RJ-45 Door
- I/O Board**
- Fingerprint Reader
- Touchpad
- System Board (Top)
- System Board (Bottom)
- Speaker Assembly
- Top Cover with Keyboard
- Display Panel Assembly
- Display Bezel
- Webcam
- Hinges
- Display Panel
- Display Panel Cable
- Wireless WAN Cable
- Dual Wireless WAN and Wireless LAN Antennas
- Wireless LAN Antennas



[Go to External Views](#)

Fingerprint Reader

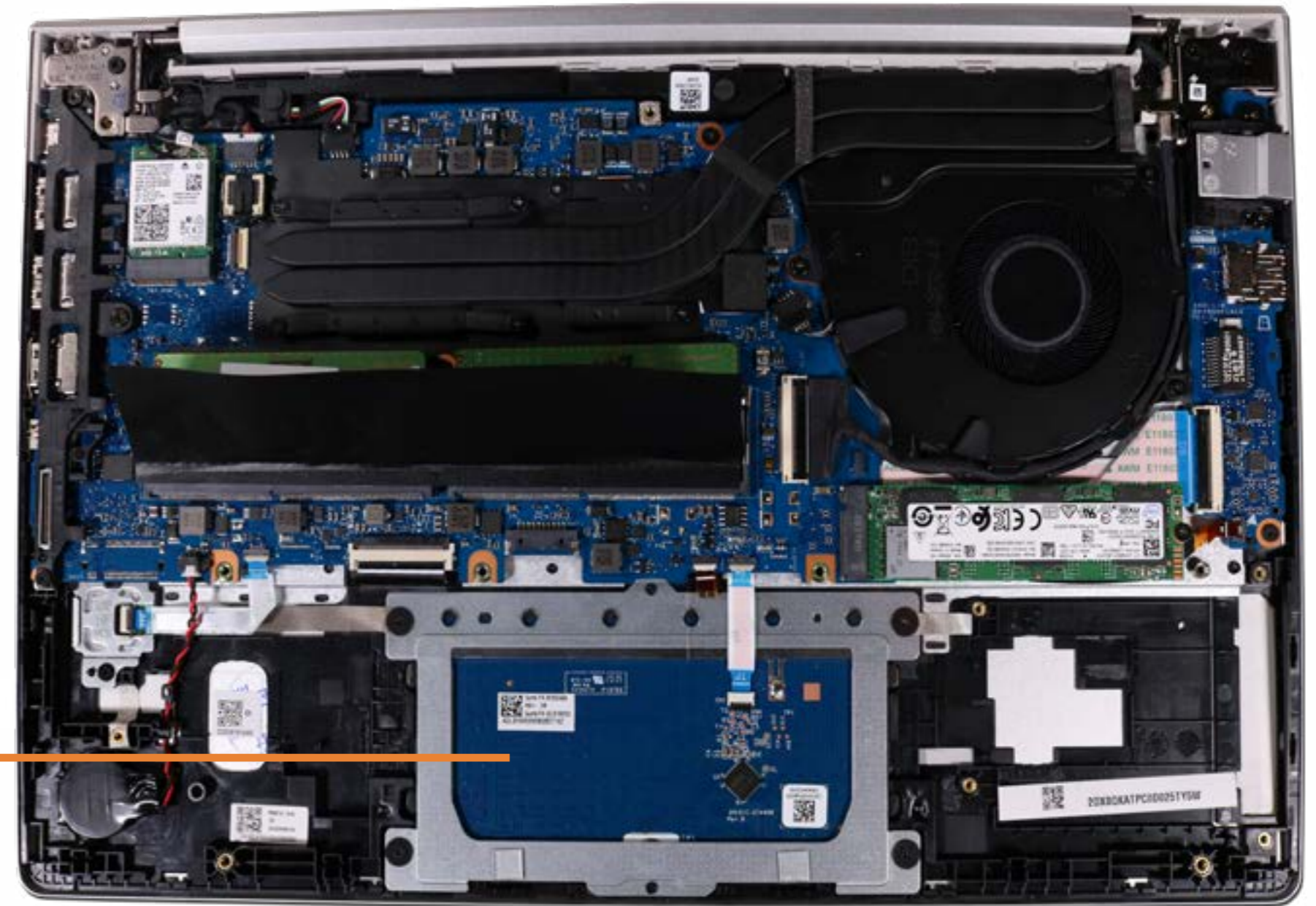
- Base Enclosure
- Battery
- Memory Modules
- M.2 Solid State Drive
- Wireless LAN Module
- Wireless WAN Module
- Heat Sink (Discrete)
- Heat Sink (UMA)
- Fan
- DC-In Connector
- RTC Battery
- RJ-45 Door
- I/O Board
- Fingerprint Reader**
- Touchpad
- System Board (Top)
- System Board (Bottom)
- Speaker Assembly
- Top Cover with Keyboard
- Display Panel Assembly
- Display Bezel
- Webcam
- Hinges
- Display Panel
- Display Panel Cable
- Wireless WAN Cable
- Dual Wireless WAN and Wireless LAN Antennas
- Wireless LAN Antennas



[Go to External Views](#)

Touchpad

- Base Enclosure
- Battery
- Memory Modules
- M.2 Solid State Drive
- Wireless LAN Module
- Wireless WAN Module
- Heat Sink (Discrete)
- Heat Sink (UMA)
- Fan
- DC-In Connector
- RTC Battery
- RJ-45 Door
- I/O Board
- Fingerprint Reader
- Touchpad**
- System Board (Top)
- System Board (Bottom)
- Speaker Assembly
- Top Cover with Keyboard
- Display Panel Assembly
- Display Bezel
- Webcam
- Hinges
- Display Panel
- Display Panel Cable
- Wireless WAN Cable
- Dual Wireless WAN and Wireless LAN Antennas
- Wireless LAN Antennas



Go to External Views

System Board (Top)

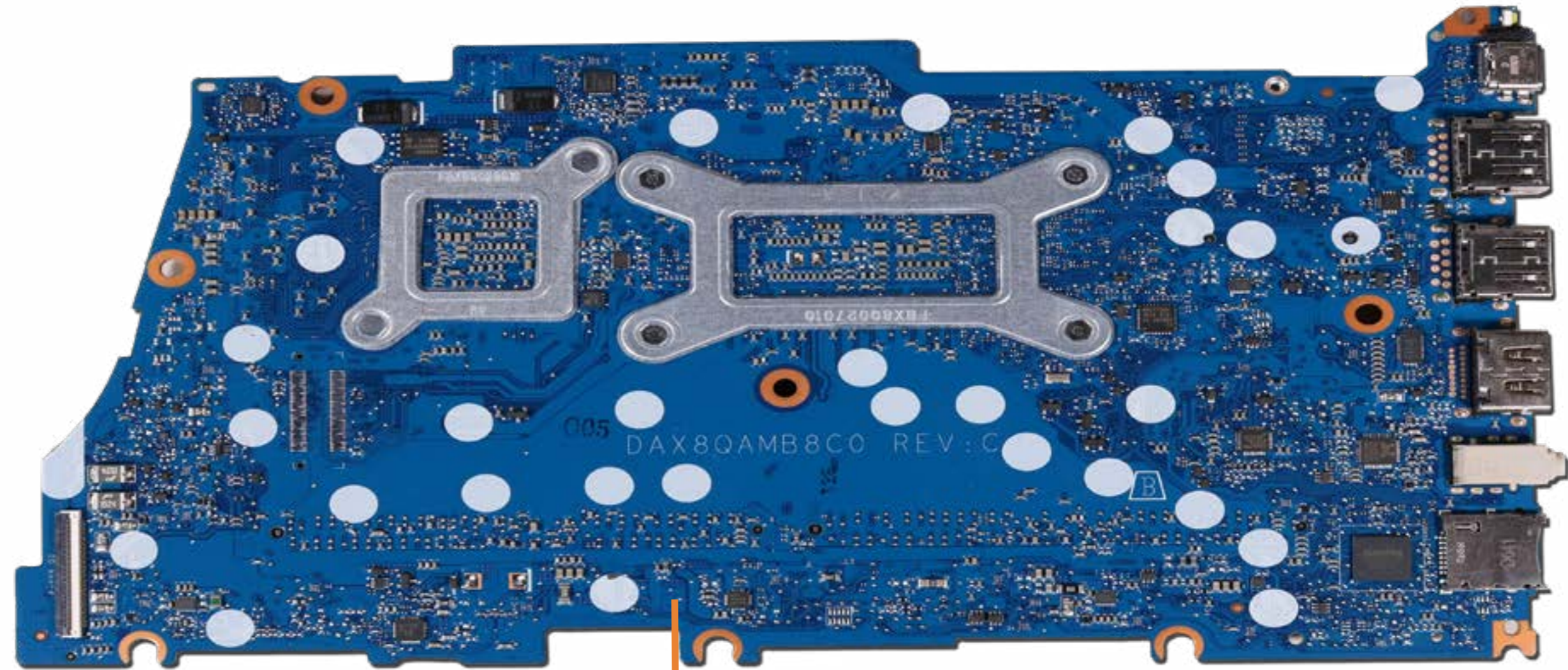
- Base Enclosure
- Battery
- Memory Modules
- M.2 Solid State Drive
- Wireless LAN Module
- Wireless WAN Module
- Heat Sink (Discrete)
- Heat Sink (UMA)
- Fan
- DC-In Connector
- RTC Battery
- RJ-45 Door
- I/O Board
- Fingerprint Reader
- Touchpad
- System Board (Top)**
- System Board (Bottom)
- Speaker Assembly
- Top Cover with Keyboard
- Display Panel Assembly
- Display Bezel
- Webcam
- Hinges
- Display Panel
- Display Panel Cable
- Wireless WAN Cable
- Dual Wireless WAN and Wireless LAN Antennas
- Wireless LAN Antennas



[Go to External Views](#)

System Board (Bottom)

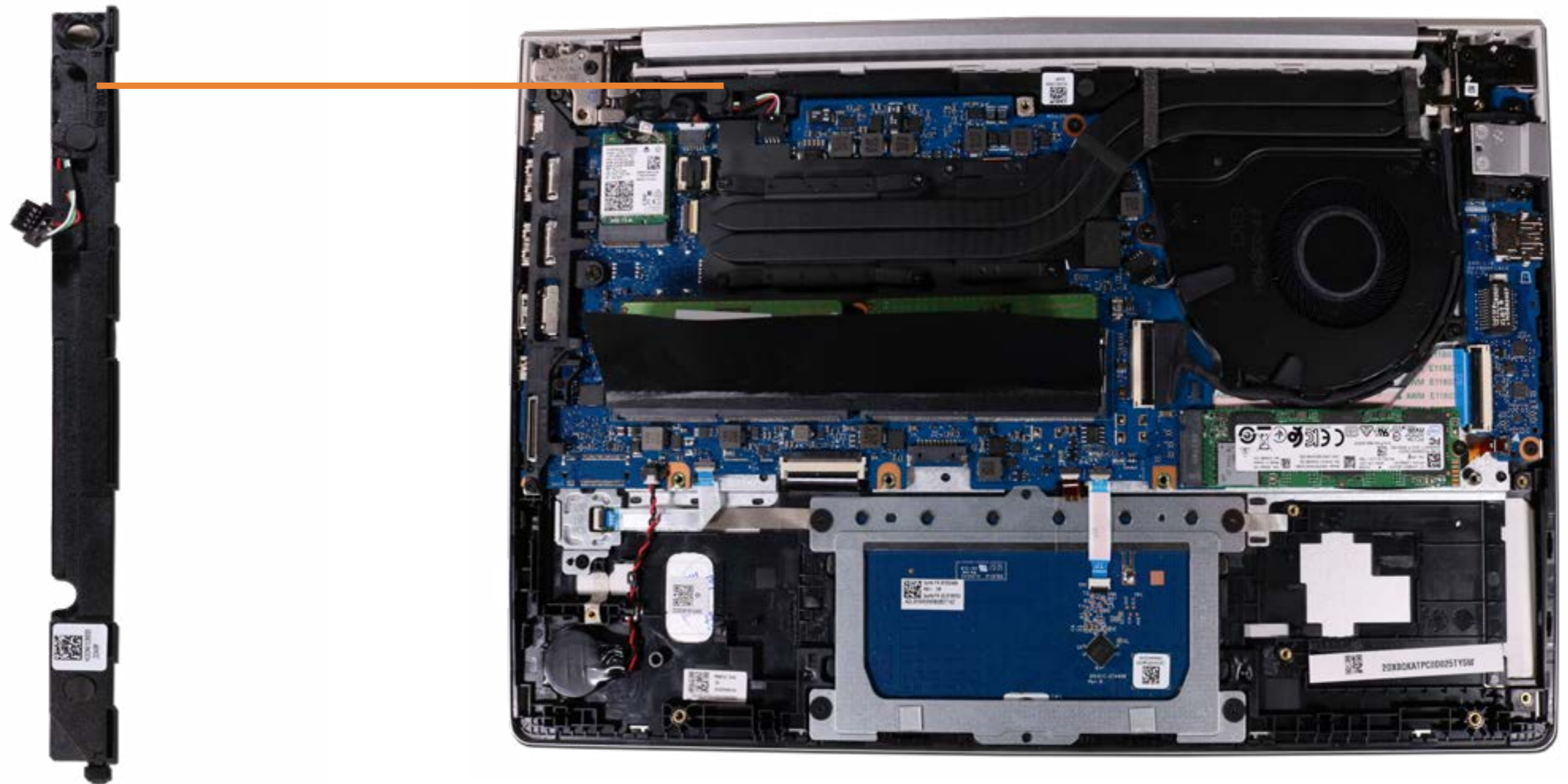
- Base Enclosure
- Battery
- Memory Modules
- M.2 Solid State Drive
- Wireless LAN Module
- Wireless WAN Module
- Heat Sink (Discrete)
- Heat Sink (UMA)
- Fan
- DC-In Connector
- RTC Battery
- RJ-45 Door
- I/O Board
- Fingerprint Reader
- Touchpad
- System Board (Top)
- System Board (Bottom)**
- Speaker Assembly
- Top Cover with Keyboard
- Display Panel Assembly
- Display Bezel
- Webcam
- Hinges
- Display Panel
- Display Panel Cable
- Wireless WAN Cable
- Dual Wireless WAN and Wireless LAN Antennas
- Wireless LAN Antennas



[Go to External Views](#)

Speaker Assembly

- Base Enclosure
- Battery
- Memory Modules
- M.2 Solid State Drive
- Wireless LAN Module
- Wireless WAN Module
- Heat Sink (Discrete)
- Heat Sink (UMA)
- Fan
- DC-In Connector
- RTC Battery
- RJ-45 Door
- I/O Board
- Fingerprint Reader
- Touchpad
- System Board (Top)
- System Board (Bottom)
- Speaker Assembly**
- Top Cover with Keyboard
- Display Panel Assembly
- Display Bezel
- Webcam
- Hinges
- Display Panel
- Display Panel Cable
- Wireless WAN Cable
- Dual Wireless WAN and Wireless LAN Antennas
- Wireless LAN Antennas



[Go to External Views](#)

Top Cover with Keyboard

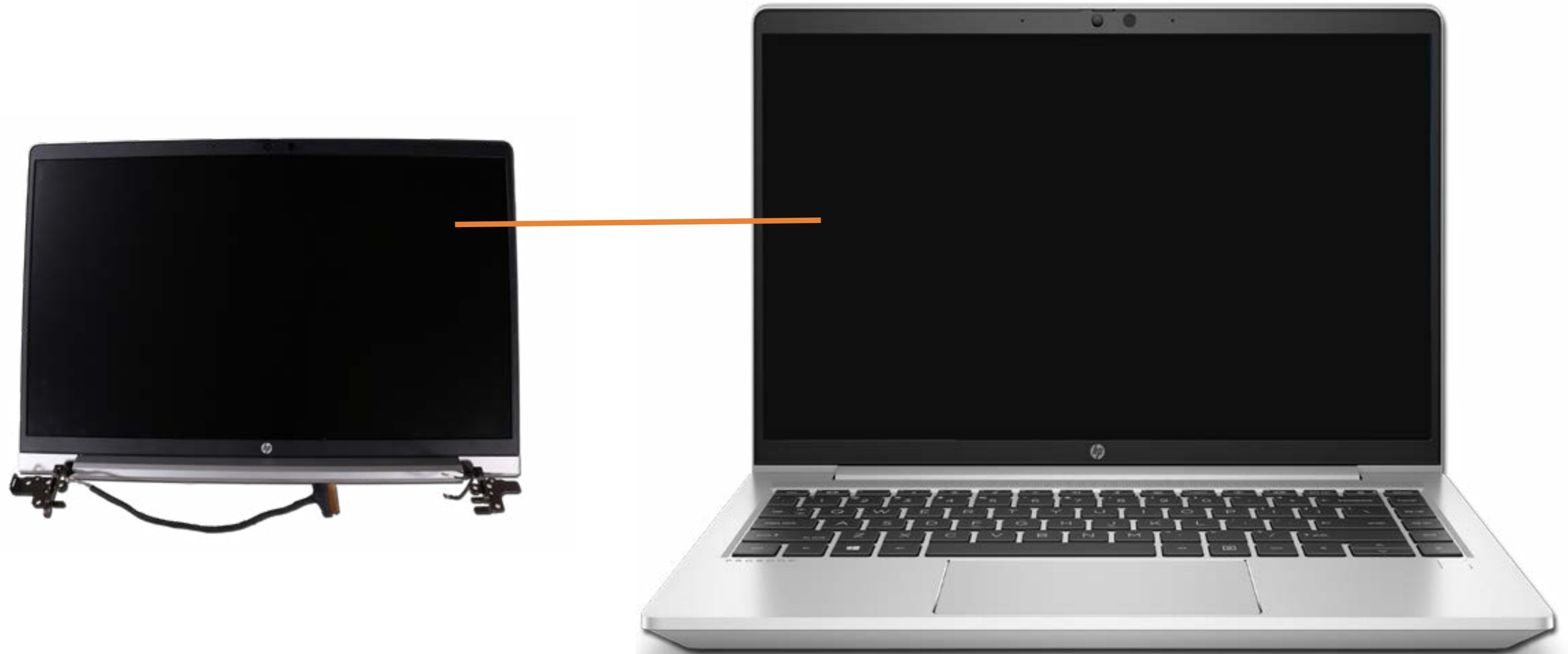
- Base Enclosure
- Battery
- Memory Modules
- M.2 Solid State Drive
- Wireless LAN Module
- Wireless WAN Module
- Heat Sink (Discrete)
- Heat Sink (UMA)
- Fan
- DC-In Connector
- RTC Battery
- RJ-45 Door
- I/O Board
- Fingerprint Reader
- Touchpad
- System Board (Top)
- System Board (Bottom)
- Speaker Assembly
- Top Cover with Keyboard**
- Display Panel Assembly
- Display Bezel
- Webcam
- Hinges
- Display Panel
- Display Panel Cable
- Wireless WAN Cable
- Dual Wireless WAN and Wireless LAN Antennas
- Wireless LAN Antennas



Go to External Views

Display Panel Assembly

- Base Enclosure
- Battery
- Memory Modules
- M.2 Solid State Drive
- Wireless LAN Module
- Wireless WAN Module
- Heat Sink (Discrete)
- Heat Sink (UMA)
- Fan
- DC-In Connector
- RTC Battery
- RJ-45 Door
- I/O Board
- Fingerprint Reader
- Touchpad
- System Board (Top)
- System Board (Bottom)
- Speaker Assembly
- Top Cover with Keyboard
- Display Panel Assembly**
- Display Bezel
- Webcam
- Hinges
- Display Panel
- Display Panel Cable
- Wireless WAN Cable
- Dual Wireless WAN and Wireless LAN Antennas
- Wireless LAN Antennas



[Go to External Views](#)

Display Bezel

- Base Enclosure
- Battery
- Memory Modules
- M.2 Solid State Drive
- Wireless LAN Module
- Wireless WAN Module
- Heat Sink (Discrete)
- Heat Sink (UMA)
- Fan
- DC-In Connector
- RTC Battery
- RJ-45 Door
- I/O Board
- Fingerprint Reader
- Touchpad
- System Board (Top)
- System Board (Bottom)
- Speaker Assembly
- Top Cover with Keyboard
- Display Panel Assembly
- Display Bezel**
- Webcam
- Hinges
- Display Panel
- Display Panel Cable
- Wireless WAN Cable
- Dual Wireless WAN and Wireless LAN Antennas
- Wireless LAN Antennas



[Go to External Views](#)

Webcam

- Base Enclosure
- Battery
- Memory Modules
- M.2 Solid State Drive
- Wireless LAN Module
- Wireless WAN Module
- Heat Sink (Discrete)
- Heat Sink (UMA)
- Fan
- DC-In Connector
- RTC Battery
- RJ-45 Door
- I/O Board
- Fingerprint Reader
- Touchpad
- System Board (Top)
- System Board (Bottom)
- Speaker Assembly
- Top Cover with Keyboard
- Display Panel Assembly
- Display Bezel
- Webcam**
- Hinges
- Display Panel
- Display Panel Cable
- Wireless WAN Cable
- Dual Wireless WAN and Wireless LAN Antennas
- Wireless LAN Antennas



[Go to External Views](#)

Hinges

- Base Enclosure
- Battery
- Memory Modules
- M.2 Solid State Drive
- Wireless LAN Module
- Wireless WAN Module
- Heat Sink (Discrete)
- Heat Sink (UMA)
- Fan
- DC-In Connector
- RTC Battery
- RJ-45 Door
- I/O Board
- Fingerprint Reader
- Touchpad
- System Board (Top)
- System Board (Bottom)
- Speaker Assembly
- Top Cover with Keyboard
- Display Panel Assembly
- Display Bezel
- Webcam
- Hinges**
- Display Panel
- Display Panel Cable
- Wireless WAN Cable
- Dual Wireless WAN and Wireless LAN Antennas
- Wireless LAN Antennas



[Go to External Views](#)

Display Panel

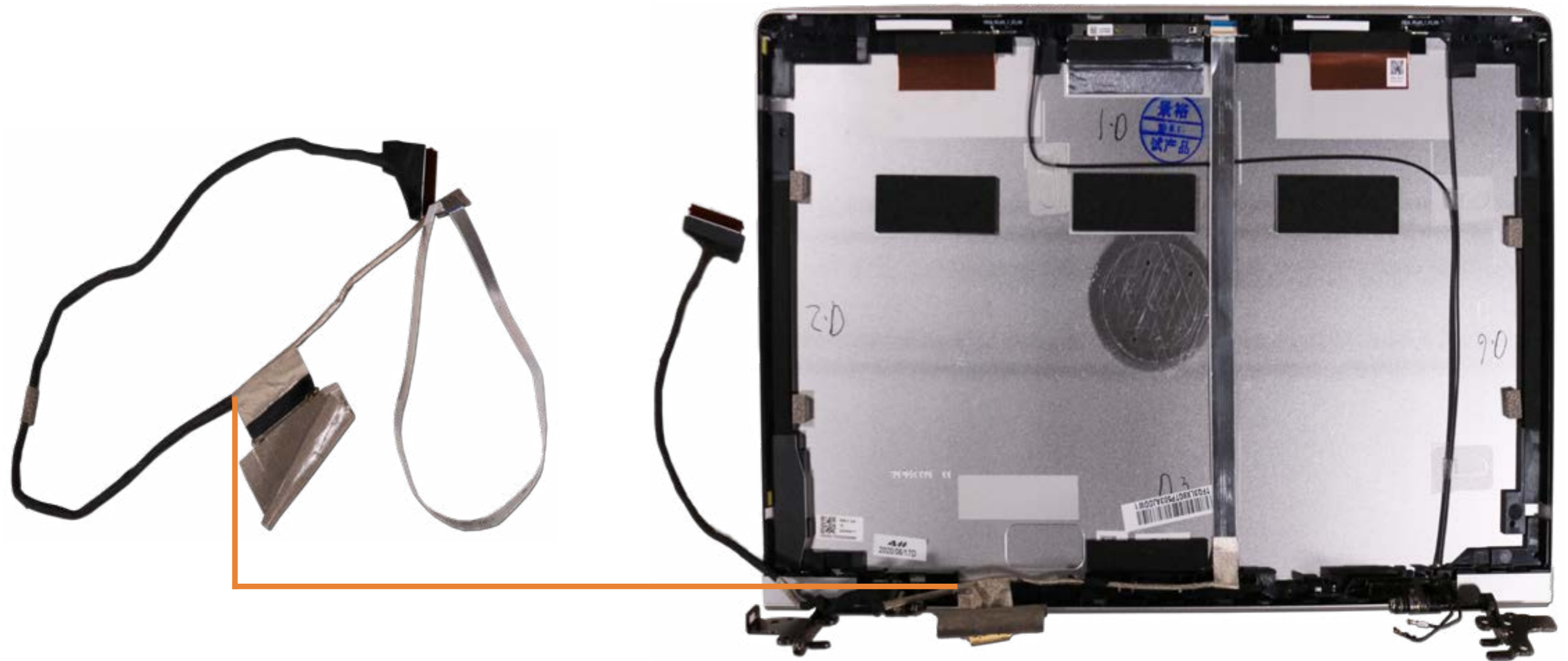
- Base Enclosure
- Battery
- Memory Modules
- M.2 Solid State Drive
- Wireless LAN Module
- Wireless WAN Module
- Heat Sink (Discrete)
- Heat Sink (UMA)
- Fan
- DC-In Connector
- RTC Battery
- RJ-45 Door
- I/O Board
- Fingerprint Reader
- Touchpad
- System Board (Top)
- System Board (Bottom)
- Speaker Assembly
- Top Cover with Keyboard
- Display Panel Assembly
- Display Bezel
- Webcam
- Hinges
- Display Panel**
- Display Panel Cable
- Wireless WAN Cable
- Dual Wireless WAN and Wireless LAN Antennas
- Wireless LAN Antennas



[Go to External Views](#)

Display Panel Cable

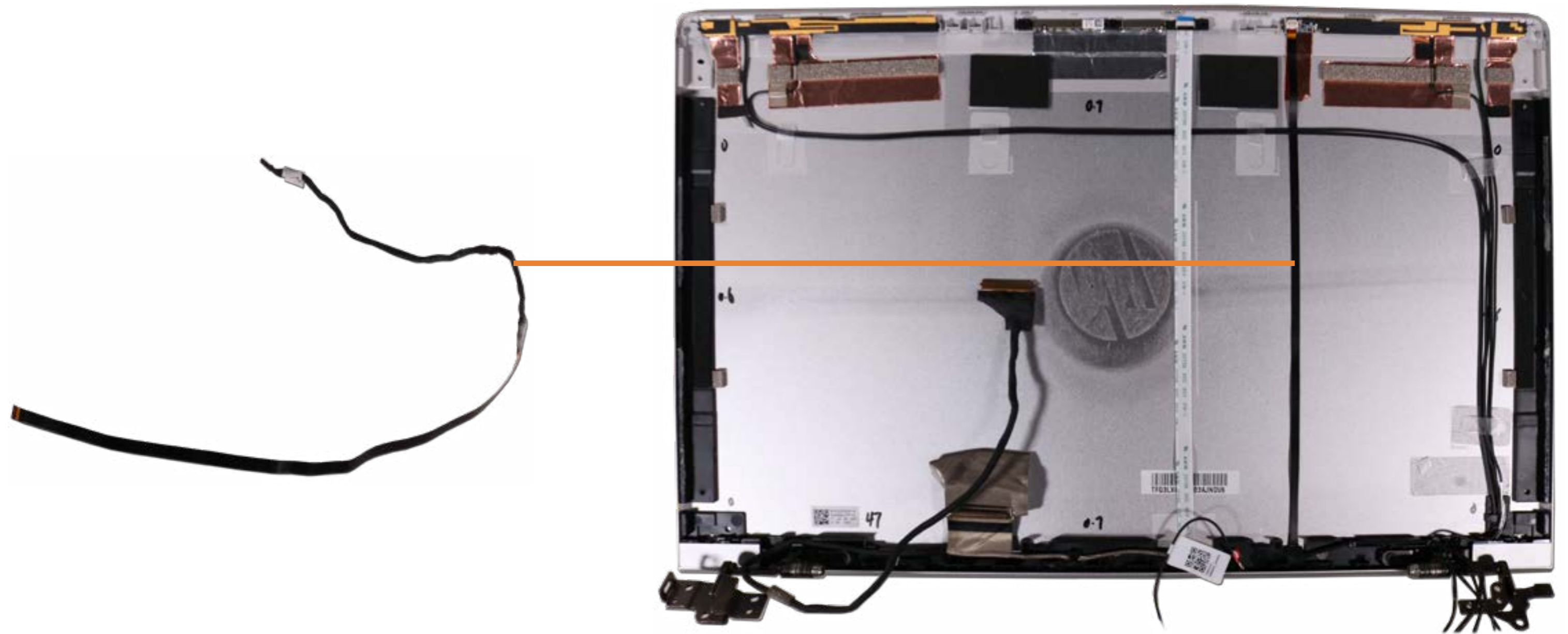
- Base Enclosure
- Battery
- Memory Modules
- M.2 Solid State Drive
- Wireless LAN Module
- Wireless WAN Module
- Heat Sink (Discrete)
- Heat Sink (UMA)
- Fan
- DC-In Connector
- RTC Battery
- RJ-45 Door
- I/O Board
- Fingerprint Reader
- Touchpad
- System Board (Top)
- System Board (Bottom)
- Speaker Assembly
- Top Cover with Keyboard
- Display Panel Assembly
- Display Bezel
- Webcam
- Hinges
- Display Panel
- Display Panel Cable**
- Wireless WAN Cable
- Dual Wireless WAN and Wireless LAN Antennas
- Wireless LAN Antennas



[Go to External Views](#)

Wireless WAN Cable

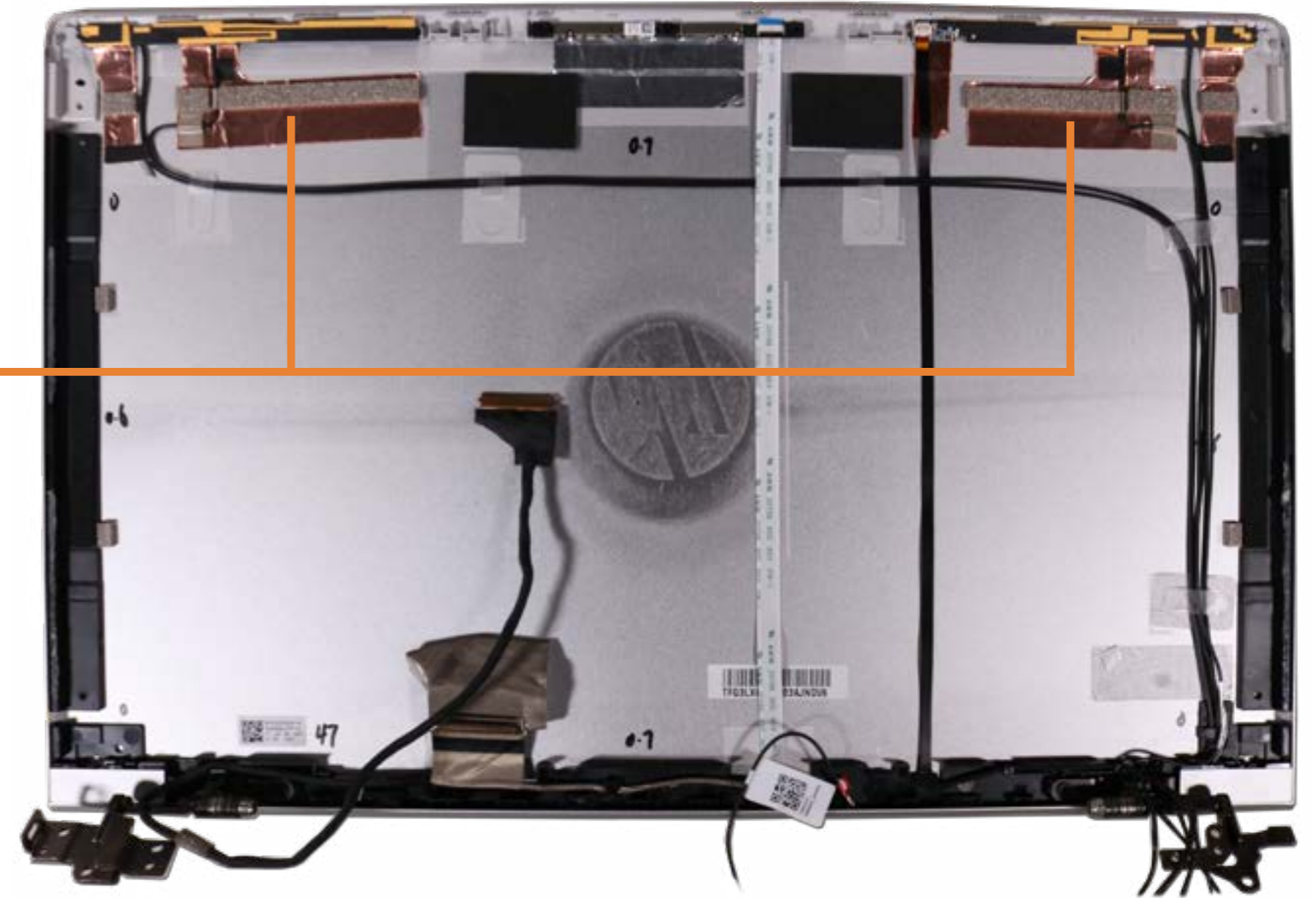
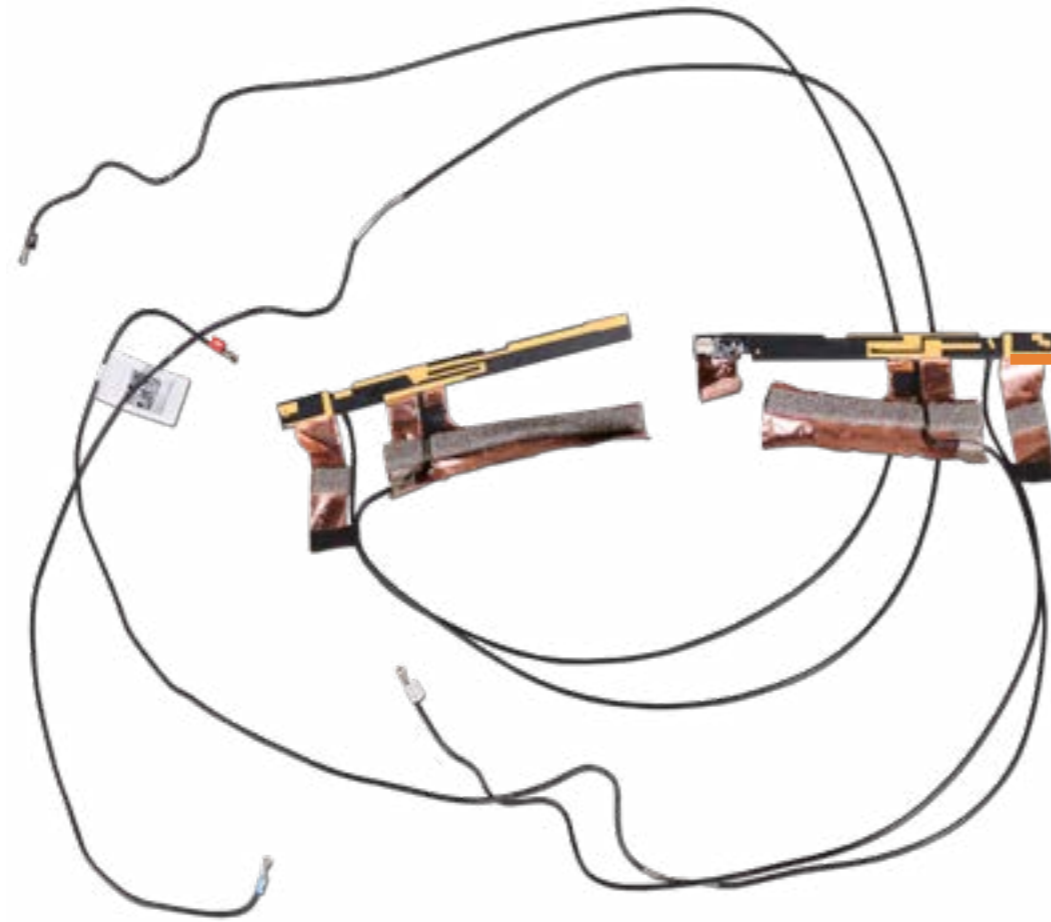
- Base Enclosure
- Battery
- Memory Modules
- M.2 Solid State Drive
- Wireless LAN Module
- Wireless WAN Module
- Heat Sink (Discrete)
- Heat Sink (UMA)
- Fan
- DC-In Connector
- RTC Battery
- RJ-45 Door
- I/O Board
- Fingerprint Reader
- Touchpad
- System Board (Top)
- System Board (Bottom)
- Speaker Assembly
- Top Cover with Keyboard
- Display Panel Assembly
- Display Bezel
- Webcam
- Hinges
- Display Panel
- Display Panel Cable
- Wireless WAN Cable**
- Dual Wireless WAN and Wireless LAN Antennas
- Wireless LAN Antennas



[Go to External Views](#)

Dual Wireless WAN and Wireless LAN Antennas

- Base Enclosure
- Battery
- Memory Modules
- M.2 Solid State Drive
- Wireless LAN Module
- Wireless WAN Module
- Heat Sink (Discrete)
- Heat Sink (UMA)
- Fan
- DC-In Connector
- RTC Battery
- RJ-45 Door
- I/O Board
- Fingerprint Reader
- Touchpad
- System Board (Top)
- System Board (Bottom)
- Speaker Assembly
- Top Cover with Keyboard
- Display Panel Assembly
- Display Bezel
- Webcam
- Hinges
- Display Panel
- Display Panel Cable
- Wireless WAN Cable
- Dual Wireless WAN and Wireless LAN Antennas**
- Wireless LAN Antennas



[Go to External Views](#)

Wireless LAN Antennas

- Base Enclosure
- Battery
- Memory Modules
- M.2 Solid State Drive
- Wireless LAN Module
- Wireless WAN Module
- Heat Sink (Discrete)
- Heat Sink (UMA)
- Fan
- DC-In Connector
- RTC Battery
- RJ-45 Door
- I/O Board
- Fingerprint Reader
- Touchpad
- System Board (Top)
- System Board (Bottom)
- Speaker Assembly
- Top Cover with Keyboard
- Display Panel Assembly
- Display Bezel
- Webcam
- Hinges
- Display Panel
- Display Panel Cable
- Wireless WAN Cable
- Dual Wireless WAN and Wireless LAN Antennas
- Wireless LAN Antennas**



[Go to External Views](#)