

# Interactive Part Locator

## HP G6 ProOne AiO 600

Welcome to the interactive part locator for the  
HP G6 ProOne AiO 600

### Here's how to use it...

[External Views](#) (Click the link to navigate to the views)

On this page you will find large icons of each of the external views of this product. To view a specific view in greater detail, simply click that view.

[Parts List](#) (Click the link to navigate to the parts)

On this page, you will find a list of all of the replaceable parts for this product. To view a specific part and its location in the product, click the part name in the list.

**That's it! On every page there is a link that brings you back to either the External Views or the Parts List, enabling you to navigate to whatever view or part you wish to review.**

# External Views

Front

Left

Right

Rear

Internal

# Parts List

# Front View



# Left View



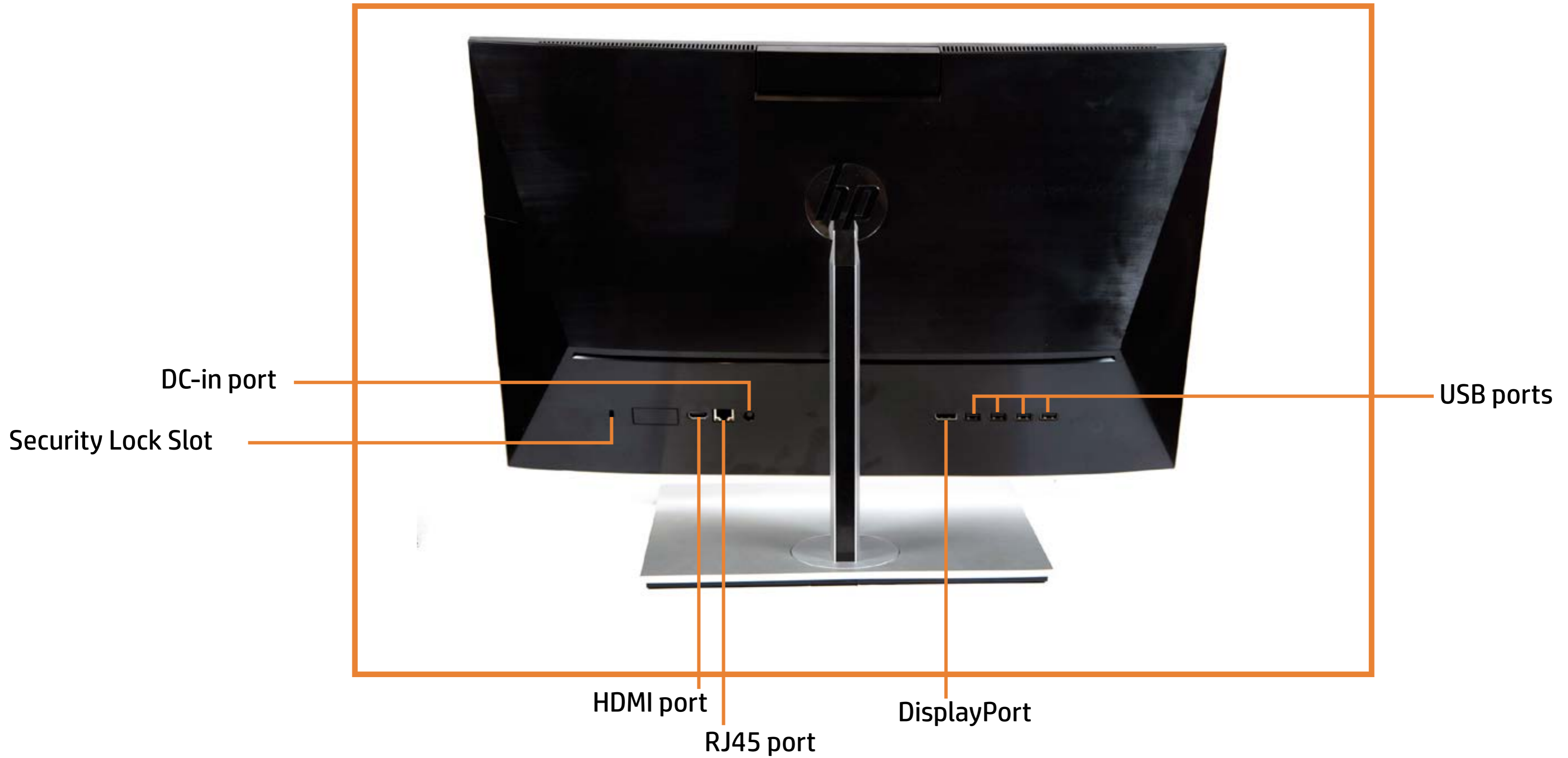
Audio Jack

# Right View

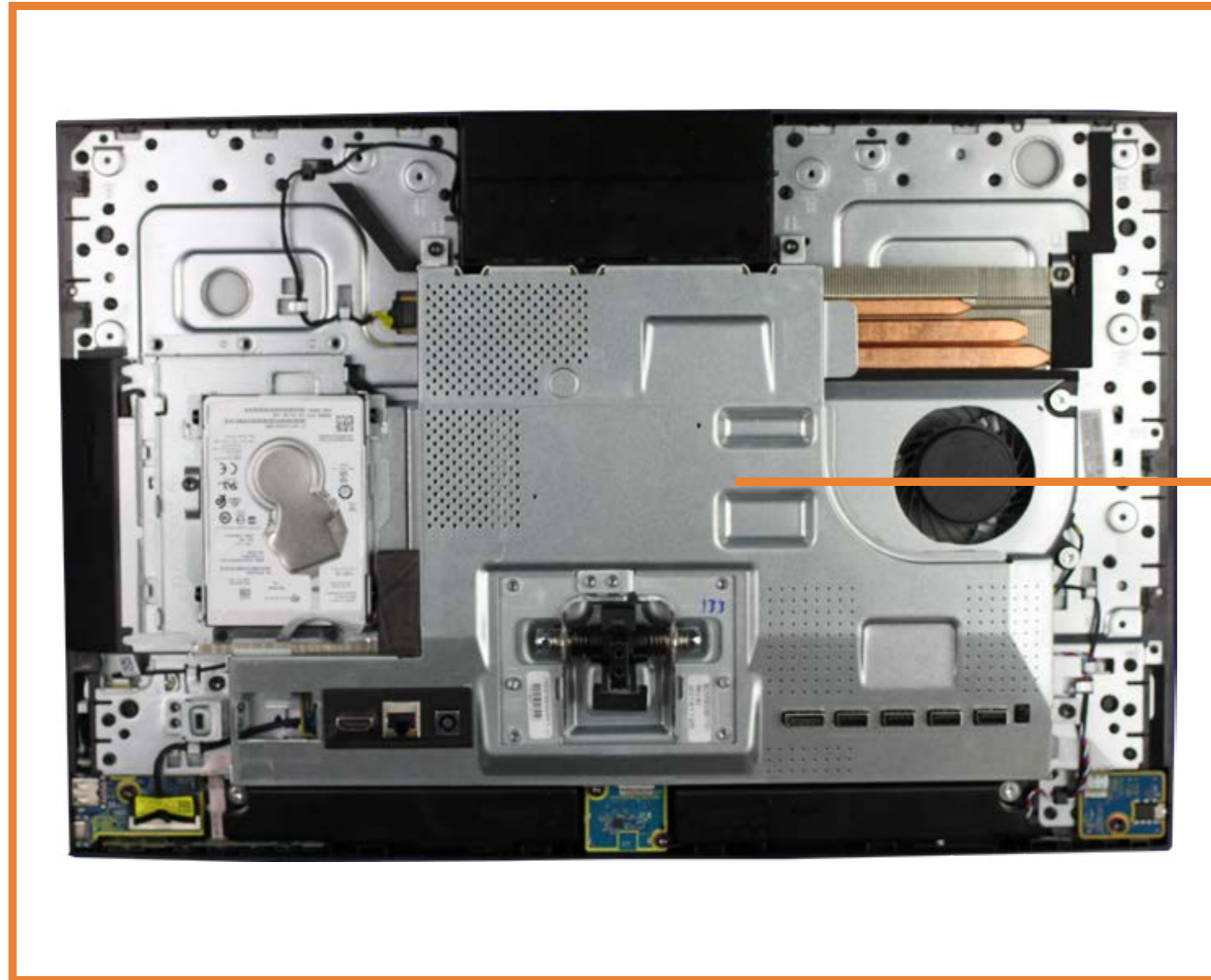


USB port  
USB Type-C port

# Rear View



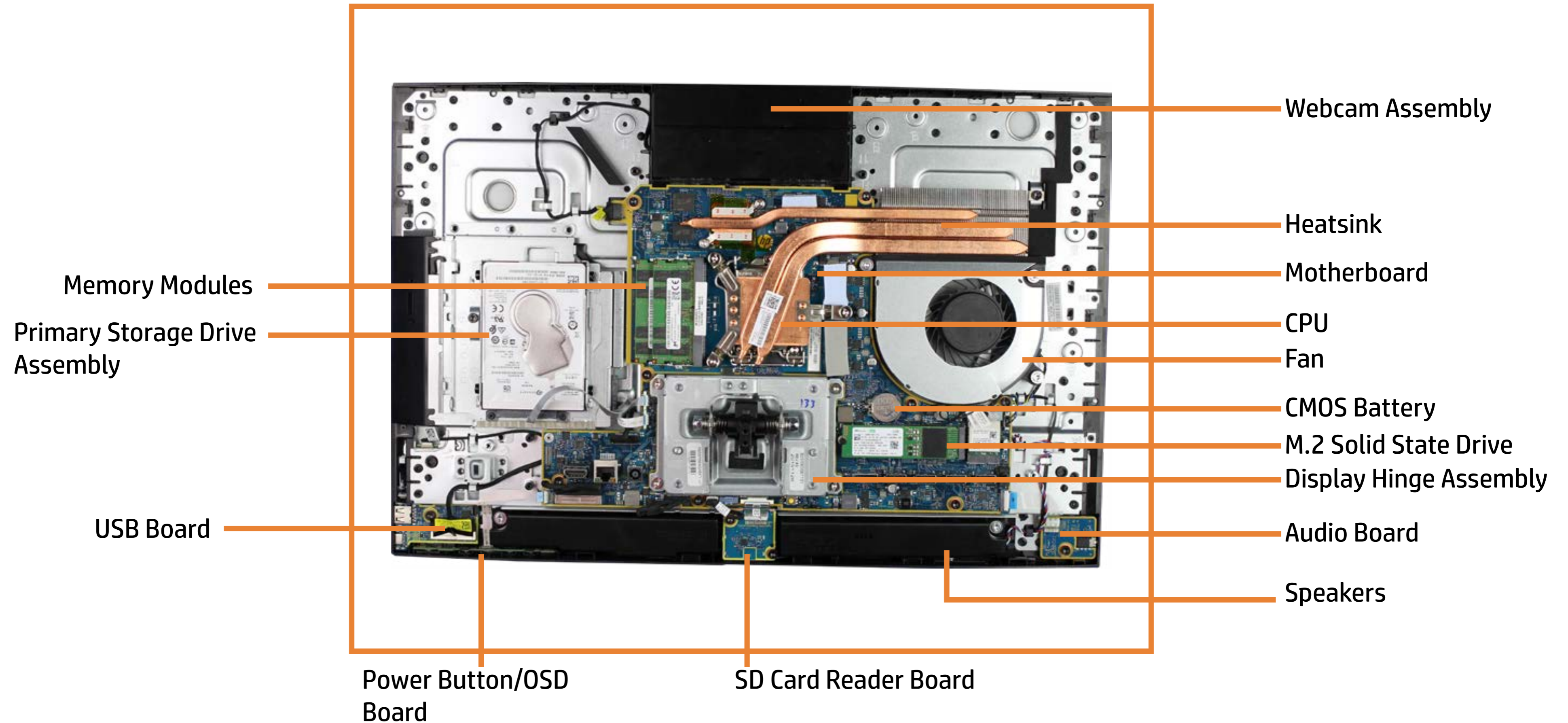
# Internal View 1



Motherboard Shield



# Internal View 2



# Display Stand

Display Stand



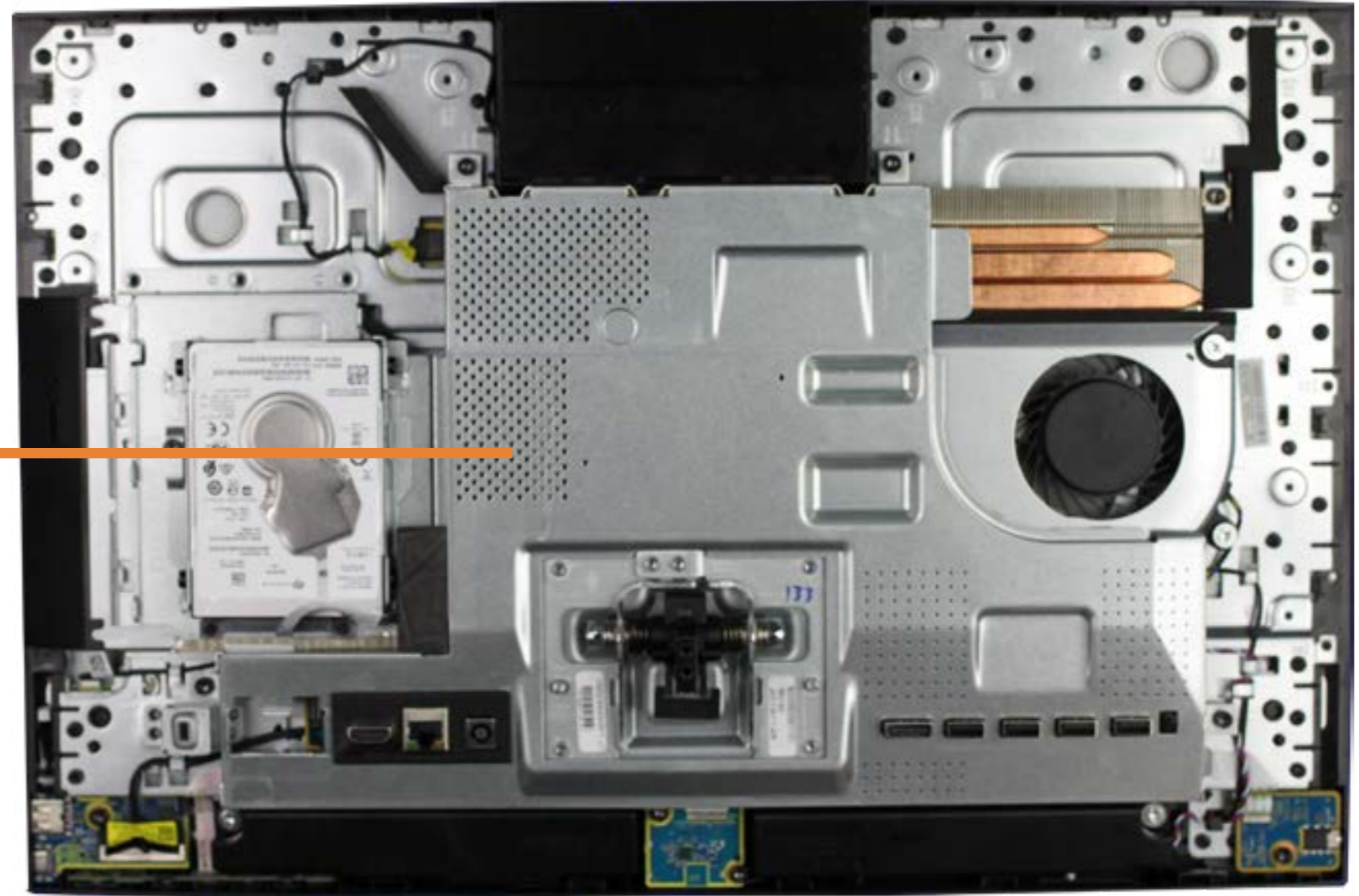
# Rear Cover

Rear Cover



# Motherboard Shield

Motherboard Shield



# Primary Storage Drive Assembly

Primary Storage Drive Assembly



# USB Board

USB Board



# Webcam Assembly

Webcam Assembly



# Power Button/OSD Board



Power Button/OSD Board



# Memory Module(s)

Memory Module(s)



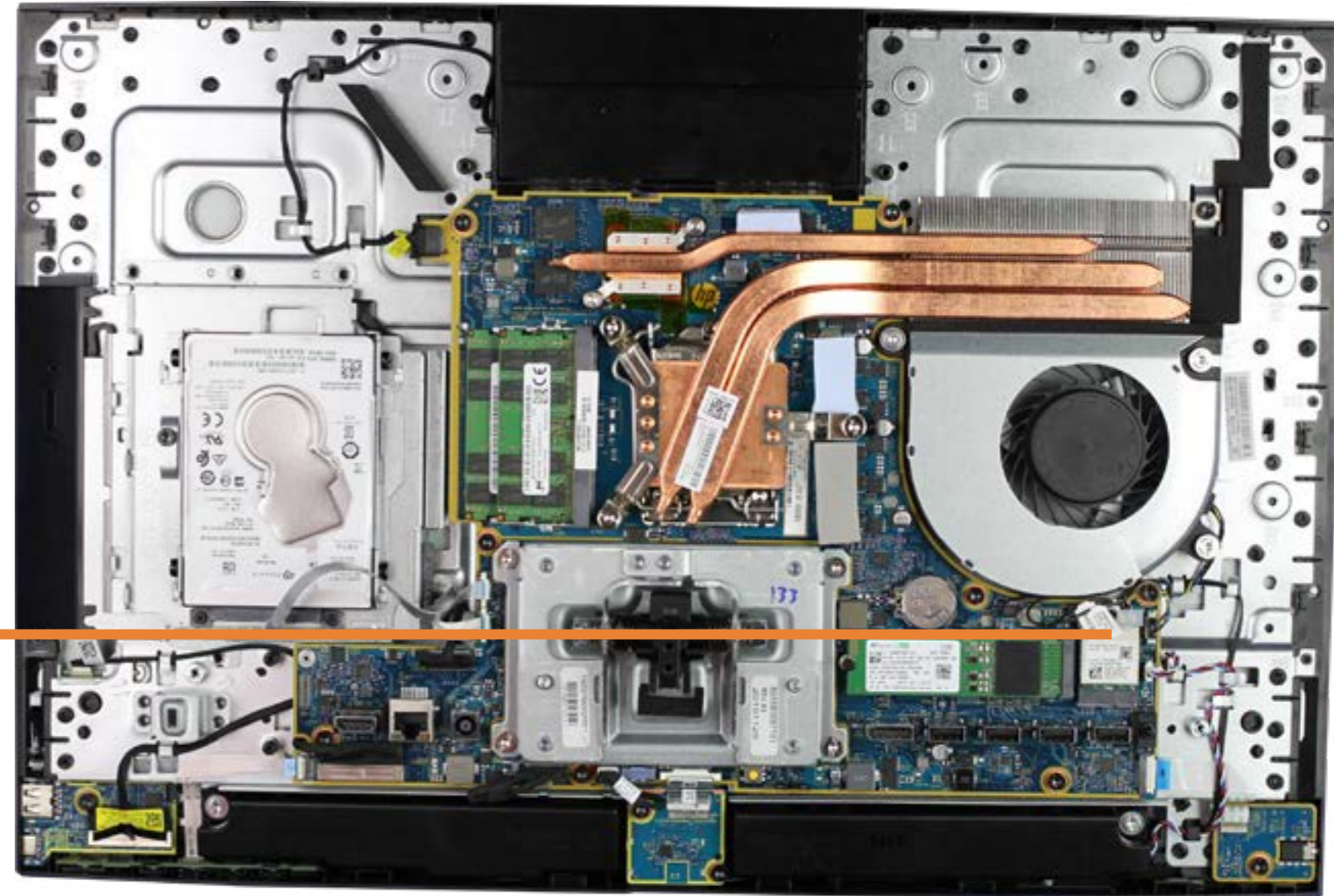
# M.2 Solid State Drive

M.2 Solid State Drive



# Wireless LAN Module

Wireless LAN Module



Fan



Fan

# Audio Board



Audio Board

# SD Card Reader Board



SD Card Reader Board

# Speakers



Speakers



# Optical Drive

Optical Drive





# Display Hinge Assembly

Display Hinge Assembly



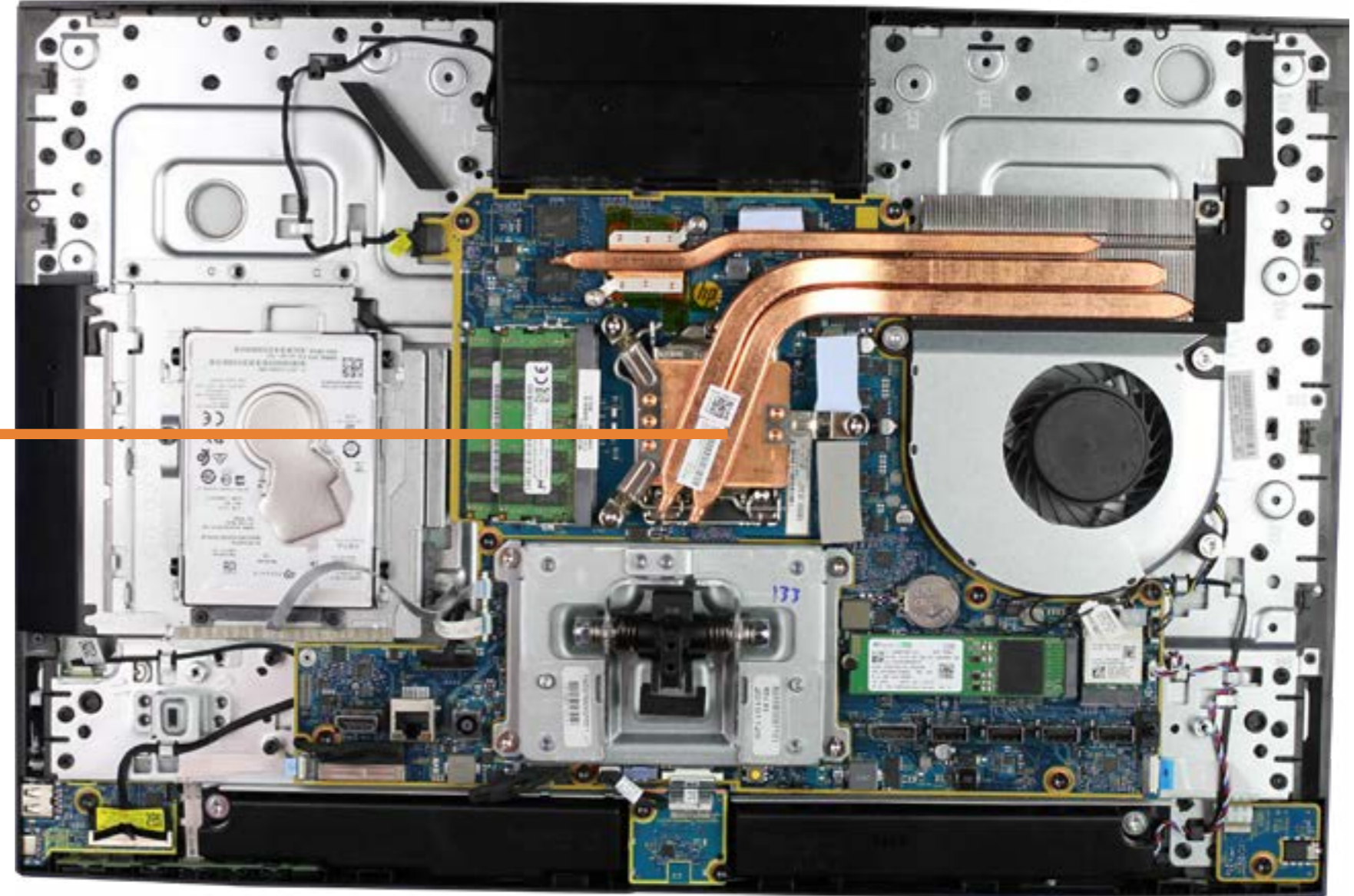
# Heatsink

Heatsink



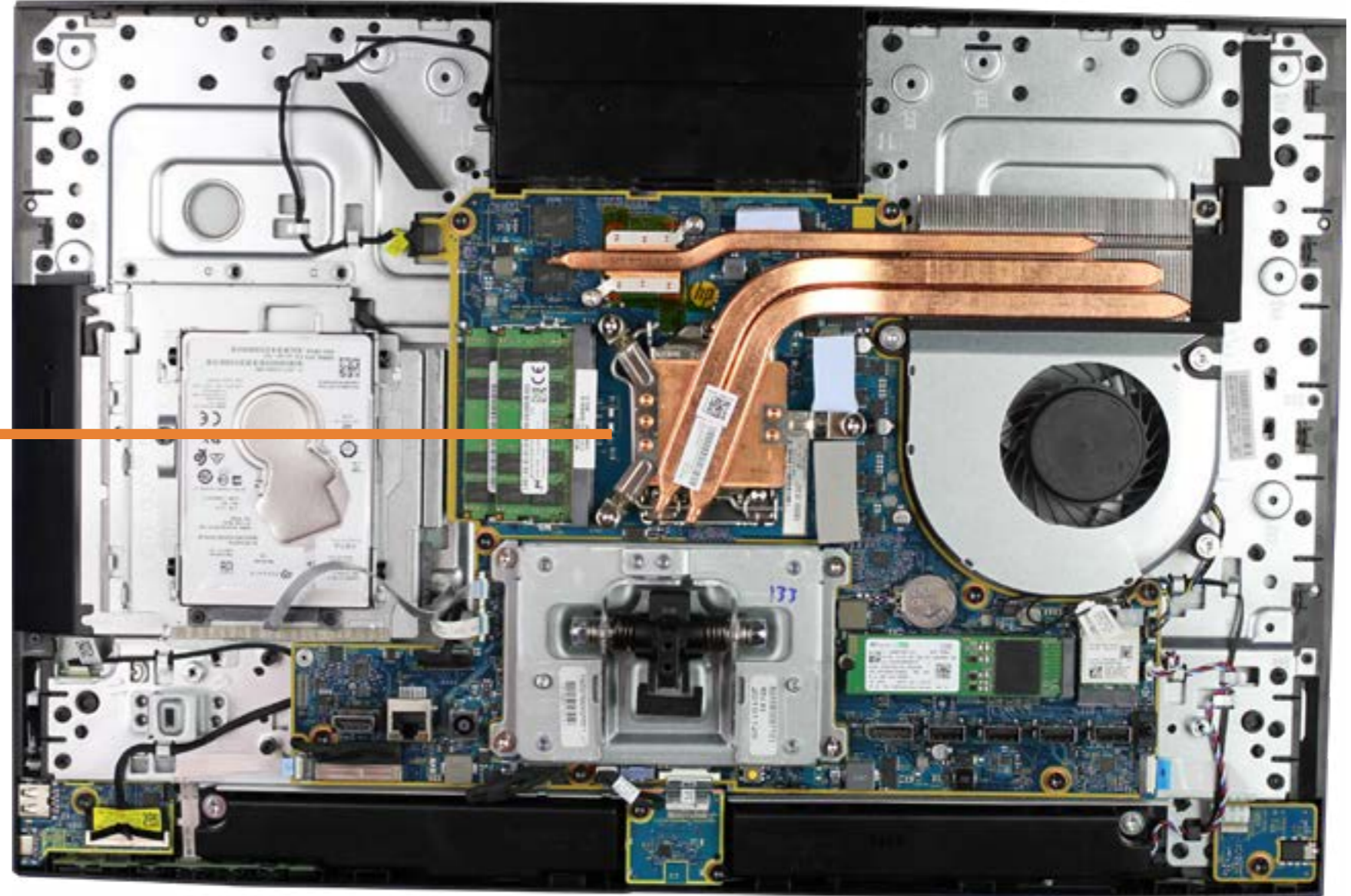
CPU(Intel)

CPU(Intel)



# Motherboard

Motherboard



# Display Panel

Display Panel

