

Interactive Part Locator

HP G6 ProOne AiO 400

Welcome to the interactive part locator for the
HP G6 ProOne AiO 400

Here's how to use it...

[External Views](#) (Click the link to navigate to the views)

On this page you will find large icons of each of the external views of this product. To view a specific view in greater detail, simply click that view.

[Parts List](#) (Click the link to navigate to the parts)

On this page, you will find a list of all of the replaceable parts for this product. To view a specific part and its location in the product, click the part name in the list.

That's it! On every page there is a link that brings you back to either the External Views or the Parts List, enabling you to navigate to whatever view or part you wish to review.

External Views

Front

Left

Right

Rear

Internal

Parts List

Front View



Left View



Audio Jack

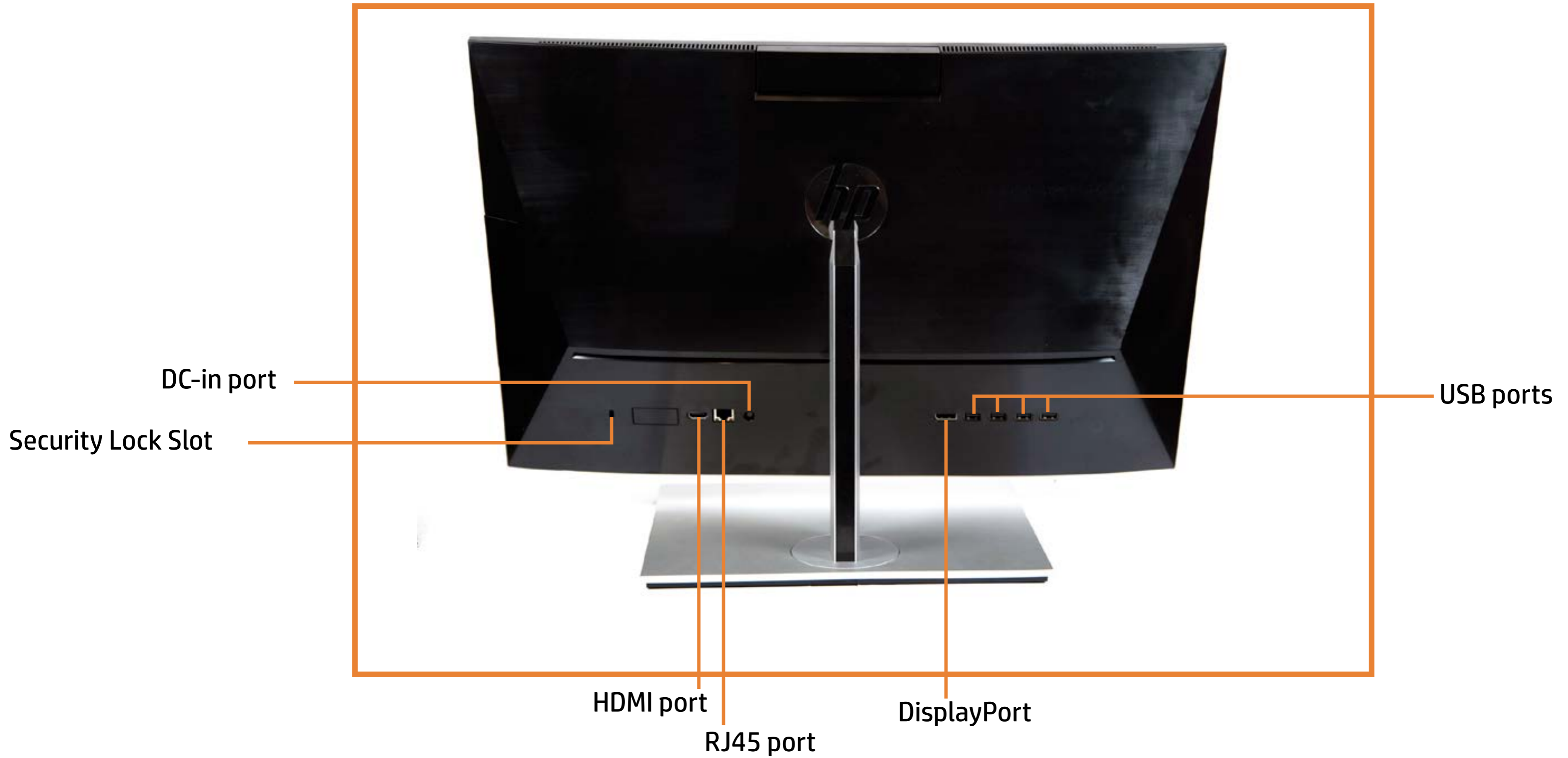


Right View

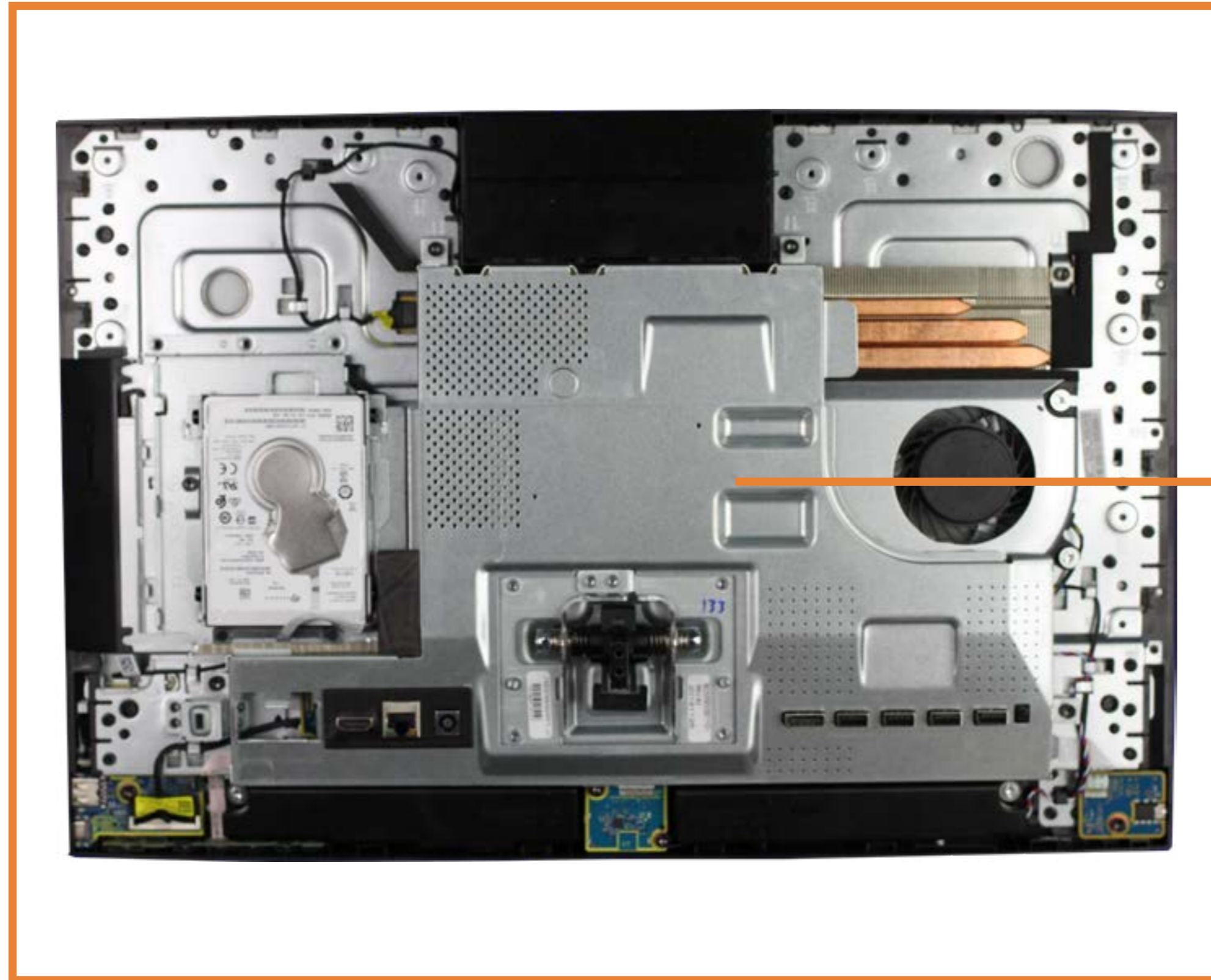


USB port
USB Type-C port

Rear View

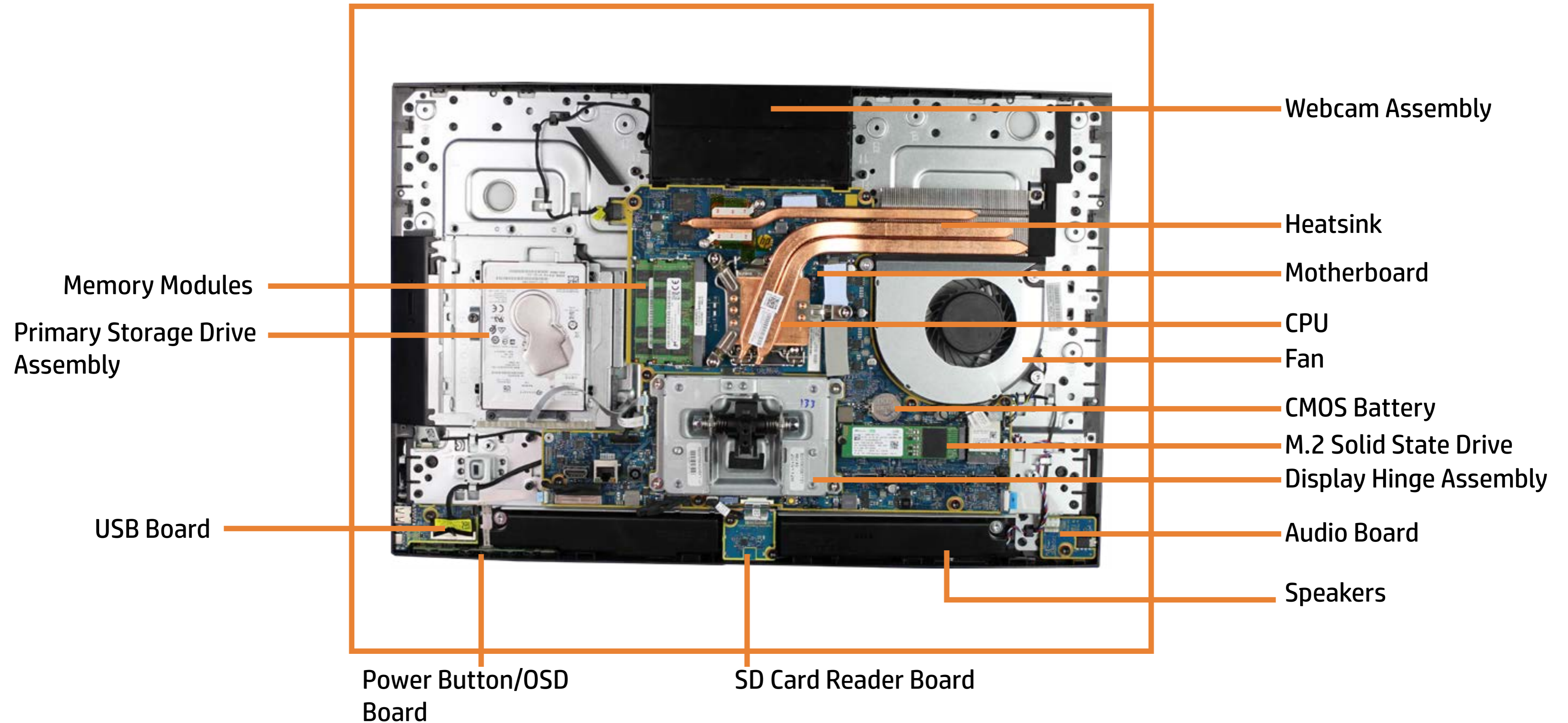


Internal View 1



Motherboard Shield

Internal View 2



Display Stand

Display Stand



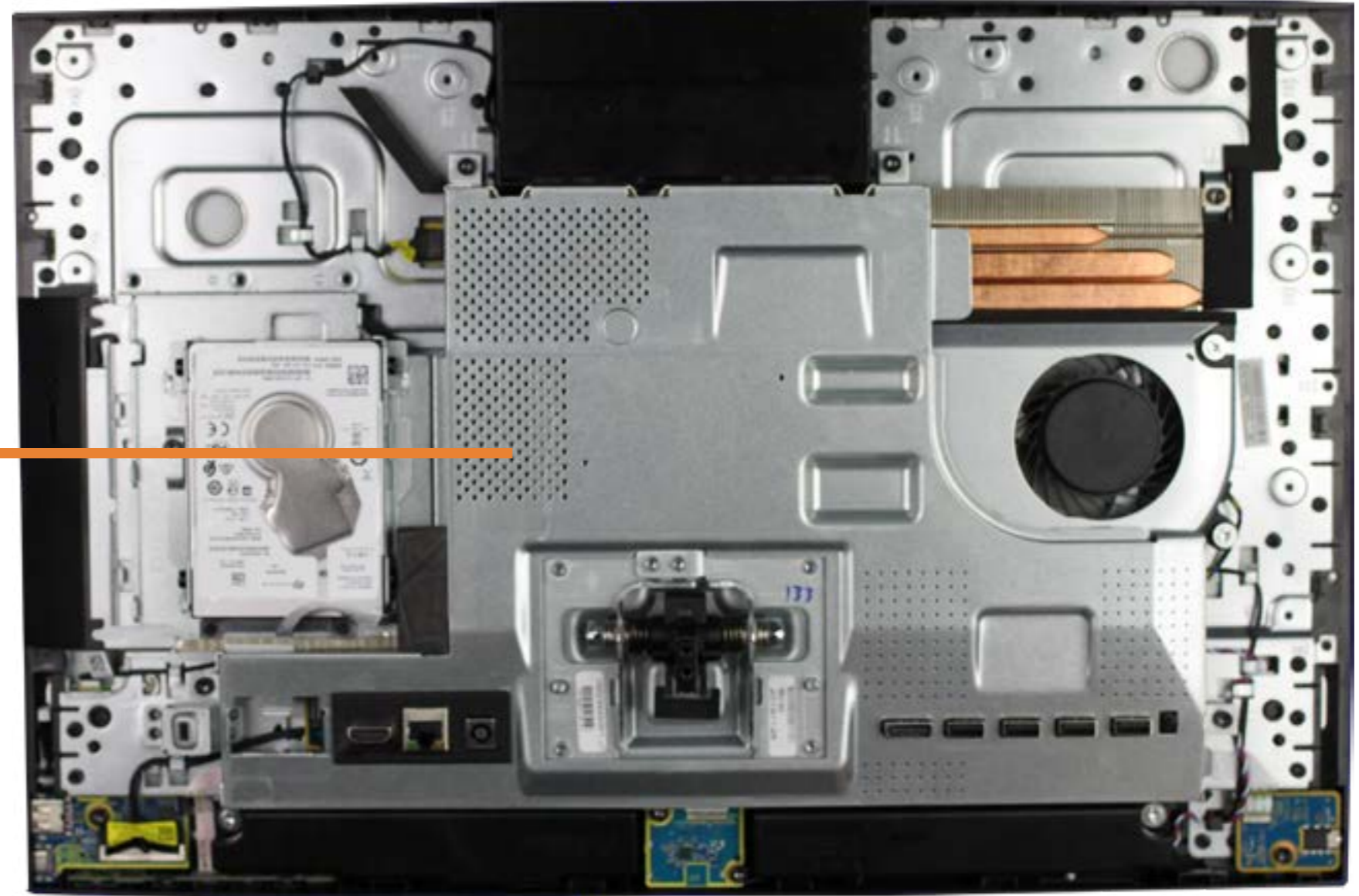
Rear Cover

Rear Cover



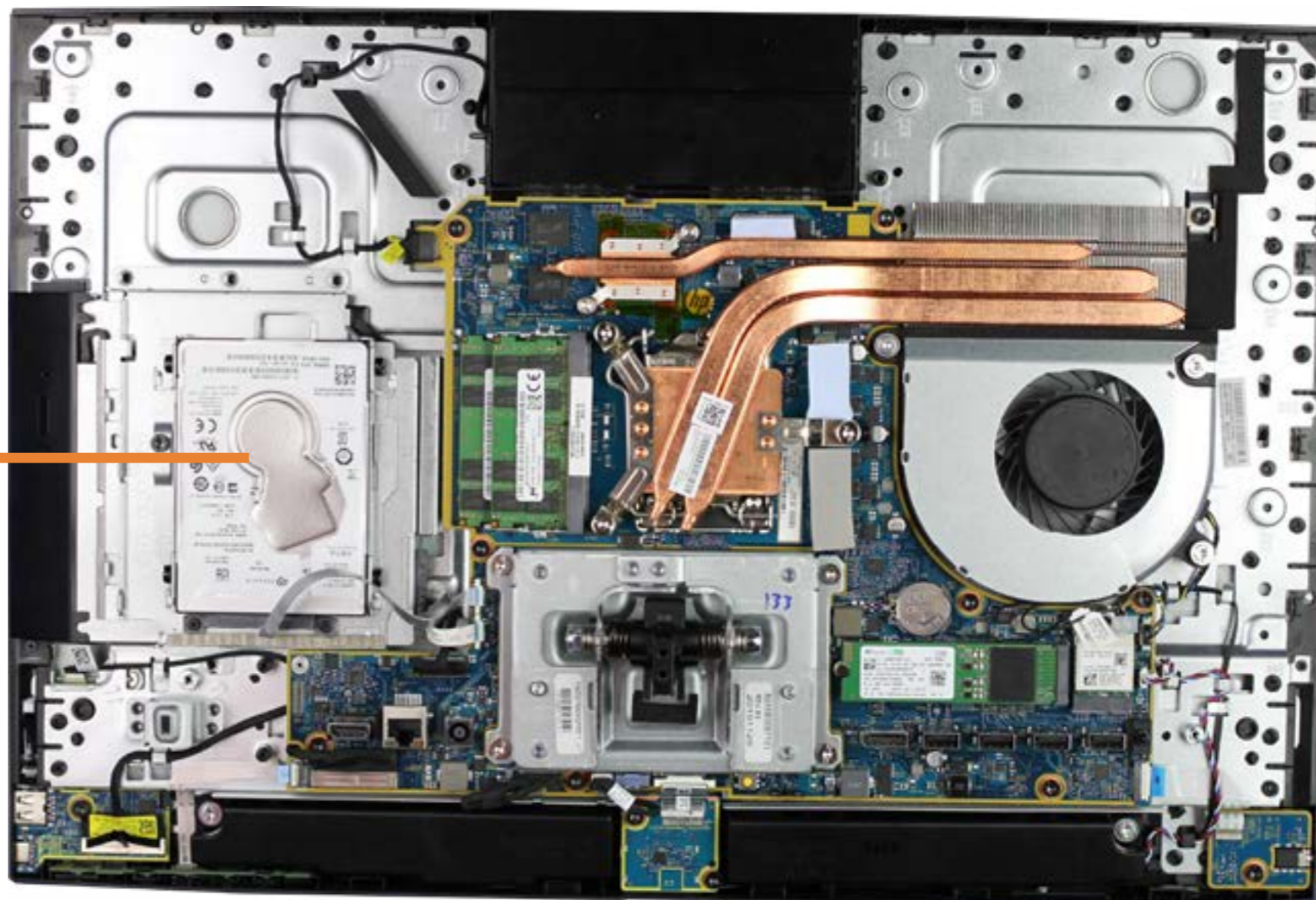
Motherboard Shield

Motherboard Shield



Primary Storage Drive Assembly

Primary Storage Drive Assembly



USB Board



USB Board

Webcam Assembly

Webcam Assembly



Power Button/OSD Board



Power Button/OSD Board

Memory Module(s)

Memory Module(s)



M.2 Solid State Drive

M.2 Solid State Drive



Wireless LAN Module

Wireless LAN Module



Fan



Fan

Audio Board



Audio Board

SD Card Reader Board



SD Card Reader Board

Speakers



Speakers



Optical Drive

Optical Drive



Display Hinge Assembly

Display Hinge Assembly



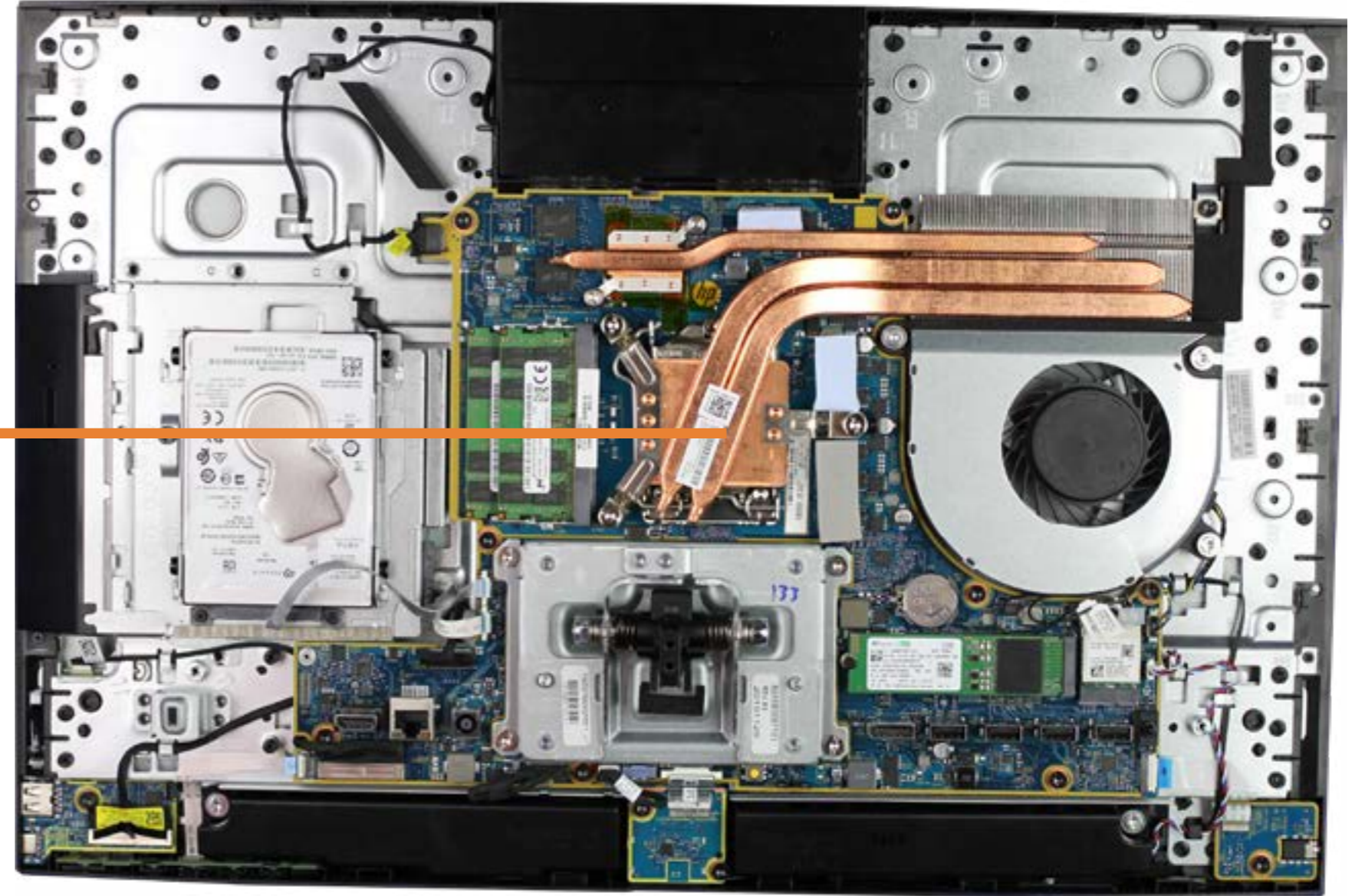
Heatsink

Heatsink



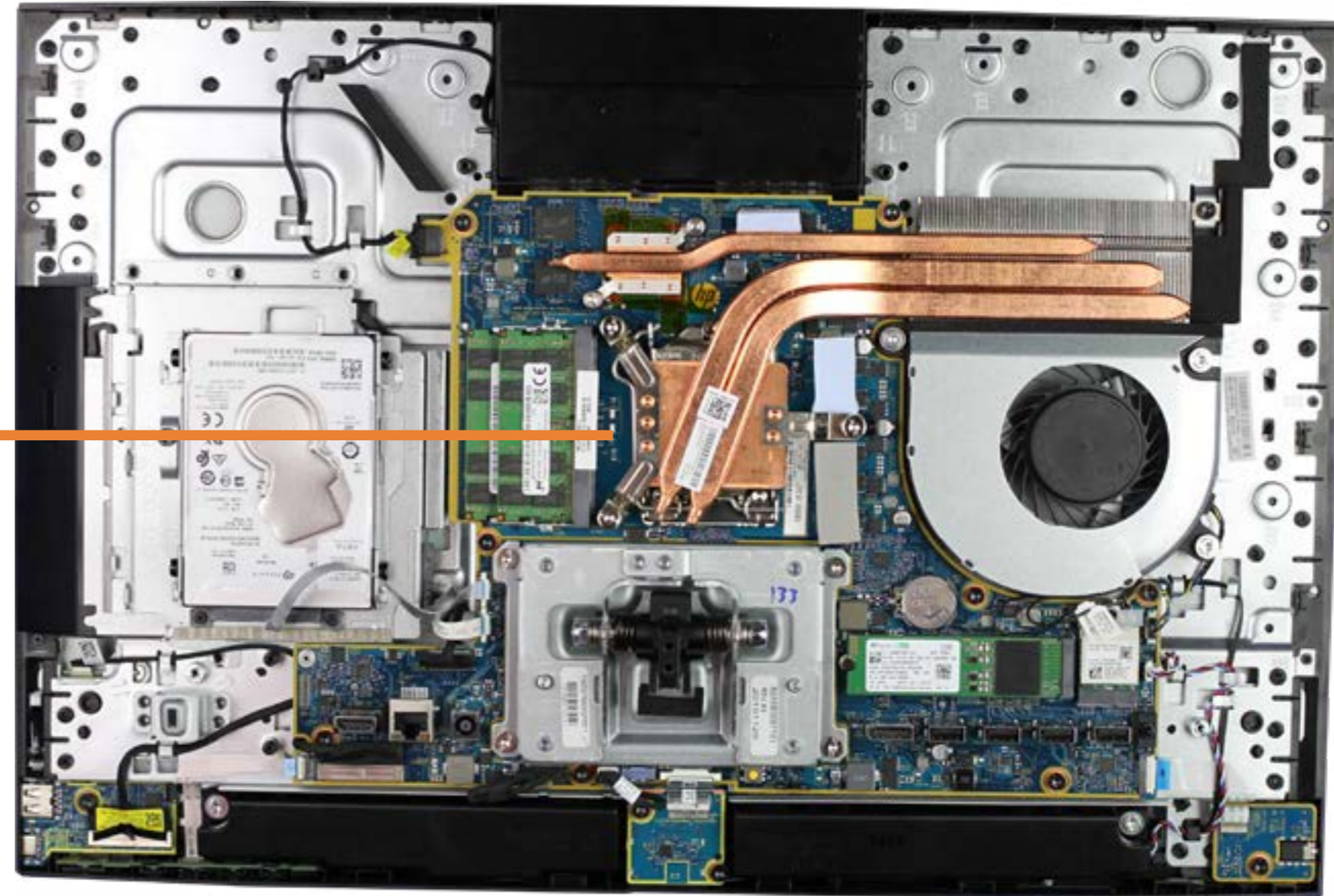
CPU(Intel)

CPU(Intel)



Motherboard

Motherboard



Display Panel

Display Panel

