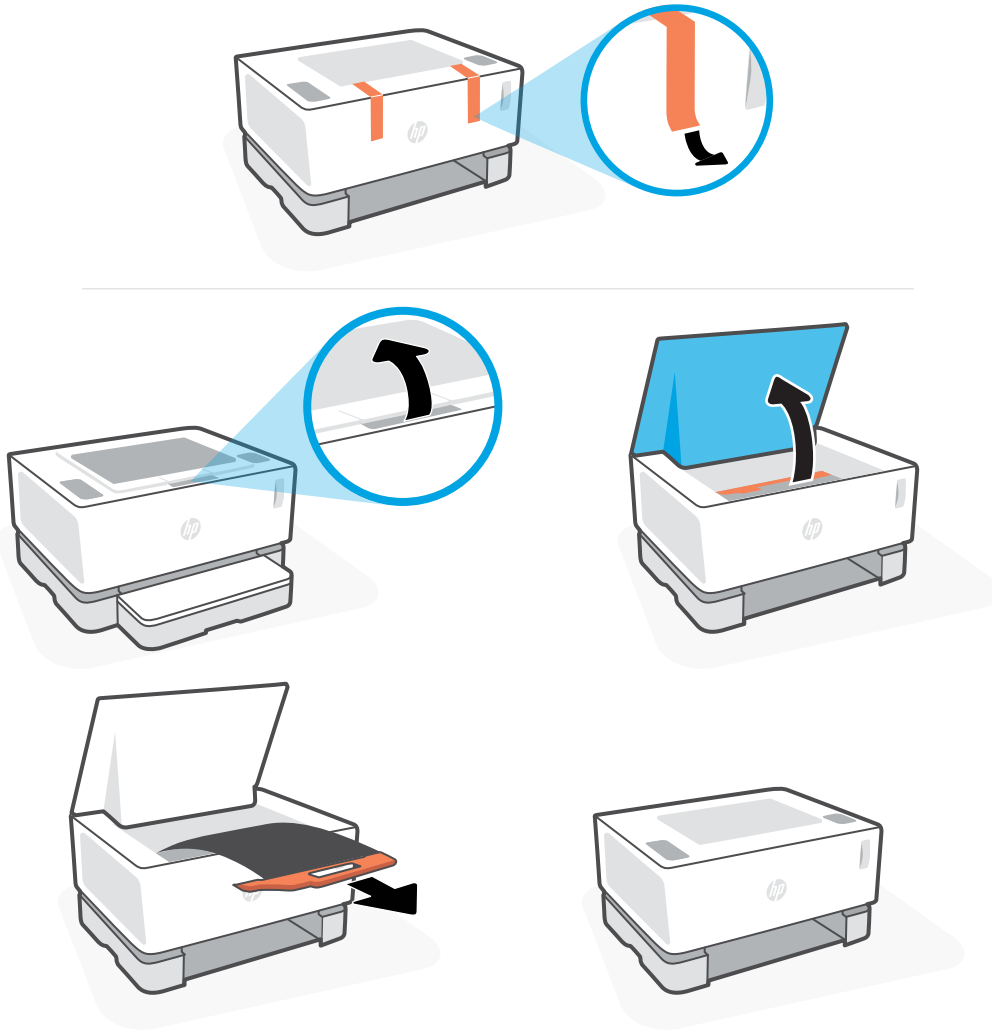




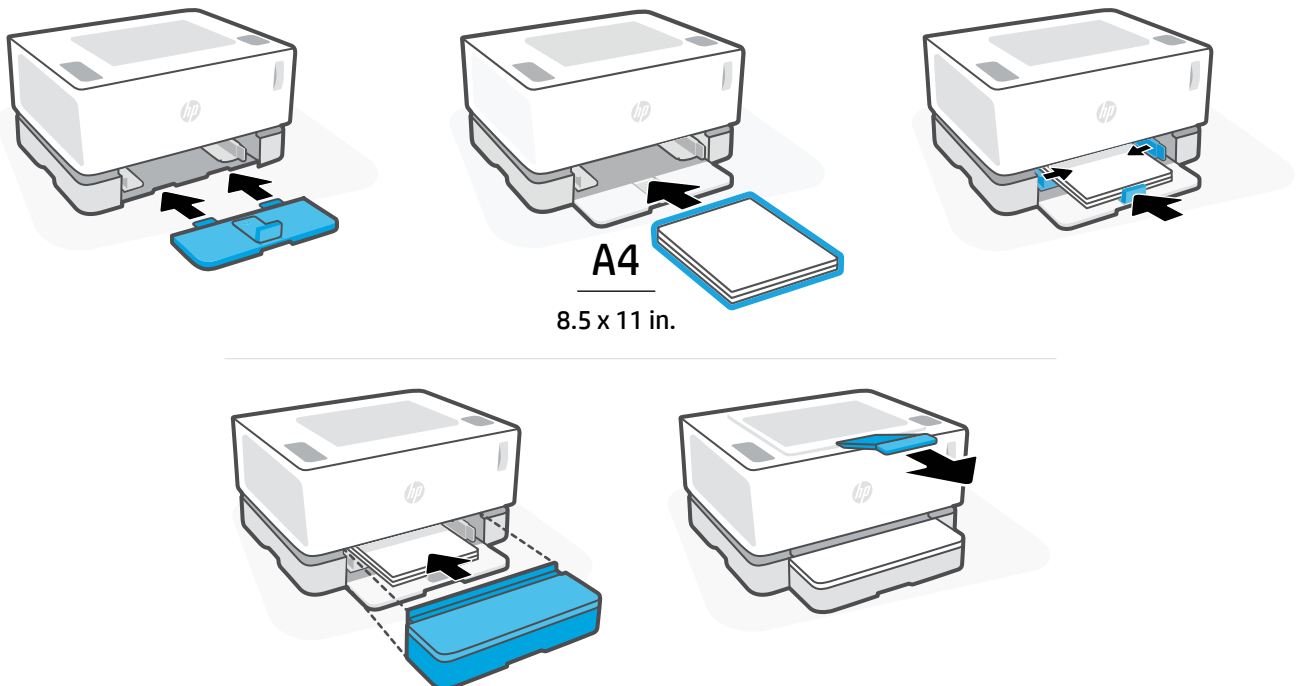
Neverstop Laser 1000 series

1



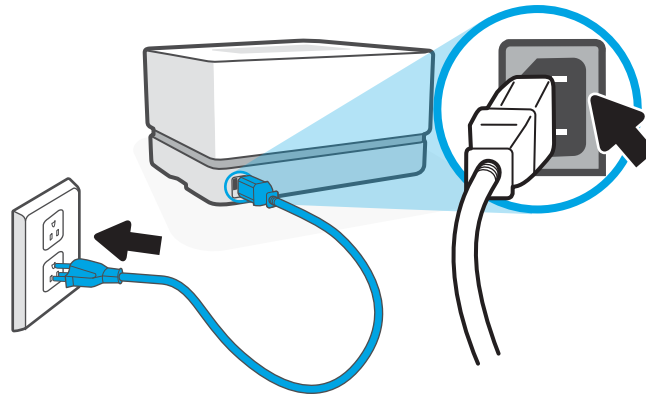
Remove the packing tape. Lift the top cover, and then remove and recycle the orange plastic handle with the attached black sheet.


2




Install the input tray, load paper, and then slide the cover into place over the tray. Pull out the output bin extension.

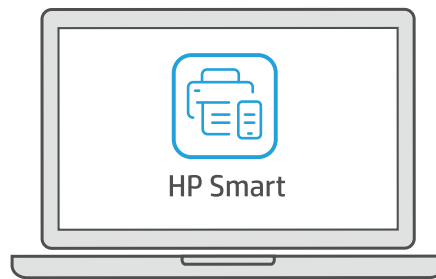
3



Plug in the printer. The printer turns on when it is plugged in and can take up to 1 minute to warm up. You will hear a series of noises, which is normal. When the Ready light  stops blinking, the printer is ready.

Note: Do not press the Power button  as this will turn off the printer and stop the warm-up process.

4



123.hp.com

Download HP Smart software to complete printer setup.

?

hp.com/support/printer-setup



Trouble getting started? Find setup information and videos online.

