

# Interactive Part Locator

## HP ProBook x360 435 G8 Notebook PC

Welcome to the interactive part locator  
for the HP ProBook x360 435 G8 Notebook PC

### Here's how to use it...

[External Views](#) (Click the link to navigate to the views)

On this page you will find large icons of each of the external views of this product. To view a specific view in greater detail, simply click that view.

[Parts List](#) (Click the link to navigate to the parts)

On this page, you will find a list of all of the replaceable parts for this product. To view a specific part and its location in the product, click the part name in the list.

**That's it! On every page there is a link that brings you back to either the External Views or the Parts List, enabling you to navigate to whatever view or part you wish to review.**

# External Views

[Back to Welcome page](#)



Front



Left



Right



Rear



Display



Top



Bottom



Internal

[Go to Parts List](#)

# Front View

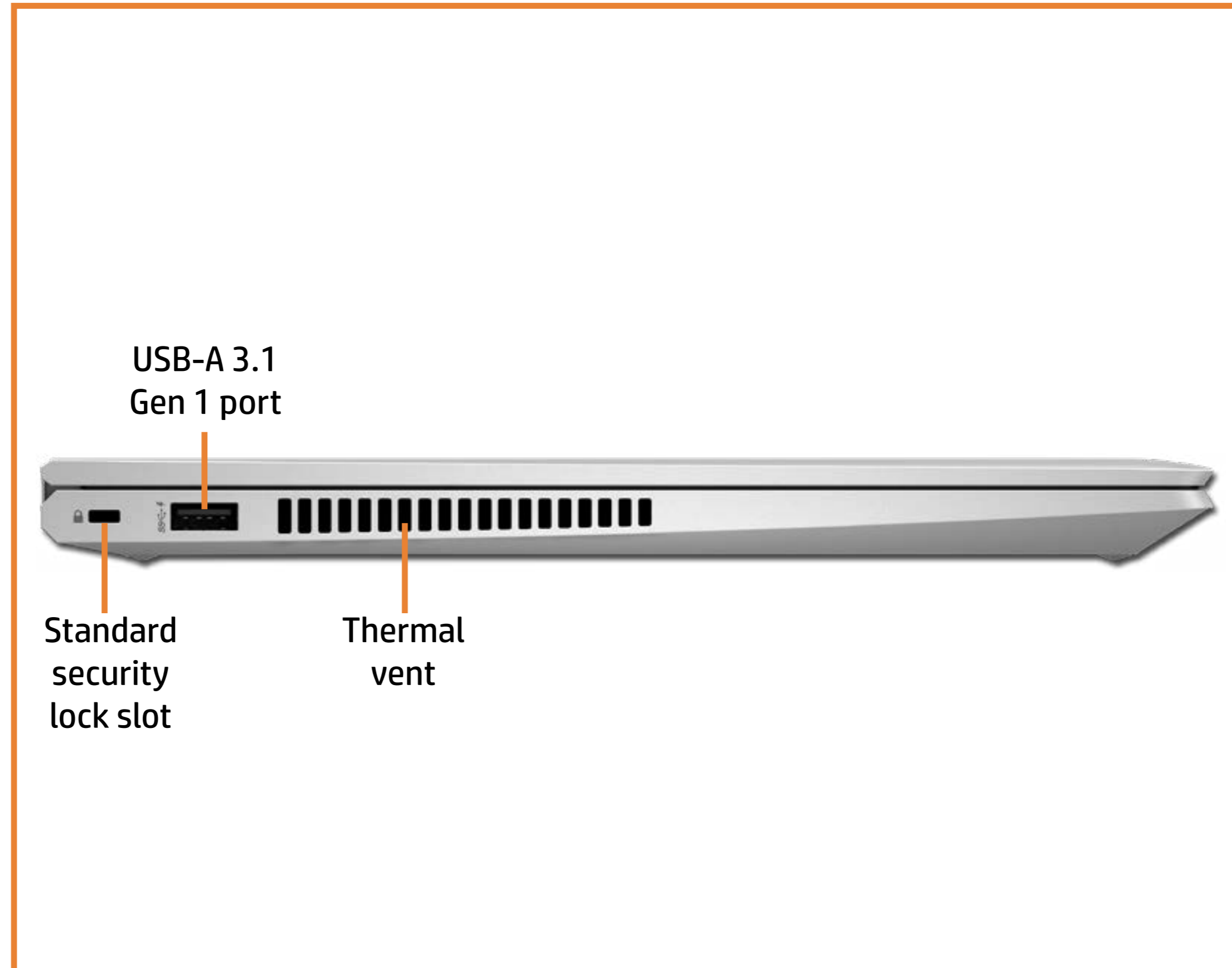
[Back to External Views](#)



[Go to Parts List](#)

# Left View

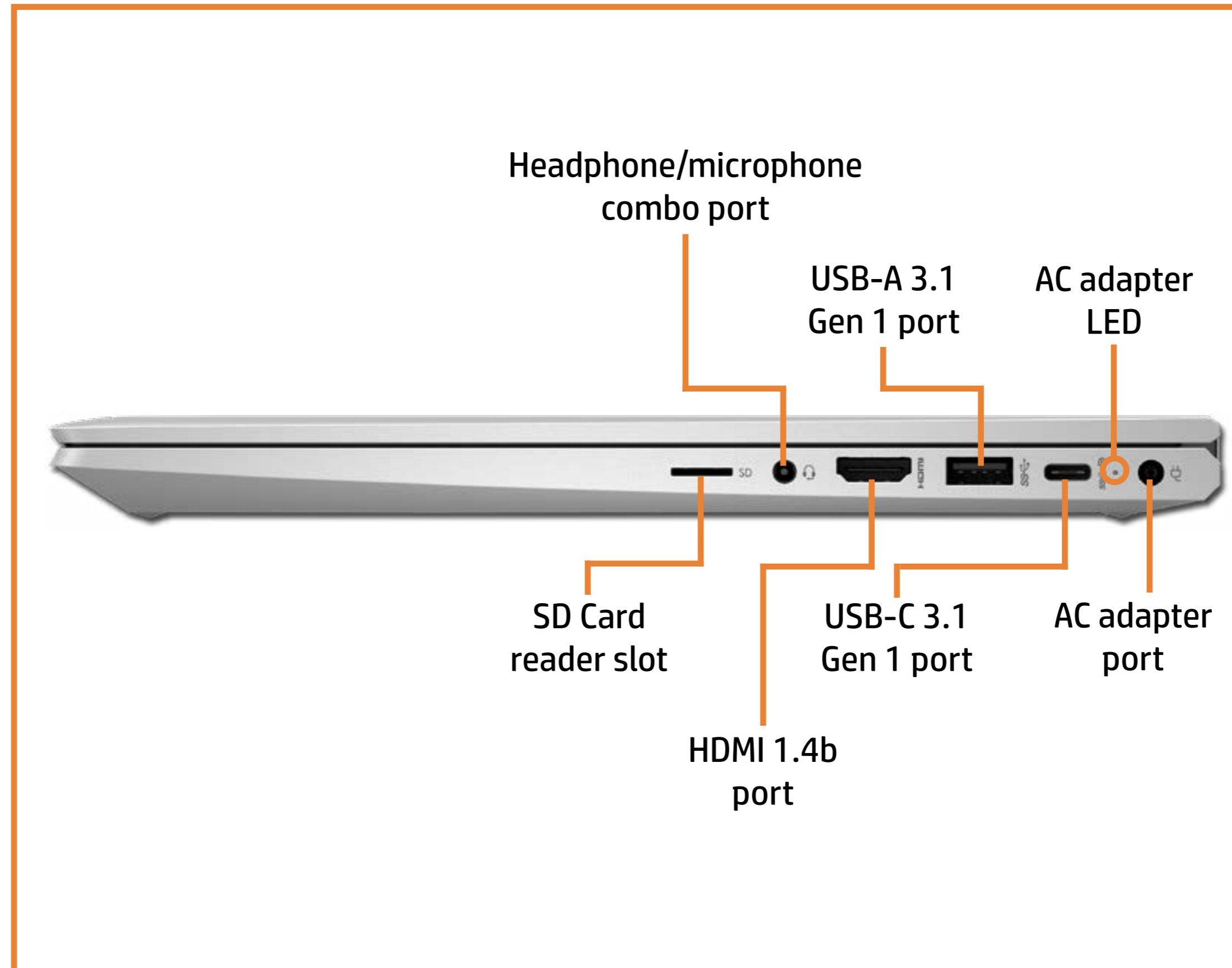
[Back to External Views](#)



[Go to Parts List](#)

# Right View

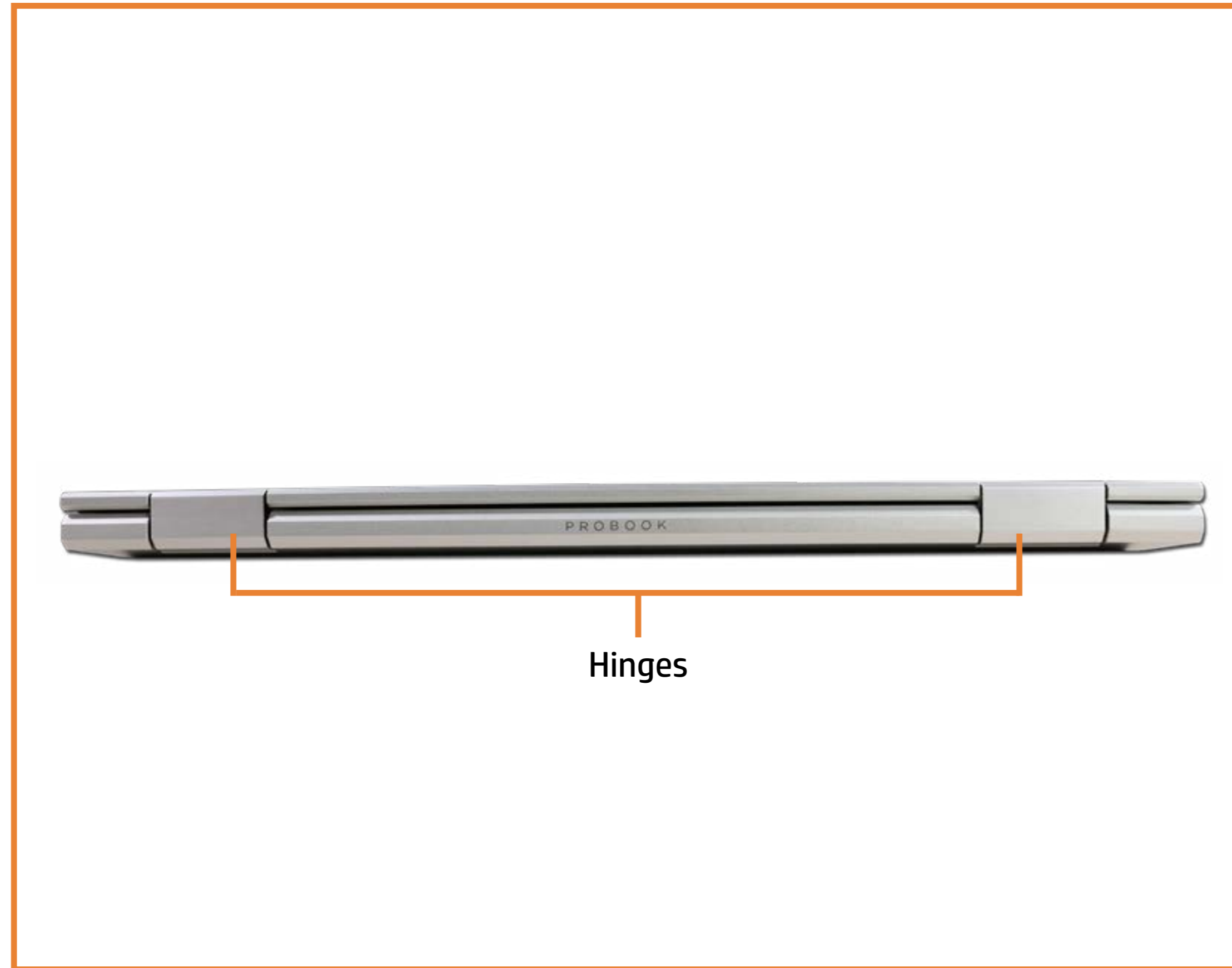
[Back to External Views](#)



[Go to Parts List](#)

# Rear View

[Back to External Views](#)

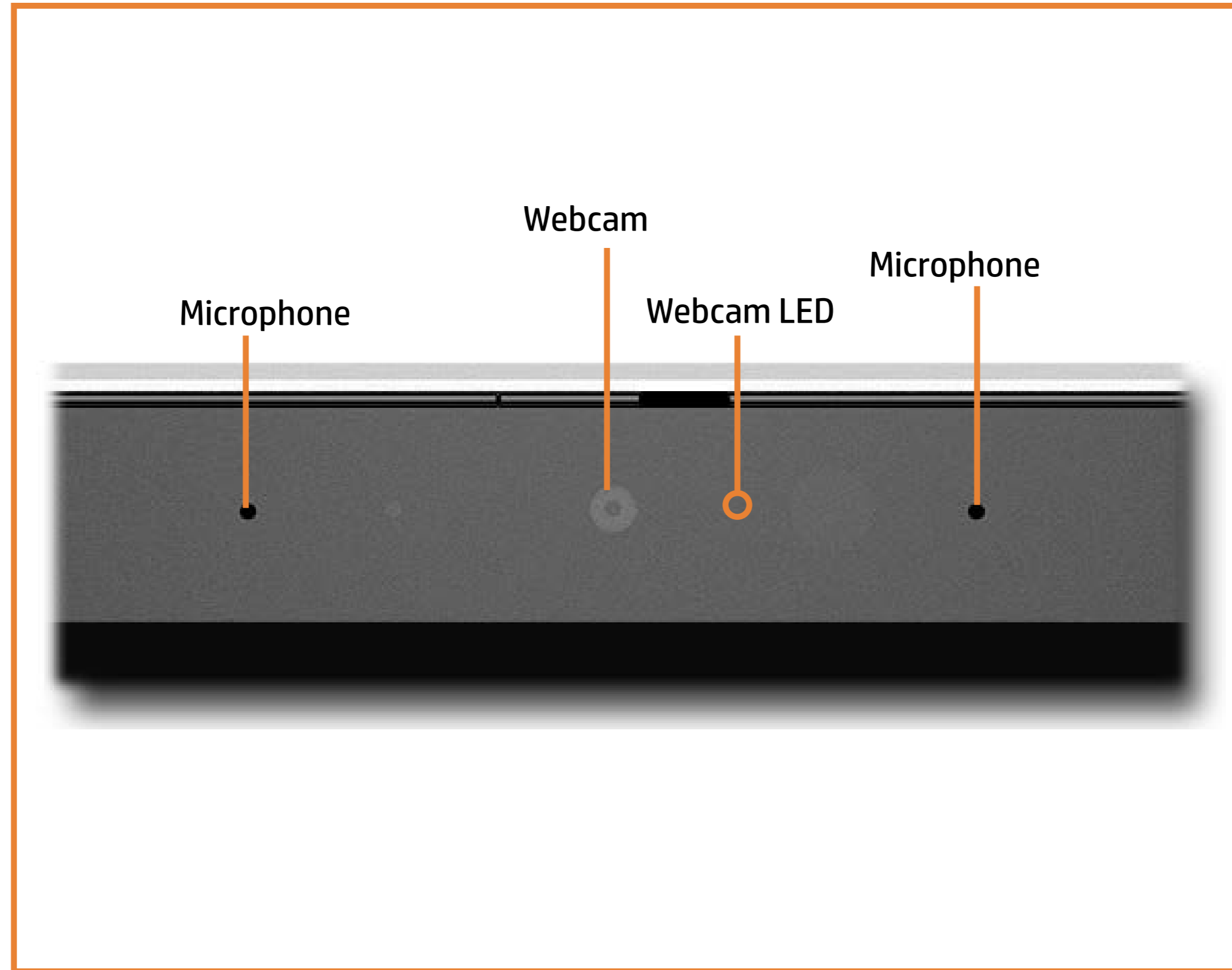


Hinges

[Go to Parts List](#)

# Display View

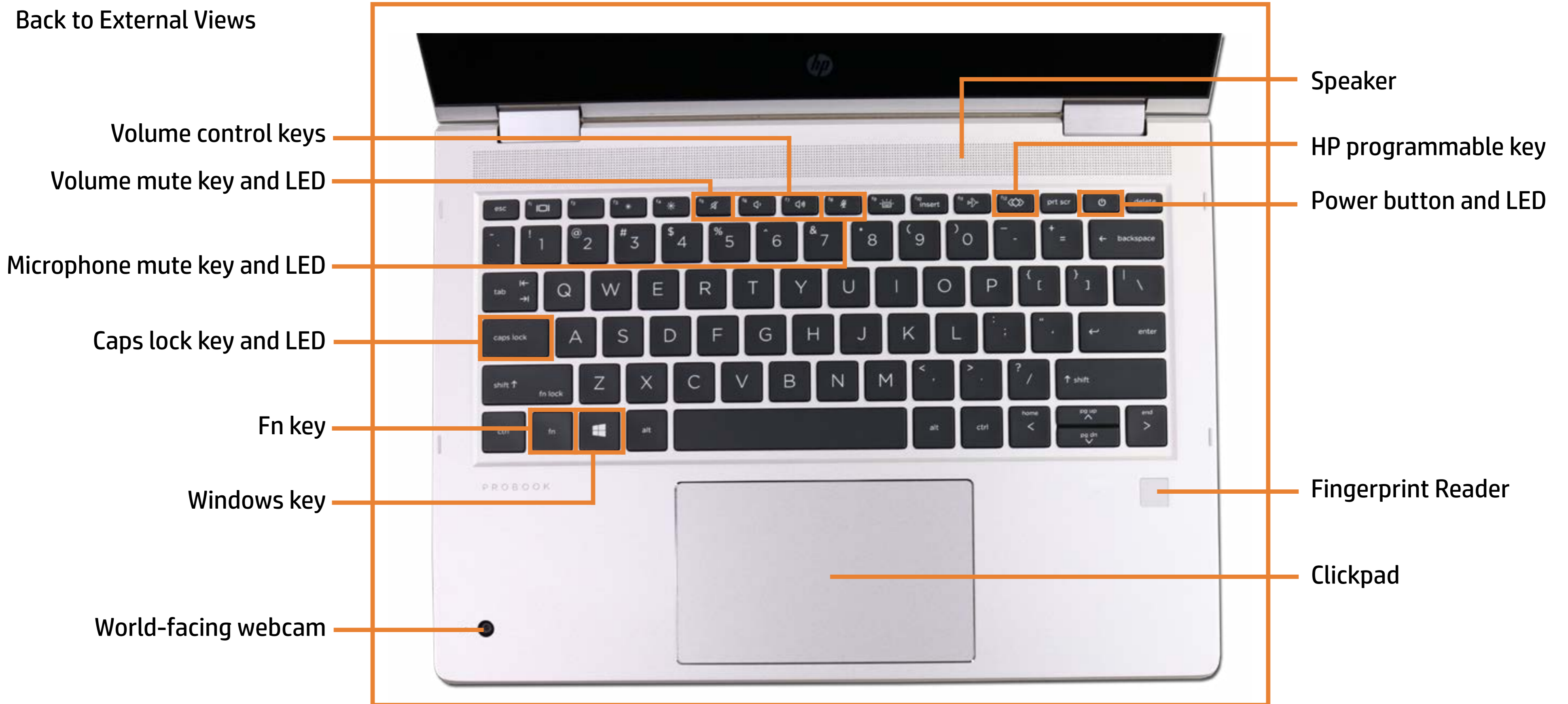
[Back to External Views](#)



[Go to Parts List](#)

# Top View

[Back to External Views](#)



Volume control keys

Volume mute key and LED

Microphone mute key and LED

Caps lock key and LED

Fn key

Windows key

World-facing webcam

Speaker

HP programmable key

Power button and LED

Fingerprint Reader

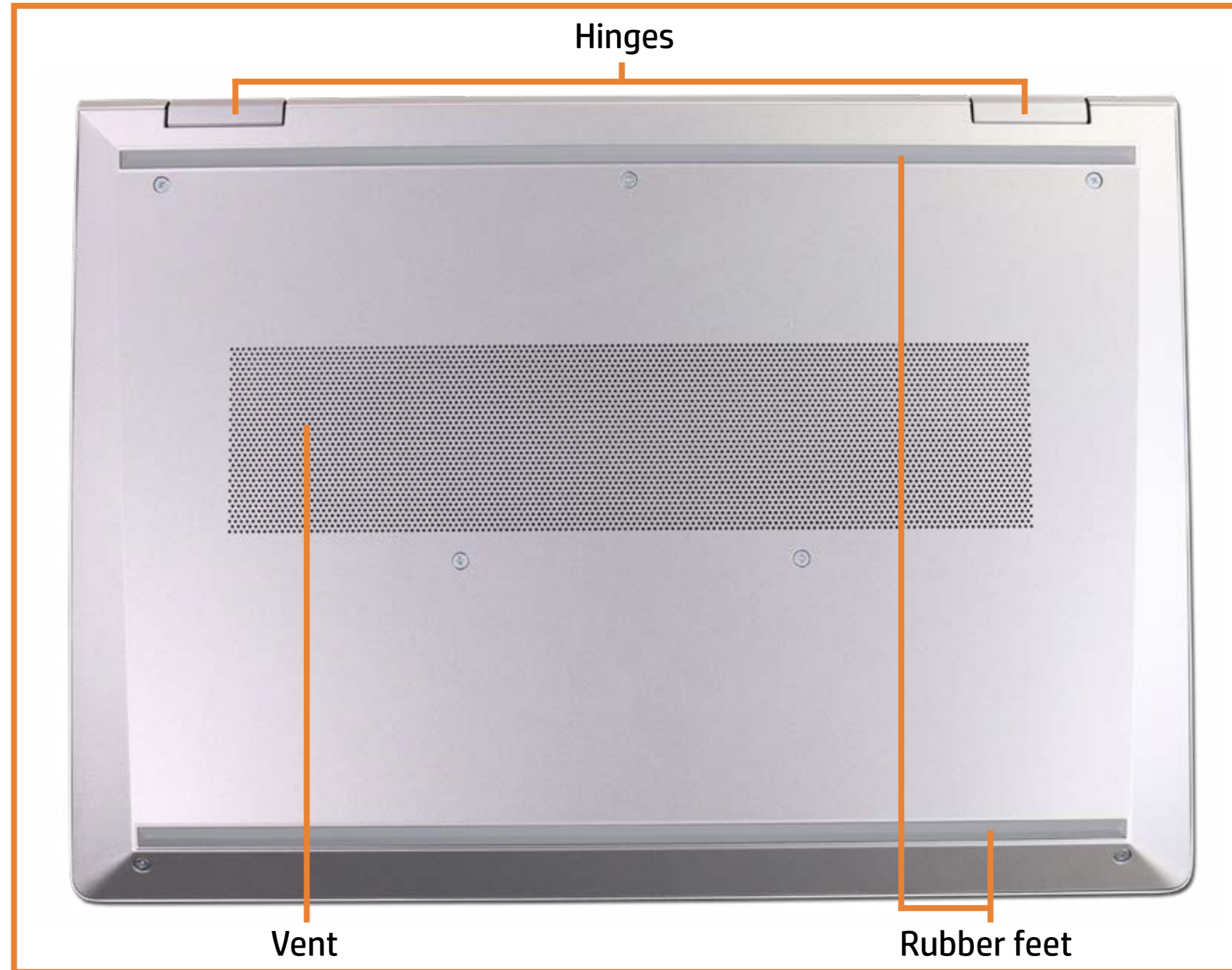
Clickpad

[Go to Parts List](#)



# Bottom View

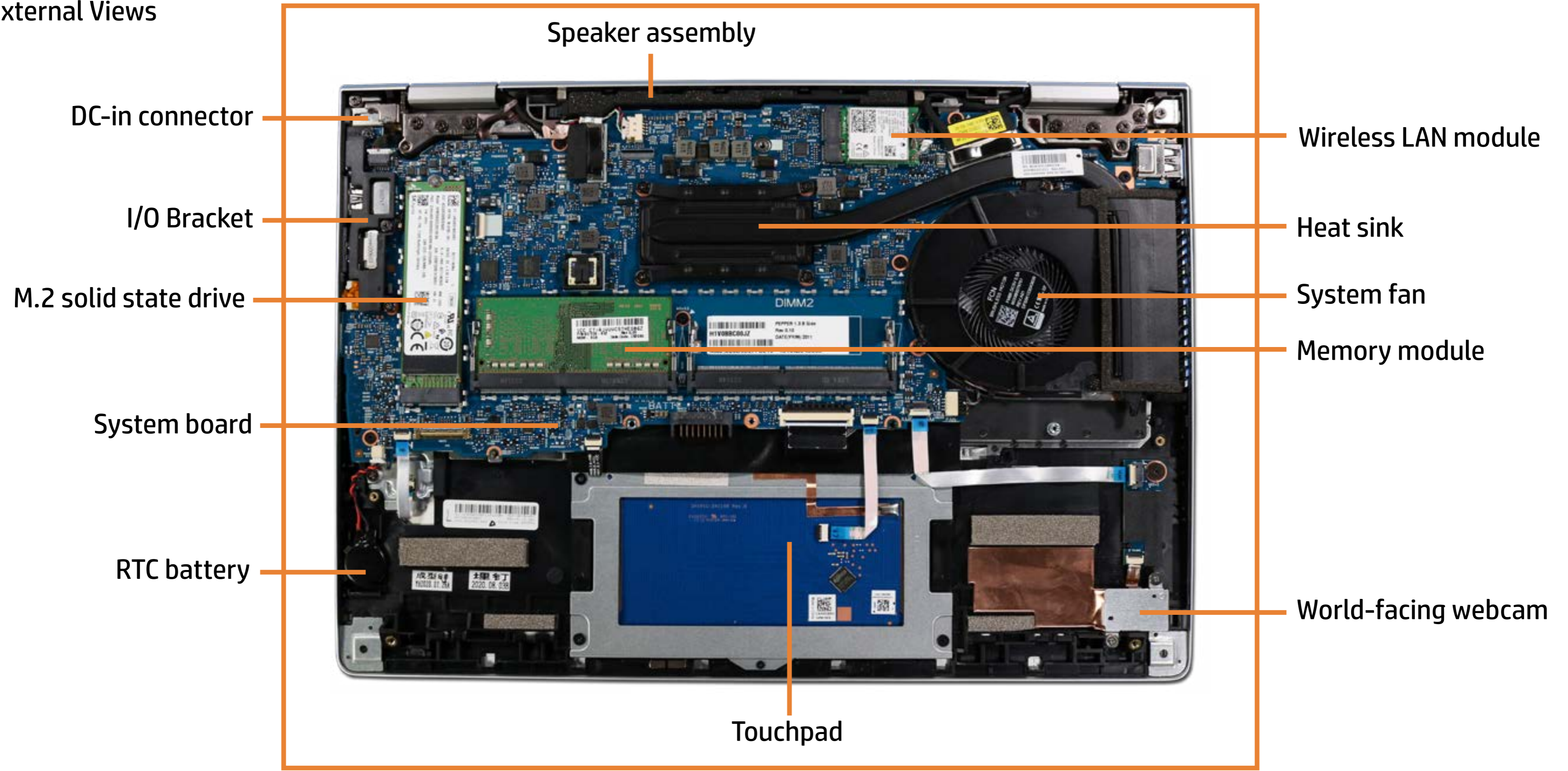
[Back to External Views](#)



[Go to Parts List](#)

# Internal View

[Back to External Views](#)

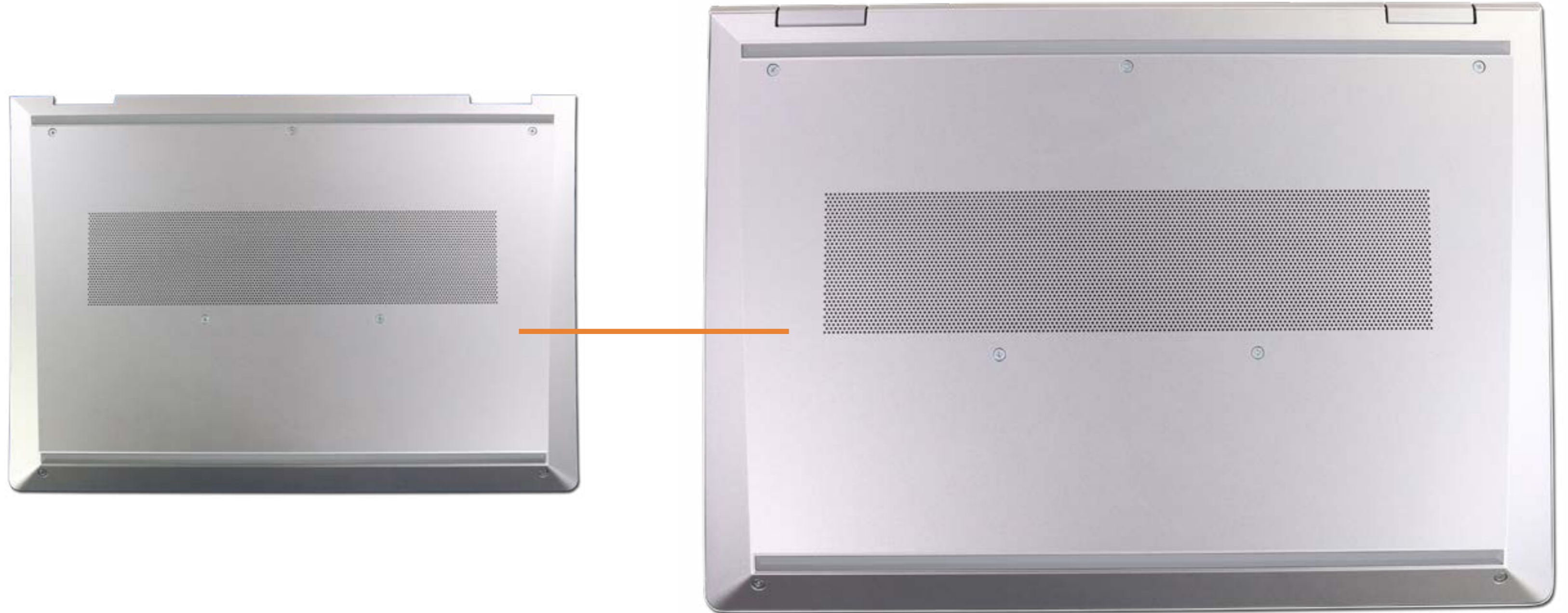


[Go to Parts List](#)

# Base Enclosure

## Base Enclosure

- Battery
- M.2 Solid State Drive
- Memory Module
- Wireless LAN Module
- I/O Bracket
- Touchpad
- World-Facing Webcam
- Transfer Board
- RTC Battery
- System Fan
- Heat Sink
- System Board (top)
- System Board (bottom)
- Speaker Assembly
- DC-In Connector
- Fingerprint Reader
- Display Panel Assembly
- Top Cover with Keyboard



[Go to External Views](#)

# Battery

Base Enclosure

**Battery**

M.2 Solid State Drive

Memory Module

Wireless LAN Module

I/O Bracket

Touchpad

World-Facing Webcam

Transfer Board

RTC Battery

System Fan

Heat Sink

System Board (top)

System Board (bottom)

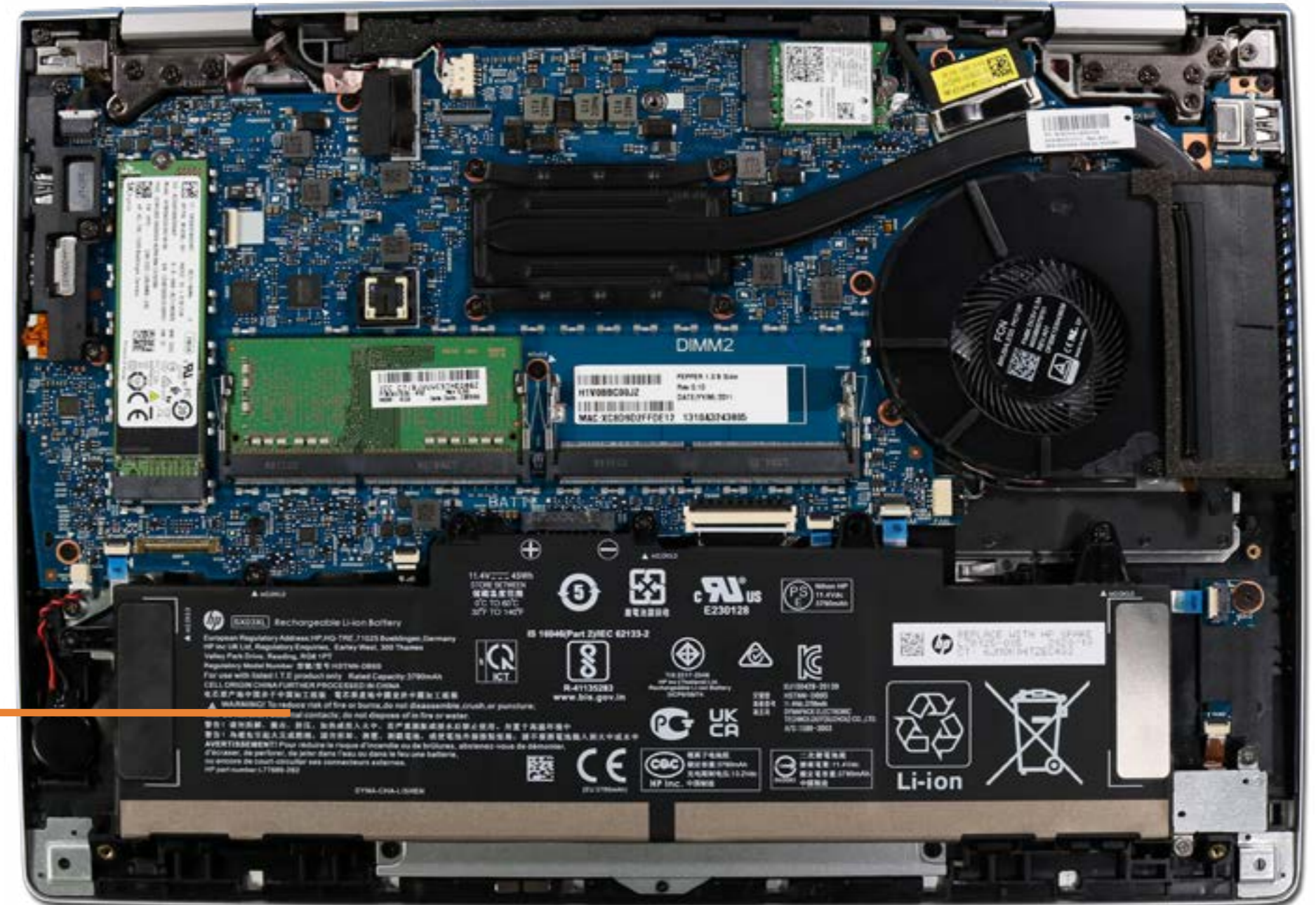
Speaker Assembly

DC-In Connector

Fingerprint Reader

Display Panel Assembly

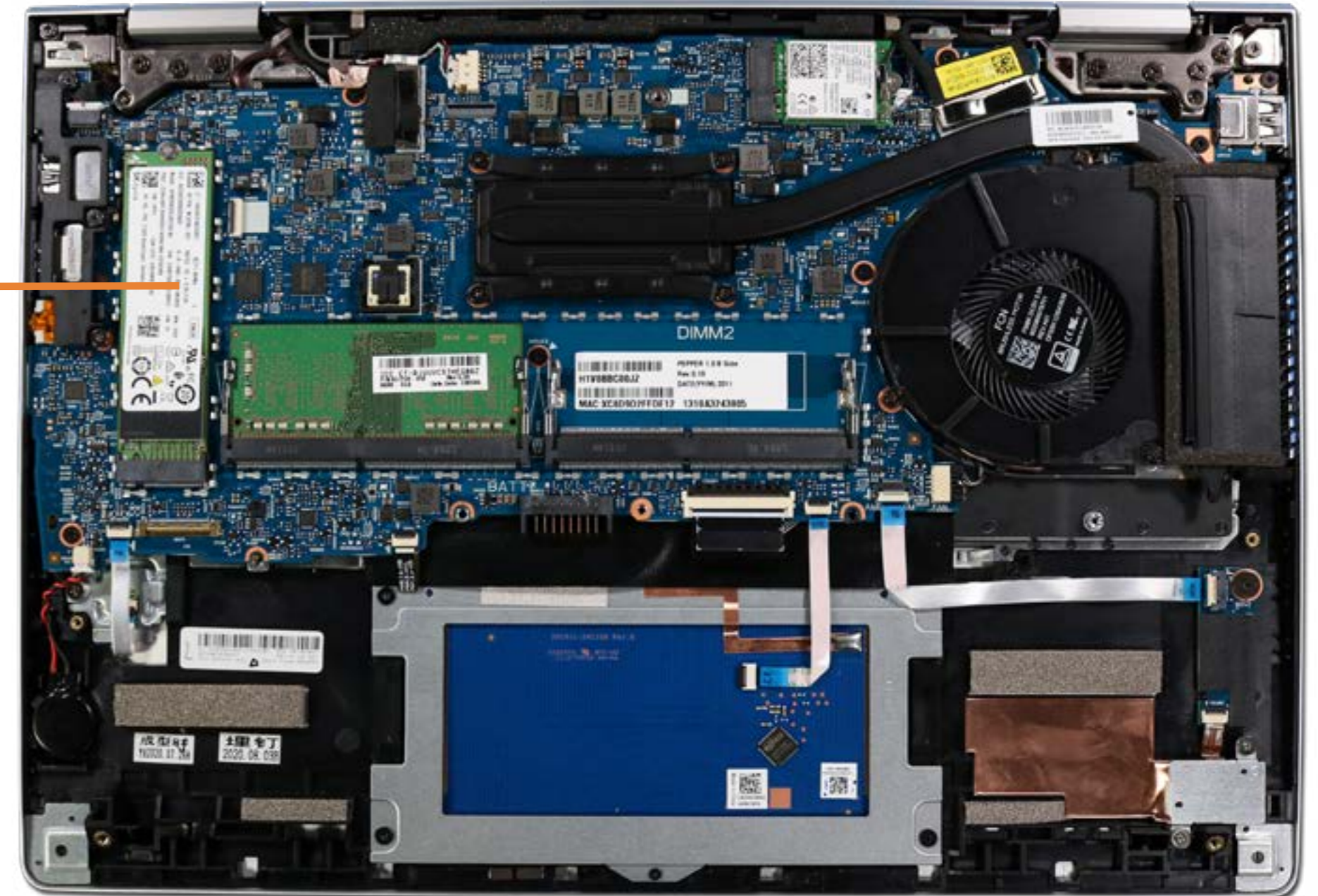
Top Cover with Keyboard



[Go to External Views](#)

# M.2 Solid State Drive

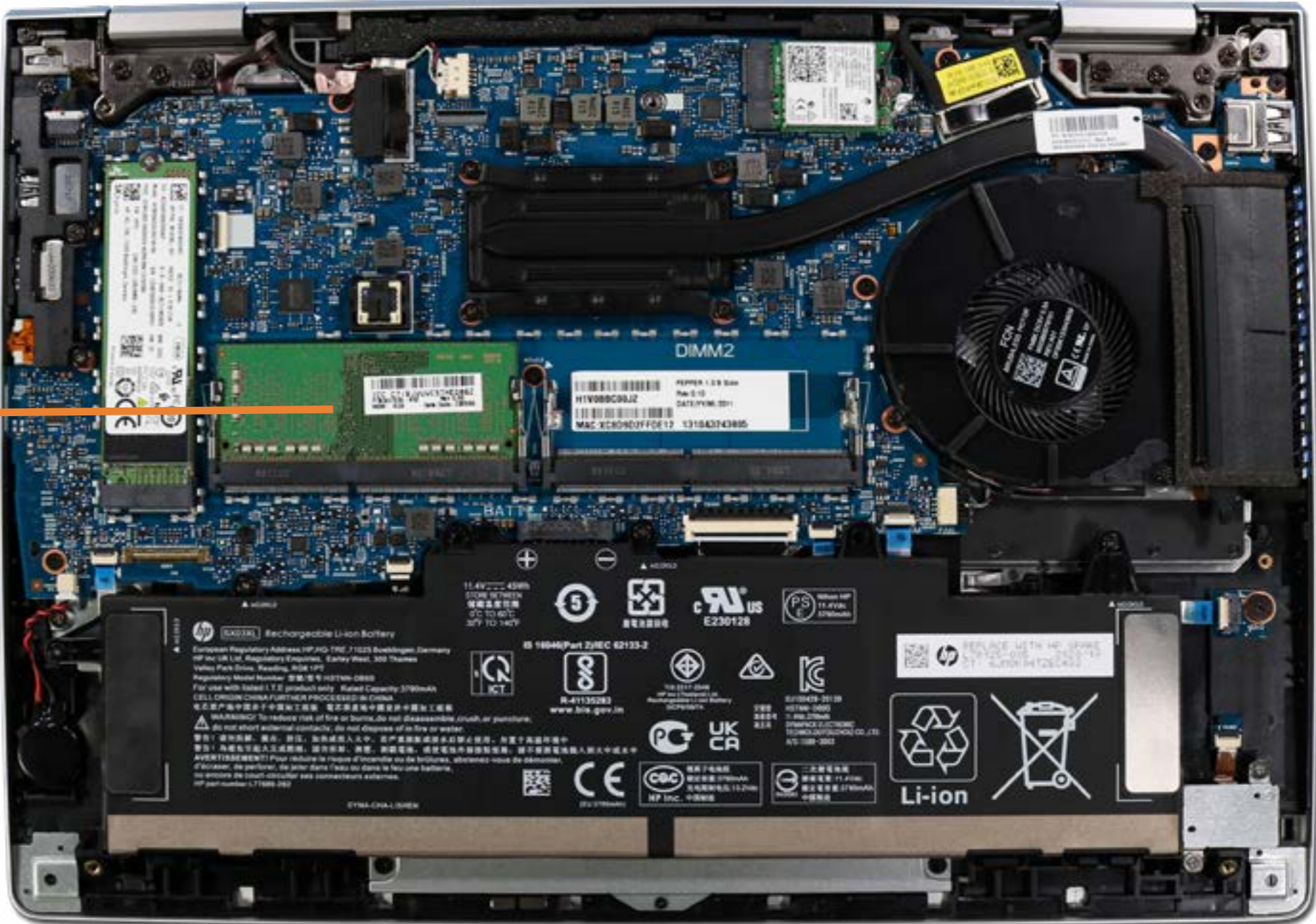
- Base Enclosure
- Battery
- M.2 Solid State Drive**
- Memory Module
- Wireless LAN Module
- I/O Bracket
- Touchpad
- World-Facing Webcam
- Transfer Board
- RTC Battery
- System Fan
- Heat Sink
- System Board (top)
- System Board (bottom)
- Speaker Assembly
- DC-In Connector
- Fingerprint Reader
- Display Panel Assembly
- Top Cover with Keyboard



[Go to External Views](#)

# Memory Module

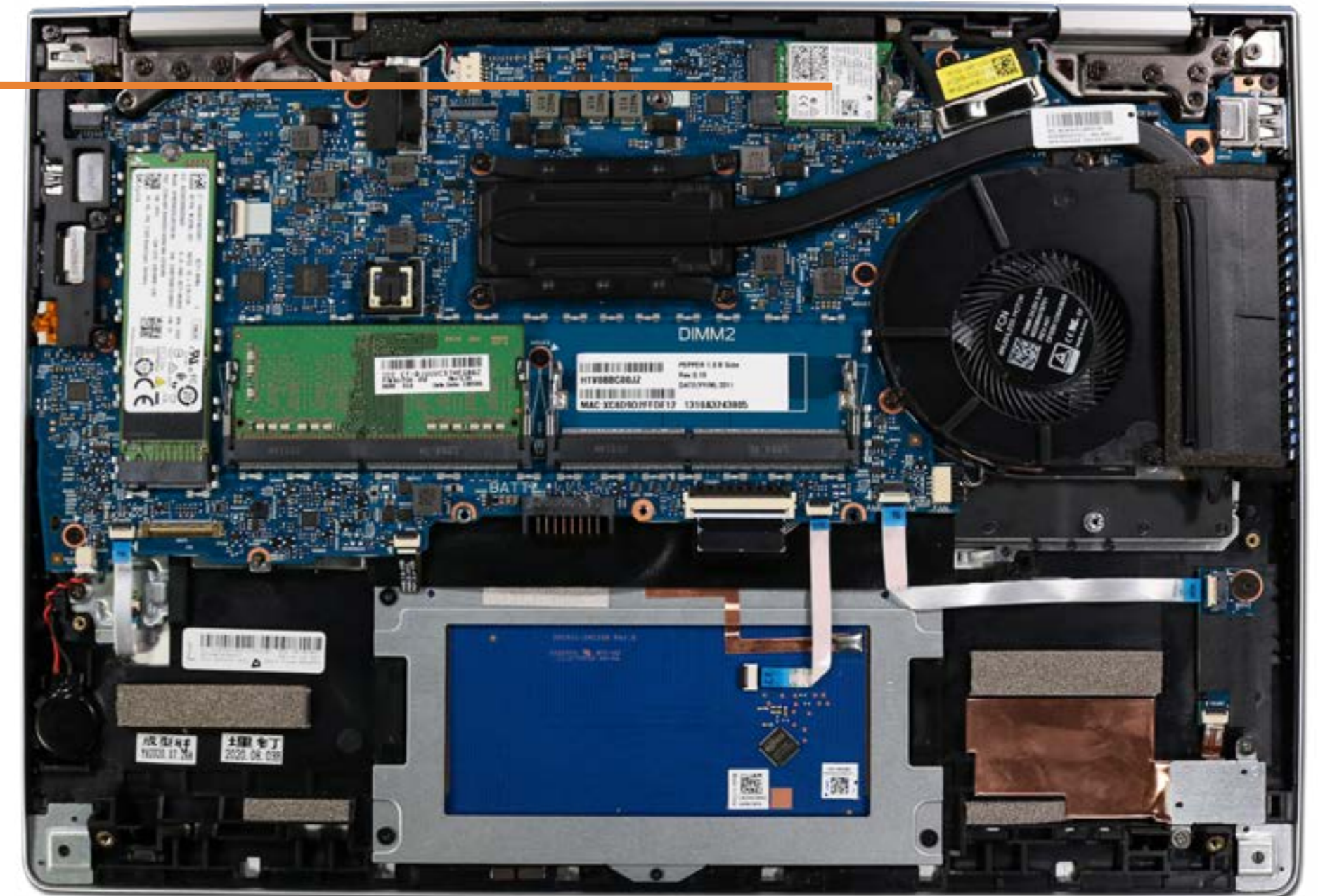
- Base Enclosure
- Battery
- M.2 Solid State Drive
- Memory Module**
- Wireless LAN Module
- I/O Bracket
- Touchpad
- World-Facing Webcam
- Transfer Board
- RTC Battery
- System Fan
- Heat Sink
- System Board (top)
- System Board (bottom)
- Speaker Assembly
- DC-In Connector
- Fingerprint Reader
- Display Panel Assembly
- Top Cover with Keyboard



[Go to External Views](#)

# Wireless LAN Module

- Base Enclosure
- Battery
- M.2 Solid State Drive
- Memory Module
- Wireless LAN Module**
- I/O Bracket
- Touchpad
- World-Facing Webcam
- Transfer Board
- RTC Battery
- System Fan
- Heat Sink
- System Board (top)
- System Board (bottom)
- Speaker Assembly
- DC-In Connector
- Fingerprint Reader
- Display Panel Assembly
- Top Cover with Keyboard



[Go to External Views](#)

# I/O Bracket

- Base Enclosure
- Battery
- M.2 Solid State Drive
- Memory Module
- Wireless LAN Module
- I/O Bracket**
- Touchpad
- World-Facing Webcam
- Transfer Board
- RTC Battery
- System Fan
- Heat Sink
- System Board (top)
- System Board (bottom)
- Speaker Assembly
- DC-In Connector
- Fingerprint Reader
- Display Panel Assembly
- Top Cover with Keyboard

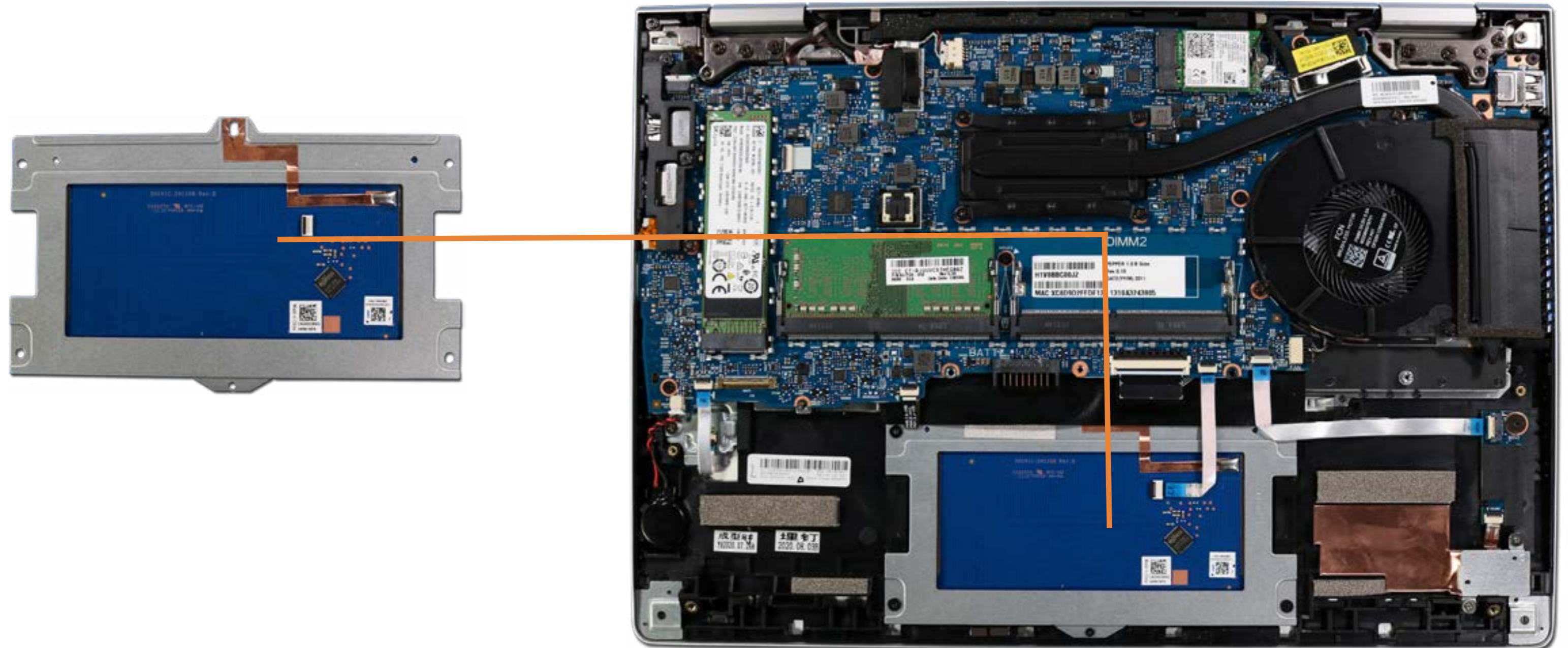


[Go to External Views](#)



# Touchpad

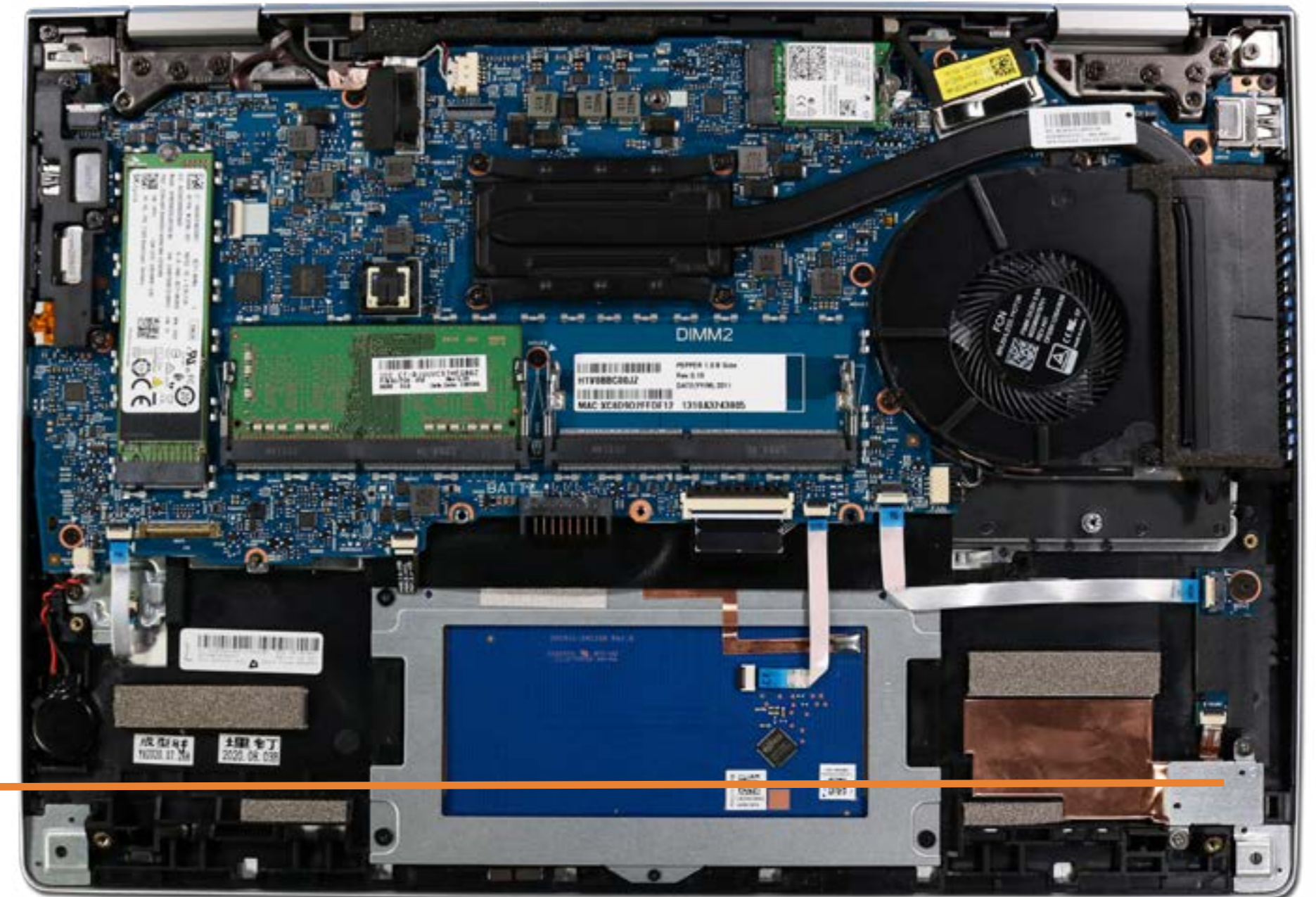
- Base Enclosure
- Battery
- M.2 Solid State Drive
- Memory Module
- Wireless LAN Module
- I/O Bracket
- Touchpad**
- World-Facing Webcam
- Transfer Board
- RTC Battery
- System Fan
- Heat Sink
- System Board (top)
- System Board (bottom)
- Speaker Assembly
- DC-In Connector
- Fingerprint Reader
- Display Panel Assembly
- Top Cover with Keyboard



[Go to External Views](#)

# World-Facing Webcam

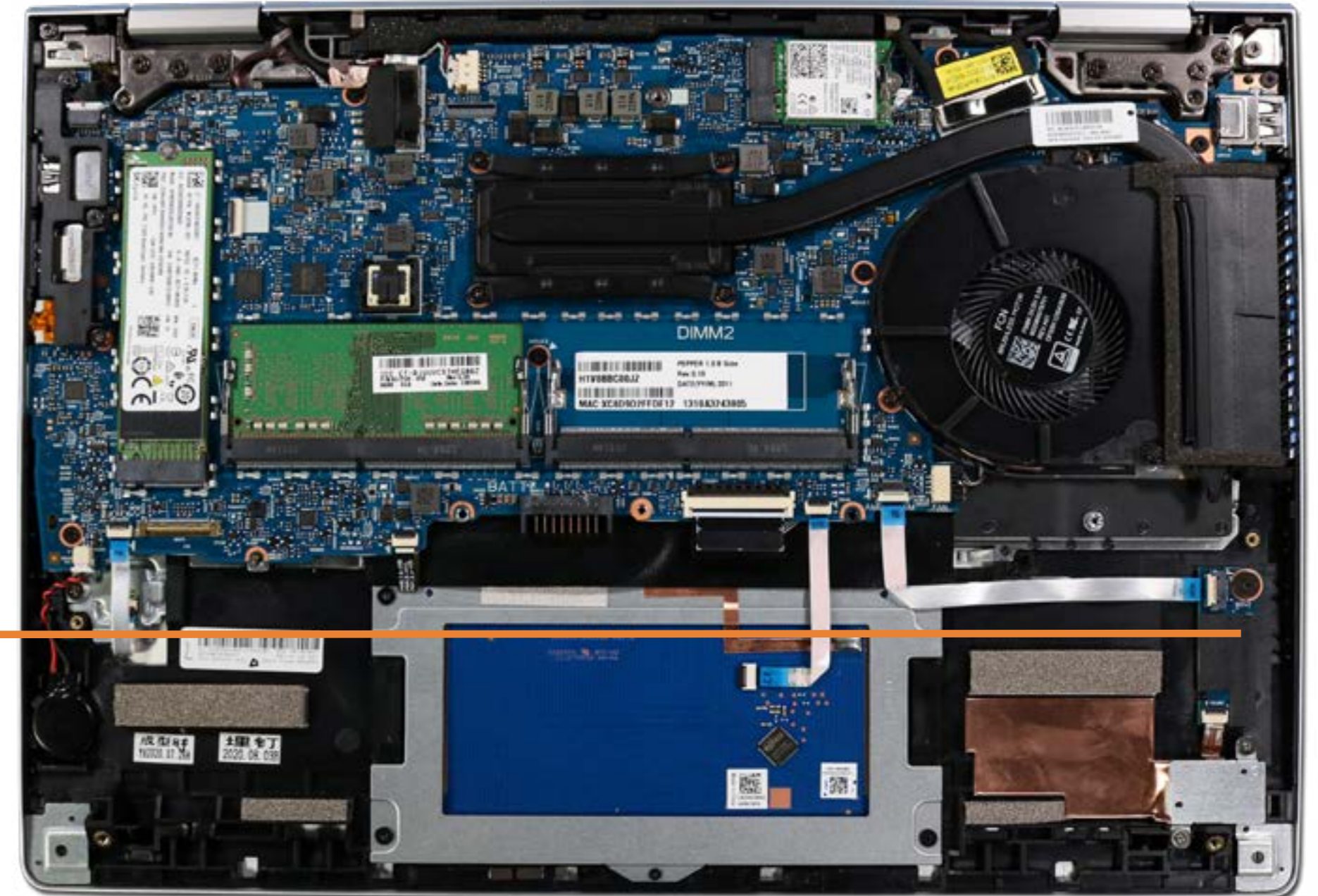
- Base Enclosure
- Battery
- M.2 Solid State Drive
- Memory Module
- Wireless LAN Module
- I/O Bracket
- Touchpad
- World-Facing Webcam**
- Transfer Board
- RTC Battery
- System Fan
- Heat Sink
- System Board (top)
- System Board (bottom)
- Speaker Assembly
- DC-In Connector
- Fingerprint Reader
- Display Panel Assembly
- Top Cover with Keyboard



Go to External Views

# Transfer Board

- Base Enclosure
- Battery
- M.2 Solid State Drive
- Memory Module
- Wireless LAN Module
- I/O Bracket
- Touchpad
- World-Facing Webcam
- Transfer Board**
- RTC Battery
- System Fan
- Heat Sink
- System Board (top)
- System Board (bottom)
- Speaker Assembly
- DC-In Connector
- Fingerprint Reader
- Display Panel Assembly
- Top Cover with Keyboard



Go to External Views

# RTC Battery

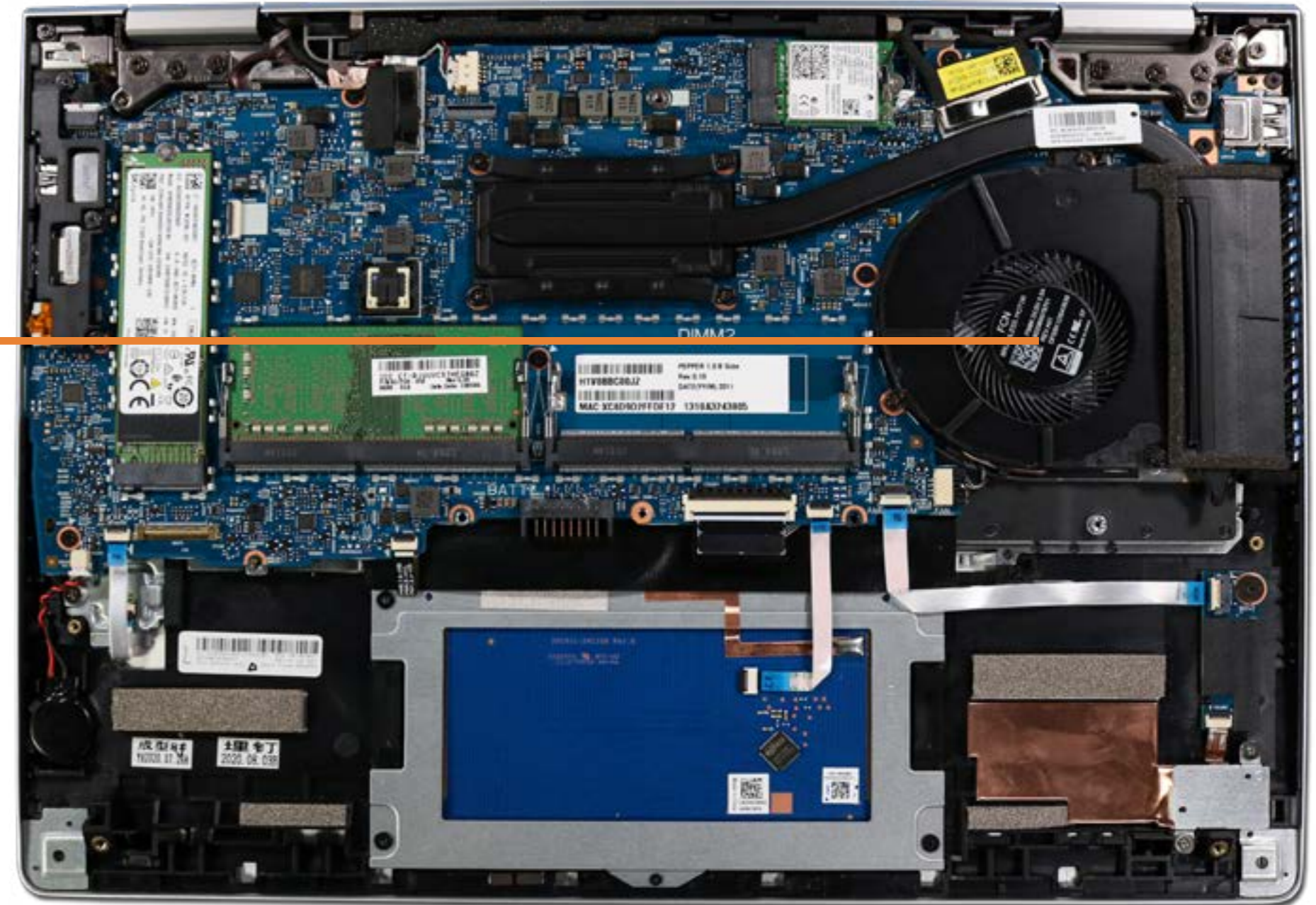
- Base Enclosure
- Battery
- M.2 Solid State Drive
- Memory Module
- Wireless LAN Module
- I/O Bracket
- Touchpad
- World-Facing Webcam
- Transfer Board
- RTC Battery**
- System Fan
- Heat Sink
- System Board (top)
- System Board (bottom)
- Speaker Assembly
- DC-In Connector
- Fingerprint Reader
- Display Panel Assembly
- Top Cover with Keyboard



[Go to External Views](#)

# System fan

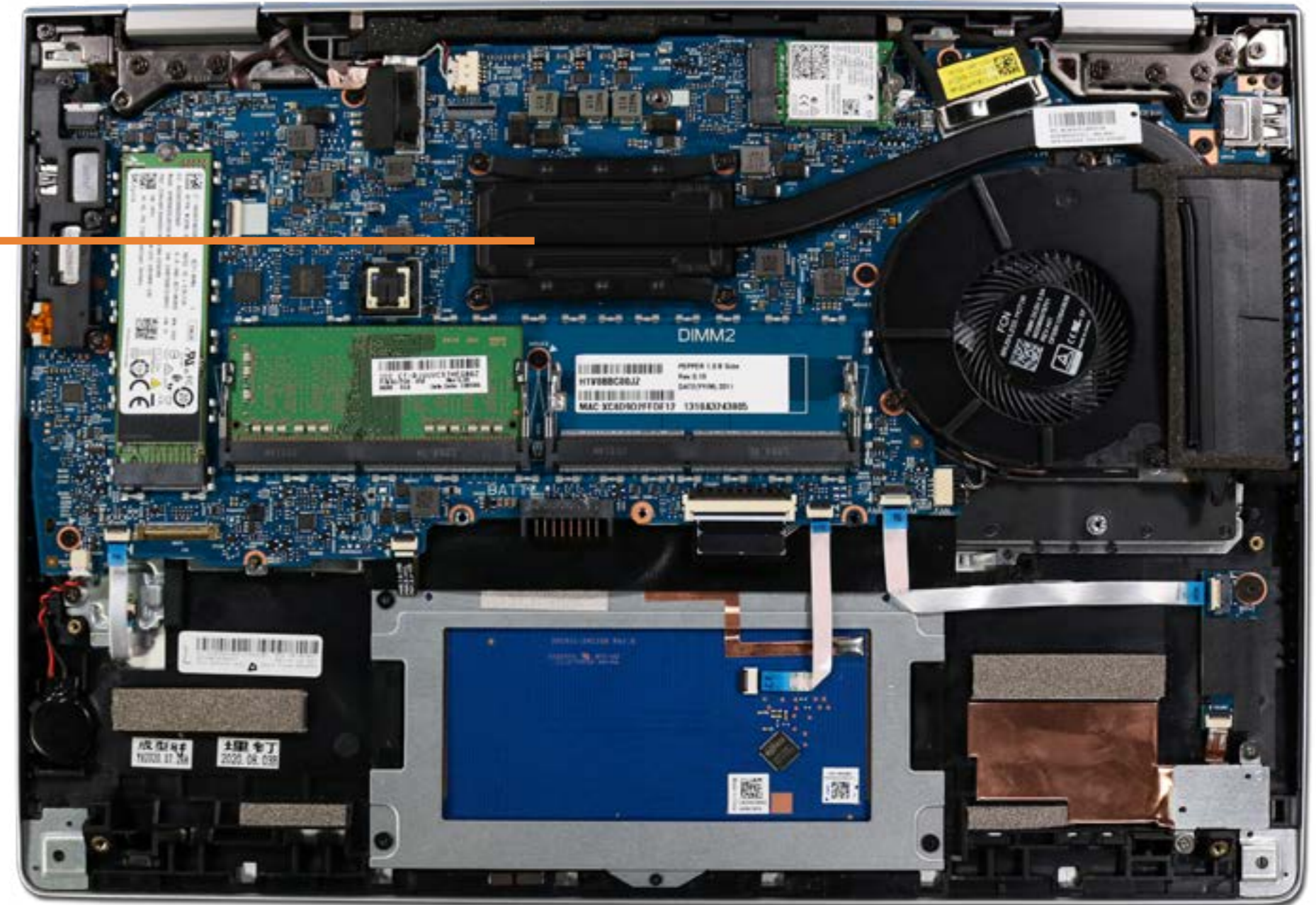
- Base Enclosure
- Battery
- M.2 Solid State Drive
- Memory Module
- Wireless LAN Module
- I/O Bracket
- Touchpad
- World-Facing Webcam
- Transfer Board
- RTC Battery
- System Fan**
- Heat Sink
- System Board (top)
- System Board (bottom)
- Speaker Assembly
- DC-In Connector
- Fingerprint Reader
- Display Panel Assembly
- Top Cover with Keyboard



[Go to External Views](#)

# Heat Sink

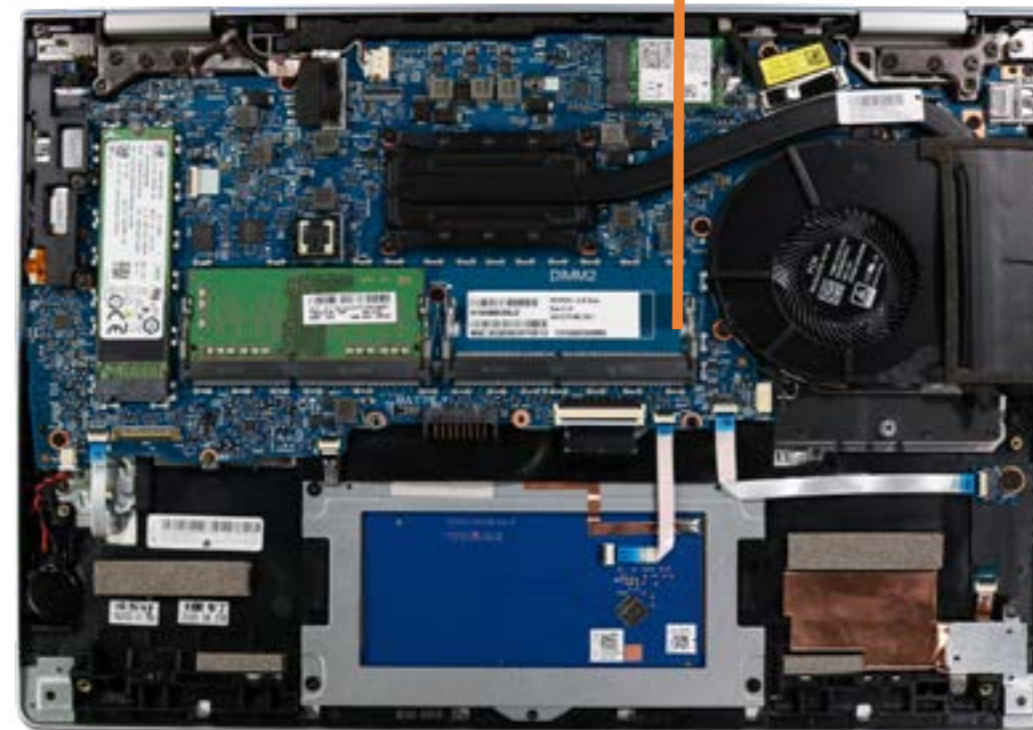
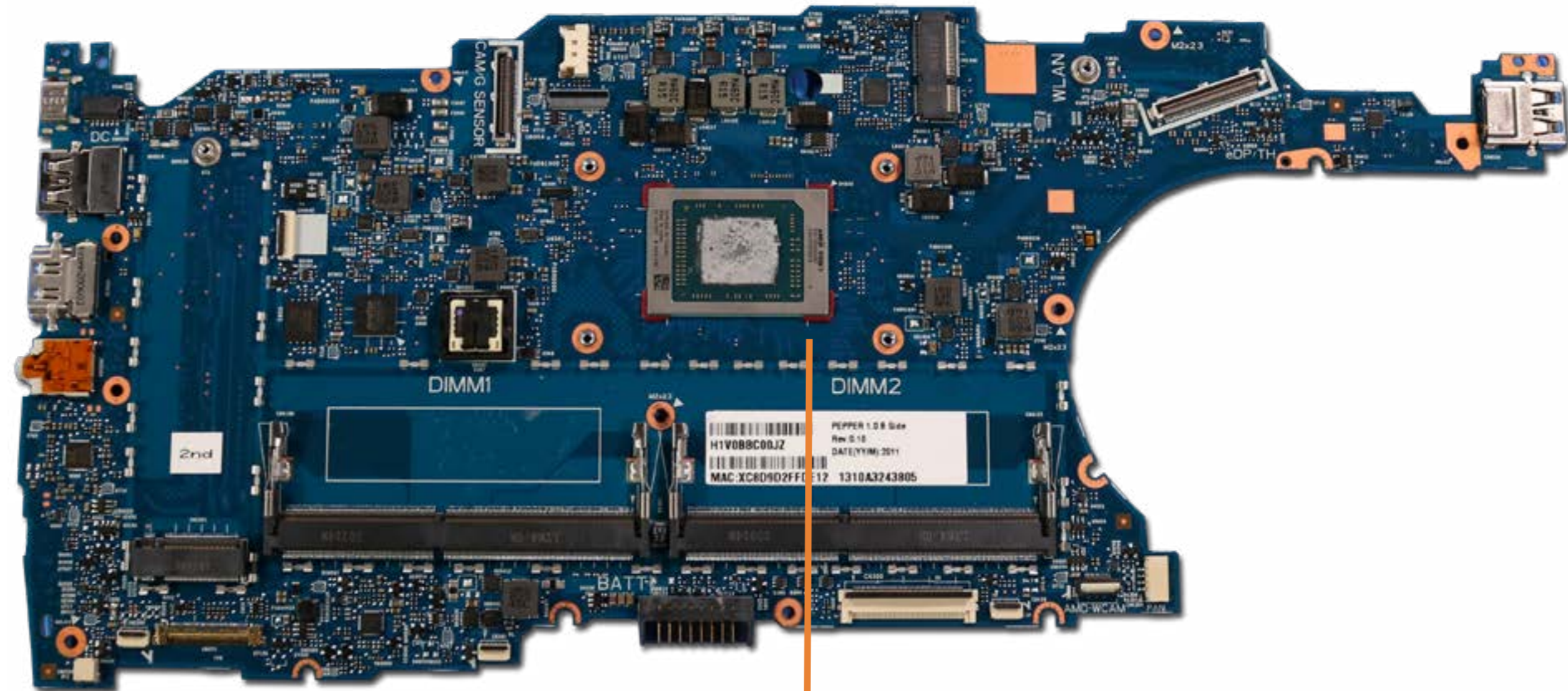
- Base Enclosure
- Battery
- M.2 Solid State Drive
- Memory Module
- Wireless LAN Module
- I/O Bracket
- Touchpad
- World-Facing Webcam
- Transfer Board
- RTC Battery
- System Fan
- Heat Sink**
- System Board (top)
- System Board (bottom)
- Speaker Assembly
- DC-In Connector
- Fingerprint Reader
- Display Panel Assembly
- Top Cover with Keyboard



[Go to External Views](#)

# System Board (top)

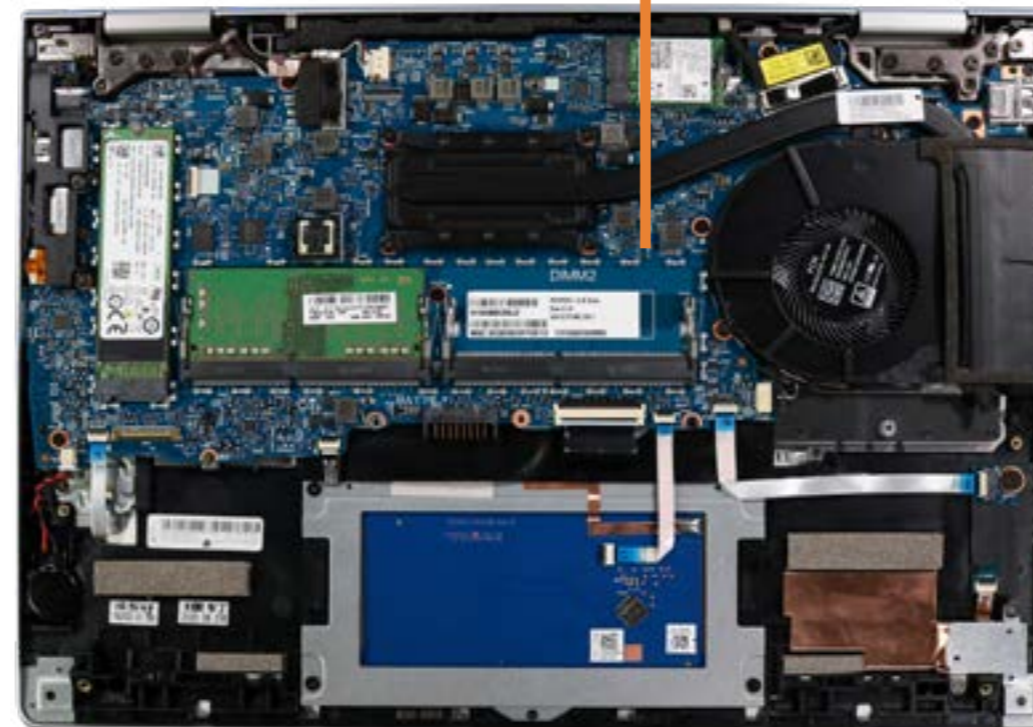
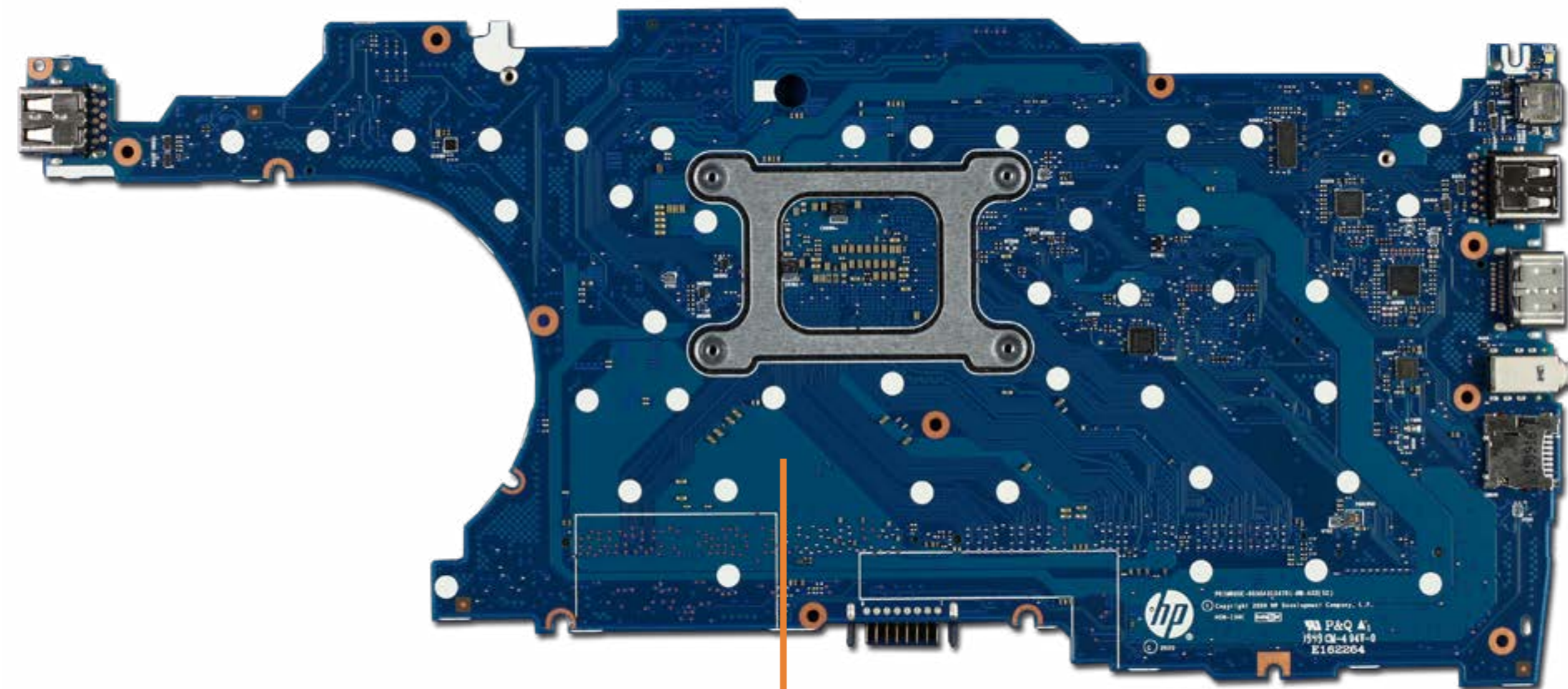
- Base Enclosure
- Battery
- M.2 Solid State Drive
- Memory Module
- Wireless LAN Module
- I/O Bracket
- Touchpad
- World-Facing Webcam
- Transfer Board
- RTC Battery
- System Fan
- Heat Sink
- System Board (top)**
- System Board (bottom)
- Speaker Assembly
- DC-In Connector
- Fingerprint Reader
- Display Panel Assembly
- Top Cover with Keyboard



Go to External Views

# System Board (bottom)

- Base Enclosure
- Battery
- M.2 Solid State Drive
- Memory Module
- Wireless LAN Module
- I/O Bracket
- Touchpad
- World-Facing Webcam
- Transfer Board
- RTC Battery
- System Fan
- Heat Sink
- System Board (top)
- System Board (bottom)**
- Speaker Assembly
- DC-In Connector
- Fingerprint Reader
- Display Panel Assembly
- Top Cover with Keyboard

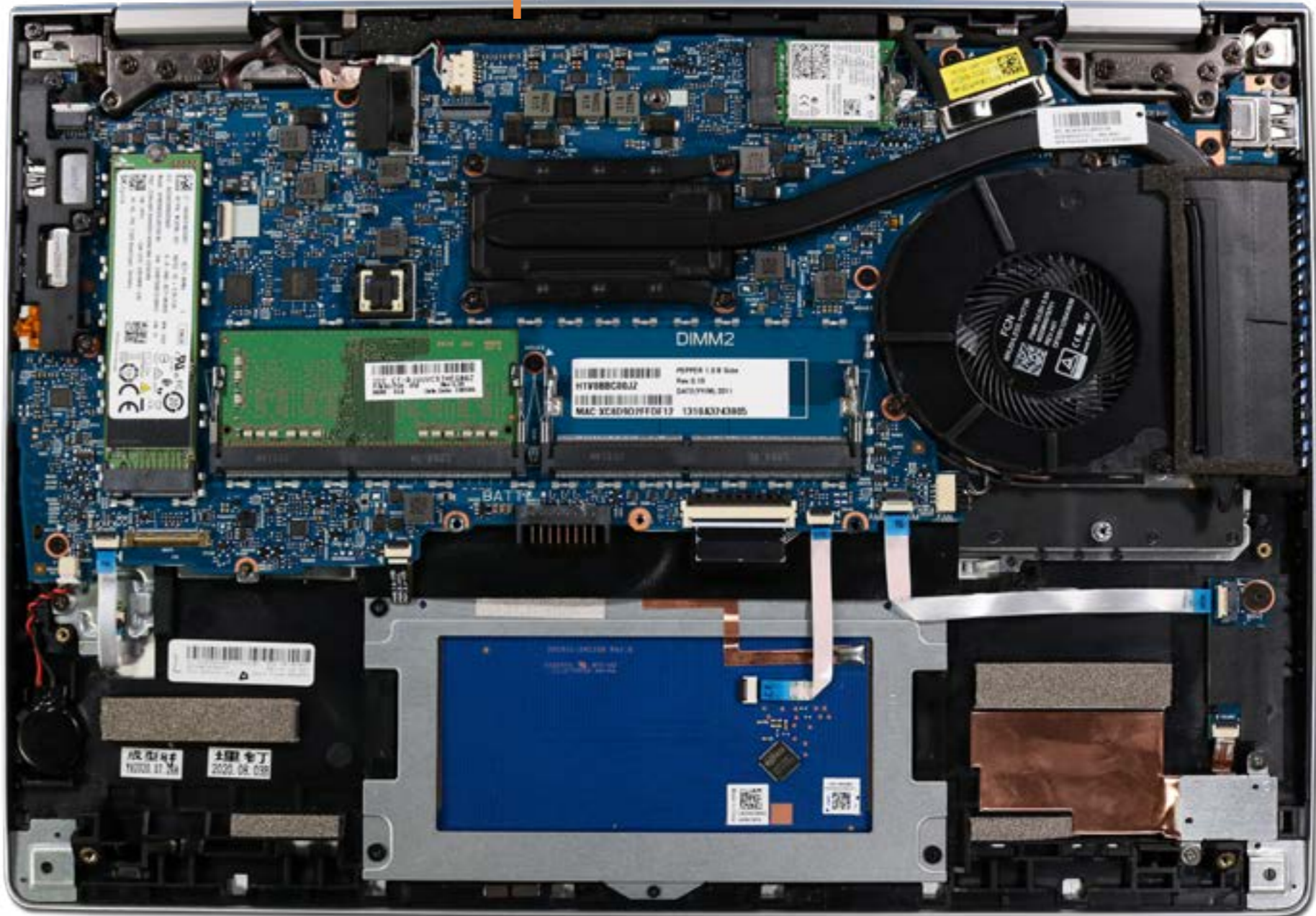
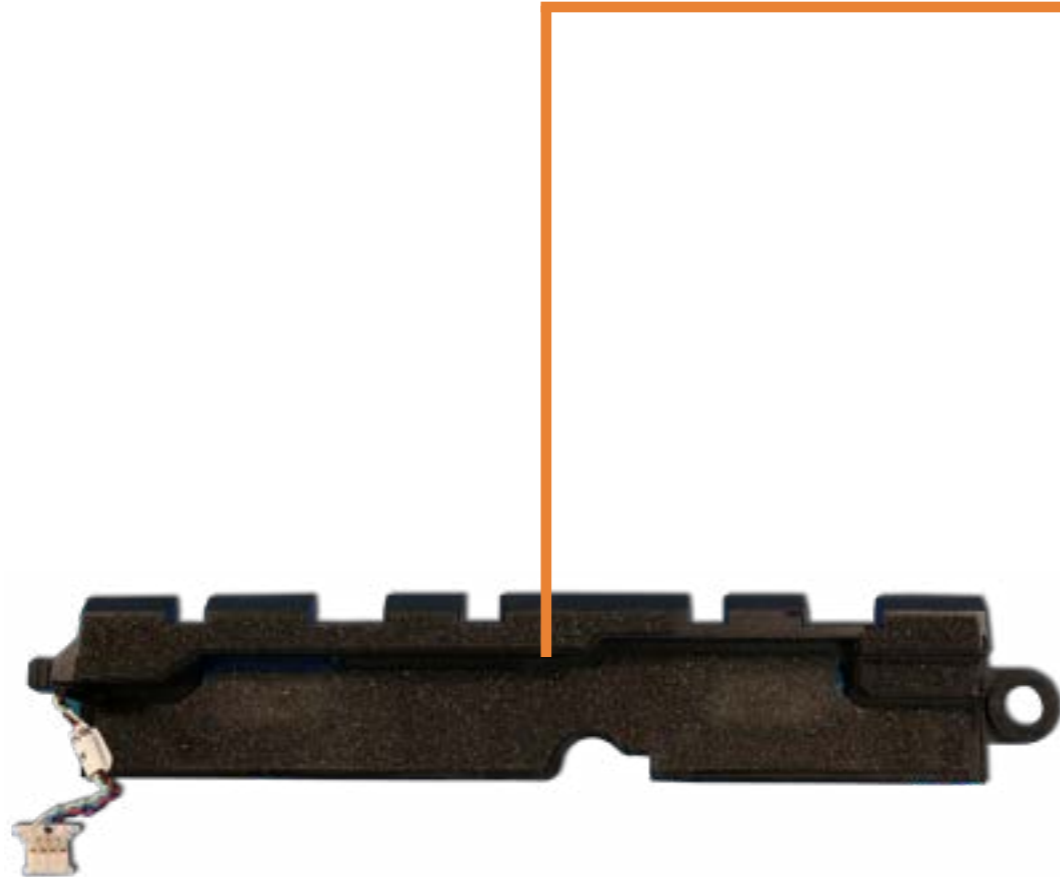


[Go to External Views](#)



# Speaker Assembly

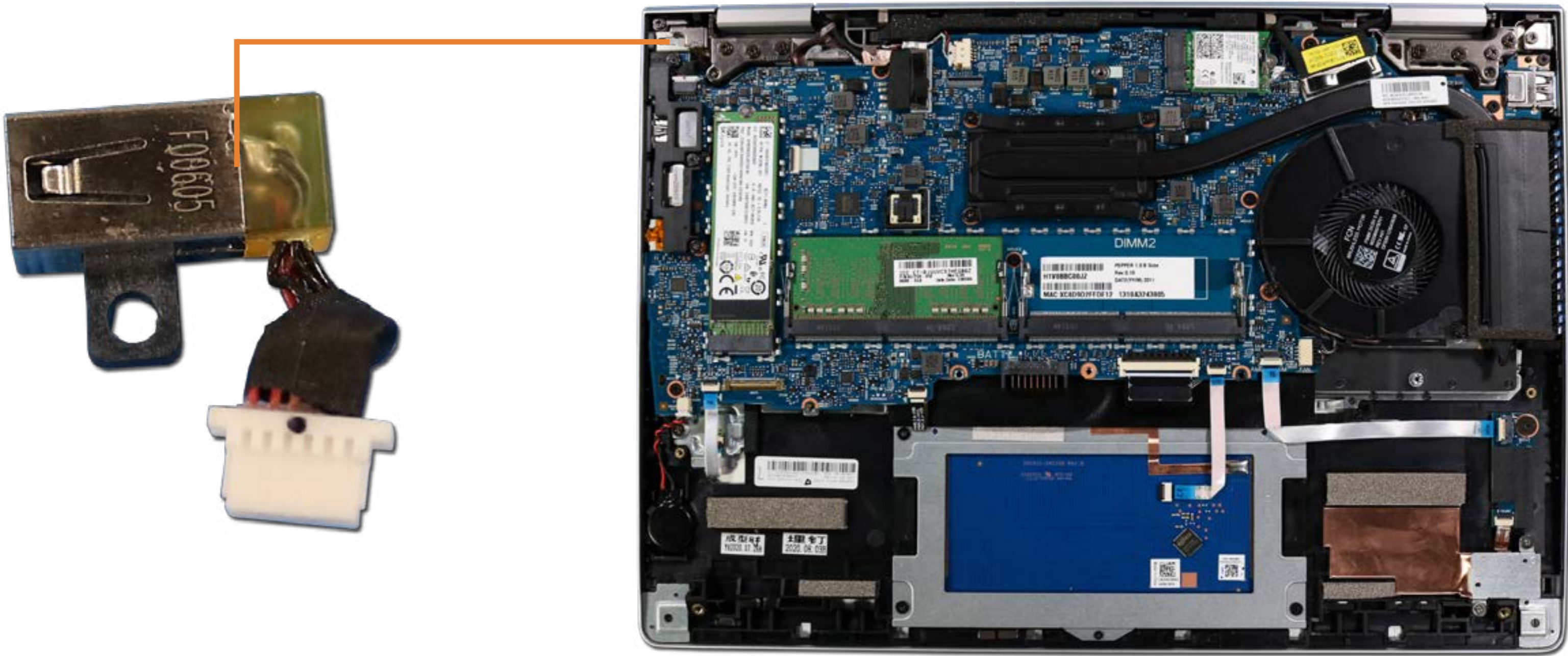
- Base Enclosure
- Battery
- M.2 Solid State Drive
- Memory Module
- Wireless LAN Module
- I/O Bracket
- Touchpad
- World-Facing Webcam
- Transfer Board
- RTC Battery
- System Fan
- Heat Sink
- System Board (top)
- System Board (bottom)
- Speaker Assembly**
- DC-In Connector
- Fingerprint Reader
- Display Panel Assembly
- Top Cover with Keyboard



[Go to External Views](#)

# DC-In Connector

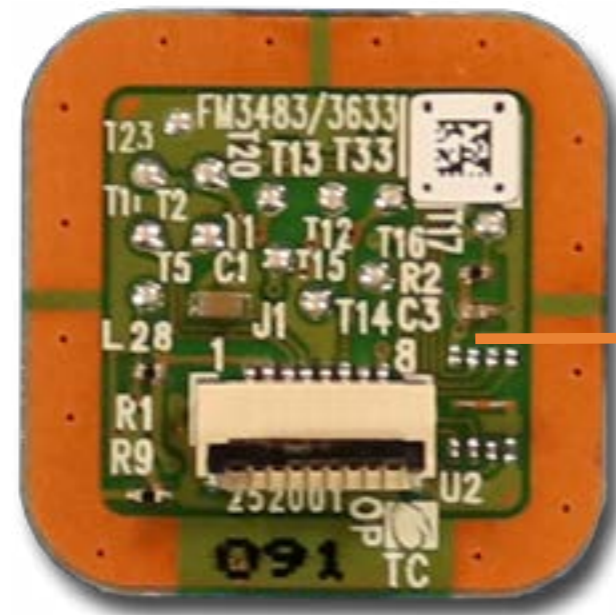
- Base Enclosure
- Battery
- M.2 Solid State Drive
- Memory Module
- Wireless LAN Module
- I/O Bracket
- Touchpad
- World-Facing Webcam
- Transfer Board
- RTC Battery
- System Fan
- Heat Sink
- System Board (top)
- System Board (bottom)
- Speaker Assembly
- DC-In Connector**
- Fingerprint Reader
- Display Panel Assembly
- Top Cover with Keyboard



[Go to External Views](#)

# Fingerprint Reader

- Base Enclosure
- Battery
- M.2 Solid State Drive
- Memory Module
- Wireless LAN Module
- I/O Bracket
- Touchpad
- World-Facing Webcam
- Transfer Board
- RTC Battery
- System Fan
- Heat Sink
- System Board (top)
- System Board (bottom)
- Speaker Assembly
- DC-In Connector
- Fingerprint Reader**
- Display Panel Assembly
- Top Cover with Keyboard



Go to External Views

# Display Panel Assembly

- Base Enclosure
- Battery
- M.2 Solid State Drive
- Memory Module
- Wireless LAN Module
- I/O Bracket
- Touchpad
- World-Facing Webcam
- Transfer Board
- RTC Battery
- System Fan
- Heat Sink
- System Board (top)
- System Board (bottom)
- Speaker Assembly
- DC-In Connector
- Fingerprint Reader
- Display Panel Assembly**
- Top Cover with Keyboard



[Go to External Views](#)

# Top Cover with Keyboard

- Base Enclosure
- Battery
- M.2 Solid State Drive
- Memory Module
- Wireless LAN Module
- I/O Bracket
- Touchpad
- World-Facing Webcam
- Transfer Board
- RTC Battery
- System Fan
- Heat Sink
- System Board (top)
- System Board (bottom)
- Speaker Assembly
- DC-In Connector
- Fingerprint Reader
- Display Panel Assembly
- Top Cover with Keyboard**



[Go to External Views](#)