



Setup Guide

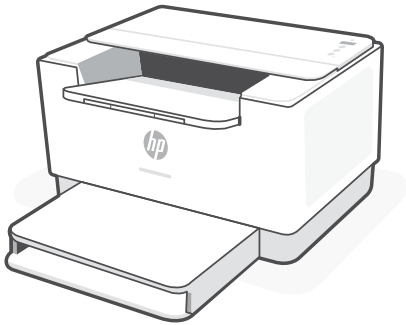
Panduan Penyetelan

설정 설명서

คู่มือการติดตั้ง

安装指南

Hướng dẫn Cài đặt



HP LaserJet
M207-M212 series

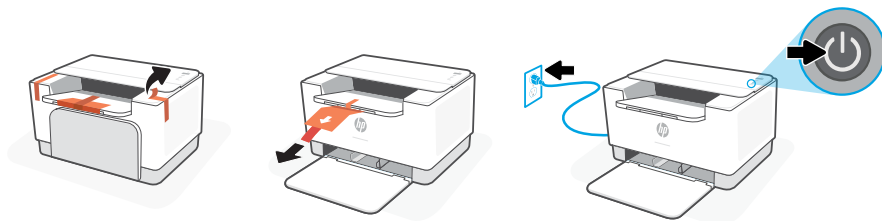
1



English, Bahasa Indonesia, 한국어 2

ภาษาไทย, 繁體中文, Tiếng Việt 4

1

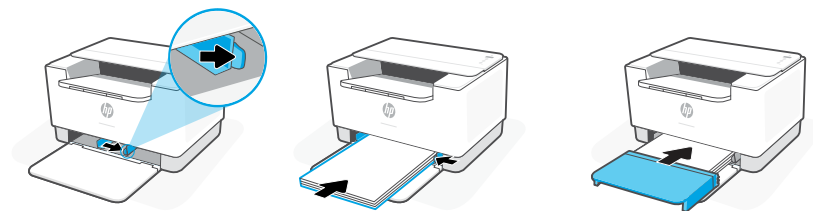


EN Remove all tape and pull the paper sheet from the printer. Plug in and turn on the printer.

ID Lepas semua pita dan tarik lembar kertas dari printer. Colokkan ke sumber listrik, kemudian hidupkan printer.

KO 테이프를 모두 제거하고 프린터에서 용지를 잡아 빼냅니다. 프린터 플러그를 꽂고 스위치를 켭니다.

2

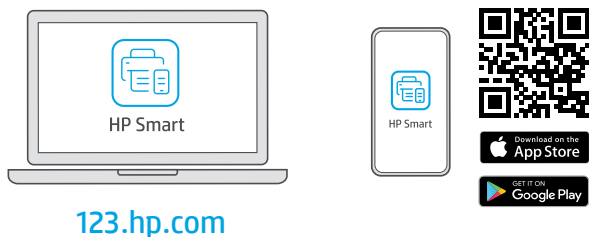


EN Slide out the guides. Load Letter or A4 paper and adjust the guides. Slide the tray cover into place.

ID Geser keluar pemandu. Masukkan kertas Letter atau A4 dan sesuaikan pemandu. Geser penutup baki ke tempatnya.

KO 가이드를 밀어냅니다. 레터 용지나 A4 용지를 넣고 가이드를 조정합니다. 용지함 덮개를 제 자리에 밀어 넣습니다.

3



123.hp.com

EN Install the **required** HP Smart software from 123.hp.com or your app store on a computer or mobile device.

ID Instal perangkat lunak HP Smart yang **diperlukan** dari 123.hp.com atau toko aplikasi Anda di komputer atau perangkat seluler.

KO 123.hp.com 이나 컴퓨터 또는 모바일 기기의 앱스토어에서 **필요한** HP Smart 소프트웨어를 설치합니다.

4

EN

Follow instructions in HP Smart to connect the printer to a network and finish setup.



If connecting the printer to Wi-Fi, your computer or mobile device must be near the printer during setup. See **Reference Guide** for Wi-Fi troubleshooting and tips.

ID

Ikuti petunjuk di HP Smart untuk menghubungkan printer ke jaringan dan menyelesaikan penyetelan.



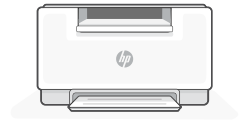
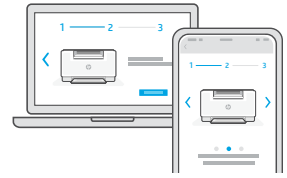
Jika menghubungkan printer ke Wi-Fi, komputer atau perangkat seluler Anda harus berada di dekat printer selama penyetelan. Lihat **Panduan Referensi** untuk mendapatkan info seputar pemecahan masalah Wi-Fi dan kiat.

KO

HP Smart의 지침을 따라 프린터를 네트워크에 연결하고 설정을 마칩니다.



프린터를 Wi-Fi에 연결할 경우, 설정하는 동안 컴퓨터나 모바일 기기가 프린터 근처에 있어야 합니다. Wi-Fi 문제 해결과 팁에 대해서는 **참조 설명서**를 참조하십시오.



EN

Get help with setup

Find setup information and videos online.

ID

Ottenere assistenza nella configurazione

Online sono disponibili informazioni e video relativi alla configurazione.

KO

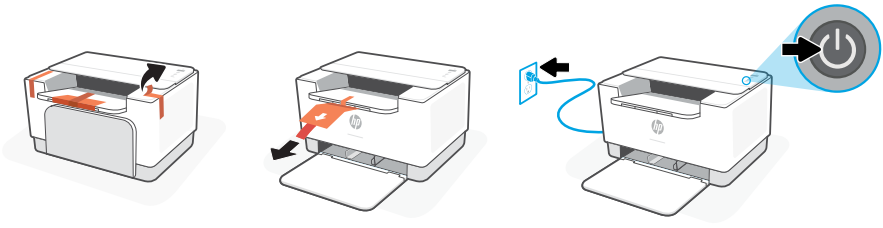
설정 시 도움받기

온라인에서 설정 정보와 동영상을 찾으십시오.

hp.com/support/printer-setup



1

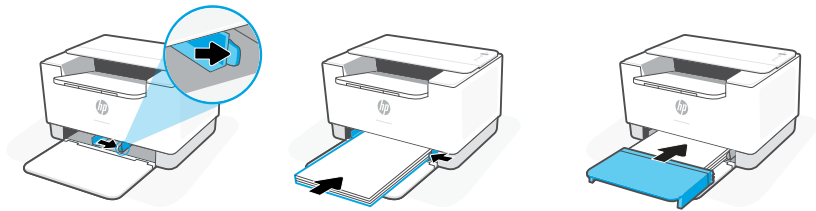


TH แกะเทปออกให้หมด แล้วดึงแผ่นกระดาษออกจากเครื่องพิมพ์ เสียบปลั๊กแล้วเปิดเครื่องพิมพ์

ZHTW 取下所有膠帶，並將印表機內的紙張取出。插上電源線，然後開啟印表機。

VI Gỡ tất cả băng dán và kéo tờ giấy khỏi máy in. Cắm phích điện và bật nguồn máy in.

2

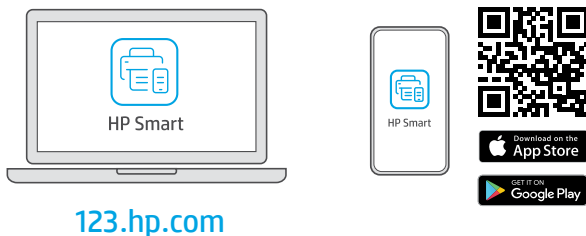


TH เลื่อนตัวกันออกใส่กระดาษ Letter หรือ A4 แล้วปรับตัวกัน เลื่อนฝาครอบถาดกลับเข้าที่

ZHTW 滑出導板。裝入 Letter 或 A4 紙張，然後調整導板。將紙匣蓋板滑回原位。

VI Trượt các thanh dẫn ra. Nạp giấy khổ Letter hoặc A4, sau đó điều chỉnh thanh dẫn. Trượt nắp khay vào vị trí.

3



123.hp.com

TH ติดตั้งซอฟต์แวร์ HP Smart ที่จำเป็นต้องใช้จาก 123.hp.com หรือ App Store ของคุณบนคอมพิวเตอร์หรืออุปกรณ์เคลื่อนที่

ZHTW 在電腦或行動裝置上，從 123.hp.com 或您的應用程式商店安裝所需的 HP Smart 軟體。

VI Cài đặt phần mềm HP Smart được yêu cầu từ 123.hp.com hoặc cửa hàng ứng dụng trên máy tính hoặc thiết bị di động.

4

TH

ปฏิบัติตามคำแนะนำใน HP Smart เพื่อเชื่อมต่อเครื่องพิมพ์กับ
เครือข่าย แล้วดำเนินการตั้งค่าให้เสร็จ



หากต้องการเชื่อมต่อเครื่องพิมพ์กับ Wi-Fi คอมพิวเตอร์หรืออุปกรณ์
เคลื่อนที่ของคุณจะต้องอยู่ใกล้กับเครื่องพิมพ์ ในระหว่างการตั้งค่า ดูที่
คู่มืออ้างอิง เพื่อศึกษาวิธีแก้ไขปัญหา Wi-Fi และเคล็ดลับ

ZHTW

按照 HP Smart 中的指示將印表機連接至網路，
然後完成設定。



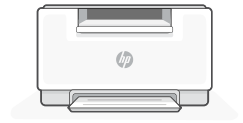
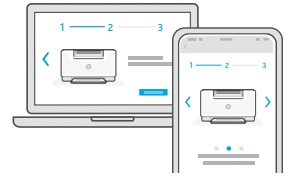
若印表機連接至 Wi-Fi，在設定期間，您的電腦或行
動裝置必須在印表機鄰近處。如需有關 Wi-Fi 疑難
排解與訣竅的資訊，請參閱**參考指南**。

VI

Làm theo hướng dẫn trong HP Smart để kết nối máy in
với mạng và hoàn thành cài đặt.



Nếu đang kết nối máy in với Wi-Fi, máy tính hoặc thiết bị
di động của bạn phải ở gần máy in trong quá trình cài đặt.
Xem **Hướng dẫn Tham khảo** để biết quy trình xử lý sự cố
và các mẹo liên quan đến Wi-Fi.



TH

ขอความช่วยเหลือเกี่ยวกับ
การตั้งค่า

ค้นหาข้อมูลและวิดีโอเกี่ยวกับการตั้งค่า
ผ่านทางออนไลน์

ZHTW

利用設定獲得協助

在線上尋找設定資訊及視訊。

VI

Yêu cầu trợ giúp liên
quan đến cài đặt

Tìm thông tin cài đặt và video trực tuyến.

hp.com/support/printer-setup





The Apple logo is a trademark of Apple Inc., registered in the U.S. and other countries.
App Store is a service mark of Apple Inc.
Android, Google Play, and the Google Play logo are trademarks of Google Inc.
© Copyright 2021 HP Development Company, L.P.



6GW62-90005



Printed in Vietnam
베트남에서 인쇄