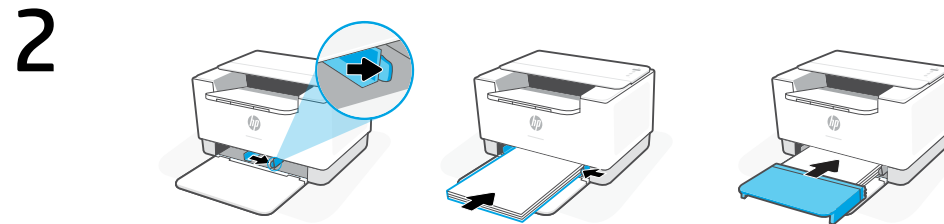


ZHCN 取下所有胶带，并取出打印机中的纸张。插入电源线，然后打开打印机。

EN Remove all tape and pull the paper sheet from the printer. Plug in and turn on the printer.



ZHCN 抽出导轨。装入 Letter 或 A4 纸，然后调整导轨。将纸盒盖板插入到位。

EN Slide out the guides. Load Letter or A4 paper and adjust the guides. Slide the tray cover into place.



ZHCN 从 123.hp.com 或应用商店将**所需的** HP Smart 软件安装到计算机或移动设备上。

EN Install the **required** HP Smart software from 123.hp.com or your app store on a computer or mobile device.

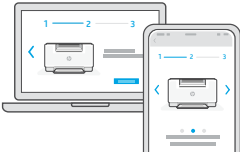

4

ZHCN 遵循 HP Smart 中的指示，将打印机连接到网络并完成设置。

EN Follow instructions in HP Smart to connect the printer to a network and finish setup.

! 如果将打印机连接到 Wi-Fi，则在设置过程中，必须将计算机或移动设备靠近打印机。有关 Wi-Fi 故障排除和提示的信息，请参阅**参考指南**。

! If connecting the printer to Wi-Fi, your computer or mobile device must be near the printer during setup. See **Reference Guide** for Wi-Fi troubleshooting and tips.

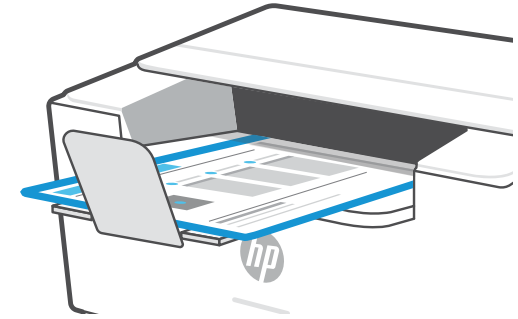




5 当完成以上安装步骤并将打印机成功连接至无线网络后, 打印机将自动打印出一张带有二维码的信息页。

A Welcome Page with a QR code will automatically print after connecting to a wireless network and completing printer setup.

如果您没有获得信息页, 请访问此网址或扫描此二维码并根据教程重新打印信息页。

If the Welcome Page does not print, follow instructions from this site to reprint the page.
<https://iot.eprintsw.com/www/faq.html>



6 使用微信扫描信息页上的二维码以启用“惠普云打印”微信小程序, 并根据页面提示完成打印机的绑定。

Launch WeChat, and then scan the QR code on the WeChat Welcome Page to launch the mini-app. Follow the on-screen instructions to complete printer pairing.



ZHCN 获取有关设置的帮助

在线查找设置信息和视频。

EN Get help with setup

Find setup information and videos online.



hp.com/support/printer-setup