

Interactive Part Locator

HP Chromebook x2 11-da0000

Welcome to the interactive part locator for the
HP Chromebook x2 11-da0000

Here's how to use it...

[External Views](#) (Click the link to navigate to the views)

On this page you will find large icons of each of the external views of this product. To view a specific view in greater detail, simply click that view.

[Parts List](#) (Click the link to navigate to the parts)

On this page, you will find a list of all of the replaceable parts for this product. To view a specific part and its location in the product, click the part name in the list.

That's it! On every page there is a link that brings you back to either the External Views or the Parts List, enabling you to navigate to whatever view or part you wish to review.

 To exit or enter full screen mode, press Ctrl + L on your keyboard

External Views

[Back to Welcome page](#)



Front open



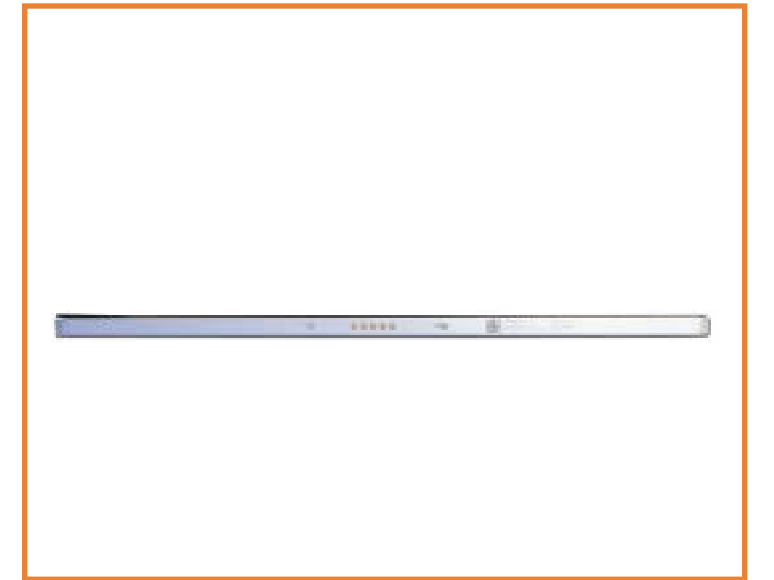
Left



Right



Front closed



Rear



Display



Top open



Top closed



Bottom



Internal

[Go to Parts List](#)

Front Open View

[Back to External Views](#)



[Go to Parts List](#)

Left View

[Back to External Views](#)

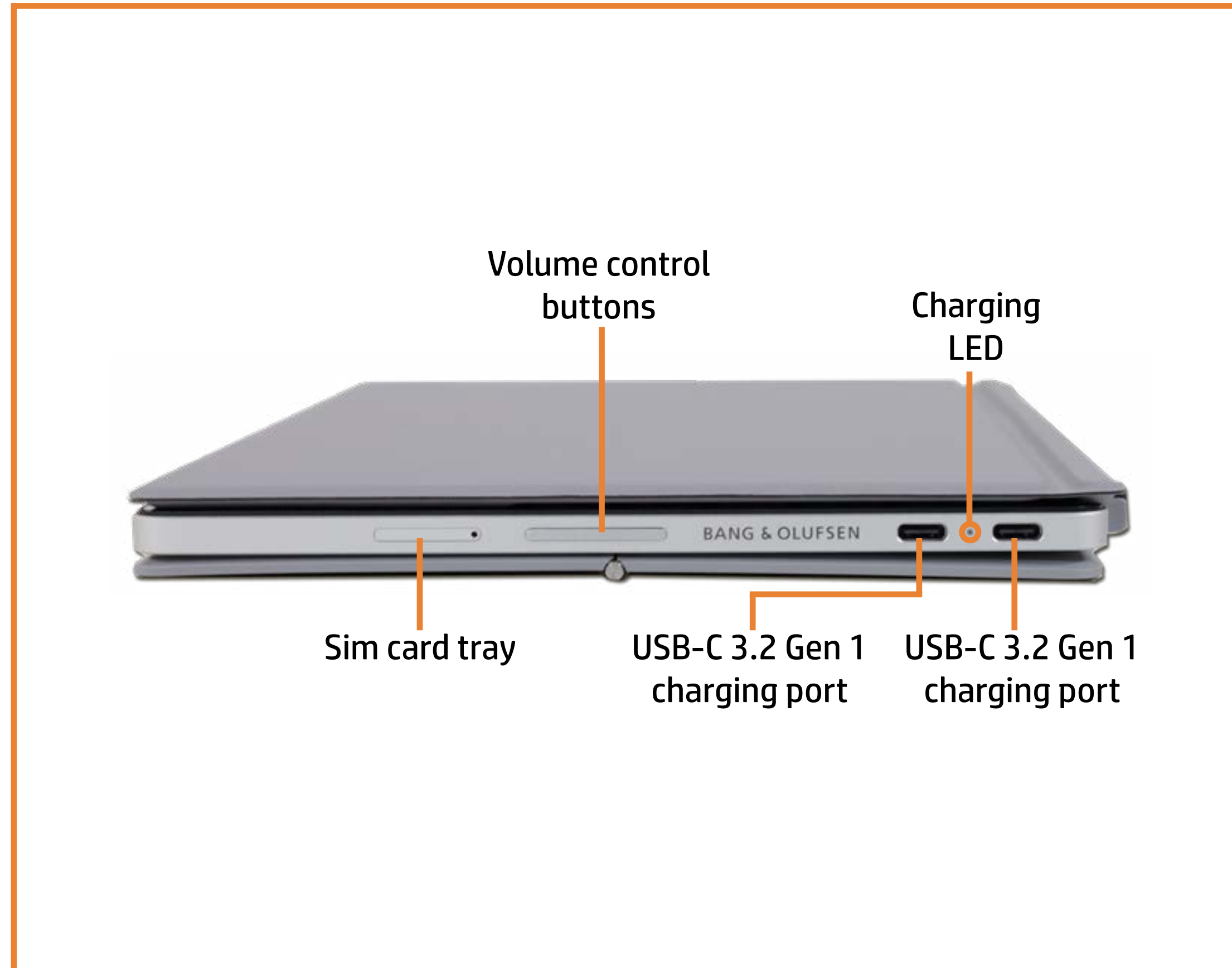


Wireless
charging dock

[Go to Parts List](#)

Right View

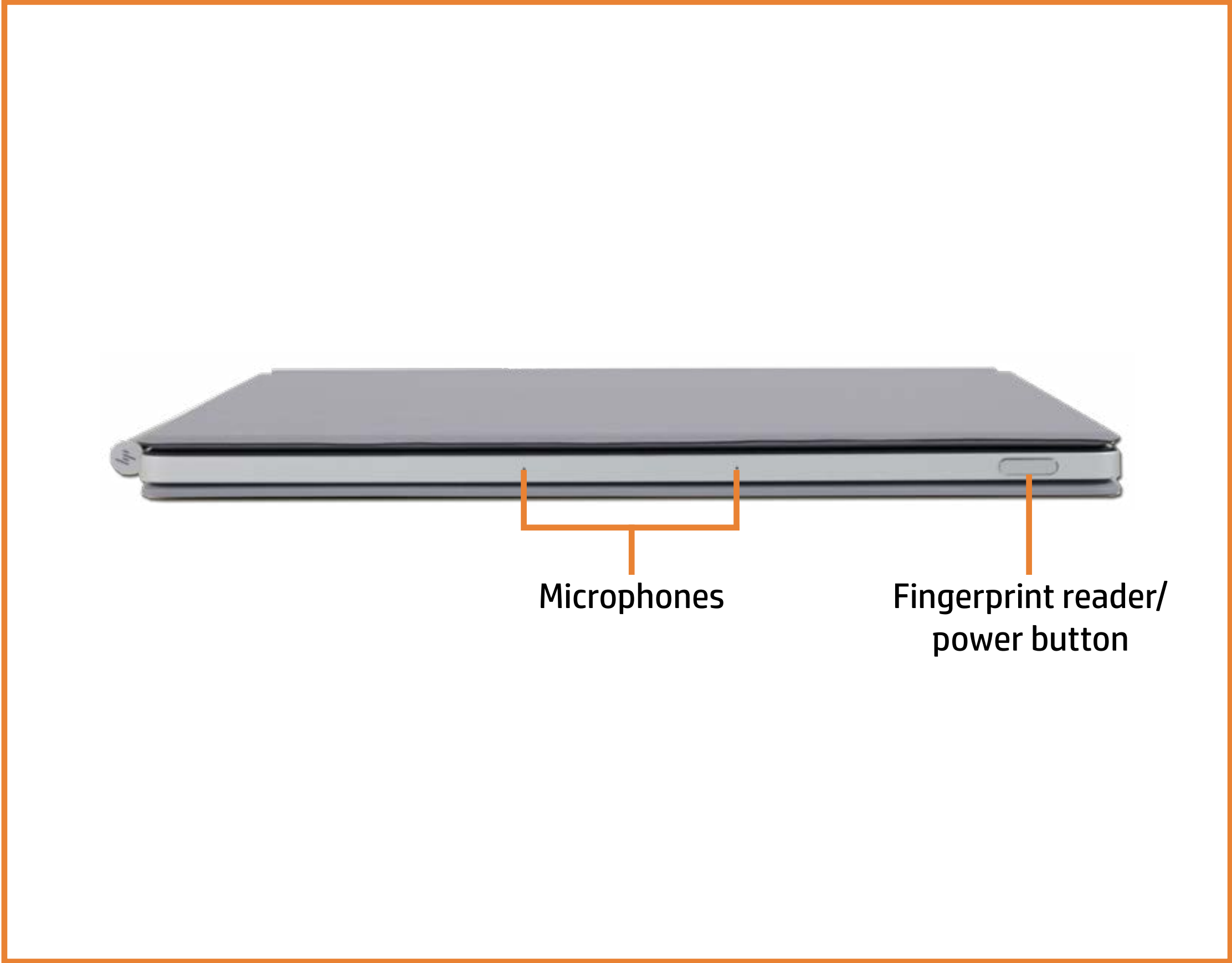
[Back to External Views](#)



[Go to Parts List](#)

Front Closed View

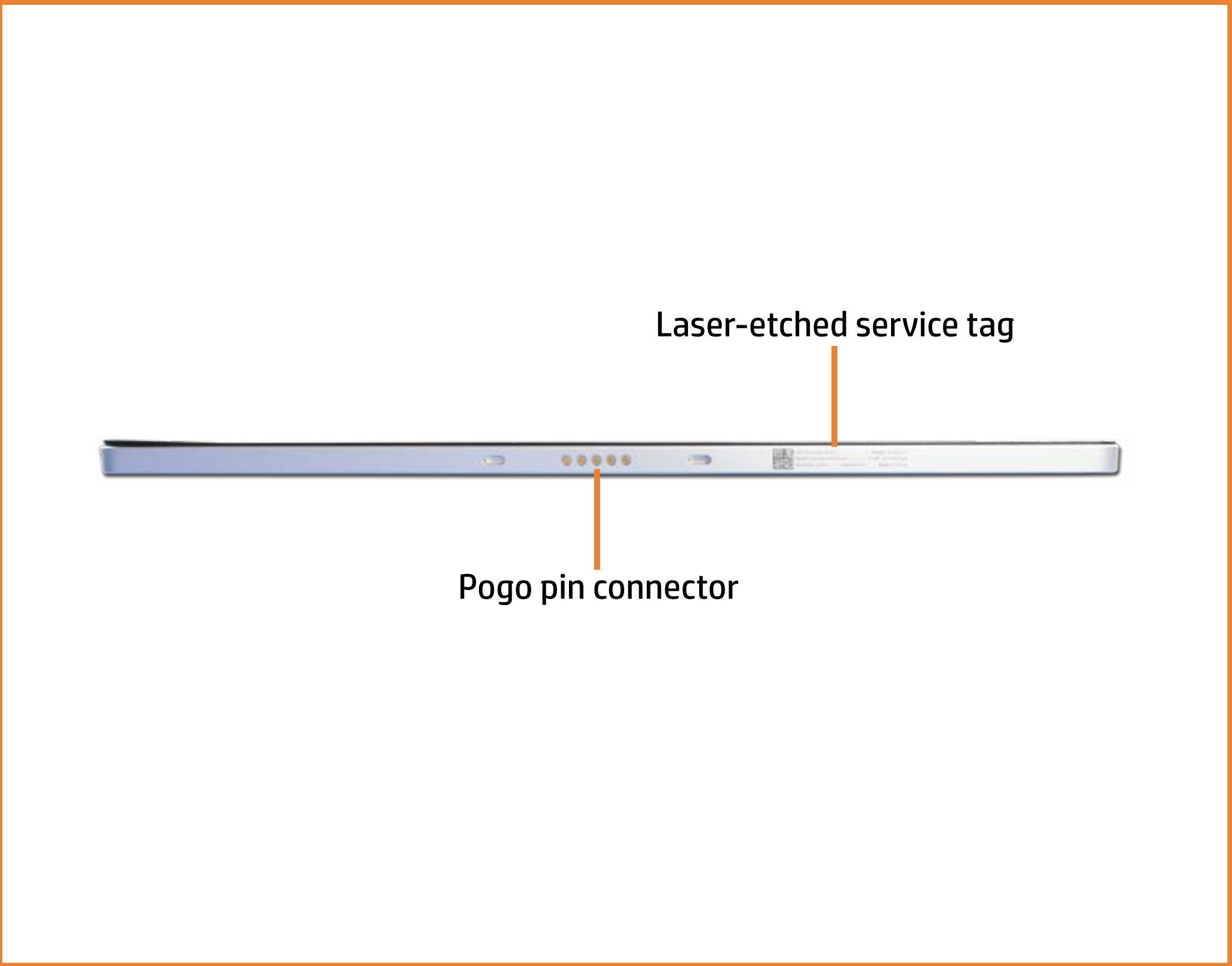
[Back to External Views](#)



[Go to Parts List](#)

Rear View

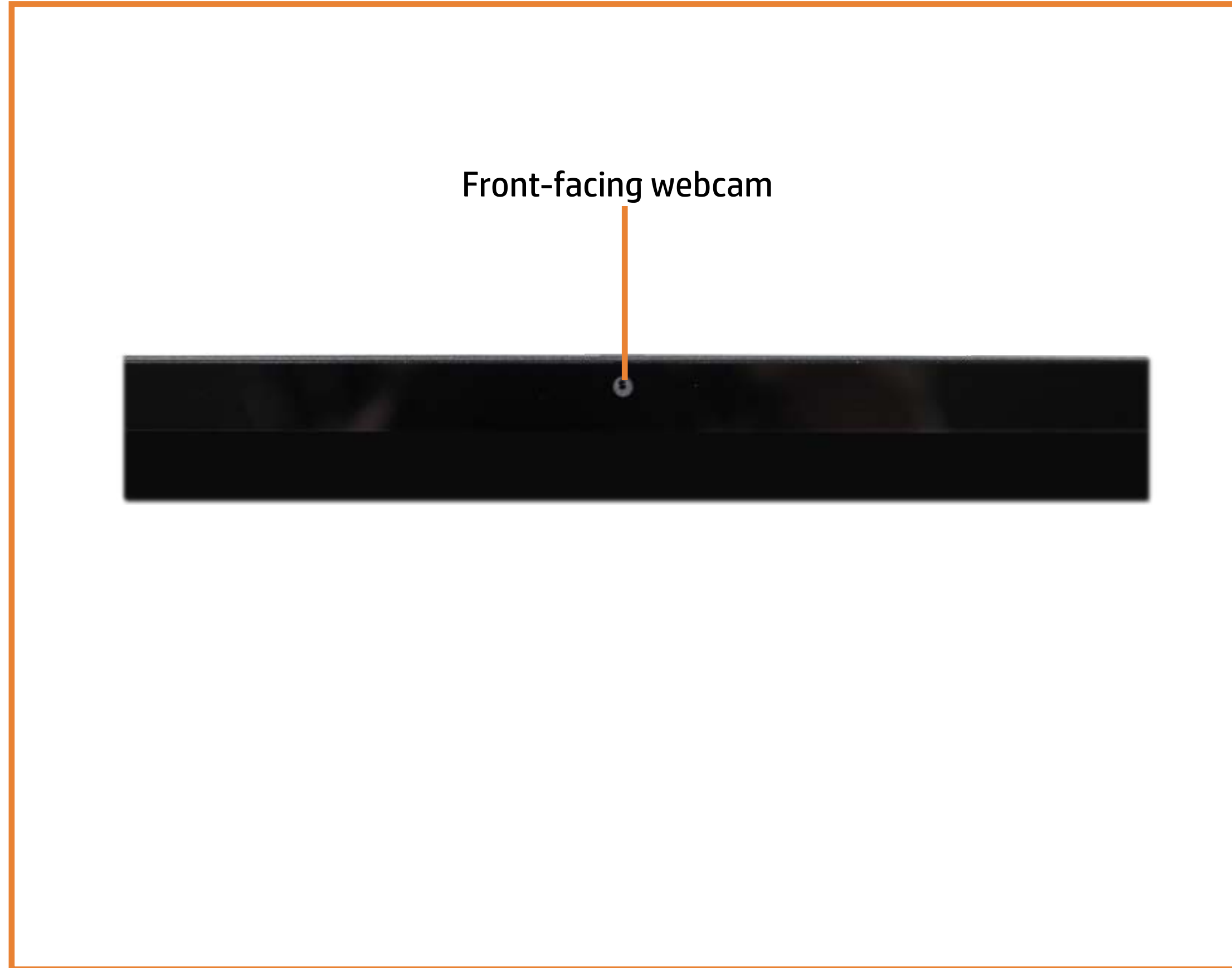
[Back to External Views](#)



[Go to Parts List](#)

Display View

[Back to External Views](#)



Front-facing webcam

[Go to Parts List](#)

Top Open View

[Back to External Views](#)

Brightness control keys

Refresh key

Browser control key

Search key

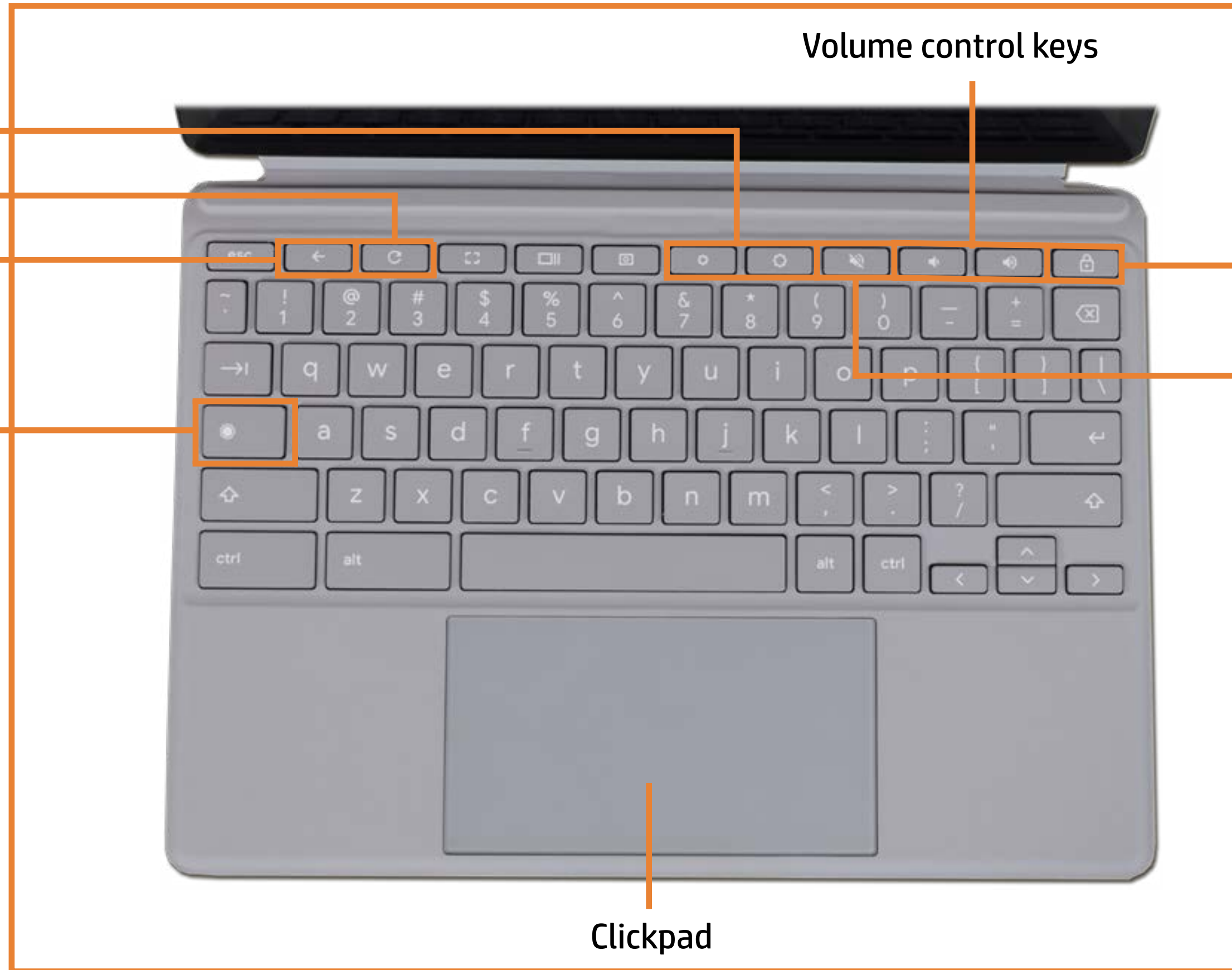
Volume control keys

Screen lock key

Audio mute key

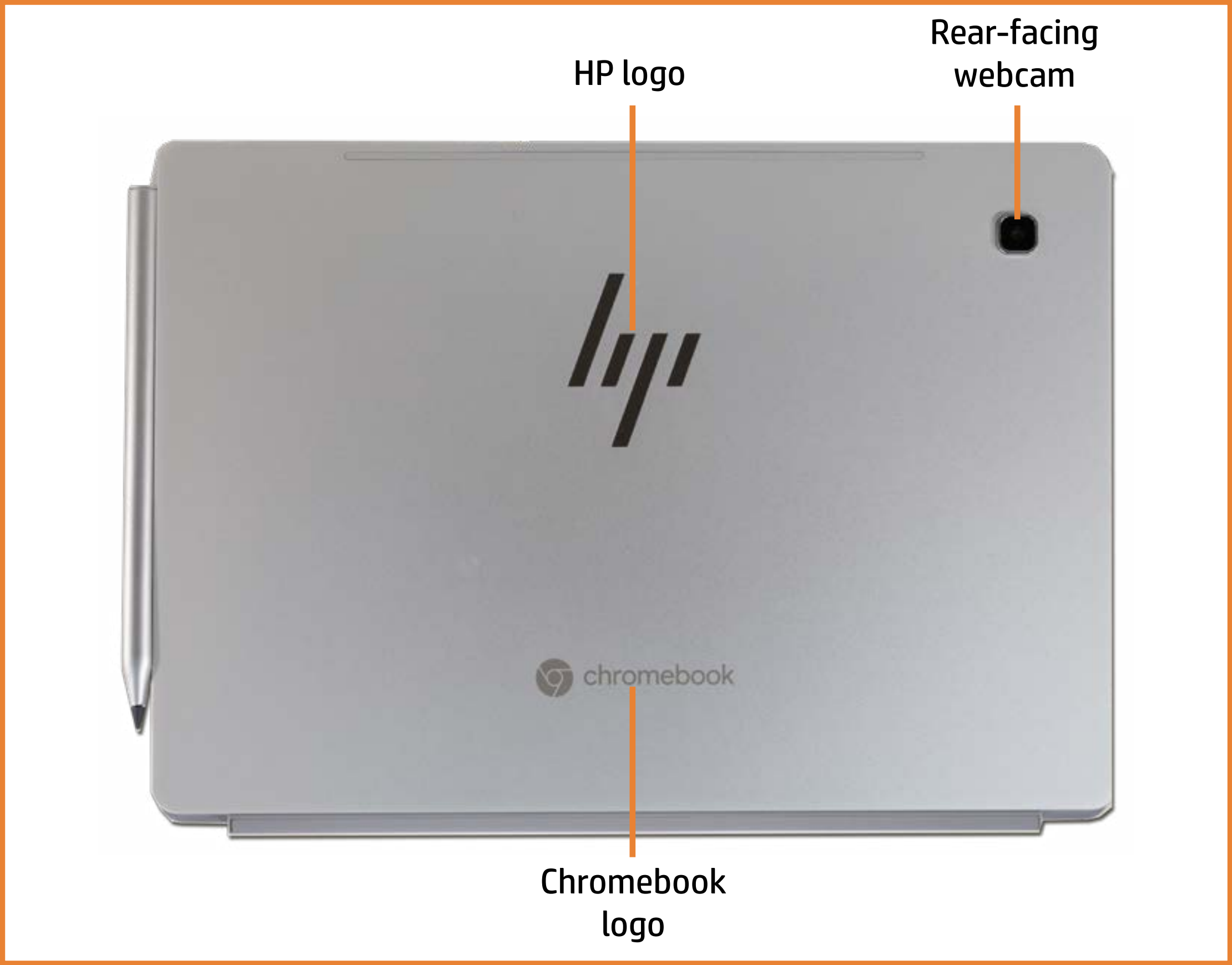
Clickpad

[Go to Parts List](#)



Top Closed View

[Back to External Views](#)



[Go to Parts List](#)

Bottom View

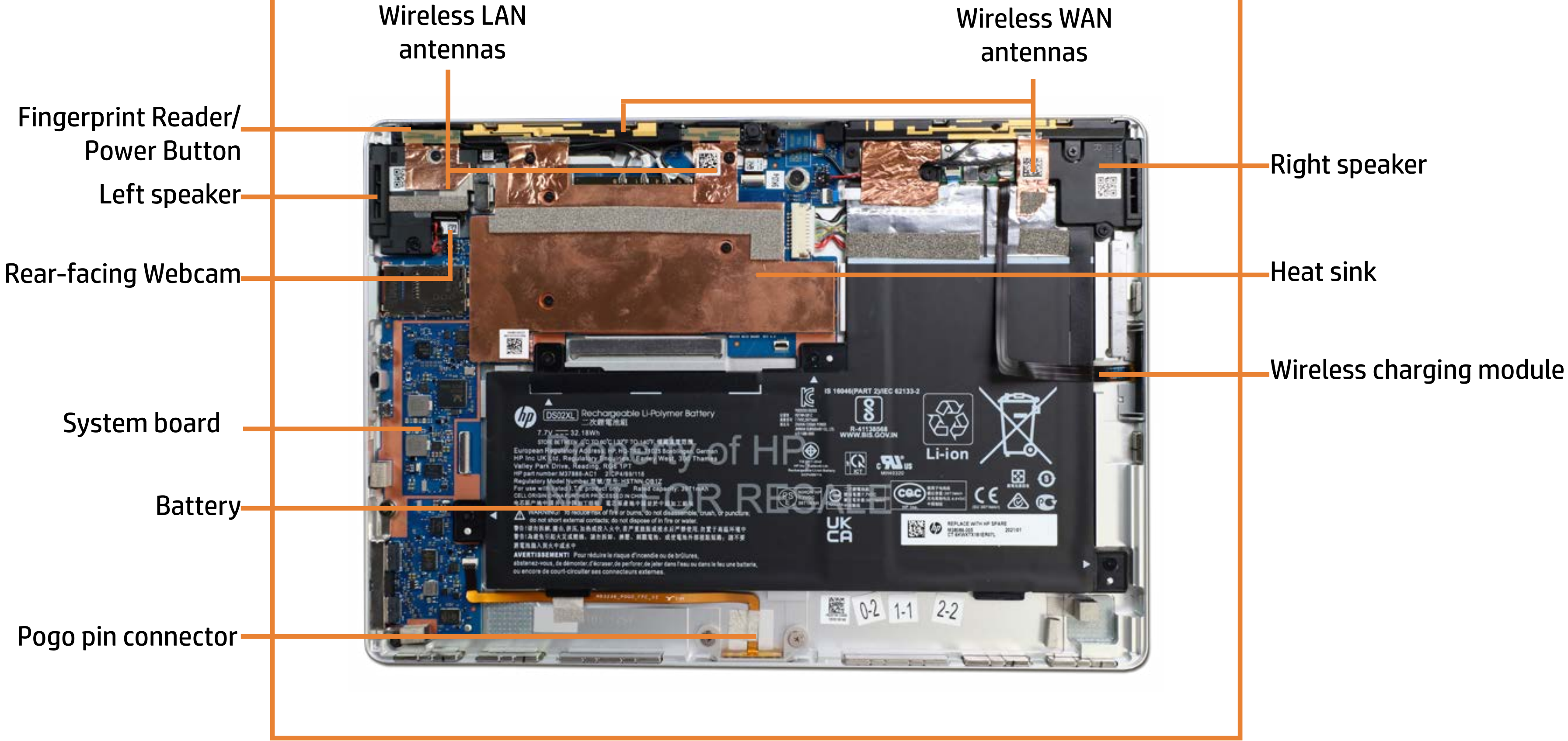
[Back to External Views](#)



[Go to Parts List](#)

Internal View

[Back to External Views](#)

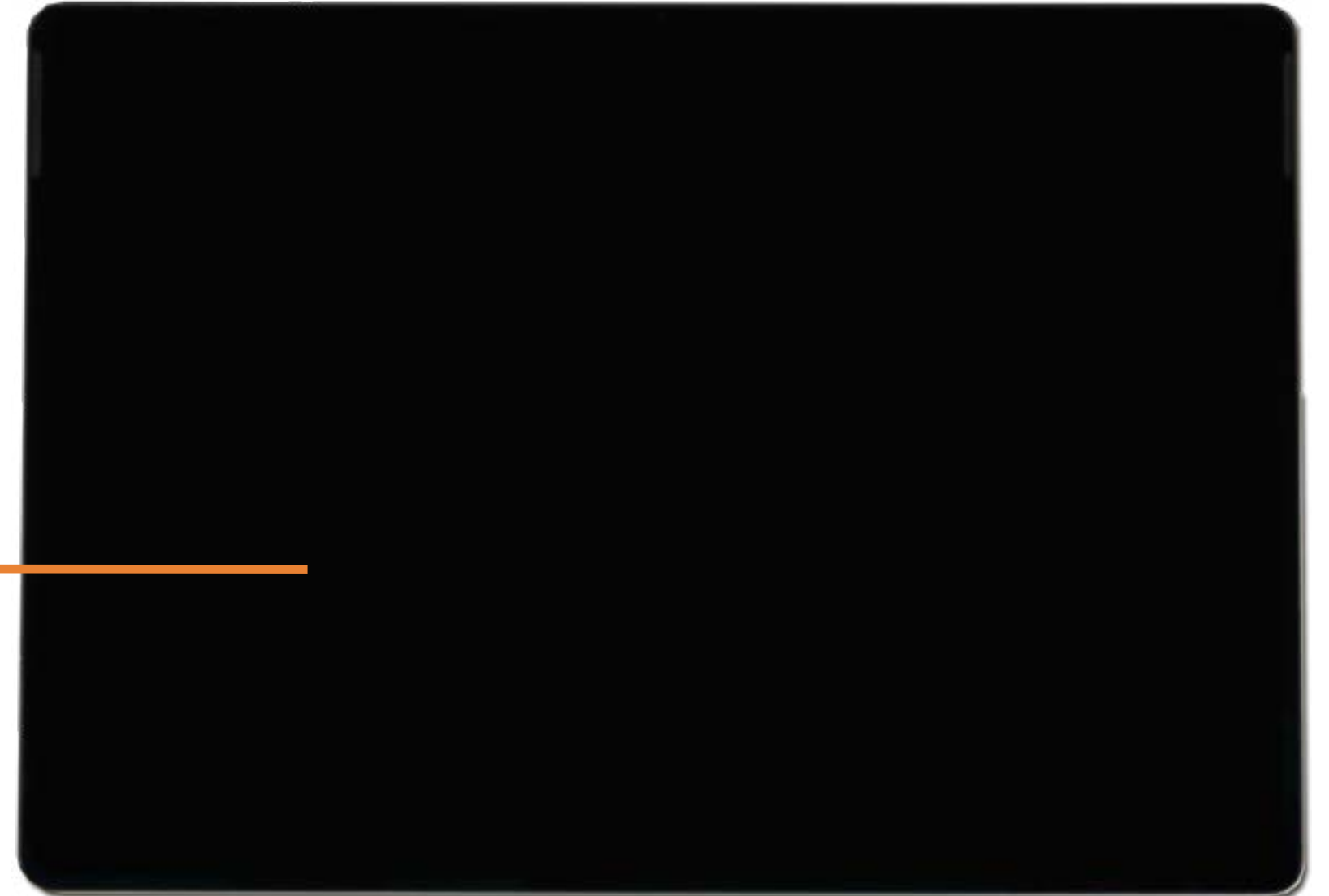


[Go to Parts List](#)

Display Panel

Display Panel

- Battery
- Wireless LAN Antennas
- Wireless WAN Antennas
- Right Speaker
- Left Speaker
- Wireless Charging Module
- Pogo Pin Connector
- Front-Facing Webcam
- Transfer Board
- Heat Sink
- Rear-Facing Webcam
- Fingerprint Reader/Power Button
- System Board (top)
- System Board (bottom)
- Display Panel Cable
- Touch Control Board Cable



[Go to External Views](#)

Battery

Display Panel

Battery

Wireless LAN Antennas

Wireless WAN Antennas

Right Speaker

Left Speaker

Wireless Charging Module

Pogo Pin Connector

Front-Facing Webcam

Transfer Board

Heat Sink

Rear-Facing Webcam

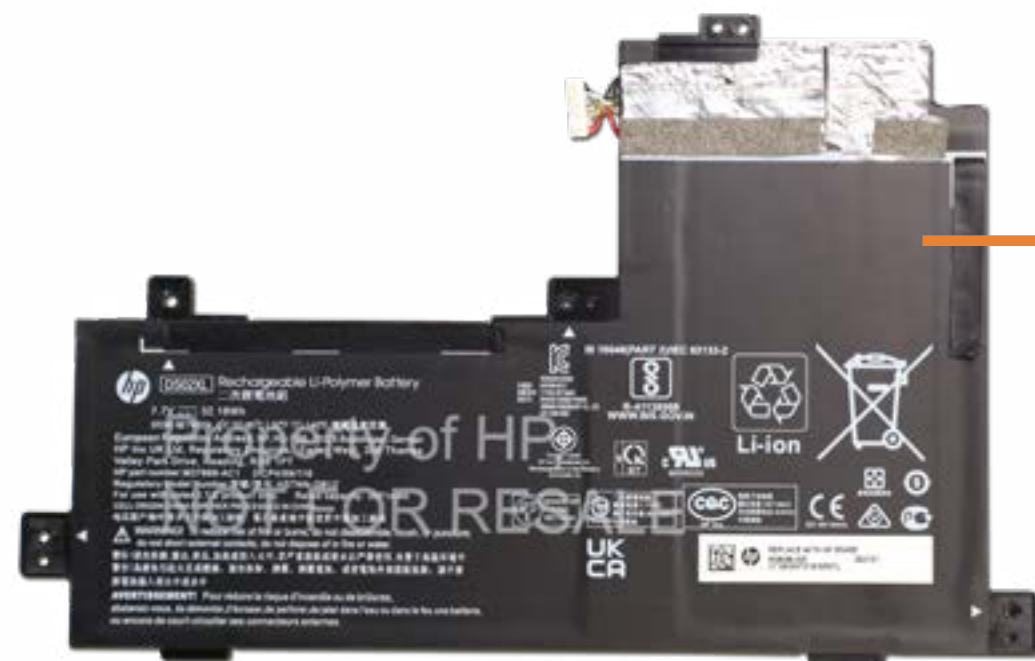
Fingerprint Reader/Power Button

System Board (top)

System Board (bottom)

Display Panel Cable

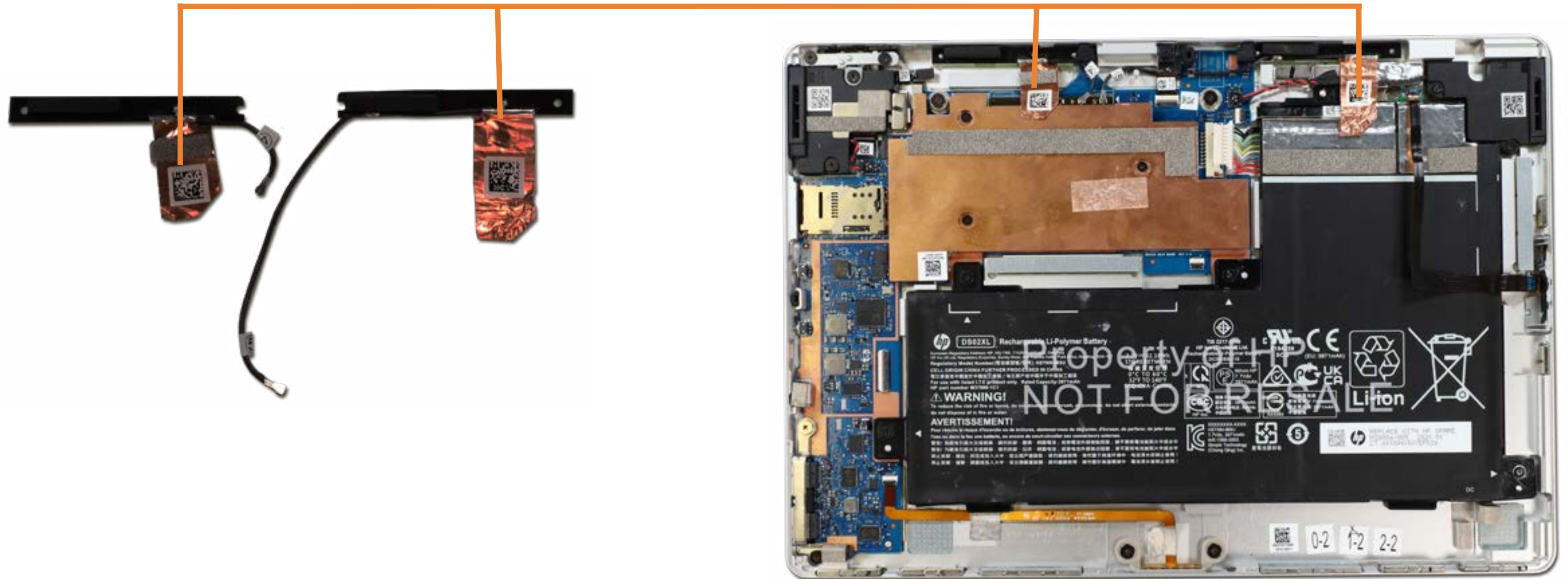
Touch Control Board Cable



[Go to External Views](#)

Wireless LAN Antennas

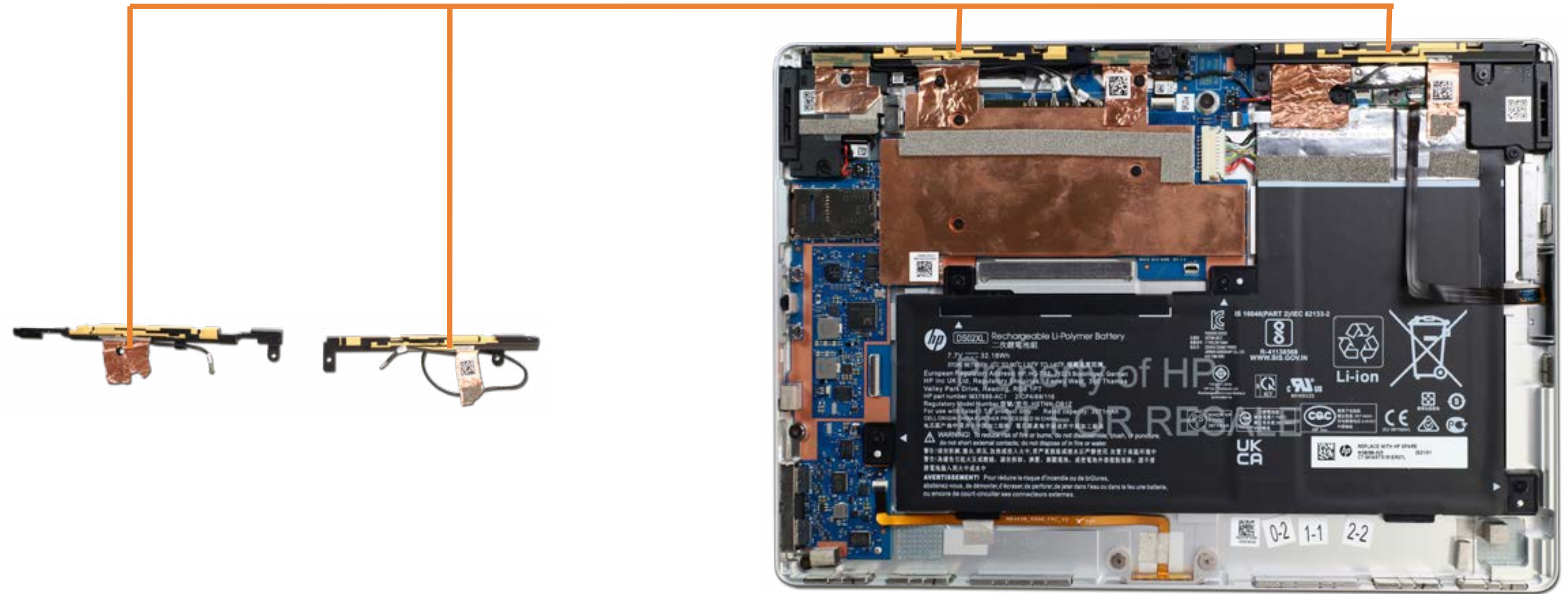
- Display Panel
- Battery
- Wireless LAN Antennas**
- Wireless WAN Antennas
- Right Speaker
- Left Speaker
- Wireless Charging Module
- Pogo Pin Connector
- Front-Facing Webcam
- Transfer Board
- Heat Sink
- Rear-Facing Webcam
- Fingerprint Reader/Power Button
- System Board (top)
- System Board (bottom)
- Display Panel Cable
- Touch Control Board Cable



[Go to External Views](#)

Wireless WAN Antennas

- Display Panel
- Battery
- Wireless LAN Antennas
- Wireless WAN Antennas**
- Right Speaker
- Left Speaker
- Wireless Charging Module
- Pogo Pin Connector
- Front-Facing Webcam
- Transfer Board
- Heat Sink
- Rear-Facing Webcam
- Fingerprint Reader/Power Button
- System Board (top)
- System Board (bottom)
- Display Panel Cable
- Touch Control Board Cable



[Go to External Views](#)

Right Speaker

- Display Panel
- Battery
- Wireless LAN Antennas
- Wireless WAN Antennas
- Right Speaker**
- Left Speaker
- Wireless Charging Module
- Pogo Pin Connector
- Front-Facing Webcam
- Transfer Board
- Heat Sink
- Rear-Facing Webcam
- Fingerprint Reader/Power Button
- System Board (top)
- System Board (bottom)
- Display Panel Cable
- Touch Control Board Cable



[Go to External Views](#)

Left Speaker

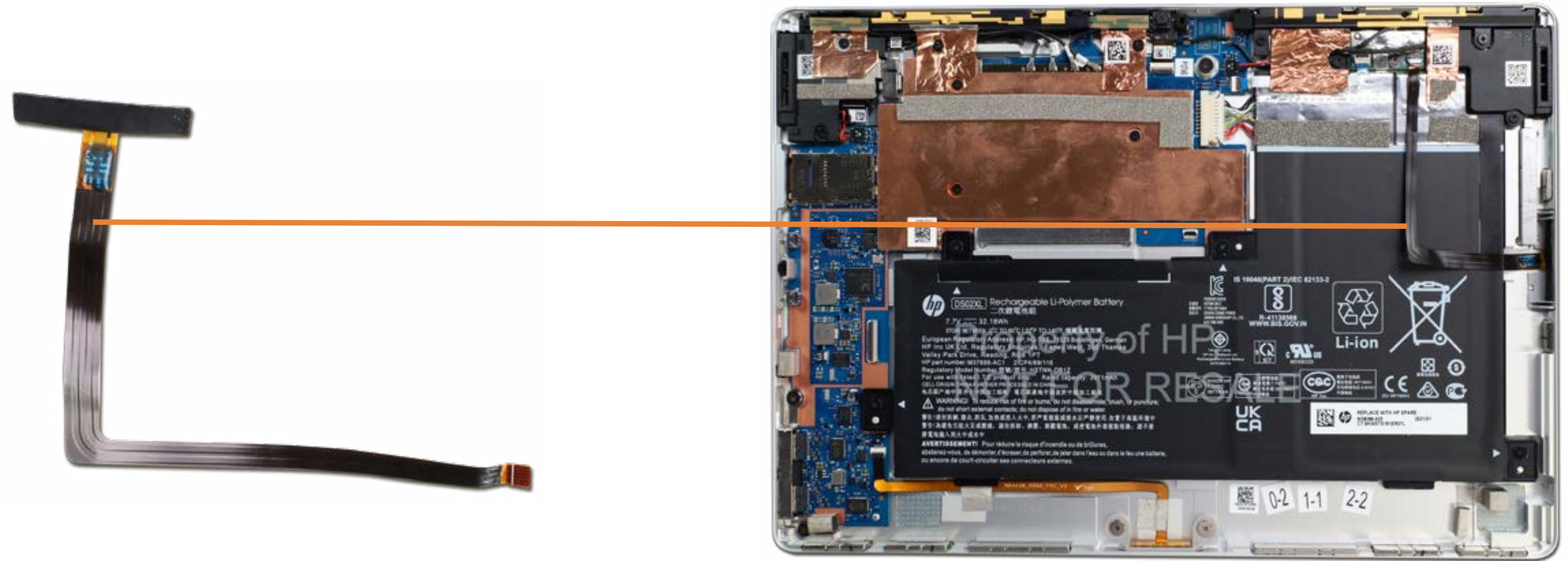
- Display Panel
- Battery
- Wireless LAN Antennas
- Wireless WAN Antennas
- Right Speaker
- Left Speaker**
- Wireless Charging Module
- Pogo Pin Connector
- Front-Facing Webcam
- Transfer Board
- Heat Sink
- Rear-Facing Webcam
- Fingerprint Reader/Power Button
- System Board (top)
- System Board (bottom)
- Display Panel Cable
- Touch Control Board Cable



[Go to External Views](#)

Wireless Charging Module

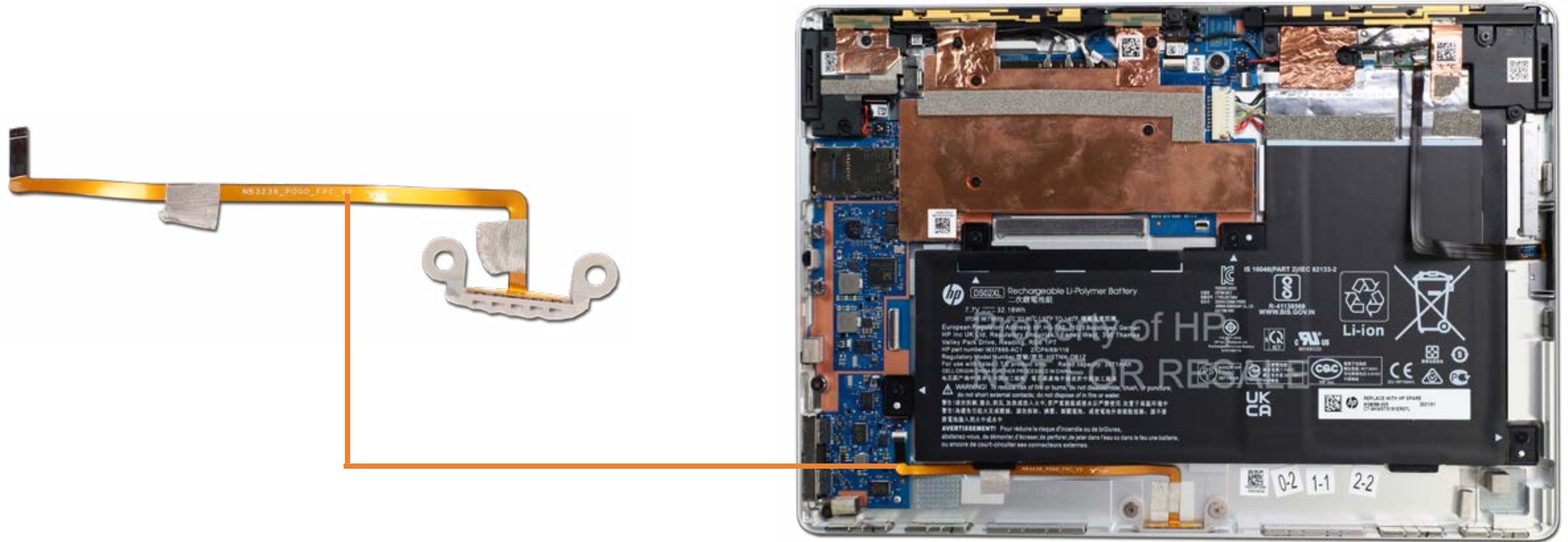
- Display Panel
- Battery
- Wireless LAN Antennas
- Wireless WAN Antennas
- Right Speaker
- Left Speaker
- Wireless Charging Module**
- Pogo Pin Connector
- Front-Facing Webcam
- Transfer Board
- Heat Sink
- Rear-Facing Webcam
- Fingerprint Reader/Power Button
- System Board (top)
- System Board (bottom)
- Display Panel Cable
- Touch Control Board Cable



[Go to External Views](#)

Pogo Pin Connector

- Display Panel
- Battery
- Wireless LAN Antennas
- Wireless WAN Antennas
- Right Speaker
- Left Speaker
- Wireless Charging Module
- Pogo Pin Connector**
- Front-Facing Webcam
- Transfer Board
- Heat Sink
- Rear-Facing Webcam
- Fingerprint Reader/Power Button
- System Board (top)
- System Board (bottom)
- Display Panel Cable
- Touch Control Board Cable



[Go to External Views](#)

Front-Facing Webcam

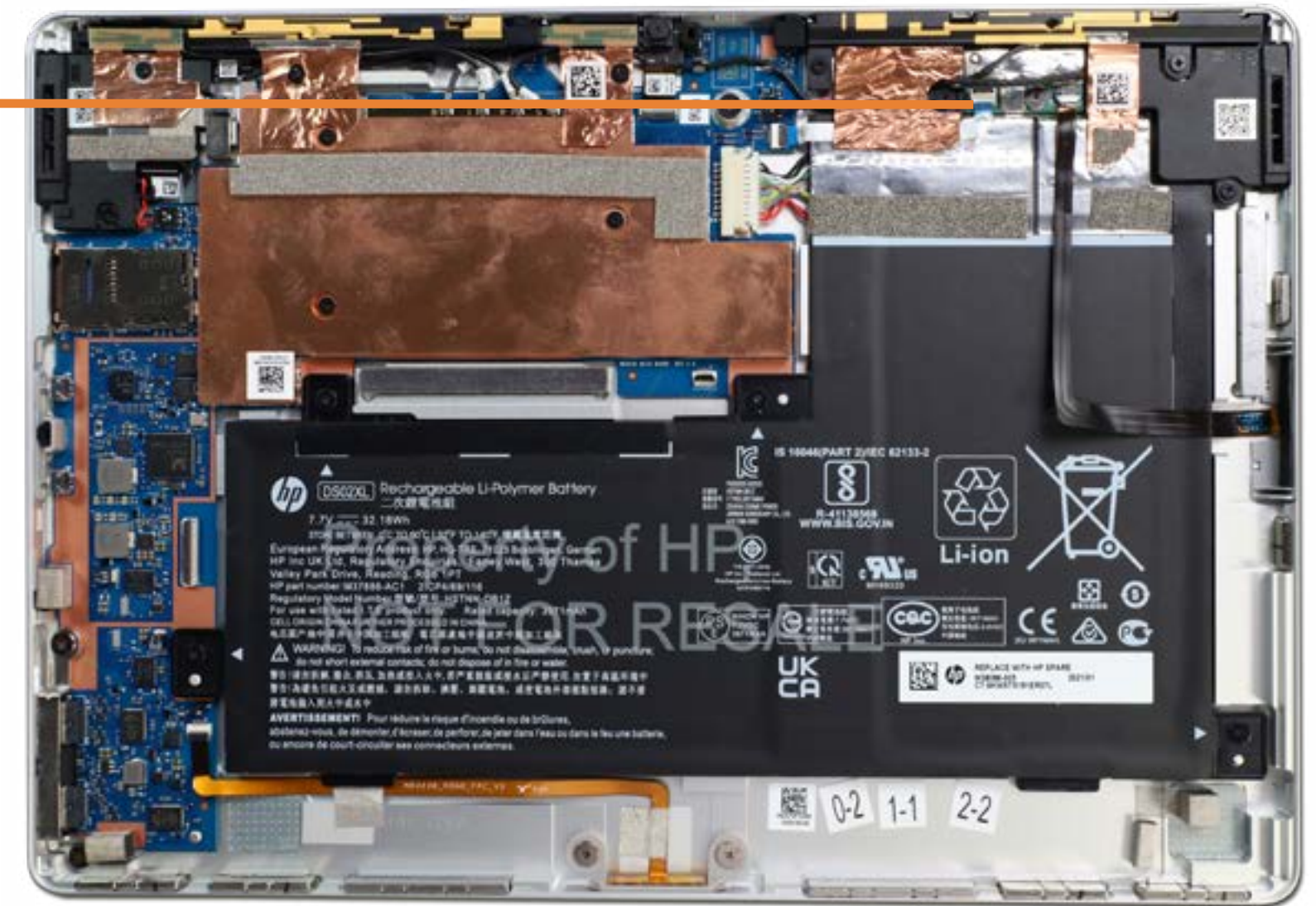
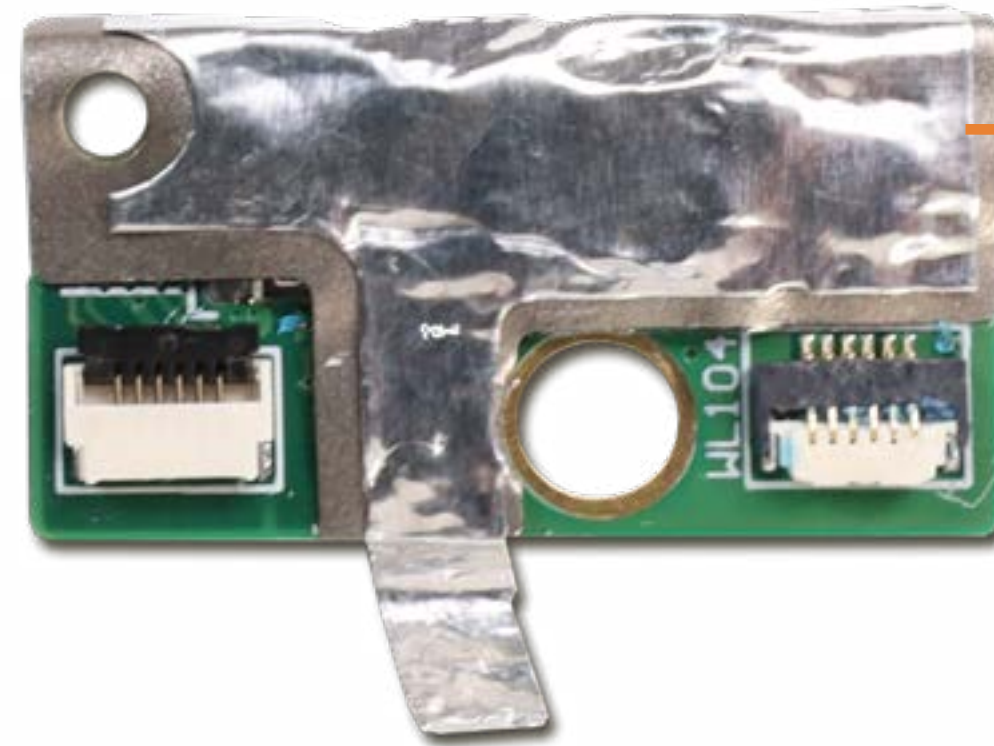
- Display Panel
- Battery
- Wireless LAN Antennas
- Wireless WAN Antennas
- Right Speaker
- Left Speaker
- Wireless Charging Module
- Pogo Pin Connector
- Front-Facing Webcam**
- Transfer Board
- Heat Sink
- Rear-Facing Webcam
- Fingerprint Reader/Power Button
- System Board (top)
- System Board (bottom)
- Display Panel Cable
- Touch Control Board Cable



[Go to External Views](#)

Transfer Board

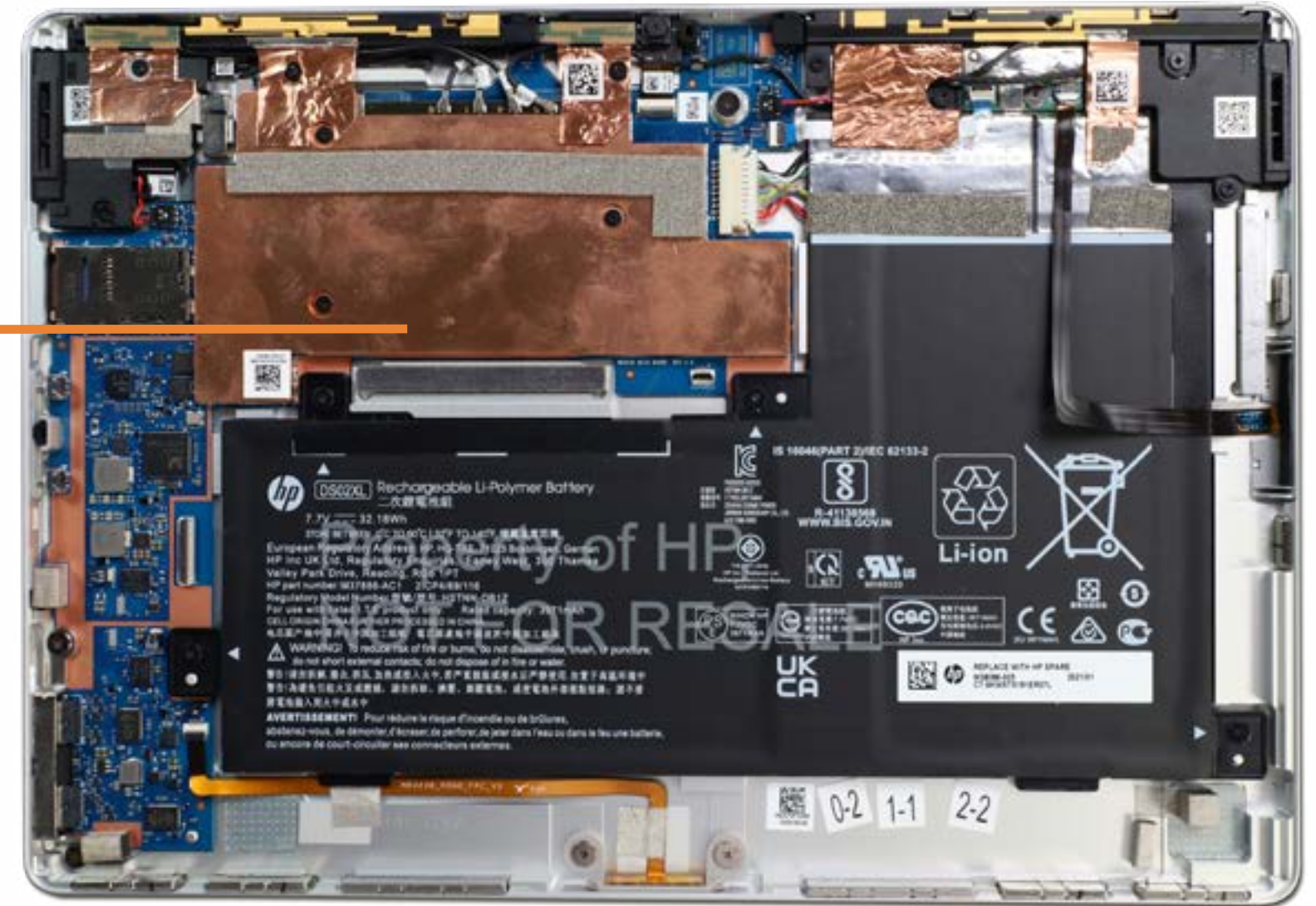
- Display Panel
- Battery
- Wireless LAN Antennas
- Wireless WAN Antennas
- Right Speaker
- Left Speaker
- Wireless Charging Module
- Pogo Pin Connector
- Front-Facing Webcam
- Transfer Board**
- Heat Sink
- Rear-Facing Webcam
- Fingerprint Reader/Power Button
- System Board (top)
- System Board (bottom)
- Display Panel Cable
- Touch Control Board Cable



[Go to External Views](#)

Heat Sink

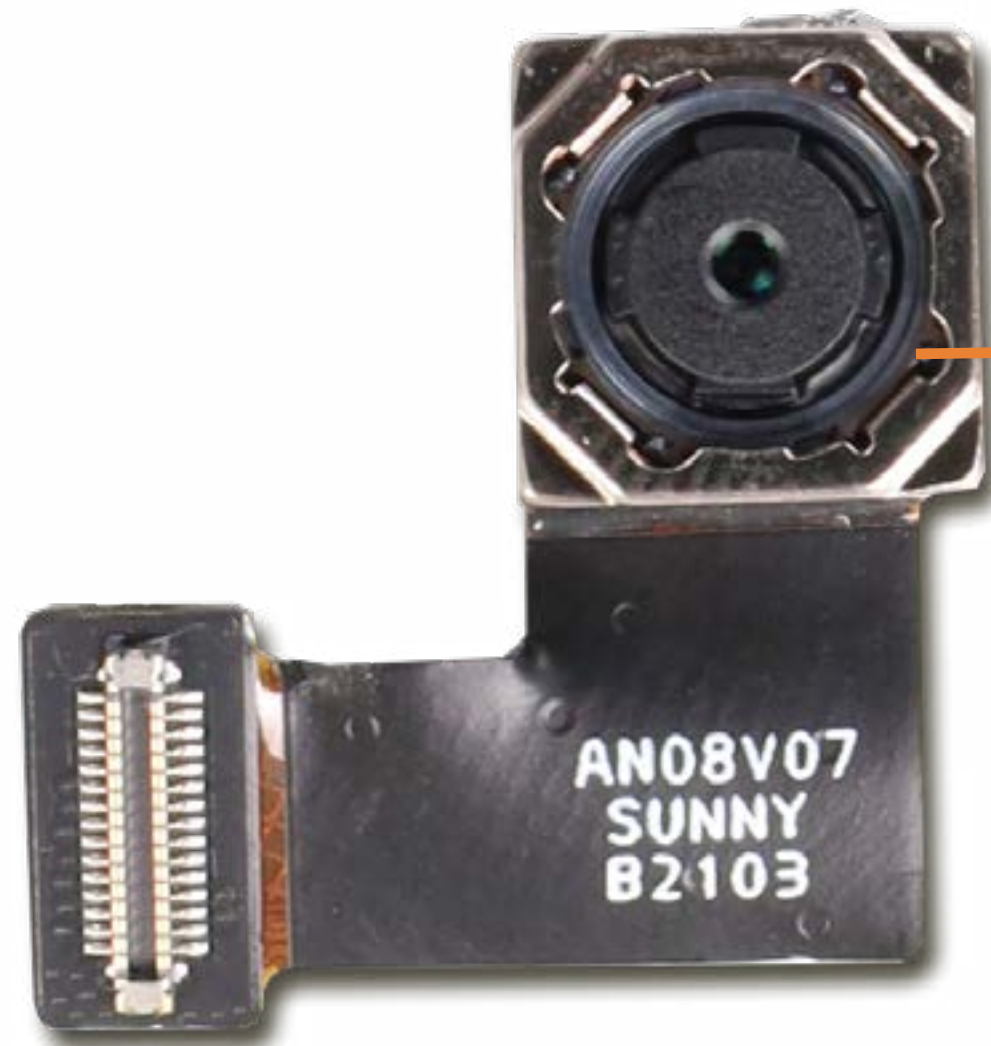
- Display Panel
- Battery
- Wireless LAN Antennas
- Wireless WAN Antennas
- Right Speaker
- Left Speaker
- Wireless Charging Module
- Pogo Pin Connector
- Front-Facing Webcam
- Transfer Board
- Heat Sink**
- Rear-Facing Webcam
- Fingerprint Reader/Power Button
- System Board (top)
- System Board (bottom)
- Display Panel Cable
- Touch Control Board Cable



[Go to External Views](#)

Rear-Facing Webcam

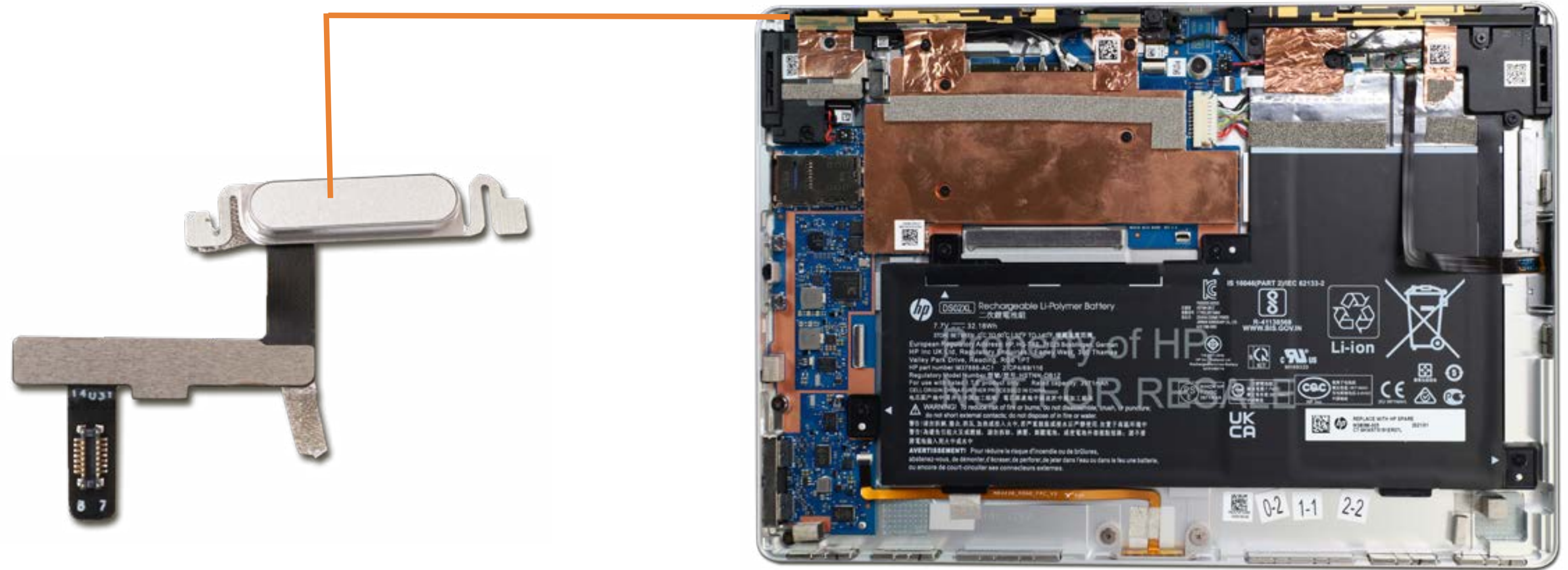
- Display Panel
- Battery
- Wireless LAN Antennas
- Wireless WAN Antennas
- Right Speaker
- Left Speaker
- Wireless Charging Module
- Pogo Pin Connector
- Front-Facing Webcam
- Transfer Board
- Heat Sink
- Rear-Facing Webcam**
- Fingerprint Reader/Power Button
- System Board (top)
- System Board (bottom)
- Display Panel Cable
- Touch Control Board Cable



[Go to External Views](#)

Fingerprint Reader/Power Button

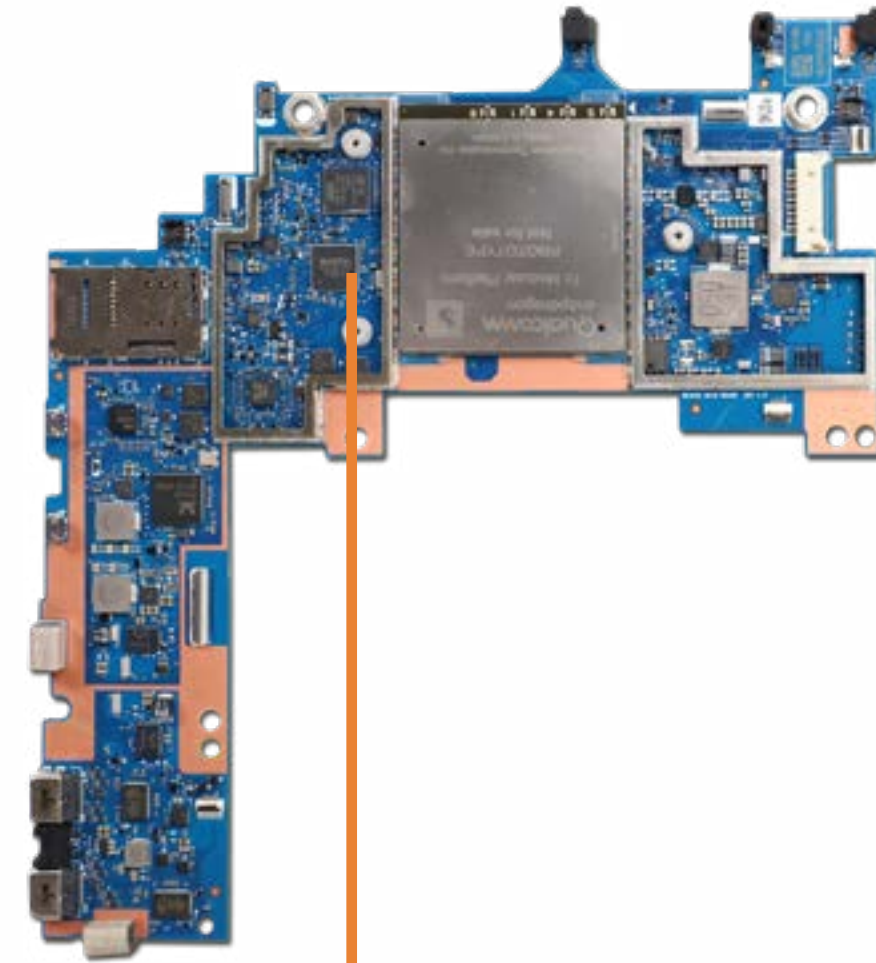
- Display Panel
- Battery
- Wireless LAN Antennas
- Wireless WAN Antennas
- Right Speaker
- Left Speaker
- Wireless Charging Module
- Pogo Pin Connector
- Front-Facing Webcam
- Transfer Board
- Heat Sink
- Rear-Facing Webcam
- Fingerprint Reader/Power Button**
- System Board (top)
- System Board (bottom)
- Display Panel Cable
- Touch Control Board Cable



[Go to External Views](#)

System Board (top)

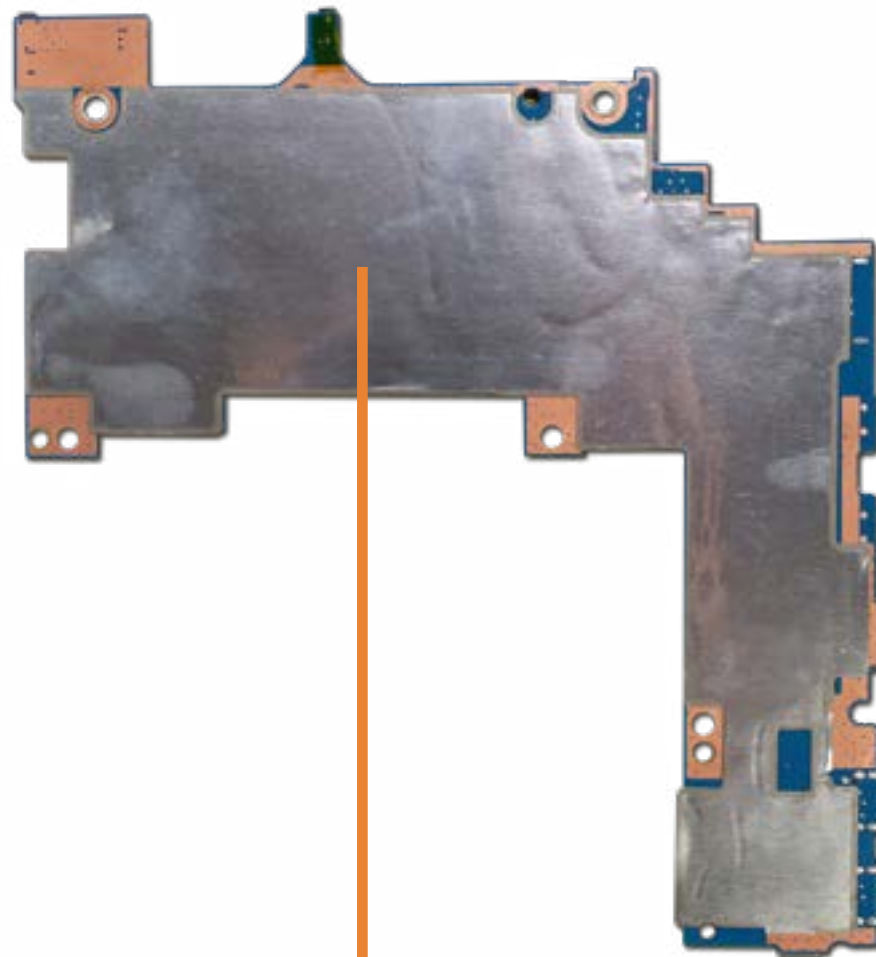
- Display Panel
- Battery
- Wireless LAN Antennas
- Wireless WAN Antennas
- Right Speaker
- Left Speaker
- Wireless Charging Module
- Pogo Pin Connector
- Front-Facing Webcam
- Transfer Board
- Heat Sink
- Rear-Facing Webcam
- Fingerprint Reader/Power Button
- System Board (top)**
- System Board (bottom)
- Display Panel Cable
- Touch Control Board Cable



[Go to External Views](#)

System Board (bottom)

- Display Panel
- Battery
- Wireless LAN Antennas
- Wireless WAN Antennas
- Right Speaker
- Left Speaker
- Wireless Charging Module
- Pogo Pin Connector
- Front-Facing Webcam
- Transfer Board
- Heat Sink
- Rear-Facing Webcam
- Fingerprint Reader/Power Button
- System Board (top)
- System Board (bottom)**
- Display Panel Cable
- Touch Control Board Cable



[Go to External Views](#)

Display Panel Cable

- Display Panel
- Battery
- Wireless LAN Antennas
- Wireless WAN Antennas
- Right Speaker
- Left Speaker
- Wireless Charging Module
- Pogo Pin Connector
- Front-Facing Webcam
- Transfer Board
- Heat Sink
- Rear-Facing Webcam
- Fingerprint Reader/Power Button
- System Board (top)
- System Board (bottom)
- Display Panel Cable**
- Touch Control Board Cable



[Go to External Views](#)

Touch Control Board Cable

- Display Panel
- Battery
- Wireless LAN Antennas
- Wireless WAN Antennas
- Right Speaker
- Left Speaker
- Wireless Charging Module
- Pogo Pin Connector
- Front-Facing Webcam
- Transfer Board
- Heat Sink
- Rear-Facing Webcam
- Fingerprint Reader/Power Button
- System Board (top)
- System Board (bottom)
- Display Panel Cable
- Touch Control Board Cable**



[Go to External Views](#)