

# Interactive Part Locator

## HP ENVY 34in AiO Desktop PC

Welcome to the interactive part locator for the  
HP ENVY 34in AiO Desktop PC

### Here's how to use it...

[External Views](#) (Click the link to navigate to the views)

On this page you will find large icons of each of the external views of this product. To view a specific view in greater detail, simply click that view.

[Parts List](#) (Click the link to navigate to the parts)

On this page, you will find a list of all of the replaceable parts for this product. To view a specific part and its location in the product, click the part name in the list.

**That's it! On every page there is a link that brings you back to either the External Views or the Parts List, enabling you to navigate to whatever view or part you wish to review.**

# External Views

Front

Left

Right

Rear

Internal

# Parts List

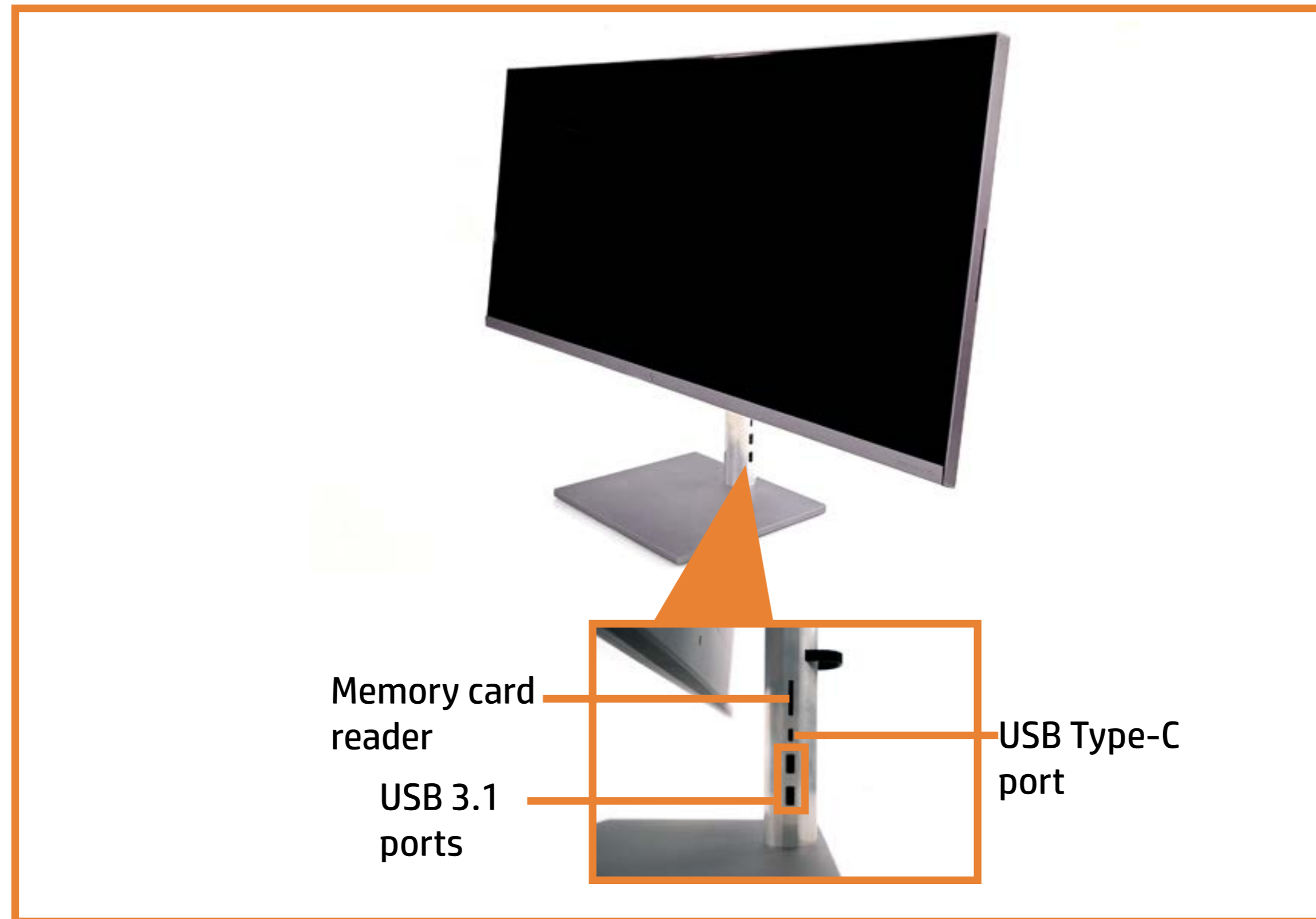
# Front View



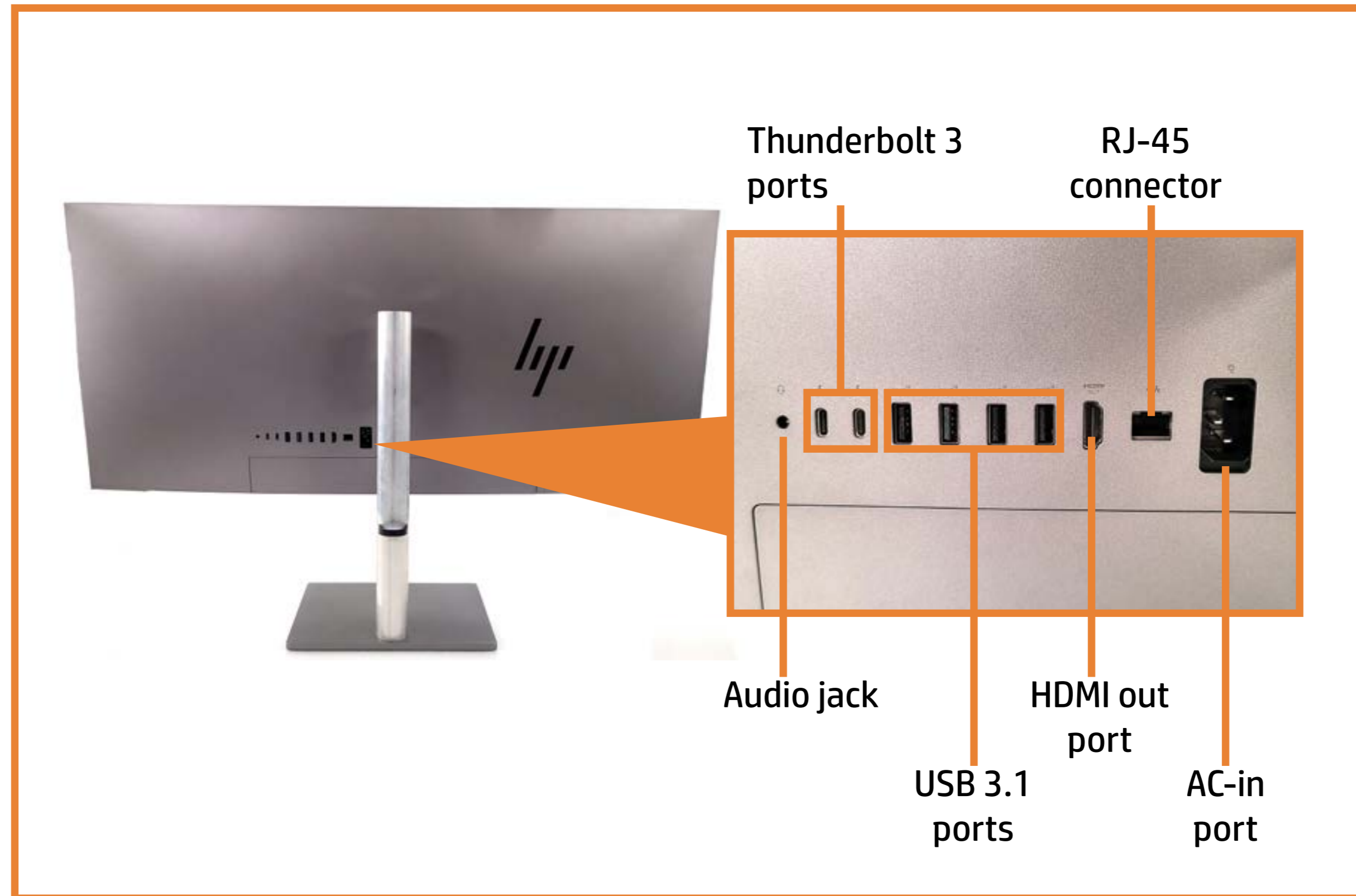
# Left View



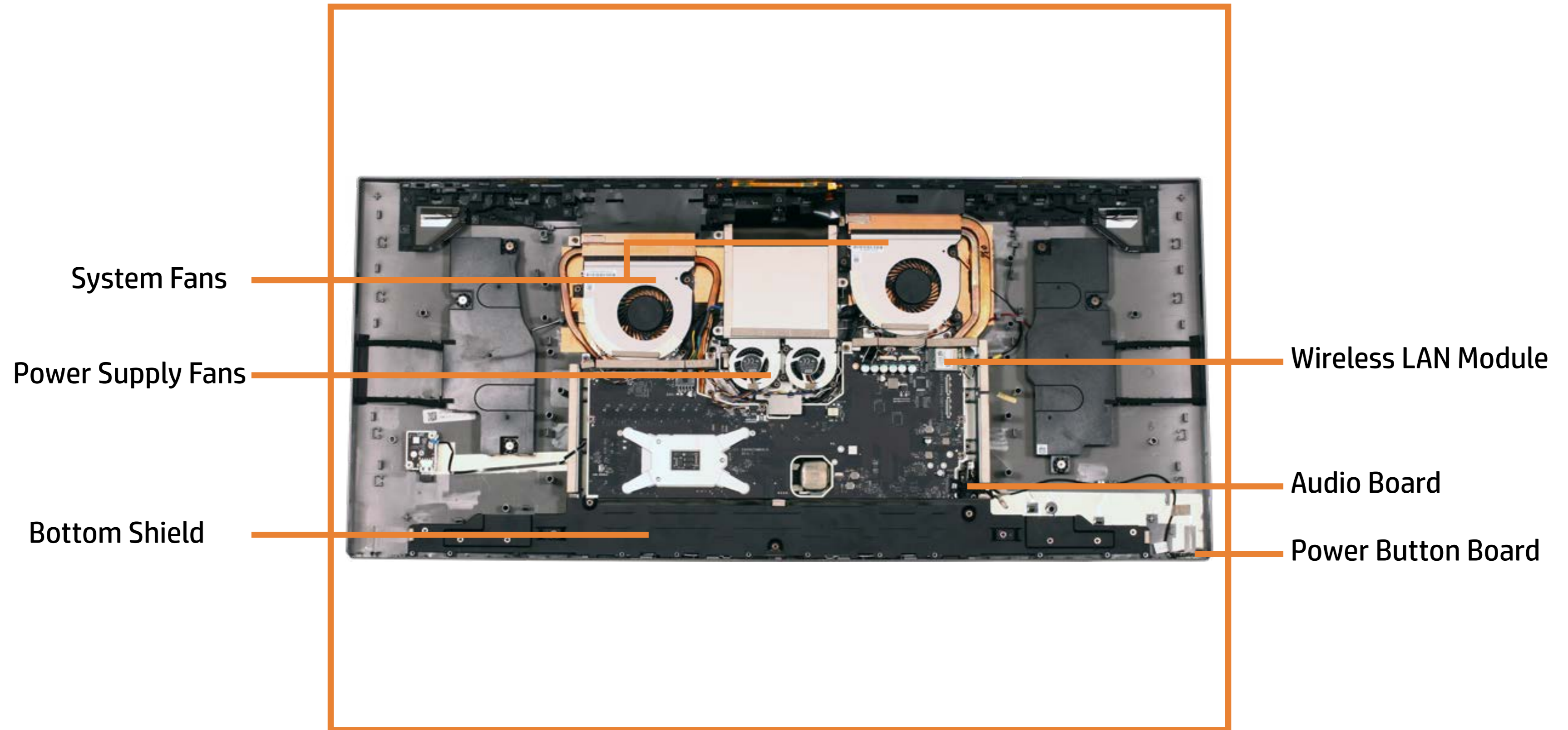
# Right View



# Rear View

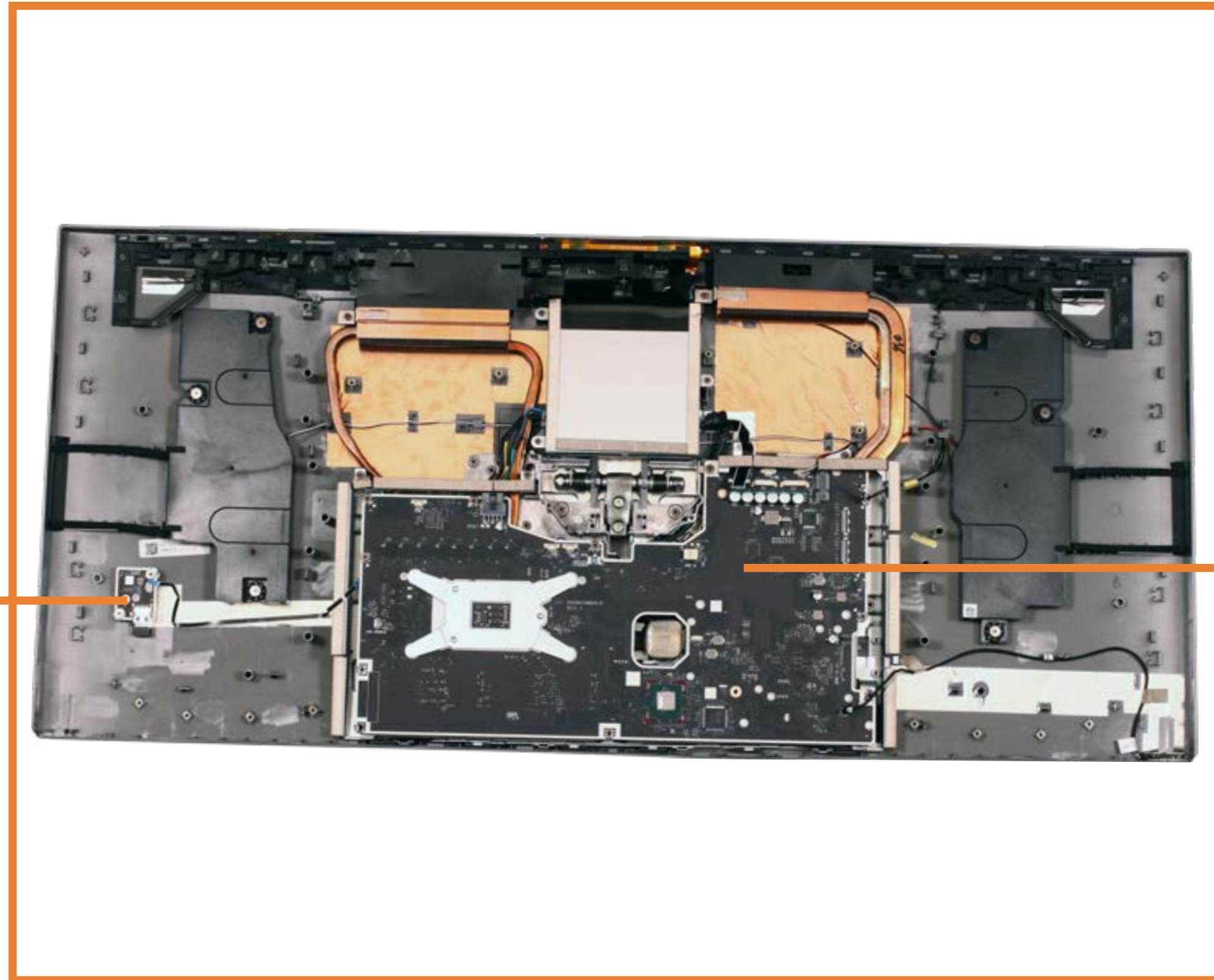


# Internal View 1





# Internal View 2



USB Dongle Board

Motherboard

# Service Door



Service Door

# Memory Module(s)







# Chin Cover

Chin Cover

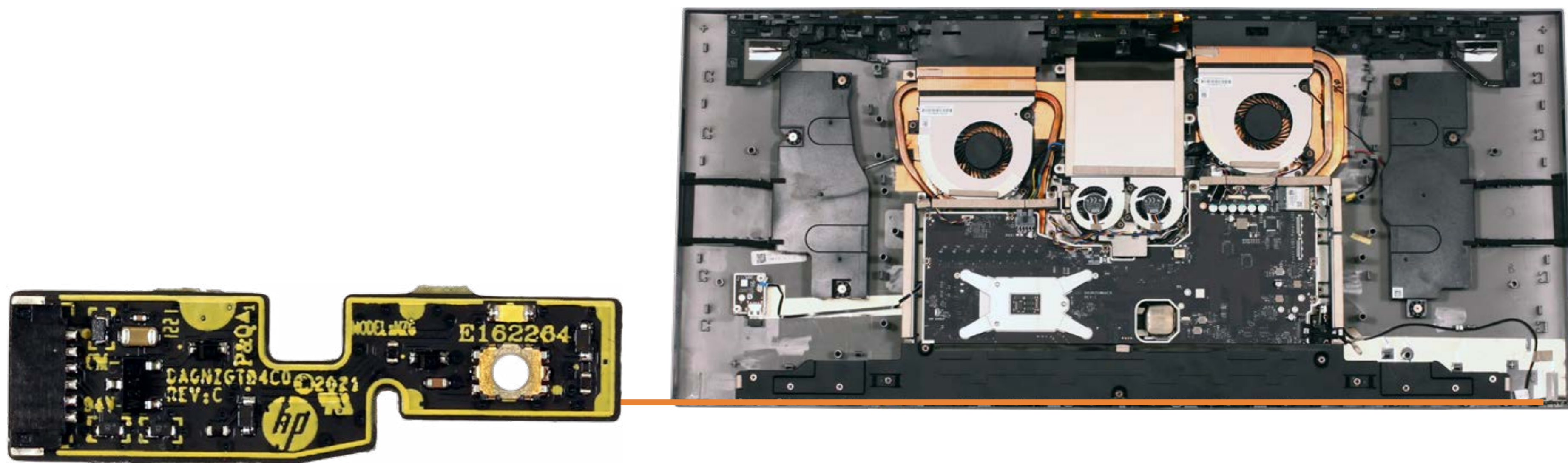


# Display Panel

Display Panel

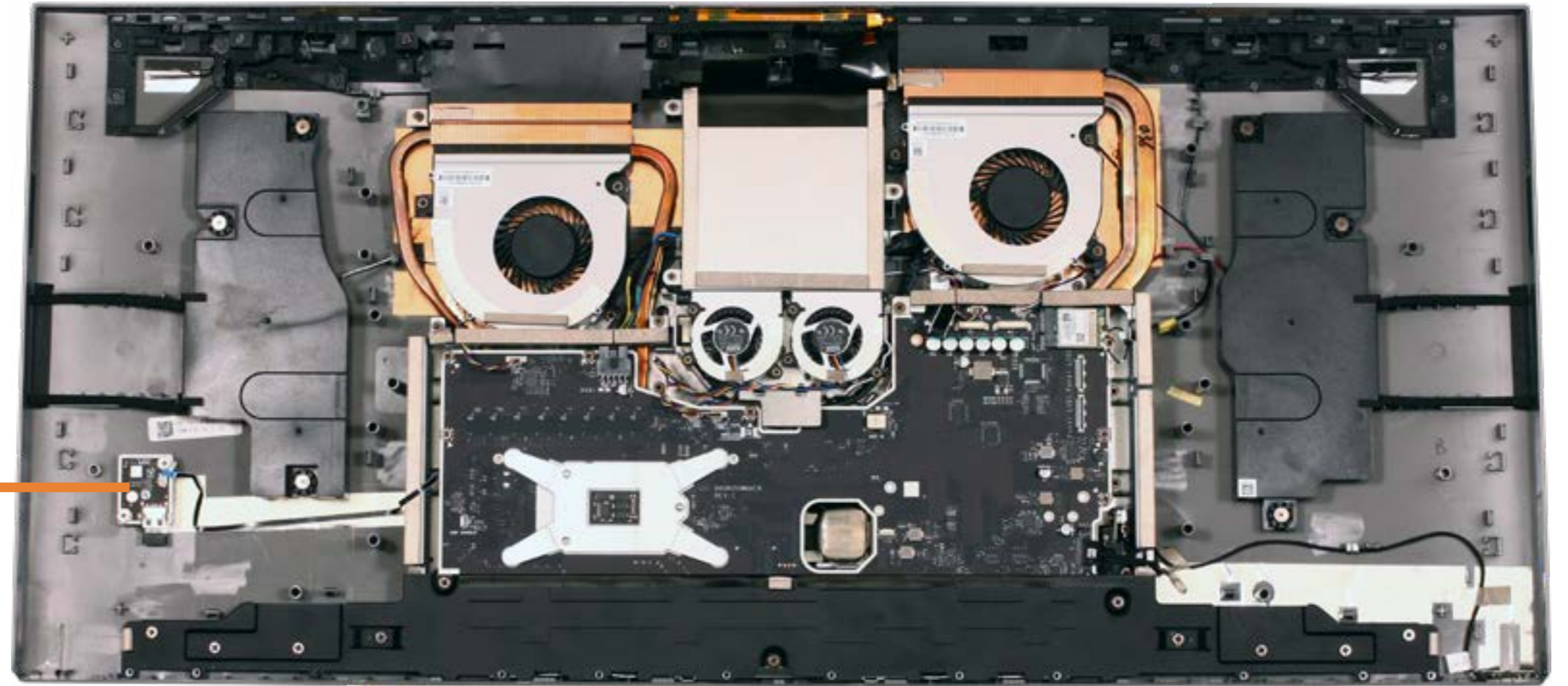
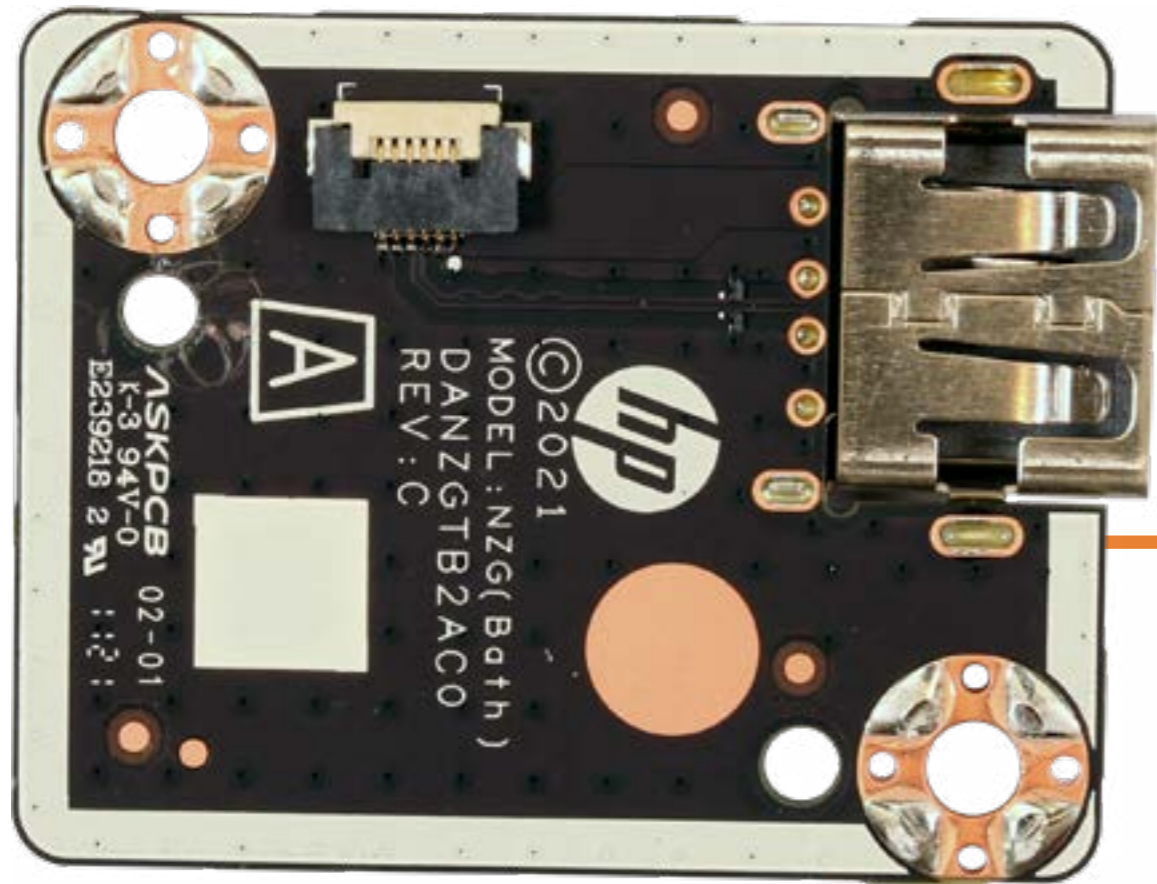


# Power Button Board



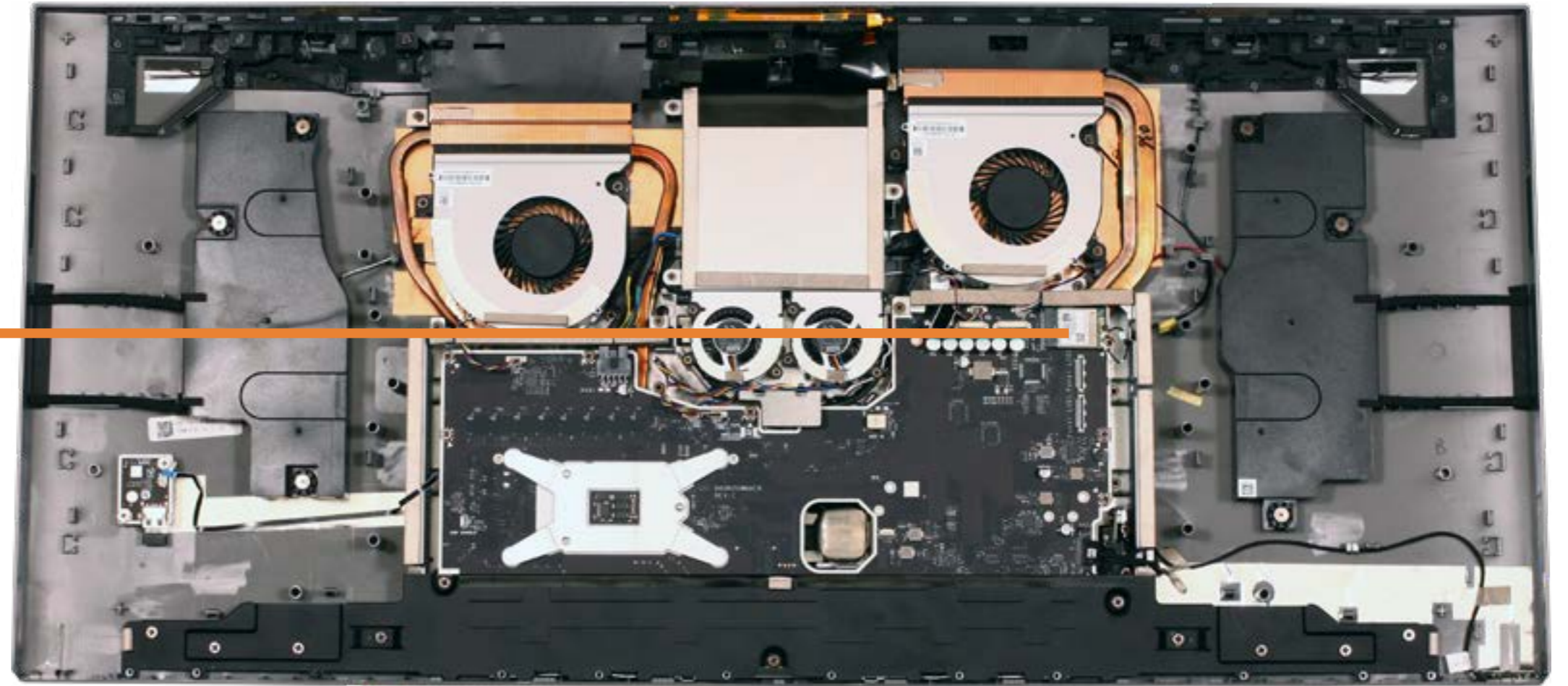


# USB Dongle Board



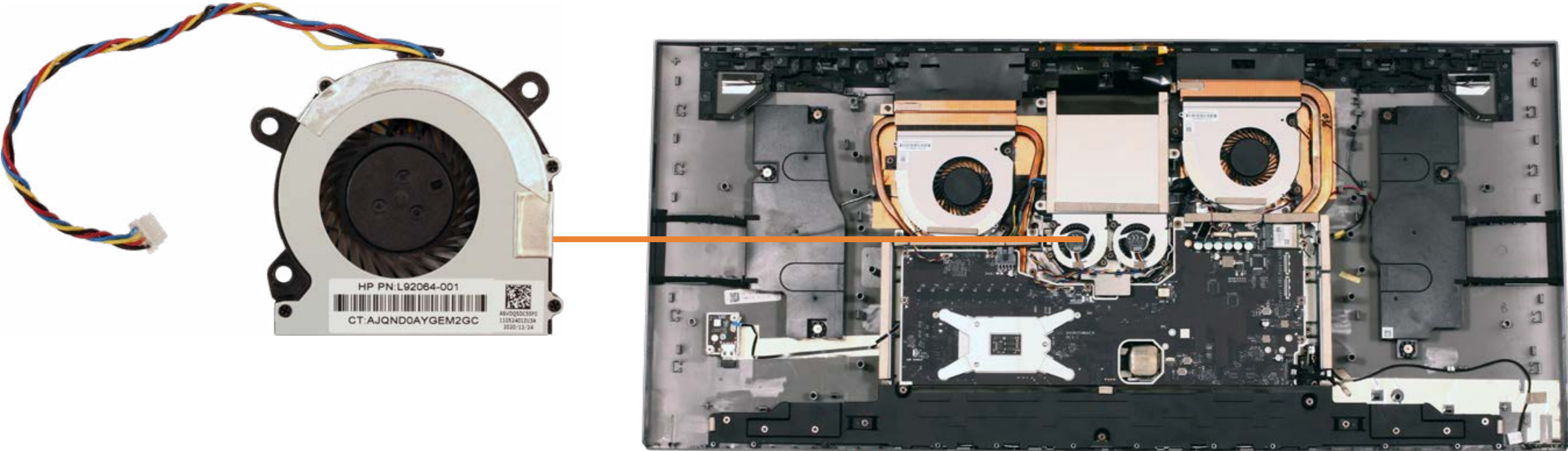


# Wireless LAN Module



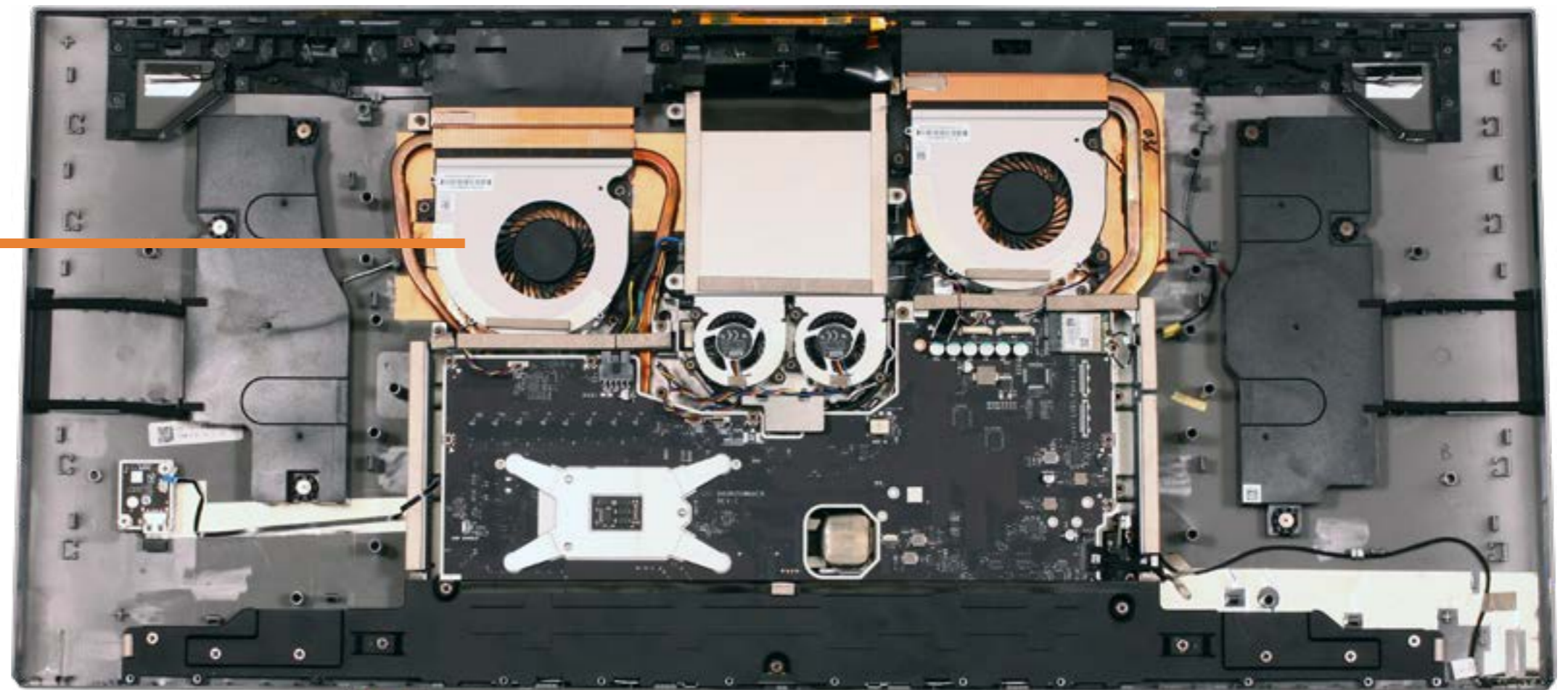


# Power Supply Fans

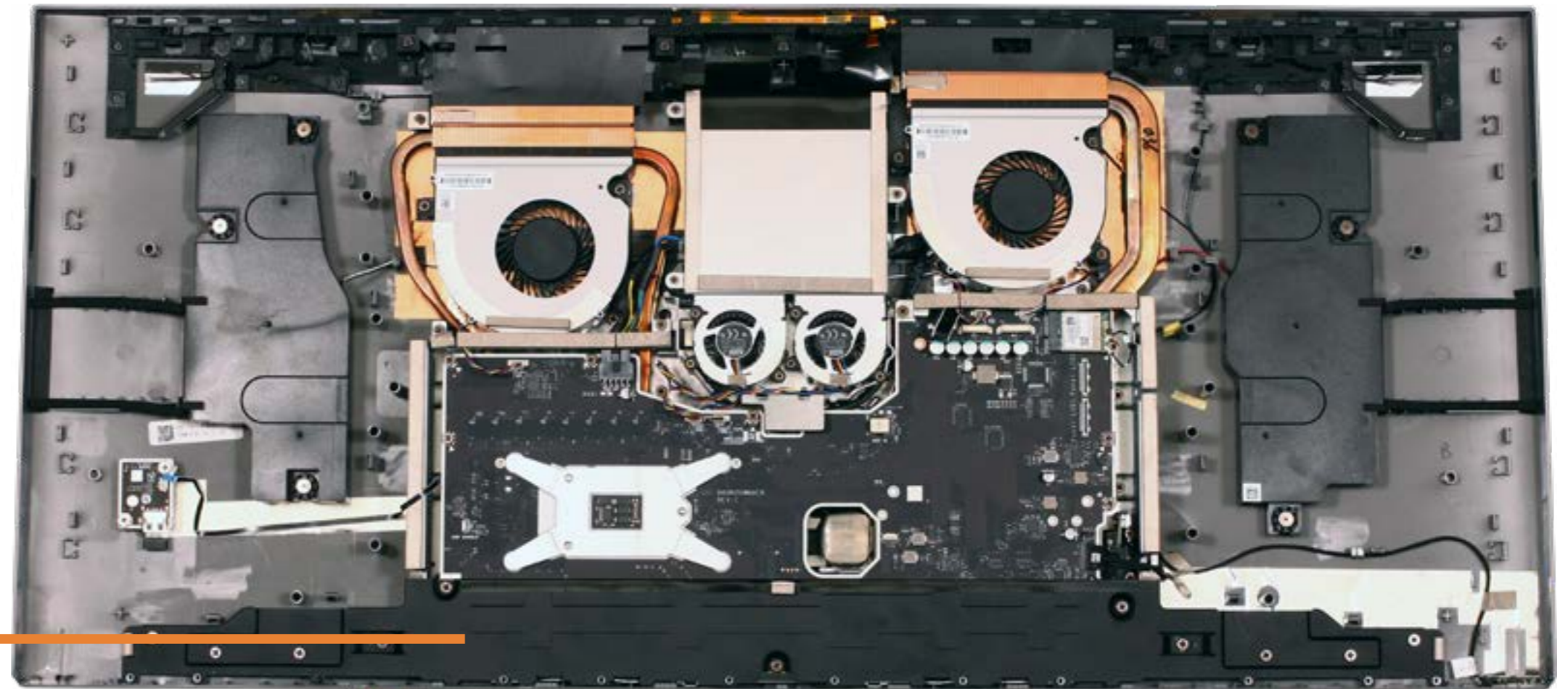




# System Fans



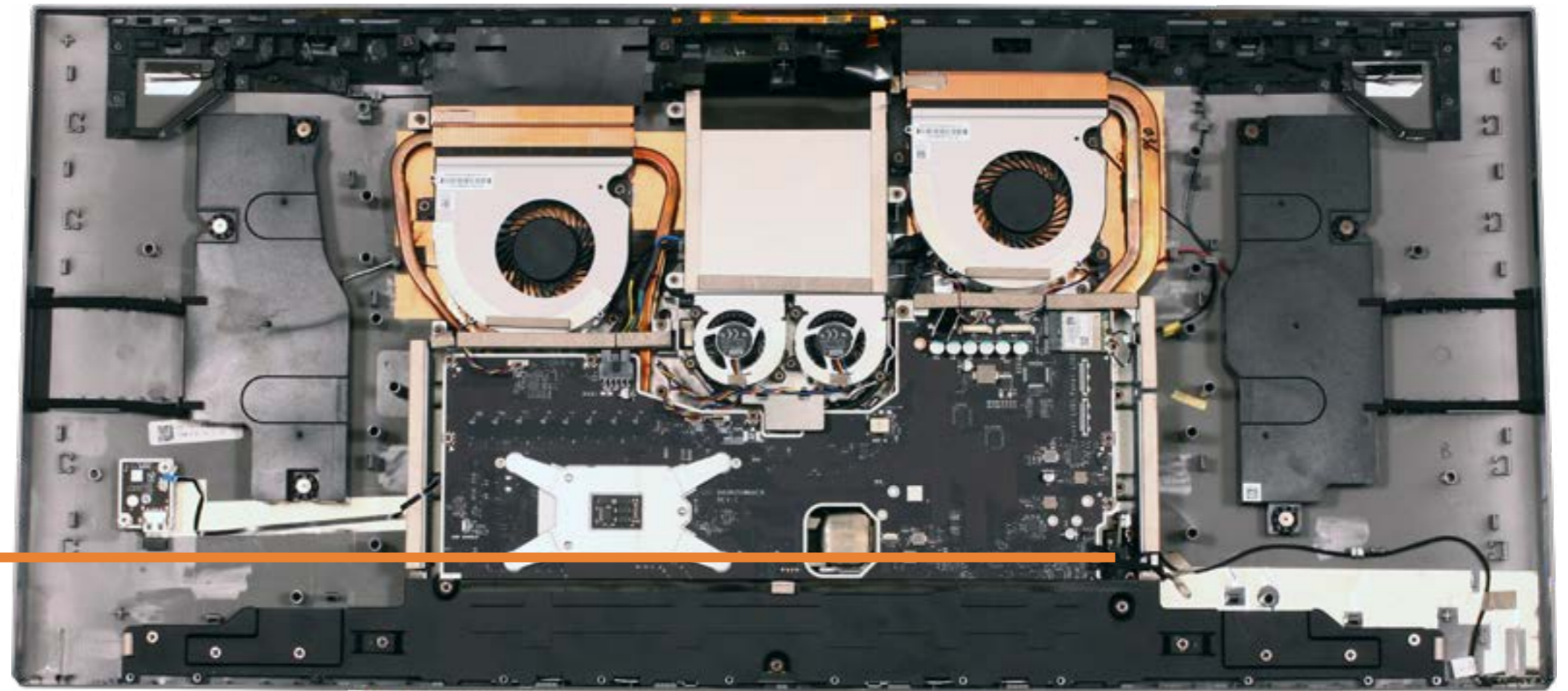
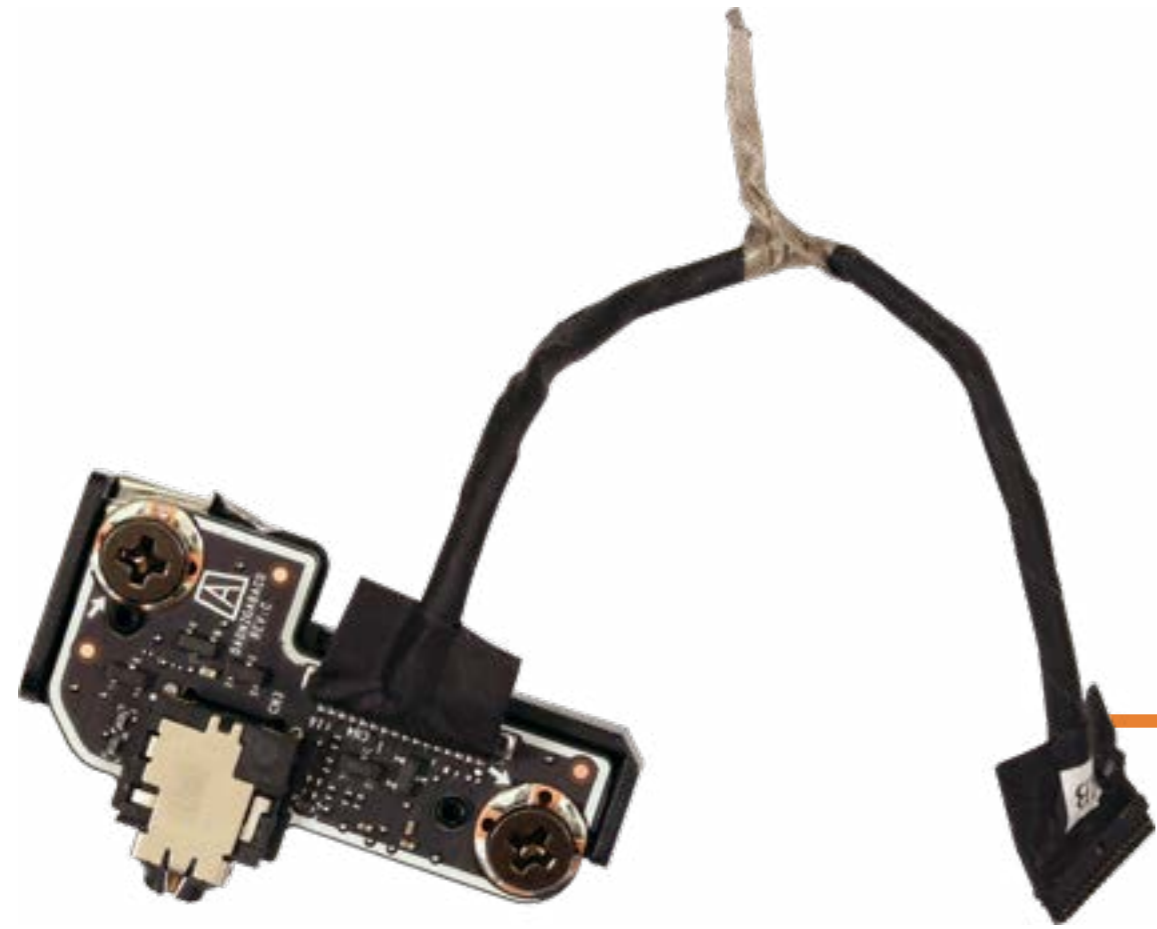
# Bottom Shield



Bottom Shield

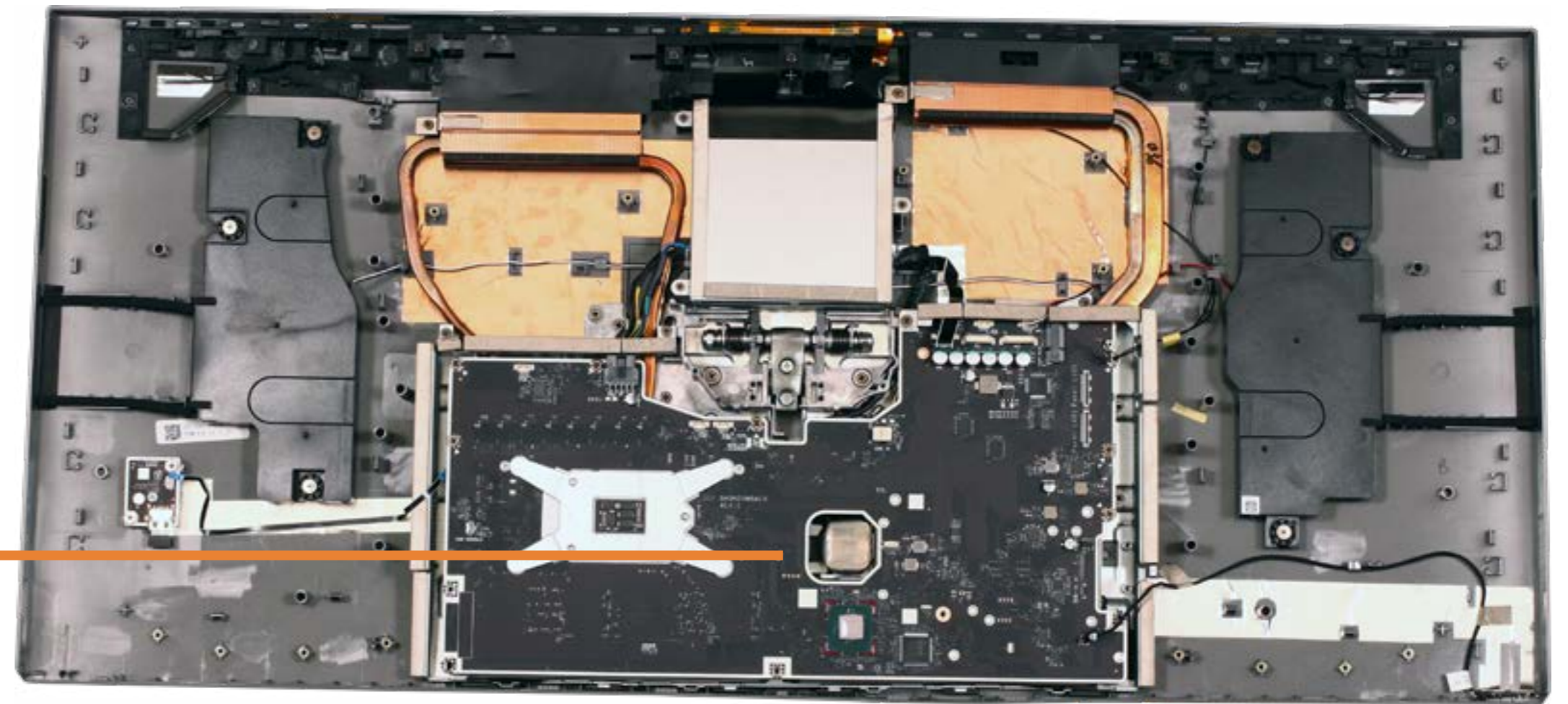
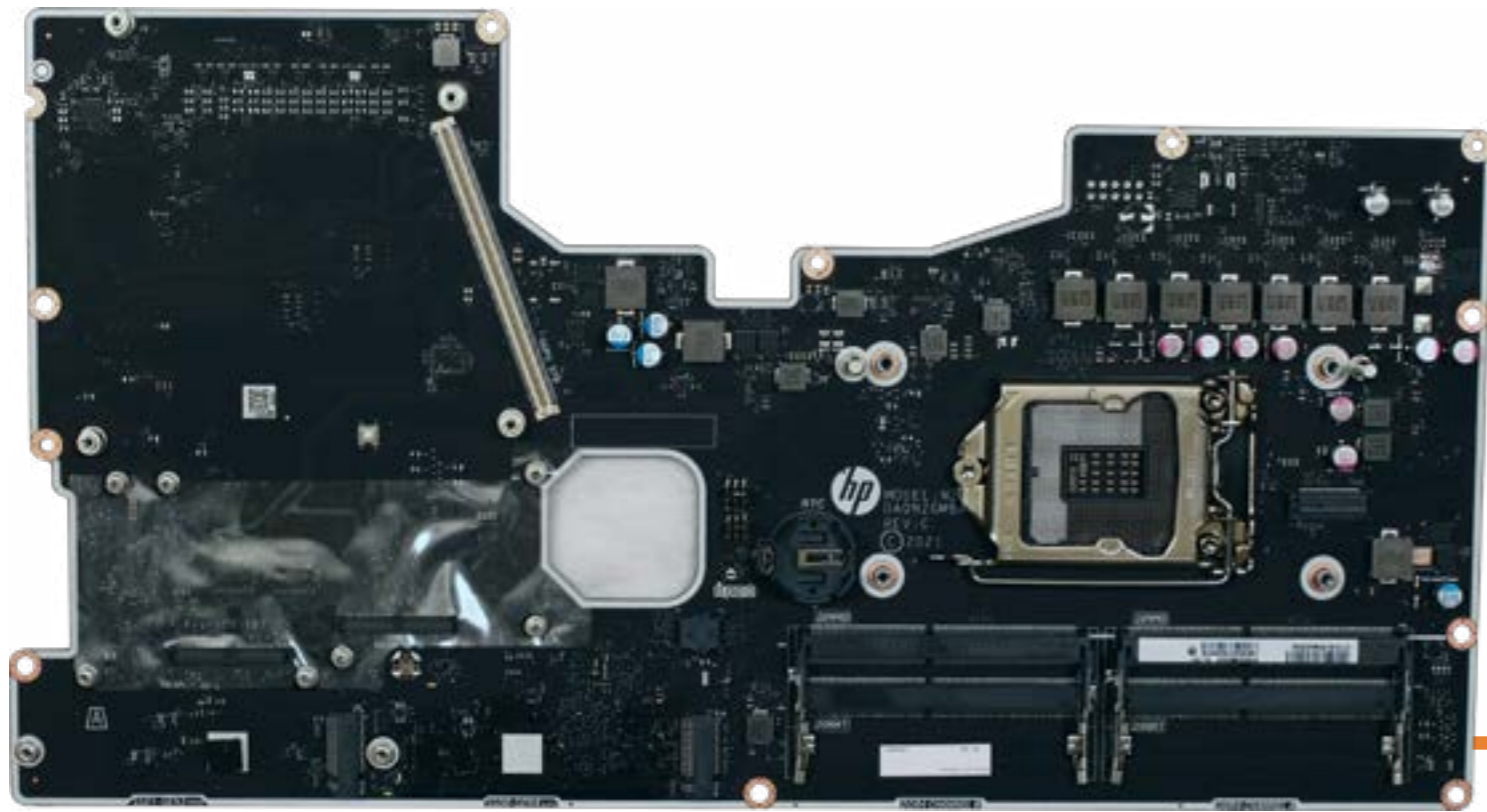


# Audio Board



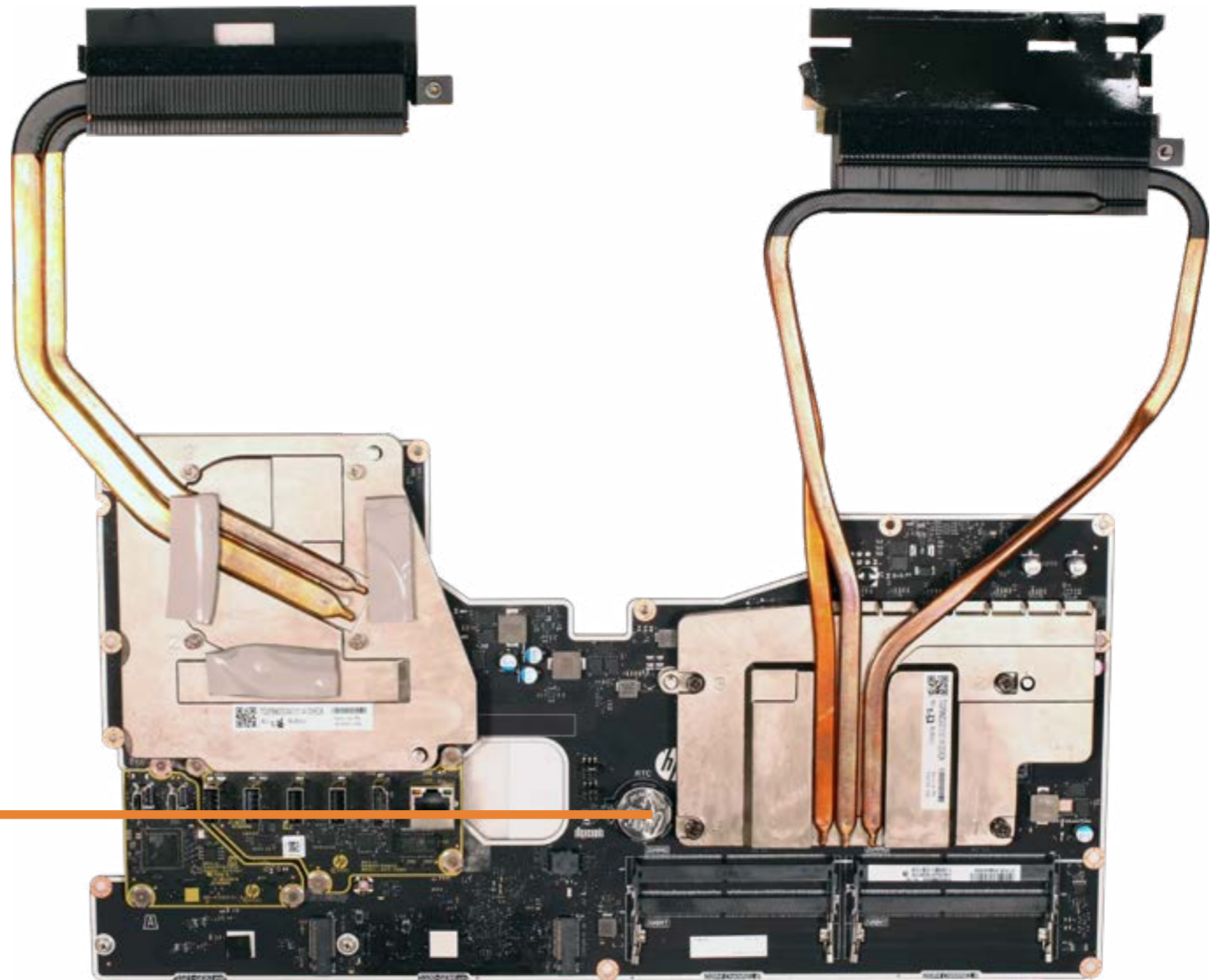


# Motherboard



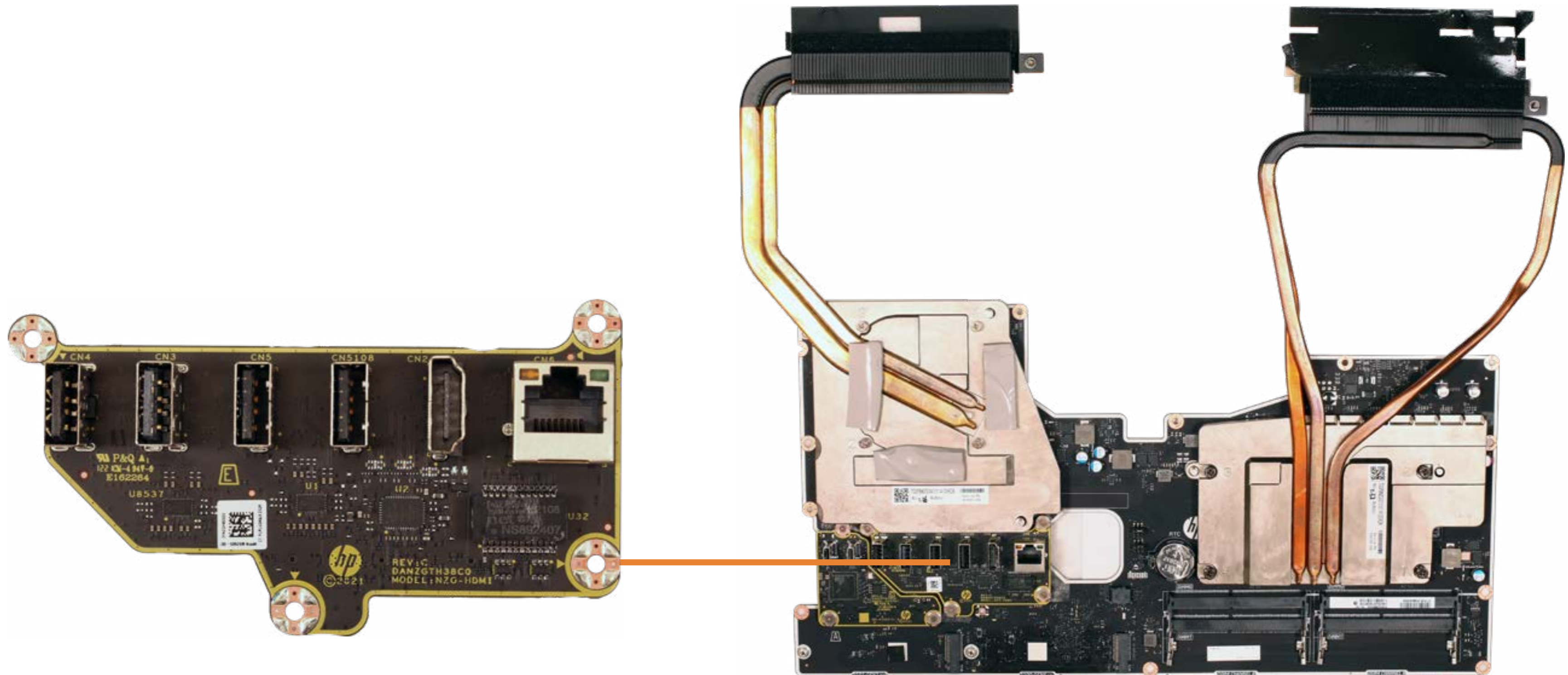


# CMOS Battery



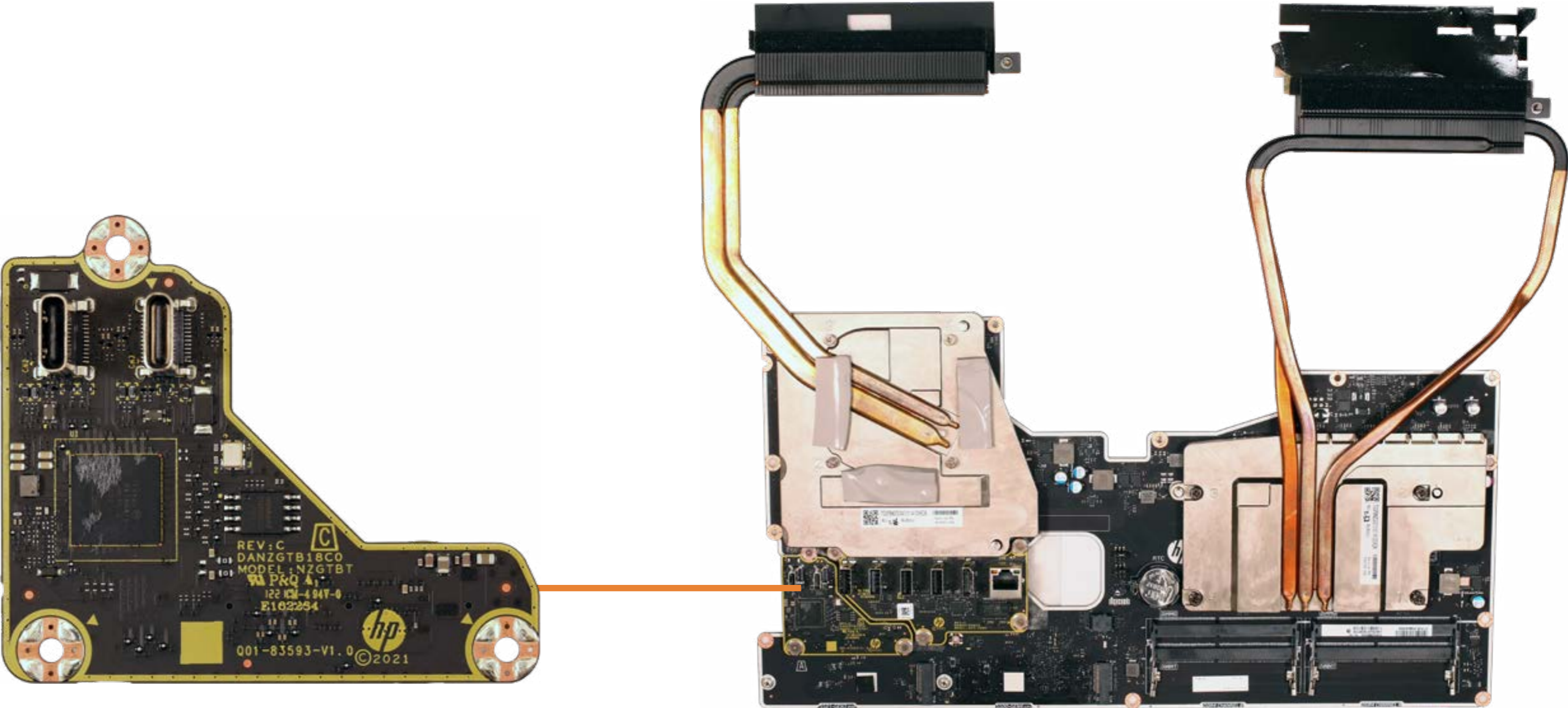


# Rear I/O Board

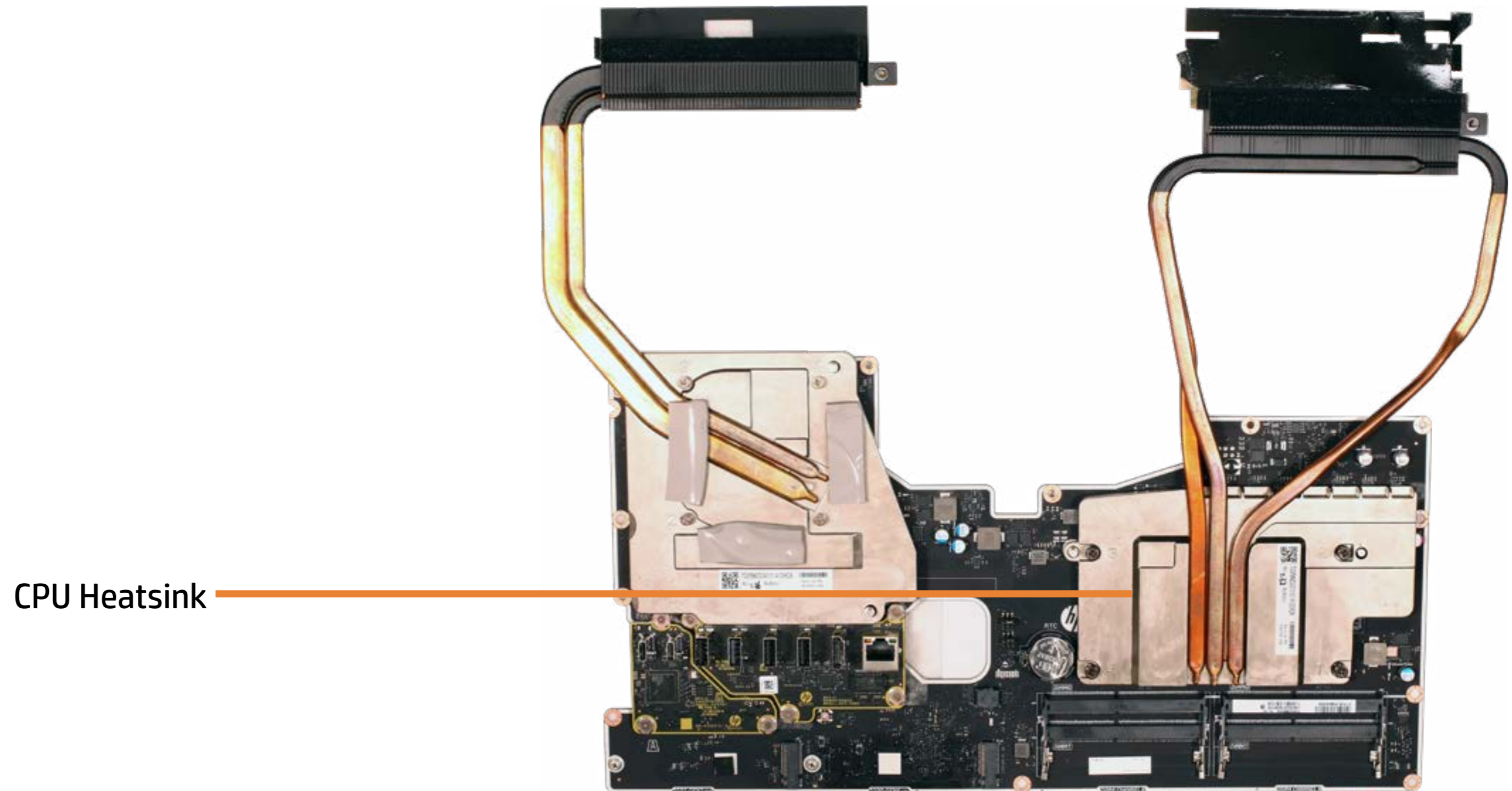




# Thunderbolt Board

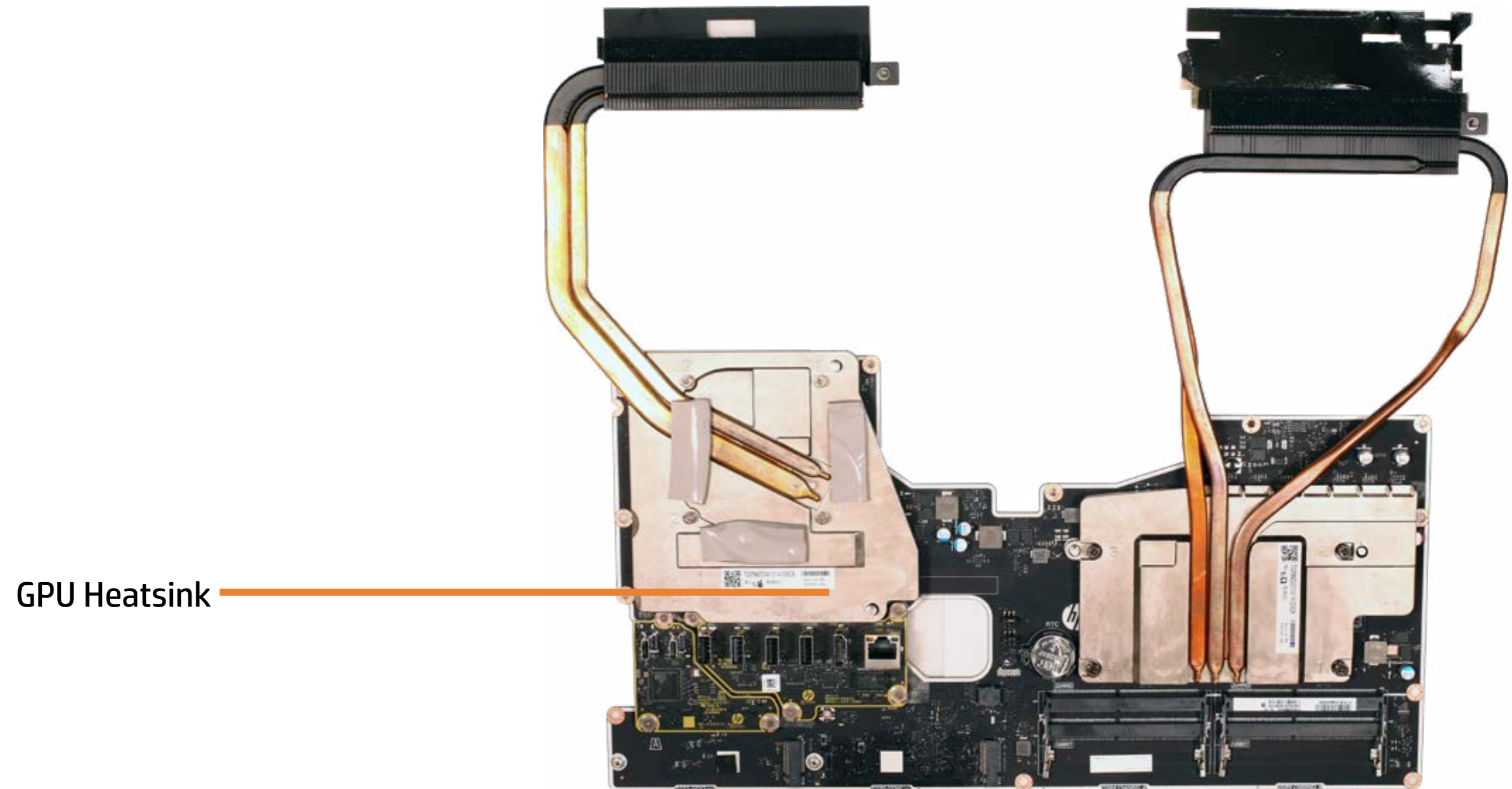


# CPU Heatsink



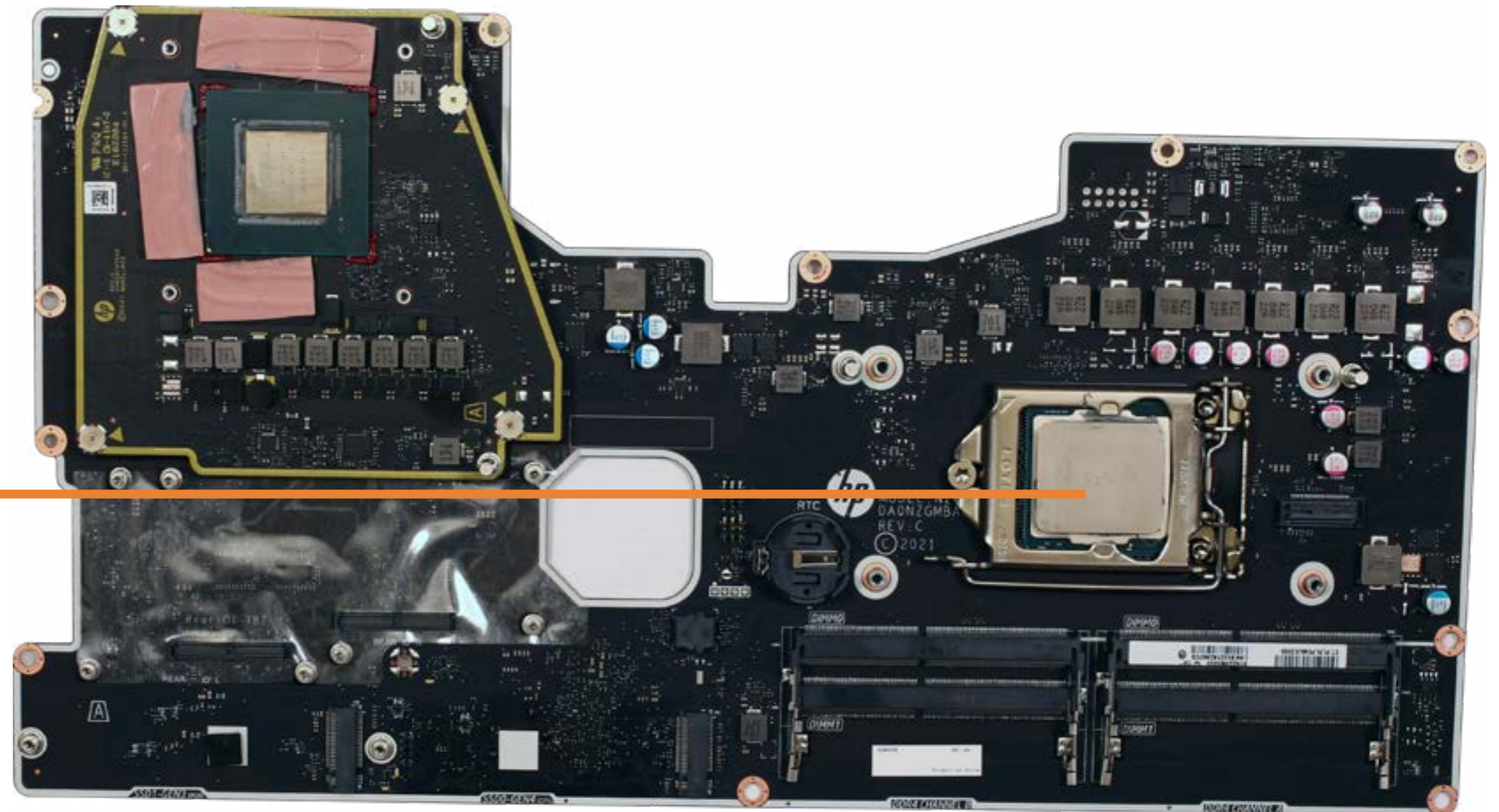


# GPU Heatsink



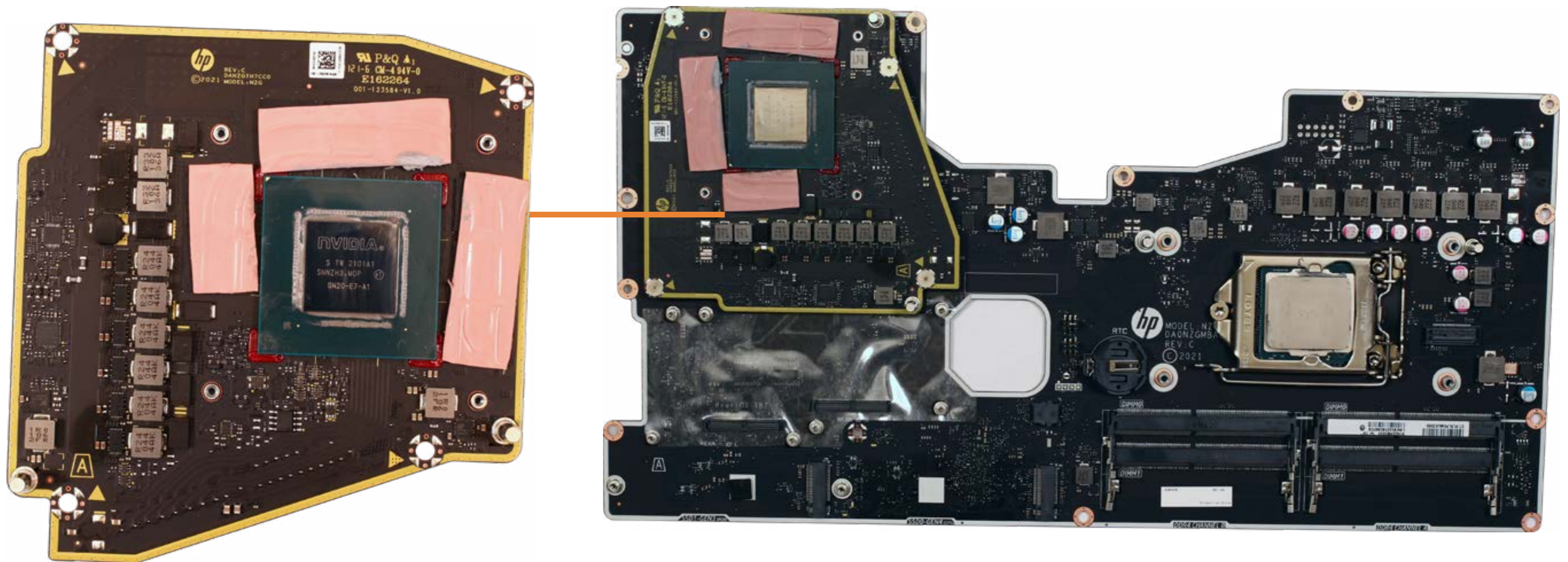


# CPU



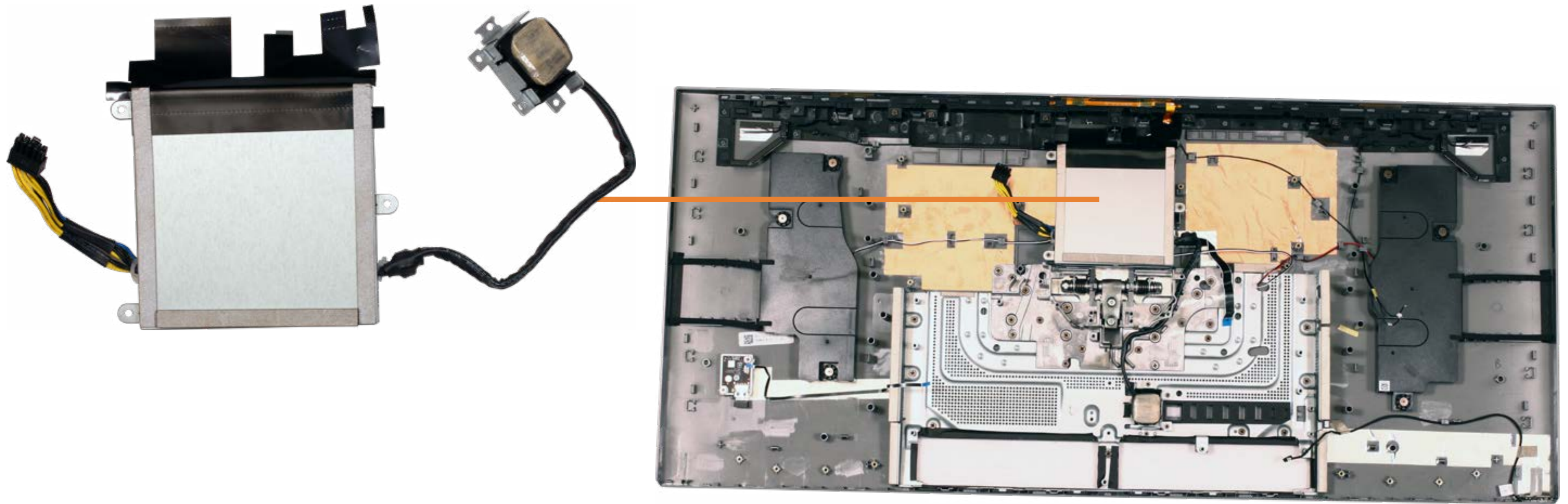


# GPU Board



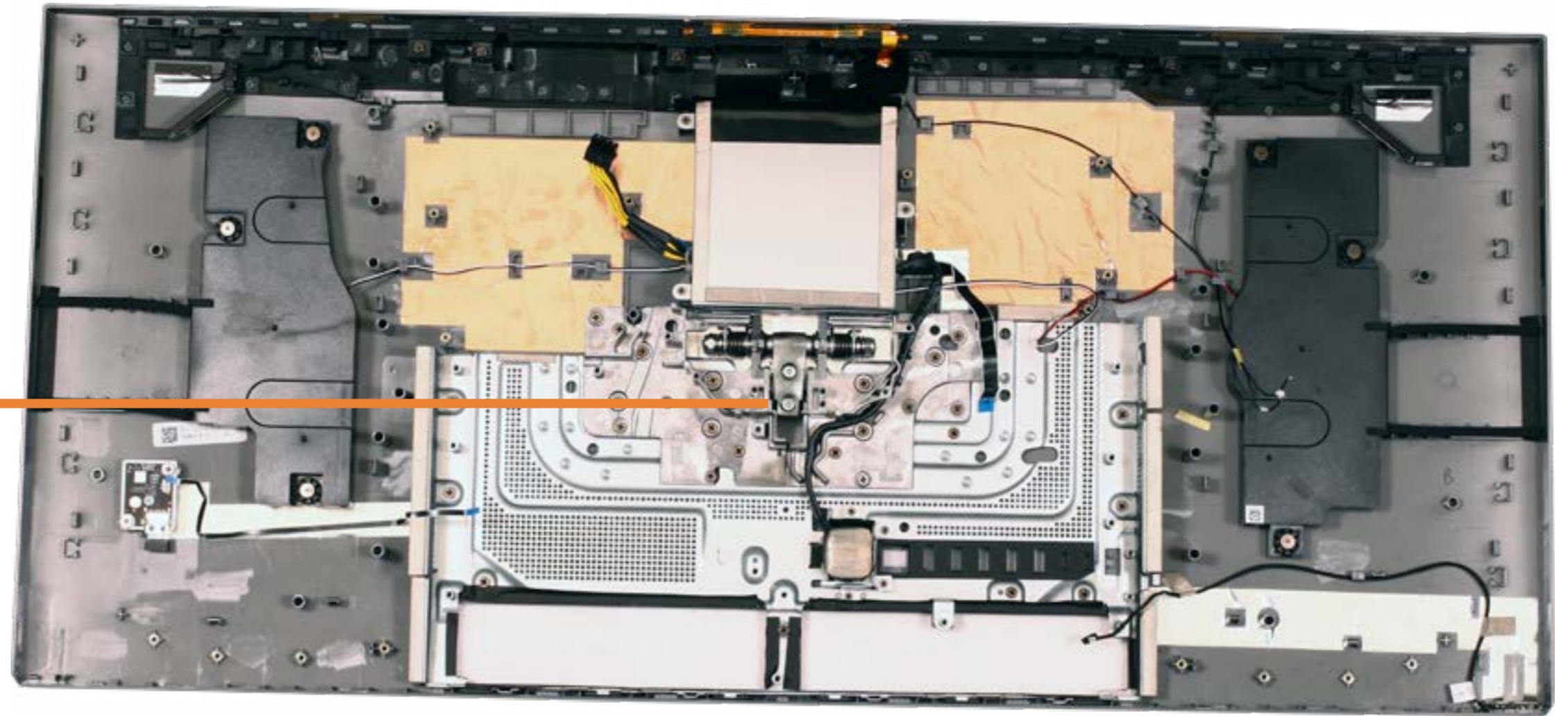
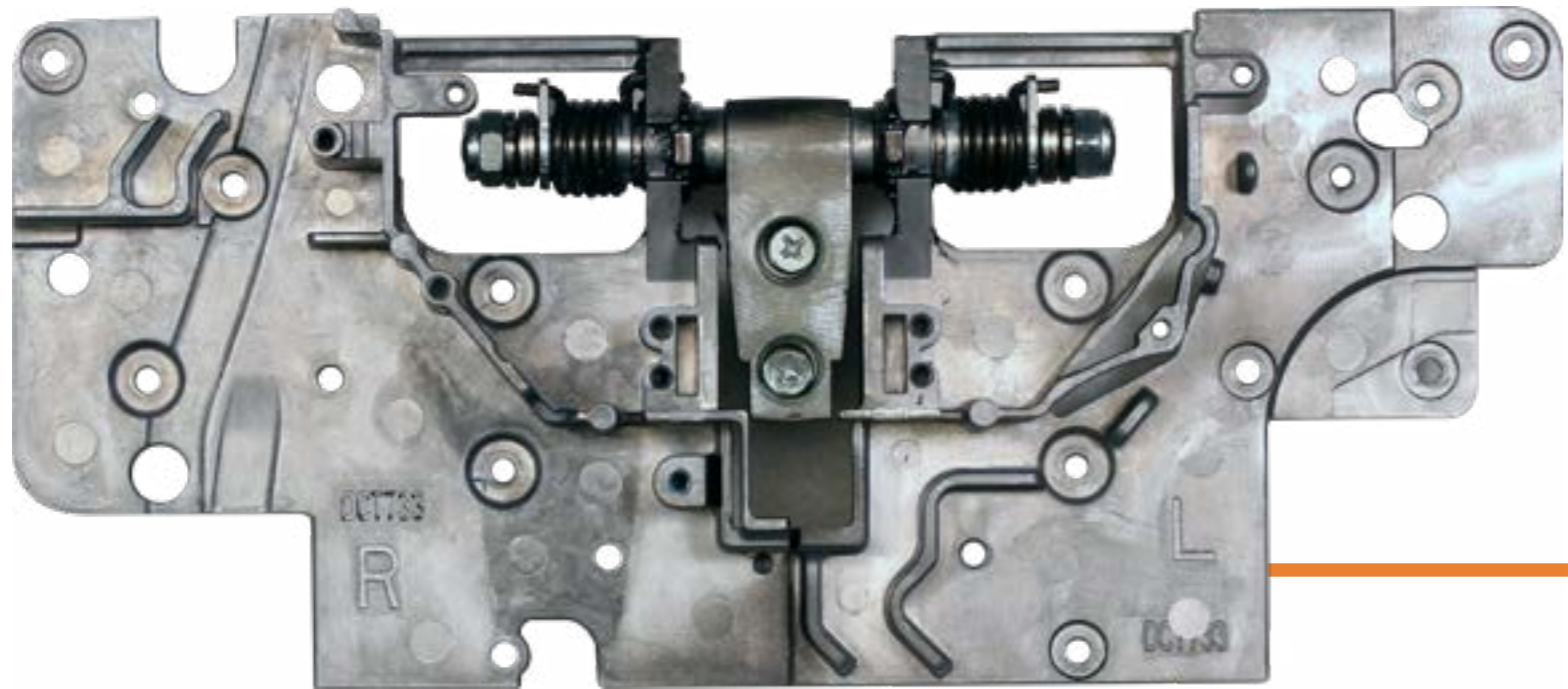


# Power Supply





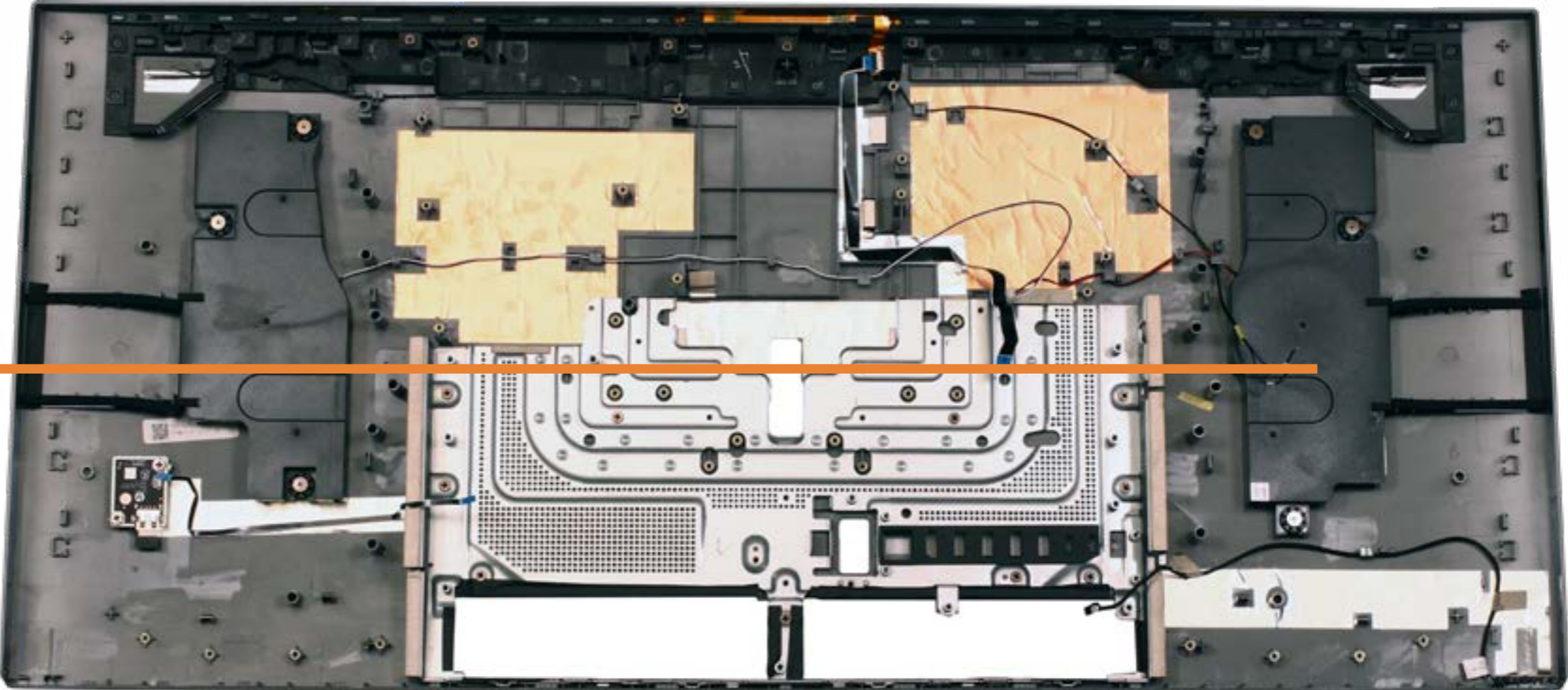
# Hinge Assembly





# Speakers

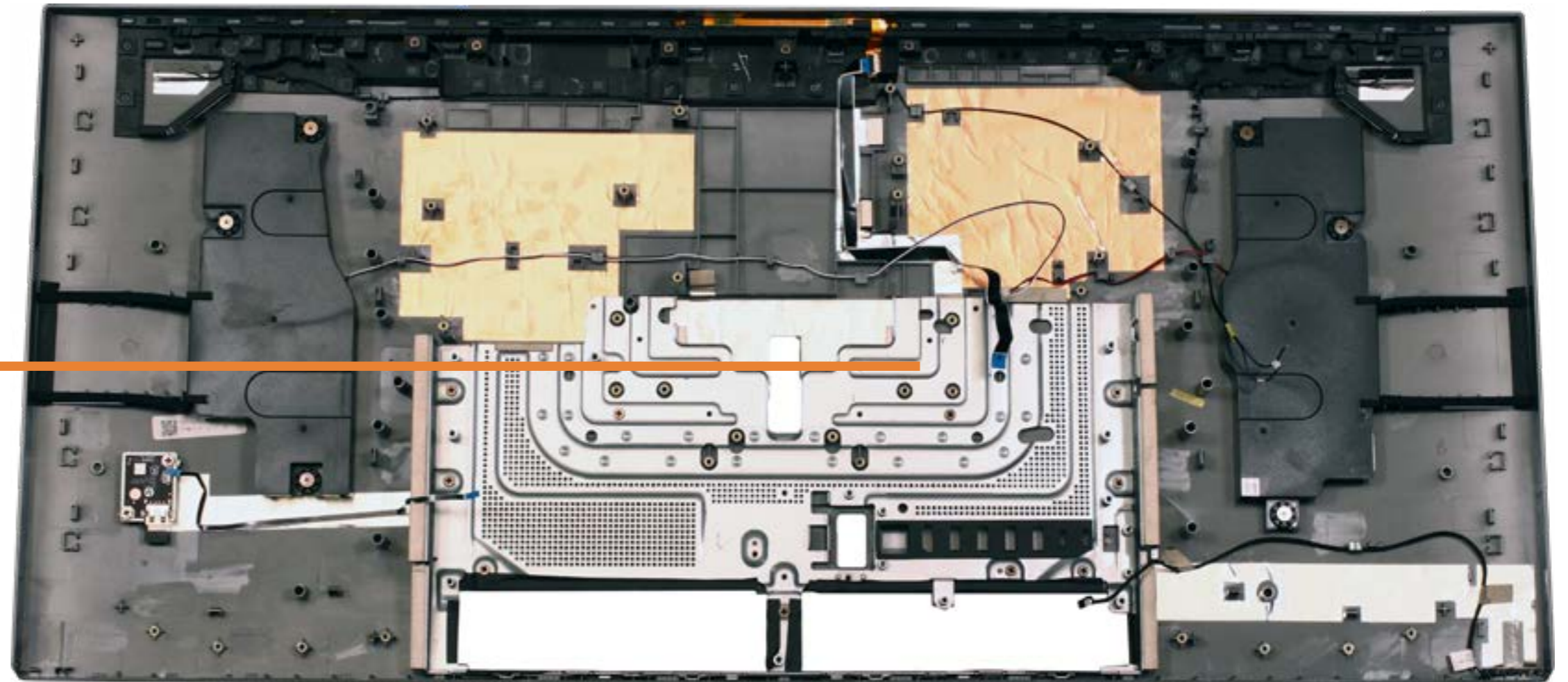
Speakers





# Motherboard Shield

Motherboard Shield



# Middle Frame

Middle Frame

