

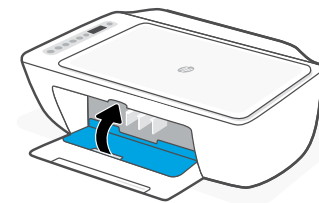
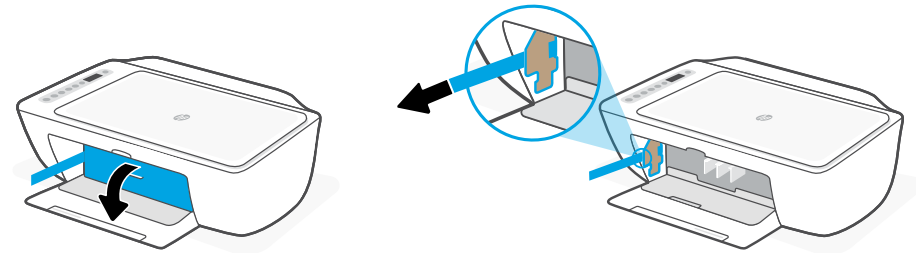
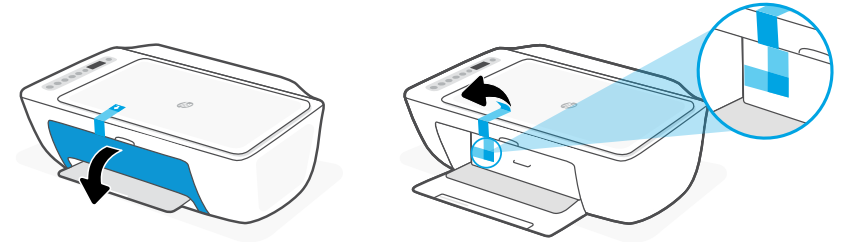
1



Get help with setup

Find setup information and videos online.

hp.com/support/printer-setup



Remove and discard all packaging, tape, and cardboard. Close the ink access door.

© Copyright 2021 HP Development Company, L.P.

Printed in China



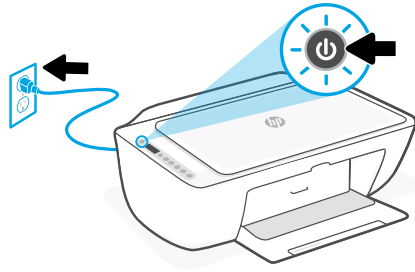
25R63-90010

The Apple logo is a trademark of Apple Inc., registered in the U.S. and other countries.
App Store is a service mark of Apple Inc.

Android, Google Play, and the Google Play logo are trademarks of Google Inc.



2

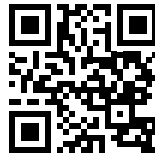
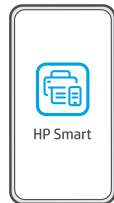


Plug in and turn on the printer.

3

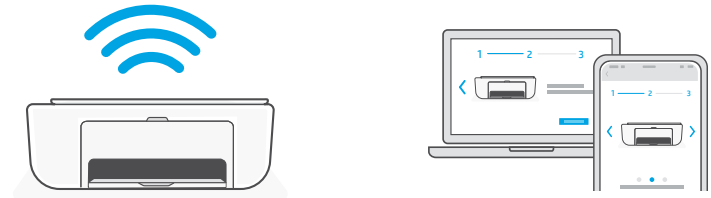


123.hp.com



Install the **required** HP Smart software from **123.hp.com** or your app store on a computer or mobile device.

4



Follow instructions in HP Smart to connect the printer to a network and finish setup.



If connecting the printer to Wi-Fi, your computer or mobile device must be near the printer during setup. See **Reference Guide** for Wi-Fi troubleshooting and tips.