

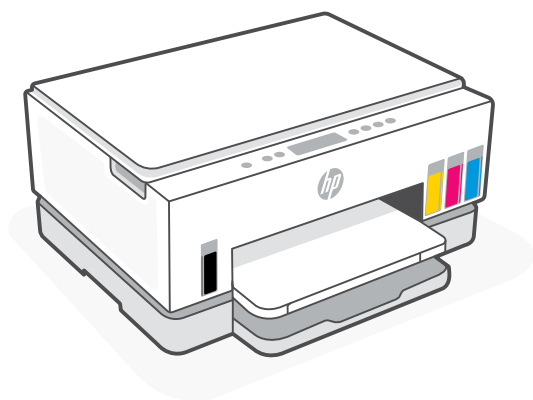


Setup and Reference Guide

ZHCN

设置和参考指南

12



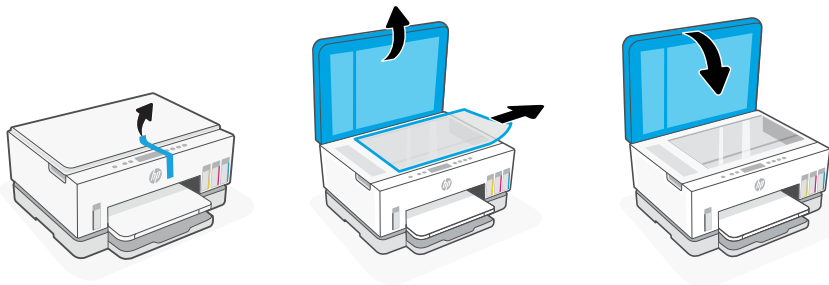
HP Smart Tank

660-670 series

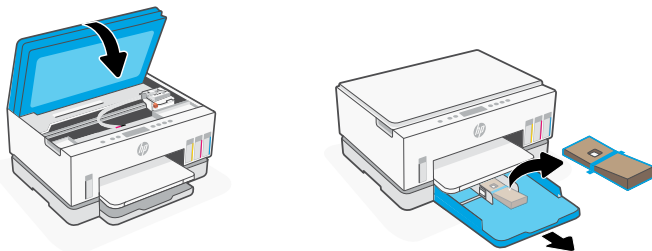
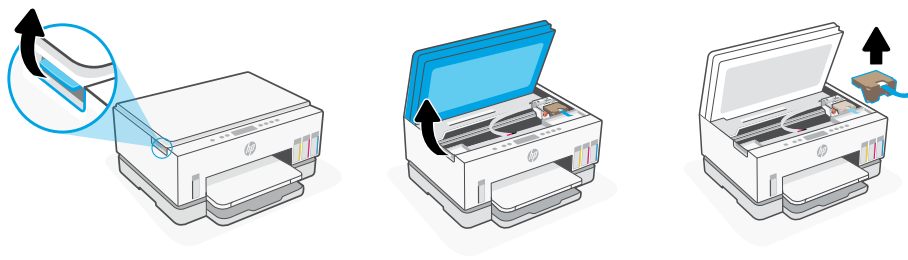


Prepare printer

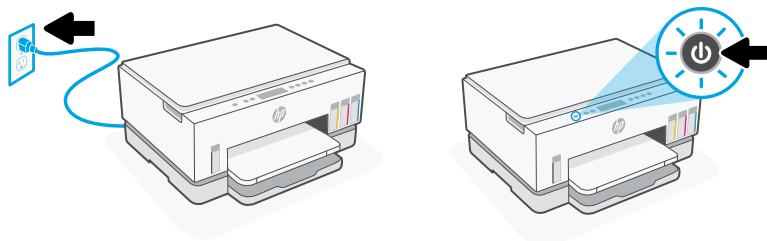
1. Remove all tape and packing materials. Close the scanner lid after opening.



2. Lift the ink access door by the side latch. Remove the cardboard and close the door. Open the input tray, remove the cardboard, and then close the tray.



3. Plug in and power on the printer. Keep the printer on during setup.



Choose an option to continue printer setup

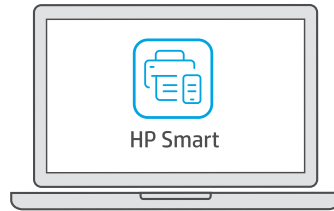
Recommended

Option 1: Guided setup with HP Smart

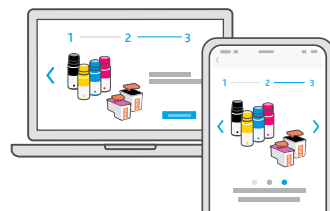
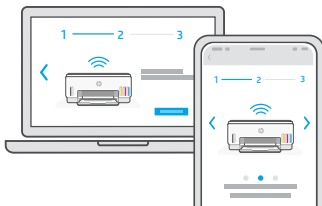
1. Go to 123.hp.com on a mobile device or computer to install the HP Smart software.



123.hp.com



2. Open **HP Smart**. If prompted, create or sign in to an HP account.
3. On the Home screen, choose the option to add a printer, and follow the instructions to connect the printer to your network.
4. View animations to fill ink tanks, install printheads, load paper, and perform printheads alignment in HP Smart.



Option 2: Manual setup

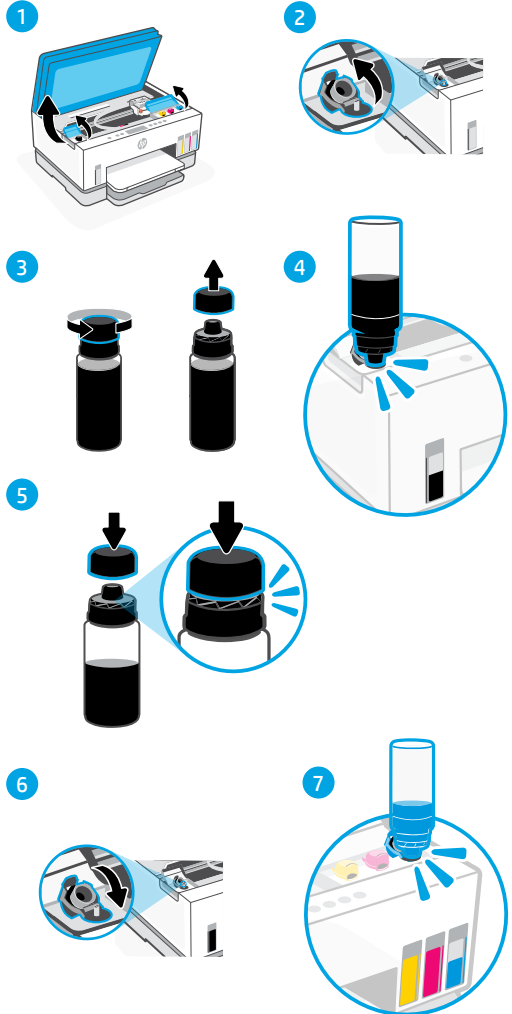
Follow illustrations in this guide to set up the hardware, then use the HP Smart software to connect to Wi-Fi and finish setup.




1 Fill the ink tanks



1. From the side of the printer, lift the ink access door. Open the tank covers on both sides of the printer.
2. Open the cap of the ink tank you want to fill.
3. Twist open the ink bottle.
4. Place the bottle upside down on the tank and click into place. Wait for the ink to fill the tank.
5. Close the ink bottle, firmly pushing the cap onto the bottle.
6. Close the tank cap securely.
7. Repeat to fill all tanks.
8. After filling all tanks, close the tank covers and ink access door securely.



 With the door closed, wait approximately 15 seconds for the printer to check ink.



2 Install printheads



Before installing printheads, ensure the following:

- The printer is on.
- All four ink tanks have been filled.
- You have closed the ink access door for approximately 15 seconds after filling ink.

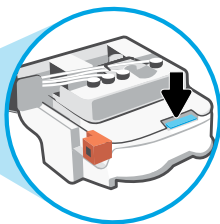
1. Lift the ink access door.

Make sure the print carriage has moved to the center; if not, close the door for 15 seconds.

1



2

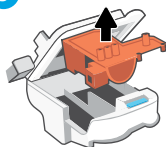


2. Press the blue button to open the printhead cover.

3. Remove and discard the orange guard.

Note: Keep the guard upright; handle carefully to avoid ink leaks.

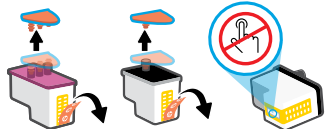
3



4. Remove the orange cap and tape from both printheads.

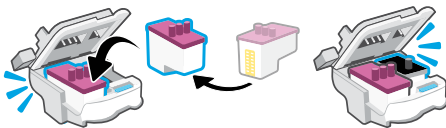
Caution: Do not touch the electric contacts or print nozzles under the tape.

4



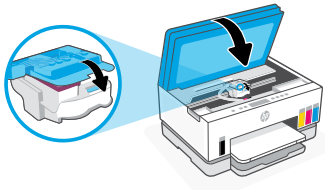
5. With the electric contacts facing inside, insert the printheads and click into place.

5



6. Close the printhead cover and the ink access door.

6

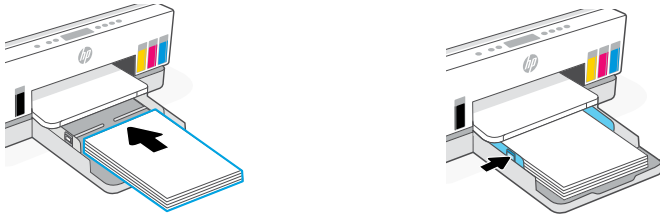


3 Load paper

1. Open the paper tray. Slide out the guides.

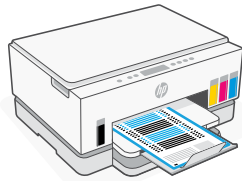



2. Load new, unused Letter or A4 paper, and adjust the paper guides. Close the tray.



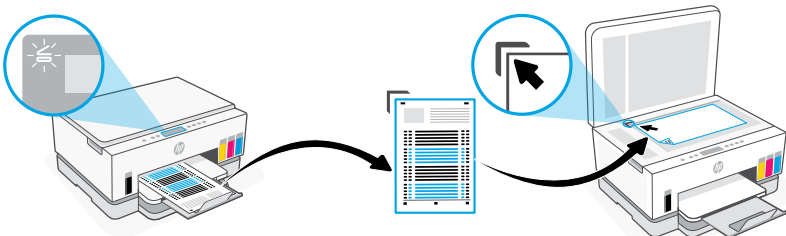
4 Scan the printhead alignment page

1. After loading paper, wait for the alignment page to print.



2. When the **Open Lid** light  blinks, open the scanner lid and place the printed page face-down on the scanner glass, aligned to the indicated corner.

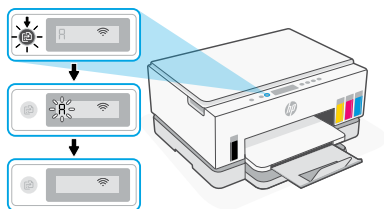
Note: Make sure you scan the alignment page printed by the printer.



3. Close the scanner lid.




4. Press the blinking Copy button to scan the page.
On the printer display, the icon "A" blinks until printhead alignment is finished.



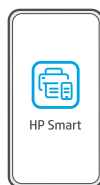
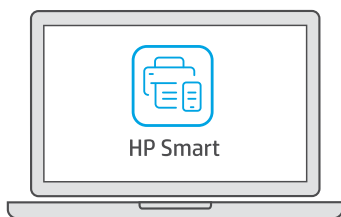
Printer hardware setup is complete after printhead alignment.

5 Install the HP Smart software

1. Make sure the **Wi-Fi** light  on the printer control panel is blinking.
If not, see the **Help and tips for Wi-Fi and connectivity** section in this guide.



2. Install the HP Smart software from **123.hp.com** on a computer or mobile device.



123.hp.com

3. Open **HP Smart**. If prompted, create or sign in to an HP account.
4. On the Home screen, choose the option to add a printer, and follow the instructions to connect the printer to your network.



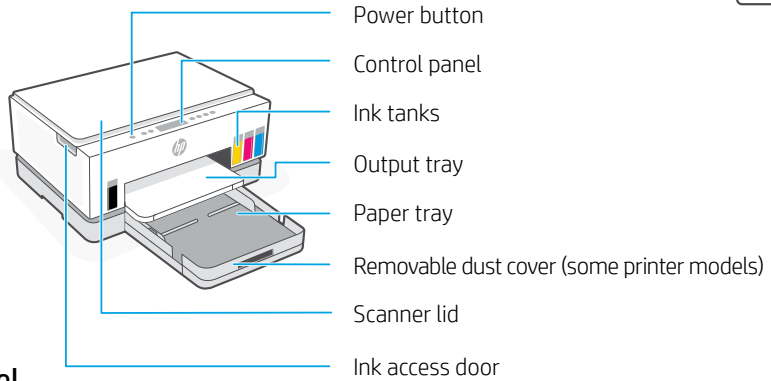
Get help with setup

Find setup information and videos online.

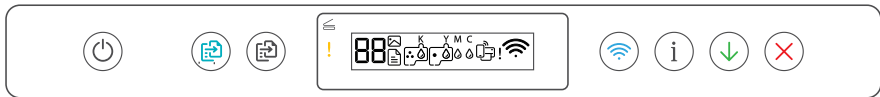
hp.com/support/printer-setup



Printer Reference



Control panel



Buttons and lights

- Power** button/light
- Color Copy** button/light
Press to start a color copy job.
- Black Copy** button/light
Press to start a black-and-white copy job.
Note: To increase number of copies, press the desired button multiple times or press and hold.
- Open Lid** light
Open the scanner lid to copy or scan.
- Attention** light
Indicates problems with paper, ink, or printheads.
- Wi-Fi** button/light
Turn on or off Wi-Fi capability. Wi-Fi light shows the wireless status.
- Information** button/light
Press to print a summary of printer settings and status.
- Resume** button/light
- Cancel** button

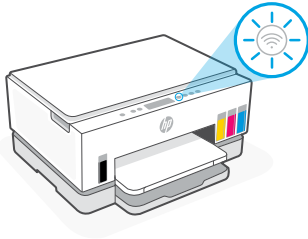



Display icons

- Media related issues, including out of paper.
E1/E2
Paper size mismatch.
E3
Print carriage jam or printhead cover not closed.
E4
Paper jam.
E7
Out of ink.
- Wi-Fi is disconnected. Restart setup mode.
K Y M C
 Ink related issues, including low on ink.
- Printheads related issues.
Note: Do not open the printhead cover unless instructed to do so.

For more information on lights and errors, visit hp.com/support

Help and tips for Wi-Fi and connectivity

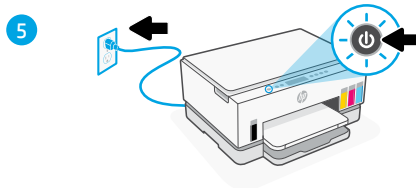
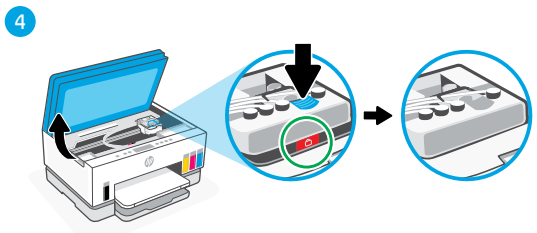
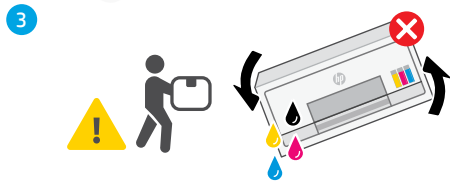
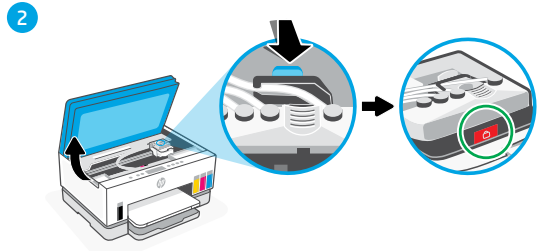
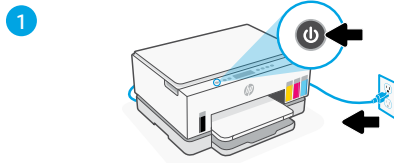
If the software is unable to find your printer during setup, check the following conditions to resolve the issue.

Potential Issue	Solution
<p>Printer Wi-Fi setup mode timed out</p> 	<p>If the Wi-Fi light is off, the printer might not be in Wi-Fi setup mode. Restart Wi-Fi setup mode:</p> <ol style="list-style-type: none">1. If the control panel is not lit, press any button to wake the printer.2. Press and hold  for 5 seconds until the control panel buttons light up.3. Press and hold  and  for 5 seconds until the Wi-Fi light blinks blue.4. Wait for one minute. Close and reopen HP Smart, and then try connecting again.
<p>Computer or mobile device too far from printer</p>	<p>Move your computer or mobile device closer to the printer. Your device might be out of range of the printer's Wi-Fi signal.</p>
<p>Computer connected to a Virtual Private Network (VPN) or remote work network</p>	<p>Disconnect from a VPN before installing HP Smart software. You can't install apps from the Microsoft Store when connected to a VPN. Connect to the VPN again after finishing printer setup.</p> <p>Note: Consider your location and the security of the Wi-Fi network before disconnecting from a VPN.</p>
<p>Wi-Fi turned off on computer (computer connected by Ethernet)</p>	<p>If your computer is connected by Ethernet, turn on the computer's Wi-Fi while setting up the printer. Disconnect the Ethernet cable temporarily to complete setup over Wi-Fi.</p>
<p>Bluetooth is turned off on your computer or mobile device</p> <p>Location is turned off on your mobile device</p>	<p>Turn on Bluetooth for the computer or mobile device being used to complete printer setup. For mobile devices, turn on Location services also. Bluetooth and Location help the software find your network and printer.</p> <p>Note: Your location is not being determined and no location information is being sent to HP as part of the setup process.</p>

Move printer properly

To move the printer to a different location outside of your home or office after initial setup, follow these instructions to prevent ink leaks or printer damage.

1. Turn off the printer and remove the power cord.
2. Lift the ink access door. Pull the gray tab (toward the front of the printer) and lift the printhead cover until the red label is visible. Close the ink access door.
3. Pack the printer in a box (if available). While moving the printer, keep the printer horizontal to prevent ink leakage.
4. After unpacking the printer, push down on the printhead cover to close. Make sure the cover is properly closed.
5. Connect the power cord and turn on the printer.



Help and Support

For printer troubleshooting and videos, visit the HP support site. Enter your model name to find the printer.

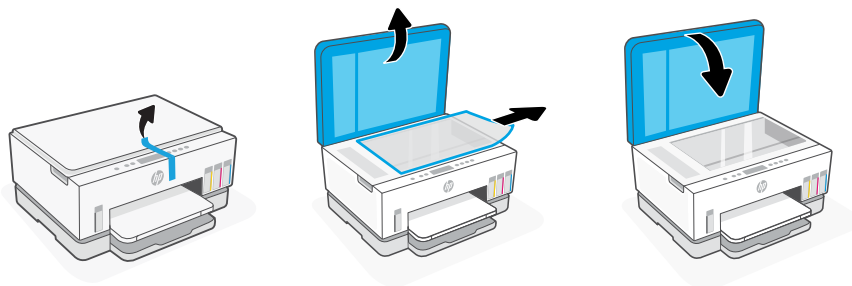


hp.com/support

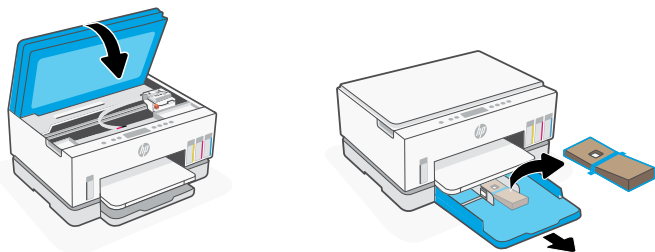
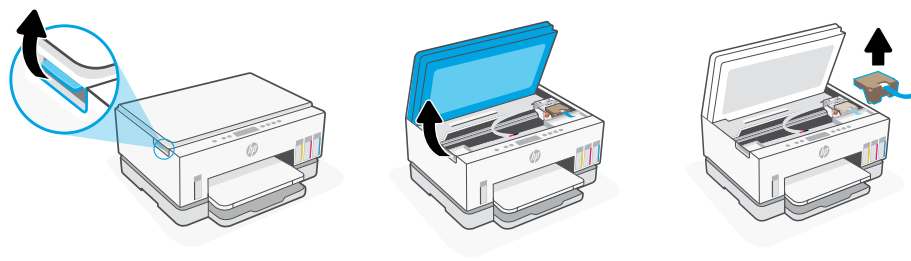


准备打印机

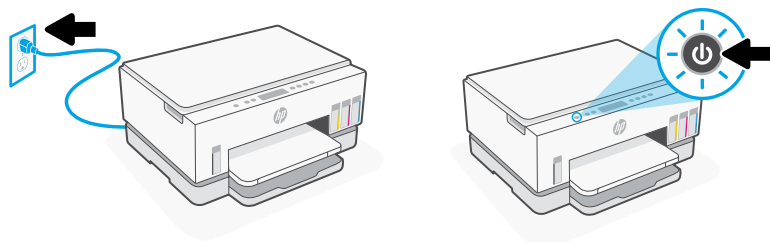
1. 取下所有胶带和包装材料。打开后合上扫描仪盖板。



2. 从侧面卡销抬起墨水检修门。取出纸板并关闭检修门。打开进纸盒，取出纸板，然后关闭纸盒。



3. 插入电源线，然后打开打印机。设置期间，保持打印机处于开启状态。

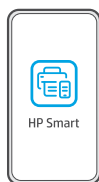


选择选项以继续打印机设置

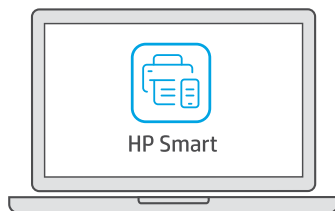
推荐

选项 1: HP Smart 引导设置

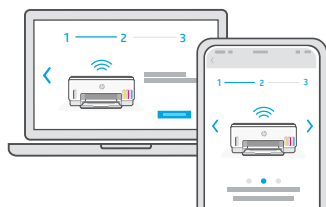
1. 使用移动设备或计算机访问 123.hp.com，安装 HP Smart 软件。



123.hp.com



2. 打开 HP Smart。如果出现提示，请创建或登录 HP 帐户。
3. 在主屏幕上，选择添加打印机的选项，然后按照说明将打印机连接到网络。
4. 在 HP Smart 中观看灌注墨槽、安装打印头、放入纸张和执行打印头校准的动画教程。



选项 2: 手动设置

按照本指南中的说明设置硬件，然后使用 HP Smart 软件来连接 Wi-Fi 并完成设置。



1 灌注墨槽

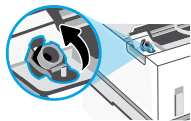


1. 从打印机前侧抬起墨水检修门。打开打印机两侧的墨槽盖帽。

1



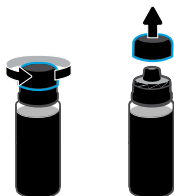
2



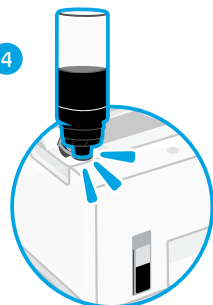
2. 打开待灌注墨槽的盖帽。

3. 拧开墨水瓶。

3



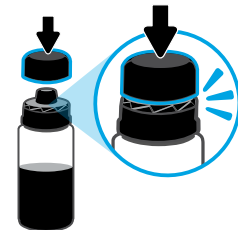
4



4. 将墨水瓶上下颠倒置于墨槽上，使其卡入到位。等待墨水灌满墨槽。

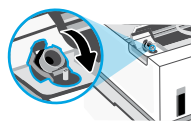
5. 关好墨水瓶，用力将盖帽装回墨水瓶上。

5

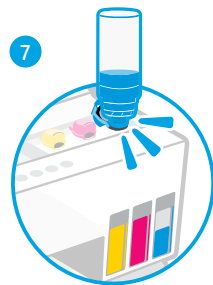


6. 将墨槽盖帽闭合到位。

6




7



7. 重复以上操作，灌注所有墨槽。

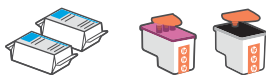
8. 灌注完所有墨槽后，关好槽盖和墨水检修门。

8

 关好检修门后，等待打印机检查墨水，此过程大约需要 15 秒。



2 安装打印头



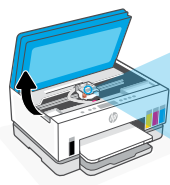
安装打印头前，请确保以下事项：

- 打印机已开启。
- 已灌注所有四个墨槽。
- 灌注墨槽后，您已关闭墨水检修门大约 15 秒。

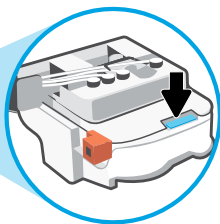
1. 抬起墨水检修门。

确保墨盒托架已移动到中间位置；如果未处于中间位置，请关闭检修门 15 秒。

1



2

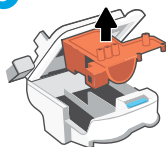


2. 按下蓝色按钮，打开打印头盖。

3. 取出橙色防护件并将其丢弃。

注意：确保防护件处于直立状态；
请小心操作，避免漏墨。

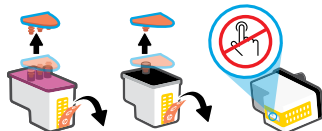
3



4. 取下两个打印头上的橙色盖帽和胶带。

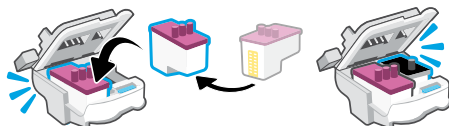
警告：请不要触碰胶带下的电气触点和打印喷嘴。

4



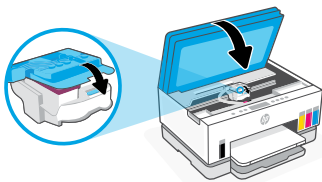
5. 电气触点朝内插入打印头，并使其卡入到位。

5



6. 关闭打印头盖和墨水检修门。

6

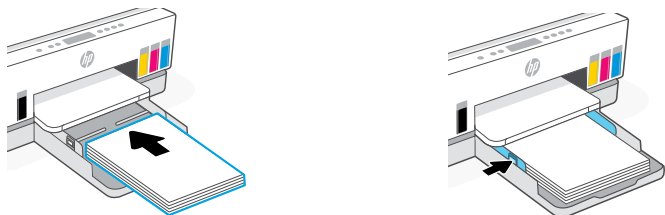


3 放入纸张

1. 打开纸盒。抽出导轨。

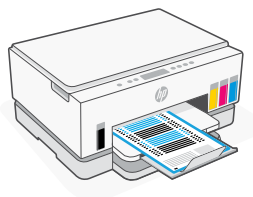



2. 放入全新未使用的 Letter 或 A4 纸张，然后调整纸张导轨。合上纸盒。



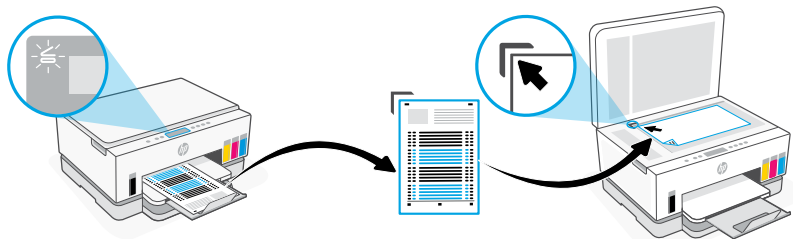
4 扫描打印头校准页

1. 放入纸张后，等待打印校准页。

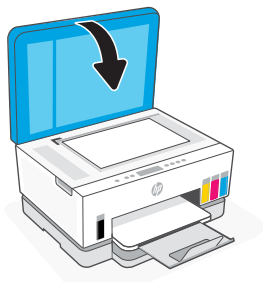


2. 开盖指示灯  闪烁时，打开扫描仪盖板并将已打印页面朝下放在扫描仪玻璃板上，与所示的角对齐。

注意：请务必扫描打印机打印的校准页。

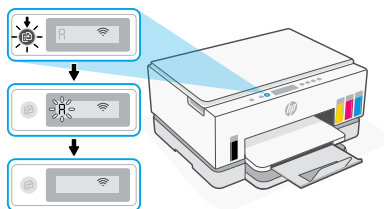


3. 合上扫描仪盖板。




4. 按下闪烁的“复印”按钮以扫描页面。

在打印机显示屏上，“A”图标会闪烁，直至完成打印头校准。

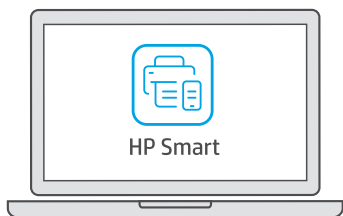


打印头校准完成后，打印机硬件设置完成。

5 安装 HP Smart 软件

1. 确保打印机控制面板上的Wi-Fi 指示灯  闪烁。如果没有，请查看本指南的 **Wi-Fi 及连接帮助与提示** 部分。

2. 在计算机或移动设备上访问 123.hp.com，安装 HP Smart 软件。



123.hp.com

3. 打开 **HP Smart**。如果出现提示，请创建或登录 HP 帐户。

4. 在主屏幕上，选择添加打印机的选项，然后按照说明将打印机连接到网络。



获取有关设置的帮助

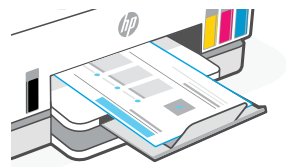
在线查找设置信息和视频。

hp.com/support/printer-setup



6 设置微信打印（可选）

注意：微信仅在部分国家/地区可用。



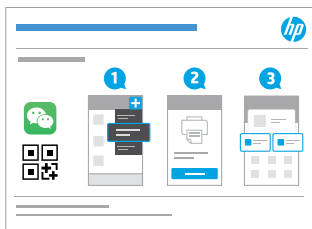
当完成以上安装步骤并将打印机成功连接至无线网络后，打印机将自动打印 出一张带有二维码的信息页。

如果您没有获得信息页，请访问此网址或扫描此二维码并根据教程重新打印信息页。

<https://iot.eprintsw.com/www/faq.html>



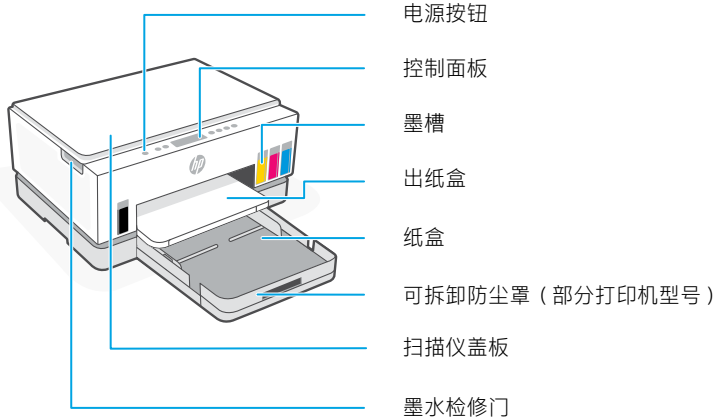
使用微信扫描信息页上的二维码以启用“惠普云打印”微信小程序，并根据页面提示完成打印机的绑定。



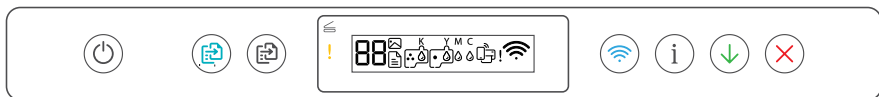
获取有关设置的帮助
在线查找设置信息和视频。

hp.com/support/printer-setup














控制面板



按钮和指示灯

-  **电源按钮/指示灯**
-  **彩色复印按钮/指示灯**
按此按钮可启动彩色复印作业。
-  **黑白复印按钮/指示灯**
按此按钮可启动黑白复印作业。
- 注意:** 若要增加份数, 多按几次或按住所需按钮即可。
-  **开盖指示灯**
打开扫描仪盖板以复制或扫描。
-  **警示灯**
指示纸张、墨水或打印头相关问题。
-  **Wi-Fi 按钮指示灯**
打开或关闭 Wi-Fi 功能。Wi-Fi 指示灯可显示无线状态。
-  **信息按钮/指示灯**
按下即可打印打印机设置和状态的摘要。
-  **恢复按钮/指示灯**
-  **取消按钮**

显示屏图标

-  **介质相关问题, 其中包括缺纸。**
 - E1/E2**
纸张尺寸不匹配。
 - E3**
墨盒托架卡住或打印头盖未关闭。
 - E4**
卡纸。
 - E7**
缺墨。
-  **Wi-Fi 已断开连接。重新启动设置模式。**
 - K Y M C**

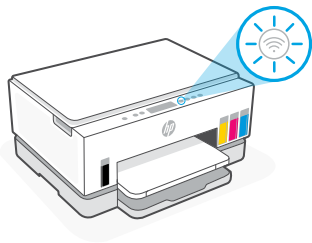
墨水相关问题, 其中包括墨水不足。
 - 
打印头相关问题。
- 注意:** 请勿打开打印头盖, 必要情况除外。

有关指示灯和错误的详细信息, 请访问
hp.com/support

Wi-Fi 及连接帮助与提示

如果软件在设置过程中未能找到打印机，请检查以下情况以解决问题。

潜在问题	解决方案
打印机 Wi-Fi 设置模式超时	如果 Wi-Fi 指示灯熄灭，则打印机可能未处于 Wi-Fi 设置模式。重新启动 Wi-Fi 设置模式： <ol style="list-style-type: none">1. 如果控制面板未亮起，按下任意按钮可唤醒打印机。2. 按住 ⓘ 5 秒，直至控制面板按钮亮起。3. 按住 📶 和 ⊗ 5 秒，直至 Wi-Fi 指示灯闪烁蓝色。4. 等待 1 分钟。关闭并重新打开 HP Smart，然后再次尝试连接。
计算机或移动设备离打印机过远	将计算机或移动设备靠近打印机。设备可能已超出打印机的 Wi-Fi 信号范围。
计算机已连接至虚拟专用网络 (VPN) 或远程工作网络	请先断开 VPN，然后再安装 HP Smart 软件。与 VPN 连接时，无法通过 Microsoft Store 安装应用。完成打印机设置后再连接 VPN。 注意： 在断开 VPN 连接之前，请考虑您的位置和 Wi-Fi 网络的安全性。
计算机上的 Wi-Fi 已关闭 (计算机通过以太网连接)。	如果计算机通过以太网连接，请在设置打印机时开启计算机的 Wi-Fi。暂时断开以太网电缆，以便通过 Wi-Fi 完成设置。
计算机或移动设备上的蓝牙已关闭。 移动设备上的定位功能已关闭。	开启正在使用的计算机或移动设备的蓝牙，以完成打印机设置。对于移动设备，还应开启定位服务。蓝牙和定位功能有助于软件找到您的网络和打印机。 注意： 我们不会确定您的位置，设置过程中，也不会将位置信息发送到 HP。



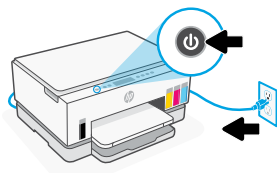
正确移动打印机

 hp.com/support/transportmarttank

初始安装后要将打印机移动到住宅或办公室以外的其他位置，请按照以下说明进行操作，防止墨水泄漏或打印机损坏。

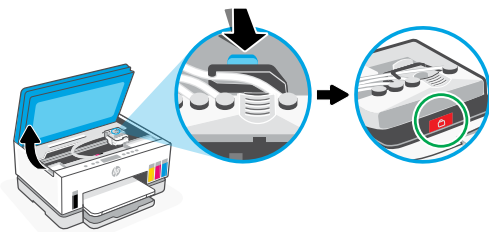
1. 关闭打印机，断开电源线。

1



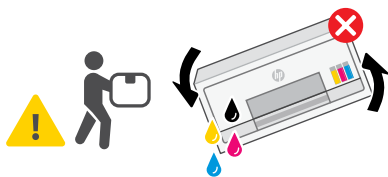
2. 抬起墨水检修门。拉动灰色耳片（朝打印机前面），然后抬起打印头盖，直至看见红色标签。关闭墨水检修门。

2



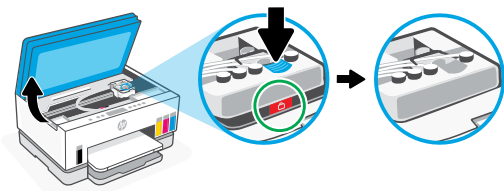
3. 将打印机打包（如适用）。
移动打印机时，使打印机保持水平状态，防止墨水泄漏。

3



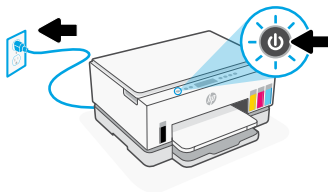
4. 打开打印机包装后，按下打印头盖以进行关闭。确保正确关闭打印头盖。

4



5. 连接电源线并打开打印机。

5



帮助和支持

如需打印机故障排除和视频，请访问 HP 支持网站。
输入您的型号名称以查找打印机。



hp.com/support



© Copyright 2023 HP Development Company, L.P.

Microsoft is a registered trademark of Microsoft Corporation in the United States and/or other countries.
All third party trademarks are the property of their respective owners.

Printed in China
中国印刷

EN

ZHCN



6UU48-90028