

# Interactive Part Locator

## HP 23.8-inch All-in-One Desktop PC Series

Welcome to the interactive part locator for the  
HP 23.8-inch All-in-One Desktop PC Series

### Here's how to use it...

[External Views](#) (Click the link to navigate to the views)

On this page you will find large icons of each of the external views of this product. To view a specific view in greater detail, simply click that view.

[Parts List](#) (Click the link to navigate to the parts)

On this page, you will find a list of all of the replaceable parts for this product. To view a specific part and its location in the product, click the part name in the list.

**That's it! On every page there is a link that brings you back to either the External Views or the Parts List, enabling you to navigate to whatever view or part you wish to review.**

 To exit or enter full screen mode, press Ctrl + L on your keyboard

# External Views

[Back to Welcome page](#)



Front



Left



Right



Rear



Display



Top



Bottom



Internal

[Go to Parts List](#)

# Front View

[Back to External Views](#)



Speaker  
mesh

[Go to Parts List](#)

# Left View

[Back to External Views](#)



[Go to Parts List](#)

# Right View

[Back to External Views](#)



[Go to Parts List](#)

# Rear View

[Back to External Views](#)



HP logo

HDMI out port

Kensington MicroSaver Lock

RJ-45 (Ethernet) port

AC adapter port

Power button

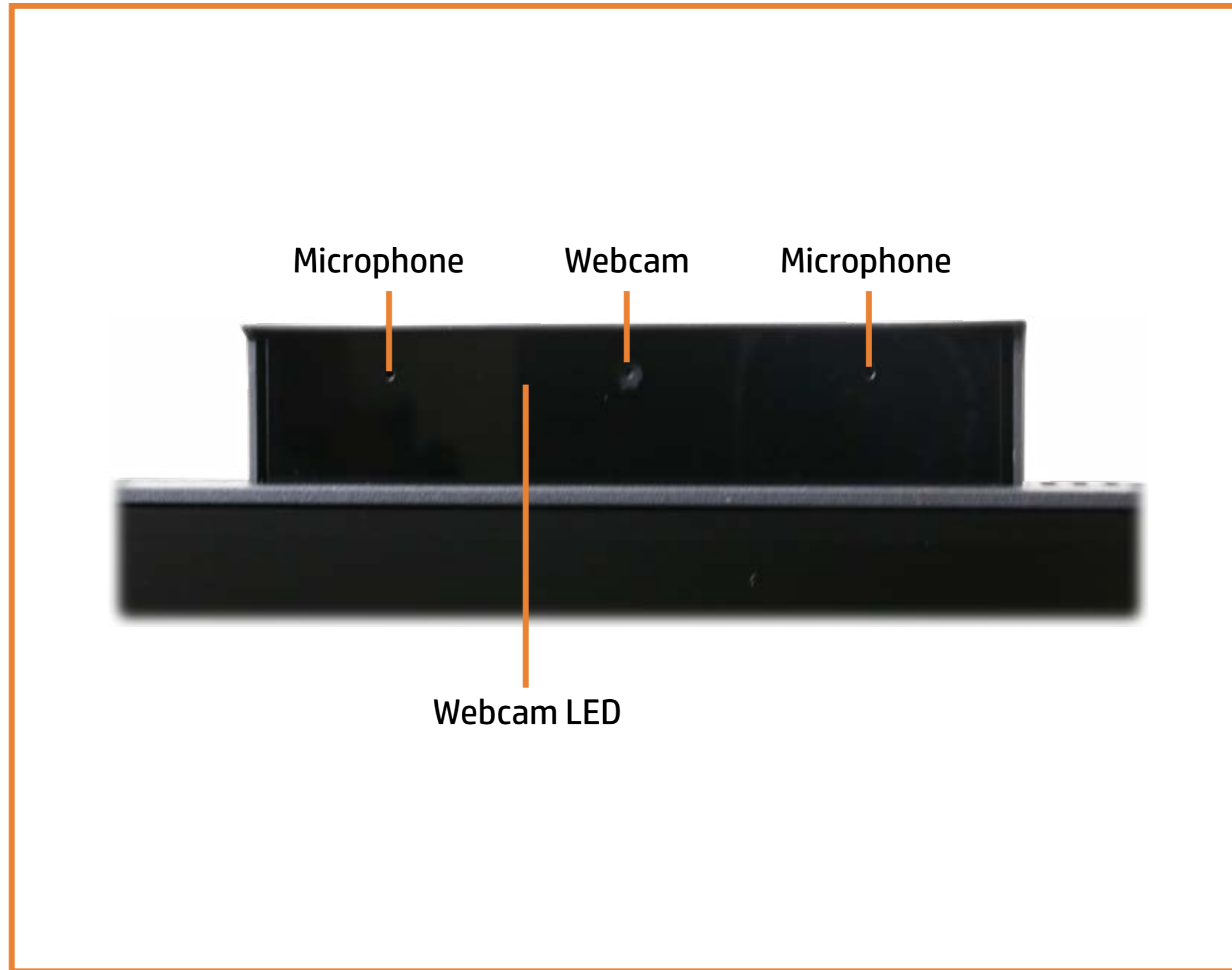
USB-A 3.2 Gen 1 port

USB-A 2.0 ports

[Go to Parts List](#)

# Display View

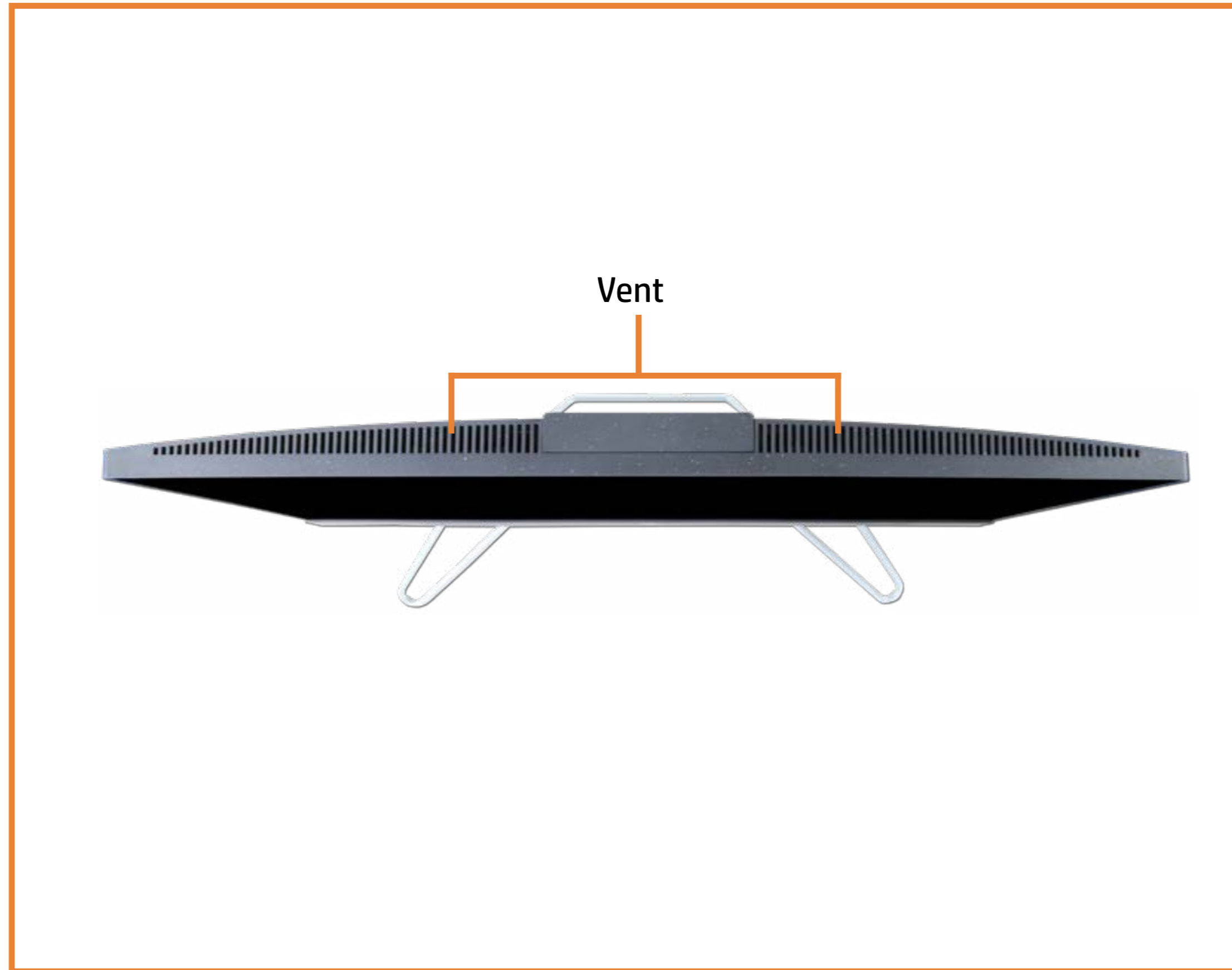
[Back to External Views](#)



[Go to Parts List](#)

# Top View

[Back to External Views](#)

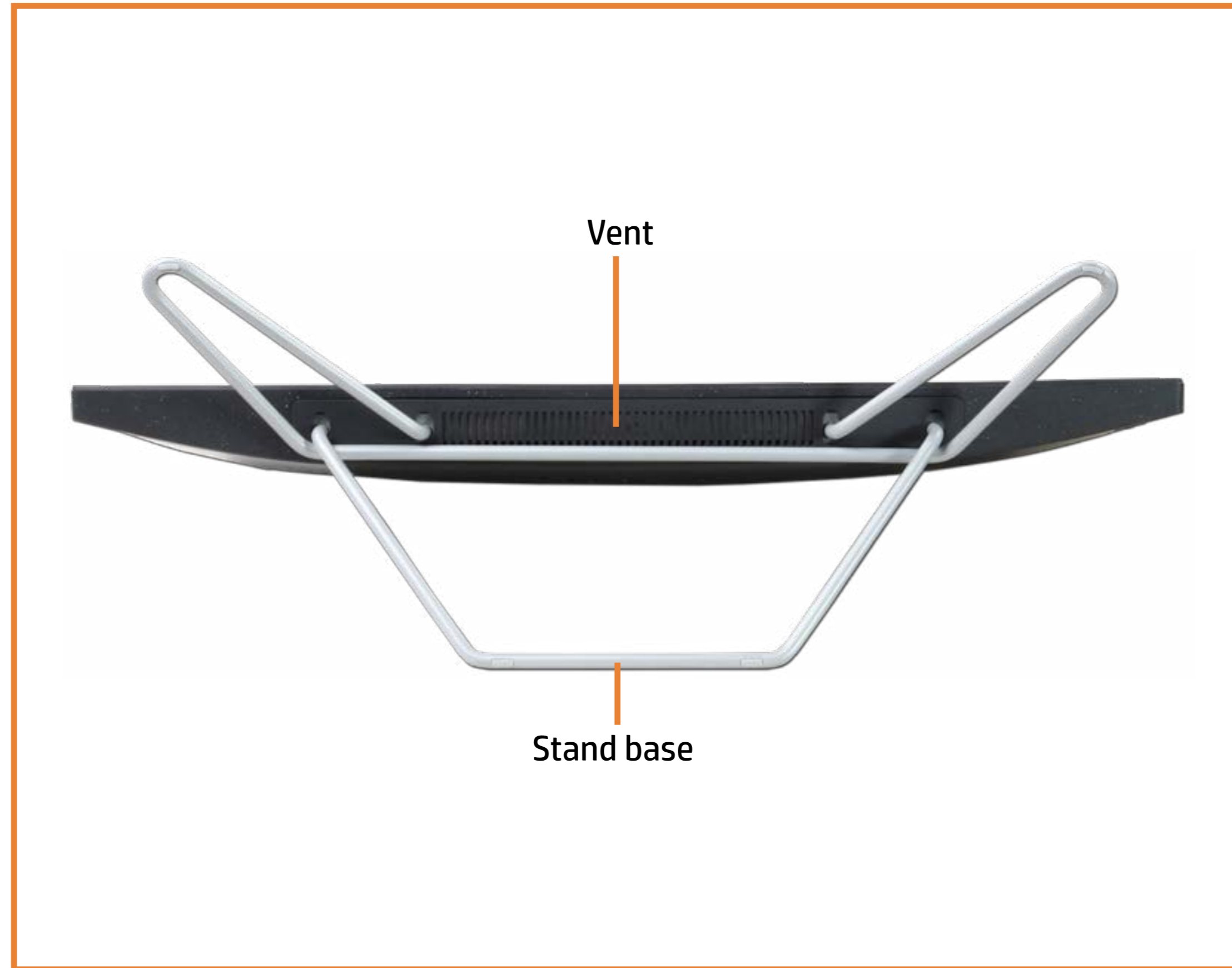


[Go to Parts List](#)



# Bottom View

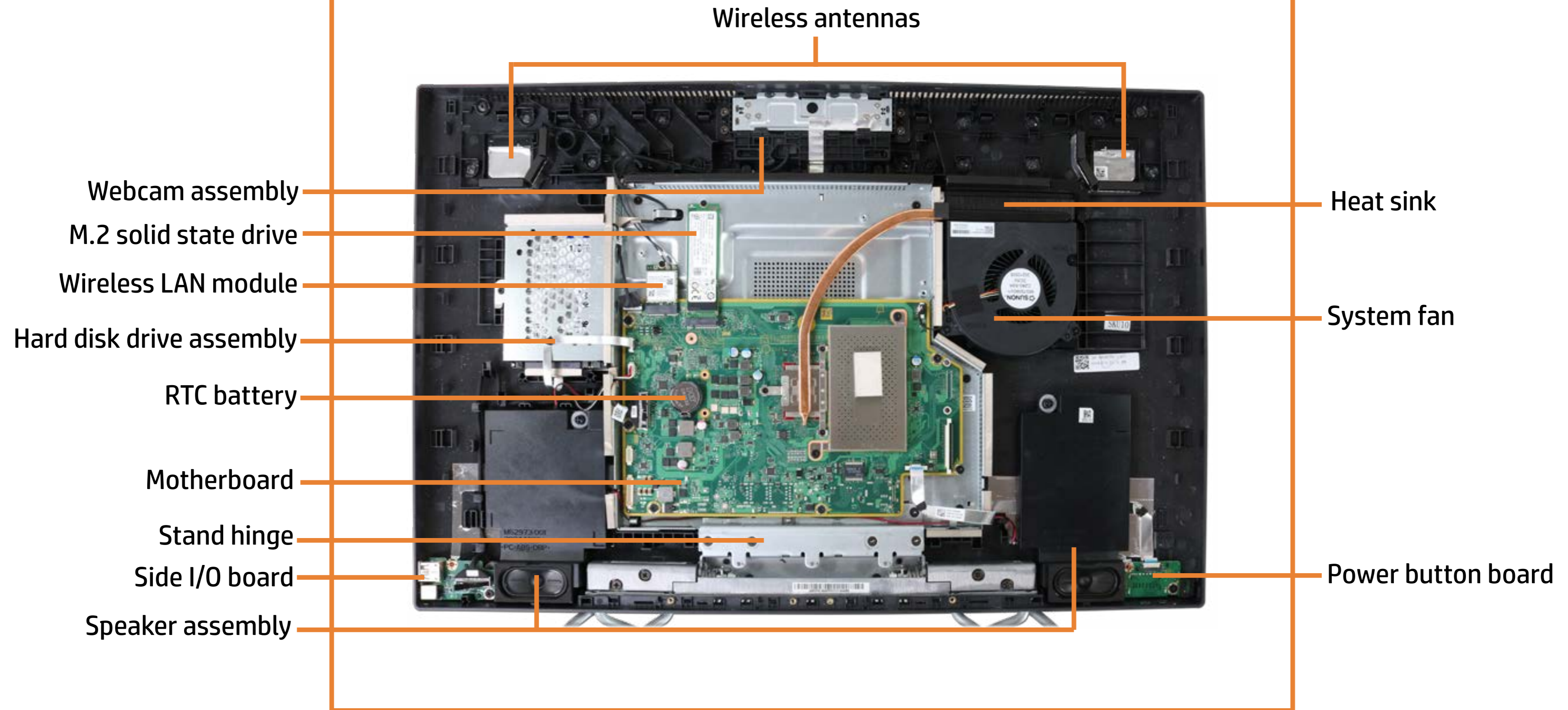
[Back to External Views](#)



[Go to Parts List](#)

# Internal View

[Back to External Views](#)



[Go to Parts List](#)

# Speaker Mesh

## Speaker Mesh

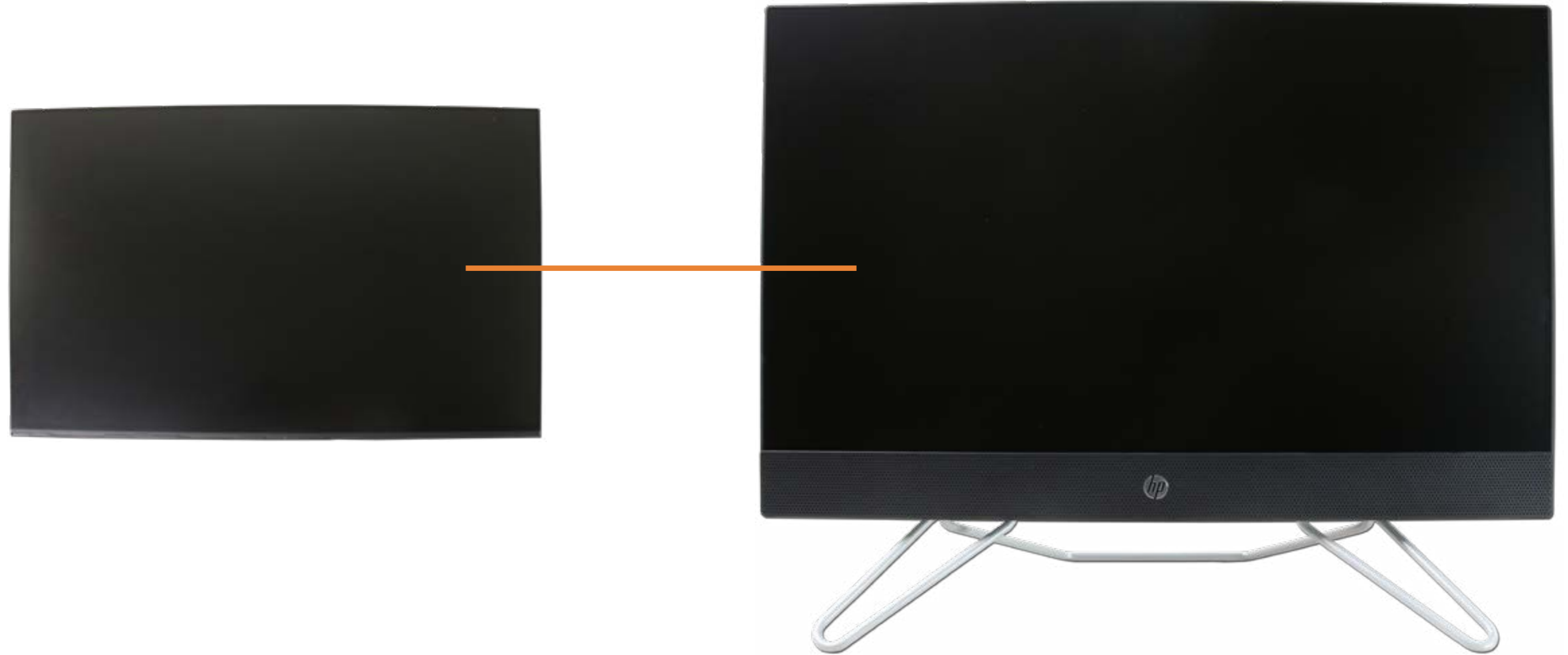
- Display Panel Assembly
- M.2 Solid State Drive
- Wireless LAN Module
- Memory module(s)
- Hard Disk Drive Assembly
- Hard Disk Drive Cable
- Speaker Assembly
- Power Button Board
- Power Button Board Cable
- Side I/O Board
- Side I/O Board Cable
- System Fan
- Heat Sink
- Motherboard with RTC Battery (Top)
- Motherboard with RTC Battery (Bottom)
- Webcam Assembly
- Webcam Module
- Wireless Antennas
- Stand Base
- Stand Hinge
- Back Cover
- LVDS Cable
- Touch Control Cable
- Backlight Cable
- Display Panel Frame
- Display Panel



[Go to External Views](#)

# Display Panel Assembly

- Speaker Mesh
- Display Panel Assembly**
- M.2 Solid State Drive
- Wireless LAN Module
- Memory module(s)
- Hard Disk Drive Assembly
- Hard Disk Drive Cable
- Speaker Assembly
- Power Button Board
- Power Button Board Cable
- Side I/O Board
- Side I/O Board Cable
- System Fan
- Heat Sink
- Motherboard with RTC Battery (Top)
- Motherboard with RTC Battery (Bottom)
- Webcam Assembly
- Webcam Module
- Wireless Antennas
- Stand Base
- Stand Hinge
- Back Cover
- LVDS Cable
- Touch Control Cable
- Backlight Cable
- Display Panel Frame
- Display Panel



[Go to External Views](#)

# M.2 Solid State Drive

- Speaker Mesh
- Display Panel Assembly
- M.2 Solid State Drive**
- Wireless LAN Module
- Memory module(s)
- Hard Disk Drive Assembly
- Hard Disk Drive Cable
- Speaker Assembly
- Power Button Board
- Power Button Board Cable
- Side I/O Board
- Side I/O Board Cable
- System Fan
- Heat Sink
- Motherboard with RTC Battery (Top)
- Motherboard with RTC Battery (Bottom)
- Webcam Assembly
- Webcam Module
- Wireless Antennas
- Stand Base
- Stand Hinge
- Back Cover
- LVDS Cable
- Touch Control Cable
- Backlight Cable
- Display Panel Frame
- Display Panel



[Go to External Views](#)

# Wireless LAN Module

- Speaker Mesh
- Display Panel Assembly
- M.2 Solid State Drive
- Wireless LAN Module**
- Memory module(s)
- Hard Disk Drive Assembly
- Hard Disk Drive Cable
- Speaker Assembly
- Power Button Board
- Power Button Board Cable
- Side I/O Board
- Side I/O Board Cable
- System Fan
- Heat Sink
- Motherboard with RTC Battery (Top)
- Motherboard with RTC Battery (Bottom)
- Webcam Assembly
- Webcam Module
- Wireless Antennas
- Stand Base
- Stand Hinge
- Back Cover
- LVDS Cable
- Touch Control Cable
- Backlight Cable
- Display Panel Frame
- Display Panel



[Go to External Views](#)

# Memory Module (s)

- Speaker Mesh
- Display Panel Assembly
- M.2 Solid State Drive
- Wireless LAN Module
- Memory module(s)**
- Hard Disk Drive Assembly
- Hard Disk Drive Cable
- Speaker Assembly
- Power Button Board
- Power Button Board Cable
- Side I/O Board
- Side I/O Board Cable
- System Fan
- Heat Sink
- Motherboard with RTC Battery (Top)
- Motherboard with RTC Battery (Bottom)
- Webcam Assembly
- Webcam Module
- Wireless Antennas
- Stand Base
- Stand Hinge
- Back Cover
- LVDS Cable
- Touch Control Cable
- Backlight Cable
- Display Panel Frame
- Display Panel



[Go to External Views](#)

# Hard Disk Drive Assembly

- Speaker Mesh
- Display Panel Assembly
- M.2 Solid State Drive
- Wireless LAN Module
- Memory module(s)
- Hard Disk Drive Assembly**
- Hard Disk Drive Cable
- Speaker Assembly
- Power Button Board
- Power Button Board Cable
- Side I/O Board
- Side I/O Board Cable
- System Fan
- Heat Sink
- Motherboard with RTC Battery (Top)
- Motherboard with RTC Battery (Bottom)
- Webcam Assembly
- Webcam Module
- Wireless Antennas
- Stand Base
- Stand Hinge
- Back Cover
- LVDS Cable
- Touch Control Cable
- Backlight Cable
- Display Panel Frame
- Display Panel



[Go to External Views](#)

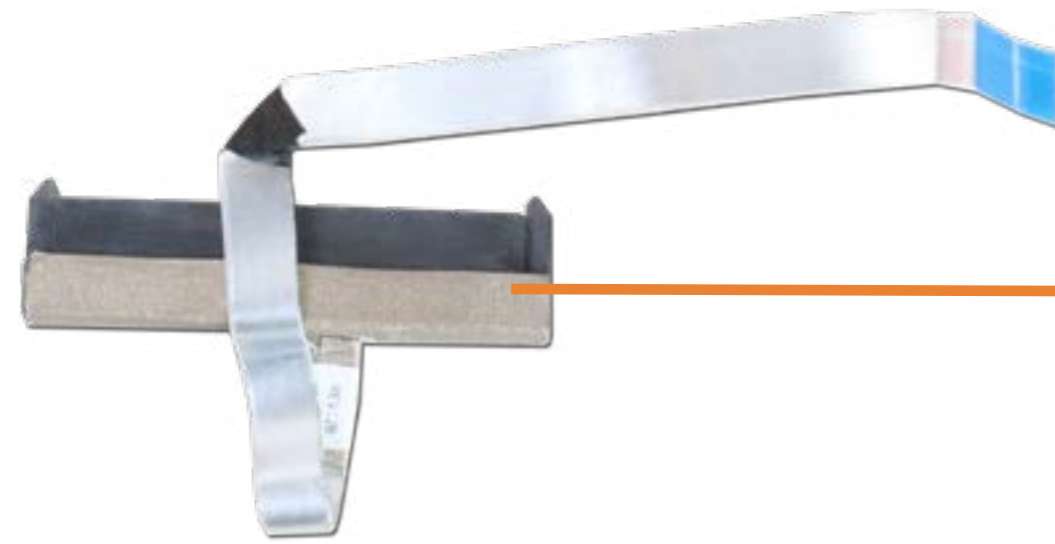


# Hard Disk Drive Cable

- Speaker Mesh
- Display Panel Assembly
- M.2 Solid State Drive
- Wireless LAN Module
- Memory module(s)
- Hard Disk Drive Assembly

## Hard Disk Drive Cable

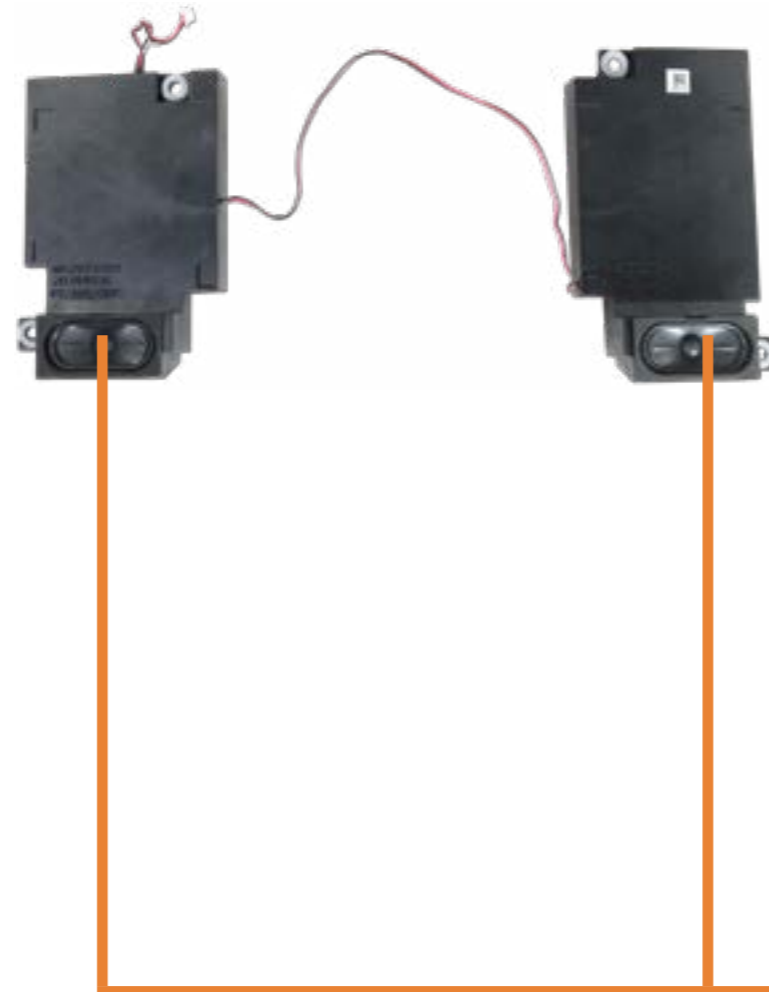
- Speaker Assembly
- Power Button Board
- Power Button Board Cable
- Side I/O Board
- Side I/O Board Cable
- System Fan
- Heat Sink
- Motherboard with RTC Battery (Top)
- Motherboard with RTC Battery (Bottom)
- Webcam Assembly
- Webcam Module
- Wireless Antennas
- Stand Base
- Stand Hinge
- Back Cover
- LVDS Cable
- Touch Control Cable
- Backlight Cable
- Display Panel Frame
- Display Panel



[Go to External Views](#)

# Speaker Assembly

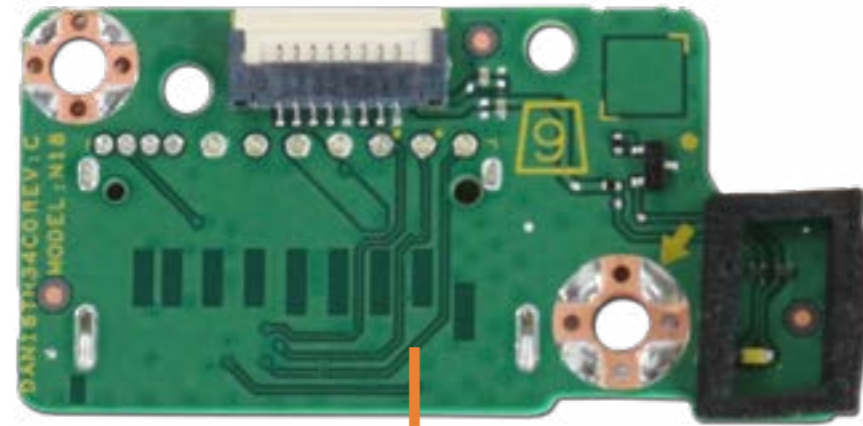
- Speaker Mesh
- Display Panel Assembly
- M.2 Solid State Drive
- Wireless LAN Module
- Memory module(s)
- Hard Disk Drive Assembly
- Hard Disk Drive Cable
- Speaker Assembly**
- Power Button Board
- Power Button Board Cable
- Side I/O Board
- Side I/O Board Cable
- System Fan
- Heat Sink
- Motherboard with RTC Battery (Top)
- Motherboard with RTC Battery (Bottom)
- Webcam Assembly
- Webcam Module
- Wireless Antennas
- Stand Base
- Stand Hinge
- Back Cover
- LVDS Cable
- Touch Control Cable
- Backlight Cable
- Display Panel Frame
- Display Panel



[Go to External Views](#)

# Power Button Board

- Speaker Mesh
- Display Panel Assembly
- M.2 Solid State Drive
- Wireless LAN Module
- Memory module(s)
- Hard Disk Drive Assembly
- Hard Disk Drive Cable
- Speaker Assembly
- Power Button Board**
- Power Button Board Cable
- Side I/O Board
- Side I/O Board Cable
- System Fan
- Heat Sink
- Motherboard with RTC Battery (Top)
- Motherboard with RTC Battery (Bottom)
- Webcam Assembly
- Webcam Module
- Wireless Antennas
- Stand Base
- Stand Hinge
- Back Cover
- LVDS Cable
- Touch Control Cable
- Backlight Cable
- Display Panel Frame
- Display Panel



[Go to External Views](#)

# Power Button Board Cable

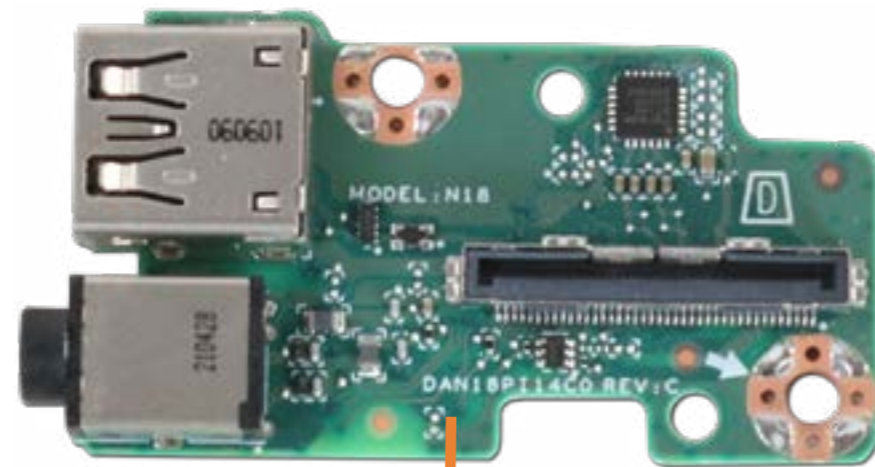
- Speaker Mesh
- Display Panel Assembly
- M.2 Solid State Drive
- Wireless LAN Module
- Memory module(s)
- Hard Disk Drive Assembly
- Hard Disk Drive Cable
- Speaker Assembly
- Power Button Board
- Power Button Board Cable**
- Side I/O Board
- Side I/O Board Cable
- System Fan
- Heat Sink
- Motherboard with RTC Battery (Top)
- Motherboard with RTC Battery (Bottom)
- Webcam Assembly
- Webcam Module
- Wireless Antennas
- Stand Base
- Stand Hinge
- Back Cover
- LVDS Cable
- Touch Control Cable
- Backlight Cable
- Display Panel Frame
- Display Panel



[Go to External Views](#)

# Side I/O Board

- Speaker Mesh
- Display Panel Assembly
- M.2 Solid State Drive
- Wireless LAN Module
- Memory module(s)
- Hard Disk Drive Assembly
- Hard Disk Drive Cable
- Speaker Assembly
- Power Button Board
- Power Button Board Cable
- Side I/O Board**
- Side I/O Board Cable
- System Fan
- Heat Sink
- Motherboard with RTC Battery (Top)
- Motherboard with RTC Battery (Bottom)
- Webcam Assembly
- Webcam Module
- Wireless Antennas
- Stand Base
- Stand Hinge
- Back Cover
- LVDS Cable
- Touch Control Cable
- Backlight Cable
- Display Panel Frame
- Display Panel



[Go to External Views](#)

# Side I/O Board Cable

- Speaker Mesh
- Display Panel Assembly
- M.2 Solid State Drive
- Wireless LAN Module
- Memory module(s)
- Hard Disk Drive Assembly
- Hard Disk Drive Cable
- Speaker Assembly
- Power Button Board
- Power Button Board Cable
- Side I/O Board
- Side I/O Board Cable**
- System Fan
- Heat Sink
- Motherboard with RTC Battery (Top)
- Motherboard with RTC Battery (Bottom)
- Webcam Assembly
- Webcam Module
- Wireless Antennas
- Stand Base
- Stand Hinge
- Back Cover
- LVDS Cable
- Touch Control Cable
- Backlight Cable
- Display Panel Frame
- Display Panel



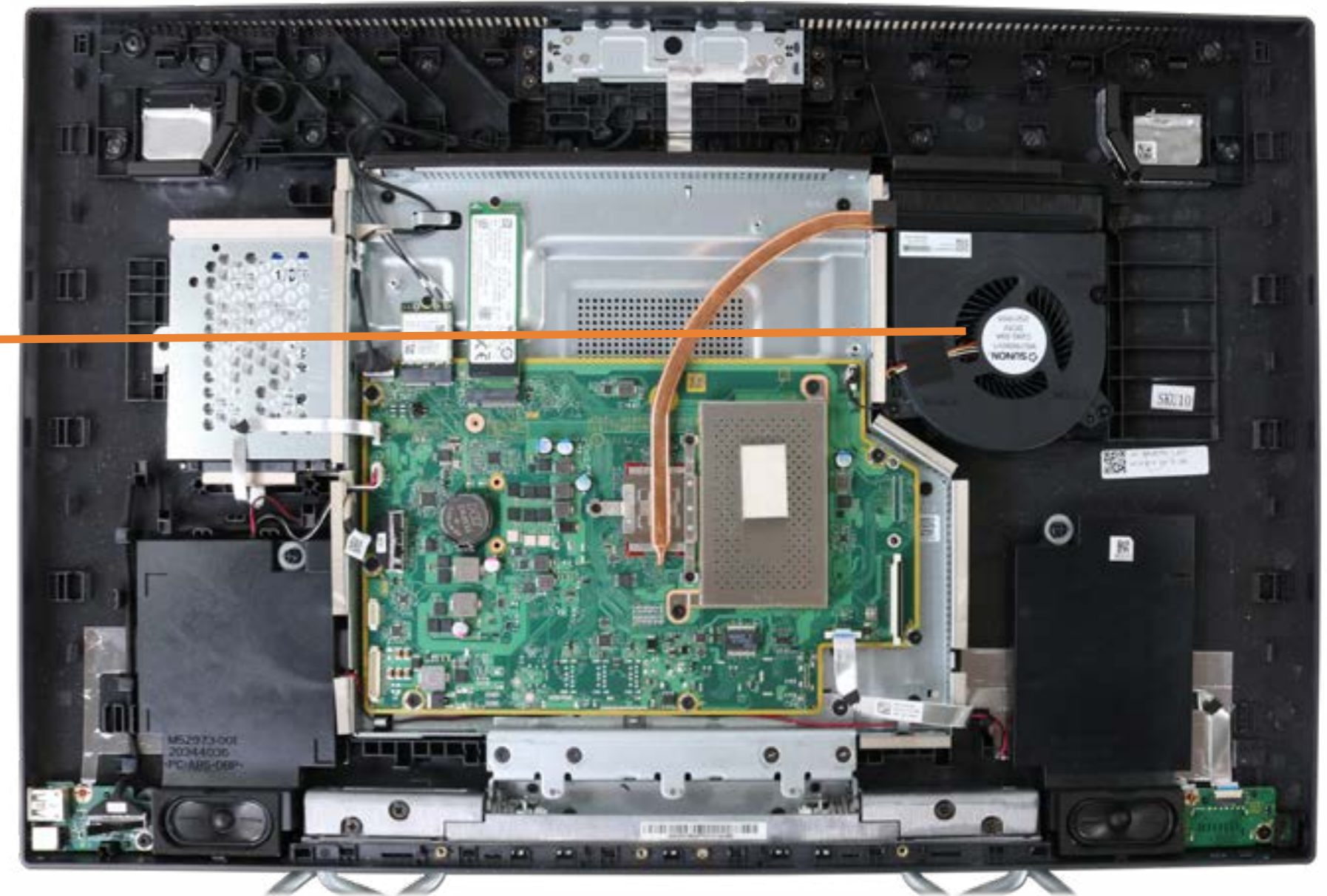
[Go to External Views](#)

# System Fan

- Speaker Mesh
- Display Panel Assembly
- M.2 Solid State Drive
- Wireless LAN Module
- Memory module(s)
- Hard Disk Drive Assembly
- Hard Disk Drive Cable
- Speaker Assembly
- Power Button Board
- Power Button Board Cable
- Side I/O Board
- Side I/O Board Cable

## System Fan

- Heat Sink
- Motherboard with RTC Battery (Top)
- Motherboard with RTC Battery (Bottom)
- Webcam Assembly
- Webcam Module
- Wireless Antennas
- Stand Base
- Stand Hinge
- Back Cover
- LVDS Cable
- Touch Control Cable
- Backlight Cable
- Display Panel Frame
- Display Panel



[Go to External Views](#)

# Heat Sink

- Speaker Mesh
- Display Panel Assembly
- M.2 Solid State Drive
- Wireless LAN Module
- Memory module(s)
- Hard Disk Drive Assembly
- Hard Disk Drive Cable
- Speaker Assembly
- Power Button Board
- Power Button Board Cable
- Side I/O Board
- Side I/O Board Cable
- System Fan
- Heat Sink**
- Motherboard with RTC Battery (Top)
- Motherboard with RTC Battery (Bottom)
- Webcam Assembly
- Webcam Module
- Wireless Antennas
- Stand Base
- Stand Hinge
- Back Cover
- LVDS Cable
- Touch Control Cable
- Backlight Cable
- Display Panel Frame
- Display Panel

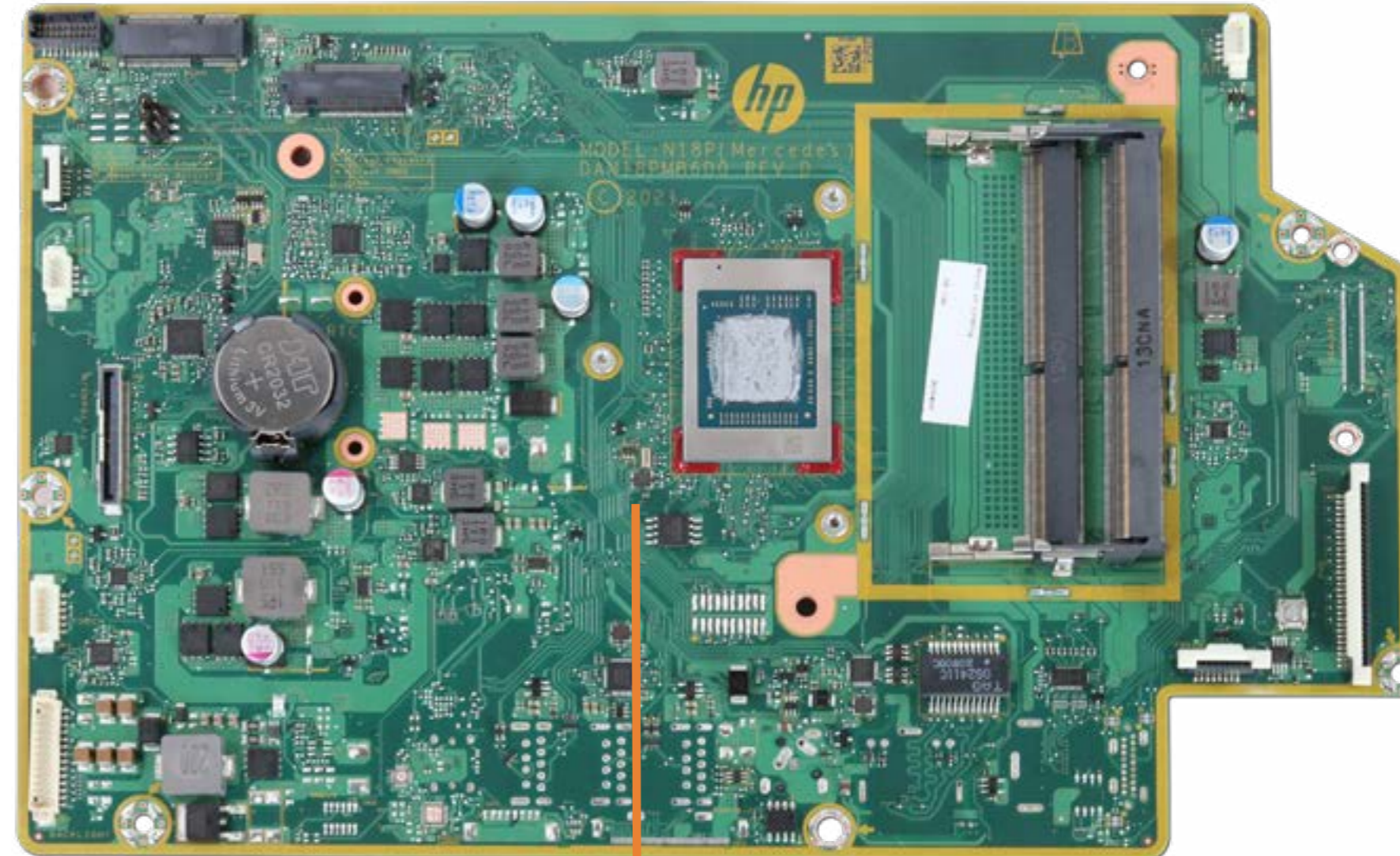


[Go to External Views](#)



# Motherboard with RTC Battery (Top)

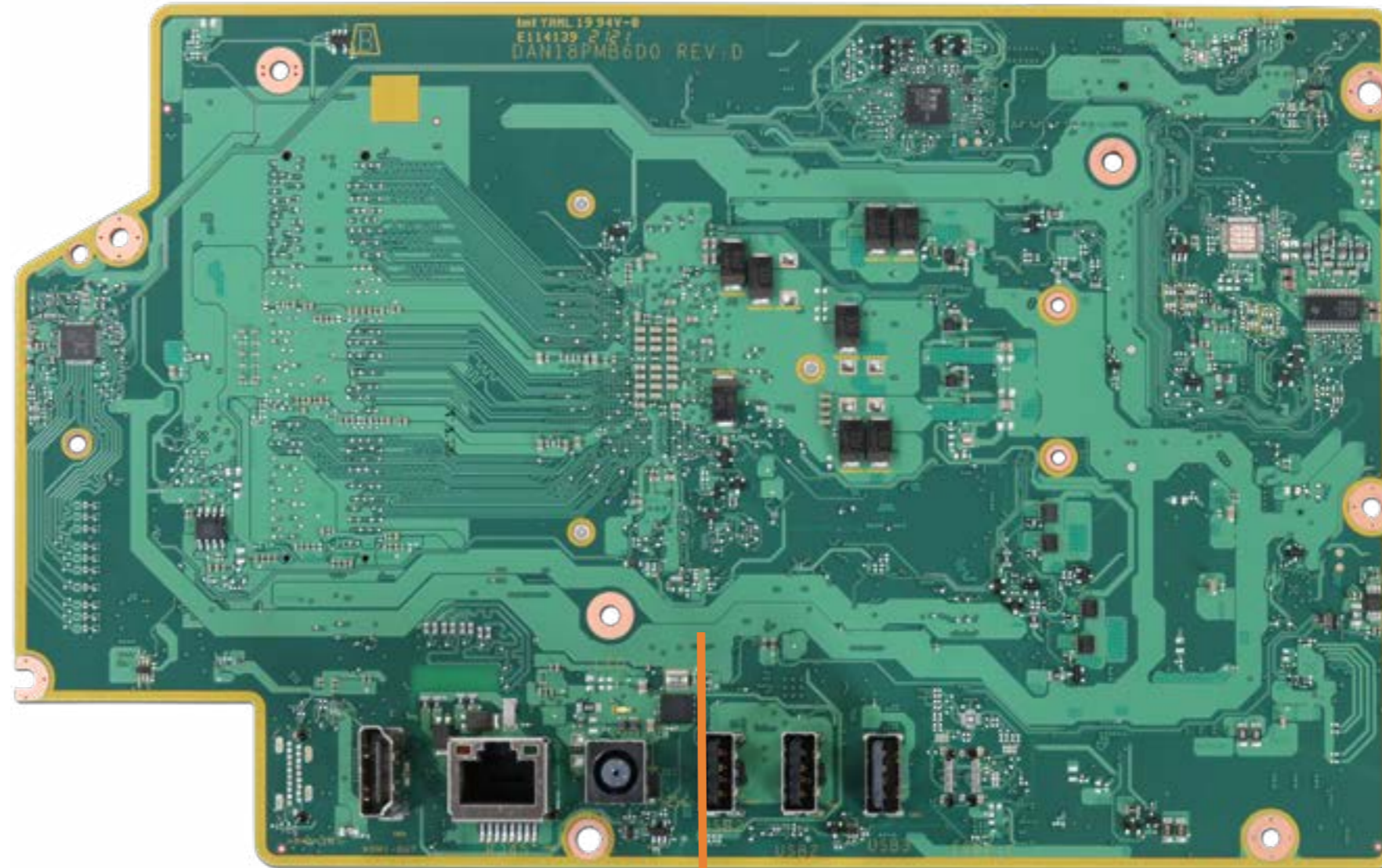
- Speaker Mesh
- Display Panel Assembly
- M.2 Solid State Drive
- Wireless LAN Module
- Memory module(s)
- Hard Disk Drive Assembly
- Hard Disk Drive Cable
- Speaker Assembly
- Power Button Board
- Power Button Board Cable
- Side I/O Board
- Side I/O Board Cable
- System Fan
- Heat Sink
- Motherboard with RTC Battery (Top)**
- Motherboard with RTC Battery (Bottom)
- Webcam Assembly
- Webcam Module
- Wireless Antennas
- Stand Base
- Stand Hinge
- Back Cover
- LVDS Cable
- Touch Control Cable
- Backlight Cable
- Display Panel Frame
- Display Panel



[Go to External Views](#)

# Motherboard with RTC Battery (Bottom)

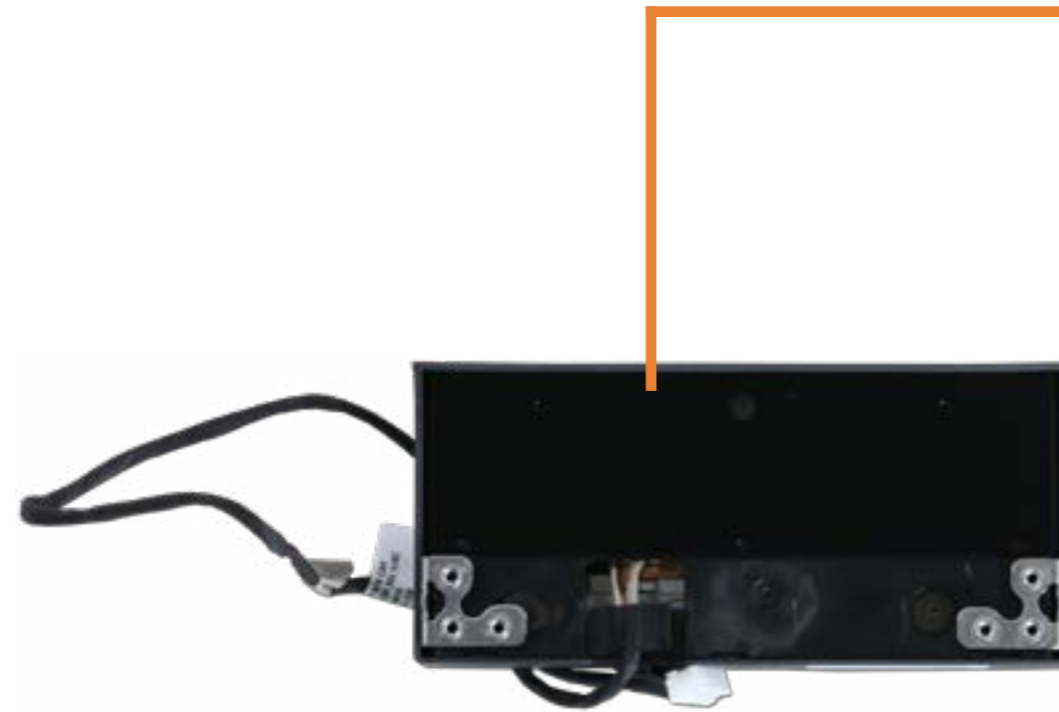
- Speaker Mesh
- Display Panel Assembly
- M.2 Solid State Drive
- Wireless LAN Module
- Memory module(s)
- Hard Disk Drive Assembly
- Hard Disk Drive Cable
- Speaker Assembly
- Power Button Board
- Power Button Board Cable
- Side I/O Board
- Side I/O Board Cable
- System Fan
- Heat Sink
- Motherboard with RTC Battery (Top)
- Motherboard with RTC Battery (Bottom)**
- Webcam Assembly
- Webcam Module
- Wireless Antennas
- Stand Base
- Stand Hinge
- Back Cover
- LVDS Cable
- Touch Control Cable
- Backlight Cable
- Display Panel Frame
- Display Panel



[Go to External Views](#)

# Webcam Assembly

- Speaker Mesh
- Display Panel Assembly
- M.2 Solid State Drive
- Wireless LAN Module
- Memory module(s)
- Hard Disk Drive Assembly
- Hard Disk Drive Cable
- Speaker Assembly
- Power Button Board
- Power Button Board Cable
- Side I/O Board
- Side I/O Board Cable
- System Fan
- Heat Sink
- Motherboard with RTC Battery (Top)
- Motherboard with RTC Battery (Bottom)
- Webcam Assembly**
- Webcam Module
- Wireless Antennas
- Stand Base
- Stand Hinge
- Back Cover
- LVDS Cable
- Touch Control Cable
- Backlight Cable
- Display Panel Frame
- Display Panel



[Go to External Views](#)

# Webcam Module

- Speaker Mesh
- Display Panel Assembly
- M.2 Solid State Drive
- Wireless LAN Module
- Memory module(s)
- Hard Disk Drive Assembly
- Hard Disk Drive Cable
- Speaker Assembly
- Power Button Board
- Power Button Board Cable
- Side I/O Board
- Side I/O Board Cable
- System Fan
- Heat Sink
- Motherboard with RTC Battery (Top)
- Motherboard with RTC Battery (Bottom)
- Webcam Assembly
- Webcam Module**
- Wireless Antennas
- Stand Base
- Stand Hinge
- Back Cover
- LVDS Cable
- Touch Control Cable
- Backlight Cable
- Display Panel Frame
- Display Panel



[Go to External Views](#)

# Wireless Antennas

- Speaker Mesh
- Display Panel Assembly
- M.2 Solid State Drive
- Wireless LAN Module
- Memory module(s)
- Hard Disk Drive Assembly
- Hard Disk Drive Cable
- Speaker Assembly
- Power Button Board
- Power Button Board Cable
- Side I/O Board
- Side I/O Board Cable
- System Fan
- Heat Sink
- Motherboard with RTC Battery (Top)
- Motherboard with RTC Battery (Bottom)
- Webcam Assembly
- Webcam Module
- Wireless Antennas**
- Stand Base
- Stand Hinge
- Back Cover
- LVDS Cable
- Touch Control Cable
- Backlight Cable
- Display Panel Frame
- Display Panel



[Go to External Views](#)

# Stand Base

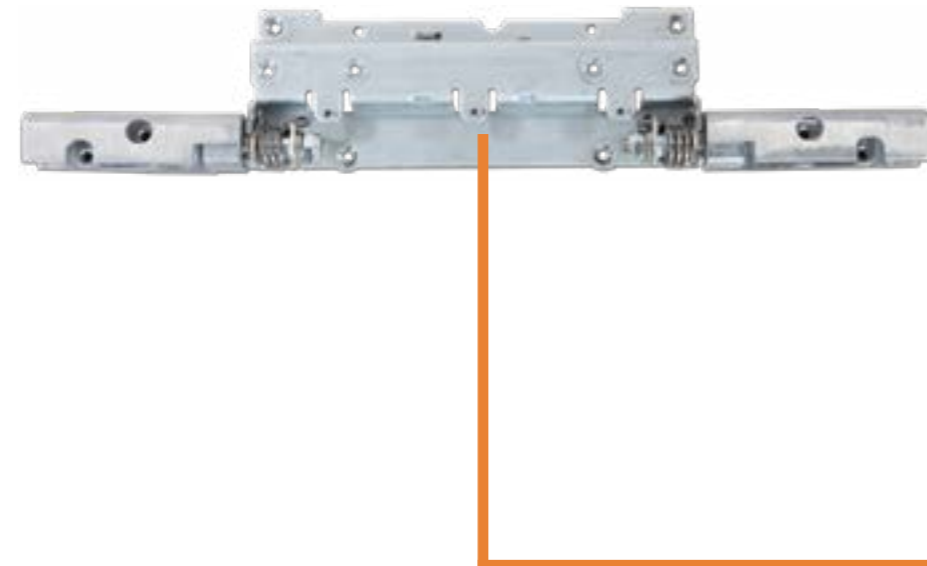
- Speaker Mesh
- Display Panel Assembly
- M.2 Solid State Drive
- Wireless LAN Module
- Memory module(s)
- Hard Disk Drive Assembly
- Hard Disk Drive Cable
- Speaker Assembly
- Power Button Board
- Power Button Board Cable
- Side I/O Board
- Side I/O Board Cable
- System Fan
- Heat Sink
- Motherboard with RTC Battery (Top)
- Motherboard with RTC Battery (Bottom)
- Webcam Assembly
- Webcam Module
- Wireless Antennas
- Stand Base**
- Stand Hinge
- Back Cover
- LVDS Cable
- Touch Control Cable
- Backlight Cable
- Display Panel Frame
- Display Panel



[Go to External Views](#)

# Stand Hinge

- Speaker Mesh
- Display Panel Assembly
- M.2 Solid State Drive
- Wireless LAN Module
- Memory module(s)
- Hard Disk Drive Assembly
- Hard Disk Drive Cable
- Speaker Assembly
- Power Button Board
- Power Button Board Cable
- Side I/O Board
- Side I/O Board Cable
- System Fan
- Heat Sink
- Motherboard with RTC Battery (Top)
- Motherboard with RTC Battery (Bottom)
- Webcam Assembly
- Webcam Module
- Wireless Antennas
- Stand Base
- Stand Hinge**
- Back Cover
- LVDS Cable
- Touch Control Cable
- Backlight Cable
- Display Panel Frame
- Display Panel



[Go to External Views](#)

# Back Cover

- Speaker Mesh
- Display Panel Assembly
- M.2 Solid State Drive
- Wireless LAN Module
- Memory module(s)
- Hard Disk Drive Assembly
- Hard Disk Drive Cable
- Speaker Assembly
- Power Button Board
- Power Button Board Cable
- Side I/O Board
- Side I/O Board Cable
- System Fan
- Heat Sink
- Motherboard with RTC Battery (Top)
- Motherboard with RTC Battery (Bottom)
- Webcam Assembly
- Webcam Module
- Wireless Antennas
- Stand Base
- Stand Hinge
- Back Cover**
- LVDS Cable
- Touch Control Cable
- Backlight Cable
- Display Panel Frame
- Display Panel

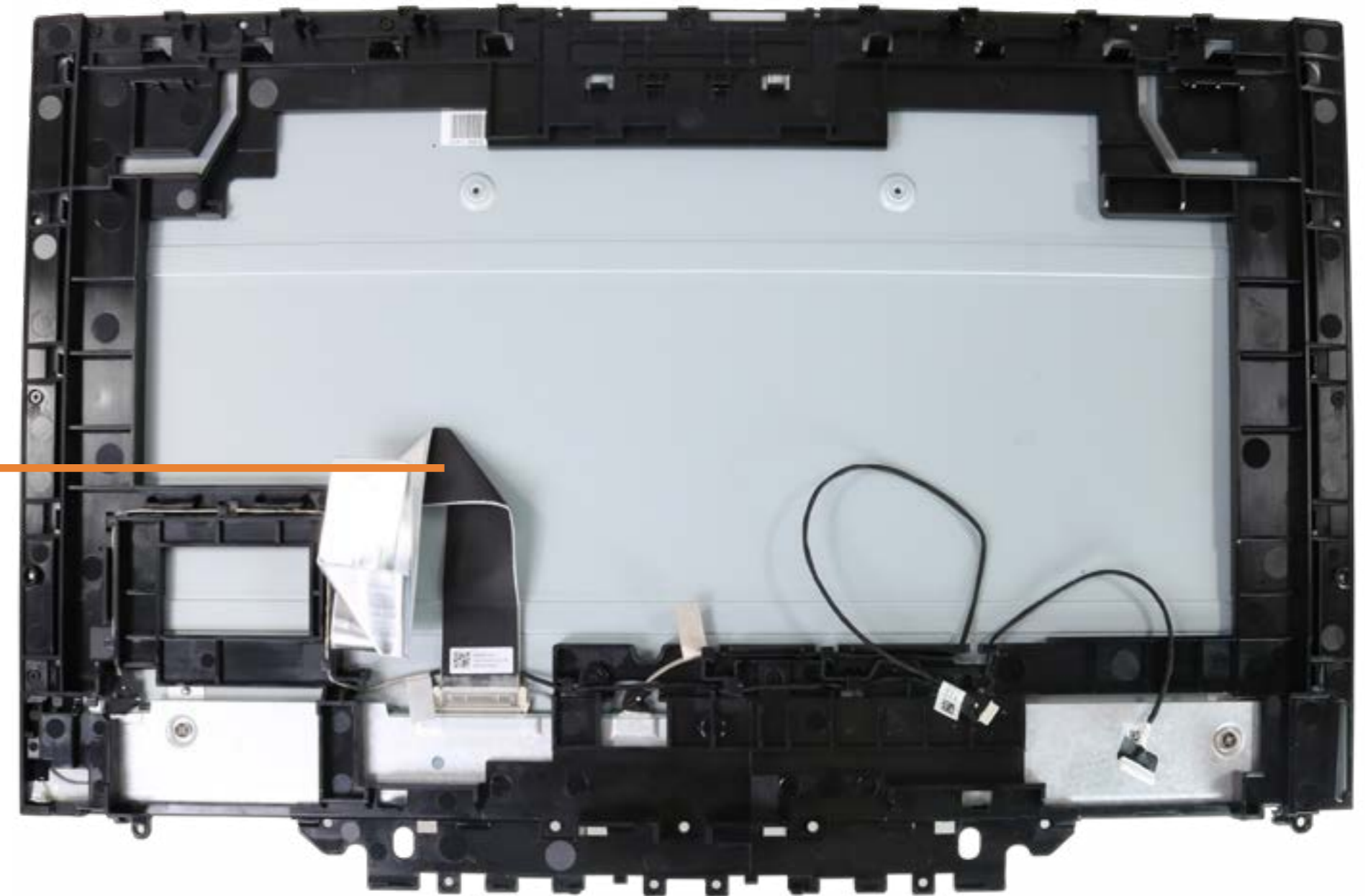


[Go to External Views](#)



# LVDS Cable

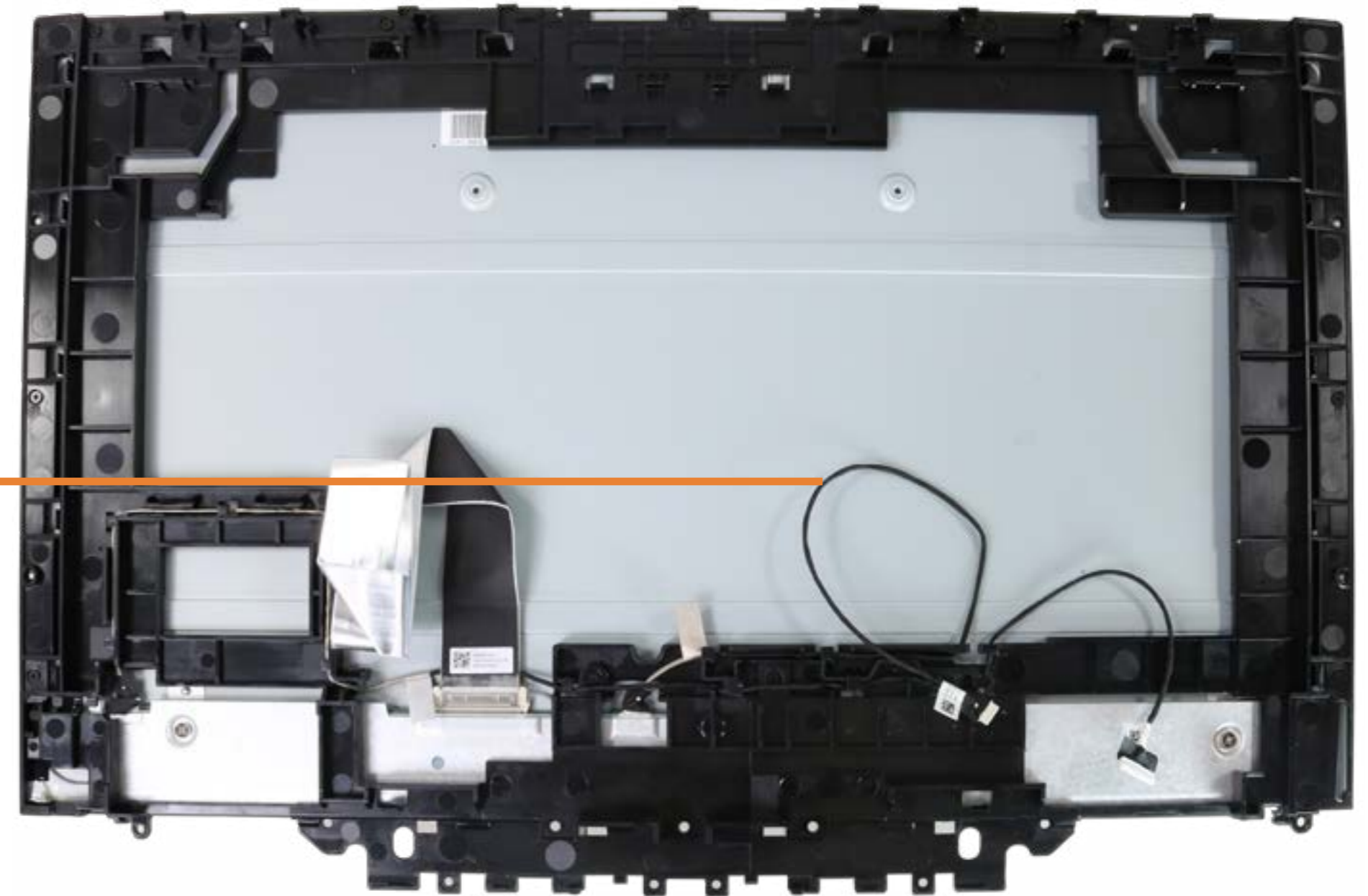
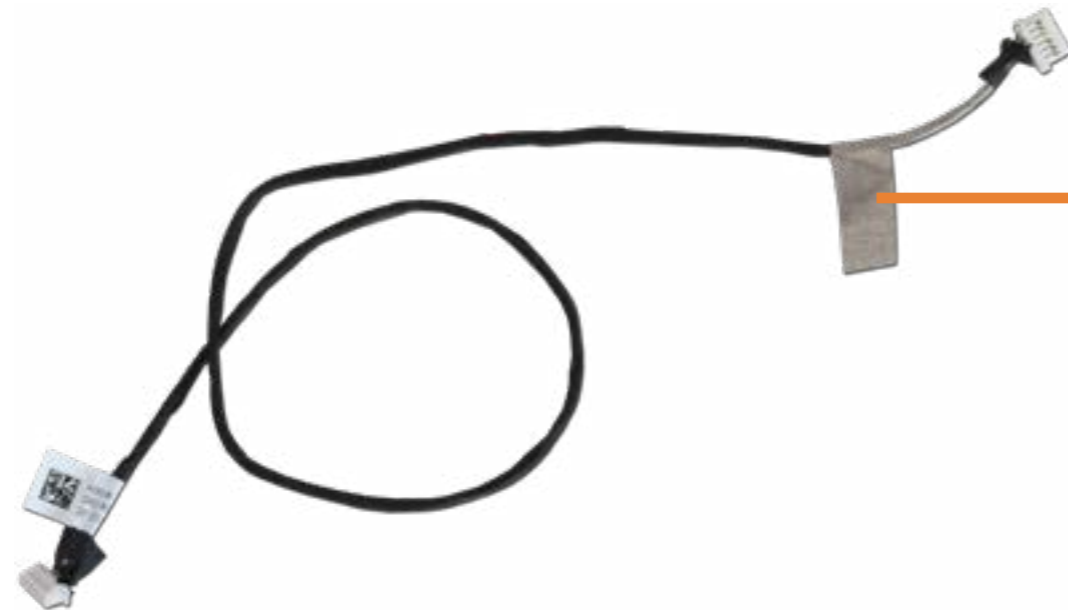
- Speaker Mesh
- Display Panel Assembly
- M.2 Solid State Drive
- Wireless LAN Module
- Memory module(s)
- Hard Disk Drive Assembly
- Hard Disk Drive Cable
- Speaker Assembly
- Power Button Board
- Power Button Board Cable
- Side I/O Board
- Side I/O Board Cable
- System Fan
- Heat Sink
- Motherboard with RTC Battery (Top)
- Motherboard with RTC Battery (Bottom)
- Webcam Assembly
- Webcam Module
- Wireless Antennas
- Stand Base
- Stand Hinge
- Back Cover
- LVDS Cable**
- Touch Control Cable
- Backlight Cable
- Display Panel Frame
- Display Panel



[Go to External Views](#)

# Touch Control Cable

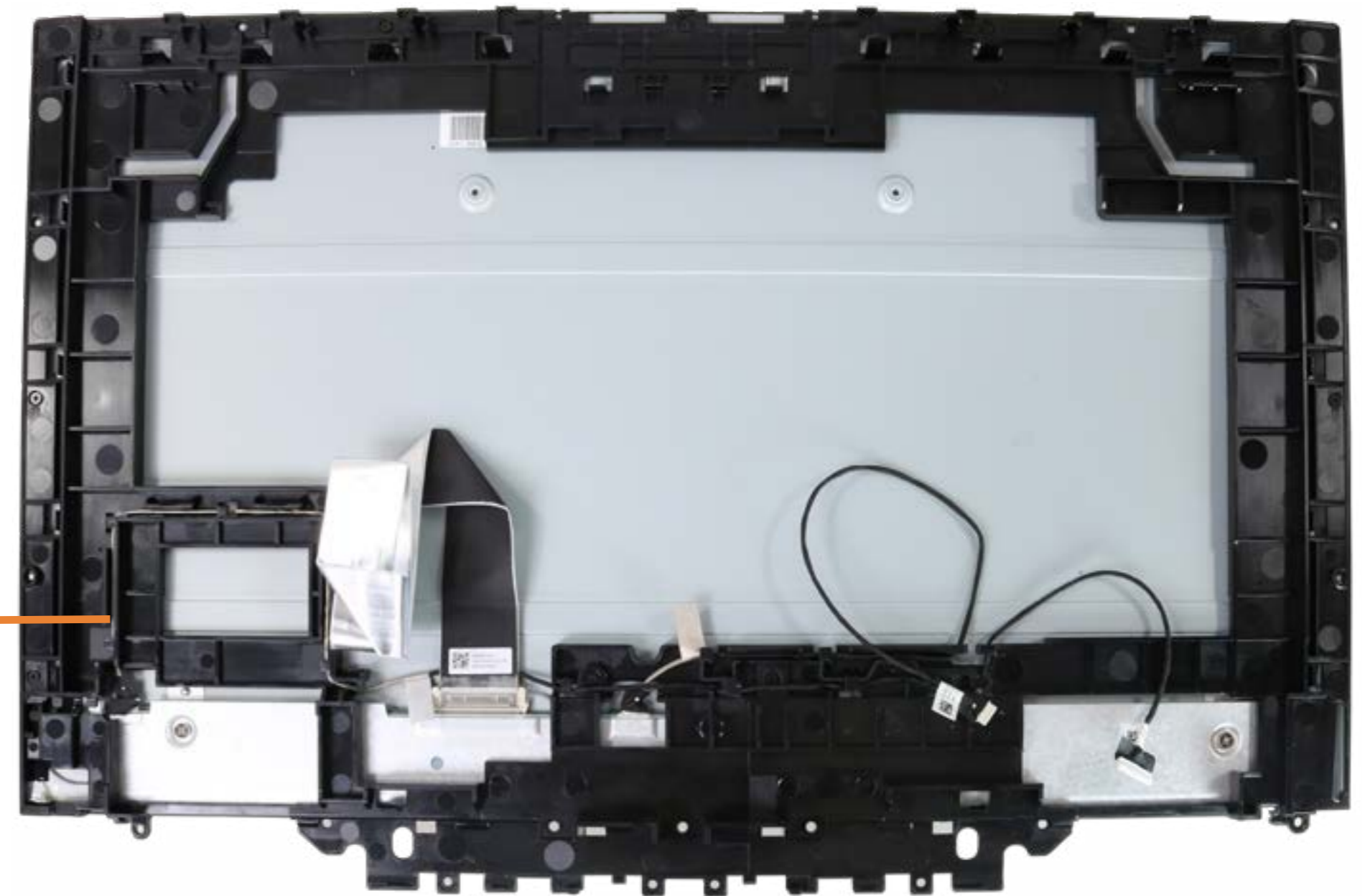
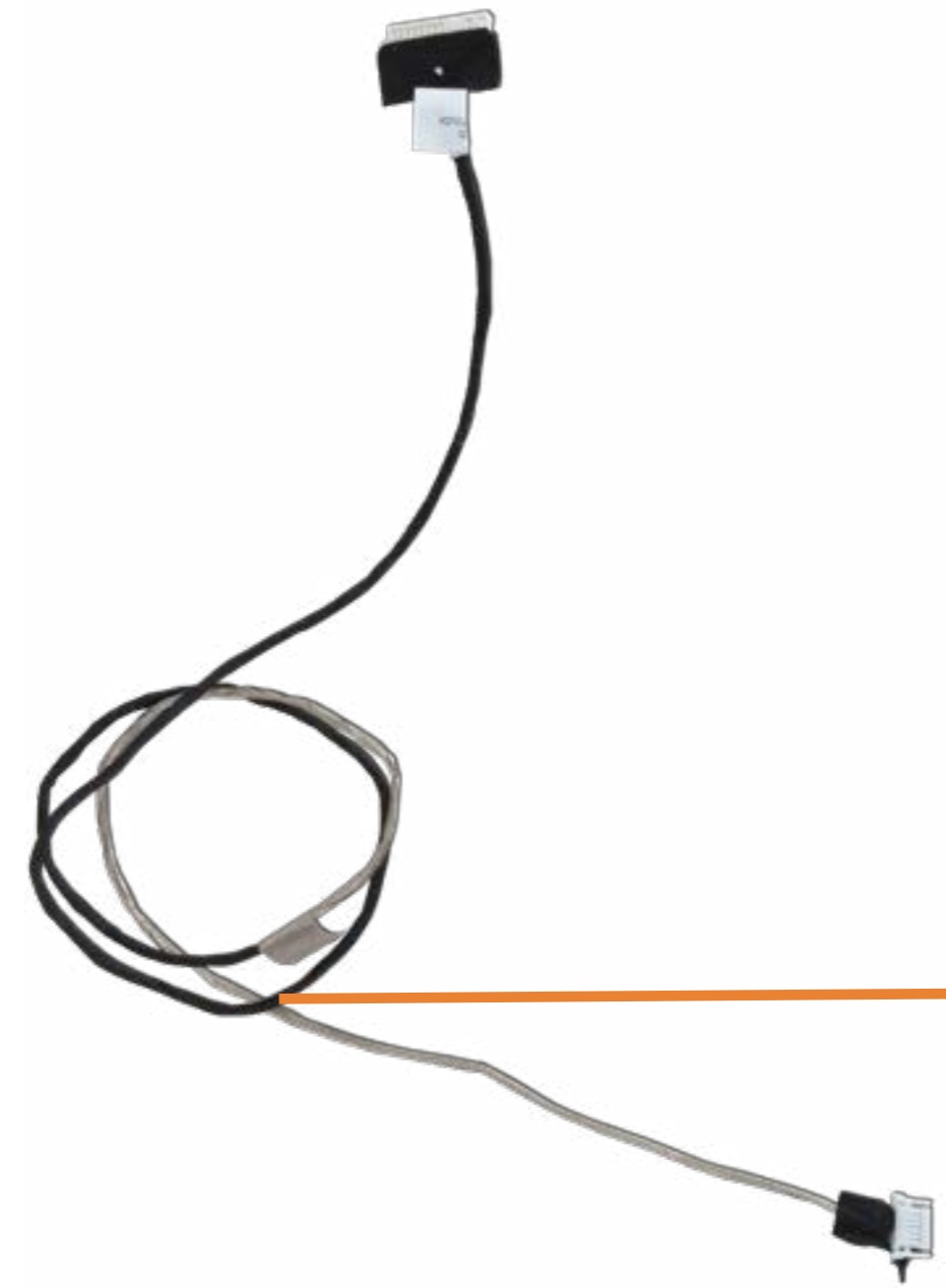
- Speaker Mesh
- Display Panel Assembly
- M.2 Solid State Drive
- Wireless LAN Module
- Memory module(s)
- Hard Disk Drive Assembly
- Hard Disk Drive Cable
- Speaker Assembly
- Power Button Board
- Power Button Board Cable
- Side I/O Board
- Side I/O Board Cable
- System Fan
- Heat Sink
- Motherboard with RTC Battery (Top)
- Motherboard with RTC Battery (Bottom)
- Webcam Assembly
- Webcam Module
- Wireless Antennas
- Stand Base
- Stand Hinge
- Back Cover
- LVDS Cable
- Touch Control Cable**
- Backlight Cable
- Display Panel Frame
- Display Panel



[Go to External Views](#)

# Backlight Cable

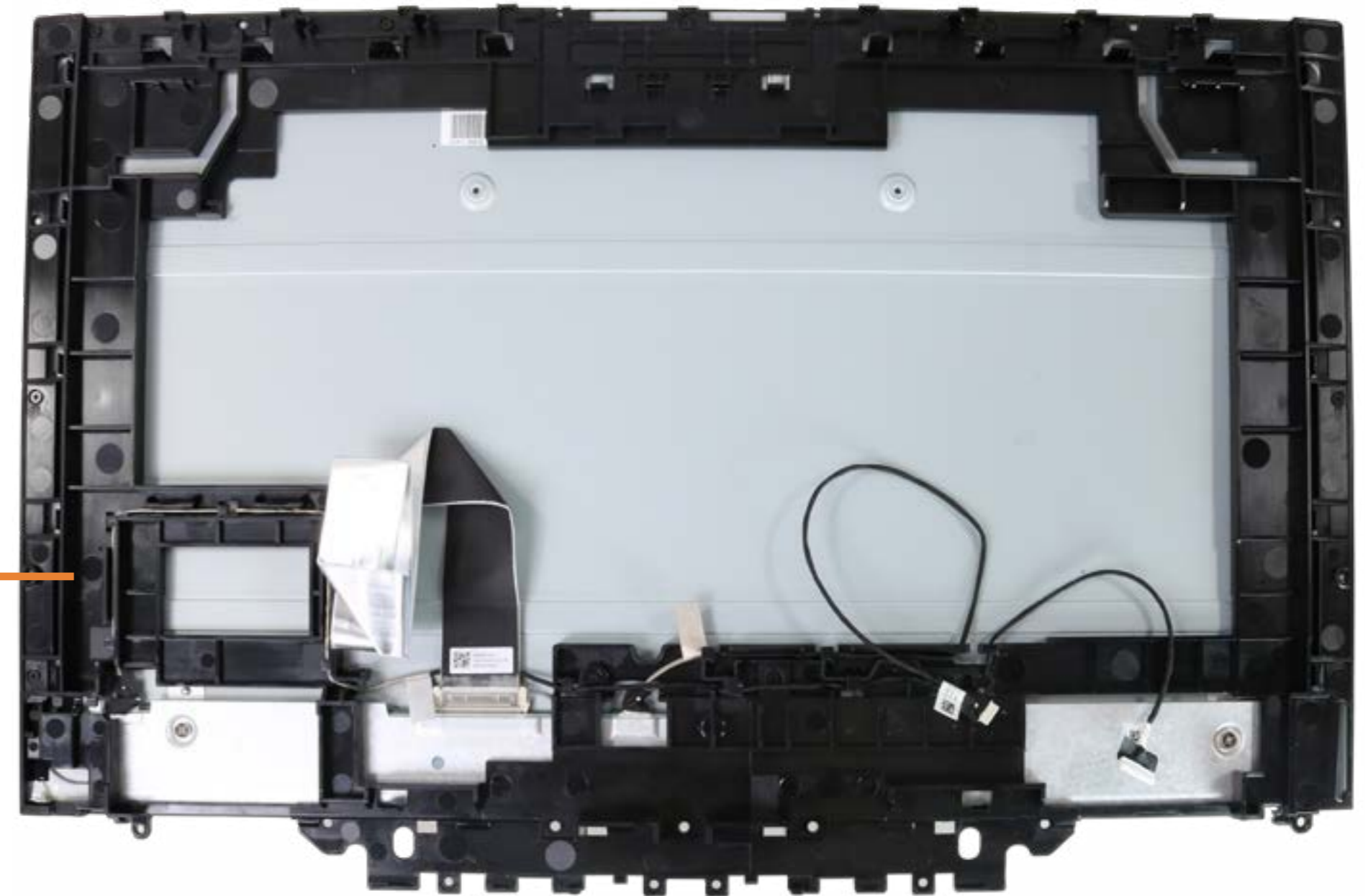
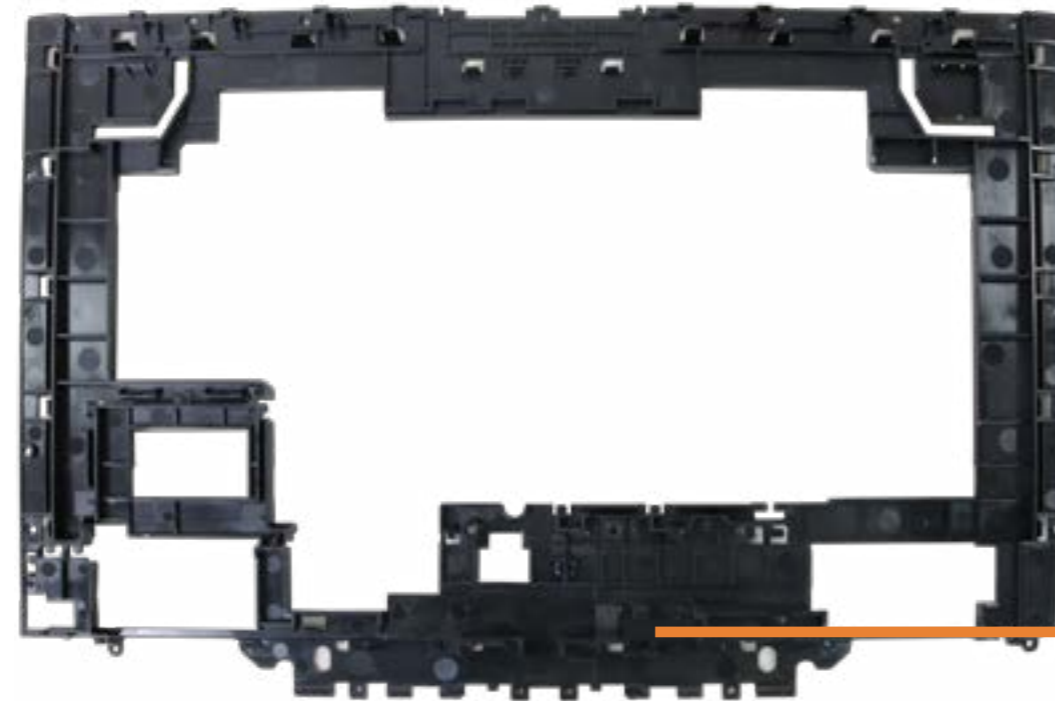
- Speaker Mesh
- Display Panel Assembly
- M.2 Solid State Drive
- Wireless LAN Module
- Memory module(s)
- Hard Disk Drive Assembly
- Hard Disk Drive Cable
- Speaker Assembly
- Power Button Board
- Power Button Board Cable
- Side I/O Board
- Side I/O Board Cable
- System Fan
- Heat Sink
- Motherboard with RTC Battery (Top)
- Motherboard with RTC Battery (Bottom)
- Webcam Assembly
- Webcam Module
- Wireless Antennas
- Stand Base
- Stand Hinge
- Back Cover
- LVDS Cable
- Touch Control Cable
- Backlight Cable**
- Display Panel Frame
- Display Panel



[Go to External Views](#)

# Display Panel Frame

- Speaker Mesh
- Display Panel Assembly
- M.2 Solid State Drive
- Wireless LAN Module
- Memory module(s)
- Hard Disk Drive Assembly
- Hard Disk Drive Cable
- Speaker Assembly
- Power Button Board
- Power Button Board Cable
- Side I/O Board
- Side I/O Board Cable
- System Fan
- Heat Sink
- Motherboard with RTC Battery (Top)
- Motherboard with RTC Battery (Bottom)
- Webcam Assembly
- Webcam Module
- Wireless Antennas
- Stand Base
- Stand Hinge
- Back Cover
- LVDS Cable
- Touch Control Cable
- Backlight Cable
- Display Panel Frame**
- Display Panel



[Go to External Views](#)

# Display Panel

- Speaker Mesh
- Display Panel Assembly
- M.2 Solid State Drive
- Wireless LAN Module
- Memory module(s)
- Hard Disk Drive Assembly
- Hard Disk Drive Cable
- Speaker Assembly
- Power Button Board
- Power Button Board Cable
- Side I/O Board
- Side I/O Board Cable
- System Fan
- Heat Sink
- Motherboard with RTC Battery (Top)
- Motherboard with RTC Battery (Bottom)
- Webcam Assembly
- Webcam Module
- Wireless Antennas
- Stand Base
- Stand Hinge
- Back Cover
- LVDS Cable
- Touch Control Cable
- Backlight Cable
- Display Panel Frame
- Display Panel**



[Go to External Views](#)