

Interactive Part Locator

HP 27-inch All-in-One Desktop PC Series

Welcome to the interactive part locator for the
HP 27-inch All-in-One Desktop PC Series

Here's how to use it...

[External Views](#) (Click the link to navigate to the views)

On this page you will find large icons of each of the external views of this product. To view a specific view in greater detail, simply click that view.

[Parts List](#) (Click the link to navigate to the parts)

On this page, you will find a list of all of the replaceable parts for this product. To view a specific part and its location in the product, click the part name in the list.

That's it! On every page there is a link that brings you back to either the External Views or the Parts List, enabling you to navigate to whatever view or part you wish to review.

 To exit or enter full screen mode, press Ctrl + L on your keyboard

External Views

[Back to Welcome page](#)



Front



Left



Right



Rear



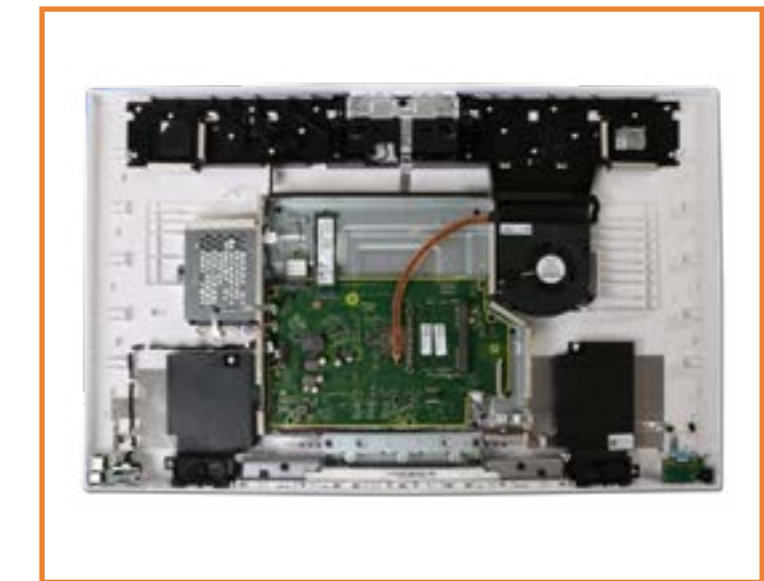
Display



Top



Bottom

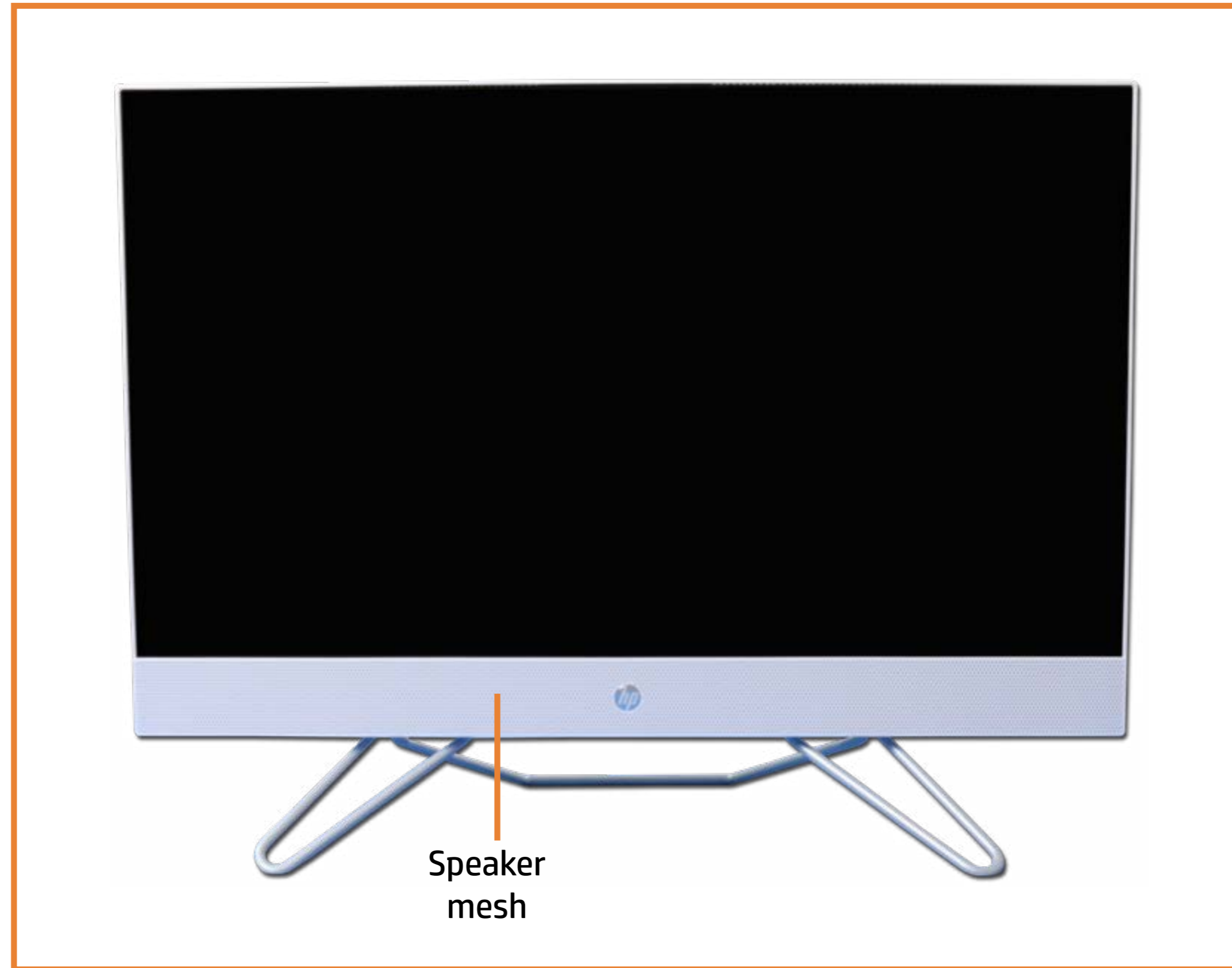


Internal

[Go to Parts List](#)

Front View

[Back to External Views](#)



Speaker
mesh

[Go to Parts List](#)

Left View

[Back to External Views](#)



[Go to Parts List](#)

Right View

[Back to External Views](#)



[Go to Parts List](#)

Rear View

[Back to External Views](#)



HP logo

HDMI out port

Kensington MicroSaver Lock

RJ-45 (Ethernet) port

AC adapter port

Power button

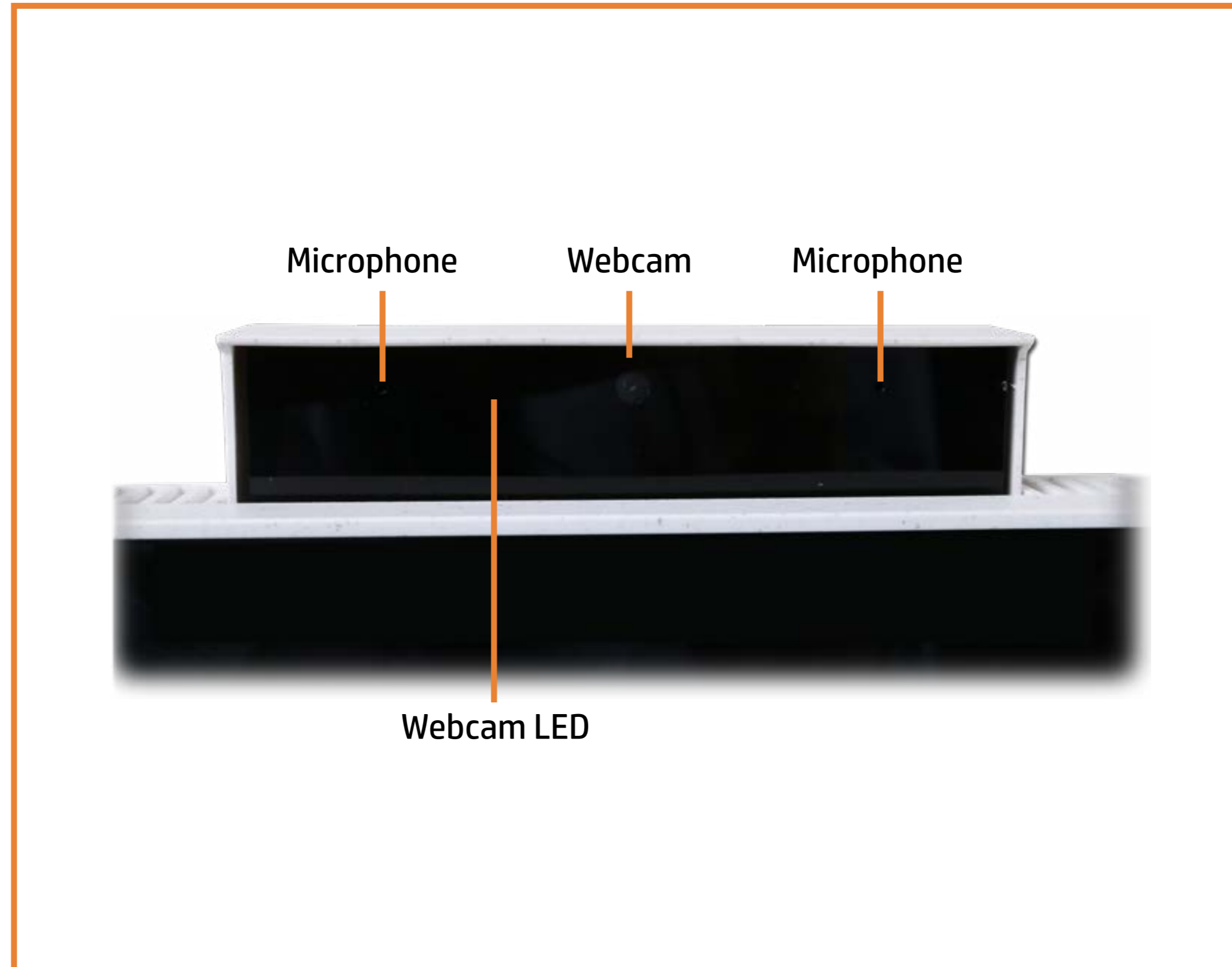
USB-A 3.2 Gen 1 port

USB-A 2.0 ports

[Go to Parts List](#)

Display View

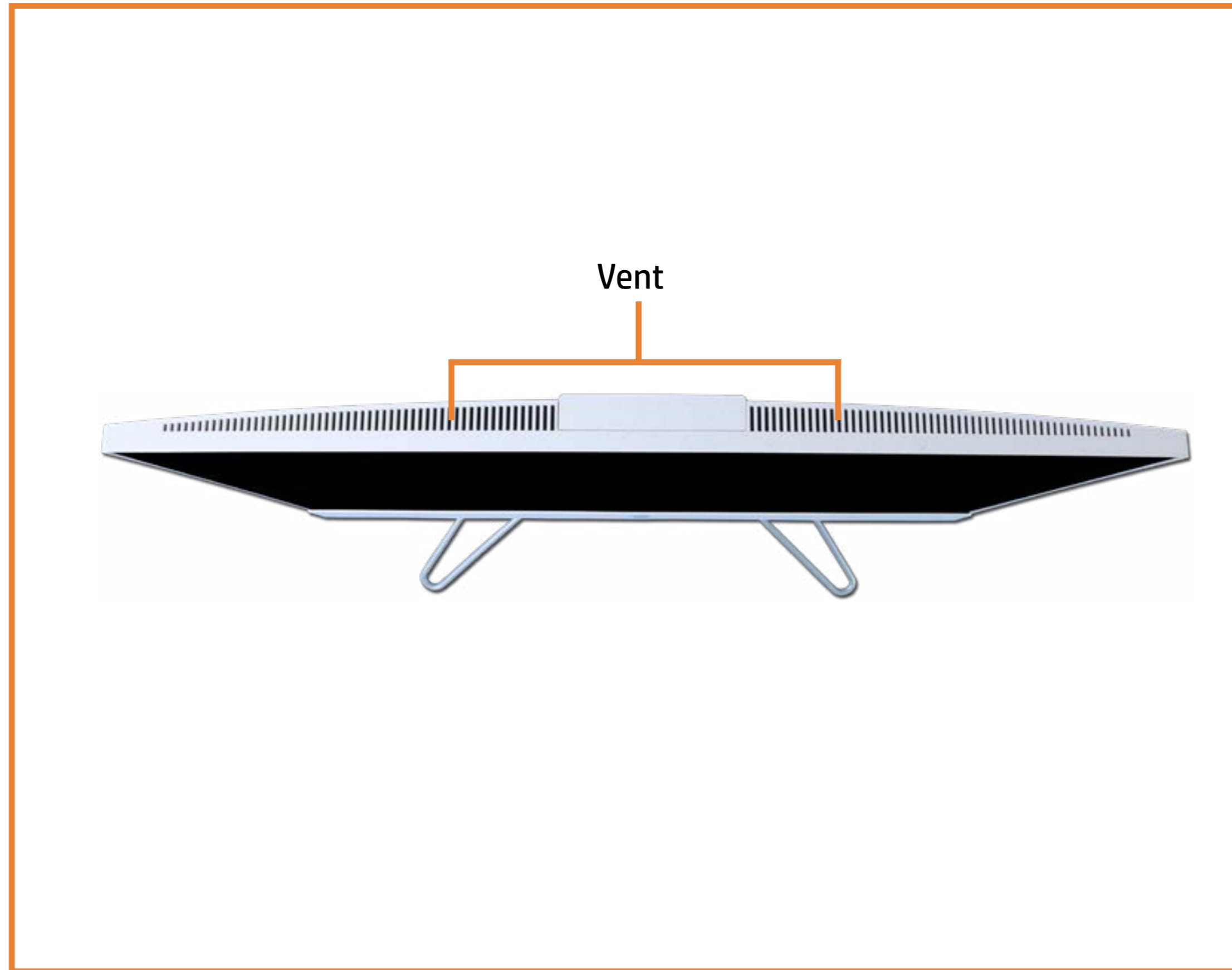
[Back to External Views](#)



[Go to Parts List](#)

Top View

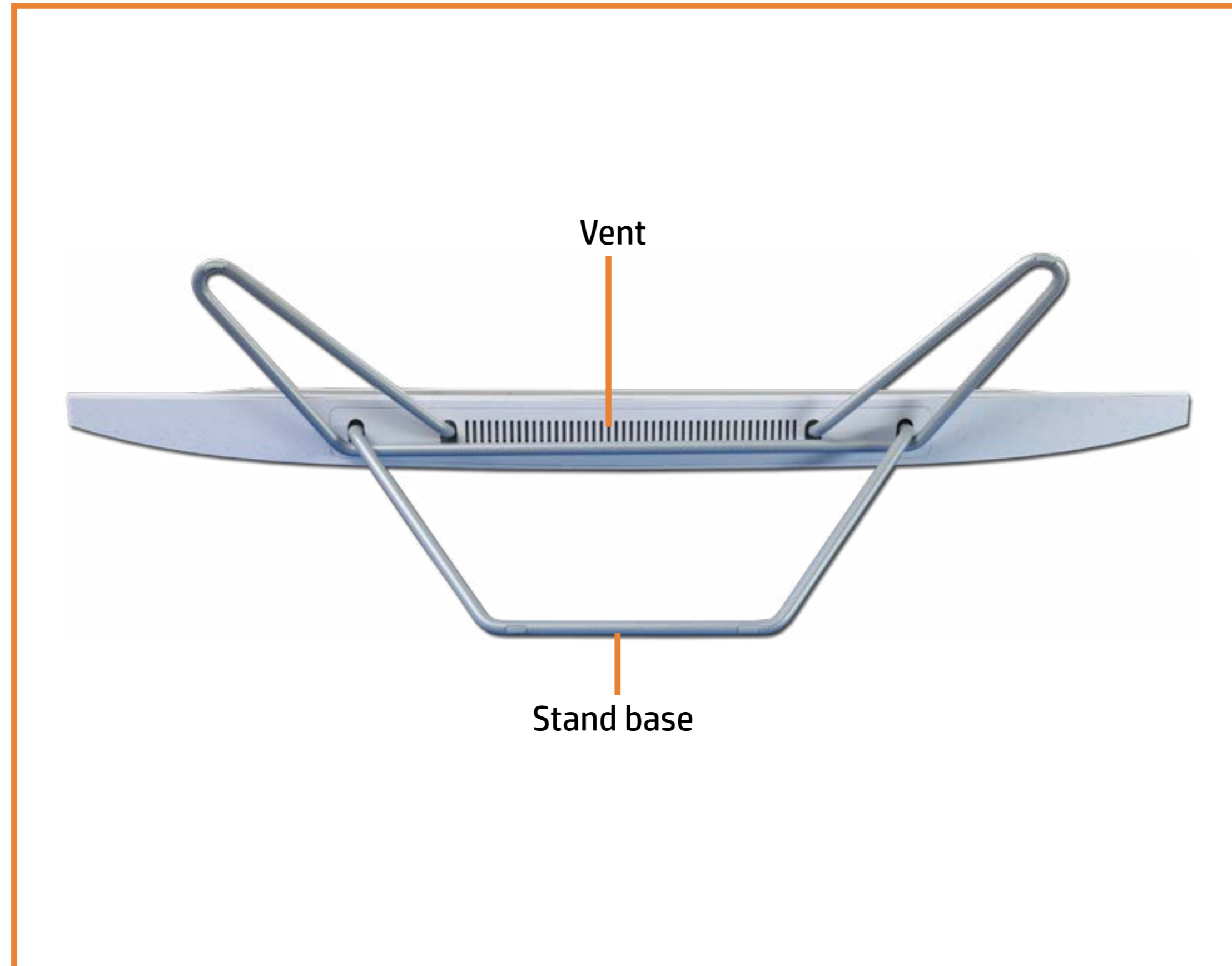
[Back to External Views](#)



[Go to Parts List](#)

Bottom View

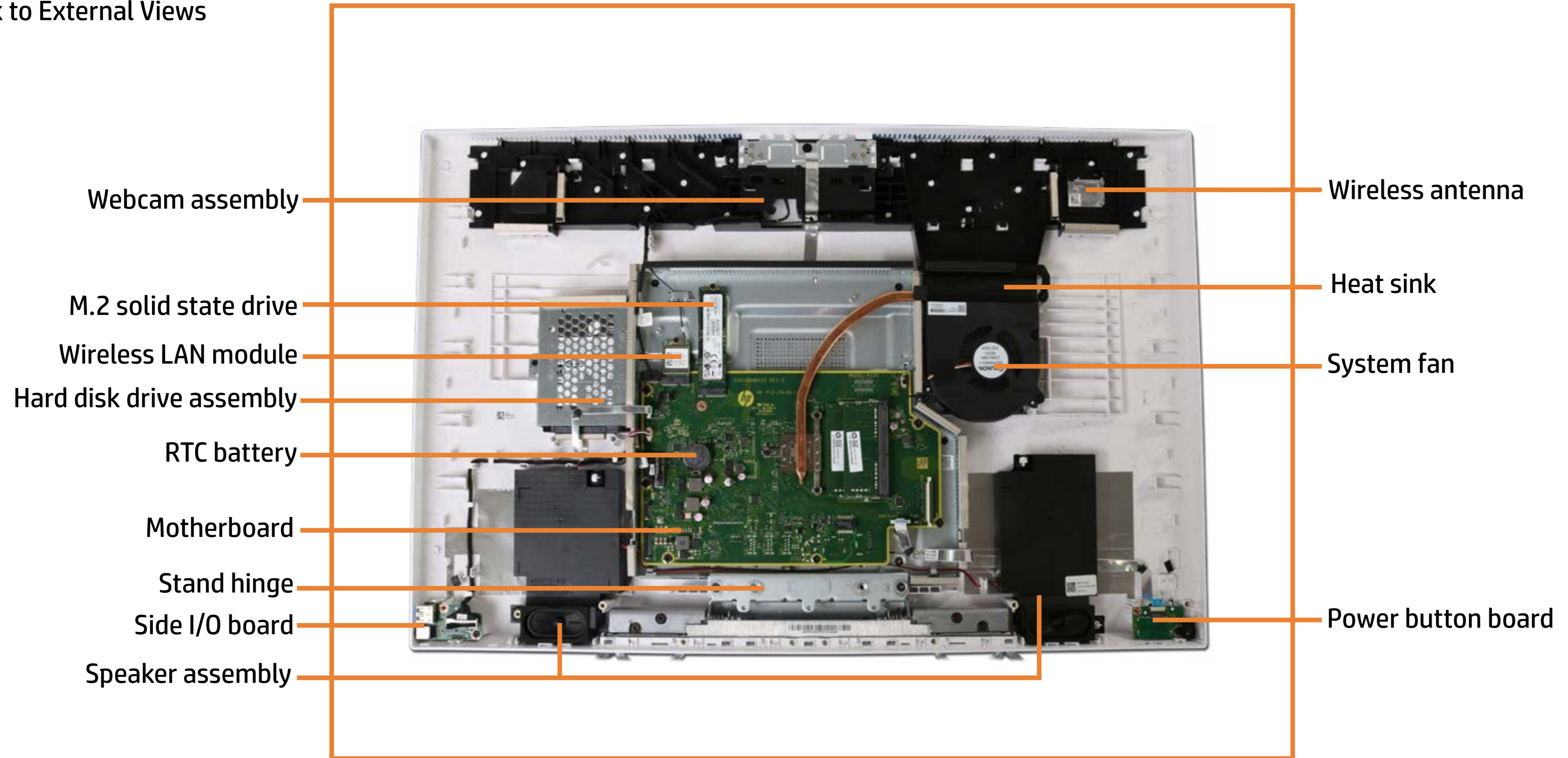
[Back to External Views](#)



[Go to Parts List](#)

Internal View

[Back to External Views](#)

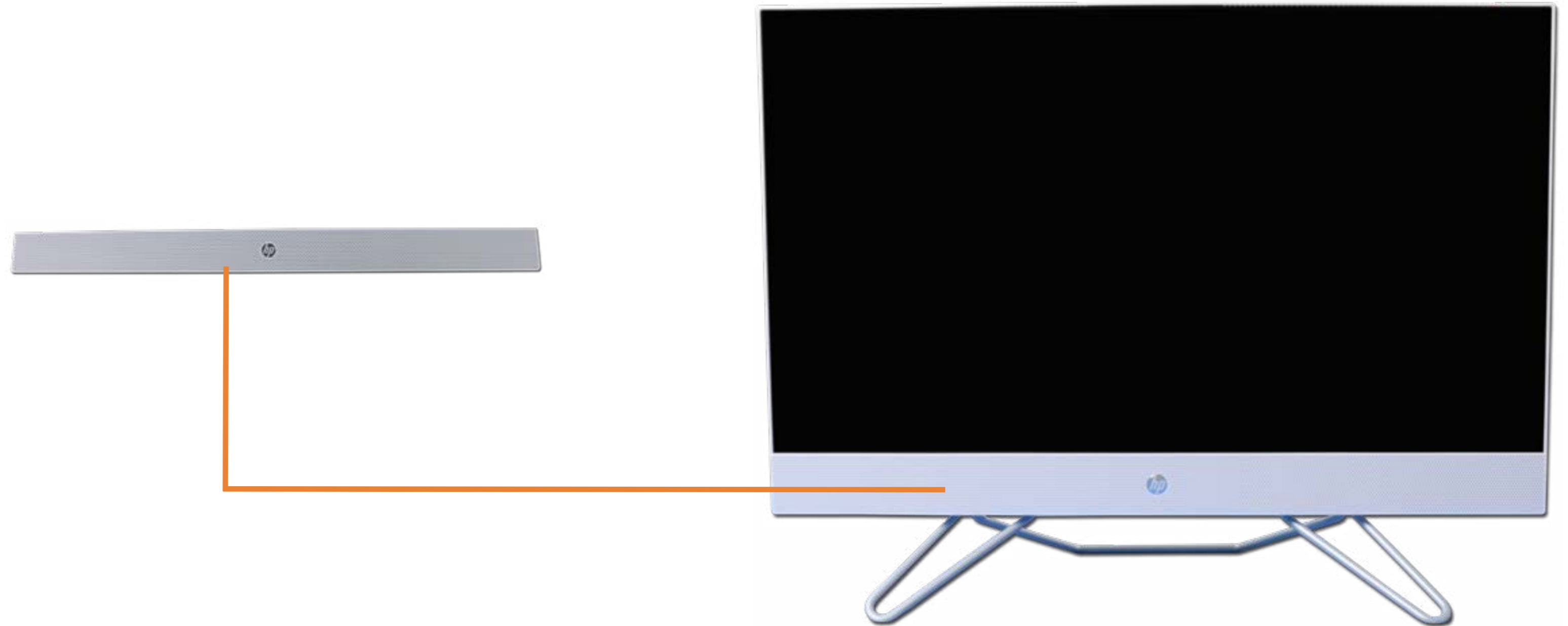


[Go to Parts List](#)

Speaker Mesh

Speaker Mesh

- Display Panel Assembly
- M.2 Solid State Drive
- Wireless LAN Module
- Memory Module (s)
- Hard Disk Drive Assembly
- Hard Disk Drive Cable
- Speaker Assembly
- Power Button Board
- Power Button Board Cable
- Side I/O Board
- Side I/O Board Cable
- System Fan
- Heat Sink
- Motherboard with RTC Battery (Top)
- Motherboard with RTC Battery (Bottom)
- Webcam Assembly
- Webcam Module
- Wireless Antenna
- Stand Base
- Stand Hinge
- Back Cover
- LVDS Cable
- Touch Control Cable
- Backlight Cable
- Touch Control Board
- Display Panel Frame
- Display Panel



[Go to External Views](#)

Display Panel Assembly

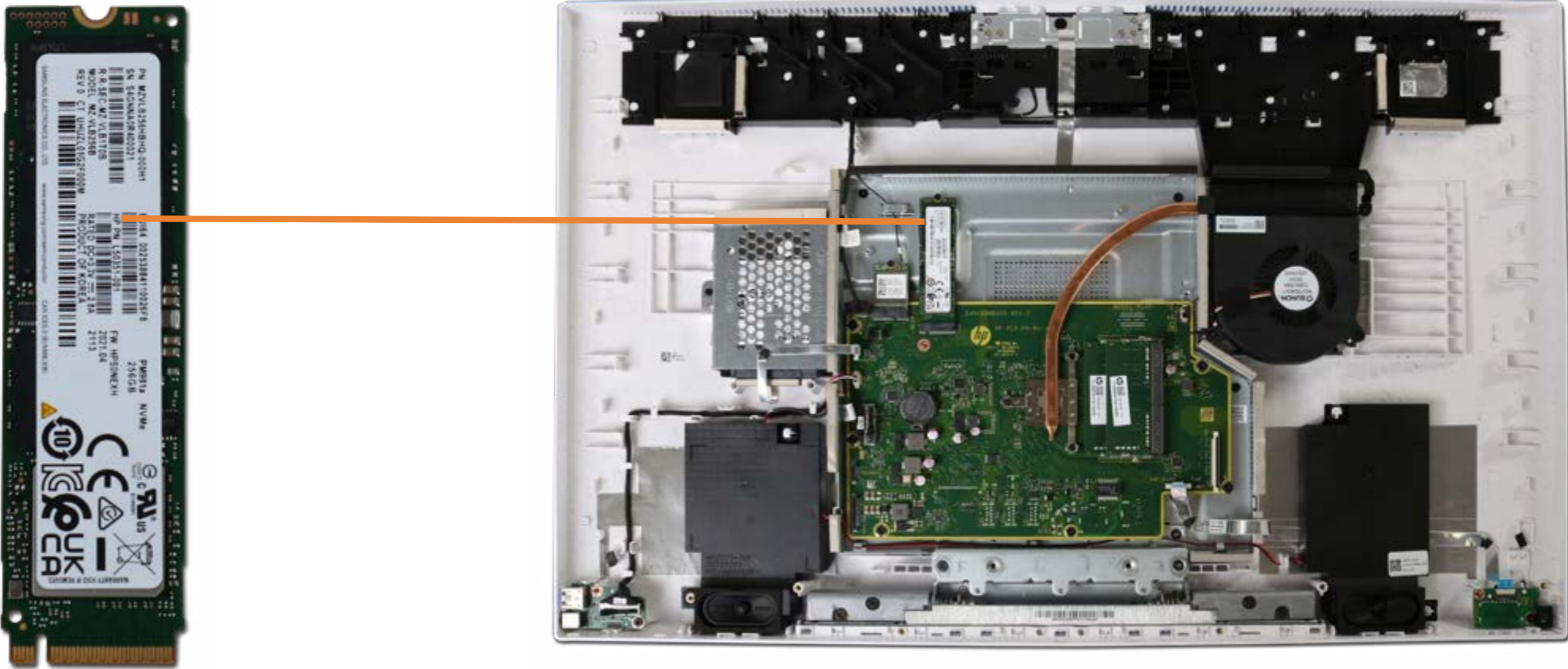
- Speaker Mesh
- Display Panel Assembly**
- M.2 Solid State Drive
- Wireless LAN Module
- Memory Module (s)
- Hard Disk Drive Assembly
- Hard Disk Drive Cable
- Speaker Assembly
- Power Button Board
- Power Button Board Cable
- Side I/O Board
- Side I/O Board Cable
- System Fan
- Heat Sink
- Motherboard with RTC Battery (Top)
- Motherboard with RTC Battery (Bottom)
- Webcam Assembly
- Webcam Module
- Wireless Antenna
- Stand Base
- Stand Hinge
- Back Cover
- LVDS Cable
- Touch Control Cable
- Backlight Cable
- Touch Control Board
- Display Panel Frame
- Display Panel



[Go to External Views](#)

M.2 Solid State Drive

- Speaker Mesh
- Display Panel Assembly
- M.2 Solid State Drive**
- Wireless LAN Module
- Memory Module (s)
- Hard Disk Drive Assembly
- Hard Disk Drive Cable
- Speaker Assembly
- Power Button Board
- Power Button Board Cable
- Side I/O Board
- Side I/O Board Cable
- System Fan
- Heat Sink
- Motherboard with RTC Battery (Top)
- Motherboard with RTC Battery (Bottom)
- Webcam Assembly
- Webcam Module
- Wireless Antenna
- Stand Base
- Stand Hinge
- Back Cover
- LVDS Cable
- Touch Control Cable
- Backlight Cable
- Touch Control Board
- Display Panel Frame
- Display Panel



[Go to External Views](#)

Wireless LAN Module

- Speaker Mesh
- Display Panel Assembly
- M.2 Solid State Drive
- Wireless LAN Module**
- Memory Module (s)
- Hard Disk Drive Assembly
- Hard Disk Drive Cable
- Speaker Assembly
- Power Button Board
- Power Button Board Cable
- Side I/O Board
- Side I/O Board Cable
- System Fan
- Heat Sink
- Motherboard with RTC Battery (Top)
- Motherboard with RTC Battery (Bottom)
- Webcam Assembly
- Webcam Module
- Wireless Antenna
- Stand Base
- Stand Hinge
- Back Cover
- LVDS Cable
- Touch Control Cable
- Backlight Cable
- Touch Control Board
- Display Panel Frame
- Display Panel



[Go to External Views](#)

Memory Module (s)

- Speaker Mesh
- Display Panel Assembly
- M.2 Solid State Drive
- Wireless LAN Module
- Memory Module (s)**
- Hard Disk Drive Assembly
- Hard Disk Drive Cable
- Speaker Assembly
- Power Button Board
- Power Button Board Cable
- Side I/O Board
- Side I/O Board Cable
- System Fan
- Heat Sink
- Motherboard with RTC Battery (Top)
- Motherboard with RTC Battery (Bottom)
- Webcam Assembly
- Webcam Module
- Wireless Antenna
- Stand Base
- Stand Hinge
- Back Cover
- LVDS Cable
- Touch Control Cable
- Backlight Cable
- Touch Control Board
- Display Panel Frame
- Display Panel



[Go to External Views](#)

Hard Disk Drive Assembly

- Speaker Mesh
- Display Panel Assembly
- M.2 Solid State Drive
- Wireless LAN Module
- Memory Module (s)
- Hard Disk Drive Assembly**
- Hard Disk Drive Cable
- Speaker Assembly
- Power Button Board
- Power Button Board Cable
- Side I/O Board
- Side I/O Board Cable
- System Fan
- Heat Sink
- Motherboard with RTC Battery (Top)
- Motherboard with RTC Battery (Bottom)
- Webcam Assembly
- Webcam Module
- Wireless Antenna
- Stand Base
- Stand Hinge
- Back Cover
- LVDS Cable
- Touch Control Cable
- Backlight Cable
- Touch Control Board
- Display Panel Frame
- Display Panel



[Go to External Views](#)

Hard Disk Drive Cable

- Speaker Mesh
- Display Panel Assembly
- M.2 Solid State Drive
- Wireless LAN Module
- Memory Module(s)
- Hard Disk Drive Assembly

Hard Disk Drive Cable

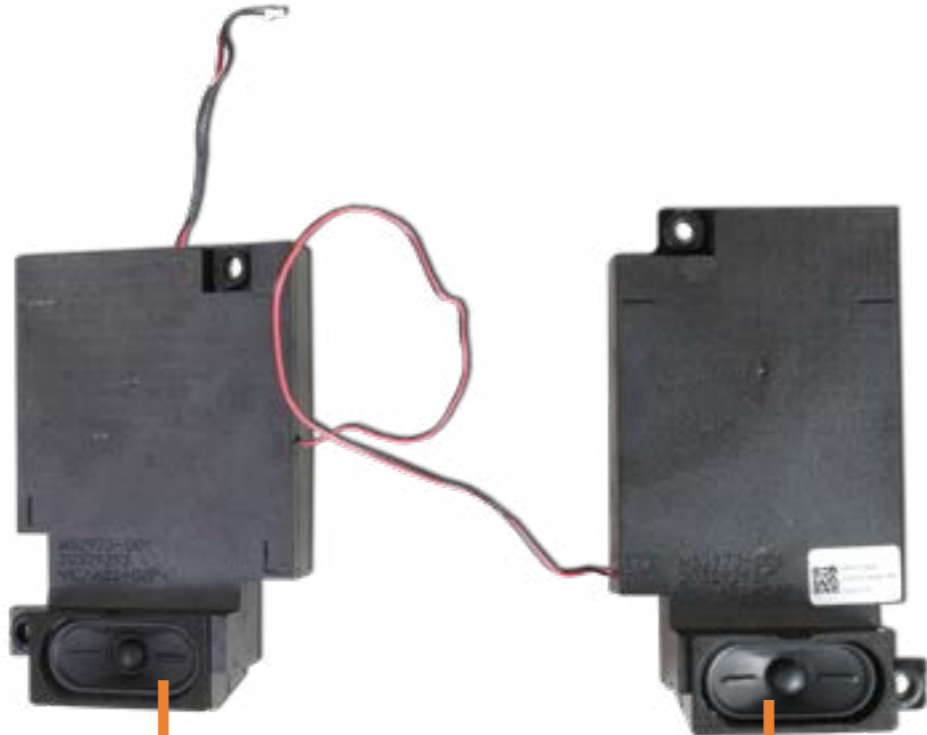
- Speaker Assembly
- Power Button Board
- Power Button Board Cable
- Side I/O Board
- Side I/O Board Cable
- System Fan
- Heat Sink
- Motherboard with RTC Battery (Top)
- Motherboard with RTC Battery (Bottom)
- Webcam Assembly
- Webcam Module
- Wireless Antenna
- Stand Base
- Stand Hinge
- Back Cover
- LVDS Cable
- Touch Control Cable
- Backlight Cable
- Touch Control Board
- Display Panel Frame
- Display Panel



[Go to External Views](#)

Speaker Assembly

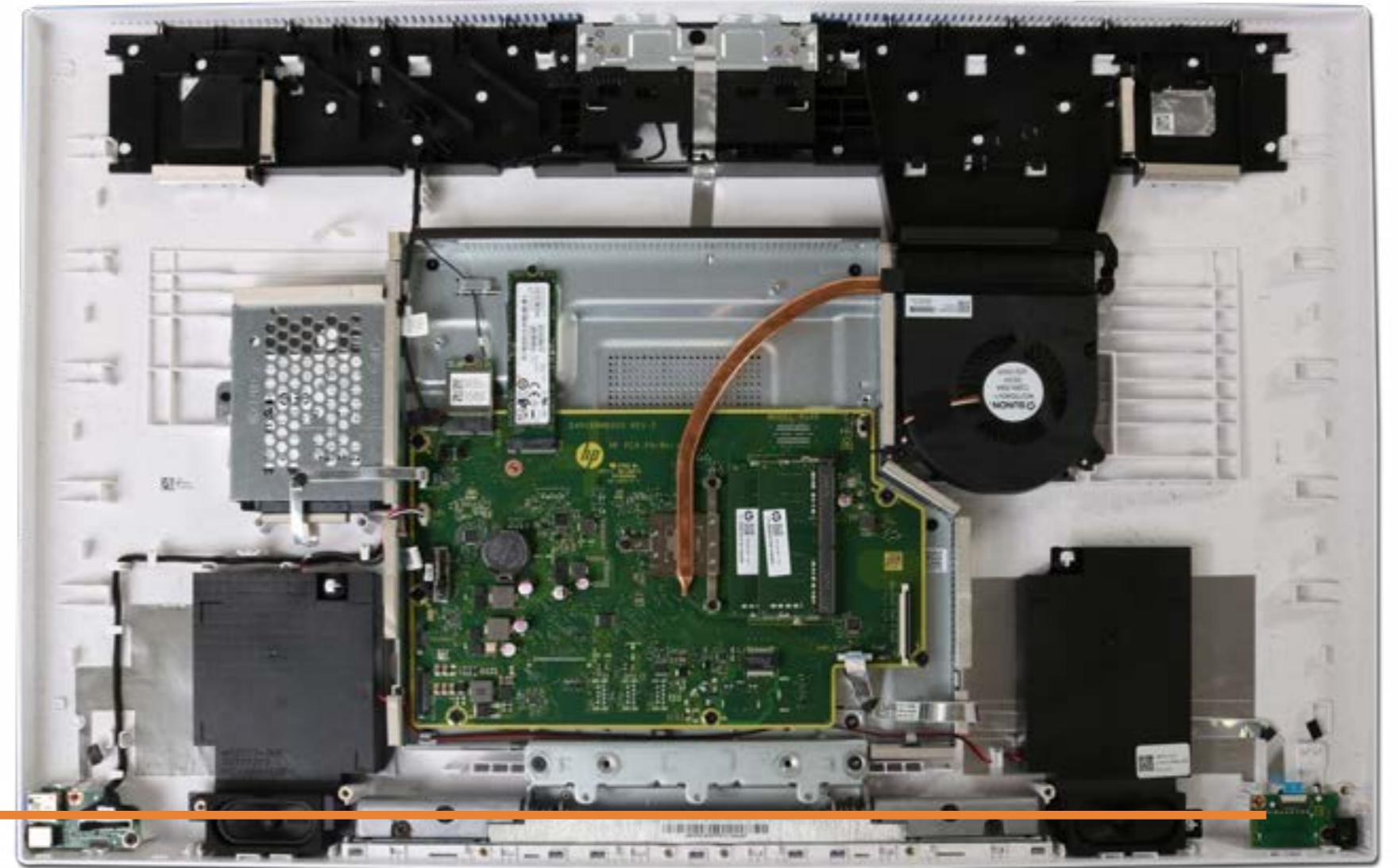
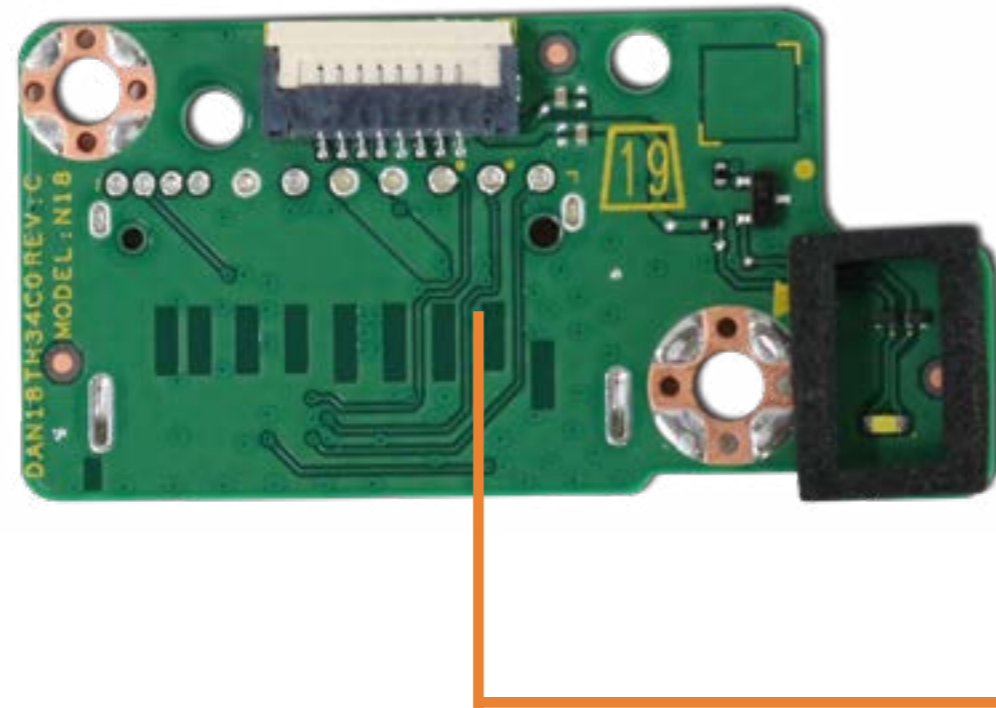
- Speaker Mesh
- Display Panel Assembly
- M.2 Solid State Drive
- Wireless LAN Module
- Memory Module (s)
- Hard Disk Drive Assembly
- Hard Disk Drive Cable
- Speaker Assembly**
- Power Button Board
- Power Button Board Cable
- Side I/O Board
- Side I/O Board Cable
- System Fan
- Heat Sink
- Motherboard with RTC Battery (Top)
- Motherboard with RTC Battery (Bottom)
- Webcam Assembly
- Webcam Module
- Wireless Antenna
- Stand Base
- Stand Hinge
- Back Cover
- LVDS Cable
- Touch Control Cable
- Backlight Cable
- Touch Control Board
- Display Panel Frame
- Display Panel



[Go to External Views](#)

Power Button Board

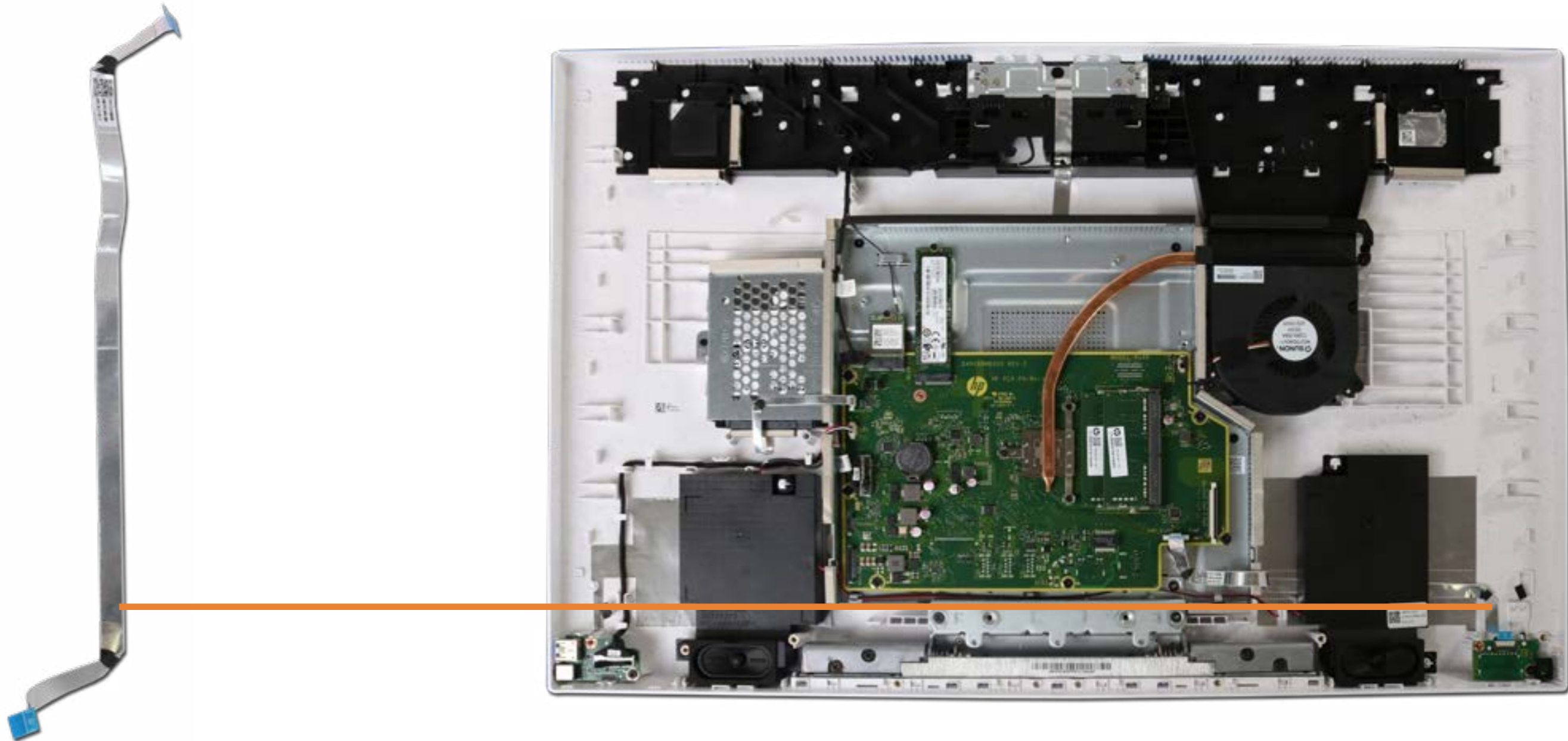
- Speaker Mesh
- Display Panel Assembly
- M.2 Solid State Drive
- Wireless LAN Module
- Memory Module (s)
- Hard Disk Drive Assembly
- Hard Disk Drive Cable
- Speaker Assembly
- Power Button Board**
- Power Button Board Cable
- Side I/O Board
- Side I/O Board Cable
- System Fan
- Heat Sink
- Motherboard with RTC Battery (Top)
- Motherboard with RTC Battery (Bottom)
- Webcam Assembly
- Webcam Module
- Wireless Antenna
- Stand Base
- Stand Hinge
- Back Cover
- LVDS Cable
- Touch Control Cable
- Backlight Cable
- Touch Control Board
- Display Panel Frame
- Display Panel



[Go to External Views](#)

Power Button Board Cable

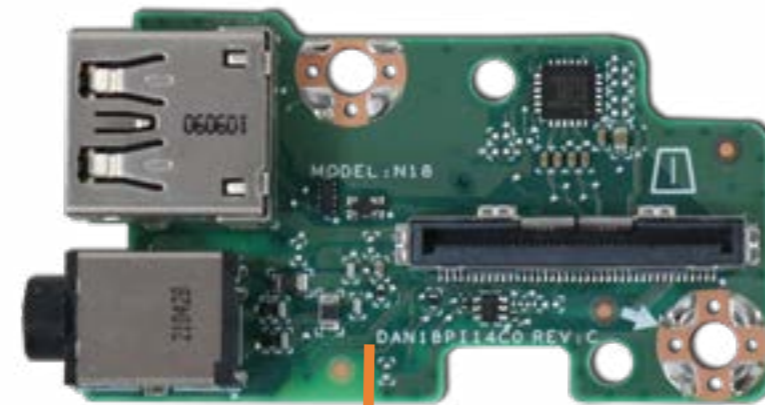
- Speaker Mesh
- Display Panel Assembly
- M.2 Solid State Drive
- Wireless LAN Module
- Memory Module (s)
- Hard Disk Drive Assembly
- Hard Disk Drive Cable
- Speaker Assembly
- Power Button Board
- Power Button Board Cable**
- Side I/O Board
- Side I/O Board Cable
- System Fan
- Heat Sink
- Motherboard with RTC Battery (Top)
- Motherboard with RTC Battery (Bottom)
- Webcam Assembly
- Webcam Module
- Wireless Antenna
- Stand Base
- Stand Hinge
- Back Cover
- LVDS Cable
- Touch Control Cable
- Backlight Cable
- Touch Control Board
- Display Panel Frame
- Display Panel



[Go to External Views](#)

Side I/O Board

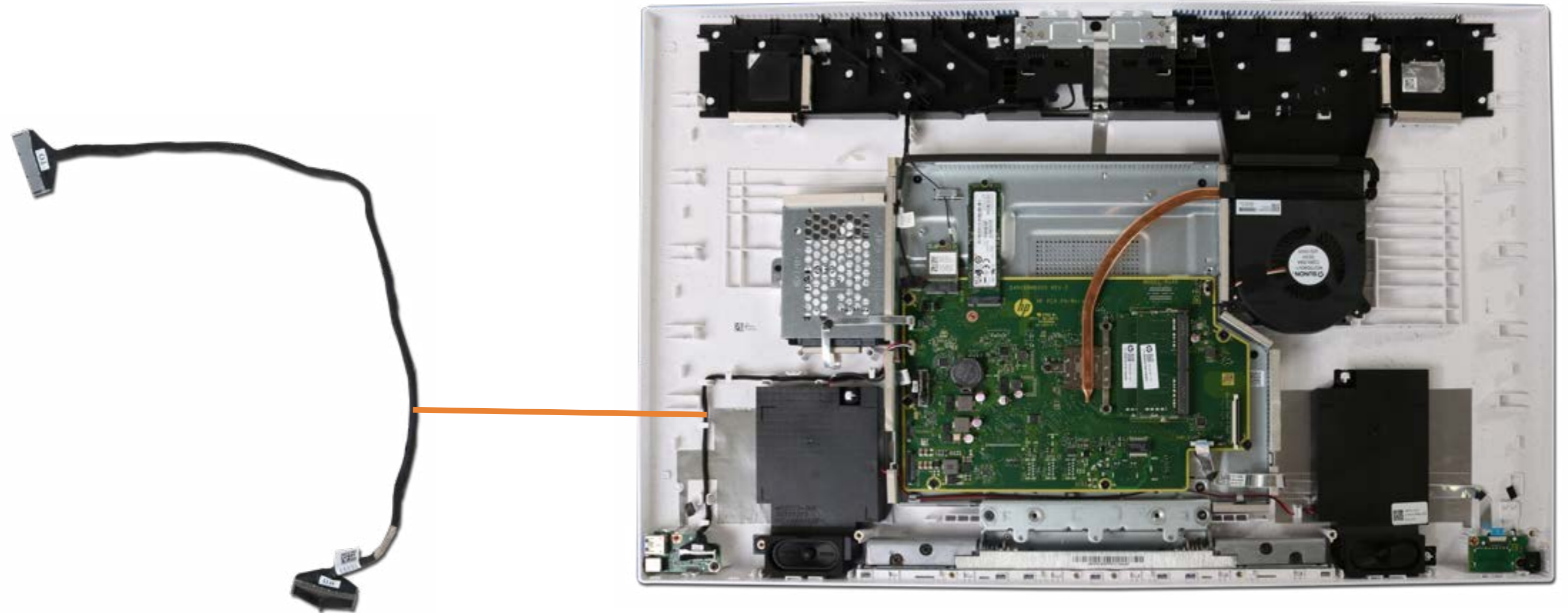
- Speaker Mesh
- Display Panel Assembly
- M.2 Solid State Drive
- Wireless LAN Module
- Memory Module (s)
- Hard Disk Drive Assembly
- Hard Disk Drive Cable
- Speaker Assembly
- Power Button Board
- Power Button Board Cable
- Side I/O Board**
- Side I/O Board Cable
- System Fan
- Heat Sink
- Motherboard with RTC Battery (Top)
- Motherboard with RTC Battery (Bottom)
- Webcam Assembly
- Webcam Module
- Wireless Antenna
- Stand Base
- Stand Hinge
- Back Cover
- LVDS Cable
- Touch Control Cable
- Backlight Cable
- Touch Control Board
- Display Panel Frame
- Display Panel



[Go to External Views](#)

Side I/O Board Cable

- Speaker Mesh
- Display Panel Assembly
- M.2 Solid State Drive
- Wireless LAN Module
- Memory Module (s)
- Hard Disk Drive Assembly
- Hard Disk Drive Cable
- Speaker Assembly
- Power Button Board
- Power Button Board Cable
- Side I/O Board
- Side I/O Board Cable**
- System Fan
- Heat Sink
- Motherboard with RTC Battery (Top)
- Motherboard with RTC Battery (Bottom)
- Webcam Assembly
- Webcam Module
- Wireless Antenna
- Stand Base
- Stand Hinge
- Back Cover
- LVDS Cable
- Touch Control Cable
- Backlight Cable
- Touch Control Board
- Display Panel Frame
- Display Panel



[Go to External Views](#)

System Fan

- Speaker Mesh
- Display Panel Assembly
- M.2 Solid State Drive
- Wireless LAN Module
- Memory Module (s)
- Hard Disk Drive Assembly
- Hard Disk Drive Cable
- Speaker Assembly
- Power Button Board
- Power Button Board Cable
- Side I/O Board
- Side I/O Board Cable

System Fan

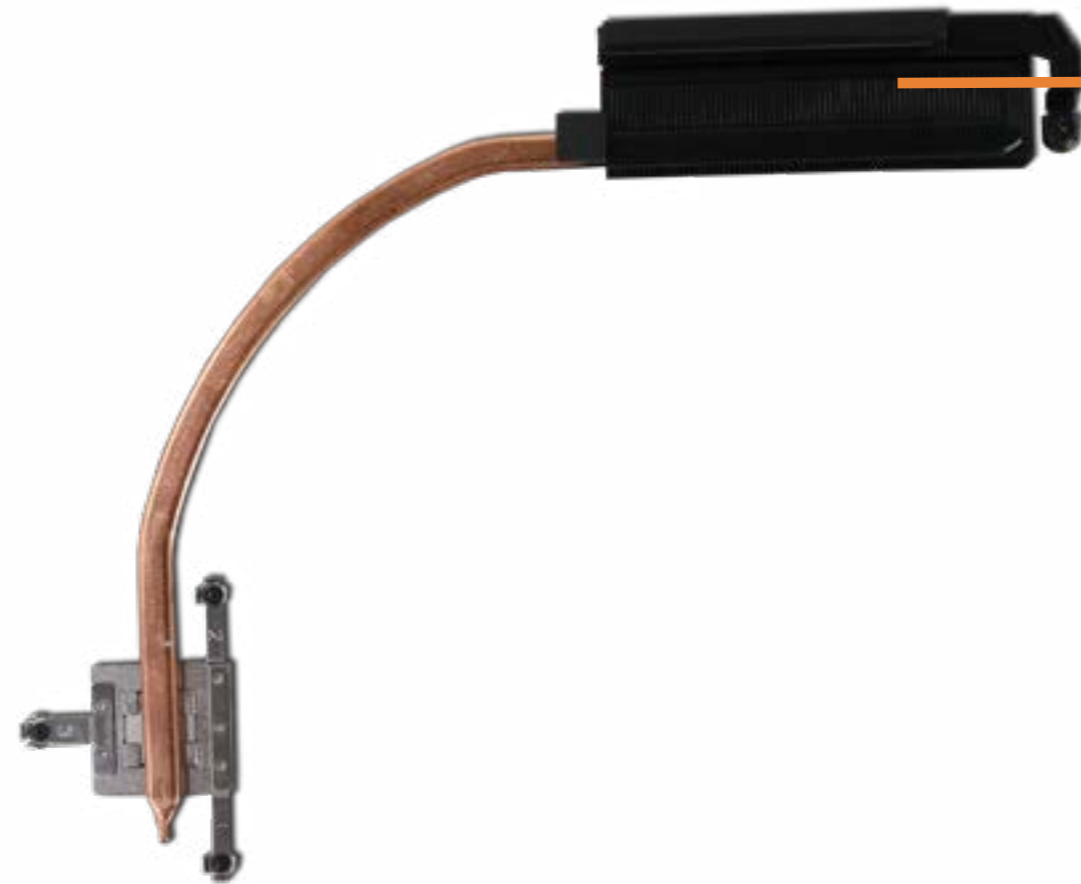
- Heat Sink
- Motherboard with RTC Battery (Top)
- Motherboard with RTC Battery (Bottom)
- Webcam Assembly
- Webcam Module
- Wireless Antenna
- Stand Base
- Stand Hinge
- Back Cover
- LVDS Cable
- Touch Control Cable
- Backlight Cable
- Touch Control Board
- Display Panel Frame
- Display Panel



[Go to External Views](#)

Heat Sink

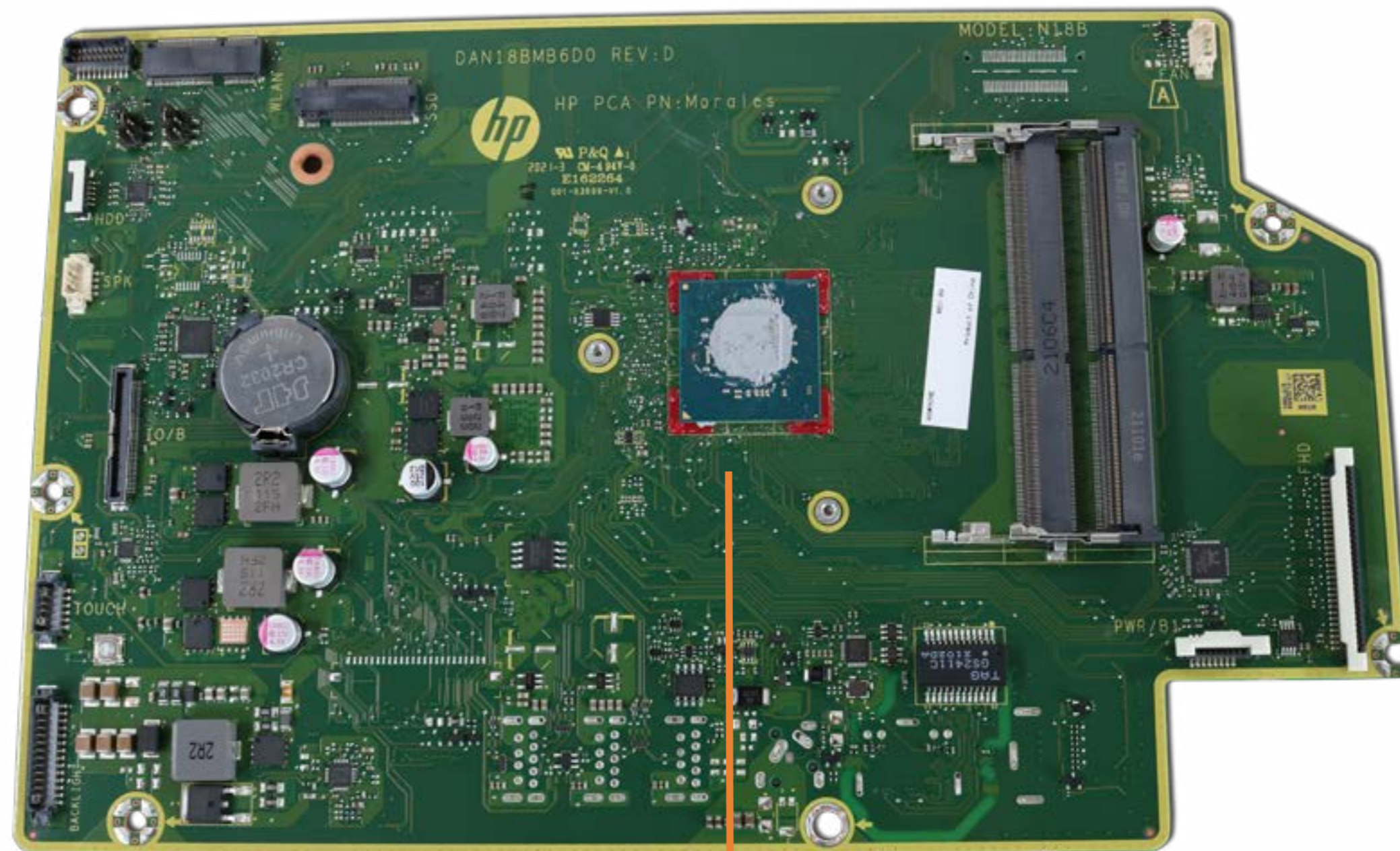
- Speaker Mesh
- Display Panel Assembly
- M.2 Solid State Drive
- Wireless LAN Module
- Memory Module (s)
- Hard Disk Drive Assembly
- Hard Disk Drive Cable
- Speaker Assembly
- Power Button Board
- Power Button Board Cable
- Side I/O Board
- Side I/O Board Cable
- System Fan
- Heat Sink**
- Motherboard with RTC Battery (Top)
- Motherboard with RTC Battery (Bottom)
- Webcam Assembly
- Webcam Module
- Wireless Antenna
- Stand Base
- Stand Hinge
- Back Cover
- LVDS Cable
- Touch Control Cable
- Backlight Cable
- Touch Control Board
- Display Panel Frame
- Display Panel



[Go to External Views](#)

Motherboard with RTC Battery (Top)

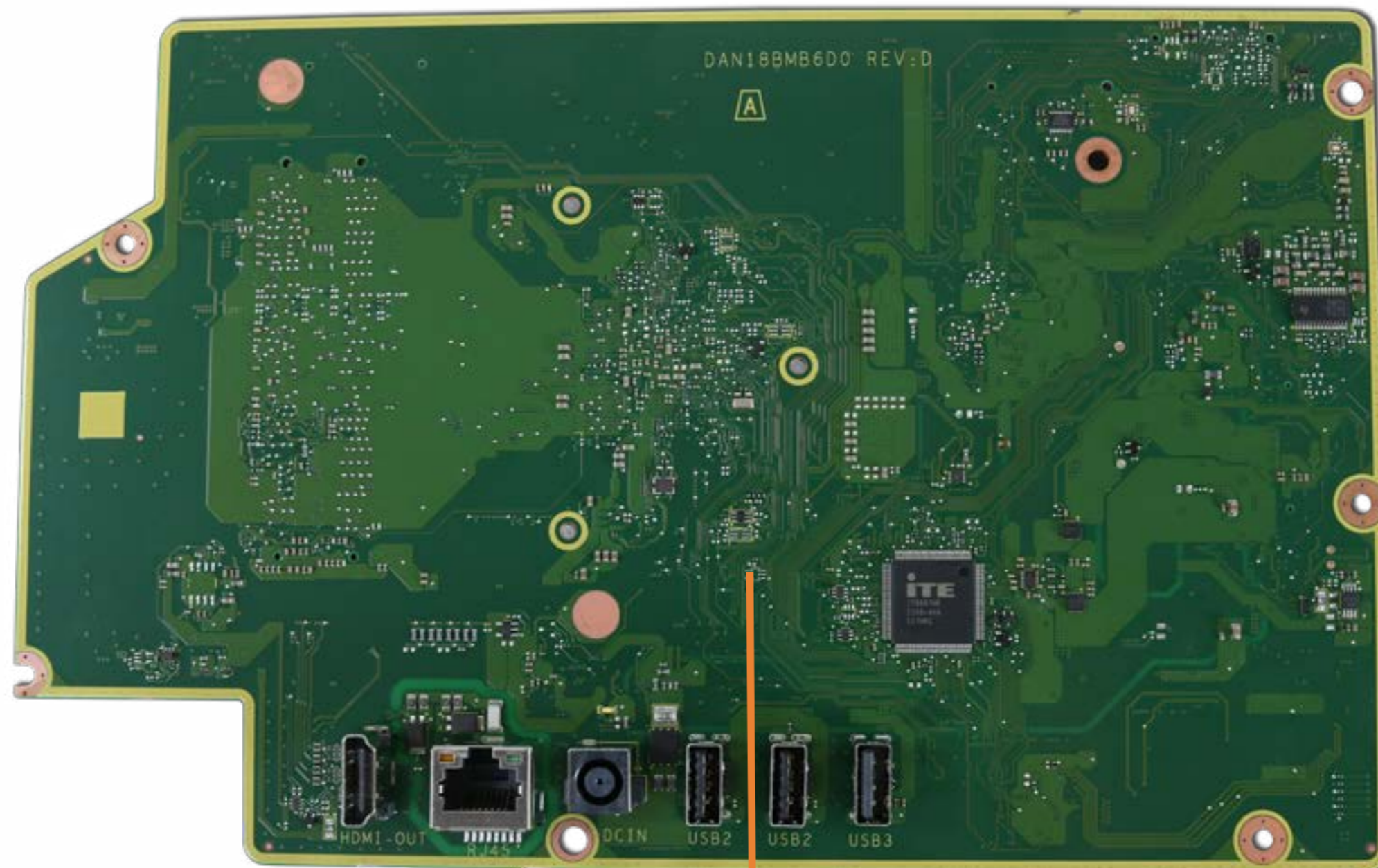
- Speaker Mesh
- Display Panel Assembly
- M.2 Solid State Drive
- Wireless LAN Module
- Memory Module (s)
- Hard Disk Drive Assembly
- Hard Disk Drive Cable
- Speaker Assembly
- Power Button Board
- Power Button Board Cable
- Side I/O Board
- Side I/O Board Cable
- System Fan
- Heat Sink
- Motherboard with RTC Battery (Top)**
- Motherboard with RTC Battery (Bottom)
- Webcam Assembly
- Webcam Module
- Wireless Antenna
- Stand Base
- Stand Hinge
- Back Cover
- LVDS Cable
- Touch Control Cable
- Backlight Cable
- Touch Control Board
- Display Panel Frame
- Display Panel



[Go to External Views](#)

Motherboard with RTC Battery (Bottom)

- Speaker Mesh
- Display Panel Assembly
- M.2 Solid State Drive
- Wireless LAN Module
- Memory Module (s)
- Hard Disk Drive Assembly
- Hard Disk Drive Cable
- Speaker Assembly
- Power Button Board
- Power Button Board Cable
- Side I/O Board
- Side I/O Board Cable
- System Fan
- Heat Sink
- Motherboard with RTC Battery (Top)
- Motherboard with RTC Battery (Bottom)**
- Webcam Assembly
- Webcam Module
- Wireless Antenna
- Stand Base
- Stand Hinge
- Back Cover
- LVDS Cable
- Touch Control Cable
- Backlight Cable
- Touch Control Board
- Display Panel Frame
- Display Panel



[Go to External Views](#)

Webcam Assembly

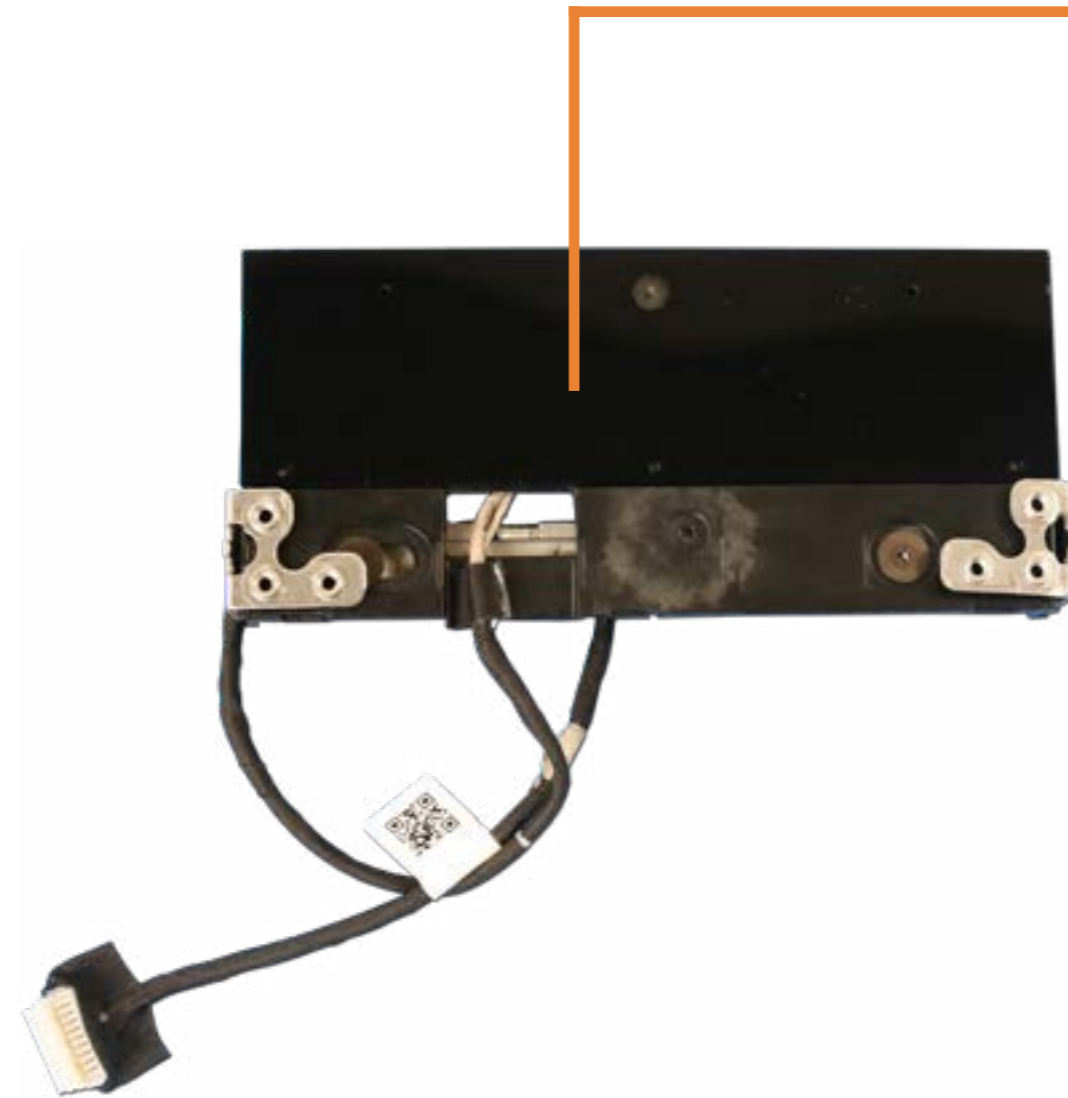
- Speaker Mesh
- Display Panel Assembly
- M.2 Solid State Drive
- Wireless LAN Module
- Memory Module (s)
- Hard Disk Drive Assembly
- Hard Disk Drive Cable
- Speaker Assembly
- Power Button Board
- Power Button Board Cable
- Side I/O Board
- Side I/O Board Cable
- System Fan
- Heat Sink
- Motherboard with RTC Battery (Top)
- Motherboard with RTC Battery (Bottom)
- Webcam Assembly**
- Webcam Module
- Wireless Antenna
- Stand Base
- Stand Hinge
- Back Cover
- LVDS Cable
- Touch Control Cable
- Backlight Cable
- Touch Control Board
- Display Panel Frame
- Display Panel



[Go to External Views](#)

Webcam Module

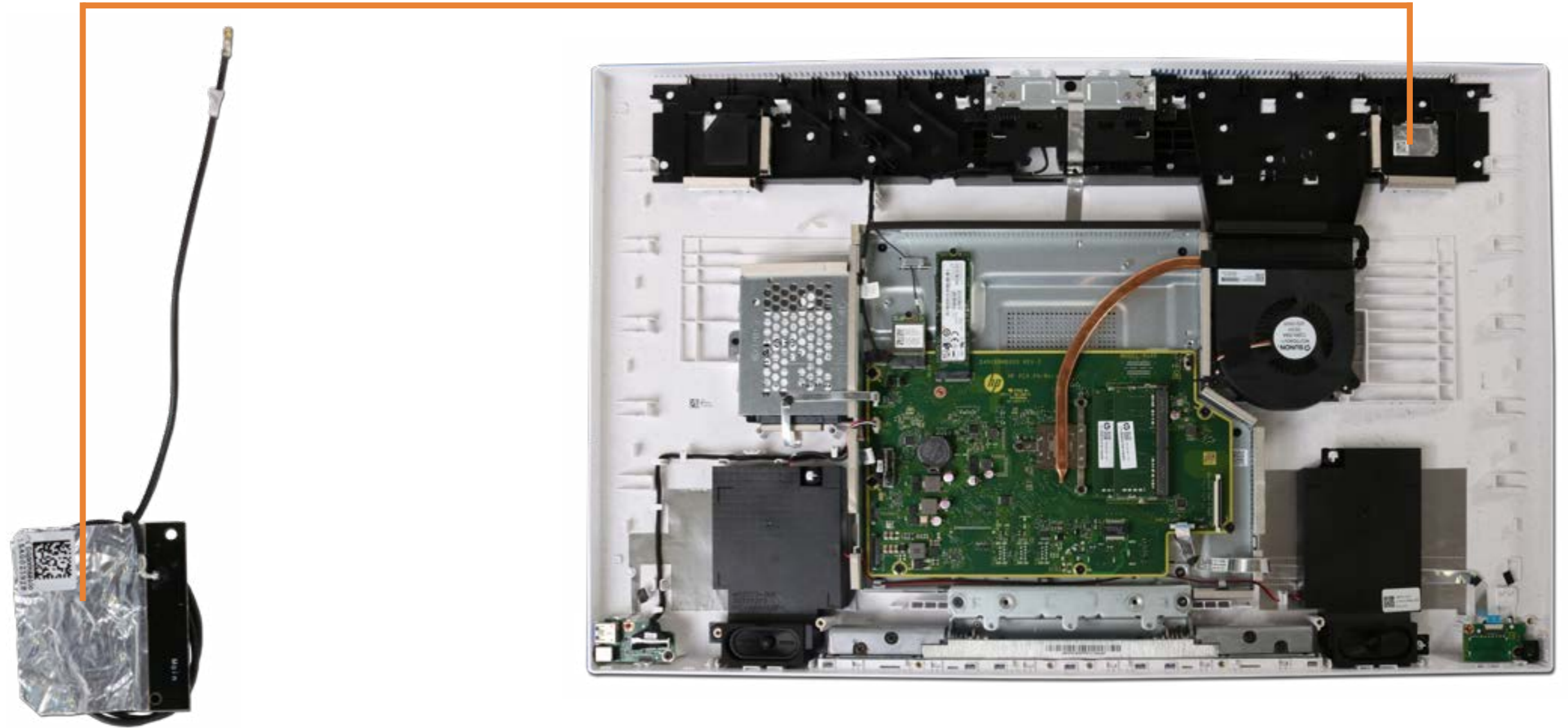
- Speaker Mesh
- Display Panel Assembly
- M.2 Solid State Drive
- Wireless LAN Module
- Memory Module (s)
- Hard Disk Drive Assembly
- Hard Disk Drive Cable
- Speaker Assembly
- Power Button Board
- Power Button Board Cable
- Side I/O Board
- Side I/O Board Cable
- System Fan
- Heat Sink
- Motherboard with RTC Battery (Top)
- Motherboard with RTC Battery (Bottom)
- Webcam Assembly
- Webcam Module**
- Wireless Antenna
- Stand Base
- Stand Hinge
- Back Cover
- LVDS Cable
- Touch Control Cable
- Backlight Cable
- Touch Control Board
- Display Panel Frame
- Display Panel



[Go to External Views](#)

Wireless Antenna

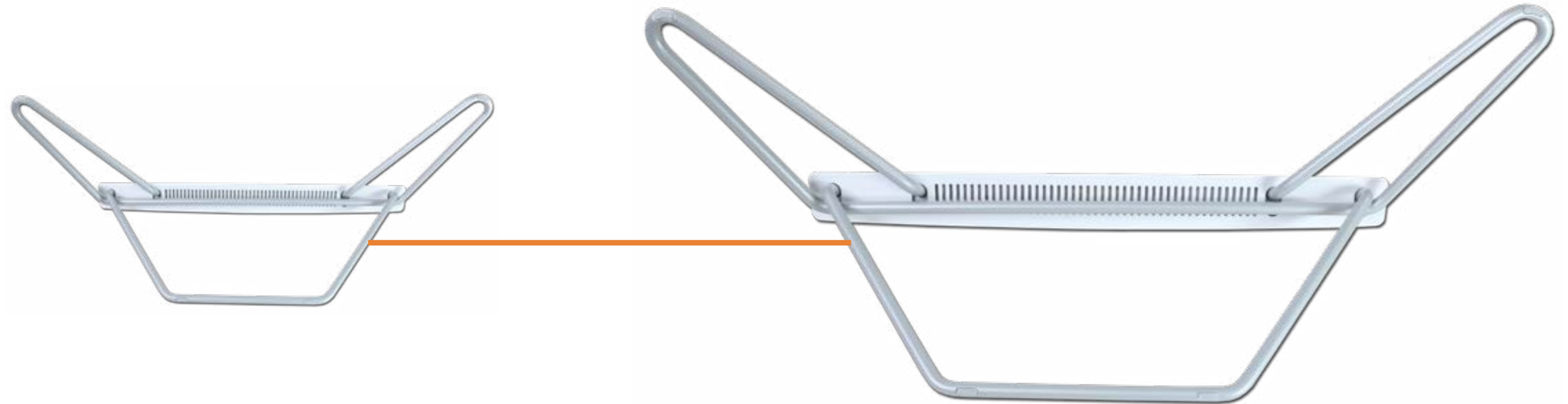
- Speaker Mesh
- Display Panel Assembly
- M.2 Solid State Drive
- Wireless LAN Module
- Memory Module (s)
- Hard Disk Drive Assembly
- Hard Disk Drive Cable
- Speaker Assembly
- Power Button Board
- Power Button Board Cable
- Side I/O Board
- Side I/O Board Cable
- System Fan
- Heat Sink
- Motherboard with RTC Battery (Top)
- Motherboard with RTC Battery (Bottom)
- Webcam Assembly
- Webcam Module
- Wireless Antenna**
- Stand Base
- Stand Hinge
- Back Cover
- LVDS Cable
- Touch Control Cable
- Backlight Cable
- Touch Control Board
- Display Panel Frame
- Display Panel



[Go to External Views](#)

Stand Base

- Speaker Mesh
- Display Panel Assembly
- M.2 Solid State Drive
- Wireless LAN Module
- Memory Module (s)
- Hard Disk Drive Assembly
- Hard Disk Drive Cable
- Speaker Assembly
- Power Button Board
- Power Button Board Cable
- Side I/O Board
- Side I/O Board Cable
- System Fan
- Heat Sink
- Motherboard with RTC Battery (Top)
- Motherboard with RTC Battery (Bottom)
- Webcam Assembly
- Webcam Module
- Wireless Antenna
- Stand Base**
- Stand Hinge
- Back Cover
- LVDS Cable
- Touch Control Cable
- Backlight Cable
- Touch Control Board
- Display Panel Frame
- Display Panel



[Go to External Views](#)

Stand Hinge

- Speaker Mesh
- Display Panel Assembly
- M.2 Solid State Drive
- Wireless LAN Module
- Memory Module (s)
- Hard Disk Drive Assembly
- Hard Disk Drive Cable
- Speaker Assembly
- Power Button Board
- Power Button Board Cable
- Side I/O Board
- Side I/O Board Cable
- System Fan
- Heat Sink
- Motherboard with RTC Battery (Top)
- Motherboard with RTC Battery (Bottom)
- Webcam Assembly
- Webcam Module
- Wireless Antenna
- Stand Base
- Stand Hinge**
- Back Cover
- LVDS Cable
- Touch Control Cable
- Backlight Cable
- Touch Control Board
- Display Panel Frame
- Display Panel



[Go to External Views](#)

Back Cover

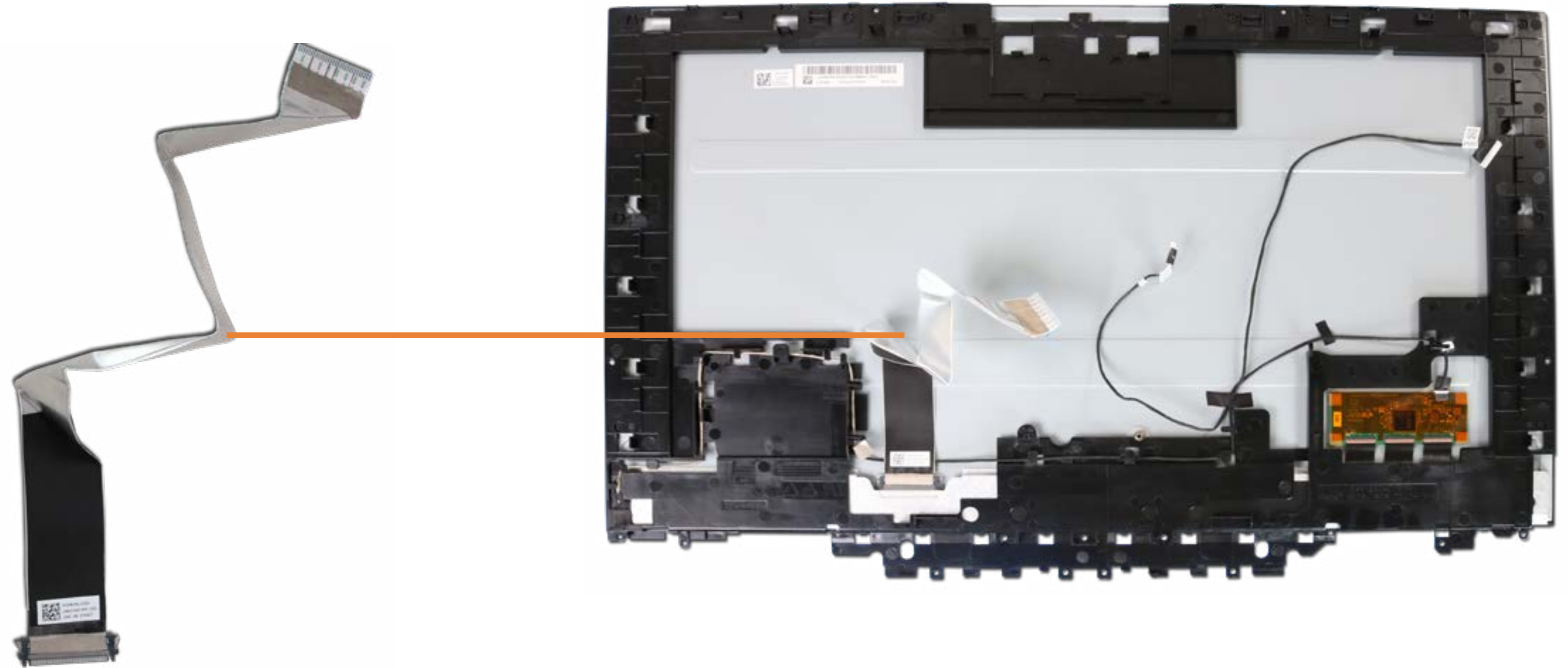
- Speaker Mesh
- Display Panel Assembly
- M.2 Solid State Drive
- Wireless LAN Module
- Memory Module (s)
- Hard Disk Drive Assembly
- Hard Disk Drive Cable
- Speaker Assembly
- Power Button Board
- Power Button Board Cable
- Side I/O Board
- Side I/O Board Cable
- System Fan
- Heat Sink
- Motherboard with RTC Battery (Top)
- Motherboard with RTC Battery (Bottom)
- Webcam Assembly
- Webcam Module
- Wireless Antenna
- Stand Base
- Stand Hinge
- Back Cover**
- LVDS Cable
- Touch Control Cable
- Backlight Cable
- Touch Control Board
- Display Panel Frame
- Display Panel



[Go to External Views](#)

LVDS Cable

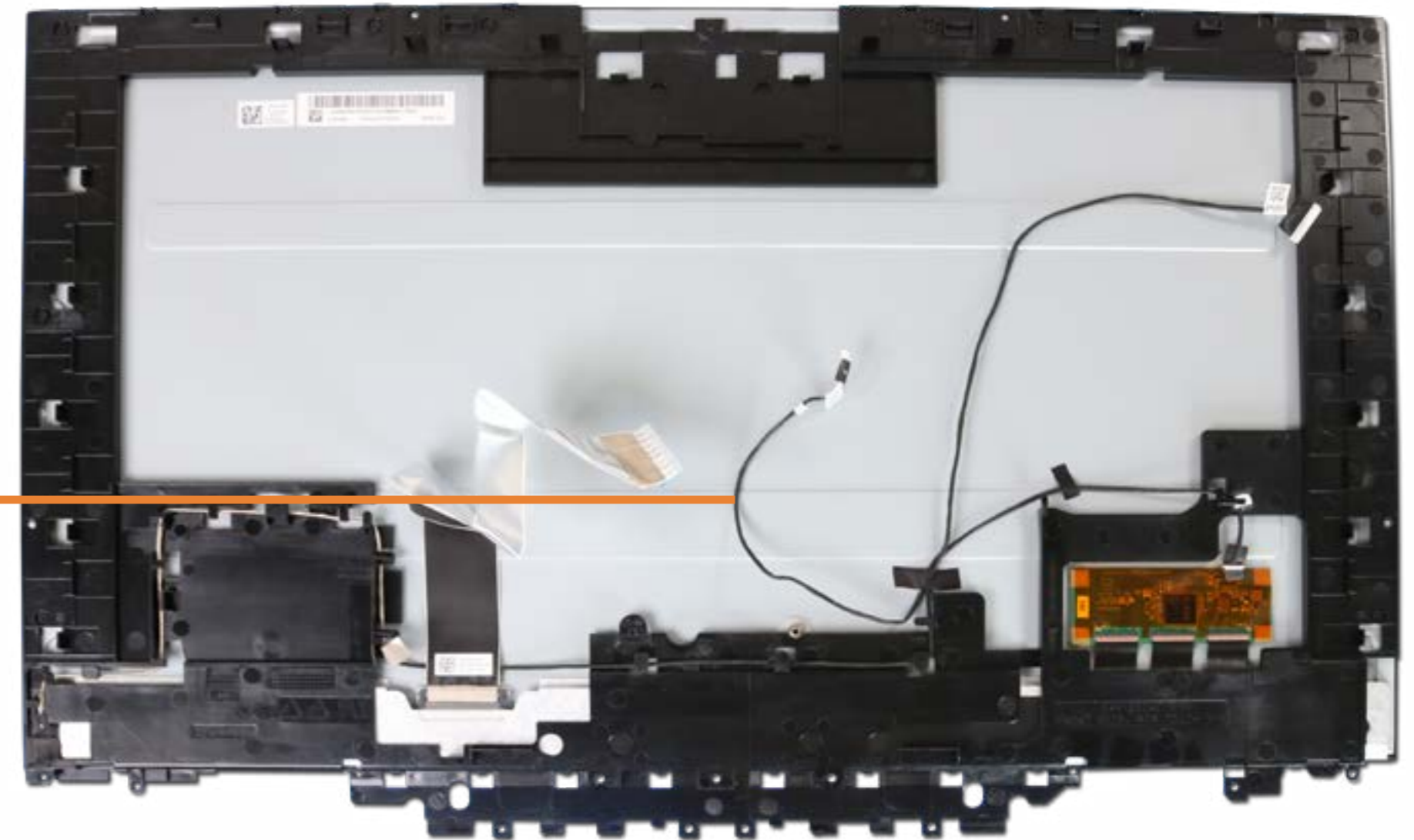
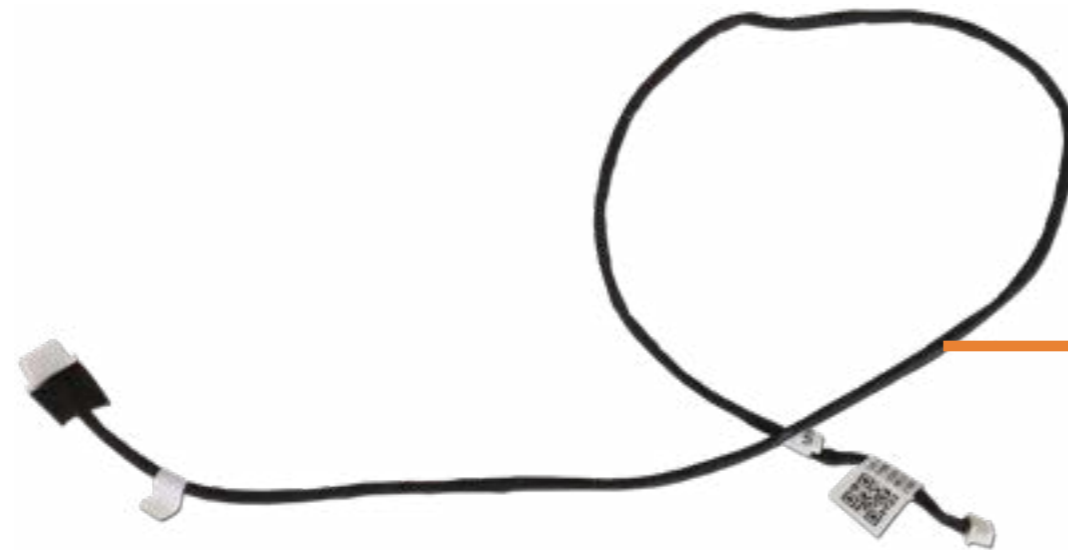
- Speaker Mesh
- Display Panel Assembly
- M.2 Solid State Drive
- Wireless LAN Module
- Memory Module (s)
- Hard Disk Drive Assembly
- Hard Disk Drive Cable
- Speaker Assembly
- Power Button Board
- Power Button Board Cable
- Side I/O Board
- Side I/O Board Cable
- System Fan
- Heat Sink
- Motherboard with RTC Battery (Top)
- Motherboard with RTC Battery (Bottom)
- Webcam Assembly
- Webcam Module
- Wireless Antenna
- Stand Base
- Stand Hinge
- Back Cover
- LVDS Cable**
- Touch Control Cable
- Backlight Cable
- Touch Control Board
- Display Panel Frame
- Display Panel



[Go to External Views](#)

Touch Control Cable

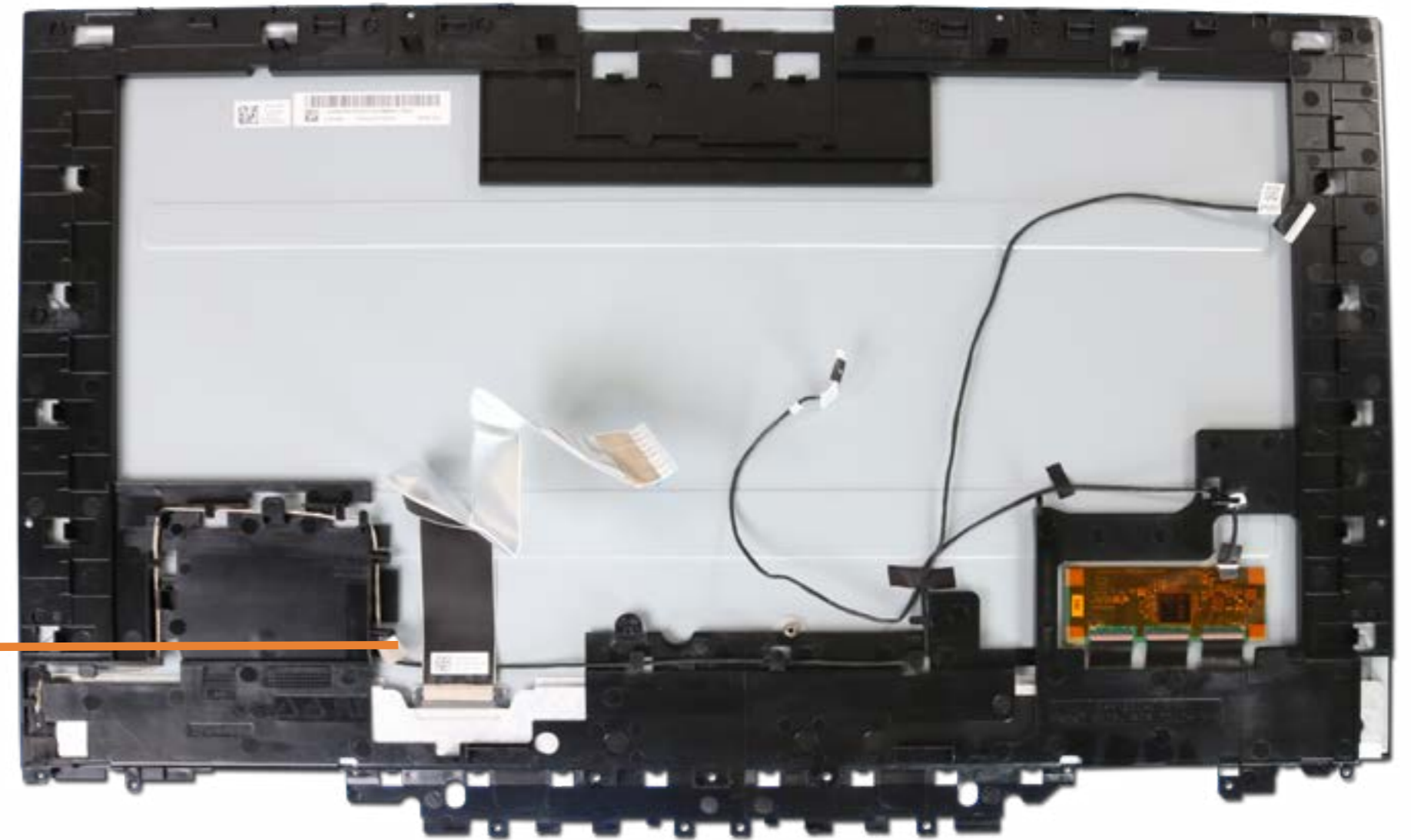
- Speaker Mesh
- Display Panel Assembly
- M.2 Solid State Drive
- Wireless LAN Module
- Memory Module (s)
- Hard Disk Drive Assembly
- Hard Disk Drive Cable
- Speaker Assembly
- Power Button Board
- Power Button Board Cable
- Side I/O Board
- Side I/O Board Cable
- System Fan
- Heat Sink
- Motherboard with RTC Battery (Top)
- Motherboard with RTC Battery (Bottom)
- Webcam Assembly
- Webcam Module
- Wireless Antenna
- Stand Base
- Stand Hinge
- Back Cover
- LVDS Cable
- Touch Control Cable**
- Backlight Cable
- Touch Control Board
- Display Panel Frame
- Display Panel



[Go to External Views](#)

Backlight Cable

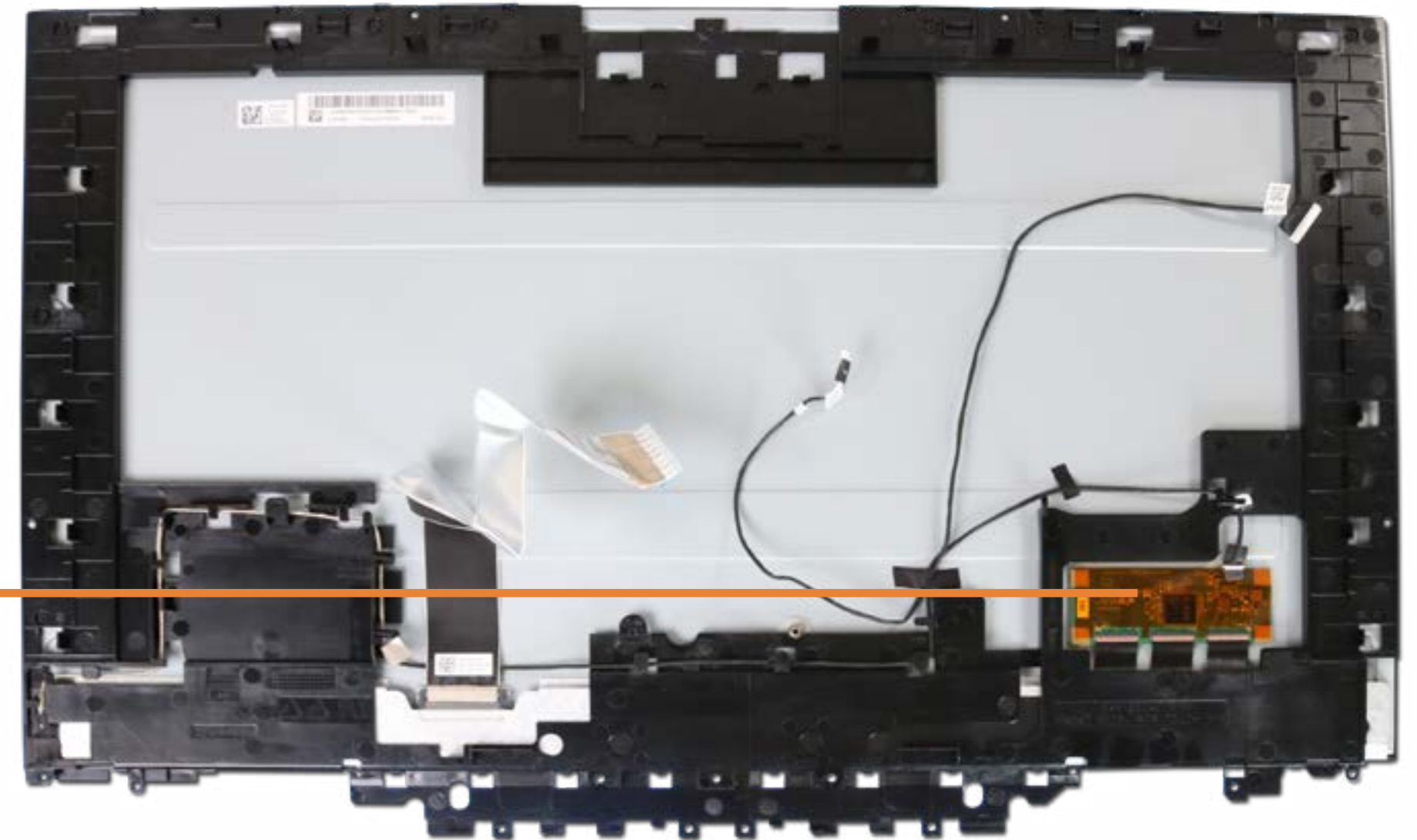
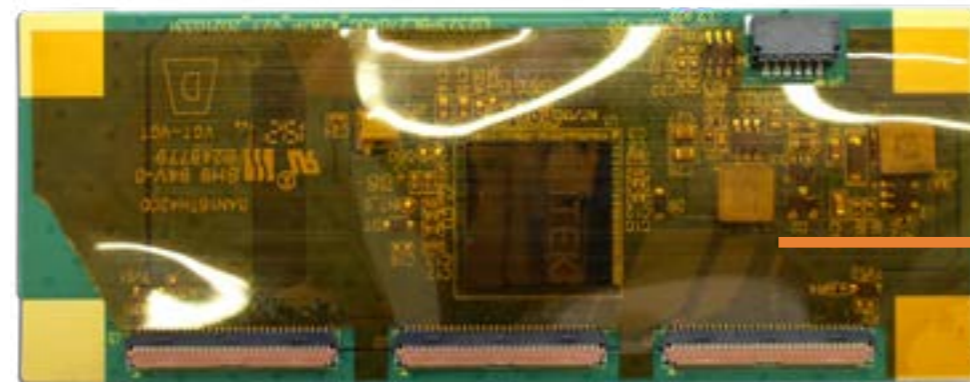
- Speaker Mesh
- Display Panel Assembly
- M.2 Solid State Drive
- Wireless LAN Module
- Memory Module (s)
- Hard Disk Drive Assembly
- Hard Disk Drive Cable
- Speaker Assembly
- Power Button Board
- Power Button Board Cable
- Side I/O Board
- Side I/O Board Cable
- System Fan
- Heat Sink
- Motherboard with RTC Battery (Top)
- Motherboard with RTC Battery (Bottom)
- Webcam Assembly
- Webcam Module
- Wireless Antenna
- Stand Base
- Stand Hinge
- Back Cover
- LVDS Cable
- Touch Control Cable
- Backlight Cable**
- Touch Control Board
- Display Panel Frame
- Display Panel



[Go to External Views](#)

Touch Control Board

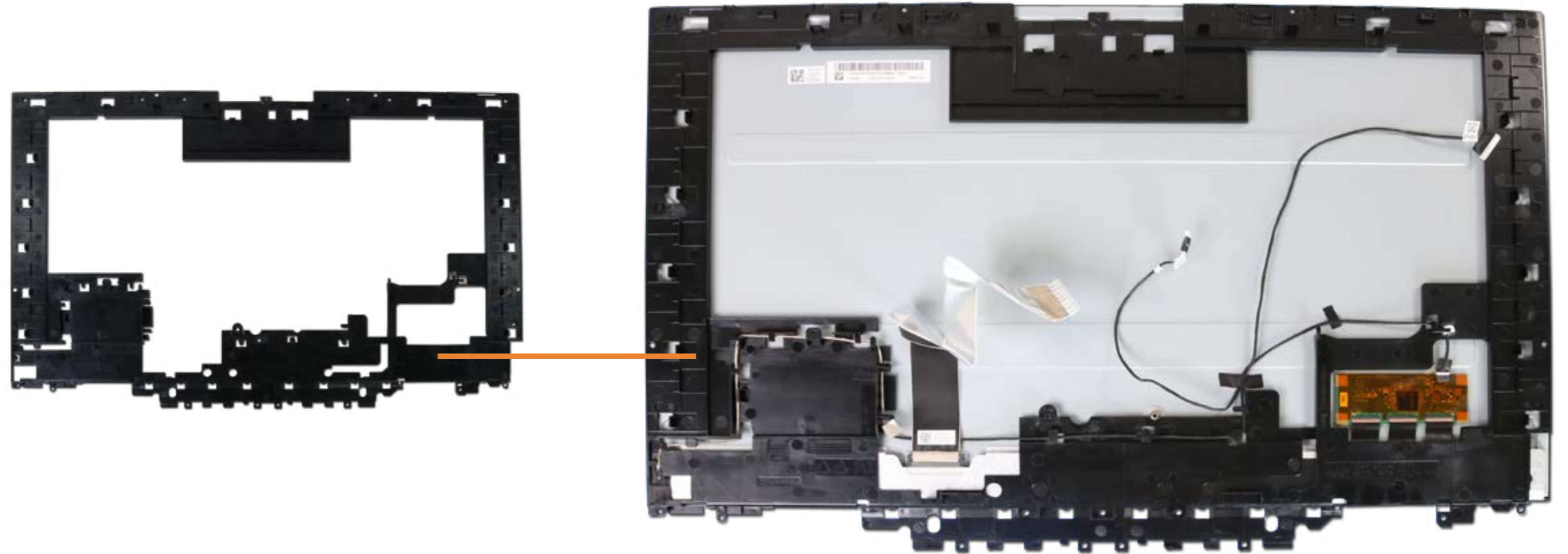
- Speaker Mesh
- Display Panel Assembly
- M.2 Solid State Drive
- Wireless LAN Module
- Memory Module (s)
- Hard Disk Drive Assembly
- Hard Disk Drive Cable
- Speaker Assembly
- Power Button Board
- Power Button Board Cable
- Side I/O Board
- Side I/O Board Cable
- System Fan
- Heat Sink
- Motherboard with RTC Battery (Top)
- Motherboard with RTC Battery (Bottom)
- Webcam Assembly
- Webcam Module
- Wireless Antenna
- Stand Base
- Stand Hinge
- Back Cover
- LVDS Cable
- Touch Control Cable
- Backlight Cable
- Touch Control Board**
- Display Panel Frame
- Display Panel



[Go to External Views](#)

Display Panel Frame

- Speaker Mesh
- Display Panel Assembly
- M.2 Solid State Drive
- Wireless LAN Module
- Memory Module (s)
- Hard Disk Drive Assembly
- Hard Disk Drive Cable
- Speaker Assembly
- Power Button Board
- Power Button Board Cable
- Side I/O Board
- Side I/O Board Cable
- System Fan
- Heat Sink
- Motherboard with RTC Battery (Top)
- Motherboard with RTC Battery (Bottom)
- Webcam Assembly
- Webcam Module
- Wireless Antenna
- Stand Base
- Stand Hinge
- Back Cover
- LVDS Cable
- Touch Control Cable
- Backlight Cable
- Touch Control Board
- Display Panel Frame**
- Display Panel



[Go to External Views](#)

Display Panel

- Speaker Mesh
- Display Panel Assembly
- M.2 Solid State Drive
- Wireless LAN Module
- Memory Module (s)
- Hard Disk Drive Assembly
- Hard Disk Drive Cable
- Speaker Assembly
- Power Button Board
- Power Button Board Cable
- Side I/O Board
- Side I/O Board Cable
- System Fan
- Heat Sink
- Motherboard with RTC Battery (Top)
- Motherboard with RTC Battery (Bottom)
- Webcam Assembly
- Webcam Module
- Wireless Antenna
- Stand Base
- Stand Hinge
- Back Cover
- LVDS Cable
- Touch Control Cable
- Backlight Cable
- Touch Control Board
- Display Panel Frame
- Display Panel**



[Go to External Views](#)