

7

Continue printer setup in HP Smart 在 HP Smart 內繼續印表機設定



*HP account required *需要 HP 帳戶



Find setup information and videos online.
在線上尋找設定資訊及視訊。

hp.com/support/printer-setup



Printed in Thailand

EN ZHTW

© Copyright 2021 HP Development Company, L.P.

The Apple logo is a trademark of Apple Inc., registered in the U.S. and other countries.

App Store is a service mark of Apple Inc.

Android, Google Play, and the Google Play logo are trademarks of Google Inc.



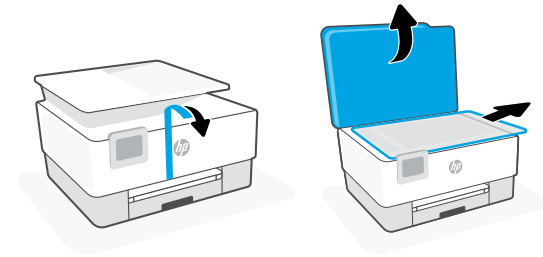
22A60-90007

Setup Guide 設置指南

HP OfficeJet Pro 9010e series

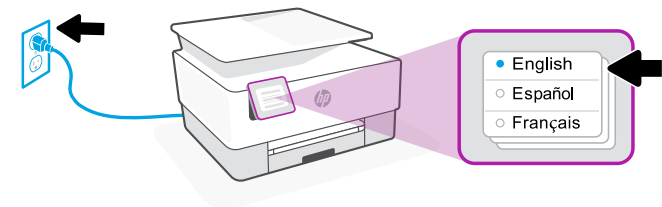


1 Prepare printer 準備印表機



Remove all tape and packaging material.

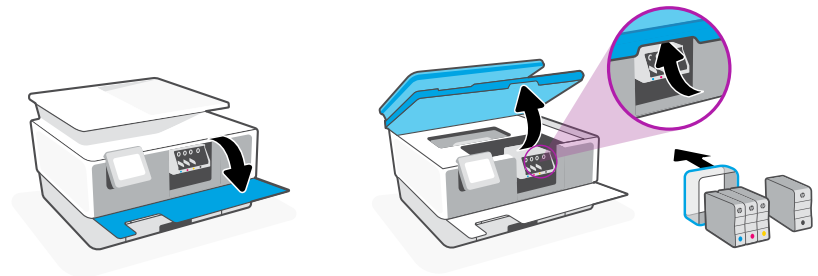
取下所有膠帶及包裝材料。



Plug in to automatically power on. Select language and country/region.

插入電源即會自動開機。選取語言與國家/地區。

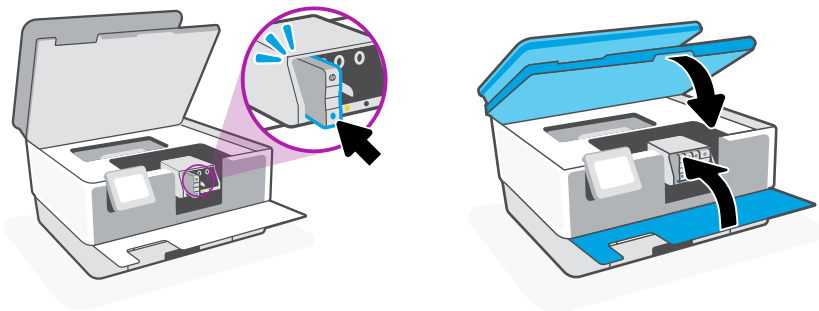
2 Cartridge access 墨水匣存取



Open the front door and then lift the cartridge access door by the scanner lid. Unpack cartridges.

打開前擋門，接著透過掃描器蓋板抬起墨水匣存取擋門。打開墨水匣包裝。

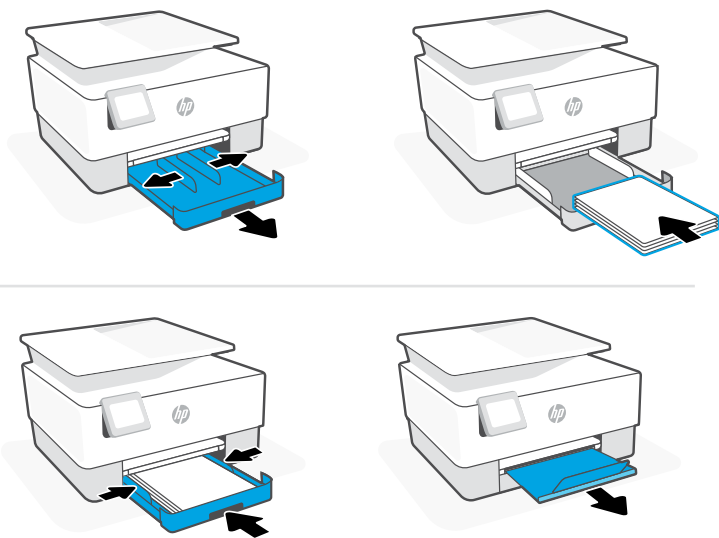
3 Insert cartridges 插入墨水匣



Insert each cartridge securely into the indicated slot. Close both doors.

將各個墨水匣穩固地插入指定的插槽中。將兩個擋門關上。

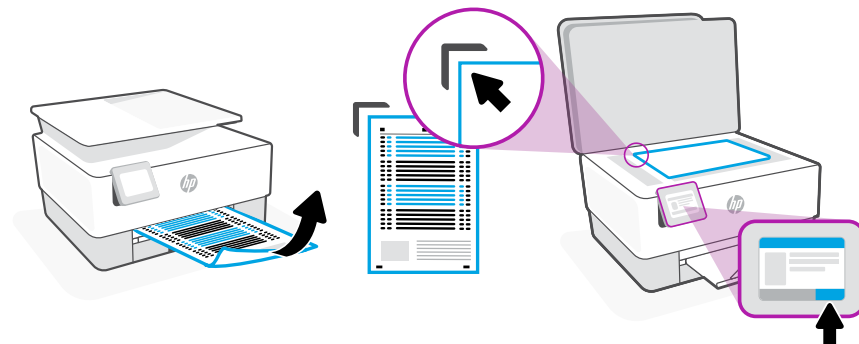
4 Prepare paper tray 準備紙匣



Open the paper tray and slide out the guides. Load Letter or A4 paper and adjust the guides. Close the tray. Pull open the output tray extender.

打開紙匣並將導板滑出。裝入 Letter 或 A4 紙張，然後調整導板。關上紙匣。將出紙匣延伸架拉出。

5 Scan alignment page 掃描校準測試頁



Use the control panel to print and scan the alignment page.

使用控制面板列印並掃描校正頁。

6 Install HP Smart software (required) 安裝 HP Smart 軟體 (必要)



123.hp.com

View instructions to connect to Wi-Fi and finish setup in the HP Smart software. Go to 123.hp.com on a mobile device or computer to install.

在 HP Smart 軟體內檢視連接 Wi-Fi 並完成設定的相關指示。透過行動裝置或電腦前往 123.hp.com 進行安裝。

