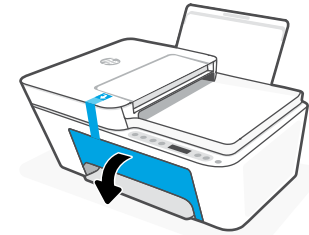
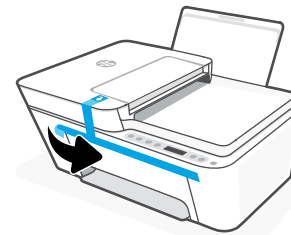


Setup Guide 設置指南

HP DeskJet 4100e All-in-One series

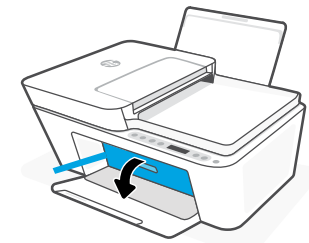
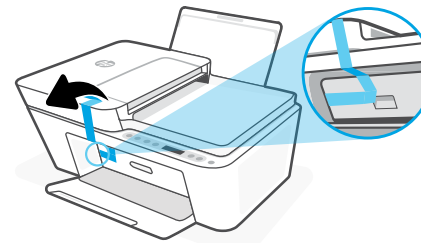


1 Prepare printer 準備印表機



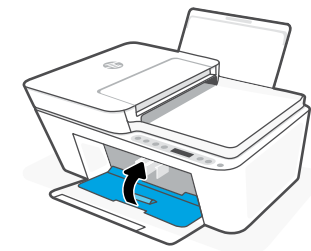
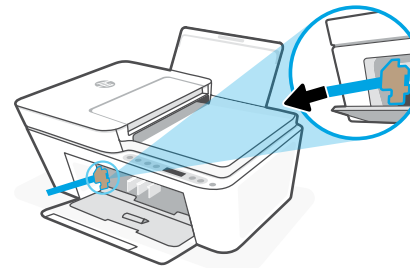
Remove the tape on the outside of the printer. Open the output tray.

打開出紙匣。取下印表機外部的膠帶。



Continue to remove the tape. Open the ink access door.

繼續取下膠帶。開啟墨水存取擋門。



Remove and discard all tape and cardboard. Close the ink access door.

將所有膠帶及紙板取下並丟棄。關閉墨水存取擋門。

Printed in Thailand

© Copyright 2021 HP Development Company, L.P.

EN

ZHTW

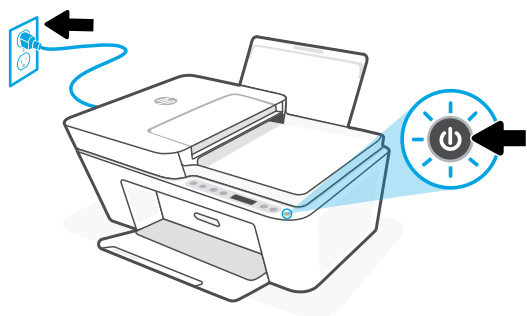


26Q90-90024

The Apple logo is a trademark of Apple Inc., registered in the U.S. and other countries.
App Store is a service mark of Apple Inc.
Android, Google Play, and the Google Play logo are trademarks of Google Inc.

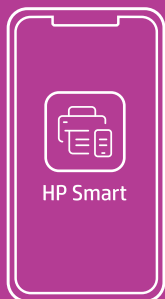


2 Power on 啟動印表機



Plug in and turn on the printer.
插上電源線，然後開啟印表機。

3 Install HP Smart software (required) 安裝 HP Smart 軟體 (必要)



123.hp.com

View instructions to install ink, load paper, and connect to Wi-Fi in the HP Smart software.
Go to 123.hp.com on a mobile device or computer to install.

在 HP Smart 軟件中查看安裝墨水，裝入紙張和連接到 Wi-Fi 的說明。在移動設備或計算機上訪問 123.hp.com 進行。

4 Continue printer setup in HP Smart 在 HP Smart 內繼續印表機設定



*HP account required *需要 HP 帳戶



Find setup information and videos online.
在線上尋找設定資訊及視訊。

hp.com/support/printer-setup

