



Maintenance and Service Guide

X27qc model

SUMMARY

This guide provides information about spare parts, removal and replacement of parts, diagnostic tests, problem troubleshooting, and more.

© Copyright 2022 HP Development Company, L.P.

AMD is a trademark of Advanced Micro Devices, Inc. Bluetooth is a trademark owned by its proprietor and used by HP Inc. under license. NVIDIA is a trademark and/or registered trademark of NVIDIA Corporation in the U.S. and other countries. USB Type-C and USB-C are registered trademarks of USB Implementers Forum. DisplayPort and the DisplayPort logo are trademarks owned by the Video Electronics Standards Association (VESA) in the United States and other countries.

The information contained herein is subject to change without notice. The only warranties for HP products and services are set forth in the express warranty statements accompanying such products and services. Nothing herein should be construed as constituting an additional warranty. HP shall not be liable for technical or editorial errors or omissions contained herein.

First Edition March.2022

Document Part Number:

M45870-HP X27qc-MSG-V1

Assembly part number: M45870-001

Product notice

Only trained service personnel familiar with this product should service it. Before performing any maintenance or service, be sure to read "Important Safety Information".

Table of Contents

1	Getting started	1
	Important safety information.....	1
	Important service information and precautions.....	1
	RoHS (2002/95/EC) requirements.....	2
	General descriptions	2
	Firmware updates.....	2
	Before returning the repaired product to the customer	2
2	Monitor features	3
	Features	3
	Front components.....	4
	Rear and side components	5
	Locating the serial number and product number.....	6
3	Illustrated parts catalog.....	7
	How to order parts.....	8
4	Removal and replacement procedures	9
	Preparation for disassembly.....	9
	Rear Cover	10
	Power board.....	14
	Connector repair.....	15
	HDMI connector CN5101.....	17
	DP connector CN551	17
	AUDIO connector CN601	18
	Function test.....	20
	Function test.....	20
	Support and troubleshooting	20

1 Getting started

Read this chapter to learn about safety information and where to find additional HP resources.

Important safety information

Carefully read the cautions and notes within this document to minimize the risk of personal injury to service personnel. The cautions and notes are not exhaustive. Proper service methods are important to the safe, reliable operation of equipment. Improper service methods can damage equipment.

The service procedures recommended and described in this service manual provide effective methods of performing service operations. Service engineers should have prior repair knowledge and experience as well as appropriate training for the product before performing service procedures.

- Be sure your working environment is dry and clean and meets all government safety requirements.
- Be sure that other persons are safe while you are servicing the product.
- Do not perform any action that can cause a hazard to the customer or make the product unsafe.
- Use proper safety devices to ensure your personal safety.
- Always use approved tools and test equipment for servicing.
- Never assume the product's power is disconnected from the main power supply. Check that it is disconnected before opening the product's cabinet.
- Modules containing electrical components are sensitive to electrostatic discharge (ESD). Follow ESD safety procedures while handling these parts.
- Some products contain more than one battery. Do not disassemble or expose a battery to high temperatures, such as throwing into fire, or the battery may explode.
- Refer to government requirements for battery recycling or disposal.

This information provides general service information for the monitor. Adherence to the procedures and precautions is essential for proper service.

IMPORTANT: Only trained service personnel who are familiar with this HP product should perform service or maintenance for it. Before performing any service or maintenance, personnel must read the important safety information.

IMPORTANT: You must disconnect the power cord from the power source before opening the monitor to prevent component damage.

Important service information and precautions

- Repair must be performed by professional service technicians in a repair center. End users should not perform these procedures.
- Please note during servicing that the primary side is the high voltage area.
- This monitor meets ROHS requirements. Be sure to use lead-free solder wire when soldering.
- If you must change a capacitor, be sure to match the polarity as printed on the PCB.
- If you must replace a capacitor, make sure the specification and part number match the BOM and location.

- If you must replace a capacitor, insert new parts carefully to avoid a short circuit caused by the near pin.
- Do not get the board wet. Water and moisture can cause a short circuit that causes malfunctions.
- To avoid damage, be sure to use lead-free solder.
- When soldering, work quickly to avoid overheating the circuit board.
- Keep the soldering iron tip clean and well tinned when replacing parts.
- After repair, perform a close inspection of the circuit board to confirm it is in good condition.
- After repair, perform a function test to confirm the power supply is working properly.

ERP Lot5 requirement

1. A professional repairer must have the technical competence to repair electronic displays and comply with the applicable regulations for repairers of electrical equipment in the Member States where the repairer operates. Reference to an official registration system as professional repairer, where such a system exists in the Member States, shall be accepted as proof of compliance.
2. A professional repairer must have insurance that covers liabilities resulting from repairs, regardless of whether required by the Member State.

RoHS (2002/95/EC) requirements

Applied to all countries that require RoHS.

The RoHS (Restriction of Hazardous Substance in Electrical and Electronic Equipment Directive) is a legal requirement by the EU (European Union) for the global electronics industry sold in the EU and other countries. Any electrical and electronics products launched in the market after June 2006 should meet this RoHS requirement. Products launched in the market before June 2006 are not required to be compliant with RoHS parts. If the original parts are not RoHS compliant, the replacement parts can be non-ROHS compliant. If the original parts are RoHS compliant, the replacement parts **MUST** be RoHS compliant.

If product service or maintenance requires replacing parts, confirm the RoHS requirement before replacement.

General descriptions

This manual contains general information. There are two levels of service:

Level 1: Cosmetic/appearance/alignment service

Level 2: Circuit board or standard parts replacement

Firmware updates

Firmware updates for the monitor are available at support.hp.com. If no firmware is posted, the monitor does not need a firmware update.

Before returning the repaired product to the customer

Perform an AC leakage current check on exposed metallic parts to be sure the product is safe to operate without the potential of electrical shock. Do not use a line isolation transformer during this check.

Measurements that are not within specified limits present a possible shock hazard. You must check and repair the product before returning it to the customer.

2 Monitor features

This chapter provides an overview of the monitor's features.

Features

The monitor includes the following features:

- 68,6 cm(27in) curved 1500mm radius with 2560x1440 resolution, ultra-wide backlit display, plus full-screen support for lower resolutions
- Antiglare panel with an LED backlight
- Wide viewing angle to allow viewing from a sitting or standing position, or when moving from side to side
- Tilt adjustment capability
- Height adjustment capability
- DisplayPort (DP) video input
- High-Definition Multimedia Interface(HDMI) video input (cable provided)
- Audio-out (headphone)jack
- Plug and Play capability, if supported by your operating system
- Securitycable slot provision on rear of monitor for optional security cable
- On-screen display (OSD) adjustments in several languages for easy setup and screen optimization
- High-bandwidth Digital Content Protection (HDCP) copy protection on all digital inputs
- VESA mounting bracket for attaching the monitor to a wall-mount device or swing arm
- Low blue light mode settings to create a more relaxing and less stimulating image
- Energy saver feature to meet requirements for reduced power consumption

NOTE: For safety and regulatory information, see the *Product Notices* provided in your documentation kit. To access the latest user guide, go to <http://www.hp.com/support> and follow the instructions to find your product. Then select **User Guides**.

Front components

To identify the components on the front of the monitor, use this illustration and table.



Table 1-1: Front components

Control	Function
1 Menu/OK	If the OSD menu is open, press to confirm selection. If the OSD menu is closed, press to open the OSD menu.
2 Next Active Input/Up/Increase button	If the OSD menu is close, switches the monitor's input source to the next active input. If the OSD menu is close, press to open the information menu at HDMI, or to perform auto adjustment at VGA.* .
3 Color Modes/Down/Decrease button	If the OSD menu is close, opens the Color menu where you can adjust the monitor screen to a comfortable If the OSD menu is open, press to navigate forward through the OSD menu and decrease adjustment levels.
4 Brightness+ Input/Exit/Back button	If the OSD menu is close, opens the Brightness+ adjustment scale. If the OSD menu is closed, press to switch to the next video input port.*
5 Power button	Turns the monitor on or off.

Rear and side components

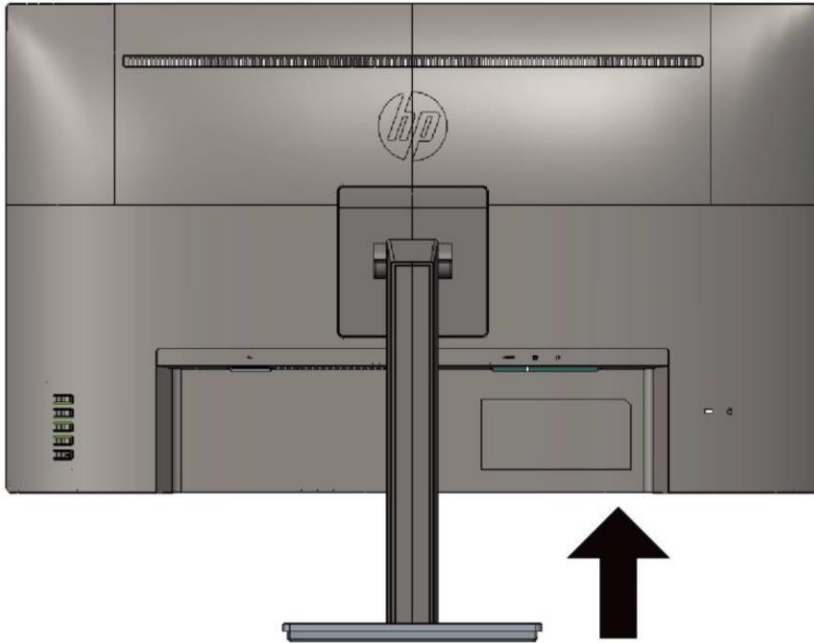
To identify the components on the rear of the monitor, use this illustration and table.



Control	Function
1 Power connector	Connects the power cord
2 HDMI port	Connects an HDMI cable from the monitor to a source device such as a computer.
3 DisplayPort in connector	Connects the DisplayPort cable from the monitor to a source device such as a computer.
4 Headphone jack	Connect the headphone to the monitor.

Locating the serial number and product number

The serial number and product number are located on a label on the rear of the monitor panel. You may need these numbers when contacting HP about the monitor model.



For worldwide models:

型号/모델명/Номер: X27qc
HP X27qc Curved 165Hz QHD Gaming Monitor

Serial No.: XXXXXXXX

XXXXXXXXXXXXXXXXXX

Product No.: 32H02AA/32H02AS/32H00AA/32H01AA
Regulatory Model No/规定型号/型号/모델명: HSD-0101-A
Assembly No.: M45870-001 Rev.: WVM111
Spare No.: M46650-001
Consumo de energia en operación: xx Wh
Manufactured /制造日期 / 製造日期: November 2021

产品名称/Name Produk: 液晶显示器/液晶顯示器/모니터
68.6cm(27") Monitor

Electrical Ratings/电源电压 交流/電壓 電流:
Input Rating/Daya Listrik: 100-240V~2A(2A) 50/60Hz
Apparatet må tilkoples jordet stikkontakt.
Apparatet skall anslutas till jordat uttag.
Laite on liitettävä suojakoskettimilla varustettuun pistorasiaan.
Apparatets stikprop skal tilsluttes en stikkontakt med jord,
som giver forbindelse til stikproppens jord.
HP Inc.
서비스센터 : 1588-3003

This device complies with part 15 of the FCC Rules. Operation is subject to the following two conditions: (1) This device may not cause harmful interference, and (2) this device must accept any interference received, including interference that may cause undesired operation.

CAN ICES-003(B)/NMB-003(B)
警告: 使用過度恐傷害視力。
Made in China/Produk dari Cina/ 中国制造/中國製造
Q40G027N69030C

UK CA
HP Inc UK Ltd, Regulatory Enquiries, Earley West, 300 Thames Valley Park Drive, Reading, RG6 1PT

R-R-hpi-HSD-0101-A
XU100626-21068A
TPV Electronics (Fujian) Co., Ltd.

Nihon HP 21W

SAFETY MARK
2 1 0 3 8 6 - 1 1

PC RECYCLE
HDMI
HIGH-DEFINITION MULTIMEDIA INTERFACE

PS E
R3A304
RoHS

eyesafe DISPLAY
LOW BLUE LIGHT COLOR ACCURATE

TÜVRheinland CERTIFIED
TÜVRheinland ZERTIFIZIERT

FCC
显示器合格证

CE
HP, HC-TRE, 71025
Boeblingen, Germany

UKCA
EAC
TÜVRheinland CERTIFICADO
www.tuv.com ID: 500010000

eyesafe DISPLAY
LOW BLUE LIGHT COLOR ACCURATE

TÜVRheinland CERTIFIED
www.tuv.com ID: 500010000

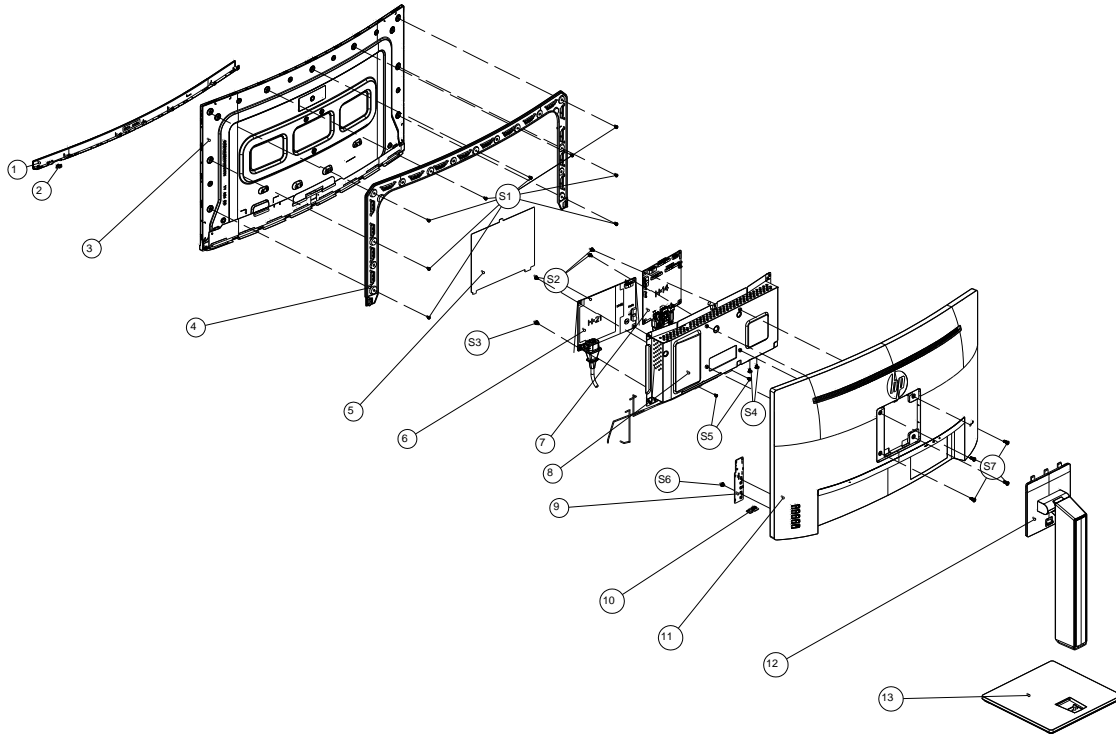
Bildqualität ISO 9241-307
TÜVRheinland ZERTIFIZIERT
www.tuv.com ID: 500010000

GS
NOM

NYCE

3 Illustrated parts catalog

To identify the monitor major components, use this illustration and table.



Item	Description	Qty
1	DECO_BEZEL L27WR-Dblc1hp-p12	1
2	LENS_POWER	1
3	LCD TPM270WQ1-SG1G011 V21G FQ TPV	1
4	MIDDLE_FRAME L27WR-Dblc1hp-p12	1
5	INSULATING SHEET 34.1*17	1
6	CONVERTER BOARD	1
7	MAIN BOARD	1
8	MAINFRAME	1
9	KEY BOARD	1
10	LED BOARD	1
11	REAR_COVER	1
12	stand ass'y NA NA	1
13	BASE_ASS'Y NA NA	1
S1	SCREW 3 4	9
S2	SCREW D3 6	4
S3	SCREW -- 6mm	1
S4	SCREW D3 6	2
S5	SCREW 3 4	2
S6	SCREW Q3 5	1
S7	SCREW 4 10	4

How to order parts

The HP authorized repair center can purchase the power board from HP.

Power board

Description	HP spare part number	Manufacturer part number
PSU HP X27qc	M84745-001 M84745-002	PLPCKH362UQA1 PLPCLH421UQA5

Capacitors and connectors are available for purchase from the following EU distributors:

- RS: [Capacitors | RS Components \(rs-online.com\)](#)
- Digi-Key: [Digikey Electronics](#)

Capacitors by distributor

Component description	Location	Component distributor	Distributor part number
EC 680uF 20% 35V 12.5*20 3000 hr 2A PY1V	C905/C906	digikey	EGPA350ELL681MK20S
EC 470uF 20% 25V 10x12 5000 hr 1.6A ENB1	C9905	RS	EEUFR1E471

Connectors by manufacturer

Component description	Location identifier	Component distributor	Distributor part number
HDMI	CN5101	RS	SD-47151-001 (Molex)
DP	CN551	digikey	DP1RD20JQ3 (JAE)
AUDIO	CN601	RS	913-1021 (RS PRO)

NOTE: Rear cover and chassis need to be modified to hold connector. Connector may need modifications to meet functional, safety and regulatory requirements accordingly if it doesn't match exactly.

You can purchase cables from the HP part store at <https://partsurfer.hp.com/Search.aspx>.

Internal and External Power Supplies are available for purchase from the following EU distributor: EET_ <https://www.eetgroup.com/en-eu/>

NOTE: HP continually improves and changes product parts. For complete and current information about supported parts for your product, go to <https://partsurfer.hp.com/Search.aspx>, select your country or region, and then follow the on-screen instructions.

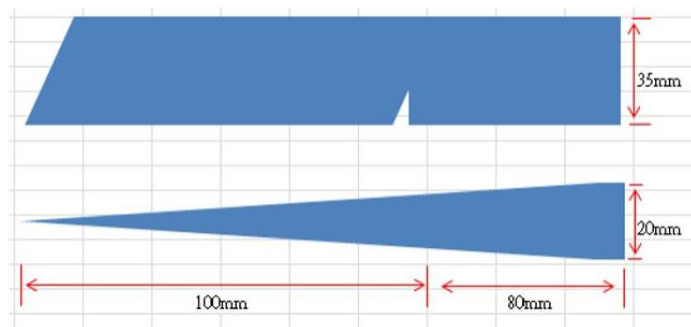
4 Removal and replacement procedures

Adherence to these procedures and precautions is essential for proper service.

Preparation for disassembly

Use this information to properly prepare to disassemble and reassemble the monitor.

- 1) Read the “Important safety information” and “Important service information and precautions” sections in the “Getting started” chapter of this guide.
- 2) Clean the room for disassembly.
- 3) Identify the disassembly area.
- 4) Check the position that the monitors are to be placed along with the number of monitors. Prepare the area for material flow according to the disassembly layout.
- 5) Be sure to have the following equipment and materials:
 - Press fixture
 - Working table
 - Screwdriver
 - Knife
 - Gloves
 - Cleaning cloth
 - ESD protection
 - Scraper bar in the following dimensions:



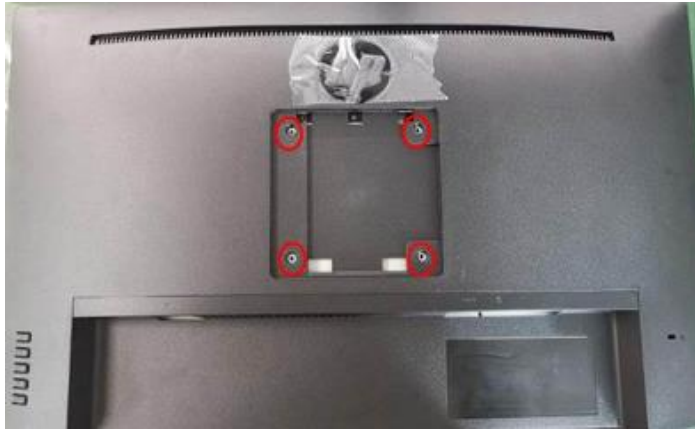
Rear Cover

Before removing the Rear Cover, follow these steps:

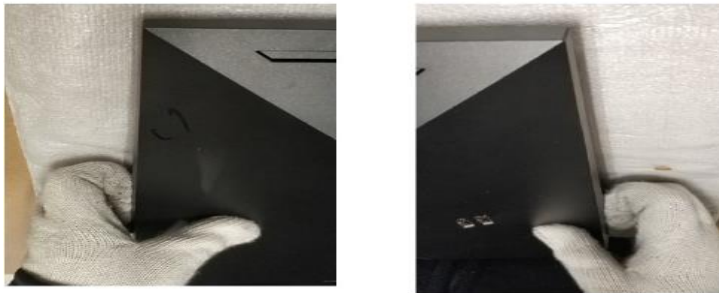
- ▲ Prepare the monitor for disassembly. See Preparation for disassembly on page 9.

Remove the Rear Cover:

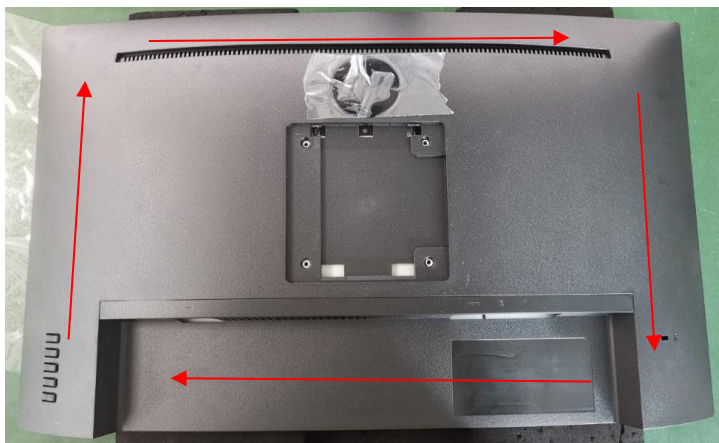
- 1) Remove four screws from the rear case.



- 2) Use your fingers to split the left and right sides apart between the middle frame and rear case.



- 3) Insert the scraper bar tool into the gap between the middle frame and rear case, and then rotate. The hook opens. Repeat the steps.



4) Disassemble Rear Cover.

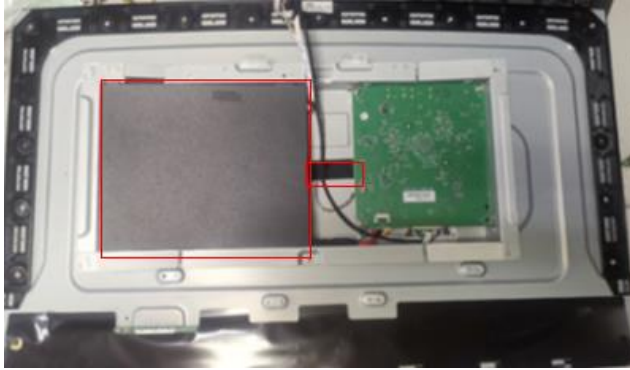


5) Tear off the tapes as below.

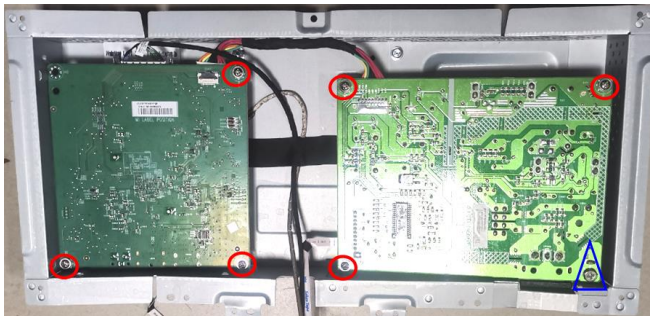


6) Disconnect the pins and remove four screws. Take off the Mylar.





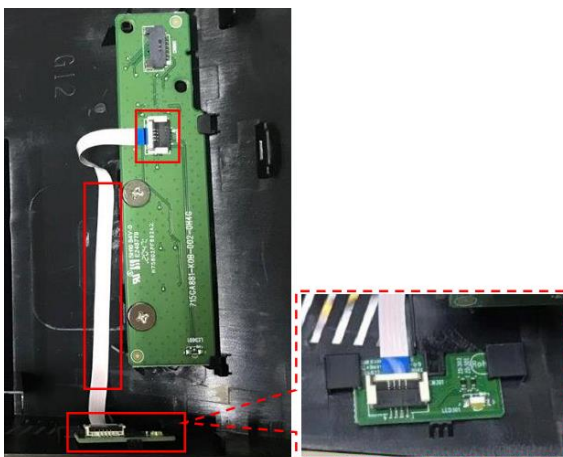
7) Remove 7 screws to remove the Main Board and Converter Board.

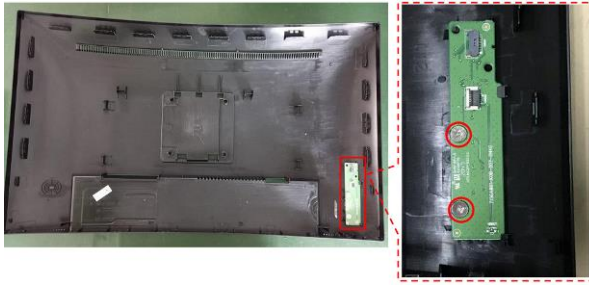


8) Remove 9 screws to disassemble the middle frame and Panel.



9) Remove the key board.





- 10) Disassemble all the boards from housing.
- 11) Disconnect all the wires from the board.

Power board

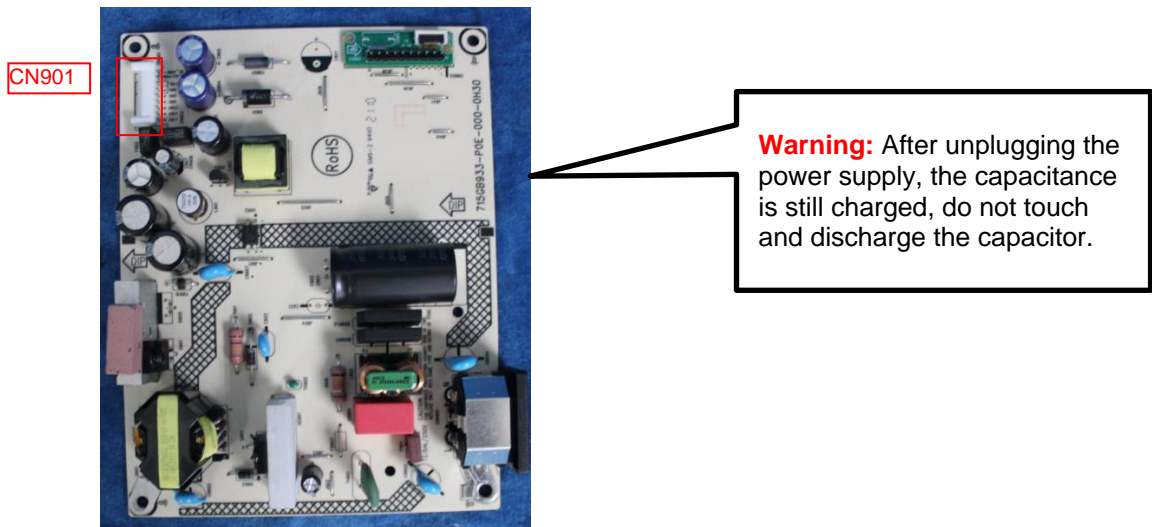
The power board part number is PLPCKH362UQA1 & PLPCLH421UQA5

Before removing the power board, follow these steps:

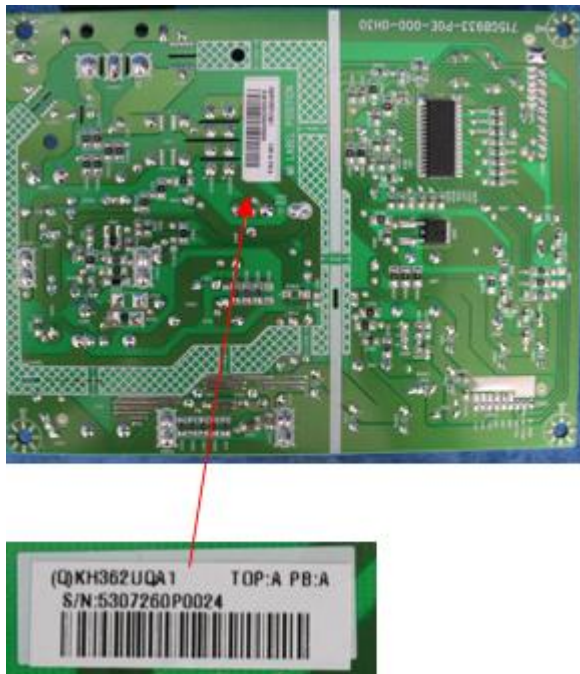
- ▲ Prepare the monitor for disassembly. See Preparation for disassembly on page 9.

Remove the power board:

- 1) The HP X27qc power board connector position is as follows:



- 2) Locate the part number location on the board.



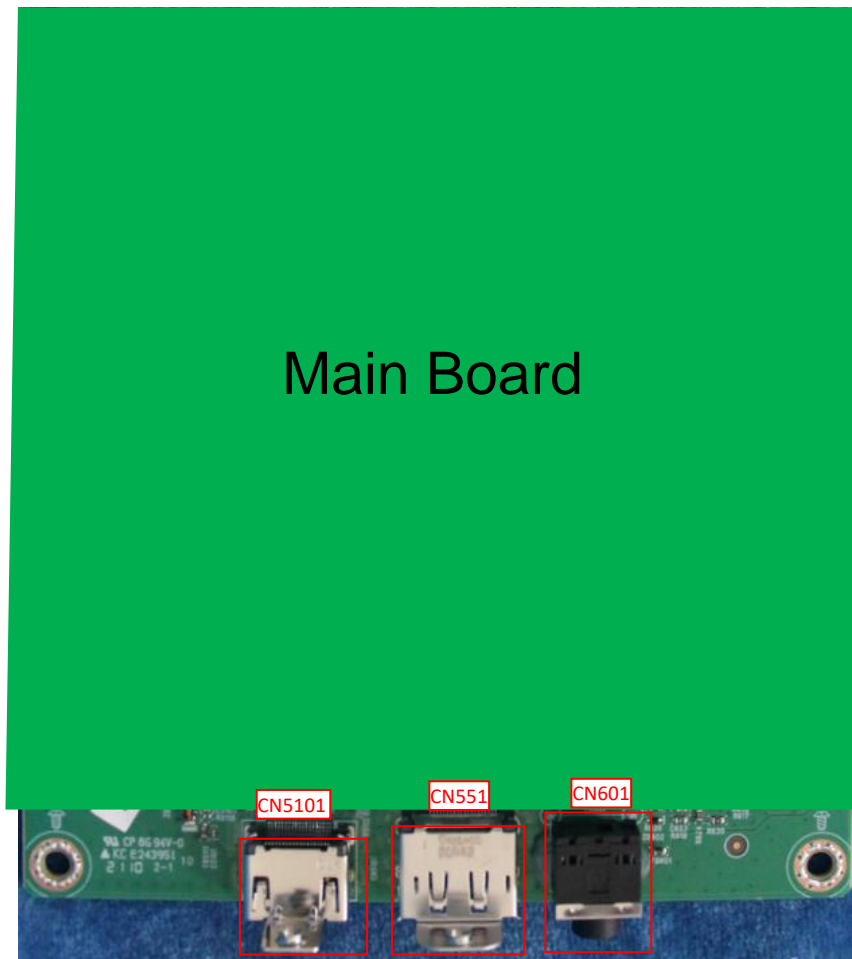
Connector repair

This procedure includes HDMI, DP and AUDIO connectors.

The connectors are on the main board (board part number CBPRPA8HPQ8).

The connectors identifiers are as follows:

Connector	Location
HDMI	CN5101
DP	CN551
AUDIO	CN601



Before repairing connectors, follow these steps:

- ▲ Prepare the monitor for disassembly. See [Preparation for disassembly](#) on page 9.

IMPORTANT:

- **Repair Condition: Connector repair is only for out of warranty.**
- **Repairing must operate by professional repairers (Note) in repair center, not applicable for end user.**
- **Electrostatic protection is required when component replacement is required.**
- **The monitor meets ROHS, please use Lead-free solder wire for soldering.**
- **If Connector need to replace, must check specification and part number whether match the BOM and location.**
- **If connector need to replace, please insert new parts carefully because the near pin may cause short circuit by inappropriate operate.**
- **DO NOT allow any liquid on the board. Water and moisture may cause short-circuit to the electronic components and lead to malfunctions.**
- **The fusion point of Lead-Free solder is requested. Repairing with conventional lead wire may cause damage.**
- **Work quickly to avoid overheating the circuit board as soon as you confirm the steady soldering condition.**
- **Keep the soldering iron tip clean and well tinned and when replacing parts.**
- **A close inspection of the circuit board revealed look in good condition.**
- **After repaired, must connect source to each port to check Main board function is ordinary.**

Note: (The requirement of professional repairers' regulation by ERP lot5)

- 1) The professional repairer has the technical competence to repair electronic displays and complies with the applicable regulations for repairers of electrical equipment in the Member States where it operates. Reference to an official registration system as professional repairer, where such system exists in the Member States concerned, shall be accepted as proof of compliance with this point.
- 2) The professional repairer is covered by insurance covering liabilities resulting from its activity, regardless of whether this is required by the Member State.

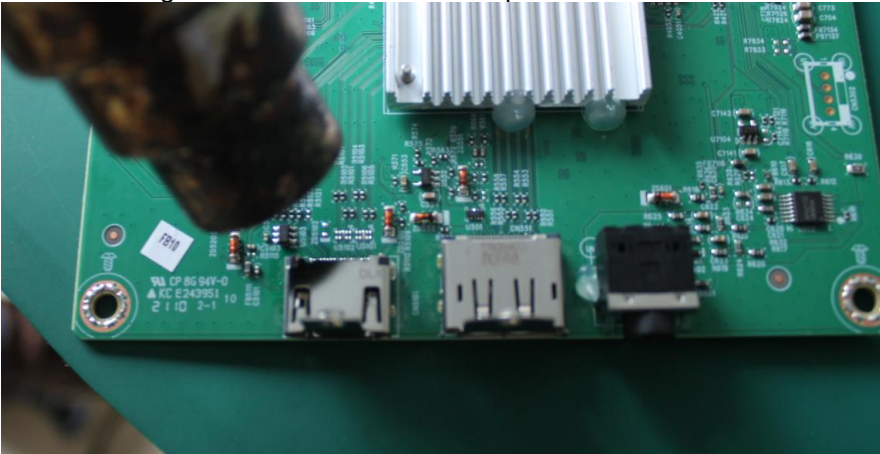
HDMI connector CN5101

Repair the HDMI connector:

- 1) Use a soldering iron and a de-soldering pump to remove as much solder as possible from the pin.



- 2) Use a hot air gun to melt the solder on the pins.

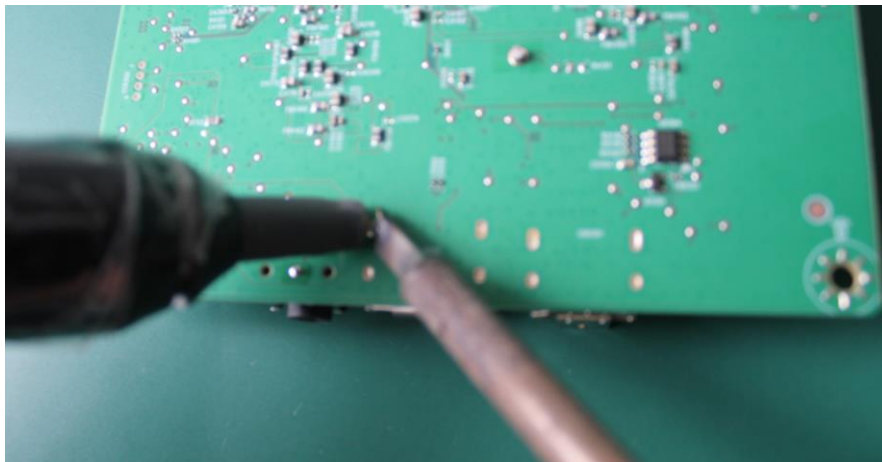


- 3) Lift the CN5101 connector from the circuit board.
- 4) Place the new component on the circuit board. Be sure that it matches the circuit board footprint.
- 5) Solder the new component.

DP connector CN551

Repair the DP connector:

- 1) Use a soldering iron and a de-soldering pump to remove as much solder as possible from the pin.



- 2) Use a hot air gun to melt the solder on the pins.



- 3) Lift the CN551 connector from the circuit board.
- 4) Place the new component on the circuit board. Be sure that it matches the circuit board footprint.
- 5) Solder the new component.

AUDIO connector CN601

Repair the AUDIO connector:

- 1) Use a soldering iron and a de-soldering pump to remove as much solder as possible from the pin.



- 2) Use a hot air gun to melt the solder on the pins.
- 3) Lift the CN601 connector from the circuit board.
- 4) Place the new component on the circuit board. Be sure that it matches the circuit board footprint.
- 5) Solder the new component.

Function test

After repair, be sure to confirm that all functions are working.

Table 4-1: Function test

Test item	Operating description	Tool used
HDMI test	Confirm whether image displays and sound plays correctly on the monitor.	Computer or DVD player
DP test	Confirm whether image displays and sound plays correctly on the monitor.	Computer or DVD player
Audio test	Change volume and balance to confirm whether volume is smooth and loud enough.	Speaker

Support and troubleshooting

The following table lists possible problems, the possible cause or each problem, and the recommended solutions.

Table 3-1: Solving common problems

Problem	Possible cause	Solution
Screen is blank or video is flashing.	Power cord is disconnected.	Connect the power cord.
	The monitor is turned off.	Press the front bezel power button. NOTE: If pressing the power button has no effect, press and hold the power button for 10 seconds to disable the Power Button Lockout feature.
	Video cable is improperly connected.	Connect the video cable properly. See Connecting the cables on page 9 for more information
	System is in sleep mode	Press any key on the keyboard or move the mouse to exit sleep mode.
Image appears blurred, indistinct, or too dark.	Video card is incompatible	Open the OSD menu and select the Input menu. Set Auto-Switch Input to Off and manually select the input
	Brightness is too low.	Open the OSD menu and select Brightness to adjust the brightness scale as needed.
"Input Signal Not Found" is displayed on the screen	The monitor video cable is disconnected.	Connect the appropriate video signal cable between the computer and monitor. Be sure that the computer power is off while you connect the video cable
"Input Signal Out of Range" is displayed on the screen	Video resolution and/or refresh rate are set higher than what the monitor supports.	Change the settings to a supported setting. See Preset display resolutions on page 34 for more information.
The monitor is off but it did not seem to enter in to sleep mode.	Auto-Sleep Mode is not turned on.	Open the OSD menu and select Power. Then select Auto-Sleep Mode and set auto-sleep to On.
"OSD Lockout" is displayed	The monitor's OSD Lockout function is enabled.	Press and hold the Menu button on the front bezel for 10
"Power Button Lockout" is displayed.	The monitor's Power Button Lockout function is enabled.	seconds to disable the OSD Lockout function. Press and hold the power button for 10 seconds to disable the Power Button Lockout function.
The desktop computer does not turn on.	The monitor is turned off.	Be sure that the monitor power cord is plugged in to an AC outlet and press the monitor power button.
	The monitor is in sleep mode.	Press any key on the keyboard or move the mouse to exit sleep mode.
	The monitor is in Power Saver mode	Open the OSD menu, select Power, and then change the power mode to Performance.

The computer turns off when the monitor enters sleep mode.	The Windows display orientation is not set properly. The monitor is in Power Saver mode	Right-click the Windows desktop and select Display settings. Click on Identify and be sure that the host computer displays are oriented left to right as they are physically arranged. Open the OSD menu, select Power, and then change the power mode to Performance.
--	--	--

Index

- components
 - front, 4
 - rear, 5
- connector repair, 15
- features, 3
- firmware updates, 2
- front components, 4
- function test, 20
- how to order parts, 8
- illustrated parts catalog, 7
- parts, 7
- parts, ordering, 8
- power board removal, 14
- precautions, 1
- preparation for disassembly, 9
- RC removal, 10
- rear components, 5
- removal
 - power board, 14
 - RC, 10
- removal and replacement procedures, 9
- returning to customer, 2
- RoHS (2002/95/EC) requirements, 2
- safety information, 1
- serial number location, 6
- service information, 1
- spare parts, 7