



# Maintenance and Service Guide

## X27q model

### **SUMMARY**

This guide provides information about spare parts, removal and replacement of parts, diagnostic tests, problem troubleshooting, and more.

© Copyright 2021 HP Development Company, L.P.

AMD is a trademark of Advanced Micro Devices, Inc. Bluetooth is a trademark owned by its proprietor and used by HP Inc. under license. NVIDIA is a trademark and/or registered trademark of NVIDIA Corporation in the U.S. and other countries. USB Type-C and USB-C are registered trademarks of USB Implementers Forum. DisplayPort and the DisplayPort logo are trademarks owned by the Video Electronics Standards Association (VESA) in the United States and other countries.

The information contained herein is subject to change without notice. The only warranties for HP products and services are set forth in the express warranty statements accompanying such products and services. Nothing herein should be construed as constituting an additional warranty. HP shall not be liable for technical or editorial errors or omissions contained herein.

First Edition: Mar. 2022

Document Part Number: M42004-X27q-MSG-V1

Assembly part number: M42004-001

#### **Product notice**

Only trained service personnel familiar with this product should service it. Before performing any maintenance or service, be sure to read “Important Safety Information”.

# Table of Contents

1. Getting started .....	2
Important safety information .....	2
Important service information and precautions .....	2
RoHS (2002/95/EC) requirements.....	3
General descriptions .....	3
Firmware updates .....	3
Before returning the repaired product to the customer .....	3
2. Monitor features.....	5
Features .....	5
Front components.....	6
Rear components.....	7
Locating the serial number and product number .....	8
3. Illustrated parts catalog.....	10
How to order parts.....	11
4. Removal and replacement procedures .....	13
Preparation for disassembly.....	13
Rear cover .....	13
Power board .....	17
Connector repair.....	19
Audio connector M1 .....	20
HDMI connector J2 .....	20
DP connector J3.....	21
Function test.....	22
Table 4-1: Function test .....	22
Support and troubleshooting .....	23

---

# 1. Getting started

Read this chapter to learn about safety information and where to find additional HP resources.

## Important safety information

Carefully read the cautions and notes within this document to minimize the risk of personal injury to service personnel. The cautions and notes are not exhaustive. Proper service methods are important to the safe, reliable operation of equipment. Improper service methods can damage equipment.

The service procedures recommended and described in this service manual provide effective methods of performing service operations. Service engineers should have prior repair knowledge and experience as well as appropriate training for the product before performing service procedures.

- Be sure your working environment is dry and clean and meets all government safety requirements.
- Be sure that other persons are safe while you are servicing the product.
- Do not perform any action that can cause a hazard to the customer or make the product unsafe.
- Use proper safety devices to ensure your personal safety.
- Always use approved tools and test equipment for servicing.
- Never assume the product's power is disconnected from the main power supply. Check that it is disconnected before opening the product's cabinet.
- Modules containing electrical components are sensitive to electrostatic discharge (ESD). Follow ESD safety procedures while handling these parts.
- Some products contain more than one battery. Do not disassemble or expose a battery to high temperatures, such as throwing into fire, or the battery may explode.
- Refer to government requirements for battery recycling or disposal.

This information provides general service information for the monitor. Adherence to the procedures and precautions is essential for proper service.

---

**IMPORTANT:** Only trained service personnel who are familiar with this HP product should perform service or maintenance for it. Before performing any service or maintenance, personnel must read the important safety information.

---

**IMPORTANT:** You must disconnect the power cord from the power source before opening the monitor to prevent component damage.

---

## Important service information and precautions

- Repair must be performed by professional service technicians in a repair center. End users should not perform these procedures.
- Please note during servicing that the primary side is the high voltage area.
- This monitor meets ROHS requirements. Be sure to use lead-free solder wire when soldering.
- If you must change a capacitor, be sure to match the polarity as printed on the PCB.
- If you must replace a capacitor, make sure the specification and part number match the BOM and location.

- If you must replace a capacitor, insert new parts carefully to avoid a short circuit caused by the near pin.
- Do not get the board wet. Water and moisture can cause a short circuit that causes malfunctions.
- To avoid damage, be sure to use lead-free solder.
- When soldering, work quickly to avoid overheating the circuit board.
- Keep the soldering iron tip clean and well tinned when replacing parts.
- After repair, perform a close inspection of the circuit board to confirm it is in good condition.
- After repair, perform a function test to confirm the power supply is working properly.

#### **ERP Lot5 requirement**

1. A professional repairer must have the technical competence to repair electronic displays and comply with the applicable regulations for repairers of electrical equipment in the Member States where the repairer operates. Reference to an official registration system as professional repairer, where such a system exists in the Member States, shall be accepted as proof of compliance.
2. A professional repairer must have insurance that covers liabilities resulting from repairs, regardless of whether required by the Member State.

## RoHS (2002/95/EC) requirements

**Applied to all countries that require RoHS.**

The RoHS (Restriction of Hazardous Substance in Electrical and Electronic Equipment Directive) is a legal requirement by the EU (European Union) for the global electronics industry sold in the EU and other countries. Any electrical and electronics products launched in the market after June 2006 should meet this RoHS requirement. Products launched in the market before June 2006 are not required to be compliant with RoHS parts. If the original parts are not RoHS compliant, the replacement parts can be non-ROHS compliant. If the original parts are RoHS compliant, the replacement parts **MUST** be RoHS compliant.

If product service or maintenance requires replacing parts, confirm the RoHS requirement before replacement.

## General descriptions

This manual contains general information. There are two levels of service:

Level 1: Cosmetic/appearance/alignment service

Level 2: Circuit board or standard parts replacement

## Firmware updates

Firmware updates for the monitor are available at [support.hp.com](http://support.hp.com). If no firmware is posted, the monitor does not need a firmware update.

## Before returning the repaired product to the customer

Perform an AC leakage current check on exposed metallic parts to be sure the product is safe to operate without the potential of electrical shock. Do not use a line isolation transformer during this check.

Measurements that are not within specified limits present a possible shock hazard. You must check and repair the product before returning it to the customer.

---

## 2. Monitor features

This chapter provides an overview of the monitor's features.

### Features

Depending on the model, your monitor might include the following features:

- 68.6 cm (27 in) diagonal viewable screen area with 2560 × 1440 resolution, plus full-screen support for lower resolutions; includes custom scaling for maximum image size while preserving original aspect ratio.
- preserving original aspect ratio
- Liquid crystal display (LCD) with active matrix and in-plane switching (IPS) **Swivel and height adjustment capabilities**
- Wide color gamut to provide coverage of s RGB color spaces
- Non-glare panel with an LED backlight
- Wide viewing angle to allow viewing from a sitting or standing position, or moving from side to side
- Tilt and height adjustment capabilities
- Pivot capability to rotate the monitor head from landscape to portrait orientation (select products only)
- Four on-screen display (OSD) buttons, three that you can reconfigure to quickly allow selection of the most commonly used operations
- On-screen display (OSD) adjustments in several languages for easy setup and screen optimization
- Color space presets for Gaming
- Energy saver feature to meet requirements for reduced power consumption
- Security cable slot on the rear of the monitor for an optional security cable

---

**NOTE:** For safety and regulatory information, refer to the Product Notices provided in your documentation kit. To access the latest user guides or manuals for your product, go to <http://www.hp.com/support> and follow the instructions to find your product. Then select **Manuals**.

---

## Front components

To identify the components on the front of the monitor, use this illustration and table.



Table 1-1: Front components and their descriptions

Component	Function
1 Menu button	Press to open the OSD menu. When the OSD menu is open, the Menu light turns on.
2 OSD buttons	When the OSD menu is open, press the buttons to navigate through the menu. The function light icons indicate the default button functions.
3 Power button	Turns the monitor on or off.



## Rear components

To identify the components on the rear of the monitor, use this illustration and table.

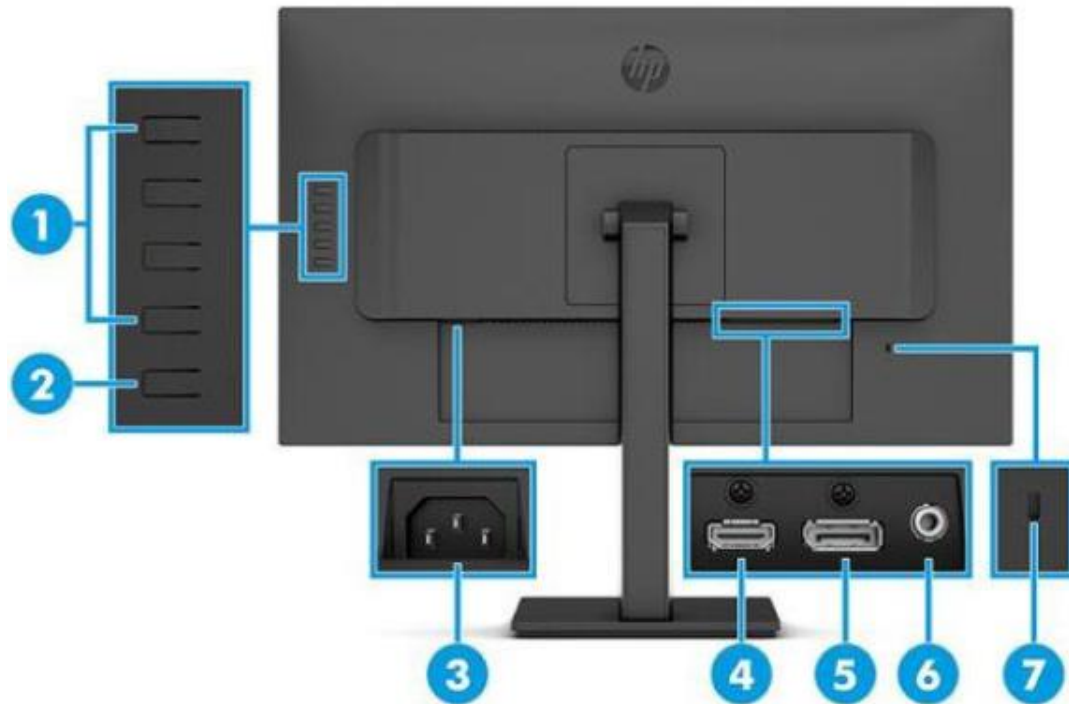


Table 1-2: Rear components and their descriptions

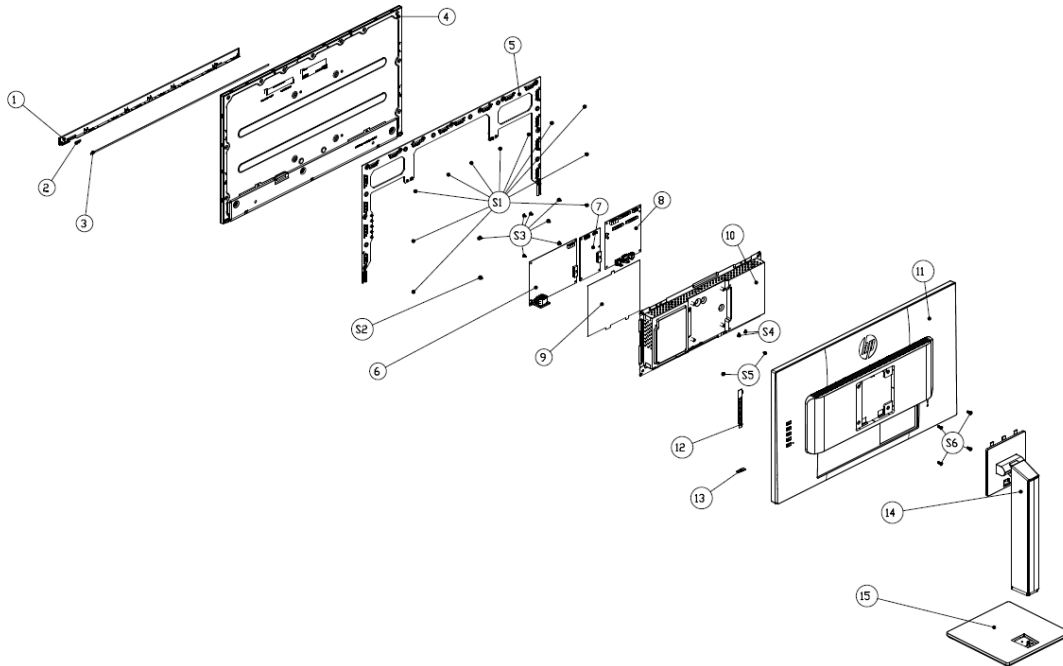
Component	Function	
1	OSD buttons	
2	Power button	Turns the monitor on or off
3	Power connector	Connects an AC adapter
4	HDMI port	Connects the HDMI cable to a source device such as a computer or game console.
5	Display Port connector	Connects the Display Port cable to a source device such as a computer or game console
6	Audio-out (headphone jack)	
7	Security cable slot	Connects an optional security cable.





### 3. Illustrated parts catalog

To identify the monitor major components, use this illustration and table.



item	part name	q'ty
1	DECO	1
2	LENS	1
3	SPONGE	1
4	X27Q PANEL	1
5	MIDFRAME	1
6	POWER BOARD	1
7	CONVERTER BOARD	1
8	SCALER BOARD	
9	MYLAR	1
10	MAINFRAME	1
11	REAR COVER	1
12	KEY BOARD	1
13	LED BOARD	1
14	STAND ASSY	2
15	BASE ASSY	1
S1	SCREW M3L4	11
S2	SCREW M4L8	1
S3	SCREW M3L7	7
S4	SCREW M3L7	2
S5	SCREW M3L3	2
S6	SCREW M4L10	4

## How to order parts

The HP authorized repair center can purchase the power board from HP.

### Power board

Description	HP spare part number	Manufacturer part number
X27q	M84747-001	<a href="#">ADPC1961KFH1</a>

Capacitors and connectors are available for purchase from the following EU distributors:

- Farnell: [Farnell UK - Electronic Components Distributor](#)
- RS Component: [Capacitors | RS Components \(rs-online.com\)](#)
- DK : <https://www.digikey.com/>

### Capacitors by distributor

Component description	Location	Component distributor	Distributor part number
470uF 20% 25V 10*12 5000hr 1600mA	C9905	RS	25ZLJ470M10X12.5
680uF 20% 35V 12*20 3000hr 2000mA	C905,C906	DK	B41856C7687M000

### Connectors by manufacturer

Component	Location identifier	Component distributor	Distributor part
-----------	---------------------	-----------------------	------------------

<b>description</b>			<b>number</b>
HDMI	J2	RS	1-1747981-1
Display Port	J3	DK	670-2430-ND/JAE
Audio	M1	RS	913-1021

---

**NOTE:** Rear cover and chassis need to be modified to hold connector. Connector may need modifications to meet functional, safety and regulatory requirements accordingly if it doesn't match exactly.

---

You can purchase cables from the HP part store at <https://partsurfer.hp.com/Search.aspx>.

---

**NOTE:** HP continually improves and changes product parts. For complete and current information about supported parts for your computer, go to <http://partsurfer.com>, select your country or region, and then follow the on-screen instructions.

---

Internal and External Power Supplies are available for purchase from the following EU distributor: EET  
<https://www.eetgroup.com/en-eu/>

---

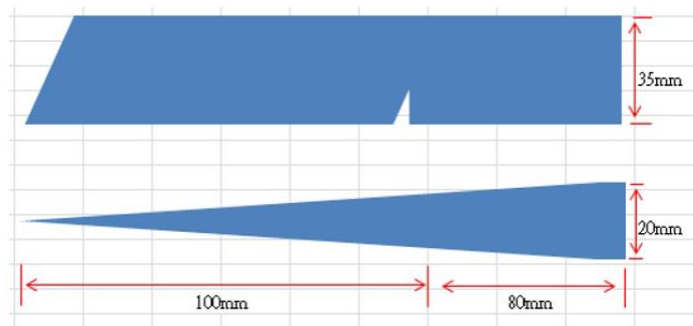
## 4. Removal and replacement procedures

Adherence to these procedures and precautions is essential for proper service.

### Preparation for disassembly

Use this information to properly prepare to disassemble and reassemble the monitor.

- 1) Read the “Important safety information” and “Important service information and precautions” sections in the “Getting started” chapter of this guide.
- 2) Clean the room for disassembly.
- 3) Identify the disassembly area.
- 4) Check the position that the monitors are to be placed along with the number of monitors. Prepare the area for material flow according to the disassembly layout.
- 5) Be sure to have the following equipment and materials:
  - Press fixture
  - Working table
  - Screwdriver
  - Knife
  - Gloves
  - Cleaning cloth
  - ESD protection
  - Scraper bar in the following dimensions:


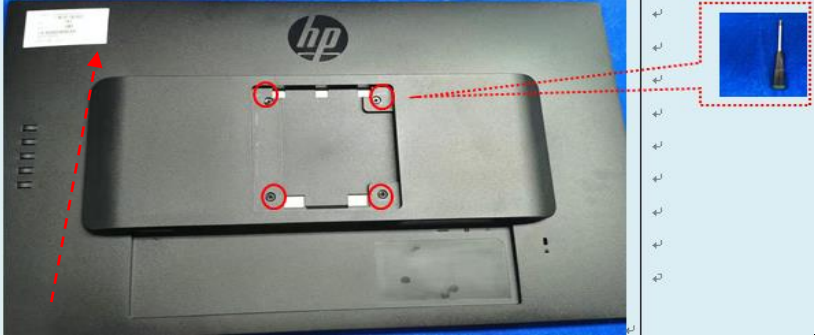



### Rear cover


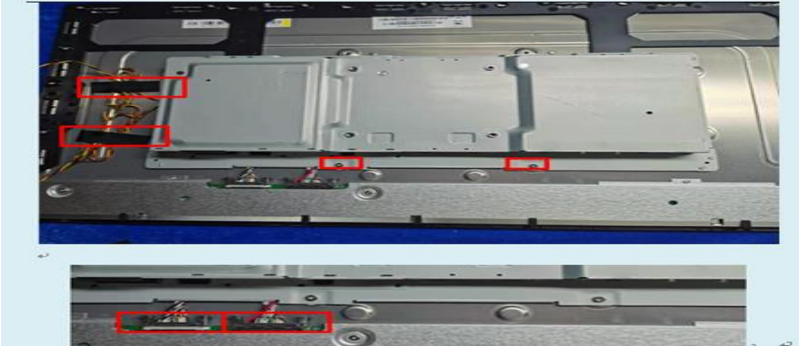
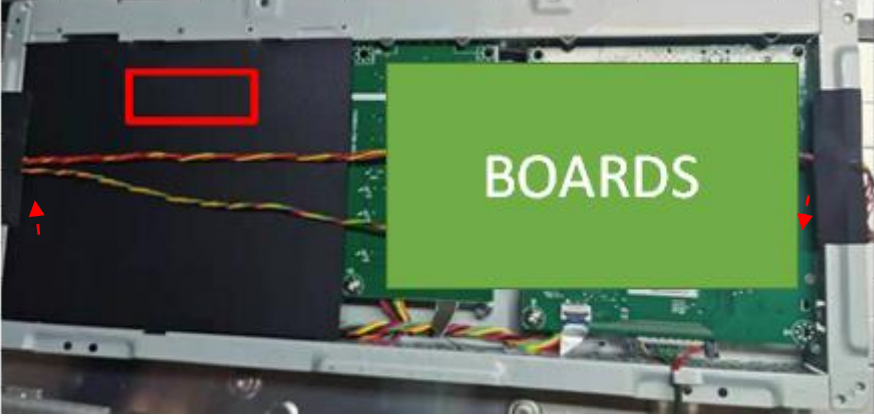
Before removing the rear cover, follow these steps:

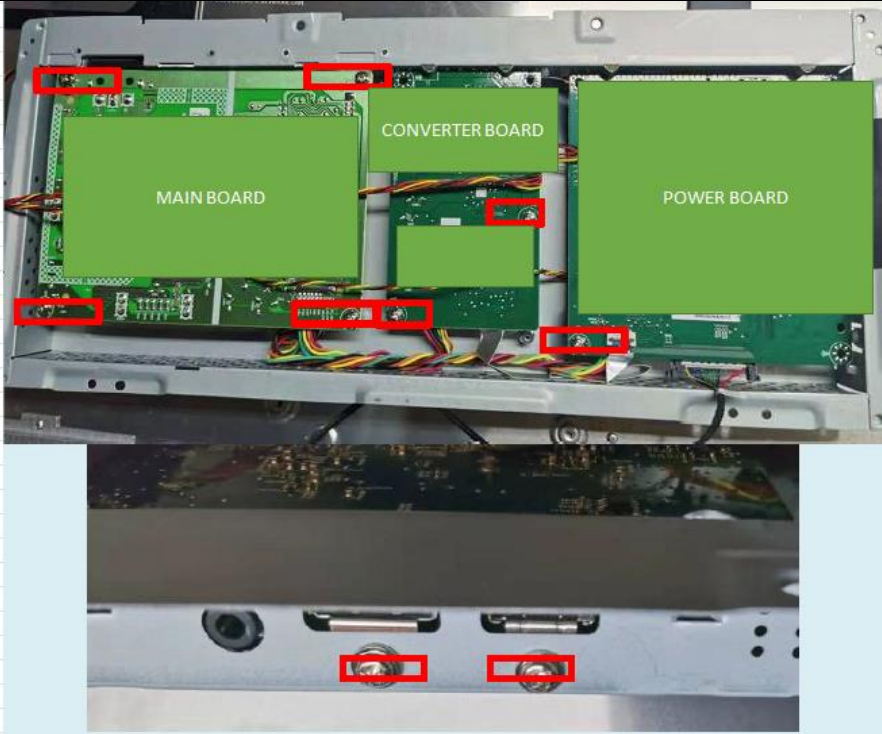
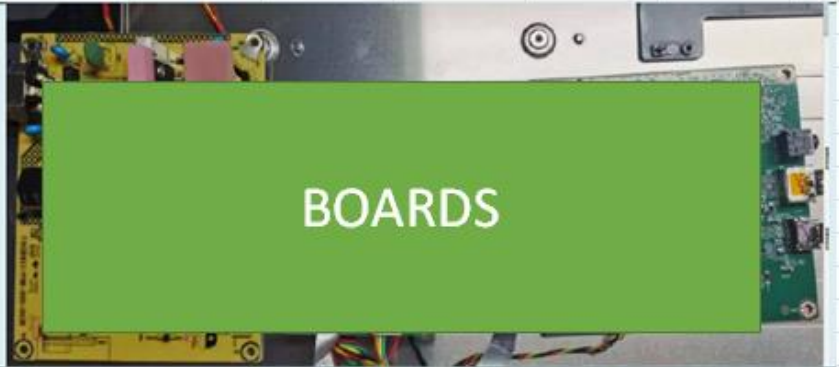

- ▲ Prepare the monitor for disassembly. See Preparation for disassembly on page 13.

Remove rear cover:

Step	Figure	Description
Remove the HINGE ASS'Y		Put the monitor face down on a matched cushion Remove the hinge assy by push the hook up
Remove the REAR_COVER		Remove the rear cover screws by the screwdriver.
Remove the rear cover		Remove the rear cover from the top side by hand  disconnect the connectors



		
		<p>Remove the mainframe screws ,disconnect the connectors and remove the tapes</p>
<p>Remove the mylar</p>		<p>Tear out all tapes</p>

<p><b>Remove the boards</b></p>		<p>Remove the screws by the screwdriver</p>
<p><b>Power board and mainboard and converter board</b></p>		
<p><b>Remove the middle frame</b></p>		<p>Remove the screws by the screwdriver</p>

<b>Middle frame and deco</b>		
<b>panel</b>		

## Power board

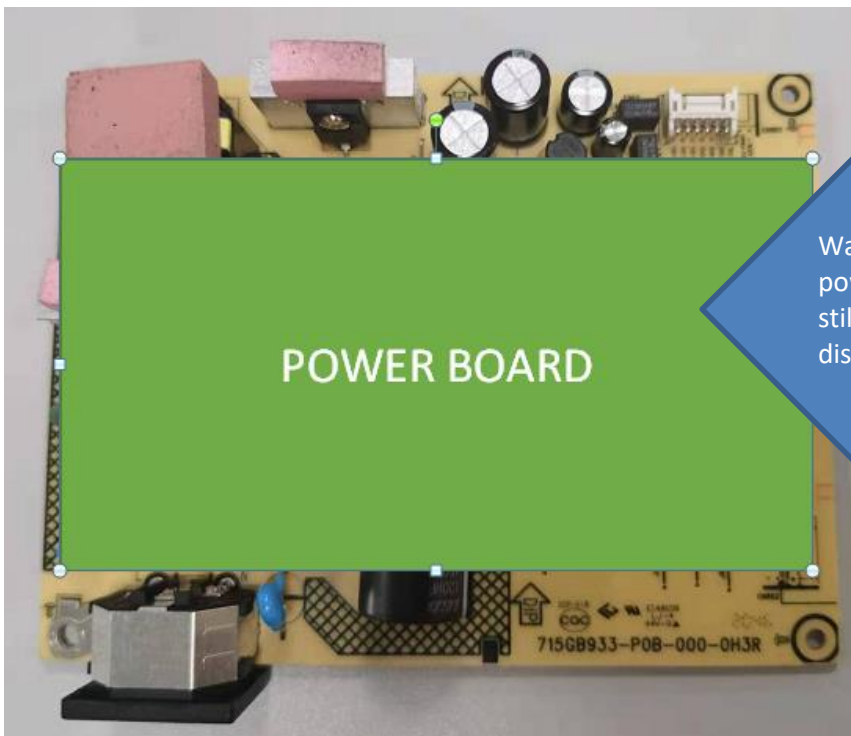
The power board part number is [ADPC1961KFH1](#)

Before removing the power board, follow these steps:

- ▲ Prepare the monitor for disassembly. See Preparation for disassembly on page 13.

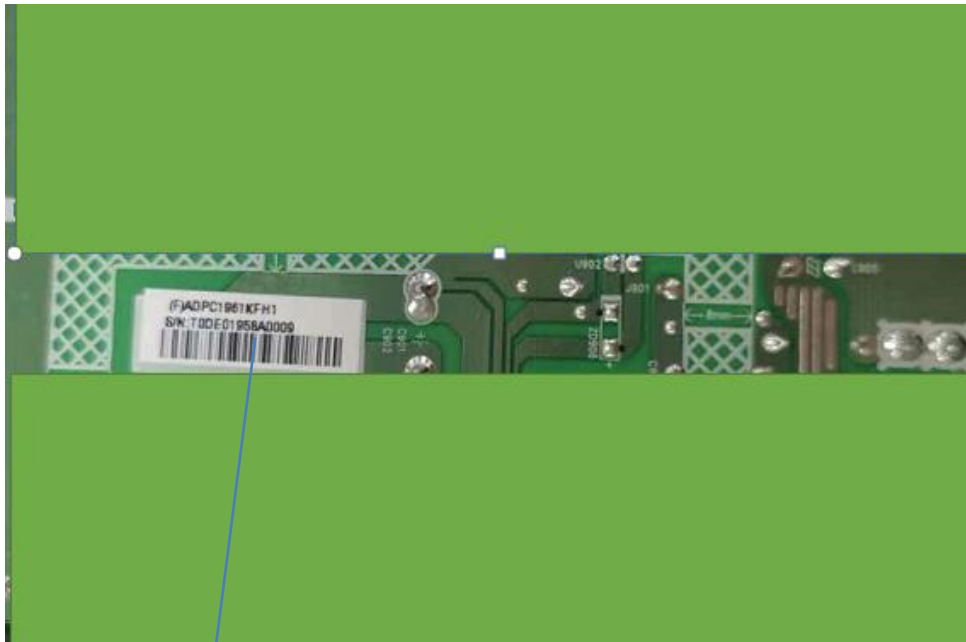
Remove the power board:

- 1) The HP X27q power board connector position is as follows:



Warning : after unplugging the power supply, the capacitance is still chaged, do not touch and discharge the capacitor

2) Locate the part number location on the board.



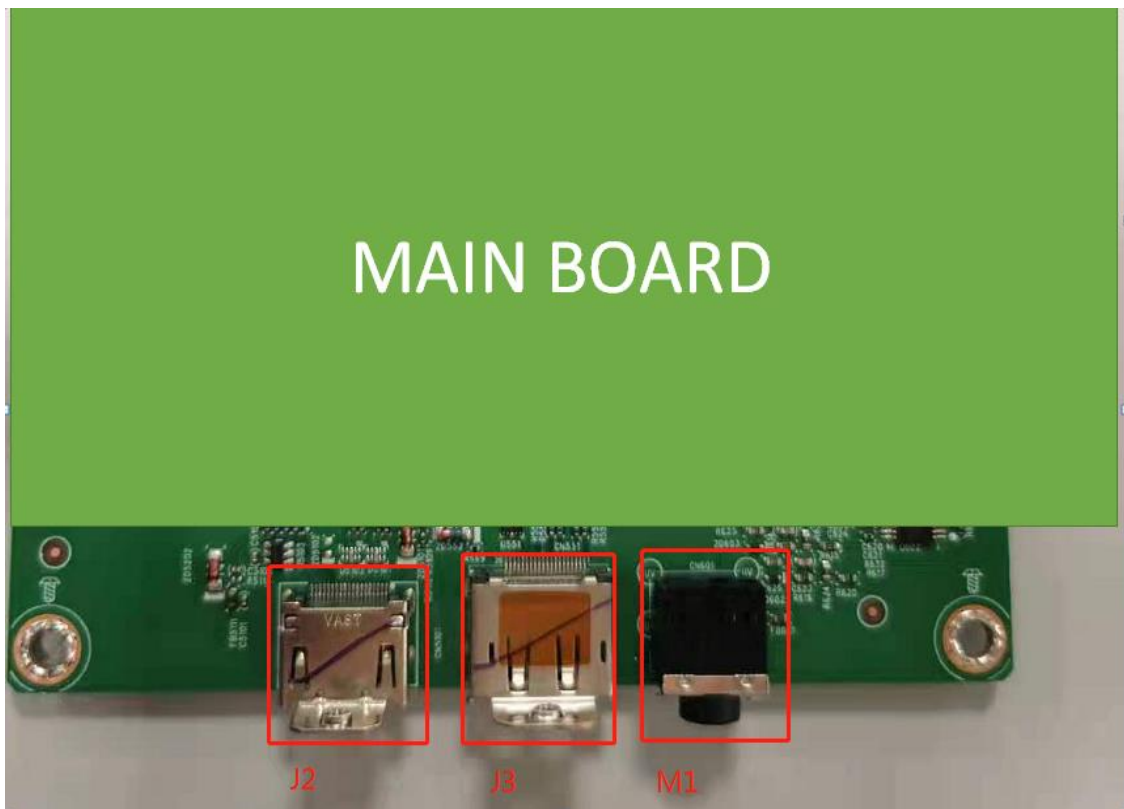
## Connector repair

This procedure includes HDMI, Display Port , USB and audio connectors.

The connectors are on the main board (board part number CBPRPA8HPF6).

The connectors identifiers are as follows:

Connector	Location
HDMI	J2
DisplayPort	J3
Audio	M1



Before repairing connectors, follow these steps:

- ▲ Prepare the monitor for disassembly. See [Preparation for disassembly](#) on page 13.

### IMPORTANT:

- **Repair Condition: Connector repair is only for out of warranty.**
- **Repairing must operate by professional repairers (Note) in repair center, not applicable for end user.**
- **Electrostatic protection is required when component replacement is required.**
- **The monitor meets ROHS, please use Lead-free solder wire for soldering.**
- **If Connector need to replace, must check specification and part number whether match the BOM and location.**
- **If connector need to replace, please insert new parts carefully because the near pin may cause short circuit by inappropriate operate.**
- **DO NOT allow any liquid on the board. Water and moisture may cause short-circuit to the electronic**

components and lead to malfunctions.

- The fusion point of Lead-Free solder is requested. Repairing with conventional lead wire may cause damage.
- Work quickly to avoid overheating the circuit board as soon as you confirm the steady soldering condition.
- Keep the soldering iron tip clean and well tinned and when replacing parts.
- A close inspection of the circuit board revealed look in good condition.
- After repaired, must connect source to each port to check Main board function is ordinary.

**Note:** (The requirement of professional repairers' regulation by ERP lot5)

1) The professional repairer has the technical competence to repair electronic displays and complies with the applicable regulations for repairers of electrical equipment in the Member States where it operates. Reference to an official registration system as professional repairer, where such system exists in the Member States concerned, shall be accepted as proof of compliance with this point.

2) The professional repairer is covered by insurance covering liabilities resulting from its activity, regardless of whether this is required by the Member State.

## Audio connector M1

Repair the audio connector:

- 1) Use a hot air gun to melt the solder on the pins. Pin solder with soldering iron and absorber. You can gently push down with the soldering iron once everything is molten to move the M1 out of the through holes.

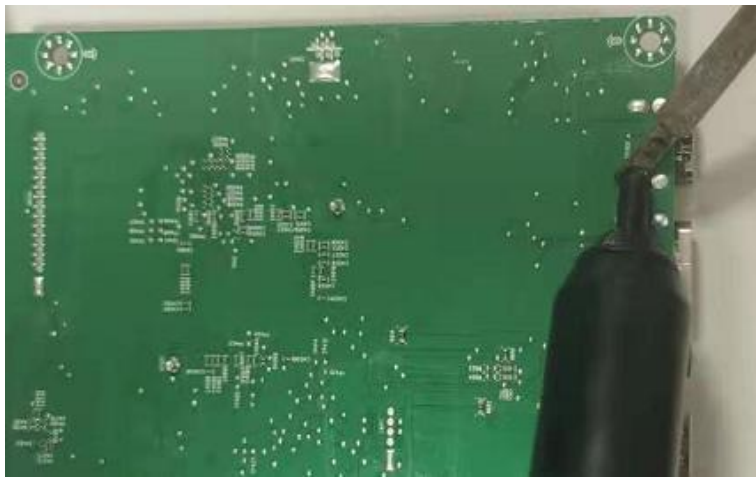


- 2) Lift the M1 connector from the PCB.
- 3) Place the new component on the PCB. Be sure that it matches the PCB footprint.
- 4) Solder the new component.

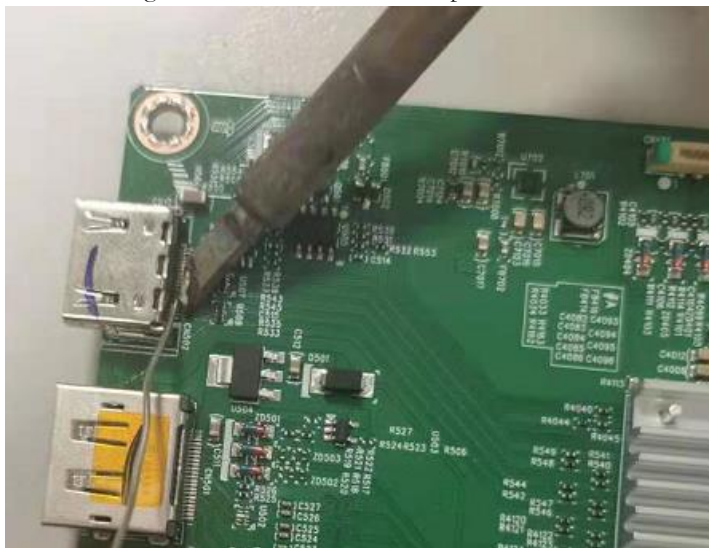
## HDMI connector J2

Repair the HDMI connector:

- 1) Use a soldering iron and a desoldering pump to remove as much solder as possible from the pin.



- 2) Use a hot air gun to melt the solder on the pins.



- 3) Lift the J2 connector from the PCB.
- 4) Place the new component on the PCB. Be sure that it matches the PCB footprint.
- 5) Solder the new component.

## DP connector J3

Repair the DP connector:

- 1) Use a soldering iron and a desoldering pump to remove as much solder as possible from the pin.



- 2) Use a hot air gun to melt the solder on the pins.



- 3) Lift the J3 connector from the PCB.
- 4) Place the new component on the PCB. Be sure that it matches the PCB footprint.
- 5) Solder the new component.

## Function test

Table 4-1: Function test

Test item	Operating description	Tool used
HDMI test	Confirm whether image displays and sound plays correctly on the monitor	Computer or DVD player
DP test	Confirm whether image displays and sound plays correctly on the monitor	Computer or DVD player
Audio test	Change volume and balance to confirm whether volume is smooth and loud enough	Speaker



## Support and troubleshooting

The following table lists possible problems, the possible cause or each problem, and the recommended solutions.

**Table 4-2:** Solving common problems

<b>Problem</b>	<b>Possible cause</b>	<b>Solution</b>
Screen is blank or video is flashing.	Power cord is disconnected.	Connect the power cord.
	Monitor is off.	Power the power button. NOTE: If pressing the Power button has no effect, press and hold the power button for 10 seconds to disable the Power button lockout feature.
	Video cable is improperly connected.	Connect the video cable properly.
	System is in Sleep mode.	Press any key on the keyboard or move the mouse to exit Sleep mode.
	Video card is incompatible.	Open the OSD menu and select the Input Control menu. Set Auto-Switch Input to Off and manually select the input
Image appears blurred, indistinct, or too dark.	Brightness is too low.	Open the OSD menu and select Brightness to adjust the brightness scale as needed.
Check Video Cable is displayed on screen.	Monitor video cable is disconnected.	Connect the appropriate video signal cable between the computer and monitor. Be sure that the computer power is off while you connect the video cable.
Input Signal Out of Range is displayed on screen.	Video resolution and/or refresh rate are set higher than what the monitor supports.	Change the settings to a supported setting.
The monitor is off, but it did not seem to enter into Sleep mode.	The monitor's power saving control is disabled.	Open the OSD menu and select Power Control > Auto-Sleep Mode and set auto-sleep to On.
On-Screen Menus are Locked is	The monitor's OSD lock function is enabled.	Press and hold the Menu button on the front bezel to

---

displayed.

10 seconds to disable the OSD lockout function.

---

Power Button is      The monitor's power button is locked.  
Locked is  
Displayed

Press and hold the power button for 10 seconds to disable the power button lock function.

---