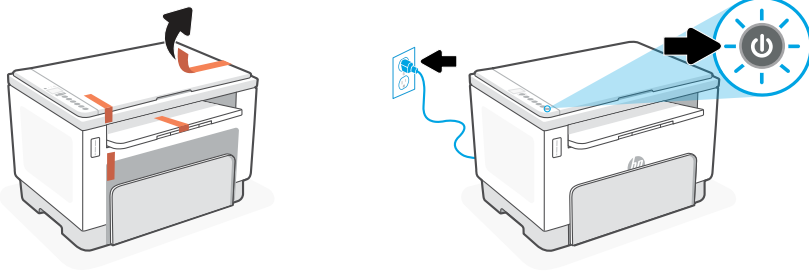


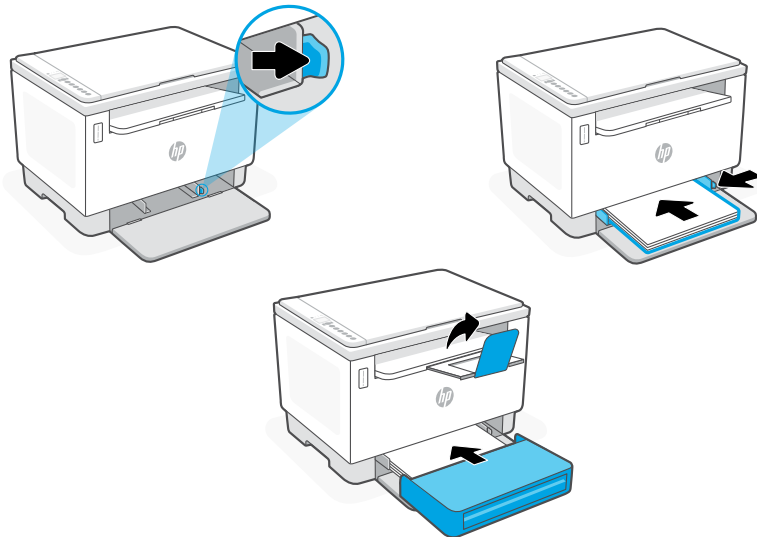


1



Remove all packaging and tape. Plug in and power on the printer.

2



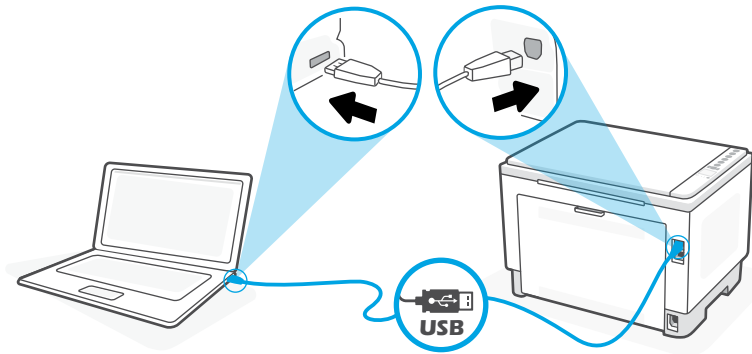
Adjust guides, load paper and slide the tray cover into place. Open the output tray extender.

3



123.hp.com

Install the **required** HP Smart software from **123.hp.com** on a computer.



Connect the printer to a computer using a USB cable.



* See **Reference Guide** for USB connection troubleshooting and tips.

Get help with setup

Find setup information and videos online.

hp.com/support/printer-setup





The Apple logo is a trademark of Apple Inc., registered in the U.S. and other countries. App Store is a service mark of Apple Inc. Android, Google Play, and the Google Play logo are trademarks of Google Inc.
© Copyright 2021 HP Development Company, L.P.



381U3-90013

Printed in Vietnam