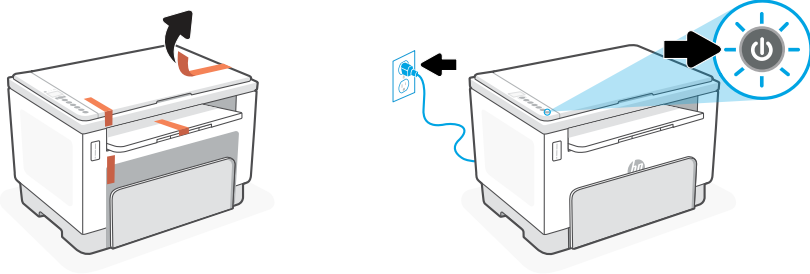


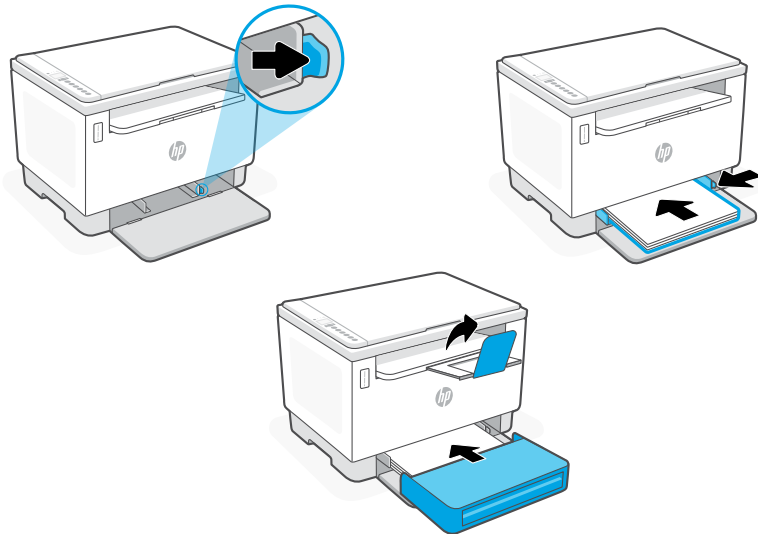


1



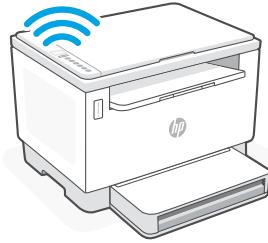
Remove all packaging and tape. Plug in and power on the printer.

2



Adjust guides, load paper and slide the tray cover into place. Open the output tray extender.

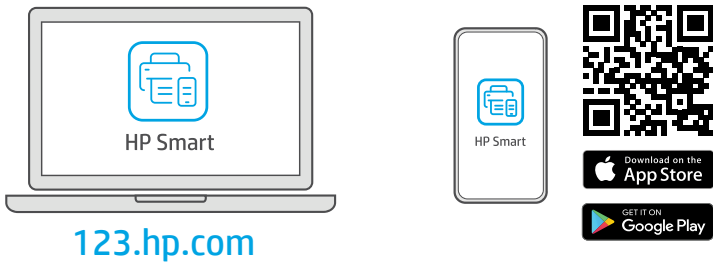
# 3



For wireless setup, do not connect an Ethernet cable.

---

# 4



Install the **required** HP Smart software from **123.hp.com** or your app store on a computer or mobile device.

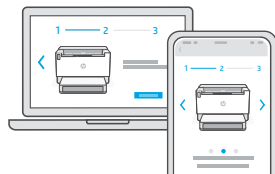
# 5

Follow instructions in HP Smart to connect the printer to a network and finish setup.



**See Reference Guide for additional Wi-Fi troubleshooting and tips.**

If connecting the printer to Wi-Fi, your computer or mobile device must be near the printer during setup.



**Get help with setup**

Find setup information and videos online.

[hp.com/support/printer-setup](https://hp.com/support/printer-setup)





---

The Apple logo is a trademark of Apple Inc., registered in the U.S. and other countries. App Store is a service mark of Apple Inc. Android, Google Play, and the Google Play logo are trademarks of Google Inc.

© Copyright 2021 HP Development Company, L.P.



381U4-90010

Printed in Vietnam