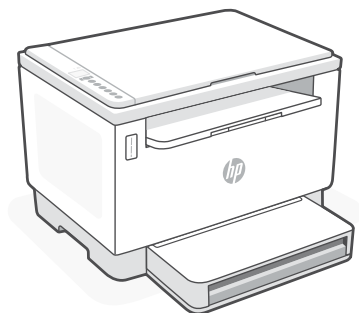


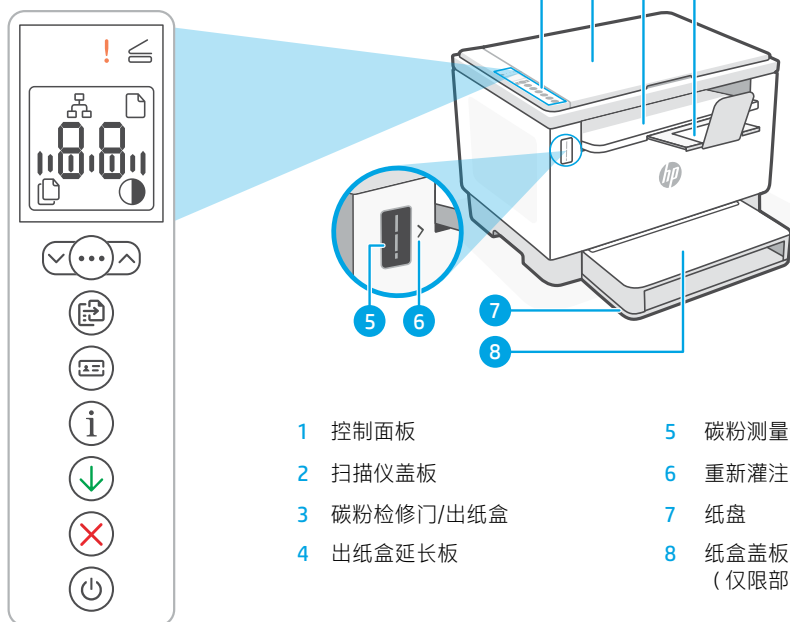
## Reference Guide



## HP LaserJet Tank MFP 260x series



# 打印机功能



- |             |                    |
|-------------|--------------------|
| 1 控制面板      | 5 碳粉测量计            |
| 2 扫描仪盖板     | 6 重新灌注碳粉指示器        |
| 3 碳粉检修门/出纸盒 | 7 纸盘               |
| 4 出纸盒延长板    | 8 纸盒盖板<br>(仅限部分机型) |

## 按钮和指示灯

## 显示屏图标



**以太网连接状态**



**纸张问题**

放入纸张/检查是否卡纸。



**字符显示**

份数、错误代码、对比度等级。参阅在线使用手册。



**份数指示器**



**变淡/变暗（对比度）图标**



**警示按钮/指示灯**



**打开扫描仪盖指示灯**



**打开扫描仪盖指示灯**

打开盖子并翻转身份证以复印第二面。



**复印选项按钮/指示灯**



**身份证复印按钮/指示灯**



**信息按钮/指示灯**

按下即可打印打印机设置  
和状态的摘要。



**重新开始按钮/指示灯**

亮起时按下即可继续完成作业。



**取消按钮/指示灯**



**电源按钮/指示灯**

正在启动或处理作业时闪烁。

有关指示灯和错误的详细信息，  
请访问 [hp.com/support](http://hp.com/support)

# 检查碳粉余量

打印机在购买时已预灌注碳粉。HP 碳粉重新灌注套件 (TRK) 提供 2 种选项：标准容量和大容量。碳粉测量计上测量条的值为估算碳粉量，可能与实际碳粉量略有不同。

检查碳粉测量计指示器，确定何时添加碳粉。要购买 HP 原装碳粉包，请访问 [hp.com/buy/supplies](http://hp.com/buy/supplies) 或咨询当地的 HP 分销商。



标准 TRK



大容量 TRK

## 碳粉余量指示器状态

### 查看碳粉余量

碳粉几乎装满



碳粉已部分耗尽



碳粉余量低，但仍可继续打印。



碳粉余量极低。无法打印。



碳粉余量极低时，箭头呈琥珀色闪烁。

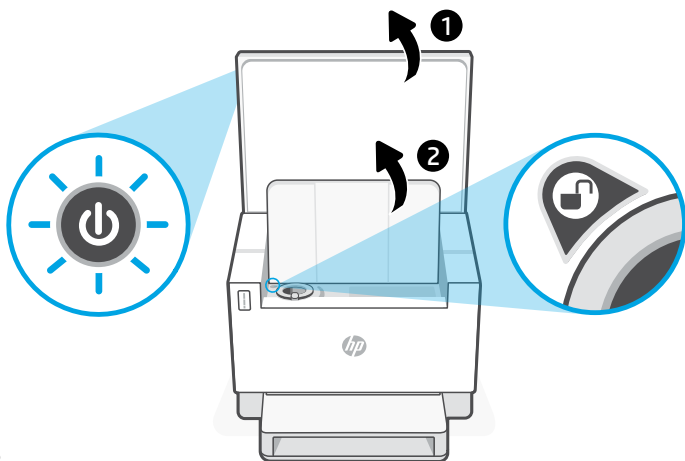
### 加装智能闪充粉盒 (TRK)

不能再添加碳粉

可加装 1 个标准 TRK

可加装 1 个大容量 TRK 或 2 个标准 TRK。

必须加装 1 个大容量 TRK 或 2 个标准 TRK。



只有在端口指示器显示解锁图标 (🔓) 时，才能添加碳粉。有关更多信息，请参阅用户指南，网址：[hp.com/support](http://hp.com/support)

# 连接帮助与提示

如果软件在设置过程中未能找到打印机，请检查以下情况以解决问题。

## 潜在问题

计算机已连接至虚拟专用网络 (VPN) 或远程工作网络

## 解决方案

请先断开 VPN，然后再安装 HP Smart 软件。与 VPN 连接时，无法通过 Microsoft Store 安装应用。完成打印机设置后再连接 VPN。

**注意：**在断开 VPN 连接之前，请考虑您的位置和 Wi-Fi 网络的安全性。



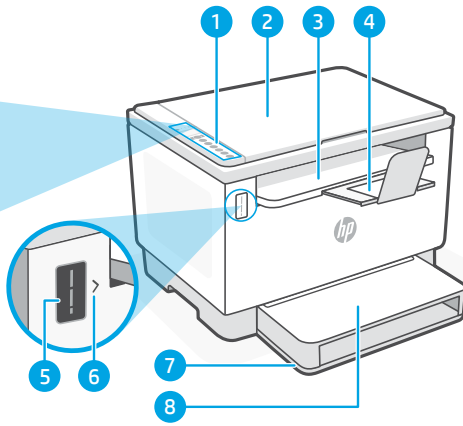
## 帮助和支持

如需了解打印机故障排除相关信息和观看视频，请访问 HP 支持网站。输入您的型号名称以查找打印机。



[hp.com/support](https://hp.com/support)






# Printer features












- 1 Control Panel
- 2 Scanner lid
- 3 Toner access door / Output tray
- 4 Output tray extender
- 5 Toner gauge
- 6 Refill toner indicator
- 7 Paper tray
- 8 Tray cover (some models only)

## Button and lights

## Display icons

-  **Ethernet connection status**
-  **Paper problem**  
Load paper/check for jams.
-  **Character display**  
Number of copies, error code, contrast levels. See the online user guide.
-  **Number of Copies indicator**
-  **Lighter/Darker** (contrast) icon

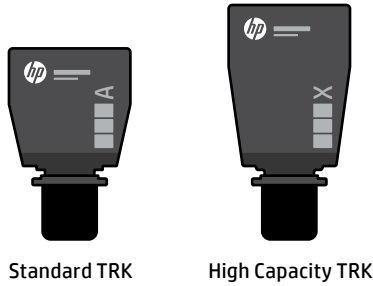
For more information on lights and errors, visit [hp.com/support](http://hp.com/support)

-  **Attention light**
-  **Open Scanner Lid light**  
Open lid and turn over ID card to copy second side.
-  **Copy Options** button/light
-  **Start Copy** button/light
-  **ID Card Copy** button/light
-  **Information** button/light  
Press to print a summary of printer settings and status.
-  **Resume** button/light  
Press when lit to continue a job.
-  **Cancel** button/light
-  **Power** button/light  
Blinks when starting or processing a job.

# Check toner level

The printer is pre-filled with toner at purchase. HP toner refill kits are available in 2 options: Standard and High capacity. The value of bars on the toner gauge are estimated toner levels and may vary slightly from the actual toner level.

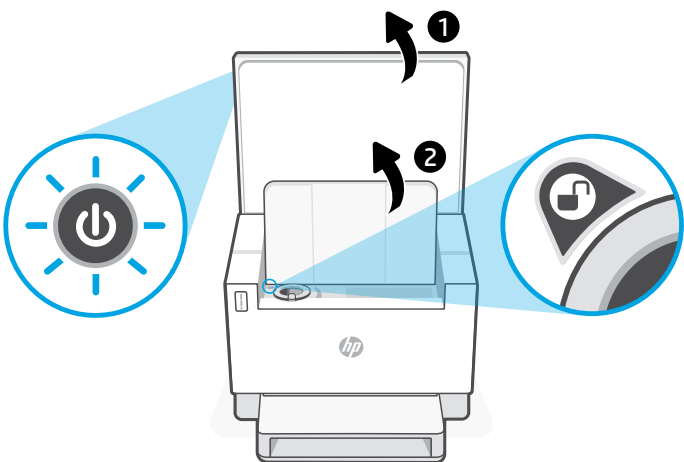
Check the toner gauge indicator to determine when to add toner. Purchase original HP toner packs from [hp.com/buy/supplies](http://hp.com/buy/supplies) or your local HP reseller.



## Toner level indicator states

View toner level	Toner is almost full	Toner is partly depleted	Toner level is low, but printing can continue.	Toner level is very low. Unable to print.
<b>Add toner reload kit (TRK)</b>	No more toner must be added	1 Standard TRK can be added	1 High Capacity TRK or 2 Standard TRK can be added.	1 High Capacity TRK or 2 Standard TRK must be added.

Arrow blinks amber when the toner level is very low.



Toner can be added only when the port indicator shows an **unlock** icon (🔓). For more information, see the User Guide at [hp.com/support](http://hp.com/support)

# Help and tips for connectivity

If the software is unable to find your printer during setup, check the following conditions to resolve the issue.

Potential Issue	Solution
Computer connected to a Virtual Private Network (VPN) or remote work network	Disconnect from a VPN before installing HP Smart software. You can't install apps from the Microsoft Store when connected to a VPN. Connect to the VPN again after finishing printer setup. <b>Note:</b> Consider your location and the security of the Wi-Fi network before disconnecting from a VPN.



## Help and Support

For printer troubleshooting and videos, visit the HP support site. Enter your model name to find the printer.



[hp.com/support](https://hp.com/support)

The information herein is subject to change without notice.











---

© Copyright 2021 HP Development Company, L.P.

Microsoft and Windows are either registered trademarks or trademarks of Microsoft Corporation in the United States and/or other countries. Mac, OS X, macOS, and AirPrint are trademarks of Apple Inc., registered in the U.S. and other countries. Android is a trademarks of Google LLC. iOS is a trademark or registered trademark of Cisco in the U.S. and other countries and is used under license.



ZHCN EN

越南印刷

Printed in Vietnam

381U0-90012