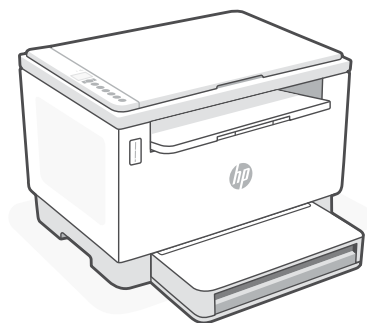
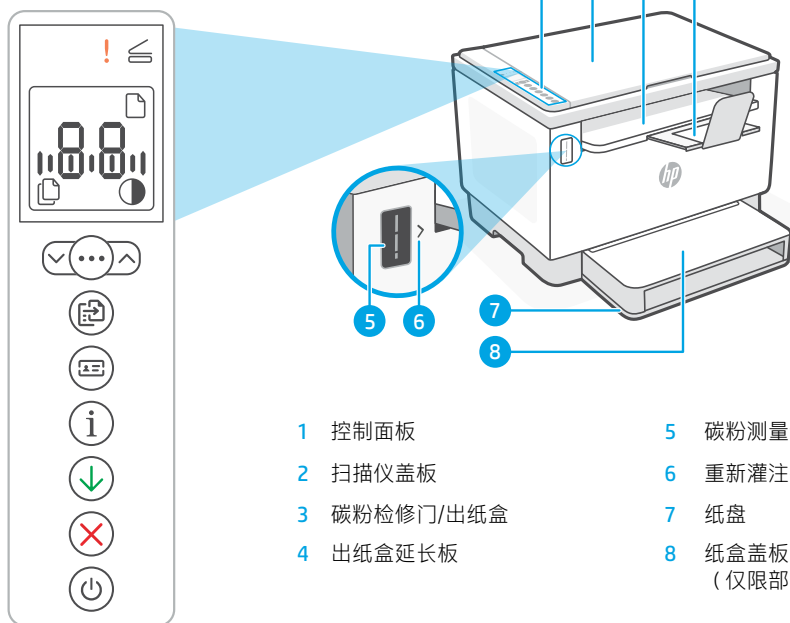


Reference Guide



HP LaserJet Tank MFP 1005 series

打印机功能



- | | |
|-------------|--------------------|
| 1 控制面板 | 5 碳粉测量计 |
| 2 扫描仪盖板 | 6 重新灌注碳粉指示器 |
| 3 碳粉检修门/出纸盒 | 7 纸盘 |
| 4 出纸盒延长板 | 8 纸盒盖板
(仅限部分机型) |

按钮和指示灯

显示屏图标



纸张问题

放入纸张/检查是否卡纸。



字符显示

份数、错误代码、对比度等级。参阅在线使用手册。



份数指示器



变淡/变暗 (对比度) 图标



警示按钮/指示灯



打开扫描仪盖 指示灯

打开盖子并翻转身份证以复印第二面。



复印选项按钮/指示灯



开始复印按钮/指示灯



身份证复印按钮/指示灯



信息按钮/指示灯

按下即可打印打印机设置
和状态的摘要。



重新开始按钮/指示灯

亮起时按下即可继续完成作业。



取消按钮/指示灯



电源按钮/指示灯

正在启动或处理作业时闪烁。

有关指示灯和错误的详细信息，
请访问 hp.com/support

检查碳粉余量

打印机在购买时已预灌注碳粉。HP 碳粉重新灌注套件 (TRK) 提供 2 种选项：标准容量和大容量。碳粉测量计上测量条的值为估算碳粉量，可能与实际碳粉量略有不同。

检查碳粉测量计指示器，确定何时添加碳粉。要购买 HP 原装碳粉包，请访问 hp.com/buy/supplies 或咨询当地的 HP 分销商。



标准 TRK



大容量 TRK

碳粉余量指示器状态

查看碳粉余量

碳粉几乎装满



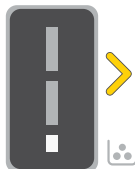
不能再添加碳粉

碳粉已部分耗尽



可加装 1 个标准 TRK

碳粉余量低，但仍可继续打印。



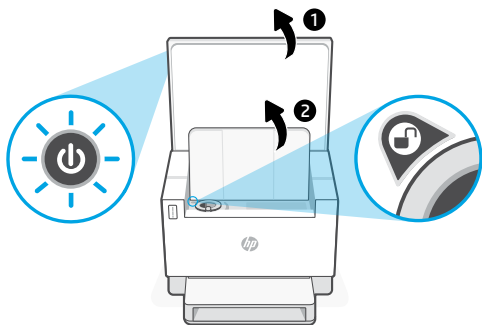
可加装 1 个大容量 TRK 或 2 个标准 TRK。


碳粉余量极低。无法打印。



碳粉余量极低时，箭头呈琥珀色闪烁。

加装智能闪充粉盒 (TRK)



只有在端口指示器显示解锁图标  时，才能添加碳粉。有关更多信息，请参阅用户指南，网址：hp.com/support



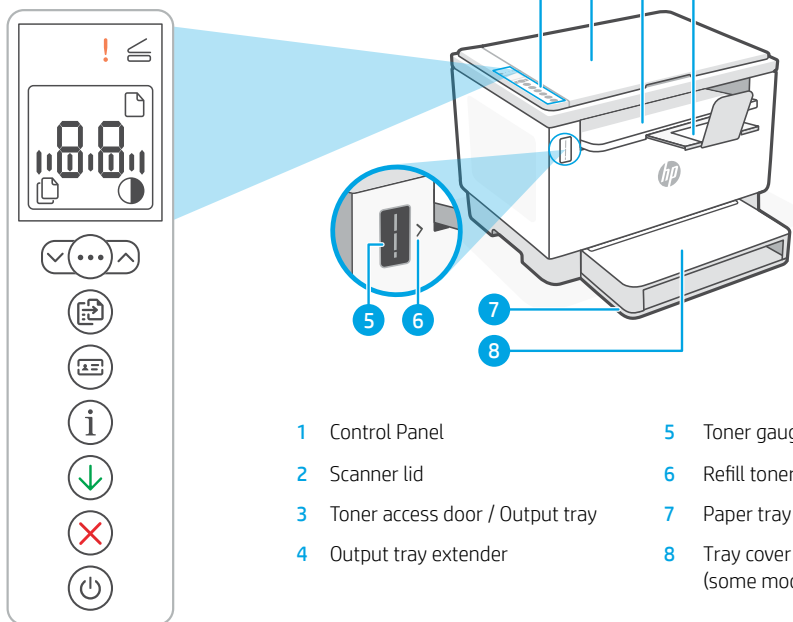
帮助和支持

如需了解打印机故障排除相关信息和观看视频，请访问 HP 支持网站。输入您的型号名称以查找打印机。



hp.com/support





Printer features












- 1 Control Panel
- 2 Scanner lid
- 3 Toner access door / Output tray
- 4 Output tray extender
- 5 Toner gauge
- 6 Refill toner indicator
- 7 Paper tray
- 8 Tray cover (some models only)

Button and lights

Display icons

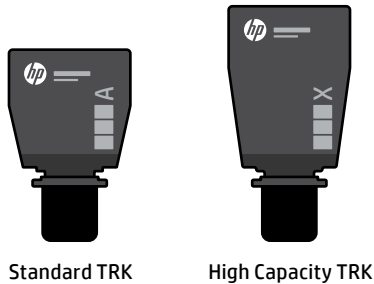
-  **Paper problem**
Load paper/check for jams.
-  **Character display**
Number of copies, error code, contrast levels. See the online user guide.
-  **Number of Copies indicator**
-  **Lighter/Darker** (contrast) icon

-  **Attention** light
-  **Open Scanner Lid** light
Open lid and turn over ID card to copy second side.
-  **Copy Options** button/light
-  **Start Copy** button/light
-  **ID Card Copy** button/light
-  **Information** button/light
Press to print a summary of printer settings and status.
-  **Resume** button/light
Press when lit to continue a job.
-  **Cancel** button/light
-  **Power** button/light
Blinks when starting or processing a job.

For more information on lights and errors, visit hp.com/support

Check toner level

The printer is pre-filled with toner at purchase. **HP toner refill kits (TRK)** are available in 2 options: Standard and High capacity. The value of bars on the toner gauge are estimated toner levels and may vary slightly from the actual toner level. Check the toner gauge indicator to determine when to add toner. Purchase original HP toner packs from hp.com/buy/supplies or your local HP reseller.



Toner level indicator states

View toner level

Toner is almost full

Toner is partly depleted

Toner level is low, but printing can continue.

Toner level is very low. Unable to print.



Arrow blinks amber when the toner level is very low.

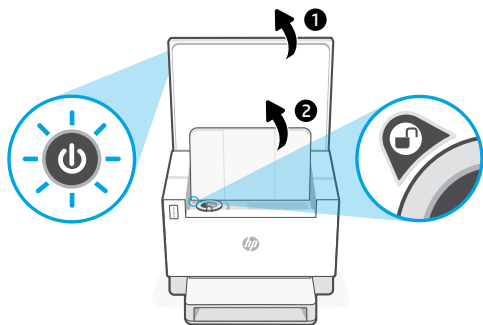
Add toner reload kit (TRK)

No more toner must be added

1 Standard TRK can be added

1 High Capacity TRK or 2 Standard TRK can be added.

1 High Capacity TRK or 2 Standard TRK must be added.



Toner can be added only when the port indicator shows an **unlock** icon (🔓). For more information, see the User Guide at hp.com/support



Help and Support

For printer troubleshooting and videos, visit the HP support site. Enter your model name to find the printer.



hp.com/support



© Copyright 2021 HP Development Company, L.P.

Microsoft and Windows are either registered trademarks or trademarks of Microsoft Corporation in the United States and/or other countries. Mac, OS X, macOS, and AirPrint are trademarks of Apple Inc., registered in the U.S. and other countries. Android is a trademarks of Google LLC. iOS is a trademark or registered trademark of Cisco in the U.S. and other countries and is used under license.



ZHCN EN

越南印刷

Printed in Vietnam

381U3-90011