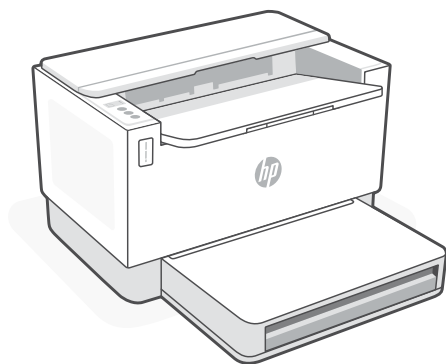


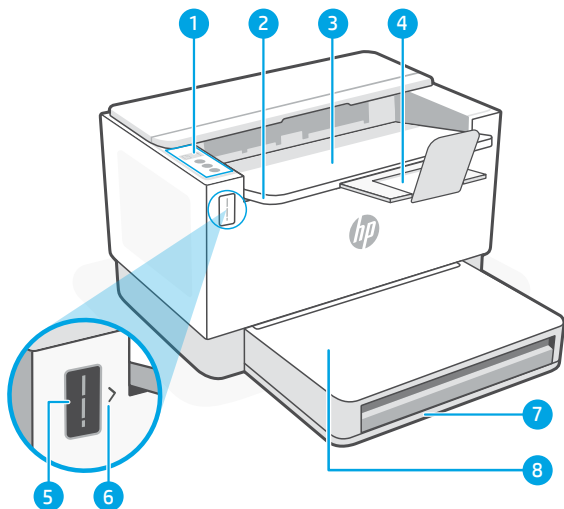
Reference Guide








HP LaserJet Tank 1020 series

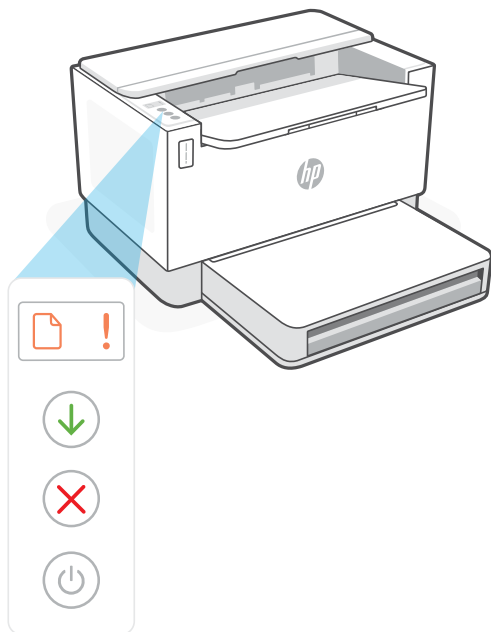
打印机功能

- 1 控制面板
- 2 碳粉检修门
- 3 出纸盒
- 4 出纸盒延长板
- 5 碳粉测量计
- 6 重新灌注碳粉指示器
- 7 纸盘
- 8 纸盒盖板
(仅限部分机型)



按钮和指示灯

-  **纸张**指示灯
缺纸或卡纸时闪烁。
-  **警示**指示灯
-  **重新开始**按钮/指示灯
亮起时按下即可继续完成作业。
-  **取消**按钮/指示灯
-  **电源**按钮/指示灯

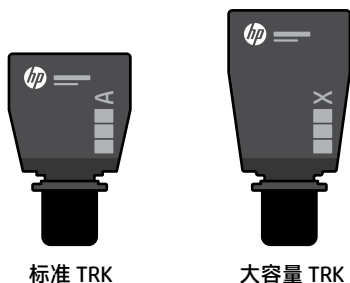


有关指示灯和错误的详细信息，请访问 hp.com/support

检查碳粉余量

打印机在购买时已预灌注碳粉。HP 碳粉重新灌注套件 (TRK) 提供 2 种选项：标准容量和大容量。碳粉测量计上测量条的值为估算碳粉量，可能与实际碳粉量略有不同。

检查碳粉测量计指示器，确定何时添加碳粉。要购买 HP 原装碳粉包，请访问 hp.com/buy/supplies 或咨询当地的 HP 分销商。



碳粉余量指示器状态

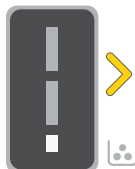
查看碳粉余量

碳粉几乎装满

碳粉已部分耗尽

碳粉余量低，但仍可继续打印。

碳粉余量极低。无法打印。



碳粉余量极低时，箭头呈琥珀色闪烁。

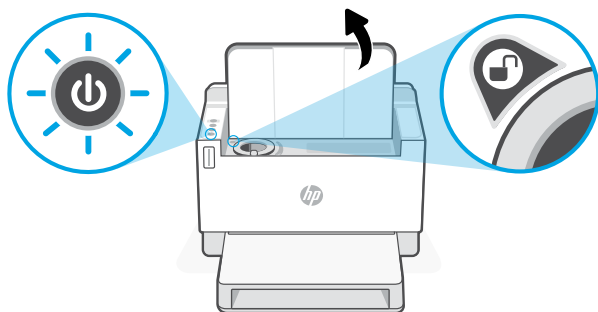
加装智能闪充粉盒 (TRK)


不能再添加碳粉

可加装 1 个标准 TRK

可加装 1 个大容量 TRK 或 2 个标准 TRK。

必须加装 1 个大容量 TRK 或 2 个标准 TRK。



只有在端口指示器显示解锁图标  时，才能添加碳粉。有关更多信息，请参阅用户指南，网址：hp.com/support



帮助和支持

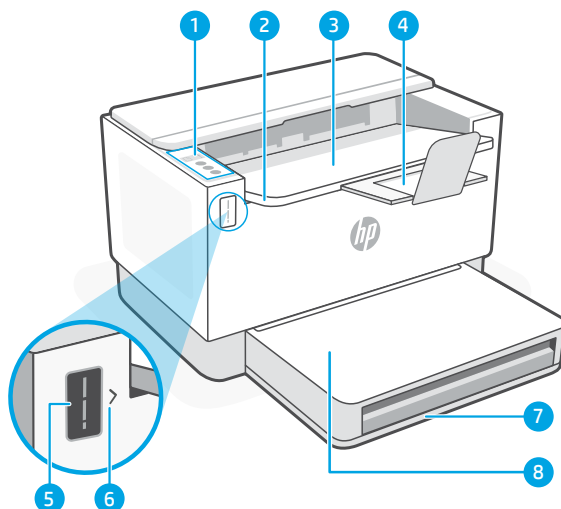
如需打印机故障排除和视频，请访问 HP 支持网站。输入您的型号名称以查找打印机。



hp.com/support

Printer features

- 1 Control panel
- 2 Toner access door
- 3 Output tray
- 4 Output tray extender
- 5 Toner gauge
- 6 Refill toner indicator
- 7 Paper tray
- 8 Tray cover (some models only)



Buttons and lights



Paper light

Blinks when out of paper or paper is jammed.



Attention light



Resume button/light

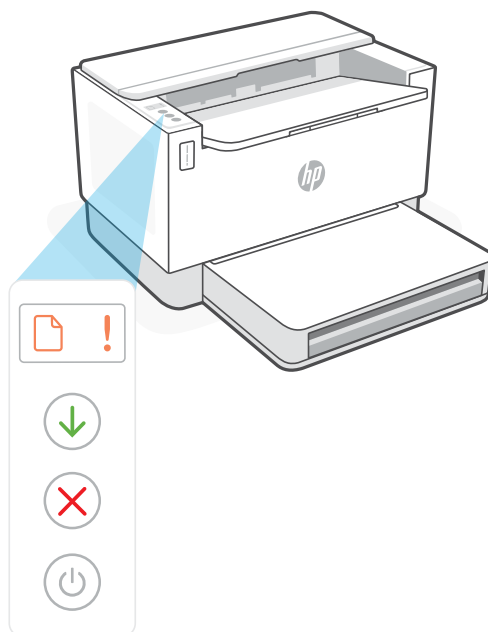
Press when lit to continue a job.



Cancel button/light



Power button/light

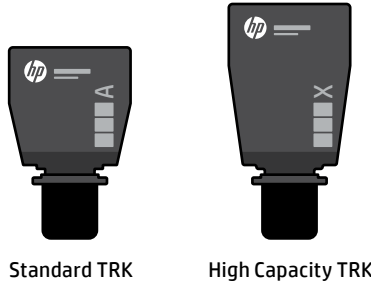


For more information on lights and errors, visit hp.com/support

Check toner level

The printer is pre-filled with toner at purchase. **HP toner refill kits (TRK)** are available in 2 options: Standard and High capacity. The value of bars on the toner gauge are estimated toner levels and may vary slightly from the actual toner level. Check the toner gauge indicator to determine when to add toner. Purchase original HP toner packs from hp.com/buy/supplies or your local HP reseller.

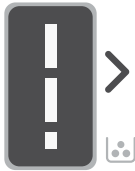
English



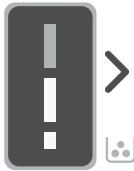
Toner level indicator states

View toner level

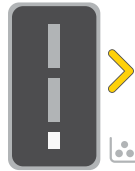
Toner is almost full



Toner is partly depleted



Toner level is low, but printing can continue.



Toner level is very low. Unable to print.



Arrow blinks amber when the toner level is very low.

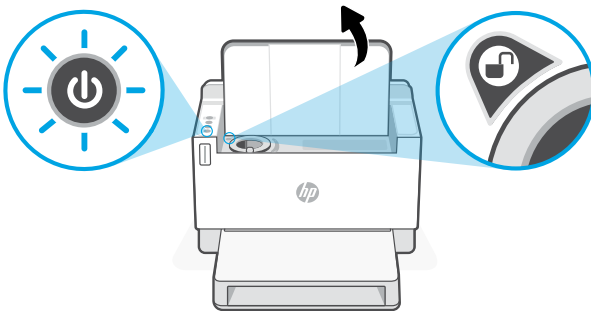
Add toner reload kit (TRK)

No more toner must be added

1 Standard TRK can be added

1 High Capacity TRK or 2 Standard TRK can be added.

1 High Capacity TRK or 2 Standard TRK must be added.



Toner can be added only when the port indicator shows an **unlock icon** (🔓). For more information, see the User Guide at hp.com/support



Help and Support

For printer troubleshooting and videos, visit the HP support site. Enter your model name to find the printer.



hp.com/support



© Copyright 2021 HP Development Company, L.P.

Microsoft and Windows are either registered trademarks or trademarks of Microsoft Corporation in the United States and/or other countries. Mac, OS X, macOS, and AirPrint are trademarks of Apple Inc., registered in the U.S. and other countries. Android is a trademarks of Google LLC. iOS is a trademark or registered trademark of Cisco in the U.S. and other countries and is used under license.



381V5-90011

ZHCN EN

越南印刷

Printed in Vietnam