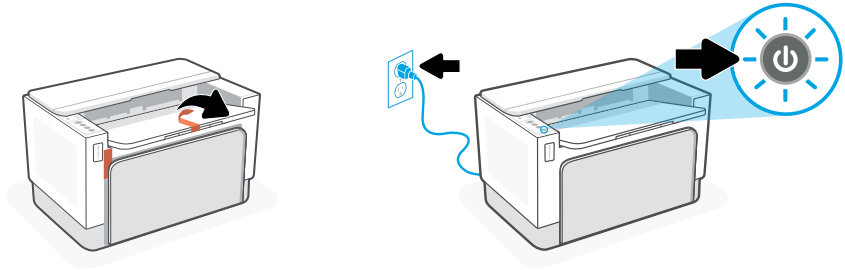


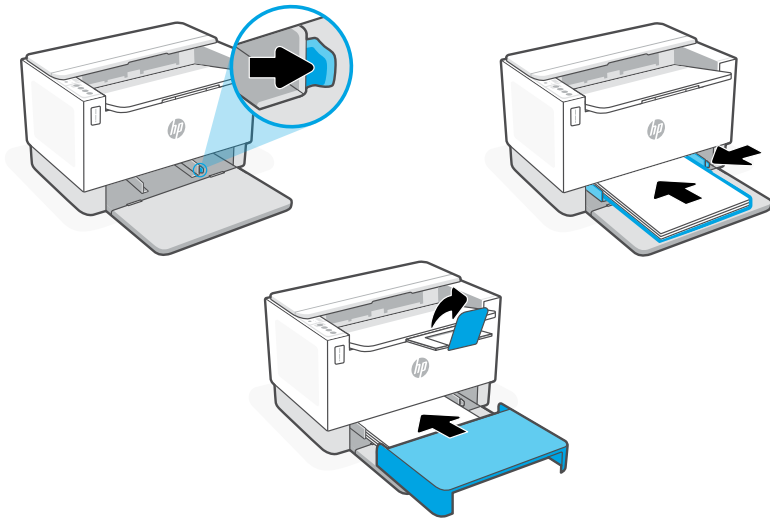
## 1



**ZHCN** 取下所有包装材料和胶带。插入电源线，然后打开打印机。

**EN** Remove all packaging and tape. Plug in and power on the printer.

## 2



**ZHCN** 调整导板，放入纸张，然后将纸盒盖板滑入到位。拉出出纸盒延长板。

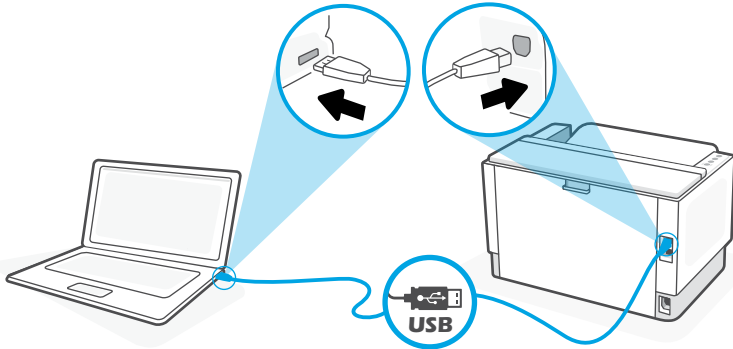
**EN** Adjust guides, load paper and slide the tray cover into place. Open the output tray extender.

## 3



**ZHCN** 从 **123.hp.com** 将**所需的** HP Smart 软件安装在计算机上。

**EN** Install the **required** HP Smart software from **123.hp.com** on a computer.



**ZHCN** 使用 USB 电缆将打印机连接到计算机。

**EN** Connect the printer to a computer using a USB cable.



**ZHCN** \* 有关 USB 连接故障排除和提示的信息，请参阅**参考指南**。

**EN** \* See **Reference Guide** for USB connection troubleshooting and tips.

ZH-CN

获取有关设置的帮助

在线查找设置信息和视频。

EN

Get help with setup

Find setup information and videos online.

[hp.com/support/printer-setup](https://hp.com/support/printer-setup)





---

© Copyright 2022 HP Development Company, L.P.



381V5-90014

ZHCH

EN

越南印刷

Printed in Vietnam