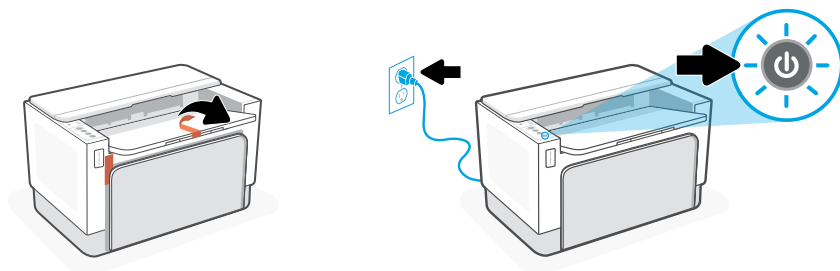




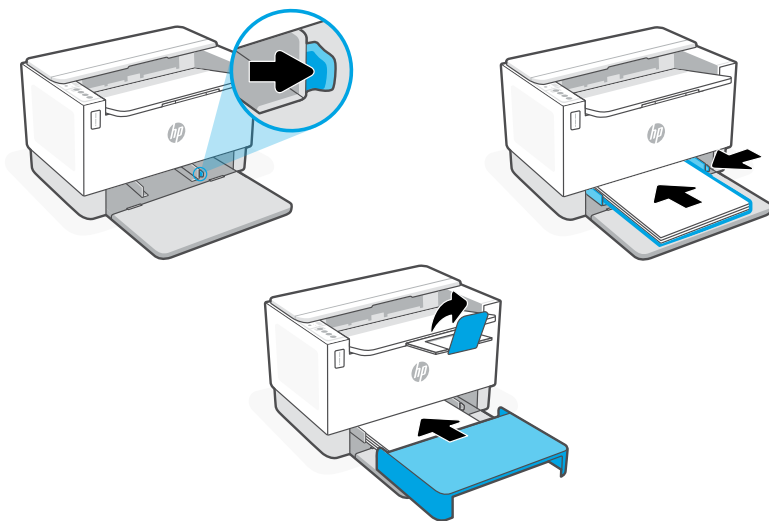
1



ZHCN 取下所有包装材料和胶带。插入电源线，然后打开打印机。

EN Remove all packaging and tape. Plug in and power on the printer.

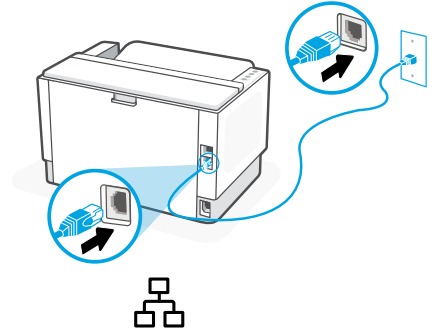
2



ZHCN 调整导板，放入纸张，然后将纸盒盖板滑入到位。拉出出纸盒延长板。

EN Adjust guides, load paper and slide the tray cover into place. Open the output tray extender.

3



ZHCN

对于无线设置，请勿连接以太网电缆。（仅限无线型号）

或者

对于以太网，请连接电缆。

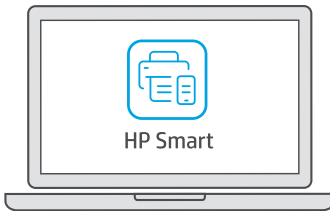
EN

For wireless setup, do not connect an Ethernet cable. (wireless models only)

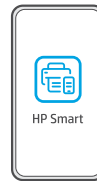
OR

For Ethernet, connect a cable.

4



123.hp.com



ZHCN

从 123.hp.com 或应用商店将**所需的** HP Smart 软件安装到计算机或移动设备上。

EN

Install the **required** HP Smart software from 123.hp.com or your app store on a computer or mobile device.

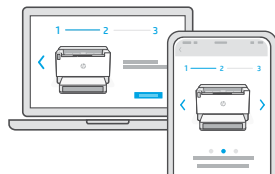
5

ZHCN

遵循 HP Smart 中的指示，将打印机连接到网络并完成设置。



有关 Wi-Fi 故障排除和提示的信息，请参阅参考指南。
如果将打印机连接到 Wi-Fi，则在设置过程中，必须将计算机或移动设备靠近打印机。



EN

Follow instructions in HP Smart to connect the printer to a network and finish setup.



See Reference Guide for Wi-Fi troubleshooting and tips.
If connecting the printer to Wi-Fi, your computer or mobile device must be near the printer during setup.



ZHCN

获取有关设置的帮助

在线查找设置信息和视频。

EN

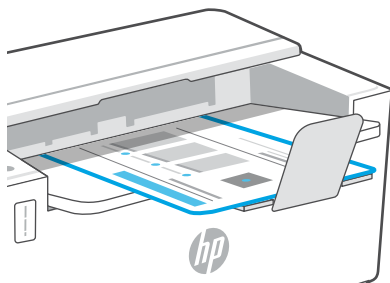
Get help with setup

Find setup information and videos online.

hp.com/support/printer-setup



设置微信打印（可选） | Setup WeChat Printing (Optional)



ZHCN

当完成以上安装步骤并将打印机成功连接至无线网络后，打印机将自动打印出一张带有二维码的信息页。

EN

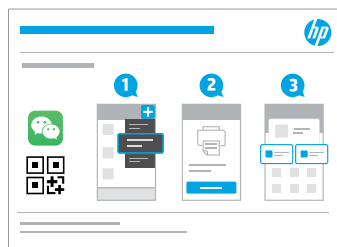
A Welcome Page with a QR code will automatically print after connecting to a wireless network and completing printer setup.

ZHCN

如果您没有获得信息页，请访问此网址或扫描此二维码并根据教程重新打印信息页。

EN

If the Welcome Page does not print, follow instructions from this site to reprint the page. <https://iot.eprintsw.com/www/faq.html>



ZHCN

使用微信扫描信息页上的二维码以启用“惠普云打印”微信小程序，并根据页面提示完成打印机的绑定。

EN

Launch WeChat, and then scan the QR code on the WeChat Welcome Page to launch the mini-app. Follow the on-screen instructions to complete printer pairing.

